



MARCH 2024



A WHOLE NEW ERA OF PICKUP TRUCK SOLUTIONS.

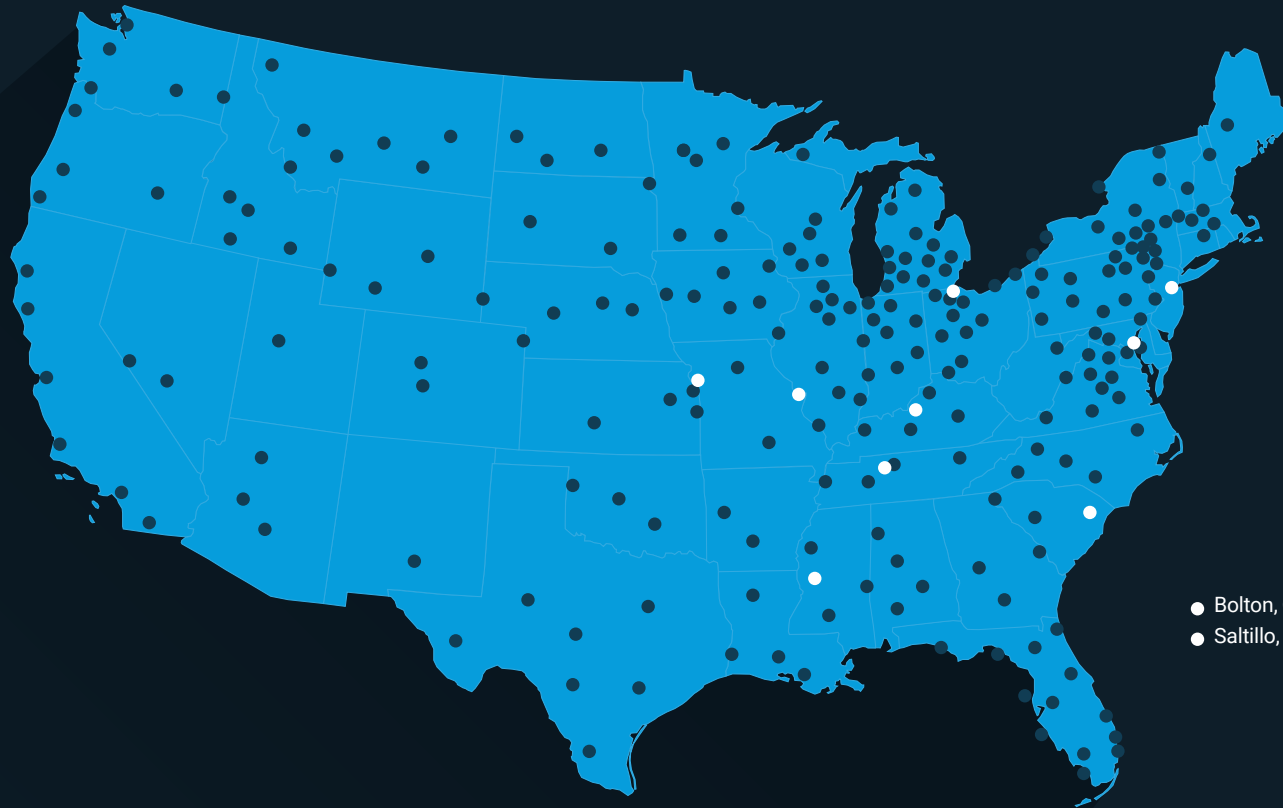
For years, you've known Adrian Steel as a trusted resource for upfitting your cargo vans. As the industry shifts towards pickup trucks, we're leading the charge with our integrated truck solutions while remaining committed to our industry-best lead times that Adrian Steel customers have relied on for years. Serving as a one-stop-shop for simplified ordering, our integrated truck solutions offer you the benefit of lead times that are unmatched, and

A RANGE OF TRUCK PRODUCTS DESIGNED SPECIFICALLY TO WORK TOGETHER AS MUCH AS THEY WORK FOR YOU.

250+ DISTRIBUTORS & 11 SHIP-THRU LOCATIONS NATIONWIDE.

WE SPECIALIZE IN TAILORED UPFITTING SOLUTIONS TO SUIT A DIVERSE RANGE OF BUSINESSES AND VEHICLE PLATFORMS.

Whether you operate a single work vehicle or manage a fleet of thousands, Adrian Steel has the right solution for your business. Our distribution network supports customers in the local market and our fleet team supports customers that need work-ready vehicles delivered across the nation.



- Bolton, ON Canada
- Saltillo, Mexico

COMMERCIAL

OUR PRODUCTS ARE SHIPPED TO OUR NETWORK OF DISTRIBUTORS WHO DESIGN AND INSTALL UPFIT SOLUTIONS FOR CUSTOMERS IN THEIR LOCAL MARKETS.

TO FIND YOUR LOCAL DISTRIBUTOR, GO TO [ADRIANSTEEL.COM/DISTRIBUTORS](https://adriansteel.com/distributors)

FLEET

OUR PRODUCTS ARE DELIVERED TO OUR SHIP-THRU INSTALLATION FACILITIES THAT ARE CONVENIENTLY LOCATED NEAR THE OEM MANUFACTURING PLANTS ACROSS THE COUNTRY.

TO FIND YOUR FLEET ACCOUNT EXECUTIVE, GO TO [ADRIANSTEEL.COM/BUY/FLEETS](https://adriansteel.com/buy/fleets)

A TRUCK CAP THAT TOPS THEM ALL!

WHERE UNMATCHED LEAD TIMES MEET SIMPLIFIED ORDERING.

BENEFITS

30% MORE SQ. FT. OF CARGO ACCESS

(patent pending)

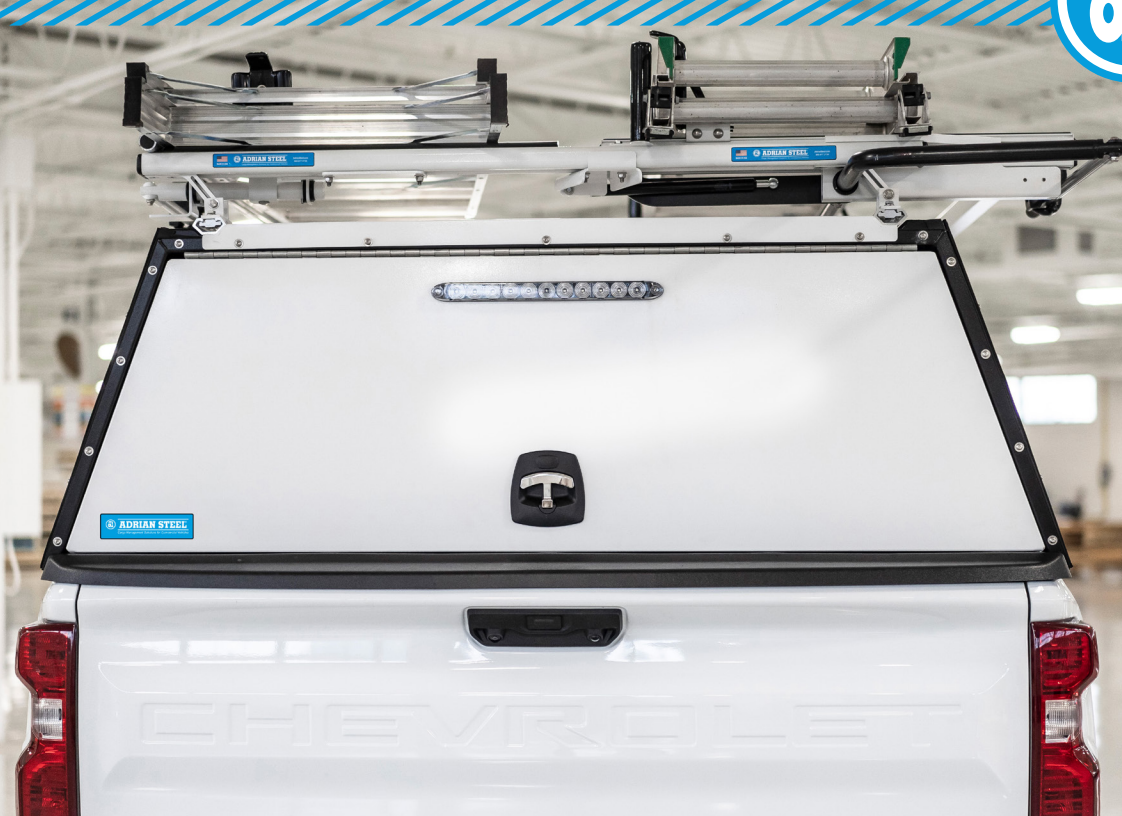
- // Easy access and storage for tools and consumables.
- // Side doors are 30% larger than current toppers.

WEATHER AND DUST RESISTANT

(patent pending)

- // Tight seal helps prevent tools and consumables from being impacted by water and dust.
- // Integrated rain gutters push water away from assembly seams.
- // Pre-installed rubber gaskets prevent runoff from entering the access doors.





COMPRESSION HANDLE >>

- // The only handle on the market designed with a seal that offers better weather and dust protection.

MODULAR DESIGN

- // Customize your topper specifically to your business with our add-on accessories.
- // Minimize the cost of body repairs (only replace panels impacted).
- // Modular parts create flexibility when ordering. Enjoy the ability to add toolboxes and ladder racks at anytime.

LADDER RACK READY

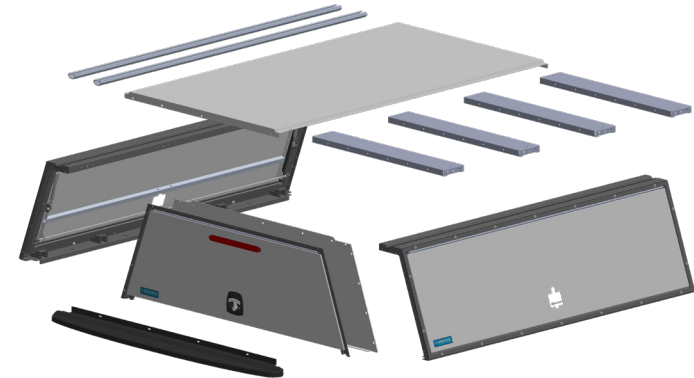
- // No need to order extra parts. This topper comes ready to install Adrian Steel ladder racks.
- // Integrated ladder rail also boosts the topper's strength and rigidity.

AND MORE!

- // Industry-best lead times
- // Superior theft protection
- // Three-year warranty
- // Graphics friendly

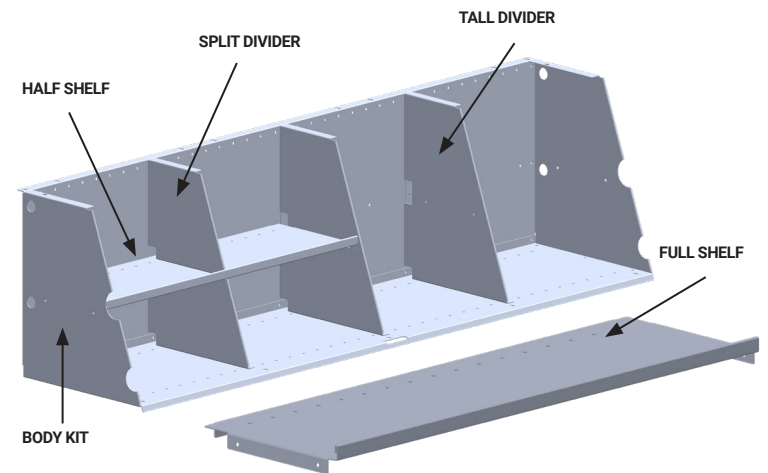
TRUCK CAP KITS

PRODUCT	TRUCK MODEL	PART NUMBER
FULL TRUCK CAP KIT	Ford F-150 - 6.5' Bed	TFDT178HM23W
	Chevrolet Silverado 1500 – 6.5' Bed	TGMT178HM23W
TRUCK CAP PIECE PARTS		
CLOSURE KIT	Both Trucks	TCK78HM23W
HARDWARE KIT	Ford F-150 - 6.5' Bed	TFDT178HM23W
	Chevrolet Silverado 1500 – 6.5' Bed	TGMT178HM23W
SIDE KIT	Both Trucks	TSK78M23W
ROOF KIT	Both Trucks	TRK7823W



TOOLBOX SHELVING & DIVIDER OPTIONS

BODY KIT	TTBBK177520
FULL SHELF KIT	TTBSK1775
HALF SHELF KIT	TTBSK1737
TALL DIVIDER	TTBTDK1720
SPLIT DIVIDER KIT	TTBSDK1720



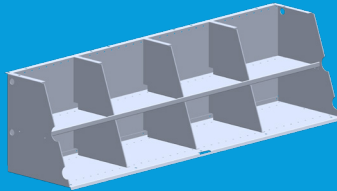
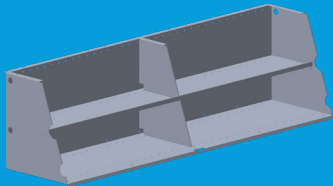
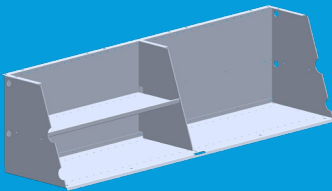


TRUCK CAPS AVAILABLE BY APRIL 1, 2024:

- // Ford F-150 6.5' Bed
- // Chevrolet Silverado 1500 6.5' Bed

COMING IN 2024!

- // Ram 1500/2500/3500 6.3' Bed
- // F-250/F-350 6.75' Bed
- // Silverado 2500/3500 6.75' Bed
- // F-150/F-250/F-350 8' Bed
- // Silverado 1500/2500/3500 8' Bed
- // Ram 1500/2500/3500 8" Bed
- // Colorado 5' Bed
- // Maverick 4.5' Bed
- // F-150 Lightning 5.5' Bed



**CUSTOMIZE YOUR
TOOLBOX TO WHAT
YOU CARRY.**



**CONTACT YOUR NEAREST ADRIAN STEEL DISTRIBUTOR TO
GET YOUR INTEGRATED TRUCK SOLUTION, TODAY.**

ADRIANSTEEL.COM/DISTRIBUTORS

906 James Street
Adrian, Michigan 49221-3996

P: 517-265-6194 F: 517-265-5834
Toll Free 800-677-2726

info@adriansteel.com
adriansteel.com

TRUST // INNOVATION // QUALITY // DELIVERY