

# Safelite Mobile Glass Shop Vans



[AdrianSteel.com](http://AdrianSteel.com)



# Safety Equipment

Safety equipment is in the stowed items box during transportation. Mounting locations are located behind the driver and passenger seats.





# Transit Cab Power Strip

Power strip provides two USB charging ports and three plugs.



# Transit Cab Inverter Location

Inverter is now located in a safer location, behind the driver's seat.



# Dash Inverter Switch

Inverter power is controlled from the factory switch on the Transit.

Keep turned off when not in use



# Element Decal

The Element decal provides a contact number for warranty calls.



[AdrianSteel.com](http://AdrianSteel.com)





# Transit Roof Height Decal

Transit roof height decal location.



[AdrianSteel.com](http://AdrianSteel.com)



# Street Side Door Storage

Updated wiper blade storage solution.





# Curb Side Door Storage

Curb side unit remains the same.



# Burco Glass Rack and Load Line

Burco rack has a lower profile that is consistent across all slots.

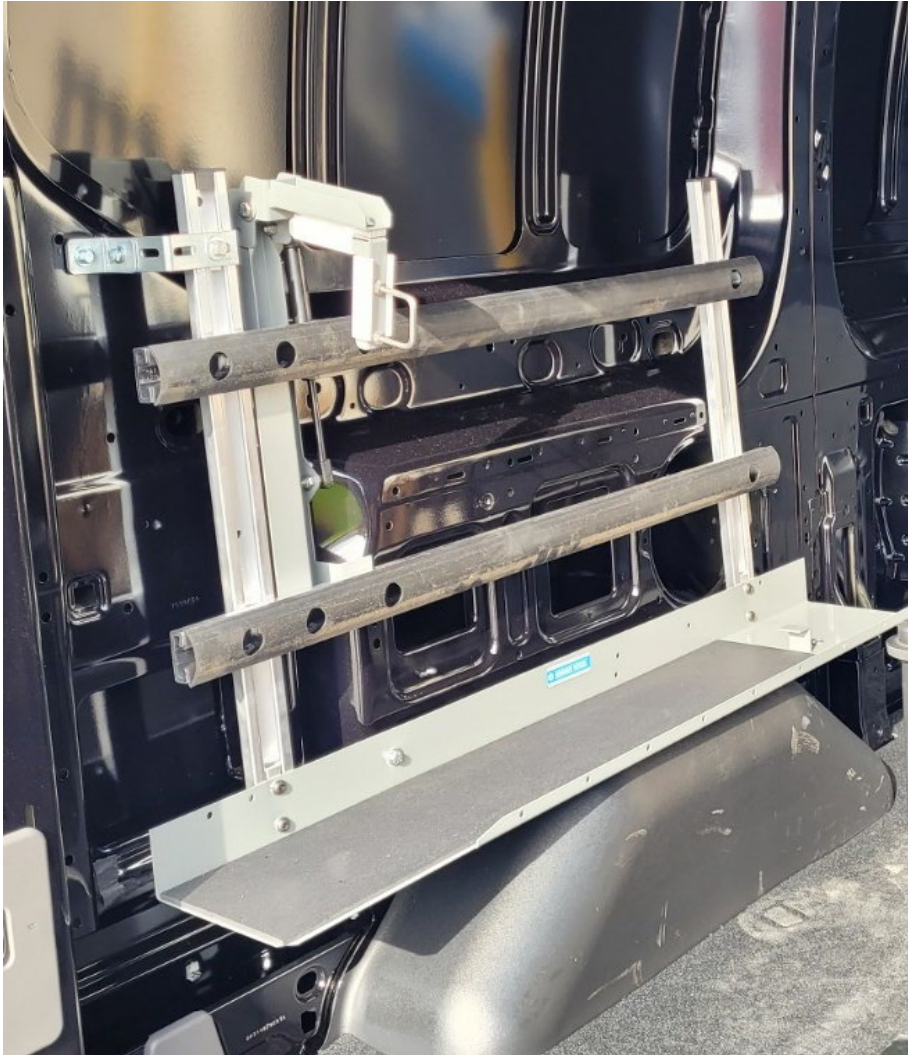
A Burco slide rail has been added to the load line as a health and safety enhancement to assist with loading and unloading glass while reducing strain on the back.





# GTS Holder

GTS holder includes the pull-down locking arm.





# Vacuum and Hose Storage



Hose hook and bungee cord to help store main hose.

Ridgid accessories kit is in the stowed items box.



# Updated Curb Side Shelf

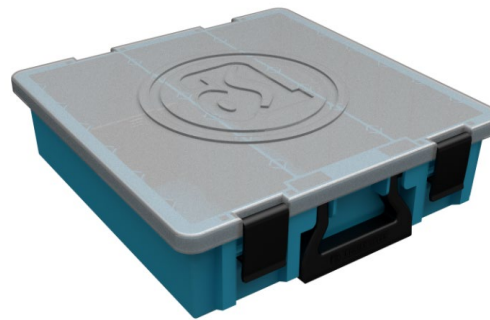
The curb side shelf was updated to now hold the Gold Trim Moldings.

The lower compartment is the storage area for the dual auxiliary batteries. This location keeps everything nice and safe, while providing open space to the left of the shelf.





# Toolbox Replacement



The Belron toolbox has been replaced with built in drawers, a storage unit for longer tools, and a removable storage tote with dividers.



# New Trim Weld Location

Trim Weld is now stored between the shelving unit and the partition.

There is a strap provided to secure rolls in place.



# Cord Reel Bracket



Designed to have the  
cord reel stationary.