



ADRIAN STEEL®

Cargo Management Solutions for Commercial Vehicles

WIRE SPOOL HOLDER, 3-BAR

PRODUCT WEIGHT

8.35 LBS

WIDTH X DEPTH X HEIGHT

9.8" X 10.2" X 11.3"

CAPACITY

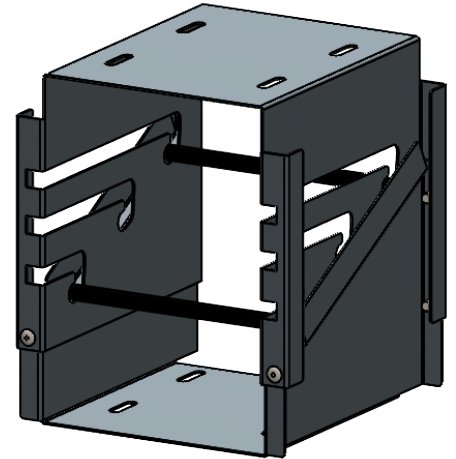
**(2) STANDARD 3.9" SPOOLS PER BAR OR
(1) LARGE SPOOL UP TO 9" DIAMETER**

COLOR

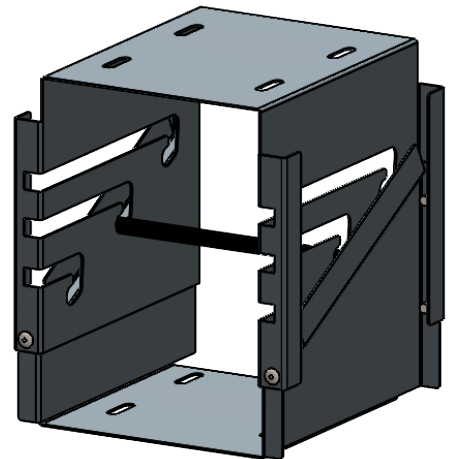
GRAY

CATALOG NUMBER

WRH3



SMALL SPOOLS CONFIGURATION



LARGE SPOOL CONFIGURATION

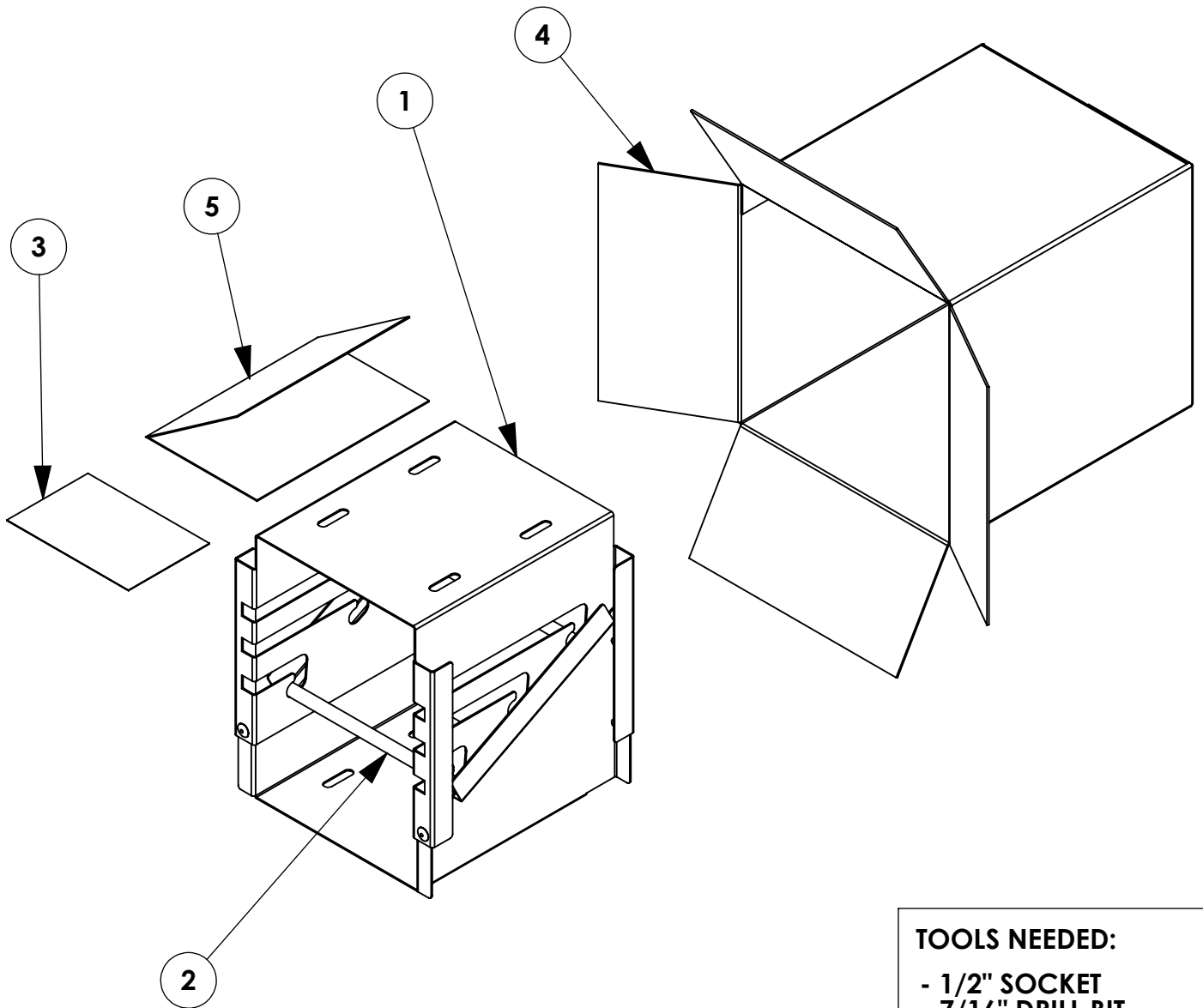
PRODUCT FEATURES

THIS UNIT WILL HOLD UP TO (2) 3.9" WIDE WIRE SPOOLS PER BAR ON THE SMALL SPOOL CONFIGURATION, AND (1) LARGE WIRE SPOOL UP TO 9" DIAMETER FOR LARGE SPOOL CONFIGURATION. STANDARD KIT INCLUDES HARDWARE TO MOUNT TO EXTENDED AND (2) BARS. IT CAN ALSO MOUNT TO ANY FLAT SURFACE, OR STACK ON TOP OF EACH OTHER, BUT REQUIRES SEPARATE HARDWARE.

INSTR. NUMBER : 71986	PG: 1	REV: A
PART NUMBER : WRH3		
PART DESC. : WIRE HOLDER ASSM		

ITEM NO.	PART NUMBER	DESCRIPTION	QTY.
1	72292	WRH3 ASSEMBLY	1
2	71982	BAR-SPOOL HOLDER	2
3	BAGWRH3	BAG FOR WRH3	1
4	CRTWRH3	WRH3 10.25X10.25X11.50	1
5	71986	ASSM INSTRUC, WRH3	1

NOTE: THIS INSTRUCTION IS VALID FOR THE FOLLOWING KITS:
- WRH3



- TOOLS NEEDED:**
- 1/2" SOCKET
 - 7/16" DRILL BIT
 - 5/16"-18 INSTALL BIT

GET TO KNOW THE VEHICLE - AT THE BEGINNING OF ANY INSTALLATION, CHECK THE LOCATION OF THE FUEL TANK, FUEL LINES, BRAKE LINES, HIGH VOLTAGE BATTERIES AND WIRING HARNESSSES TO AVOID INJURY OR PROPERTY DAMAGE FROM TOOL CONTACT.

SEAL ALL EXTERIOR HOLES - ALL INSTALLATION HOLES SHOULD BE SEALED WITH BUTYL TAPE OR SILICON TO PREVENT WATER AND EXHAUST GASES FROM ENTERING THE VEHICLE.

CONTROL DRILL DEPTH - TO AVOID DAMAGE TO THE VEHICLE, USE A DRILL STOP OR CLEARED STEP BIT WHEN DRILLING INSTALLATION HOLES.

ALWAYS ADD PRIMER - WHEN ADDING INSTALLATION HOLES BE SURE TO USE A SELF-ETCHING PRIMER TO PREVENT CORROSION, FASTENER FAILURE AND INJURY.

MOUNTING POINTS MUST HAVE METAL-TO-METAL CONTACT - USE PROVIDED MOUNTING SPACERS TO ACCOMMODATE FOR VEHICLE FEATURES, CARPET OR SUBFLOORS.

PROVIDE CLEARANCE FOR SPACERS - IF THE INSTALLATION VEHICLE CONTAINS A CARPET OR SUBFLOOR, USE A 1-3/16" DIAMETER CARPET CUTTER (P/N: 31183-0) AT ALL MOUNTING LOCATIONS TO OPEN UP ROOM FOR SPACERS.

CHECK SPACER ORIENTATION - BE SURE THAT THE INDENT IN THE SPACER COVERS THE PLUSNUT HEAD; THIS ENSURES THE MOST METAL-TO-METAL CONTACT AND REDUCES VIBRATION.

PLUSNUT INSTALLATION - A PLUSNUT GUN IS RECOMMENDED FOR PLUSNUT INSTALLATION FOR ITS PRODUCTION SPEED. HOWEVER, A PLUSNUT SETTING TOOL CAN ALSO BE USED (P/N: 22200-0).

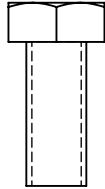
THRU-BOLT CLEARANCE - WHEN USING A THRU-BOLT AT ANY MOUNTING LOCATION, BE SURE THAT YOUR HOLE HAS 1/16" CLEARANCE.

FASTENERS USED

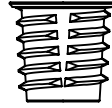
BAG REFERENCE: BAGWRH3



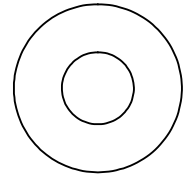
FAS0098
WASHER,
SPLIT, 5/16 ZP
QTY: 04



FAS0081
SCREW, HH
5/16-18X.75 ZP
QTY: 04



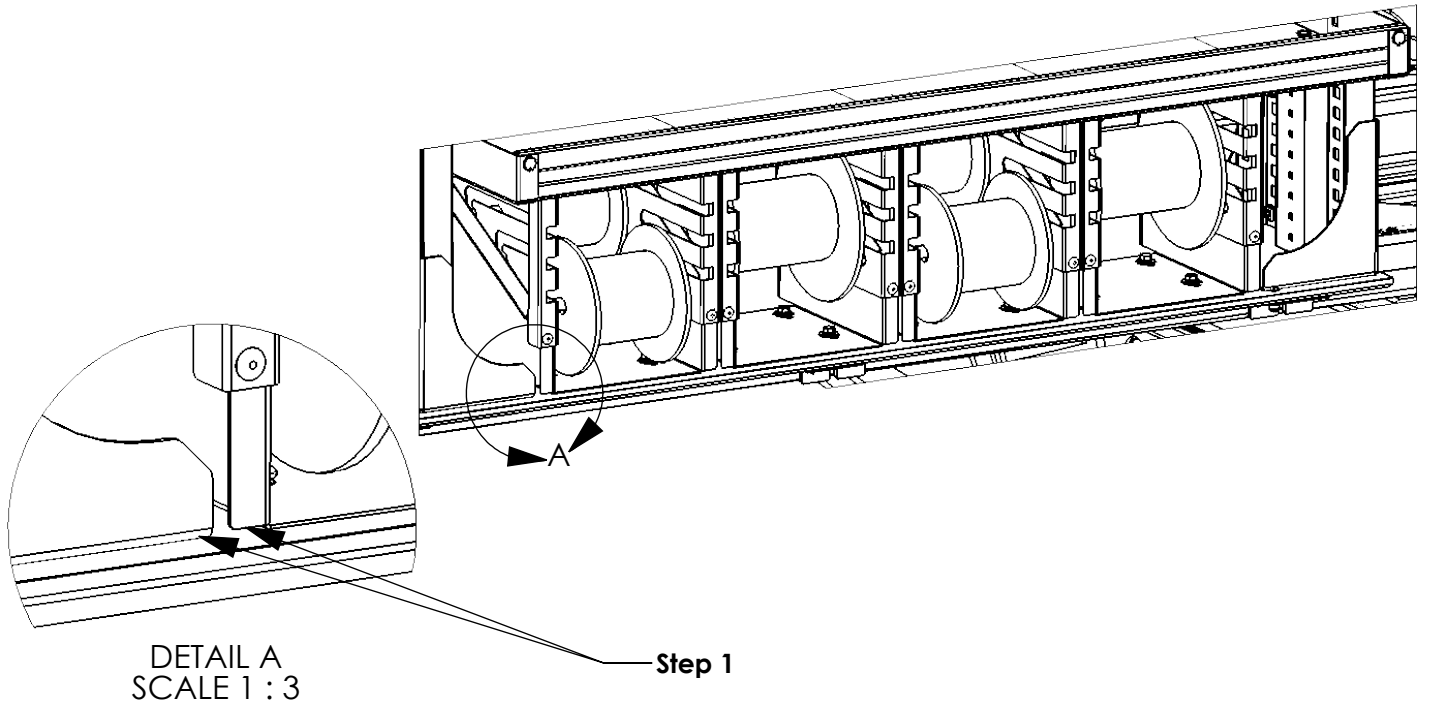
FAS0921
TAPPING INSERT,
5/16-18X33/64,
ZINC ALLOY
QTY: 04



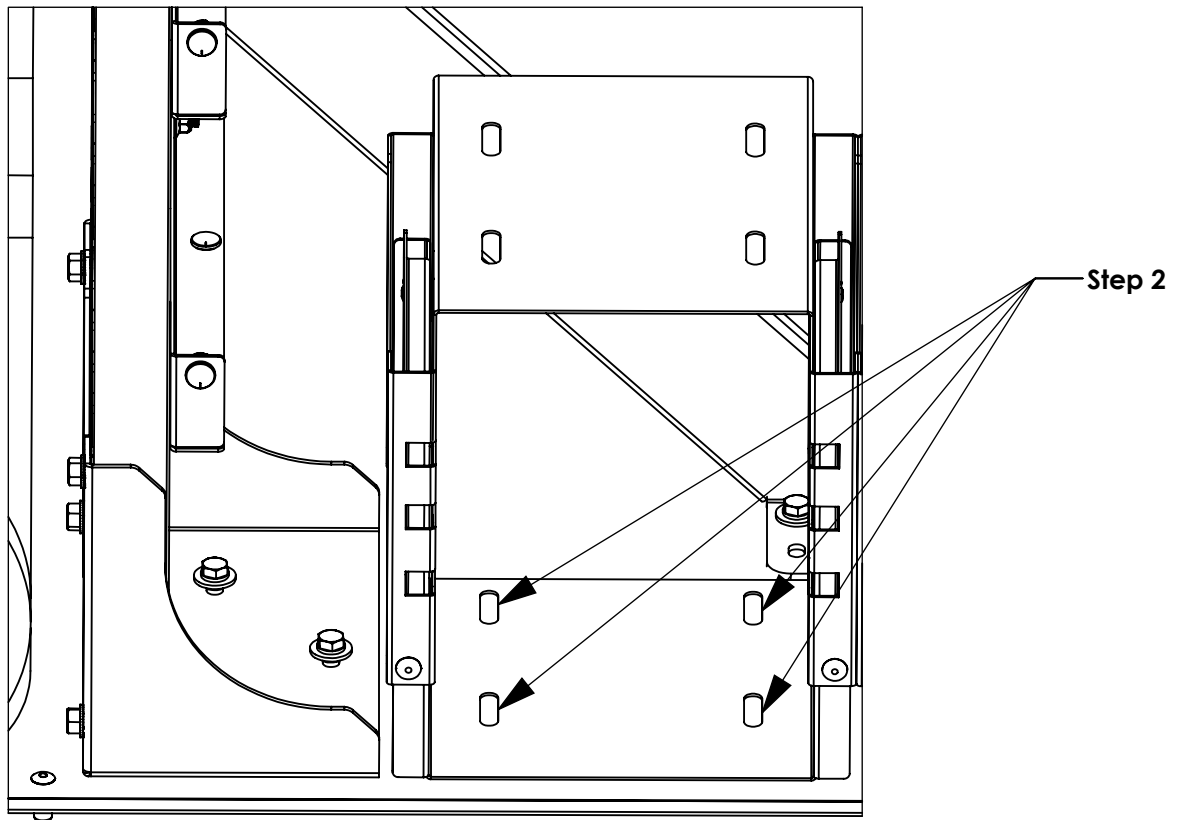
FAS0086
WASHER, FLAT
USS 5/16 ZP
QTY: 04

INTENTIONALLY LEFT BLANK

STEP 1 - PLACE WIRE SPOOL HOLDER(S), UP TO (4) IN A ROW, UNDER SHELVING UNIT. ALIGN WIRE SPOOL HOLDER LOWER FRONT FACE EVEN WITH SHELVING FOOTER.



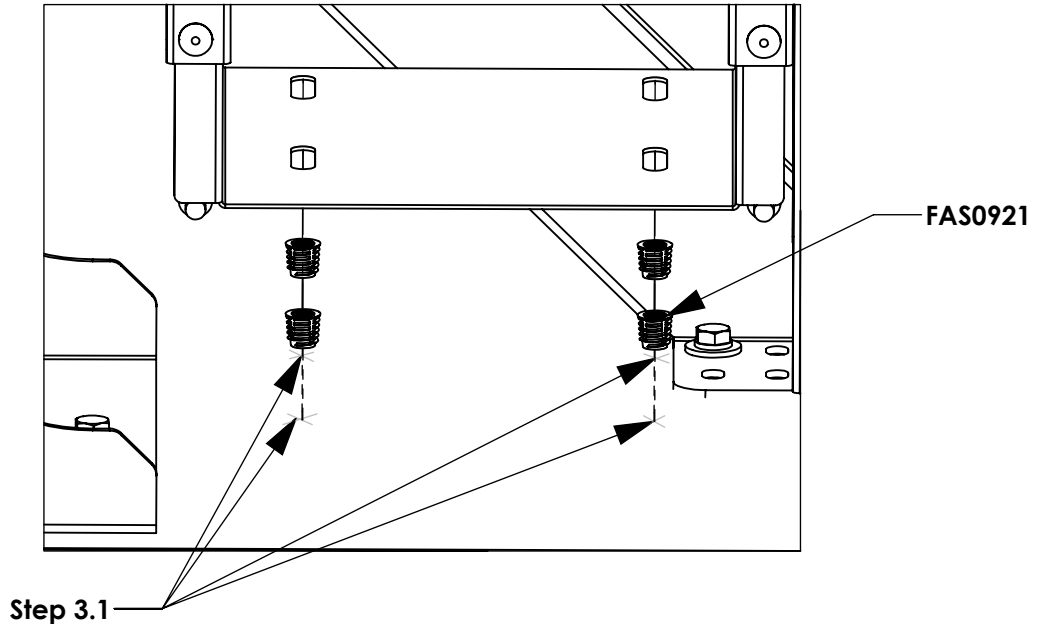
STEP 2 - MARK EXTENDED IN CENTER OF MOUNTING SLOTS TO LATER INSTALL FAS0921 TAPPING INSERT.



**STEP 3 - PRE-DRILL HOLES IN EXTENDEBED USING A 7/16" DRILL BIT.
INSTALL FAS0921 TAPPING INSERTS.**

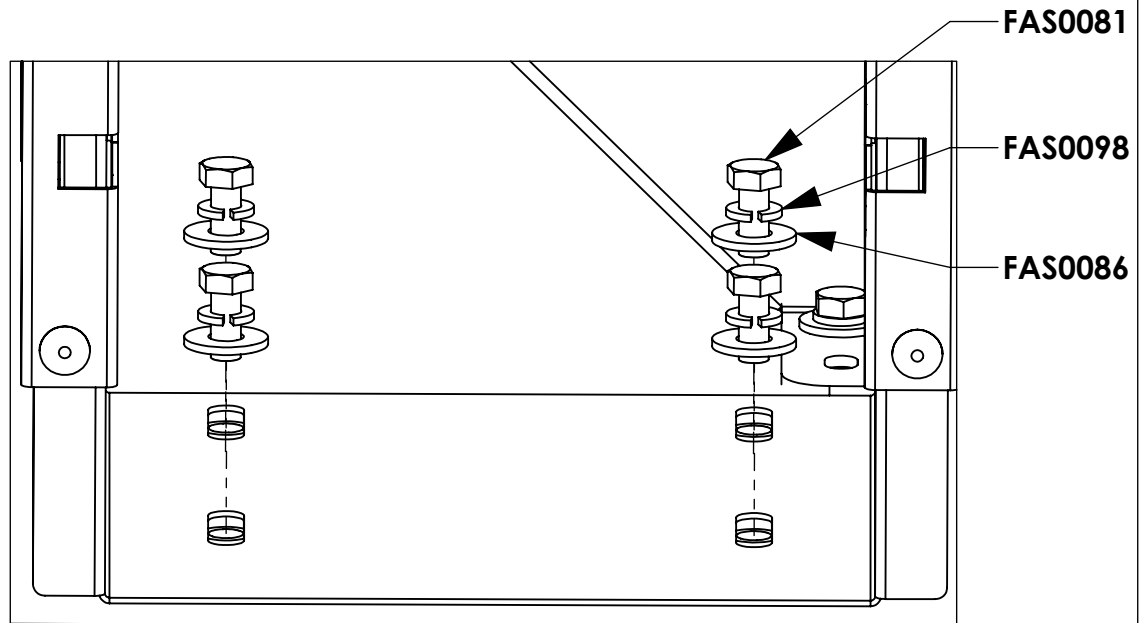
Step 3.1
PRE-DRILL
(04 PLACES PER
HOLDER)
7/16 DRILL BIT

Step 3.2
FULLY TIGHTEN
FAS0921
(04 PLACES PER
HOLDER)
5/16-18 INSTALL
BIT

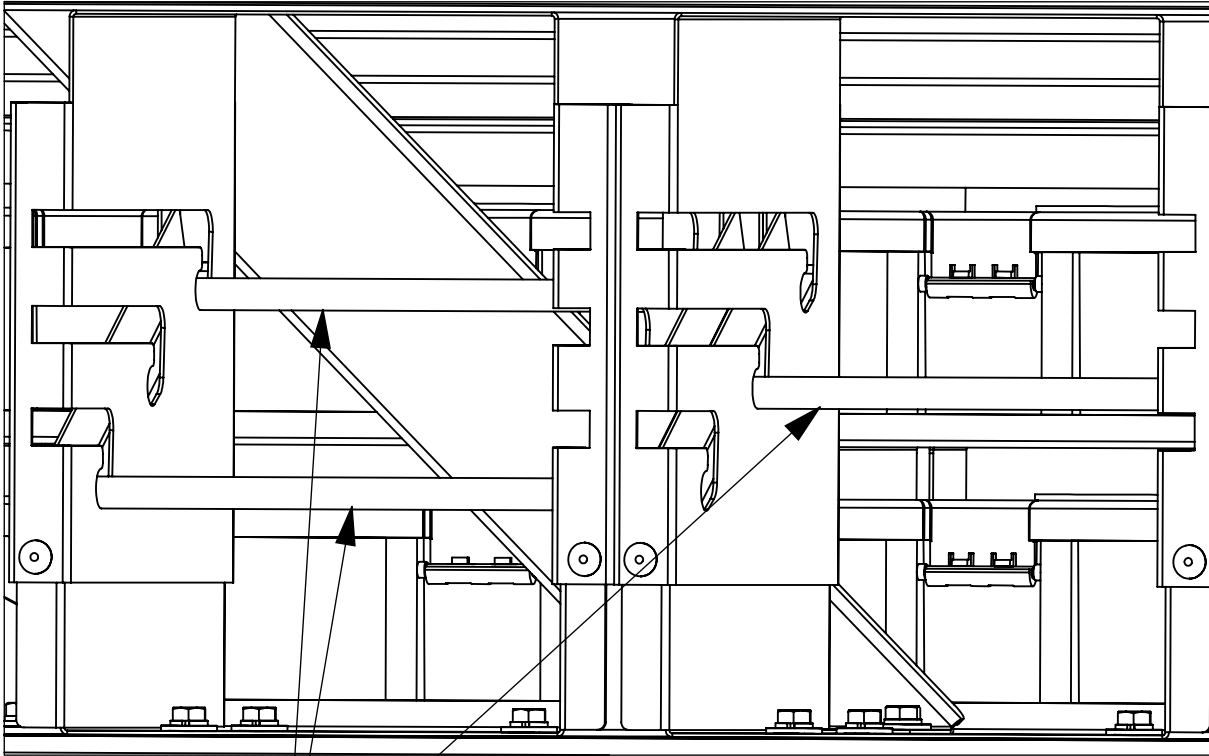


STEP 4 - PLACE FAS0098 SPLIT WASHER, FOLLOWED BY FAS0086 FLAT WASHER ON FAS0081 SCREW. INSERT INTO FAS0921 TAPPING INSERT AND FULLY TIGHTEN.

Step 4
FULLY TIGHTEN
FAS0086
FAS0098 AND
FAS0081
(04 PLACES PER
HOLDER)
1/2 SOCKET



STEP 5 - FEED 71982 BAR-SPOOL HOLDER IN TOP AND BOTTOM SLOTS FOR SMALL WIRE SPOOLS. CENTER SLOT FOR LARGE WIRE SPOOL.



71982