

**ADRIAN STEEL®**

Cargo Management Solutions for Commercial Vehicles

SPOOL HOLDER, GRAY

PRODUCT WEIGHT

13 LBS

WIDTH X DEPTH X HEIGHT

9.5" X 5.0" X 4.0"

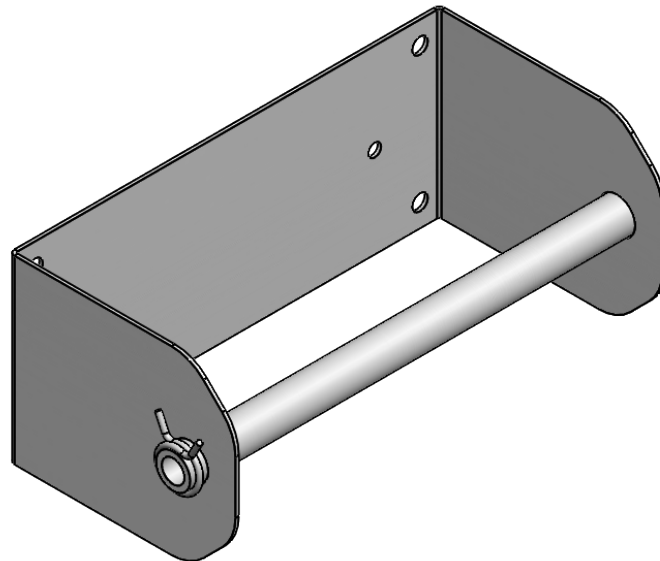
CAPACITY

6" DIA Spool

COLOR

GRAY

CATALOG NUMBER

WRH1

PRODUCT FEATURES

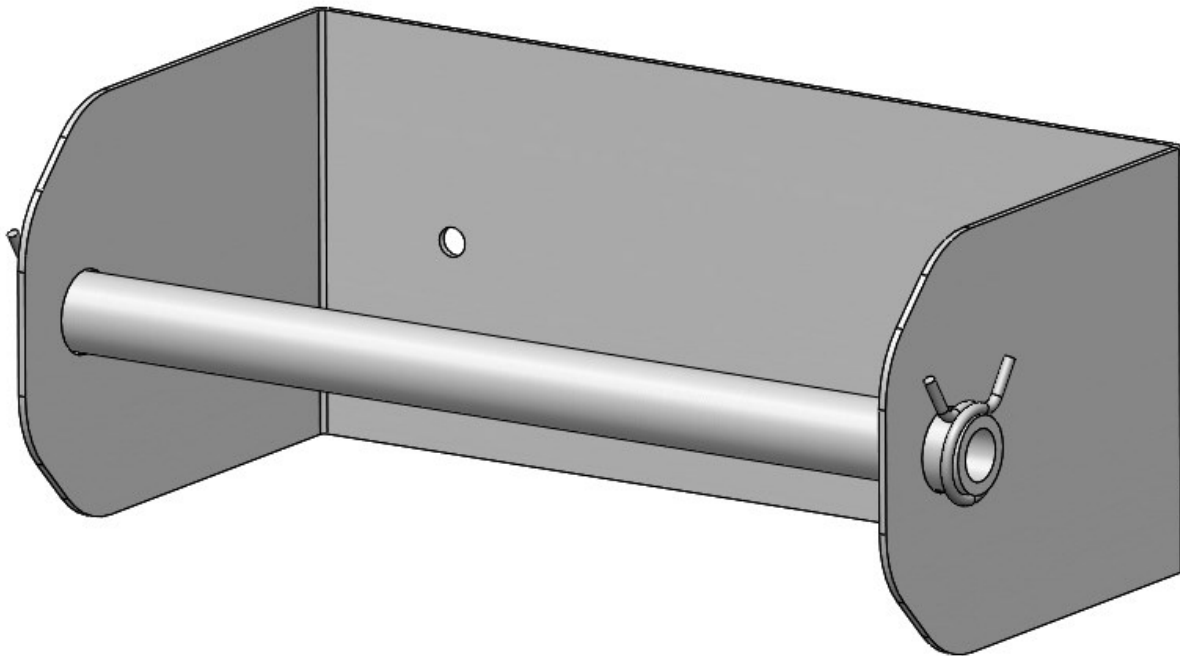
This holder keeps 1 spool ranging from 6 inches to 2 inches in diameter, keeping them secured in any vehicle. Whether for work or travel, it ensures easy access without clutter or tangles. Securely mounts to standard van shelving and next generation shelving end panels, ensuring smooth rotation and tangle-free dispensing. Built with durable materials, it withstands the rigors of mobile workspaces, making it perfect for electricians, contractors, and makers on the move.

Introduction / Comments:

This wire reel holder kit is designed specifically to attach to the rear KD unit.

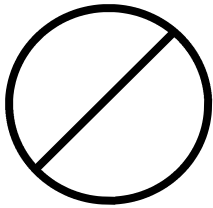
Note:

It is advised that all fasteners used in this assembly and installation of this Rack should be checked for tightness at the following intervals: @ 2-weeks and again @ 6-weeks of operation. This preventive maintenance step must be completed to ensure your package gives you long service life.



WHR1 WIRE REEL HOLDER

- PRECAUTIONS -



CAUTION



**THE USE OF AIR IMPACT TOOLS CAN
OVER-TORQUE FASTENERS AND
CAUSE FASTENER FAILURE!**



CAUTION



**ALL INSTALLATION HOLES SHOULD BE SEALED
WITH SILICON OR BUTYL SEALANT TO PREVENT
EXHAUST FUMES FROM ENTERING THE VEHICLE!**



DANGER



**INSPECT FOR FUEL TANK, FUEL LINES, BRAKE LINES, HIGH
VOLTAGE BATTERIES AND ELECTRICAL LINES PRIOR TO
DRILLING TO AVOID DAMAGING CRITICAL VEHICLE SYSTEMS
OR INJURY TO INSTALLER DURING INSTALLATION PROCESS!**



CAUTION



**TO AVOID DAMAGING THE VEHICLE ALWAYS
USE DRILL STOPS WHEN DRILLING ANY IN-
STALLATION HOLES!**



- IMPORTANT WARRANTY REQUIREMENTS -

1. SUBSTITUTING ADRIAN STEEL SPECIFIED FASTENERS FOR ASSEMBLY AND/OR INSTALLATION WILL VOID YOUR PRODUCT WARRANTY.
2. ALL HOLES DRILLED INTO VEHICLE SHOULD HAVE THE RAW METAL EDGES SEALED WITH A SELF-ETCHING PRIMER TO RESIST CORROSION AND POTENTIAL FASTENER POINT FAILURE.
3. ALL FASTENERS USED IN THE INSTALLATION OF THIS PRODUCT SHOULD BE TIGHTENED TO THE TORQUE(S) SPECIFIED IN THESE INSTRUCTIONS.
4. THESE INSTRUCTIONS SHOULD BE KEPT WITH THE VEHICLE.

THE BASIC TOOLS NEEDED FOR MOST INSTALLATIONS



DRILL

DRILL BIT WITH
STOP

RATCHET, SOCKETS
AND/OR WRENCHES

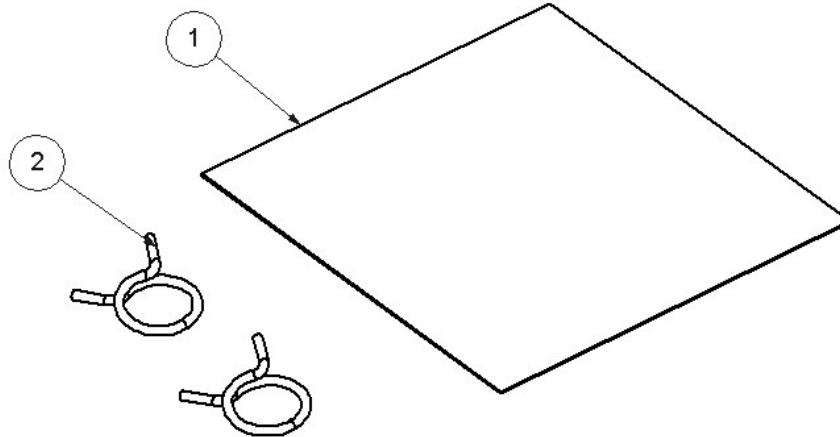
SCREWDRIVERS

MEASURING TAPE

ADDITIONAL TOOLS MAY BE NEEDED FOR THIS INSTALLATION AND THEY WILL BE IDENTIFIED IN THE STEPS THAT FOLLOW.

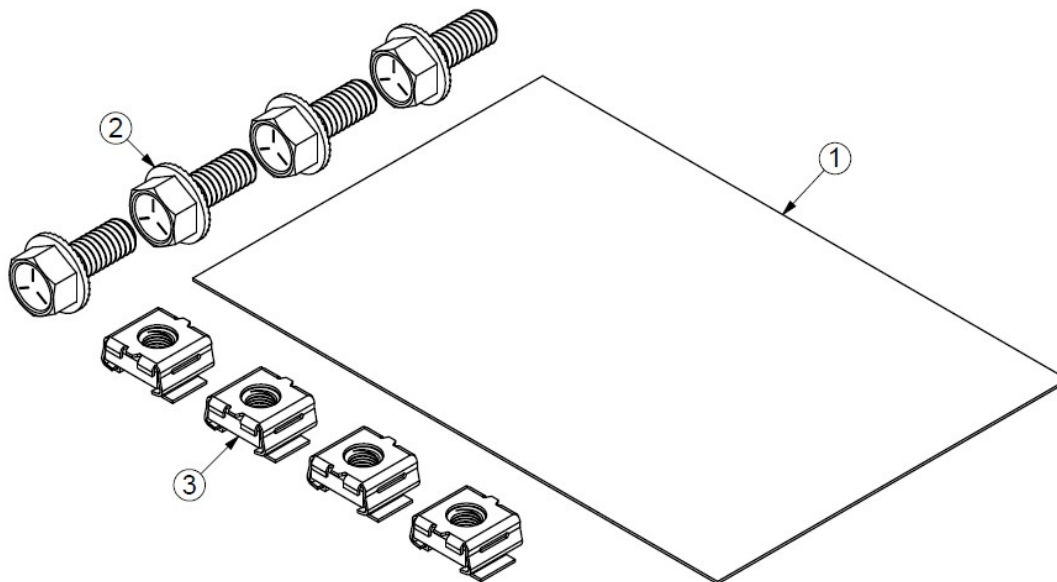
BAGWRH1 - FASTENER BAG, WHR1

ITEM NO.	PART NUMBER	DESCRIPTION	QTY.
1	BAG0505-A	5" x 5" 3MIL AUTOBAG	1
2	52792	3/4" SW HOSE CLAMP	2

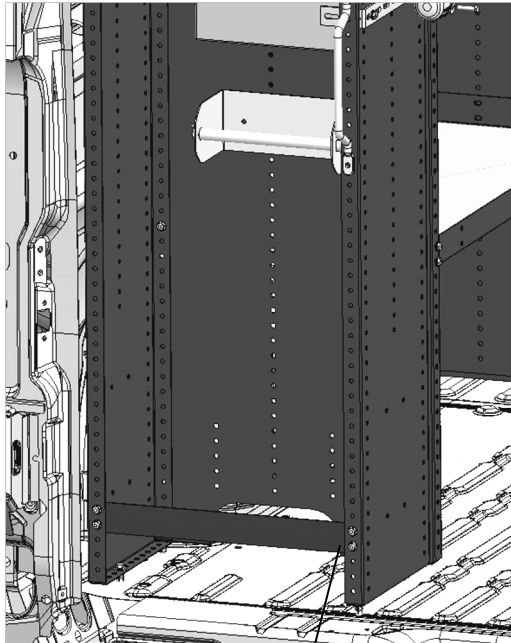


BAGPEPACCMNT4 - BAG END PANEL MOUNTING, 4

ITEM NO.	PART NUMBER	DESCRIPTION	QTY.
1	BAG0406-A	4" x 6" 3MIL AUTOBAG	1
2	FAS0438	SCREW,HFLNG 5/16-18X.75 ZP	4
3	FAS0915	5/16-18 SNAP-IN NUT	4

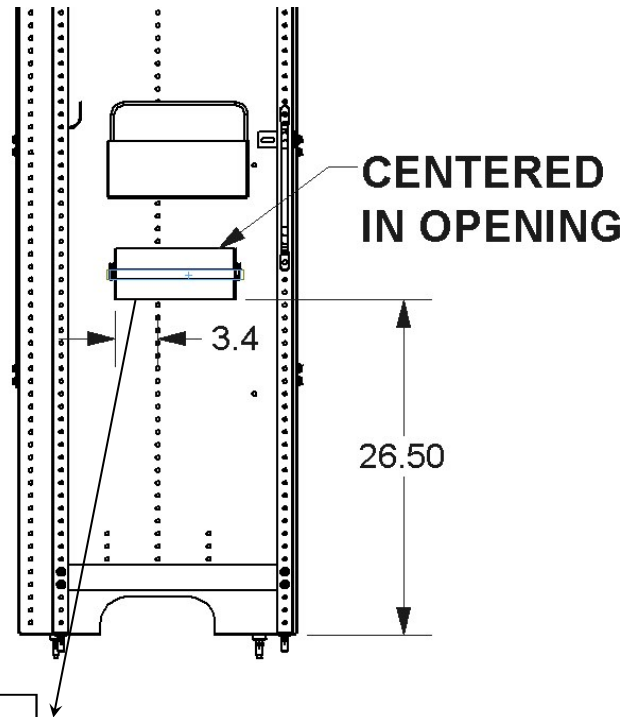


STEP #1 : LOCATE WIRE REEL HOLDER, TRANSFER HOLES



STREETSIDE REAR
SHELVING UNIT

LOCATE WRH1-R
TRANSFER AND DRILL
HOLES IN THE END PANEL



**CENTERED
IN OPENING**

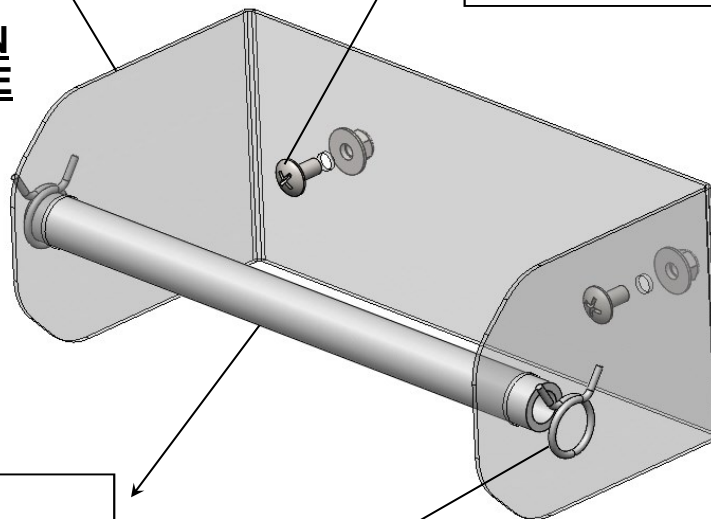
BOLT THRU THE
SHELVING UNIT
FAS0061—TRUSS HD (2)
FAS0055—NYLOCK (2)

52790-G—SPOOL HOLDER

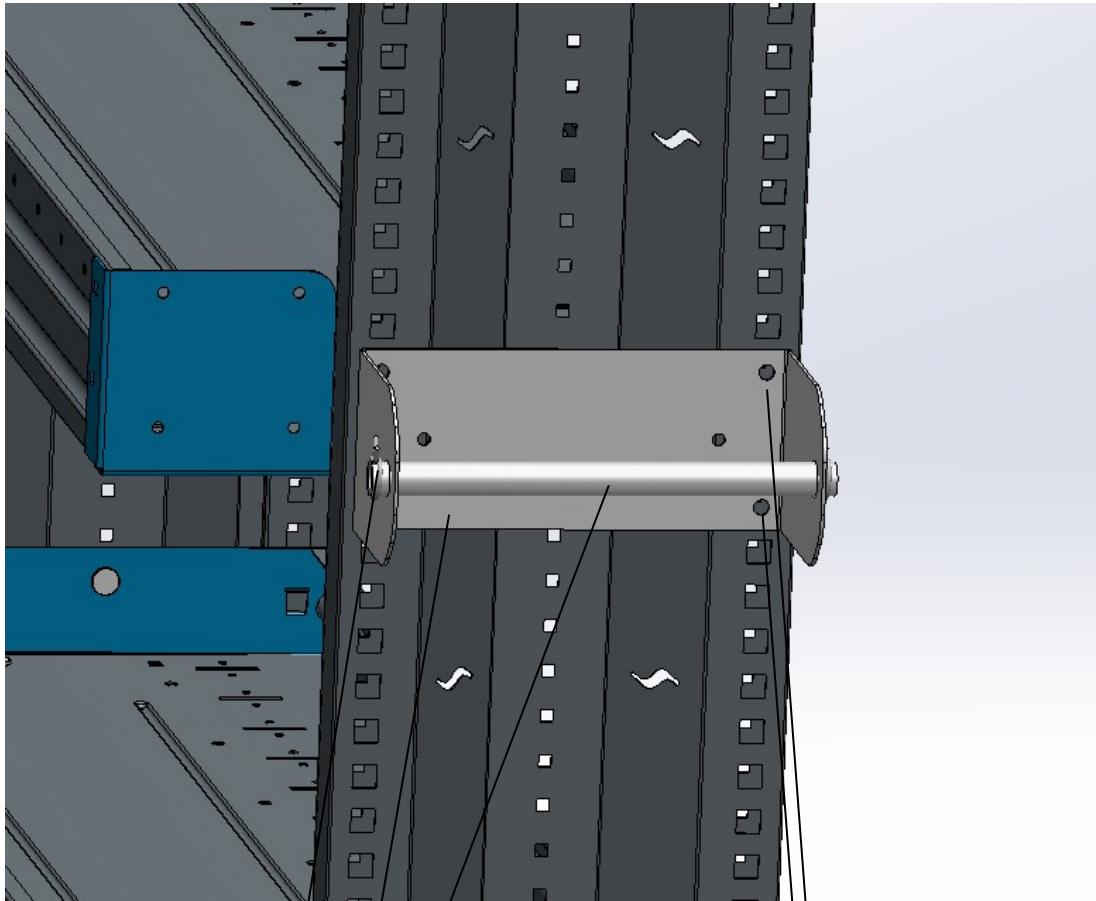
**FOR INSTALLATION ON
NEW END PANELS, SEE
NEXT PAGE!**

TUB52791—TUBE

52792—HOSE CLAMPS (2)



STEP #1 : LOCATE WIRE REEL HOLDER, EP MOUNTING HOLES



52792—HOSE CLAMPS (2)

52790-G—SPOOL HOLDER

TUB52791—TUBE

SELECT LOCATION ON EP
BY INSERTING FAS0915
(QTY: 4) INTO DESIRED
HOLE LOCATIONS ALIGN-
ING WITH FOUR CORNER
HOLES ON WRH1

ONCE FAS0915 (QTY: 4)
ARE IN PLACE, RE-ALIGN
WRH1 AND FASTEN USING
FAS0438 (QTY: 4)

FULLY TIGHTEN FAS0438 (QTY: 4)

INSTALLATION IS COMPLETE!