

NISSAN WKC1LCVH WING KIT

PRODUCT WEIGHT

27 LBS

WIDTH x DEPTH x HEIGHT

67.5" x 5" x 75.5"

CAPACITY

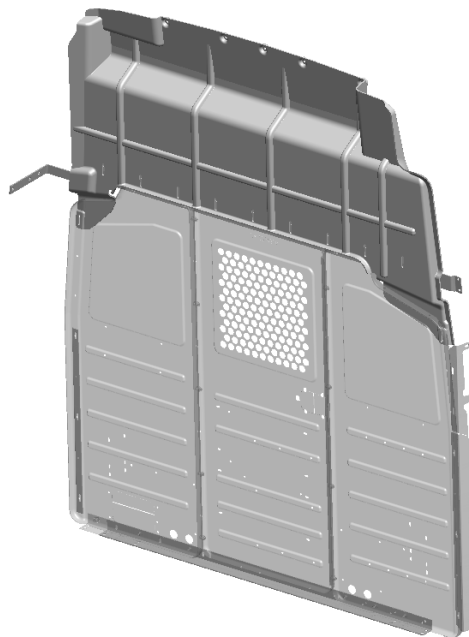
N/A

COLOR

GRAY

CATALOG NUMBER

WKC1LCVH

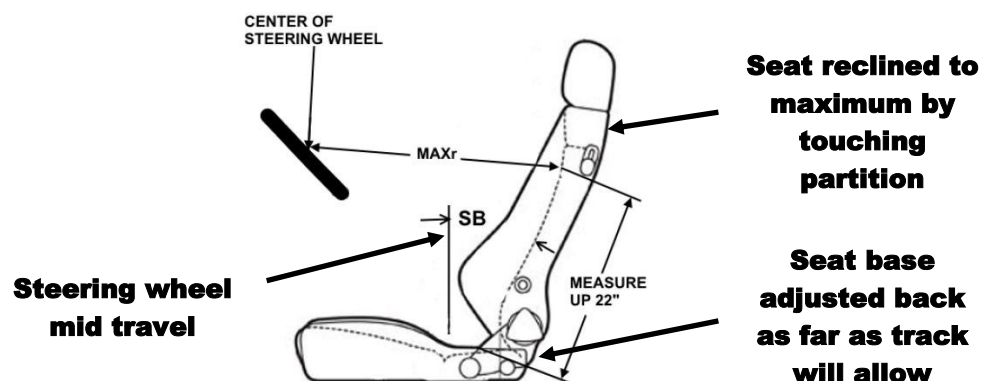


Partition panels shown for illustrations purposes only. Panels are sold separately.

PRODUCT FEATURES

Steel partition wing kit (using appropriate panel kit) for Nissan FSV high roof provides a solution for separating the cab area from the cargo area. The steel partition features the use of OEM attachment points for a clean installation.

Driver Comfort Details



	DESCRIPTION	DIMENSION
SB	SEAT BACK ANGLE	27 degrees
MAXr	MAXIMUM DRIVER REACH	29-1/2"

SEE PAGE 2 FOR APPLICATION NOTES AND ACCESSORIES, OTHER PRODUCTS THAT WORK WITH THIS UNIT.

Accessory Chart

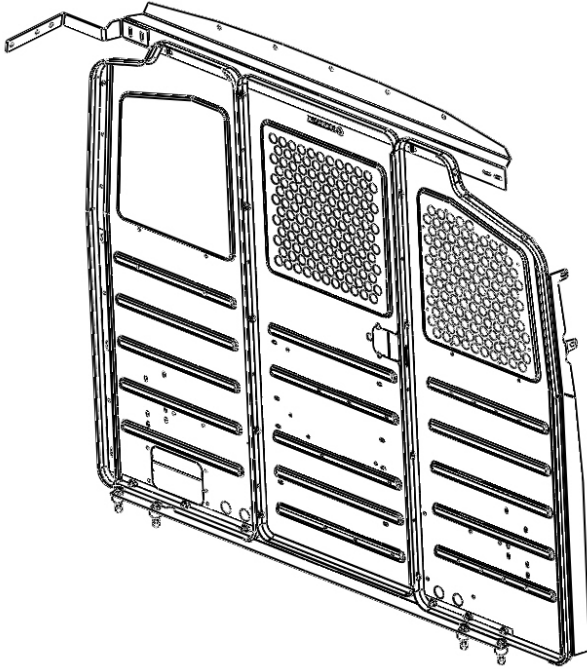
	Cargo Side	Cab Side
	Base Partition BAGRKA1 REQUIRED (1 BAGRKA1 will allow for one accessory to be added)	None available
Available Accessories	-	-
PA7: Reflector kit	x	-
PA8: Fire ext.	x	-
PA9: First aid tray	x	-
PA10: Practice holder	-	-
PA11: Cab file	-	-
PA11NL: Catalog box	-	-
TA1: Four hook bar	-	-
TH30: 30lb tank holder	-	-
TH50: 50lb tank holder	-	-
UH50RM1: Rail mount kit	-	-
UH10: 1" hook	-	-
UH25: 2.5" hook	-	-
UH25CP-G: 2.5' hook comp	-	-
UH50: 5" hook	x	-



ADRIAN STEEL®

Cargo Management Solutions for Commercial Vehicles

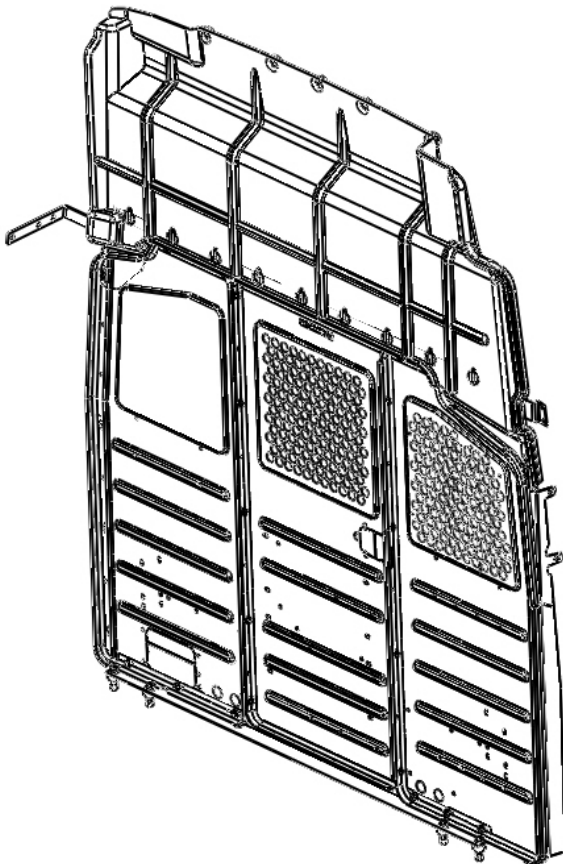
Partition Panel & Wing Kit Assembly/Installation



**SMC Fixed and Hinged
Center Panel Partitions**

**SMC SERIES
FOR
NISSAN LR and HR**

FOR DIRECTION ON ASSEMBLY
OF THE HINGED DOOR OPTION
REFER TO THE "PDK1" ASSEMBLY
INSTRUCTIONS (ref: **36545-0**)
FOR SPECIFIC STEPS



- PRECAUTIONS -





 **CAUTION** 
**THE USE AIR IMPACT TOOLS CAN
OVER-TORQUE FASTENERS AND
CAUSE FASTENER FAILURE!**



 **CAUTION** 
**ALL INSTALLATION HOLES SHOULD BE SEALED
WITH SILICON OR BUTYL SEALANT TO PREVENT
EXHAUST FUMES FROM ENTERING THE VEHICLE!**



 **DANGER** 
**INSPECT FOR FUEL TANK, FUEL LINES, BRAKE LINES, HIGH
VOLTAGE BATTERIES AND ELECTRICAL LINES PRIOR TO
DRILLING TO AVOID DAMAGING CRITICAL VEHICLE SYSTEMS
OR INJURY TO INSTALLER DURING INSTALLATION PROCESS!**



 **CAUTION** 
**TO AVOID DAMAGING THE VEHICLE ALWAYS
USE DRILL STOPS WHEN DRILLING ANY IN-
STALLATION HOLES!**



- IMPORTANT WARRANTY REQUIREMENTS -

1. SUBSTITUTING ADRIAN STEEL SPECIFIED FASTENERS FOR ASSEMBLY AND/OR INSTALLATION WILL VOID YOUR PRODUCT WARRANTY.
2. ALL HOLES DRILLED INTO VEHICLE SHOULD HAVE THE RAW METAL EDGES SEALED WITH A SELF-ETCHING PRIMER TO RESIST CORROSION AND POTENTIAL FASTENER POINT FAILURE.
3. ALL FASTENERS USED IN THE INSTALLATION OF THIS PRODUCT SHOULD BE TIGHTENED TO THE TORQUE(S) SPECIFIED IN THESE INSTRUCTIONS.
4. THESE INSTRUCTIONS SHOULD BE KEPT WITH THE VEHICLE.

THE BASIC TOOLS NEEDED FOR MOST INSTALLATIONS



DRILL



DRILL BIT WITH
STOP



RATCHET, SOCKETS
AND/OR WRENCHES



SCREWDRIVERS



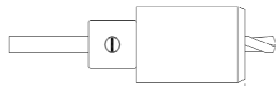


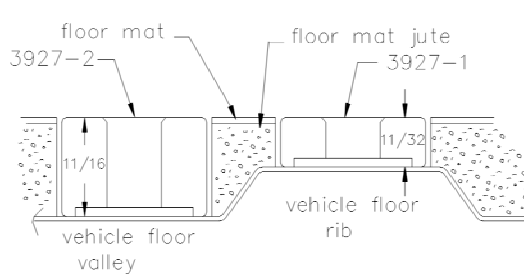
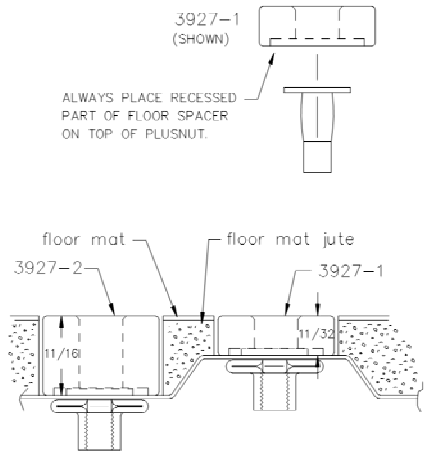
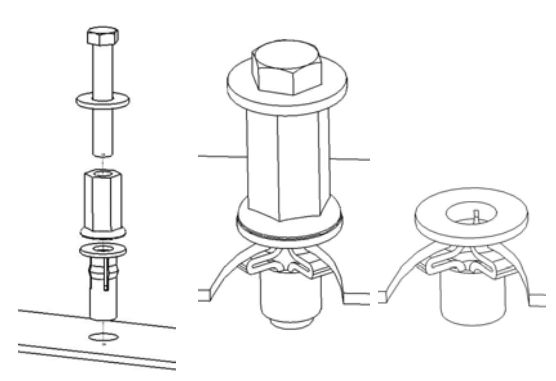
MEASURING TAPE

ADDITIONAL TOOLS MAY BE NEEDED FOR THIS INSTALLATION AND THEY WILL BE IDENTIFIED IN THE STEPS THAT FOLLOW.



WHEN INSTALLING PLUSNUTS MAKE SURE YOU USE THE CORRECT DRILL BIT WITH A STOP!

PLUSNUT SIZE	DRILL BIT SIZE
1/4-20 PLUSNUT, FAS0052	USE A 3/8" DIAMETER DRILL BIT WITH A STOP.
5/16-18 PLUSNUT, FAS0091	USE A 1/2" DIAMETER DRILL BIT WITH A STOP.
 OR  NOTE: A PLUSNUT SETTING TOOL IS REQUIRED FOR PLUSNUT INSTALLATION AND IS NOT SUPPLIED WITH THIS KIT. ORDER PLUSNUT TOOLS FROM ADRIAN STEEL (P.N. 22200-0) OR USE AN AIR POWERED PLUSNUT SETTING GUN.	
NOTE: If your vehicle contains carpet or a rubber floor mat you will need to prepare the mounting locations using a 1-3/16" carpet cutter.	
1-3/16" DIAMETER CARPET CUTTER P.N. 31183-0. 	

	<p>Step 01</p> <p>Optional Based on Vehicle</p> <p>If your vehicle contains carpet or a rubber floor mat you will need to prepare the mounting locations. (if not, skip to STEP 02)</p> <p>Position the product to be installed into the vehicle and once you are satisfied with the mounting locations, mark the mounting locations. Using a 1-3/16" diameter carpet cutter. Select the appropriate floor spacers as shown in the illustration to the left. Set those aside for use later into the installation process. Once you have prepared the carpet/floor mat for mounting, proceed to STEP 02.</p>
	<p>Step 02</p> <p>Prepare Mounting Locations</p> <p>Using a drill and drill bit (see table at top of page for correct size) drill the mounting holes in the vehicle sheet metal to prepare for installing the plusnuts.</p> <p>If you are thru-bolting at any of the locations simply drill a hole that is 1/16" larger than the bolt size(s) for those locations.</p> <p>Once you have drilled the holes into the vehicle, the raw metal edges should be sealed using a self-etching primer to resist corrosion and potential fastener point failure.</p>
	<p>Step 03</p> <p>Setting Plusnuts</p> <p>Use a Air Powered Plusnut Setting Gun to "set the plusnut" or if installing manually with hand tools, assembly the following.</p> <p><u>1/4-20UNC Plusnut (FAS0052)</u> FAS0080 SCREW, HXHD, 1/4-20UNCx2.00", G8 FAS0067 WASHER, FLAT, 1/4"ID 22200-0 PLUSNUT TOOL</p> <p><u>5/16-18UNC Plusnut (FAS0091)</u> FAS0095 SCREW, HXHD, 5/16-18UNCx2.00", G8 FAS0086 WASHER, FLAT, 5/16"ID 22200-0 PLUSNUT TOOL</p> <p>Place barrel of the plusnut body in sheet metal thru hole until flange is flush with sheet metal.</p> <p>Using a 9/16" combination wrench of plusnut tool body and a second hand wrench, ratchet, or air tool, rotate the hex bolt head CW to draw plus nut flanges up (set the plusnut).</p> <p>Remove hex bolt, washer, and plusnut. Inspect installation.</p>

NISSAN, S-M-C Wing Kit Fasteners



Screw, BtnHd,
M8 x 30mm"
FAS0727



Screw, BtnHd,
M8 x 50"
FAS0742



Washer, Lock,
5/16"
FAS0085



Spacer, Floor,
11/16" Ht
03927-2



Washer, Flat,
5/16" ID
FAS0086



XMAS TREE
FASTENER
31177



Screw, THP,
1/4-20 x 3/4"
FAS0062



Screw HxHd,
1/4-20 x .75"
FAS0063



Nut, HxFlng,
1/4-20
FAS0055



Washer, Flat,
1/4" ID
FAS0067

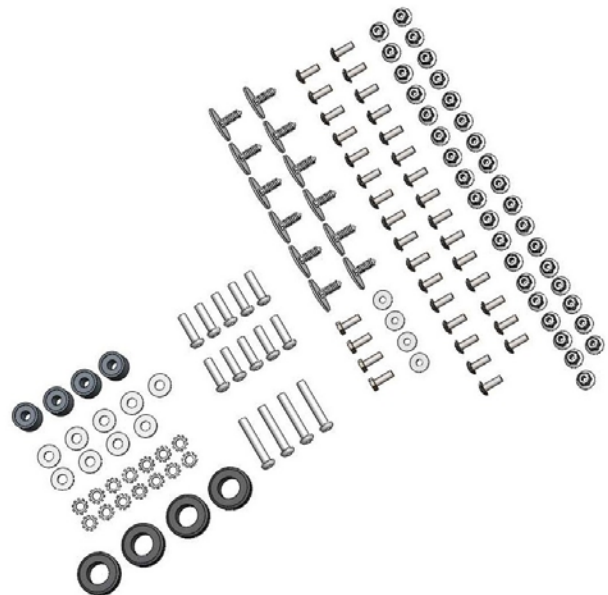


Grommet,
Rubber, 1" ID
36096-0

BAG40163

INSTALL BAG, WING KIT, NISSAN HIGH ROOF

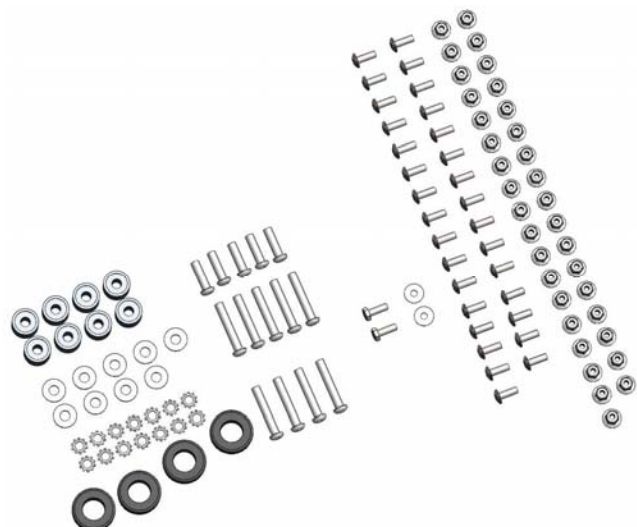
Part Number	Part Description	Qty
FAS0727	SCREW, BTN HD, M8 x 30MM	10
FAS0742	SCREW, BTN HD, M8 x 50MM	4
FAS0085	WASHER, LOCK, 5/16"	14
03927-2	SPACER,C/F 1006,11/16,FLR	4
FAS0086	WASHER, FLAT, 5/16"	9
31177	XMAS TREE FASTENER	12
FAS0062	SCREW,THP 1/4-20X.75 P/G5	31
FAS0063	SCREW, HEX HEAD 1/4-20x3/4"	4
FAS0055	NUT, HEX FLANGE 1/4-20	35
FAS0067	WASHER, FLAT, 1/4"	4
36096-0	GROMMET,RUBBER 1" ID	4



BAG40164

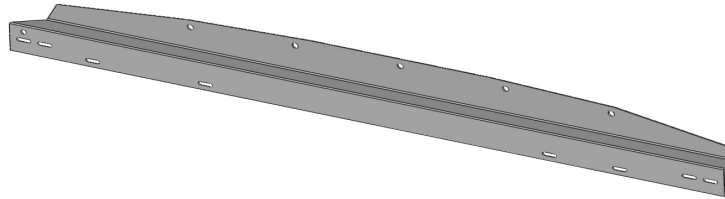
INSTALL BAG, WING KIT, NISSAN LOW ROOF

Part Number	Part Description	Qty
FAS0727	SCREW, BTN HD, M8 x 30MM	5
FAS0742	SCREW, BTN HD, M8 x 50MM	9
FAS0085	WASHER, LOCK, 5/16"	14
03927-2	SPACER,C/F 1006,11/16,FLR	8
FAS0086	WASHER, FLAT, 5/16"	9
FAS0062	SCREW,THP 1/4-20X.75 P/G5	31
FAS0063	SCREW, HEX HEAD 1/4-20x3/4"	2
FAS0055	NUT, HEX FLANGE 1/4-20	35
FAS0067	WASHER, FLAT, 1/4"	2
36096-0	GROMMET,RUBBER 1" ID	4

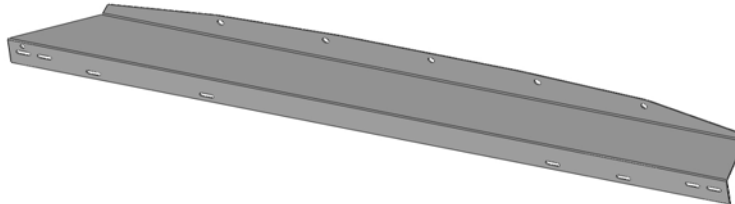


NISSAN S-M-C Partition Components

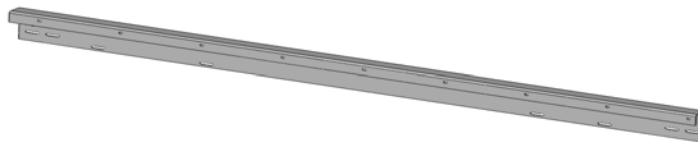
Low Roof Header Rail
STANDARD SETBACK
38446-G



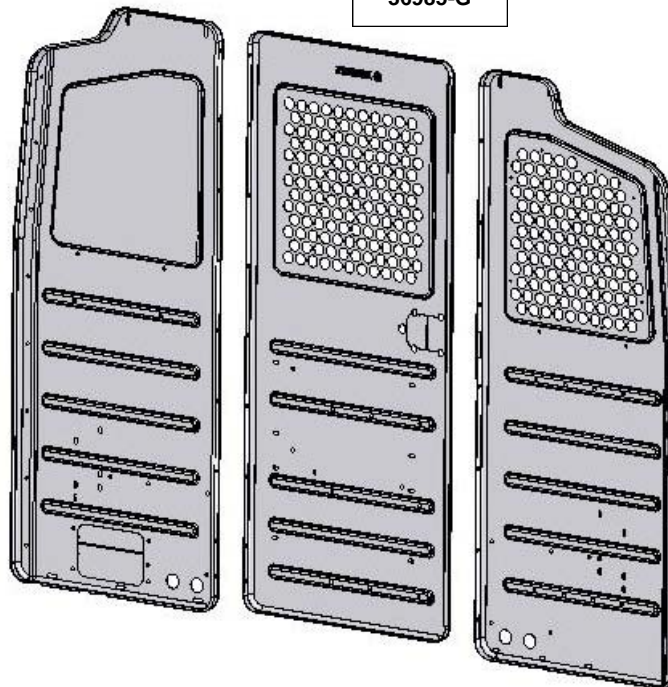
Low Roof Header Rail
3" SETBACK
38432-G



High Roof Header Rail
STANDARD and 3"
SETBACK
38413-G



M1/M2 Panels
36984-G
36985-G



S1/S2 Panels
36980-G
36981-G

C1/C2 Panels
36982-G
36983-G

STANDARD POSI-
TION FOOTER RAIL
36986-G

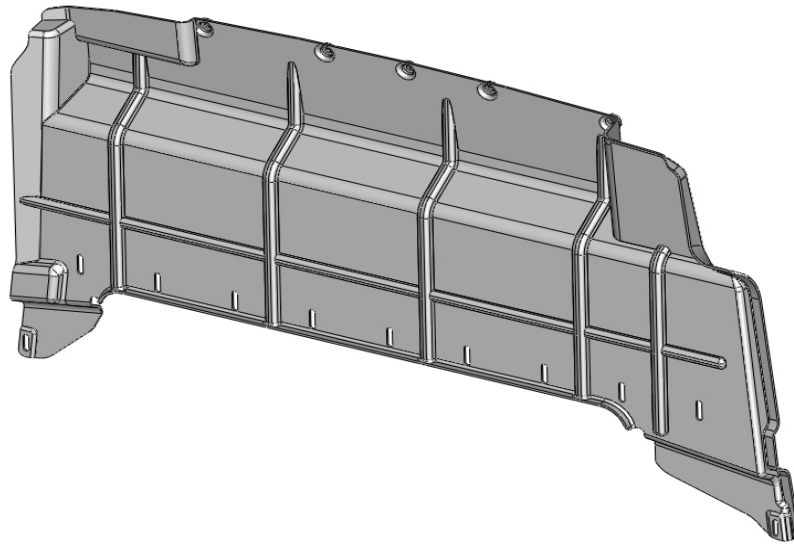


3" SETBACK POSITION
FOOTER RAIL
38433-G



NISSAN S-M-C Partition Components

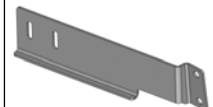
High Roof Header
Closeout Panel
STANDARD POSITION
38434-G



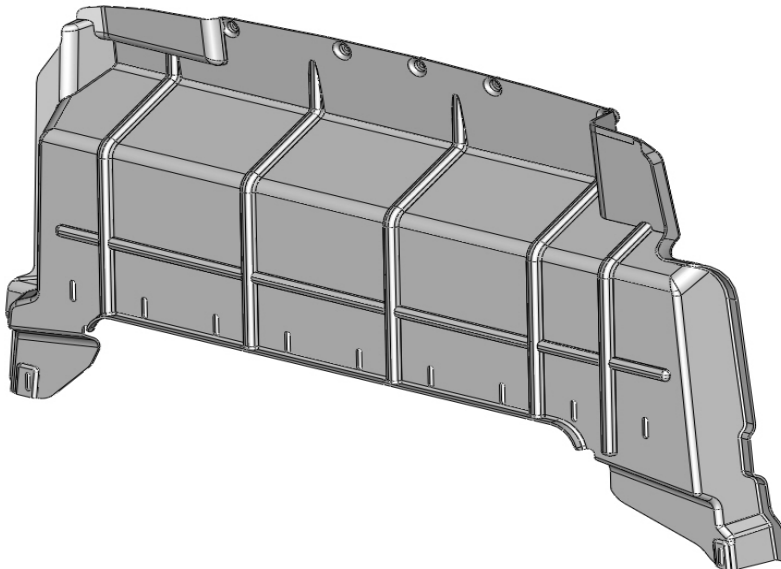
Partition, Header Bracket,
NISSAN
HIGH ROOF
STANDARD POSITION
Street Side
38430-G



Partition, Header Bracket,
NISSAN
HIGH ROOF
STANDARD POSITION
Curb Side
38431-0



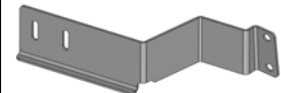
High Roof Header
Closeout Panel
3" SETBACK POSITION
38415-G



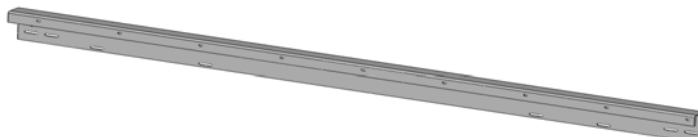
Partition, Header Bracket,
NISSAN
HIGH ROOF
3" SETBACK POSITION
Street Side
39355-G



Partition, Header Bracket,
NISSAN
HIGH ROOF
3" SETBACK POSITION
Curb Side
39356-G



High Roof Header Rail
STANDARD and 3"
SETBACK
38413-G



NISSAN S-M-C Partition Wing Kit Components

**NISSAN Wing kits are available in Standard and 3" Setback Locations.
Be sure you have the correct kit for your installation**

NISSAN WING KITS FOR STANDARD POSITION:

WKC1LCVS, NISSAN HIGH ROOF WING KIT
WKC1LCVH, NISSAN HIGH ROOF WING KIT

NISSAN WING KITS FOR 3" SETBACK POSITION:

WKC1LCVS3, NISSAN HIGH ROOF WING KIT
WKC1LCVH3, NISSAN HIGH ROOF WING KIT

NISSAN S-M-C Partition Wing Panels



Partition, Wing, NISSAN
STANDARD POSITION
Street Side
38414-G



Partition, Wing, NISSAN
STANDARD POSITION
Curb Side
38412-G



ASSIST HANDLE MOUNT
USED FOR ALL APPLICATIONS (CURB SIDE)
40017-G



Trim Pinchweld Seal
49" long
32398-0
2 EA.



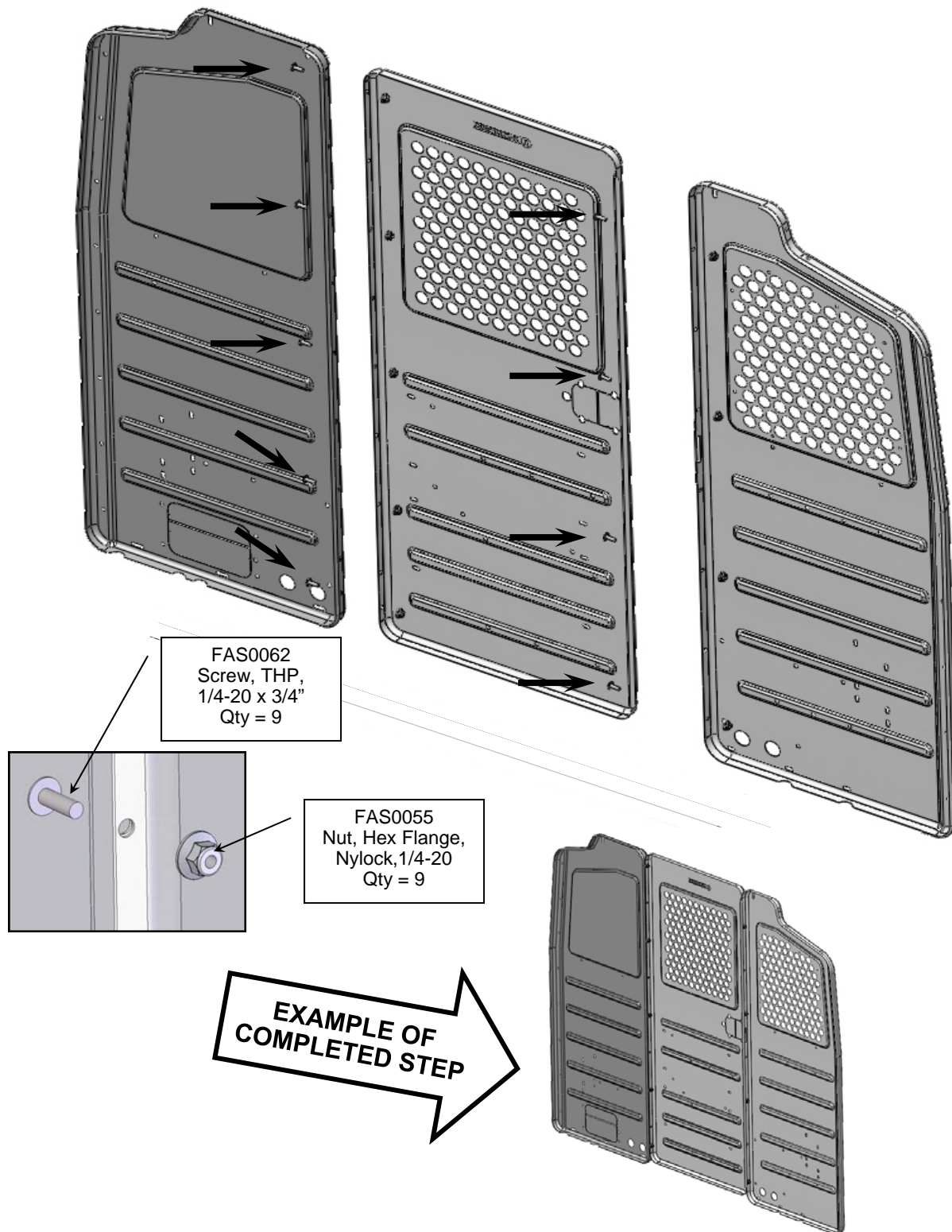
Partition, Wing, NISSAN
3" SETBACK POSITION
Street Side
38411-G



Partition, Wing, NISSAN
3" SETBACK POSITION
Curb Side
39354-G

Step 04 ASSEMBLE S-M-C PANELS

Assemble the "S" and "C" panels to the "M" panel as shown. (9) places indicated by bold arrow. Tighten all fasteners to Recommended torque specification 8 ft-lbs (+/- 2 ft-lbs)



Step 05A INSTALL APPROPRIATE FOOTER RAIL TO S-M-C PANELS

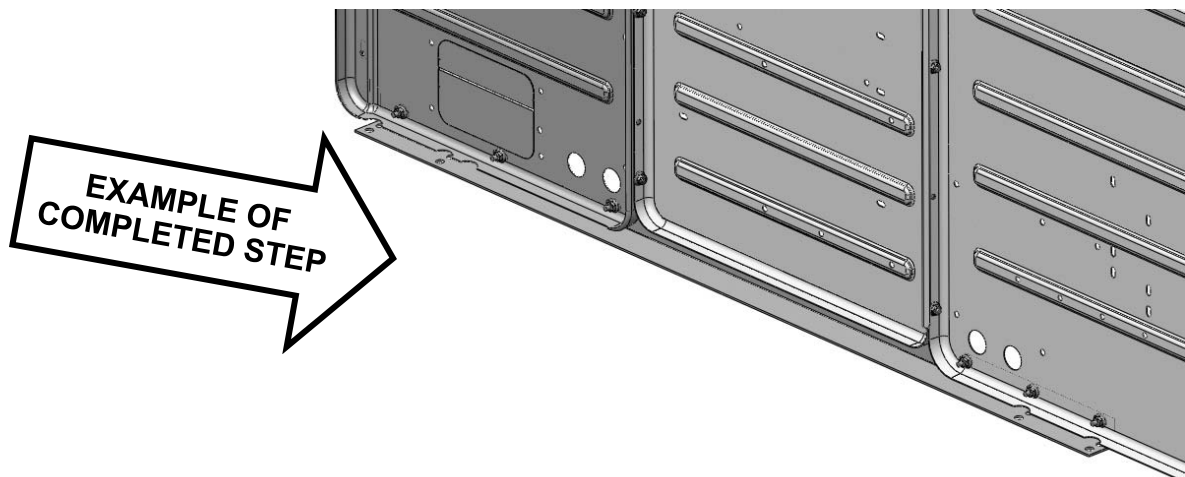
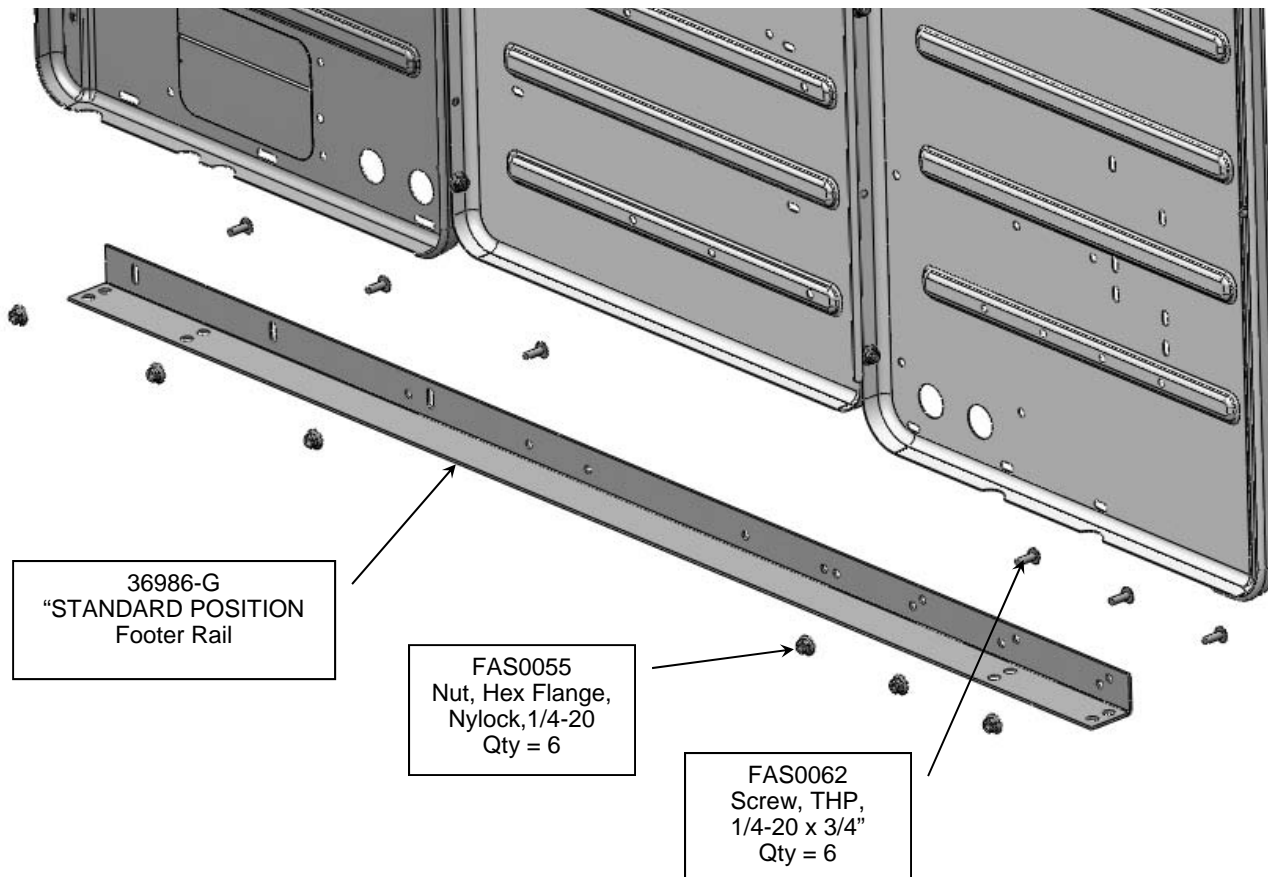
INSTALLING A STANDARD “CARGO” POSITION FOOTER RAIL

For +3” “Driver Comfort” position proceed to the next page!

Secure the appropriate FOOTER RAIL to the sub-assembled SMC panels.

IMPORTANT

Do not fully tighten fasteners at this point! These will be tightened during final installation in your vehicle.



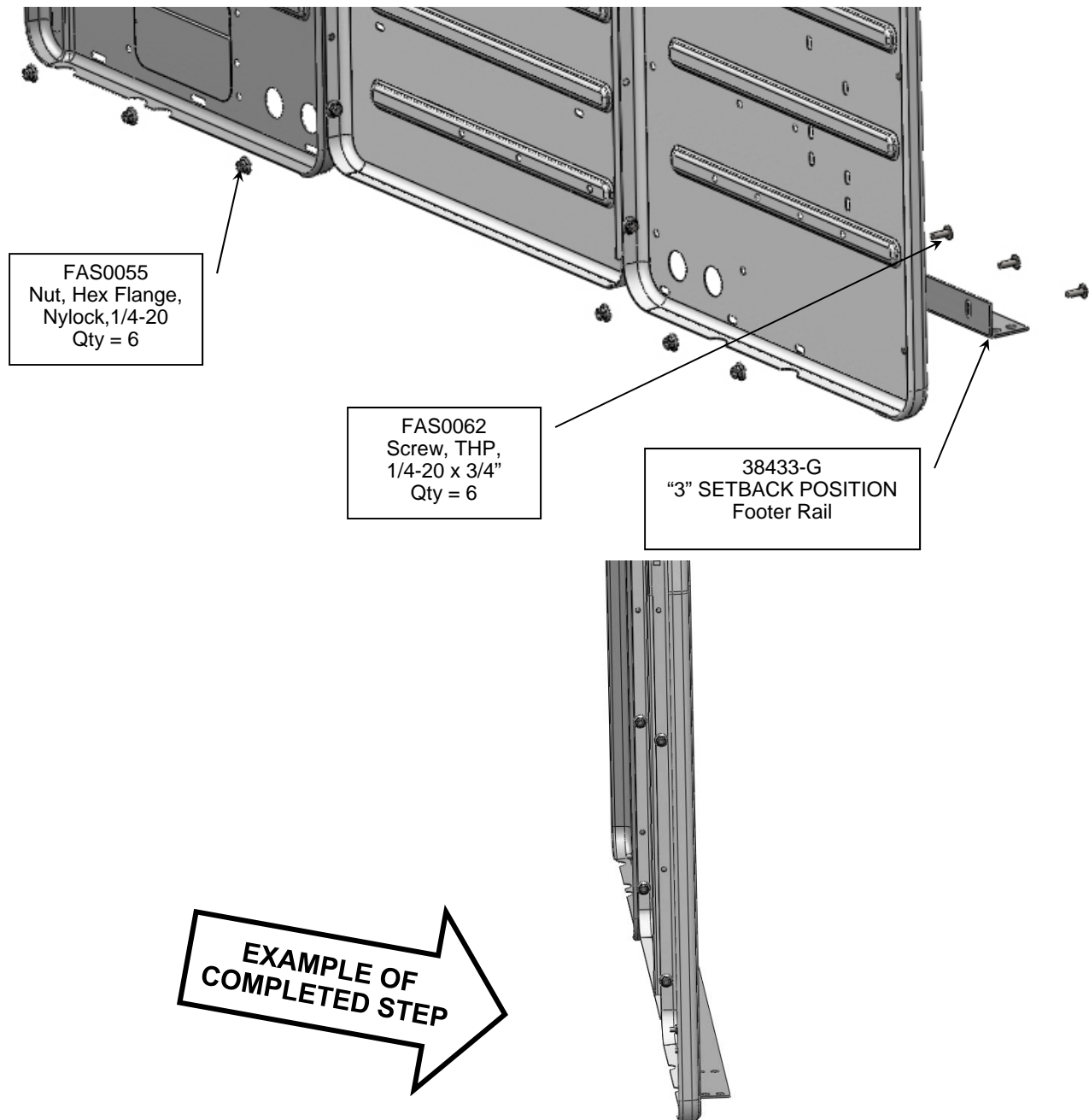
Step 05B INSTALL APPROPRIATE FOOTER RAIL TO S-M-C PANELS

INSTALLING A 3" SETBACK "DRIVER COMFORT" FOOTER RAIL

Secure the appropriate FOOTER RAIL to the sub-assembled SMC panels.

IMPORTANT

Do not fully tighten fasteners at this point! These will be tightened during final installation in your vehicle.



Step 06A INSTALL APPROPRIATE HEADER RAIL TO S-M-C PANELS

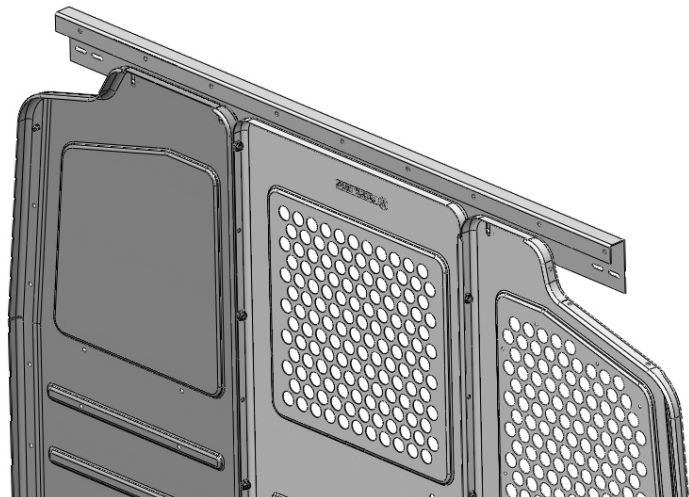
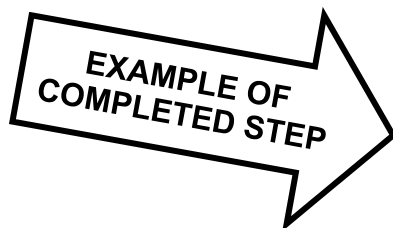
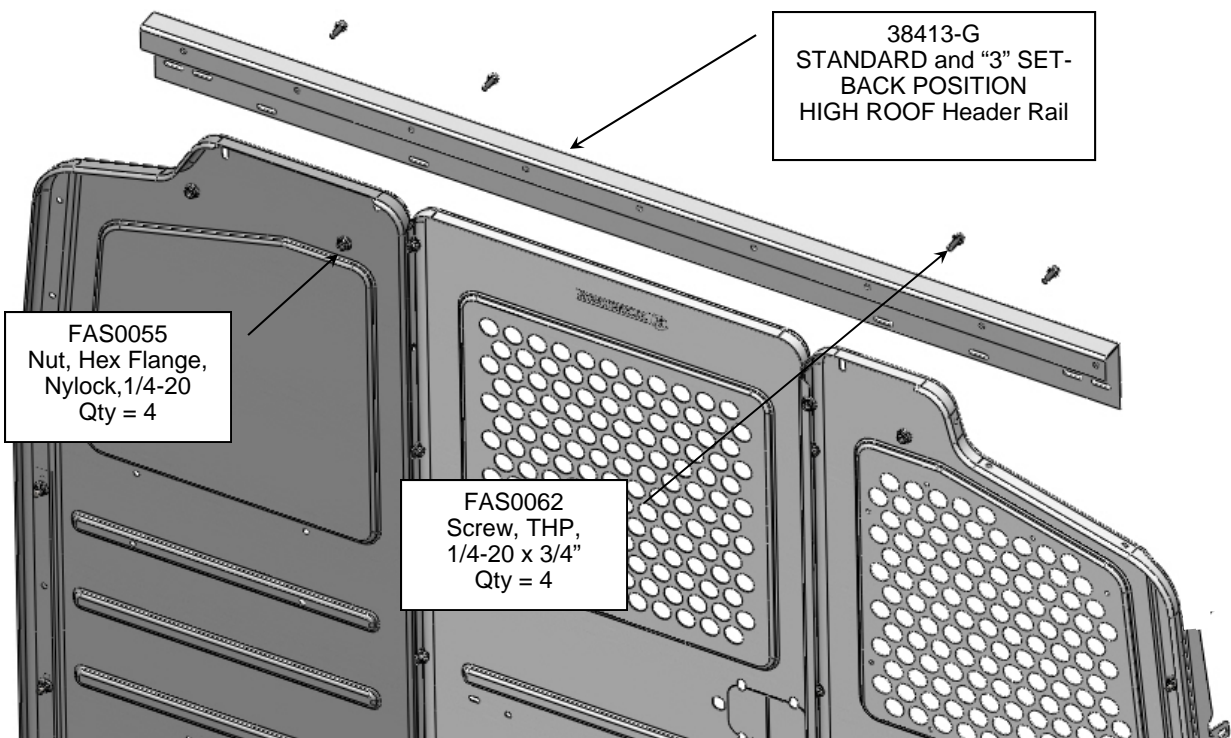
INSTALLING A STANDARD “CARGO” and 3” SETBACK POSITION HIGH ROOF HEADER RAIL.

For STANDARD “CARGO” position LOW ROOF proceed to the next page!

Secure the appropriate HEADER RAIL to the sub-assembled SMC panels.

IMPORTANT

Do not fully tighten fasteners at this point! These will be tightened during final installation in your vehicle.



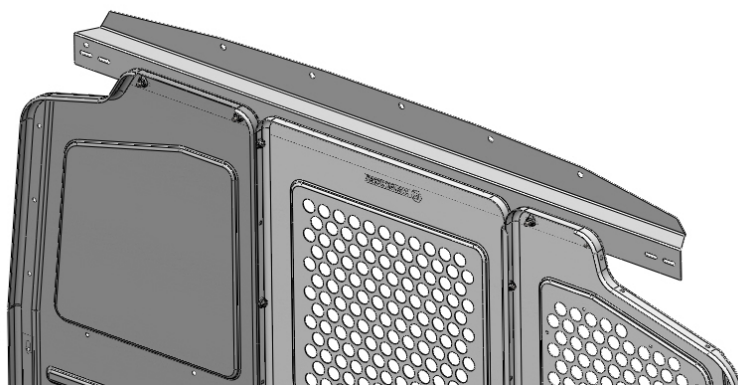
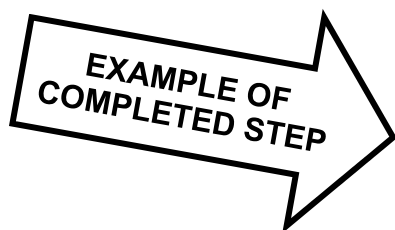
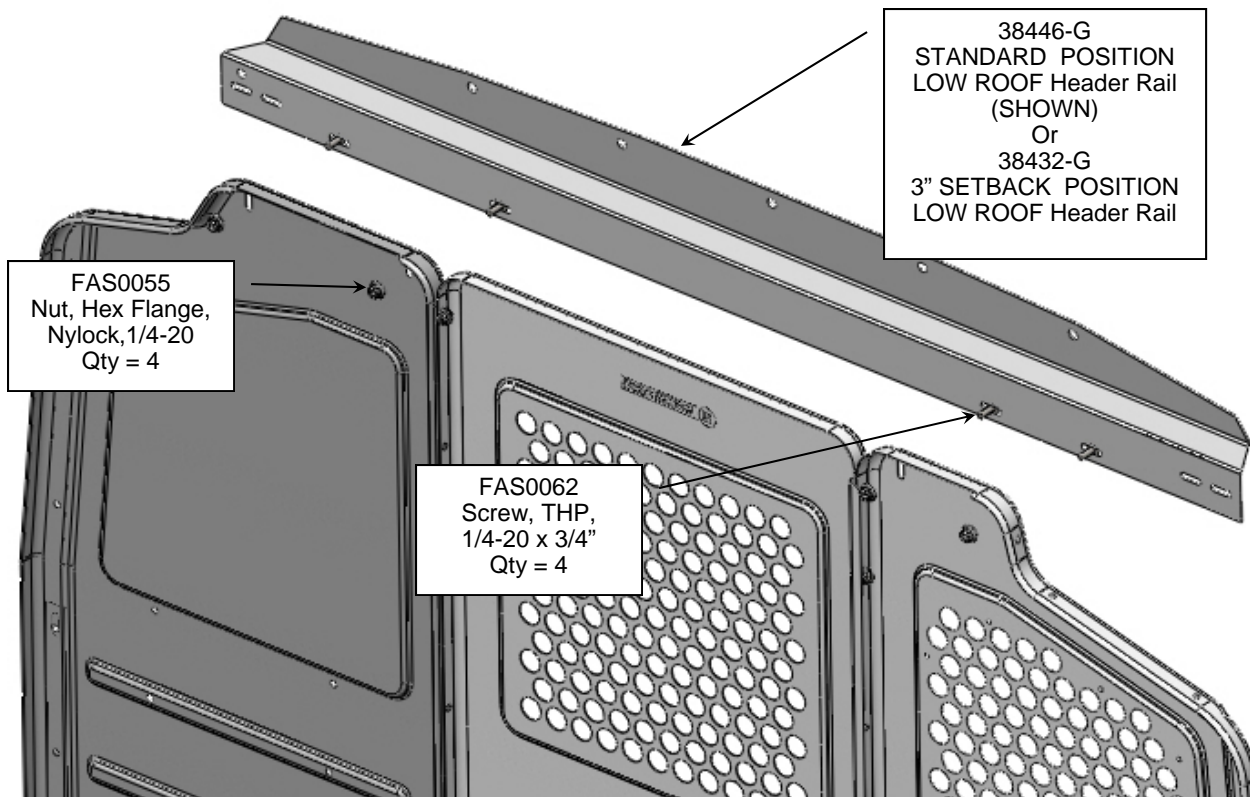
Step 06B INSTALL APPROPRIATE HEADER RAIL TO S-M-C PANELS

INSTALLING THE LOW ROOF HEADER RAIL.

Secure the appropriate HEADER RAIL to the sub-assembled SMC panels.

IMPORTANT

Do not fully tighten fasteners at this point! These will be tightened during final installation in your vehicle.



Step 07A INSTALL APPROPRIATE WINGS TO S-M-C PANELS

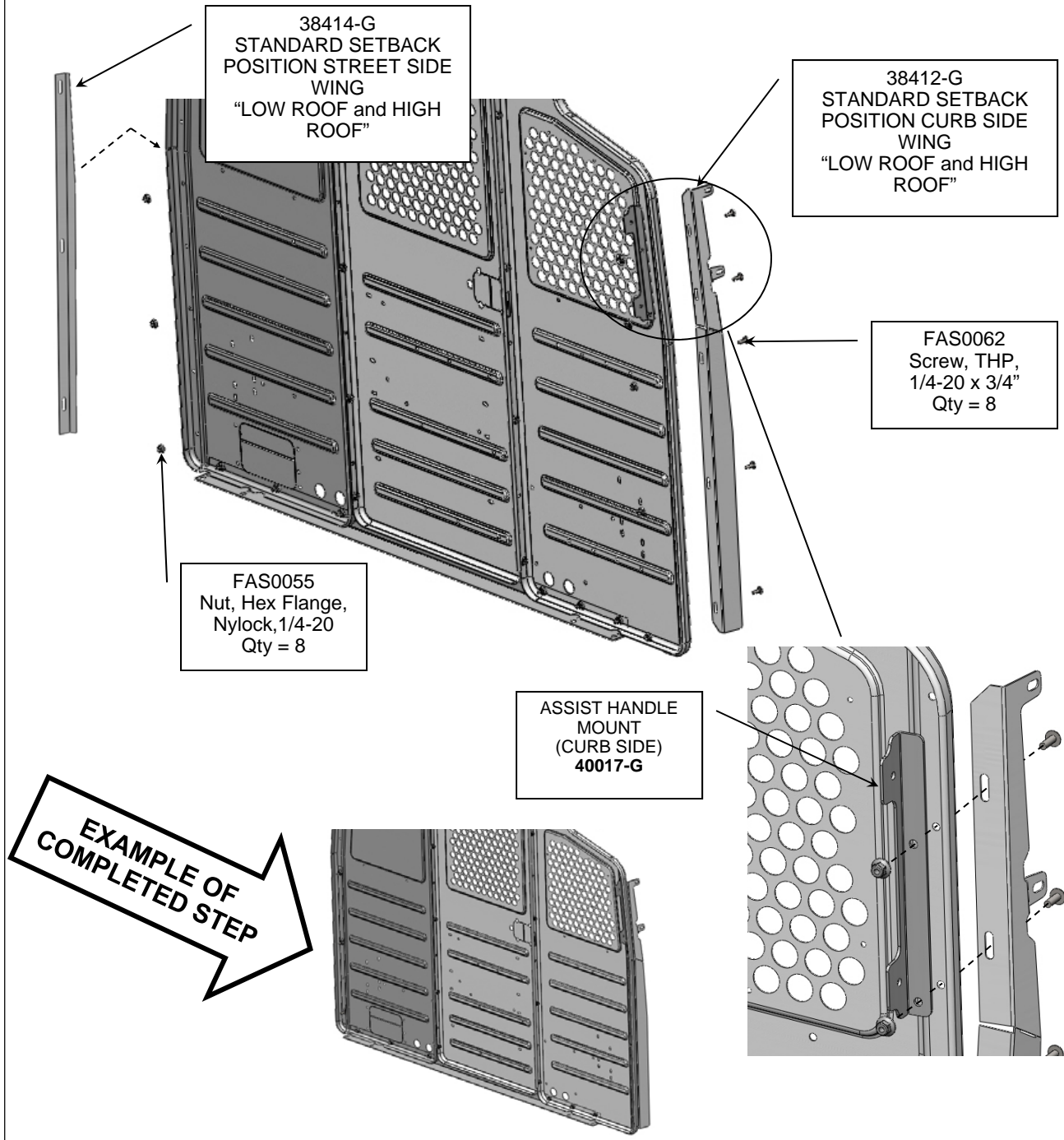
INSTALLING STANDARD “CARGO” POSITION WINGS.

For +3” “Driver Comfort” position WINGS proceed to the next page!

Secure the appropriate WINGS to the sub-assembled SMC panels and parts.

IMPORTANT

Do not fully tighten fasteners at this point! These will be tightened during final installation in your vehicle.



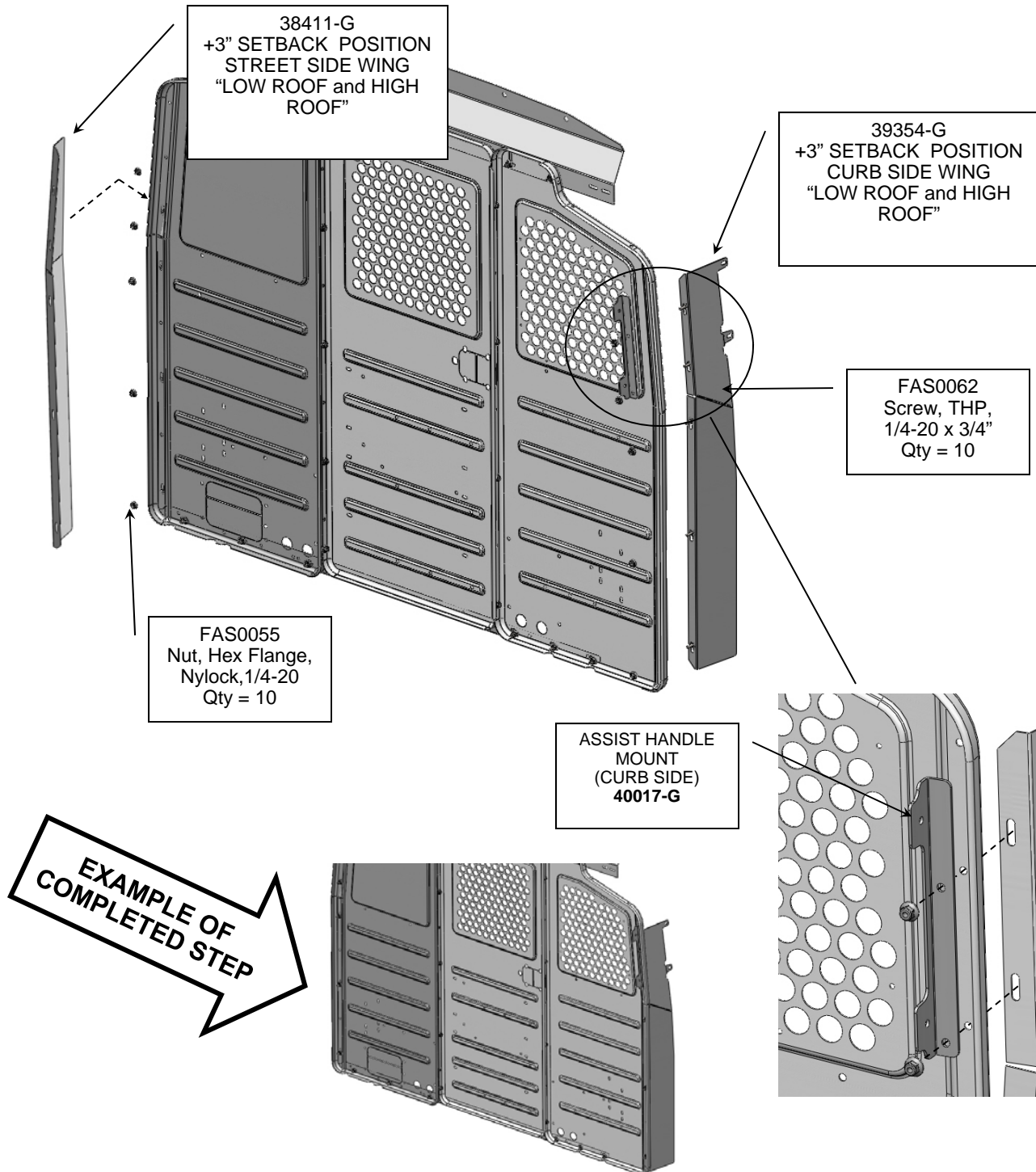
Step 07B INSTALL APPROPRIATE WINGS TO S-M-C PANELS

INSTALLING +3" "DRIVER COMFORT" POSITION WINGS.

Secure the appropriate WINGS to the sub-assembled SMC panels and parts.

IMPORTANT

Do not fully tighten fasteners at this point! These will be tightened during final installation in your vehicle.



Step 08A INSTALL APPROPRIATE HEADER BRACKET(S)

INSTALLING STANDARD “CARGO” POSITION HEADER BRACKET FOR LOW ROOF NISSAN.

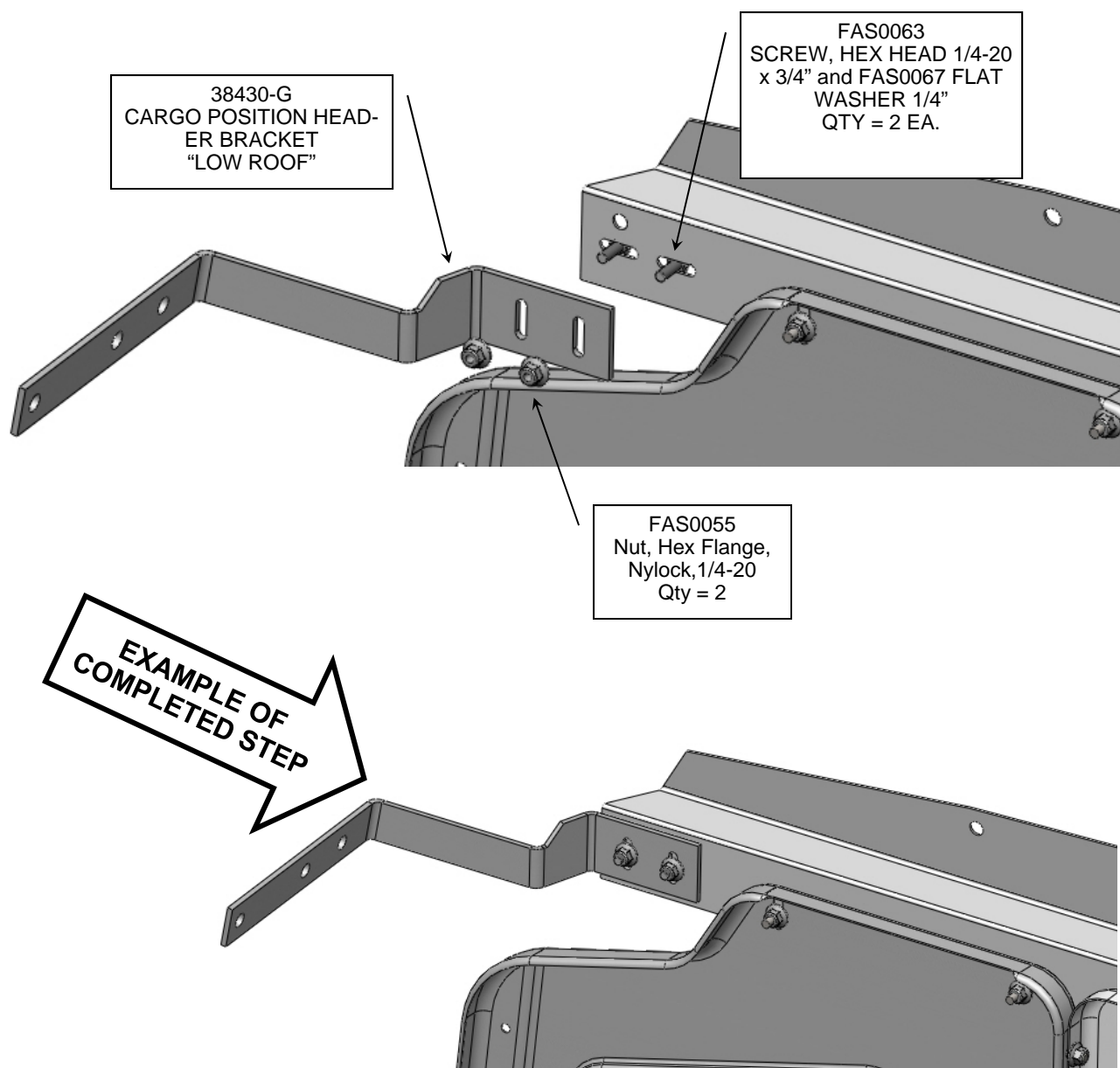
The LOW ROOF NISSAN applications only require a header bracket on the drivers side of the partition.

For HIGH ROOF BRACKETS proceed to the next page!

Secure the appropriate HEADER BRACKET(S) to the sub-assembled SMC panels and parts.

IMPORTANT

Do not fully tighten fasteners at this point! These will be tightened during final installation in your vehicle.



Step 08B INSTALL APPROPRIATE HEADER BRACKET(S)

INSTALLING +3" "DRIVERS COMFORT" POSITION HEADER BRACKET FOR LOW ROOF NISSAN.

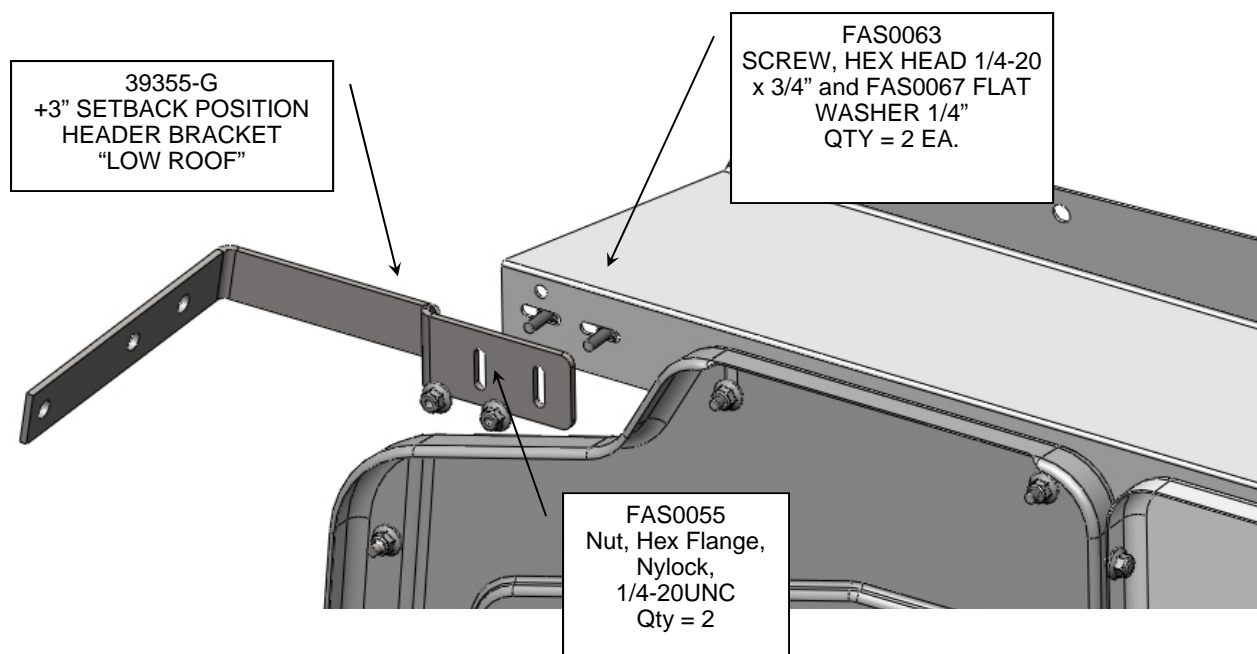
The LOW ROOF NISSAN applications only require a header bracket on the drivers side of the partition.

For HIGH ROOF BRACKETS proceed to the next page!

Secure the appropriate HEADER BRACKET(S) to the sub-assembled SMC panels and parts.

IMPORTANT

Do not fully tighten fasteners at this point! These will be tightened during final installation in your vehicle.



Step 08C INSTALL APPROPRIATE HEADER BRACKET(S)

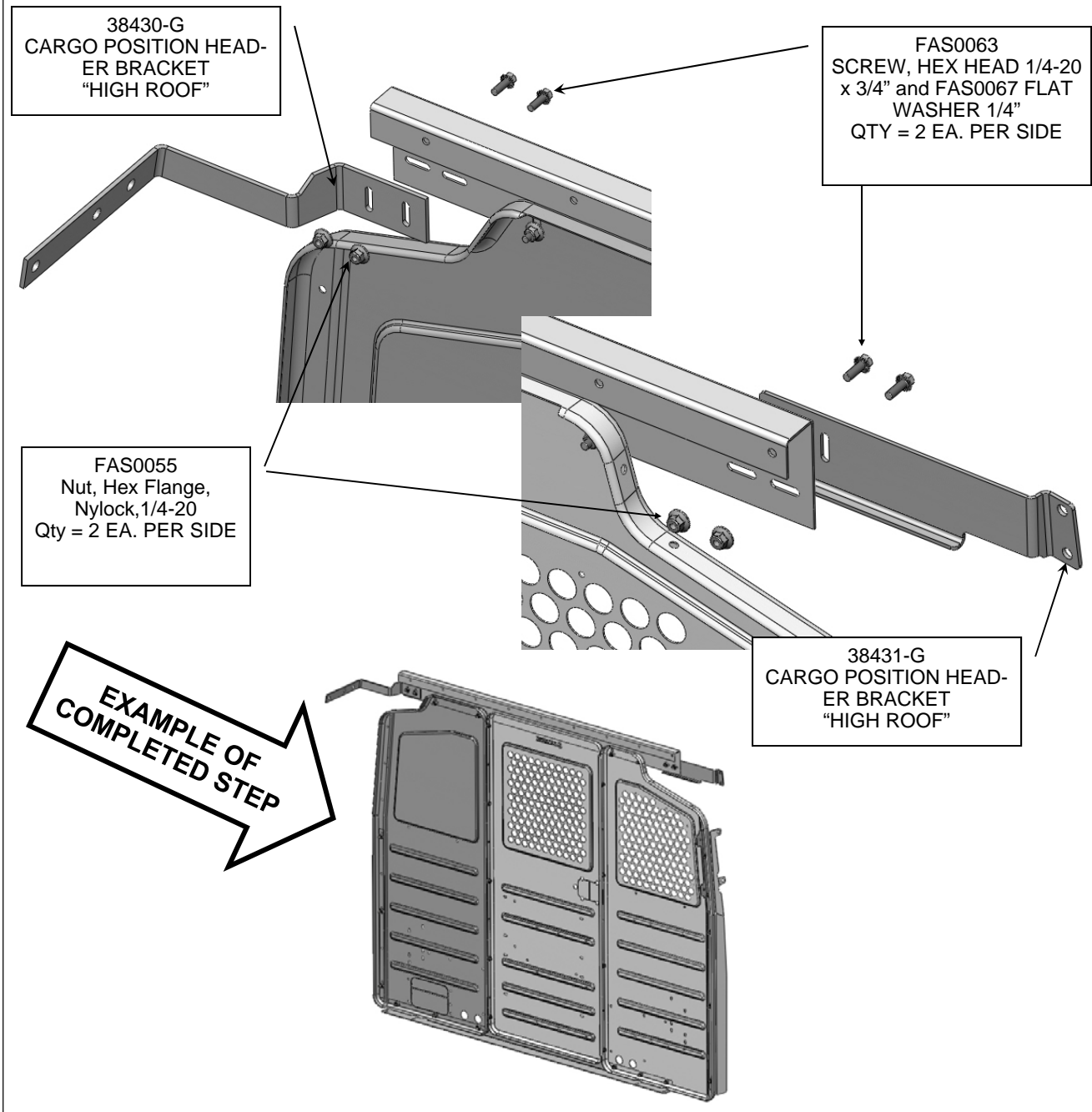
INSTALLING STANDARD “CARGO” POSITION HEADER BRACKETS FOR HIGH ROOF NISSAN.

For +3” (DRIVERS COMFORT) HIGH ROOF BRACKETS proceed to the next page!

Secure the appropriate HEADER BRACKET(S) to the sub-assembled SMC panels and parts.

IMPORTANT

Do not fully tighten fasteners at this point! These will be tightened during final installation in your vehicle.



Step 08D INSTALL APPROPRIATE HEADER BRACKET(S)

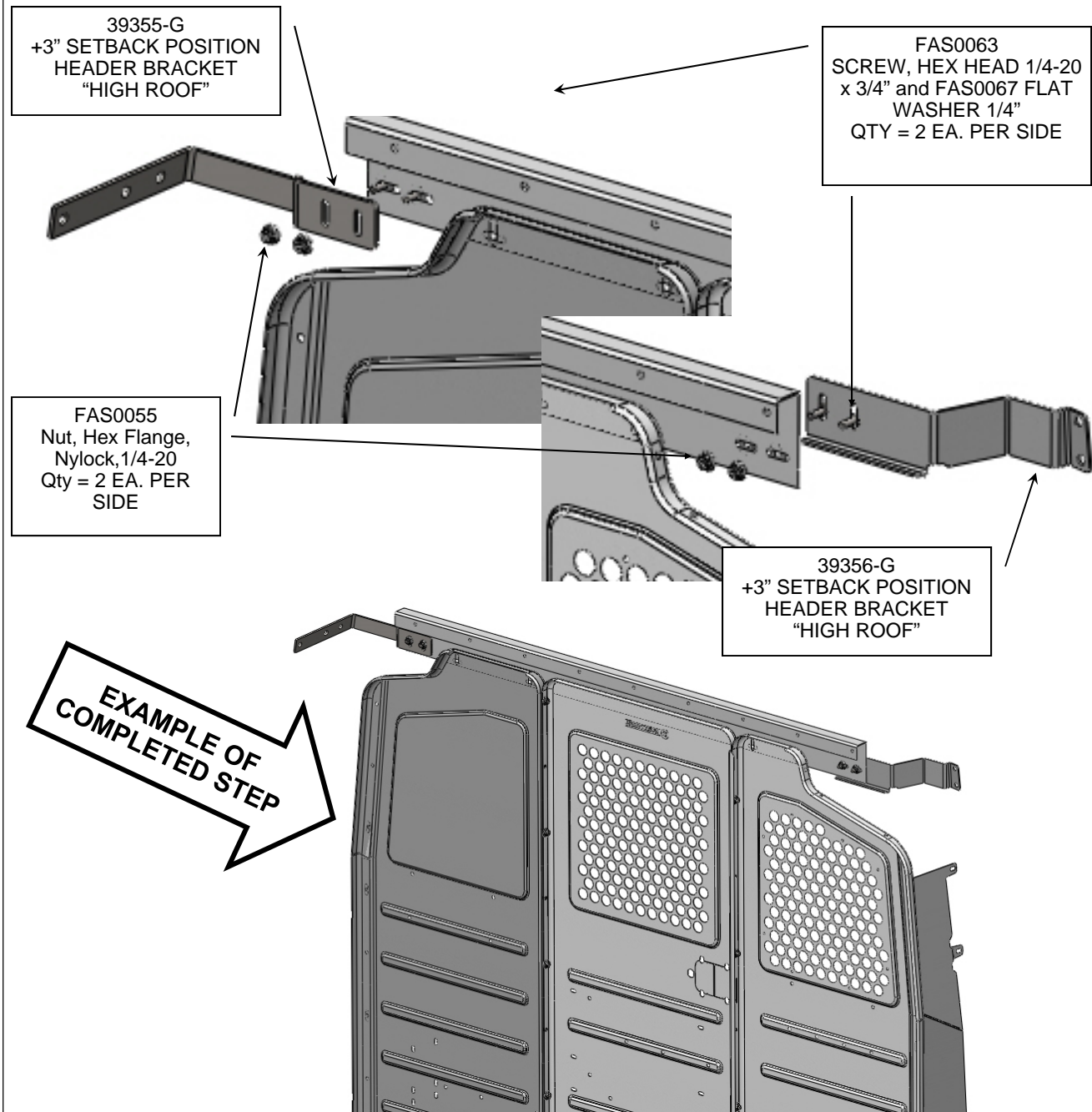
INSTALLING +3" "DRIVERS COMFORT" POSITION HEADER BRACKETS FOR HIGH ROOF NISSAN.

For +3" (DRIVERS COMFORT) HIGH ROOF BRACKETS proceed to the next page!

Secure the appropriate HEADER BRACKET(S) to the sub-assembled SMC panels and parts.

IMPORTANT

Do not fully tighten fasteners at this point! These will be tightened during final installation in your vehicle.



Step 09 INSTALL WING EDGE SEALS

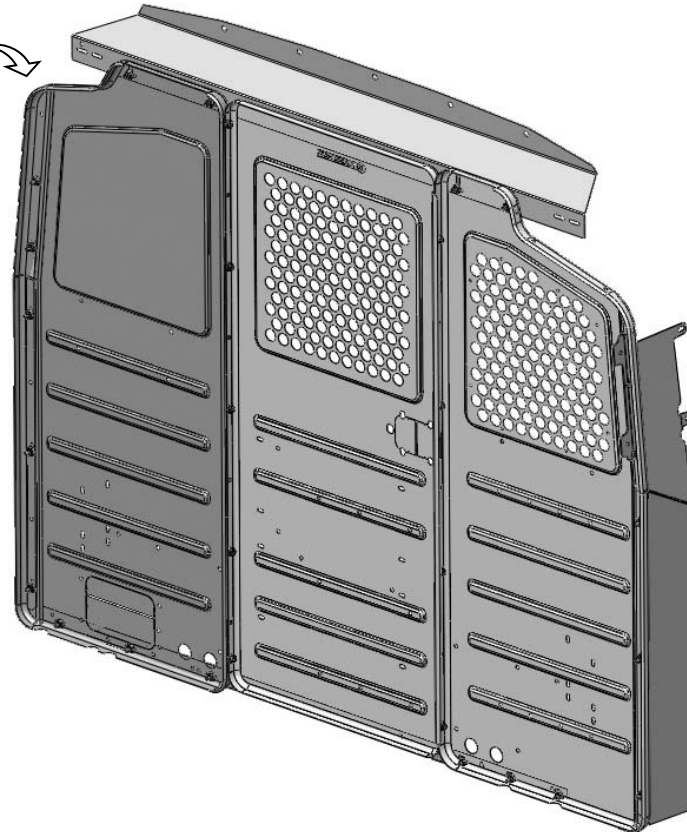
Secure the EDGE SEALS(S) to both FRONT wing edges on the SMC panel sub-assemblies .

Seal assembly shown is typical for all NISSAN wing kit variations.



TRIM PINCHWELD SEAL
49" LONG, 32398-0
QTY = 2 EA.

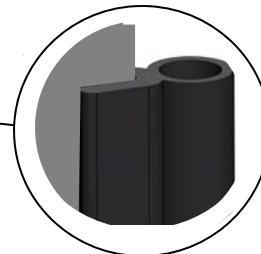
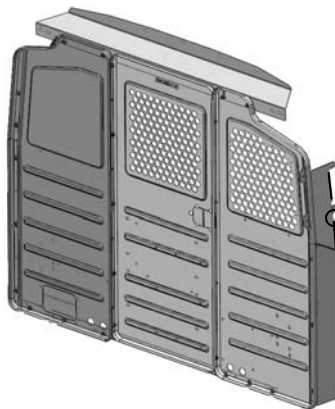
CUT TO 26"
FOR STANDARD
POSITION WING
KITS.



CUT TO 4-3/4"

CUT TO 30-1/4"

EXAMPLE OF
COMPLETED STEP



NOTE: For interiors that will have electrical wiring or cabling passing through the large holes at the bottom of the "S" or "C" panels, install the 7/8" Rubber Grommet (36096-0) in the holes.

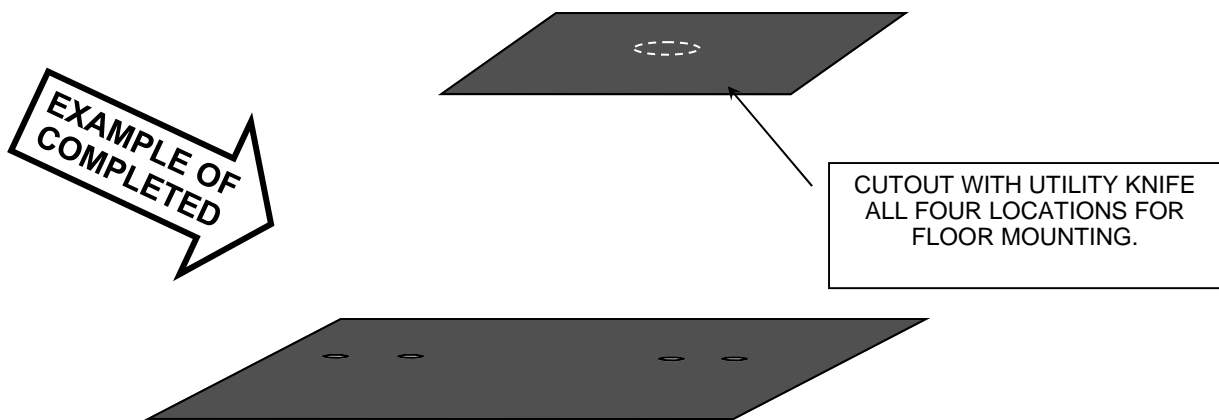
Step 10A VEHICLE PREPARATION

Prepare the vehicle for installing the partition by locating the weld nut locations in the vehicle floor. The NISSAN vehicle has four (4) factory installed M8 weld nuts located in the vehicle floor adjacent to, and slightly rearward of the B-Pillars. The locations have a perforation in the factory floor mat that shows where to cut out the floor mat.

IMPORTANT!

DO NOT USE CIRCULAR HOLE SAWS OR CIRCULAR CARPET CUTTERS TO CUT THE FLOOR MAT, AS THIS CAN DAMAGE AND WEAKEN THE VEHICLE SHEET METAL!

MANUALLY CUT THE PERFORATED FLOOR MAT.



Place one 03927-2 Floor Spacer into each of the four (4) floor mounting locations.

The next preparation step is to remove the factory grab handle that is located on the passenger side B-Pillar. This step requires that you carefully pop open the access panels and remove the handle from the OEM position. **IMPORTANT: Save the fasteners from this part! You will re-use them to secure the passenger side wing to the vehicle B-Pillar.**



The next preparation step is to **remove the factory head impact foam** that is installed above the sliding door just behind the B-Pillar. Set aside to be re-installed after modification.

Step 10B VEHICLE PREPARATION

REMOVING FOAM INSERT ABOVE SLIDING DOOR AND RE-INSTALLING

REMOVE BOLTS FROM NISSAN OEM HEAD IMPACT FOAM INSERT ABOVE CURB SIDE SLIDING DOOR. PLACE FOAM INSERT ON CLEAN FLAT SURFACE. CUT INSERT DOWN SO THERE IS APPROX 12" OF FOAM REMAINING. SEE PICTURE BELOW FOR REFERENCE.

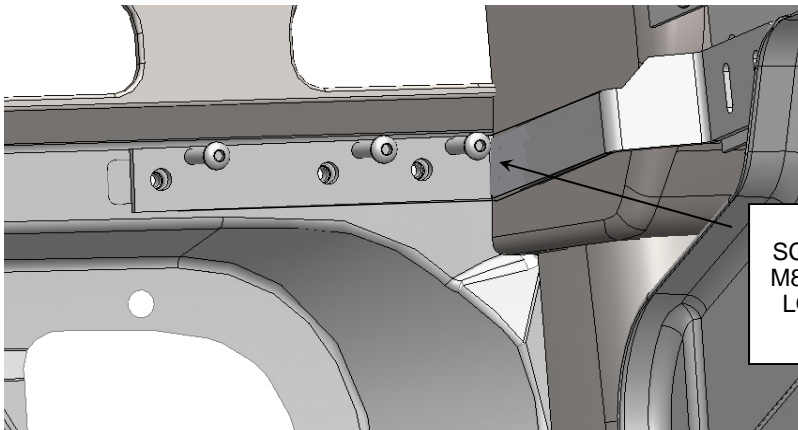


DISPOSE OF EXCESS FOAM INSERT THAT WAS CUT AWAY.
RE-INSTALL FOAM INSERT WITH OEM FASTENERS PREVIOUSLY REMOVED.
YOU ARE NOW READY TO INSTALL THE PARTITION. AFTER PARTITION IS INSTALLED, REDUCE SIZE OF FOAM INSERT IF NEEDED.

YOU SHOULD NOW BE READY TO INSTALL THE PARTITION INTO THE VEHICLE.

Step 11A PLACE THE PARTITION SUB-ASSEMBLY INTO VEHICLE

Using two people insert the partition sub-assembly into the vehicle through the side door. Place the floor rail into place first and pivot the upper portion of the partition up and forward into place. Temporarily secure the partition using the drivers side header bracket, FAS0727 M8 X 30mm cap screws and FAS0085 5/16" lock washers (If you are installing a rail kit DO NOT FULLY TIGHTEN THESE FASTENERS).

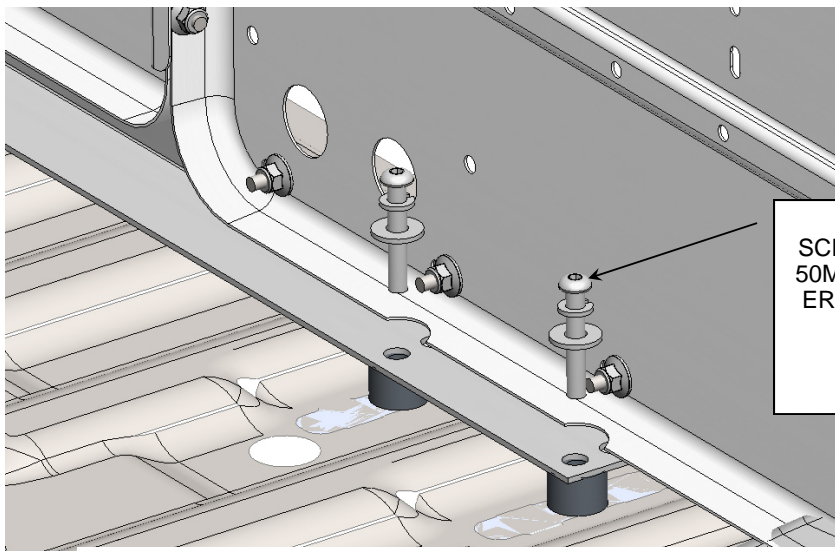


FAS0727
SCREW, BUTTON HEAD
M8 x 30MM and FAS0085
LOCK WASHERS 5/16"
QTY = 3 EA.

Standard Position bracket shown.
Typical fastening location for all NISSAN applications.

Now secure the partition to the floor of the vehicle as shown below using FAS0742 M8 X 50mm cap screws, FAS0085 5/16" lock washers and FAS0086 5/16" flat washers. Torque these fasteners to 12ft. Lbs. (+/- 2 ft-lbs)

If you are installing a "Standard Position" partition/wing kit you will access the floor fasteners from the rear (cargo side) of the partition. If you are installing a +3" "Driver Comfort" partition/wing kit you will access the floor fasteners from the front of the partition (SEE BELOW)



FAS0742
SCREW, BUTTON HEAD M8 x
50MM, FAS0085 LOCK WASH-
ERS 5/16" and FAS0086 5/16"
FLAT WASHERS.
QTY = 4 EA.

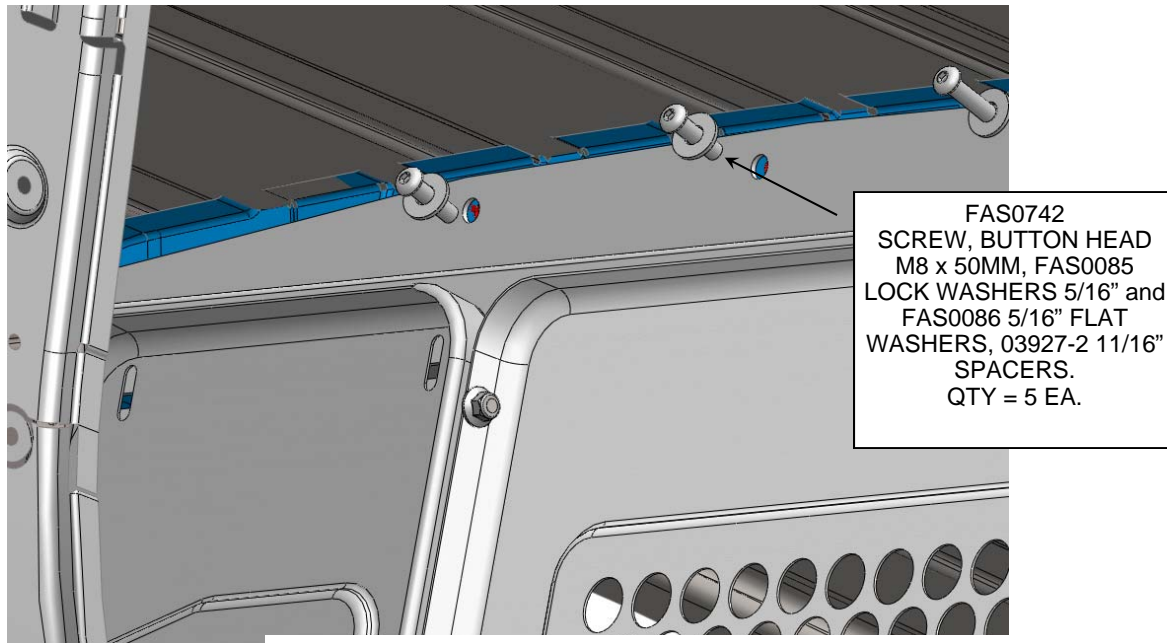
Standard Position floor rail shown.
Typical fastening location for all NISSAN applications.
 (NOTE: For installation clarity, OEM Floor mat and/or carpet is not shown.)

Step 11B SECURE THE PARTITION SUB-ASSEMBLY IN THE VEHICLE

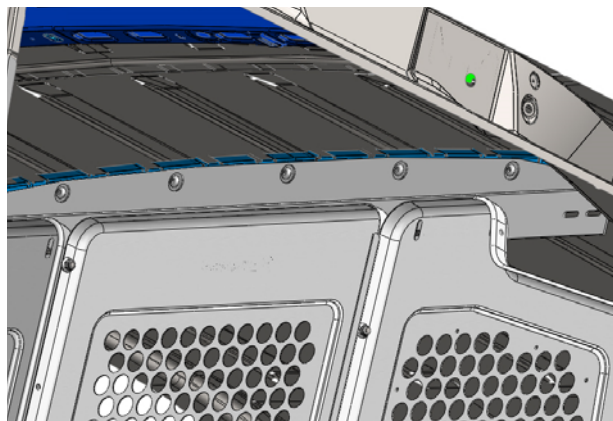
FASTEN THE LOW ROOF HEADER RAIL TO THE VEHICLE.

For HIGH ROOF INSTALLATION proceed to the next page!

Using FAS0742 M8 X 50mm cap screws, FAS0085 5/16" lock washers and FAS0086 5/16" flat washers, secure the LOW ROOF header rail to rearward surface of the vehicle "B-Pillar" roof bow using 03927-2 11/16" spacers between the roof bow and header rail as shown below. Torque these fasteners to 12ft.



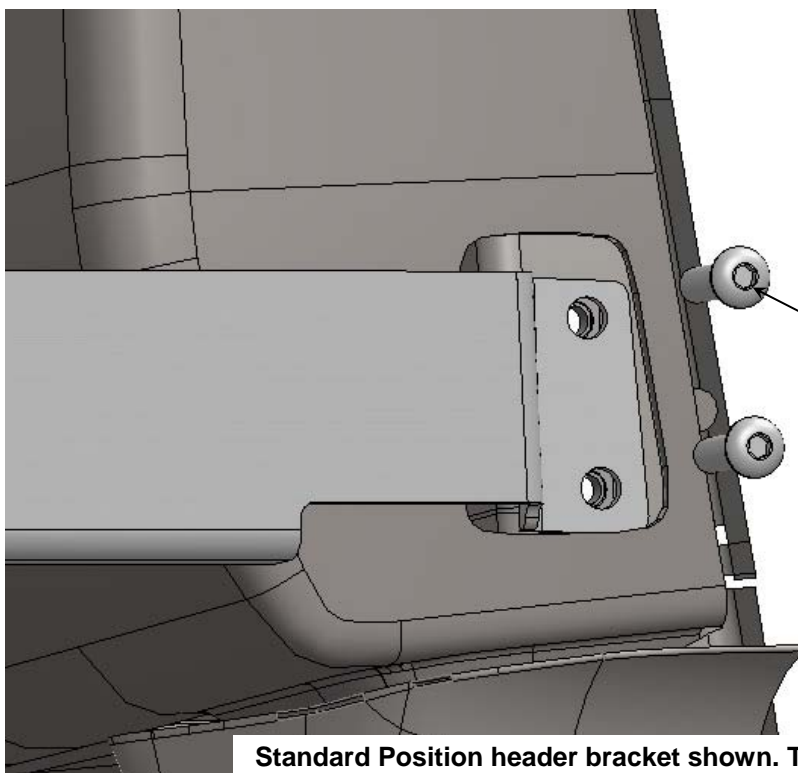
Standard Position header rail shown. The +3" setback installs in the same position using the same vehicle weld nuts (5 places).
Typical fastening location for all NISSAN applications.



Step 11C SECURE THE PARTITION SUB-ASSEMBLY IN THE VEHICLE

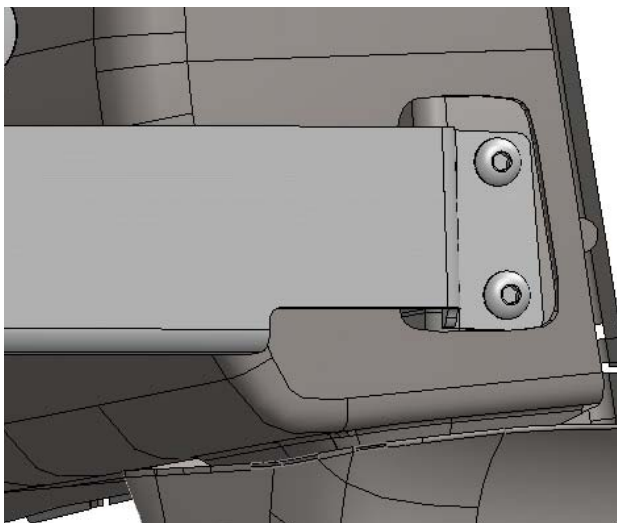
FASTEN THE HIGH ROOF PASSENGER SIDE HEADER BRACKET TO THE VEHICLE.

Using FAS0727 M8 X 30mm cap screws and FAS0085 5/16" lock washers, secure the HIGH ROOF header bracket to rearward surface of the vehicle passenger side "B-Pillar" as shown below. Torque these fasteners to 12ft. Lbs. (+/- 2 ft-lbs)



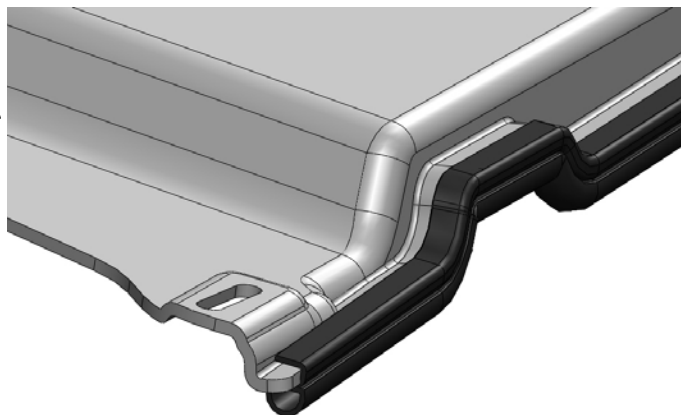
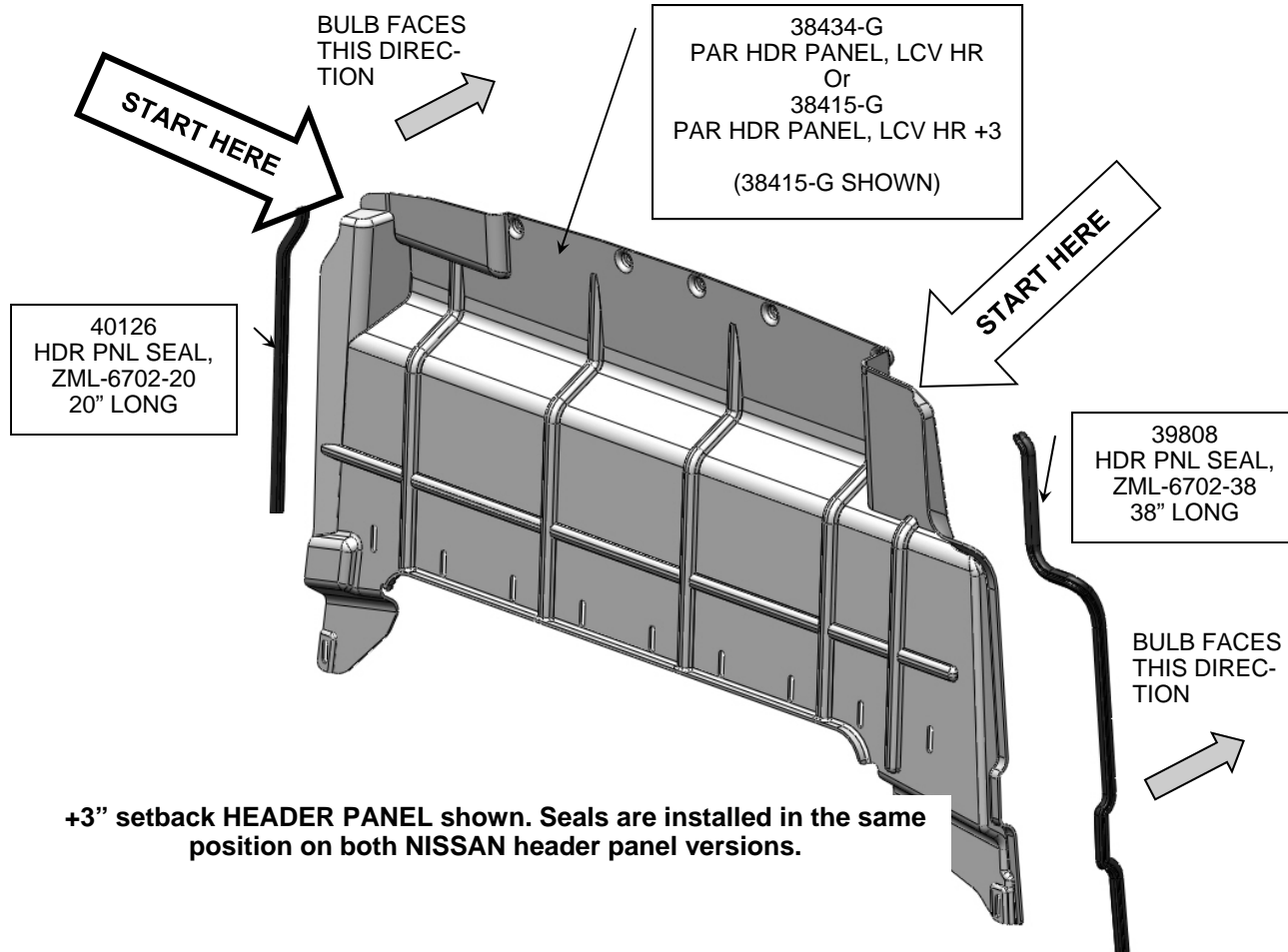
FAS0727
SCREW, BUTTON HEAD
M8 x 30MM and FAS0085
LOCK WASHERS 5/16"
QTY = 2 EA.

Standard Position header bracket shown. The +3" setback installs in the same position using the same vehicle weld nuts (2 places). Typical fastening location for all NISSAN HIGH ROOF applications.



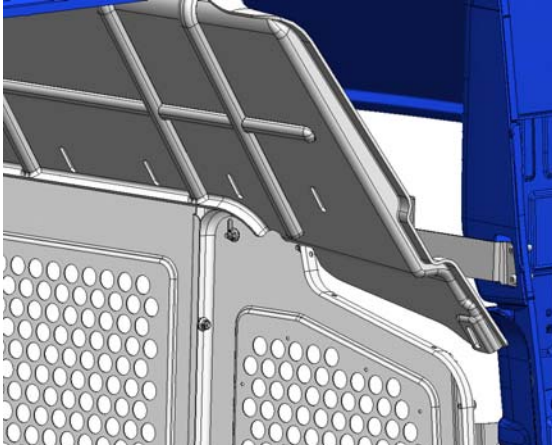
Step 11D PREPARE THE HIGH ROOF HEADER PANEL.

Attach the header panel seals to the header panel as shown. (Seals may need to be trimmed at the end of part due to application variations.)



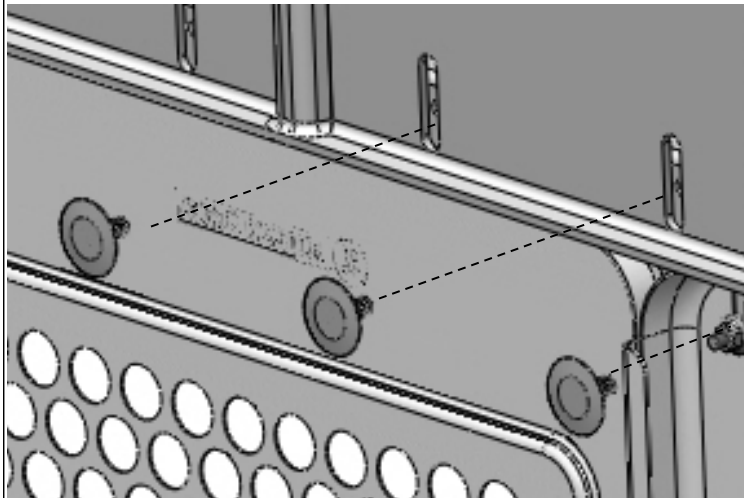
Step 11E INSTALL THE HIGH ROOF HEADER PANEL IN THE VEHICLE

Place the header panel into place in the vehicle as shown. Start by tipping the top portion of the panel rearward in the vehicle and inserting the bottom corners of the part between the partition panels and the header rail as shown below.

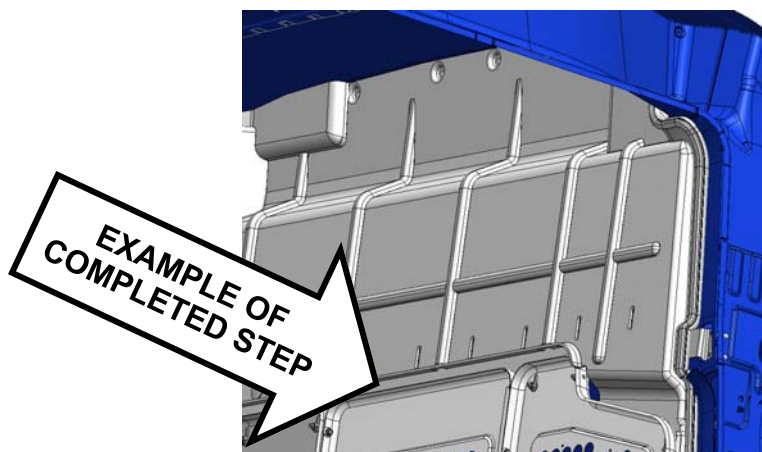
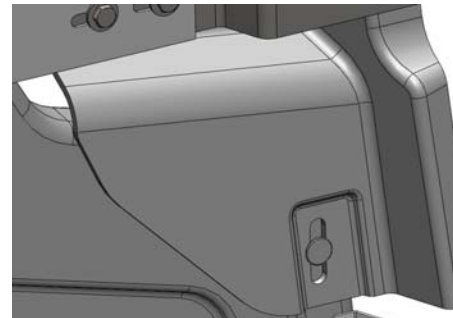


Standard position HEADER PANEL shown. (panel shown without seals for illustration clarity)

Pivot the panel forward into place with the top of the panel against the vehicle's B-Pillar roof bow. Using FAS0727 M8 X 30mm cap screws, FAS0085 5/16" lock washers and FAS0086 5/16" flat washers, secure the LOW ROOF header rail to rearward surface of the vehicle "B-Pillar" roof bow as shown below. Torque these fasteners to 6ft. Lbs. (+/- 2 ft-lbs) (REFER BACK TO PAGE 23 FOR FASTENER ILLUSTRATION.)

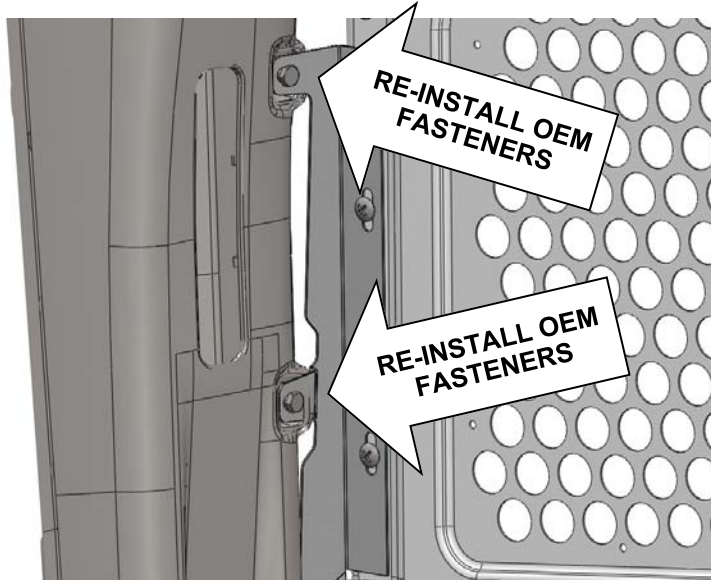


Insert 31177 XMAS TREE fasteners into the lower portion of the header panel and into the header rail (9 places). From the front (cab area) install (2) XMAS Tree fasteners into the bottom corners of the header panel and into the partition panels to secure the edges of the panel.



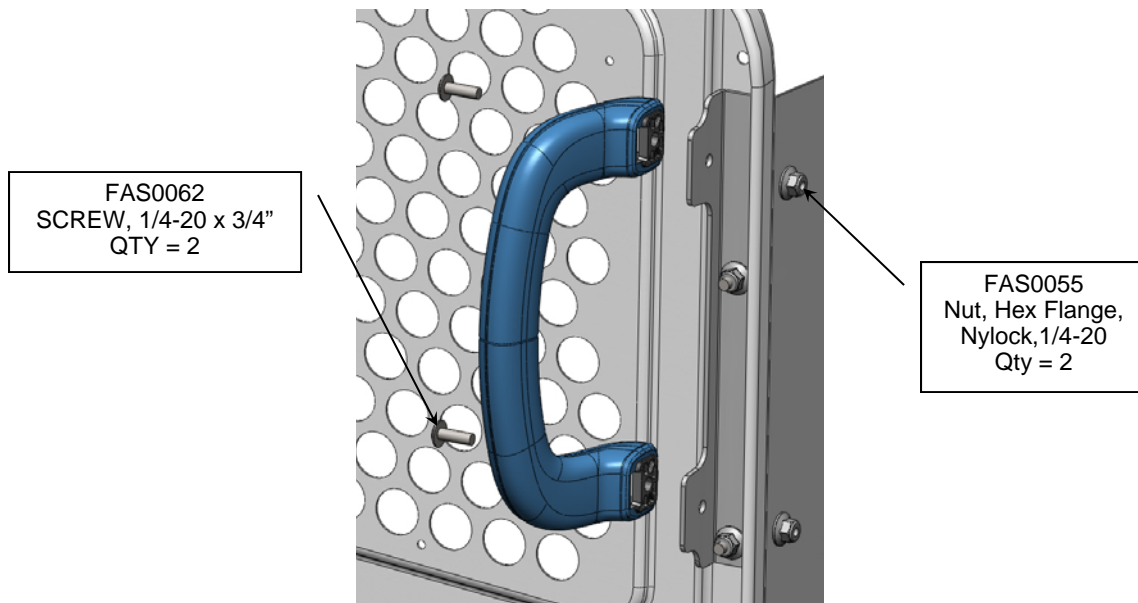
Step 12 SECURE CURBSIDE WING AND GRAB HANDLE

Using the OEM fasteners that you remove from the grab handle (refer back to page 20), secure the two tabs located on the forward upper portion of the wing to the vehicle B-Pillar as shown below.



Standard position WING shown. (Fastening method and location is identical for all versions of NISSAN curb side wings)

Using the OEM grab handle that you removed from the vehicle, re-install it on the grab handle bracket as shown, using FAS0062 Screws and FAS0055 Nylock nuts.



IMPORTANT!

Your final assembly step will be to tighten all of the fasteners that were initially installed to create the SMC sub assembly that includes the following attachments; PANELS TO PANELS, FLOOR RAIL TO PANELS, WINGS TO PANELS, HEADER RAILS TO PANELS AND HEADER BRACKETS TO PANELS. YOUR INSTALLATION IS NOW COMPLETE!