

PRODUCT WEIGHT
33.21 LBS

WIDTH x DEPTH x HEIGHT
68.2" x 13.4" x 54.5"

CAPACITY
N/A

COLOR
GRAY

CATALOG NUMBER
WKC1FDTS

**Partition panels shown for
illustrations purposes only. Panels
are sold separately.**

PRODUCT FEATURES

Steel partition wing kit (using appropriate panel kit) for Ford transit low roof provides a solution for separating the cab area from the cargo area. The steel partition features the use of OEM attachment points for a clean installation.

SEE PAGE 2 FOR APPLICATION NOTES AND ACCESSORIES, OTHER PRODUCTS THAT WORK WITH THIS UNIT.

Accessory Chart

	Cargo Side	Cab Side
	Base Partition BAGRKA1 REQUIRED (1 BAGRKA1 will allow for one accessory to be added)	None available
Available Accessories	-	-
PA7: Reflector kit	x	-
PA8: Fire ext.	x	-
PA9: First aid tray	x	-
PA10: Practice holder	-	-
PA11: Cab file	-	-
PA11NL: Catalog box	-	-
TA1: Four hook bar	-	-
TH30: 30lb tank holder	-	-
TH50: 50lb tank holder	-	-
UH50RM1: Rail mount kit	-	-
UH10: 1" hook	-	-
UH25: 2.5" hook	-	-
UH25CP-G: 2.5' hook comp	-	-
UH50: 5" hook	x	-

Introduction / Comments:

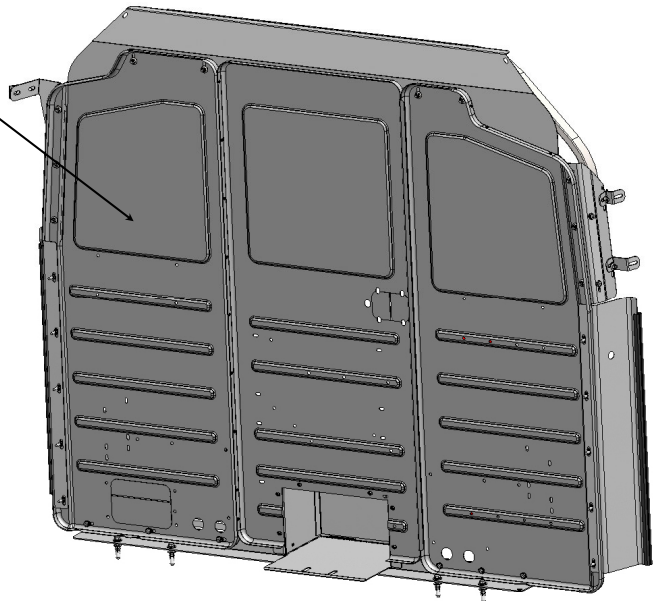
This Wing kit is designed to fit in your Standard Roof Ford Transit, used with the partition panel kit, which is ordered separately.

Note:

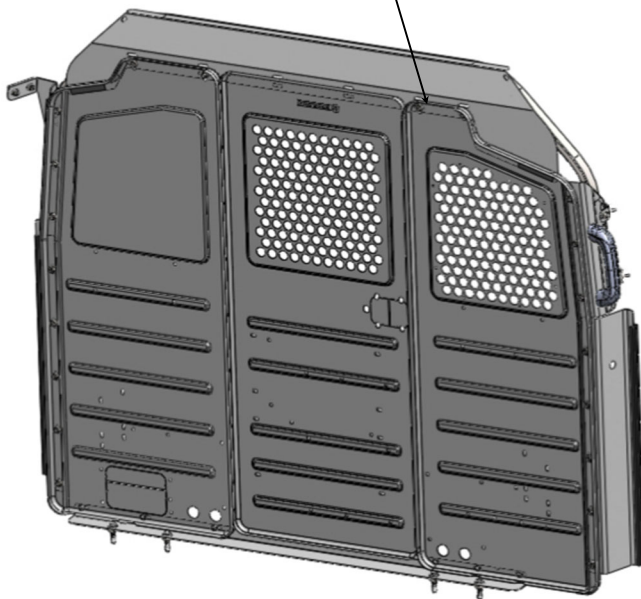
It is advised that all fasteners used in this assembly and installation should be checked for tightness at the following intervals: @ 2-weeks and again @ 6-weeks of operation. This preventive maintenance step must be completed to ensure your Partition gives you long service life.

SHOWING A COMPLETE
ASSEMBLY
S1M1C1TFSL—
PARTITION PANELS

SHOWING A COMPLETE
ASSEMBLY
S1M2C2FSV—
PARTITION PANELS
WKC1FDTS—WING KIT



**WKC1FDTSLP,
WKC1FTSLP2
LONG PARTS STORAGE
WING KIT, STD ROOF
FORD TRANSIT**



**WKC1FDTS
WING KIT, STD ROOF
FORD TRANSIT**

- PRECAUTIONS -





 **CAUTION** 
**THE USE OF AIR IMPACT TOOLS CAN
OVER-TORQUE FASTENERS AND
CAUSE FASTENER FAILURE!**





 **CAUTION** 
**ALL INSTALLATION HOLES SHOULD BE SEALED
WITH SILICON OR BUTYL SEALANT TO PREVENT
EXHAUST FUMES FROM ENTERING THE VEHICLE!**



 **DANGER** 
**INSPECT FOR FUEL TANK, FUEL LINES, BRAKE LINES, HIGH
VOLTAGE BATTERIES AND ELECTRICAL LINES PRIOR TO
DRILLING TO AVOID DAMAGING CRITICAL VEHICLE SYSTEMS
OR INJURY TO INSTALLER DURING INSTALLATION PROCESS!**



 **CAUTION** 
**TO AVOID DAMAGING THE VEHICLE ALWAYS USE DRILL
STOPS WHEN DRILLING ANY INSTALLATION HOLES!
ADRIAN AVAILABLE PART #'S 31121-0 (1/2" DEEP),
31122-0 (3/4" DEEP)**



- IMPORTANT WARRANTY REQUIREMENTS -

1. SUBSTITUTING ADRIAN STEEL SPECIFIED FASTENERS FOR ASSEMBLY AND/OR INSTALLATION WILL VOID YOUR PRODUCT WARRANTY.
2. ALL HOLES DRILLED INTO VEHICLE SHOULD HAVE THE RAW METAL EDGES SEALED WITH A SELF-ETCHING PRIMER TO RESIST CORROSION AND POTENTIAL FASTENER POINT FAILURE.
3. ALL FASTENERS USED IN THE INSTALLATION OF THIS PRODUCT SHOULD BE TIGHTENED TO THE TORQUE(S) SPECIFIED IN THESE INSTRUCTIONS.
4. THESE INSTRUCTIONS SHOULD BE KEPT WITH THE VEHICLE.

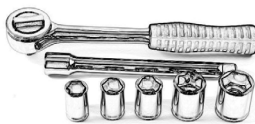
THE BASIC TOOLS NEEDED FOR MOST INSTALLATIONS



DRILL



DRILL BIT WITH
STOP



RATCHET, SOCKETS
AND/OR WRENCHES



SCREWDRIVERS



MEASURING TAPE

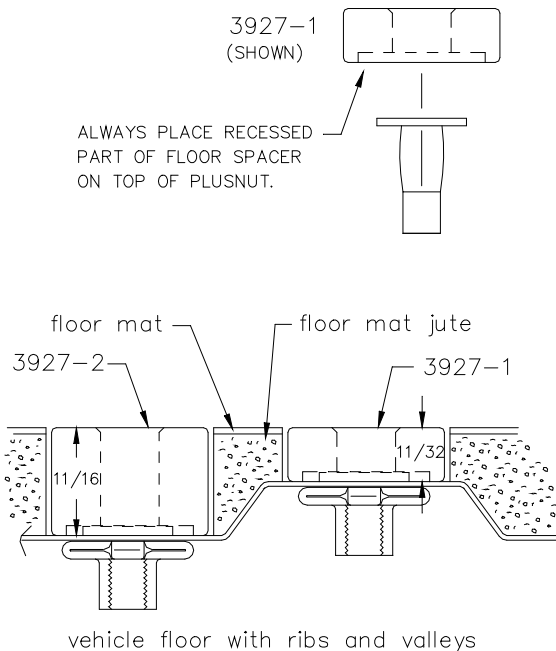
ADDITIONAL TOOLS MAY BE NEEDED FOR THIS INSTALLATION AND THEY WILL BE IDENTIFIED IN THE STEPS THAT FOLLOW.

If your vehicle contains carpet or a rubber floor mat you will need to prepare the mounting location. Position the product to be installed into the vehicle and once you are satisfied with the mounting locations, mark the mounting locations. Using a 1-3/16" diameter carpet cutter (P/N: 31183-0). Select the appropriate floor spacers as shown in the illustration. Set those aside for use later into the installation process.

Using the correct drill bit size for the selected plusnut, drill the mounting holes in the vehicle sheet metal to prepare for installing the plusnuts.

If you are thru-bolting at any of the locations simply drill a hole that is 1/16" larger than the bolt size(s) for those locations.

Once you have drilled the holes into the vehicle, the raw metal edges should be sealed using a self-etching primer to resist corrosion and potential fastener point failure.



A PLUSNUT (RIVNUT) SETTING TOOL IS REQUIRED FOR PLUSNUT (RIVNUT) INSTALLATION AND IS NOT SUPPLIED WITH THIS KIT. OR USE AN AIR POWERED PLUSNUT SETTING GUN.

1/4-20UNC Plusnut (FAS0052) Use 3/8" dia. drill w/stop

FAS0080 SCREW, HXHD, 1/4-20UNCx2.00", G8

FAS0067 WASHER, FLAT, 1/4"ID

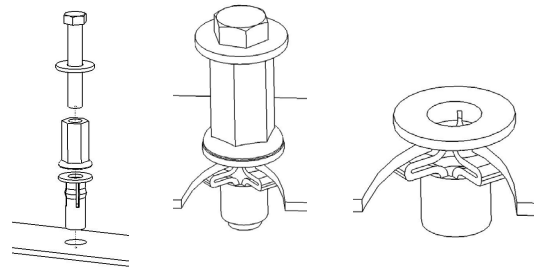
22200-0 PLUSNUT TOOL

5/16-18UNC Plusnut (FAS0091) Use 1/2" dia. drill w/stop

FAS0095 SCREW, HXHD, 5/16-18UNCx2.00", G8

FAS0086 WASHER, FLAT, 5/16"ID

22200-0 PLUSNUT TOOL

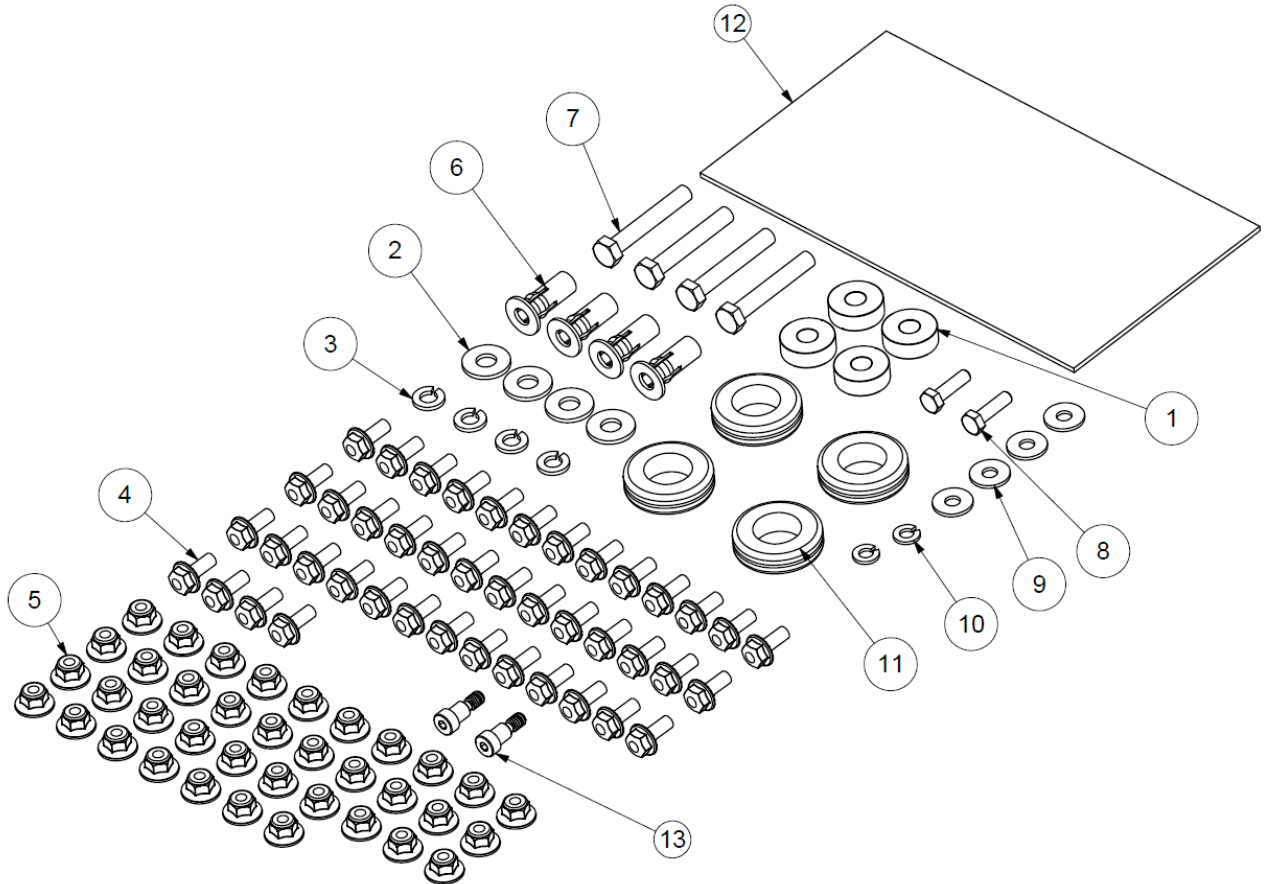


Place barrel of the plusnut body in sheet metal thru hole until flange is flush with sheet metal.

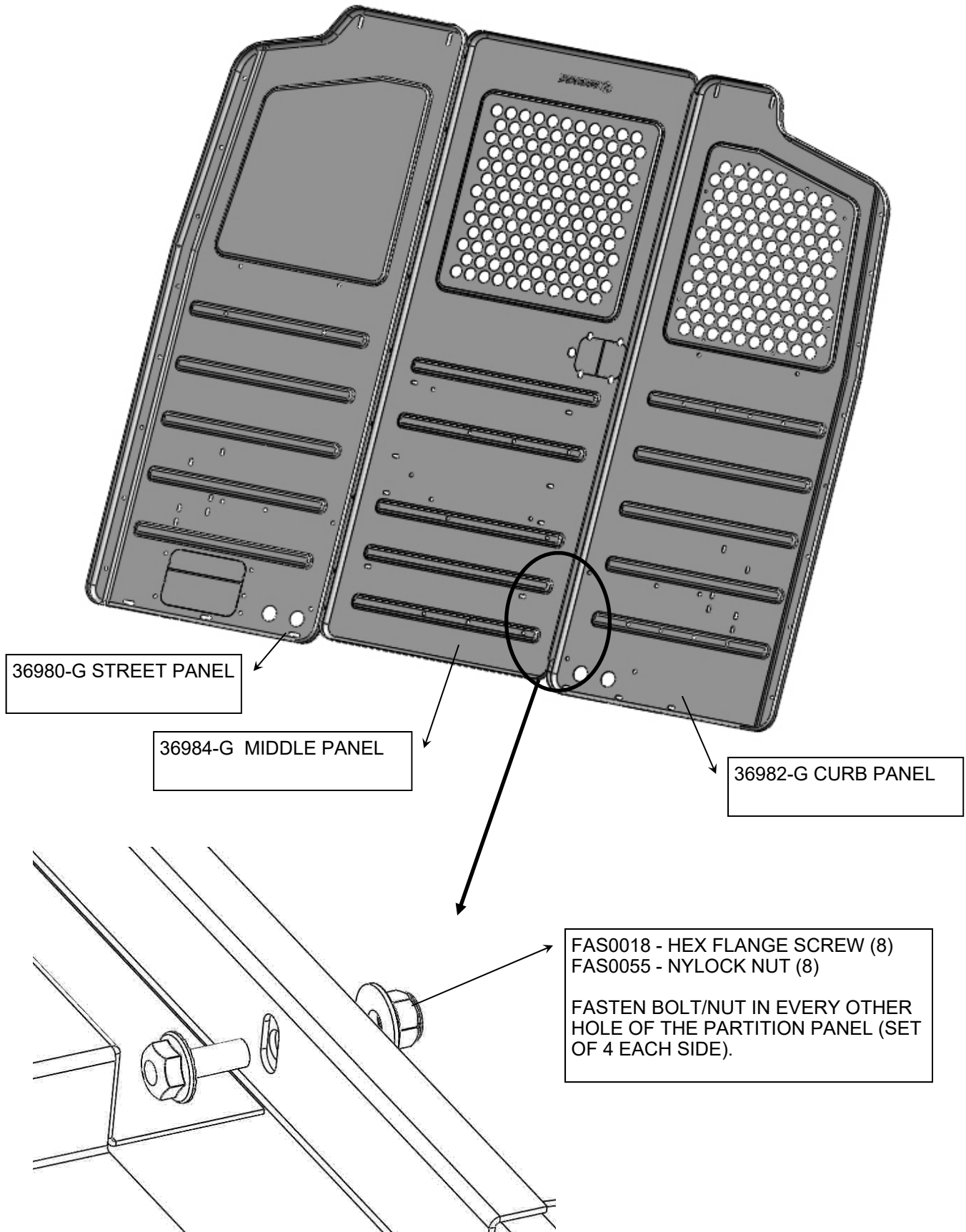
Using a 9/16" combination wrench of plusnut tool body and a second hand wrench, ratchet, or air tool, rotate the hex bolt head CW to draw plus nut flanges up (set the plusnut).

Assembly and Installation Fastener Identification Sheet (BAG45329)

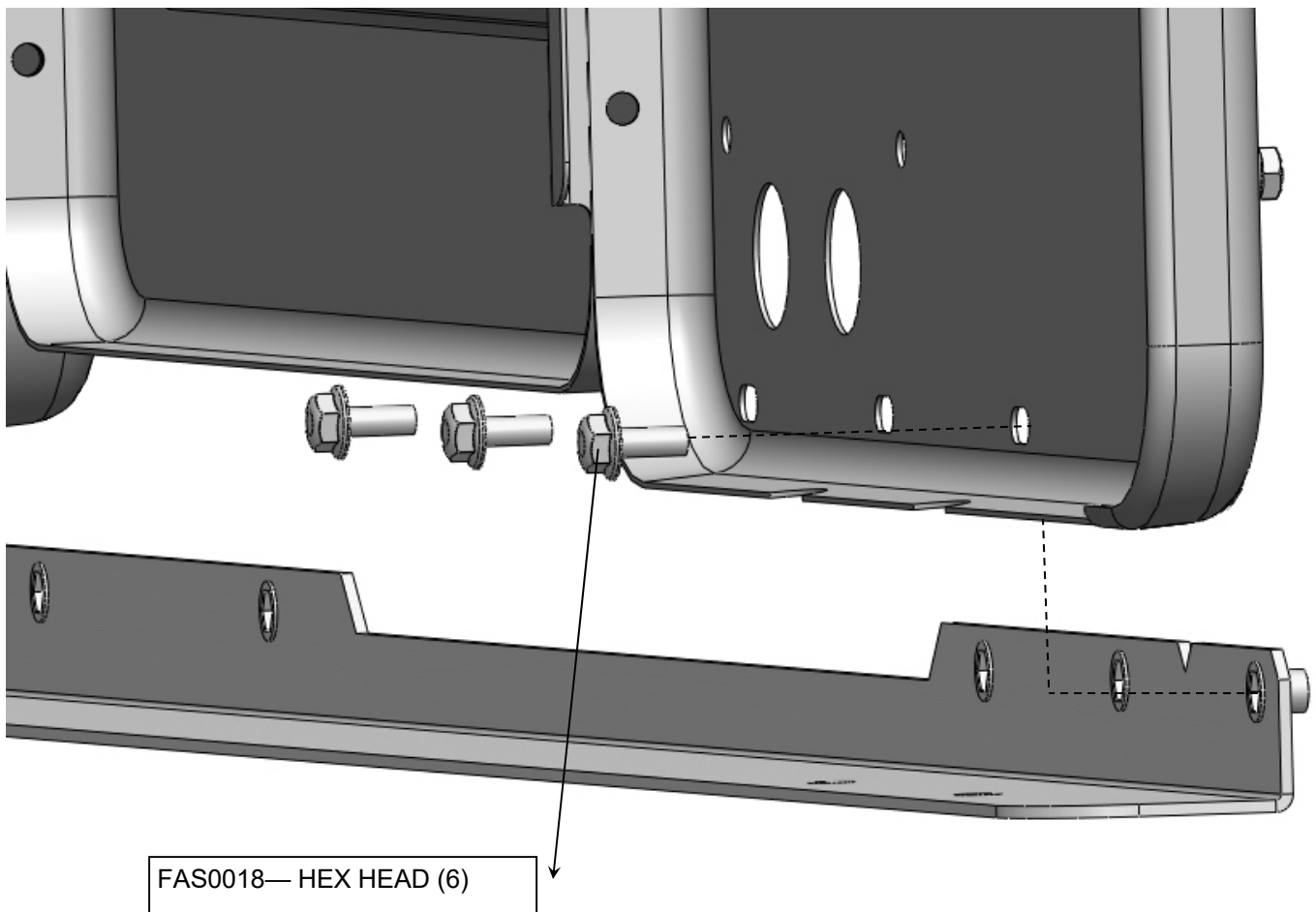
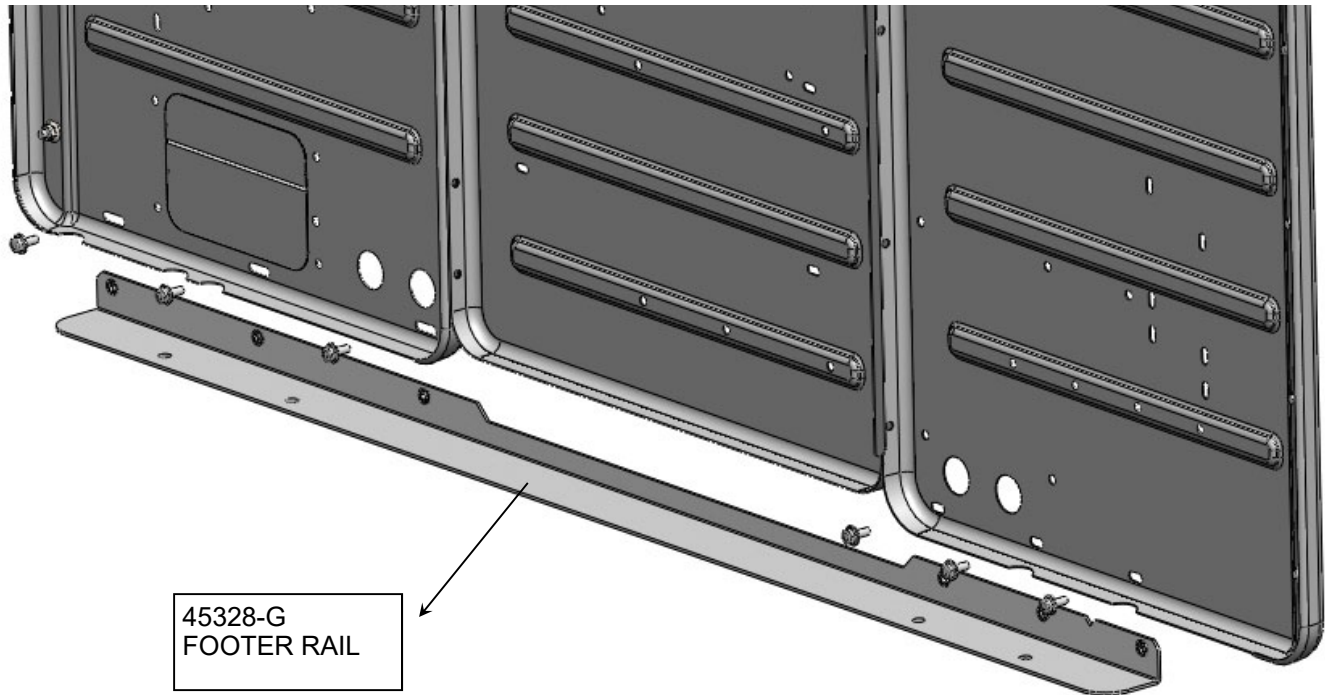
ITEM NO.	PART NUMBER	DESCRIPTION	QTY.
1	03927-1	Floor Spacer Short	4
2	FAS0086	WASHER,FLAT USS 5/16 ZP	4
3	FAS0098	Washer, Lock, Split, 5/16, Zinc Plate	4
4	FAS0018	SCREW,HH SFLNG 1/4-20X.62 ZP	43
5	FAS0055	NUT,HEX NLK FLG 1/4-20 ZP	37
6	FAS0091	Plusnut, 5/16	4
7	FAS0095	Screw, Hex Hd, 5/16-18x2.00 , Grade 8	4
8	FAS0187	SCR,HH,M6-1.0X22	2
9	FAS0067	WASHER,FLAT USS 1/4 ZP	4
10	FAS0060	WASHER,LCK SPLIT 1/4 ZP	2
11	36096-0	GROMMET,RUBBER,7/8 ID	4
12	BAG0509-A	6"X10" 4MIL AUTOBAG	1
13	FAS0089	SCREW, SHLDR .312 X .37 NYLK	2



STEP 1 ASSEMBLE S-M-C PANELS



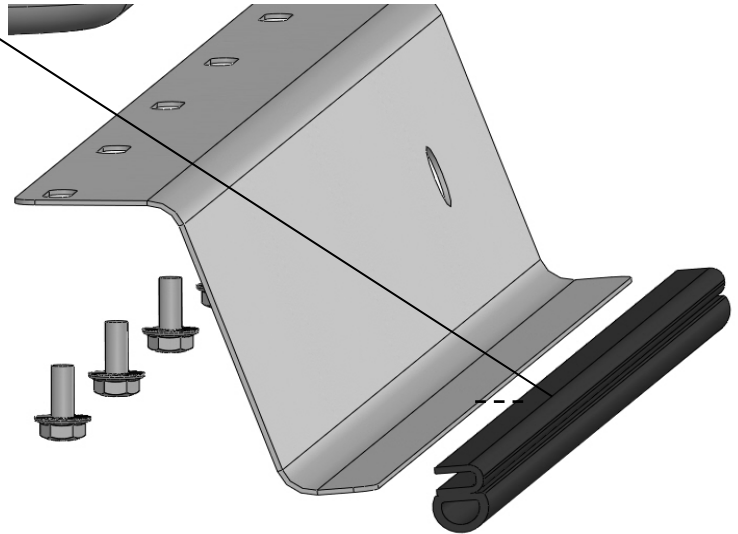
STEP 2 INSTALL FLOOR RAIL—DO NOT FULLY TIGHTEN AT THIS STEP



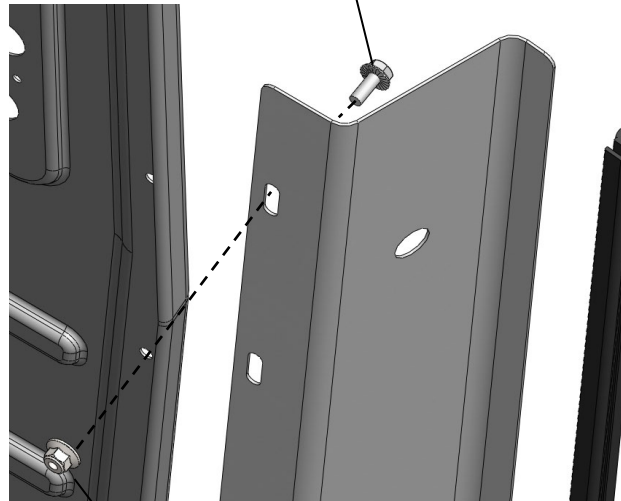
DO NOT FULLY TIGHTEN AT THIS STEP

STEP 3 - INSTALL CURB WING WITH EDGE TRIM—DO NOT FULLY TIGHTEN AT THIS STEP

45849—RUBBER STRIP X 25.75" LG.
SIDE IN PLACE TO THE APPROXIMATE
MIDDLE OF THE WING

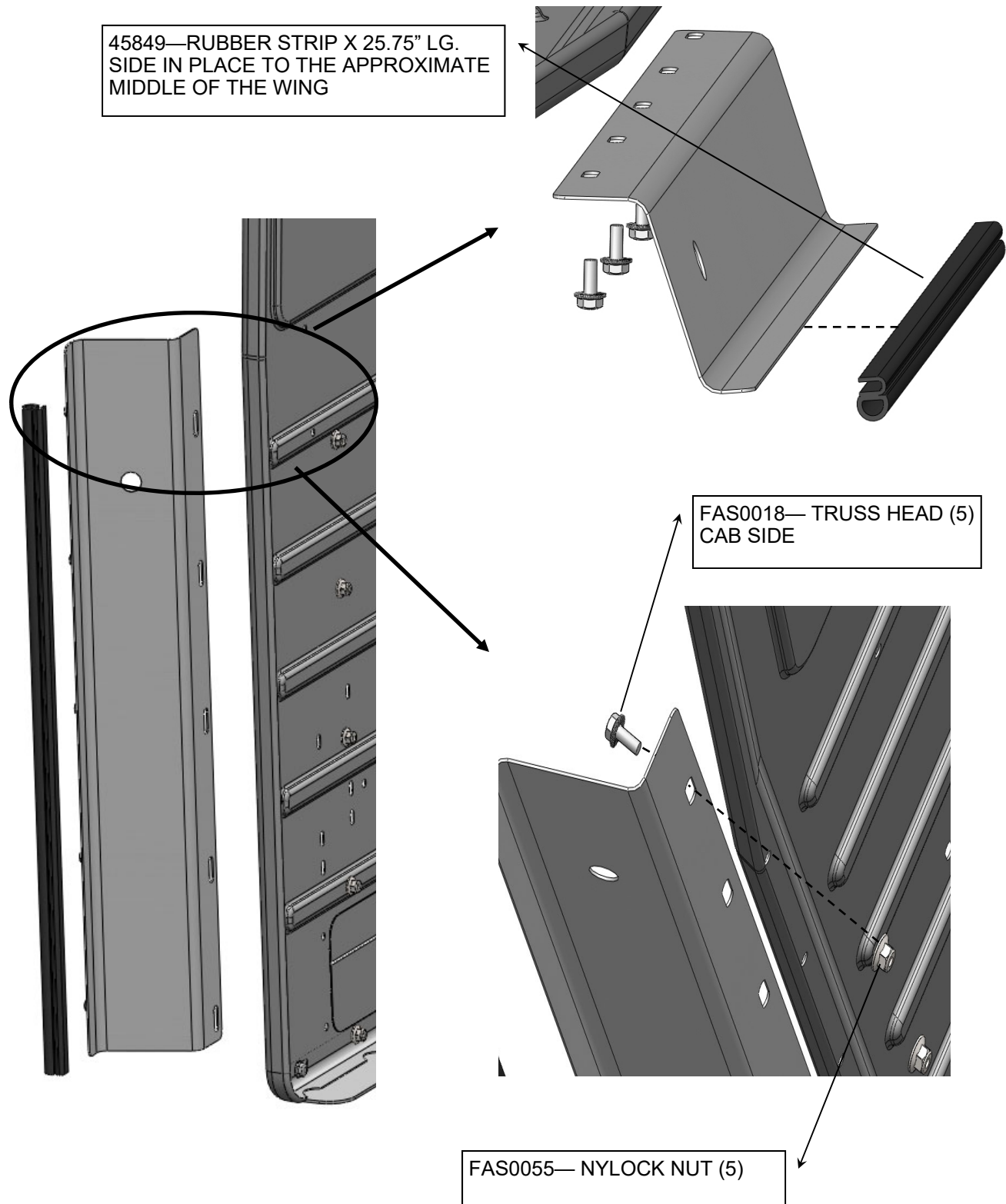


FAS0018— TRUSS HEAD (5)
CAB SIDE

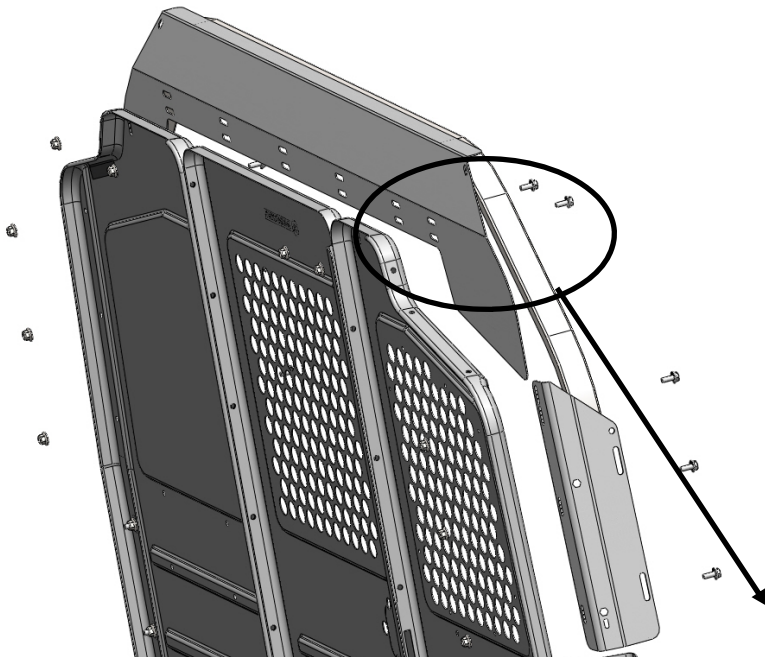


FAS0055— NYLOCK NUT (5)

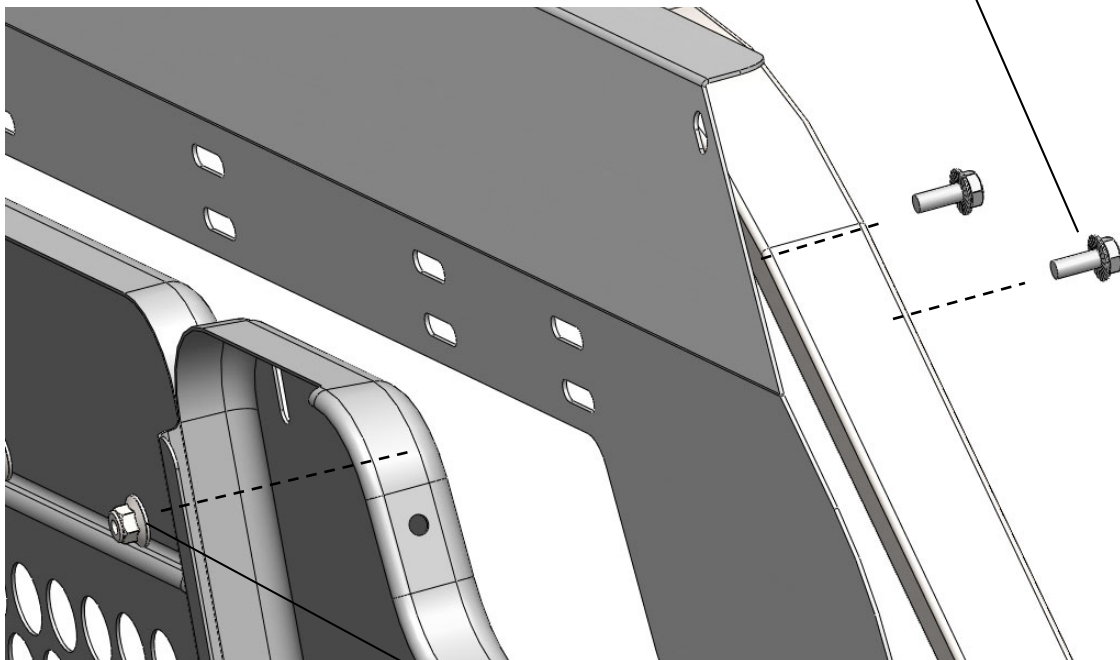
STEP 4 - INSTALL STREET WING WITH EDGE TRIM—DO NOT FULLY TIGHTEN AT THIS STEP



STEP 5 - INSTALL HEADER PANEL HOOP

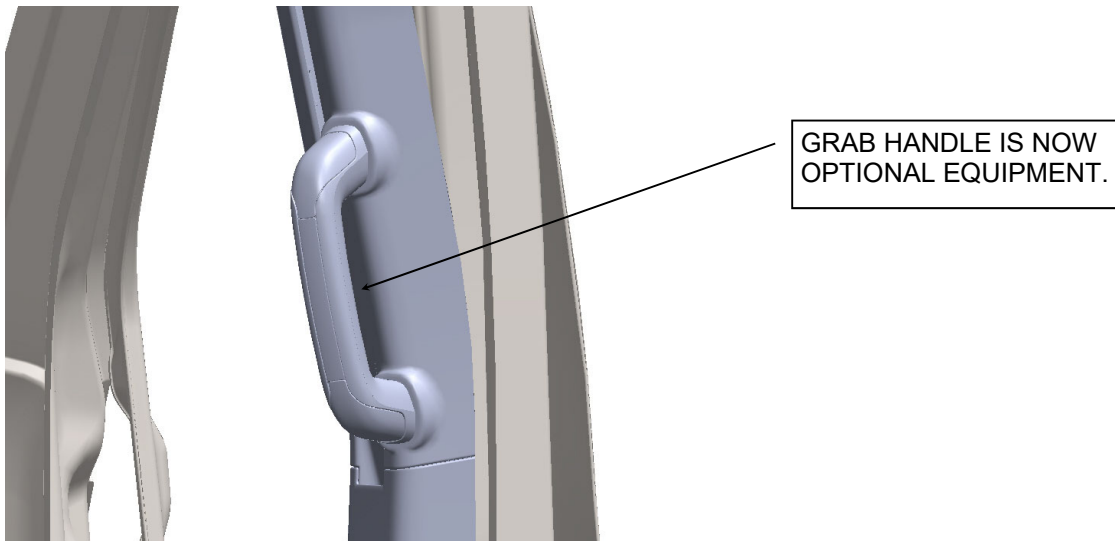


FAS0018— TRUSS HEAD (10)

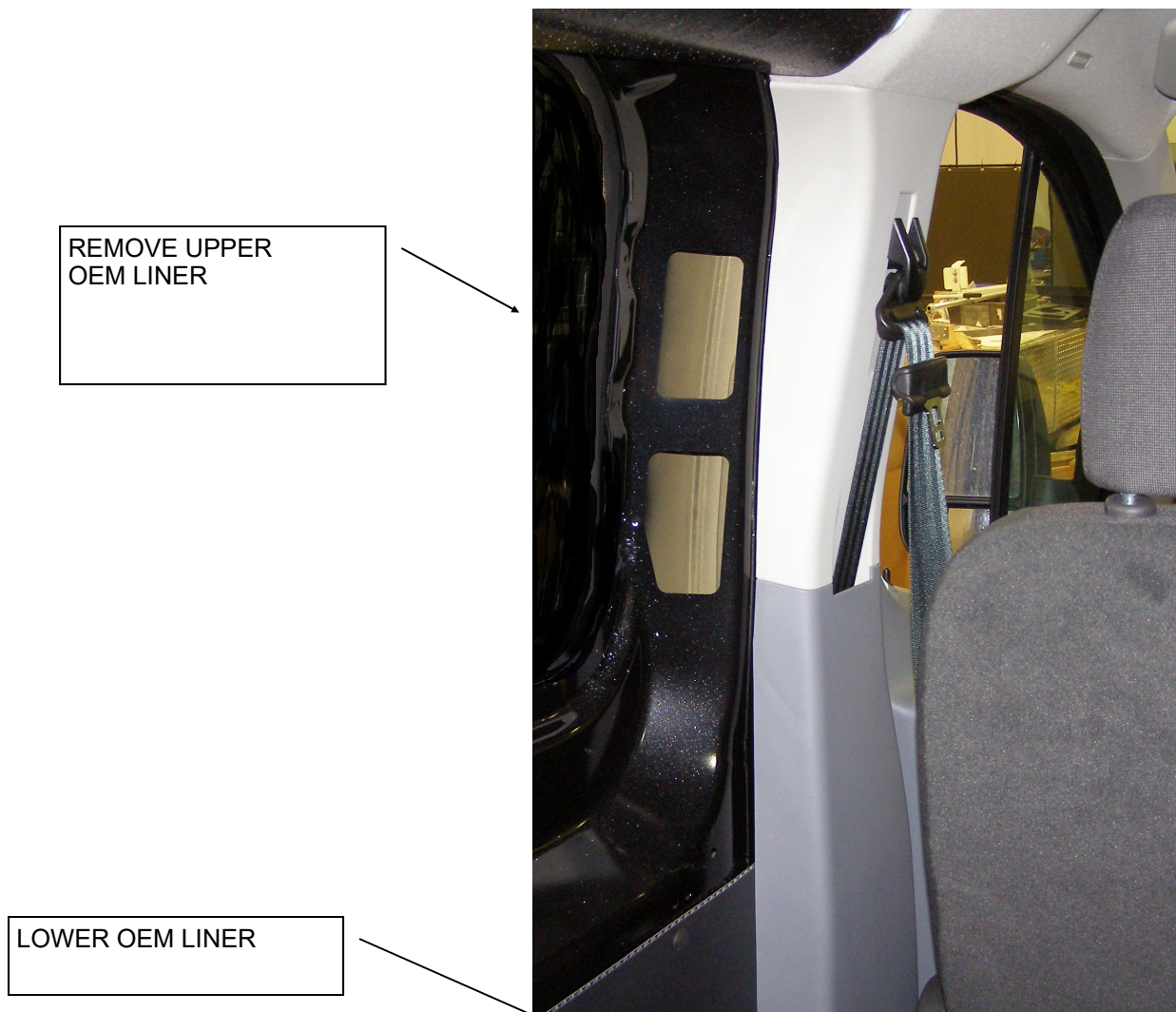


FAS0055— NYLOCK NUT(10)

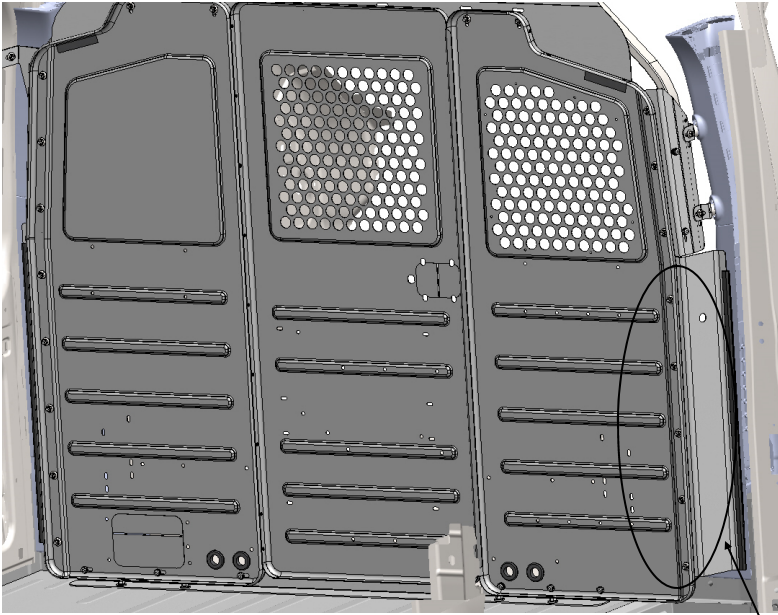
STEP 6 - REMOVE GRAB HANDLE FROM VEHICLE TO BE RELOCATED LATER



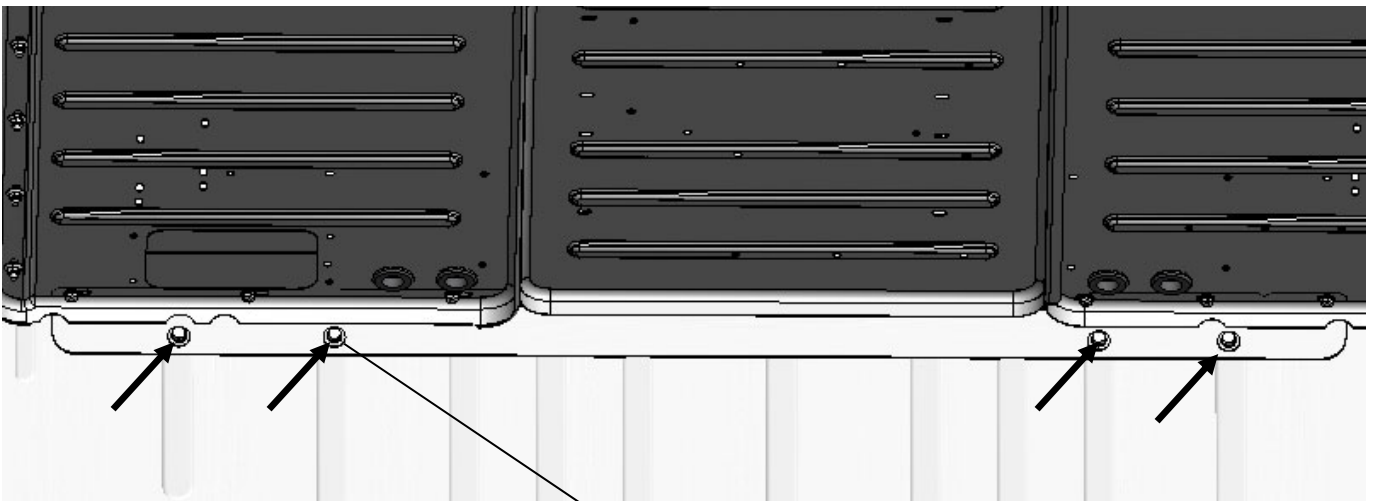
STEP 6A - IF YOU HAVE OEM LINER KIT, REMOVE SS UPPER PANEL



STEP 7A - CAREFULLY PLACE IN VEHICLE, TRANSFER MTG HOLES IN FLOOR



CENTER THE PARTITION IN THE VEHICLE
AND BUTT THE RUBBER COVERED WINGS
UP TO THE B-PILLERS

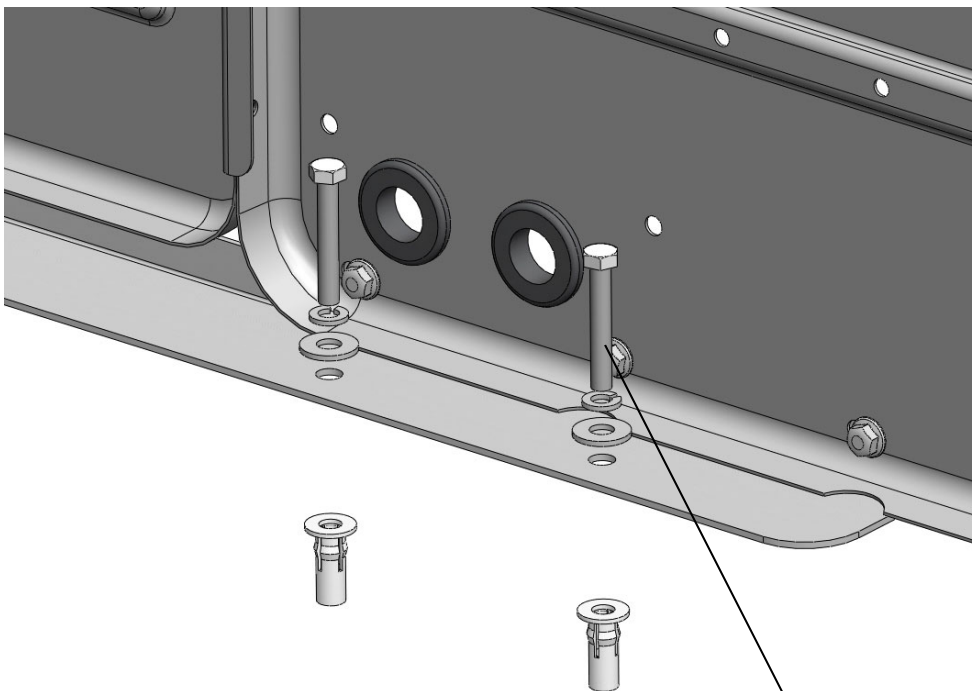


TRANSFER HOLES
OPEN HOLE UP TO 1/2" DIA
WITH DRILL STOP
ADD PLUSNUTS
FAS0091—5/16 PLUSNUT

STEP 7B - CAREFULLY PLACE IN VEHICLE BACK IN VEHICLE

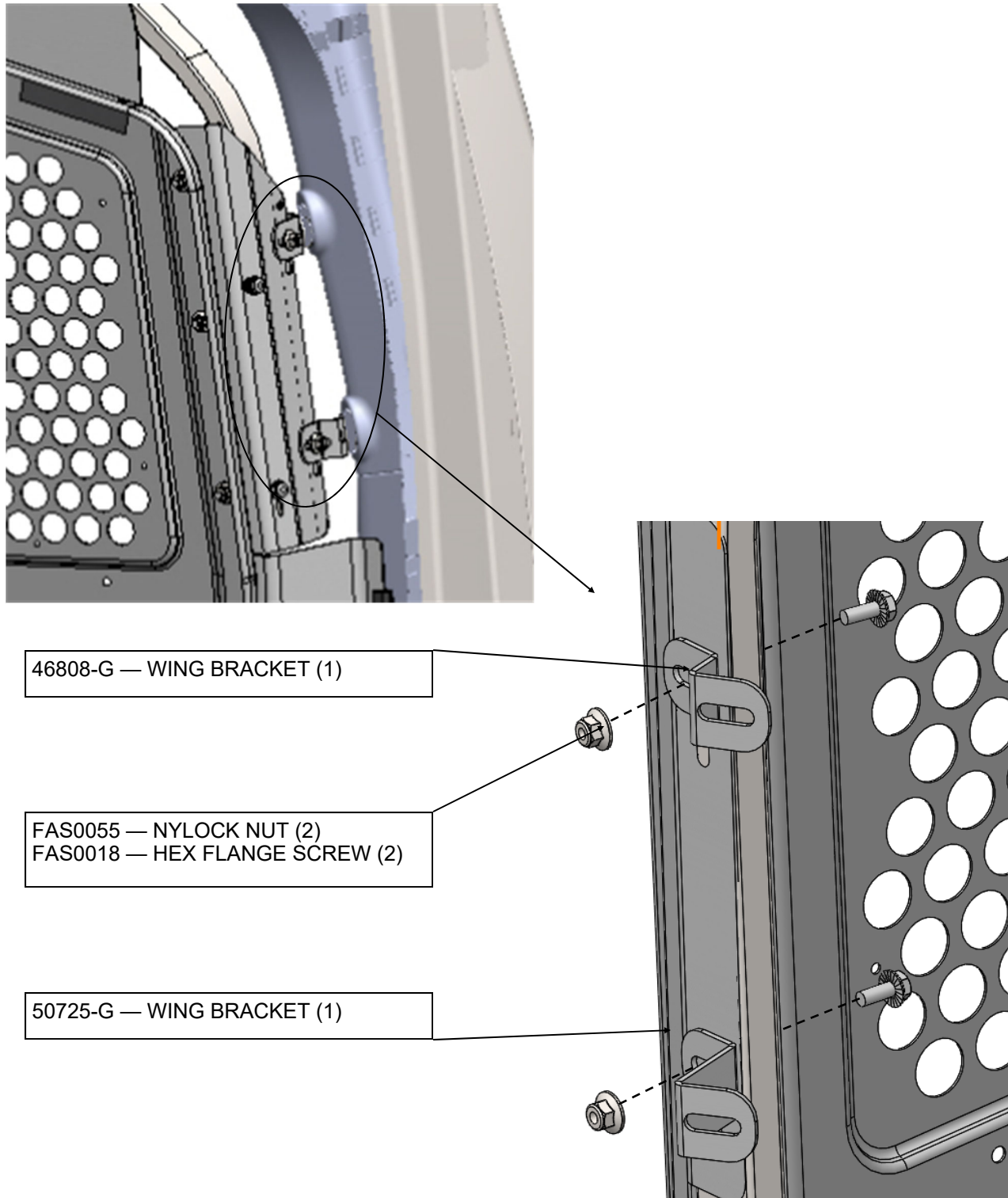


BOLT PARTITION TO THE FLOOR

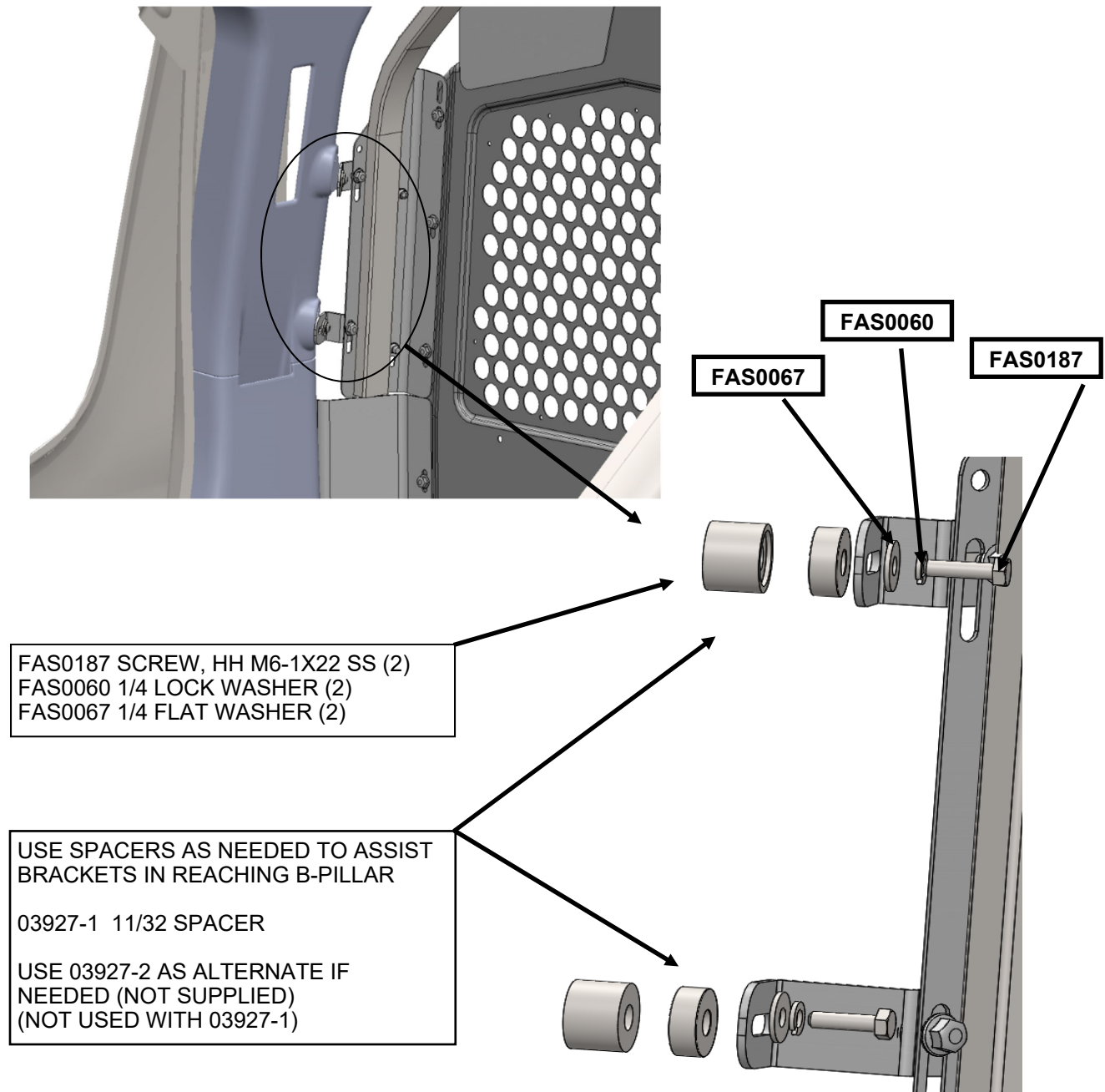


FAS0095—HHCS (4)
FAS0098—LOCK WASHER (4)
FAS0086—FLAT WASHER (4)

STEP 8A - BOLT PARTITION TO B-PILLAR ON CURB SIDE

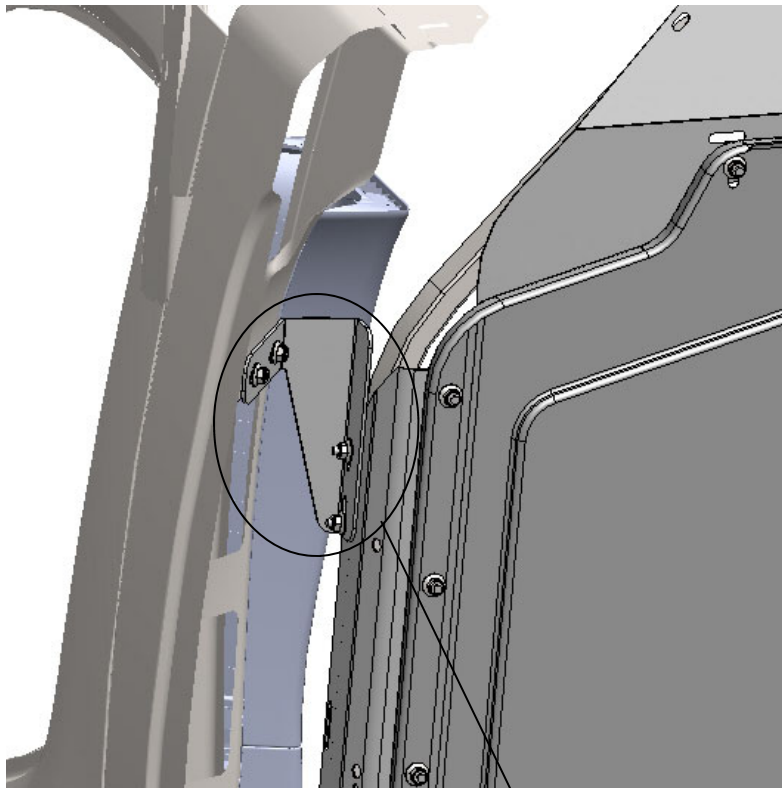


STEP 8B - BOLT PARTITION TO THE B-PILLAR ON CURB SIDE

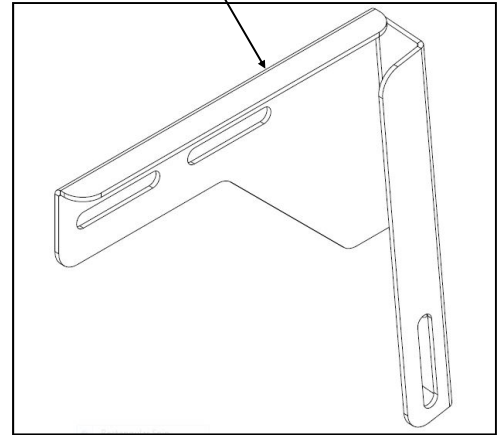


BOLTS WILL GO INTO THE HOLES WHERE THE GRAB HANDLE WAS REMOVED.

STEP 9A - BOLT ASSEMBLY TO B-PILLAR ON STREET SIDE



DO NOT USE 47380 WING BRKT IF
INSTALLING RAIL KIT.
USE 46861-G FROM RAIL KIT

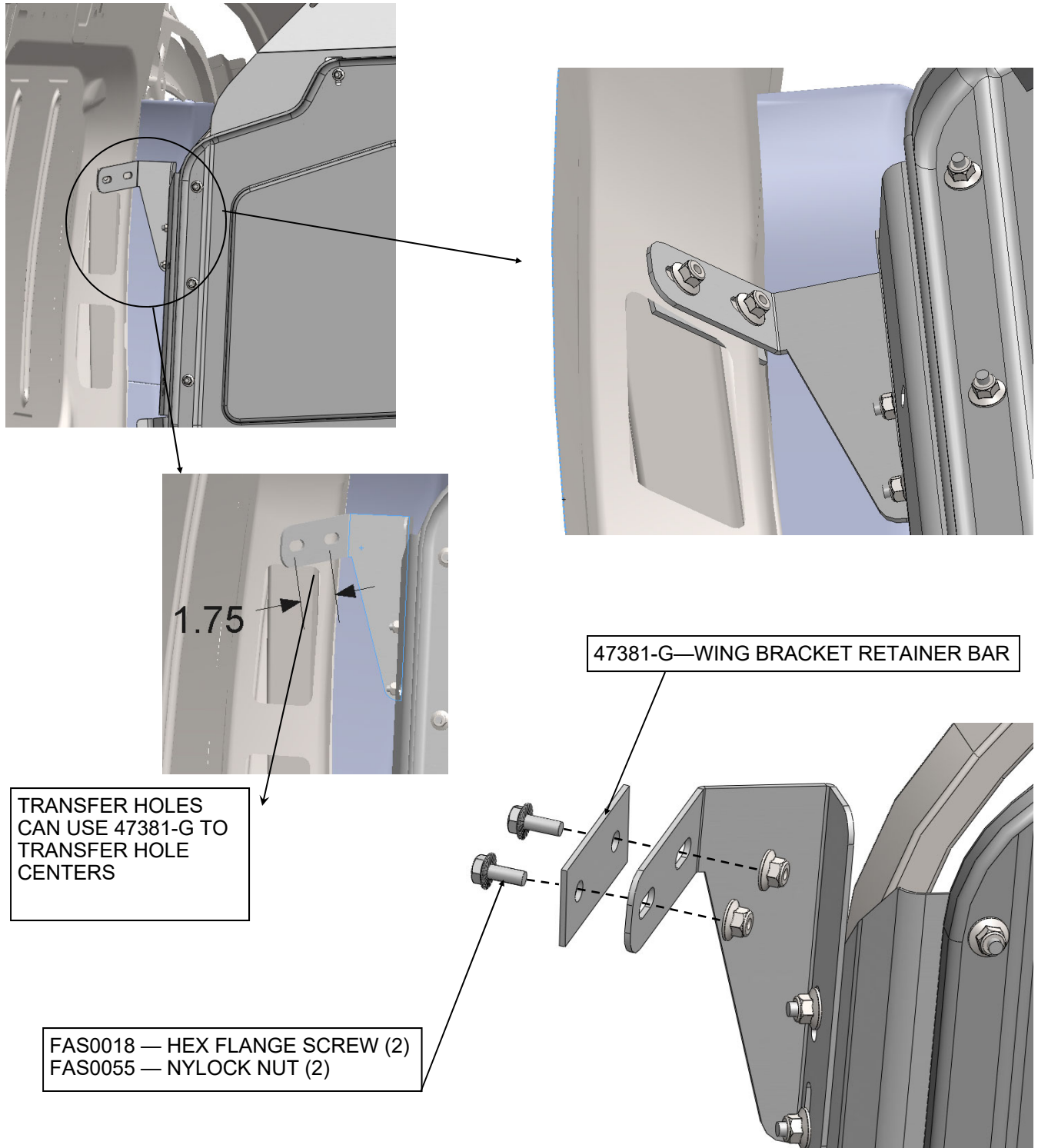


47380 — WING BRKT, SS



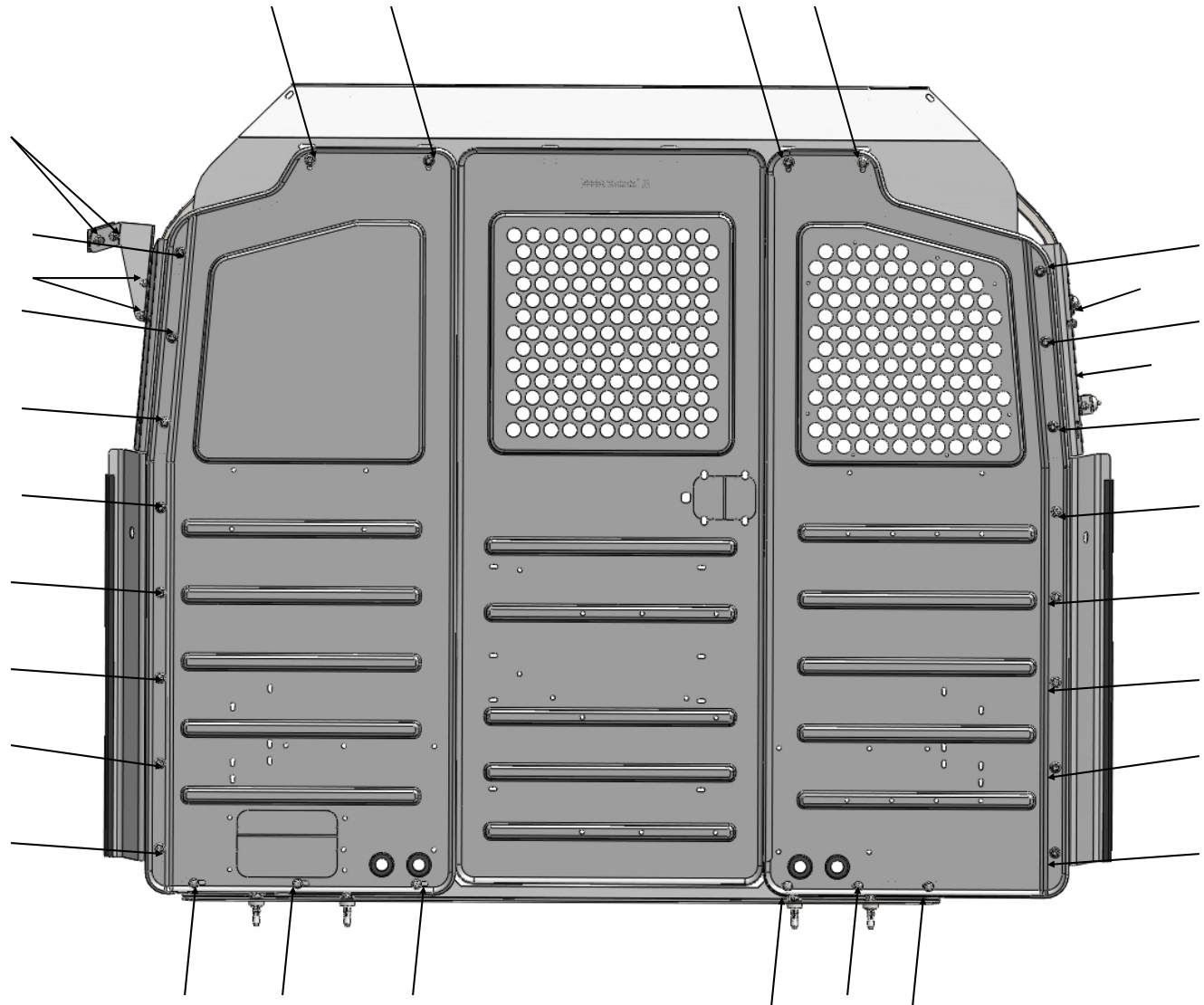
FAS0018 — HEX FLANGE SCREW (2)
FAS0055 — NYLOCK NUT (2)

STEP 9B - BOLT ASSEMBLY TO B-PILLAR ON STREET SIDE



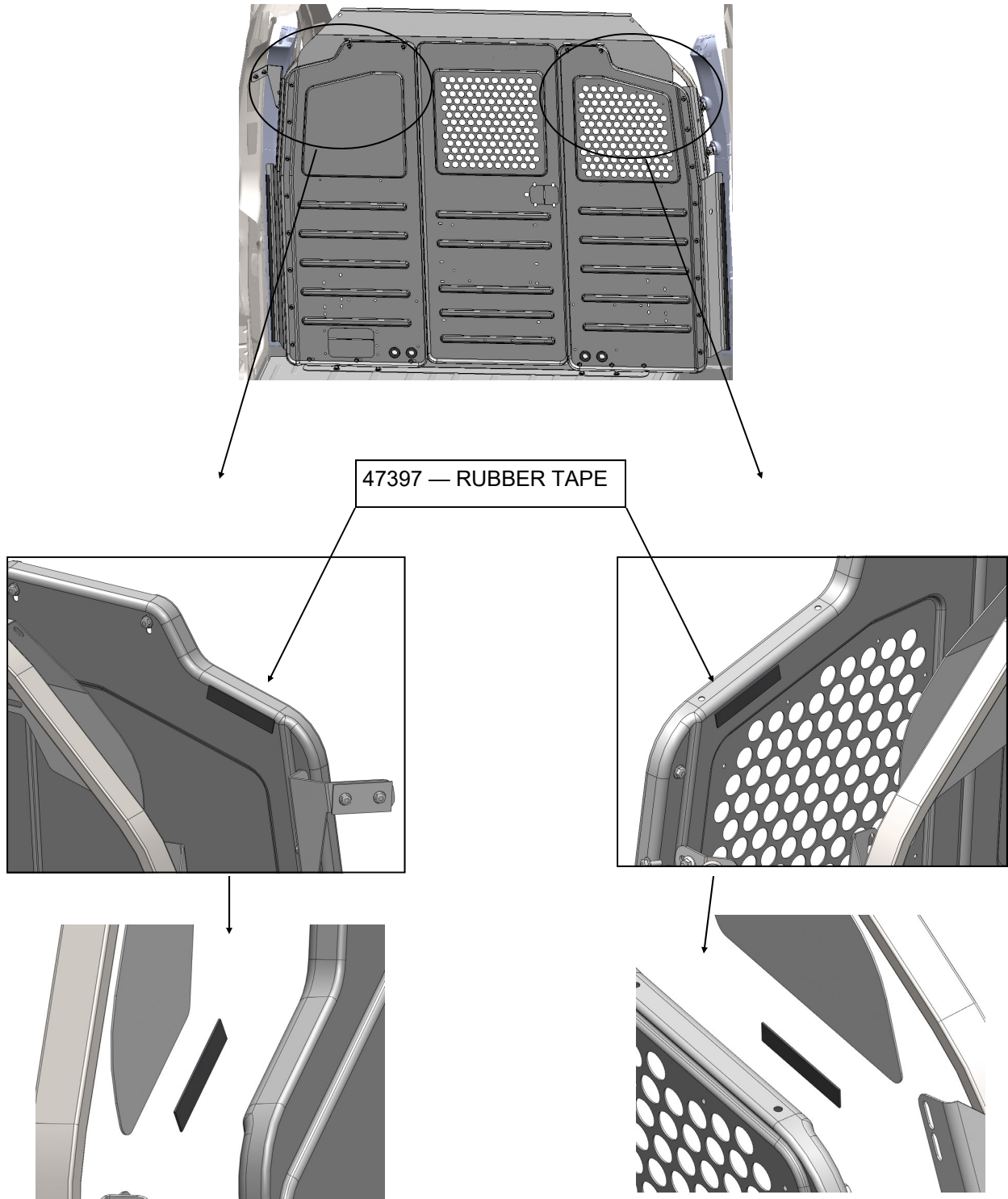
MARK HOLES AND DRILL 1/4" HOLES IN THE SS B-PILLAR. PLACE THE WING BRACKET RETAINER INSIDE THE SPACE IN THE B-PILLAR. SECURE THE RETAINER WITH THE FAS0018 SCREW AND FAS0055 NUT. THIS WILL SECURE THE PARTITION TO THE B-PILLAR.

STEP 10—TIGHTEN ALL FASTENERS FROM PREVIOUS STEPS



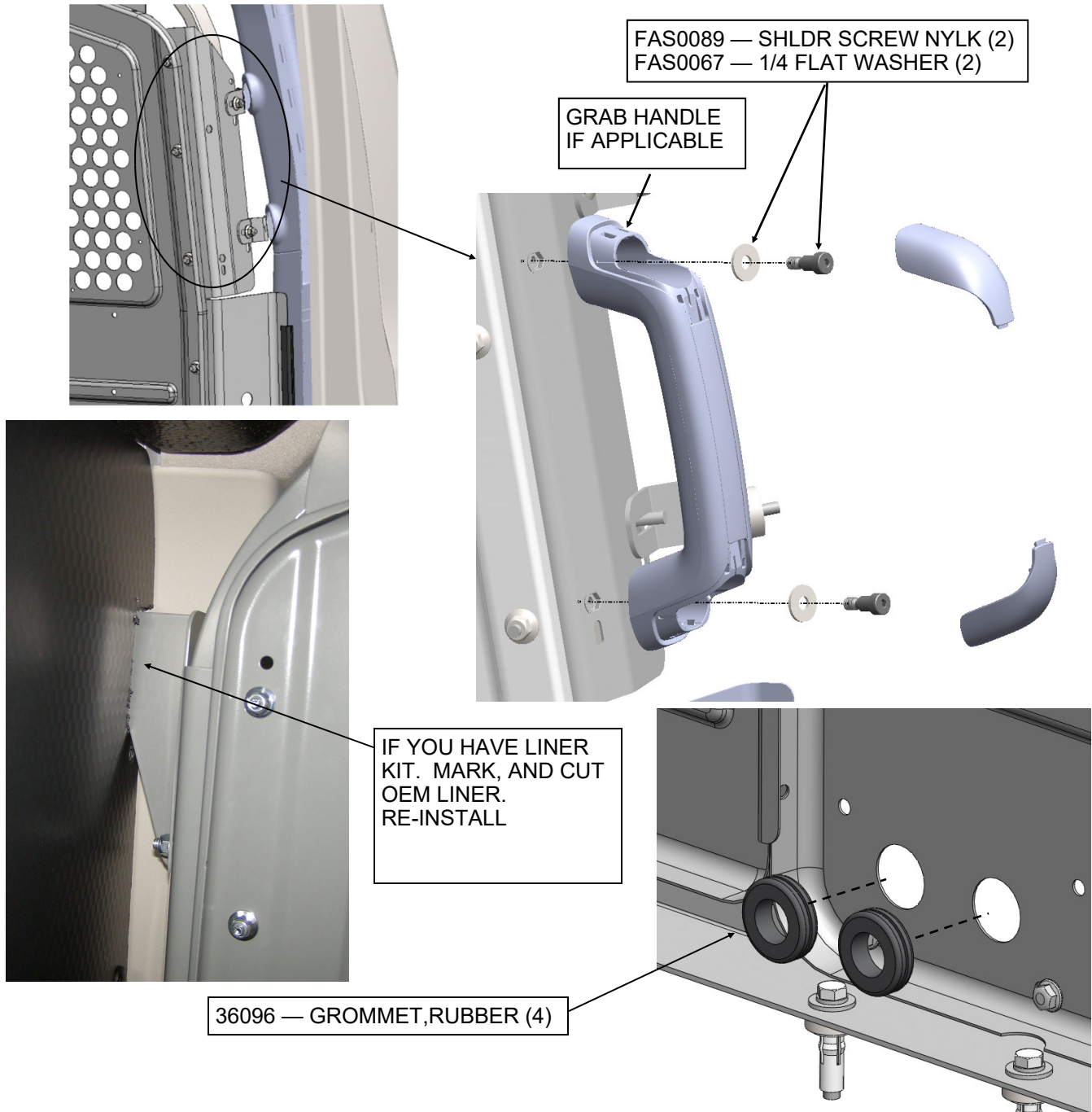
TIGHTEN ALL FASTENERS IN THE ASSEMBLY.

STEP 11 - APPLY RUBBER TAPE TO THE TOP CORNER OF PARTITION PANELS



APPLY THE RUBBER TAPE (PART 47397) TO THE UPPER SS AND CS OF THE PARTITION PANELS. GENTLY FOLD BACK THE UPPER WINGS TO PLACE THE TAPE BETWEEN THE PARTITION PANELS AND THE UPPER WING.

STEP 11- IF YOUR VEHICLE HAS THE GRAB HANDLE OPTION, ATTACH GRAB HANDLE TO WING, ADD GROMMETS.



YOUR INSTALLATION IS NOW COMPLETE

DOUBLE CHECK ALL FASTENERS LOCATIONS TO BE SURE THAT ALL FASTENERS ARE TIGHTENED TO SPECIFICATIONS.

**YOUR INSTALLATION IS NOW COMPLETE!
STOW THIS COPY IN THE VEHICLE FOR FUTURE REFERENCES!**