

Partition panels shown for illustrations purposes only. Panels are sold separately.

PRODUCT WEIGHT
33.02 LBS

WIDTH x DEPTH x HEIGHT
68.4" x 6.9" x 68.9"

CAPACITY
N/A

COLOR
GRAY

CATALOG NUMBER
WKC1FDTM

PRODUCT FEATURES

Steel partition wing kit (using appropriate panel kit) for Ford transit standard roof provides a solution for separating the cab area from the cargo area. The steel partition features the use of OEM attachment points for a clean installation.

SEE PAGE 2 FOR APPLICATION NOTES AND ACCESSORIES, OTHER PRODUCTS THAT WORK WITH THIS UNIT.

Accessory Chart

	Cargo Side	Cab Side
	Base Partition BAGRKA1 REQUIRED (1 BAGRKA1 will allow for one accessory to be added)	None available
Available Accessories	-	-
PA7: Reflector kit	x	-
PA8: Fire ext.	x	-
PA9: First aid tray	x	-
PA10: Practice holder	-	-
PA11: Cab file	-	-
PA11NL: Catalog box	-	-
TA1: Four hook bar	-	-
TH30: 30lb tank holder	-	-
TH50: 50lb tank holder	-	-
UH50RM1: Rail mount kit	-	-
UH10: 1" hook	-	-
UH25: 2.5" hook	-	-
UH25CP-G: 2.5' hook comp	-	-
UH50: 5" hook	x	-

Introduction / Comments:

This Wing kit is designed to fit in your Mid Roof Ford Transit, used with the S1M2C2PM partition panel kit, which is ordered separately.

Note:

It is advised that all fasteners used in this assembly and installation should be checked for tightness at the following intervals: @ 2-weeks and again @ 6-weeks of operation. This preventive maintenance step must be completed to ensure your Partition gives you long service life.

SHOWING A COMPLETE ASSEMBLY
S1M2C2PM—PARTITION PANELS
WKC1FDTM—WING KIT



**WKC1FDTM
WING KIT, MID ROOF
FORD TRANSIT**

- PRECAUTIONS -





 **CAUTION** 
**THE USE OF AIR IMPACT TOOLS CAN
OVER-TORQUE FASTENERS AND
CAUSE FASTENER FAILURE!**





 **CAUTION** 
**ALL INSTALLATION HOLES SHOULD BE SEALED
WITH SILICON OR BUTYL SEALANT TO PREVENT
EXHAUST FUMES FROM ENTERING THE VEHICLE!**



 **DANGER** 
**INSPECT FOR FUEL TANK, FUEL LINES, BRAKE LINES, HIGH
VOLTAGE BATTERIES AND ELECTRICAL LINES PRIOR TO
DRILLING TO AVOID DAMAGING CRITICAL VEHICLE SYSTEMS
OR INJURY TO INSTALLER DURING INSTALLATION PROCESS!**



 **CAUTION** 
**TO AVOID DAMAGING THE VEHICLE ALWAYS USE DRILL
STOPS WHEN DRILLING ANY INSTALLATION HOLES!
ADRIAN AVAILABLE PART #'S 31121-0 (1/2" DEEP),
31122-0 (3/4" DEEP)**



- IMPORTANT WARRANTY REQUIREMENTS -

1. SUBSTITUTING ADRIAN STEEL SPECIFIED FASTENERS FOR ASSEMBLY AND/OR INSTALLATION WILL VOID YOUR PRODUCT WARRANTY.
2. ALL HOLES DRILLED INTO VEHICLE SHOULD HAVE THE RAW METAL EDGES SEALED WITH A SELF-ETCHING PRIMER TO RESIST CORROSION AND POTENTIAL FASTENER POINT FAILURE.
3. ALL FASTENERS USED IN THE INSTALLATION OF THIS PRODUCT SHOULD BE TIGHTENED TO THE TORQUE(S) SPECIFIED IN THESE INSTRUCTIONS.
4. THESE INSTRUCTIONS SHOULD BE KEPT WITH THE VEHICLE.

THE BASIC TOOLS NEEDED FOR MOST INSTALLATIONS



DRILL



DRILL BIT WITH
STOP



RATCHET, SOCKETS
AND/OR WRENCHES



SCREWDRIVERS



MEASURING TAPE

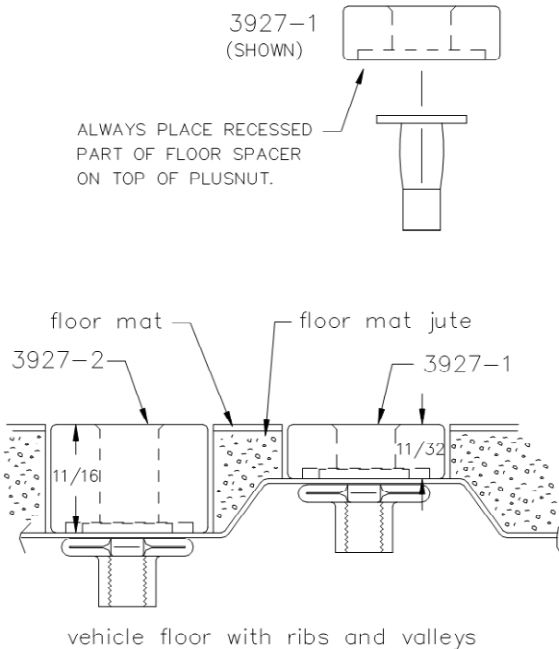
ADDITIONAL TOOLS MAY BE NEEDED FOR THIS INSTALLATION AND THEY WILL BE IDENTIFIED IN THE STEPS THAT FOLLOW.

If your vehicle contains carpet or a rubber floor mat you will need to prepare the mounting location. Position the product to be installed into the vehicle and once you are satisfied with the mounting locations, mark the mounting locations. Using a 1-3/16" diameter carpet cutter (P/N: 31183-0). Select the appropriate floor spacers as shown in the illustration. Set those aside for use later into the installation process.

Using the correct drill bit size for the selected plusnut, drill the mounting holes in the vehicle sheet metal to prepare for installing the plusnuts.

If you are thru-bolting at any of the locations simply drill a hole that is 1/16" larger than the bolt size(s) for those locations.

Once you have drilled the holes into the vehicle, the raw metal edges should be sealed using a self-etching primer to resist corrosion and potential fastener point failure.



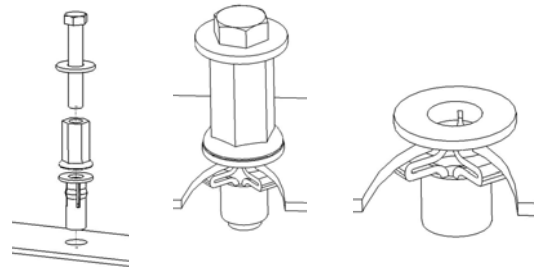
A PLUSNUT (RIVNUT) SETTING TOOL IS REQUIRED FOR PLUSNUT (RIVNUT) INSTALLATION AND IS NOT SUPPLIED WITH THIS KIT. OR USE AN AIR POWERED PLUSNUT SETTING GUN.

1/4-20UNC Plusnut (FAS0052) Use 3/8" dia. drill w/stop

FAS0080 SCREW, HXHD, 1/4-20UNCx2.00", G8
FAS0067 WASHER, FLAT, 1/4"ID
22200-0 PLUSNUT TOOL

5/16-18UNC Plusnut (FAS0091) Use 1/2" dia. drill w/stop

FAS0095 SCREW, HXHD, 5/16-18UNCx2.00", G8
FAS0086 WASHER, FLAT, 5/16"ID
22200-0 PLUSNUT TOOL

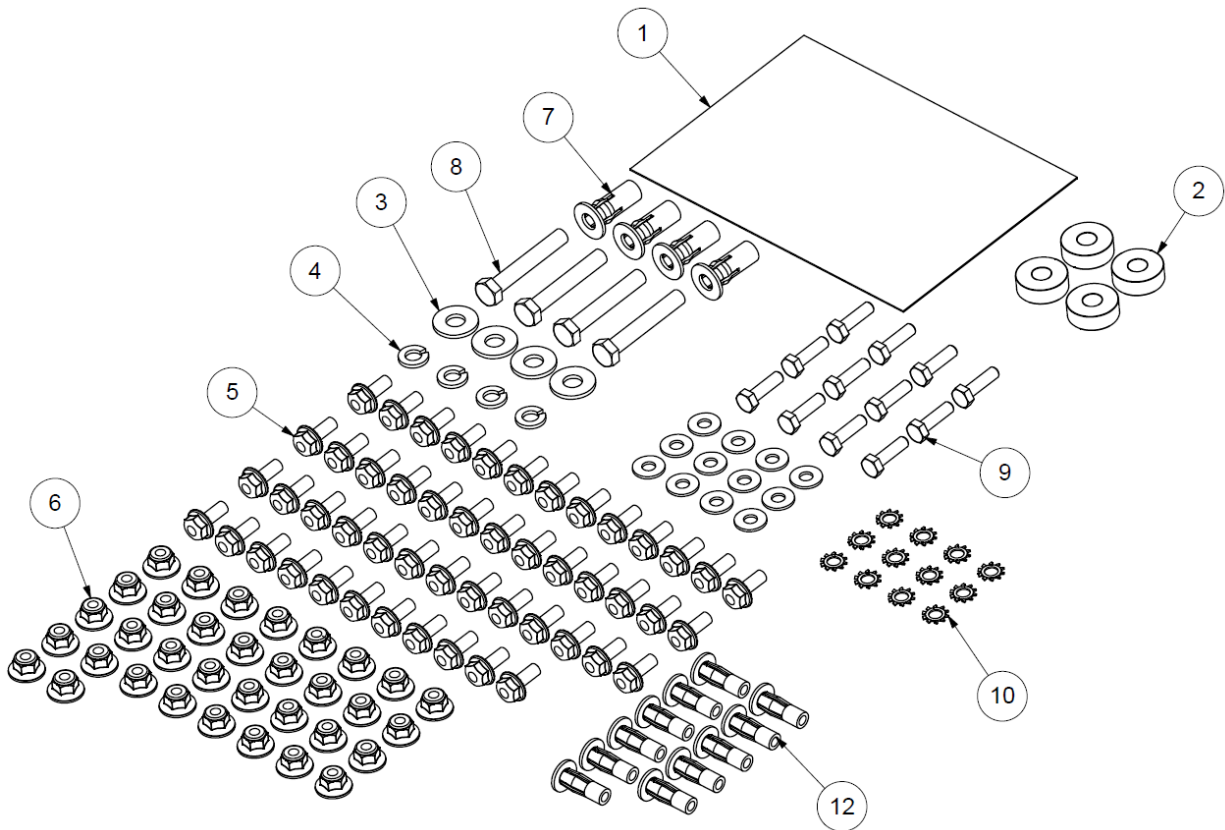


Place barrel of the plusnut body in sheet metal thru hole until flange is flush with sheet metal.

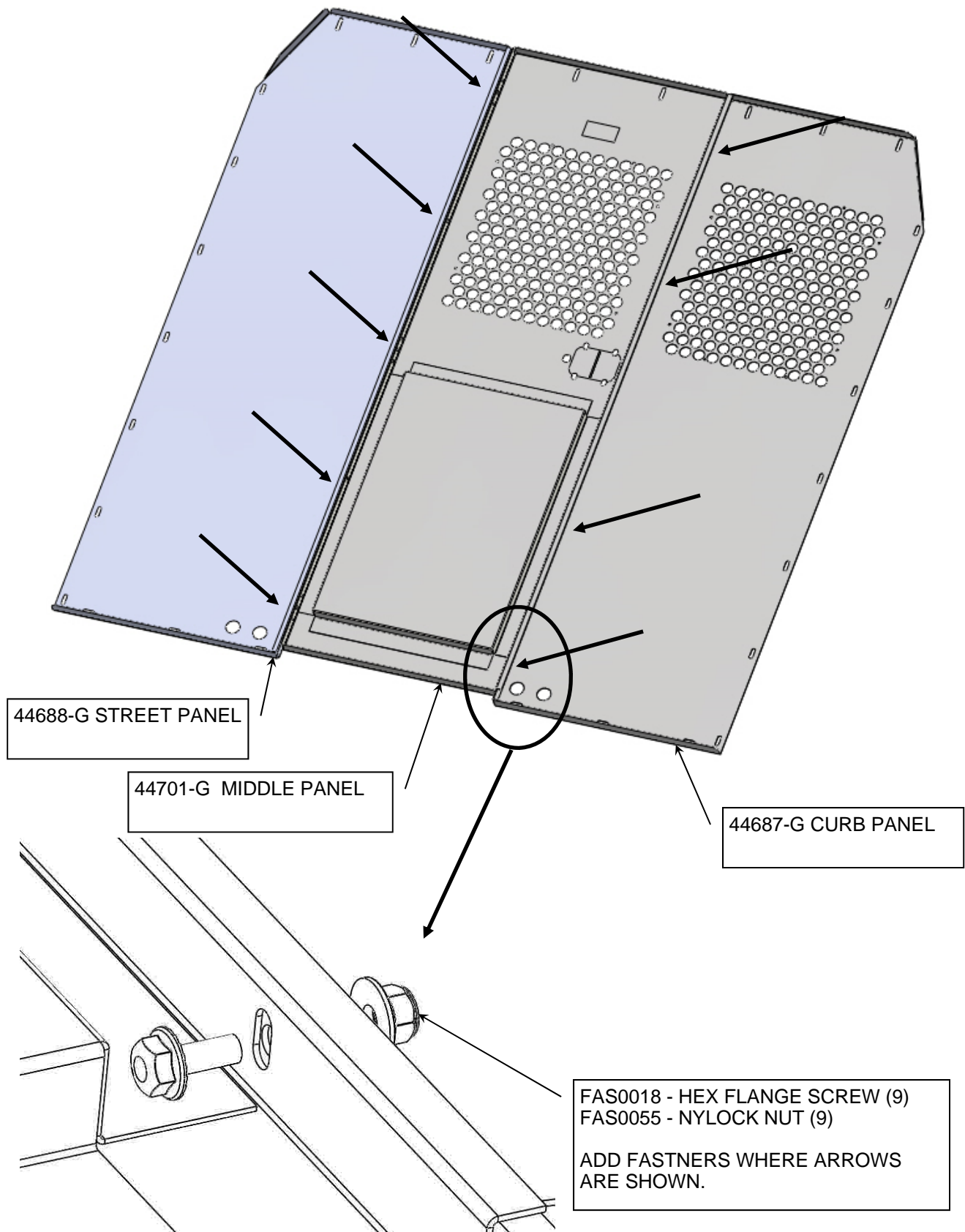
Using a 9/16" combination wrench of plusnut tool body and a second hand wrench, ratchet, or air tool, rotate the hex bolt head CW to draw plus nut flanges up (set the plusnut).

Assembly and Installation Fastener Identification Sheet (BAG47739)

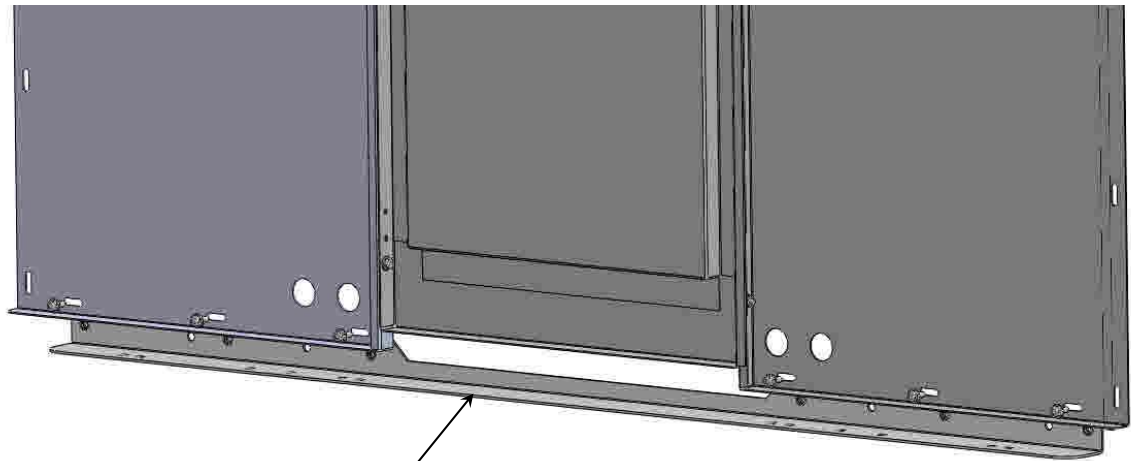
ITEM NO.	PART NUMBER	DESCRIPTION	QTY.
1	BAG0507-A	5" x 7" 3MIL AUTOBAG	1
2	03927-1	Floor Spacer Short	4
3	FAS0086	WASHER,FLAT USS 5/16 ZP	4
4	FAS0098	Washer, Lock, Split, 5/16, Zinc Plate	4
5	FAS0018	SCREW,HH SFLNG 1/4-20X.62 ZP	50
6	FAS0055	NUT,HEX NLK FLG 1/4-20 ZP	34
7	FAS0091	Plusnut, 5/16	4
8	FAS0095	Screw, Hex Hd, 5/16-18x2.00 , Grade 8	4
9	FAS0187	SCR,HH,M6-1.0X22	12
10	FAS 0066	Washer, Lock, Ext. Tooth, 1/4	12
11	FAS0234	Washer, Flat, 1/4, SST	12
12	FAS0052	PLUSNUT, 1/4-20 PB DC	11



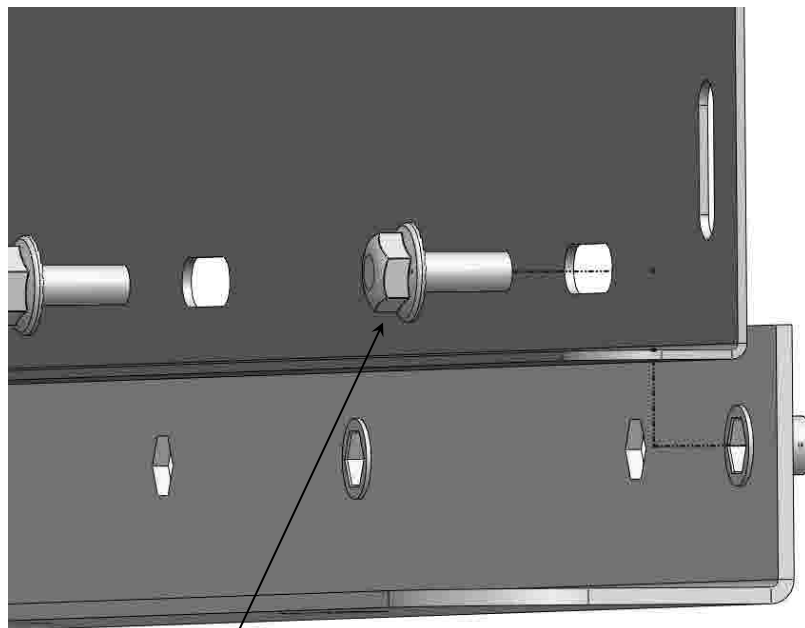
STEP 1 ASSEMBLE S-M-C PANELS



STEP 2 INSTALL FLOOR RAIL—DO NOT FULLY TIGHTEN AT THIS STEP

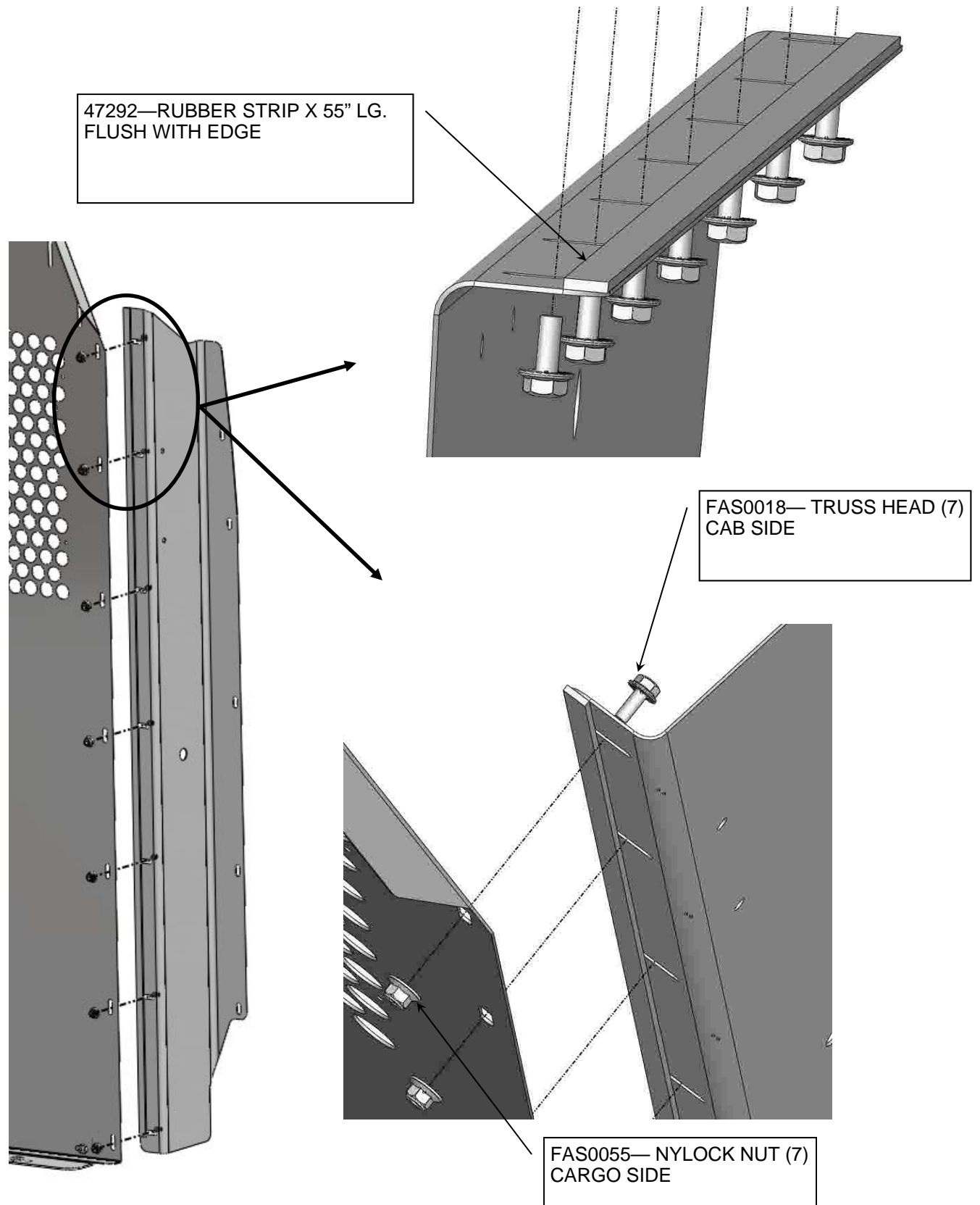


44674-G
FOOTER RAIL



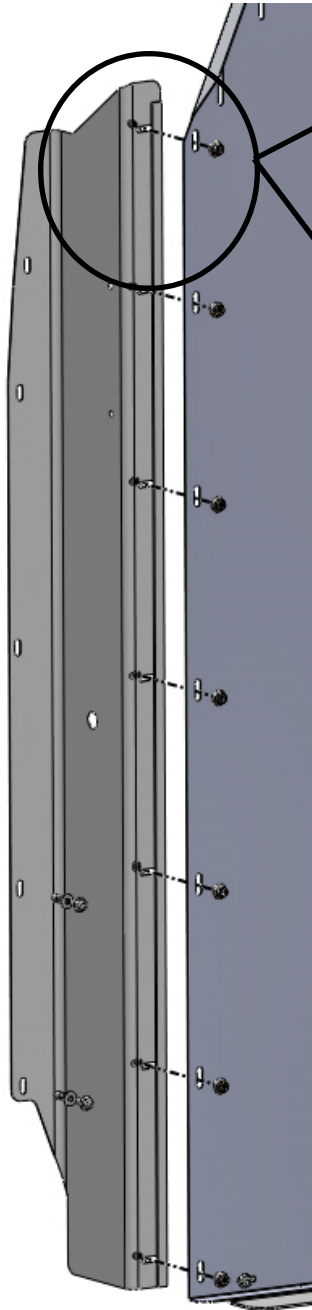
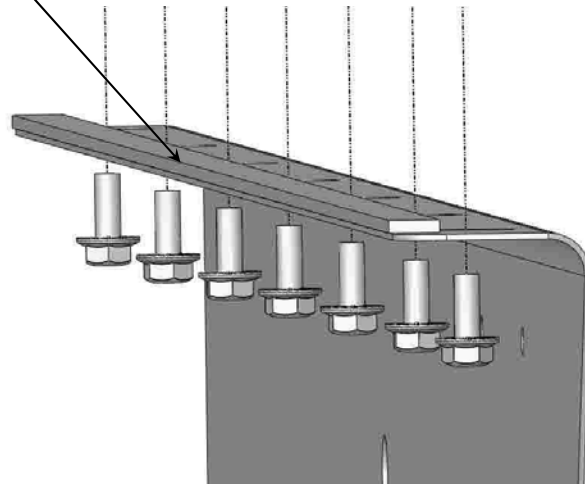
FAS0018— HEX HEAD (6)

STEP 3 - INSTALL CURB WING WITH RUBBER STRIP—DO NOT FULLY TIGHTEN AT THIS STEP

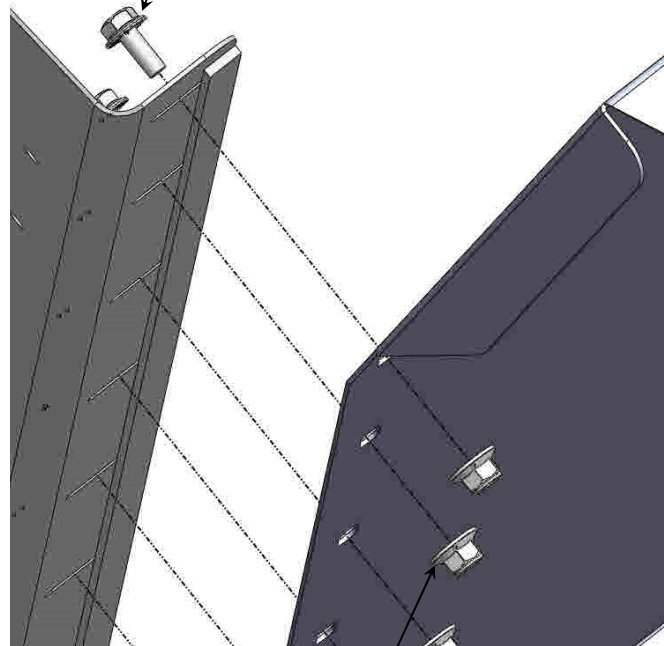


STEP 4 - INSTALL STREET WING WITH RUBBER STRIP—DO NOT FULLY TIGHTEN AT THIS STEP

47292—RUBBER STRIP X 55" LG.
FLUSH WITH EDGE

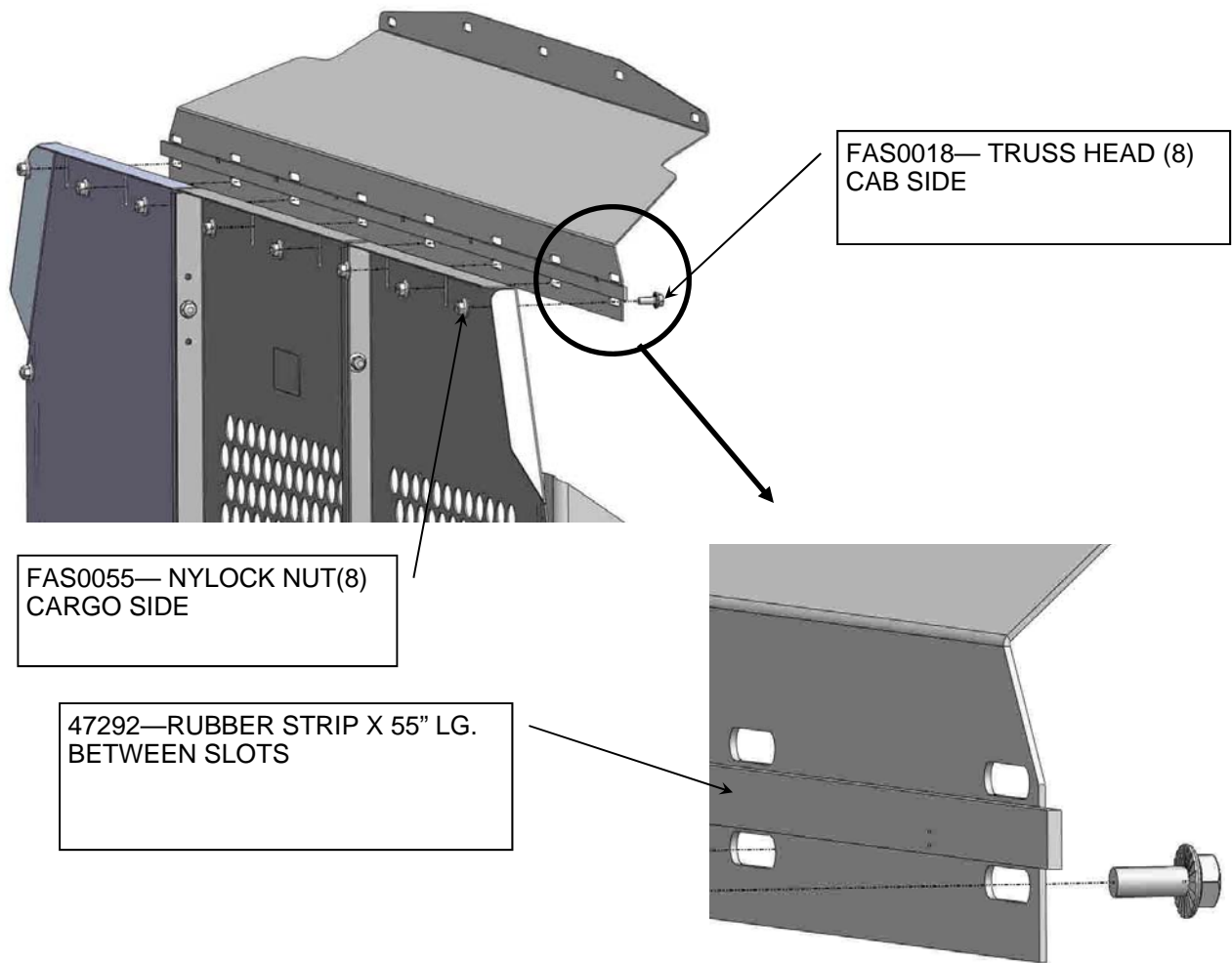


FAS0018— TRUSS HEAD (7)
CAB SIDE



FAS0055— NYLOCK NUT (7)
CARGO SIDE

STEP 5 - INSTALL HEADER PANEL WITH RUBBER STRIP



STEP 6 - REMOVE GRAB HANDLE FROM VEHICLE TO BE RELOCATED LATER

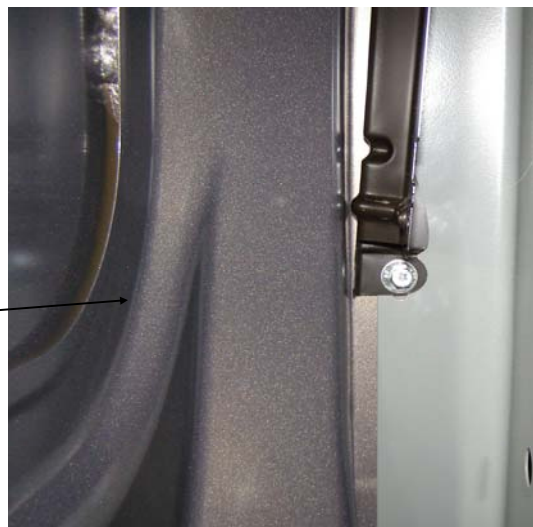
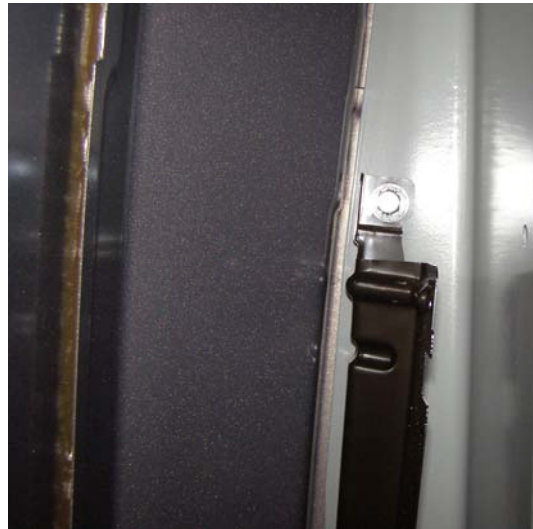


STEP 6B - REMOVE SS LINER AND BRACKET FOR PARTITION INSTALATION



REMOVE ALL REUSABLE PUSH PINS, EXCEPT THESES THREE SHOWN, FROM SS LINER PANEL TO EXPOSE BRACKET

REMOVE BRACKET FROM SS B-PILLAR (2 BOLTS).



STEP 7A - SIDE DOOR FOOTWELL MOLDING



No side door molding
No spacers required

REFERENCE STEP 8

FAS0095—HHCS (4)

FAS0098—LOCK WASHER (4)

FAS0086—FLAT WASHER (4)

03927-1—SHORT SPACER (4)
WITH OEM WHEEL WELL

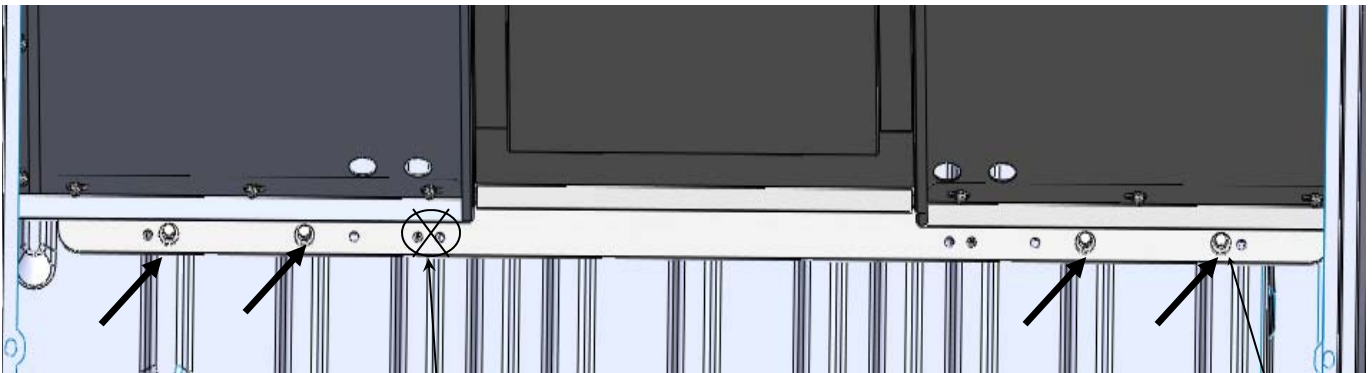
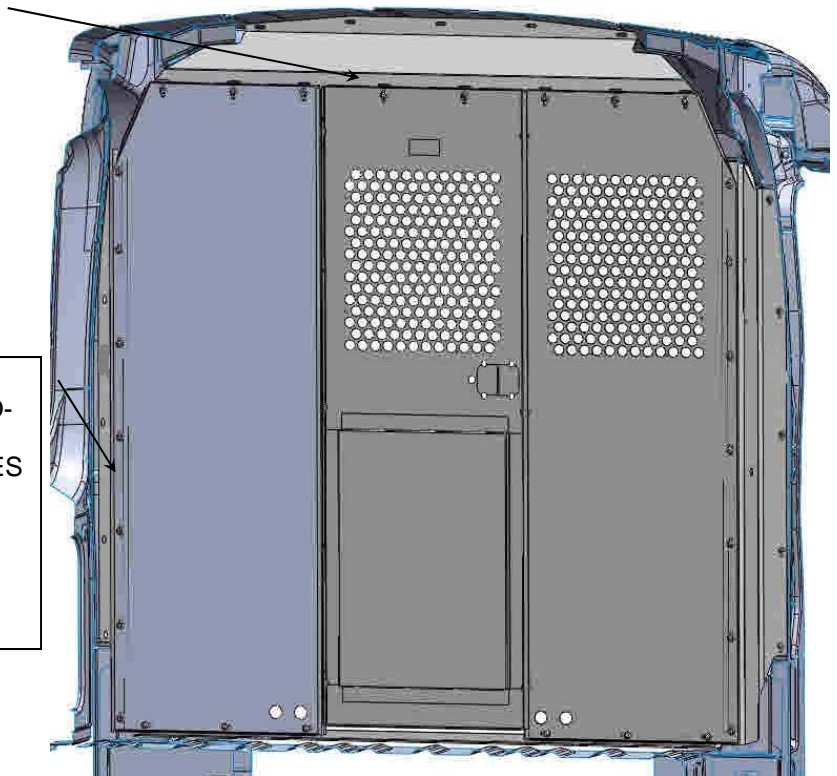
With side door molding
Cut hole thru trim with
hole saw
NEED SHORT SPACERS



STEP 7B CAREFULLY PLACE IN VEHICLE, TRANSFER MTG HOLES

TRANSFER HEADER MTG HOLES (5)
OPEN HOLE UP TO 3/8" DIA WITH
DRILL STOP.
ADD PLUSNUTS
FAS0052—1/4 PLUSNUTS (5)

CHECK STREETSIDE HOLE LOCATIONS
FOR OEM M6 THREADED INSERTS, 5 LO-
CATIONS.
IF NO THREADED INSERTS, MARK HOLES
OPEN HOLE UP TO 3/8" DIA WITH
DRILL STOP. (5) PLACES
ADD PLUSNUTS
FAS0052—1/4 PLUSNUTS (5)

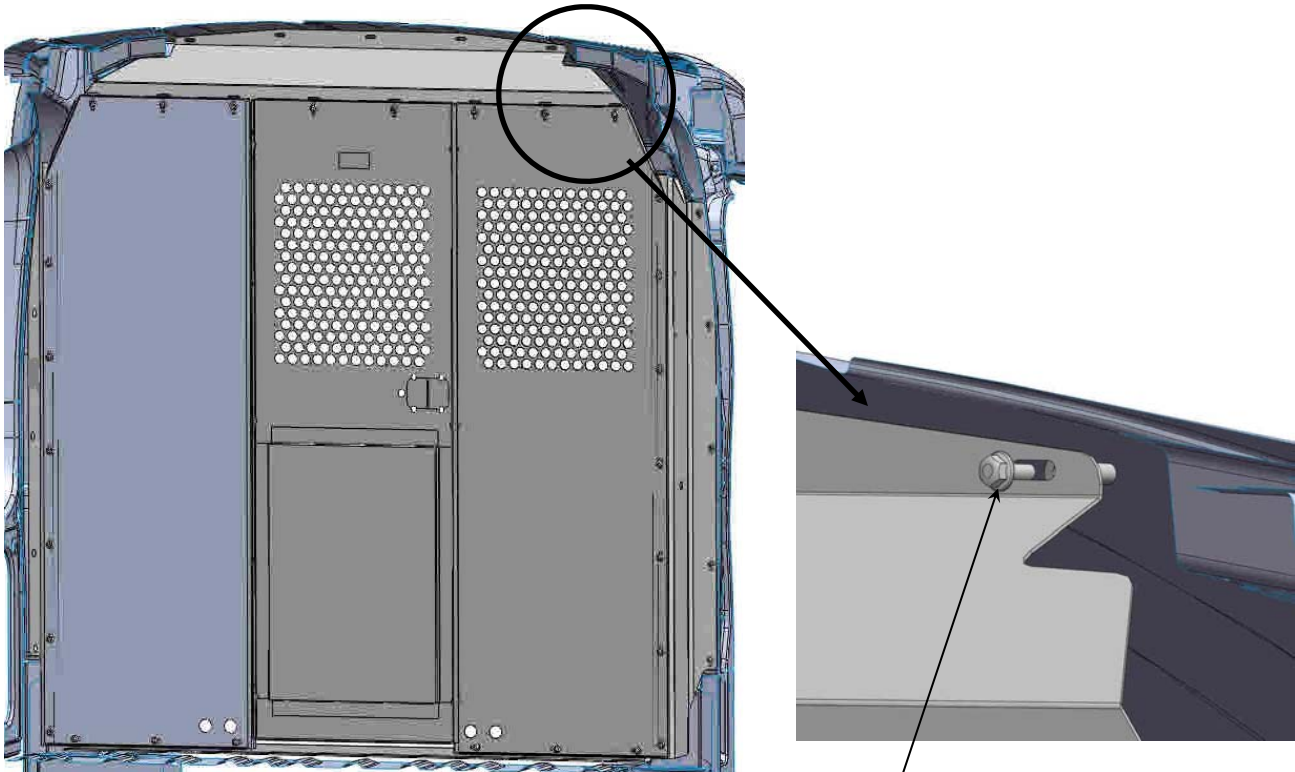


ONLY USE INDICATED HOLES
SHOWN IN PICTURE ABOVE!

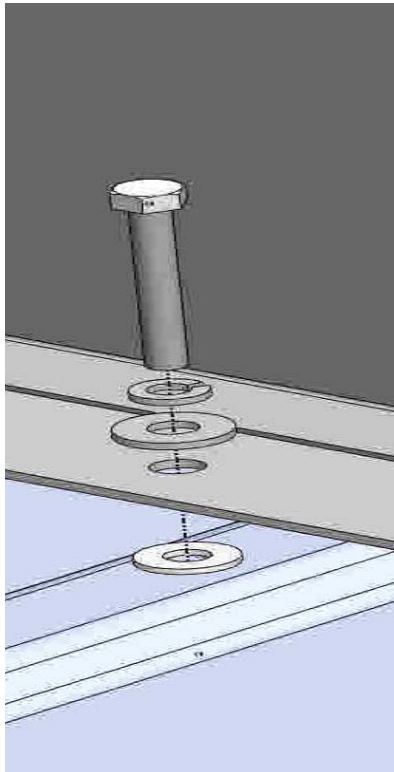
**DO NOT USE
THESE HOLES!
GAS TANK AREA!**

TRANSFER HOLES (4)
OPEN HOLE UP TO 1/2" DIA
WITH DRILL STOP
ADD PLUSNUTS
FAS0091—5/16 PLUSNUT (4)

STEP 8 CAREFULLY PLACE PARTITION BACK IN VEHICLE



FAS0018— SCREW, HH FLANGE (5)

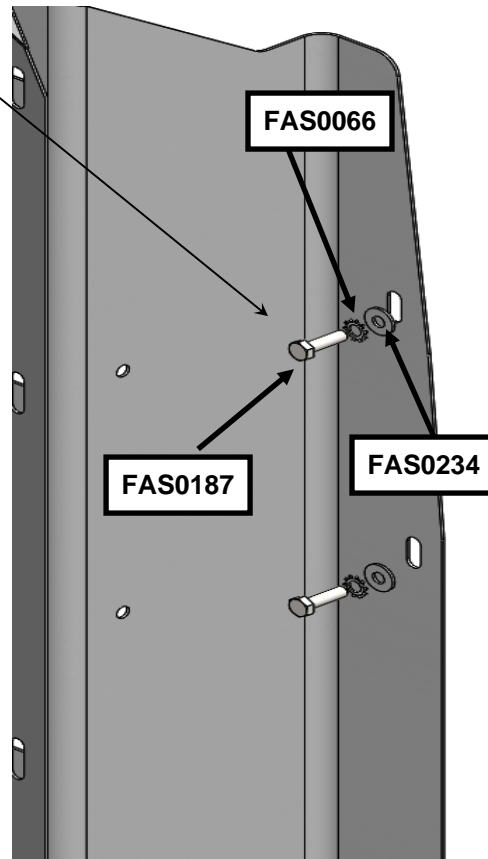
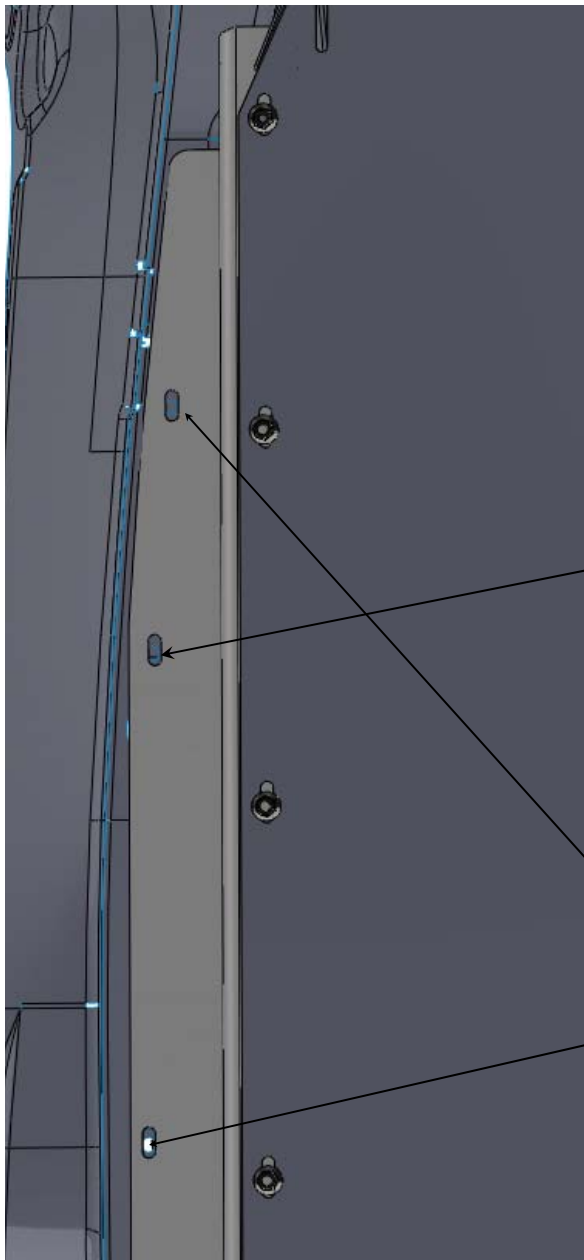


FAS0095—HHCS (5)
FAS0098—LOCK WASHER (5)
FAS0086—FLAT WASHER (5)
03927-1—SHORT SPACER (5)
WITH OEM WHEEL WELL

STEP 9 - ATTACH WINGS TO VEHICLE WITH OEM INSERTS

EXISTING M6 X 1 INSERTS
FAS0187— SCREW, HH M6-1X22 SS (5)
FAS0066—STAR WASHER (5)
FAS0234—FLAT WASHER (5)

NOTE: VEHICLE MAY BE SUPPLIED WITHOUT OEM FASTENERS. 1/4-20 PLUSNUTS AND FASTENERS MAY BE USED AS ALTERNATE FASTENING METHOD. (INSTALLER SUPPLIED FASTENERS).



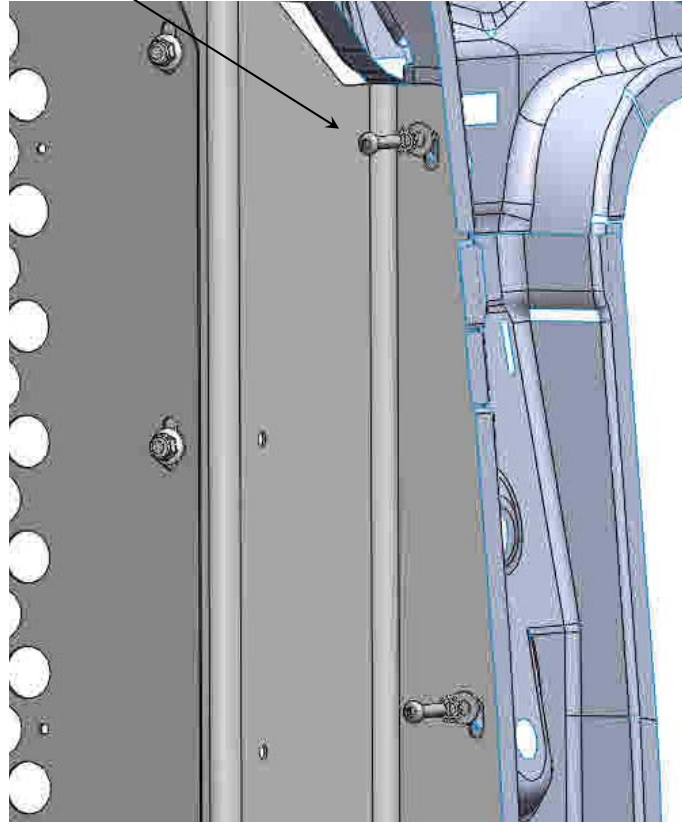
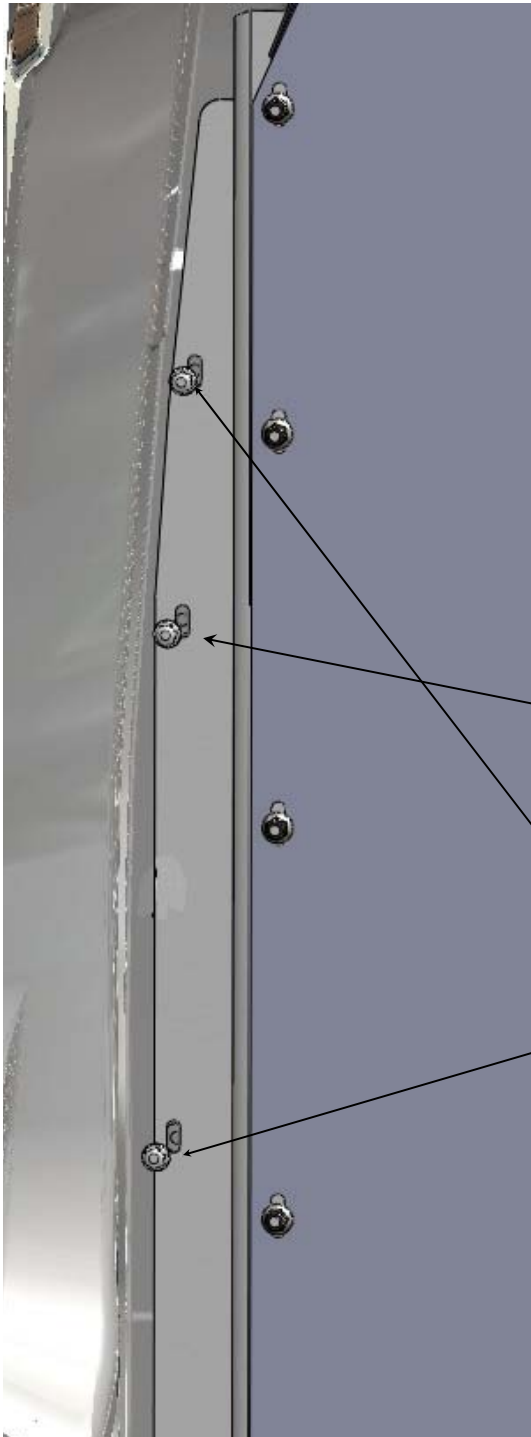
STREET SIDE WING
EXISTING M6 X 1 INSERTS
FAS0187— SCREW, HH M6-1X22 SS (5)
FAS0066—STAR WASHER (5)
FAS0234—FLAT WASHER (5)

NOTE: VEHICLE MAY BE SUPPLIED WITHOUT OEM FASTENERS. 1/4-20 PLUSNUTS AND FASTENERS MAY BE USED AS ALTERNATE FASTENING METHOD. (INSTALLER SUPPLIED FASTENERS).

FOR VEHICLES WITH LINER AND BRACKET WORK WITH STEP 10 BEFORE PUTTING BOLTS IN THESE TWO HOLES.

STEP 9 - ALTERNATE: ATTACH WINGS BY INSTALLING PLUSNUTS

NOTE: VEHICLE MAY BE SUPPLIED WITHOUT OEM FASTENERS. 1/4-20 PLUSNUTS (FAS0052) AND FASTENERS MAY BE USED AS ALTERNATE FASTENING METHOD. (FAS0018).



WITH INSTALLED PLUSNUTS
FAS0018— FLANGE HEAD (5)

FOR VEHICLES WITH LINER AND
BRACKET WORK WITH STEP 10
BEFORE PUTTING BOLTS IN
THESE TWO HOLES.

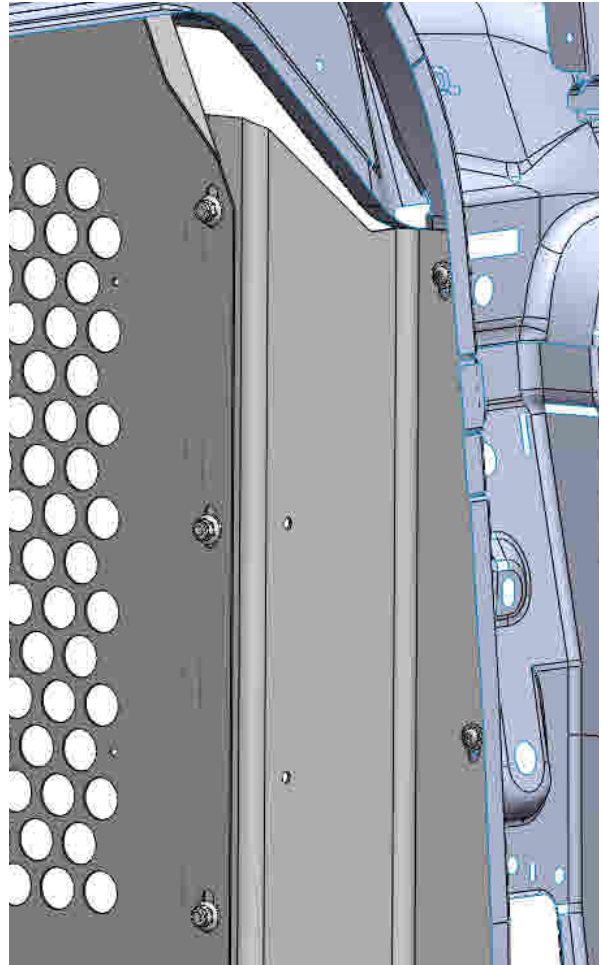
STEP 10 - PLACE SS BRACKET AND LINER BACK INTO THE VEHICLE

REPLACE BRACKET FROM SS
B-PILLAR (2 BOLTS).



REPLACE ALL REUSABLE PUSH
PINS INTO SS LINER PANEL.

STEP 11 - ATTACH GRAB HANDLE TO WING



FAS0018 - HEX FLANGE SCREW (2) CAB SIDE
FAS0055 - NYLOCK NUT (2) CARGO SIDE

YOUR INSTALLATION IS NOW COMPLETE

**DOUBLE CHECK ALL FASTENERS LOCATIONS TO BE SURE THAT ALL
FASTENERS ARE TIGHTENED TO SPECIFICATIONS.
YOUR INSTALLATION IS NOW COMPLETE!
STOW THIS COPY IN THE VEHICLE FOR FUTURE REFERENCES!**