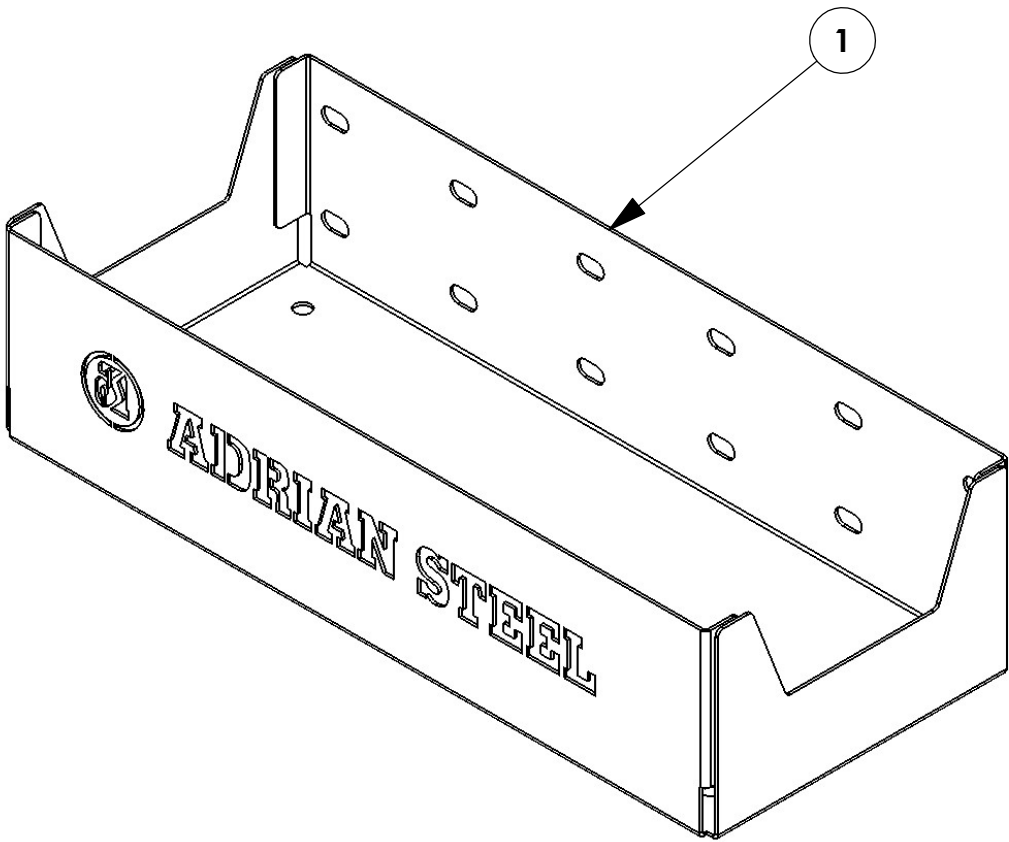


INSTR. : NUMBER : 69804	PG: 1	REV: B	ITEM NO.	PART NUMBER	DESCRIPTION	QTY.
			1	69802-G	HVAC PUMP STORAGE, GRAY	1
PART : NUMBER : 69802-G						
PART • DESC. • HVAC PUMP STORAGE, GRAY						



GET TO KNOW THE VEHICLE - AT THE BEGINNING OF ANY INSTALLATION, CHECK THE LOCATION OF THE FUEL TANK, FUEL LINES, BRAKE LINES, HIGH VOLTAGE BATTERIES AND WIRING HARNESSES TO AVOID INJURY OR PROPERTY DAMAGE FROM TOOL CONTACT.

SEAL ALL EXTERIOR HOLES - ALL INSTALLATION HOLES SHOULD BE SEALED WITH BUTYL TAPE OR SILICON TO PREVENT WATER AND EXHAUST GASES FROM ENTERING THE VEHICLE.

CONTROL DRILL DEPTH - TO AVOID DAMAGE TO THE VEHICLE, USE A DRILL STOP OR CLEARED STEP BIT WHEN DRILLING INSTALLATION HOLES.

ALWAYS ADD PRIMER - WHEN ADDING INSTALLATION HOLES BE SURE TO USE A SELF-ETCHING PRIMER TO PREVENT CORROSION, FASTENER FAILURE AND INJURY.

MOUNTING POINTS MUST HAVE METAL-TO-METAL CONTACT - USE PROVIDED MOUNTING SPACERS TO ACCOMMODATE FOR VEHICLE FEATURES, CARPET OR SUBFLOORS.

PROVIDE CLEARANCE FOR SPACERS - IF THE INSTALLATION VEHICLE CONTAINS A CARPET OR SUBFLOOR, USE A 1-3/16" DIAMETER CARPET CUTTER (P/N: 31183-0) AT ALL MOUNTING LOCATIONS TO OPEN UP ROOM FOR SPACERS.

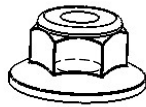
CHECK SPACER ORIENTATION - BE SURE THAT THE INDENT IN THE SPACER COVERS THE PLUSNUT HEAD; THIS ENSURES THE MOST METAL-TO-METAL CONTACT AND REDUCES VIBRATION.

PLUSNUT INSTALLATION - A PLUSNUT GUN IS RECOMMENDED FOR PLUSNUT INSTALLATION FOR ITS PRODUCTION SPEED. HOWEVER, A PLUSNUT SETTING TOOL CAN ALSO BE USED (P/N: 22200-0).

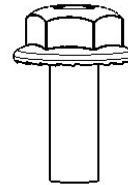
THRU-BOLT CLEARANCE - WHEN USING A THRU-BOLT AT ANY MOUNTING LOCATION, BE SURE THAT YOUR HOLE HAS 1/16" CLEARANCE.

FASTENERS USED**BAGS REFERENCED: BAG65880 AND BAGPEPACCMNT4**

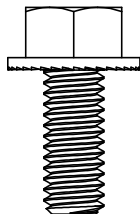
FAS0055
NUT, HEX NLK
FLG 1/4-20 ZP
QTY: 04



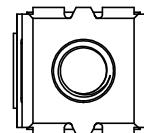
FAS0018
SCREW, HH SFLNG
1/4-20 X .62 ZP
QTY: 04



FAS00438
SCREW,
HFLNG 5/16-
18X.75ZP
QTY: 04



FAS0915
SNAP-IN NUT,
0.028-0.056"
QTY: 04



**STEP 1 - MOUNTING THE HVAC PUMP STORAGE UNIT.
THIS UNIT CAN BE MOUNTED IN VARIOUS LOCATIONS.**

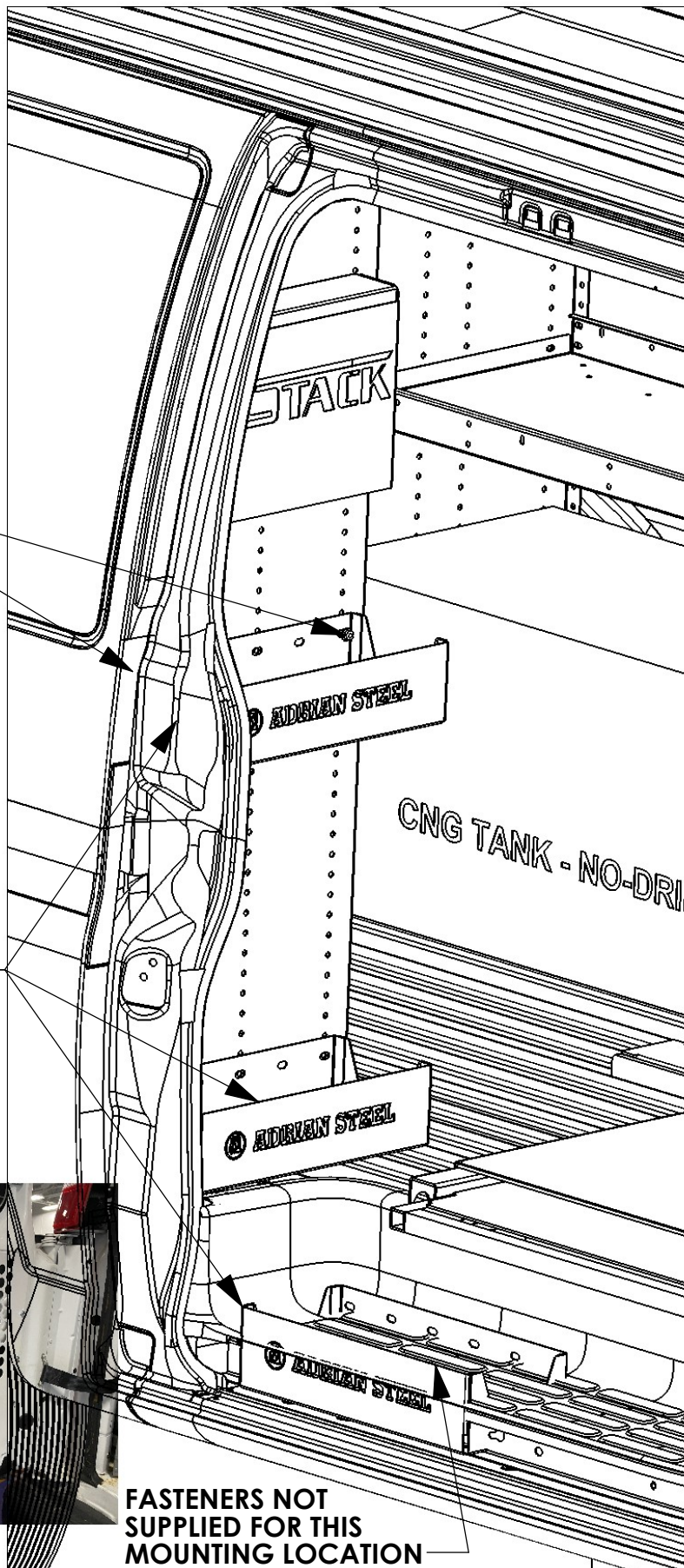
USE FAS0055 AND FAS0018
(02 PLACES)
7/16 WRENCH
7/16 SOCKET

POSSIBLE MOUNTING
LOCATIONS FOR THE HVAC
PUMP STORAGE UNIT

ANOTHER LOCATION FOR
MOUNTING THE HVAC PUMP
STORAGE UNIT



FASTENERS NOT
SUPPLIED FOR THIS
MOUNTING LOCATION

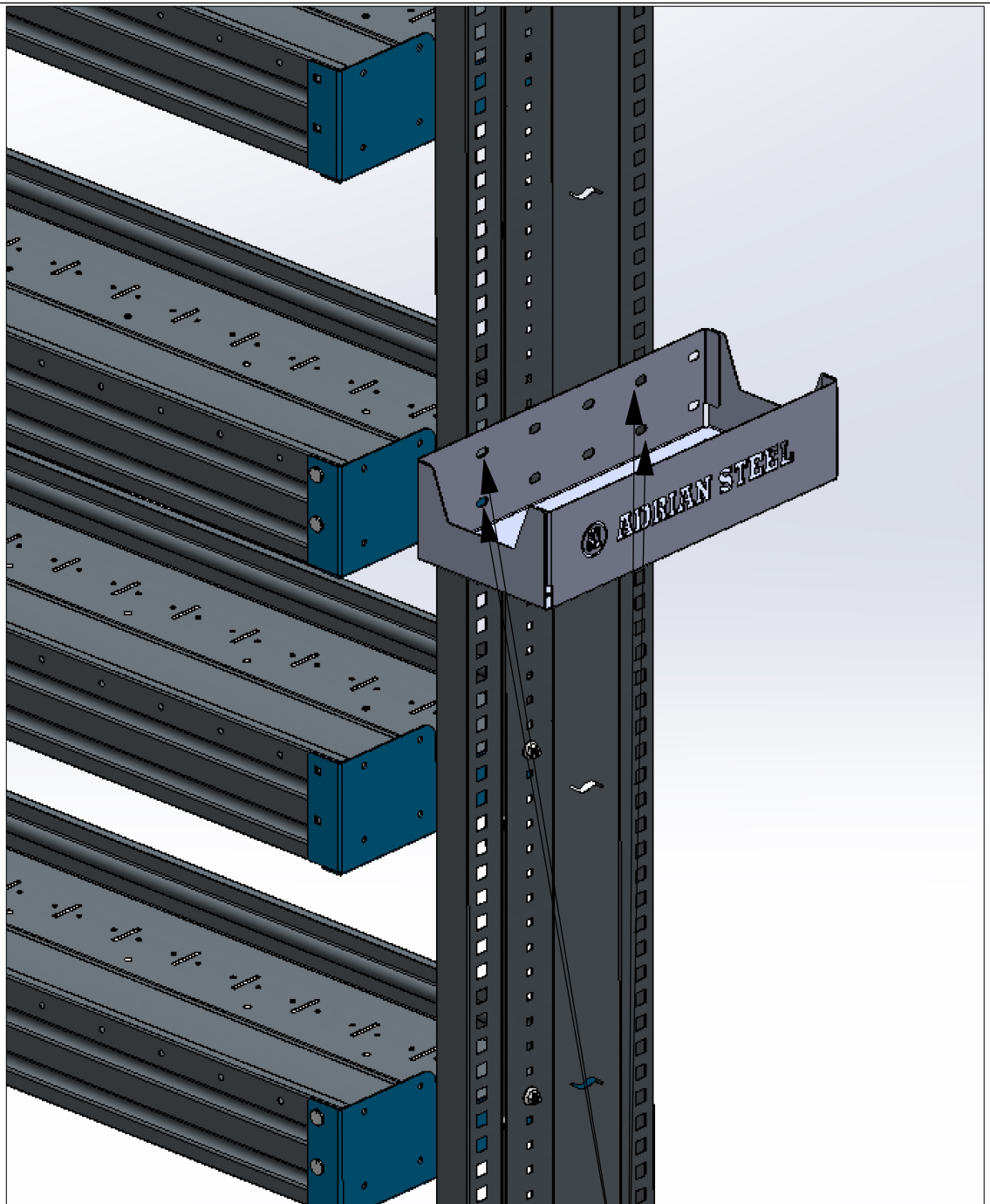


STEP 1 - MOUNTING TO NEW ASC END PANEL

STEP 1: ALIGN VPH1 IN DESIRED LOCATION, INSERT FAS0915 (QTY: 4) IN CORRESPONDING SQUARE CUTOUTS.

STEP 2: RE-ALIGN VPH1 AND FASTEN USING FAS0438 (QTY: 4) AND 1/2" SOCKET OR WRENCH

STEP 3: FULLY TIGHTEN ALL FASTENERS



BRKT DESIGN TO FIT CENTERED OR FLUSH WITH EP ON EITHER SIDE.

STEPS 1-3

INSTALLATION IS NOW COMPLETE!