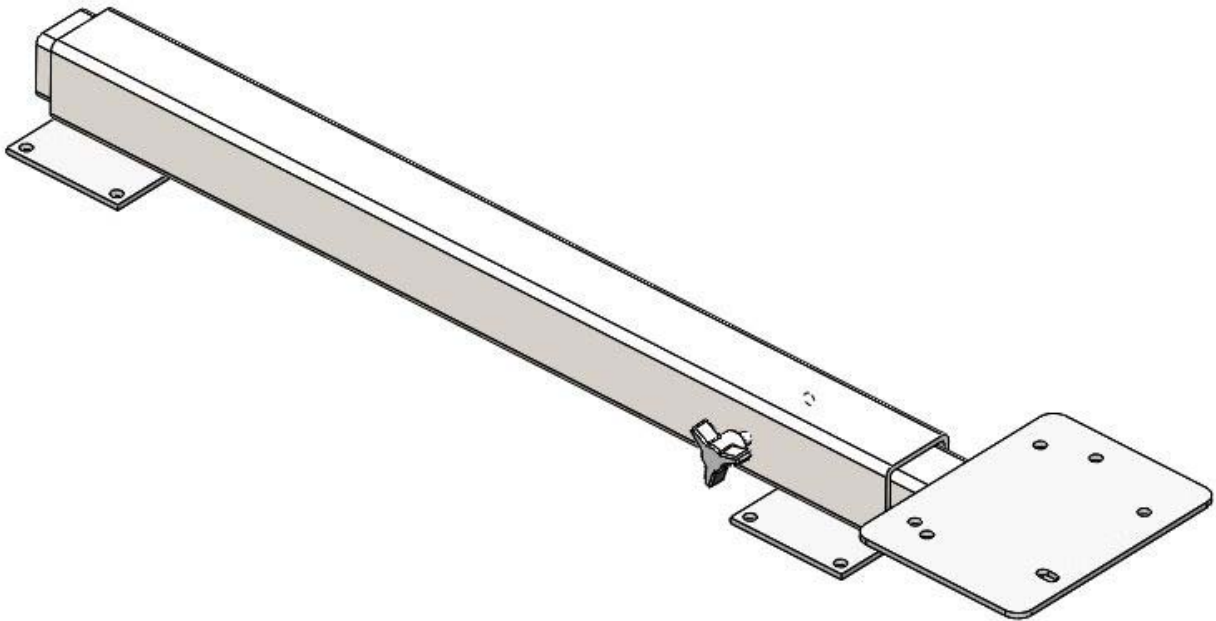


Introduction / Comments:

This instruction outlines installation of a Vise Mount Assembly.

Note:

It is advised that all fasteners used in this assembly and installation should be checked for tightness at the following intervals: @ 2-weeks and again @ 6-weeks of operation. This preventive maintenance step must be completed to ensure your Product gives you long service life.



VMA36
Vise Mount Assembly

- PRECAUTIONS -



CAUTION



**THE USE OF AIR IMPACT TOOLS CAN
OVER-TORQUE FASTENERS AND
CAUSE FASTENER FAILURE!**



CAUTION



**ALL INSTALLATION HOLES SHOULD BE SEALED
WITH SILICON OR BUTYL SEALANT TO PREVENT
EXHAUST FUMES FROM ENTERING THE VEHICLE!**



DANGER



**INSPECT FOR FUEL TANK, FUEL LINES, BRAKE LINES, HIGH
VOLTAGE BATTERIES AND ELECTRICAL LINES PRIOR TO
DRILLING TO AVOID DAMAGING CRITICAL VEHICLE SYSTEMS
OR INJURY TO INSTALLER DURING INSTALLATION PROCESS!**



CAUTION



**TO AVOID DAMAGING THE VEHICLE ALWAYS USE DRILL
STOPS WHEN DRILLING ANY INSTALLATION HOLES!
ADRIAN AVAILABLE PART #'S 31121-0 (3/8" X 1/2"
DEEP), 31121-0 (1/2" x 1/2" DEEP)**



- IMPORTANT WARRANTY REQUIREMENTS -

1. SUBSTITUTING ADRIAN STEEL SPECIFIED FASTENERS FOR ASSEMBLY AND/OR INSTALLATION WILL VOID YOUR PRODUCT WARRANTY.
2. ALL HOLES DRILLED INTO VEHICLE SHOULD HAVE THE RAW METAL EDGES SEALED WITH A SELF-ETCHING PRIMER TO RESIST CORROSION AND POTENTIAL FASTENER POINT FAILURE.
3. ALL FASTENERS USED IN THE INSTALLATION OF THIS PRODUCT SHOULD BE TIGHTENED TO THE TORQUE(S) SPECIFIED IN THESE INSTRUCTIONS.
4. THESE INSTRUCTIONS SHOULD BE KEPT WITH THE VEHICLE.

THE BASIC TOOLS NEEDED FOR MOST INSTALLATIONS



DRILL



DRILL BIT WITH
STOP



RATCHET, SOCKETS
AND/OR WRENCHES



SCREWDRIVERS



MEASURING TAPE

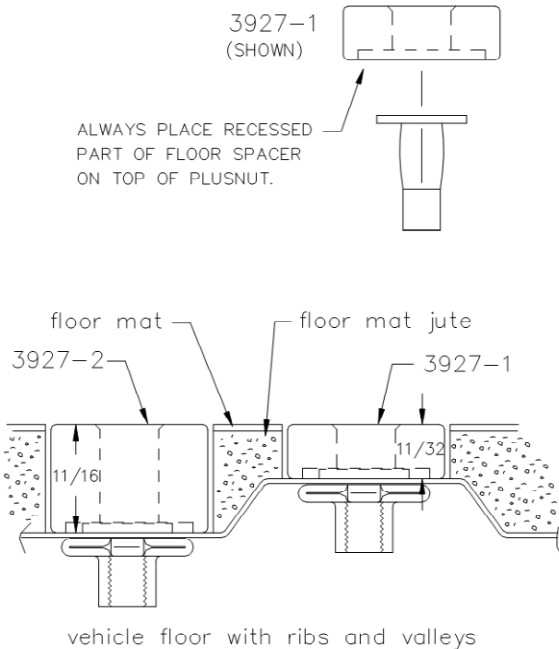
ADDITIONAL TOOLS MAY BE NEEDED FOR THIS INSTALLATION AND THEY WILL BE IDENTIFIED IN THE STEPS THAT FOLLOW.

If your vehicle contains carpet or a rubber floor mat you will need to prepare the mounting location. Position the product to be installed into the vehicle and once you are satisfied with the mounting locations, mark the mounting locations. Using a 1-3/16" diameter carpet cutter (P/N: 31183-0). Select the appropriate floor spacers as shown in the illustration. Set those aside for use later into the installation process.

Using the correct drill bit size for the selected plusnut, drill the mounting holes in the vehicle sheet metal to prepare for installing the plusnuts.

If you are thru-bolting at any of the locations simply drill a hole that is 1/16" larger than the bolt size(s) for those locations.

Once you have drilled the holes into the vehicle, the raw metal edges should be sealed using a self-etching primer to resist corrosion and potential fastener point failure.



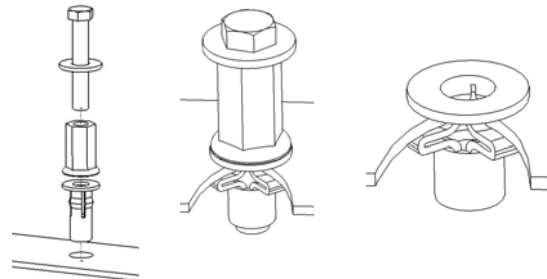
A PLUSNUT (RIVNUT) SETTING TOOL IS REQUIRED FOR PLUSNUT (RIVNUT) INSTALLATION . PLUS NUT SETTING TOOL CAN BE ORDERED THROUGH ADRIAN STEEL, OR USE AN AIR POWERED PLUSNUT SETTING GUN.

1/4-20UNC Plusnut (FAS0052) Use 3/8" dia. drill w/stop

FAS0080 SCREW, HXHD, 1/4-20UNCx2.00", G8
FAS0067 WASHER, FLAT, 1/4"ID
22200-0 PLUSNUT TOOL

5/16-18UNC Plusnut (FAS0091) Use 1/2" dia. drill w/stop

FAS0095 SCREW, HXHD, 5/16-18UNCx2.00", G8
FAS0086 WASHER, FLAT, 5/16"ID
22200-0 PLUSNUT TOOL

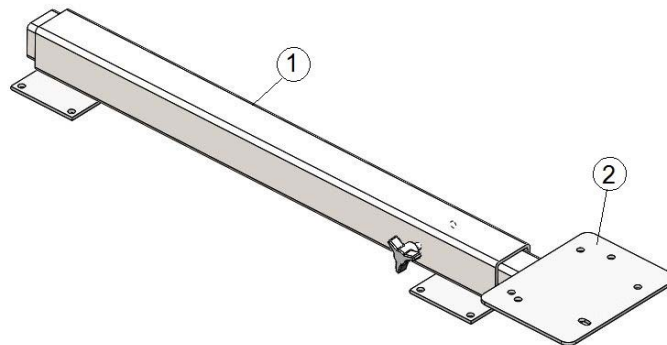


Place barrel of the plusnut body in sheet metal thru hole until flange is flush with sheet metal.

Using a 9/16" combination wrench of plusnut tool body and a second hand wrench, ratchet, or air tool, rotate the hex bolt head CW to draw plus nut flanges up (set the plusnut).

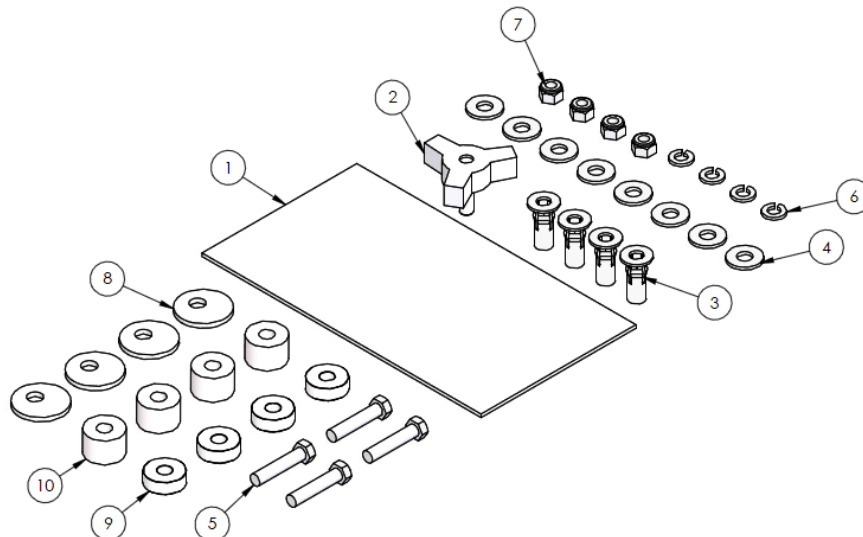
Product List

ITEM NO.	PART NUMBER	DESCRIPTION	VMA38/QTY.
1	13113-0	MOUNT BAR	1
2	13112-0	WISE MOUNT BAR	1
3	BAG13111-0	BAG FOR VISE MT ASSEMBLY	1
4	CRT13111-0	CARTON FOR VISE MOUNT	1
5	52920	INSTRUCT, VISE MOUNT	1

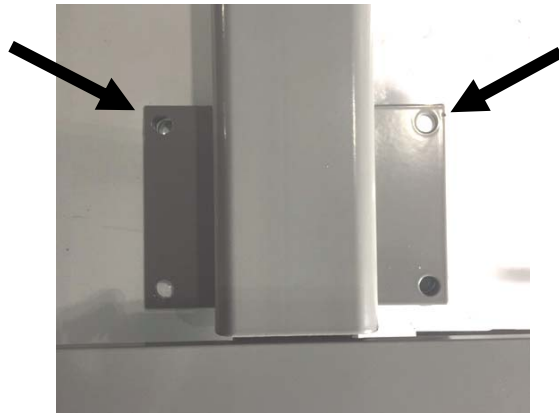


**Installation and/or Assembly Fasteners
(BAG13111-0)**

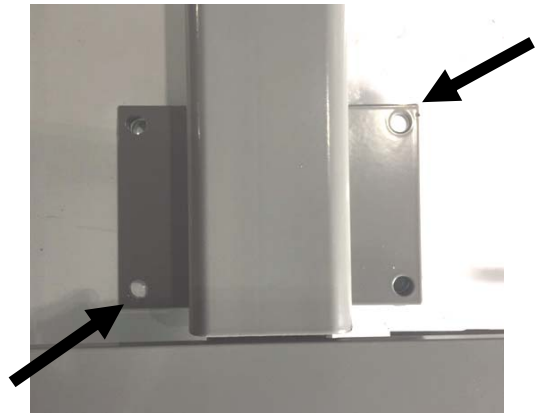
ITEM NO.	PART NUMBER	DESCRIPTION	BAG13111-0./QTY.
1	BAG0509-A	5"X9" 4MIL AUTOBAG	1
2	16274-0	KNOB, 3/8-16X.625 G5	1
3	FAS0091	Plusnut, 5/16	4
4	FAS0086	WASHER,FLAT USS 5/16 ZP	8
5	FAS0092	Screw, Hex Hd, 5/16-18x1.50 Zn Plate, G8	4
6	FAS0098	Washer, Lock, Split, 5/16, Zinc Plate	4
7	FAS0090	Nut, Nylon Insert Lock, 5/16-18, Zi	4
8	21166-0	ECCENTRIC WASHER	4
9	03927-1	Floor Spacer Short	4
10	03927-2	Tall Floor Spacer	4



STEP 1: Place Vise Mount in vehicle in desired position on floor of vehicle. Ensure location is clear of gas tanks, fuel/brake/electrical lines, and spare tire. There are four holes on each plate of mount bar, there must be a minimum of 2 fasteners opposite each (crosswise) other on each plate. (See images below for reference). Mark holes then place vise mount aside for drilling. The vise mount assembly must be bolted through the floor and through a frame member for extra reinforcement. Extend and vise mount bar to ensure there is no interference with top plate and surrounding components or vehicle body.



Parallel Mounting



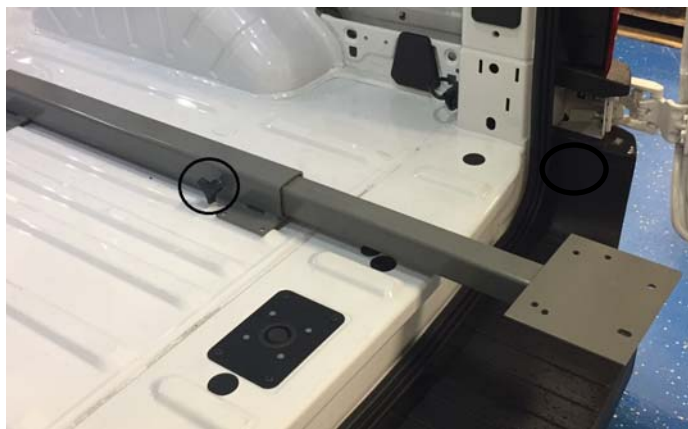
Crosswise Mounting

STEP 2A FOR THRU BOLT: Using a 11/32" (.343) drill bit with drill stop, drill holes on previous marked locations from STEP 1. Seal all holes with self etching primer.

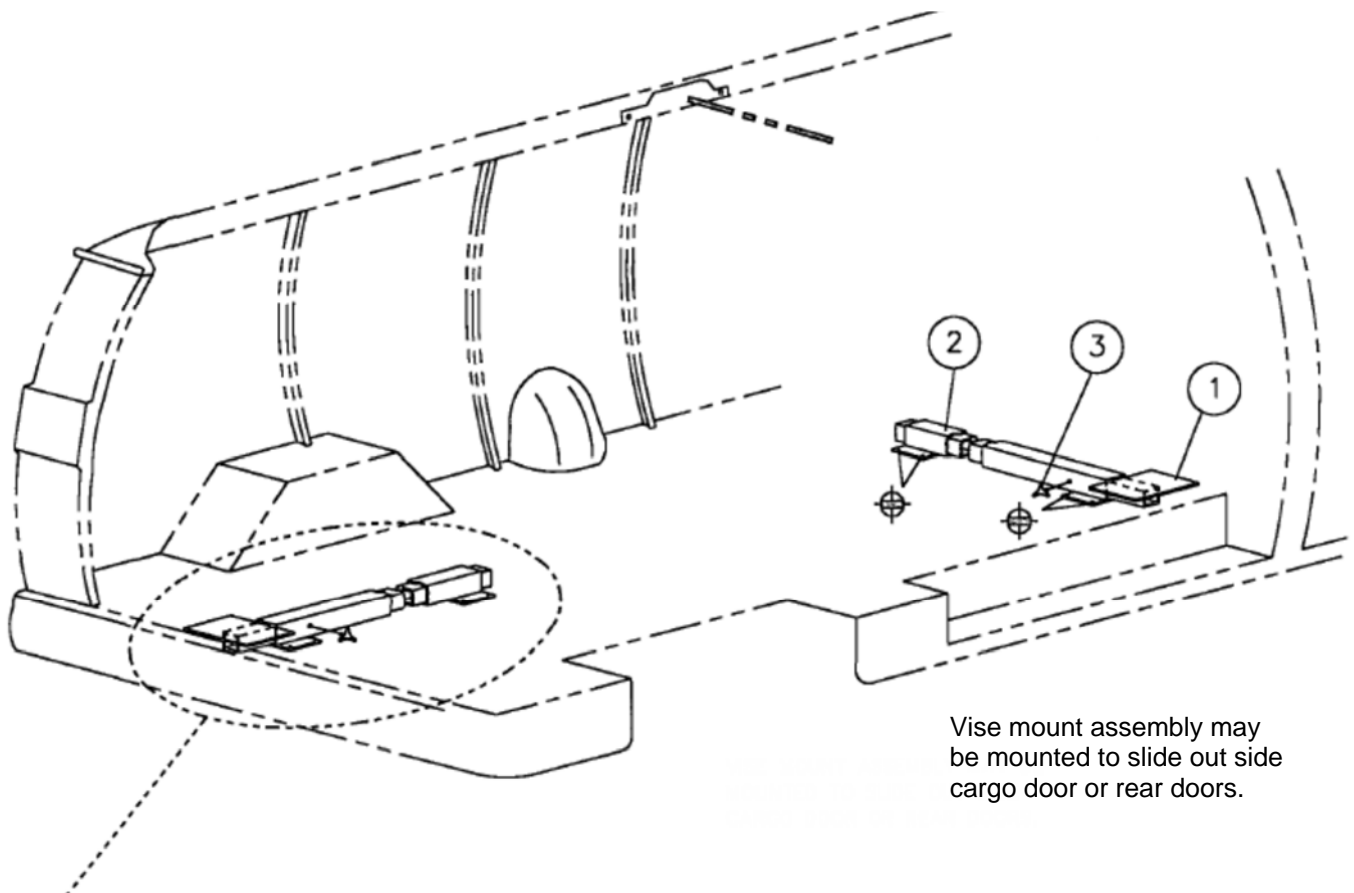
STEP 2B FOR THRU BOLT: Place spacers over holes then vise mount on spacers. Apply a split washer over a hex screw and then a flat washer, place fastener combination in vise mount holes. From underside of vehicle place eccentric washer and then lock nut. Tighten fastener combination and vise mount to floor.

STEP 3A FOR PLUSNUT: Using a 1/2" (.500) drill bit with stop, drill holes on previous marked locations from STEP 1. Seal all holes with self etching primer.

STEP 3B FOR PLUSNUT: Place spacers over holes then vise mount on spacers. Place 5/16" plusnut in hole and set plusnut (Refer to Page 3 for how). Apply a split washer over hex screw and then a flat washer, place fastener combination in vise mount holes and fasten vise mount to floor.



Thumb knob can be used on either side of vise mount according to preference. The thumb knob is used to secure the inner tube during transit and use.



Rear installation is NOT RECOMMENDED if gas tank is in this area. Use caution for location of installation.

Vise mount assembly may be mounted to slide out side cargo door or rear doors.

**DOUBLE CHECK ALL FASTENERS LOCATIONS TO BE SURE THAT ALL
FASTENERS ARE TIGHTENED TO SPECIFICATIONS.
YOUR INSTALLATION IS NOW COMPLETE!
STOW THIS COPY IN THE VEHICLE FOR FUTURE REFERENCES!**