

FOLDING VISE MOUNT, 24"



PRODUCT WEIGHT
20 LBS

WIDTH x DEPTH x HEIGHT
6.5" x 10" x 25"
STOWED

CAPACITY
150 LBS APPLIED

COLOR

GRAY

CATALOG NUMBER

VMA24F

PRODUCT FEATURES

The folding vise mount pivots to allow for efficient use of cargo space. A spring-pin lock the mount in its upright stowed position and its lowered use position. A damper controls the deployment of the vise for safety. When deployed, the vise mount extends 24" to allow for use outside the van. The mount can be installed to deploy out the rear and side doors of the van.

SEE PAGE 2 FOR APPLICATION NOTES AND ACCESSORIES, OTHER PRODUCTS THAT WORK WITH THIS UNIT.



CATALOG NUMBER VMA24F

PRODUCT APPLICATION

This product mounts directly to the van floor in GM Express and Ford Transit full size vans.

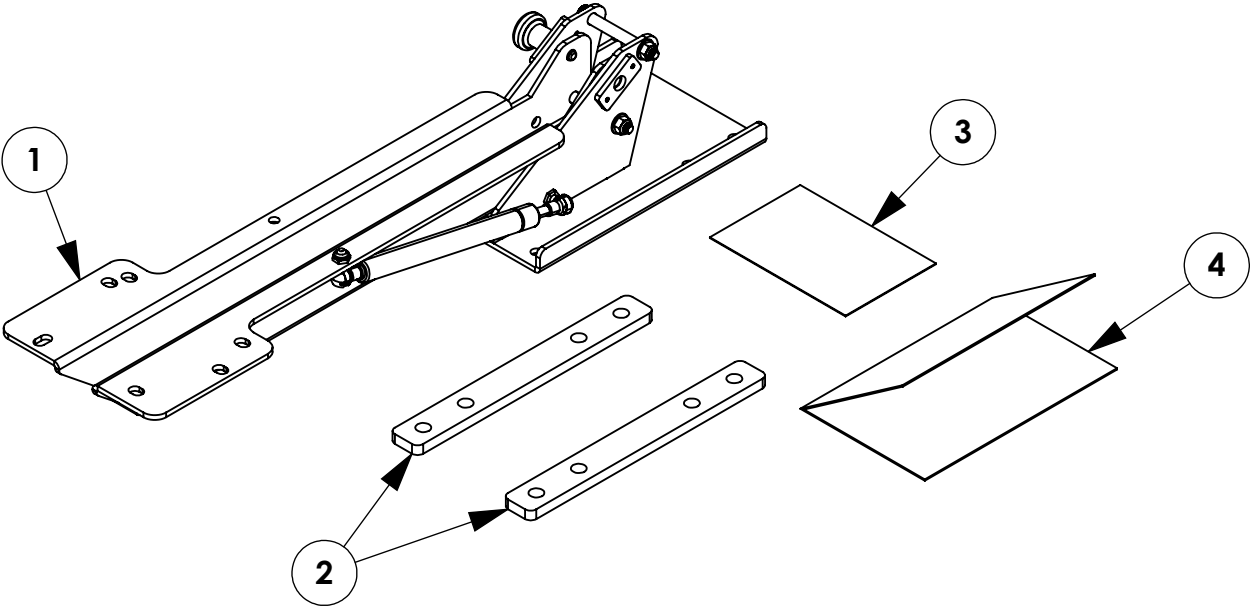
ACCESSORIES THAT WILL WORK WITH THIS PRODUCT

<i>CATALOG NUMBER</i>	<i>DESCRIPTION</i>
------------------------------	---------------------------

66853	WISE, 5.5" JAW, 5" OPENING
--------------	-----------------------------------

SPECIAL APPLICATION NOTES

INSTR. NUMBER : 67020	PG: 1	REV: A	ITEM NO.	PART NUMBER	DESCRIPTION	QTY.
			1	67022	VICE MOUNT ASSM, 24"	1
PART NUMBER : VMA24F			2	67015-G	MOUNTING SPACER, VMA24F, GRAY	2
			3	BAG67021	BAG FOR VMA24F	1
PART DESC. : VICE MOUNT, FOLDING, 24"			4	67020	INSTALL INS FOR VMA24F	1



GET TO KNOW THE VEHICLE - AT THE BEGINNING OF ANY INSTALLATION, CHECK THE LOCATION OF THE FUEL TANK, FUEL LINES, BRAKE LINES, HIGH VOLTAGE BATTERIES AND WIRING HARNESSES TO AVOID INJURY OR PROPERTY DAMAGE FROM TOOL CONTACT.

SEAL ALL EXTERIOR HOLES - ALL INSTALLATION HOLES SHOULD BE SEALED WITH BUTYL TAPE OR SILICON TO PREVENT WATER AND EXHAUST GASES FROM ENTERING THE VEHICLE.

CONTROL DRILL DEPTH - TO AVOID DAMAGE TO THE VEHICLE, USE A DRILL STOP OR CLEARED STEP BIT WHEN DRILLING INSTALLATION HOLES.

ALWAYS ADD PRIMER - WHEN ADDING INSTALLATION HOLES BE SURE TO USE A SELF-ETCHING PRIMER TO PREVENT CORROSION, FASTENER FAILURE AND INJURY.

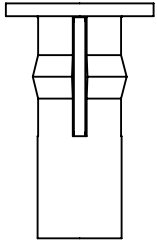
MOUNTING POINTS MUST HAVE METAL-TO-METAL CONTACT - USE PROVIDED MOUNTING SPACERS TO ACCOMMODATE FOR VEHICLE FEATURES, CARPET OR SUBFLOORS.

PROVIDE CLEARANCE FOR SPACERS - IF THE INSTALLATION VEHICLE CONTAINS A CARPET OR SUBFLOOR, USE A 1-3/16" DIAMETER CARPET CUTTER (P/N: 31183-0) AT ALL MOUNTING LOCATIONS TO OPEN UP ROOM FOR SPACERS.

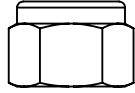
CHECK SPACER ORIENTATION - BE SURE THAT THE INDENT IN THE SPACER COVERS THE PLUSNUT HEAD; THIS ENSURES THE MOST METAL-TO-METAL CONTACT AND REDUCES VIBRATION.

PLUSNUT INSTALLATION - A PLUSNUT GUN IS RECOMMENDED FOR PLUSNUT INSTALLATION FOR ITS PRODUCTION SPEED. HOWEVER, A PLUSNUT SETTING TOOL CAN ALSO BE USED (P/N: 22200-0).

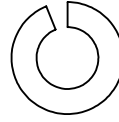
THRU-BOLT CLEARANCE - WHEN USING A THRU-BOLT AT ANY MOUNTING LOCATION, BE SURE THAT YOUR HOLE HAS 1/16" CLEARANCE.

FASTENERS USED

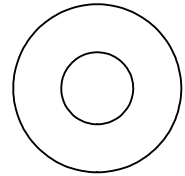
FAS0091
PLUSNUT,5/16-18
QTY: 04



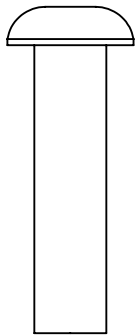
FAS0604
NUT,HEX NLK 3/8-16
QTY: 04



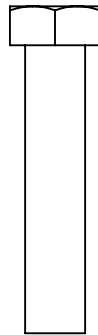
FAS0098
WASHER,LCK SPLIT 5/16
QTY: 04



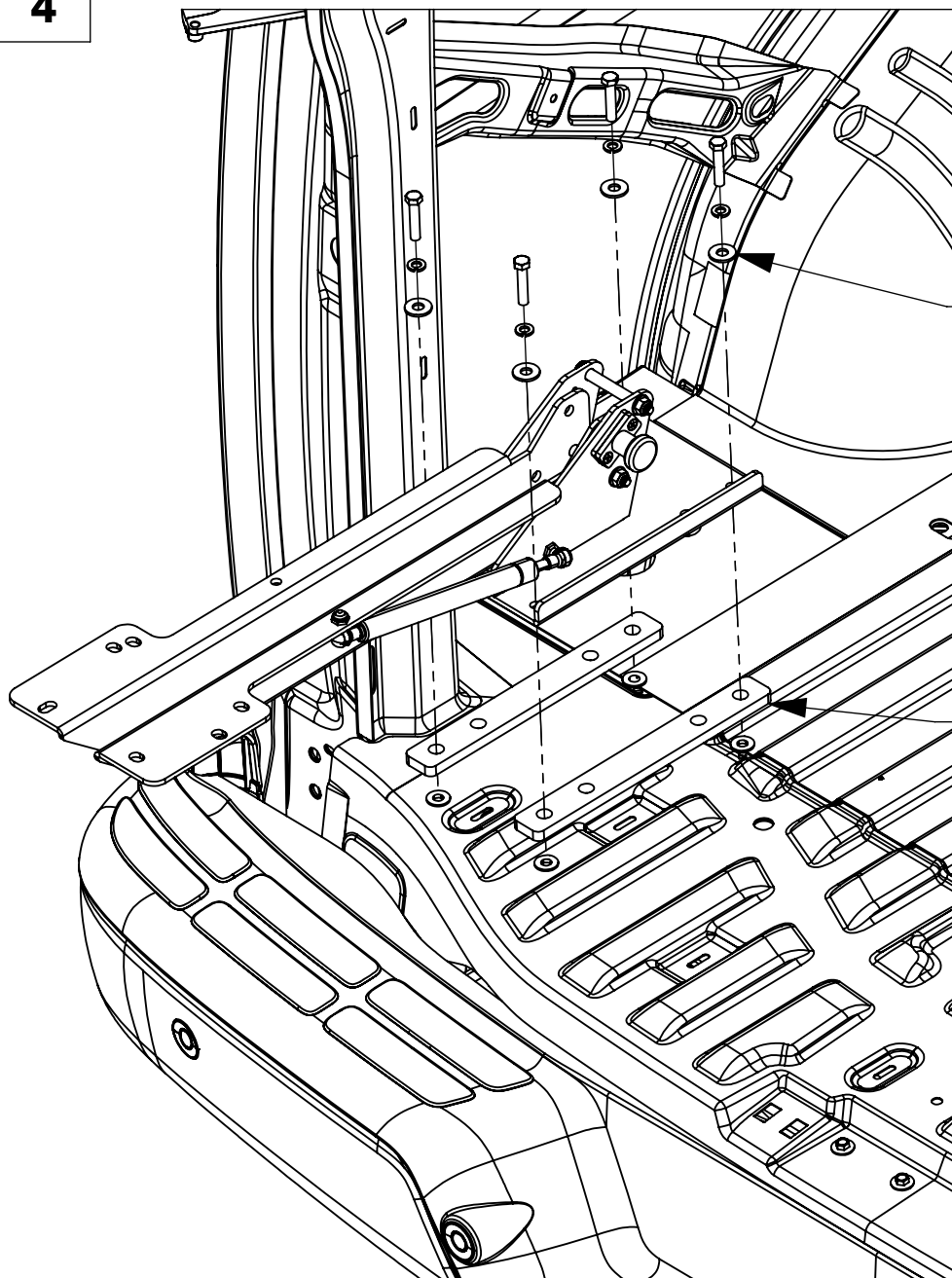
FAS0112
WASHER,FLAT USS 5/16
QTY: 12



FAS0577
SCREW,BHCS 3/8-16X1.5
QTY: 04

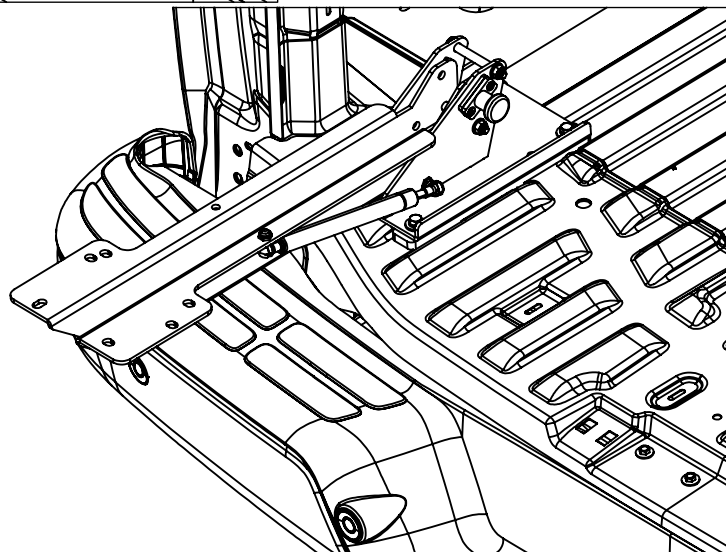


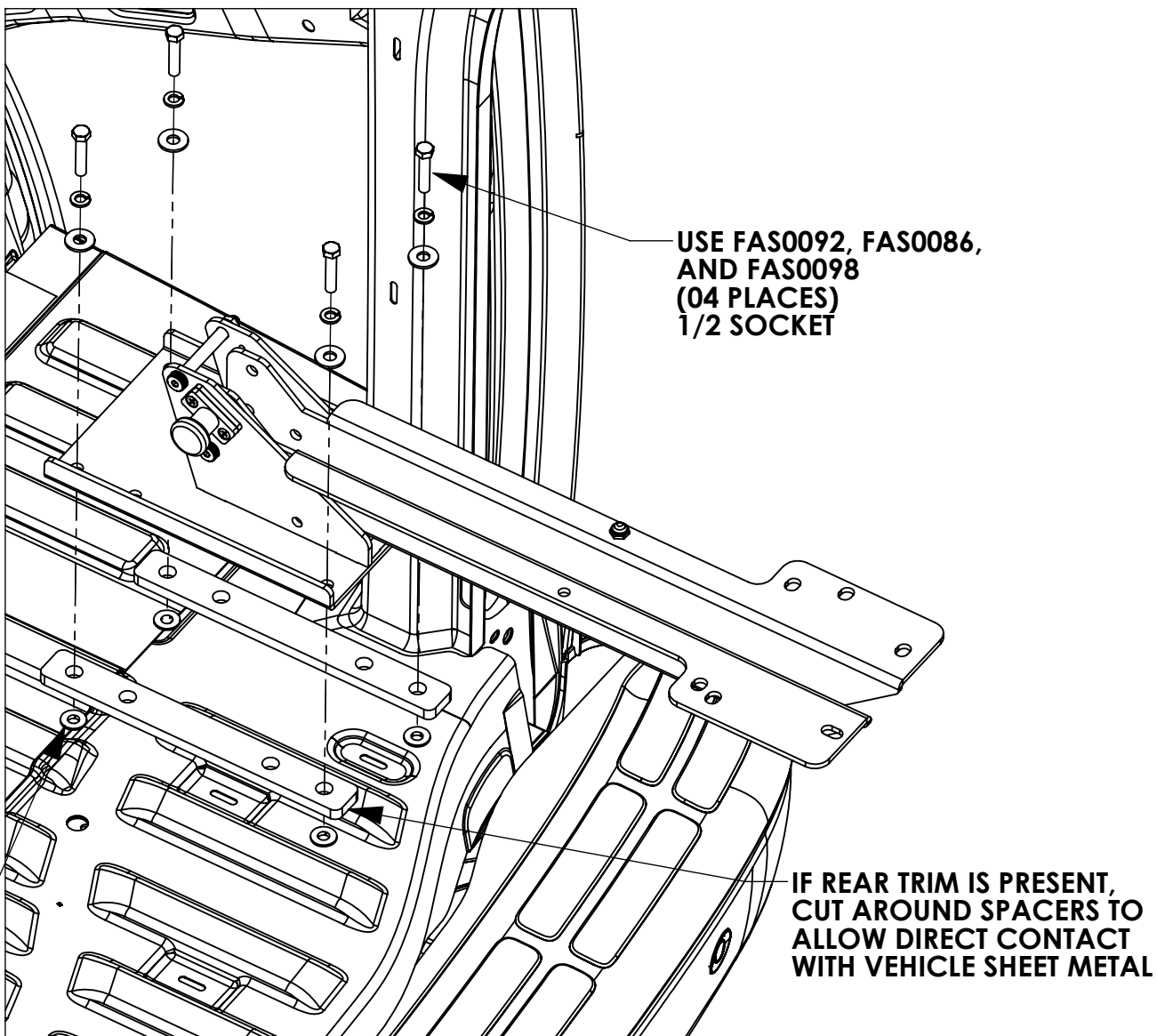
FAS0092
SCREW,HH 5/16-18X1.5
QTY: 04

STEP 1A - MOUNT VISE MOUNT TO THE VEHICLE - DRIVER SIDE REAR

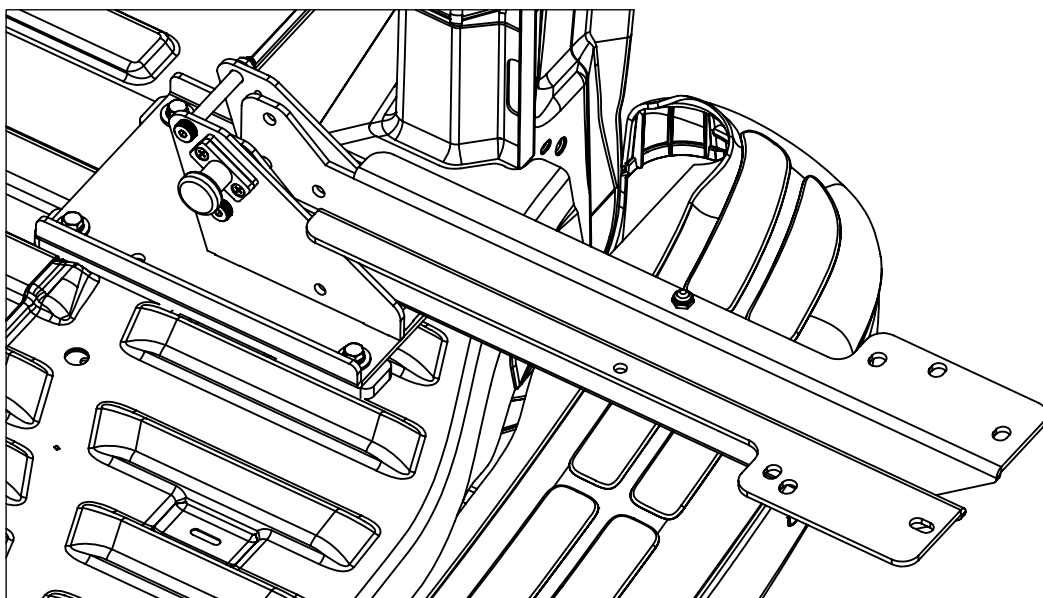
USE FAS0092, FAS0086,
AND FAS0098
(04 PLACES)
1/2 SOCKET

IF REAR TRIM IS PRESENT,
CUT AROUND SPACERS TO
ALLOW DIRECT CONTACT
WITH VEHICLE SHEET METAL



STEP 1B - MOUNT VISE MOUNT TO THE VEHICLE - PASSENGER SIDE SIDE REAR

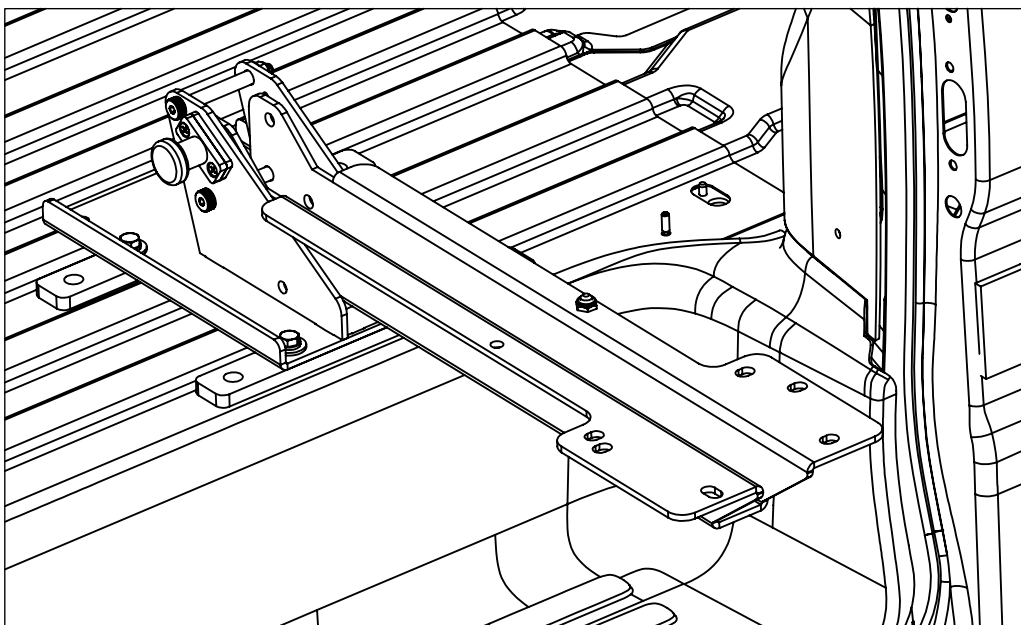
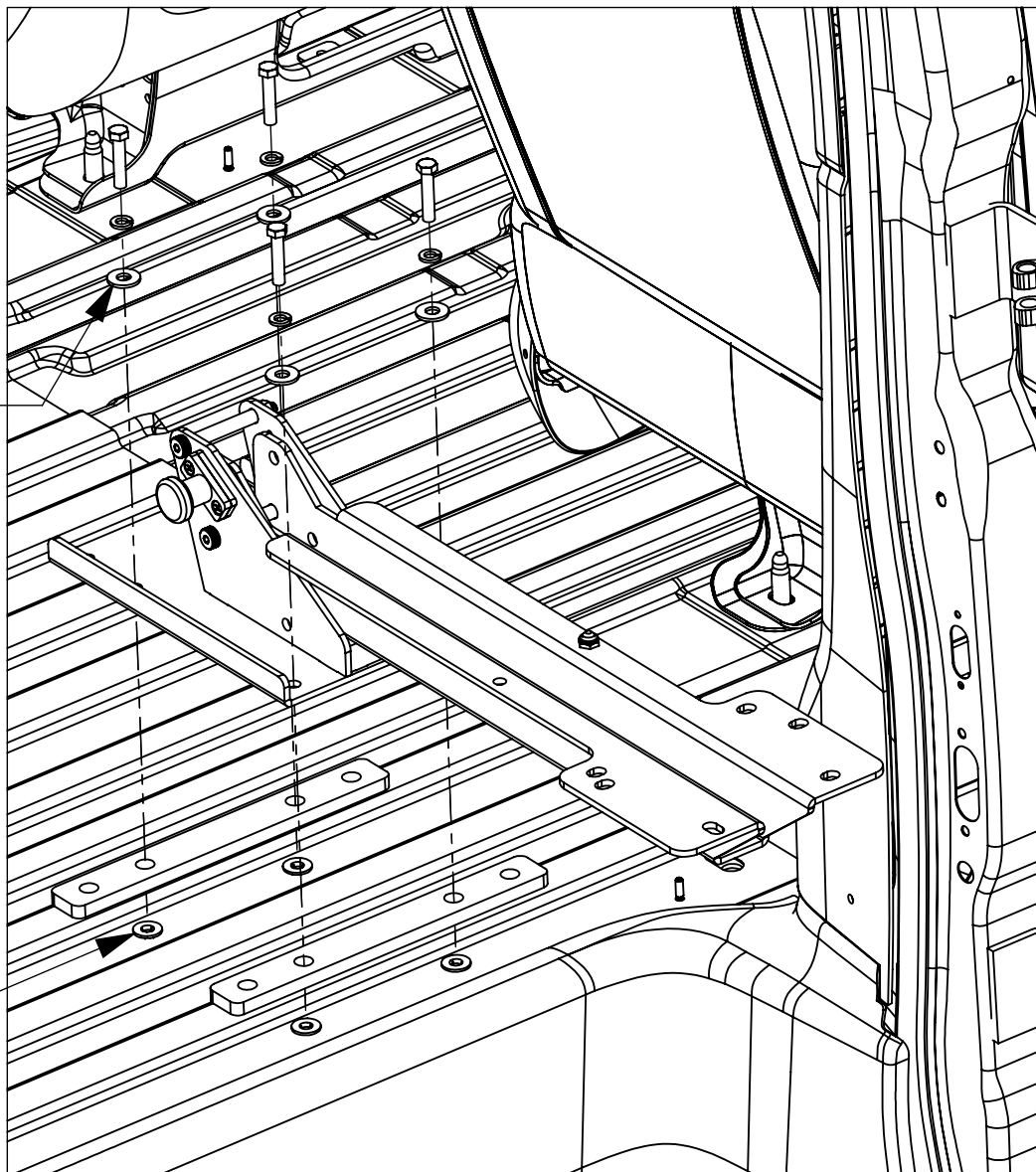
FAS0091
MARK AND DRILL
1/2" HOLE
(4) PLACES



STEP 1C - MOUNT VISE MOUNT TO THE VEHICLE - SIDE DOOR

USE FAS0092, FAS0086,
AND FAS0098
(04 PLACES)
1/2 SOCKET

FAS0091
MARK AND DRILL
1/2" HOLE
(4) PLACES

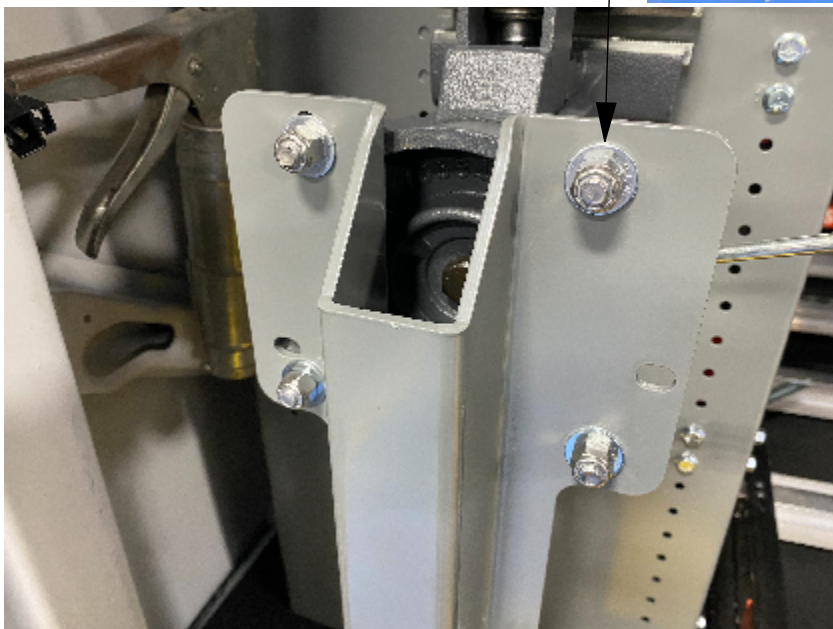
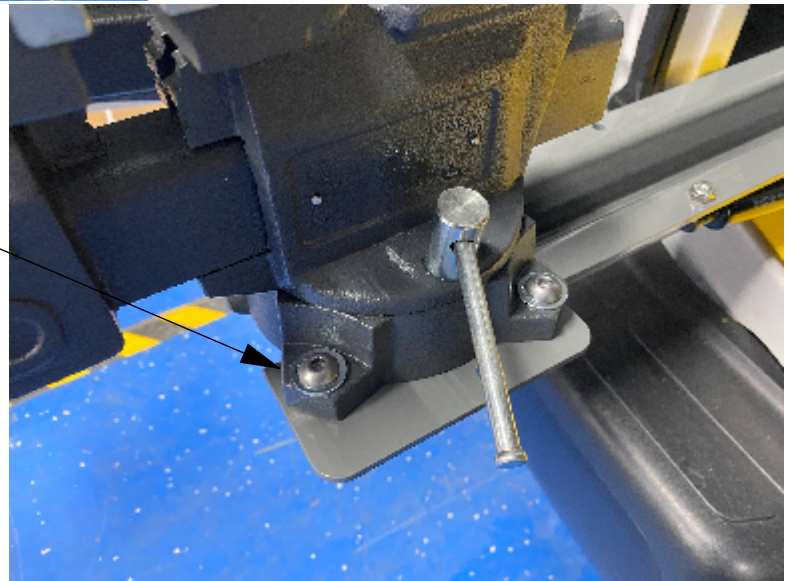


STEP 2 - MOUNT VISE TO VISE MOUNT



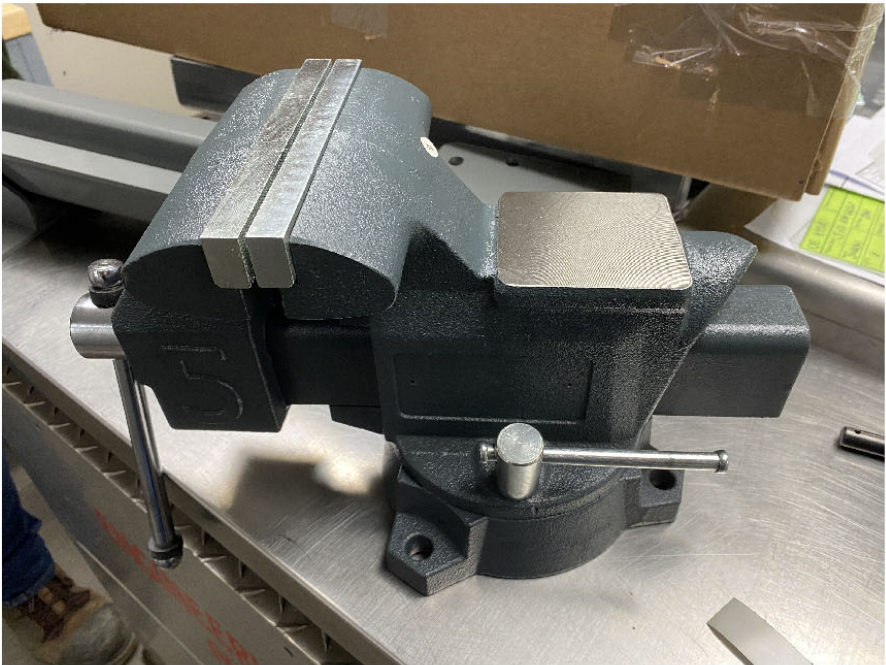
66853 VISE SHOWN

USE FAS0577, FAS0112,
AND FAS0604
(04 PLACES)
9/16 SOCKET
7/32 ALLEN



PURCHASED COMPONENT KEY FEATURES

DESCRIPTION OF REQUIREMENTS
DIMENSIONAL REQUIREMENTS (AS SHOWN ON DRAWING)
N/A
LOAD/RATING REQUIREMENT
N/A
MATERIAL REQUIREMENT
N/A
PACKAGING REQUIREMENT
N/A
OTHER REQUIREMENTS
N/A



D Series Swivel Bench Vise

Product Description

- 30,000 PSI Cast Grey Iron with Steel U Channel Bar
- 360° Swivel Base with (2) Lockdowns
- Replaceable Hardened Steel Serrated (Top) Jaws
- Permanent Serrated Pipe Jaws
- Large Pipe Jaw Capacity
- Large Anvil Work Surface
- No Pinch Main Screw Handle
- Additional Information

Product specs

Jaw Width (nominal inches) 5.5"
Jaw Opening (nominal inches) 5"
Throat Depth (nominal inches) 3.25"
Min Pipe Capacity (nominal inches) .125"
Max Pipe Capacity (nominal inches) 2.5"

Packing:

Aluminum plate for logo
Plain box

THIS DRAWING IS THE PROPERTY OF ADRIAN STEEL COMPANY AND IS NOT TO BE USED IN ANY MANNER
DETRIMENTAL TO THE INTERESTS OF ADRIAN STEEL COMPANY

TOLERANCES & INSPECTION

UNLESS OTHERWISE SPECIFIED		
ALL BEND ANGLES ARE 90 DEGREES		
ALL DIMENSIONS ARE IN INCHES.		
REFERENCE DIMENSIONS (X.XXX) DO NOT REQUIRE INSPECTION		
FEATURES	HOLES/SLOTS	ANGLES
0.0 = ± .125	0.0 = ± .062	0° = ± 2°
0.00 = ± .062	0.00 = ± .031	0.0° = ± 1°
0.000 = ± .031	0.000 = ± .015	
Material Thickness: per ASTM Std. Weld Callouts per AWS		

RELEASE & REVISIONS

INITIAL ECN: 25351
CURRENT ECN: 25351
ECN DESCRIPTION:
RELEASE TO PRODUCTION
REVISED BY: JMG


PURCHASED COMPONENT

REFERENCED SUPPLIER AND/OR MANUFACTURER
SNAP-ON
REFERENCED SUPPLIER AND/OR MANUFACTURER PART NUMBER
CEV55
COLOR (ONLY LIST IF COLOR SPECIFIC)
GRAY
COMODITY ITEM (Y/N) (YES = ALL DIMENSIONS AND NOTES ARE REFERENCE) (NOTE: DIMENSIONS AND FEATURES MAY VARY FOR A COMODITY ITEM.)
YES

PRINTED DOCUMENT IS UNCONTROLLED

Sheet 1 of 1

PART / PRODUCT IDENTIFICATION

 ADRIAN STEEL®		ADRIAN STEEL COMPANY 906 JAMES STREET, ADRIAN, MI 49221	REVISION LEVEL A
MAT'L USED: PURCHASED		DESIGNED BY: J.GEREZ	
DESCRIPTION: WISE, 5.5" JAW, 5" OPEN			
WEIGHT (Lbs.): 25.00	SEGMENT CODE: MAC	PART NUMBER: 66853	