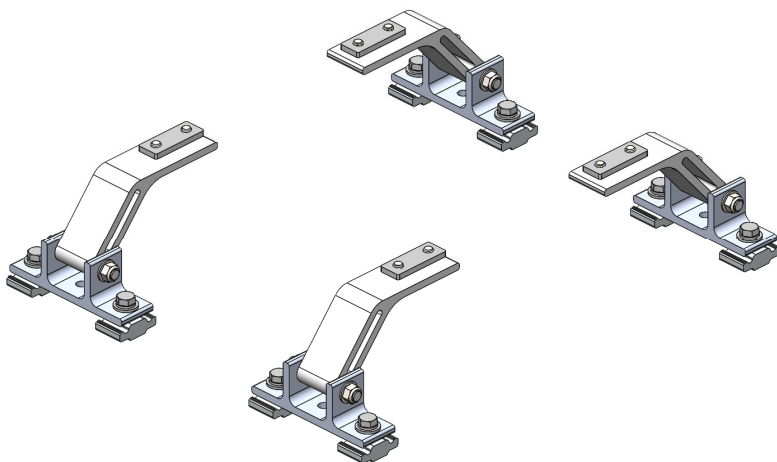




Mounting Bracket Kit, 4-Pack, Black, Multiple Pickups



PRODUCT WEIGHT
4.0 LBS

HEIGHT OFF ROOF
SEE TABLE BELOW

CAPACITY
**REFER TO OEM'S
RECOMMENDED LOAD
RATING**
COLOR

BLACK

CATALOG NUMBER

URMBK4B

PRODUCT FEATURES

Aluminum mounting bracket kit for the PROFILE™ HD Utility, Grip-Lock, and/or ProLift ladder racks. Only works with the OEM specific, Adrian Steel supplied roof rail kit.

Utility and Grip-Lock racks are not recommended for medium or high roof vehicles!

Reference respective OEM specific roof rail kit for more detailed list of compatible accessories.

SEE PAGE 2 FOR APPLICATION NOTES AND ACCESSORIES, OTHER PRODUCTS THAT WORK WITH THIS UNIT.

PAGE 1 of 2

The information contained in this document is the sole property of ADRIAN STEEL COMPANY. ADRIAN STEEL COMPANY retains the right to modify and/or change the product of its design at any time without prior notification.



CATALOG NUMBER URM BK4B

PRODUCT APPLICATION

This product is designed to work with OEM specific rail kit for HD Utility, Grip-Lock, and/or ProLift racks. HD Utility and Grip-Lock racks are not recommended for medium or high roof vehicles!

ACCESSORIES THAT WILL WORK WITH THIS PRODUCT

CATALOG NUMBER	DESCRIPTION	CATALOG NUMBER	DESCRIPTION
RRKFT	Mounting Roof Rail Kit, Transit	RRKNVFSV	Mounting Roof Rail Kit, NV
RRKSP	Mounting Roof Rail Kit, Sprinter	RRKPM	Mounting Roof Rail Kit, ProMaster, 118" WB, 159" WB, 159" WB Extended
RRKPM136WB	Mounting Roof Rail Kit, ProMaster, 136" WB	RRKSBTOP	Mounting Roof Rail Kit, Multiple Pickups
RRKLBTOP	Mounting Roof Rail Kit, Multiple Pickups		

Reference respective OEM specific roof rail kit for more detailed list of compatible accessories.

3/19/2025

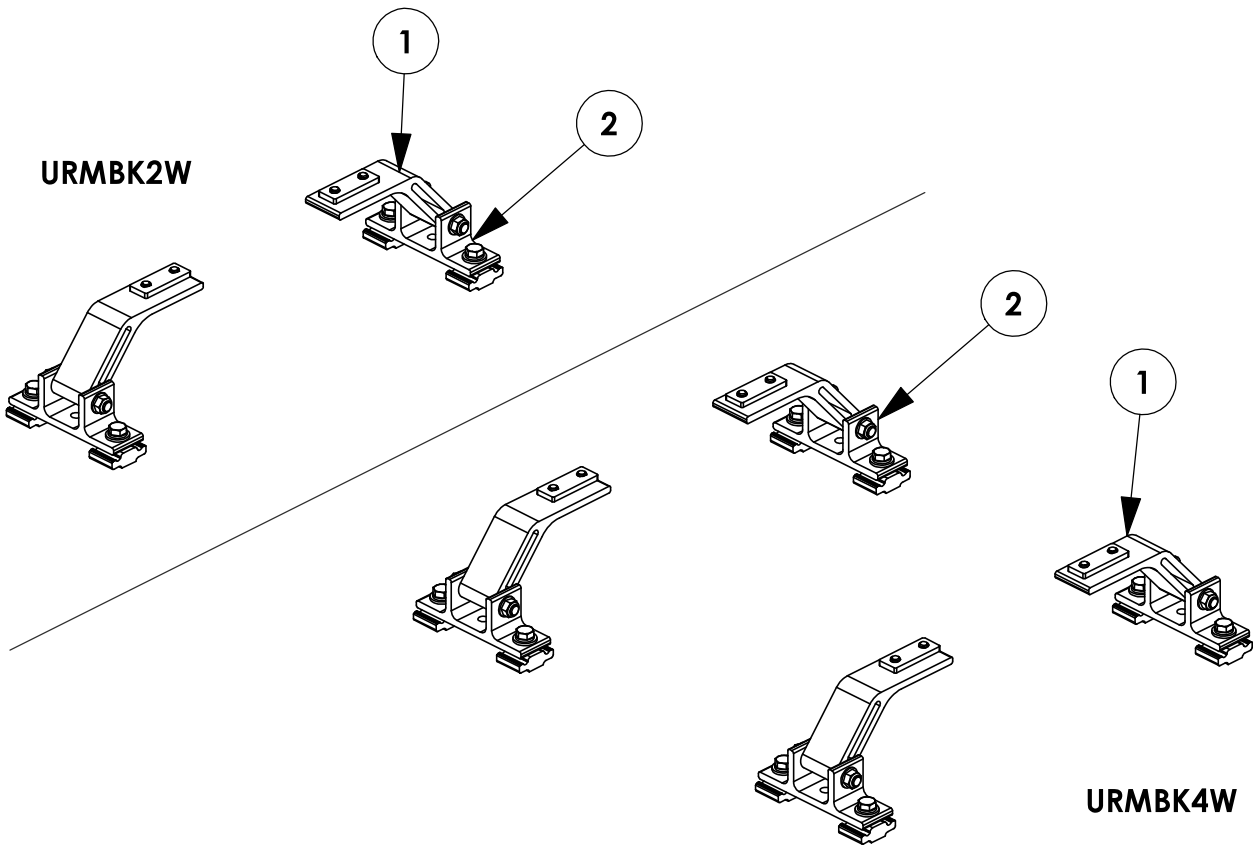
**UPDATED INSTALL POSITION
OF URMBK ON FORD TRANSIT
LOW ROOF IN LINE WITH
DEVIATION #1172 - SEE PAGES
12 AND 13 FOR DETAILS AND
RECOMMENDATIONS. PAGE 2
APPLIES FOR ALL VEHICLE/
ROOF COMBINATIONS.**

INSTR. NUMBER : 66850 PART NUMBER : URGBK PART • DESC. • UTILITY,MNT BKT KT,RAIL	PG: 1	REV: D	ITEM NO.	PART NUMBER	DESCRIPTION	URMBK4W	URMBK2W
			1	65123-W	UTILITY,FT MOUNT ARM,ST,W	4	2
			2	63852-W	UTILITY, MOUNTING BRKT, W	4	2

-PART NUMBERS WITH "-W" SUFFIX ARE PAINTED WHITE
-**FOR BLACK MOUNTING KITS, REPLACE "-W" PARTS WITH "-B" PARTS**

NOTE: THIS INSTRUCTION IS VALID FOR THE FOLLOWING KITS:

- URMBK4W
- URMBK4B
- URMBK2W
- URMBK2B



TOOLS NEEDED:

- DRIVE RATCHET
- IMPACT DRIVER
- 3/16" SOCKET
- 1/2" SOCKET
- 1/2" WRENCH
- TAPE MEASURE

GET TO KNOW THE VEHICLE - AT THE BEGINNING OF ANY INSTALLATION, CHECK THE LOCATION OF THE FUEL TANK, FUEL LINES, BRAKE LINES, HIGH VOLTAGE BATTERIES AND WIRING HARNESSSES TO AVOID INJURY OR PROPERTY DAMAGE FROM TOOL CONTACT.

SEAL ALL EXTERIOR HOLES - ALL INSTALLATION HOLES SHOULD BE SEALED WITH BUTYL TAPE OR SILICON TO PREVENT WATER AND EXHAUST GASES FROM ENTERING THE VEHICLE.

CONTROL DRILL DEPTH - TO AVOID DAMAGE TO THE VEHICLE, USE A DRILL STOP OR CLEARED STEP BIT WHEN DRILLING INSTALLATION HOLES.

ALWAYS ADD PRIMER - WHEN ADDING INSTALLATION HOLES BE SURE TO USE A SELF-ETCHING PRIMER TO PREVENT CORROSION, FASTENER FAILURE AND INJURY.

MOUNTING POINTS MUST HAVE METAL-TO-METAL CONTACT - USE PROVIDED MOUNTING SPACERS TO ACCOMMODATE FOR VEHICLE FEATURES, CARPET OR SUBFLOORS.

PROVIDE CLEARANCE FOR SPACERS - IF THE INSTALLATION VEHICLE CONTAINS A CARPET OR SUBFLOOR, USE A 1-3/16" DIAMETER CARPET CUTTER (P/N: 31183-0) AT ALL MOUNTING LOCATIONS TO OPEN UP ROOM FOR SPACERS.

CHECK SPACER ORIENTATION - BE SURE THAT THE INDENT IN THE SPACER COVERS THE PLUSNUT HEAD; THIS ENSURES THE MOST METAL-TO-METAL CONTACT AND REDUCES VIBRATION.

PLUSNUT INSTALLATION - A PLUSNUT GUN IS RECOMMENDED FOR PLUSNUT INSTALLATION FOR ITS PRODUCTION SPEED. HOWEVER, A PLUSNUT SETTING TOOL CAN ALSO BE USED (P/N: 22200-0).

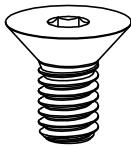
THRU-BOLT CLEARANCE - WHEN USING A THRU-BOLT AT ANY MOUNTING LOCATION, BE SURE THAT YOUR HOLE HAS 1/16" CLEARANCE.

PAGE:

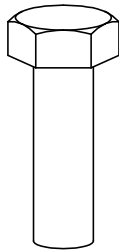
3

FASTENERS AND HARDWARE USED

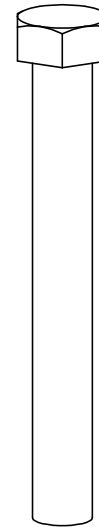
BAG REFERENCE: BAG66848



FAS0858
5/16-18X.63
FHH SCREW
QTY: 8



FAS0597
5/16-18X1.0 SS
HH SCREW
QTY: 8



FAS0243
5/16-18X2.5 SS
HH SCREW
QTY: 4



FAS0857
5/16 SS WASHER,
LOCK EXT CS
QTY: 8



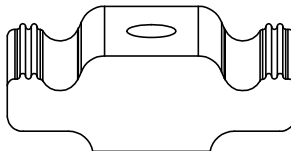
FAS0588
5/16 SS
SPLIT WASHER
QTY: 8



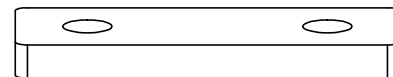
FAS0552
5/16 SS
FLAT WASHER
QTY: 12



FAS0861
5/16-18 SS
HH FLG NUT
QTY: 4



63490
RAIL SLIDE,
1"
QTY: 8



68042
PROFILE FOOT
MOUNTING PLATE
QTY: 4

PAGE INTENTIONALLY LEFT BLANK

STEP 1 - ASSEMBLE MOUNTING ARMS TO CROSSBOW

CHECK TABLE 1-3 IN INSTRUCTION 68895 FOR ADDITIONAL ACCESSORY SLIDE INSTALLATION BEFORE INSTALLING MOUNTING BRACKETS (ALL A.2 ITEMS SHOULD BE COMPLETELY ASSEMBLED FIRST!)

STEP 1.1

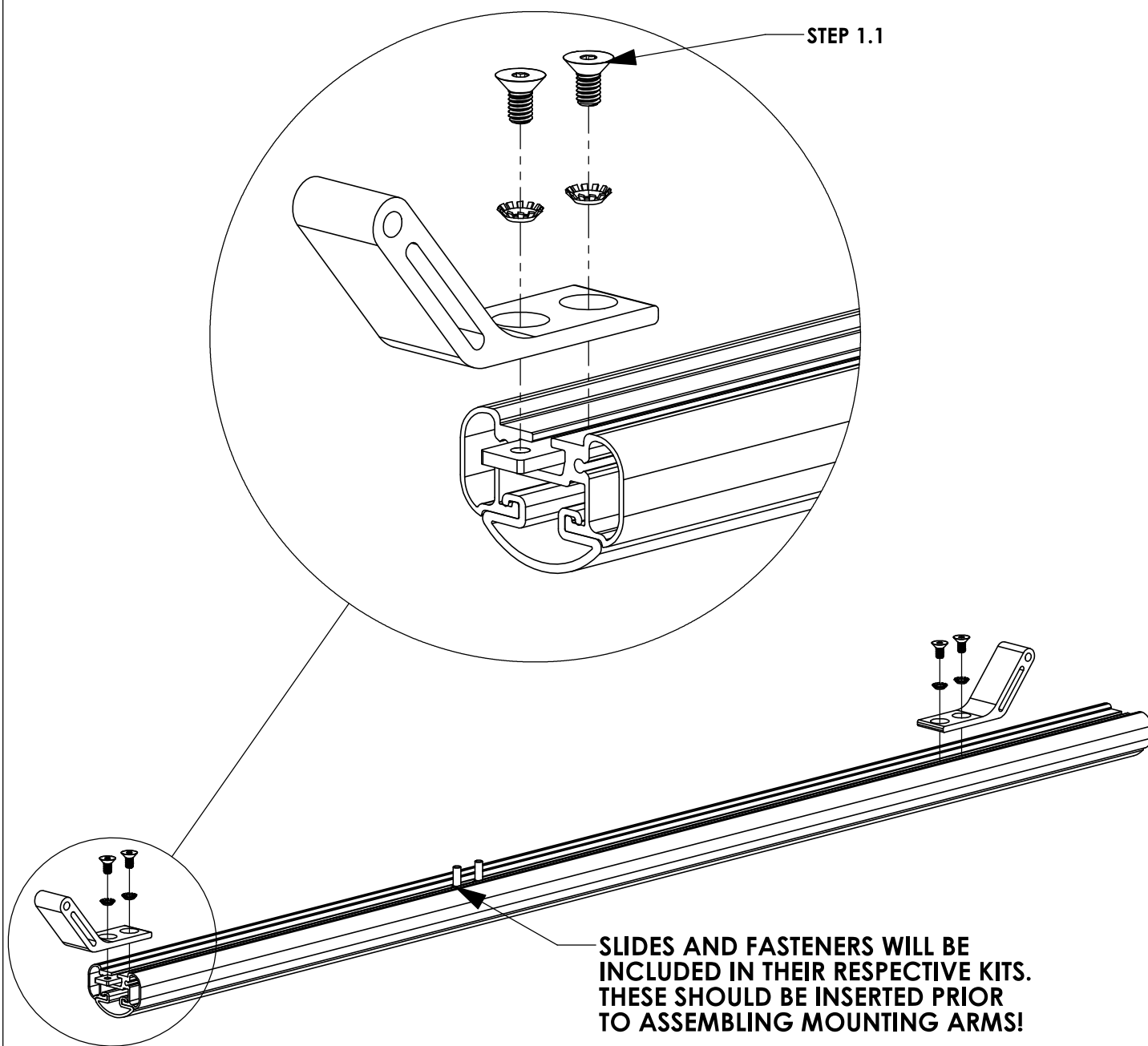
**LOOSELY ASSEMBLE
UNTIL AFTER STEP 3**

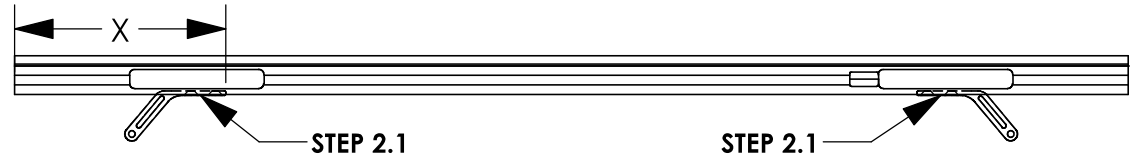
(2) FAS0857, (2)
FAS0858, 68042

(02 PLACES PER
CROSSBOW)
3/16" ALLEN

ATTENTION!

IF INSTALLING A GRIP-LOCK ON A PICKUP TRUCK TOPPER, ASSEMBLE MOUNTING ARMS FACING OUTWARD FOR THAT SIDE OF THE RACK



STEP 2 - SECURE CROSSBOW**STEP 2.1
FULLY TIGHTEN
FROM STEP 1.1****(04 PLACES PER
CROSSBOW)
3/16" ALLEN****FULL SIZE VANS****CENTER CROSSBOW ON MOUNTING BRACKETS****VEHICLE PLATFORM****DIMENSION "X" (in.) -
58" CROSSBOW****DIMENSION "X" (in.) -
68" CROSSBOW****FORD TRANSIT**

6 5/8"

11 5/8"

RAM PROMASTER

6"

11"

NISSAN NV

4 7/8"

9 7/8"

**MERCEDES SPRINTER
(LOW ROOF)**

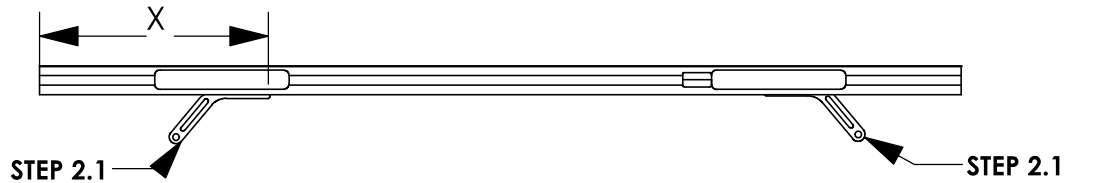
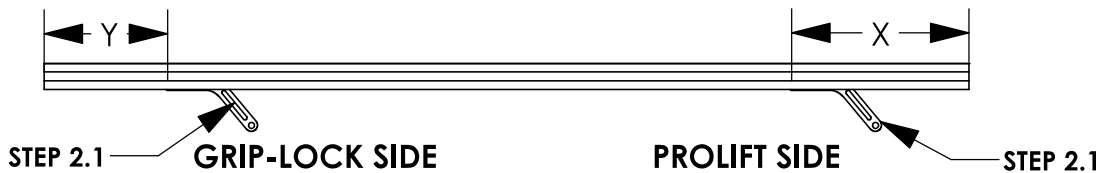
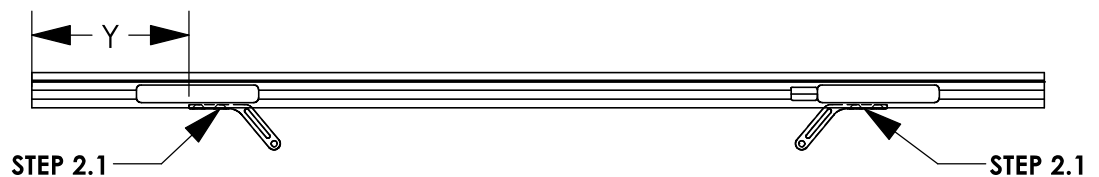
4 5/8"

9 5/8"

**MERCEDES SPRINTER
(HIGH ROOF)**

8 1/8"

13 1/8"

**DIMENSION WILL
VARY BASED ON
ROOF RAIL
PLACEMENT ON
TOPPER****PICKUP TRUCK TOPPERS****FEET ORIENTATION FOR DUAL PROLIFT SHOWN****FEET ORIENTATION FOR COMBO RACK SHOWN****FEET ORIENTATION FOR DUAL GRIP-LOCK SHOWN****MOUNTING FEET
FOR GRIP LOCK SIDE
OF COMBO RACK
WILL FACE
OUTWARD FROM
ROOF CENTERLINE
ON TOPPER****CROSSBOW LENGTH****DIMENSION "X" (in.)
- PROLIFT****DIMENSION "Y" (in.)
- GRIPLOCK****48" (PROLIFT)**

MINIMUM 10 1/8"

N/A

53" (COMBO)

MINIMUM 10 1/8"

MAX 7 1/8"

58" (GRIP-LOCK)

N/A

MAX 7 1/8"

**NOTE - THESE DIMENSIONS ARE APPROXIMATE AND WILL VARY
SLIGHTLY WITH ANY TOLERANCE IN THE BUILD OF THE VEHICLE**

STEP 3 - ASSEMBLE LOWER MOUNTING FOOT TO ROOF RAIL**STEP 3.1****FULLY TIGHTEN**

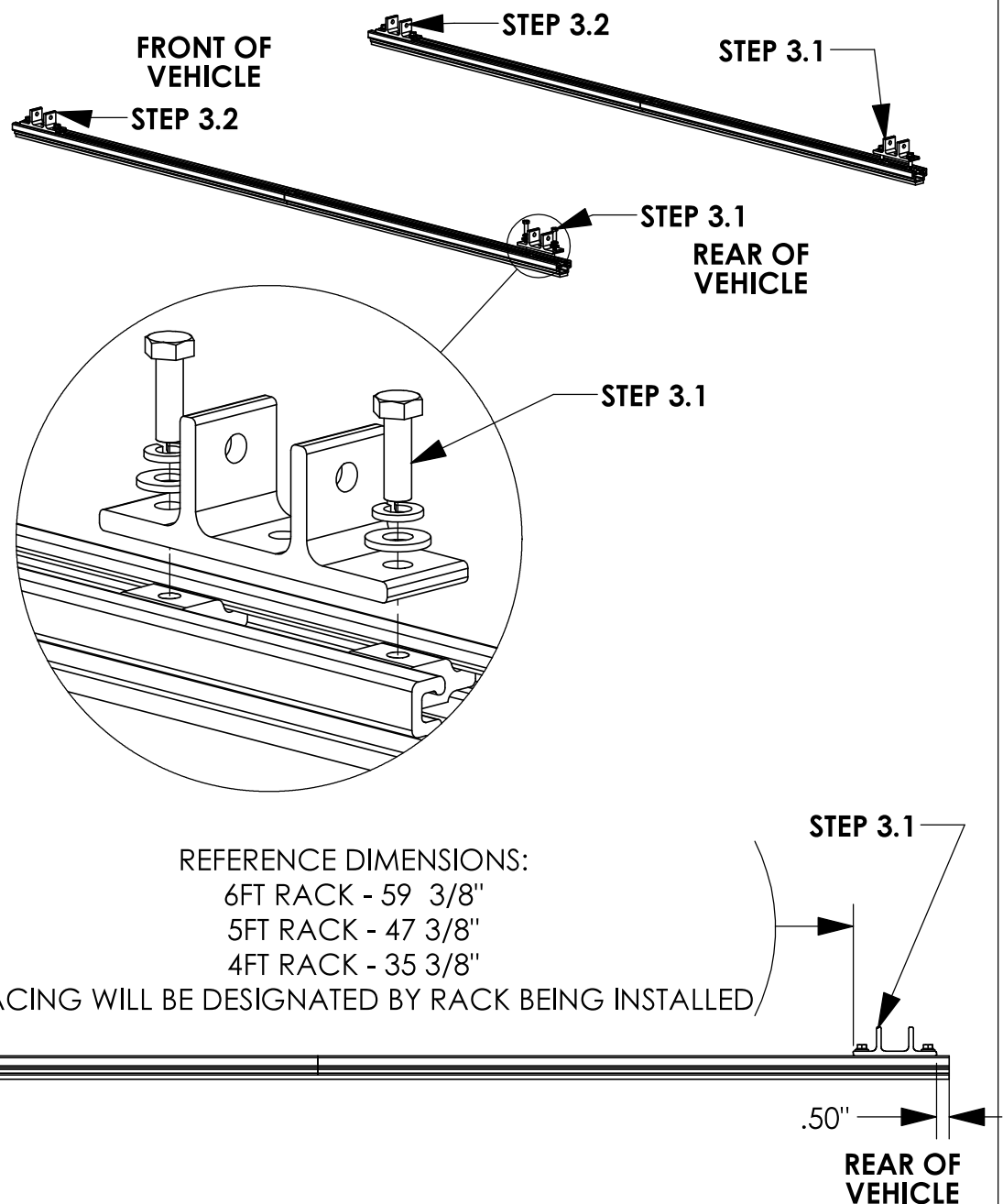
FAS0597, FAS0552,
FAS0588, 63490 ON
REAR MOUNTING FEET

(02 PLACES PER
MOUNTING FOOT)
1/2" SOCKET

STEP 3.2**LEAVE LOOSE UNTIL
AFTER STEP 4**

FAS0597, FAS0552,
FAS0588, 63490 ON
FRONT MOUNTING
FEET

(02 PLACES PER
MOUNTING FOOT)
1/2" SOCKET

**CROSSBOW POSITIONING NOTES:****HD UTILITY RACK -**

REAR CROSSBOW - REARWARD AS POSSIBLE
FRONT CROSSBOW- POSITION TO BEST FIT END USER'S PRODUCT

GRIP LOCK/PROLIFT LADDER RACKS -

1/2" FROM END OF RAIL UNLESS OTHERWISE STATED IN RESPECTIVE
INSTRUCTION FOR CROSSBOW PLACEMENT.

STEP 4 - ASSEMBLE MOUNTING BRACKETS TO MOUNTING ARMS

BEFORE PROCEEDING WITH THIS STEP FINISH ASSEMBLING ACCESSORIES ONTO RACK. (IE GRIP LOCK, PROLIFT, ETC)

STEP 4.1**FULLY TIGHTEN**

FAS0243, FAS0552,
FAS0861

(02 PLACES PER
CROSSBOW)

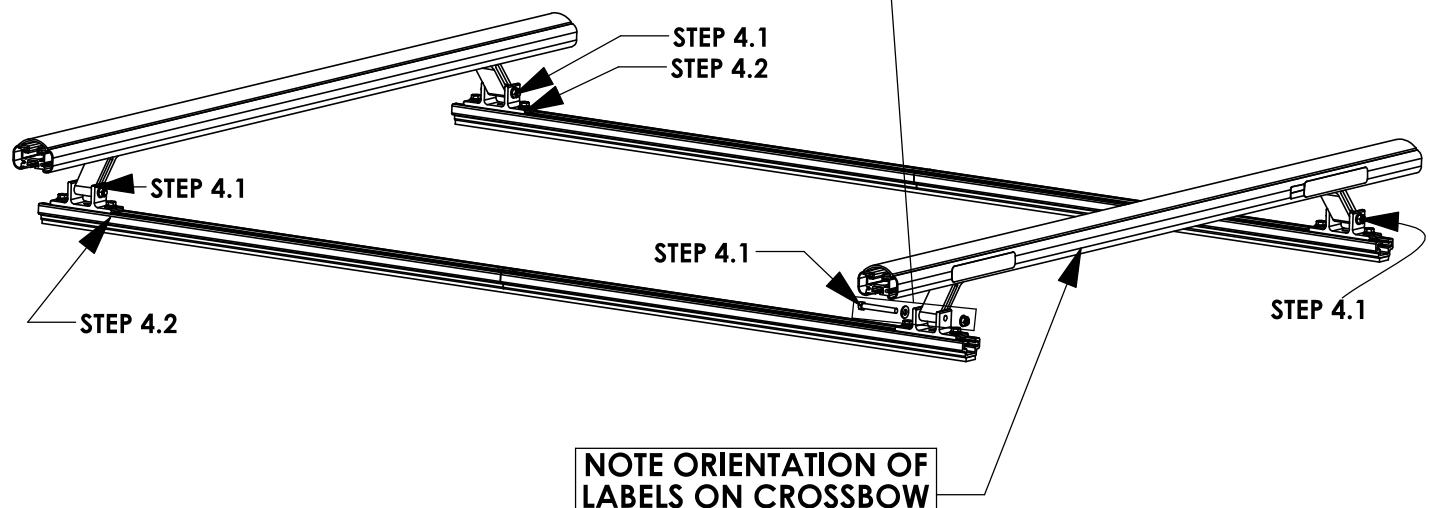
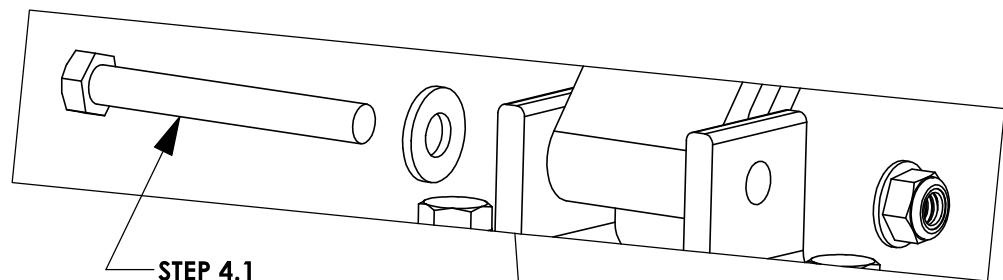
1/2" SOCKET
1/2" WRENCH

STEP 4.2**FULLY TIGHTEN**

FAS0597, FAS0552,
FAS0588, 63490 ON
FRONT MOUNTING
FEET

(02 PLACES PER
MOUNTING FOOT)

1/2" SOCKET



REFERENCE - NO ACCESSORIES SHOWN

STEP 5 - ADJUST MOUNTING BRACKET LOCATION IF NECESSARY

CROSSBOW POSITIONING NOTES:

HD UTILITY RACK -

REAR CROSSBOW - REARWARD AS POSSIBLE

FRONT CROSSBOW- POSITION TO BEST FIT END USER'S PRODUCT

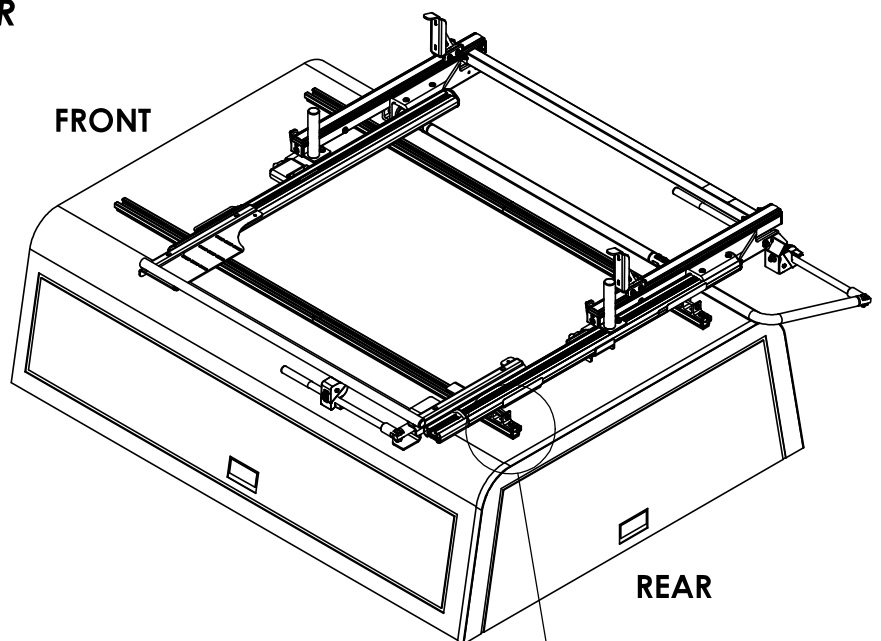
GRIP LOCK/PROLIFT LADDER RACKS -

1/2" FROM END OF RAIL UNLESS OTHERWISE STATED IN RESPECTIVE INSTRUCTION FOR CROSSBOW PLACEMENT.

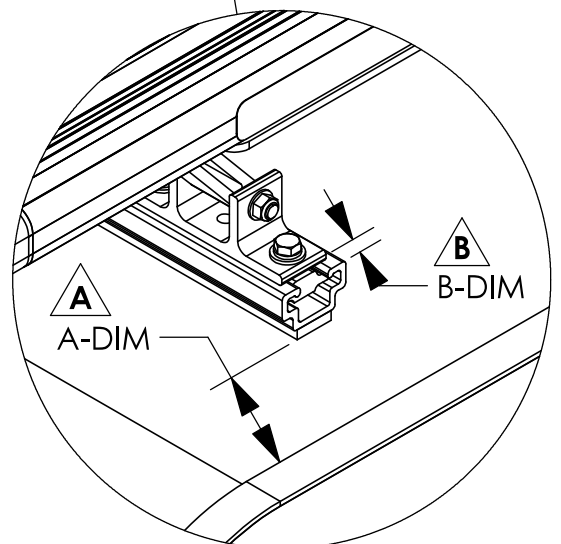
6' ARE TOPPER / 8' LEER TOPPER

A OPTIMAL RAIL KIT POSITION:
TOPPER ROOF RAIL KIT END TO BE
A-DIM FROM BLACK TOPPER TRIM

B UTILITY MOUNTING BRACKET:
REAR MOUNTING BRACKETS WILL
BE B-DIM FROM THE END OF THE
ROOF RAIL KIT



TOPPER/ DIMENSION	6' ARE TOPPER	8' LEER TOPPER
A-DIM	3.00"	1.00"
B-DIM	0.50"	0.50"



NOTE:

IF RAILS HAVE BEEN PREVOIUSLY INSTALLED, LOOSEN TOPPER RAIL BRACKET RAIL SLIDES AND ADJUST TO MEET DESIRED POSITIONING

INSTALLATION IS COMPLETE!! MAKE SURE ALL FASTENERS ARE TIGHTENED

FORD TRANSIT LOW ROOF
POSITION UPDATES PER
DEVIATION #1172 ON NEXT
TWO PAGES

INSTR.
NUMBER : **INS76139**

PG: **1** REV: **A**

TOOLS NEEDED:

- SOCKET WRENCH
(OR 1/2" WRENCH)
- 1/2" SOCKET
- TAPE MEASURE

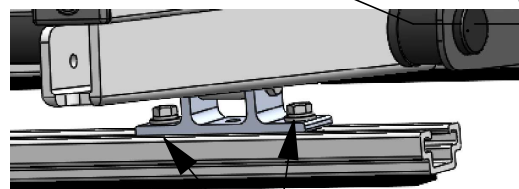
(POWER TOOLS NOT
RECOMMENDED)

ProLift LADDER RACK OPTIMAL ADJUSTMENT INSTRUCTIONS:

STEP 1:



Step 1.1
LOOSEN 5/16"
BOLTS
(2 PLACES, BOTH
REAR CORNERS)
1/2 WRENCH OR
1/2 SOCKET

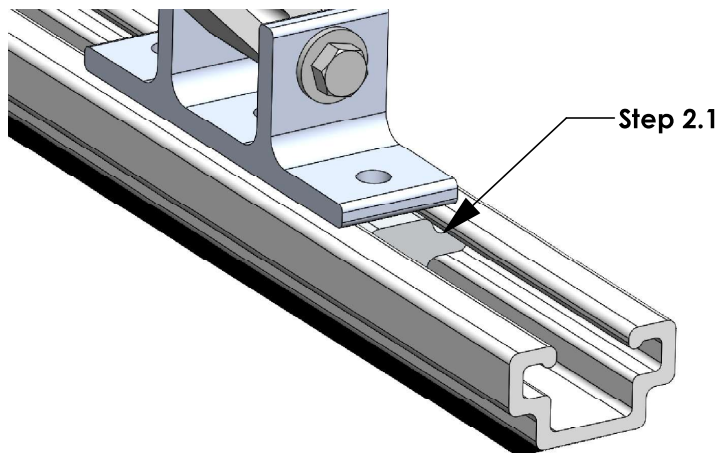


SAVE FASTENERS

Step 1.2
FULLY REMOVE
5/16" BOLTS
AND WASHERS
(2 PLACES, BOTH
FRONT
CORNERS)
1/2 WRENCH OR
1/2 SOCKET

STEP 2 & 3 - CHANGING POSITION OF LADDER RACK

Step 2.1
WITH BOLTS
REMOVED, MOVE
FRONT FOUR SLIDES
(2 PER CORNER) TO
DESIRED LOCATION



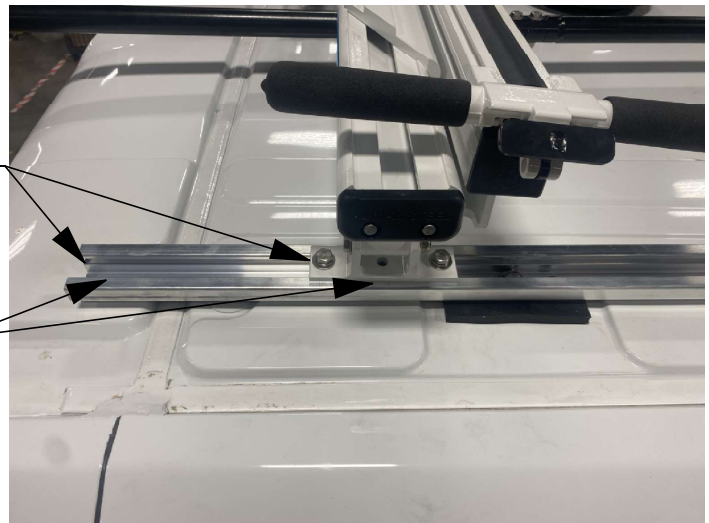
FRONT



BEFORE ADJUSTING
POSITION, CHECK
WIRING TO ENSURE
ELECTRICAL
COMPONENTS DO
NOT INTERFERE WITH
ADJUSTMENT

Step 2.2
ONCE ALL BOLTS
ARE LOOSENED,
SLIDE LADDER
RACK FORWARD
TO DESIRED
LOCATION.
***ALIGN WITH**
FRONT SLIDES*
(CONFIRM WITH
TAPE MEASURE)

7.5"
 Step 2.2



REAR

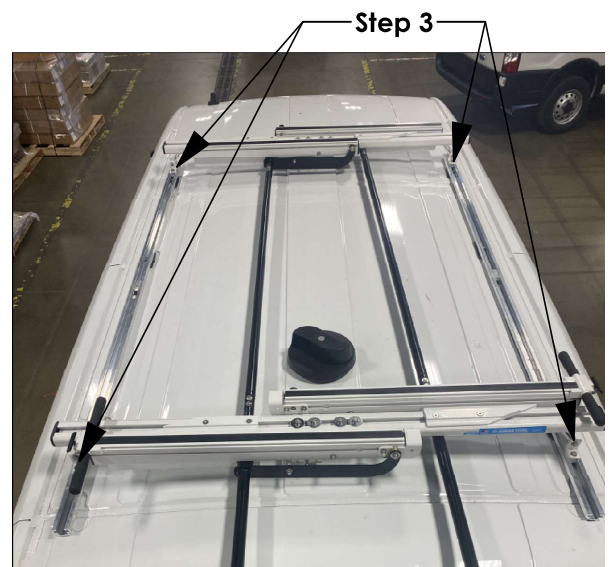
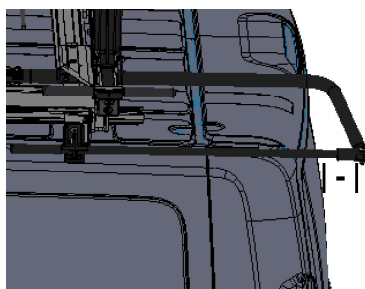
Step 2.3
CHECK
CLEARANCE OF
REAR DROP-
DOWN HANDLE,
(TARGET MINIMUM
CLEARANCE OF 2"
FOR BOTH
HANDLES)



Step 2.3

Step 3
RE-INSERT FRONT
FASTENERS SAVED
FROM STEP 1.2.
FULLY TIGHTEN ALL
BOLTS TO LOCK IN
PLACE.

1/2" SOCKET OR
WRENCH

**ADJUSTMENT COMPLETE**