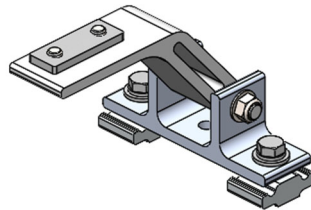
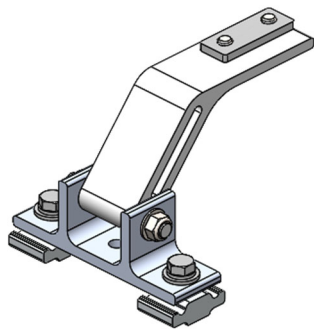




## Mounting Bracket Kit, 2-Pack, White, Multiple Pickups



PRODUCT WEIGHT  
**1.2 LBS**

HEIGHT OFF ROOF  
**SEE TABLE BELOW**

CAPACITY  
**REFER TO OEM'S  
RECOMMENDED LOAD  
RATING**  
COLOR

**WHITE**

CATALOG NUMBER

**URMBK2W**

### PRODUCT FEATURES

**Aluminum mounting bracket kit for the PROFILE™ HD Utility, Grip-Lock, and/or ProLift ladder racks with 3+ Bars. Only works with the OEM specific, Adrian Steel supplied roof rail kit.**

**Utility and Grip-Lock racks are not recommended for medium or high roof vehicles!**

**Reference respective OEM specific roof rail kit for more detailed list of compatible accessories.**

**SEE PAGE 2 FOR APPLICATION NOTES AND ACCESSORIES, OTHER PRODUCTS THAT WORK WITH THIS UNIT.**

### PAGE 1 of 2

The information contained in this document is the sole property of ADRIAN STEEL COMPANY. ADRIAN STEEL COMPANY retains the right to modify and/or change the product of its design at any time without prior notification.



**CATALOG NUMBER      URMBK2W**

**PRODUCT APPLICATION**

**This product is designed to work with OEM specific rail kit for HD Utility, Grip-Lock, and/or ProLift racks. HD Utility and Grip-Lock racks are not recommended for medium or high roof vehicles!**

**ACCESSORIES THAT WILL WORK WITH THIS PRODUCT**

CATALOG NUMBER	DESCRIPTION	CATALOG NUMBER	DESCRIPTION
RRKFT	Mounting Roof Rail Kit, Transit	RRKNVFSV	Mounting Roof Rail Kit, NV
RRKSP	Mounting Roof Rail Kit, Sprinter	RRKPM	Mounting Roof Rail Kit, ProMaster, 118" WB, 159" WB, 159" WB Extended
RRKPM136WB	Mounting Roof Rail Kit, ProMaster, 136" WB	RRKSBTOP	Mounting Roof Rail Kit, Multiple Pickups
RRKLBTOP	Mounting Roof Rail Kit, Multiple Pickups		

**Reference respective OEM specific roof rail kit for more detailed list of compatible accessories.**

**3/19/2025**

**UPDATED INSTALL POSITION  
OF URMBK ON FORD TRANSIT  
LOW ROOF IN LINE WITH  
DEVIATION #1172 - SEE PAGES  
12 AND 13 FOR DETAILS AND  
RECOMMENDATIONS. PAGE 2  
APPLIES FOR ALL VEHICLE/  
ROOF COMBINATIONS.**

INSTR. NUMBER : <b>66850</b>	PG: <b>1</b>	REV: <b>D</b>	ITEM NO.	PART NUMBER	DESCRIPTION	URMBK4W	URMBK2W
			1	65123-W	UTILITY,FT MOUNT ARM,ST,W	4	2
			2	63852-W	UTILITY, MOUNTING BRKT, W	4	2

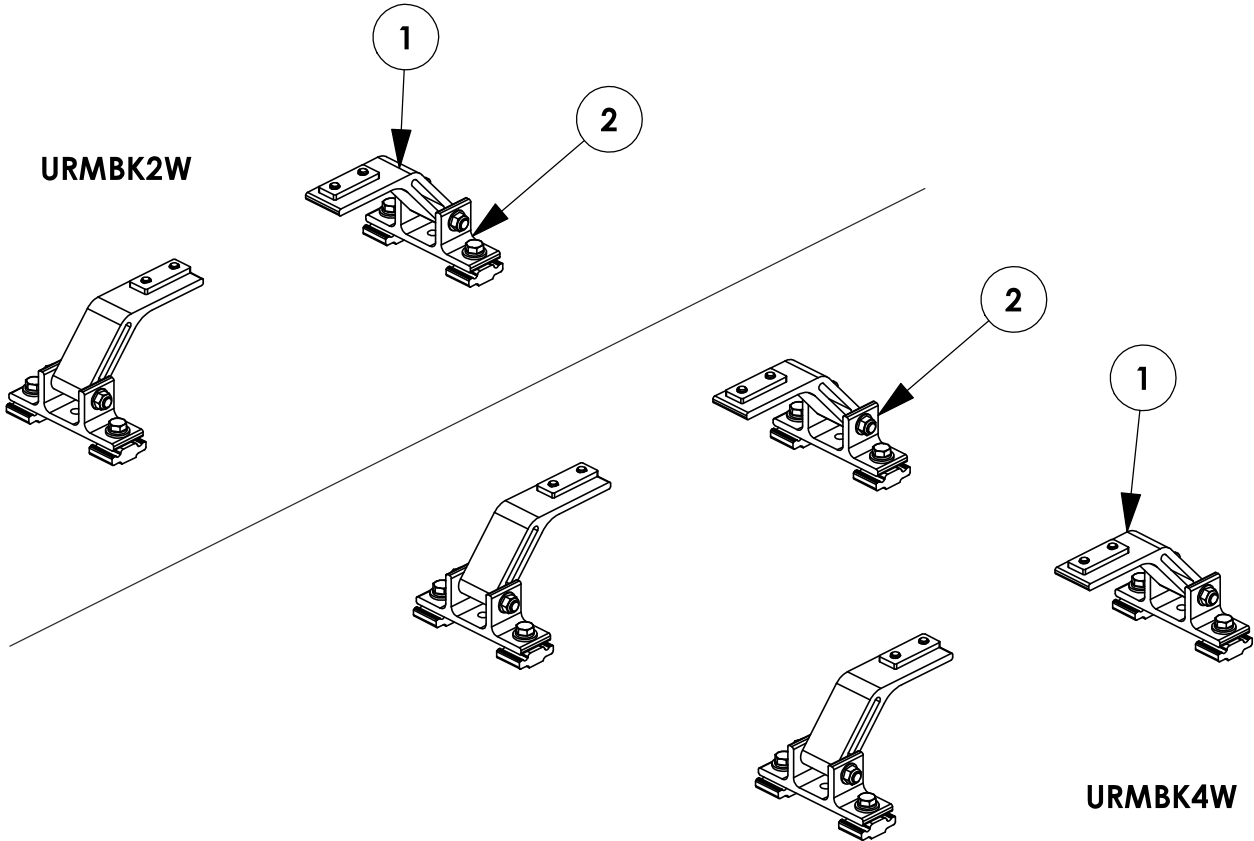
PART  
NUMBER : **URMBK**

PART  
DESC. : UTILITY,MNT BKT KT,RAIL

**-PART NUMBERS WITH "-W" SUFFIX ARE PAINTED WHITE**  
**-FOR BLACK MOUNTING KITS, REPLACE "-W" PARTS**  
**WITH "-B" PARTS**

**NOTE: THIS INSTRUCTION IS  
VALID FOR THE FOLLOWING  
KITS:**

- URMBK4W
- URMBK4B
- URMBK2W
- URMBK2B



**TOOLS NEEDED:**

- DRIVE RATCHET
- IMPACT DRIVER
- 3/16" SOCKET
- 1/2" SOCKET
- 1/2" WRENCH
- TAPE MEASURE

**GET TO KNOW THE VEHICLE** - AT THE BEGINNING OF ANY INSTALLATION, CHECK THE LOCATION OF THE FUEL TANK, FUEL LINES, BRAKE LINES, HIGH VOLTAGE BATTERIES AND WIRING HARNESSSES TO AVOID INJURY OR PROPERTY DAMAGE FROM TOOL CONTACT.

**SEAL ALL EXTERIOR HOLES** - ALL INSTALLATION HOLES SHOULD BE SEALED WITH BUTYL TAPE OR SILICON TO PREVENT WATER AND EXHAUST GASES FROM ENTERING THE VEHICLE.

**CONTROL DRILL DEPTH** - TO AVOID DAMAGE TO THE VEHICLE, USE A DRILL STOP OR CLEARED STEP BIT WHEN DRILLING INSTALLATION HOLES.

**ALWAYS ADD PRIMER** - WHEN ADDING INSTALLATION HOLES BE SURE TO USE A SELF-ETCHING PRIMER TO PREVENT CORROSION, FASTENER FAILURE AND INJURY.

**MOUNTING POINTS MUST HAVE METAL-TO-METAL CONTACT** - USE PROVIDED MOUNTING SPACERS TO ACCOMMODATE FOR VEHICLE FEATURES, CARPET OR SUBFLOORS.

**PROVIDE CLEARANCE FOR SPACERS** - IF THE INSTALLATION VEHICLE CONTAINS A CARPET OR SUBFLOOR, USE A 1-3/16" DIAMETER CARPET CUTTER (P/N: 31183-0) AT ALL MOUNTING LOCATIONS TO OPEN UP ROOM FOR SPACERS.

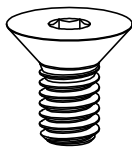
**CHECK SPACER ORIENTATION** - BE SURE THAT THE INDENT IN THE SPACER COVERS THE PLUSNUT HEAD; THIS ENSURES THE MOST METAL-TO-METAL CONTACT AND REDUCES VIBRATION.

**PLUSNUT INSTALLATION** - A PLUSNUT GUN IS RECOMMENDED FOR PLUSNUT INSTALLATION FOR ITS PRODUCTION SPEED. HOWEVER, A PLUSNUT SETTING TOOL CAN ALSO BE USED (P/N: 22200-0).

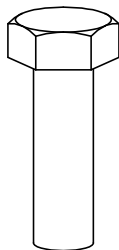
**THRU-BOLT CLEARANCE** - WHEN USING A THRU-BOLT AT ANY MOUNTING LOCATION, BE SURE THAT YOUR HOLE HAS 1/16" CLEARANCE.

**FASTENERS AND HARDWARE USED**

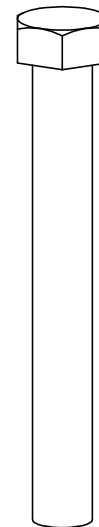
**BAG REFERENCE: BAG66848**



**FAS0858**  
**5/16-18X.63**  
**FHH SCREW**  
**QTY: 8**



**FAS0597**  
**5/16-18X1.0 SS**  
**HH SCREW**  
**QTY: 8**



**FAS0243**  
**5/16-18X2.5 SS**  
**HH SCREW**  
**QTY: 4**



**FAS0857**  
**5/16 SS WASHER,**  
**LOCK EXT CS**  
**QTY: 8**



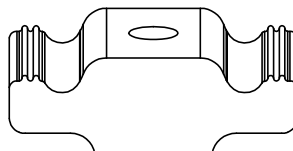
**FAS0588**  
**5/16 SS**  
**SPLIT WASHER**  
**QTY: 8**



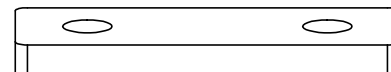
**FAS0552**  
**5/16 SS**  
**FLAT WASHER**  
**QTY: 12**



**FAS0861**  
**5/16-18 SS**  
**HH FLG NUT**  
**QTY: 4**



**63490**  
**RAIL SLIDE,**  
**1"**  
**QTY: 8**



**68042**  
**PROFILE FOOT**  
**MOUNTING PLATE**  
**QTY: 4**

**PAGE INTENTIONALLY LEFT BLANK**

**STEP 1 - ASSEMBLE MOUNTING ARMS TO CROSSBOW**

CHECK TABLE 1-3 IN INSTRUCTION 68895 FOR ADDITIONAL ACCESSORY SLIDE INSTALLATION BEFORE INSTALLING MOUNTING BRACKETS (ALL A.2 ITEMS SHOULD BE COMPLETELY ASSEMBLED FIRST!)

**STEP 1.1**

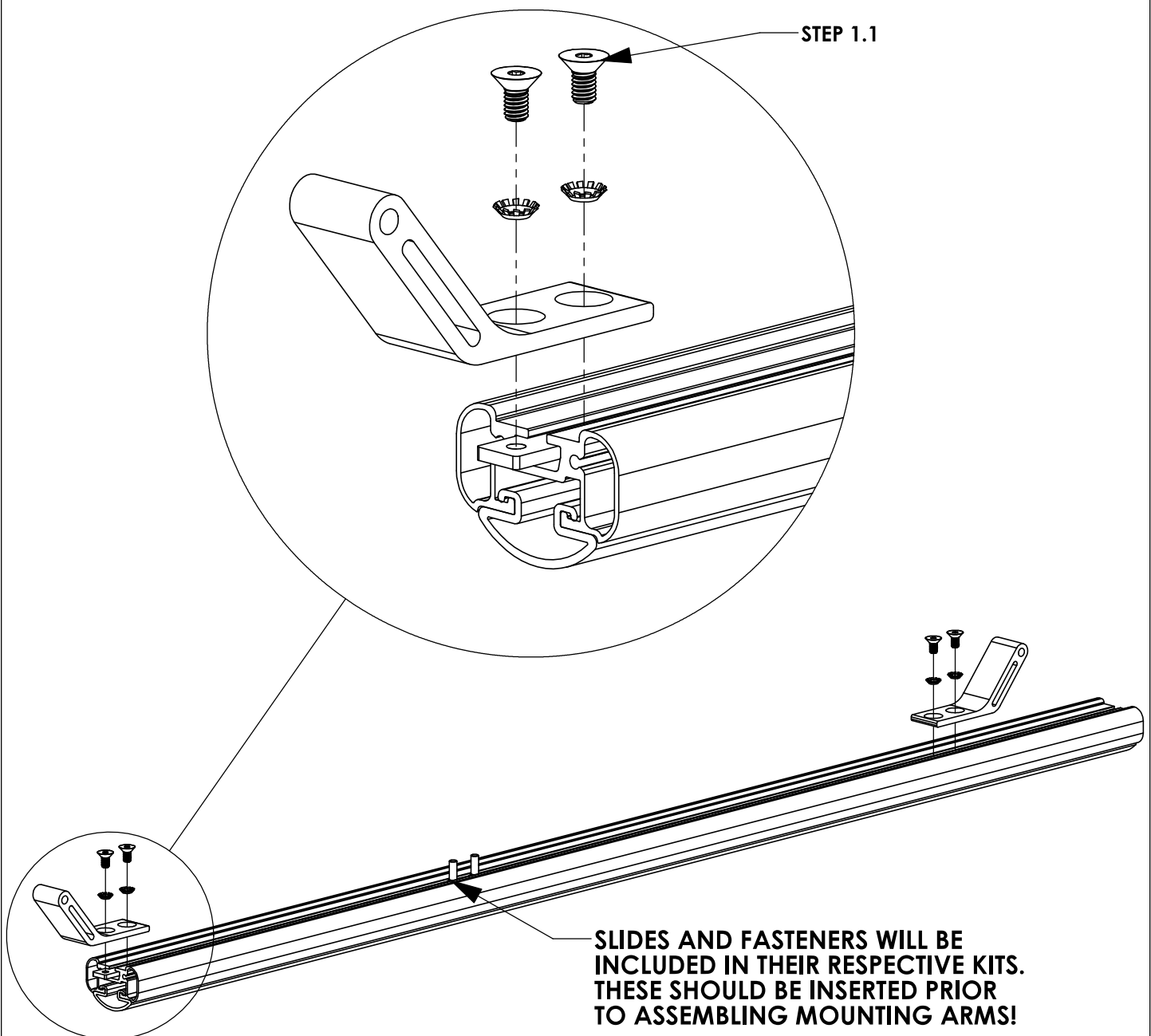
**LOOSELY ASSEMBLE  
UNTIL AFTER STEP 3**

(2) FAS0857, (2)  
FAS0858, 68042

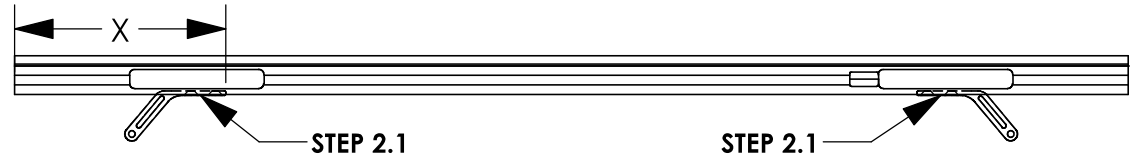
(02 PLACES PER  
CROSSBOW)  
3/16" ALLEN

**ATTENTION!**

IF INSTALLING A GRIP-LOCK ON A PICKUP TRUCK TOPPER, ASSEMBLE MOUNTING ARMS FACING OUTWARD FOR THAT SIDE OF THE RACK





**STEP 2 - SECURE CROSSBOW****STEP 2.1  
FULLY TIGHTEN  
FROM STEP 1.1****(04 PLACES PER  
CROSSBOW)  
3/16" ALLEN****FULL SIZE VANS****CENTER CROSSBOW ON MOUNTING BRACKETS****VEHICLE PLATFORM****DIMENSION "X" (in.) -  
58" CROSSBOW****DIMENSION "X" (in.) -  
68" CROSSBOW****FORD TRANSIT**

6 5/8"

11 5/8"

**RAM PROMASTER**

6"

11"

**NISSAN NV**

4 7/8"

9 7/8"

**MERCEDES SPRINTER  
(LOW ROOF)**

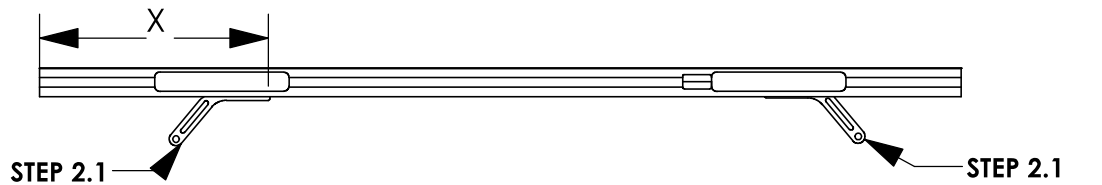
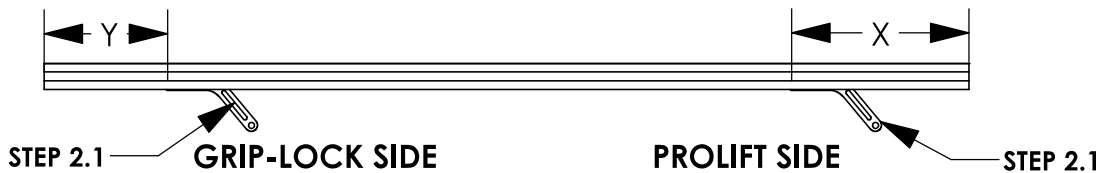
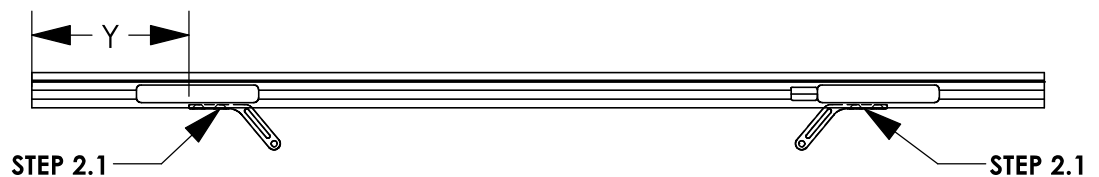
4 5/8"

9 5/8"

**MERCEDES SPRINTER  
(HIGH ROOF)**

8 1/8"

13 1/8"

**DIMENSION WILL  
VARY BASED ON  
ROOF RAIL  
PLACEMENT ON  
TOPPER****PICKUP TRUCK TOPPERS****FEET ORIENTATION FOR DUAL PROLIFT SHOWN****FEET ORIENTATION FOR COMBO RACK SHOWN****FEET ORIENTATION FOR DUAL GRIP-LOCK SHOWN****MOUNTING FEET  
FOR GRIP LOCK SIDE  
OF COMBO RACK  
WILL FACE  
OUTWARD FROM  
ROOF CENTERLINE  
ON TOPPER****CROSSBOW LENGTH****DIMENSION "X" (in.)  
- PROLIFT****DIMENSION "Y" (in.)  
- GRIPLOCK****48" (PROLIFT)**

MINIMUM 10 1/8"

N/A

**53" (COMBO)**

MINIMUM 10 1/8"

MAX 7 1/8"

**58" (GRIP-LOCK)**

N/A

MAX 7 1/8"

**NOTE - THESE DIMENSIONS ARE APPROXIMATE AND WILL VARY  
SLIGHTLY WITH ANY TOLERANCE IN THE BUILD OF THE VEHICLE**

**STEP 3 - ASSEMBLE LOWER MOUNTING FOOT TO ROOF RAIL****STEP 3.1****FULLY TIGHTEN**

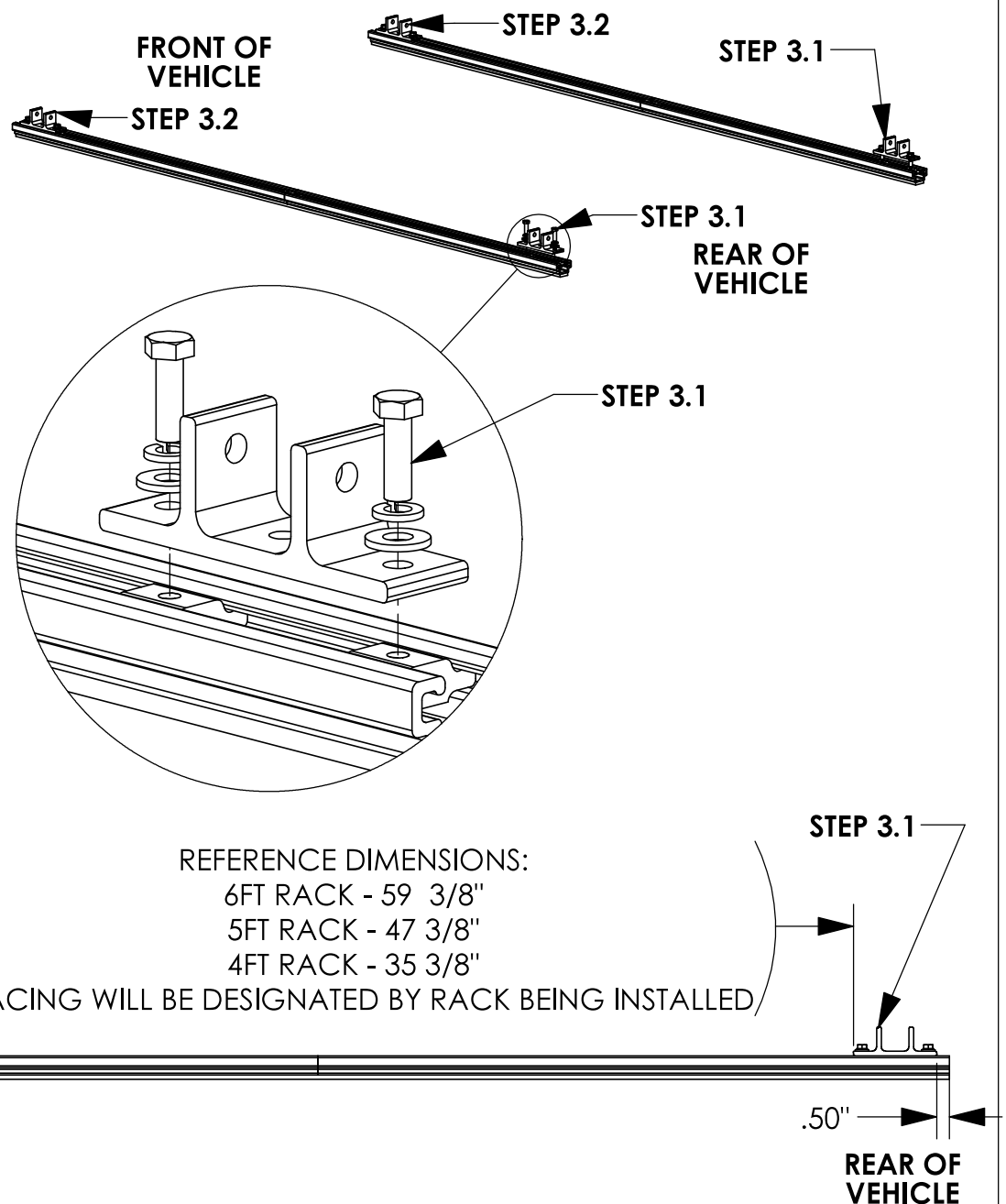
FAS0597, FAS0552,  
FAS0588, 63490 ON  
REAR MOUNTING FEET

(02 PLACES PER  
MOUNTING FOOT)  
1/2" SOCKET

**STEP 3.2****LEAVE LOOSE UNTIL  
AFTER STEP 4**

FAS0597, FAS0552,  
FAS0588, 63490 ON  
FRONT MOUNTING  
FEET

(02 PLACES PER  
MOUNTING FOOT)  
1/2" SOCKET

**CROSSBOW POSITIONING NOTES:****HD UTILITY RACK -**

REAR CROSSBOW - REARWARD AS POSSIBLE

FRONT CROSSBOW- POSITION TO BEST FIT END USER'S PRODUCT

**GRIP LOCK/PROLIFT LADDER RACKS -**

1/2" FROM END OF RAIL UNLESS OTHERWISE STATED IN RESPECTIVE  
INSTRUCTION FOR CROSSBOW PLACEMENT.

**STEP 4 - ASSEMBLE MOUNTING BRACKETS TO MOUNTING ARMS**

**BEFORE PROCEEDING WITH THIS STEP FINISH ASSEMBLING ACCESSORIES ONTO RACK. (IE GRIP LOCK, PROLIFT, ETC)**

**STEP 4.1****FULLY TIGHTEN**

FAS0243, FAS0552,  
FAS0861

(02 PLACES PER  
CROSSBOW)

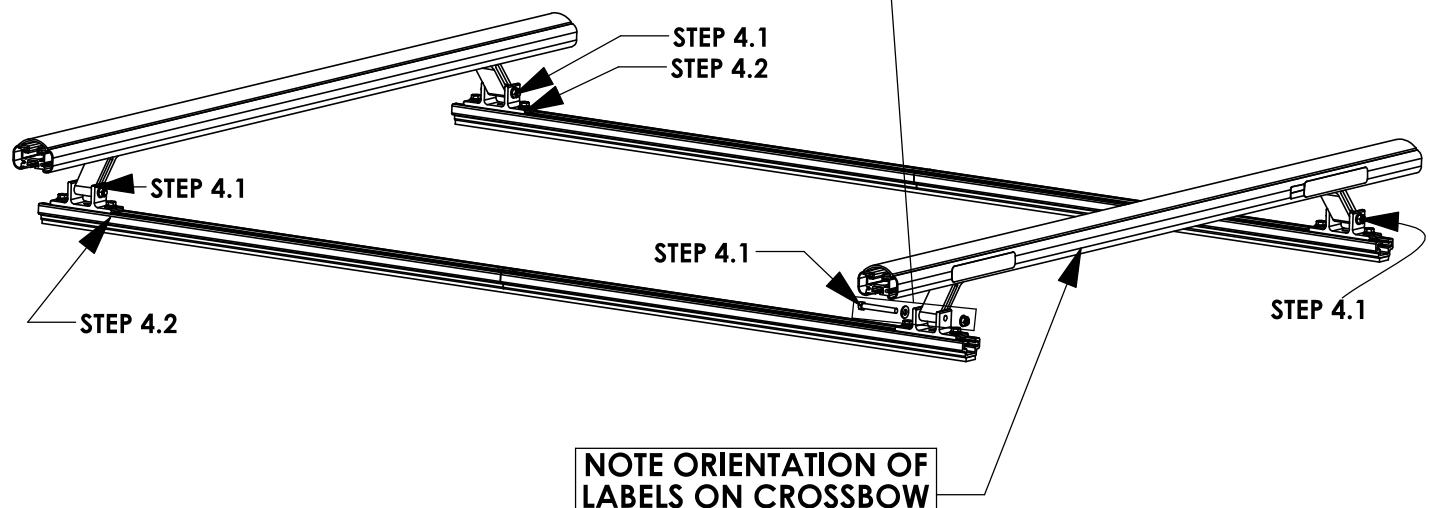
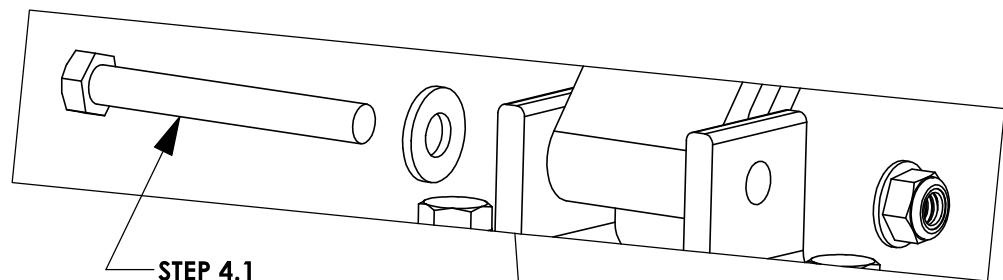
1/2" SOCKET  
1/2" WRENCH

**STEP 4.2****FULLY TIGHTEN**

FAS0597, FAS0552,  
FAS0588, 63490 ON  
FRONT MOUNTING  
FEET

(02 PLACES PER  
MOUNTING FOOT)

1/2" SOCKET



REFERENCE - NO ACCESSORIES SHOWN

## STEP 5 - ADJUST MOUNTING BRACKET LOCATION IF NECESSARY

### CROSSBOW POSITIONING NOTES:

#### HD UTILITY RACK -

REAR CROSSBOW - REARWARD AS POSSIBLE

FRONT CROSSBOW- POSITION TO BEST FIT END USER'S PRODUCT

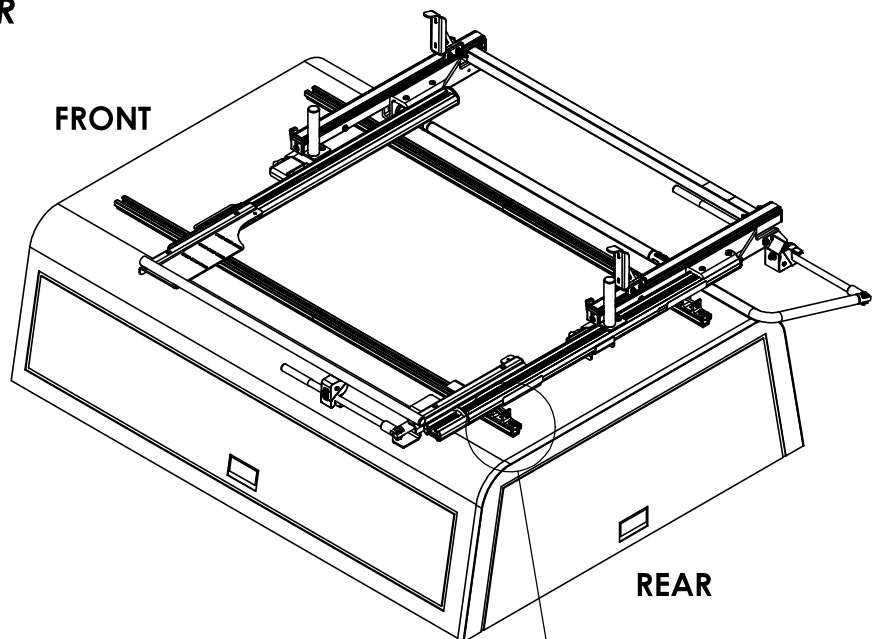
#### GRIP LOCK/PROLIFT LADDER RACKS -

1/2" FROM END OF RAIL UNLESS OTHERWISE STATED IN RESPECTIVE INSTRUCTION FOR CROSSBOW PLACEMENT.

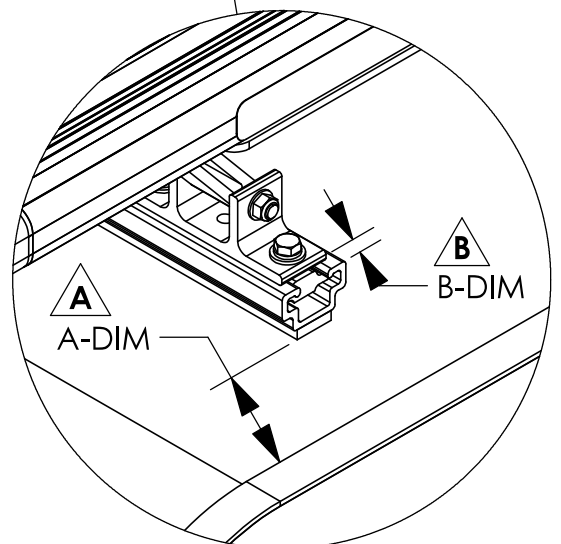
### 6' ARE TOPPER / 8' LEER TOPPER

**A** OPTIMAL RAIL KIT POSITION:  
TOPPER ROOF RAIL KIT END TO BE  
A-DIM FROM BLACK TOPPER TRIM

**B** UTILITY MOUNTING BRACKET:  
REAR MOUNTING BRACKETS WILL  
BE B-DIM FROM THE END OF THE  
ROOF RAIL KIT



TOPPER/ DIMENSION	6' ARE TOPPER	8' LEER TOPPER
A-DIM	3.00"	1.00"
B-DIM	0.50"	0.50"



#### NOTE:

IF RAILS HAVE BEEN PREVOIUSLY INSTALLED, LOOSEN TOPPER RAIL BRACKET RAIL SLIDES AND ADJUST TO MEET DESIRED POSITIONING

INSTALLATION IS COMPLETE!! MAKE SURE ALL FASTENERS ARE TIGHTENED

**FORD TRANSIT LOW ROOF**  
**POSITION UPDATES PER**  
**DEVIATION #1172 ON NEXT**  
**TWO PAGES**

INSTR.  
NUMBER

: INS76139

PG:

1

REV:

A

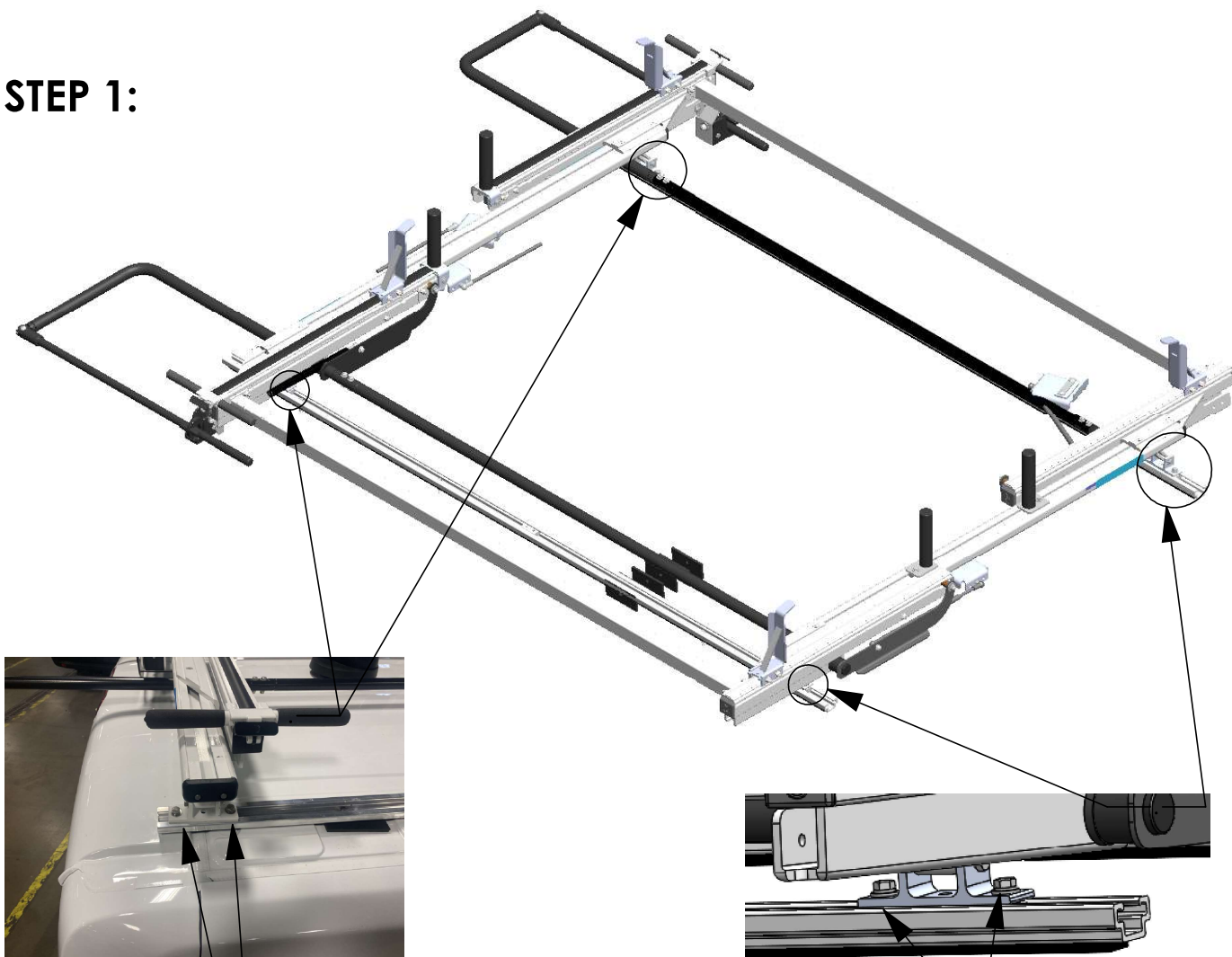
#### TOOLS NEEDED:

- SOCKET WRENCH  
(OR 1/2" WRENCH)
- 1/2" SOCKET
- TAPE MEASURE

(POWER TOOLS NOT  
RECOMMENDED)

## ProLift LADDER RACK OPTIMAL ADJUSTMENT INSTRUCTIONS:

### STEP 1:



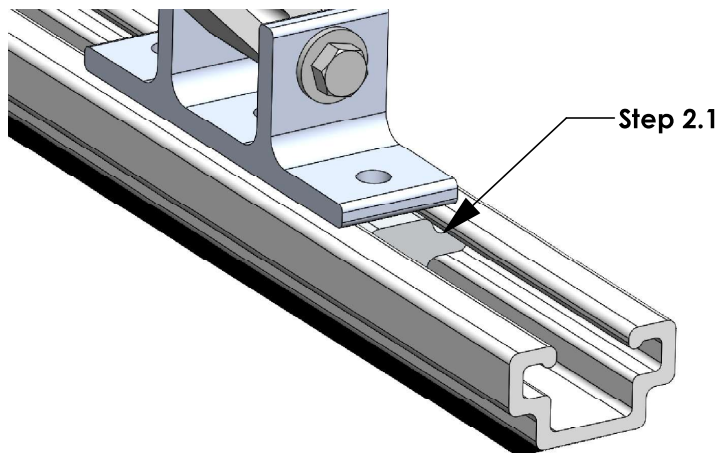
Step 1.1  
LOOSEN 5/16"  
BOLTS  
(2 PLACES, BOTH  
REAR CORNERS)  
1/2 WRENCH OR  
1/2 SOCKET

SAVE FASTENERS

Step 1.2  
FULLY REMOVE  
5/16" BOLTS  
AND WASHERS  
(2 PLACES, BOTH  
FRONT  
CORNERS)  
1/2 WRENCH OR  
1/2 SOCKET

**STEP 2 & 3 - CHANGING POSITION OF LADDER RACK**

**Step 2.1**  
**WITH BOLTS**  
**REMOVED, MOVE**  
**FRONT FOUR SLIDES**  
**(2 PER CORNER) TO**  
**DESIRED LOCATION**



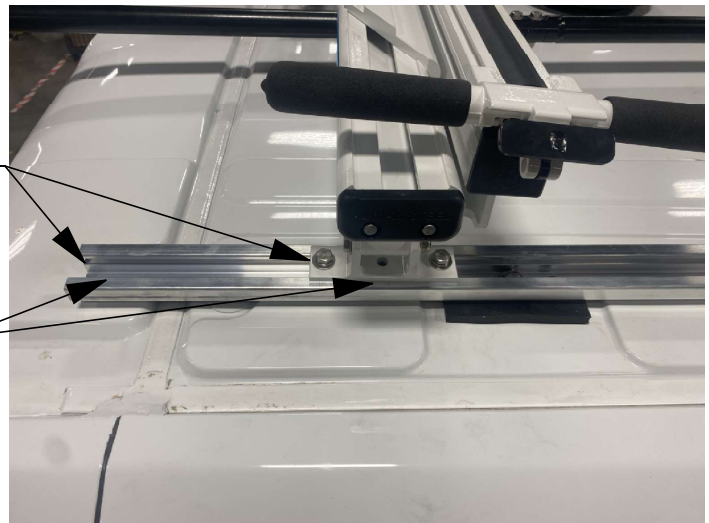
FRONT



**BEFORE ADJUSTING**  
**POSITION, CHECK**  
**WIRING TO ENSURE**  
**ELECTRICAL**  
**COMPONENTS DO**  
**NOT INTERFERE WITH**  
**ADJUSTMENT**

**Step 2.2**  
**ONCE ALL BOLTS**  
**ARE LOOSENED,**  
**SLIDE LADDER**  
**RACK FORWARD**  
**TO DESIRED**  
**LOCATION.**  
**\*ALIGN WITH**  
**FRONT SLIDES\***  
**(CONFIRM WITH**  
**TAPE MEASURE)**

7.5"  
 Step 2.2



REAR

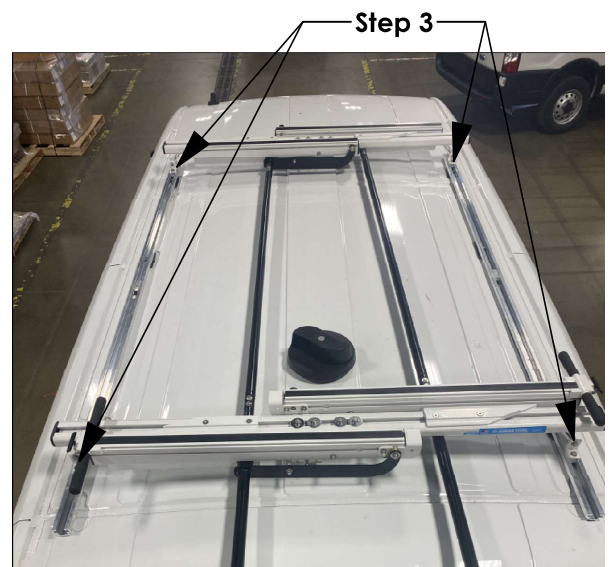
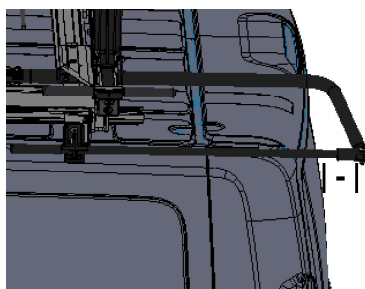
**Step 2.3**  
**CHECK**  
**CLEARANCE OF**  
**REAR DROP-**  
**DOWN HANDLE,**  
**(TARGET MINIMUM**  
**CLEARANCE OF 2"**  
**FOR BOTH**  
**HANDLES)**



Step 2.3

**Step 3**  
**RE-INSERT FRONT**  
**FASTENERS SAVED**  
**FROM STEP 1.2.**  
**FULLY TIGHTEN ALL**  
**BOLTS TO LOCK IN**  
**PLACE.**

**1/2" SOCKET OR**  
**WRENCH**

**ADJUSTMENT COMPLETE**