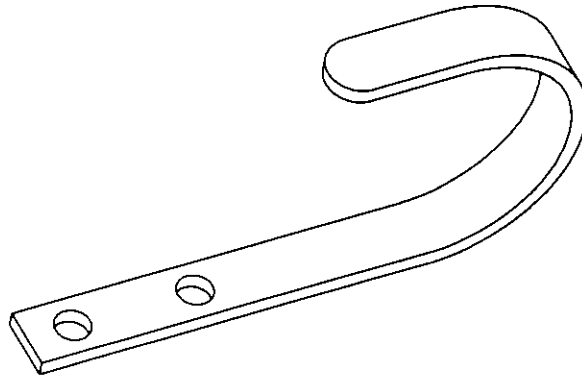
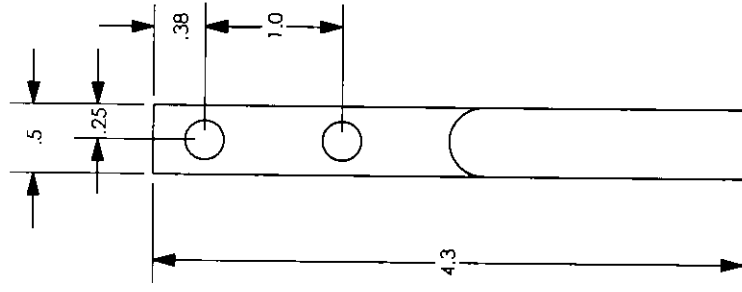


- INSTALLATION FASTENERS**
 (2) 1/4-20 HEX FLANGE NUT
 (2) 1/4-20 X 1/2 THP SCW.
 (2) #14 X 3/4 "A" THP SCW.
 (2) 1/4 EXT. TOOTH L'WASHER



906 JAMES ST.
 ADRIAN, MI. 49221
 (517) 265-6194

**THIS DRAWING IS THE PROPERTY OF
 ADRIAN STEEL Co.**
 THIS DRAWING IS NOT TO BE USED IN ANY
 MANNER DETRIMENTAL TO THE INTERESTS
 OF ADRIAN STEEL Co.

RELEASED CHK'D: RLS
 EN-6071 6/25/02 BDS

REVISED CHK'D: RLS
 EN-6625 5/14/03 APG

Description:
 Removed Notes
 Changed Description

REVISED CHK'D: JLC
 EN-7156 2/4/04 BDS

Description:
 Redrawn in SolidWorks

**STANDARD TOLERANCES
 UNLESS OTHERWISE NOTED:**

- 0.0 = ± .125
- 0.00 = ± .062
- 0.000 = ± .031
- 0° = ± 2°
- 0.0° = ± 1°

Material Thickness = per AISI
 Notches, Slots, Holes = ± .015

MATERIAL: .125 bar stock
 Area (Sq.Ft.): .7 ft
 Weight (lbs.): 0.65

FINISH: Gray Pwd.Ct.
 Coverage (Sq.Ft.): 0.3
 Weight (lbs.): 0.0008

DESIGNED BY: BDS
 DRAWN BY: BDS
 CHECKED BY: JLC

SCALE: 3:4
 DATE: 1/23/04
 Part Description

Accessory Hook
 ()

Size: A
 SHEET 1 of 2
 Part Number

Issue
A-UH25
A