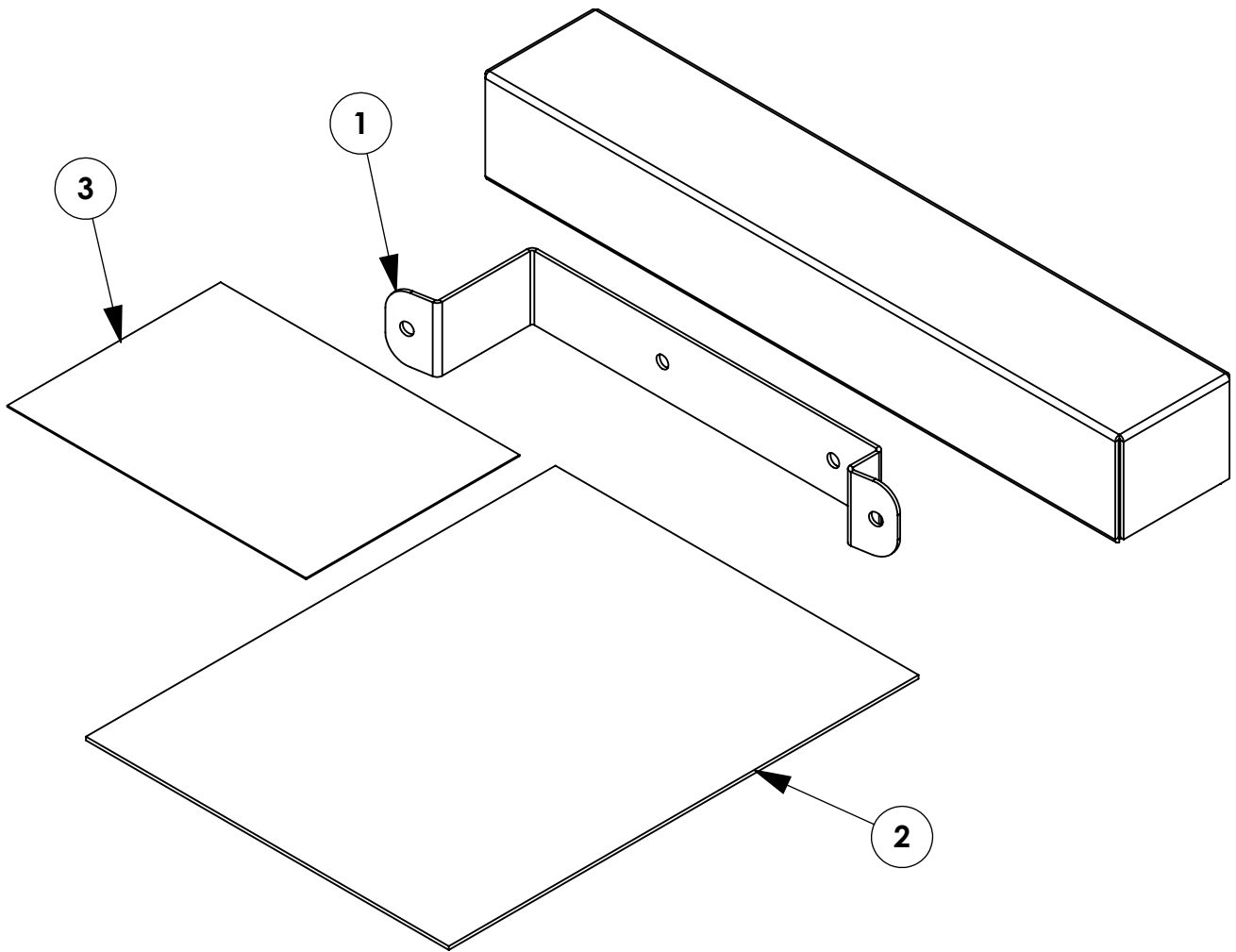


INSTR. NUMBER	PG:	REV:	ITEM NO.	PART NUMBER	DESCRIPTION	
<b>66234</b>	<b>1</b>	<b>B</b>	1	65511-G	TANK RACK SHELF BRACKET, GRAY	1
<b>TRSHLFBRKT</b>			2	66234	Install Instructions, TR Shelf Bracket	1
PART : Tank Rack, TR Shelf Bracket			3	BAGTRAC	BAG FOR TANK RACK ACCESSORY	1
			4	CRTBRK14EP	Carton	1



**GET TO KNOW THE VEHICLE** - AT THE BEGINNING OF ANY INSTALLATION, CHECK THE LOCATION OF THE FUEL TANK, FUEL LINES, BRAKE LINES, HIGH VOLTAGE BATTERIES AND WIRING HARNESES TO AVOID INJURY OR PROPERTY DAMAGE FROM TOOL CONTACT.

**SEAL ALL EXTERIOR HOLES** - ALL INSTALLATION HOLES SHOULD BE SEALED WITH BUTYL TAPE OR SILICON TO PREVENT WATER AND EXHAUST GASES FROM ENTERING THE VEHICLE.

**CONTROL DRILL DEPTH** - TO AVOID DAMAGE TO THE VEHICLE, USE A DRILL STOP OR CLEARED STEP BIT WHEN DRILLING INSTALLATION HOLES.

**ALWAYS ADD PRIMER** - WHEN ADDING INSTALLATION HOLES BE SURE TO USE A SELF-ETCHING PRIMER TO PREVENT CORROSION, FASTENER FAILURE AND INJURY.

**MOUNTING POINTS MUST HAVE METAL-TO-METAL CONTACT** - USE PROVIDED MOUNTING SPACERS TO ACCOMMODATE FOR VEHICLE FEATURES, CARPET OR SUBFLOORS.

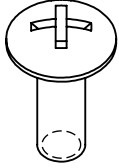
**PROVIDE CLEARANCE FOR SPACERS** - IF THE INSTALLATION VEHICLE CONTAINS A CARPET OR SUBFLOOR, USE A 1-3/16" DIAMETER CARPET CUTTER (P/N: 31183-0) AT ALL MOUNTING LOCATIONS TO OPEN UP ROOM FOR SPACERS.

**CHECK SPACER ORIENTATION** - BE SURE THAT THE INDENT IN THE SPACER COVERS THE PLUSNUT HEAD; THIS ENSURES THE MOST METAL-TO-METAL CONTACT AND REDUCES VIBRATION.

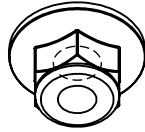
**PLUSNUT INSTALLATION** - A PLUSNUT GUN IS RECOMMENDED FOR PLUSNUT INSTALLATION FOR ITS PRODUCTION SPEED. HOWEVER, A PLUSNUT SETTING TOOL CAN ALSO BE USED (P/N: 22200-0).

**THRU-BOLT CLEARANCE** - WHEN USING A THRU-BOLT AT ANY MOUNTING LOCATION, BE SURE THAT YOUR HOLE HAS 1/16" CLEARANCE.

***FASTENERS USED***



FAS0062  
1/4-20x.75  
G5ZP SCREW  
QTY: 4



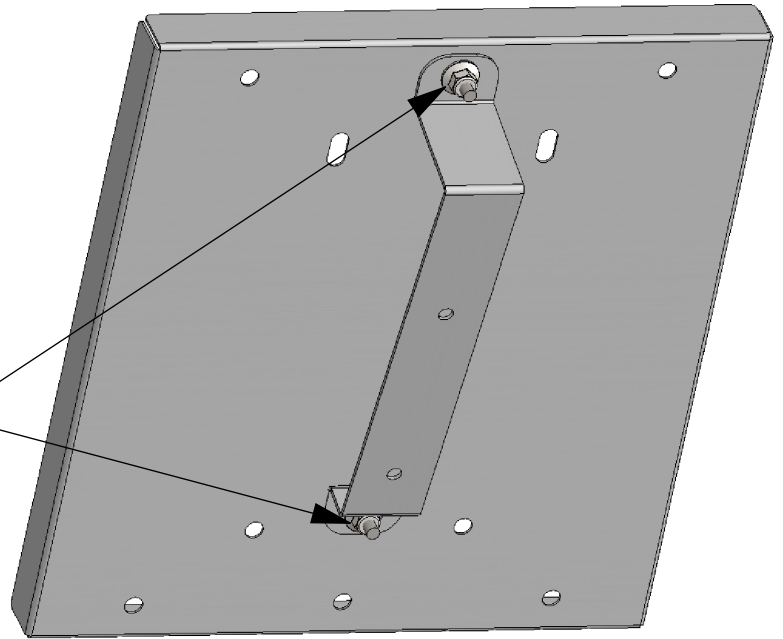
FAS0055  
1/4-20 ZP  
HEX NLK FLG NUT  
QTY: 4

***Install bracket to TR Shelf***

**USE NOTES TO ANNOTATE ALL FASTENER LOCATIONS, QUANTITY USED IN THE STEP THE AND TOOL NEEDED TO COMPLETE THE ACTION.**

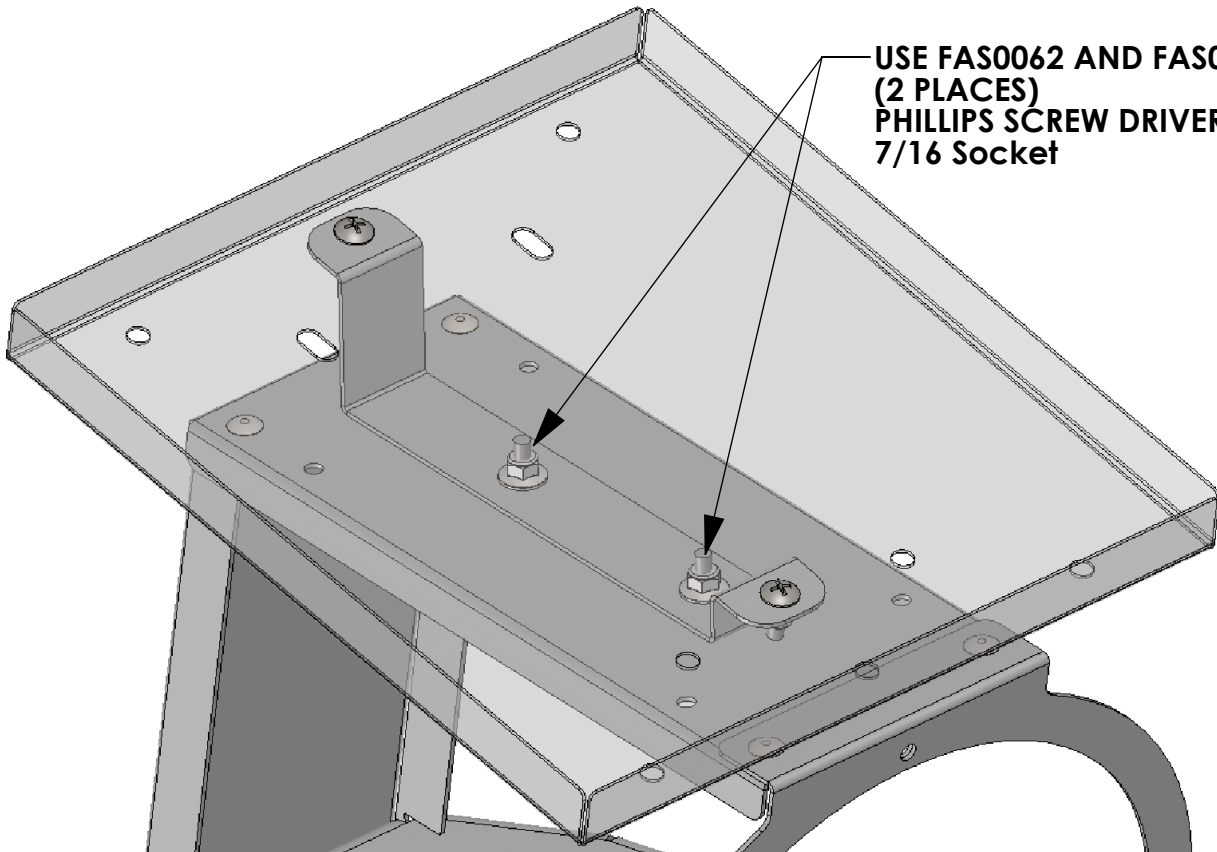
**USE FAS0062 AND FAS0055  
(2 PLACES)  
PHILLIPS SCREW DRIVER  
7/16 Socket**

**9/16 drill is needed to drill new  
holes if tank rack is being  
mounted at a 45 degree angle in  
order for the shelf to fit.**



***STEP 2 - Install Bracket To Angled Tank Rack***

**USE FAS0062 AND FAS0055  
(2 PLACES)  
PHILLIPS SCREW DRIVER  
7/16 Socket**



**INSTALLATION IS COMPLETE**