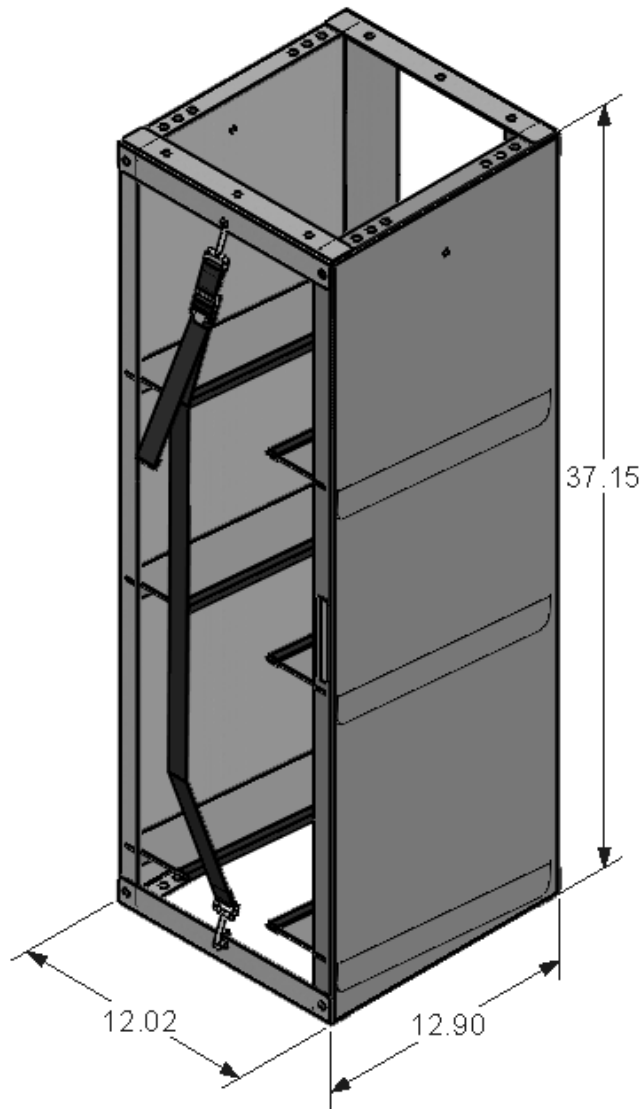


TR330 - Tank Rack, 330



PRODUCT WEIGHT
37.12 LBS

WIDTH x DEPTH x HEIGHT
12.02" x 12.90" x 37.15"

CARRYING CAPABILITY
3 - 30lb Tanks

COLOR
GRAY

CATALOG NUMBER
TR330

PRODUCT FEATURES

TR330 is designed to fit three thirty pound freon tanks.

When mounting over an AD Rail kit an additional mounting kit is required. (RKAWTR)

TRSHELF30 is an accessory shelf that mounts to the top of this rack.

Tank racks can be stacked on top of one another for high roof vehicles as long as the shelf end panel next to it is 1/2 or more the height of the second rack when stacked. The tank rack must be properly secured to the shelf end panel, tank rack, and wall of vehicle for both racks.

Some drilling may be required.

SEE PAGE 2 FOR APPLICATION NOTES AND ACCESSORIES, OTHER PRODUCTS THAT WORK WITH THIS UNIT.



CATALOG NUMBER **TR330**

PRODUCT APPLICATION

The TR tank racks are designed to fit most all vehicles

ACCESSORIES THAT WILL WORK WITH THIS PRODUCT

<i>CATALOG NUMBER</i>	<i>DESCRIPTION</i>
RKAWTR	ADAPTER,ASM, RLKT, WTR'S
TRSELF30	TANK RACK 30LB, SHELF

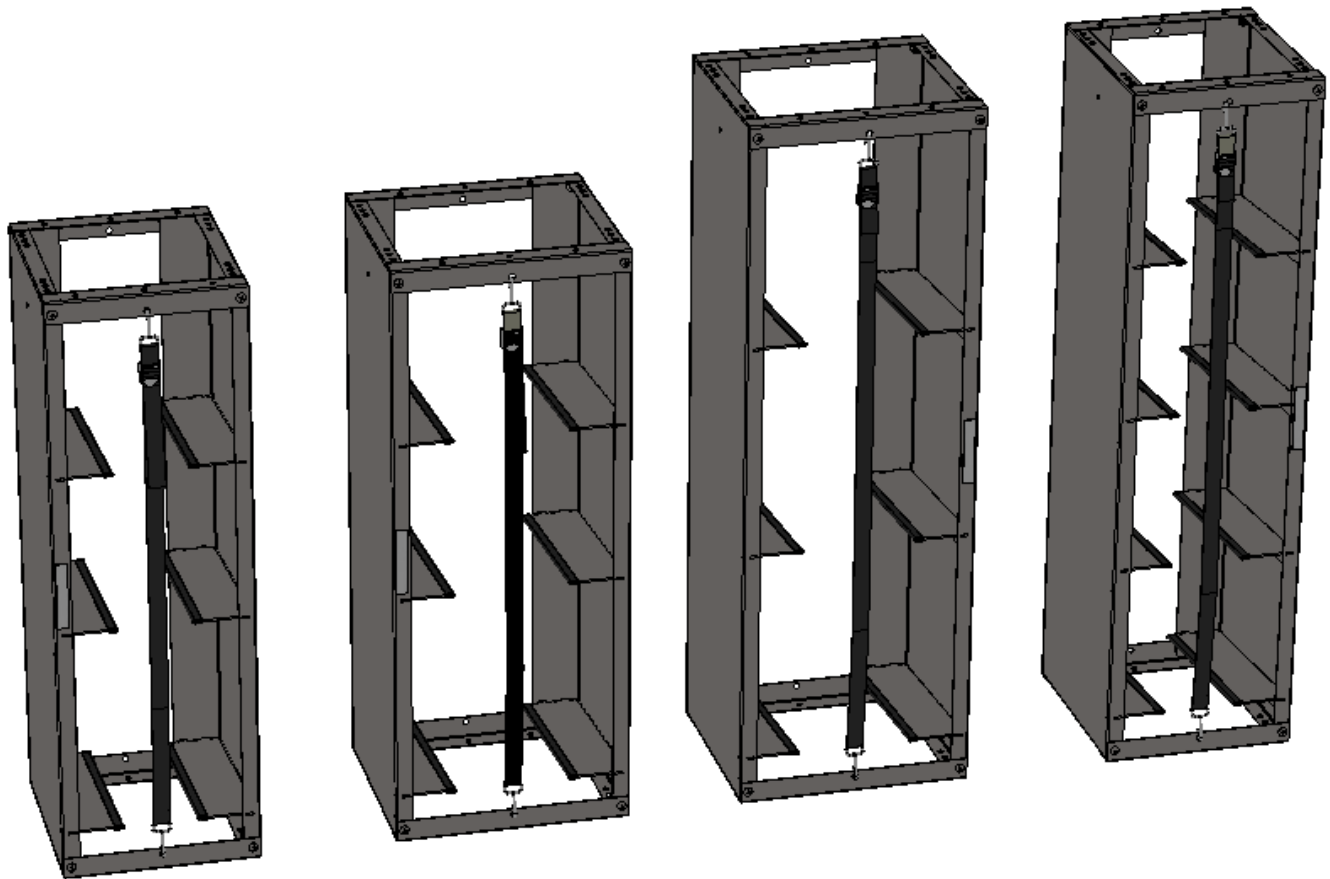
SPECIAL APPLICATION NOTES

Introduction / Comments:

TR Tank Rack's can be installed in most any vehicle. When Mounting over an AD Rail kit, An additional mounting kit is required (RKAWTR)

Note:

It is advised that all fasteners used in this assembly and installation should be checked for tightness at the following intervals: @ 2-weeks and again @ 6-weeks of operation. This preventive maintenance step must be completed to ensure your Product gives you long service life.



TR330

TR230150

TR350

TR430

TR TANK RACK

- PRECAUTIONS -





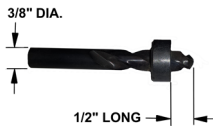
 **CAUTION** 
**THE USE OF AIR IMPACT TOOLS CAN
OVER-TORQUE FASTENERS AND
CAUSE FASTENER FAILURE!**





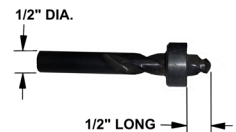
 **CAUTION** 
**ALL INSTALLATION HOLES SHOULD BE SEALED
WITH SILICON OR BUTYL SEALANT TO PREVENT
EXHAUST FUMES FROM ENTERING THE VEHICLE!**



 **DANGER** 
**INSPECT FOR FUEL TANK, FUEL LINES, BRAKE LINES, HIGH
VOLTAGE BATTERIES AND ELECTRICAL LINES PRIOR TO
DRILLING TO AVOID DAMAGING CRITICAL VEHICLE SYSTEMS
OR INJURY TO INSTALLER DURING INSTALLATION PROCESS!**



 **CAUTION** 
**TO AVOID DAMAGING THE VEHICLE ALWAYS USE DRILL
STOPS WHEN DRILLING ANY INSTALLATION HOLES!
ADRIAN AVAILABLE PART #'S 31121-0 (3/8" X 1/2"
DEEP), 31121-0 (1/2" x 1/2" DEEP)**



- IMPORTANT WARRANTY REQUIREMENTS -

1. SUBSTITUTING ADRIAN STEEL SPECIFIED FASTENERS FOR ASSEMBLY AND/OR INSTALLATION WILL VOID YOUR PRODUCT WARRANTY.
2. ALL HOLES DRILLED INTO VEHICLE SHOULD HAVE THE RAW METAL EDGES SEALED WITH A SELF-ETCHING PRIMER TO RESIST CORROSION AND POTENTIAL FASTENER POINT FAILURE.
3. ALL FASTENERS USED IN THE INSTALLATION OF THIS PRODUCT SHOULD BE TIGHTENED TO THE TORQUE(S) SPECIFIED IN THESE INSTRUCTIONS.
4. THESE INSTRUCTIONS SHOULD BE KEPT WITH THE VEHICLE.

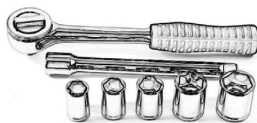
THE BASIC TOOLS NEEDED FOR MOST INSTALLATIONS



DRILL



DRILL BIT WITH
STOP



RATCHET, SOCKETS
AND/OR WRENCHES



SCREWDRIVERS



MEASURING TAPE

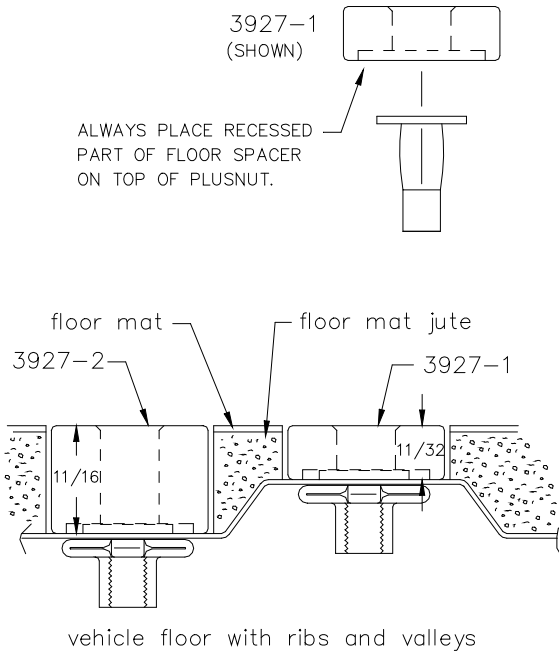
ADDITIONAL TOOLS MAY BE NEEDED FOR THIS INSTALLATION AND THEY WILL BE IDENTIFIED IN THE STEPS THAT FOLLOW.

If your vehicle contains carpet or a rubber floor mat you will need to prepare the mounting location. Position the product to be installed into the vehicle and once you are satisfied with the mounting locations, mark the mounting locations. Using a 1-3/16" diameter carpet cutter (P/N: 31183-0). Select the appropriate floor spacers as shown in the illustration. Set those aside for use later into the installation process.

Using the correct drill bit size for the selected plusnut, drill the mounting holes in the vehicle sheet metal to prepare for installing the plusnuts.

If you are thru-bolting at any of the locations simply drill a hole that is 1/16" larger than the bolt size(s) for those locations.

Once you have drilled the holes into the vehicle, the raw metal edges should be sealed using a self-etching primer to resist corrosion and potential fastener point failure.



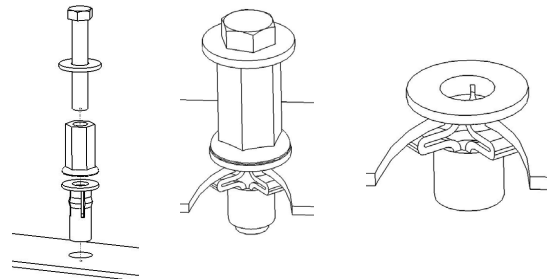
A PLUSNUT (RIVNUT) SETTING TOOL IS REQUIRED FOR PLUSNUT (RIVNUT) INSTALLATION . PLUS NUT SETTING TOOL CAN BE ORDERED THROUGH ADRIAN STEEL, OR USE AN AIR POWERED PLUSNUT SETTING GUN.

1/4-20UNC Plusnut (FAS0052) Use 3/8" dia. drill w/stop

FAS0080 SCREW, HXHD, 1/4-20UNCx2.00", G8
FAS0067 WASHER, FLAT, 1/4"ID
22200-0 PLUSNUT TOOL

5/16-18UNC Plusnut (FAS0091) Use 1/2" dia. drill w/stop

FAS0095 SCREW, HXHD, 5/16-18UNCx2.00", G8
FAS0086 WASHER, FLAT, 5/16"ID
22200-0 PLUSNUT TOOL

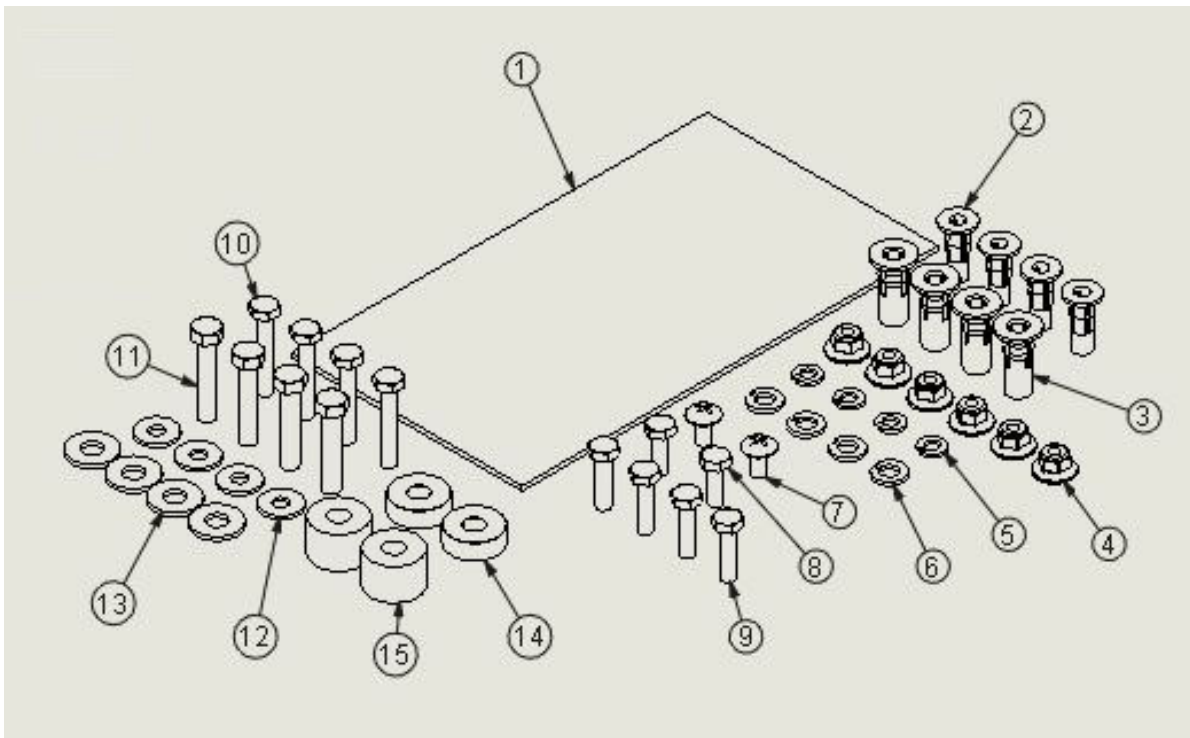


Place barrel of the plusnut body in sheet metal thru hole until flange is flush with sheet metal.

Using a 9/16" combination wrench of plusnut tool body and a second hand wrench, ratchet, or air tool, rotate the hex bolt head CW to draw plus nut flanges up (set the plusnut).

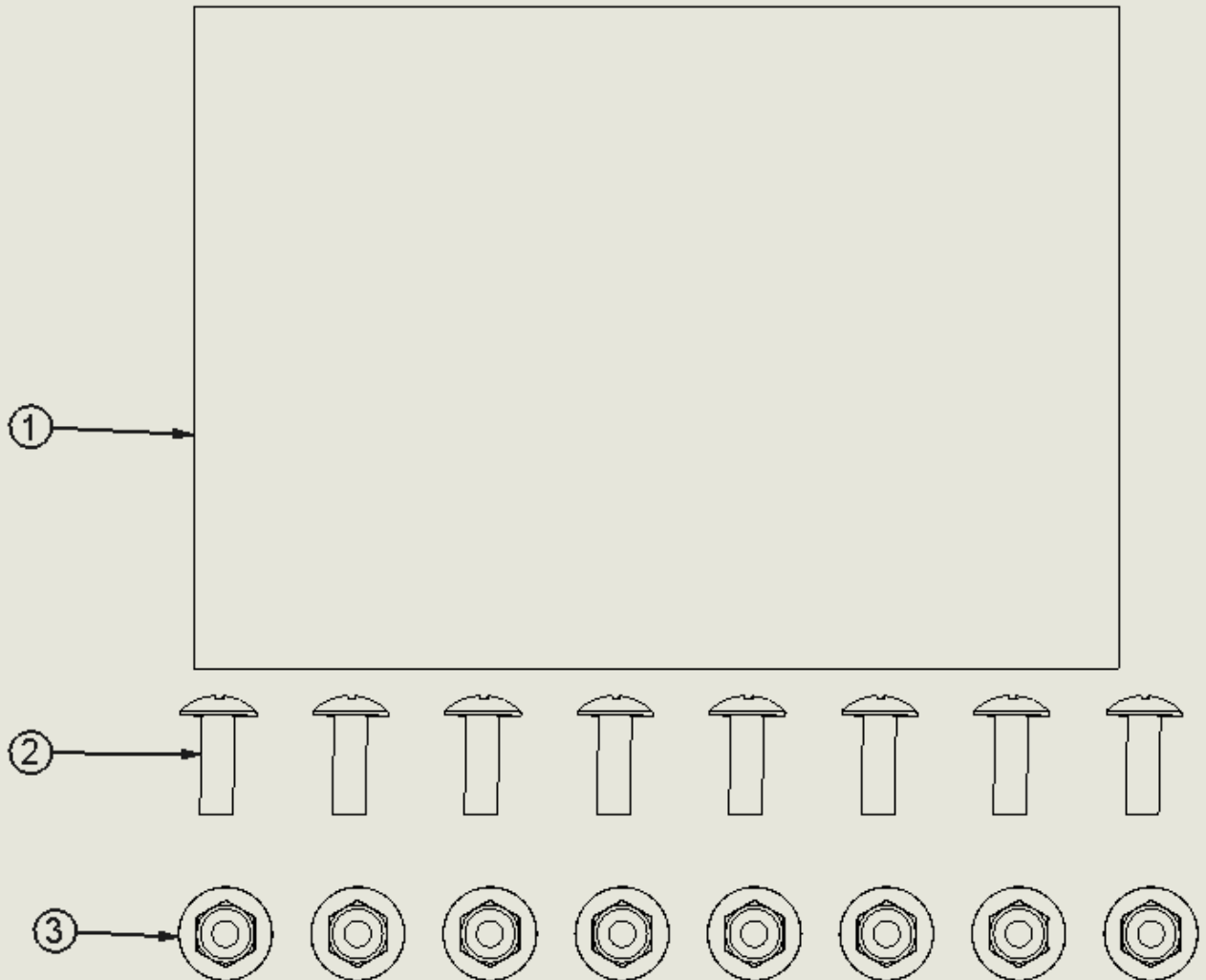
**Installation and/or Assembly Fasteners
(BAGWTR)**

ITEM NO.	PART NUMBER	DESCRIPTION	BAGWTR/QTY.
1	BAG0509-A	5"X9" 4MIL AUTOBAG	1
2	FAS0052	Plusnut, 1/4	4
3	FAS0091	Plusnut, 5/16	4
4	FAS0055	Nut, Hex Flange, Nylock 1/4-20	6
5	FAS0060	Washer, Lock, Split, 1/4	4
6	FAS0098	Washer, Lock, Split, 5/16, Zinc Plate	4
7	FAS0061	Screw, Truss Hd. Ph, 1/4-20x0.50	2
8	FAS0063	Screw, Hex Hd, 1/4-20x0.75 Zn Plate, Grade 5	2
9	FAS0078	Screw, Hex Hd, 1/4-20x1.00 Zn Plate, Grade 8	4
10	FAS0079	Screw, Hex Hd, 1/4-20x1.50 Zn Plate, Grade 8	4
11	FAS0092	Screw, Hex Hd, 5/16-18x1.50 Zn Plate, G8	4
12	FAS0067	Washer, Flat, 1/4	4
13	FAS0086	WASHER, FLAT USS 5/16 ZP	4
14	03927-1	Floor Spacer Short	2
15	03927-2	Tall Floor Spacer	2

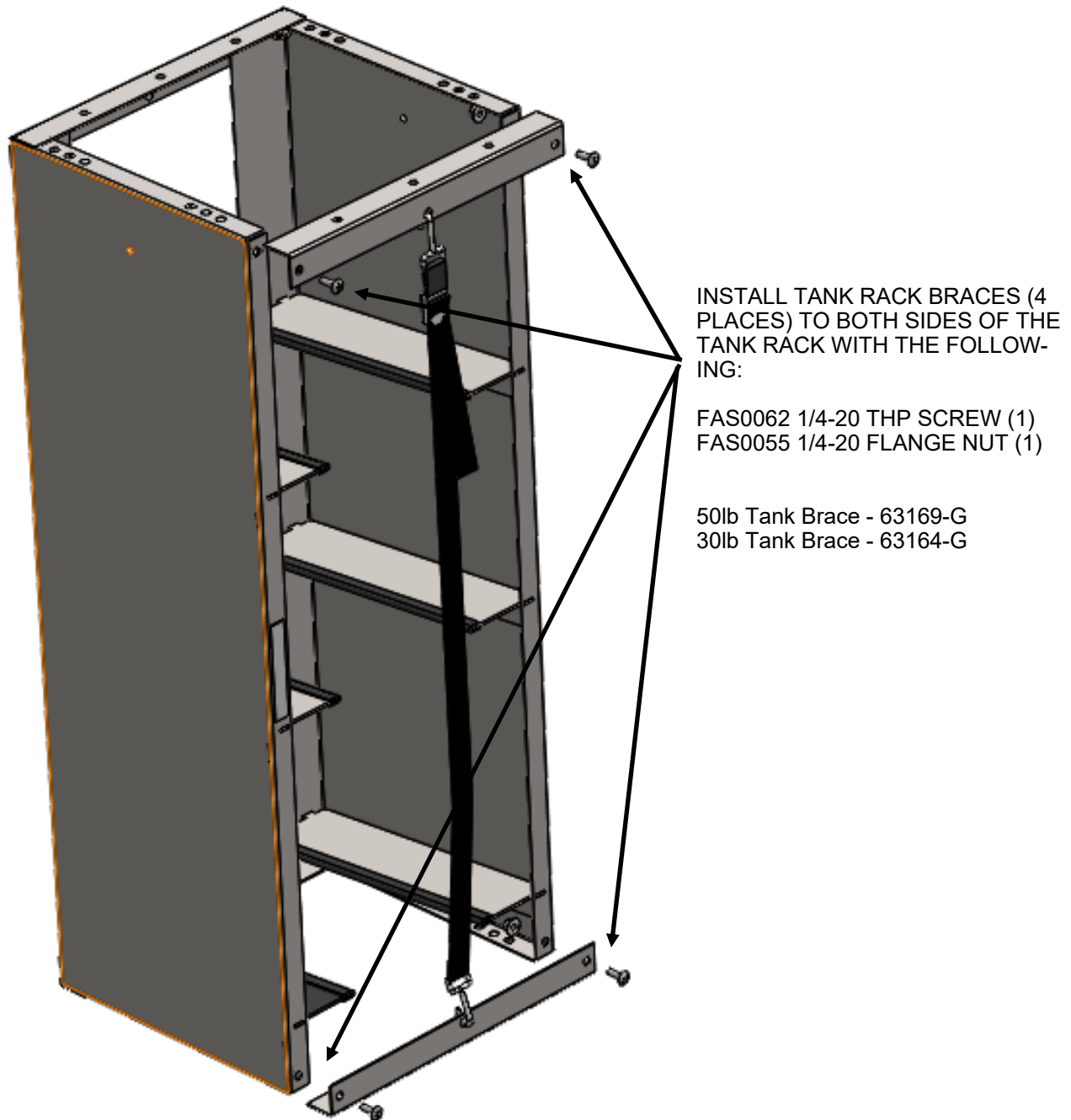


Installation and/or Assembly Fasteners
(BAGTR)

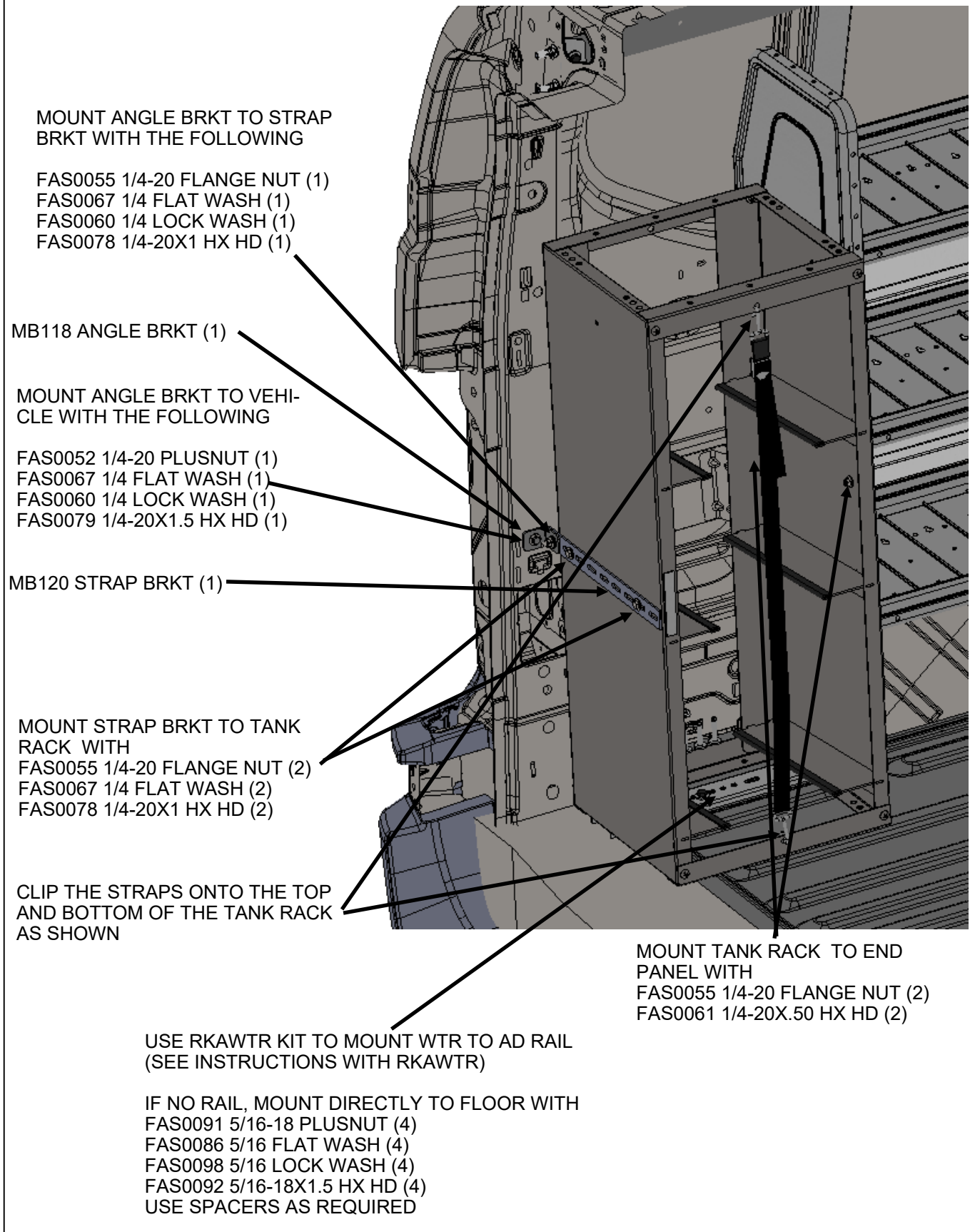
ITEM NO.	PART NUMBER	DESCRIPTION	QTY.
1	BAG0507-A	5" x 7" 3MIL AUTOBAG	1
2	FAS0062	SCREW,THP 1/4-20X.75 G5ZP	8
3	FAS0055	NUT,HEX NLK FLG 1/4-20 ZP	8



Assemble Tank Rack With BAGTR



Mounting TR on Street Side Rear of Vehicle



Mount WTR to Curb Side Forward of Vehicle

MOUNT ANGLE BRKT TO VEHICLE
WITH THE FOLLOWING

FAS0052 1/4-20 PLUSNUT (1)
FAS0067 1/4 FLAT WASH (1)
FAS0060 1/4 LOCK WASH (1)
FAS0079 1/4-20X1.5 HX HD (1)

MOUNT ANGLE BRKT TO STRAP
BRKT WITH THE FOLLOWING:

FAS0055 1/4-20 FLANGE NUT (1)
FAS0067 1/4 FLAT WASH (1)
FAS0060 1/4 LOCK WASH (1)
FAS0078 1/4-20X1 HX HD (1)

MOUNT STRAP BRKT TO TR WITH:

FAS0055 1/4-20 FLANGE NUT (1)
FAS0067 1/4 FLAT WASH (1)
FAS0078 1/4-20X1 HX HD (1)

MOUNT TR TO END PANEL WITH
FAS0055 1/4-20 FLANGE NUT (2)
FAS0061 1/4-20X.50 HX HD (2)

CLIP THE STRAPS ONTO THE TOP
AND BOTTOM OF THE TANK RACK
AS SHOWN

MOUNT TR DIRECTLY TO FLOOR WITH
FAS0091 5/16-18 PLUSNUT (4)
FAS0086 5/16 FLAT WASH (4)
FAS0098 5/16 LOCK WASH (4)
FAS0092 5/16-18X1.5 HX HD (4)
USE SPACERS AS REQUIRED

**DOUBLE CHECK ALL FASTENERS LOCATIONS TO BE SURE THAT ALL
FASTENERS ARE TIGHTENED TO SPECIFICATIONS.
YOUR INSTALLATION IS NOW COMPLETE!
STOW THIS COPY IN THE VEHICLE FOR FUTURE REFERENCES!**