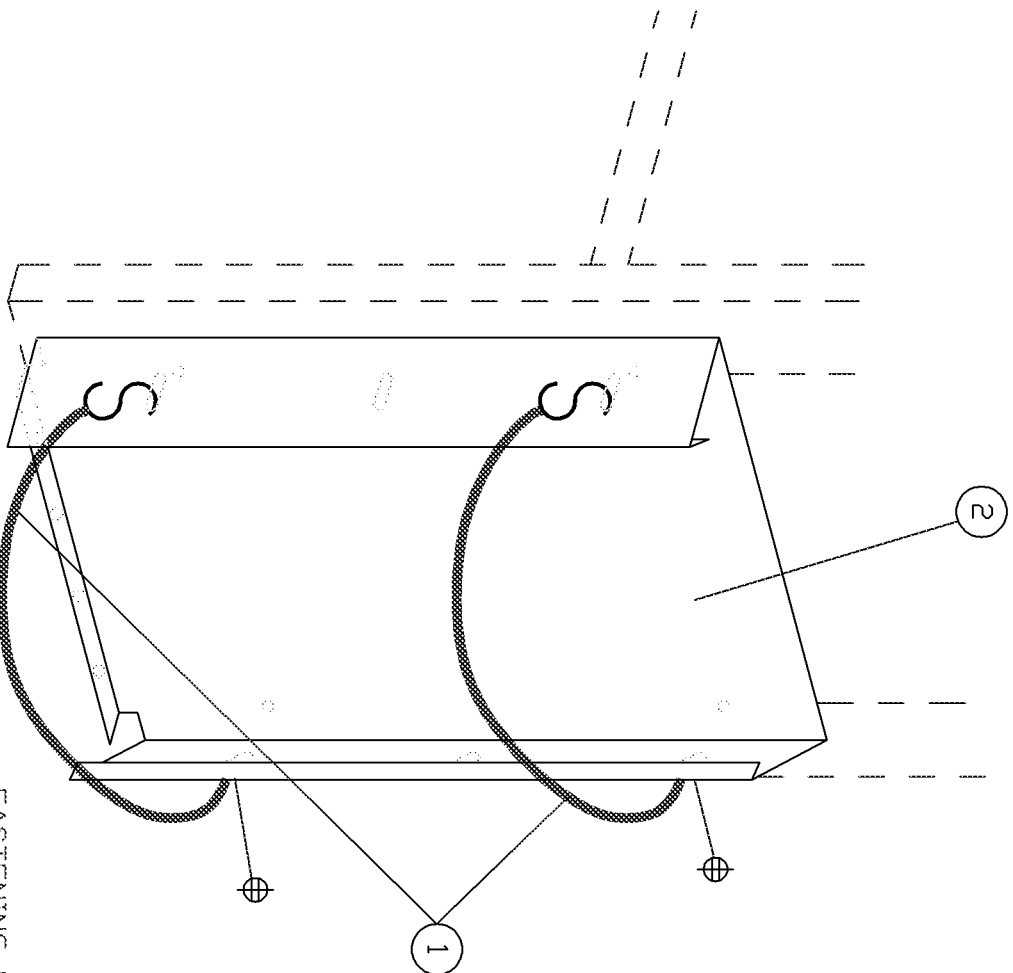
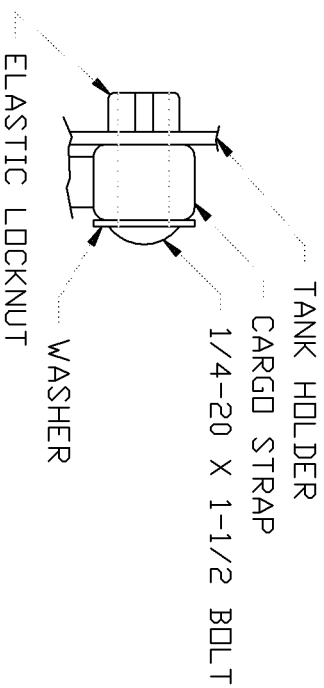


DATE OF ISSUE	DATE	ENTRY	PAGE NO. & EXT.
BH	12861	6/17/10	S/L THSD D
PAGE NO. 649 # REF 14740 DESCRIPTION CITY			

TANK HOLDER IS MOST GENERALLY MOUNTED UP AGAINST A SHELF RACK OR A CABINET FOR SUPPORT.



FASTENING PROCEDURES

1. USE NUT & BOLT THRU WHEREVER POSSIBLE.
2. USE PLUSNUTS FOR BLIND FASTENING.
3. AS A LAST RESORT USE SHEET METAL SCREWS.

CAUTION:
DRILL THRU FLOOR WITH CARE
WATCH FOR GAS TANK, CONTROL
LINES, & ELECTRICAL WIRING.