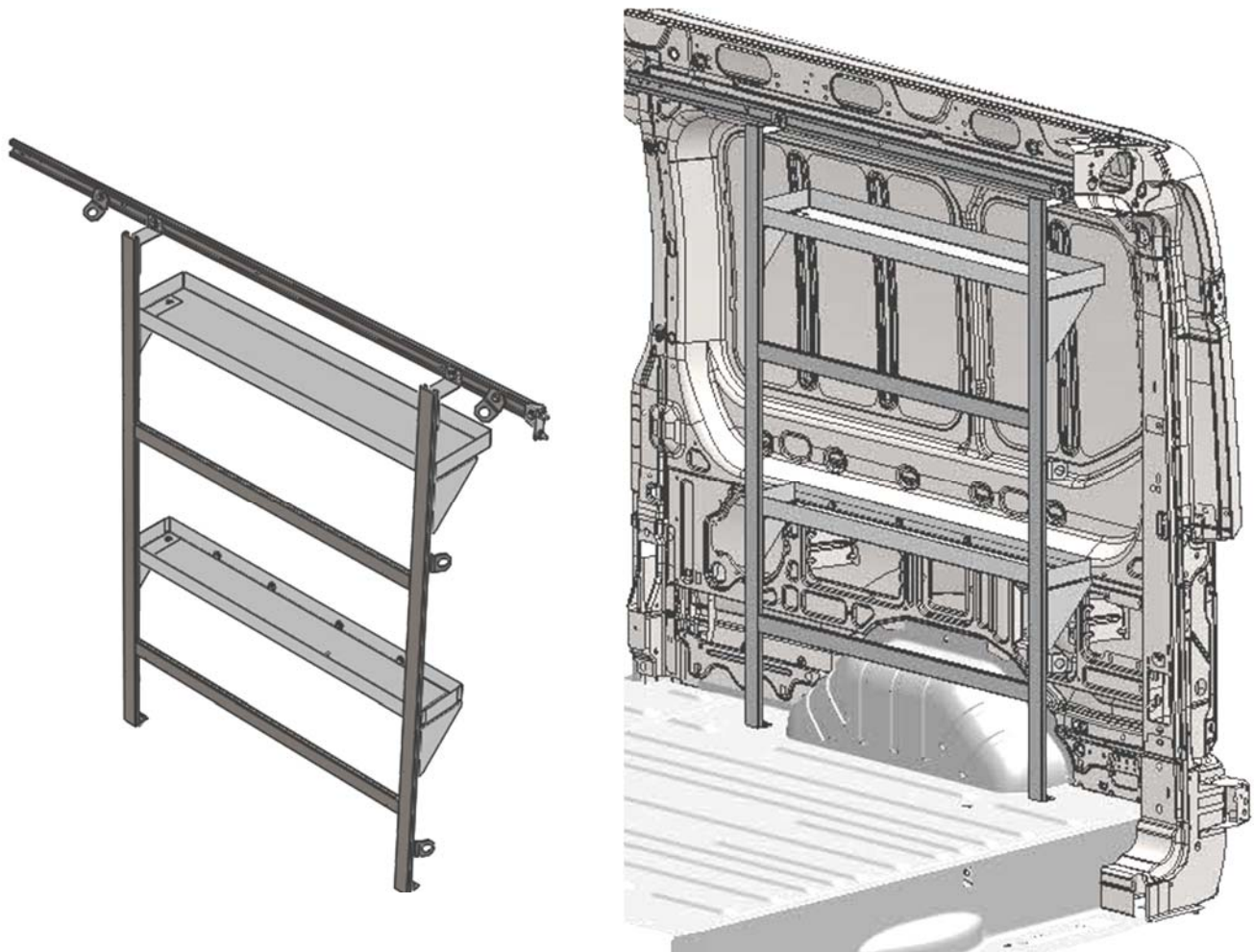


Introduction / Comments:

THIS UNIT IS DESIGNED TO SECURE LARGE BOXED ITEMS.

Note: It is advised that all fasteners used in this assembly and installation should be checked for tightness at the following intervals: @ 2-weeks and again @ 6-weeks of operation. This preventive maintenance step must be completed to ensure your Product gives you long service life.



**TDRFT148
TIE DOWN RACK, 2015 FORD TRANSIT,
MID, HIGH ROOF, 148" WHEEL BASE**

- PRECAUTIONS -



CAUTION



**THE USE OF AIR IMPACT TOOLS CAN
OVER-TORQUE FASTENERS AND
CAUSE FASTENER FAILURE!**



CAUTION



**ALL INSTALLATION HOLES SHOULD BE SEALED
WITH SILICON OR BUTYL SEALANT TO PREVENT
EXHAUST FUMES FROM ENTERING THE VEHICLE!**



DANGER



**INSPECT FOR FUEL TANK, FUEL LINES, BRAKE LINES, HIGH
VOLTAGE BATTERIES AND ELECTRICAL LINES PRIOR TO
DRILLING TO AVOID DAMAGING CRITICAL VEHICLE SYSTEMS
OR INJURY TO INSTALLER DURING INSTALLATION PROCESS!**



CAUTION



**TO AVOID DAMAGING THE VEHICLE ALWAYS
USE DRILL STOPS WHEN DRILLING ANY IN-
STALLATION HOLES!**



- IMPORTANT WARRANTY REQUIREMENTS -

1. SUBSTITUTING ADRIAN STEEL SPECIFIED FASTENERS FOR ASSEMBLY AND/OR INSTALLATION WILL VOID YOUR PRODUCT WARRANTY.
2. ALL HOLES DRILLED INTO VEHICLE SHOULD HAVE THE RAW METAL EDGES SEALED WITH A SELF-ETCHING PRIMER TO RESIST CORROSION AND POTENTIAL FASTENER POINT FAILURE.
3. ALL FASTENERS USED IN THE INSTALLATION OF THIS PRODUCT SHOULD BE TIGHTENED TO THE TORQUE(S) SPECIFIED IN THESE INSTRUCTIONS.
4. THESE INSTRUCTIONS SHOULD BE KEPT WITH THE VEHICLE.

THE BASIC TOOLS NEEDED FOR MOST INSTALLATIONS



DRILL



DRILL BIT WITH
STOP



RATCHET, SOCKETS
AND/OR WRENCHES



SCREWDRIVERS



MEASURING TAPE

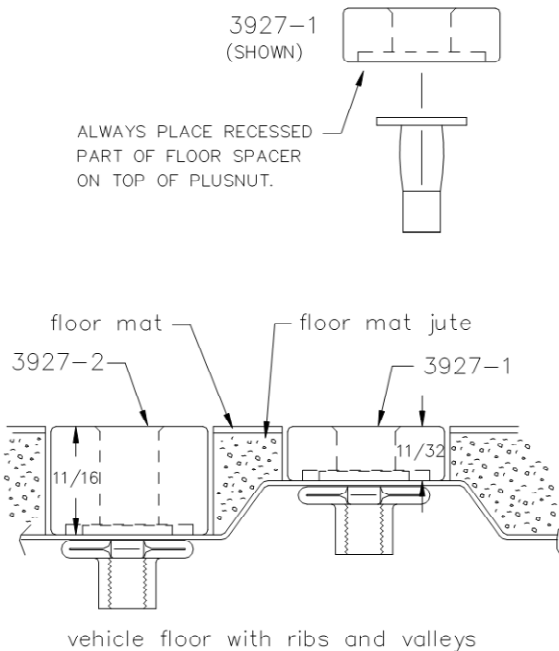
ADDITIONAL TOOLS MAY BE NEEDED FOR THIS INSTALLATION AND THEY WILL BE IDENTIFIED IN THE STEPS THAT FOLLOW.

If your vehicle contains carpet or a rubber floor mat you will need to prepare the mounting location. Position the product to be installed into the vehicle and once you are satisfied with the mounting locations, mark the mounting locations. Using a 1-3/16" diameter carpet cutter (P/N: 31183-0). Select the appropriate floor spacers as shown in the illustration. Set those aside for use later into the installation process.

Using the correct drill bit size for the selected plusnut, drill the mounting holes in the vehicle sheet metal to prepare for installing the plusnuts.

If you are thru-bolting at any of the locations simply drill a hole that is 1/16" larger than the bolt size(s) for those locations.

Once you have drilled the holes into the vehicle, the raw metal edges should be sealed using a self-etching primer to resist corrosion and potential fastener point failure.



A PLUSNUT (RIVNUT) SETTING TOOL IS REQUIRED FOR PLUSNUT (RIVNUT) INSTALLATION AND IS NOT SUPPLIED WITH THIS KIT. OR USE AN AIR POWERED PLUSNUT SETTING GUN.

1/4-20UNC Plusnut (FAS0052) Use 3/8" dia. drill w/stop

FAS0080 SCREW, HXHD, 1/4-20UNCx2.00", G8

FAS0067 WASHER, FLAT, 1/4"ID

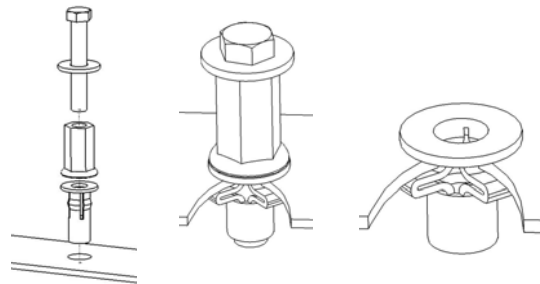
22200-0 PLUSNUT TOOL

5/16-18UNC Plusnut (FAS0091) Use 1/2" dia. drill w/stop

FAS0095 SCREW, HXHD, 5/16-18UNCx2.00", G8

FAS0086 WASHER, FLAT, 5/16"ID

22200-0 PLUSNUT TOOL

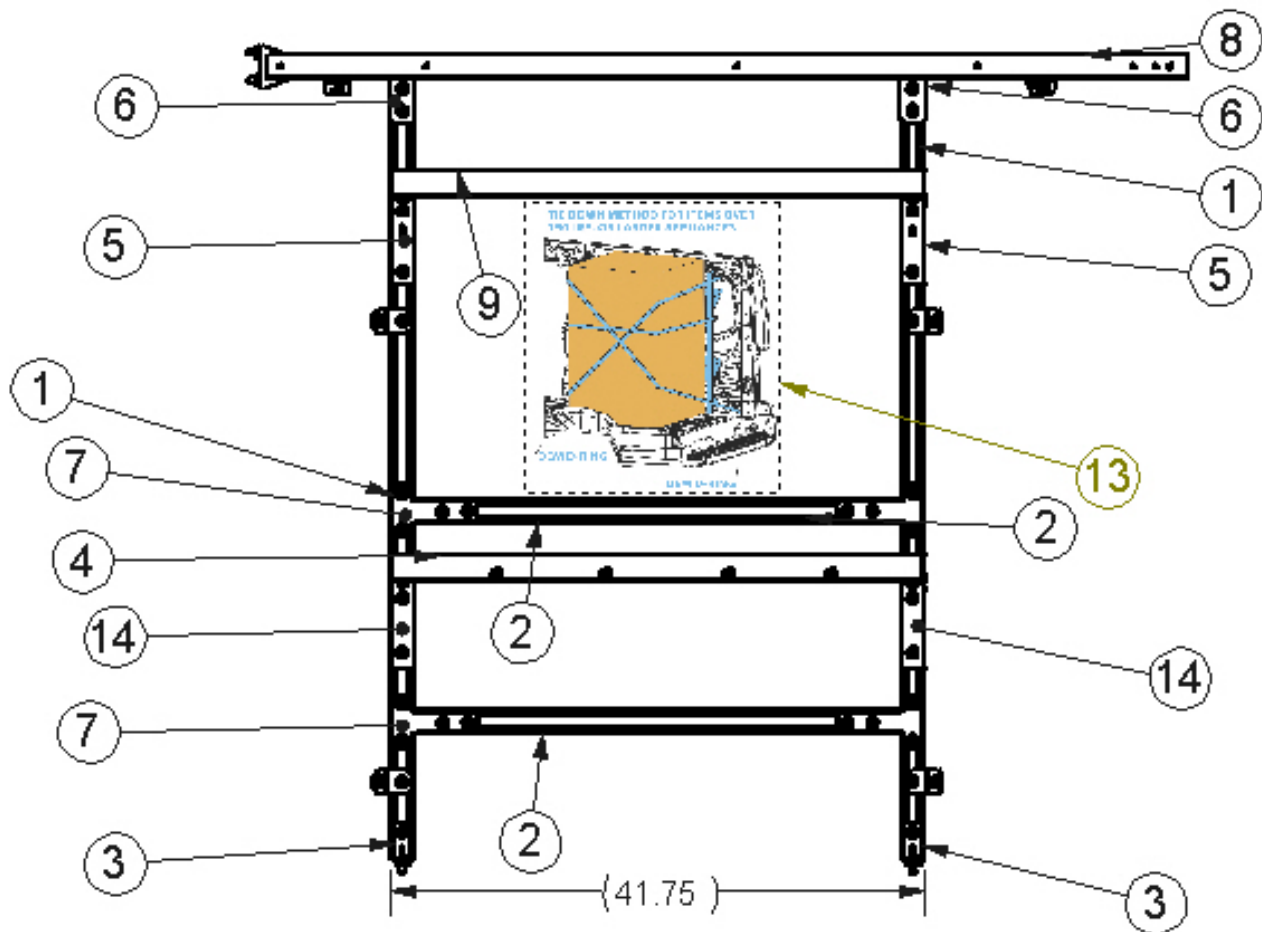


Place barrel of the plusnut body in sheet metal thru hole until flange is flush with sheet metal.

Using a 9/16" combination wrench of plusnut tool body and a second hand wrench, ratchet, or air tool, rotate the hex bolt head CW to draw plus nut flanges up (set the plusnut).

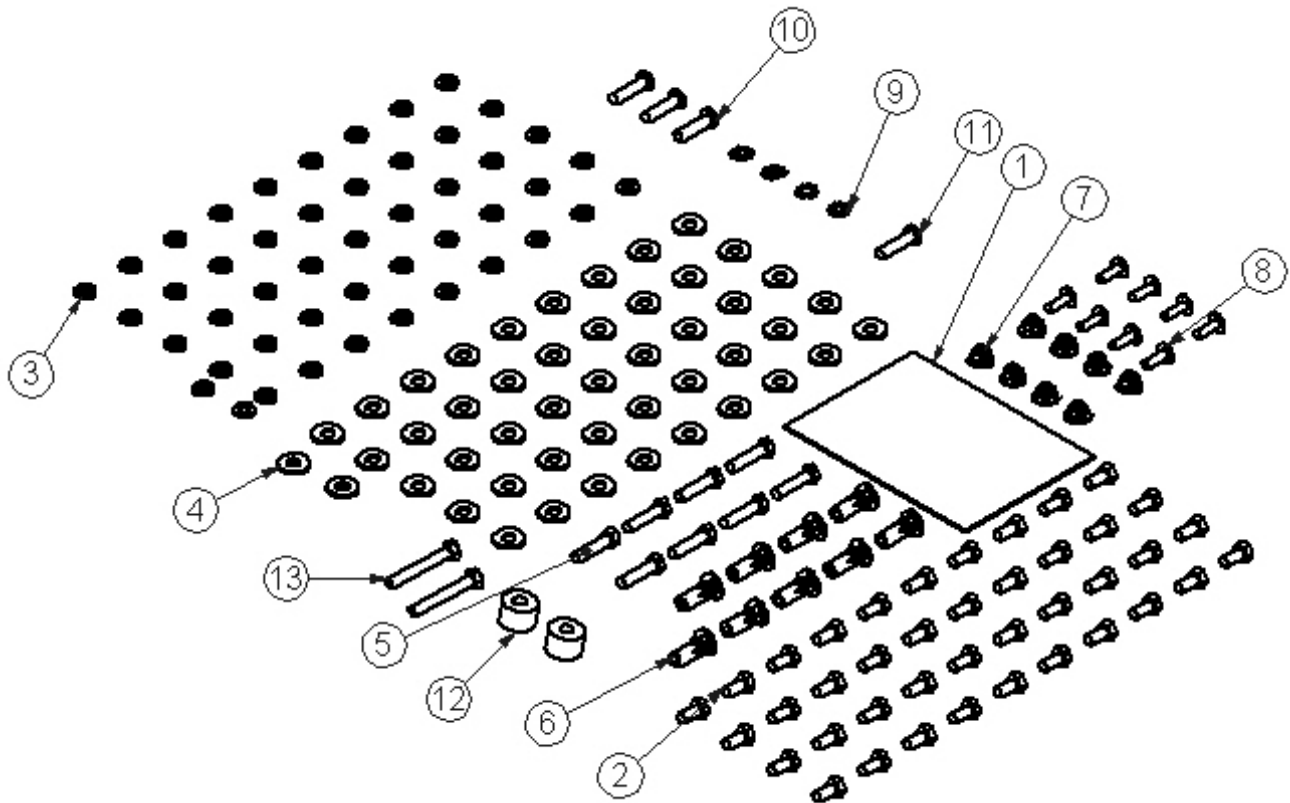
TDRFT148
TIE DOWN RACK , 2015 TRANSIT, MR, HR

ITEM NO.	PART NUMBER	DESCRIPTION	TDRFT148/QTY.
1	48358	UPRIGHT RAIL	2
2	48359	CROSS RAILS	2
3	06665-1	MB116 MOUNT BRACKET	2
4	49708-G	LOWER SHELF, TDR148	1
5	50748-G	Top Shelf Mtg Brkt	2
6	49707-G	UPPER MOUNT BRKTS,	2
7	44117-G	CROSS RAIL BRACKET, CRK-35	4
8	47082	RAIL, 72", AD LWB, MR	1
9	50747-G	UPPER SHELF, TDR148	1
10	BAG48362	FAS BAG, TDRFT148	1
11	HDW48381	HARDWARE KIT, SLIDES	1
12	24772-0	STRAP, NYLON, 1"X 120"	4
13	48749	TDRFT148 LABEL 5X7	1
14	49704-G	SHELF GUSSET	2



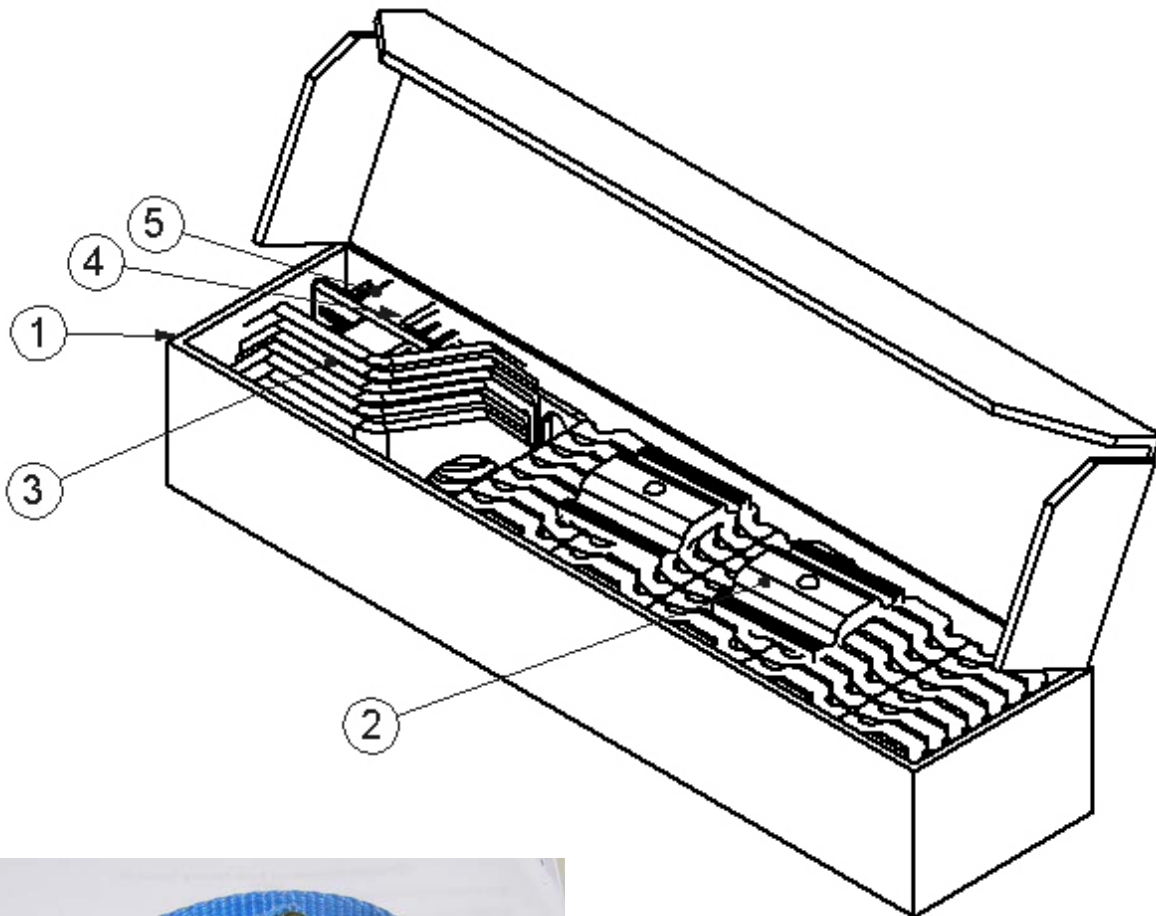
FASTENER BAG BAG48362

ITEM NO.	PART NUMBER	DESCRIPTION	BAG 48362/QTY.
1	BAG0507-A	5" x 7" 3MIL AUTOBAG	1
2	FAS0165	Screw, Hex Hd, 5/16-18x.625	40
3	FAS0098	Washer, Lock, Split, 5/16, Zinc Plate	47
4	FAS0086	WASHER, FLAT USS 5/16 ZP	47
5	FAS0093	Screw, Hex Hd, 5/16-18x1.25	8
6	FAS0091	Plusnut, 5/16	9
7	FAS0055	Nut, Hex Flange, Nylock 1/4-20	8
8	FAS0062	Screw, Truss Hd. Ph, 1/4-20x0.75	8
9	FAS0085	Washer, Lock, Ext. Tooth, 5/16	4
10	FAS0741	Screw, Button Hd Hex Soc, M8-1.25 X 30	3
11	FAS0708	Screw, Button Hd Hex Soc, 5/16-18X1.25, BLK OXIDE	1
12	03927-2	Tall Floor Spacer	2
13	FAS0095	Screw, Hex Hd, 5/16-18x2.00, Grade 8	2



HARDWARE KIT, HDW48381

ITEM NO.	PART NUMBER	DESCRIPTION	HDW48381/QTY.
1	CRTHDWRK	CARTON, HARDWARE, AD RAIL KIT	1
2	35335-0	SLIDE	42
3	36943-0	TIE DOWN PLATE	6
4	47078-G	D-PILLAR MTG BRKT, TRANSIT	1
5	36496-0	END CAP	3



← 24772-0 STRAP, NYLON,
1 X 120" RACHET QTY (4)

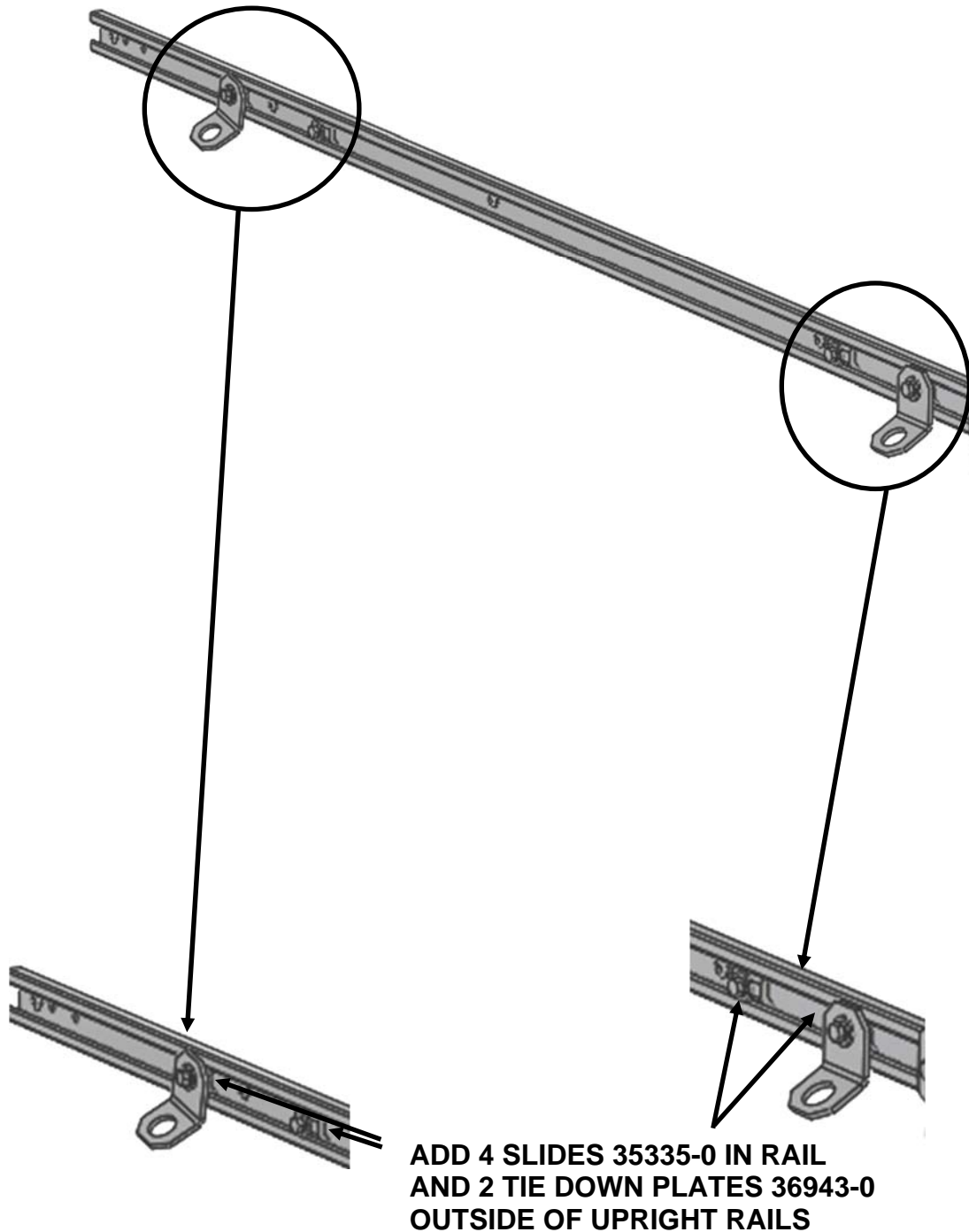
STORE ON LOWER SHELF
WHEN NOT BEING USED

STEP 1A —VEHICLES WITH OEM LINER KITS—NEED TO REMOVE UPPER PANELS ON THE STREET AND CURB SIDE.

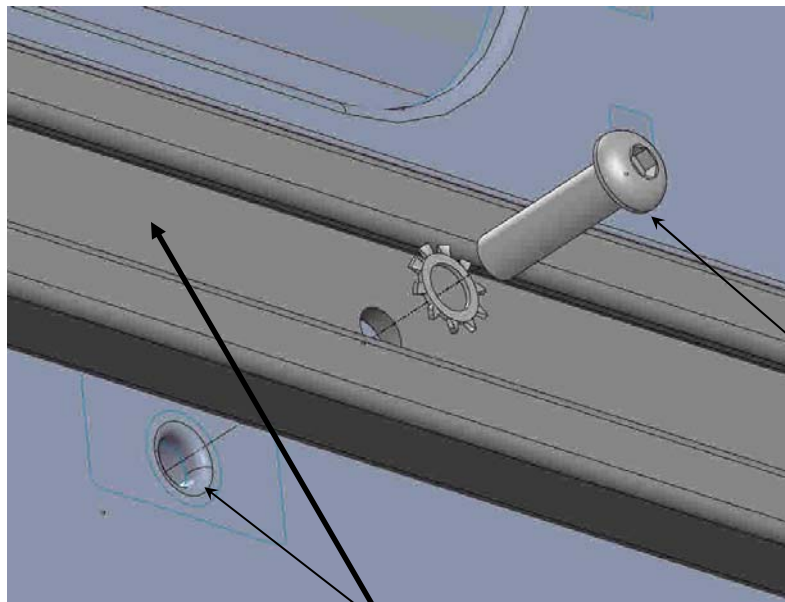


GENERIC PICTURE OF VEHICLE AND
LINER KIT
SHOWING RAIL KIT INSTALLED FOR
REFERENCE ONLY

PREPARE UPPER RAIL 47082 RAIL 72 AD , LWB,MR, WITH 47078-G D-PILLAR MTG BRKT CURB SIDE



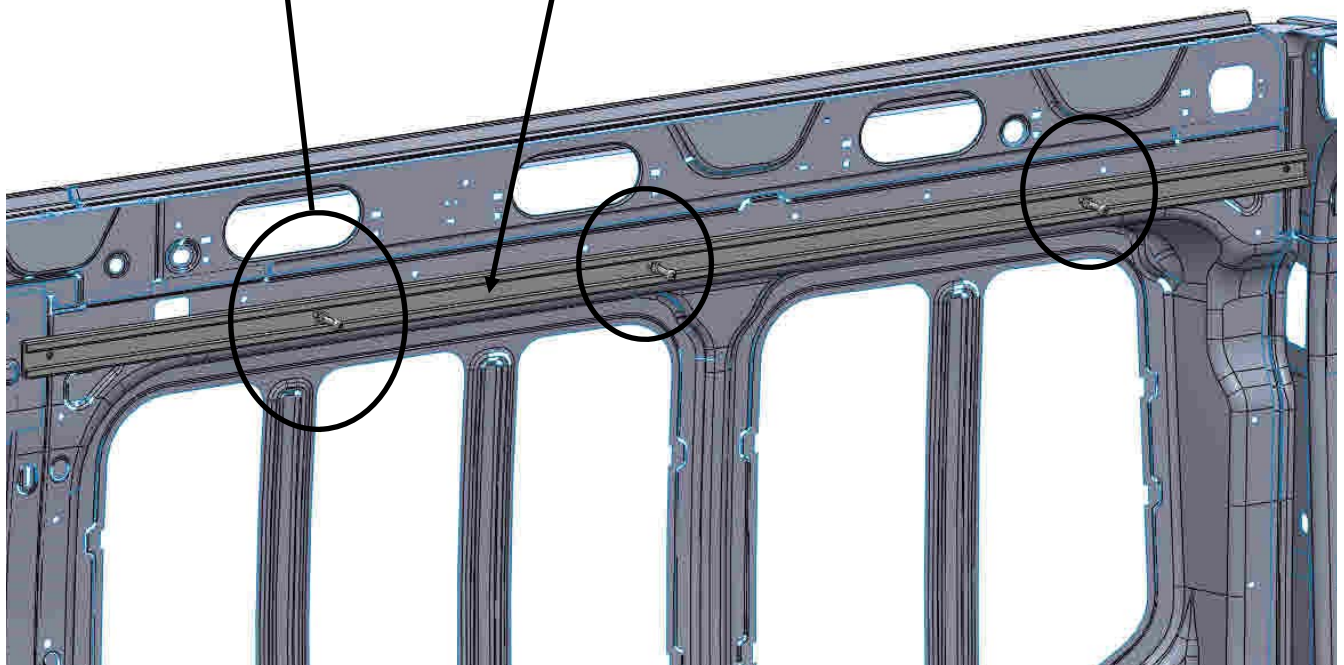
CURB SIDE UPPER RAIL



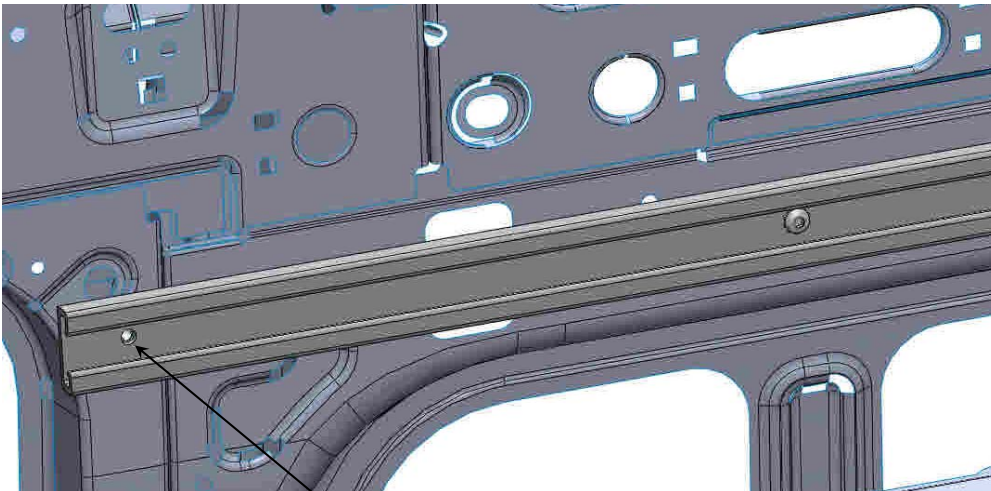
FAS0085 - 5/16 STAR WASHER (3)
FAS0741 - M8X1.25 X 30 LG (3)

EXISTING M8X1.25 INSERT
(3) LOCATIONS USED
CURB SIDE UPPER

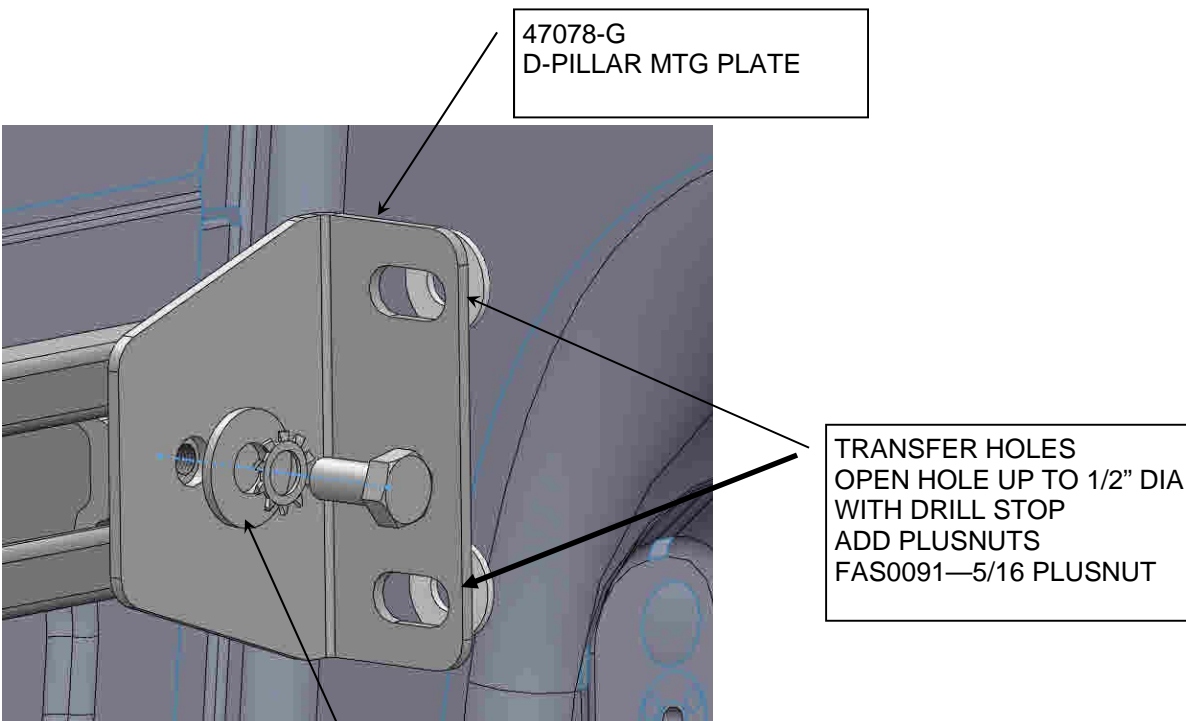
47082 RAIL 72", AD LWB, MR



- LOCATE AND TRANSFER HOLES



TRANSFER HOLE
OPEN HOLE UP TO 1/2" DIA
WITH DRILL STOP
ADD PLUSNUT
FAS0091—5/16 PLUSNUT

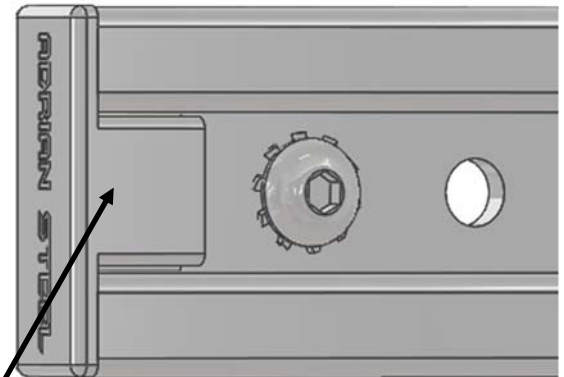
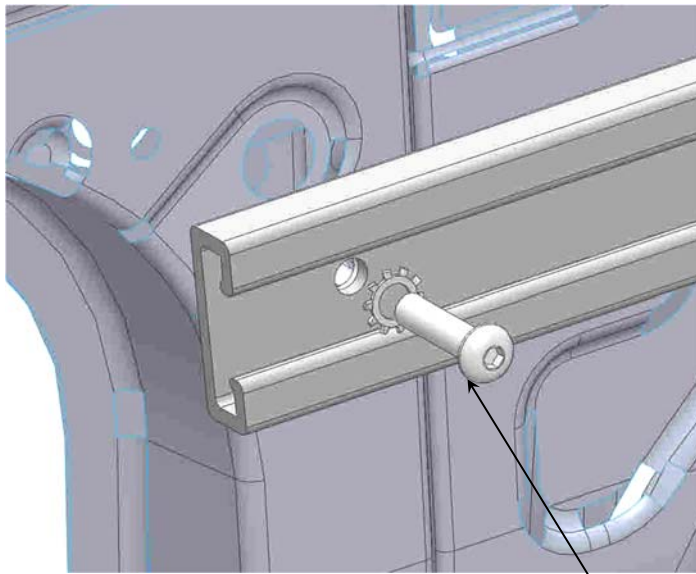


47078-G
D-PILLAR MTG PLATE

TRANSFER HOLES
OPEN HOLE UP TO 1/2" DIA
WITH DRILL STOP
ADD PLUSNUTS
FAS0091—5/16 PLUSNUT

35335-0 SLIDE
FAS0165— HEX HEAD
FAS0085—STAR WASHER
FAS0086—FLAT WASHER

- ADD CURB SIDE D-PILLAR MTG PLATE

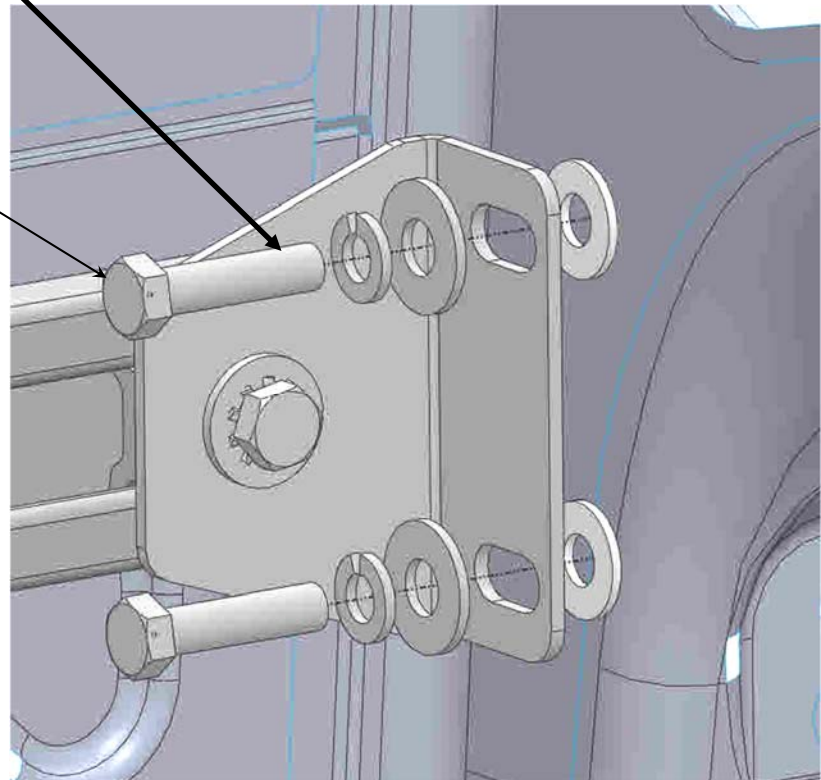


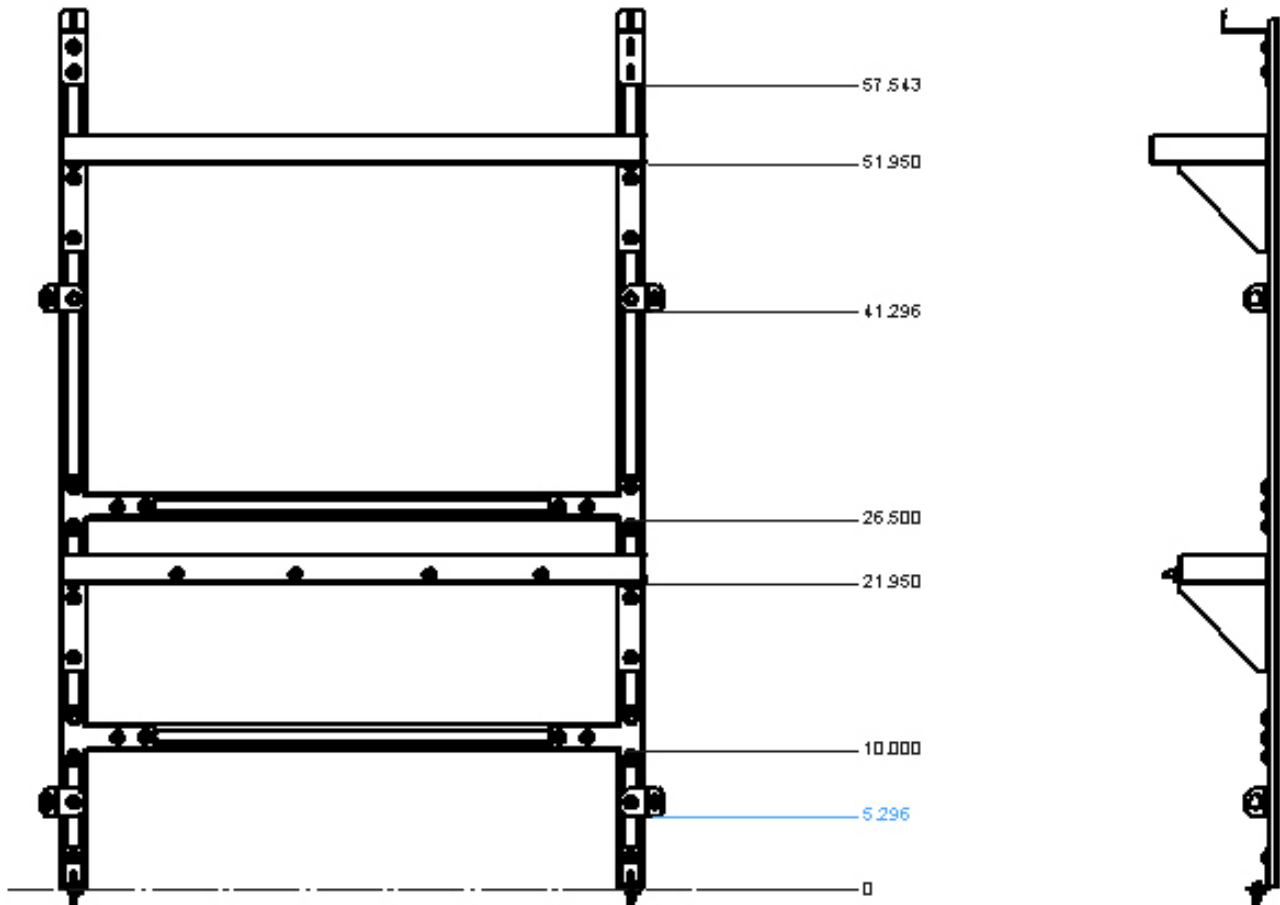
ADD PLASTIC END CAP 36496-0

47078-G D-PILLAR PLATE

FAS0708— BUTTON HD
FAS0085—STAR WASHER

FAS0093— HEX HEAD (2)
FAS0098—LOCK WASHER (2)
FAS0086—FLAT WASHER (2)

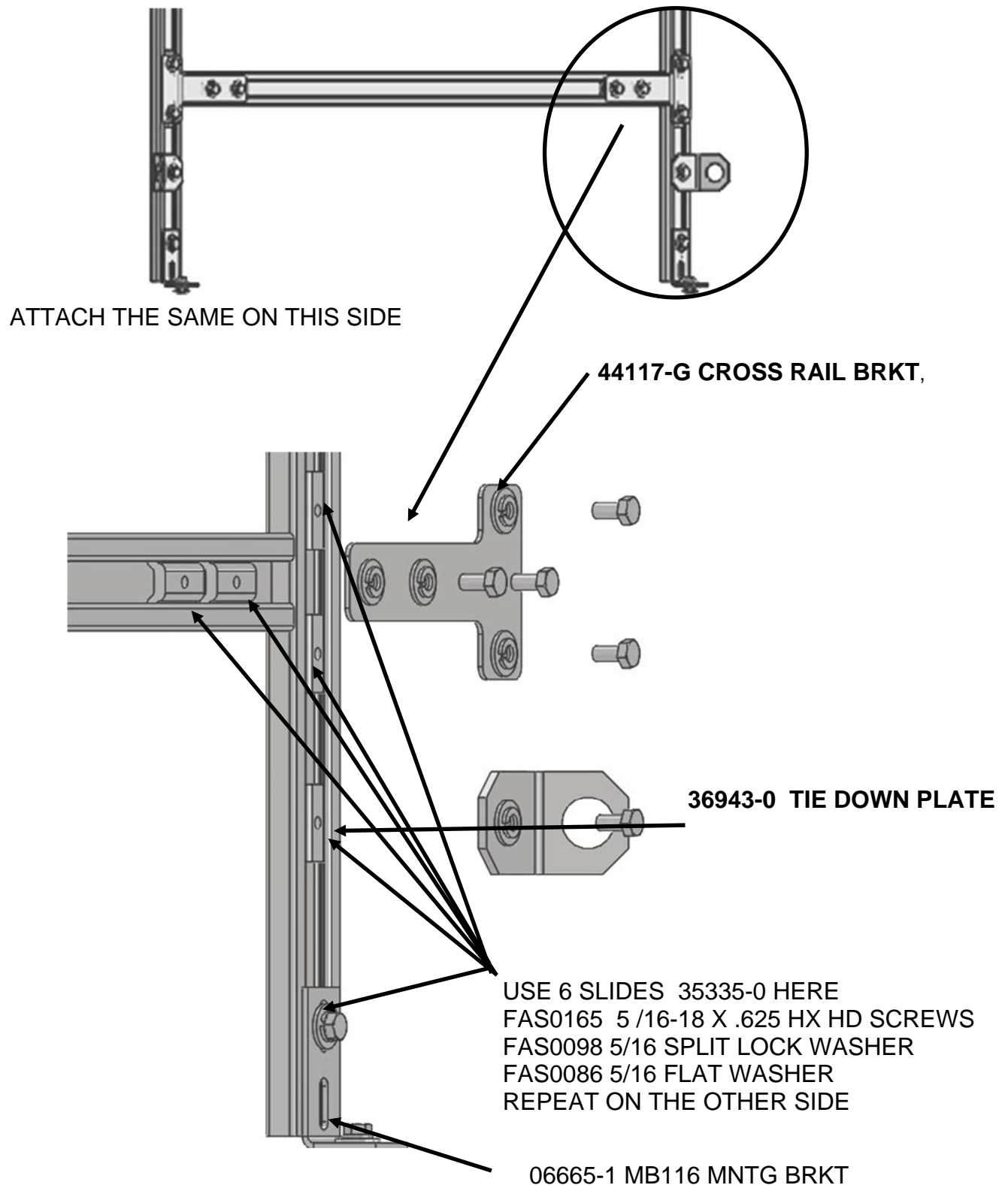




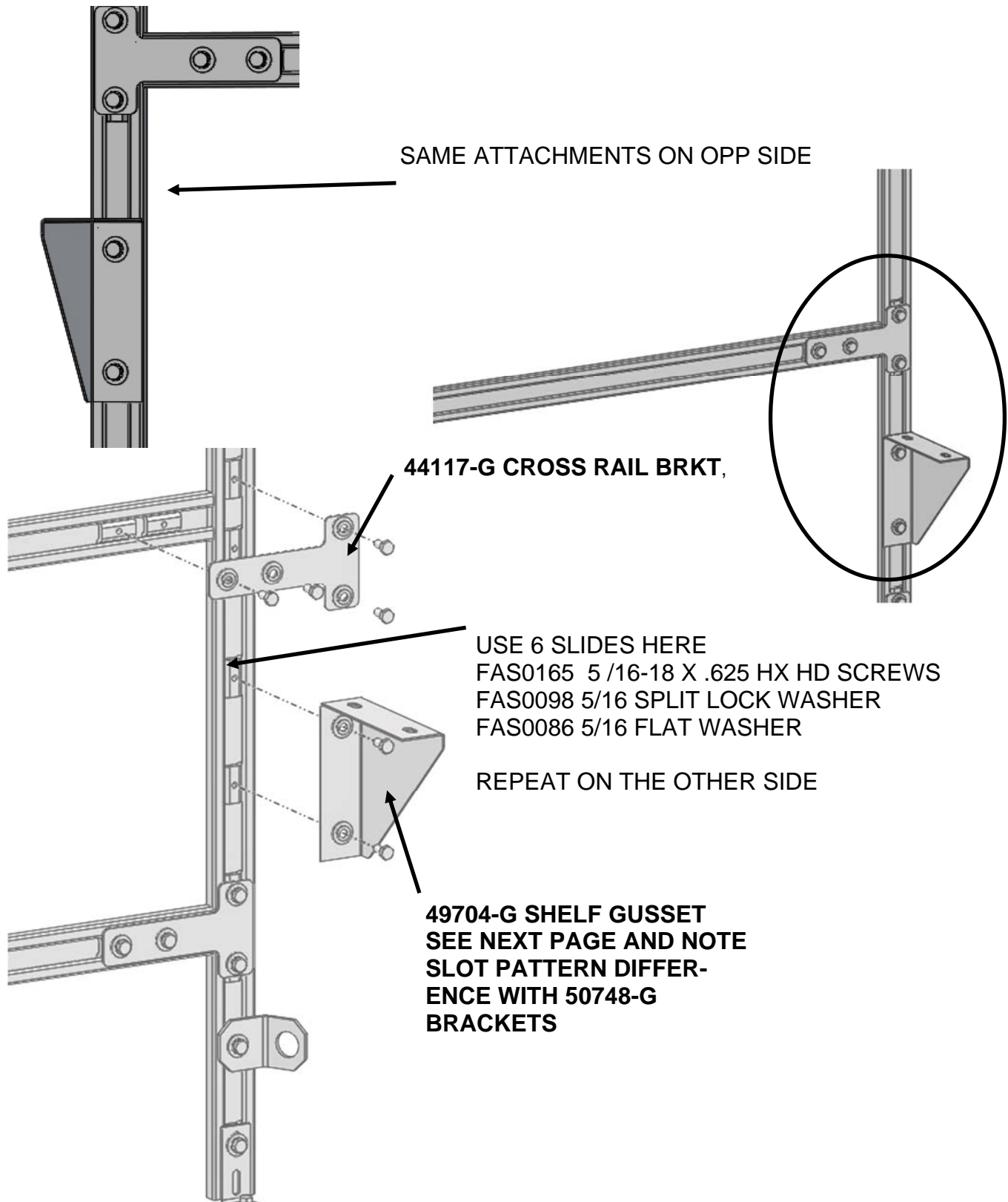
ADD SLIDES BEFORE FASTENERS WHERE NEEDED

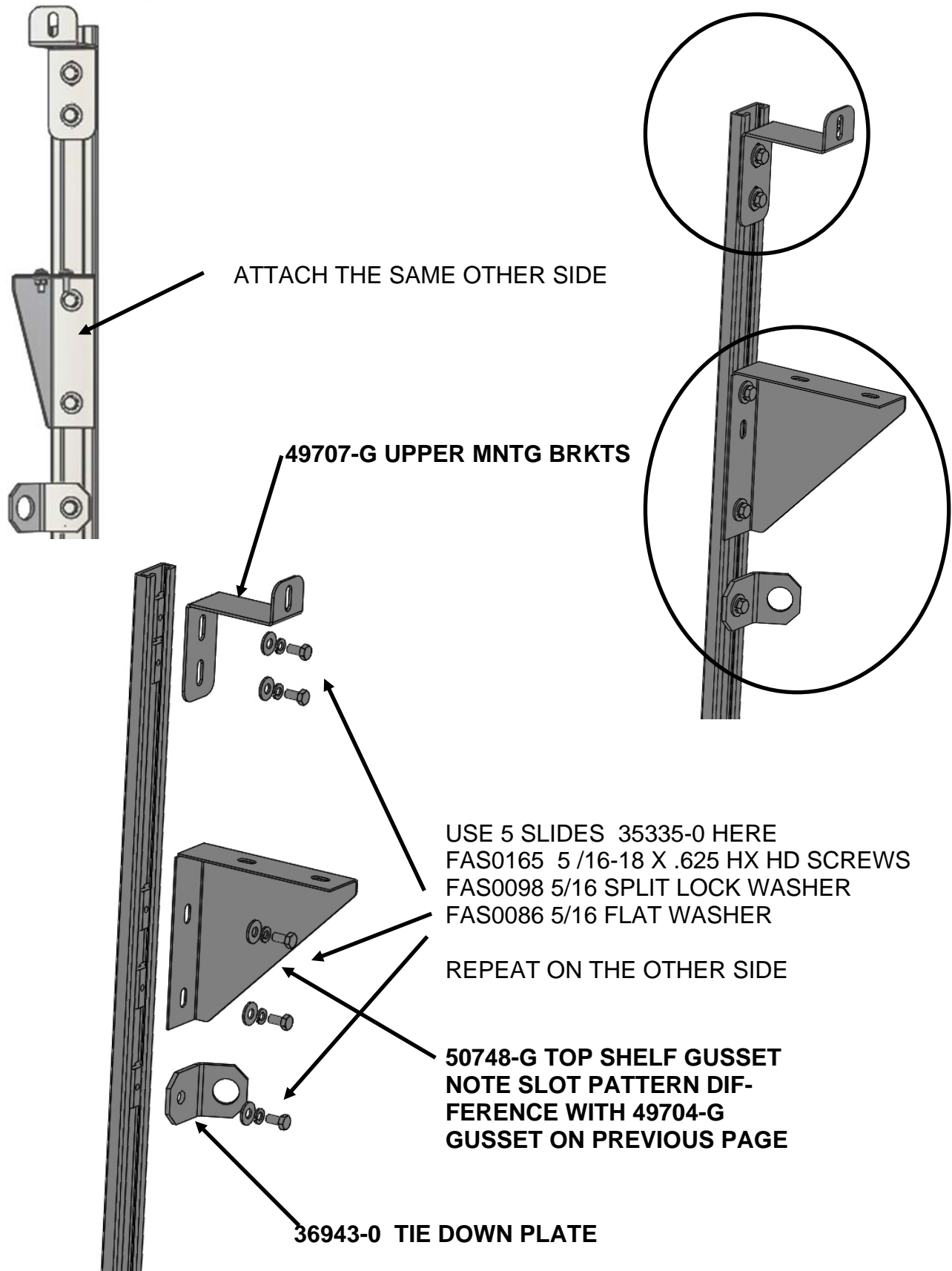
**SET UP TIE DOWN RACK TO THESE DIMENSIONS. EVERY THING IS
ADJUSTABLE EXCEPT THE LOWER SHELF WHICH FASTENS TO
THE BELT LINE OF THE VAN**

ATTACH LOWER PORTION OF TIE DOWN RACK



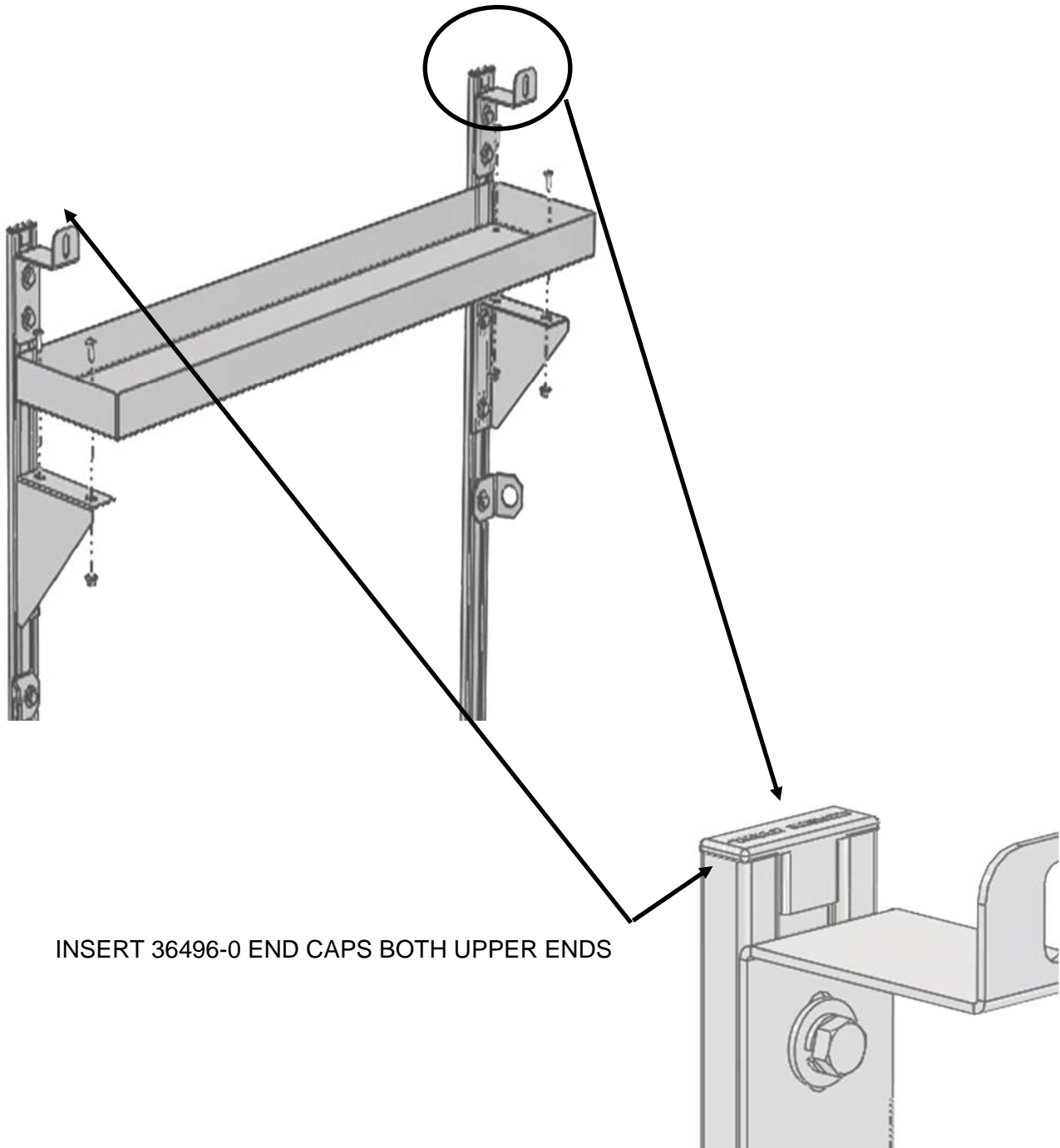
ATTACH MIDDLE PORTION OF TIE DOWN RACK





INSTALL UPPER SHELF 50747-G TO GUSSETS 50748-G

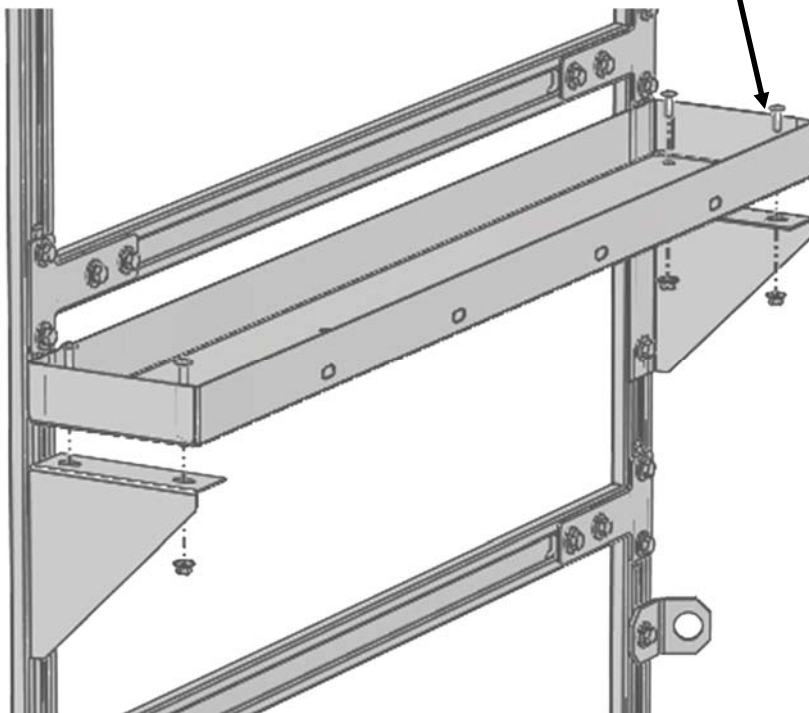
USING 4 EACH
FAS0061 1/4-20 X .50 TRUSS HS SCREWS
FAS0055 1/4-20 NYLOCK NUTS



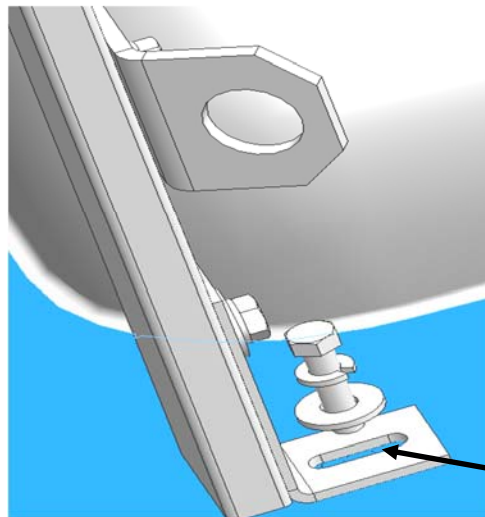
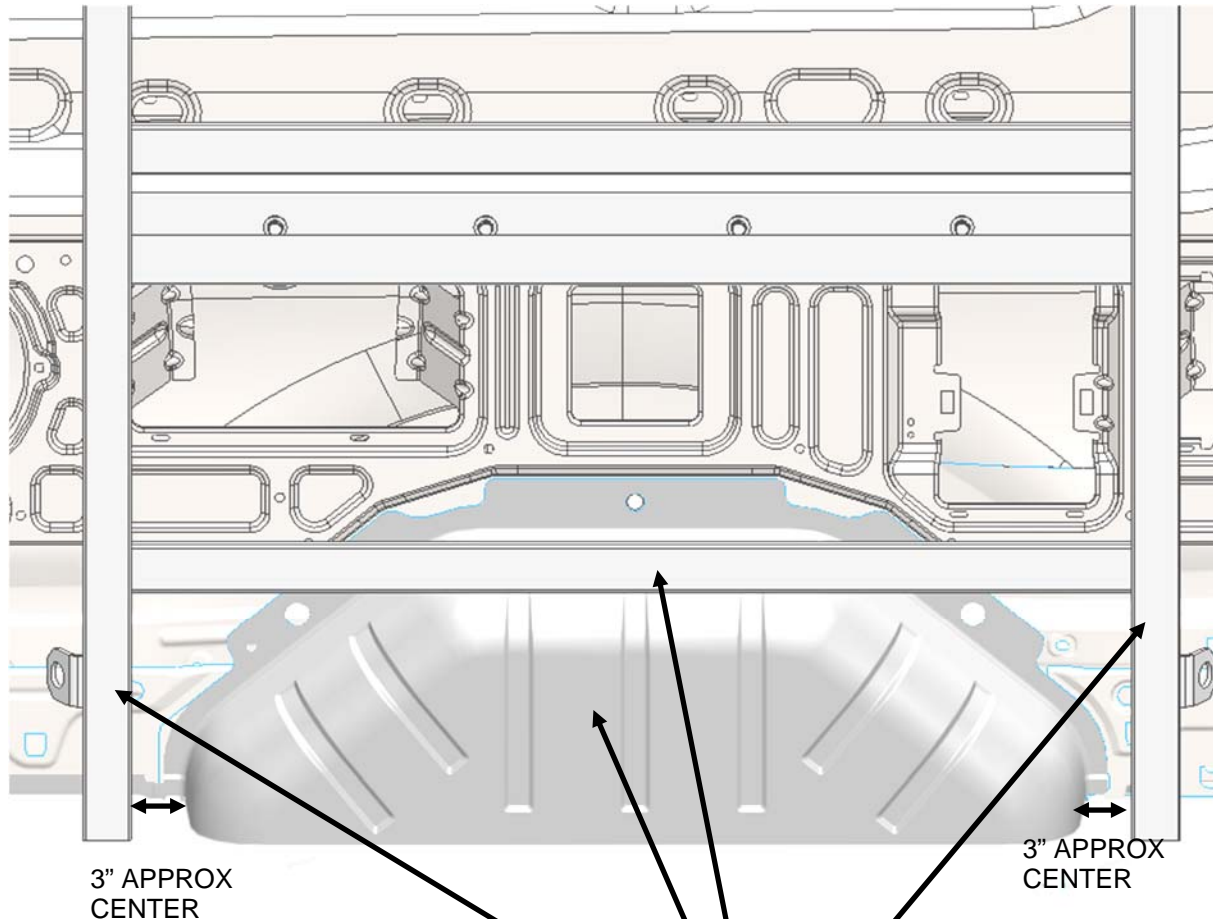
INSERT 36496-0 END CAPS BOTH UPPER ENDS

INSTALL LOWER SHELF 49708-G TO GUSSETS 49704-G

USING 4 EACH
FAS0061 1/4-20 X .50 TRUSS HS SCREWS
FAS0055 1/4-20 NYLOCK NUTS



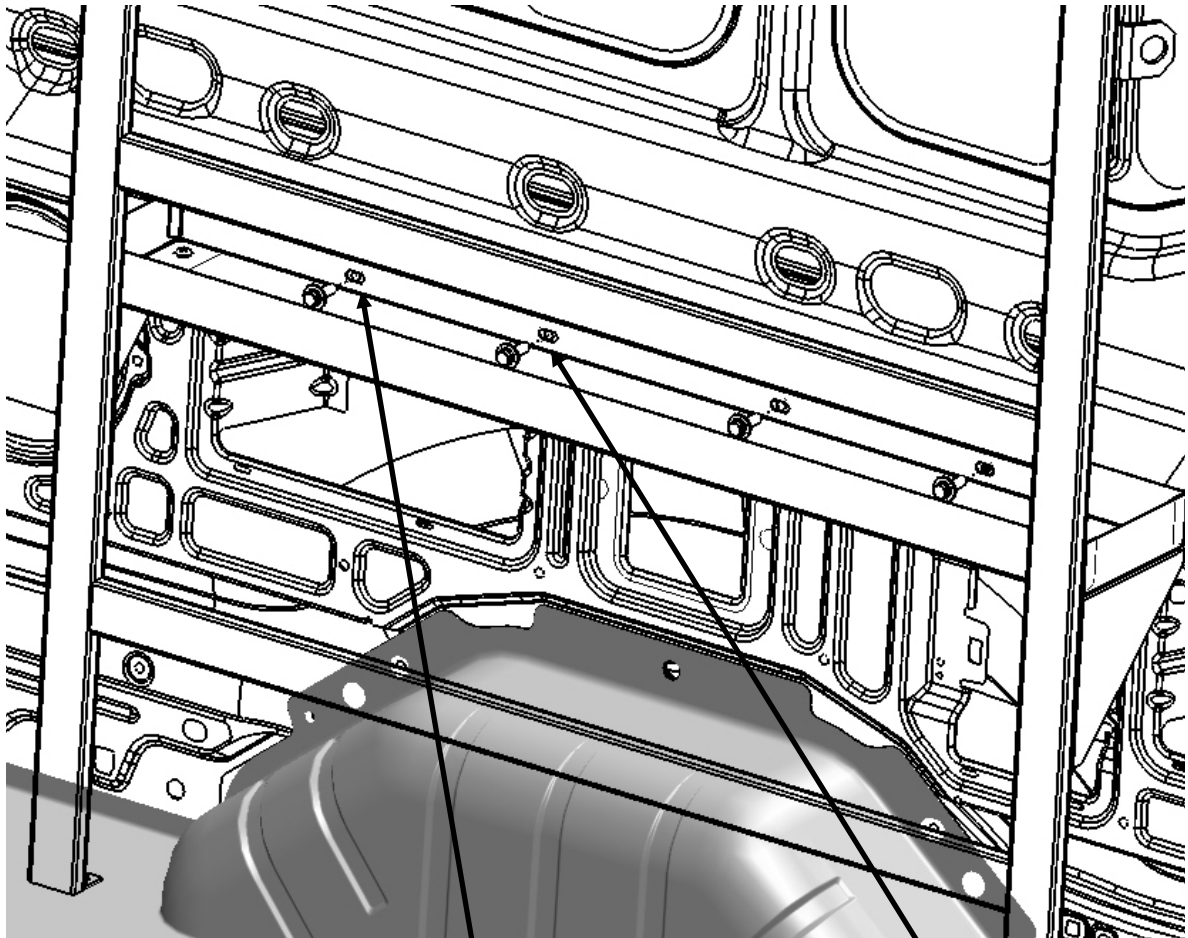
LINE UNIT UP AS SHOWN. SLOTS IN SHELF SHOULD LINE UP WITH HOLES IN VAN. MARK HOLES FOR FLOOR FROM 06665-1 MB116 BRACKET. DRILL AND SET PLUSNUTS IF FLOORING IS INSTALLED CUT HOLE IN FLOORING AND USE LARGE SPACER AND FAS0095 5/16-18 X 2.00 SCREWS.



MAKE REAR OF RAILS FLUSH WITH WHEEL WELL

ALIGN AT TOP RAIL, CENTER BOTTOM AROUND WHEEL WELLS AS SHOWN, MARK AND DRILL FOR FAS0091 5/16 PLUS NUT. INSTALL PLUS NUT. FASTEN USING
FAS0093 5/16-18 C 1.25 HX HD SCREW
FAS0098 5/16 SPLIT LOCK WASHER
FAS0086 5/16 FLAT WASHER
BOTH SIDES; IF FLOOR IS INSTALLED USE
FAS0095 5/16-18 X 2.0 HX HD SCREW
03927-2 TALL FLOOR SPACER UNDER
MB116 BRKT

LINE UP LOWER SHELF SLOTS TO THE HOLES ON THE VAN WALL.
SHELF IS ADJUSTABLE UP AND DOWN.
LINE UP UNIT APPROX 3" FROM WHEEL WELL CENTERED.
IF SLOTS LINE UP DRILL VAN WALL FOR 5/16 PLUS NUTS 4 PLACES
ATTACH (4) FAS0091 PLUS NUTS IF NOT TRANSFER FROM SLOTS TO WALL
THEN DRILL AND SET PLUS NUTS

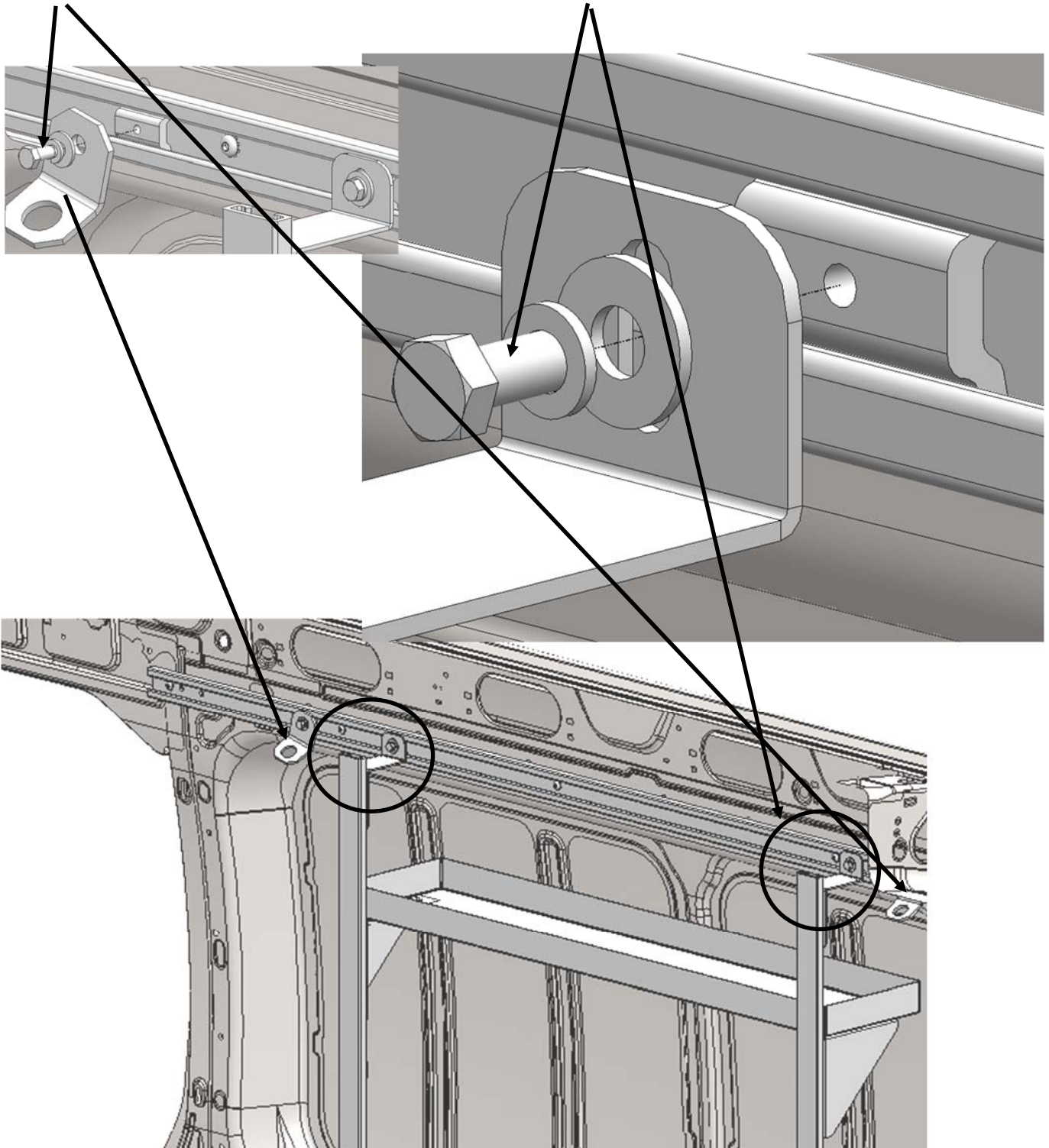


ATTACH USING
FAS0093 5/16-18 X 1.25 4 PLCS
FAS0098 5/16 SPLIT LOCK WASHER 4 PLCS
FAS0086 5/16 FLAT WASHER 4 PLACES 4 PLCS

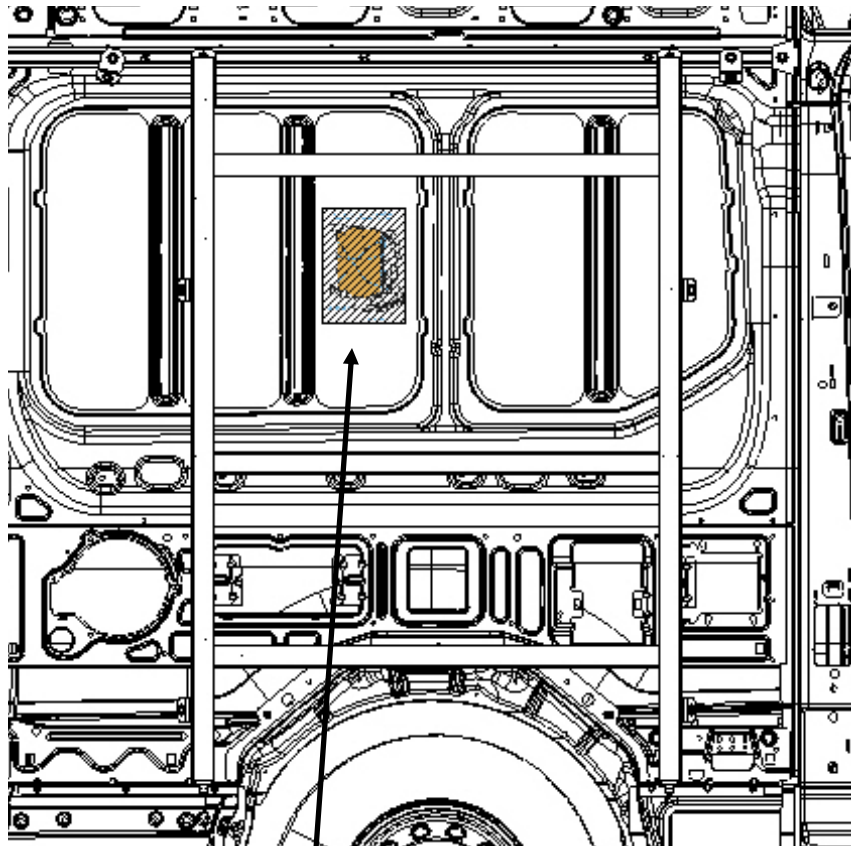
STAND UNIT ON FLOOR ATTACH TO UPPER SLIDES IN RAIL AS SHOWN BOTH SIDES

ATTACH TO TIE DOWN PLATE AS SHOWN USING
FAS0165 5/16-18 X .625 HX HD SCREWS
FAS0098 5/16 SPLIT LOCK WASHER
FAS0086 5/16 FLAT WASHER
REPEAT ON REAR END OF RAIL

ATTACH TO SLIDE AS SHOWN USING
BOTH SIDES
FAS0165 5/16-18 X .625 HX HD SCREWS
FAS0098 5/16 SPLIT LOCK WASHER
FAS0086 5/16 FLAT WASHER



PLACE 48749 TDRFT148 LABEL ON WALL AS SHOWN



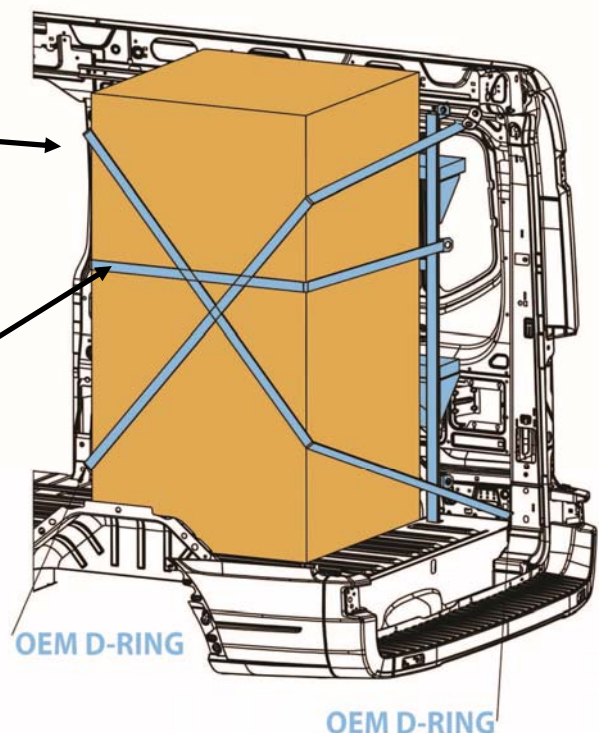
**TIE DOWN METHOD FOR ITEMS OVER
150 LBS. OR LARGER APPLIANCES**

**48749, TDRFT148, STICKER
LABEL 5" X 7" APPLY TO INSIDE WALL CS
BETWEEN RAILS OF TIE DOWN RACK
AS SHOWN ABOVE.**

**NOTE : IF TDKDSK FOLD-DOWN DESK IS
BEING USED, PLACE THIS LABEL ON UN-
DERSIDE OF DESK SO IT IS VISIBLE WHEN
DESK IS STOWED AND NOT IN USE.**

**24772-0 STRAP, NYLON,
1 X 120" RACHET QTY (4)**

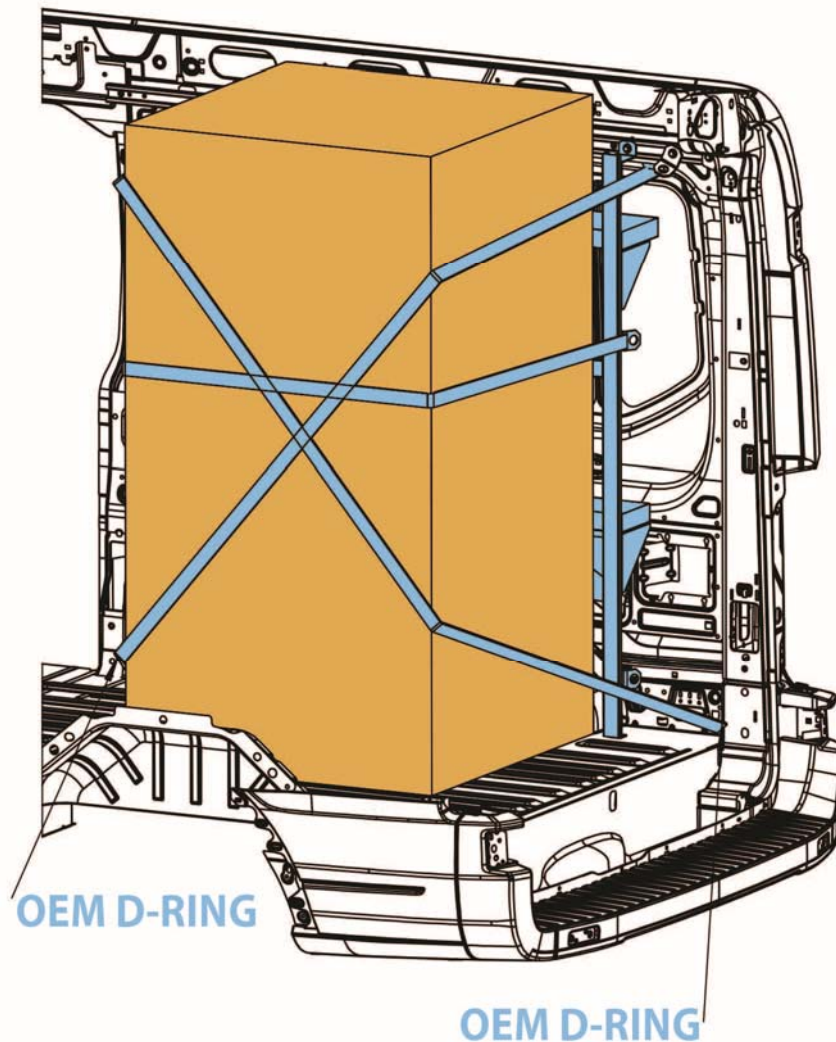
**STORE ON LOWER SHELF
WHEN NOT BEING USED**



**TDRFT148,
TIE DOWN RACK, 2015 FORD TRANSIT MR, HR,**

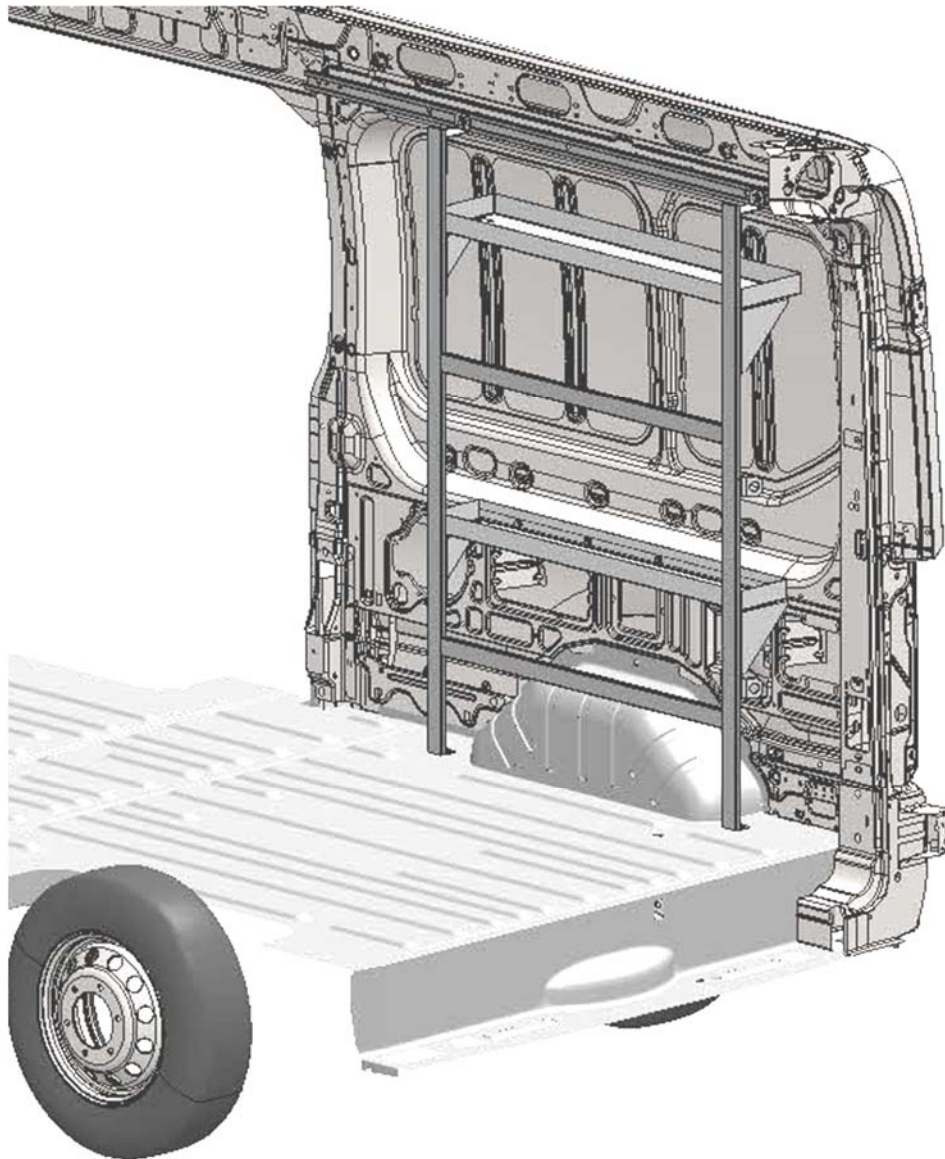
**BE SURE TO ATTACH THIS LABEL TO THE INSIDE WALL
OF THE VAN IN PLAIN SIGHT FOR OPERATORS**

**TIE DOWN METHOD FOR ITEMS OVER
150 LBS. OR LARGER APPLIANCES**



**TDRFT148,
TIE DOWN RACK, 2015 FORD TRANSIT MR, HR,**

YOUR INSTALLATION IS NOW COMPLETE



**DOUBLE CHECK ALL FASTENER LOCATIONS TO BE SURE THAT ALL
FASTENERS ARE TIGHTENED TO SPECIFICATIONS.
YOUR INSTALLATION IS NOW COMPLETE!
STOW THIS COPY IN THE VEHICLE FOR FUTURE REFERENCES!**

ITEM DESCRIPTION: RATCHET STRAP, 1"x120" WITH WIRE HOOKS

MANUFACTURER: ACME LIFTING PRODUCTS INC
 MANUFACTURERS PART NUMBER: CAP50#20-41

SPECIFICATIONS: 1" x 120" NYLON STRAP
 HOOKS ON EACH END
 RATCHETING ACTION TIGHTENS
 OR LOOSENS THE STRAP
 WITH 48" FIXED RATCHET END
 COLOR: LT. BLUE
 WORKING LOAD: 500#
 BREAKING STRENGTH: 1500#

SPECIAL NOTES: MANUFACTURER'S NUMBER: #20-P50-L1L1-48"-10'

SUPPLIED BY: THIS ITEM IS ADRIAN AVAILABLE!

PURCHASED PRODUCT DATA SHEET (PPDS)

THIS DRAWING/INFORMATION IS THE PROPERTY OF ADRIAN STEEL COMPANY AND IS NOT TO BE USED IN ANY MANNER THAT IS DETRIMENTAL TO THE INTEREST OF ADRIAN STEEL. COPYRIGHTS AND OR PATENTS THAT MAY BE THE PROPERTY OF APPLICABLE OWNERS MAY PROTECT INFORMATION AND/OR DRAWINGS OF SUPPLIED PRODUCTS.



ADRIAN STEEL
 VAN AND PICKUP EQUIPMENT

906 JAMES STREET
 ADRIAN, MI 49221
 517-265-6194
 WWW.ADRIANSTEEL.COM



CAUTION
 WHEN INSTALLING EQUIPMENT IN OR ON
 VEHICLES CHECK FOR FUEL TANKS, FUEL
 LINES, CONTROL LINES AND ELECTRICAL
 WIRING BEFORE DRILLING! ALWAYS USE
 DRILL BITS WITH INTEGRAL STOPS
 WHENEVER POSSIBLE!

DRAWN BY
 APG

DATE DRAWN
 01/03/2006

ECN NUMBER
 19756

ECN DATE
 05/26/2017

PART WEIGHT
 0.00 LBS.

REV. LEVEL
 D

PART NUMBER
24772-0

TIE DOWN METHOD FOR ITEMS OVER 150 LBS. OR LARGER APPLIANCES

