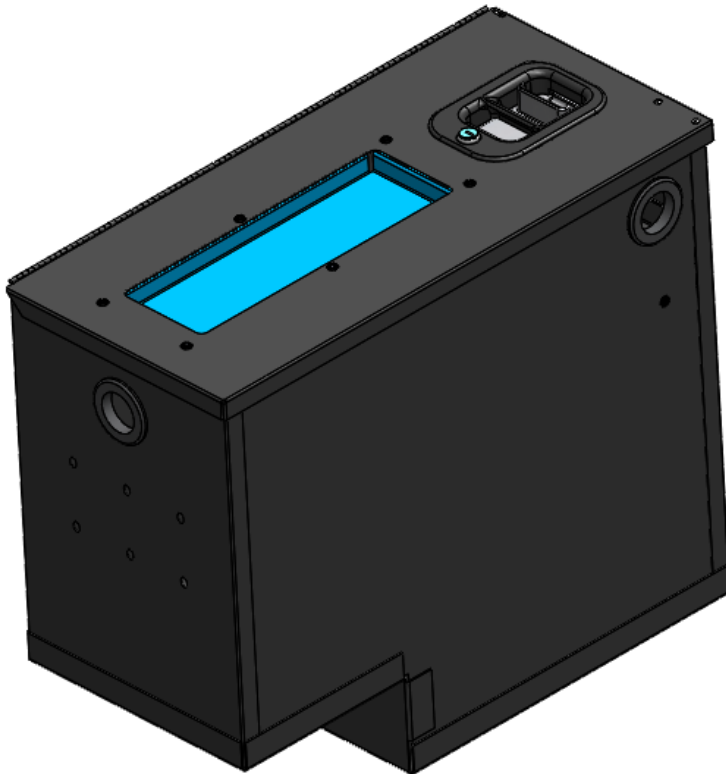


TDC10 - Promaster Tech Desk, 10"



PRODUCT WEIGHT
40 LBS

WIDTH x DEPTH x HEIGHT
10" x 22" x 19"

CAPACITY
USER DEFINED

COLOR
BLACK AND BLUE

CATALOG NUMBER
TDC10

PRODUCT FEATURES

TECH DESK CENTER CONSOLE DESIGNED FOR 2014 AND NEWER RAM PROMASTER (ALL HEIGHTS AND WHEELBASES). CONSOLE COMES WITH A LOCKING LID, NON SLIP TOP TRAY, INTERNAL ELECTRONICS STORAGE SPACE, USB CHARGING PORTS, AND LIGHTS UP WHEN OPEN.

NOTE: INSTALLATION REQUIRES THE REMOVAL OF SOME VEHICLE AND FRONT DASH COMPONENTS.

This product doesn't work with a swivel seat installed



CATALOG NUMBER

PRODUCT APPLICATION

This product is designed to be installed using ad rail mounting in full size vans.

ACCESSORIES THAT WILL WORK WITH THIS PRODUCT

CATALOG NUMBER

DESCRIPTION

SPECIAL APPLICATION NOTES

Introduction / Comments:

This Tech Desk Center Console is designed for storage of chargers, power strip, and miscellaneous electronics/items.

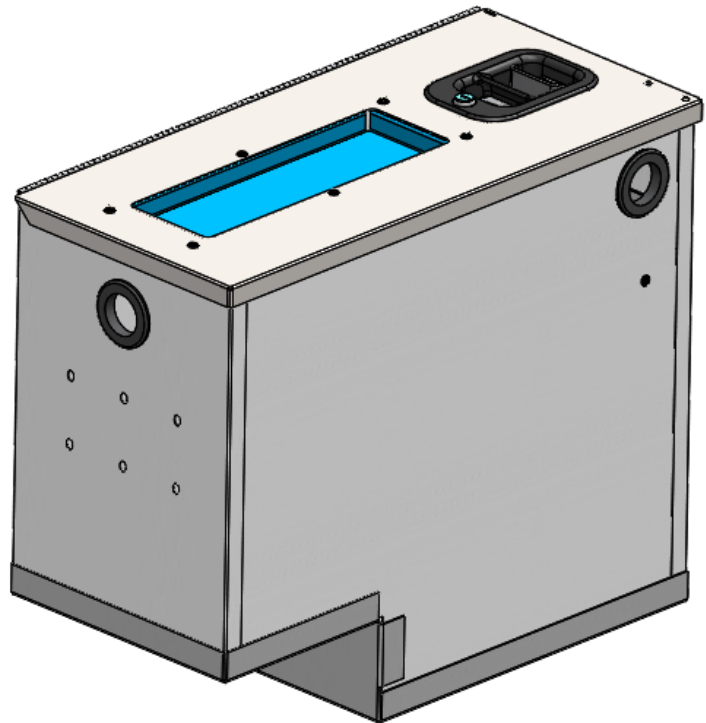
Note: It is advised that all fasteners used in this assembly and installation should be checked for tightness at the following intervals: @ 2-weeks and again @ 6-weeks of operation. This preventive maintenance step must be completed to ensure your Product gives you long service life.



WARNING!
DISCONNECT THE
VEHICLE BATTERY
BEFORE STARTING
THE INSTALL

NOTE: THE TDC10 IS DESIGNED TO ONLY WORK WHILE THE VEHICLE IS ON, THIS IS TO SAVE THE BATTERY FOR DYING IF A DEVICE IS LEFT PLUGGED IN.

NOTE: THE TDC10 WILL WORK WITH BOTH COMPOSIT AND STEEL PARTTIONS (AND STEEL PARTITION WITH LONG PARTS STORAGE) *SEE PAGE *** FOR DETAILS* - IT IS RECOMMENDED THAT THE TDC10 IS INSTALLED BEFORE INSTALLING A PARTITION FOR EASE OF ASSEMBLY.

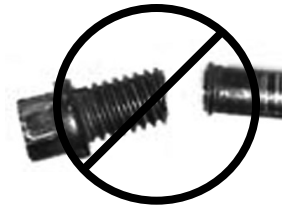


**TECH DESK CENTER CONSOLE DESK FOR
MISC USE.**

- PRECAUTIONS -





 **CAUTION** 
**THE USE OF AIR IMPACT TOOLS CAN
OVER-TORQUE FASTENERS AND
CAUSE FASTENER FAILURE!**



 **CAUTION** 
**ALL INSTALLATION HOLES SHOULD BE SEALED
WITH SILICON OR BUTYL SEALANT TO PREVENT
EXHAUST FUMES FROM ENTERING THE VEHICLE!**



 **DANGER** 
**INSPECT FOR FUEL TANK, FUEL LINES, BRAKE LINES, HIGH
VOLTAGE BATTERIES AND ELECTRICAL LINES PRIOR TO
DRILLING TO AVOID DAMAGING CRITICAL VEHICLE SYSTEMS
OR INJURY TO INSTALLER DURING INSTALLATION PROCESS!**



 **CAUTION** 
**TO AVOID DAMAGING THE VEHICLE ALWAYS
USE DRILL STOPS WHEN DRILLING ANY IN-
STALLATION HOLES!**



- IMPORTANT WARRANTY REQUIREMENTS -

1. SUBSTITUTING ADRIAN STEEL SPECIFIED FASTENERS FOR ASSEMBLY AND/OR INSTALLATION WILL VOID YOUR PRODUCT WARRANTY.
2. ALL HOLES DRILLED INTO VEHICLE SHOULD HAVE THE RAW METAL EDGES SEALED WITH A SELF-ETCHING PRIMER TO RESIST CORROSION AND POTENTIAL FASTENER POINT FAILURE.
3. ALL FASTENERS USED IN THE INSTALLATION OF THIS PRODUCT SHOULD BE TIGHTENED TO THE TORQUE(S) SPECIFIED IN THESE INSTRUCTIONS.
4. THESE INSTRUCTIONS SHOULD BE KEPT WITH THE VEHICLE.

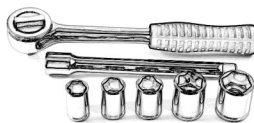
THE BASIC TOOLS NEEDED FOR MOST INSTALLATIONS



DRILL



DRILL BIT WITH
STOP



RATCHET, SOCKETS
AND/OR WRENCHES



SCREWDRIVERS



MEASURING TAPE

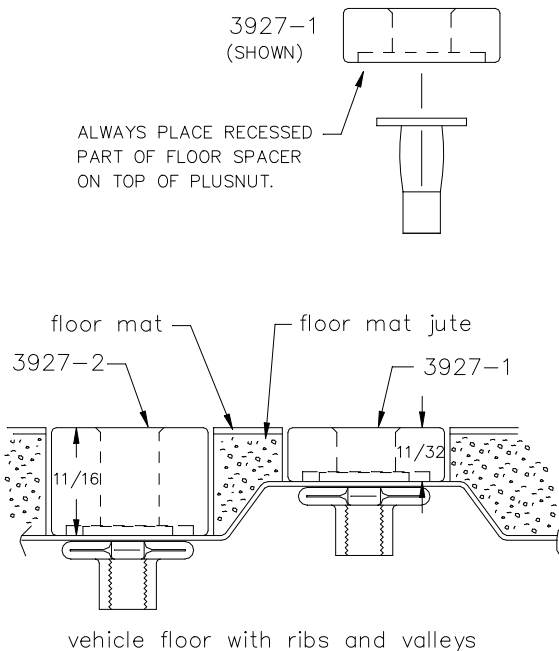
ADDITIONAL TOOLS MAY BE NEEDED FOR THIS INSTALLATION AND THEY WILL BE IDENTIFIED IN THE STEPS THAT FOLLOW.



If your vehicle contains carpet or a rubber floor mat you will need to prepare the mounting location. Position the product to be installed into the vehicle and once you are satisfied with the mounting locations, mark the mounting locations. Using a 1-3/16" diameter carpet cutter (P/N: 31183-0). Select the appropriate floor spacers as shown in the illustration. Set those aside for use later into the installation process. Using the correct drill bit size for the selected plusnut, drill the mounting holes in the vehicle sheet metal to prepare for installing the plusnuts.

If you are thru-bolting at any of the locations simply drill a hole that is 1/16" larger than the bolt size(s) for those locations.

Once you have drilled the holes into the vehicle, the raw metal edges should be sealed using a self-etching primer to resist corrosion and potential fastener point failure.



A PLUSNUT (RIVNUT) SETTING TOOL IS REQUIRED FOR PLUSNUT (RIVNUT) INSTALLATION AND IS SUPPLIED WITH THIS KIT. OR USE AN AIR POWERED PLUSNUT SETTING GUN.

1/4-20UNC Plusnut (FAS0052) Use 3/8" dia. drill w/stop

FAS0080 SCREW, HXHD, 1/4-20UNCx2.00", G8

FAS0067 WASHER, FLAT, 1/4"ID

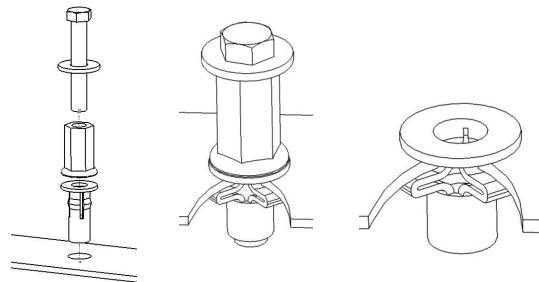
22200-0 PLUSNUT TOOL

5/16-18UNC Plusnut (FAS0091) Use 1/2" dia. drill w/stop

FAS0095 SCREW, HXHD, 5/16-18UNCx2.00", G8

FAS0086 WASHER, FLAT, 5/16"ID

22200-0 PLUSNUT TOOL



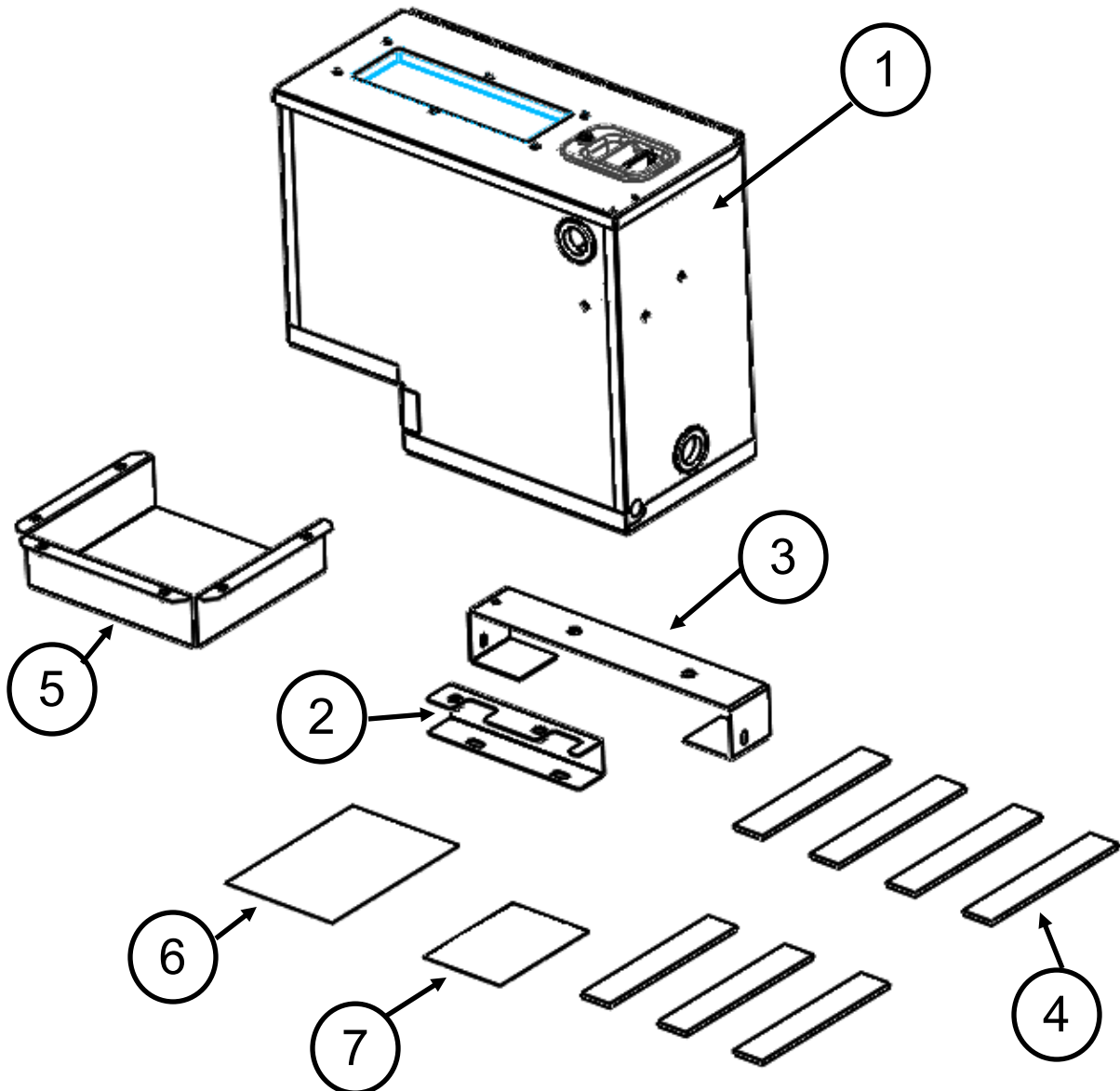
Place barrel of the plusnut body in sheet metal thru hole until flange is flush with sheet metal.

Using a 9/16" combination wrench of plusnut tool body and a second hand wrench, ratchet, or air tool, rotate the hex bolt head CW to draw plus nut flanges up (set the plusnut).



TDC10—TECH DESK CENTER CONSOLE FOR PROMASTER

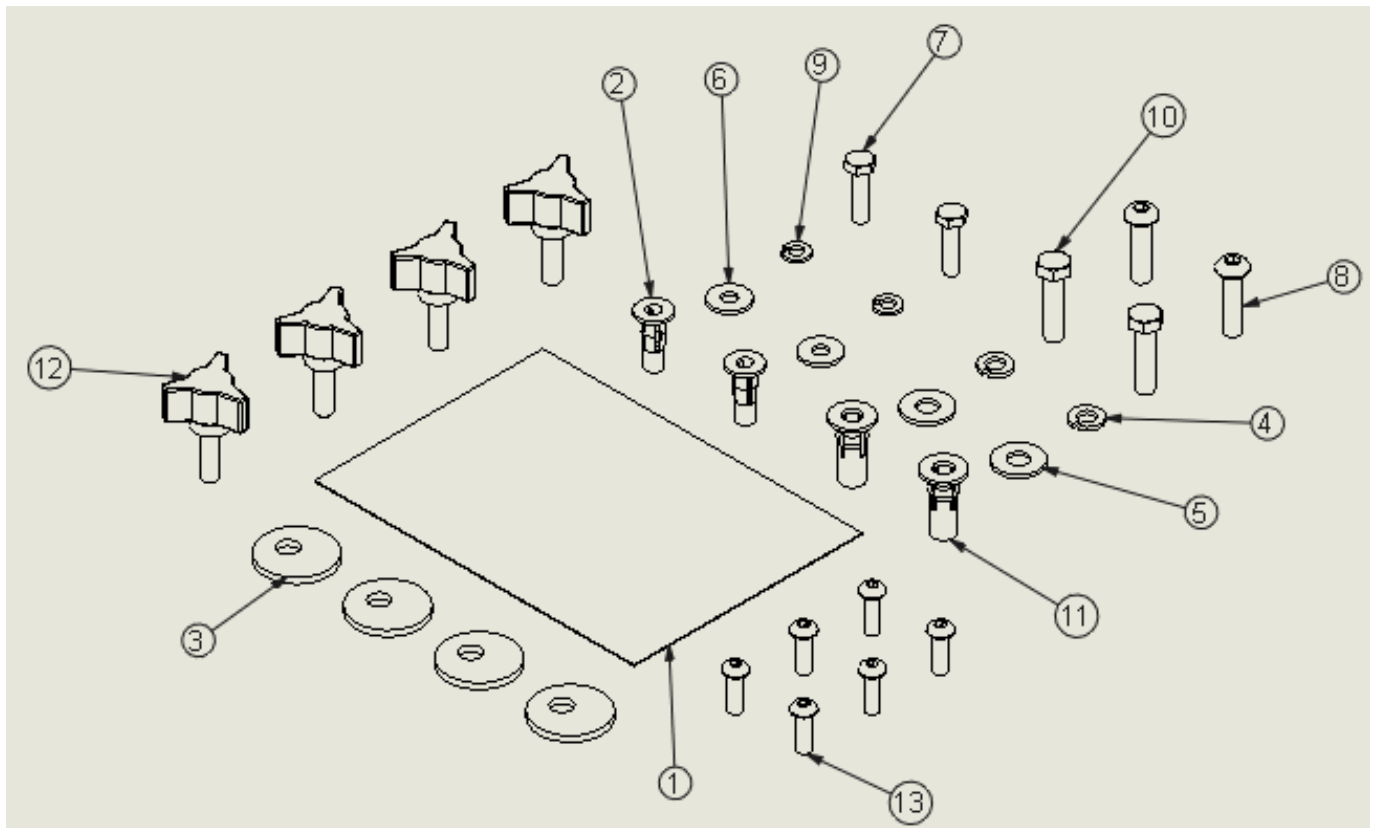
ITEM #	PART #	PART DESCRIPTION	QTY.
1	56686	TECH DESK 10", ASSEMBLY	1
2	45690-B	REAR MNTG BRKT ASSY	1
3	45593-B	FRONT MNTG BRKT ASSY	1
4	57201	GASKET, TDCLTH, 10"	7
5	47891-B	LAPTOP HOLDER BRKT ASSY	1
6	57176	TDC10, PROMASTER WIRE HARNESS	1
7	BAGTDC10	FASTENER BAG FOR TDC10	1





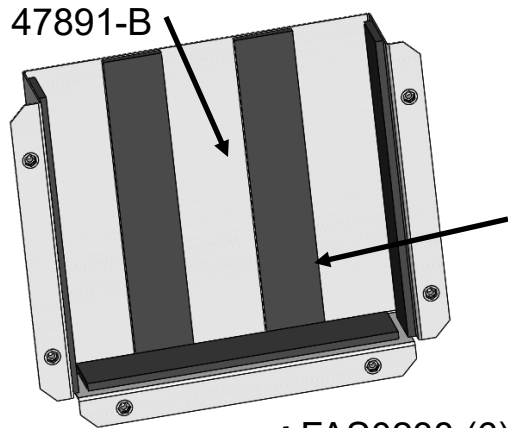
BAGTDC10 FASTENER BAG FOR TDC10

ITEM NO.	PART NUMBER	DESCRIPTION	BAGTDC10/QTY.
1	BAG0507-A	5" x 7" 3MIL AUTOBAG	1
2	FA00052	Plusnut, 1/4	2
3	21166-0	ECCENTRIC WASHER	4
4	FA00098	Washer, Lock, Split, 5/16, Zinc Plate	2
5	FA00112	Washer, Flat, 5/16, NI ZN	2
6	FA00067	Washer, Flat, 1/4	2
7	FA00078	Screw, Hex Hd, 1/4-20x1.00 Zn Plate, Grade 8	2
8	FA00727	Screw, Button Hd Hex Soc, M8-1.25 X 30	2
9	FA00060	Washer, Lock, Split, 1/4	2
10	FA00587	Screw, Hex Hd, 5/16-18x1.25, Zn-Ni (1000 hour), Grade 5	2
11	FA00091	Plusnut, 5/16	2
12	FA00760	KNOB 5/16-18 X 1	4
13	FA00238	Screw, Button Hd Hex Soc, 1/4-20x0.75 BK	6

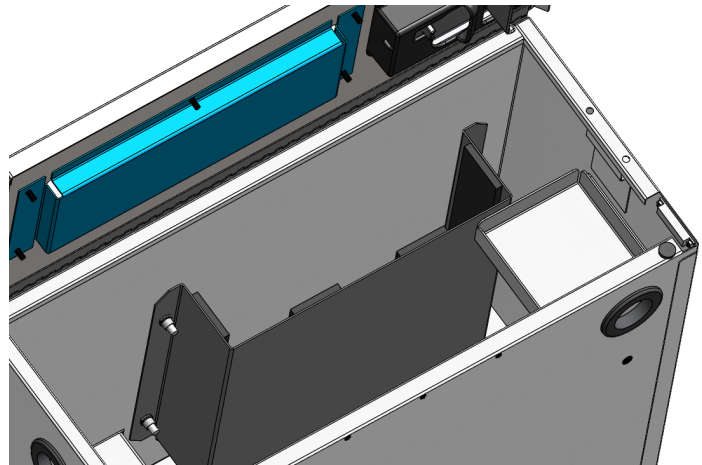
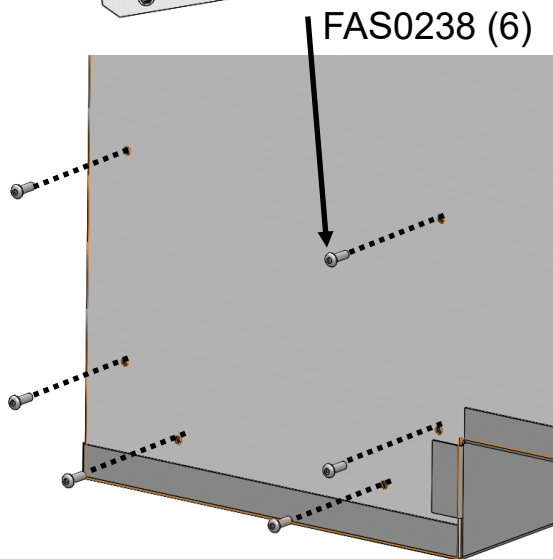




ADD FOAM STRIPS TO LAP TOP HOLDER (47891-B) AND FASTEN TO THE TDC10 WITH FAS0238 (6)

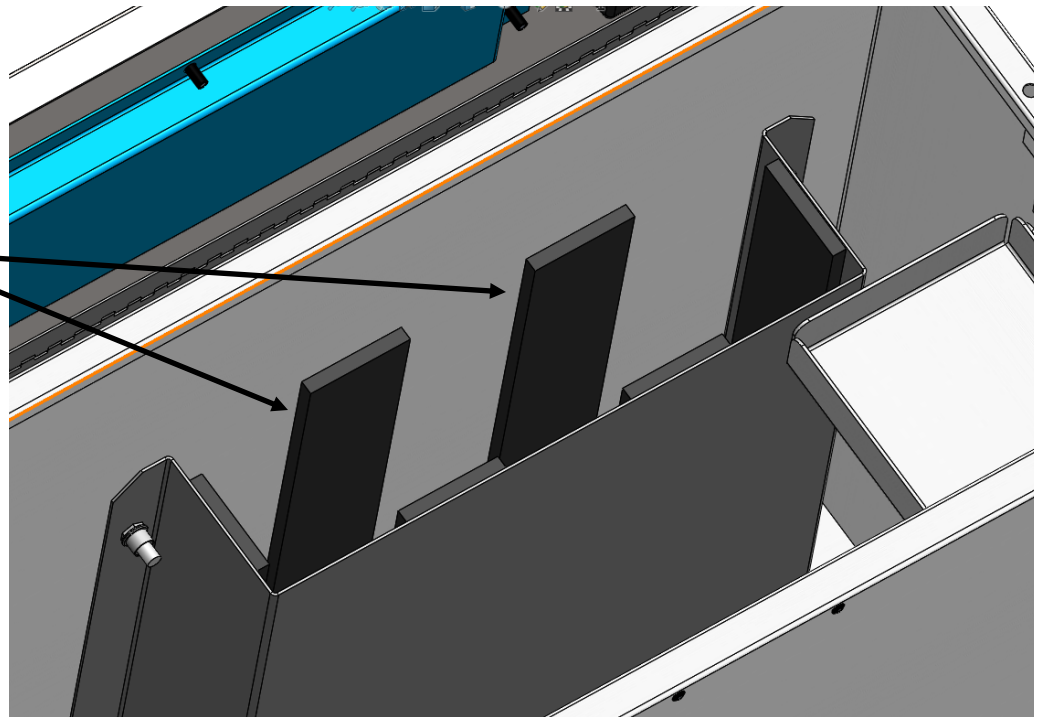


NOTE: (2) OF THE 57201 FOAM STRIPS WILL BE STUCK ONTO THE TDC10 BODY AFTER THE 47891-B LAP TOP HOLDER IS FASTENED DOWN.



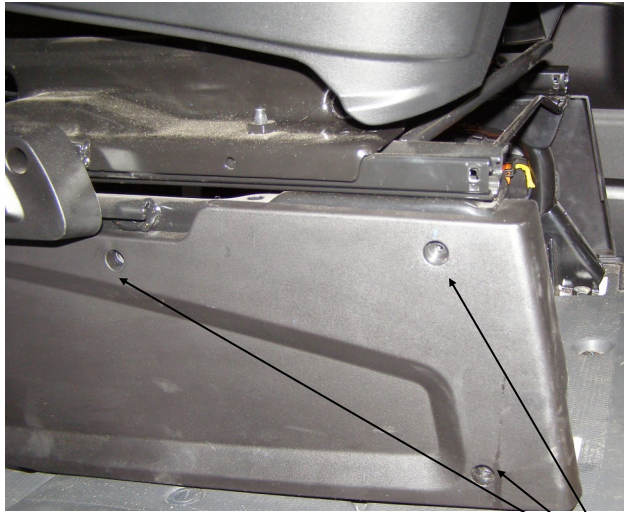
57201 (2)

NOTE: STICK LAST (2) FOAM STRIPS TO THE TDC10 BODY AS SHOWN

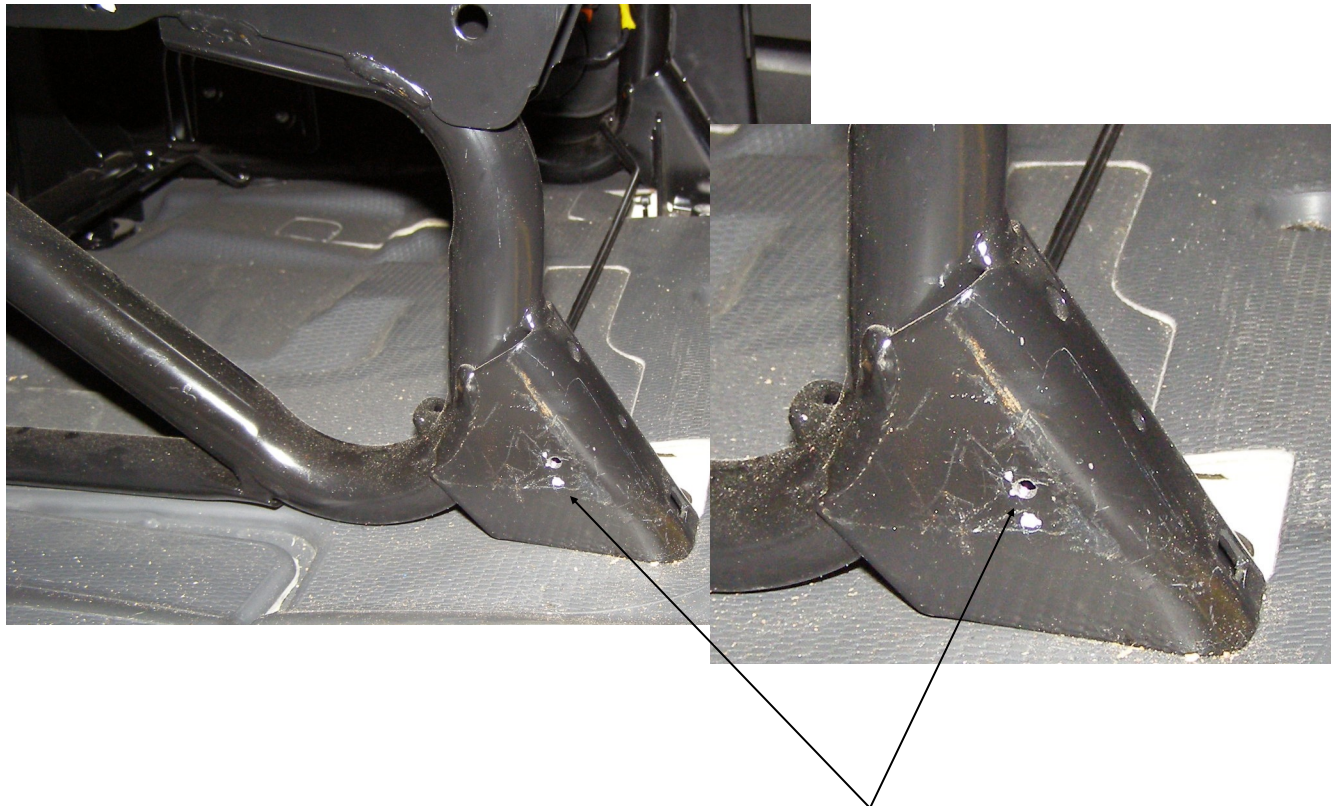




REMOVE SEAT TRIM AND INSTALL FAS0052 1/4" PLUSNUT IN FRONT SEAT LOWER BRACKETS



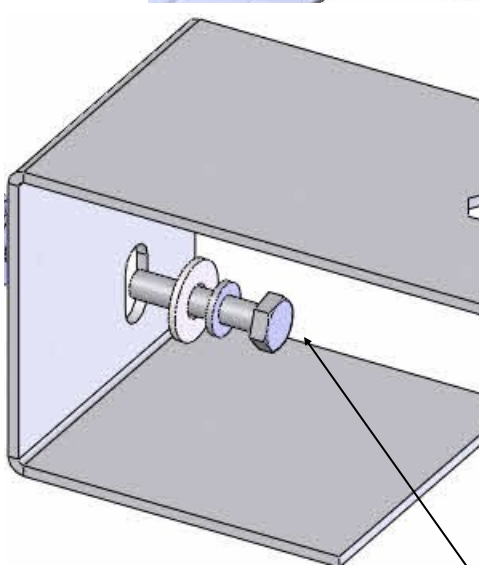
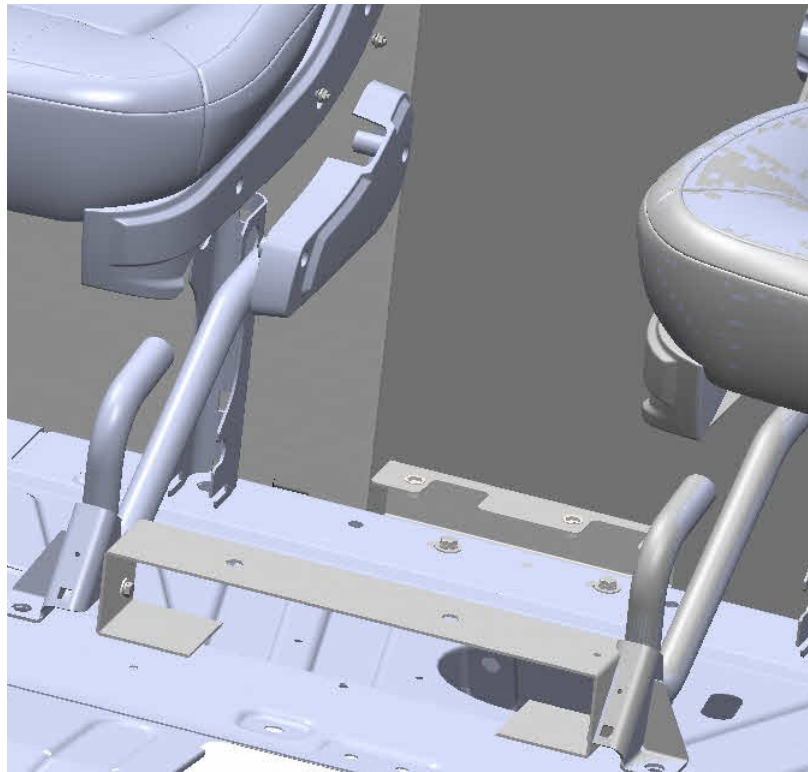
USE PHILLIPS SCREWDRIVER AND REMOVE (3)
SCREWS. PULL TRIM AWAY AND STORE
SCREWS AND TRIM PARTS FROM BOTH SEATS



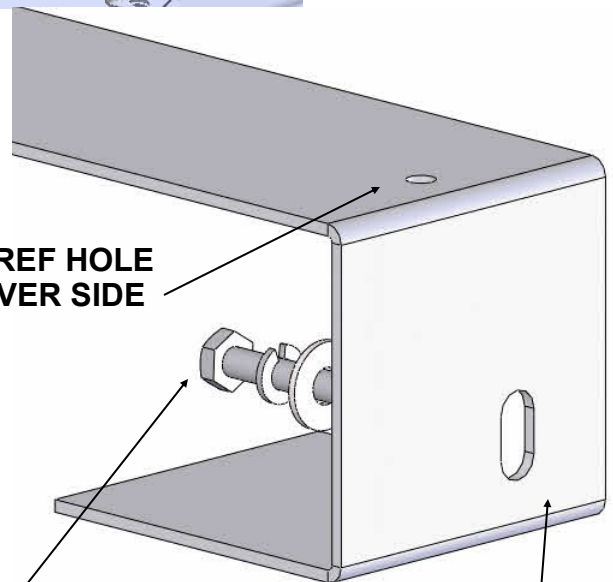
DRILL THRU EXISTING HOLE WITH A 3/8" DRILL W/STOP AS SHOWN ON PAGE 3
INSERT FAS0052 PLUSNUT ON EACH SEAT BRACKET



**INSTALL FRONT MNTG BRKT ASS'Y (45693-B)
BETWEEN FRONT SEATS USING THE PLUSNUTS YOU JUST INSTALLED**



**NOTE: REF HOLE
ON DRIVER SIDE**



NOTE: SLOT TO THE REAR

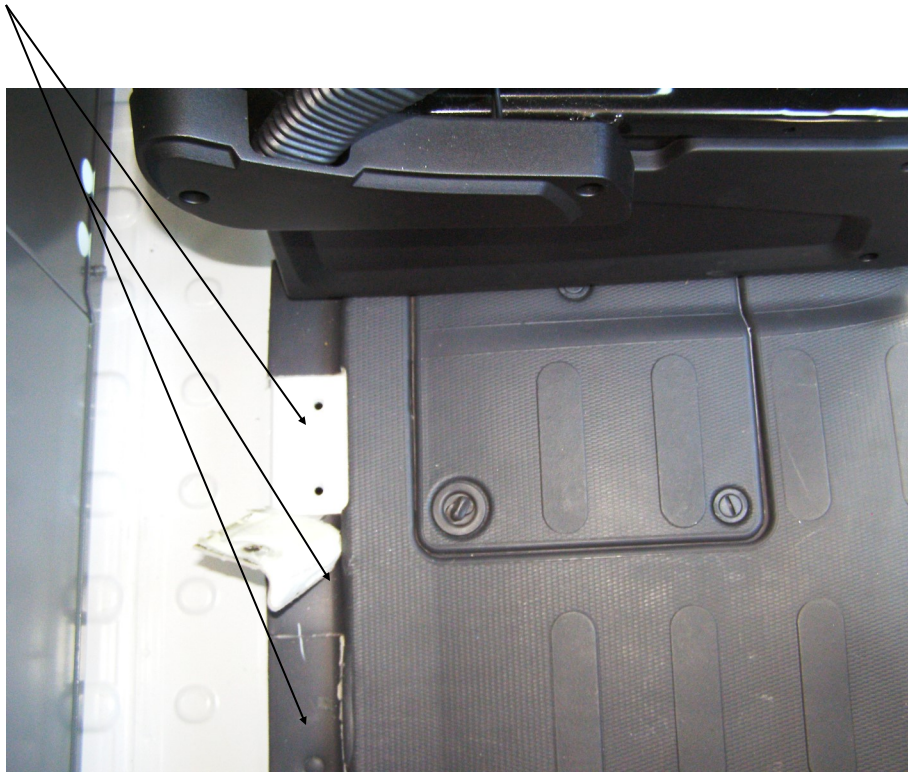
FAS0078 1/4-20X1.00" HEX HD SCREW
FAS0060 1/4 SPLIT LOCK WASHER
FAS0067 1/4 FLAT WASHER

**DO NOT FULLY TIGHTEN, WAIT UNTIL THE CCD IS ATTACHED TO THIS BRACKET
THEN FULLY TIGHTEN**

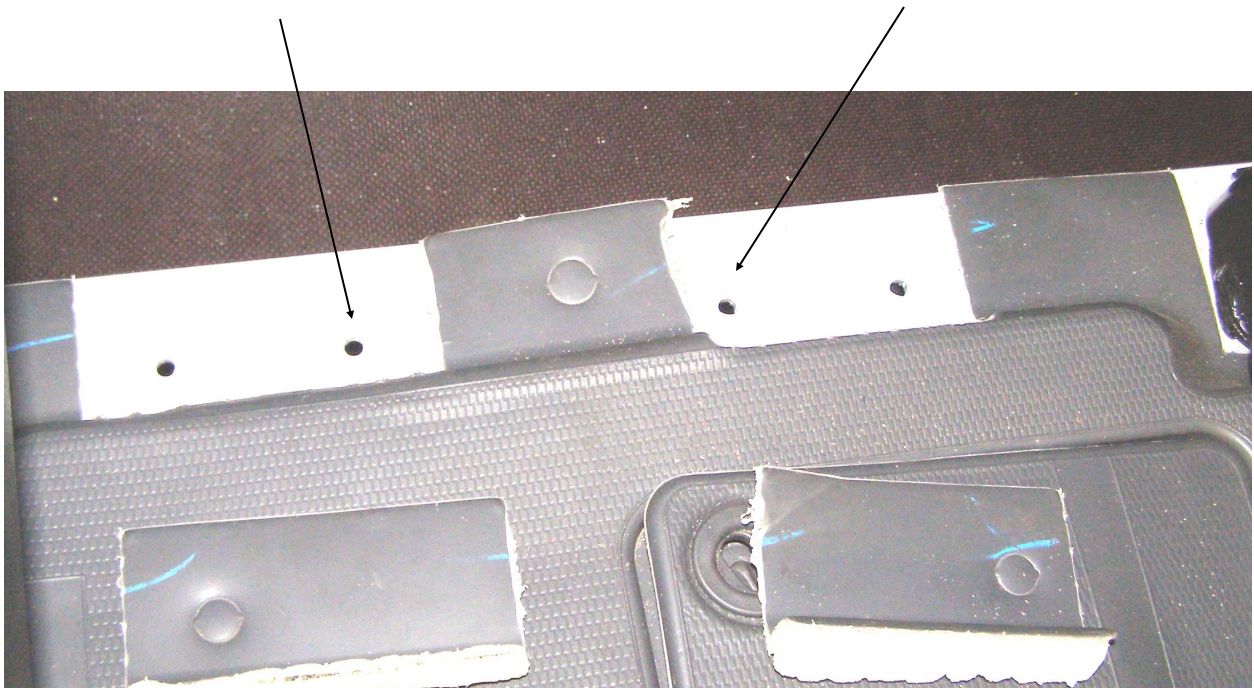


INSTALL REAR MNTG BRLK ASS'Y (45690-B)

REMOVE FLOOR TRIM OVER HOLES IN BETWEEN REAR OF SEATS

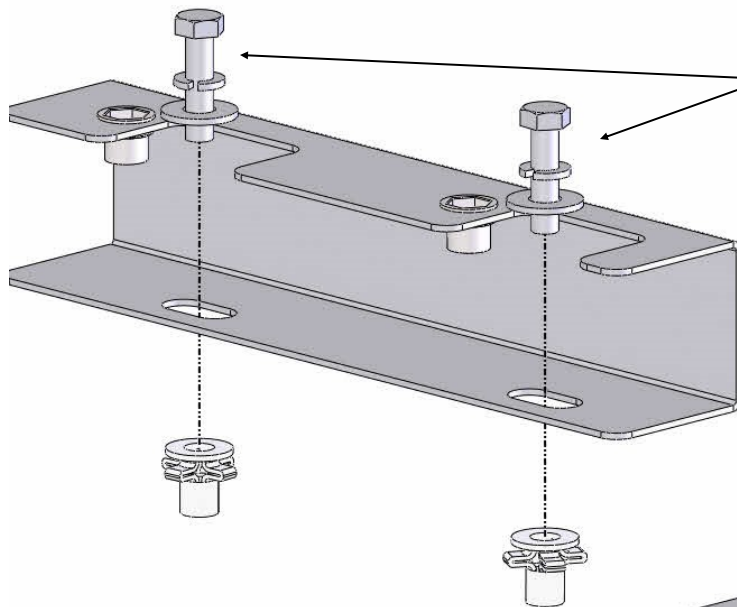
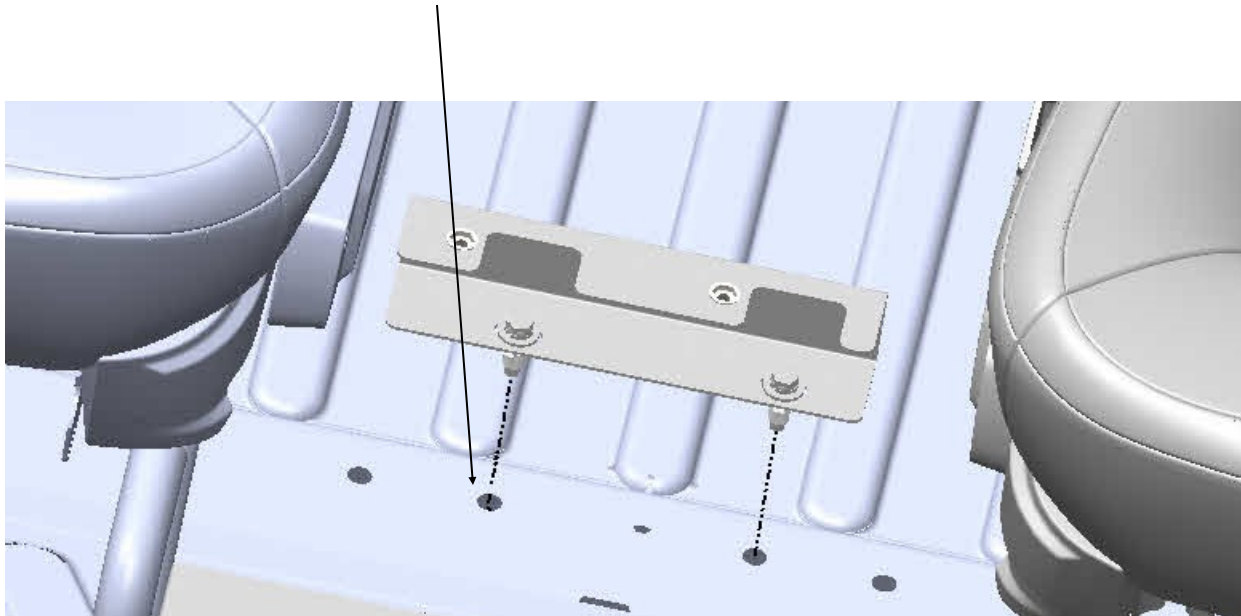


USE CENTER TWO HOLES FOR MOUNTING



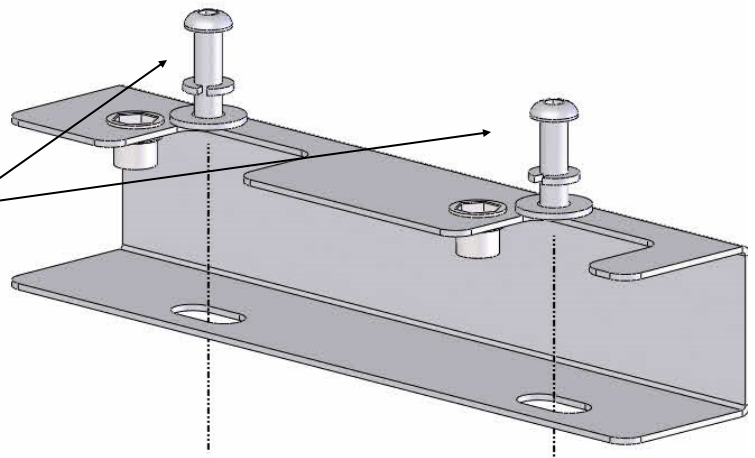
**INSTALL REAR MNTG BRLK ASS'Y (45690-B) CONTINUED**

THESE HOLES MAY HAVE A 8MM WELD NUT. IF IT DOES USE 8MM SCREW SUPPLIED.
IF THERE IS NOT A 8MM WELD NUT DRILL W/STOP FOR A 5/16 PLAINUT (FAS0091)
:SEE PAGE 3 FOR INSTRUCTIONS.

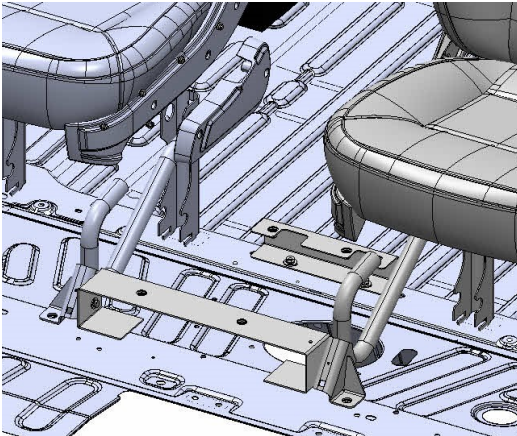


IF NO 8MM WELD NUTS ARE INSTALLED USE
(2) FAS0587 5/16 X 1.25 HH SCREWS
(2) FAS0098 5/16 SPLIT LOCK WASHERS
(2) FAS0112 5/16 FLAT WASHERS

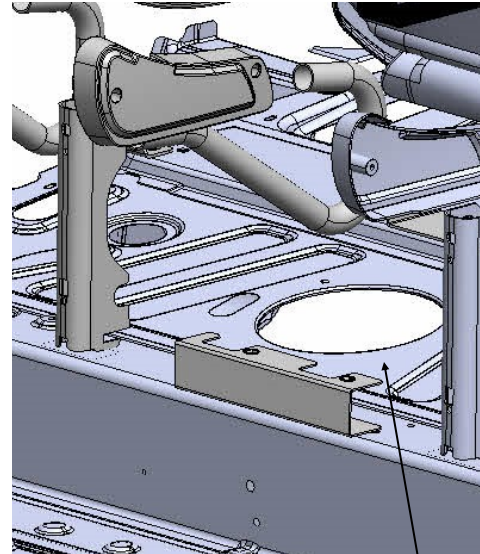
IF 8MM WELD NUTS ARE INSTALLED USE
(2) FAS0727 BUT HD 8MM SCREWS
(2) FAS0098 5/16 SPLIT LOCK WASHERS
(2) FAS0112 5/16 FLAT WASHERS



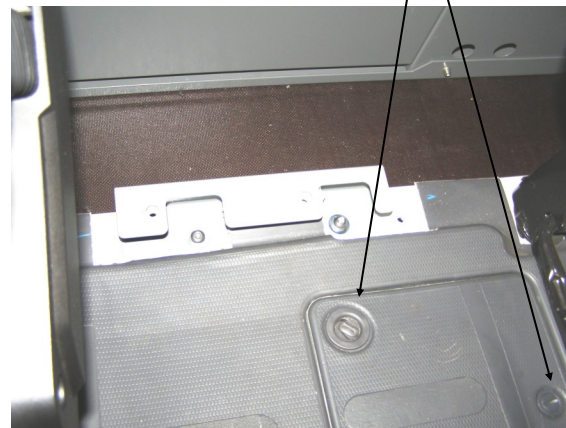
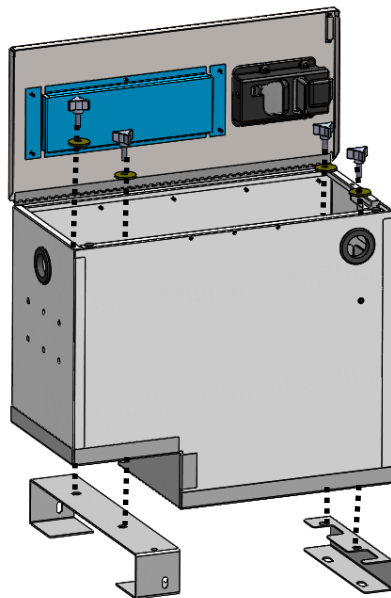
INSTALL TDC10 IN VEHICLE



SECURE TDC TO FLOOR MNTG BRKTS USING
(4) FAS0760 5/16 X 18 X 1 THUMB WHEELS
(4) 21166-0 ECCENTRIC WASHERS

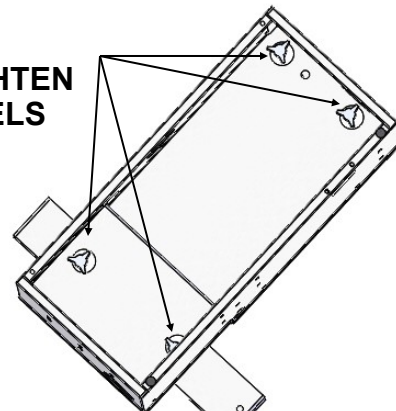


IF YOU NEED TO ACCESS THE COVER FOR THE FUEL SENDER, UNPLUG THE DESK, LOOSEN THUMBWHEELS AND LIFT TDC10 OUT. WHEN COMPLETE REINSTALL TDC.



MAKE SURE TO FULLY TIGHTEN
THE FAS0760 THUMB WHEELS

NOW FULLY TIGHTEN FASTENERS FOR THE
45693-B
FRONT MNTG BRKT.





INSTALL THE WIRE HARNESS—REMOVING TRIM



REMOVE FASTENERS
TO REMOVE HAND
BREAK COVER THE ON
LEFT SIDE OF THE
DRIVER'S SEAT.



REAR SIDE OF B PILLER
TRIM



FRONT SIDE OF B PILLER
TRIM

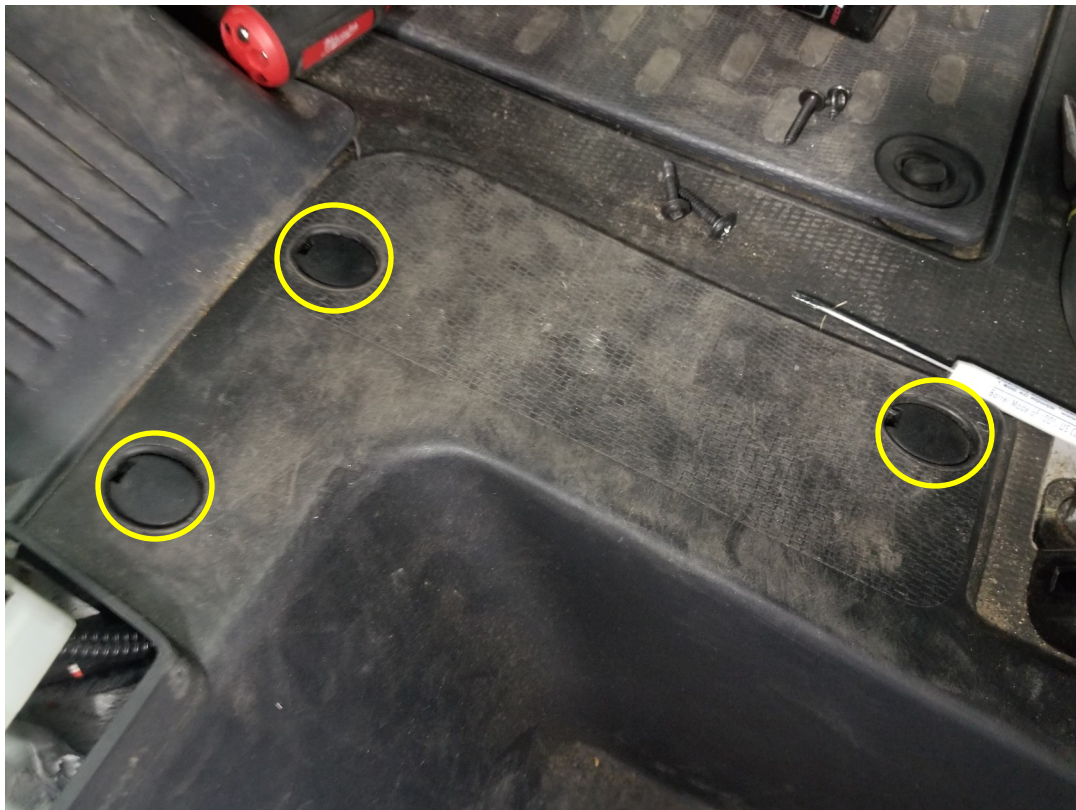
REMOVE FASTENERS TO REMOVE
THE B PILLER TRIM (DRIVER SIDE B
PILLER TRIM)



INSTALL THE WIRE HARNESS—REMOVING TRIM



REMOVE FASTENERS TO
REMOVE TRIM BY FOOT
WELL ON DRIVERS SIDE



IDENTIFY AND REMOVE FASTENER
PLUGS FROM DRIVER SIDE FOOT
WELL TRIM



INSTALL THE WIRE HARNESS—REMOVING TRIM



REMOVE FASTENERS TO REMOVE FOOT WELL TRIM ON DRIVER SIDE.



AFTER ALL THE FASTENERS ARE REMOVED THE FOOT WELL WILL BE EXPOSED.



INSTALL THE WIRE HARNESS—REMOVING TRIM



REMOVE FASTENERS TO REMOVE THE FUSE COVER TO THE BOTTOM LEFT OF THE STEERING WHEEL.

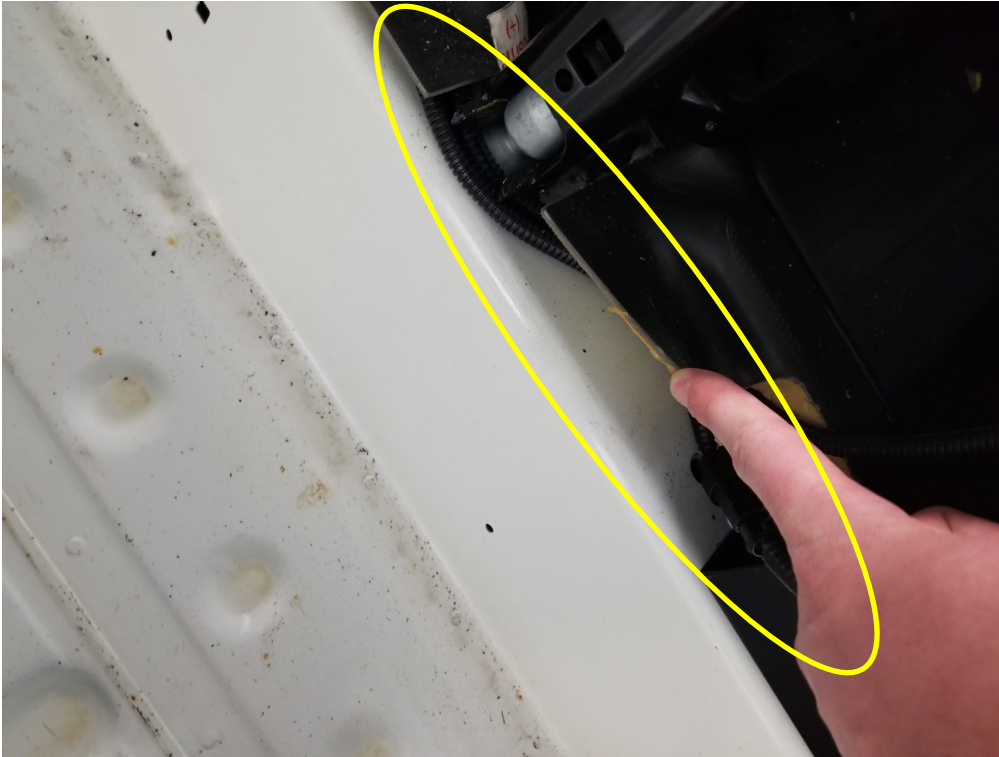
INSTALL THE WIRE HARNESS—ROUTING THE HARNESS



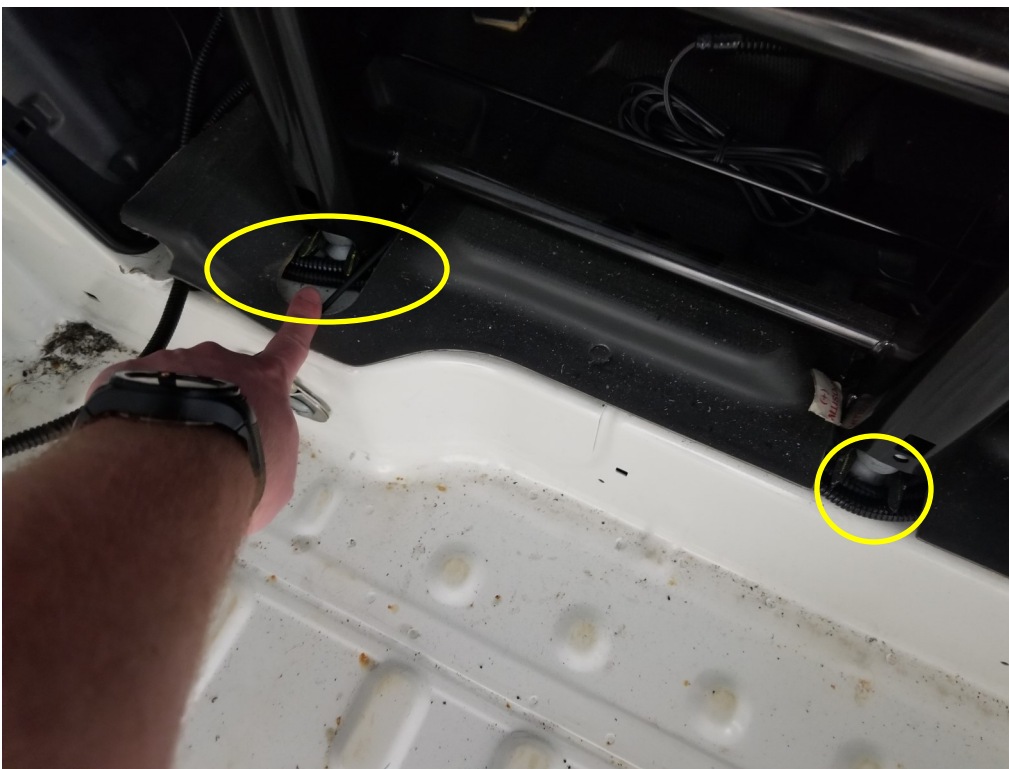
PLUG IN THE CONNCTORS THAT GO OUT THE BACK SIDE OF THE TDC10



INSTALL THE WIRE HARNESS—ROUTING THE HARNESS



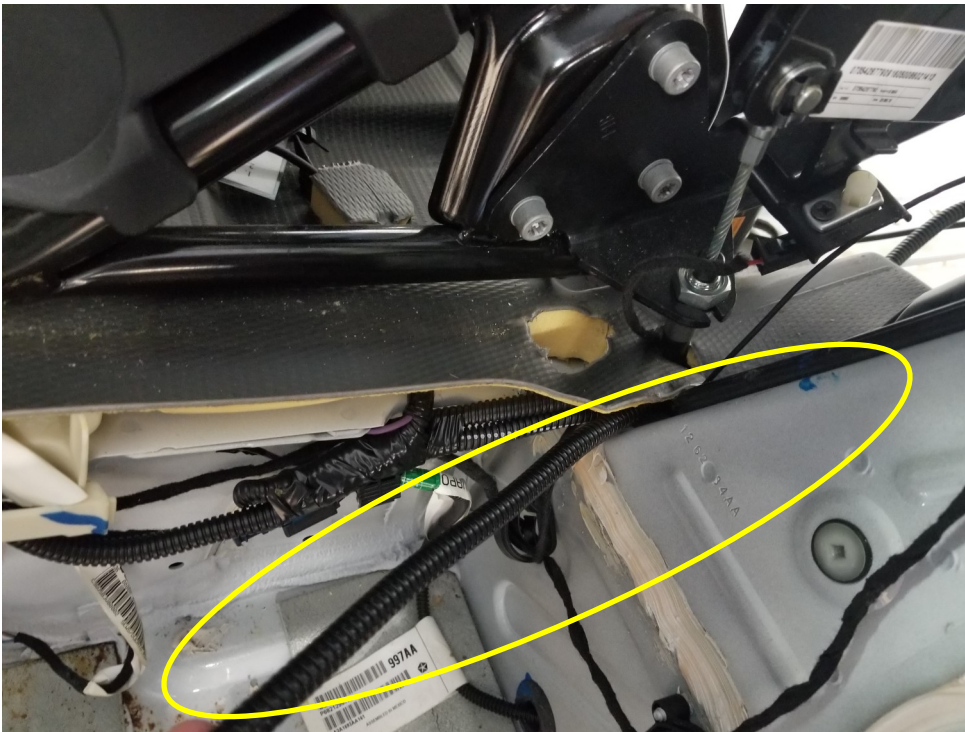
TUCK WIRE CON-
DUIT UNDER THE
FLOOR MATT ALONG
THE BACK OF THE
DRIVER SEAT. SE-
CURE WITH THE
PROVIDE WIRE TIES
WHERE NESSESARY.



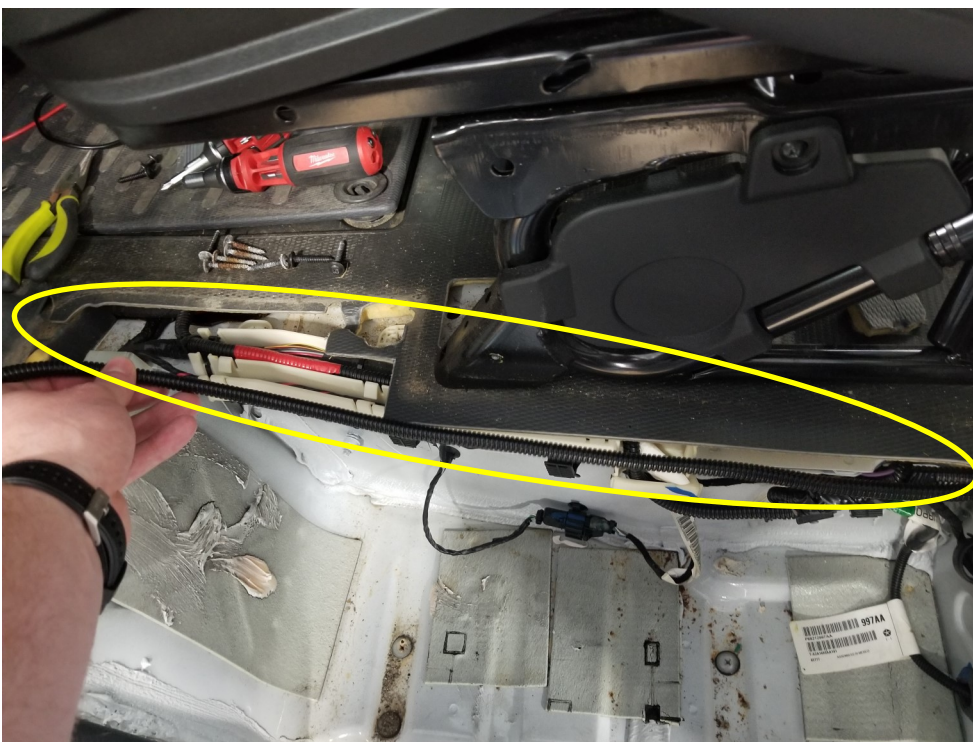
WIRE HARNESS
SHOWN TUCKED UN-
DER THE MATT
BEHIDE THE DRIVER
SEAT.



INSTALL THE WIRE HARNESS—ROUTING THE HARNESS



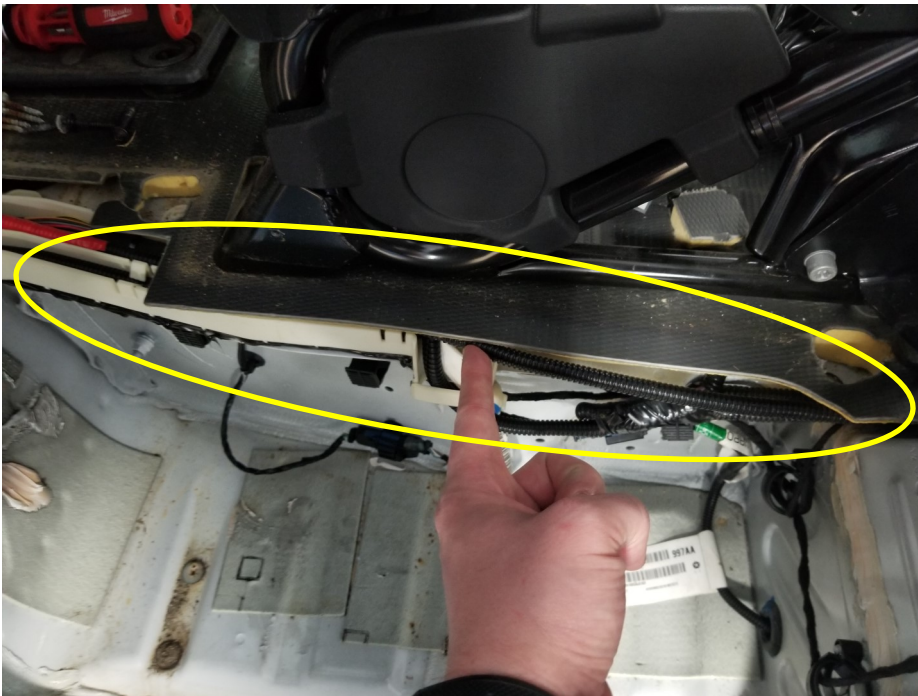
CONTINUE TO ROUTE THE WIRE UNDER THE FLOOR MATT AROUND THE SIDE OF THE DRIVER'S SEAT



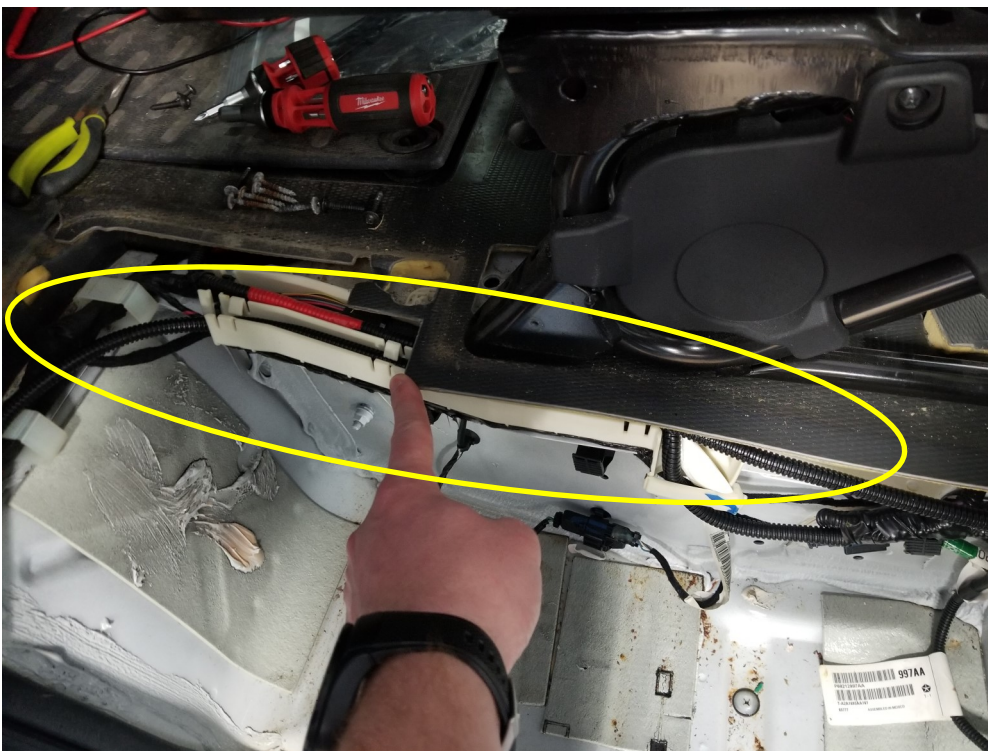
THE WIRE HARNESS WITH CONTINUE TO TRAVEL ALONG THE OEM CONDUIT AS SHOWN.



INSTALL THE WIRE HARNESS—ROUTING THE HARNESS



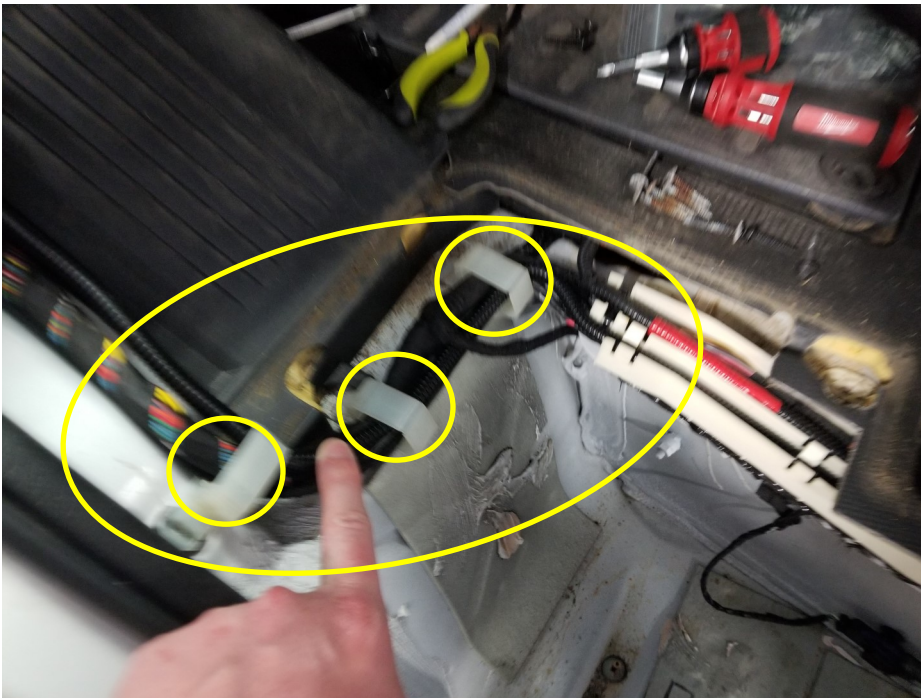
CONTINUE TO TUCK THE WIRE HARNESS INTO THE OEM CONDUIT THAT RUNS ALONG THE FOOT WELL.



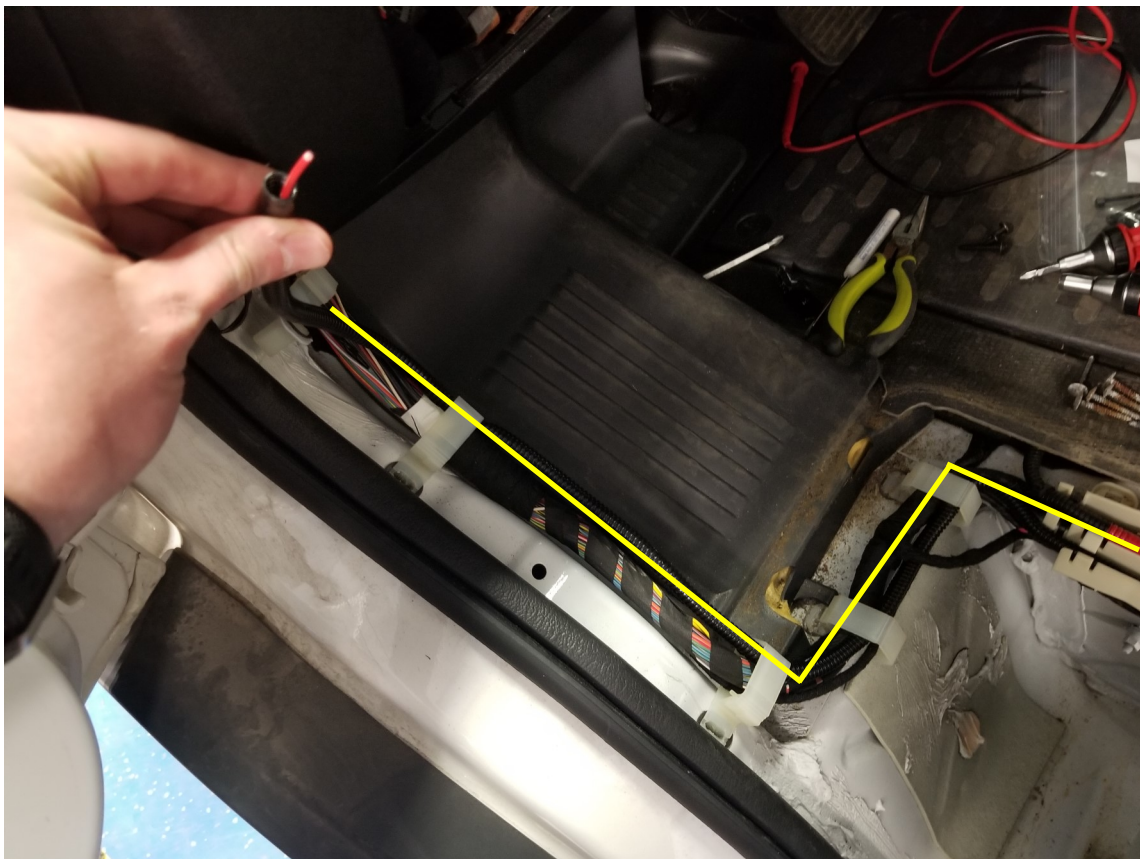
MAKE SURE THE WIRE HARNESS RUNS UNDER THE FLOOR MAT



INSTALL THE WIRE HARNESS—ROUTING THE HARNESS



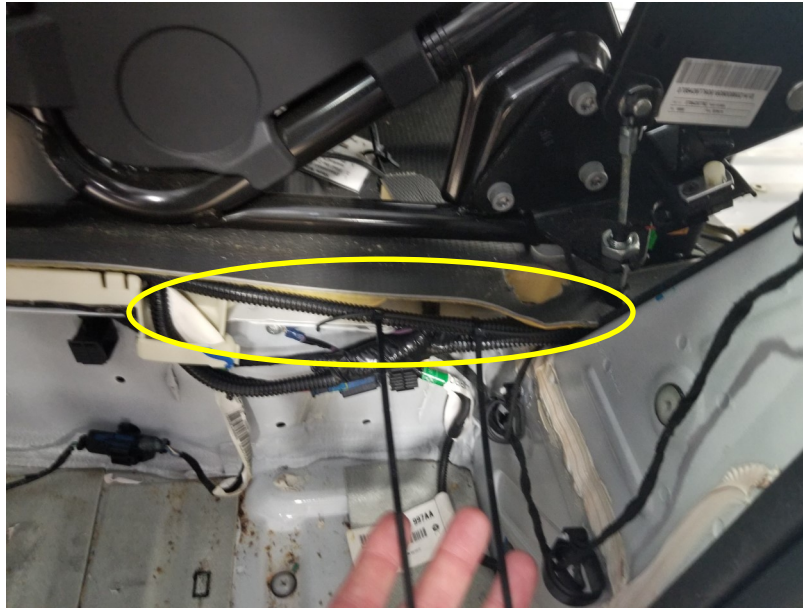
CONTINUE TO RUN THE WIRE HARNESS ALONG THE OEM ROUTING, USING A SMALL FLAT HEAD SCREWDRIVER TO OPEN THE SNAPS ON THE OEM CONDUIT.



THE WIRE ROUTING SHOULD LOOK LIKE AS SHOWN ABOVE, UTILIZING THE OEM ROUTING.



INSTALL THE WIRE HARNESS—ROUTING THE HARNESS



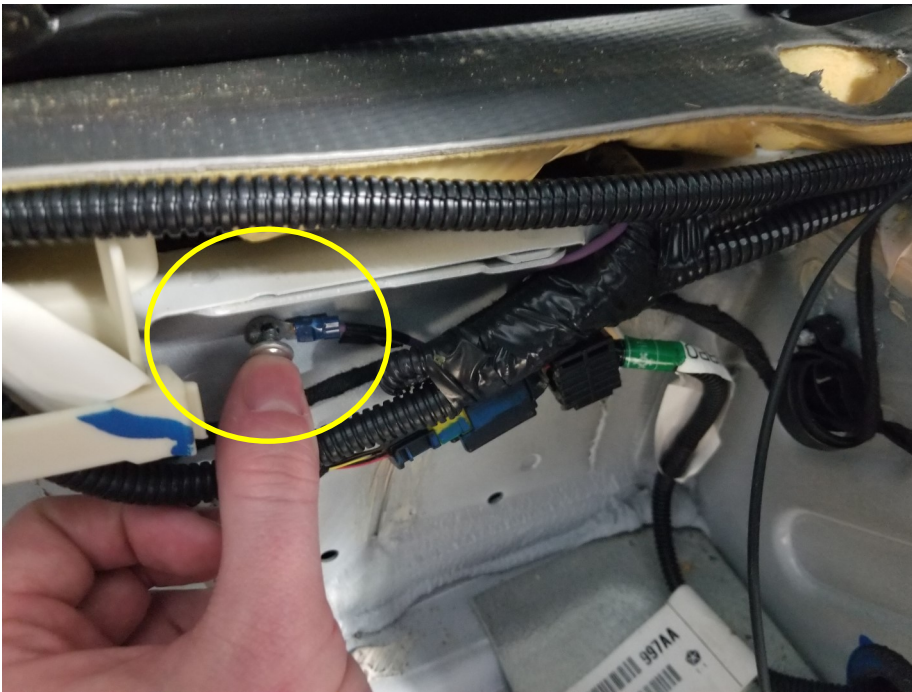
ONCE THE WIRE HARNESS IS ROUTED ADD ANY WIRE TIES AS NEEDED.



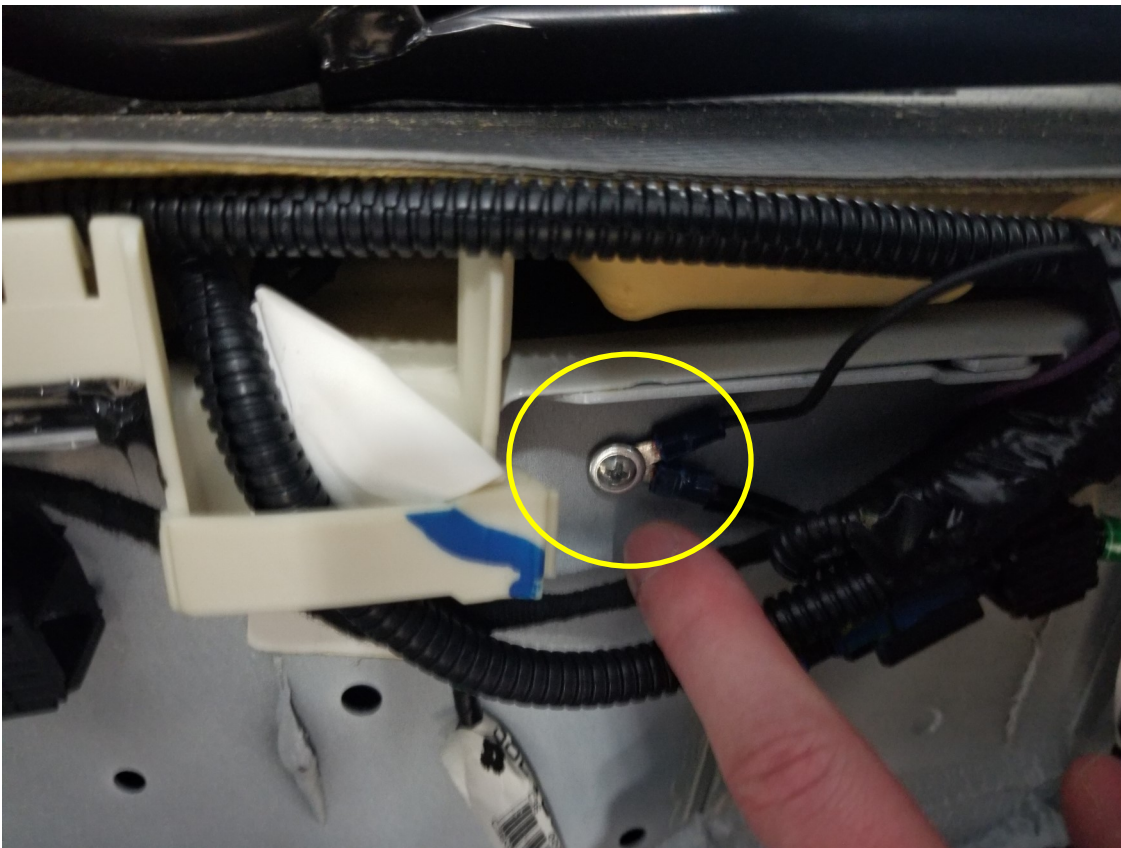
LOCATE OEM GROUNDING SCEW AND REMOVE TO ADD THE TDC10 WIRE HARNESS GROUND



INSTALL THE WIRE HARNESS—ROUTING THE HARNESS



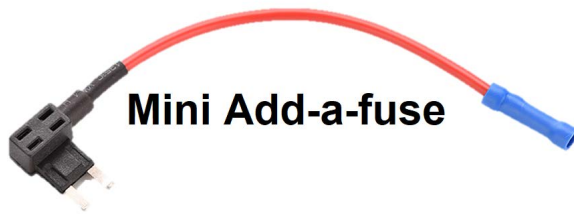
REMOVE THE
SCREW FROM THE
OEM GROUND WIRE



ADD TDC10 GROUND WIRE TO THE OEM GROUND WIRE AND FASTEN BACK DOWN UNTILL TIGHT.



INSTALL THE WIRE HARNESS—ROUTING THE HARNESS



Mini Add-a-fuse

Note: Kit may contain both a Micro and Mini Add-A-Fuse. Choose the size which fits the vehicle being up-fit. *The following pictures show the Mini version.*



Micro Add-a-fuse



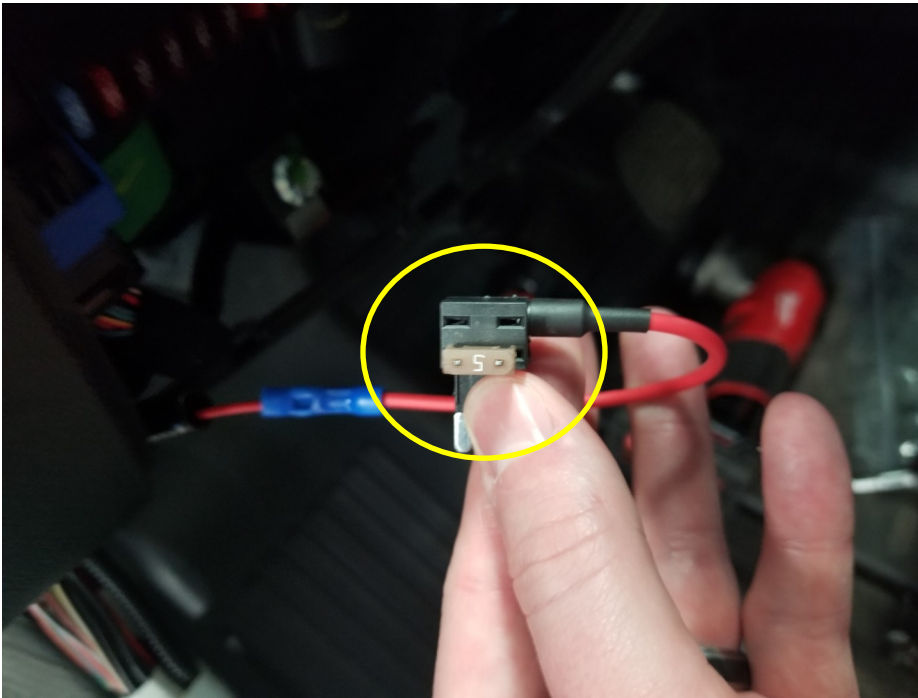
INSERT THE WIRE HARNESS THROUGH THE HOLE IN THE DASH THAT THE OEM WIRING FOLLOWS UP INTO THE FUSE PANNEL AREA. STRIP THE RED WIRE TO EXPOSE THE END AND CRIMP ON THE ADD-A-FUSE



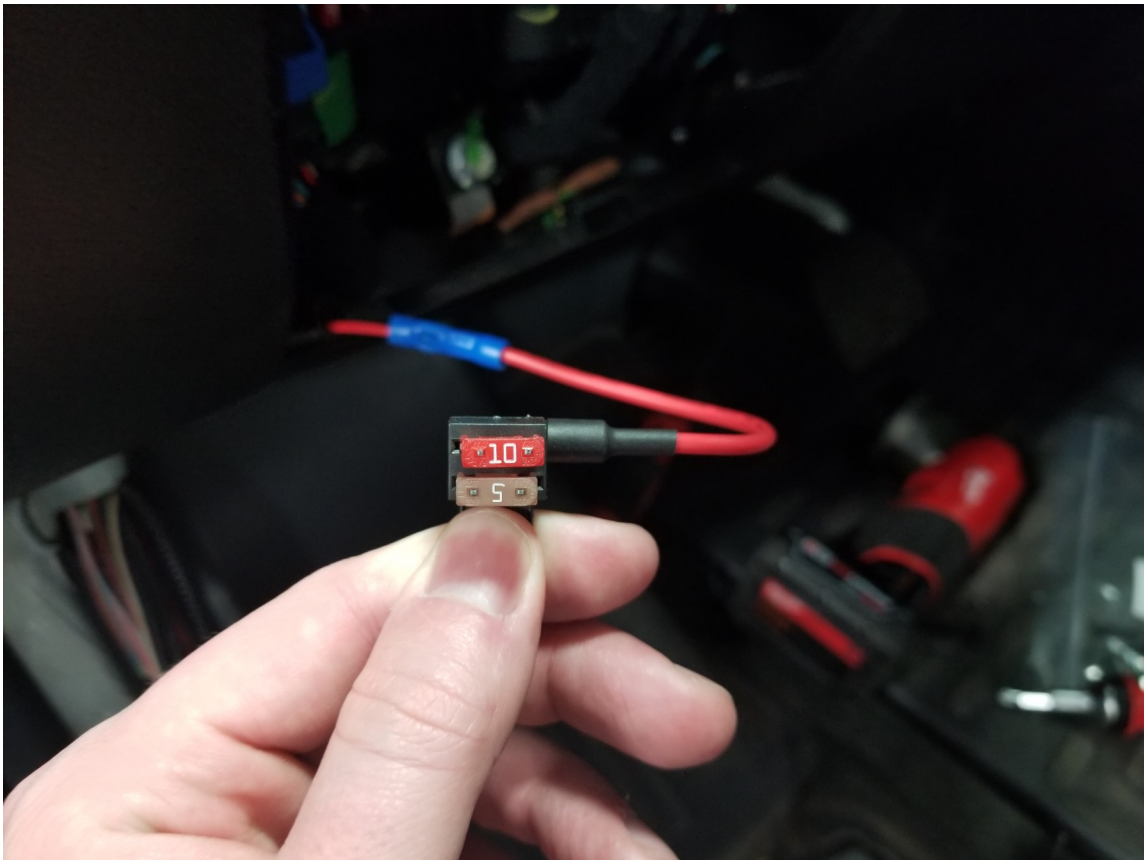
REMOVE THE 5amp FUSE FROM THE UPPER LEFT ROW OF THE FUSE PANNEL.



INSTALL THE WIRE HARNESS—ROUTING THE HARNESS



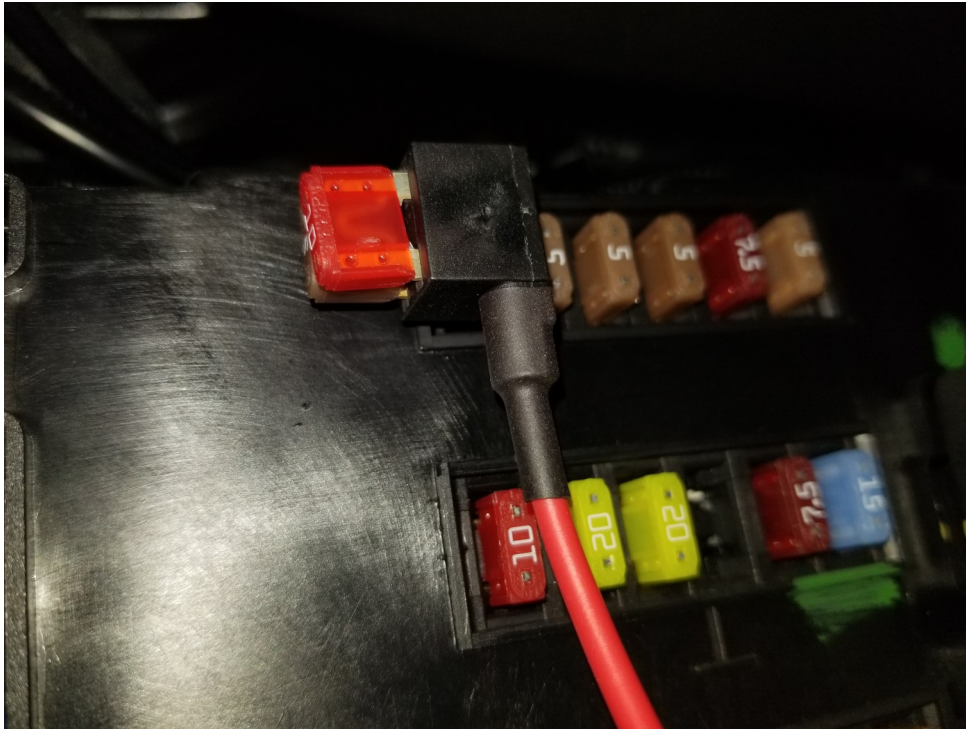
PLACE THAT OEM
FUSE INTO THE BOT-
TOM ADD-A-FUSE
SPOT AS SHOWN.



ADD THE 10amp FUSE PROVIDED IN THE TDC10 WIRE HARNESS INTO THE TOP SPOT OF THE ADD-A-FUSE AS SHOWN.



INSTALL THE WIRE HARNESS—ROUTING THE HARNESS



PLUG THE ADD-A-FUSE WITH THE CONNECT FUSES BACK IN THE FUSE SLOT IN THE UPPER LEFT SIDE OF THE FUSE PANNEL.

NOTE: THE WIRE HARNESS INSTALLATION IS COMPLETE, CONTINUE TO WIRE TIE ANY LOOSE WIRES TO FULLY SECURE THE HARNESS.



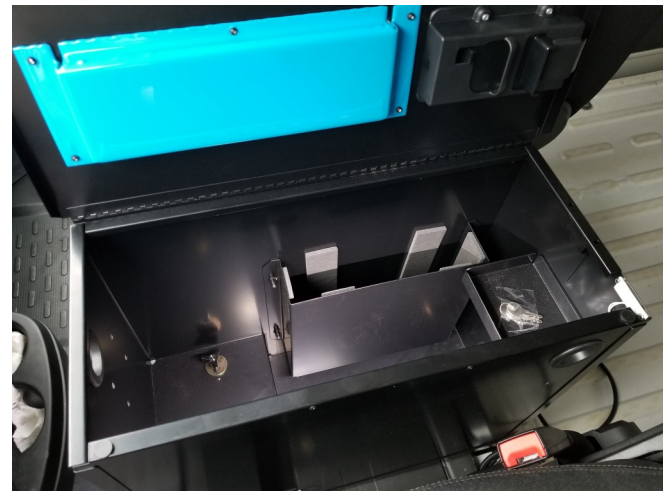
REASSEMBLE ALL THE TRIM COMPONENTS IN THE ORDER THAT THEY WERE TAKEN OFF IN.

NOTE: REASSEMBLE WITH CARE TO PREVENT BREAKING ANY COMPONENTS.

YOUR INSTALLATION IS NOW COMPLETE



NOTE: THE TDC10 WILL ONLY HAVE POWER WHEN THE VEHICLE IS ON TO PREVENT DEAD BATTERIES FROM OCCURRING.



**DOUBLE CHECK ALL FASTENER LOCATIONS TO BE SURE THAT ALL FASTENERS ARE TIGHTENED TO SPECIFICATIONS.
YOUR INSTALLATION IS NOW COMPLETE!
STOW THIS COPY IN THE VEHICLE FOR FUTURE REFERENCES!**