

FASTENER GROUPS LISTED BELOW ARE USED FOR ASSEMBLY AND INSTALLATION. SOME ASSEMBLY DRILLING IS REQUIRED. PARTITION INSTRUCTIONS & FASTENERS ARE WITH THAT UNIT. USE KD UNIT DRAWINGS TO IDENTIFY THEIR SEPARATE PARTS. CUSTOMER SPECIFIED SHELF DIMENSIONS ARE SHOWN HERE.

SYM	FASTENERS	QTY	DRILL
-----	-----------	-----	-------

ASSEMBLY FASTENERS			
●	{ 1/4-20 X 1/2" THP.SCW.	{ (4)	{ 9/32
●	{ 1/4-20 HX. FLANGE NUT	{ (4)	{ 9/32
●	{ 8-32 X 3/8 RHP.SCW	{ (2)	{ 3/16
●	{ 8-32 HX. FLANGE NUT	{ (2)	{ 3/16
●	{ 10-24 X 1/2 RHP.SCW	{ (11)	{ 3/16
●	{ 10-24 HX. FLANGE NUT	{ (11)	{ 3/16
INSTALLATION FASTENERS			
●	{ 1/4 PLN. WASHER	{ (4)	{ 9/32
●	{ 1/4-20 HX.STDP NUT	{ (2)	{ 9/32
●	{ 1/4-20 X 1-1/2 HHSCW/FT	{ (2)	{ 9/32
●	{ 1/2 PLN. WASHER	{ (2)	{ 9/32
●	{ 1/4-20 PLUSNUT "PB"	{ (2)	{ 13/32
●	{ 1/4-20 X 1-1/2" HHSCW/FT	{ (2)	{ 13/32
●	{ 1/4 PLN WASH	{ (2)	{ 13/32
●	{ 1/4 SPLIT RING L" WASHER	{ (2)	{ 13/32

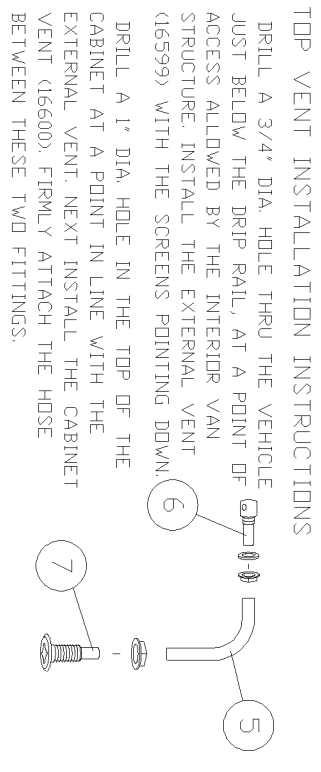


ADRIAN STEEL CO.  
906 JAMES STREET  
ADRIAN, MI 49221  
517/265-6194

TA20 MAPP GAS  
CABINET ASSEMBLY  
8 X 26 X 14

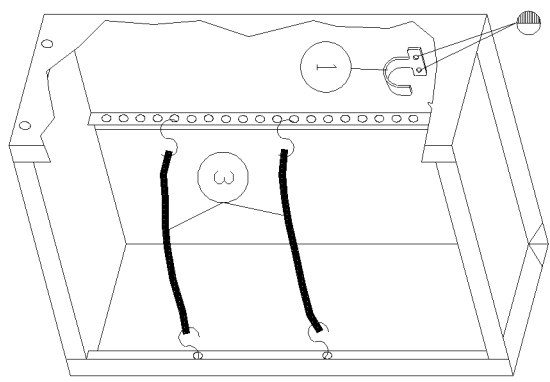
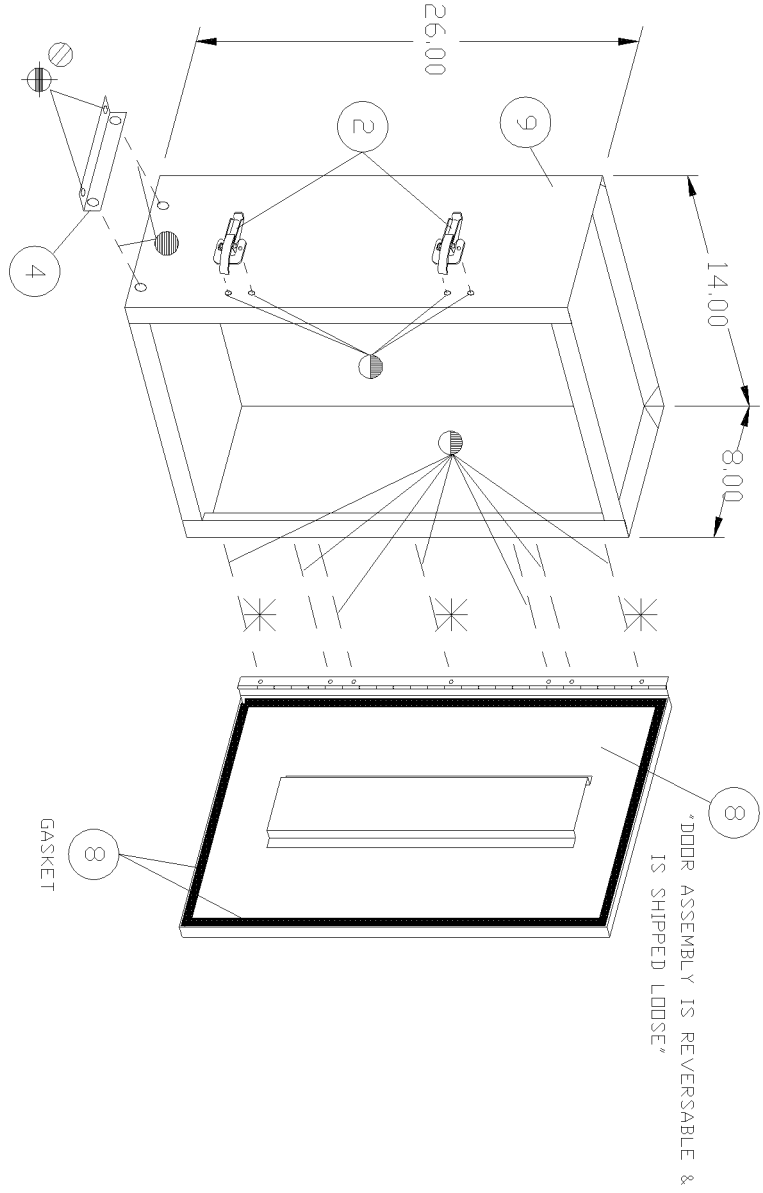
DWG BY	ECN#	DATE	CHK BY	PACKAGE#	ISS.
BDH	12861	6/17/10		S/L TA20	G
PACKAGE WEIGHT -		28.06 #	REFERENCE - REF 16689		
ITEM	PART NO.	DESCRIPTION			QTY.

1	UH10	UTILITY HOOK, 1"	1
2	4165	CLAMP ASSEMBLY	2
3	CS9	9" CARGO STRAP W/HOOKS	2
4	11071	FLOOR MOUNTING ANGLE	2
5	16598	HOSE 5/8" I.D.	3'
6	16599	FITTING, VENT-THRU VEHICLE	1
7	16600	FITTING, VENT-THRU CABINET	1
8	16688	DOOR ASSEMBLY	1
9	16690	WELDED MAPP GAS CABINET ASSY.	1
10	09950-0	NEOPRENE GASKET /FT	6.55'



FOR SPRINTER:  
INSTALL EXTERIOR VENT APPROXIMATELY  
4" BELOW EXTERIOR DRIP RAIL.

NOTE: ONCE DETERMINED WHICH SIDE OF THE CABINET ASSEMBLY THE  
DOOR ASSEMBLY IS TO BE MOUNTED, THE CABINET BODY MUST  
BE DRILLED FOR THESE 3 LOCATIONS AT TIME OF INSTALLATION.



CAUTION:  
DRILL THRU FLOOR WITH CARE  
WATCH FOR GAS TANK, CONTROL  
LINES, & ELECTRICAL WIRING.

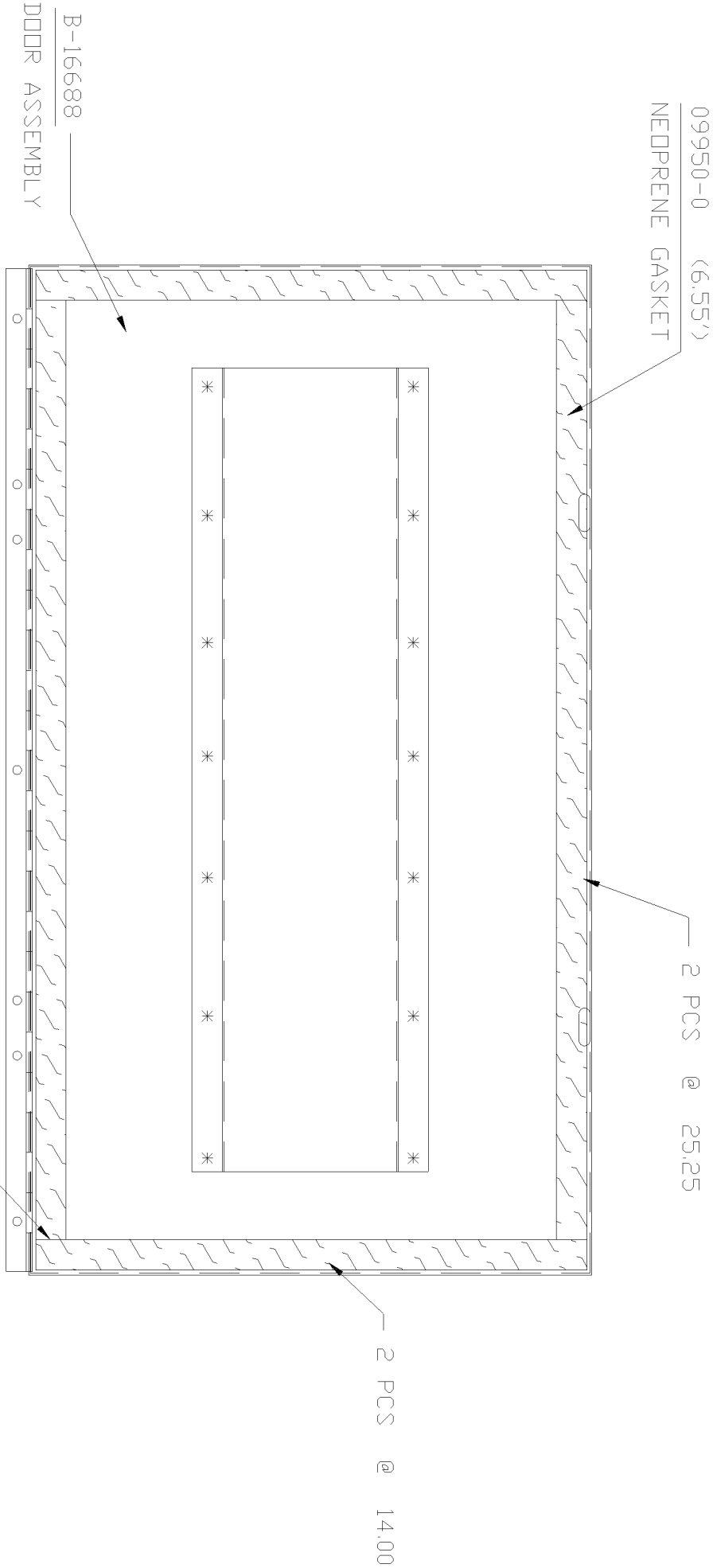
FASTENING PROCEDURES  
1. USE NUT & BOLT THRU WHEREVER POSSIBLE.  
2. USE PLUSNUTS FOR BLIND FASTENING.  
3. AS A LAST RESORT USE SHEET METAL SCREWS.



ADRIAN STEEL CO.  
906 JAMES STREET  
ADRIAN, MI 49221  
517/265-6194

# GASKET APPLICATION INSTRUCTIONS

DWG BY	ECN#	DATE	CHK BY	PACKAGE#	ISS.
BDH	12861	6/17/10		S/L TA20	G



APPLY NEOPRENE GASKET ALL THE WAY AROUND  
OUTER EDGES WITH NO GAPS AT SEAMS !

FASTENER GROUPS LISTED BELOW ARE USED FOR ASSEMBLY AND INSTALLATION. **SOME ASSEMBLY DRILLING IS REQUIRED.** PARTITION INSTRUCTIONS & FASTENERS ARE WITH THAT UNIT. USE KD UNIT DRAWINGS TO IDENTIFY THEIR SEPARATE PARTS. CUSTOMER SPECIFIED SHELF DIMENSIONS ARE SHOWN HERE.

SYM.	FASTENERS	QTY	DRILL
------	-----------	-----	-------

<u>ASSEMBLY FASTENERS</u>			
●	{ 1/4-20 X 1 1/2" THP.SCW.	(4)	9/32
	{ 1/4-20 HX. FLANGE NUT	(4)	
●	{ 8-32 X 3/8 RHP.SCW	(2)	3/16
	{ 8-32 HX. FLANGE NUT	(2)	
●	{ 10-24 X 1/2 RHP.SCW	(11)	3/16
	{ 10-24 HX. FLANGE NUT	(11)	
<u>INSTALLATION FASTENERS</u>			
⊗	{ 1/4 PLN. WASHER	(4)	9/32
	{ 1/4-20 HX.STOP NUT	(2)	
	{ 1/4-20 X 1-1/2 HH.SCW.FT	(2)	
	{ 1/2 PLN. WASHER	(2)	
⊗	{ 1/4-20 PLUSNUT "PB"	(2)	13/32
	{ 1/4-20 x 1-1/2" HH.SCW.FT	(2)	
	{ 1/4 PLN WASH	(2)	
	{ 1/4 SPLIT RING L'WASHER	(2)	



**ADRIAN STEEL CO.**  
906 JAMES STREET  
ADRIAN, MI 49221  
517/265-6194

## MAPP GAS CABINET ASSEMBLY

8 X 26 X 14

### TOP VENT INSTALLATION INSTRUCTIONS

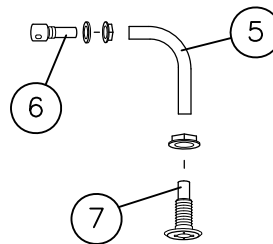
DRILL A 3/4" DIA. HOLE THRU THE VEHICLE JUST BELOW THE DRIP RAIL, AT A POINT OF ACCESS ALLOWED BY THE INTERIOR VAN STRUCTURE. INSTALL THE EXTERNAL VENT (16599) WITH THE SCREENS POINTING DOWN.

DRILL A 1" DIA. HOLE IN THE TOP OF THE CABINET AT A POINT IN LINE WITH THE EXTERNAL VENT. NEXT INSTALL THE CABINET VENT (16600). FIRMLY ATTACH THE HOSE BETWEEN THESE TWO FITTINGS.

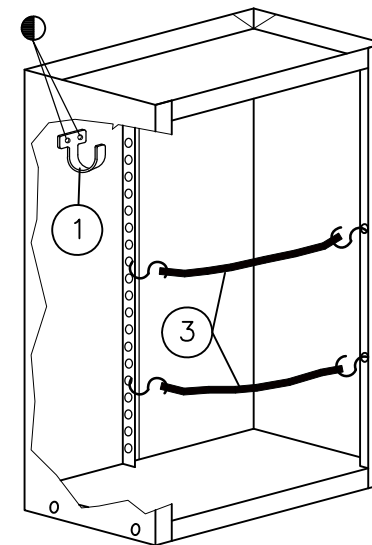
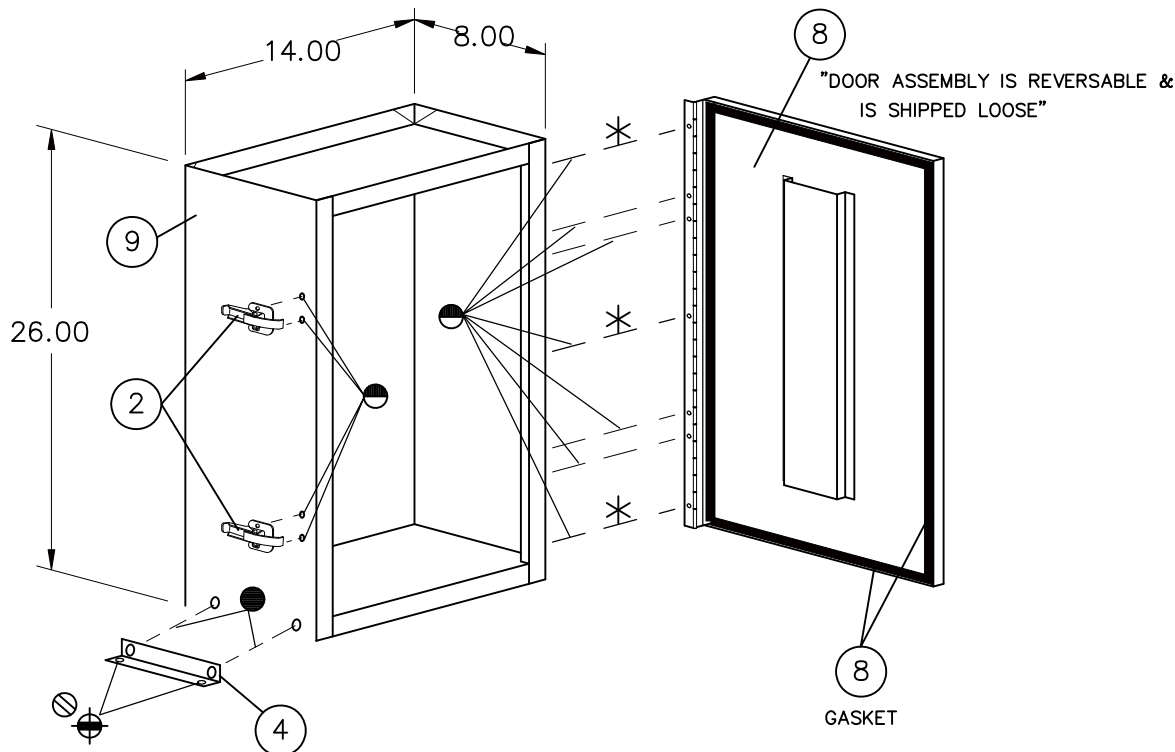
### FOR SPRINTER:

INSTALL EXTERIOR VENT APPROXIMATELY 4" BELOW EXTERIOR DRIP RAIL.

**NOTE:** ONCE DETERMINED WHICH SIDE OF THE CABINET ASSEMBLY THE DOOR ASSEMBLY IS TO BE MOUNTED; THE CABINET BODY MUST BE DRILLED FOR THESE 3 LOCATIONS AT TIME OF INSTALLATION. \*



DWG BY		ECN#	DATE	CHK.BY	PACKAGE#		ISS.
BDH	18513	04/26/2016		S/L	44259	B	
PACKAGE WEIGHT— 28.06 #							
ITEM	PART NO.	DESCRIPTION					QTY.
1	UH10	UTILITY HOOK, 1"					1
2	4165	CLAMP ASSEMBLY					2
3	CS9	9" CARGO STRAP W/HOOKS					2
4	11071	FLOOR MOUNTING ANGLE					2
5	15682-0	HOSE,5/8 I.D. HEATER /FT					3'
6	16599	FITTING, VENT-THRU VEHICLE					1
7	16600	FITTING, VENT-THRU CABINET					1
8	16688	DOOR ASSEMBLY					1
9	16690	WELDED MAPP GAS CABINET ASSY.					1
10	09950-0	NEOPRENE GASKET /FT					6.55'



PAGE 1 of 2

### FASTENING PROCEDURES

1. USE NUT & BOLT THRU WHEREVER POSSIBLE.
2. USE PLUSNUTS FOR BLIND FASTENING.
3. AS A LAST RESORT USE SHEET METAL SCREWS.

**CAUTION:**  
DRILL THRU FLOOR WITH CARE  
WATCH FOR GAS TANK, CONTROL  
LINES, & ELECTRICAL WIRING.



ADRIAN STEEL CO.  
906 JAMES STREET  
ADRIAN, MI 49221  
517/265-6194

# GASKET APPLICATION INSTRUCTIONS

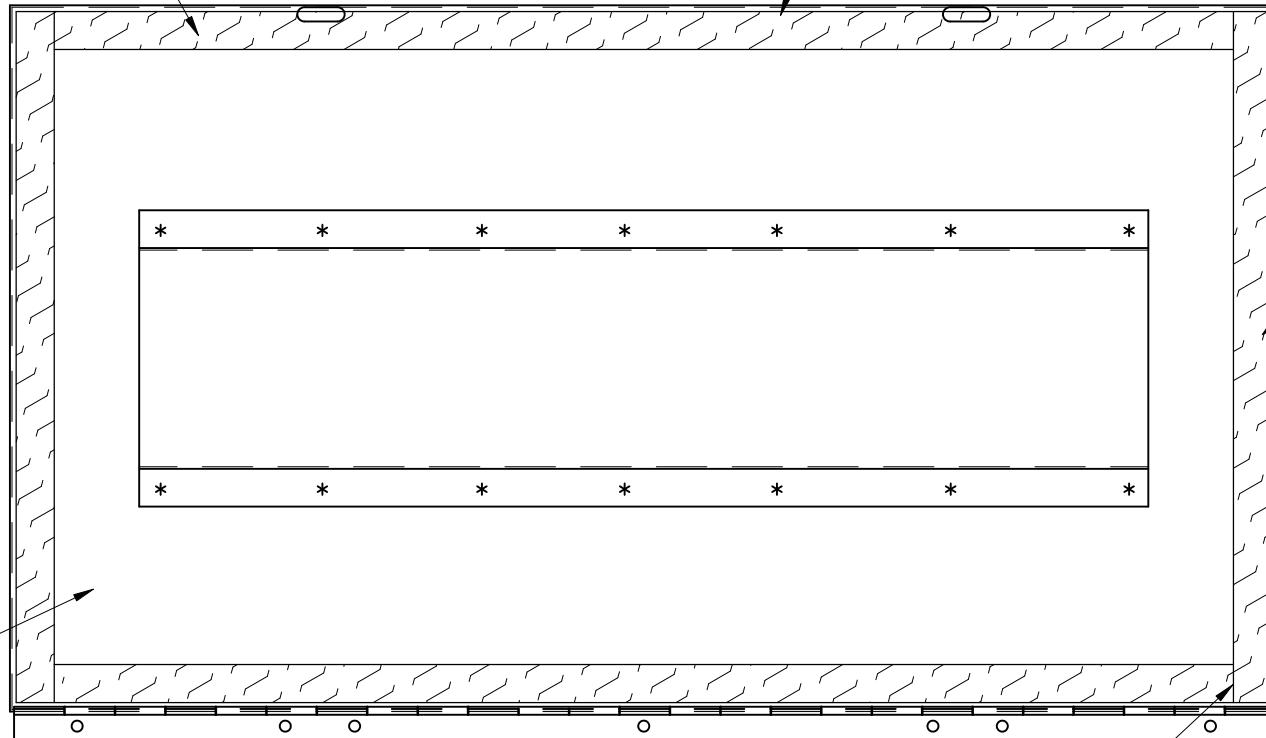
DWG BY	ECN#	DATE	CHK.BY	PACKAGE#	ISS.
BDH	18513	04/26/2016		S/L 44259	B

09950-0 (6.55')  
NEOPRENE GASKET

2 PCS @ 25.25

2 PCS @ 14.00

B-16688  
DOOR ASSEMBLY



APPLY NEOPRENE GASKET ALL THE WAY AROUND  
OUTER EDGES WITH NO GAPS AT SEAMS !