



ADRIAN STEEL®

Cargo Management Solutions for Commercial Vehicles

SIDE STEP, FORD TRANSIT 130

PRODUCT WEIGHT

30 lbs.

WIDTH X DEPTH X HEIGHT

54.25" X 28.13" X 11.88"

CAPACITY

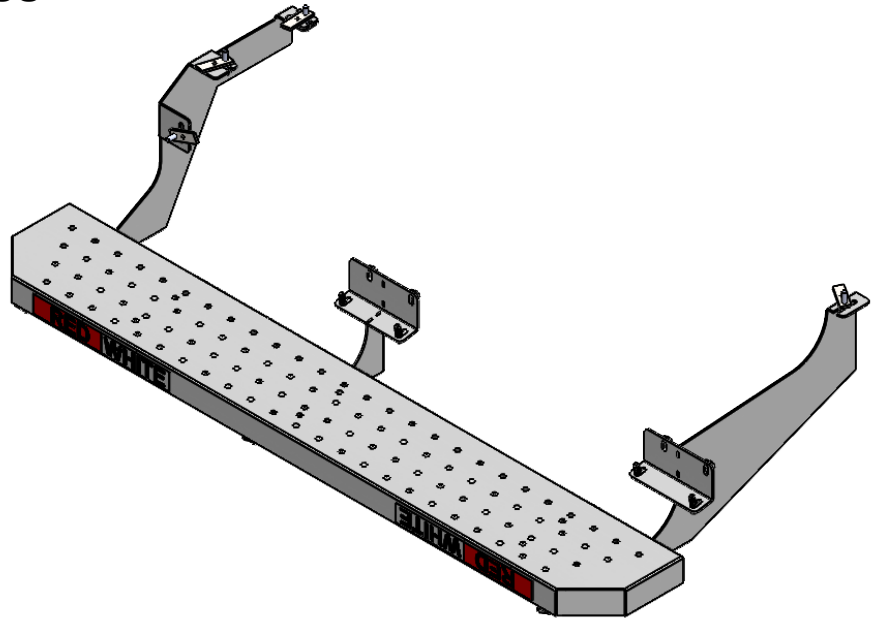
250 lbs.

COLOR

BLACK

CATALOG NUMBER

STEPFT130



PRODUCT FEATURES

This side/rear step, designed for seamless integration with your vehicle using factory mounting locations—no drilling required. Engineered with dimpled surfaces, these steps provide exceptional traction even in slippery conditions, ensuring safety and stability. The addition of conspicuity tape enhances visibility, making the step easily noticeable and safe for use. This step not only offers a lower surface for effortless access into and out of your van but also combines functionality with a sleek design, elevating both convenience and style.

This step is only compatible with the Ford Transit 130" WB ICE vans.

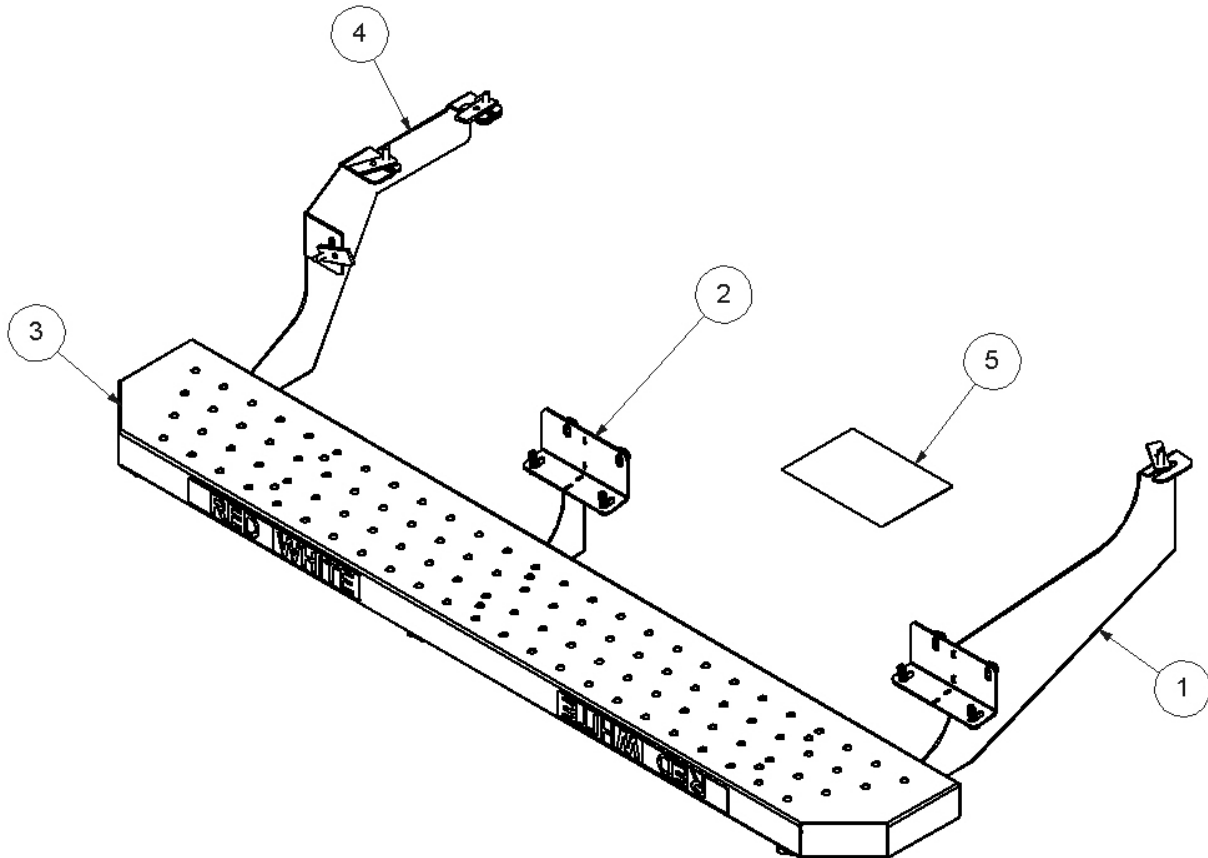


ADRIAN STEEL®

Cargo Management Solutions for Commercial Vehicles

Assembly/Installation Instructions and Owners Manual

ITEM NO.	PART NUMBER	DESCRIPTION	QTY.
1	62617-B	FT SIDE STEP FRONT BRACKET ASSY	1
2	62618-B	FT SIDE STEP MID BRACKET ASSY	1
3	62959-B	STEP WLDMNT, SIDE DOOR	1
4	64124-B	FT130 SIDE STEP BRKT WLDMNT	1
5	BAG 64121	BAG FOR STEPFT130	1



STEPFT130 SIDE STEP, 130 WB FORD TRANSIT

- PRECAUTIONS -





 **CAUTION** 
**THE USE AIR IMPACT TOOLS CAN
OVER-TORQUE FASTENERS AND
CAUSE FASTENER FAILURE!**



 **CAUTION** 
**ALL INSTALLATION HOLES SHOULD BE SEALED
WITH SILICON OR BUTYL SEALANT TO PREVENT
EXHAUST FUMES FROM ENTERING THE VEHICLE!**



 **DANGER** 
**INSPECT FOR FUEL TANK, FUEL LINES, BRAKE LINES, HIGH
VOLTAGE BATTERIES AND ELECTRICAL LINES PRIOR TO
DRILLING TO AVOID DAMAGING CRITICAL VEHICLE SYSTEMS
OR INJURY TO INSTALLER DURING INSTALLATION PROCESS!**



 **CAUTION** 
**TO AVOID DAMAGING THE VEHICLE ALWAYS
USE DRILL STOPS WHEN DRILLING ANY IN-
STALLATION HOLES!**



- IMPORTANT WARRANTY REQUIREMENTS -

1. SUBSTITUTING ADRIAN STEEL SPECIFIED FASTENERS FOR ASSEMBLY AND/OR INSTALLATION WILL VOID YOUR PRODUCT WARRANTY.
2. ALL HOLES DRILLED INTO VEHICLE SHOULD HAVE THE RAW METAL EDGES SEALED WITH A SELF-ETCHING PRIMER TO RESIST CORROSION AND POTENTIAL FASTENER POINT FAILURE.
3. ALL FASTENERS USED IN THE INSTALLATION OF THIS PRODUCT SHOULD BE TIGHTENED TO THE TORQUE(S) SPECIFIED IN THESE INSTRUCTIONS.
4. THESE INSTRUCTIONS SHOULD BE KEPT WITH THE VEHICLE.

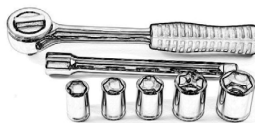
THE BASIC TOOLS NEEDED FOR MOST INSTALLATIONS



DRILL



DRILL BIT WITH
STOP



RATCHET, SOCKETS
AND/OR WRENCHES



SCREWDRIVERS

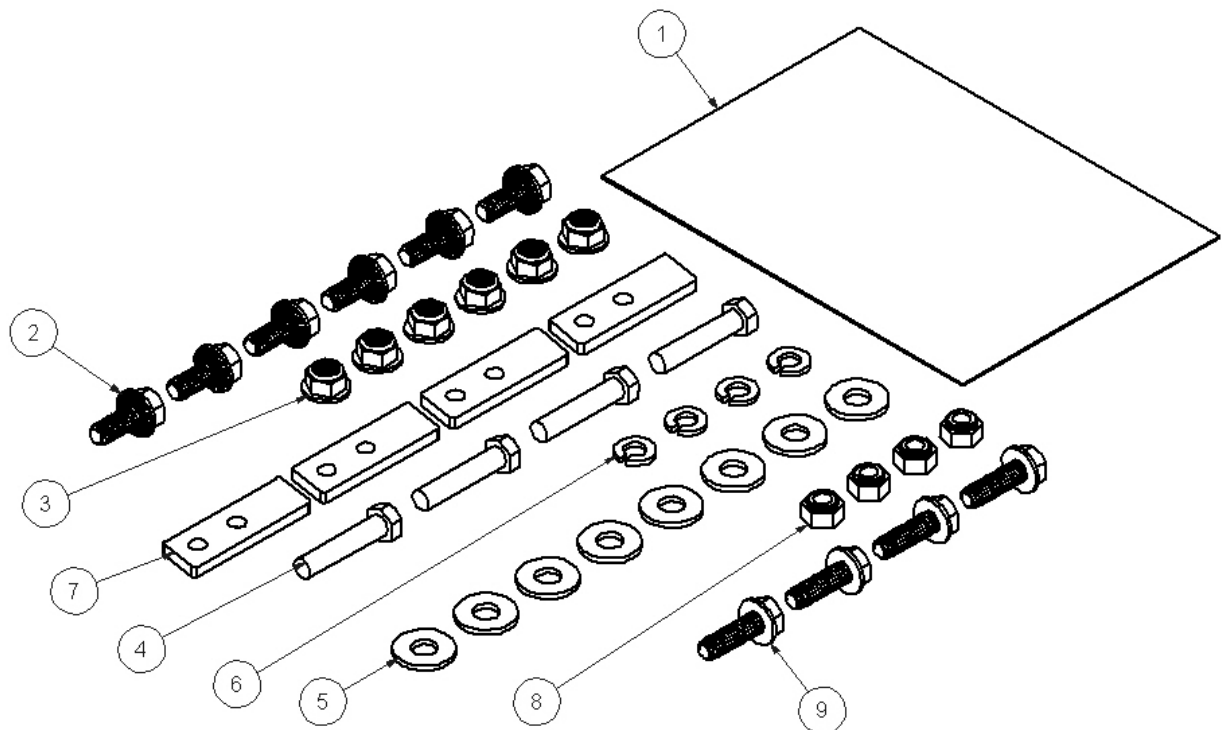


MEASURING TAPE

ADDITIONAL TOOLS MAY BE NEEDED FOR THIS INSTALLATION AND THEY WILL BE IDENTIFIED IN THE STEPS THAT FOLLOW.

**Installation and/or Assembly Fasteners
BAG64121**

ITEM NO.	PART NUMBER	DESCRIPTION	QTY.
1	BAG0507-A	5" x 7" 3MIL AUTOBAG	1
2	FAS0438	SCREW, HFLNG 5/16-18X.75 ZP	6
3	FAS0440	NUT, HEX NLK FLG 5/16-18 - ZP	6
4	FAS0092	Screw, Hex Hd, 5/16-18x1.50 Zn Plate, G8	4
5	FAS0086	WASHER, FLAT USS 5/16 ZP	8
6	FAS0098	Washer, Lock, Split, 5/16, Zinc Plate	4
7	62652	RETAINER BAR, 5/16-18 X 2-3/8	4
8	FAS0317	NUT, HEX NLK M8-1.25 SS	4
9	FAS0449	SCREW, HFLG 5/16-8X18TC ZP	4

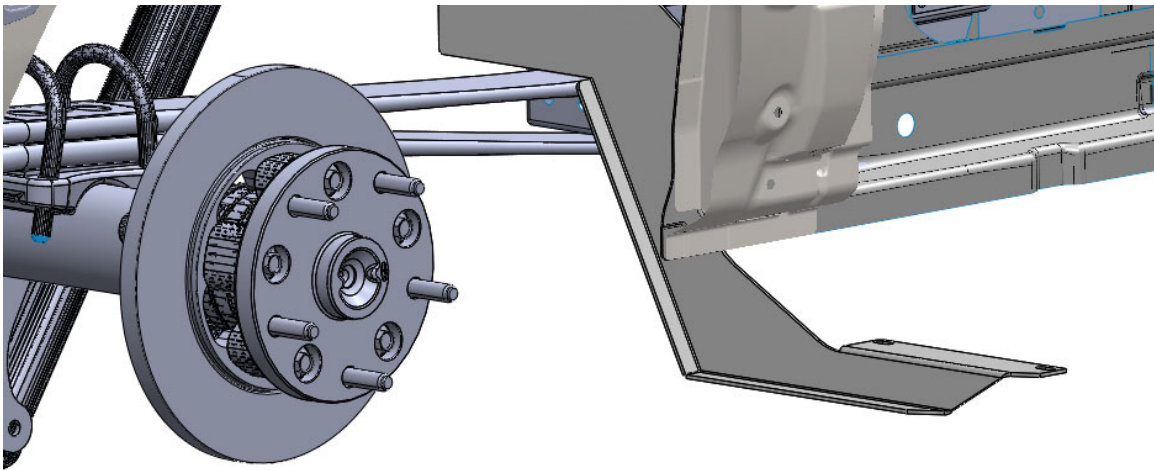
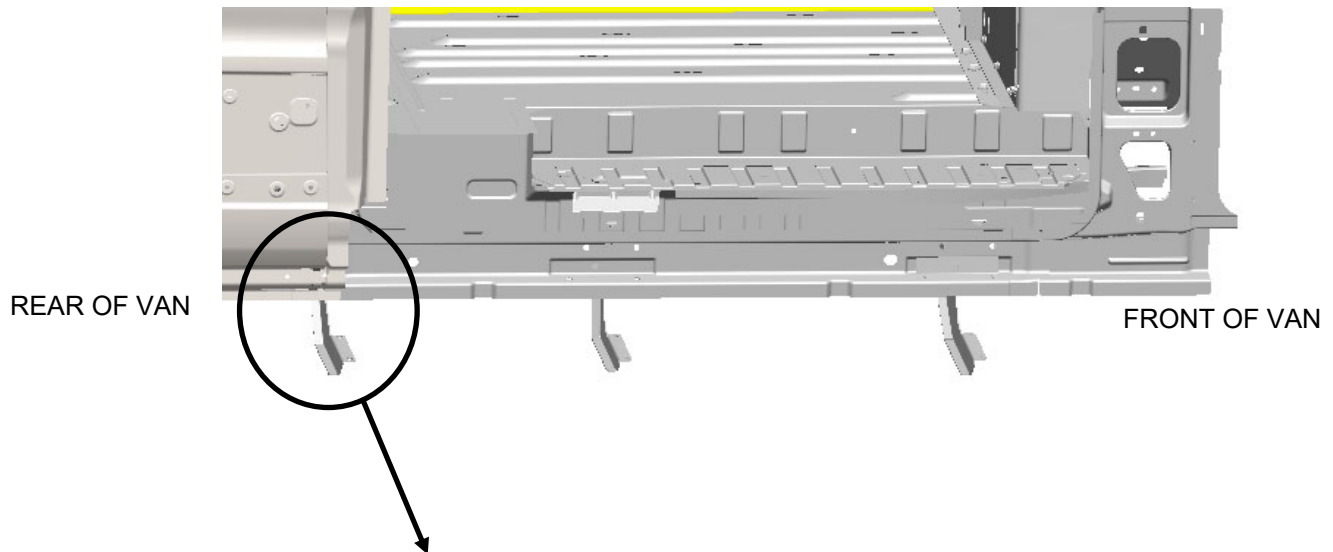


Instructions for Step 01

START WITH THE REAR BRACKET FIRST

BRACKET ORIENTATION

VIEW FROM TOP SIDE OUTSIDE CURBSIDE DOOR



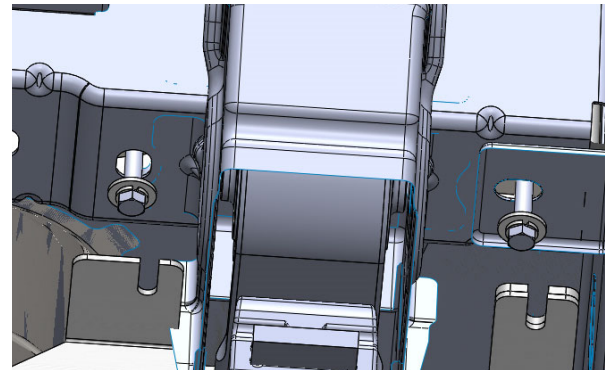
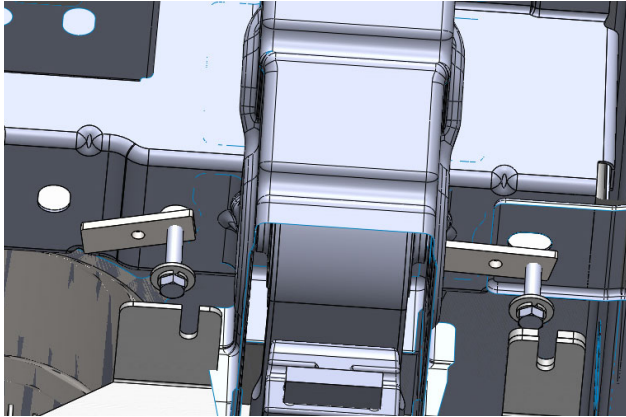
START WITH THE REAR BRACKET

Instructions for Step 02

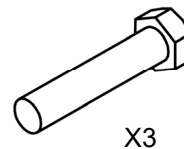
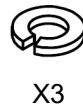
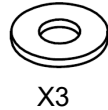
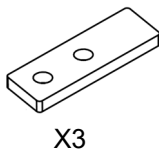
START WITH THE REAR BRACKET FIRST

VIEW FROM BOTTOM SIDE UNDER VAN

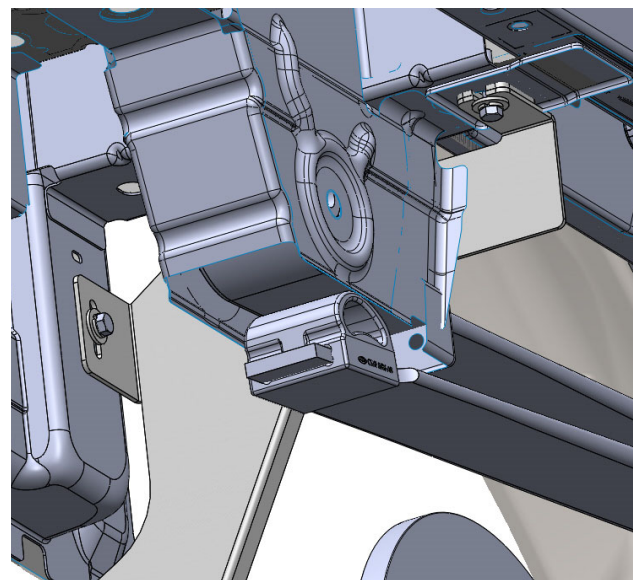
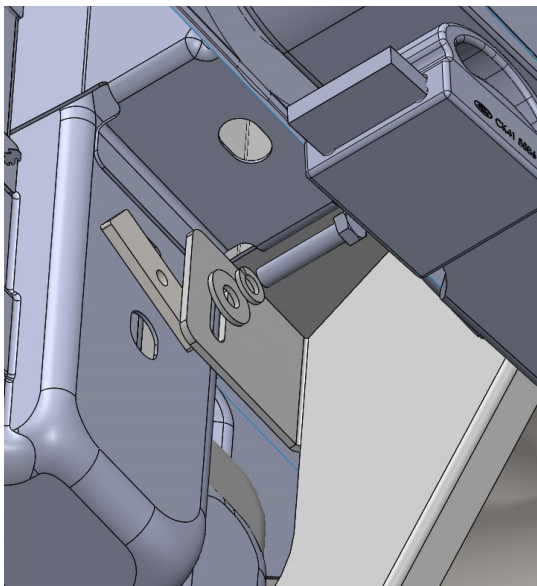
ADD THE ASSEMBLED FASTENERS INTO OEM BODY HOLES AS SHOWN.



INSTALLING THE REAR BRACKET

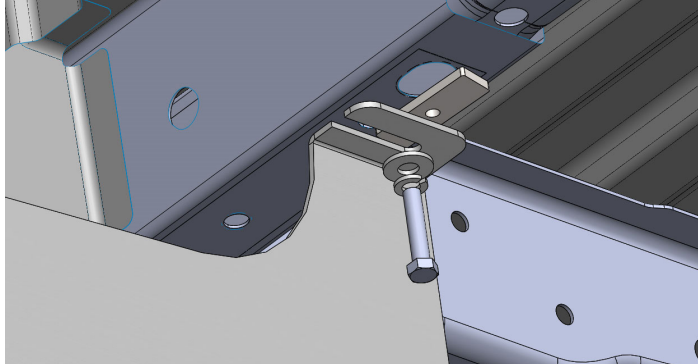
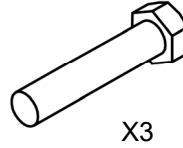
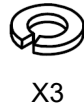
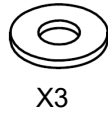
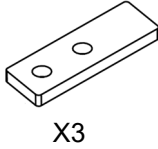


ADD THE ASSEMBLED FASTENERS THRU THE VERTICAL MTG PLATE AND INTO OEM BODY HOLE AS SHOWN. DO NOT FULLY TIGHTEN UNTIL AFTER THE TOP FASTENERS ARE ASSEMBLED AND TIGHTENED.



Instructions for Step 03

INSTALL THE MID AND FRONT BRACKETS NEXT



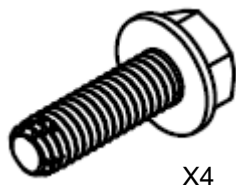
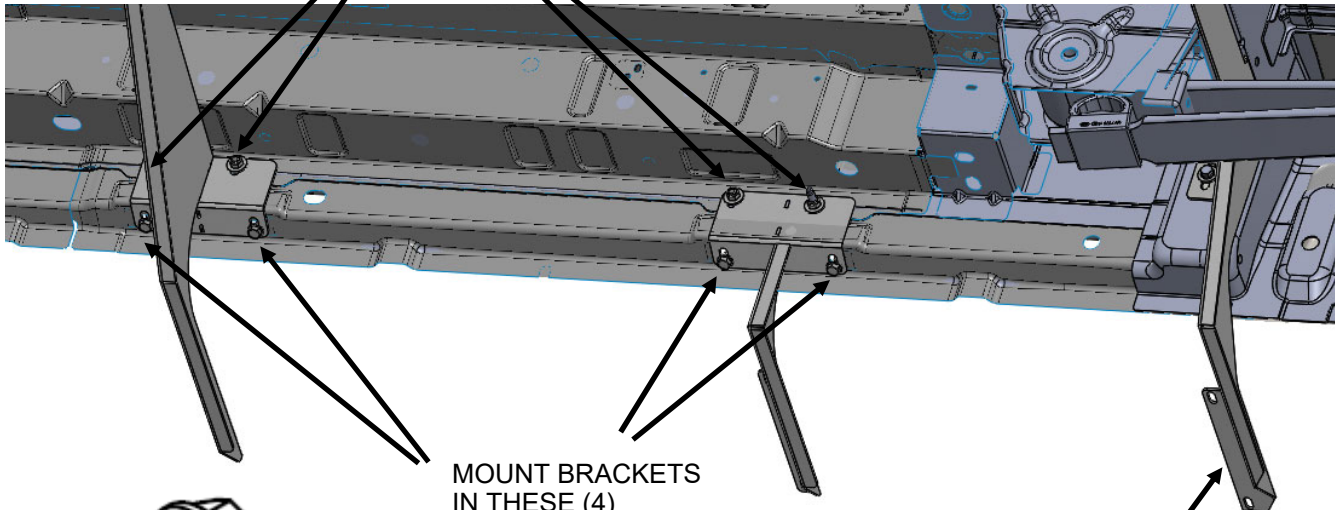
ONE PER LOCATION
(4) TOTAL

THESE (4) MOUNTING
LOCATIONS WILL HAVE
OEM STUDS. INSTALL
BRACKETS TO THESE
LOCATIONS USING
WASHERS AND M8
NUTS SHOWN BELOW



ONE PER LOCATION
(4) TOTAL

FRONT OF VAN

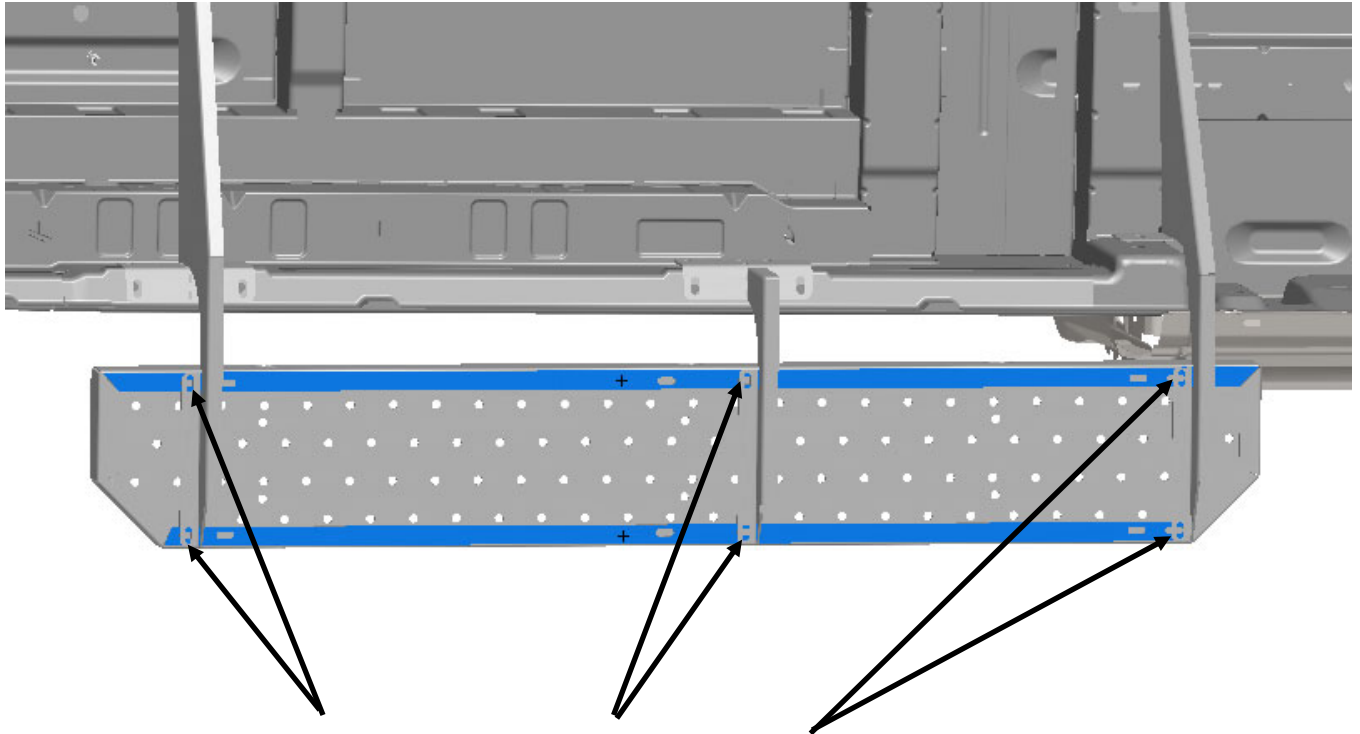


MOUNT BRACKETS
IN THESE (4)
LOCATIONS USING
THE (4) THREAD
CUTTING FASTENERS
PROVIDED.

INSTALLED REAR
BRACKET

Instructions for Step 04

INSTALL THE STEP



USING THE (6) HOLES SHOW ABOVE, MOUNT THE STEP TO THE BRACKETS. EACH OF THESE HOLES ARE SLOTTED ALLOWING YOU TO ADJUST THE STEP SO IT IS SQUARE TO THE VEHICLE. PLEASE USE FASTENERS CALLED OUT BELOW.



X6



X6

**DOUBLE CHECK ALL FASTENER LOCATIONS TO BE SURE THAT ALL FASTENERS ARE TIGHTENED TO SPECIFICATIONS.
YOUR INSTALLATION IS NOW COMPLETE!
STOW THIS COPY IN THE VEHICLE FOR FUTURE REFERENCES!**