

PRODUCT WEIGHT
107 LBS

WIDTH x DEPTH x HEIGHT
RAM PROMASTER

CAPACITY
N/A

COLOR
GRAY

CATALOG NUMBER
SPARPM

PRODUCT FEATURES

THE SLIDING PARTITION FOR THE RAM PROMASTER LOW AND HIGH ROOF VANS. PARTITION ALLOWS FOR FULL SEAT TRAVEL AND PARTIAL DECLINE OF BOTH THE DRIVER AND PASSANGER SEATS. PARTITION WIL WORK WITH BOTH SINGLE AND DUAL SLIDING DOOR MODELS. ACCESSORIES CAN BE MOUNTED TO THE PASSANGER SIDE PANEL WITH EXISTING HOLES OR DRILLED HOLES. SEE NEXT PAGES FOR ACCESSORIES.

SEE PAGE 2 FOR APPLICATION NOTES AND ACCESSORIES, OTHER PRODUCTS THAT WORK WITH THIS UNIT.



CATALOG NUMBER SPARPM

PRODUCT APPLICATION

**This product is designed to be installed into the RAM PROMASTER
LOW AND HIGH Roof Cargo Van**

ACCESSORIES THAT WILL WORK WITH THIS PRODUCT

CATALOG NUMBER	DESCRIPTION
PA7	REFLECTOR KIT (EXISTING HOLES FOR MOUNTING)
PA8	FIRE EXT.1A:10BC 2.5# (DRILLING REQUIRED TO MOUNT)
PA9	FIRST AID TRAY (EXISTING HOLES FOR MOUNTING)
SPARHLK	SLIDING PARTITION, LOCKING HANDLE KIT

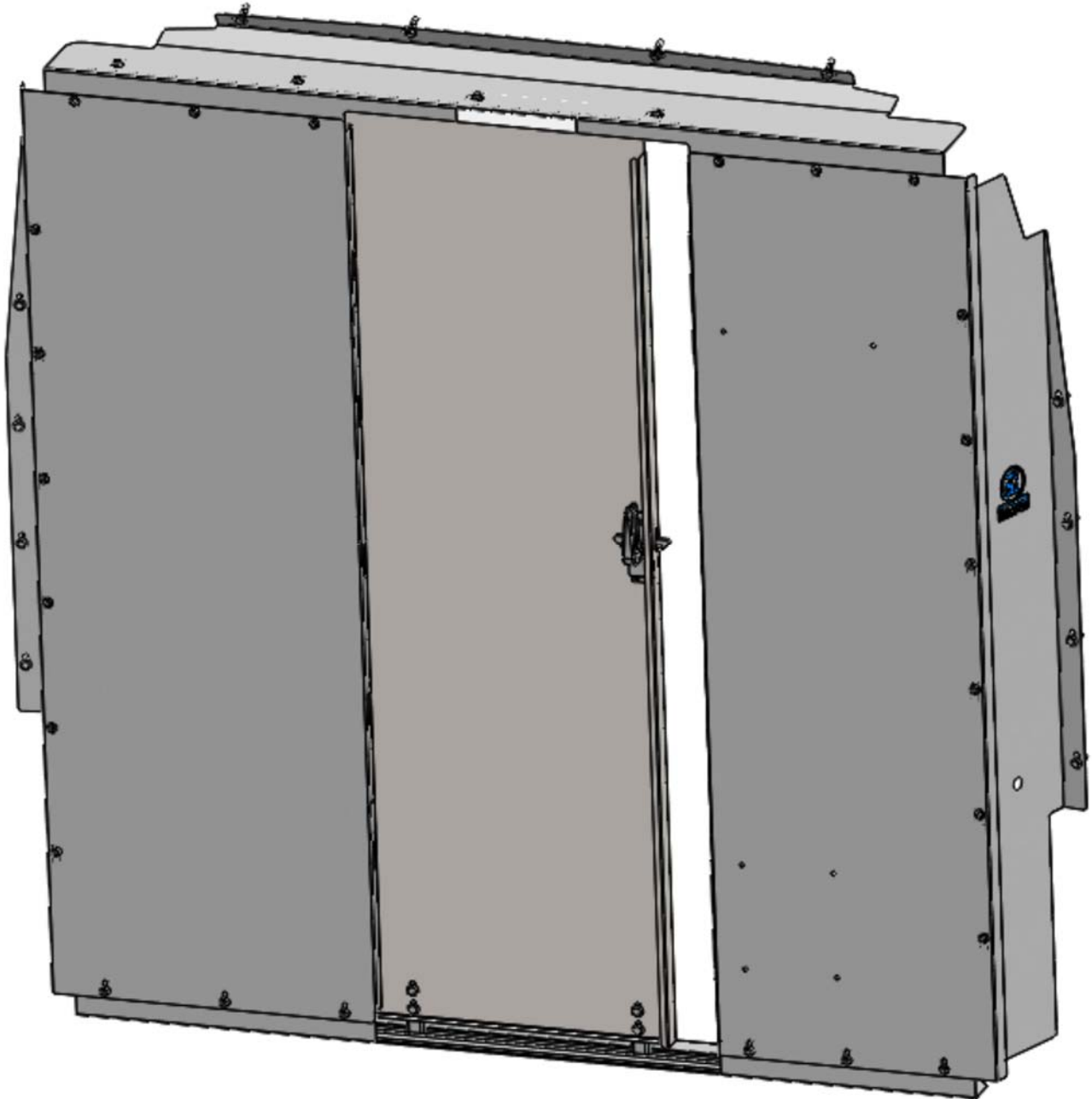
SPECIAL APPLICATION NOTES

Introduction / Comments:

ASSEMBLY INSTALLATION INSTRUCTIONS FOR THE SPARPM—SLIDING PARTITION, RAM PROMASTER, REGULAR AND HIGH ROOF CARGO VAN

Note:

It is advised that all fasteners used in this assembly and installation should be checked for tightness at the following intervals: @ 2-weeks and again @ 6-weeks of operation. This preventive maintenance step must be completed to ensure your Partition gives you long service life.



SPARPM SLIDING PARTITION, RAM PROMASTER VAN

- PRECAUTIONS -





 **CAUTION** 
**THE USE OF AIR IMPACT TOOLS CAN
OVER-TORQUE FASTENERS AND
CAUSE FASTENER FAILURE!**



 **CAUTION** 
**ALL INSTALLATION HOLES SHOULD BE SEALED
WITH SILICON OR BUTYL SEALANT TO PREVENT
EXHAUST FUMES FROM ENTERING THE VEHICLE!**



 **DANGER** 
**INSPECT FOR FUEL TANK, FUEL LINES, BRAKE LINES, HIGH
VOLTAGE BATTERIES AND ELECTRICAL LINES PRIOR TO
DRILLING TO AVOID DAMAGING CRITICAL VEHICLE SYSTEMS
OR INJURY TO INSTALLER DURING INSTALLATION PROCESS!**



 **CAUTION** 
**TO AVOID DAMAGING THE VEHICLE ALWAYS
USE DRILL STOPS WHEN DRILLING ANY IN-
STALLATION HOLES!**



- IMPORTANT WARRANTY REQUIREMENTS -

1. SUBSTITUTING ADRIAN STEEL SPECIFIED FASTENERS FOR ASSEMBLY AND/OR INSTALLATION WILL VOID YOUR PRODUCT WARRANTY.
2. ALL HOLES DRILLED INTO VEHICLE SHOULD HAVE THE RAW METAL EDGES SEALED WITH A SELF-ETCHING PRIMER TO RESIST CORROSION AND POTENTIAL FASTENER POINT FAILURE.
3. ALL FASTENERS USED IN THE INSTALLATION OF THIS PRODUCT SHOULD BE TIGHTENED TO THE TORQUE(S) SPECIFIED IN THESE INSTRUCTIONS.
4. THESE INSTRUCTIONS SHOULD BE KEPT WITH THE VEHICLE.

THE BASIC TOOLS NEEDED FOR MOST INSTALLATIONS



DRILL



DRILL BIT WITH
STOP



RATCHET, SOCKETS
AND/OR WRENCHES



SCREWDRIVERS



MEASURING TAPE

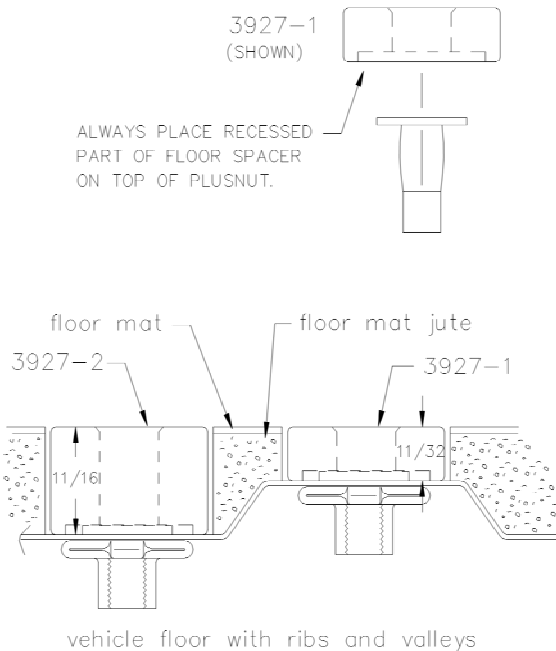
ADDITIONAL TOOLS MAY BE NEEDED FOR THIS INSTALLATION AND THEY WILL BE IDENTIFIED IN THE STEPS THAT FOLLOW.

If your vehicle contains carpet or a rubber floor mat you will need to prepare the mounting location. Position the product to be installed into the vehicle and once you are satisfied with the mounting locations, mark the mounting locations. Using a 1-3/16" diameter carpet cutter (P/N: 31183-0). Select the appropriate floor spacers as shown in the illustration. Set those aside for use later into the installation process.

Using the correct drill bit size for the selected plusnut, drill the mounting holes in the vehicle sheet metal to prepare for installing the plusnuts.

If you are thru-bolting at any of the locations simply drill a hole that is 1/16" larger than the bolt size(s) for those locations.

Once you have drilled the holes into the vehicle, the raw metal edges should be sealed using a self-etching primer to resist corrosion and potential fastener point failure.



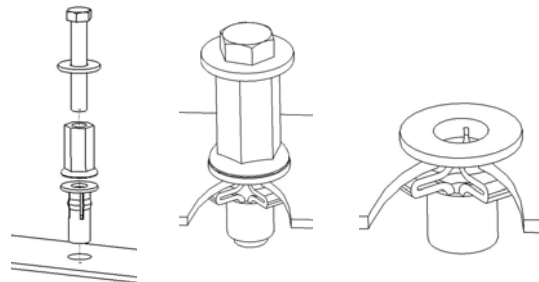
A PLUSNUT (RIVNUT) SETTING TOOL IS REQUIRED FOR PLUSNUT (RIVNUT) INSTALLATION AND IS SUPPLIED WITH THIS KIT. OR USE AN AIR POWERED PLUSNUT SETTING GUN.

1/4-20UNC Plusnut (FAS0052) Use 3/8" dia. drill w/stop

FAS0080 SCREW, HXHD, 1/4-20UNCx2.00", G8
FAS0067 WASHER, FLAT, 1/4"ID
22200-0 PLUSNUT TOOL

5/16-18UNC Plusnut (FAS0091) Use 1/2" dia. drill w/stop

FAS0095 SCREW, HXHD, 5/16-18UNCx2.00", G8
FAS0086 WASHER, FLAT, 5/16"ID
22200-0 PLUSNUT TOOL

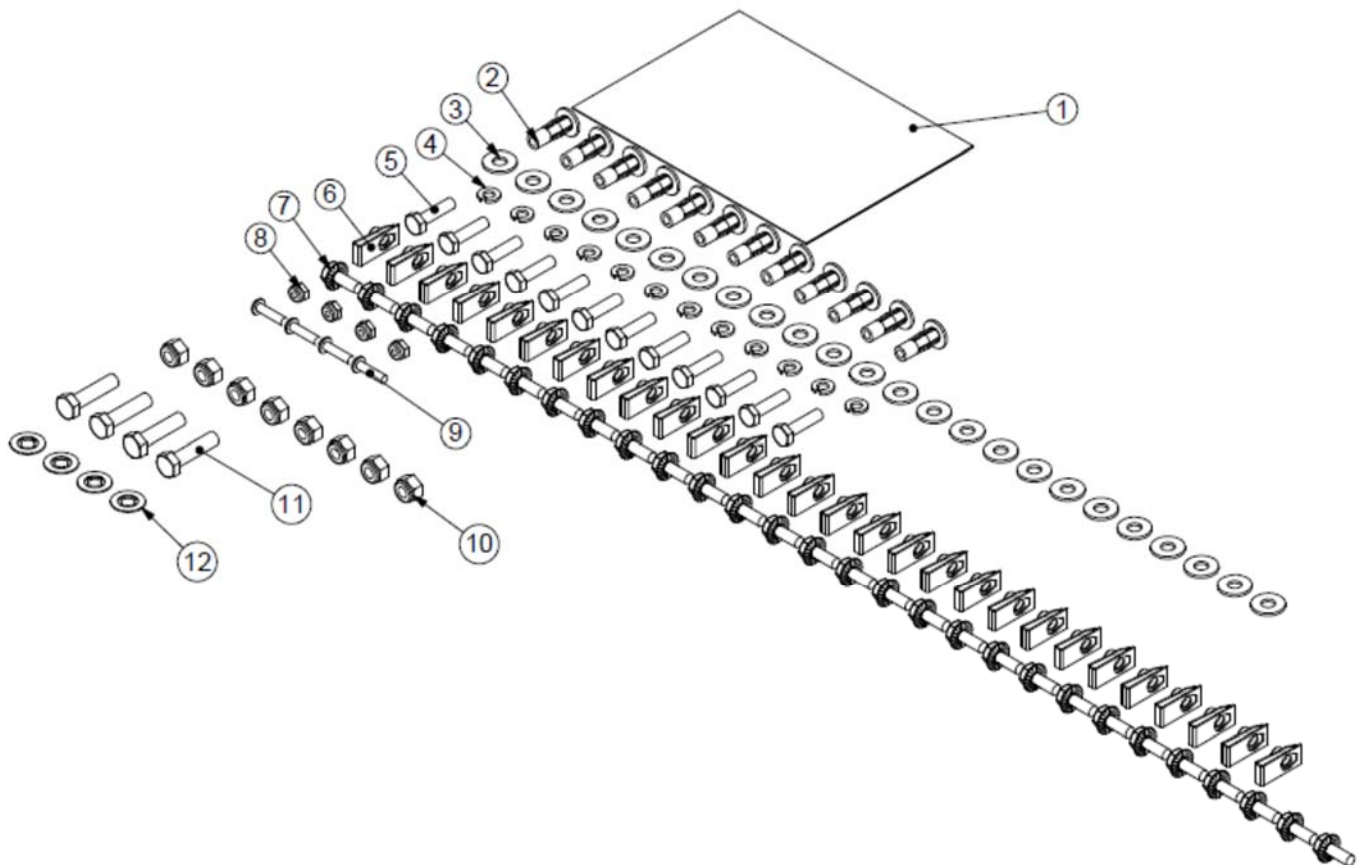


Place barrel of the plusnut body in sheet metal thru hole until flange is flush with sheet metal.

Using a 9/16" combination wrench of plusnut tool body and a second hand wrench, ratchet, or air tool, rotate the hex bolt head CW to draw plus nut flanges up (set the plusnut).

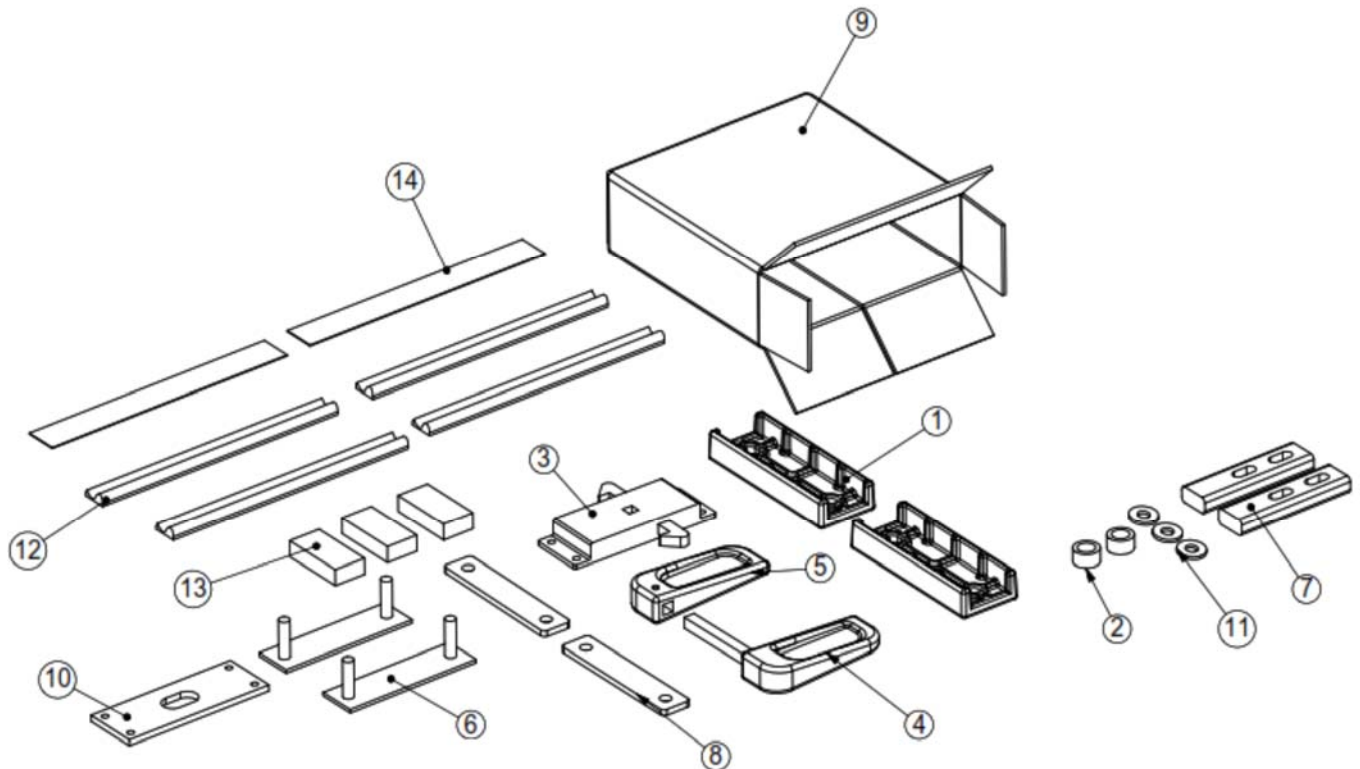
Assembly and Installation Fastener Identification Sheet (BAG62761)

ITEM NO.	PART NUMBER	DESCRIPTION	QTY.
1	BAG0507-A	5" x 7" 3MIL AUTOBAG	1
2	FAS0052	PLUSNUT, 1/4-20 PB DC	12
3	FAS0124	WASHER,FLAT USS 1/4 ZN	24
4	FAS0060	WASHER,LCK SPLIT 1/4 ZP	12
5	FAS0078	SCREW,HH 1/4-20X1 G8 ZP	12
6	FAS0274	NUT, CLIP-ON, U-STYLE, 1/4-20UNC	28
7	FAS0018	SCREW,HH SFLNG 1/4-20X.62 ZP	28
8	FAS0029	NUT,HEX NLK 10-24 ZP	4
9	FAS0674	SCREW,BHCS 10-24X.75 SS	4
10	FAS0090	NUT,HEX NLK 5/16-18 ZP	8
11	FAS0587	SCREW,HH 5/16-18X1.25G5ZN	4
12	FAS0557	WASHER, RET 5/16, NY	4



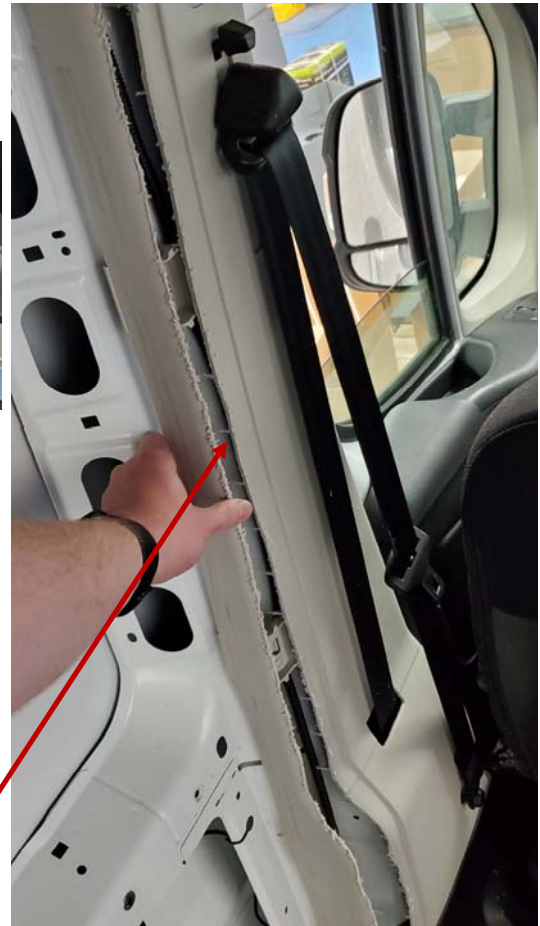
Assembly and Installation HARWARE KIT (HDW62569)

ITEM NO.	PART NUMBER	DESCRIPTION	QTY.
1	30245-0	GLIDE-LK8	2
2	59180	BUSHING, 0.750 x .419 LG	2
3	58084-0	LATCH ASSEMBLY	1
4	58084-1	HANDLE AND SHAFT ASSEMBLY	1
5	58084-2	HANDLE ASSEMBLY	1
6	53865	GLIDE SUPPORT ASM, LK	2
7	59183	GUIDE BLOCK	2
8	59182-G	GUIDE BAR BACKER, GRAY	2
9	CRT06987-A	CARTON HARDWARE FOR KD	1
10	59288	LATCH SPACER	1
11	FAS0688	WASHER, FLAT .36X.81 BK	3
12	52666	GASKET, D-SECTION, 8"LG	4
13	60991	FOAM STRIP 1/2"X1.0"X2.0"	3
14	51401	CONSPICUITY TAPE, 1 X 8	2



VEHICLE PREP — CUT THE B-PILLAR TRIM ON BOTH THE DRIVER'S AND PASSAN-GE'S SIDE B-PILLARS. ALSO CUT THE HEADER TRIM TO EXPOSE THE HEX HOLES FOR MOUNTING THE HEADER OF THE PARTITION.

Step 1: Cut the header trim to expose the 4 hex holes in the roof bow.



Step 2: Use tape to mark a line start of the corner on the b-pillar trim. You will want to remove the back section and the curved part of the trim to make room for mounting the partition to the b-pillars.

Step 03: Cut along tape using a high speed oscillating tool. It is recommended using a circular saw blade for minimal debris. After cut is made, the rear portion of the B-Pillar can easily be removed.



Picture is for reference. Once rear portion is removed, it will look similar to this.

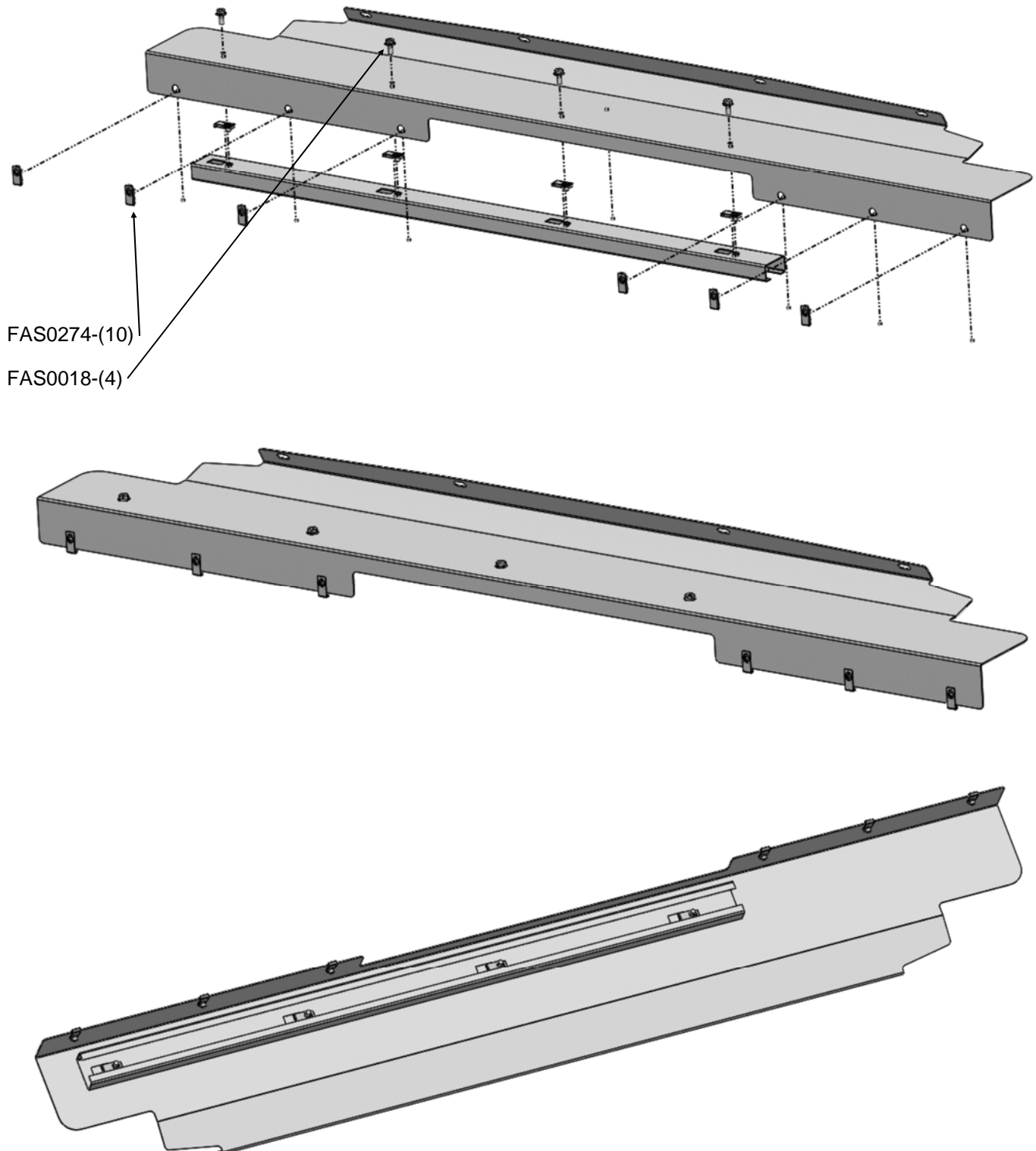
Carbide Circular Saw Blade for minimal debris.



Step 04: Using a box cutter or deburring tool, cut away the excess plastic pieces and use a vacuum to clean them from the floor of the van. It is important the plastic debris is never cleaned with an air hose, this could lead to plastic lodged into the seatbelt mechanism and cause safety issues.

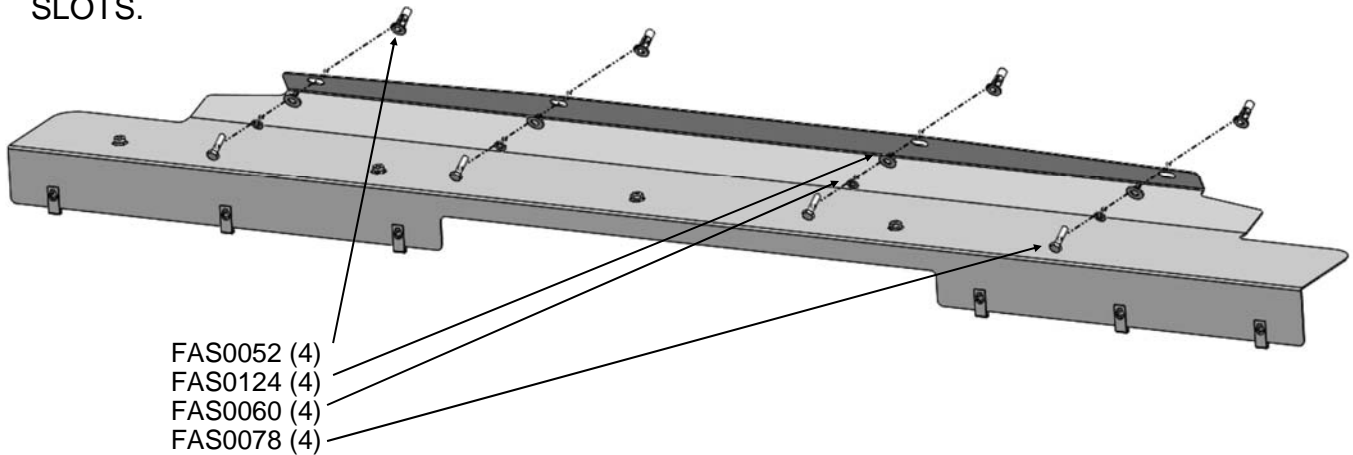
STEP 1 - PRE-ASSEMBLE HEADER AND HEADER RAIL.

USE THE (FAS0274) 1/4-20 U NUT CLIPS (10 PLACES) INTO THE HEADER AND HEADER RAIL. THEN USE (FAS0018) 1/4-20 FLANGED BOLT (4 PLACES) TO JOIN THE HEADER AND HEADER RAIL TOGETHER. ***DO NOT OVER TIGHTEN FASTENERS***



STEP 2 - FASTEN ASSEMBLED HEADER TO THE ROOF BOW.

MOUNT (4) FAS0052 PLUSNUTS INTO THE HEX HOLES IN THE ROOF BOW, NO DRILLING REQUIRED. THEN SECURE THE HEADER WITH (4) FAS0124 WASHER, (4) FAS0060 LOCK WASHER, AND (4) FAS0078 1/4-20 BOLT. CENTER FASTENERS IN SLOTS.



STEP 3 - ASSEMBLE AND INSTALL FOOTER.

INSERT (FAS0274) 1/4-20 U NUT CLIPS INTO THE FOOTER (6 PLACES) AND THEN INSTALL THE FOOTER TO THE VAN USING THE OEM D-RING HOLES. RE-USE THE OEM D-RINGS TO MOUNT THE FOOTER.

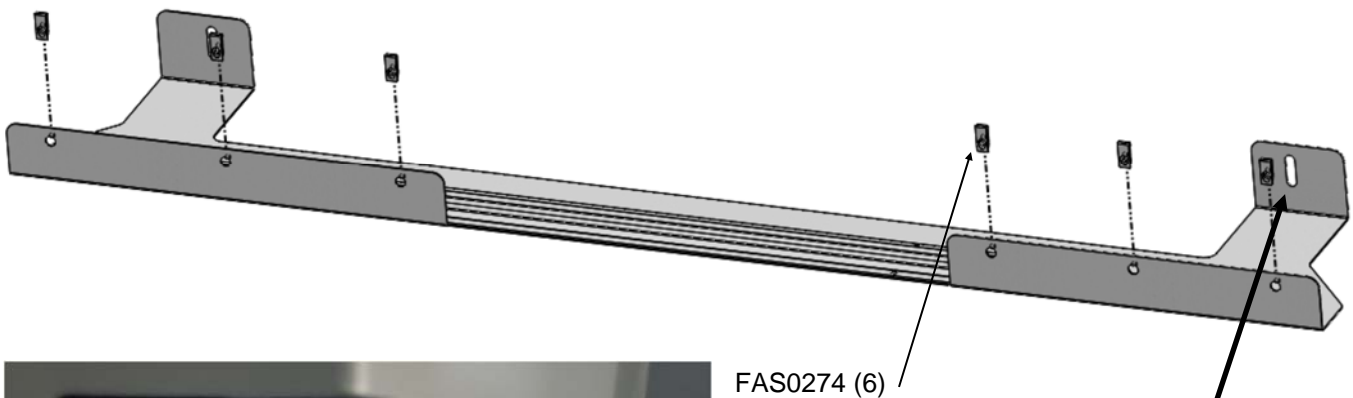
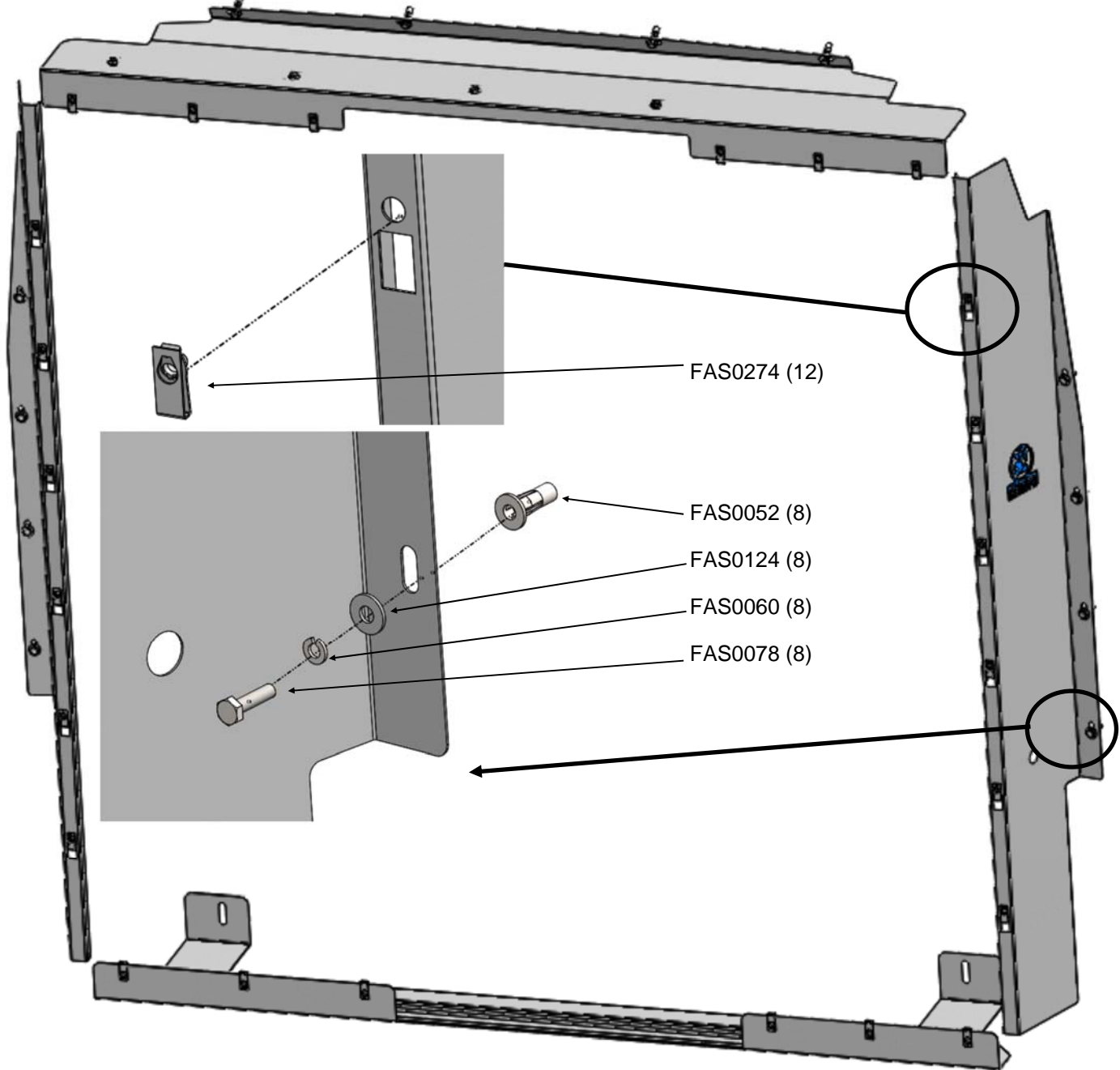


IMAGE SHOW THE FOOTER INSTALLED WITH THE OEM D-RINGS. (IMAGE SHOW FORD TRANST D-RING) USE THE SPRINTER OEM D-RING FOR THIS INSTALL.

STEP 4 - ASSEMBLE AND INSTALL DRIVER AND PASSANGER SIDE WINGS.

INSERT THE (FAS0274) 1/4-20 U NUT CLIPS INTO THE WINGS (12 PLACES). MOUNT THE FAS0052 (8) PLUSNUTS IN THE B-PILLAR HEX HOLES, NO DRILLING NEEDED, (4) EACH SIDE. SECURE THE WINGS WITH FAS0124 WASHERS (8), FAS0060 LOCK WASHERS (8), AND FAS0078 1/4-20 BOLTS (8).

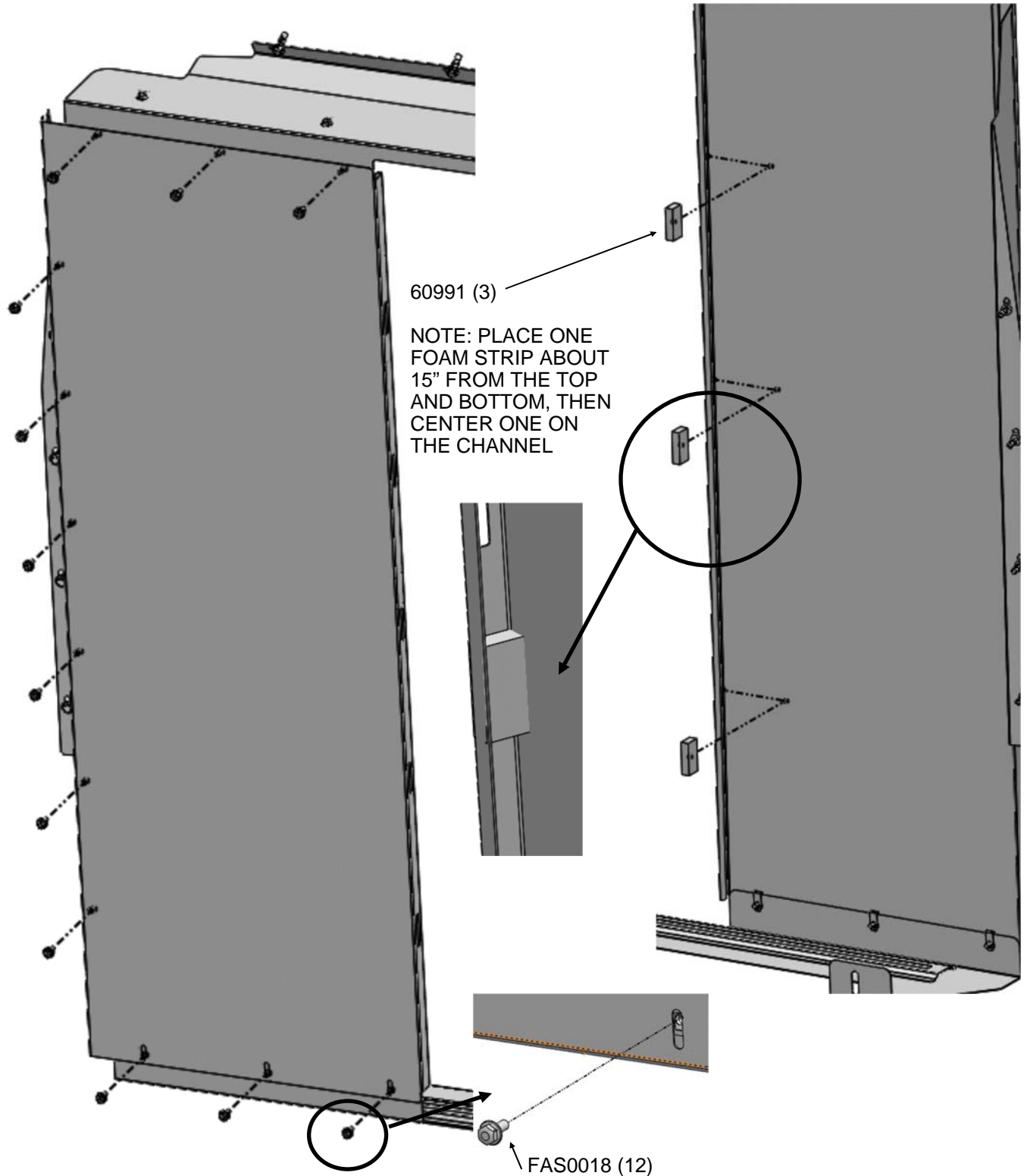


NOTE: WHEN TIGHTENING DOWN THE FASTENERS TO THE B-PILLARS CENTER THE SLOTS ON WING TO GET THE FASTENERS TO SET IN THE MIDDLE OF THE SLOTS.

NOTE: DO NOT OVER TIGHTEN FASTENERS TO B-PILLAR, NO DRILLING OUT OEM HOLES REQUIRED.

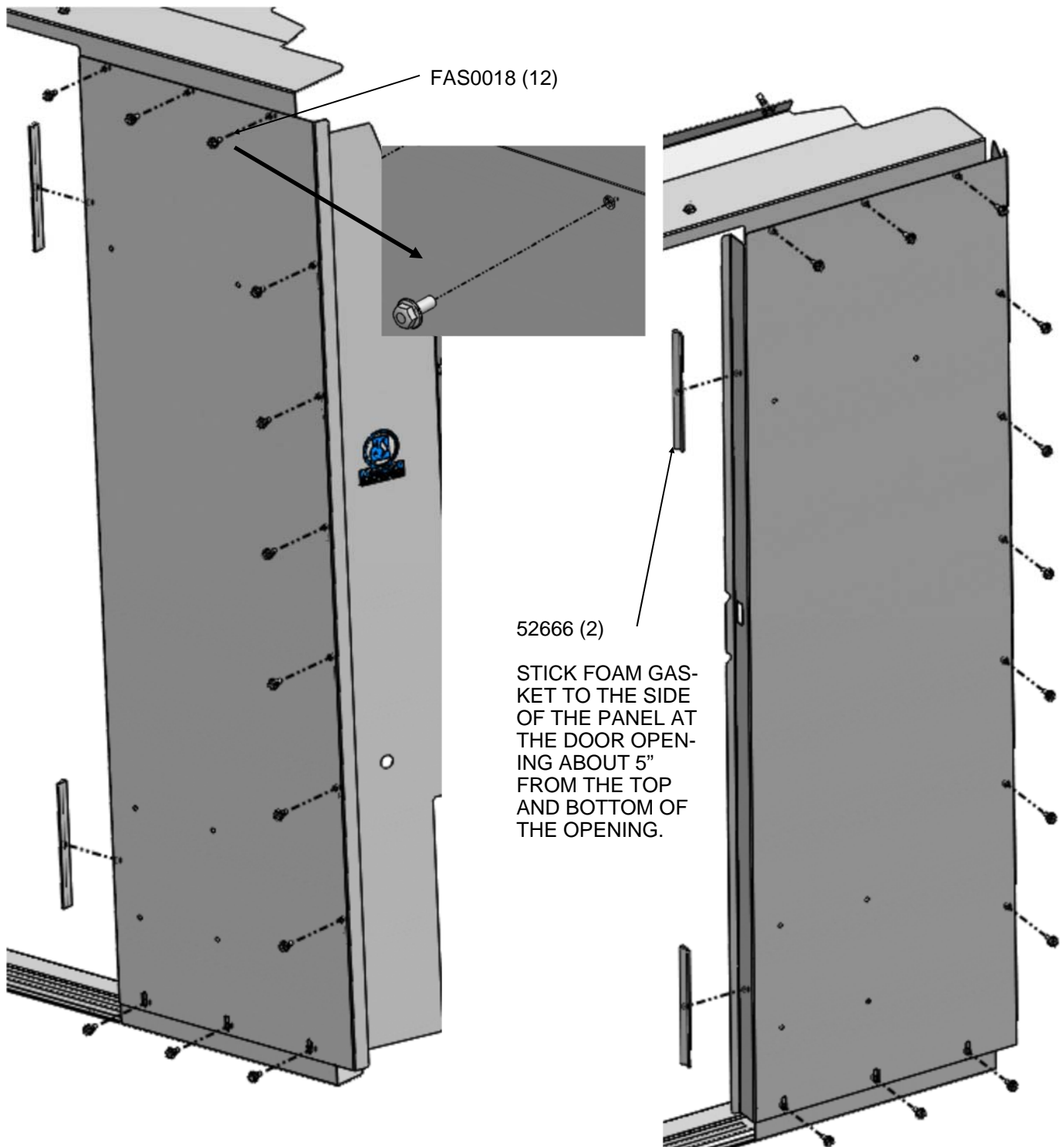
STEP 5A - MOUNT THE DRIVER SIDE PANEL.

MOUNT THE DRIVER SIDE PANEL WITH FAS0018 FLANG BOLTS (12 PLACES). ONCE THE PANEL IS MOUNTED STICK THE FOAM STRIPS (60991) FROM THE HARDWARE BOX TO THE CHANNEL ON THE CAB SIDE OF THE PARTITION AS SHOWN (3 PLACES)



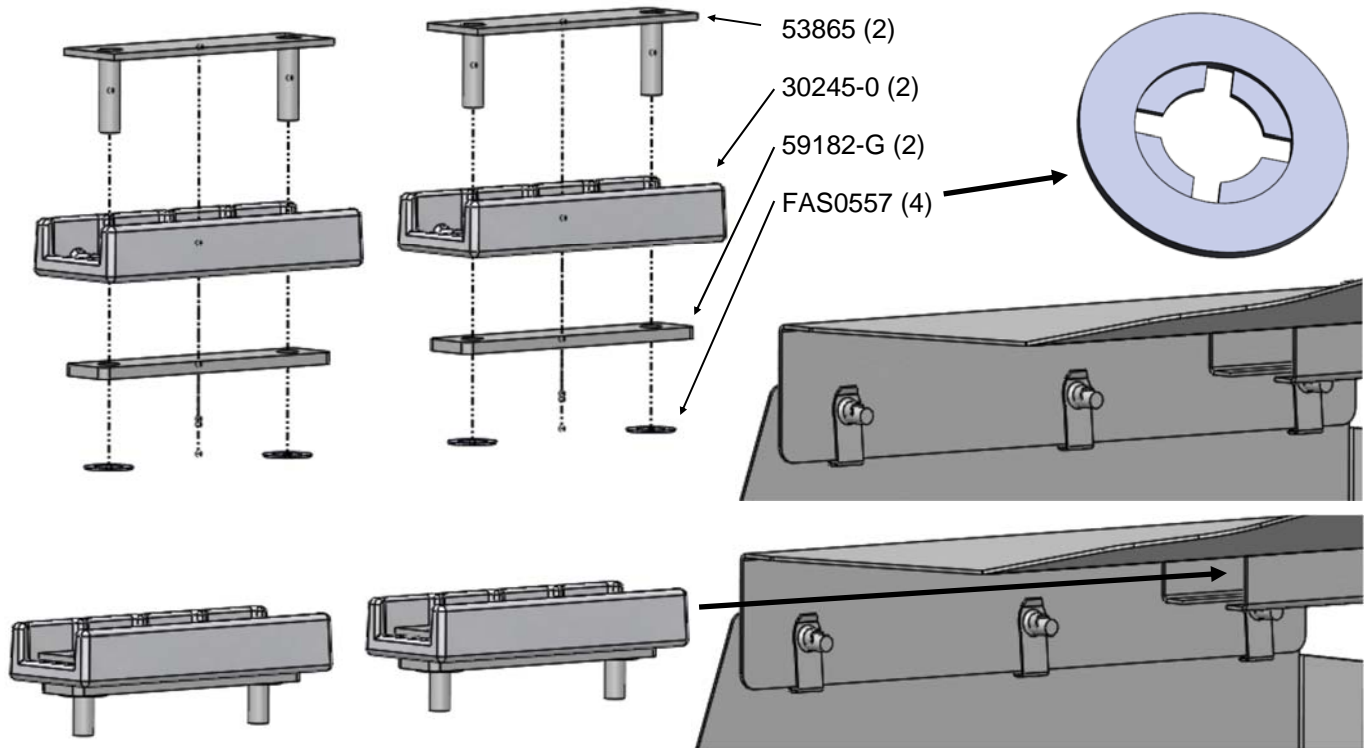
STEP 5B - MOUNT THE PASSANGER SIDE PANEL.

MOUNT THE PASSANGER SIDE WING WITH FAS0018 FLANG BOLTS (12 PLACES).
ONCE THE PANEL IS MOUNTED STICK THE FOAM GASKETS (52666) FROM THE HARDWARE BOX TO THE DOOR OPENING OF THE PARTITION AS SHOWN (2 PLACES)



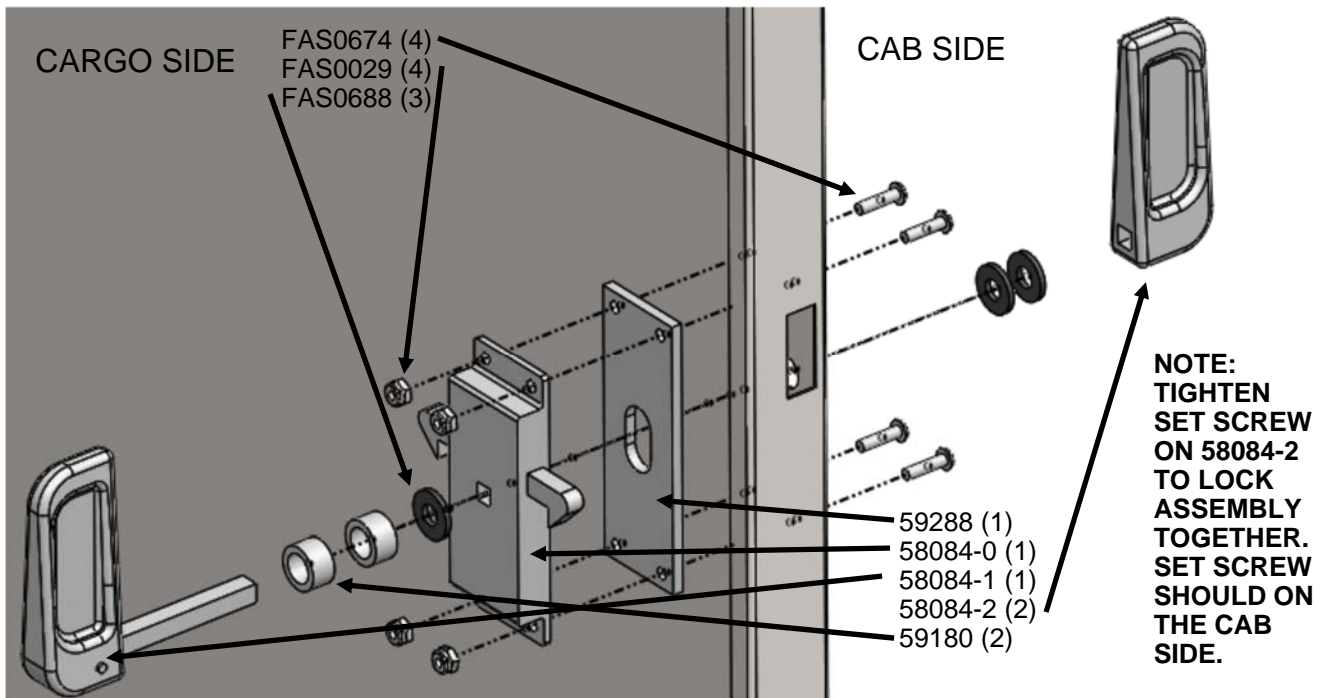
STEP 6 - ASSEMBLE TOP GLIDES AND INSERT THEM IN THE HEADER RAIL

ASSEMBLE THE TOP GLIDES AND INSERT THEM IN THE HEADER RAIL. PARTS 53865 (SUPPORT ASM), 30245-0 (GLIDE), AND 59182-G (GUIDE BAR) CAN BE FOUND IN THE HARDWARE KIT WHILE FAS0557 (RETAINING WASHER) CAN BE FOUND IN THE FASTENER BAG.



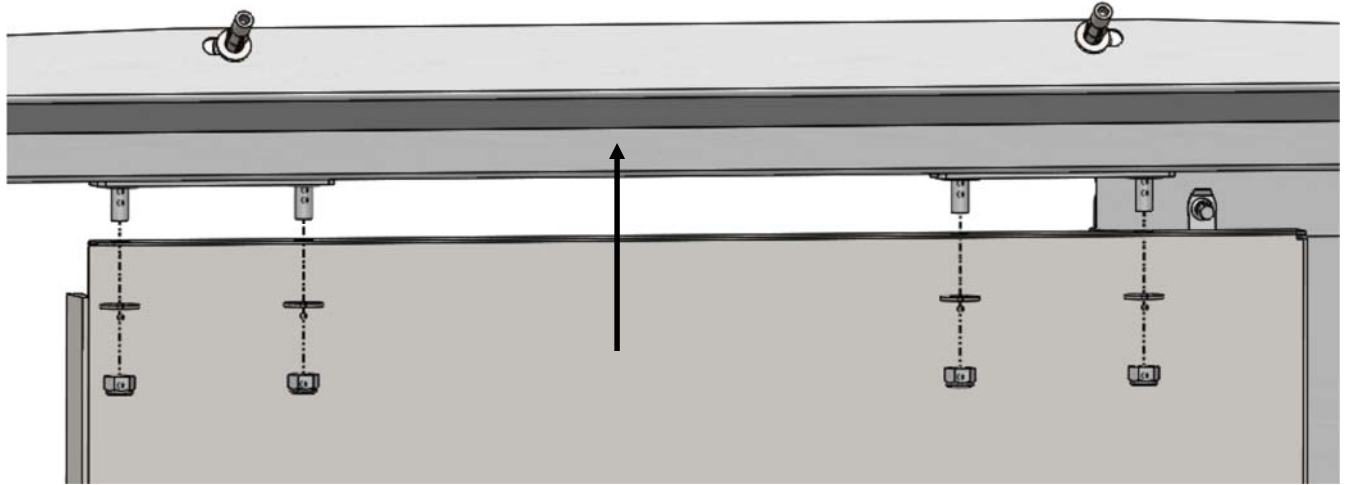
STEP 7 - ASSEMBLE DOOR LATCH

ASSEMBLE THE DOOR LATCH USING THE FOLLOWING HARDWARE AND FASTENERS.



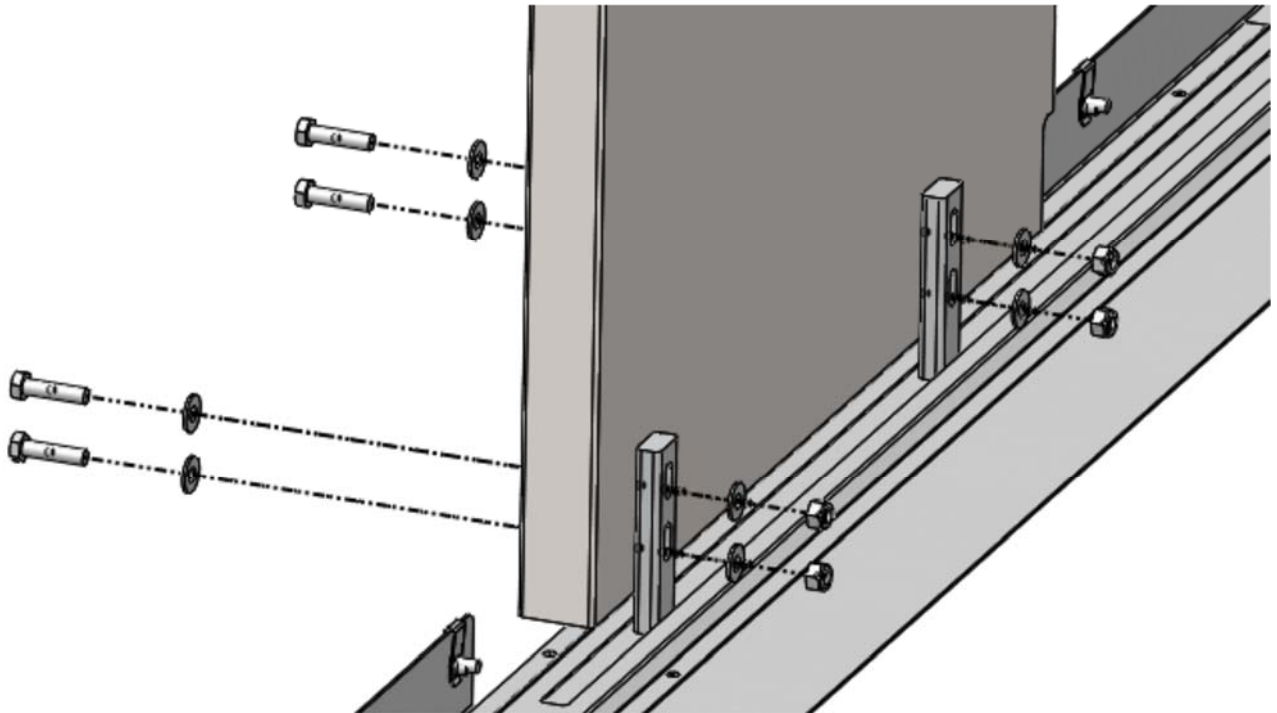
STEP 8 - MOUNT THE DOOR TO THE GLIDES.

MOUNT THE DOOR TO THE GLIDES USING FAS0124 WASHER (4) AND FAS0090 NY-LOCK NUT (4).



STEP 9 - MOUNT THE BOTTOM GLIDES TO THE DOOR AND ADJUST.

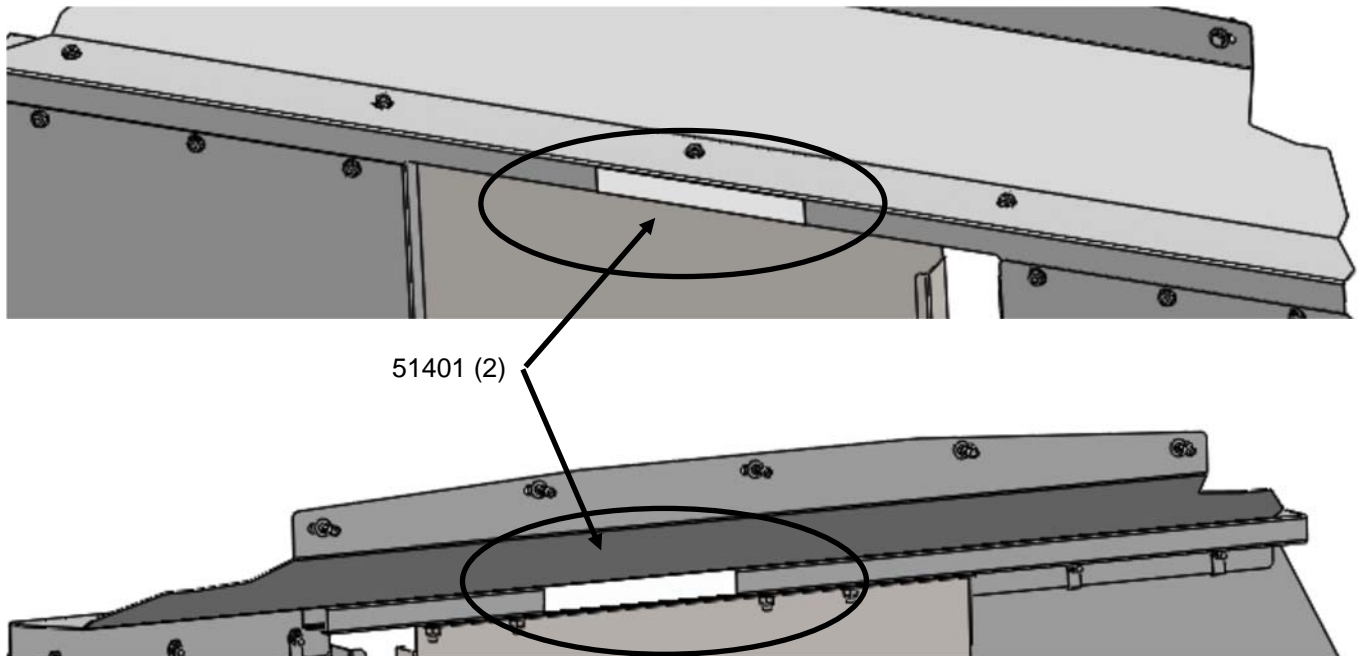
MOUNT THE BOTTOM GLIDES (59183) TO THE DOOR WITH FAS0587 5/16 BOLT (4), FAS0124 WASHER (8), AND FAS0090 NYLOCK NUT (4).



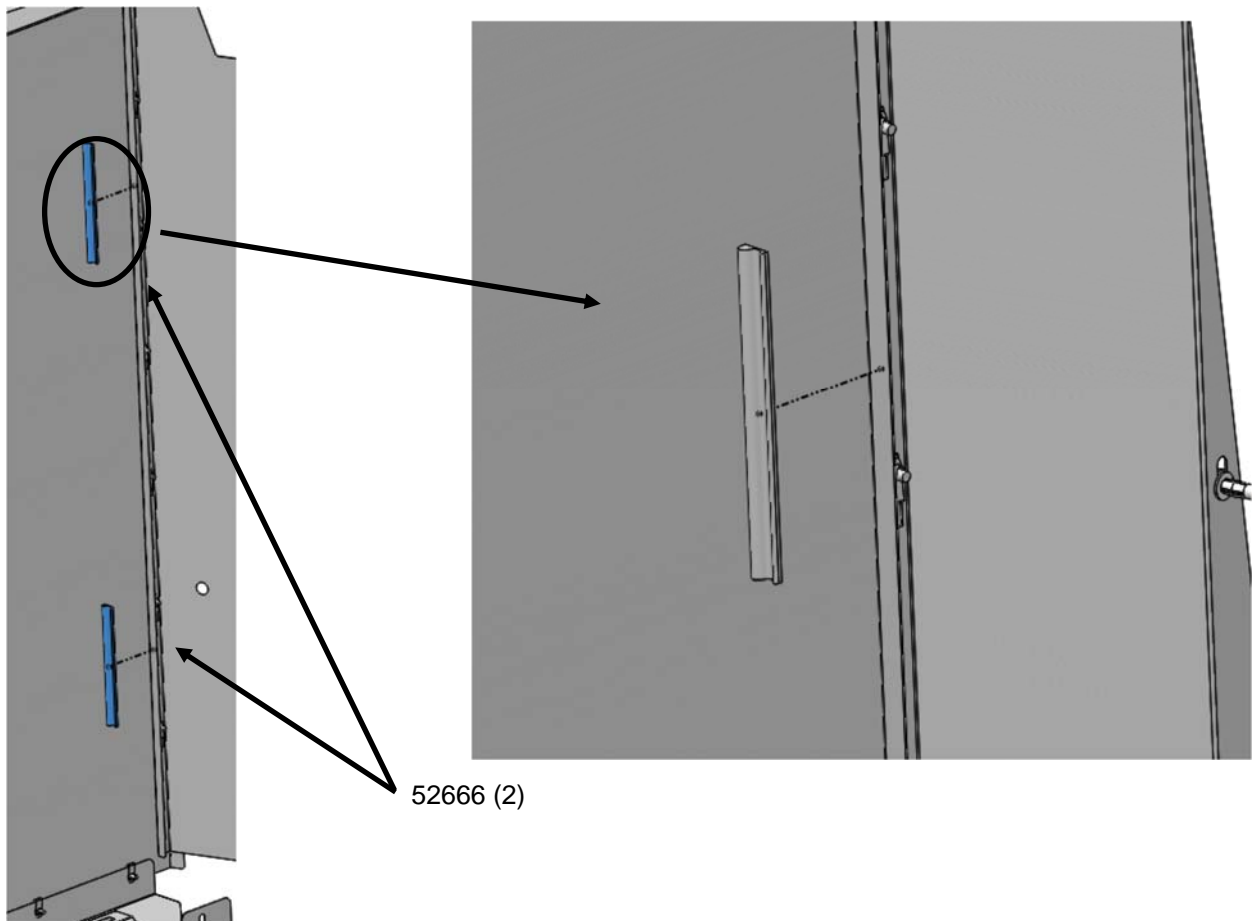
NOTE:

ADJUST THE BOTTOM GLIDES UPWARD ABOUT 1/16" OFF THE FOOTER SO THE DOOR CAN SLIDE FREELY BUT STILL BE CONTAINED BY THE FOOTER CHANNEL.

STEP 9 - STICK ON 51401 CONSPICUITY TAPE ON BOTH SIDES OF THE HEADER RAIL. CENTER THE TAPE OVER THE MIDDLE OF THE DOOR OPENING.

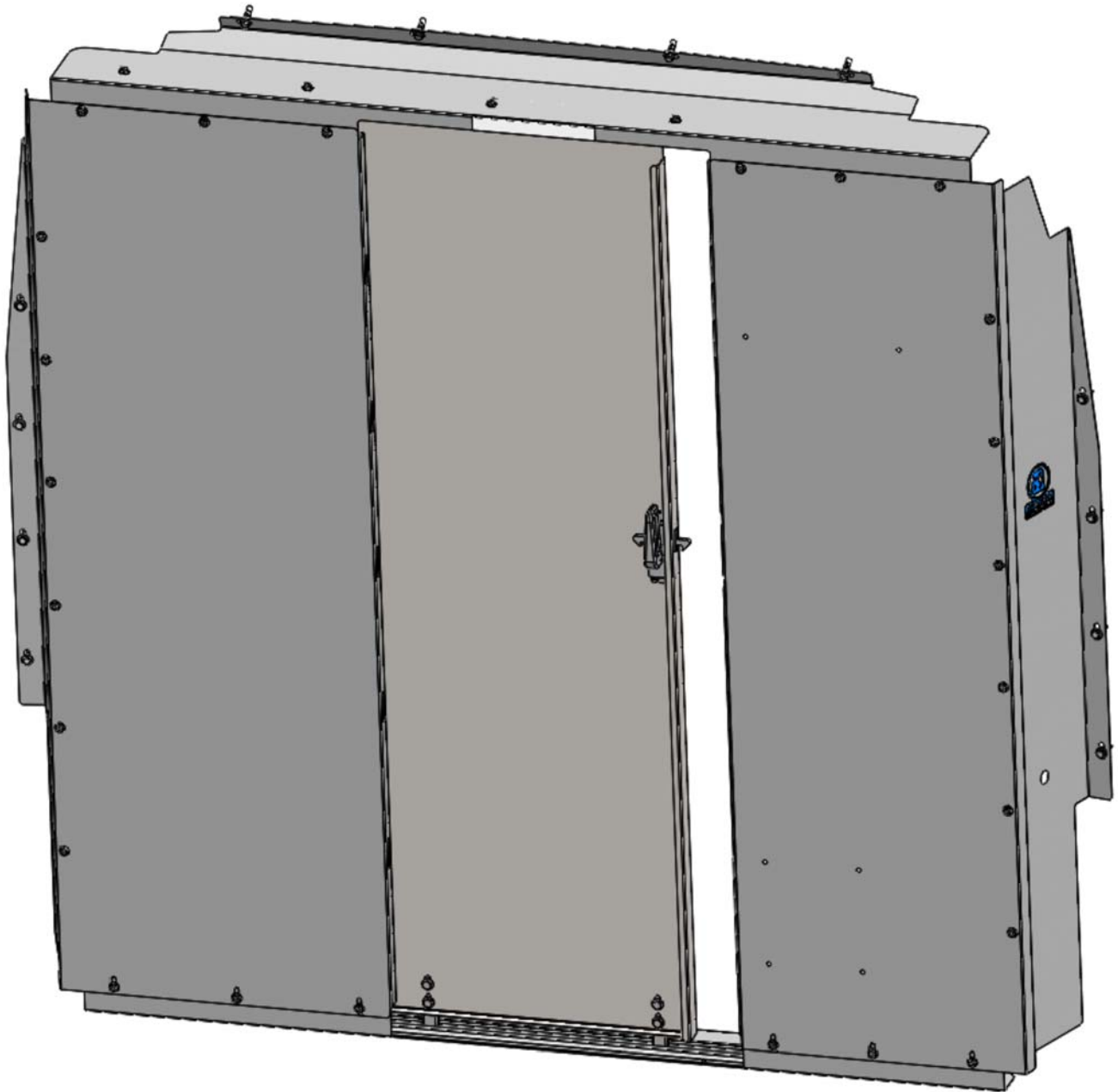


STEP 10 - STICK FOAM GASKET, 52666 (2) TO SIDE OF THE DRIVER'S SIDE WING AND PANEL. ABOUT 10" FROM THE TOP AND BOTTOM. THIS HELPS TO DOOR FROM SLAM-ING OPEN.





INSTALLATION IS COMPLETE! MAKE SURE THAT ALL FASTENERS THAT WERE LEFT LOOSE FOR THE INSTALL ARE NOW TIGHTED.



INSTALLATION IS COMPLETE! MAKE SURE THAT ALL FASTENERS THAT WERE LEFT LOOSE FOR THE INSTALL ARE NOW TIGHTED.