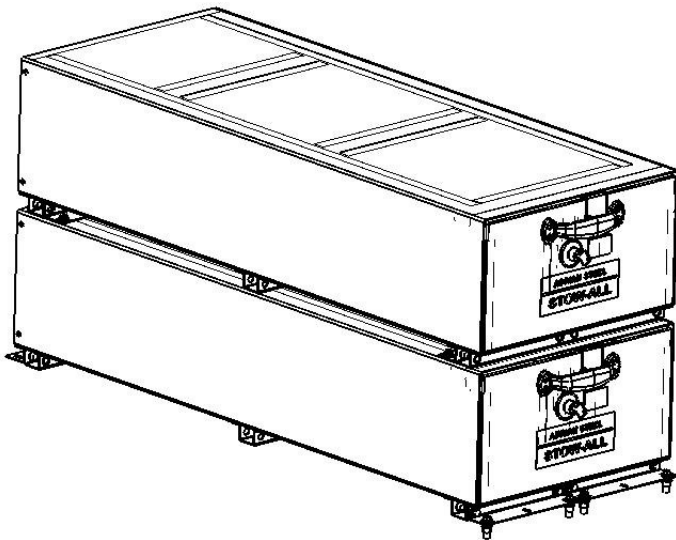




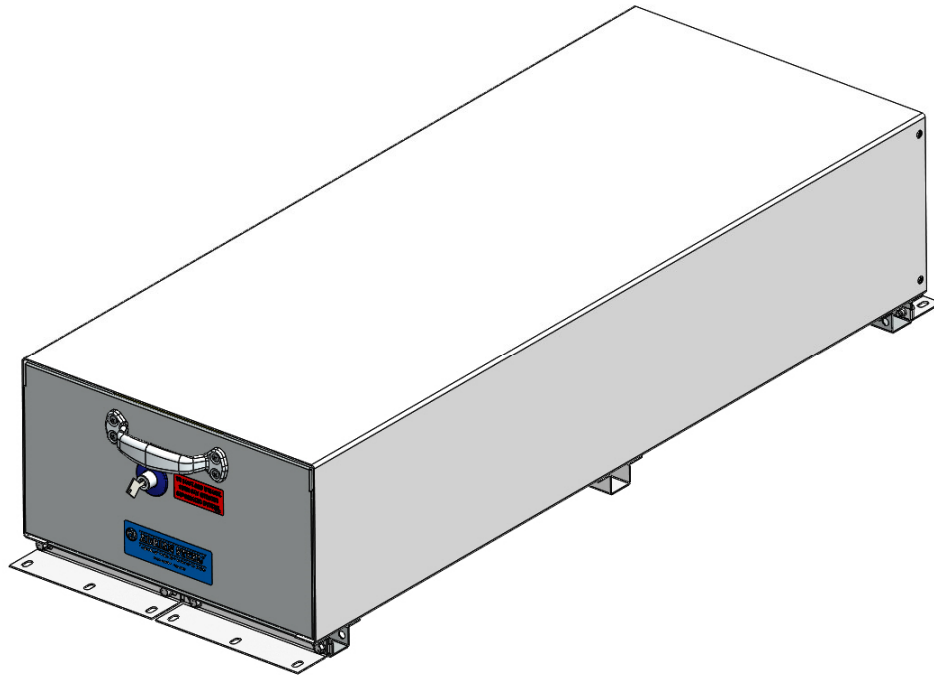
ADRIAN STEEL®

Cargo Management Solutions for Commercial Vehicles

Assembly/Installation Instructions and Owners Manual



TYPICAL STACKED STOWALL
INSTALLATION



SA-20 STOWALL, DOUBLE SHOWING SINGLE AND STACKED CONFIGURATION

- PRECAUTIONS -





 **CAUTION** 
**THE USE AIR IMPACT TOOLS CAN
OVER-TORQUE FASTENERS AND
CAUSE FASTENER FAILURE!**



 **CAUTION** 
**ALL INSTALLATION HOLES SHOULD BE SEALED
WITH SILICON OR BUTYL SEALANT TO PREVENT
EXHAUST FUMES FROM ENTERING THE VEHICLE!**



 **DANGER** 
**INSPECT FOR FUEL TANK, FUEL LINES, BRAKE LINES, HIGH
VOLTAGE BATTERIES AND ELECTRICAL LINES PRIOR TO
DRILLING TO AVOID DAMAGING CRITICAL VEHICLE SYSTEMS
OR INJURY TO INSTALLER DURING INSTALLATION PROCESS!**



 **CAUTION** 
**TO AVOID DAMAGING THE VEHICLE ALWAYS
USE DRILL STOPS WHEN DRILLING ANY IN-
STALLATION HOLES!**



- IMPORTANT WARRANTY REQUIREMENTS -

1. SUBSTITUTING ADRIAN STEEL SPECIFIED FASTENERS FOR ASSEMBLY AND/OR INSTALLATION WILL VOID YOUR PRODUCT WARRANTY.
2. ALL HOLES DRILLED INTO VEHICLE SHOULD HAVE THE RAW METAL EDGES SEALED WITH A SELF-ETCHING PRIMER TO RESIST CORROSION AND POTENTIAL FASTENER POINT FAILURE.
3. ALL FASTENERS USED IN THE INSTALLATION OF THIS PRODUCT SHOULD BE TIGHTENED TO THE TORQUE(S) SPECIFIED IN THESE INSTRUCTIONS.
4. THESE INSTRUCTIONS SHOULD BE KEPT WITH THE VEHICLE.

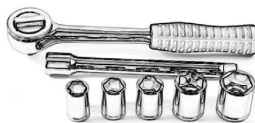
THE BASIC TOOLS NEEDED FOR MOST INSTALLATIONS



DRILL



DRILL BIT WITH
STOP



RATCHET, SOCKETS
AND/OR WRENCHES



SCREWDRIVERS



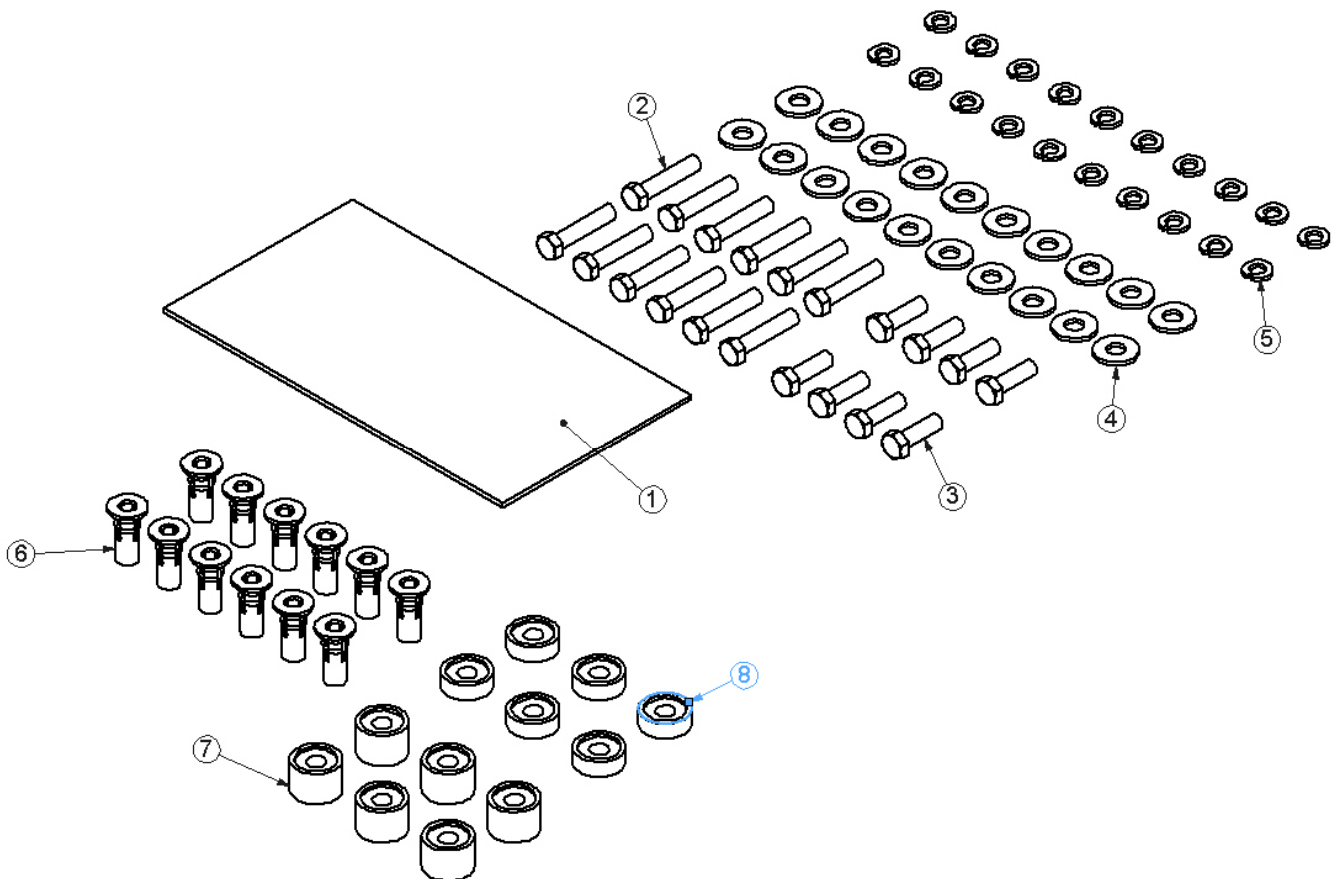
MEASURING TAPE

ADDITIONAL TOOLS MAY BE NEEDED FOR THIS INSTALLATION AND THEY WILL BE IDENTIFIED IN THE STEPS THAT FOLLOW.

Assembly/Installation Instructions and Owners Manual

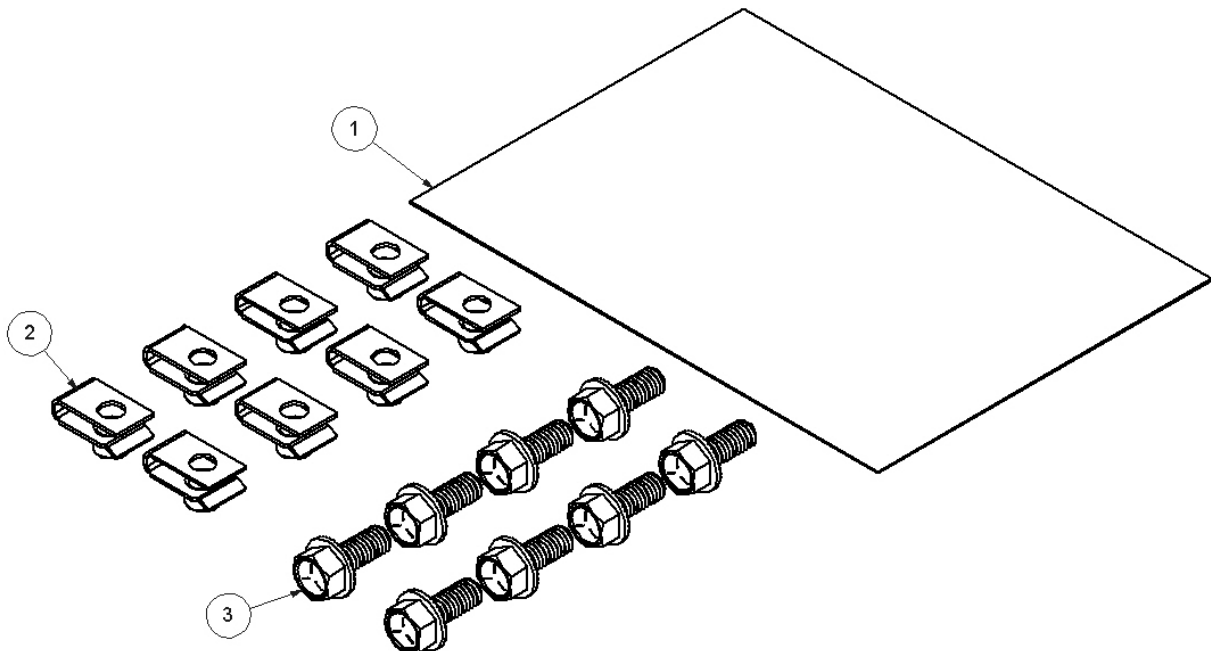
Installation and/or Assembly Fasteners BAG00012-0

ITEM NO.	PART NUMBER	DESCRIPTION	BAG00012-0/QTY.
1	BAG0509-A	5" X 9" 4MIL AUTOBAG	1
2	FAS0092	Screw, Hex Hd, 5/16-18x1.50 Zn Plate, G8	12
3	FAS0082	SCREW,HH 5/16-18X1 G8 ZNY	8
4	FAS0086	WASHER,FLAT USS 5/16 ZP	20
5	FAS0098	Washer, Lock, Split, 5/16, Zinc Plate	20
6	FAS0091	Plusnut, 5/16	12
7	03927-2	SPACER, FLR, 1010, 11/16 ZP	6
8	03927-1	SPACER, FLR, 1010, 11/32 ZP	6



Installation and/or Assembly Fasteners
BAG64491

ITEM NO.	PART NUMBER	DESCRIPTION	QTY.
1	BAG0507-A	5" x 7" 3MIL AUTOBAG	1
2	FAS0759	U-NUT, 5/16-18 ZP	8
3	FAS0438	SCREW, HFLNG 5/16-18X.75 ZP	8

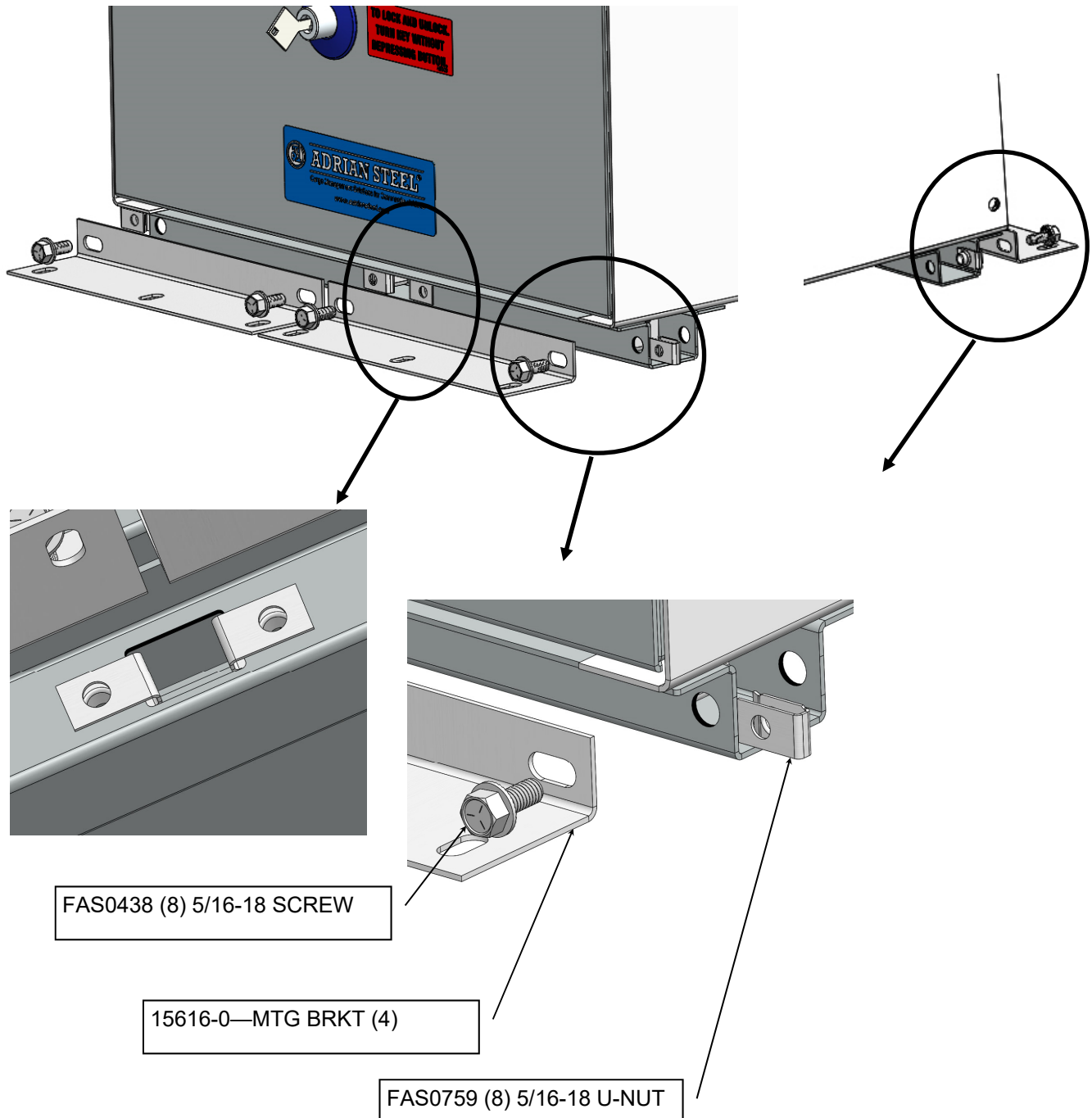


Instructions for Step 01

Add the drawer floor mounting brackets

BRACKET ORIENTATION

VIEW FROM TOP SIDE OUTSIDE CURBSIDE DOOR



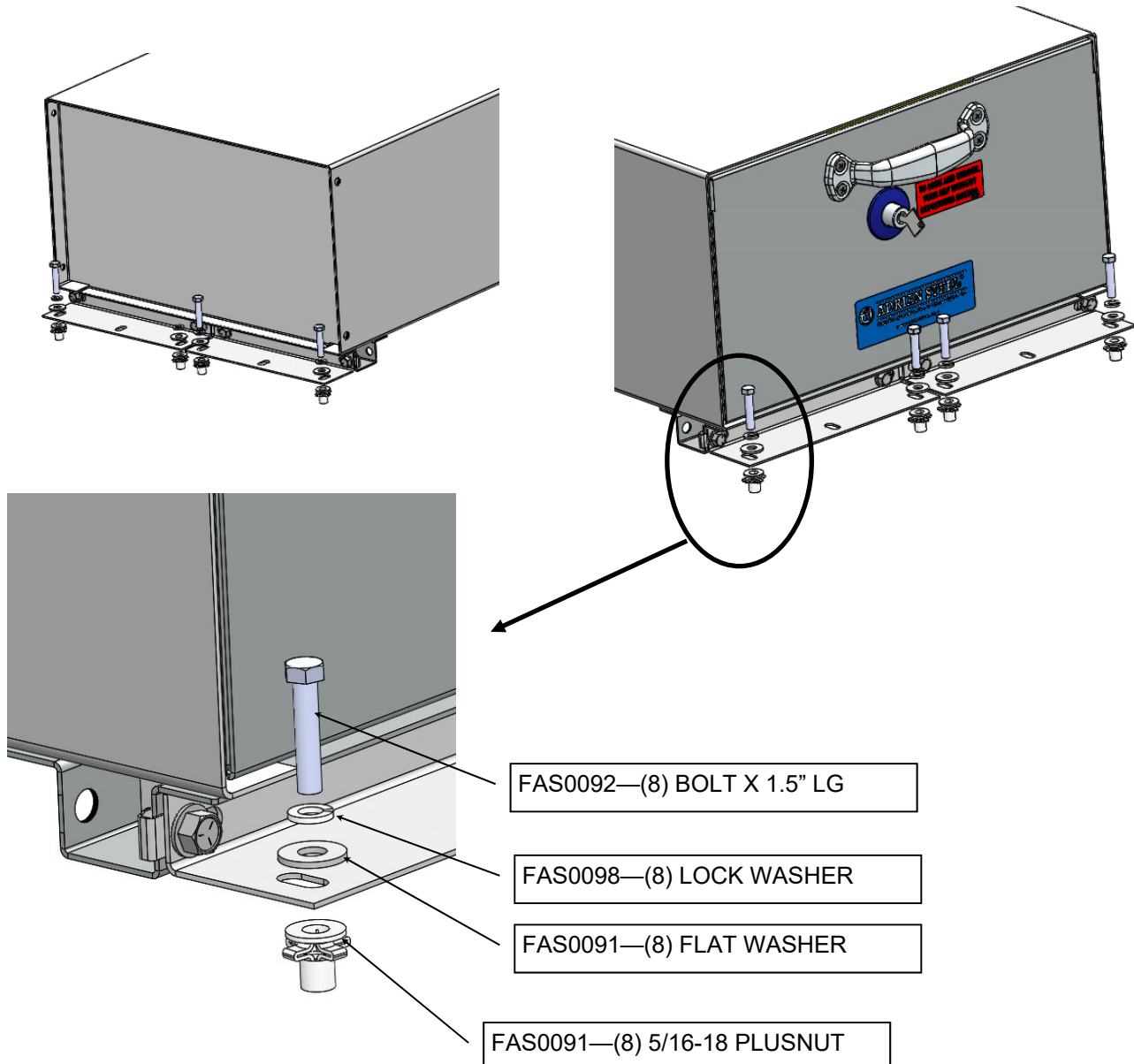
Instructions for Step 02

LOCATE AND SET PLUSNUTS

Place your Stow-all in desired position in vehicle (ref: PDS documentation). Mark the floor through slots in the Drawer Floor Mount Brackets in preparation for installing the 5/16-18UNC plusnuts. Remove Stow-all from vehicle and set aside at this time.

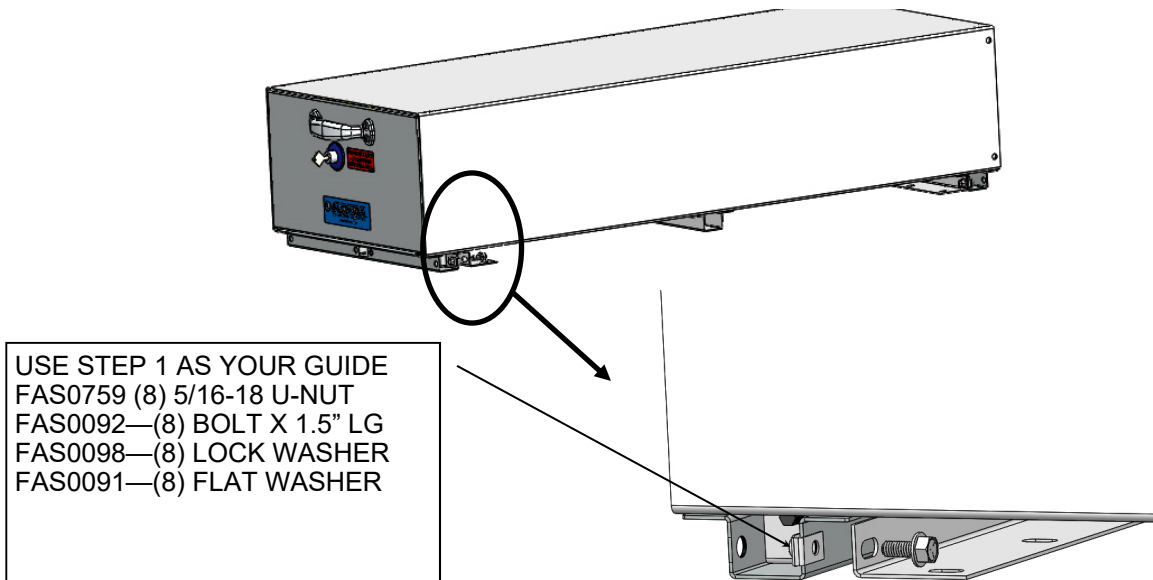
NOTE: Before drilling through holes for plusnut installation inspect for electrical wiring, gas tank location, and/or control lines. Use drill bit with a stop collar as outlined in first part of this instruction.

Once plusnuts have been installed, reposition Stow-all and align slots in the Drawer Floor Mount Brackets. Secure in place with the fasteners listed above and tighten to the recommended torque of **17 ft-lbs +/- 2 ft-lbs**.



Instructions for Step 03

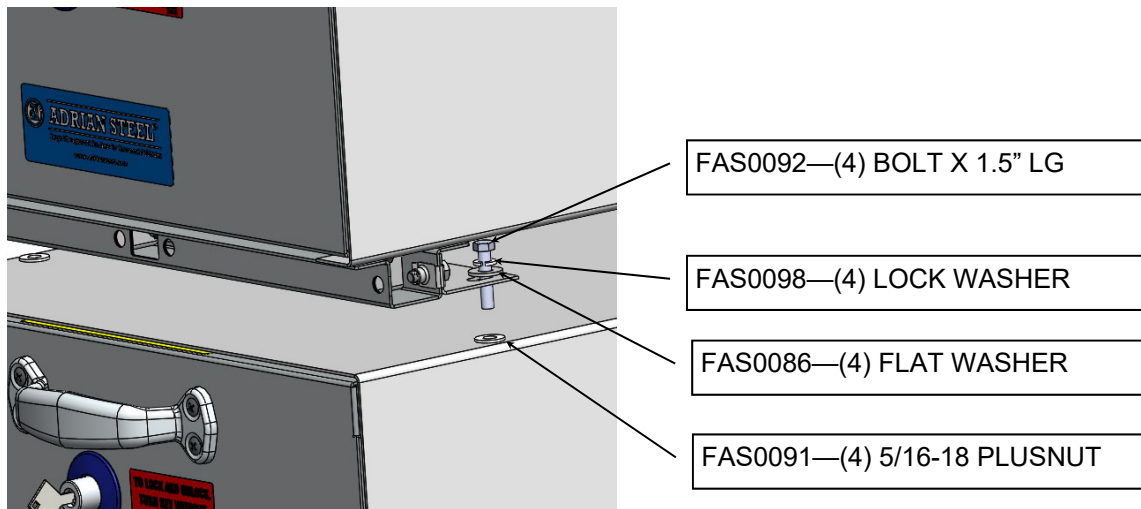
STACKED STOWALLS—ADD FLOOR MOUNTING BRACKETS USING STEP 1 AS YOUR GUIDE



Place your Upper Stow-all on top of the previously installed Stow-all as shown in detail views below. Mark the (4) outer corner floor through slots in the Drawer Floor Mount Brackets in preparation for installing the 5/16-18UNC plusnuts into the lower Stow-all. Remove the upper Stow-all from vehicle and set aside at this time.

NOTE: After drilling through the outer wrapper of the lower Stowall, continue drilling through the inner Rail Channels spot welded to the upper interior surface of the lower Stow-all wrapper. This will allow clearance for the plusnut body required for proper seating of the plusnuts.

Once plusnuts have been installed in the lower Stow-all, reposition upper Stow-all and align slots in the Drawer Floor Mount Brackets. Secure in place with the fasteners listed above and tighten to the recommended torque of **17 ft-lbs +/- 2 ft-lbs**.



ATTENTION!

It is advised that “all fasteners” that assemble and install your Stow-all is “checked for tightness” at (2) weeks operation and then rechecked again at (6) weeks of operation.

Assembly fasteners could loosen due to vibration through your vehicle while on the road or in and out of construction sites.

This is a preventative maintenance step to ensure your Stow-all give you a long service life.



ATTENTION INSTALLERS! Any seat belt components including not limited to buckles and retractors that are removed during installation must be reconnected (electrically) and secured in the vehicle upon completion. Failure to do so will result in warning lamps and possible disablement of the air bag system.



***DOUBLE-CHECK ALL FASTENER LOCATIONS TO BE
SURE THAT ALL FASTENERS ARE TIGHTENED TO
SPECIFICATIONS!***



**YOUR INSTALLATION IS NOW COMPLETE! STOW THIS COPY
IN THE VEHICLE FOR FUTURE REFERENCE!**

NOTE!

**For Stow-all Drawer units that Will Not Open
See the next two sections for Field Fix Options**

STOW-ALL DIVIDER WILL NOT OPEN FIELD FIX OPTION #1

“PUSH-BUTTON CAM (29146-0) TO LATCH BOLT ASM LEVER ARM (34102-0) HDW RE-ALIGNMENT”

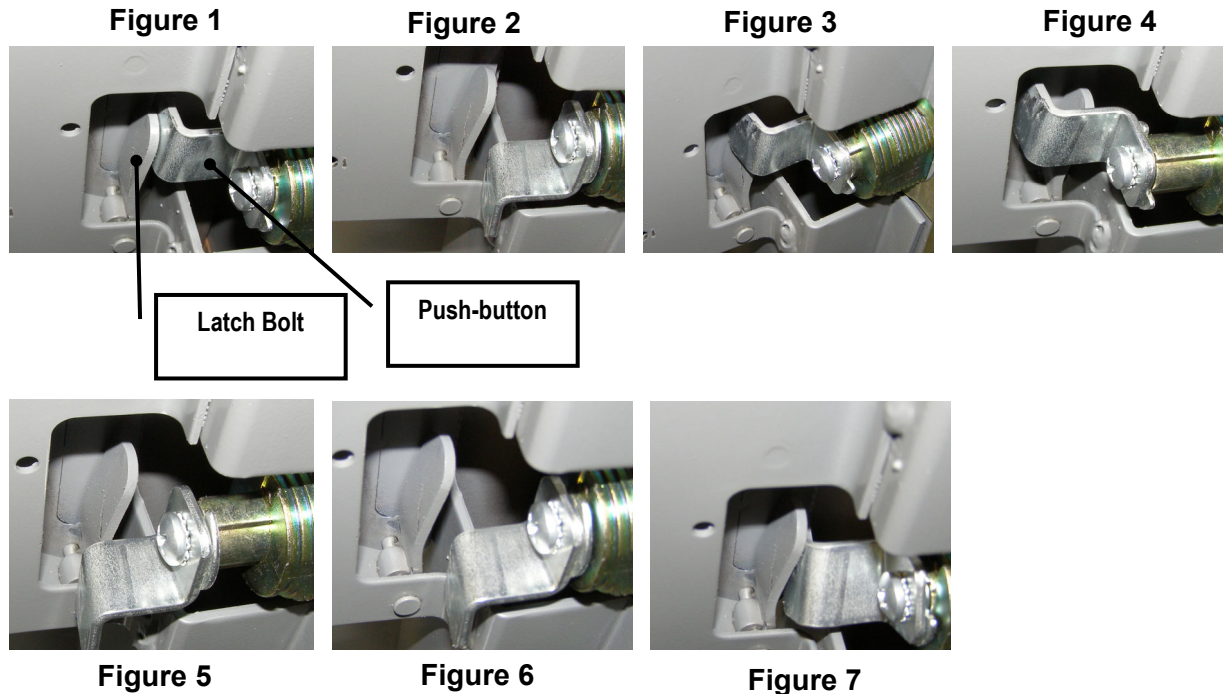


Figure 1

Nominal push-button cam to latch bolt assembly lever arm configuration for proper opening and closing of your stow-all.

Figure 2

Shows the push-button cam in the normal “drawer locked position”.

Figure 3

Shows misalignment of hardware, stow-all drawer will not open when pushbutton is depressed.

Figure 4

Realignment begins by inserting the key into the push-button and fully depressing the push-button mechanism.

Figure 5

While push-button is fully depressed, rotate key 90 deg. Clockwise.

Figure 6

Remove force holding the push-button fully depressed and allow to return to normal position.

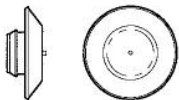
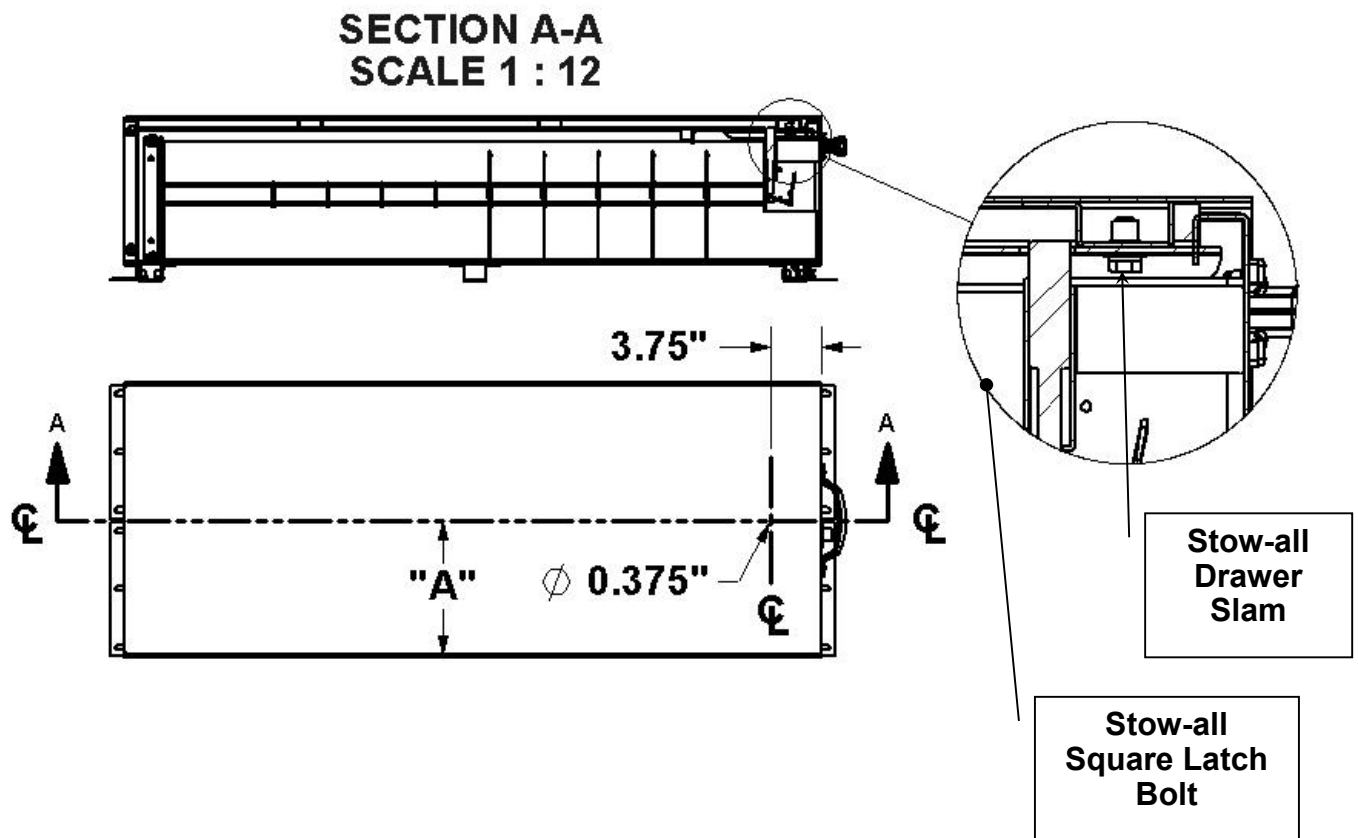
Figure 7

Rotate key 90 deg. Counter-Clockwise. This should allow the push-button cam to engage behind the latch bolt asm lever arm. When key is returned to the original starting position, the push-button latch cam and latch bolt lever arm should be as shown in *Figure 1*. Normal stow-all drawer operation should be possible at this time. If not, repeat procedure one more time. If after the second attempt fails, proceed to next section (Field Fix Option #2).

STOW-ALL DIVIDER WILL NOT OPEN FILED FIX OPTION #2

“Manual depressing the Latch Bolt through access hole in stow-all outer housing” (similar to 29529-0)

Measure (2) centerlines on top of your Stowall per dimensions shown below and mark centerline crossing point with a permanent marker. Drill a 0.375" diameter hole through the top surface of the stow-all outer housing.



CAP PLUG (21407-0)

DIMENSION "A"
SA-10 / SAJ-10 = 5"
SA-20 / SAJ-20 = 10"
SA-30 / SAJ-30 = 14.812"