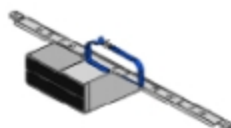


**ADRIAN STEEL**

Cargo Management Solutions for Commercial Vehicles

LONG PARTS STORAGE, PARTITION PANEL KIT*PRODUCT WEIGHT***75.37***WIDTH x DEPTH x HEIGHT***62 x 3 x 51***CAPACITY***10' CONDUIT, PIPE,
ETC.***COLOR***GRAY***CATALOG NUMBER***S1M1C1FLP***PRODUCT FEATURES*

PARTITION PANEL KIT DESIGNED TO PROVIDE A MEANS FOR SAFELY CARRYING 10' CONDUIT, PIPE, ETC. STRAPS ARE PROVIDED AT THE FRONT AND REAR TO SECURE THE LOAD. A TRAY POSITIONED AT THE REAR DOORS CONTAINS THE MATERIAL AND PROTECTS THE REAR VEHICLE DOORS.

PRODUCT APPLICATION

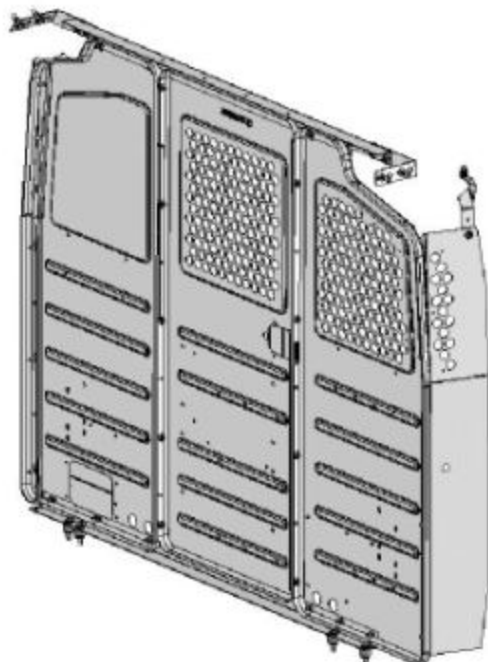
THIS PRODUCT IS DESIGNED TO BE USED IN FULL SIZE VANS UTILIZING THE RAIL MOUNTING KITS.



ADRIAN STEEL®

Cargo Management Solutions for Commercial Vehicles

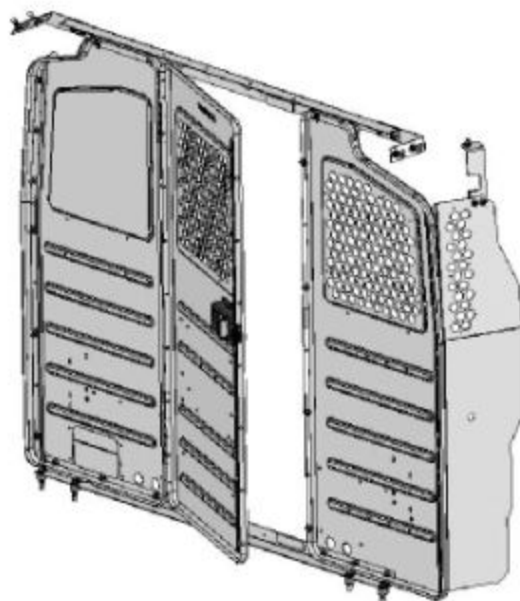
Partition Panel & Wing Kit Assembly/Installation



SMC Fixed Center Panel Partitions

S1M1C1FSV
S1M2C1FSV
S1M2C2FSV
S2M2C2FSV

Note:
S1M2C2FSV + WKC2FSVGM



SMC Hinged Center Panel Partitions

S1M1HC1FSV
S1M2HC1FSV
S1M2HC2FSV
S2M2HC2FSV



FOR DIRECTION ON ASSEMBLY
OF THE HINGED DOOR OPTION
REFER TO THE "PDK1" ASSEMBLY
INSTRUCTIONS (ref: **36545-0**)
FOR SPECIFIC STEPS

Note:
S1M2HC2FSV + WKC2FSVFD

S-M-C Style Partition Fixed Center & Hinged Center Panels

- PRECAUTIONS -


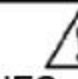


 **CAUTION** 
**THE USE AIR IMPACT TOOLS CAN
OVER-TORQUE FASTENERS AND
CAUSE FASTENER FAILURE!**





 **CAUTION** 
**ALL INSTALLATION HOLES SHOULD BE SEALED
WITH SILICON OR BUTYL SEALANT TO PREVENT
EXHAUST FUMES FROM ENTERING THE VEHICLE!**



 **DANGER** 
**INSPECT FOR FUEL TANK, FUEL LINES, BRAKE LINES, HIGH
VOLTAGE BATTERIES AND ELECTRICAL LINES PRIOR TO
DRILLING TO AVOID DAMAGING CRITICAL VEHICLE SYSTEMS
OR INJURY TO INSTALLER DURING INSTALLATION PROCESS!**



 **CAUTION** 
**TO AVOID DAMAGING THE VEHICLE ALWAYS
USE DRILL STOPS WHEN DRILLING ANY IN-
STALLATION HOLES!**



- IMPORTANT WARRANTY REQUIREMENTS -

1. **SUBSTITUTING ADRIAN STEEL SPECIFIED FASTENERS FOR ASSEMBLY AND/OR INSTALLATION WILL VOID YOUR PRODUCT WARRANTY.**
2. **ALL HOLES DRILLED INTO VEHICLE SHOULD HAVE THE RAW METAL EDGES SEALED WITH A SELF-ETCHING PRIMER TO RESIST CORROSION AND POTENTIAL FASTENER POINT FAILURE.**
3. **ALL FASTENERS USED IN THE INSTALLATION OF THIS PRODUCT SHOULD BE TIGHTENED TO THE TORQUE(S) SPECIFIED IN THESE INSTRUCTIONS.**
4. **THESE INSTRUCTIONS SHOULD BE KEPT WITH THE VEHICLE.**

THE BASIC TOOLS NEEDED FOR MOST INSTALLATIONS



DRILL



DRILL BIT WITH
STOP



RATCHET, SOCKETS
AND/OR WRENCHES



SCREWDRIVERS





MEASURING TAPE

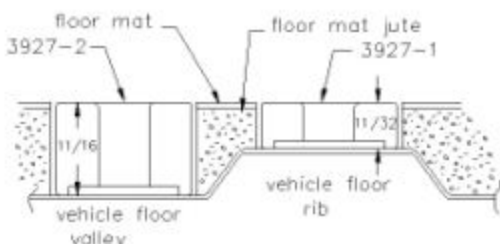
ADDITIONAL TOOLS MAY BE NEEDED FOR THIS INSTALLATION AND THEY WILL BE IDENTIFIED IN THE STEPS THAT FOLLOW.

S-M-C Partition Assembly/Installation Instructions



WHEN INSTALLING PLUSNUTS MAKE SURE YOU USE THE CORRECT DRILL BIT WITH A STOP!

PLUSNUT SIZE	DRILL BIT SIZE
1/4-20 PLUSNUT, FAS0052	USE A 3/8" DIAMETER DRILL BIT WITH A STOP.
5/16-18 PLUSNUT, FAS0091	USE A 1/2" DIAMETER DRILL BIT WITH A STOP.
 <p>NOTE: A PLUSNUT SETTING TOOL IS REQUIRED FOR PLUSNUT INSTALLATION AND IS NOT SUPPLIED WITH THIS KIT. ORDER PLUSNUT TOOLS FROM ADRIAN STEEL (P.N. 22200-0) OR USE AN AIR POWERED PLUSNUT SETTING GUN.</p>	
<p>NOTE: If your vehicle contains carpet or a rubber floor mat you will need to prepare the mounting locations using a 1-3/16" carpet cutter.</p>	<p>1-3/16" DIAMETER CARPET CUTTER P.N. 31183-0.</p> 

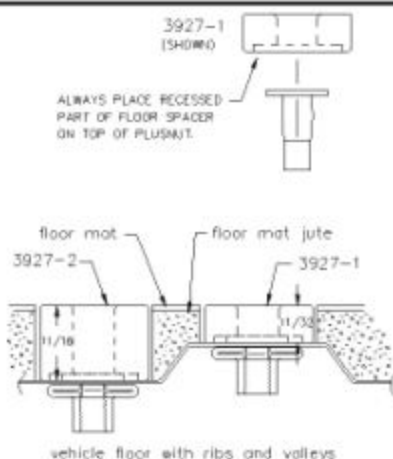


Step 01 Optional

If your vehicle contains carpet or a rubber floor mat you will need to prepare the mounting locations. (if not, skip to STEP 02)

Position the product to be installed into the vehicle and once you are satisfied with the mounting locations, mark the mounting locations. Using a 1-3/16" diameter carpet cutter. Select the appropriate floor spacers as shown in the illustration to the left. Set those aside for use later into the installation process.

Once you have prepared the carpet/floor mat for

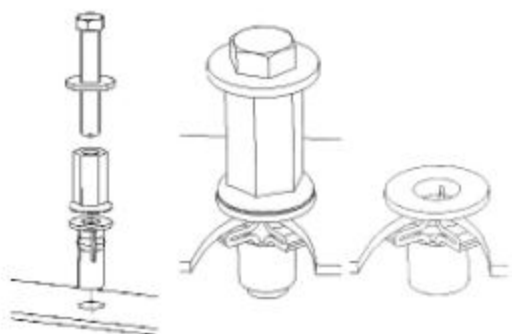


Step 02 Prepare Mounting Locations

Using a drill and drill bit (see table at top of page for correct size) drill the mounting holes in the vehicle sheet metal to prepare for installing the plusnuts.

If you are thru-bolting at any of the locations simply drill a hole that is 1/16" larger than the bolt size(s) for those locations.

Once you have drilled the holes into the vehicle, the raw metal edges should be sealed using a self-etching primer to resist corrosion and potential fastener point failure.



Step 03 Setting Plusnuts

Use a Air Powered Plusnut Setting Gun to "set the plusnut" or if installing manually with hand tools, assemble the following:

- 1/4-20UNC Plusnut (FAS0052)
- FAS0080 SCREW, HXHD, 1/4-20UNCx2.00, G8
- FAS0067 WASHER, FLAT, 1/4"ID
- 22200-0 PLUSNUT TOOL
- 5/16-18UNC Plusnut (FAS0091)
- FAS0095 SCREW, HXHD, 5/16-18UNCx2.00", G8
- FAS0086 WASHER, FLAT, 5/16"ID
- 22200-0 PLUSNUT TOOL

Place barrel of the plusnut body in sheet metal thru hole until flange is flush with sheet metal.

Using a 9/16" combination wrench of plusnut tool body and a second hand wrench, ratchet, or air tool, rotate the hex bolt head CW to draw plus nut flanges up (set the plusnut).

Remove hex bolt, washer, and plusnut. Inspect installation.

S-M-C Partition Assembly/Installation Instructions

"S-M-C Partition / Wing Kit Fastener Contents Page"



Screw, THP,
1/4-20 x 3/4"
FAS0062



Nut, HxFing,
1/4-20UNC
FAS0055



Screw, HxHd,
1/4-20 x 1"
FAS0078



Screw, HxFing,
1/4-20 x 3/4"
FAS0054



Washer, SpltLk,
1/4" ID
FAS0060



Washer, Flat,
1/4" ID
FAS0067



Plusnut,
1/4-20UNC
FAS0052



Screw, HxHd,
5/16-18 x 1"
FAS0082



Screw, HxHd,
5/16-18 x 2"
FAS0095



Washer, SpltLk,
5/16" ID
FAS0098



Washer, Flat,
5/16" ID
FAS0086



Plusnut,
5/16-18UNC
FAS0091



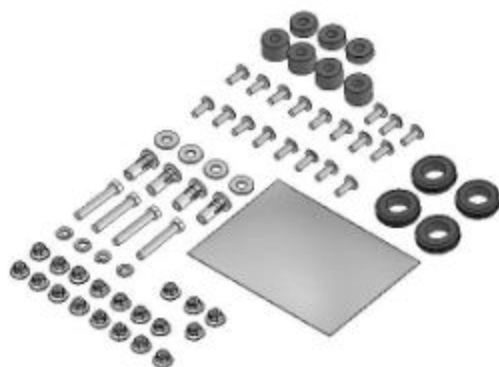
Spacer, Floor,
11/32" Ht
03927-1



Spacer, Floor,
11/16" Ht
03927-2



Grommet,
Rubber, 1" ID
36096-0

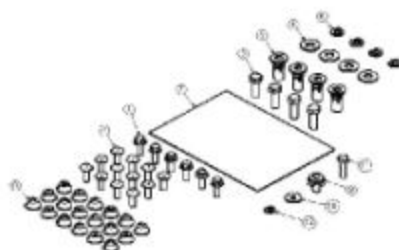


BAG37177 "BAG, FAS, FSV PNL KIT"

Part Number	Part Description	Qty
BAG0509-A	5"X9" 4MIL AUTOBAG	1
FAS0055	NUT,HX FLNG NYLCK 1/4-20	19
FAS0062	SCREW,THP 1/4-20X.75 P/G5	19
FAS0086	WASHER,FLAT 5/16	4
FAS0091	PLUSNUT,5/16-18 PB DC	4
FAS0095	SCREW,HH 5/16-18X2 ZN G8	4
FAS0098	WASHER,LOCK,SPLIT 5/16	4
03927-1	SPACER,C/F 1006,11/32,FLR	3
03927-2	SPACER,C/F 1006,11/16,FLR	4
36096-0	GROMMET,RUBBER,1"ID	4

BAG37178 "BAG, FAS, WING KIT, FSV"

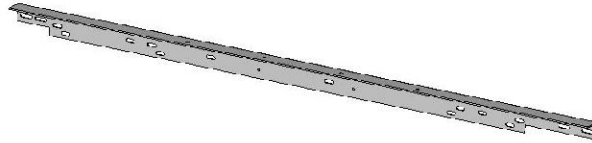
Part Number	Part Description	Qty
BAG0507-A	5" X 7" 3 MIL AUTOBAG	1
FAS0054	SCRW,SERT HX FLNG 1/4-20	6
FAS0055	NUT,HX FLNG NYLCK 1/4-20	18
FAS0062	SCREW,THP 1/4-20X.75 P/G5	12
FAS0082	SCREW,HH 5/16-18X1ZNYELG8	4
FAS0086	WASHER,FLAT 5/16	4
FAS0091	PLUSNUT,5/16-18 PB DC	4
FAS0098	WASHER,LOCK,SPLIT 5/16	4
FAS0078	SCREW, HH 1/4-20 X1 SZ G8	1
FAS0067	WASHER, FLAT 1/4	1
FAS0060	WASHER, LOCK, SPLIT 1/4	1
FAS0052	PLUSNUT, 1/4-20 PB DC	1



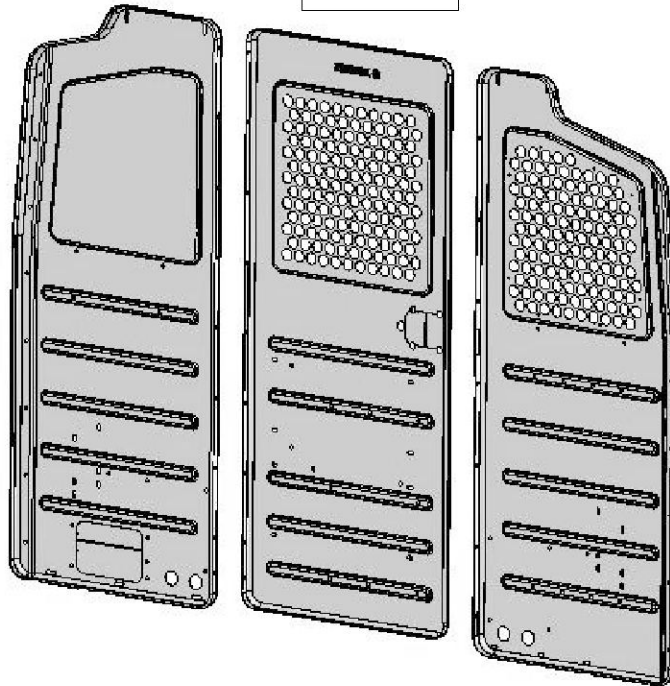
S-M-C Partition Assembly/Installation Instructions

"S-M-C Partition Component Contents Page"

Rail, Header,
SMC Partition
36987-G



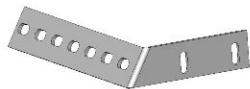
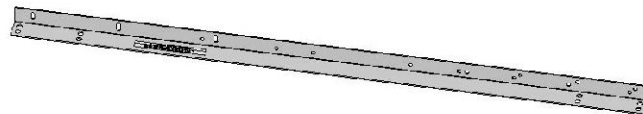
M1/M2 Panels
36984-G
36985-G



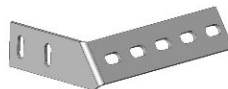
S1/S2 Panels
36908-G
36981-G

C1/C2 Panels
36982-G
36983-G

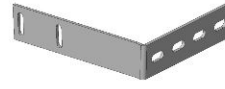
Rail, Footer,
SMC Partition
36986-G



Partition, Header,
Bracket, GM FSV
Curb Side (Passenger)
33545-0



Partition, Header,
Bracket, GM FSV
Street Side (Driver)
33543-0



Partition, Header,
Bracket, Ford FSV
Curb Side (Passenger)
33546-0



Partition, Header,
Bracket, Ford FSV
Street Side (Driver)
33544-0



Bracket, Wing Panel, Mtg
GM FSV Curb Side (Passenger)
32662-0



Trim, Pinch Weld, 49" Lg
32398-0



Bracket, Wing Panel, Mtg
Ford FSV Curb Side (Passenger)
32663-0

S-M-C Partition Assembly/Installation Instructions

"S-M-C Partition Wing Kit Component Contents Page"

Wing kits are available in Standard, -2" & +3" Setback Locations.
Be sure you have the correct kit for your installation

WING KITS FOR -2" SETBACK POSITION:

WKC1FSVF-2

WING KITS FOR STANDARD POSITION:

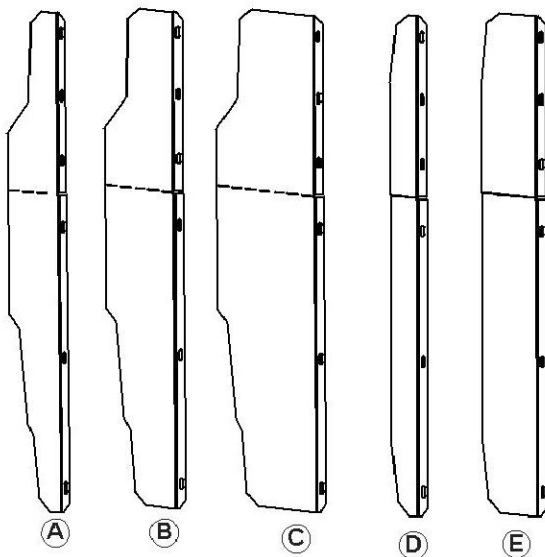
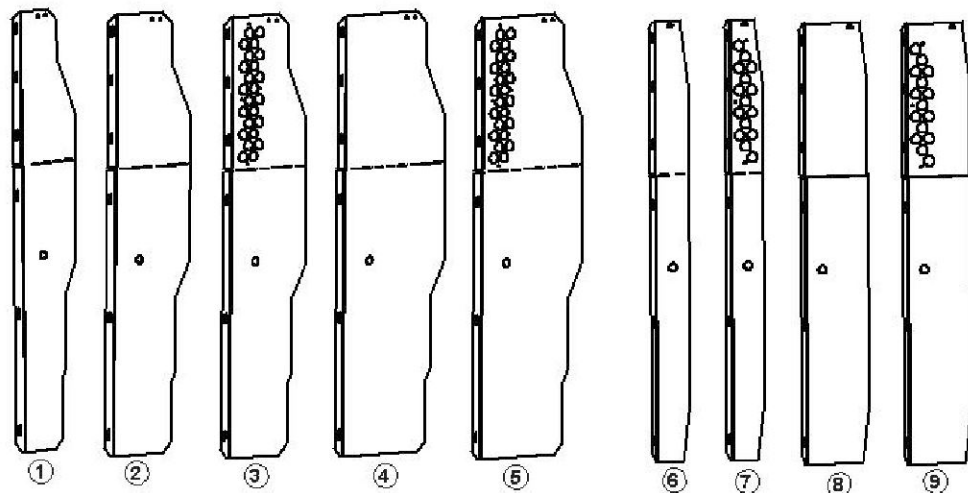
WKC1FSVFD & WKC2FSVFD

WKC1FSVGM & WKC2FSVGM

WING KITS FOR +3" SETBACK POSITION:

WKC1FSVFD3 & WKC2FSVFD3

WKC1FSVGM3 & WKC2FSVGM3



S-M-C Partition Curb Side Wing Panels

Item No:	Part Number	Part Description
1	37245-G	WING, CS, SOLID, FORD -2
2	37100-G	WING, CS, SOLID, FORD STD
3	37102-G	WING, CS, PERF, FORD STD
4	37103-G	WING, CS, SOLID, FORD +3
5	37105-G	WING, CS, PERF, FORD +3
6	37106-G	WING, CS, SOLID, GM STD
7	37108-G	WING, CS, PERF, GM STD
8	37109-G	WING, CS, SOLID, GM +3
9	37111-G	WING, CS, PERF, GM +3

S-M-C Partition Street Side Wing Panels

Item No:	Part Number	Part Description
A	37246-G	WING, SS, SOLID, FORD -2
B	37101-G	WING, SS, SOLID, FORD STD
C	37104-G	WING, SS, SOLID, FORD +3
D	37107-G	WING, SS, SOLID, GM STD
E	37110-G	WING, SS, SOLID, GM +3

Instructions Step 04 "S-M-C Panels, Header & Footer Rails"

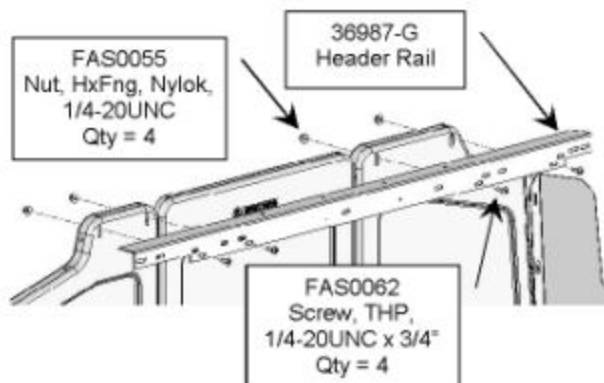
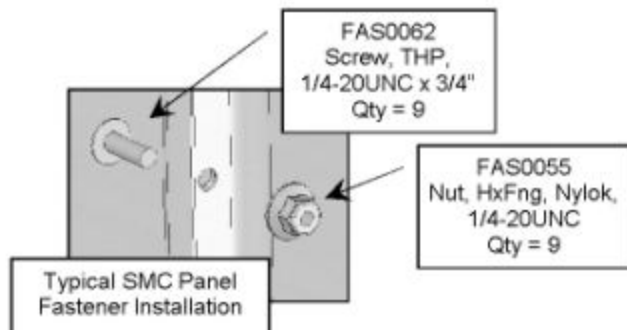
S-M-C Panel Assembly



Assemble the "S" and "C" panels to the "M" panel as shown at left. "S" to "M" panel (9) places indicated by bold arrows

Tighten all fasteners to Recommended torque specification 8 ft-lbs (+/- 2 ft-lbs)

Install (4) Grommets (36096-0) in both bottom thru holes in the "S" & "C" partition panels

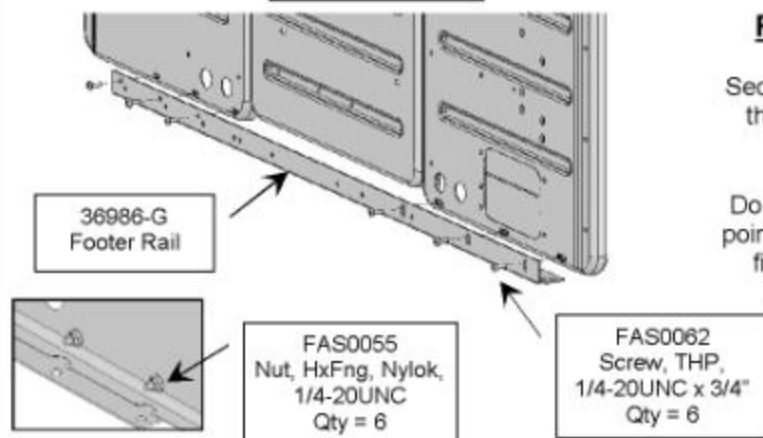


Header Rail To SMC Pnl's

Secure the Header Rail (36987-G) to the SMC panels as shown at left

IMPORTANT

Do not fully tighten fasteners at this point! These will be tightened during final installation in your vehicle.



Footer Rail to SMC Pnl's

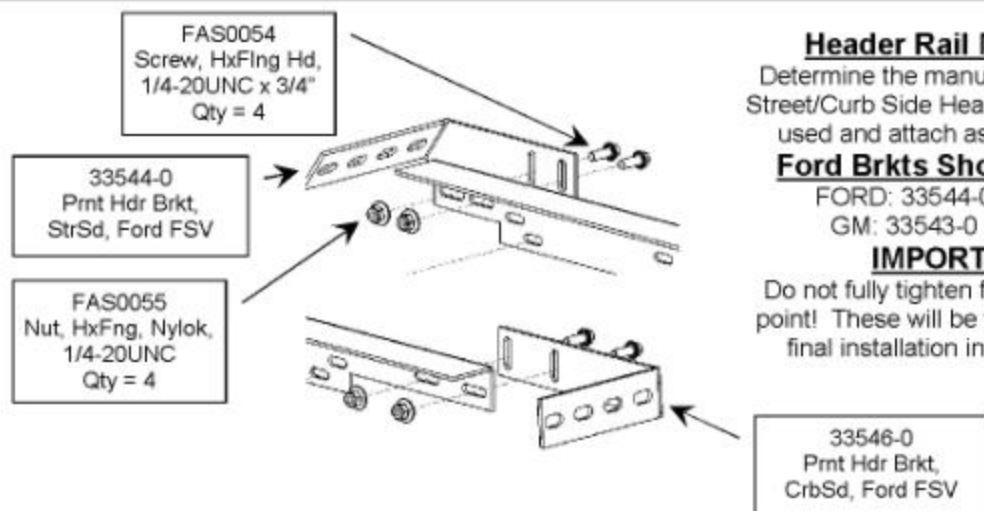
Secure the Footer Rail (36986-G) to the SMC panels as shown at left

IMPORTANT

Do not fully tighten fasteners at this point! These will be tightened during final installation in your vehicle.

S-M-C Partition Assembly/Installation Instructions

Instructions Step 05 "S-M-C Header Rail Mounting Brackets"



Header Rail Mtg Brkts

Determine the manufacturer specific Street/Curb Side Header Bracket to be used and attach as shown at left.

Ford Brkts Shown in view

FORD: 33544-0 / 33546-0

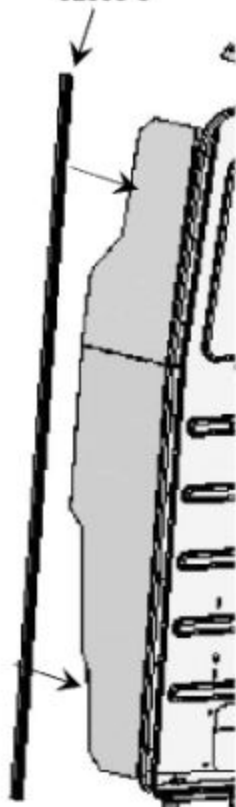
GM: 33543-0 / 33545-0

IMPORTANT

Do not fully tighten fasteners at this point! These will be tightened during final installation in your vehicle.

Instructions Step 06 "S-M-C Prtn Street/Curb Side Wing Panels"

Trim, Pinchweld, 49"
32398-0



Ford WKC2FSV panels shown in views

ATTACH CURBSIDE (PASSENGER) PARTITION WING PANEL

Use (6) fasteners

FAS0062 "Screw, THP, 1/4-20x3/4"

FAS0055 "Nut, HxFing, 1/4-20UNC"

ATTACH STREETSIDE (DRIVER) PARTITION WING PANEL

Use (6) fasteners (each side)

FAS0062 "Screw, THP, 1/4-20x3/4"

FAS0055 "Nut, HxFing, 1/4-20UNC"

NOTE:

Install fasteners from the CAB Side thru the wing pnl slots, thru the partition pnl thru holes, then hex nut.

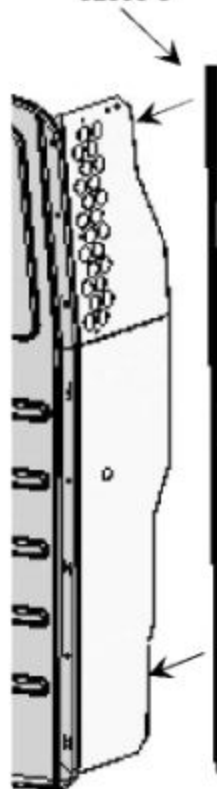
NOTE:

Hand bending of the wing panels will be required to properly align partition/wing panel fastener slots and thru holes.

NOTE:

Apply trim pinchweld trim along the full contour prior to attaching wing panel to partition panel.

Trim, Pinchweld, 49"
32398-0



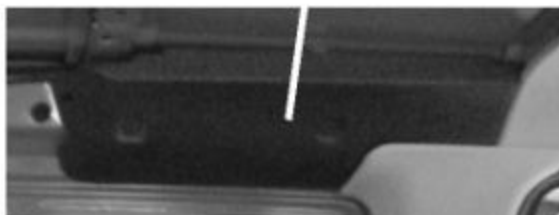
Instructions Step 07 "OEM Head Impact Foam Insert Modifications"

NOTE:

This section applies to the **Ford FSV** only.

The GM vehicles come equipped with hard plastic extensions that are to be removed and discarded.

If you are installing the partition on a GM van, proceed to STEP 08, page 11 after you remove the hard plastic extensions and discard.



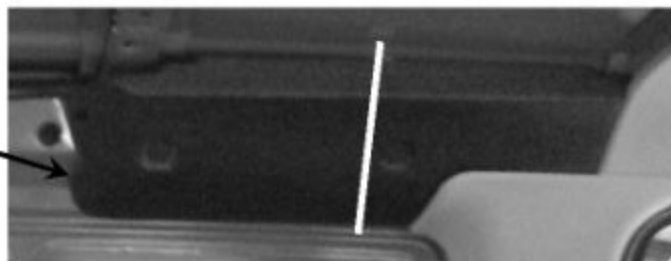
The upper left image shown above is the street side Ford full size van OEM Head Impact Foam Insert for both the street and curb side for all vans equipped with the 60-40 cargo doors.

The Ford FSV equipped with a sliding cargo door has the same street side foam insert for the drivers side, but the curb side is equipped with a plastic panel covering the sliding door track mechanism.

Remove the plastic retainer "plugs" securing the OEM foam insert to the chassis.

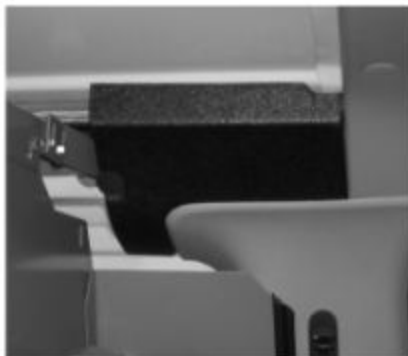
Gently remove the foam insert and place on a clean, flat workbench surface.

Cut foam insert where indicated by the "white line" discard remaining portion. Replace modified insert in vehicle.



Images shown below are a completed Ford FSV with 60-40 cargo doors.

Street (Drivers) Side



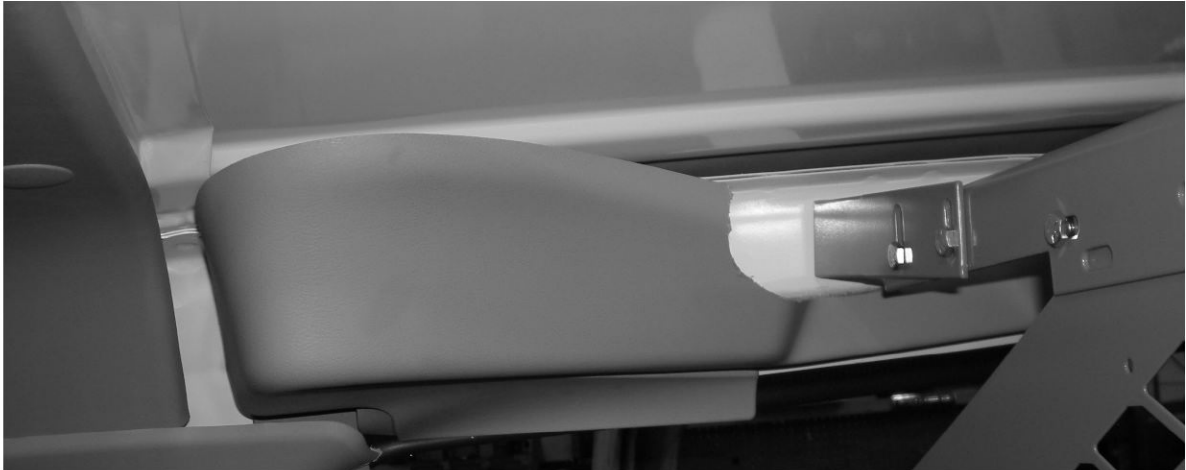
Curb (Passenger) Side



Instructions Step 07 “continued”

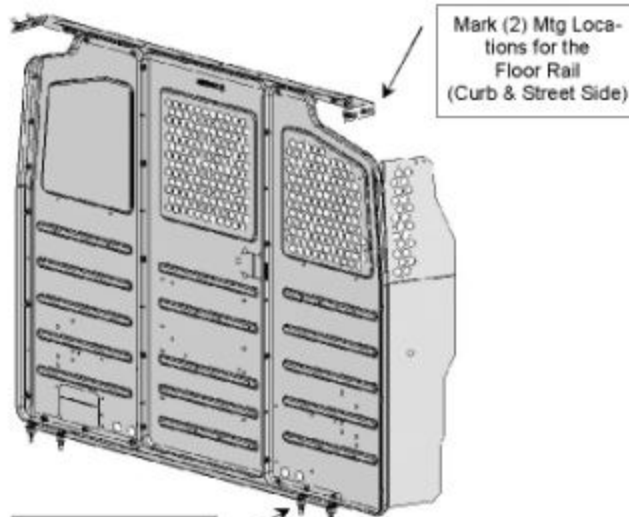
NOTE:

This section applies to the Ford FSV curb (passenger) side sliding door OEM plastic trim panel.



Start a horizontal cut in the trim panel here, this notch is a pre-existing OEM panel feature for the “coat hook”.
Cut along panel as shown in the images above.
After cutting panel, remove any burrs and replace panel in vehicle.

Instructions Step 08



SMC Prtn Mtg Hole Location

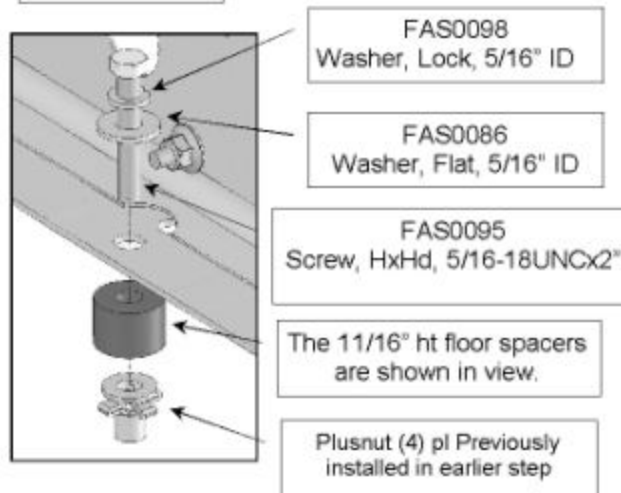
Plusnut Installation

Before any drilling is done to the vehicle, cover any openings in the B-Pillar with masking tape, this is to prevent shavings reaching the seat belt.

Carefully load partition into vehicle by angling the top of the partition back toward the rear of the vehicle while sliding it in through the Curb Side cargo doors.

Position the partition into the vehicle with the wing panels contacting against the "B-Pillars" of the chassis. Check to ensure that the partition is plumb vertically and mark the location of the four chassis floor pan mounting locations and the four chassis partition header rail mounting locations.

After marking all eight locations for your partition installation, carefully rotate and move the partition rearward along the street side chassis wall. Drill the proper mounting holes and set the plusnuts as directed at start of these instructions. Remove tape after drilling is completed.

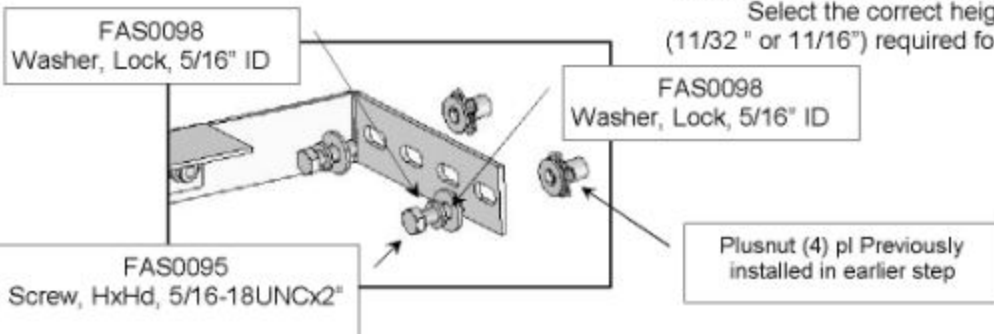


SMC Prtn Installation

Stand the partition upright and align the holes in the floor rail with the previously installed plusnuts. Then tilt the partition forward (or backward) to align the street and curb wing panels to the vehicle B-pillars. Insert the fasteners through the floor rail at all four locations as shown and tighten to a torque specification of (24 ft-lbs +/- 3 ft-lbs)

Note:

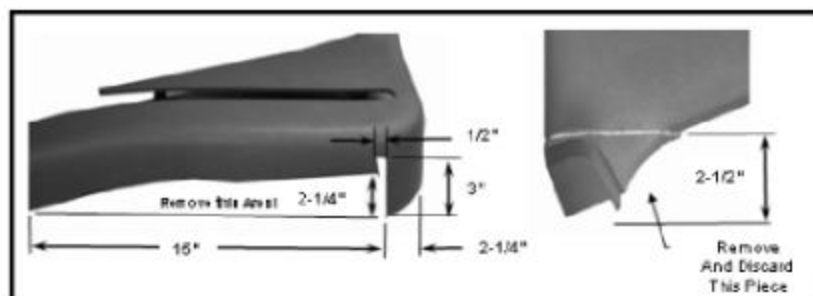
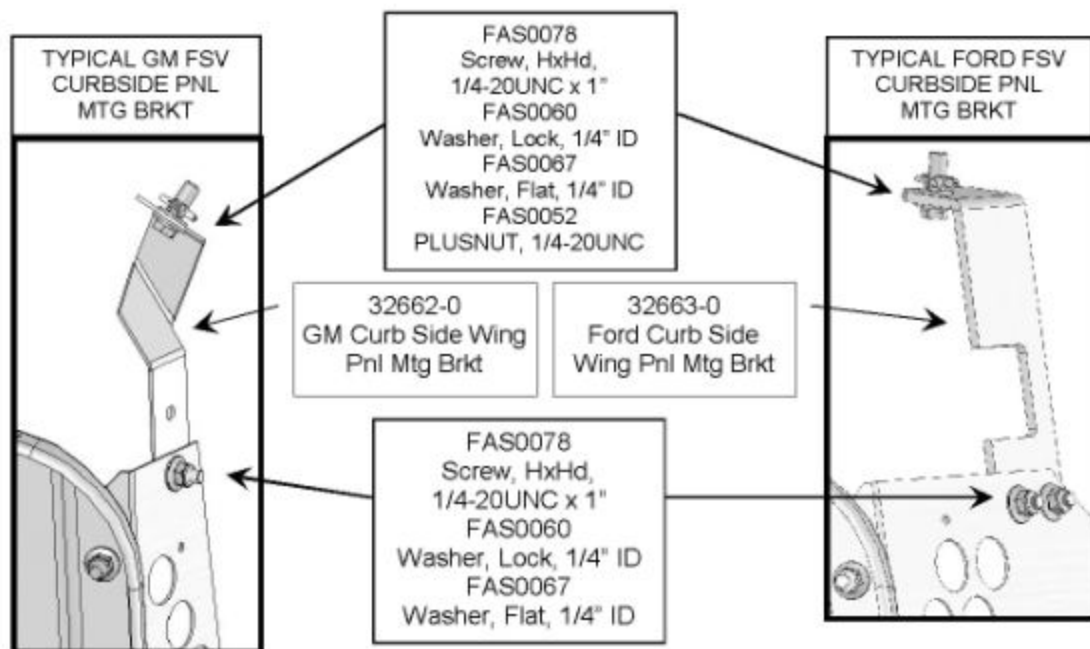
The 11/16" ht floor spacers are shown in view. Select the correct height spacer (11/32" or 11/16") required for your installation



Instructions Step 09 "S-M-C"

Curbside Pnl Mtg Brkt

Attach the wing bracket to the curb side wing panel, with the wing firmly positioned against the B-pillar, mark the hole location on the underside of the vehicle header structure. Move the bracket aside and drill a 3/8" diameter hole for the 1/4-20UNC plusnut. Install plusnut and reposition the wing bracket and wing against the B-pillar. Fully tighten all fasteners to torque specification of 8 ft-lbs (+/- 2 ft-lbs)



Curbside Pnl Mtg Brkt

For GM vehicles with SLIDING Side Cargo Door you will need to remove the door track fascia trim panel and modify (trim) it as shown in left side detail view. If you do not have a sliding side cargo door, skip this step.

DOUBLE-CHECK ALL FASTENER LOCATIONS TO BE SURE THAT ALL FASTENERS ARE TIGHTENED TO SPECIFICATIONS!
YOUR INSTALLATION IS NOW COMPLETE!
STOW THIS COPY IN THE VEHICLE FOR FUTURE REFERENCE!

Instructions Step 10 "S-M-C"

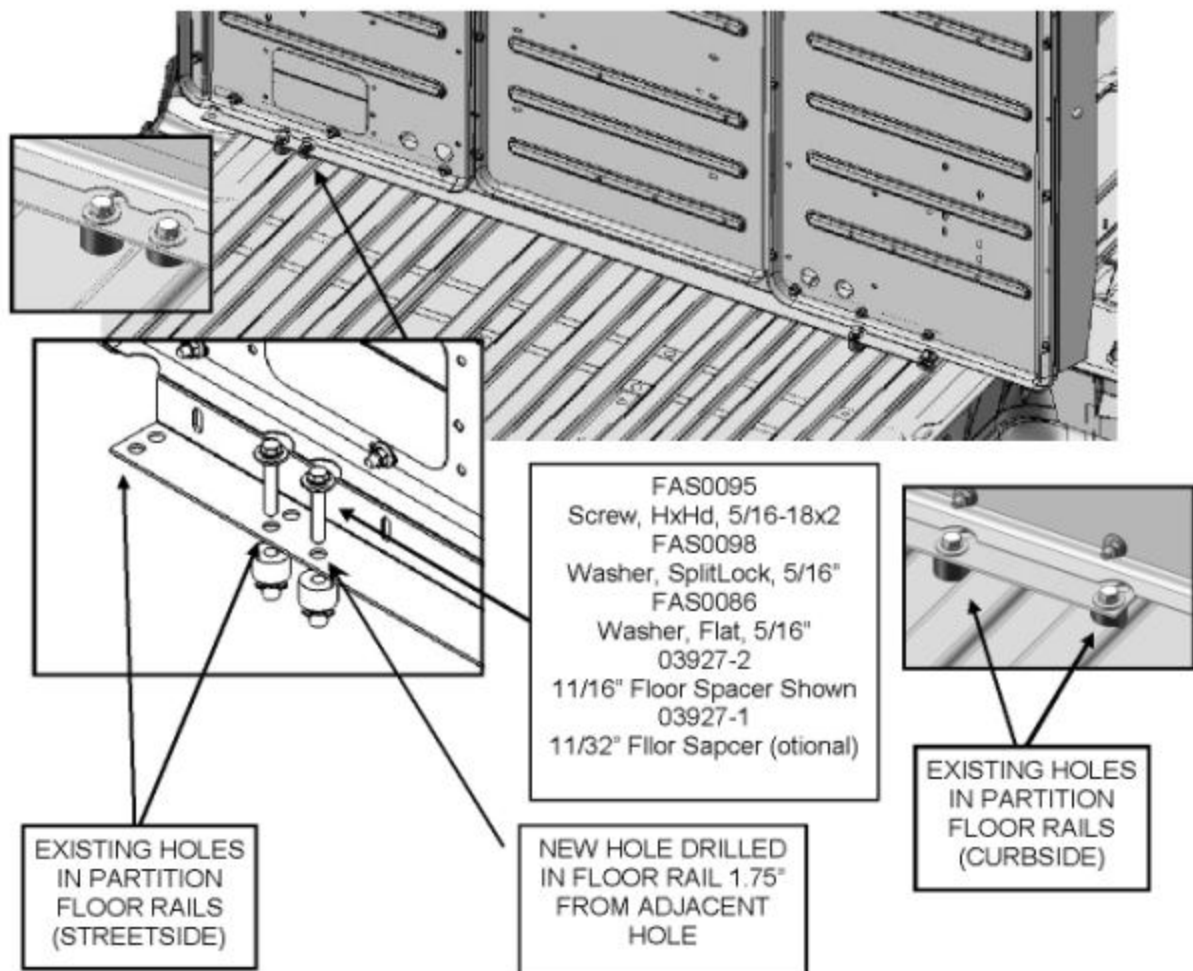
For GM FSV LEFT DOOR

Rail must be drilled for an additional hole dia. .437, when using this partition in left hand door vehicles.

Assemble partition using steps shown earlier in the installation instructions

Please note that Dodge 1998 & newer and GM 2003 and newer vans have a gas tank immediately below the floor at the partition line.

See page 2 for information on drill stops



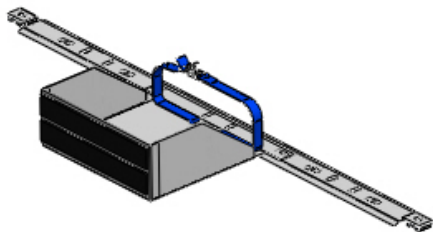
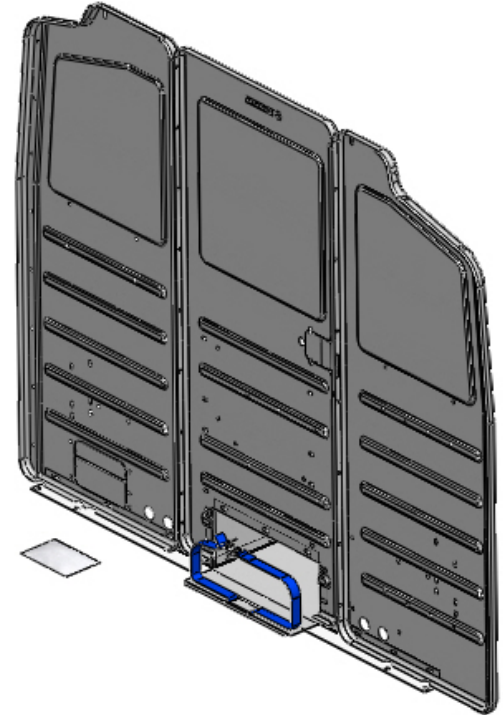
Please note that Dodge 1998 & newer and GM 2003 and newer vans have a gas tank immediately below the floor at the partition line. See pages 2 & 3 for info on drill stops



ADRIAN STEEL®

Cargo Management Solutions for Commercial Vehicles

Assembly/Installation Instructions and Owners Manual



(S1M1C1FLP SHOWN)

NOTE: THIS PRODUCT WILL NOT WORK WITH NISSAN +3 SETBACK PARTITIONS UNLESS PLUS NUT TO FLOOR, DOES NOT USE OEM HOLES

RAIL KIT MUST BE INSTALLED IN YOUR VEHICLE
FOR THIS ACCESSORY TO BE USED

**S_M_C_FLP AND SMCFLP+3
PARTITION PANEL KIT LONG PARTS STORAGE**

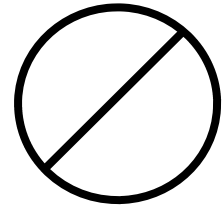
- PRECAUTIONS -



CAUTION



**THE USE OF AIR IMPACT TOOLS CAN
OVER-TORQUE FASTENERS AND
CAUSE FASTENER FAILURE!**



CAUTION



**ALL INSTALLATION HOLES SHOULD BE SEALED
WITH SILICON OR BUTYL SEALANT TO PREVENT
EXHAUST FUMES FROM ENTERING THE VEHICLE!**



DANGER



**INSPECT FOR FUEL TANK, FUEL LINES, BRAKE LINES, HIGH
VOLTAGE BATTERIES AND ELECTRICAL LINES PRIOR TO
DRILLING TO AVOID DAMAGING CRITICAL VEHICLE SYSTEMS
OR INJURY TO INSTALLER DURING INSTALLATION PROCESS!**



CAUTION



**TO AVOID DAMAGING THE VEHICLE ALWAYS USE DRILL
STOPS WHEN DRILLING ANY INSTALLATION HOLES!
ADRIAN AVAILABLE PART #'S 31121-0 (3/8" X 1/2"
DEEP), 31121-0 (1/2" x 1/2" DEEP)**



- IMPORTANT WARRANTY REQUIREMENTS -

1. **SUBSTITUTING ADRIAN STEEL SPECIFIED FASTENERS FOR ASSEMBLY AND/OR INSTALLATION WILL VOID YOUR PRODUCT WARRANTY.**
2. **ALL HOLES DRILLED INTO VEHICLE SHOULD HAVE THE RAW METAL EDGES SEALED WITH A SELF-ETCHING PRIMER TO RESIST CORROSION AND POTENTIAL FASTENER POINT FAILURE.**
3. **ALL FASTENERS USED IN THE INSTALLATION OF THIS PRODUCT SHOULD BE TIGHTENED TO THE TORQUE(S) SPECIFIED IN THESE INSTRUCTIONS.**
4. **THESE INSTRUCTIONS SHOULD BE KEPT WITH THE VEHICLE.**

THE BASIC TOOLS NEEDED FOR MOST INSTALLATIONS



DRILL



DRILL BIT WITH
STOP



RATCHET, SOCKETS
AND/OR WRENCHES



SCREWDRIVERS

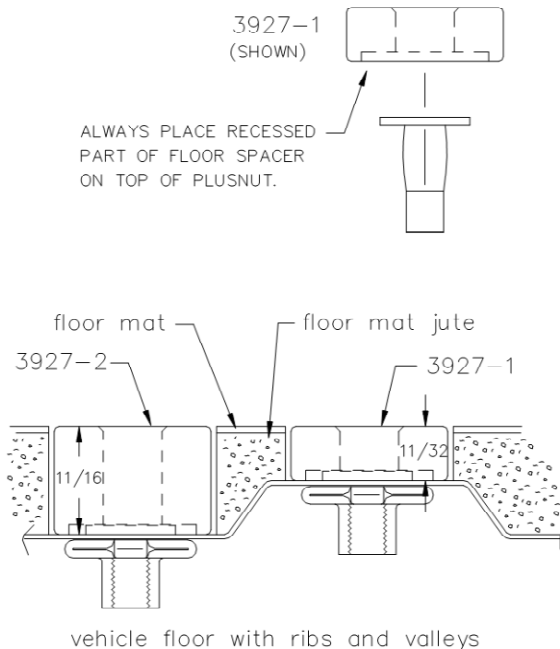


MEASURING TAPE

ADDITIONAL TOOLS MAY BE NEEDED FOR THIS INSTALLATION AND THEY WILL BE IDENTIFIED IN THE STEPS THAT FOLLOW.

Assembly/Installation Instructions and Owners Manual

If your vehicle contains carpet or a rubber floor mat you will need to prepare the mounting location. Position the product to be installed into the vehicle and once you are satisfied with the mounting locations, mark the mounting locations. Using a 1-3/16" diameter carpet cutter (P/N: 31183-0). Select the appropriate floor spacers as shown in the illustration. Set those aside for use later into the installation process. Using the correct drill bit size for the selected plusnut, drill the mounting holes in the vehicle sheet metal to prepare for installing the plusnuts. If you are thru-bolting at any of the locations simply drill a hole that is 1/16" larger than the bolt size(s) for those locations. Once you have drilled the holes into the vehicle, the raw metal edges should be sealed using a self-etching primer to resist corrosion and potential fastener point failure.



A PLUSNUT (RIVNUT) SETTING TOOL IS REQUIRED FOR PLUSNUT (RIVNUT) INSTALLATION . PLUS NUT SETTING TOOL CAN BE ORDERED THROUGH ADRIAN STEEL, OR USE AN AIR POWERED PLUSNUT SETTING GUN.

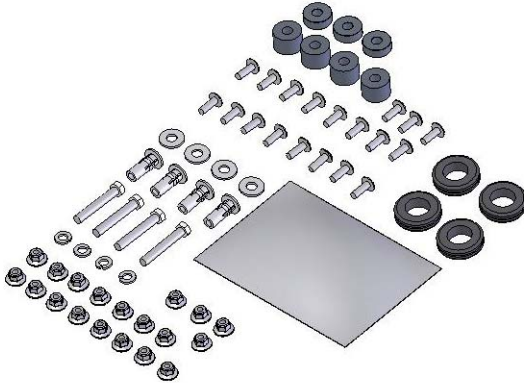
1/4-20UNC Plusnut (FAS0052) Use 3/8" dia. drill w/stop
FAS0080 SCREW, HXHD, 1/4-20UNCx2.00", G8
FAS0067 WASHER, FLAT, 1/4"ID
22200-0 PLUSNUT TOOL

5/16-18UNC Plusnut (FAS0091) Use 1/2" dia. drill w/stop
FAS0095 SCREW, HXHD, 5/16-18UNCx2.00", G8
FAS0086 WASHER, FLAT, 5/16"ID
22200-0 PLUSNUT TOOL

Place barrel of the plusnut body in sheet metal thru hole until flange is flush with sheet metal.

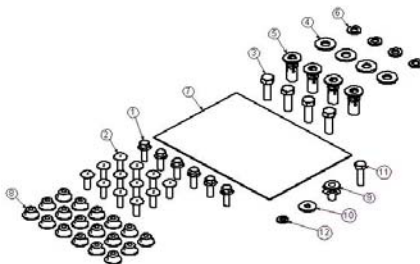
Using a 9/16" combination wrench of plusnut tool body and a second hand wrench, ratchet, or air tool, rotate the hex bolt head CW to draw plus nut flanges up (set the plusnut).

Assembly/Installation Instructions and Owners Manual



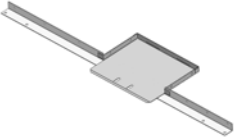


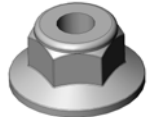

BAG37177 "BAG, FAS, FSV PNL KIT"

Part Number	Part Description	Qty
BAG0509-A	5"X9" 4MIL AUTOBAG	1
FAS0055	NUT,HX FLNG NYLCK 1/4-20	19
FAS0062	SCREW,THP 1/4-20X.75 P/G5	19
FAS0086	WASHER,FLAT 5/16	4
FAS0091	PLUSNUT,5/16-18 PB DC	4
FAS0095	SCREW,HH 5/16-18X2 ZN G8	4
FAS0098	WASHER,LOCK,SPLIT 5/16	4
03927-1	SPACER,C/F 1006,11/32,FLR	3
03927-2	SPACER,C/F 1006,11/16,FLR	4
36096-0	GROMMET,RUBBER,1"ID	4

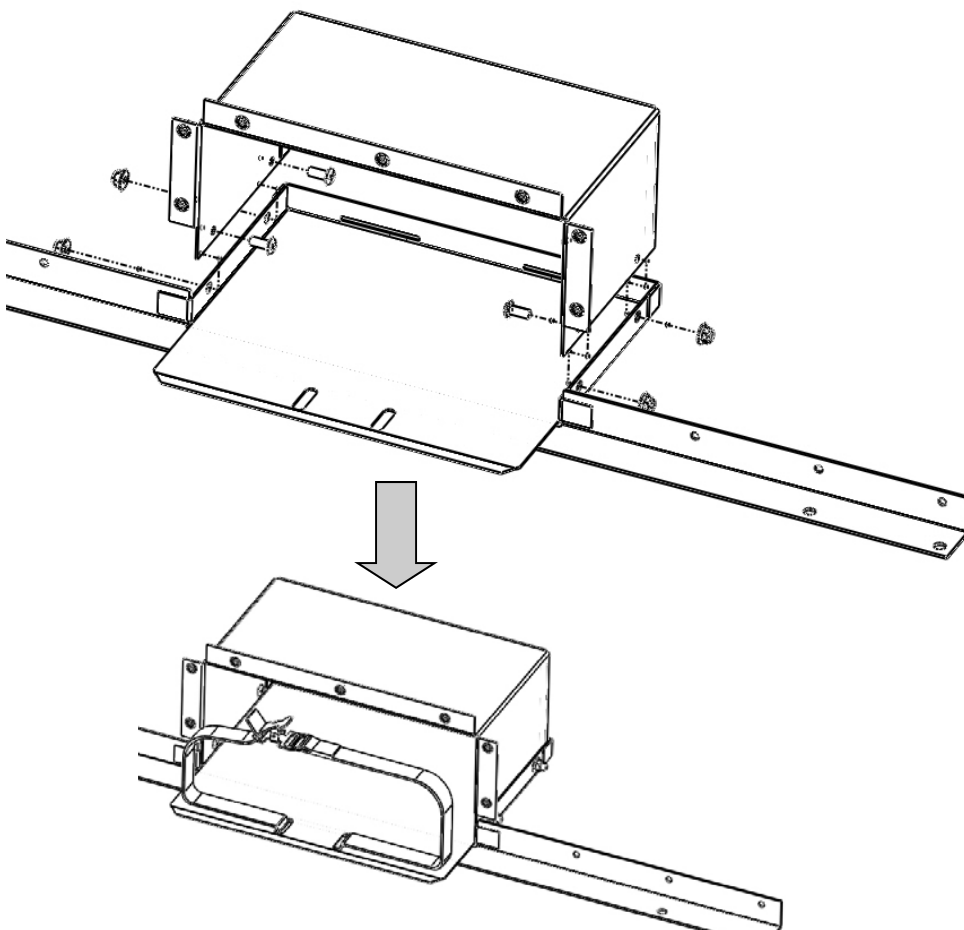


BAG37178 "BAG, FAS, WING KIT, FSV"

Part Number	Part Description	Qty
BAG0507-A	5" X 7" 3 MIL AUTOBAG	1
FAS0054	SCRW,SERT HX FLNG 1/4-20	6
FAS0055	NUT,HX FLNG NYLCK 1/4-20	18
FAS0062	SCREW,THP 1/4-20X.75 P/G5	12
FAS0082	SCREW,HH 5/16-18X1ZNYELG8	4
FAS0086	WASHER,FLAT 5/16	4
FAS0091	PLUSNUT,5/16-18 PB DC	4
FAS0098	WASHER,LOCK,SPLIT 5/16	4
FAS0078	SCREW, HH 1/4-20 X1 SZ G8	1
FAS0067	WASHER, FLAT 1/4	1
FAS0060	WASHER, LOCK, SPLIT 1/4	1
FAS0052	PLUSNUT, 1/4-20 PB DC	1

PARTS YOU WILL USE FOR STEP 01	LPS, FOOTER 39811-G, 41945-G OR 55638-G (1) EACH	LPS, TOP COVER 39941-G, 41945-G OR 55636-G (1) EACH	FAS0062 1/4-20 X 0.75 SCREW, THP (4) EACH	FAS0055 1/4-20 NYLOCK FLANGE NUT (4) EACH
				
	STRAP 33274-0 (1) EACH			
				

Instructions for Step 01











ASSEMBLE THE TOP COVER TO THE FOOTER AS SHOWN. USE THE FASTENERS LISTED ABOVE TO SECURE THE ASSEMBLY.

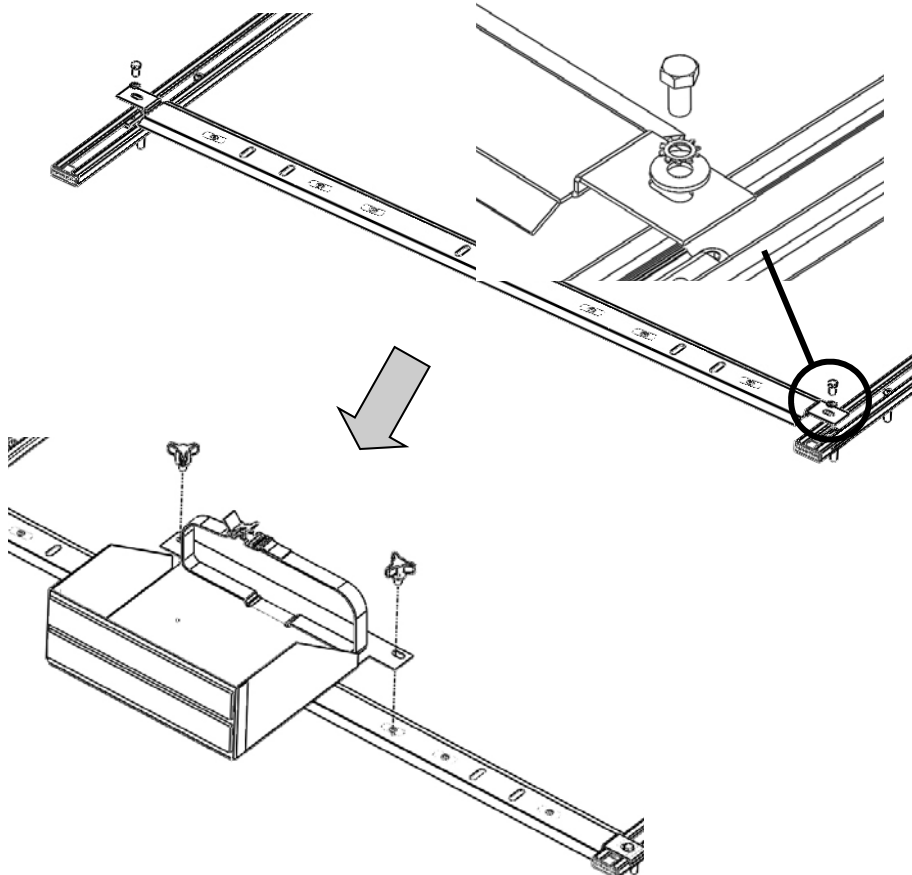
TORQUE FASTENERS TO 8 FT. LBS.

INSERT THE STRAP END THROUGH THE SLOTS IN THE FOOTER PLATE AS SHOWN.

NOTE: DOES NOT WORK WITH 3" SET BACK IN NISSAN NV UNLESS PLUS NUT TO FLOOR, DOES NOT USE OEM HOLES

PARTS YOU WILL USE FOR STEP 02	REAR HOLDER ASSM. 40029-G (1) EACH	REAR BOX ASSM. 40167-G (1) EACH	STRAP 33274-0 (1) EACH	HAND KNOB 16274-0 (2) EACH
				
	SCREW, 5/16-18 x 0.625 FAS0165 (2) EACH	LOCK WASHER, 5/16" FAS0085 (2) EACH	WASHER, 5/16" FAS0086 (2) EACH	SLIDE 35335-0 (2) EACH
				

Instructions for Step 02



INSERT THE SLIDES INTO THE ENDS (REAR OF VEHICLE) OF THE FLOOR MOUNTING RAILS AND ATTACH THE REAR HOLDER ASSEMBLY AS SHOWN USING THE ABOVE LISTED FASTENERS.


DO NOT FULLY TIGHTEN THE FASTENERS AT THIS TIME!

INSERT THE STRAP END THROUGH THE SLOTS IN THE REAR BOX ASSEMBLY AS SHOWN. SECURE THE REAR BOX ASSEMBLY TO THE REAR HOLDER AS SHOWN USING THE TWO HAND KNOBS.

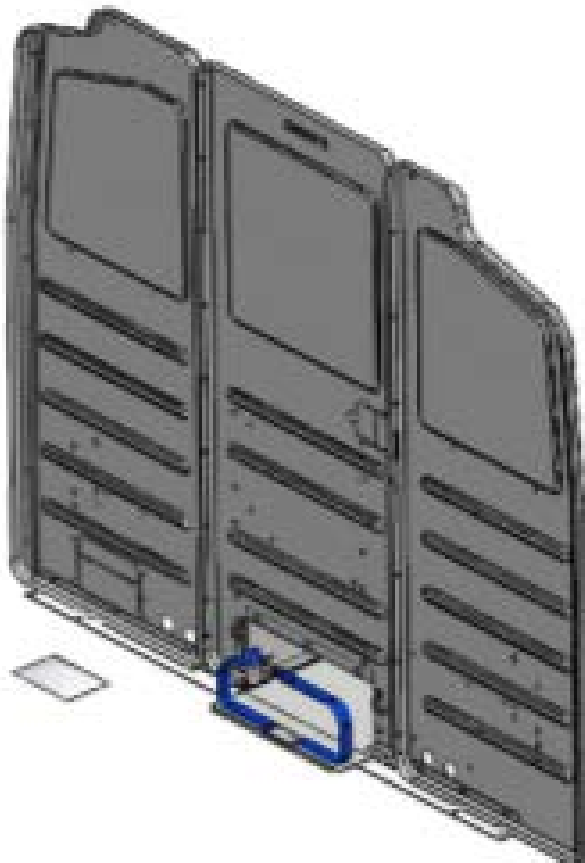
ADJUST THE ENTIRE ASSEMBLY REARWARD UNTIL THE RUBBER PADS ON THE REAR BOX JUST TOUCH THE VEHICLE DOOR.

TORQUE FASTENERS TO THE SLIDES TO 8 FT. LBS.

IF ASSEMBLING MIFLP3-5 SKIP STEP 02 NOT REQUIRED

PARTS YOU WILL USE FOR STEP 03	APPROPRIATE M- PANEL WITH CUTOUT FOR YOUR APPLICA-	APPROPRIATE S & C PANELS FOR YOUR APPLICATION		
				

Instructions for Step 03



YOU ARE NOW READY FOR THE REMAINDER OF YOUR PARTITION ASSEMBLY TO PROCEED.

TO CONTINUE YOUR INSTALLATION AND ASSEMBLY OF THE PARTITION PANEL & WING KIT ASSEMBLY BY USING ONE OF THE FOLLOWING INSTRUCTIONS:

FOR FORD or GM PARTITION AND WING KITS, PROCEED TO PAGE 7 OF DOCUMENT #37193-0.

FOR NISSAN PARTITION AND WING KITS, PROCEED TO PAGE 9 OF DOCUMENT #40183.

NOTE: DOES NOT WORK WITH 3" SET BACK IN NISSAN NV UNLESS PLUS NUT TO FLOOR, DOES NOT USE OEM HOLES