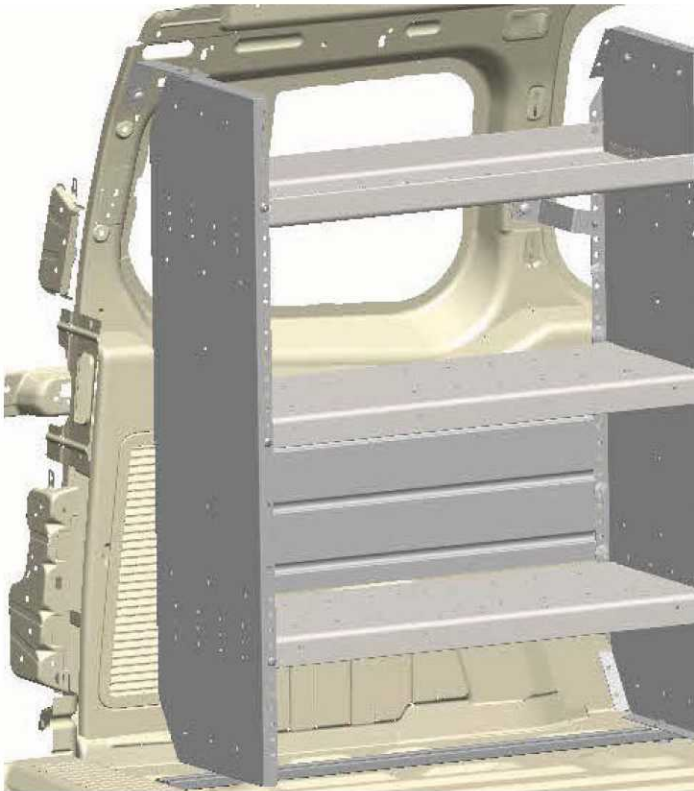




ADRIAN STEEL

Cargo Management Solutions for Commercial Vehicles

RAIL KIT, 38" 2014 TRANSIT CONNECT



PRODUCT WEIGHT

5 LBS.

WIDTH x DEPTH x HEIGHT

N/A

CAPACITY

**(1) AD1226TC14 or
(1) AD1232TC14 or
(1) AD1426TC14 or
(1) AD1432TC14**

COLOR

GRAY

CATALOG NUMBER

RKTC14

PRODUCT FEATURES

38" RAIL KIT designed for one AD1226TC14 or one AD1232TC14 or one AD1426TC14, or one AD1432TC14 Shelving unit. You can use one on either side or with two kits both sides.

PRODUCT APPLICATION

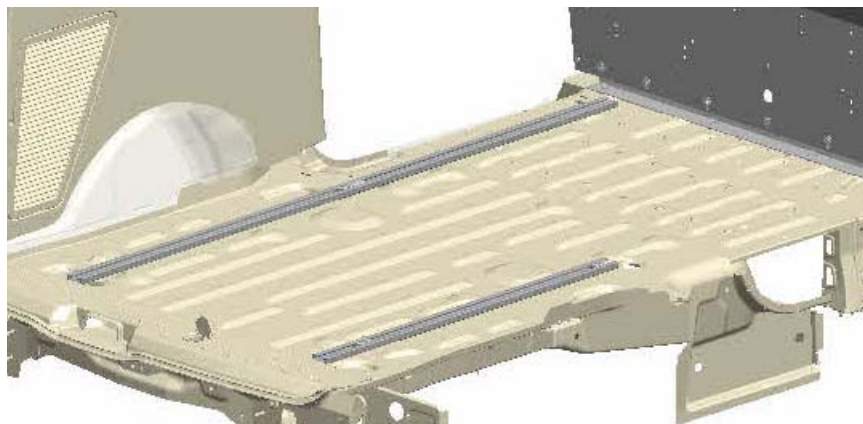
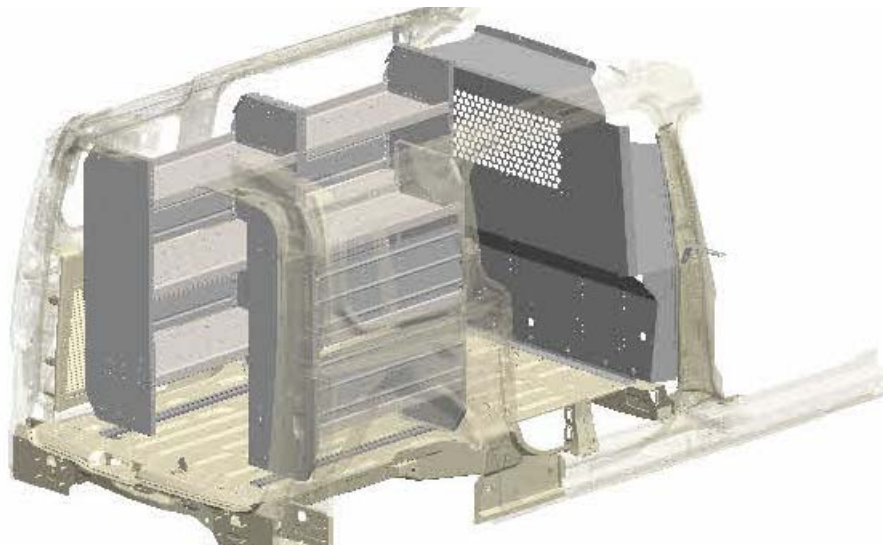
This product is designed for installation into the 2014 Ford Transit Connect only.

Introduction / Comments:

RKTC14 RAIL KIT 38" 2014 TRANSIT CONNECT .
THIS RAIL KIT WILL WORK IN SHORT OR LONG WHEELBASE.

RKDTC14 RAIL KIT 70" 2014 TRANSIT CONNECT SHELF ASSEMBLY.
THIS RAIL KIT WILL ONLY WORK IN LONG WHEEL BASE.

Note: It is advised that all fasteners used in this assembly and installation should be checked for tightness at the following intervals: @ 2-weeks and again @ 6-weeks of operation. This preventive maintenance step must be completed to Ensure your Product gives you long service life



LONG WHEELBASE VAN SHOWN

- PRECAUTIONS -



CAUTION



**THE USE OF AIR IMPACT TOOLS CAN
OVER-TORQUE FASTENERS AND
CAUSE FASTENER FAILURE!**



CAUTION



**ALL INSTALLATION HOLES SHOULD BE SEALED
WITH SILICON OR BUTYL SEALANT TO PREVENT
EXHAUST FUMES FROM ENTERING THE VEHICLE!**



DANGER



**INSPECT FOR FUEL TANK, FUEL LINES, BRAKE LINES, HIGH
VOLTAGE BATTERIES AND ELECTRICAL LINES PRIOR TO
DRILLING TO AVOID DAMAGING CRITICAL VEHICLE SYSTEMS
OR INJURY TO INSTALLER DURING INSTALLATION PROCESS!**



CAUTION



**TO AVOID DAMAGING THE VEHICLE ALWAYS USE DRILL
STOPS WHEN DRILLING ANY INSTALLATION HOLES!
ADRIAN AVAILABLE PART #'S 31121-0 (1/2" DEEP),
31122-0 (3/4" DEEP)**



- IMPORTANT WARRANTY REQUIREMENTS -

1. SUBSTITUTING ADRIAN STEEL SPECIFIED FASTENERS FOR ASSEMBLY AND/OR INSTALLATION WILL VOID YOUR PRODUCT WARRANTY.
2. ALL HOLES DRILLED INTO VEHICLE SHOULD HAVE THE RAW METAL EDGES SEALED WITH A SELF-ETCHING PRIMER TO RESIST CORROSION AND POTENTIAL FASTENER POINT FAILURE.
3. ALL FASTENERS USED IN THE INSTALLATION OF THIS PRODUCT SHOULD BE TIGHTENED TO THE TORQUE(S) SPECIFIED IN THESE INSTRUCTIONS.
4. THESE INSTRUCTIONS SHOULD BE KEPT WITH THE VEHICLE.

THE BASIC TOOLS NEEDED FOR MOST INSTALLATIONS



DRILL



DRILL BIT WITH
STOP



RATCHET, SOCKETS
AND/OR WRENCHES



SCREWDRIVERS



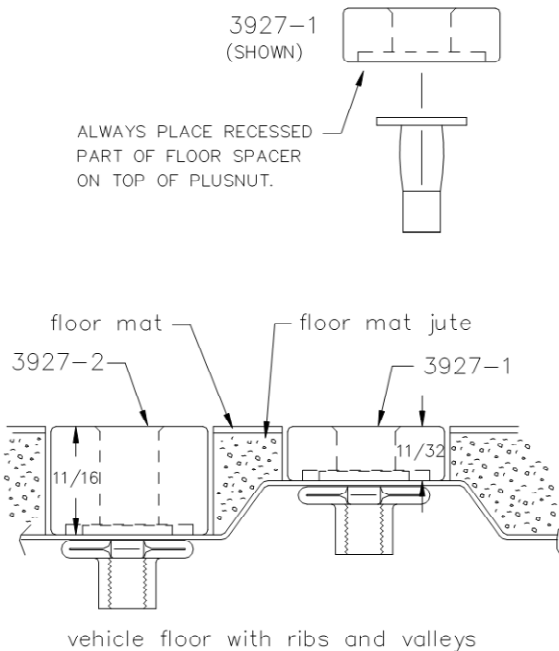
MEASURING TAPE

ADDITIONAL TOOLS MAY BE NEEDED FOR THIS INSTALLATION AND THEY WILL BE IDENTIFIED IN THE STEPS THAT FOLLOW.

If your vehicle contains carpet or a rubber floor mat you will need to prepare the mounting location. Position the product to be installed into the vehicle and once you are satisfied with the mounting locations, mark the mounting locations. Using a 1-3/16" diameter carpet cutter (P/N: 31183-0). Select the appropriate floor spacers as shown in the illustration. Set those aside for use later into the installation process. Using the correct drill bit size for the selected plusnut, drill the mounting holes in the vehicle sheet metal to prepare for installing the plusnuts.

If you are thru-bolting at any of the locations simply drill a hole that is 1/16" larger than the bolt size(s) for those locations.

Once you have drilled the holes into the vehicle, the raw metal edges should be sealed using a self-etching primer to resist corrosion and potential fastener point failure.



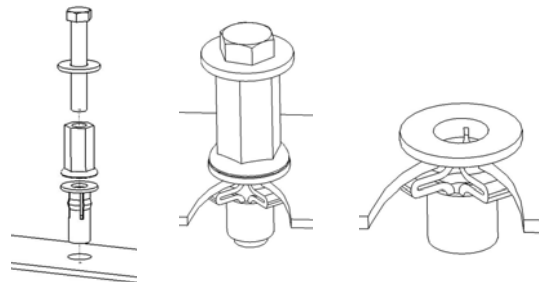
A PLUSNUT (RIVNUT) SETTING TOOL IS REQUIRED FOR PLUSNUT (RIVNUT) INSTALLATION AND IS SUPPLIED WITH THIS KIT. OR USE AN AIR POWERED PLUSNUT SETTING GUN.

1/4-20UNC Plusnut (FAS0052) Use 3/8" dia. drill w/stop

FAS0080 SCREW, HXHD, 1/4-20UNCx2.00", G8
FAS0067 WASHER, FLAT, 1/4"ID
22200-0 PLUSNUT TOOL

5/16-18UNC Plusnut (FAS0091) Use 1/2" dia. drill w/stop

FAS0095 SCREW, HXHD, 5/16-18UNCx2.00", G8
FAS0086 WASHER, FLAT, 5/16"ID
22200-0 PLUSNUT TOOL

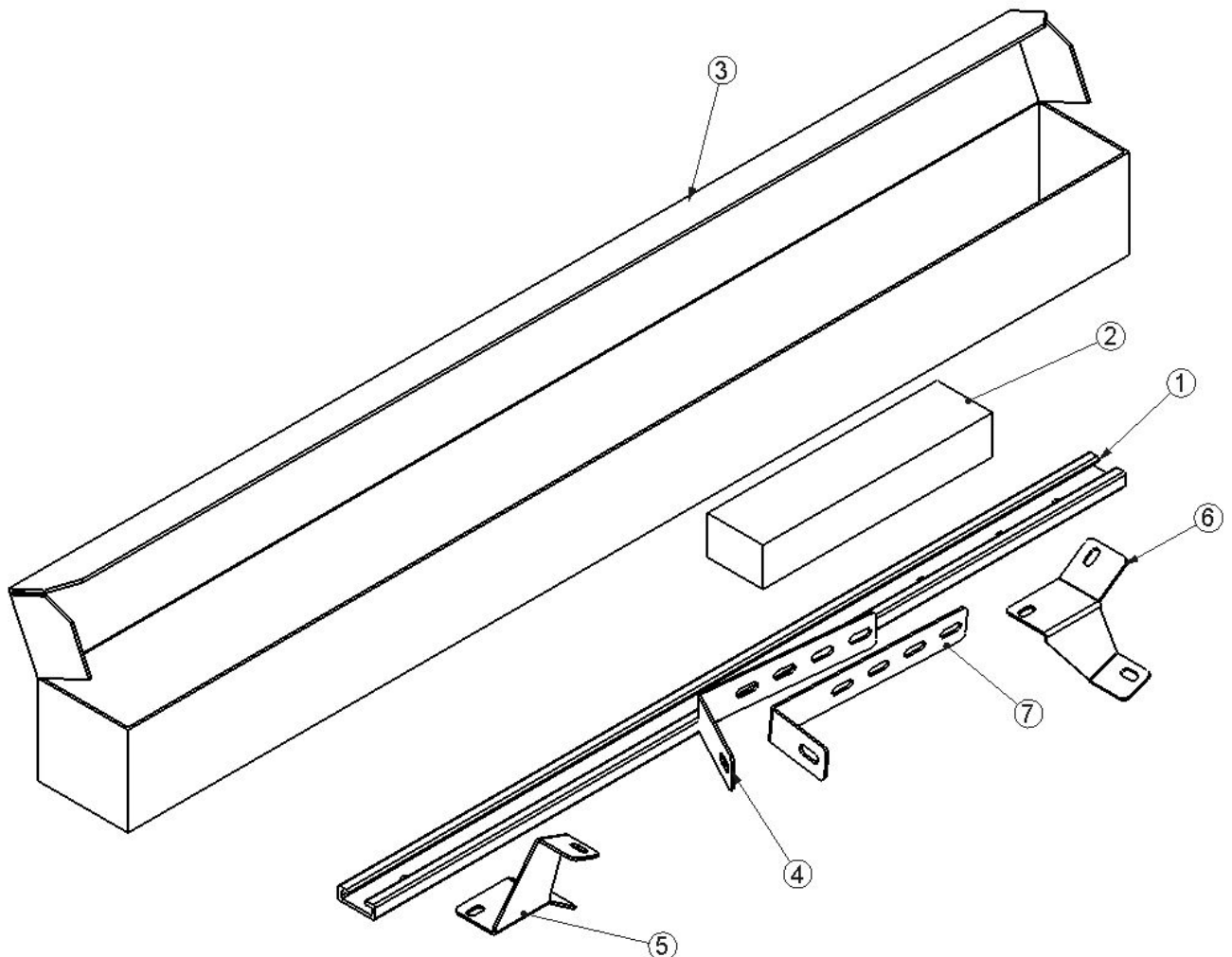


Place barrel of the plusnut body in sheet metal thru hole until flange is flush with sheet metal.

Using a 9/16" combination wrench of plusnut tool body and a second hand wrench, ratchet, or air tool, rotate the hex bolt head CW to draw plus nut flanges up (set the plusnut).

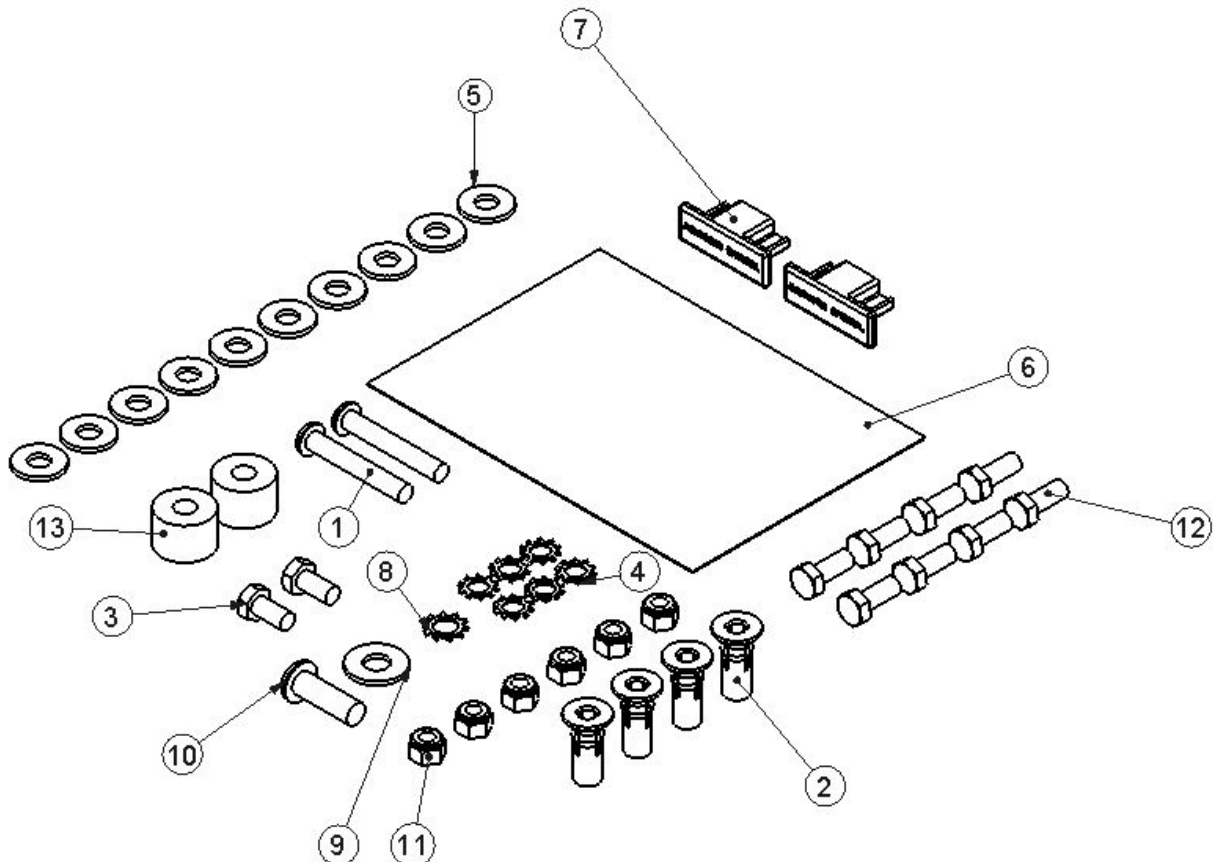
RKTC14

ITEM NO.	PART NUMBER	DESCRIPTION	RKTC14/QT Y.
1	43978	RAIL, ALUMINUM X 38.00	1
2	HDWRKTC14	HDW KIT, 2014 TRANSIT CONNECT	1
3	CRTRKTC14	CARTON AD RAIL 2014 TC	1
4	44355-G	REAR MTG BRKT, 2014 TC	1
5	46947-G	FRONT CORNER BRKT, TC, SS	1
6	46946-G	FRONT CORNER BRKT, TC, CS	1
7	46945-G	FRONT MTG BRKT, 2014 TC	1



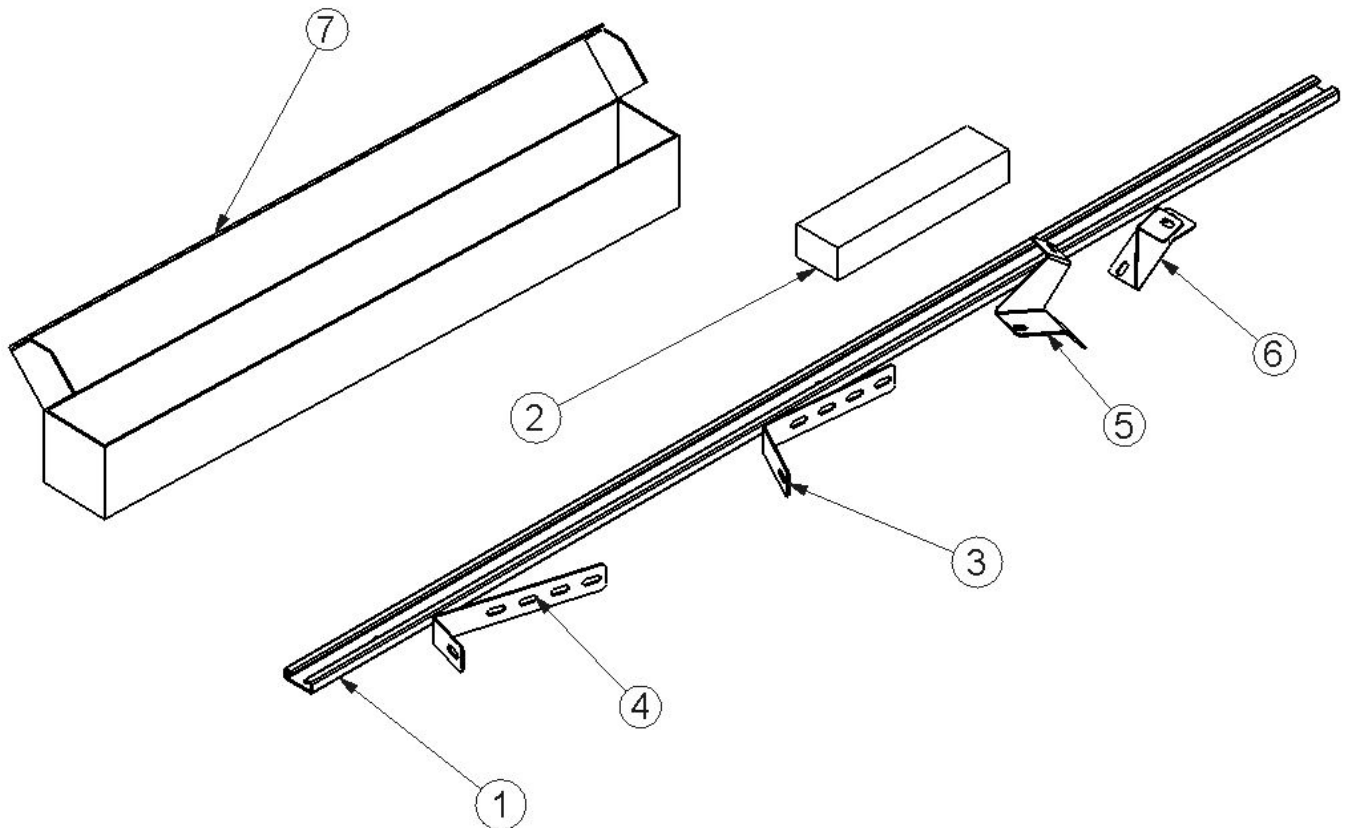
BAGRKTC14 IS PART OF RKTC14 AND RKDTC14

ITEM NO.	PART NUMBER	DESCRIPTION	QTY
1	FAS0048	Screw, Button Hd Hex Soc, 5/16-18X 2, BLK OXIDE	2
2	FAS0091	Plusnut, 5/16	4
3	FAS0165	Screw, Hex Hd, 5/16-18x.625	2
4	FAS0085	Washer, Lock, Ext. Tooth, 5/16	6
5	FAS0086	WASHER,FLAT USS 5/16 ZP	10
6	BAG0507-A	5" x 7" 3MIL AUTOBAG	1
7	36496-0	END CAP	2
8	FAS0105	Washer, Lock, Ext. Tooth, 3/8, NI ZN	1
9	FAS0104	Washer, Flat, 3/8, NI ZN	1
10	FAS0728	Screw, Button Hd Hex Soc, M10 x1.5 x 30mm	1
11	FAS0090	Nut, Nylon Insert Lock, 5/16-18, Zi	6
12	FAS0081	Screw, Hex Hd, 5/16-18x0.75 Zn Plate	8
13	03927-2	Tall Floor Spacer	2



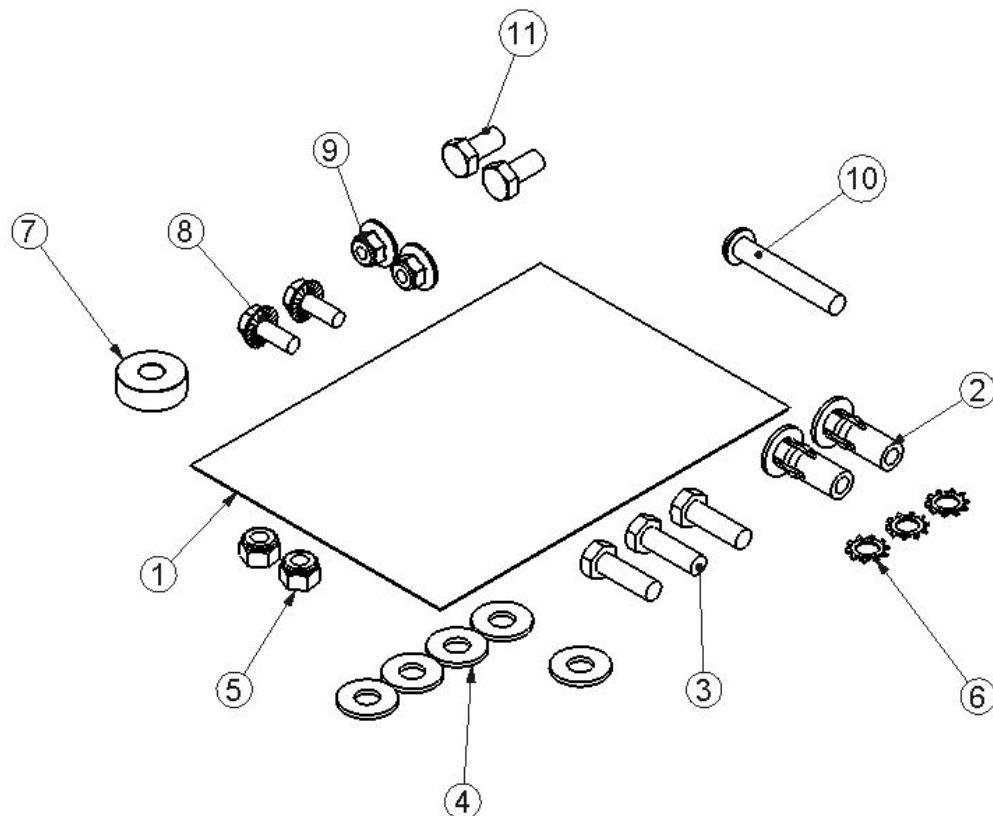
RKDTC14

ITEM NO.	PART NUMBER	DESCRIPTION	RKDTC14/QTY.
1	44351	RAIL 70" TC 14	1
2	HDWRKDTC14	HDW KIT, 2014 TRANSIT CONNECT	1
3	44355-G	REAR MTG BRKT, 2014 TC	1
4	46945-G	FRONT MTG BRKT, 2014 TC	1
5	46946-G	FRONT CORNER BRKT, TC, CS	1
6	46947-G	FRONT CORNER BRKT, TC, SS	1
7	CRTRKTC14	CARTON AD RAIL 2014 TC	1

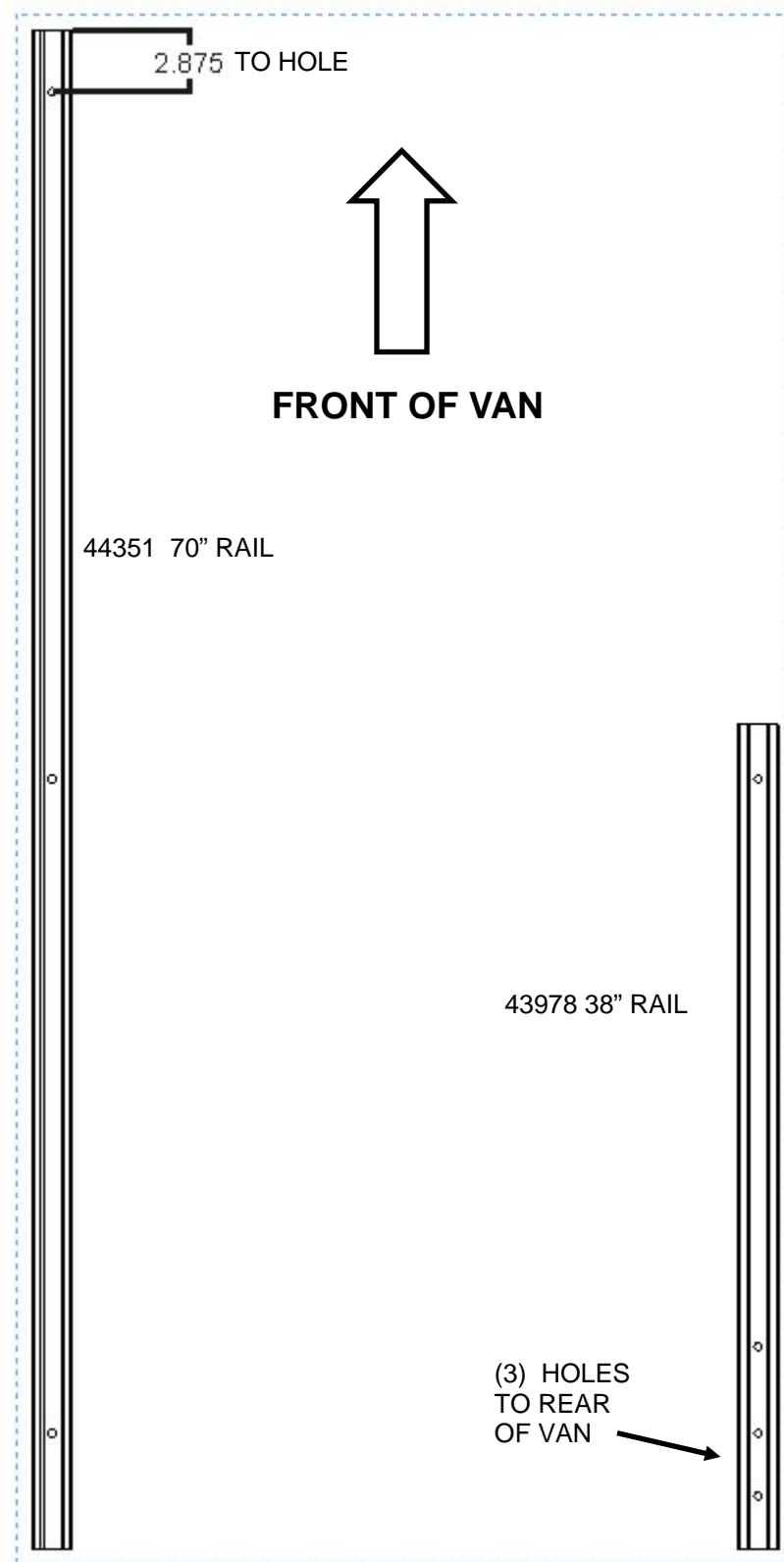


BAG46965 IS PART OF RKDTC14

ITEM NO.	PART NUMBER	DESCRIPTION	QTY
1	BAG0507-A	5" x 7" 3MIL AUTOBAG	1
2	FAS0091	Plusnut, 5/16	2
3	FAS0119	Screw, Hex Hd, 5/16-18x1.00 Zn-Ni (1000 hour)	5
4	FAS0112	Washer, Flat, 5/16, NI ZN	5
5	FAS0090	Nut, Nylon Insert Lock, 5/16-18, Zi	2
6	FAS0085	Washer, Lock, Ext. Tooth, 5/16	3
7	03927-1	Floor Spacer Short	1
8	FAS0018	SCREW,HH SFLNG 1/4-20X.62 ZP	2
9	FAS0055	Nut, Hex Flange,Nylock 1/4-20	2
10	FAS0048	Screw, Button Hd Hex Soc, 5/16-18X 2, BLK OXIDE	1
11	FAS0165	Screw, Hex Hd, 5/16-18x.625	2



ORIENTATION OF RAILS IN VAN

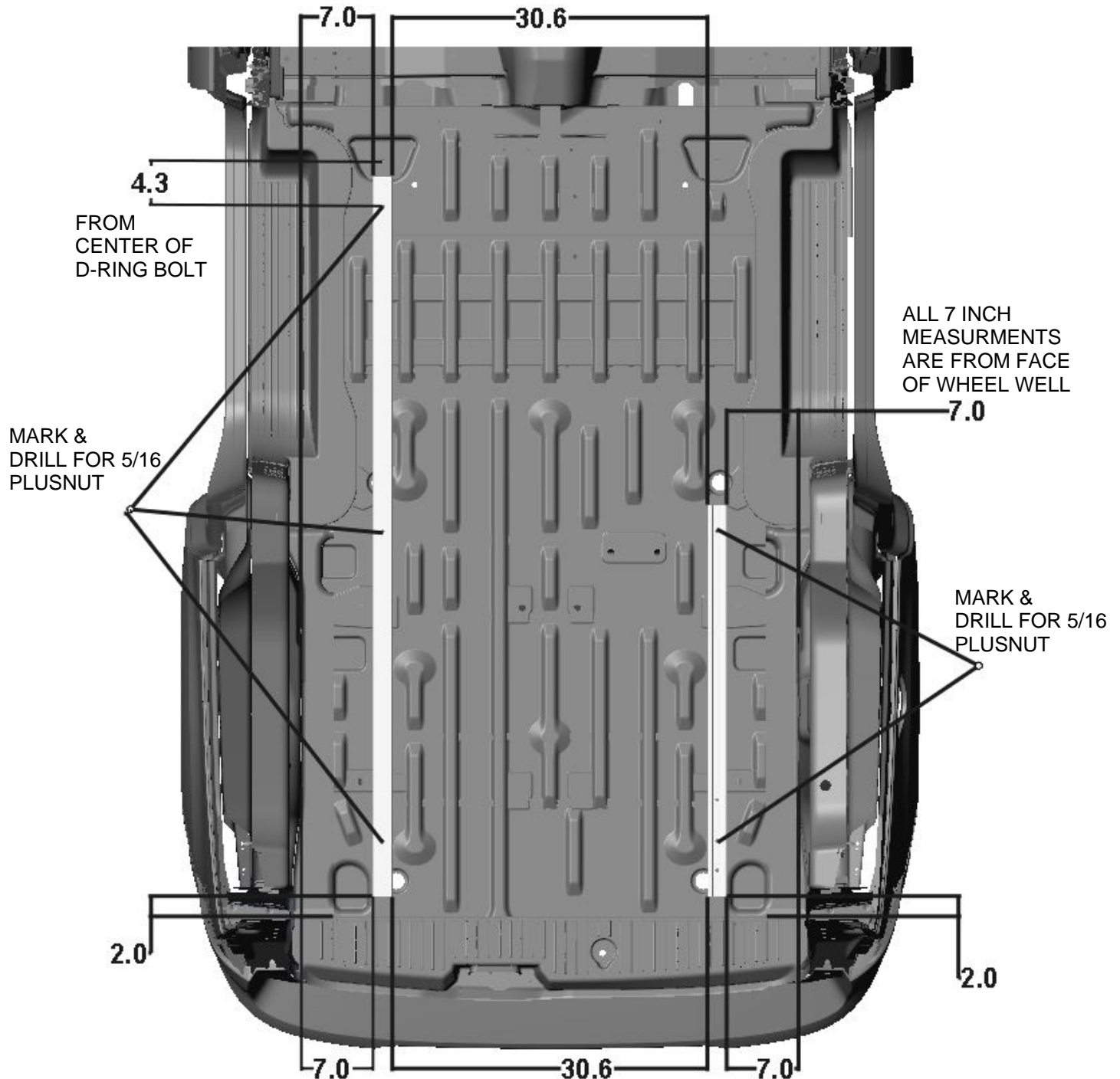


44351 70" OR 43978 38" RAIL INSTALL

NOTE: THIS STEP DETERMINES CORRECT RAIL POSITION IN VEHICLE
70" RAIL INSTALL FOLLOW LEFT SIDE OF PICTURE

38" RAIL INSTALL FOLLOW RIGHT SIDE OF PICTURE

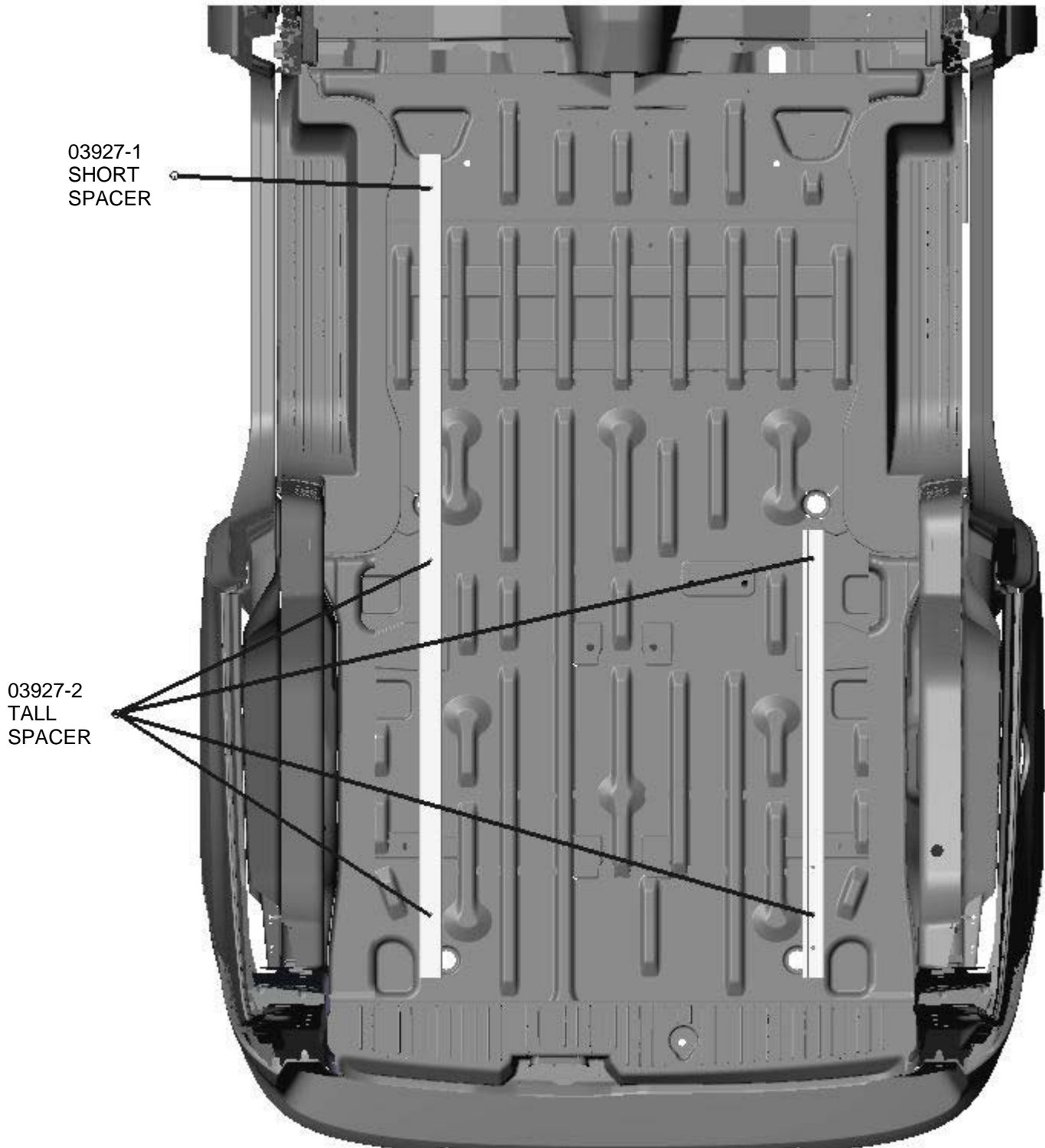
RAILS ARE TO BE INSTALLED AND CONFIGURED PER PACKAGE LAYOUT, OR CUSTOMER SPECIFICATIONS (PICTURE SHOWN ONLY FOR REFERENCE)



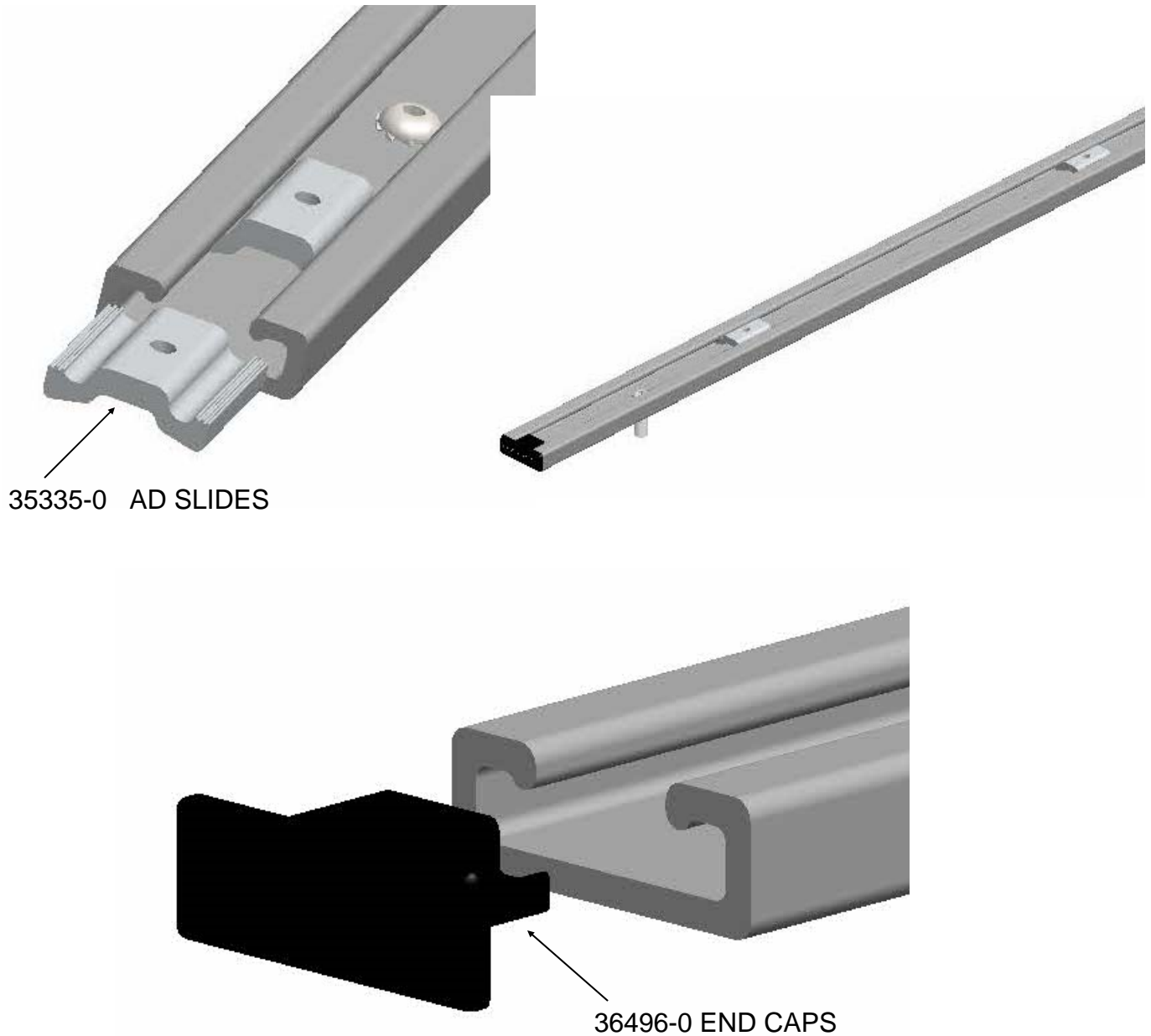
FASTENERS NEEDED TO COMPLETE RAIL INSTALL:

EVERY LOCATION GETS

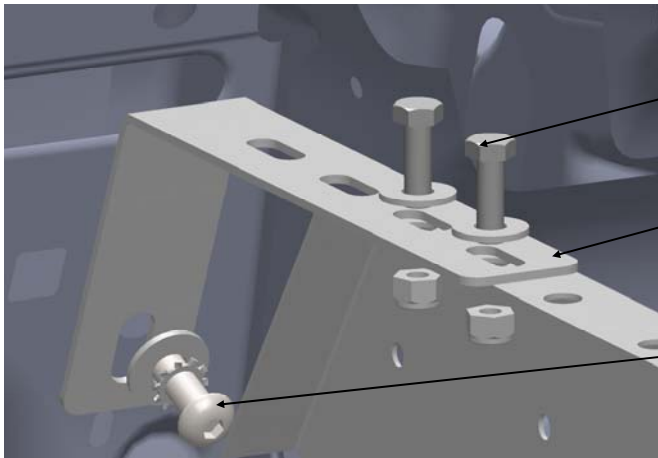
- (1) FAS0048 BUTTON HEAD SCREW 5/16-18 X 2.00"
- (1) FAS0085 WASHER, LOCK, EXT TOOTH 5/16
- (1) 03927-1 SHORT SPACER, OR (1) 03927-2 TALL SPACER (REFER BELOW FOR CORRECT SPACER PLACEMENT)



PLACE TWO SLIDES 35335-0 INTO 38" RAIL; PLACE FOUR SLIDES IN 70" RAILS
ATTACH END CAP 36496-0 ON EACH END OF RAILS.



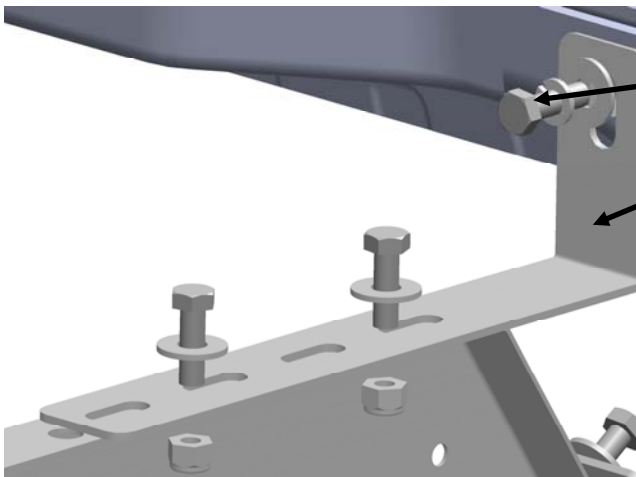
ATTACH END PANEL BRACKETS AS SHOWN BELOW



- (2)FAS0119 5/16-18 X 1.00 SCREW
- (2)FAS0112 5/16 FLAT WASHER
- (2)FAS0090 5/16-18 LOCK NUT

44355-G REAR MTG BRKT.

- (1)FAS0728 10mmX1.5X3 0mm SCREW
- (1)FAS0105 3/8 LOCK WASHER
- (1)FAS0104 3/8 FLAT WASHER

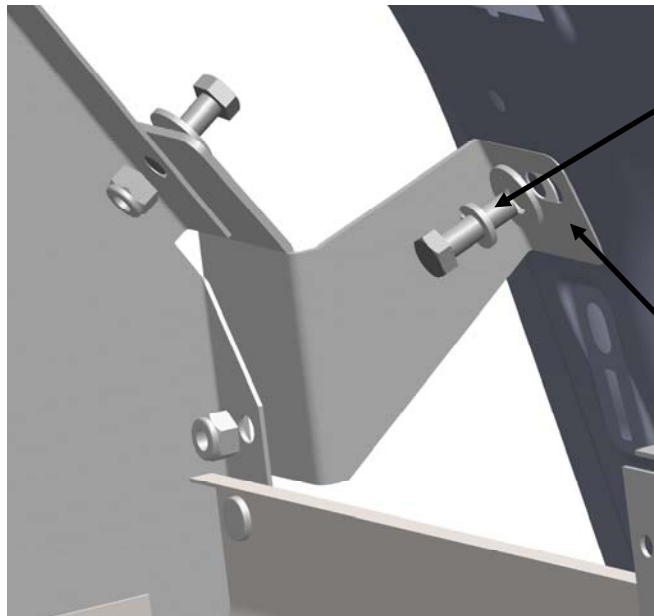


- (3)FAS0119 5/16-18 X 1.00 SCREW
- (3)FAS0112 5/16 FLAT WASHER
- (3)FAS0090 5/16-18 LOCK NUT

46945-G FRONT MTG BRKT.

ATTACH END PANEL WITH BRACKETS. BRACKETS WILL BE MOUNTED WITH PLUSNUTS.

USE THE BRACKETS TO MARK LOCATIONS FOR PLUSNUTS.



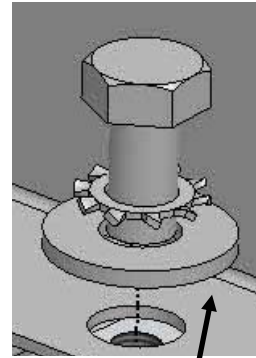
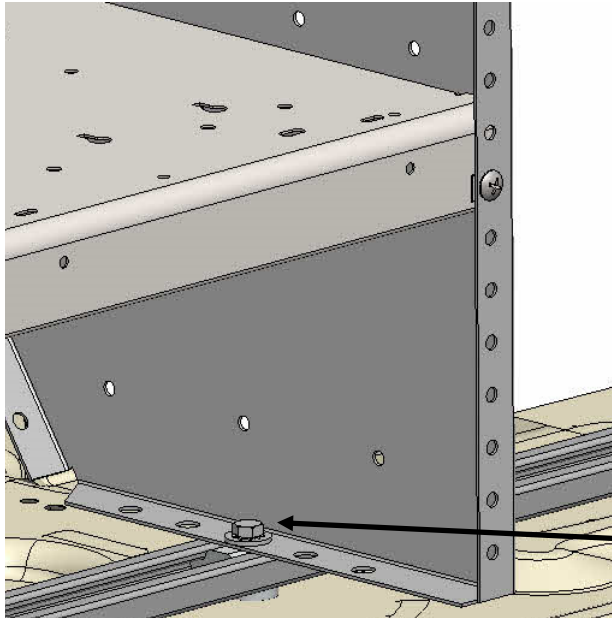
(3)FAS0119 5/16-18 X 1.00 SCREW
(3)FAS0112 5/16 FLAT WASHER
(3)FAS0090 5/16-18 LOCK NUT

46946-G FRONT CORNER BRKT. CS
OR
46947-G FRONT CORNER BRKT. SS



(2)FAS0091—5/16 PLUSNUT

****MUST USE DRILL STOP
WHEN DRILLING.**



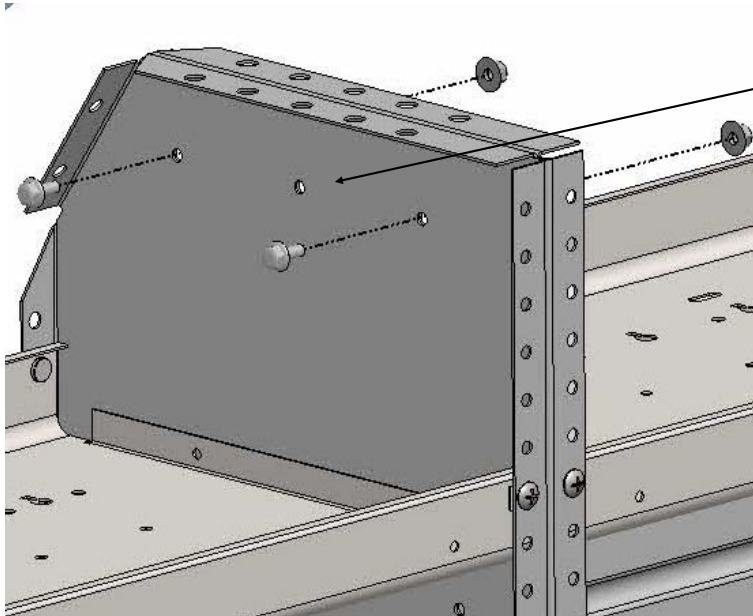
SECURE KD TO RAIL USING
(1) FAS0165 5/16-18 X .62 SCREW
(1) FAS0085 5/16 LOCK WASHER
(1) FAS0086 5/16 FLAT WASHER
(1) 35335-0 SLIDE
(REPEAT FOR EACH END PANEL)

ONCE KD IS IN PROPER POSITION. TIGHTEN ALL FASTENERS

**YOUR INSTALLATION IS NOW COMPLETE
IF ONLY INSTALLING (1) KD PER SIDE**

**DOUBLE CHECK ALL FASTENERS LOCATIONS TO BE SURE THAT ALL
FASTENERS ARE TIGHTENED TO SPECIFICATIONS.
YOUR INSTALLATION IS NOW COMPLETE!
STOW THIS COPY IN THE VEHICLE FOR FUTURE REFERENCES!**

**RKDTC14 70" RAIL KIT.
WHEN INSTALLING FRONT KD ATTACH AS SHOWN BELOW**



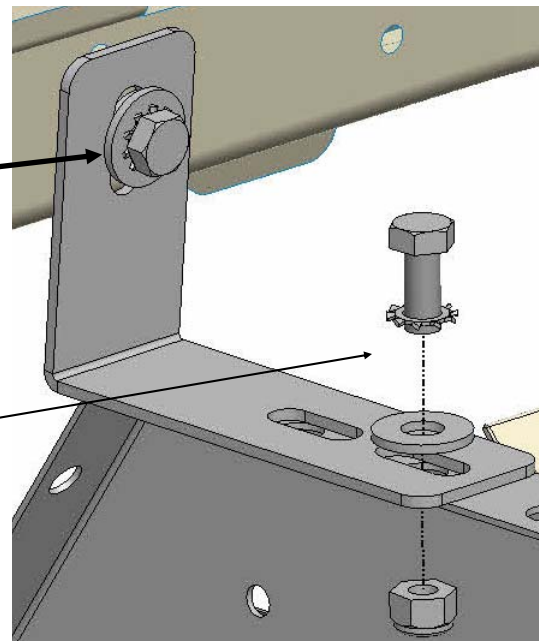
- (2) FAS 0018 1/4-20 SCREW
- (2) FAS0055 1/4-20 LOCK NUT

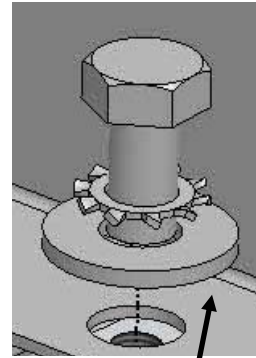
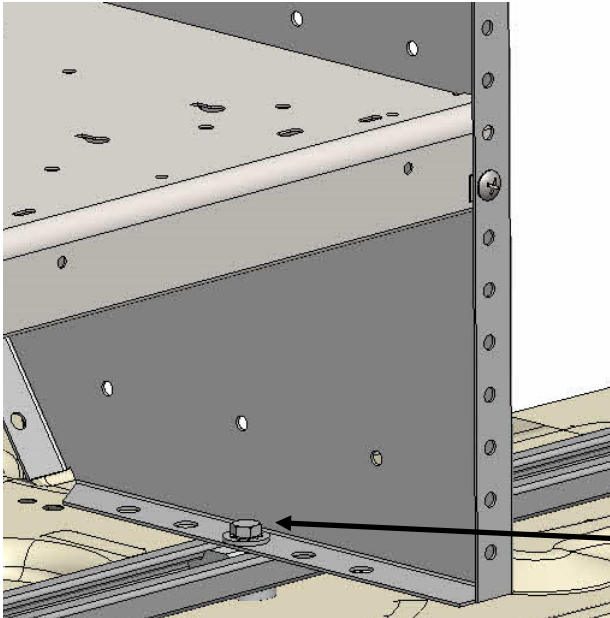
ATTACH END PANEL WITH BRACKET. BRACKET WILL BE MOUNTED WITH PLUSNUT.

USE THE BRACKET TO MARK LOCATION FOR PLUSNUT.

- (1)FAS0081 5/16-18 SCREW
- (1)FAS0085 5/16 LOCK WASHER
- (1)FAS0086 5/16 FLAT WASHER
- (1) FAS0091 5/16 PLUSNUT

- (1)FAS0081 5/16-18 SCREW
- (1)FAS0086 5/16 FLAT WASHER
- (1)FAS0090 5/16-18 LOCK NUT





SECURE KD TO RAIL USING
(1) FAS0165 5/16-18 X .62 SCREW
(1) FAS0085 5/16 LOCK WASHER
(1) FAS0086 5/16 FLAT WASHER
(1) 35335-0 SLIDE
(REPEAT FOR EACH END PANEL)

ONCE KD IS IN PROPER POSITION. TIGHTEN ALL FASTENERS

**YOUR INSTALLATION IS NOW COMPLETE
IF INSTALLING (2) KDs PER SIDE**

**DOUBLE CHECK ALL FASTENERS LOCATIONS TO BE SURE THAT ALL
FASTENERS ARE TIGHTENED TO SPECIFICATIONS.
YOUR INSTALLATION IS NOW COMPLETE!
STOW THIS COPY IN THE VEHICLE FOR FUTURE REFERENCES!**