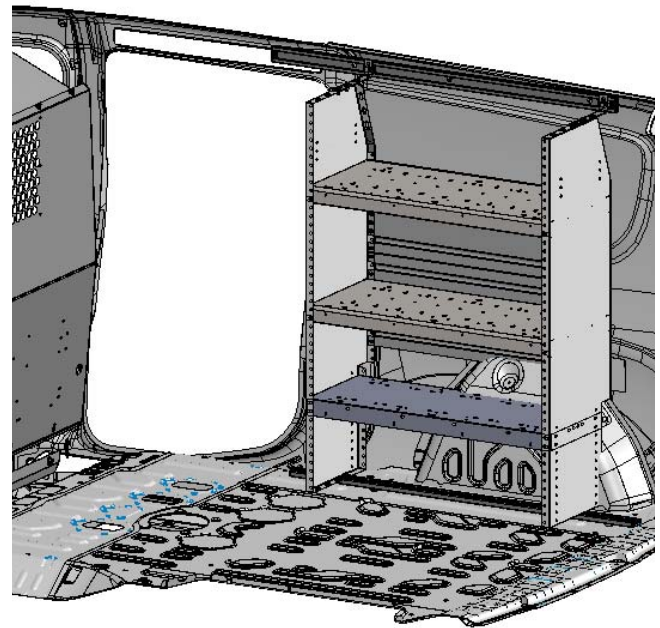
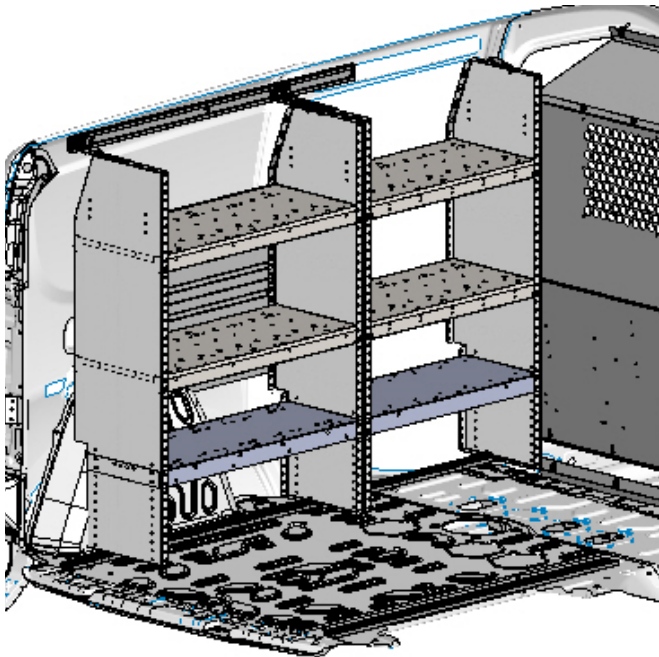


Introduction / Comments:

These instructions are for The Long Rail Kit and Short Rail Kit for the Dodge Promaster City Van. The Long or the Short rail Kit will work on either side of the van.

Note: It is advised that all fasteners used in this assembly and installation should be checked for tightness at the following intervals: @ 2-weeks and again @ 6-weeks of operation. This preventive maintenance step must be completed to ensure your Product gives you long service life.



**RKPMC, SHORT RAIL KIT, DODGE PRO MASTER CITY
RK72PMC, LONG RAIL KIT, DODGE PRO MASTER CITY**

- PRECAUTIONS -



CAUTION



**THE USE OF AIR IMPACT TOOLS CAN
OVER-TORQUE FASTENERS AND
CAUSE FASTENER FAILURE!**



CAUTION



**ALL INSTALLATION HOLES SHOULD BE SEALED
WITH SILICON OR BUTYL SEALANT TO PREVENT
EXHAUST FUMES FROM ENTERING THE VEHICLE!**



DANGER



**INSPECT FOR FUEL TANK, FUEL LINES, BRAKE LINES, HIGH
VOLTAGE BATTERIES AND ELECTRICAL LINES PRIOR TO
DRILLING TO AVOID DAMAGING CRITICAL VEHICLE SYSTEMS
OR INJURY TO INSTALLER DURING INSTALLATION PROCESS!**



CAUTION



**TO AVOID DAMAGING THE VEHICLE ALWAYS
USE DRILL STOPS WHEN DRILLING ANY IN-
STALLATION HOLES!**



- IMPORTANT WARRANTY REQUIREMENTS -

1. SUBSTITUTING ADRIAN STEEL SPECIFIED FASTENERS FOR ASSEMBLY AND/OR INSTALLATION WILL VOID YOUR PRODUCT WARRANTY.
2. ALL HOLES DRILLED INTO VEHICLE SHOULD HAVE THE RAW METAL EDGES SEALED WITH A SELF-ETCHING PRIMER TO RESIST CORROSION AND POTENTIAL FASTENER POINT FAILURE.
3. ALL FASTENERS USED IN THE INSTALLATION OF THIS PRODUCT SHOULD BE TIGHTENED TO THE TORQUE(S) SPECIFIED IN THESE INSTRUCTIONS.
4. THESE INSTRUCTIONS SHOULD BE KEPT WITH THE VEHICLE.

THE BASIC TOOLS NEEDED FOR MOST INSTALLATIONS



DRILL



DRILL BIT WITH
STOP



RATCHET, SOCKETS
AND/OR WRENCHES



SCREWDRIVERS



MEASURING TAPE

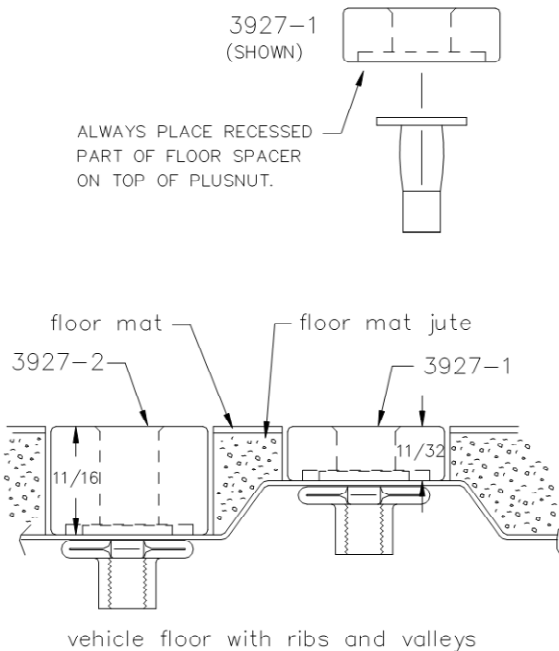
ADDITIONAL TOOLS MAY BE NEEDED FOR THIS INSTALLATION AND THEY WILL BE IDENTIFIED IN THE STEPS THAT FOLLOW.

If your vehicle contains carpet or a rubber floor mat you will need to prepare the mounting location. Position the product to be installed into the vehicle and once your are satisfied with the mounting locations, mark the mounting locations. Using a 1-3/16" diameter carpet cutter (P/N: 31183-0). Select the appropriate floor spacers as shown in the illustration. Set those aside for use later into the installation process.

Using the correct drill bit size for the selected plusnut, drill the mounting holes in the vehicle sheet metal to prepare for installing the plusnuts.

If you are thru-bolting at any of the locations simply drill a hole that is 1/16" larger than the bolt size(s) for those locations.

Once you have drilled the holes into the vehicle, the raw metal edges should be sealed using a self-etching primer to resist corrosion and potential fastener point failure.



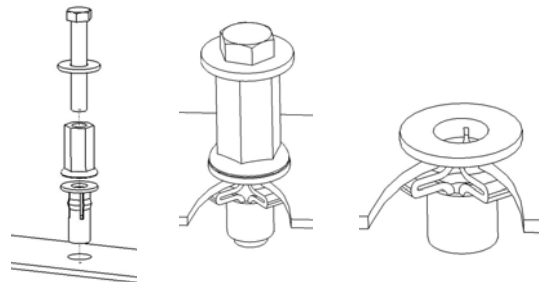
A PLUSNUT (RIVNUT) SETTING TOOL IS REQUIRED FOR PLUSNUT (RIVNUT) INSTALLATION AND IS NOT SUPPLIED WITH THIS KIT. OR USE AN AIR POWERED PLUSNUT SETTING GUN.

1/4-20UNC Plusnut (FAS0052) Use 3/8" dia. drill w/stop

FAS0080 SCREW, HXHD, 1/4-20UNCx2.00", G8
FAS0067 WASHER, FLAT, 1/4"ID
22200-0 PLUSNUT TOOL

5/16-18UNC Plusnut (FAS0091) Use 1/2" dia. drill w/stop

FAS0095 SCREW, HXHD, 5/16-18UNCx2.00", G8
FAS0086 WASHER, FLAT, 5/16"ID
22200-0 PLUSNUT TOOL

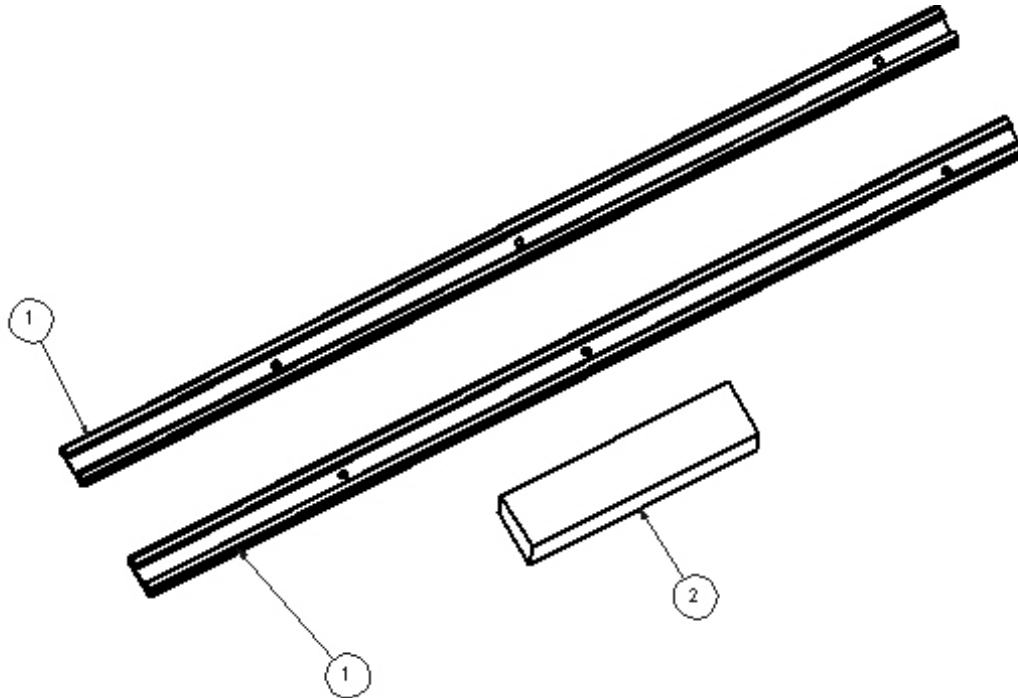


Place barrel of the plusnut body in sheet metal thru hole until flange is flush with sheet metal.

Using a 9/16" combination wrench of plusnut tool body and a second hand wrench, ratchet, or air tool, rotate the hex bolt head CW to draw plus nut flanges up (set the plusnut).

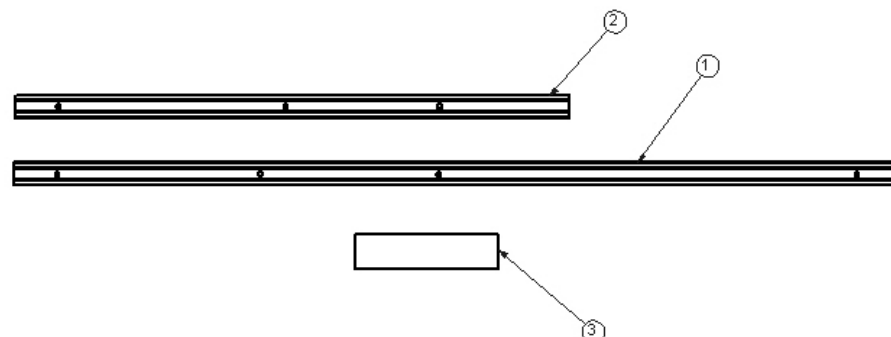
**RKPMC
SHORT RAIL KIT
DODGE PROMASTER CITY, 2015**

ITEM NO.	PART NUMBER	DESCRIPTION	RKPMC/QTY.
1	48399	RAIL 45.00" SHORT, RKPMC	2
2	HDW48502	HARDWARE KIT, RKPMC	1



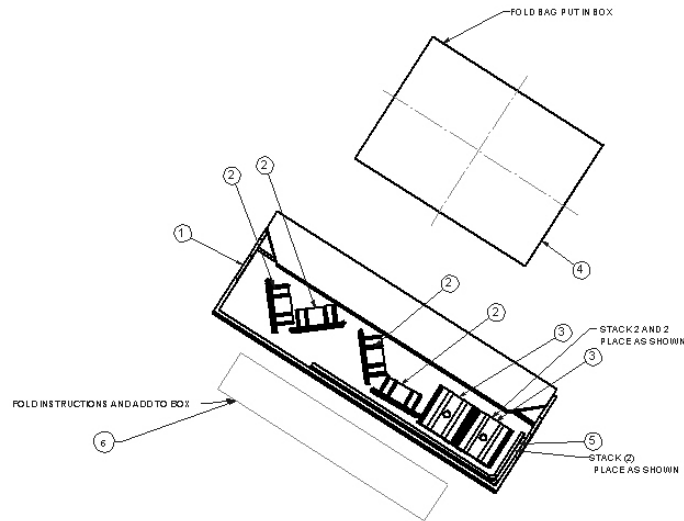
**RK72PMC
LONG RAIL KIT
DODGE PROMASTER CITY, 2015**

ITEM NO.	PART NUMBER	DESCRIPTION	RK72PMC/QTY.
1	48398	72" LONG RAIL, RK72PMC	1
2	48399	RAIL 45.00" SHORT, RKPMC	1
3	HDW48503	HARDWARE KIT, RK72PMC	1



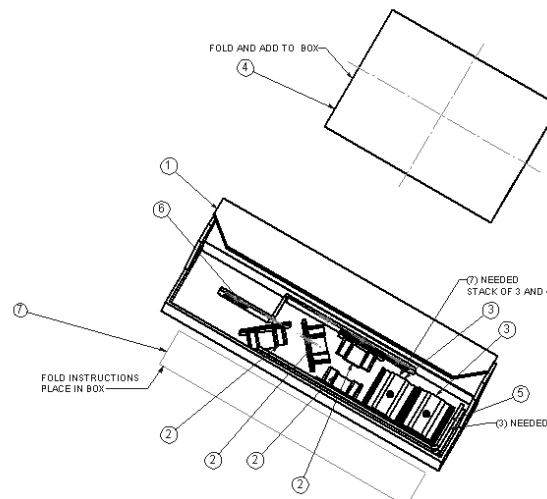
HDW48502 HARDWARE KIT

ITEM NO.	PART NUMBER	DESCRIPTION	HDW48502/QTY.
1	CRTHDWRK	CARTON,HARDWARE,AD RAIL KIT	1
2	36496-0	END CAP	4
3	35335-0	SLIDE	4
4	BAG48506	FAS BAG,RK72PMC	1
5	45339-G	59 END PANEL LOW MTG BRACKET	2
6	48639	INSTALL INSTRUC, RKPMC	1



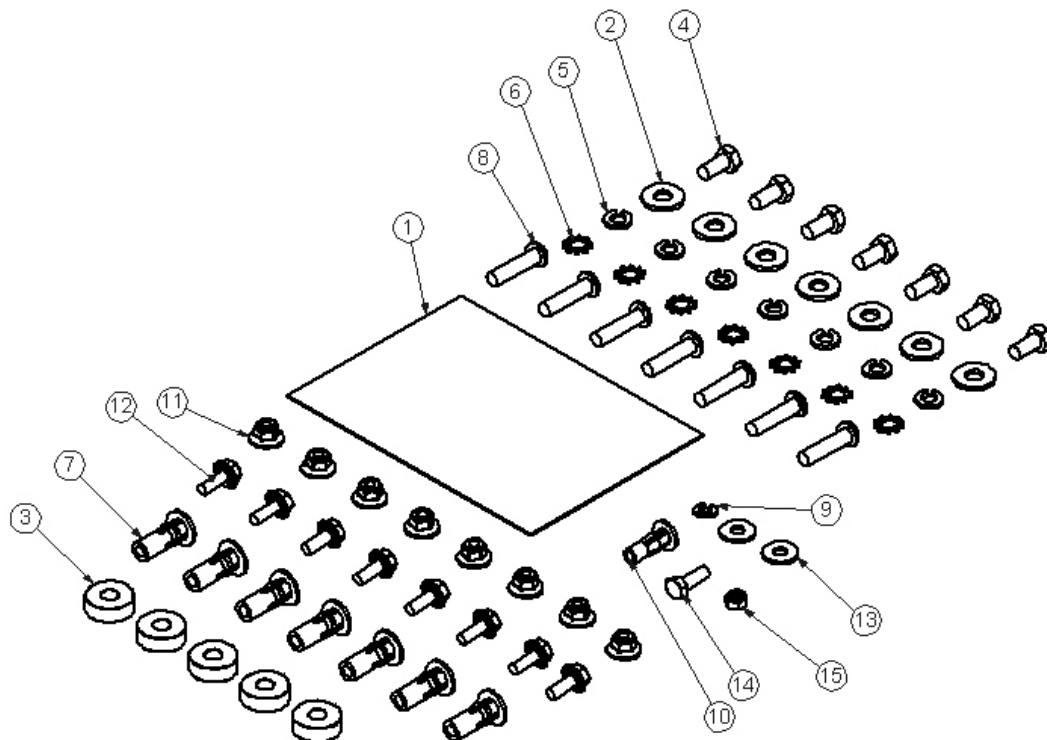
HDW48503 HARDWARE KIT

ITEM NO.	PART NUMBER	DESCRIPTION	HDW48503/QTY.
1	CRTHDWRK	CARTON,HARDWARE,AD RAIL KIT	1
2	36496-0	END CAP	4
3	35335-0	SLIDE	7
4	BAG48506	FAS BAG,RK72PMC	1
5	45339-G	59 END PANEL LOW MTG BRACKET	3
6	48504-G	FRONT UPPER BRACKET, RK72PMC	1
7	48639	INSTALL INSTRUC,RKPMC	1

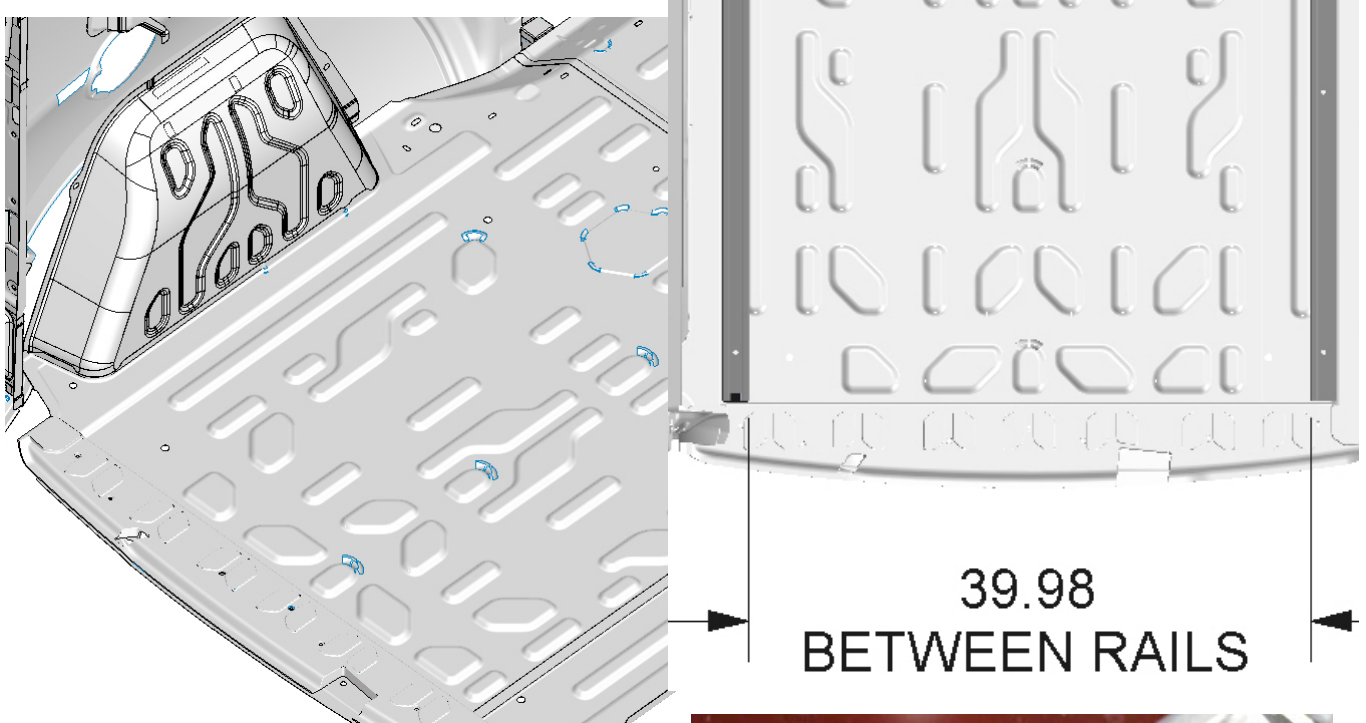


BAG48506
FAS BAG, RK72PMC

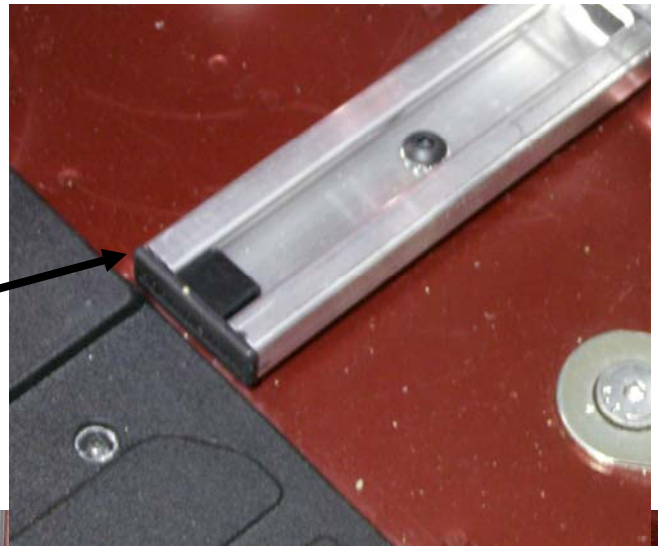
ITEM NO.	PART NUMBER	DESCRIPTION	BAG48506/QTY.
1	BAG0507-A	5" x 7" 3MIL AUTO BAG	1
2	FAS0086	WASHER, FLAT USS 5/16 IP	7
3	Q3927-1	Floor Spacer Short	5
4	FAS0165	Screw, Hex Hd, 5/16-18x.625	7
5	FAS0098	Washer, Lock, Split, 5/16, Zinc Plate	7
6	FAS0085	Washer, Lock, Ext. Tooth, 5/16	7
7	FAS0091	Plusnut, 5/16	7
8	FAS0708	Screw, Button Hd Hex Soc, 5/16-18X1.25, BLK OXIDE	7
9	FAS0060	Washer, Lock, Split, 1/4	1
10	FAS0052	Plusnut, 1/4	1
11	FAS0055	Nut, Hex Flange, Nylock 1/4-20	8
12	FAS0018	SCREW, HH SFLNG 1/4-20X.62 IP	8
13	FAS0067	Washer, Flat, 1/4	2
14	FAS0063	Screw, Hex Hd, 1/4-20x0.75 Zn Plate, Grade 5	1
15	FAS0569	NUT, HEX NLK M6X1SS	1



FLOOR RAIL 48398 LONG FLOOR RAIL RK72PMC



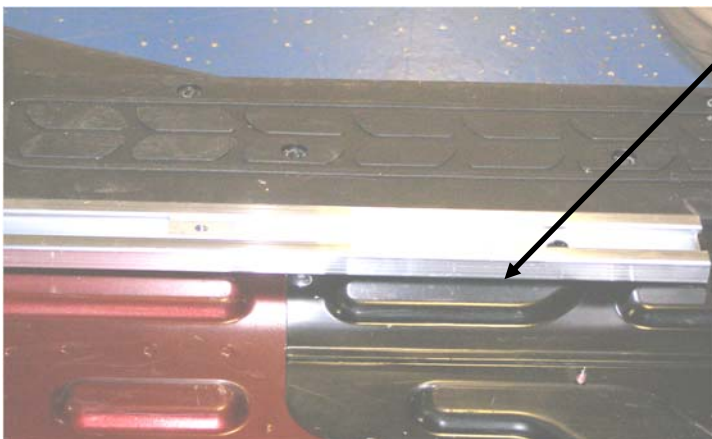
PLACE RAIL END CAPS ON REAR END OF
FLOOR RAILS .
LOCATE RAILS CAPS FLUSH WITH REAR
FLOOR TRIM



FLOOR RAIL 48398 LONG FLOOR RAIL RK72PMC



48398 LONG RAIL USE (3) SHORT SPACERS AS SHOWN.
RAIL WILL SIT ON EMBOSS SEE BELOW; ADD (4) 35335-0 SLIDES IN RAIL
BEFORE ADDING THE (2) END CAPS 36496-0 .
MARK AND DRILL FOR FAS00 91 5/16 PLUSNUTS (4) PLACES
FASTEN TO FLOOR USING (4) FAS0708 5/16 SCREWS AND
(4) FAS0085 5/16 LOCK WASHERS



SET END OF RAIL ON EMBOSS
NO SPACER USED HERE

RKPMC FLOOR RAIL 48399 SHORT FLOOR RAIL



48398 SHORT RAIL USE (3) SHORT SPACERS AS SHOWN.
LOCATE FROM FLOOR TRIM AS PREVIOUSLY SHOWN.
ADD (2) 35335-0 SLIDES IN RAIL
BEFORE ADDING THE (1) END CAP 36496-0 .
MARK AND DRILL FOR FAS00 91 5/16 PLUSNUTS (3) PLACES
FASTEN TO FLOOR USING (3) FAS0708 5/16 SCREWS AND
(3) FAS0085 5/16 LOCK WASHERS

**IF VEHICLE COMES WITH A UPPER TRIM PACKAGE
ABOVE SLIDING SIDE DOORS
REMOVE IT AND STORE**

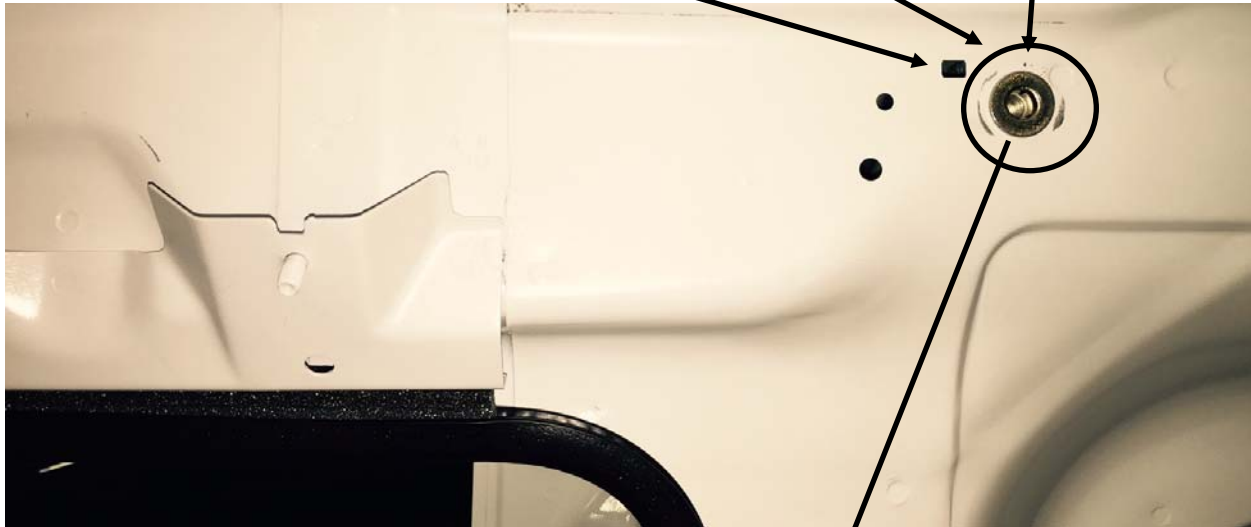
REMOVE (2) SCREWS



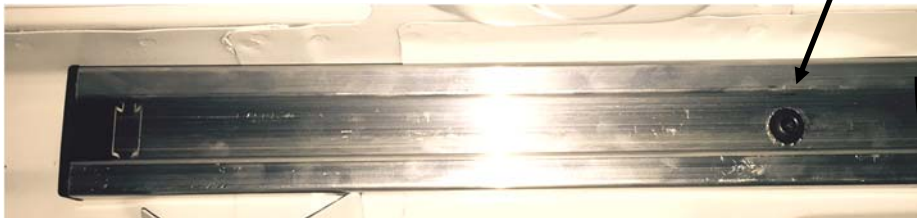
**UPPER RAIL EITHER SIDE
48399 RAIL 45.00" SHORT
THIS RAIL IS ALSO USED ON THE FLOOR FOR THE
RKPMC SHORT RAIL KIT**

DRILL EXISTING HOLE FOR PLUSNUT
REF SQUARE HOLE

HOLE SHOWN WITH
PLUSNUT INSTALLED

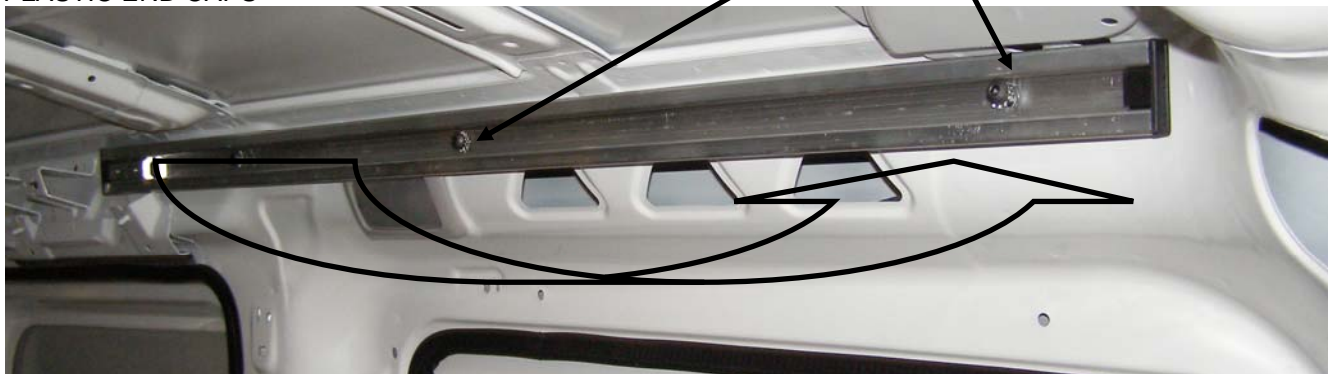


LOOSELY INSTALL RAIL
ROTATE AND MARK OTHER TWO PLUSNUT HOLES



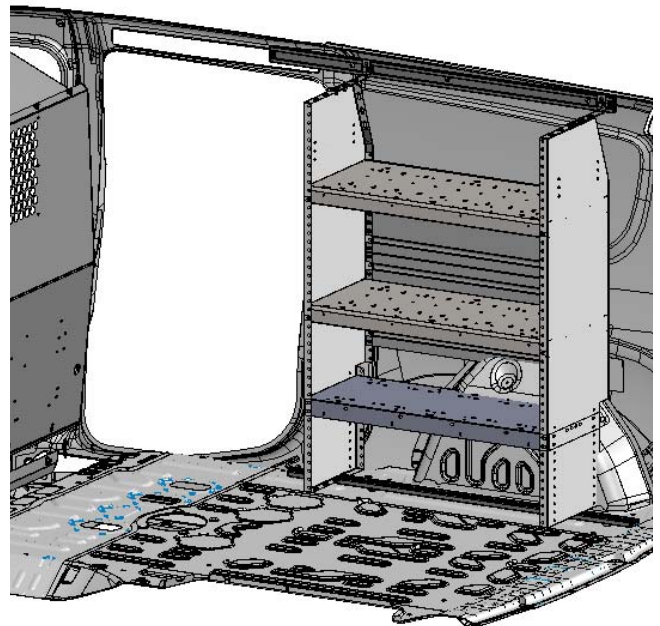
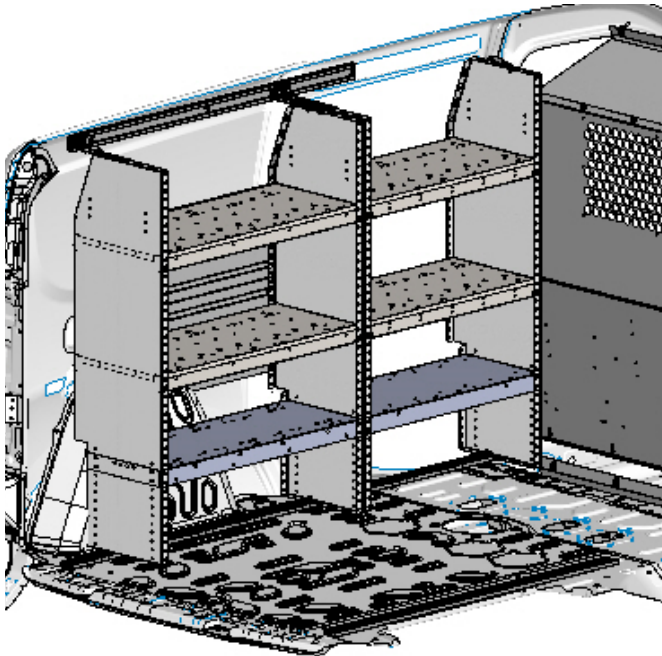
USE SMALL SPACER UNDER RAIL, 2 PLACES,
ATTACH 3 PLACES WITH
Fas0708 SCREW BUTTON HEAD HEX SOC 5/16-18 X 1.25
Fas0085 5/16 WASHER LOCK EXT TOOTH.
ADD (2) 35335-0 SLIDES BEFORE ADDING (2) 36496-0
PLASTIC END CAPS

SMALL SPACERS



RKPMC, SHORT RAIL KIT, DODGE PRO MASTER CITY RK72PMC, LONG RAIL KIT, DODGE PRO MASTER CITY

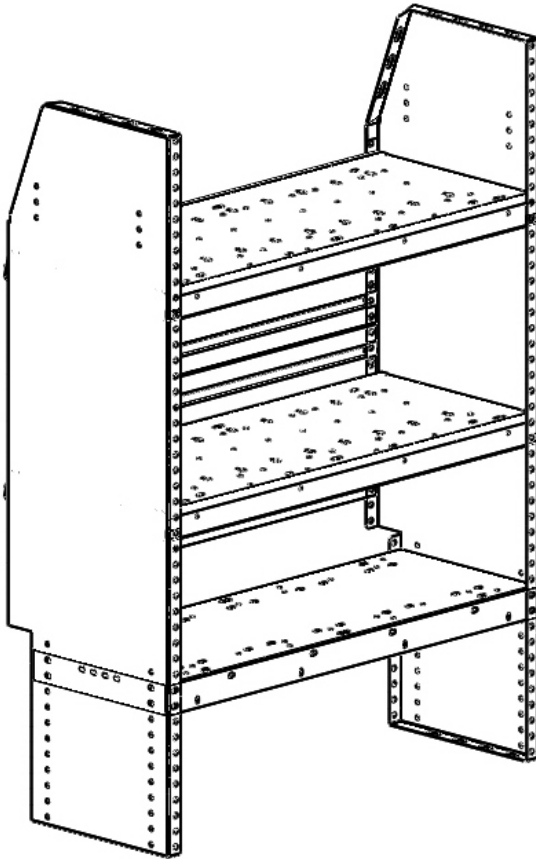
YOUR INSTALLATION IS NOW COMPLETE



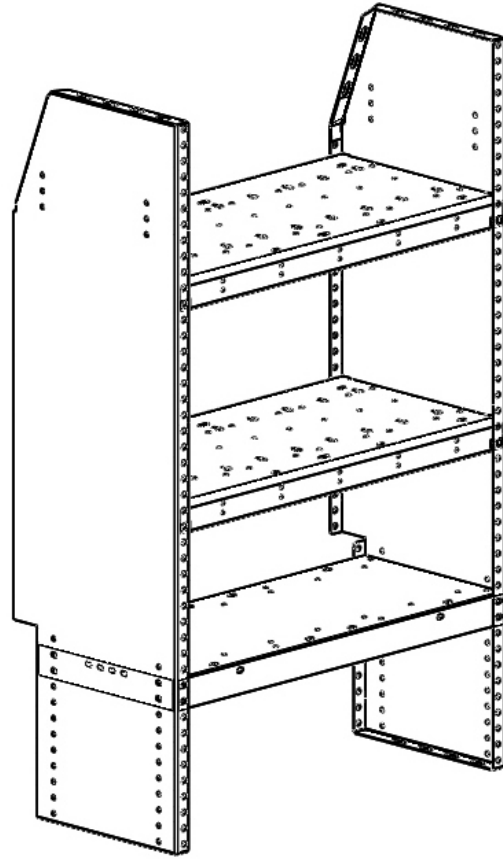
**DOUBLE CHECK ALL FASTENER LOCATIONS TO BE SURE THAT ALL
FASTENERS ARE TIGHTENED TO SPECIFICATIONS.
YOUR INSTALLATION IS NOW COMPLETE!
STOW THIS COPY IN THE VEHICLE FOR FUTURE REFERENCES!**

**SEE NEXT FEW PAGES FOR MOUNTING AD32PMC AND AD28PMC
SHELVING TO THE RAILS IN THE VEHICLE**

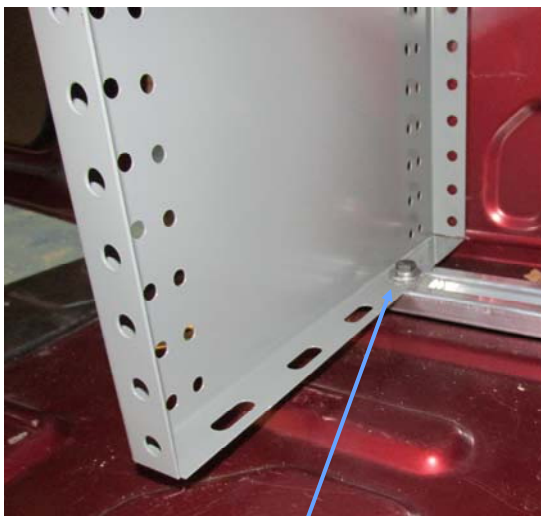
THESE PAGES ARE FROM INSTALL INSTRUCTIONS, 48332 FOR
AD32PMC, AND AD28PMC



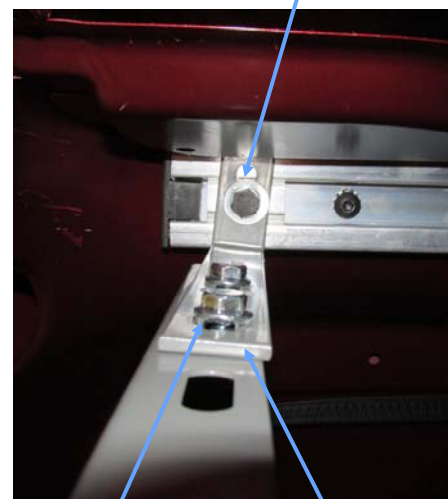
AD32PMC



AD28PMC



FAS0165
FAS0098
FAS0086

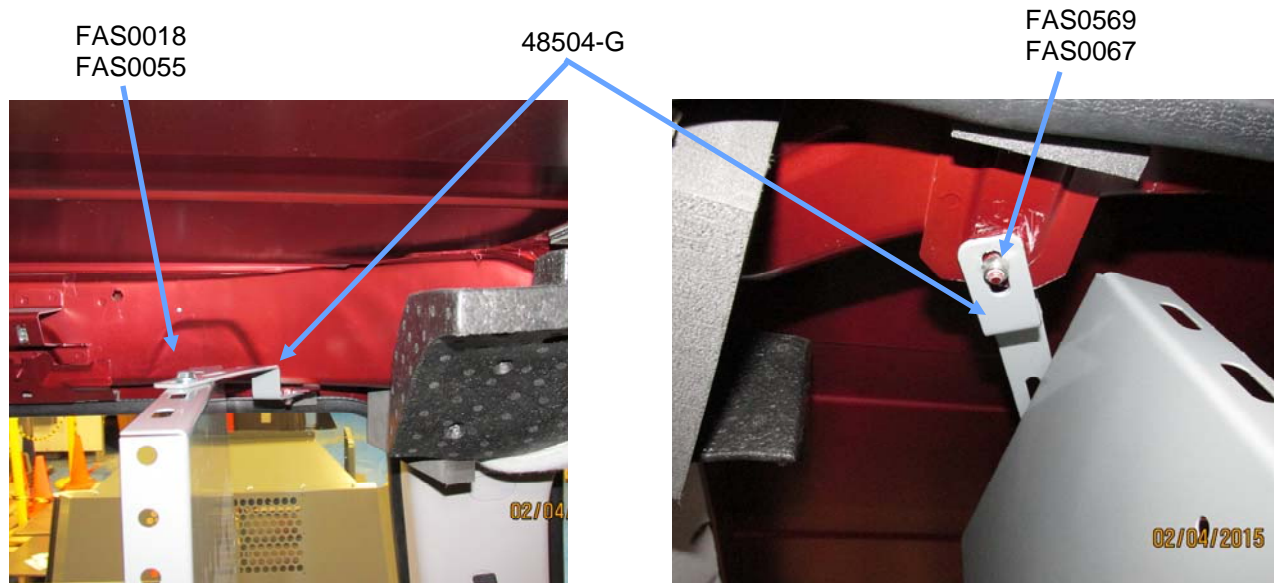


FAS0165
FAS0098
FAS0086

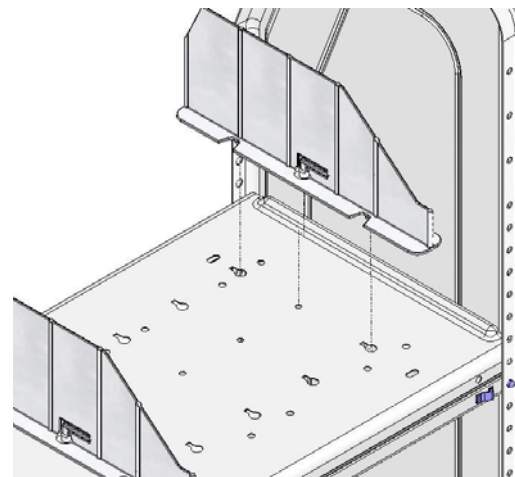
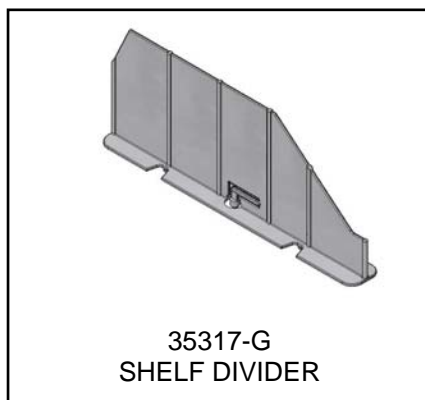
FAS0018
FAS0055

45339-G

Install front upper mounting bracket (48504-G) for forward shelving units to top of end panel using one (1) FAS0018 and one (1) FAS0055. Secure opposing end of bracket to OEM threaded weld stud using one (1) FAS0569 M6x1 SS Nylock Nut and one (1) FAS0067 flat washer.



Step 06 (Optional) Install optional dividers, 35317-G, into slotted holes. Order dividers separately for each shelving unit.



To install dividers onto shelves, insert the (2) outside pins into the corresponding holes and slide back towards the rear of the shelving unit until the middle pin snaps into the middle hole. To remove the divider pull-up on the middle pin's tab and slide toward the front of the shelf.

DOUBLE CHECK ALL FASTENERS LOCATIONS TO BE SURE THAT ALL FASTENERS ARE TIGHTENED TO SPECIFICATIONS.

**YOUR INSTALLATION IS NOW COMPLETE!
STOW THIS COPY IN THE VEHICLE FOR FUTURE REFERENCES!**