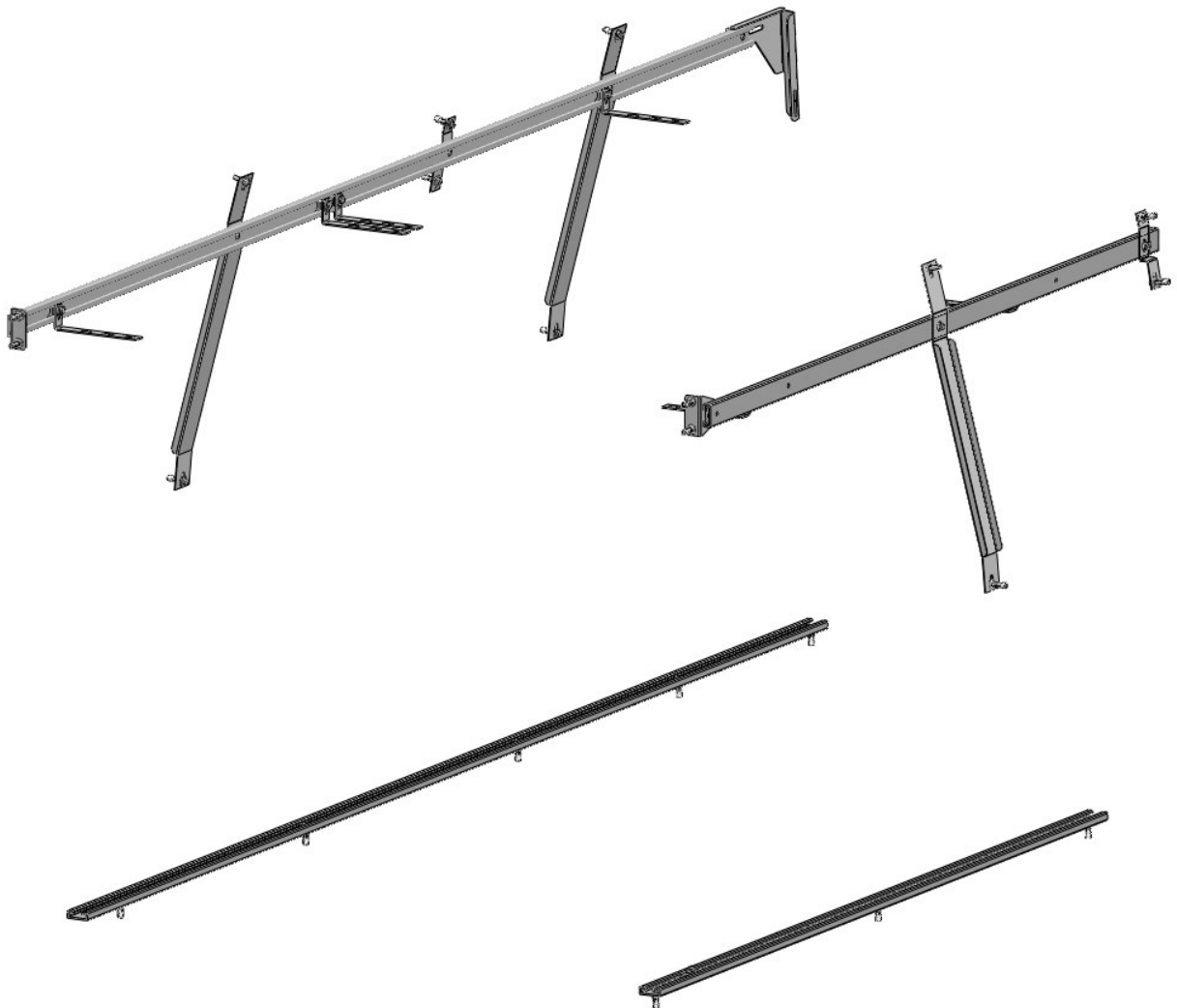


**Introduction / Comments:**

This rail kit is designed to fit in your 148 wheel base Ford Transit, Standard roof.

**Note:**

It is advised that all fasteners used in this assembly and installation should be checked for tightness at the following intervals: @ 2-weeks and again @ 6-weeks of operation. This preventive maintenance step must be completed to ensure your Partition gives you long service life.

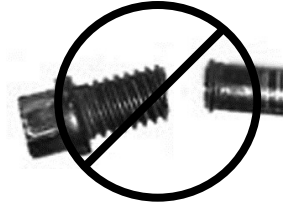


**RK148FSTS  
RAIL KIT, 148 WB  
FORD TRANSIT**

## - PRECAUTIONS -





 **CAUTION**   
**THE USE OF AIR IMPACT TOOLS CAN  
OVER-TORQUE FASTENERS AND  
CAUSE FASTENER FAILURE!**





 **CAUTION**   
**ALL INSTALLATION HOLES SHOULD BE SEALED  
WITH SILICON OR BUTYL SEALANT TO PREVENT  
EXHAUST FUMES FROM ENTERING THE VEHICLE!**



 **DANGER**   
**INSPECT FOR FUEL TANK, FUEL LINES, BRAKE LINES, HIGH  
VOLTAGE BATTERIES AND ELECTRICAL LINES PRIOR TO  
DRILLING TO AVOID DAMAGING CRITICAL VEHICLE SYSTEMS  
OR INJURY TO INSTALLER DURING INSTALLATION PROCESS!**



 **CAUTION**   
**TO AVOID DAMAGING THE VEHICLE ALWAYS USE DRILL  
STOPS WHEN DRILLING ANY INSTALLATION HOLES!  
ADRIAN AVAILABLE PART #'S 31121-0 (1/2" DEEP),  
31122-0 (3/4" DEEP)**



## - IMPORTANT WARRANTY REQUIREMENTS -

1. SUBSTITUTING ADRIAN STEEL SPECIFIED FASTENERS FOR ASSEMBLY AND/OR INSTALLATION WILL VOID YOUR PRODUCT WARRANTY.
2. ALL HOLES DRILLED INTO VEHICLE SHOULD HAVE THE RAW METAL EDGES SEALED WITH A SELF-ETCHING PRIMER TO RESIST CORROSION AND POTENTIAL FASTENER POINT FAILURE.
3. ALL FASTENERS USED IN THE INSTALLATION OF THIS PRODUCT SHOULD BE TIGHTENED TO THE TORQUE(S) SPECIFIED IN THESE INSTRUCTIONS.
4. THESE INSTRUCTIONS SHOULD BE KEPT WITH THE VEHICLE.

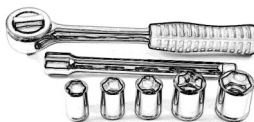
### THE BASIC TOOLS NEEDED FOR MOST INSTALLATIONS



DRILL



DRILL BIT WITH  
STOP



RATCHET, SOCKETS  
AND/OR WRENCHES



SCREWDRIVERS



MEASURING TAPE

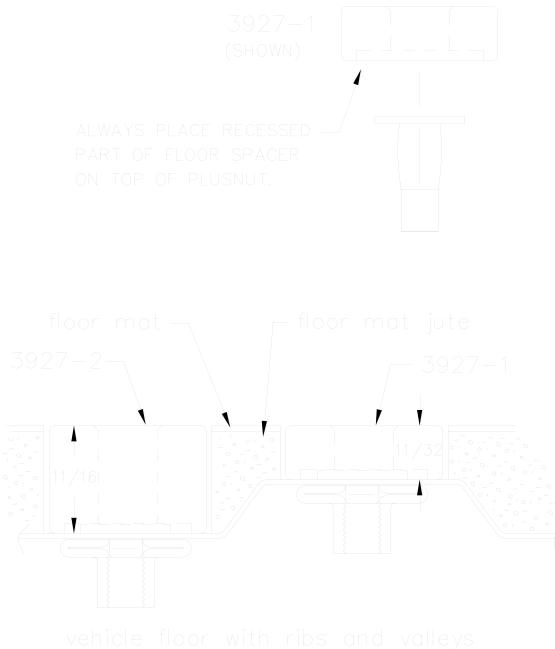
ADDITIONAL TOOLS MAY BE NEEDED FOR THIS INSTALLATION AND THEY WILL BE IDENTIFIED IN THE STEPS THAT FOLLOW.

If your vehicle contains carpet or a rubber floor mat you will need to prepare the mounting location. Position the product to be installed into the vehicle and once you are satisfied with the mounting locations, mark the mounting locations. Using a 1-3/16" diameter carpet cutter (P/N: 31183-0). Select the appropriate floor spacers as shown in the illustration. Set those aside for use later into the installation process.

Using the correct drill bit size for the selected plusnut, drill the mounting holes in the vehicle sheet metal to prepare for installing the plusnuts.

If you are thru-bolting at any of the locations simply drill a hole that is 1/16" larger than the bolt size(s) for those locations.

Once you have drilled the holes into the vehicle, the raw metal edges should be sealed using a self-etching primer to resist corrosion and potential fastener point failure.



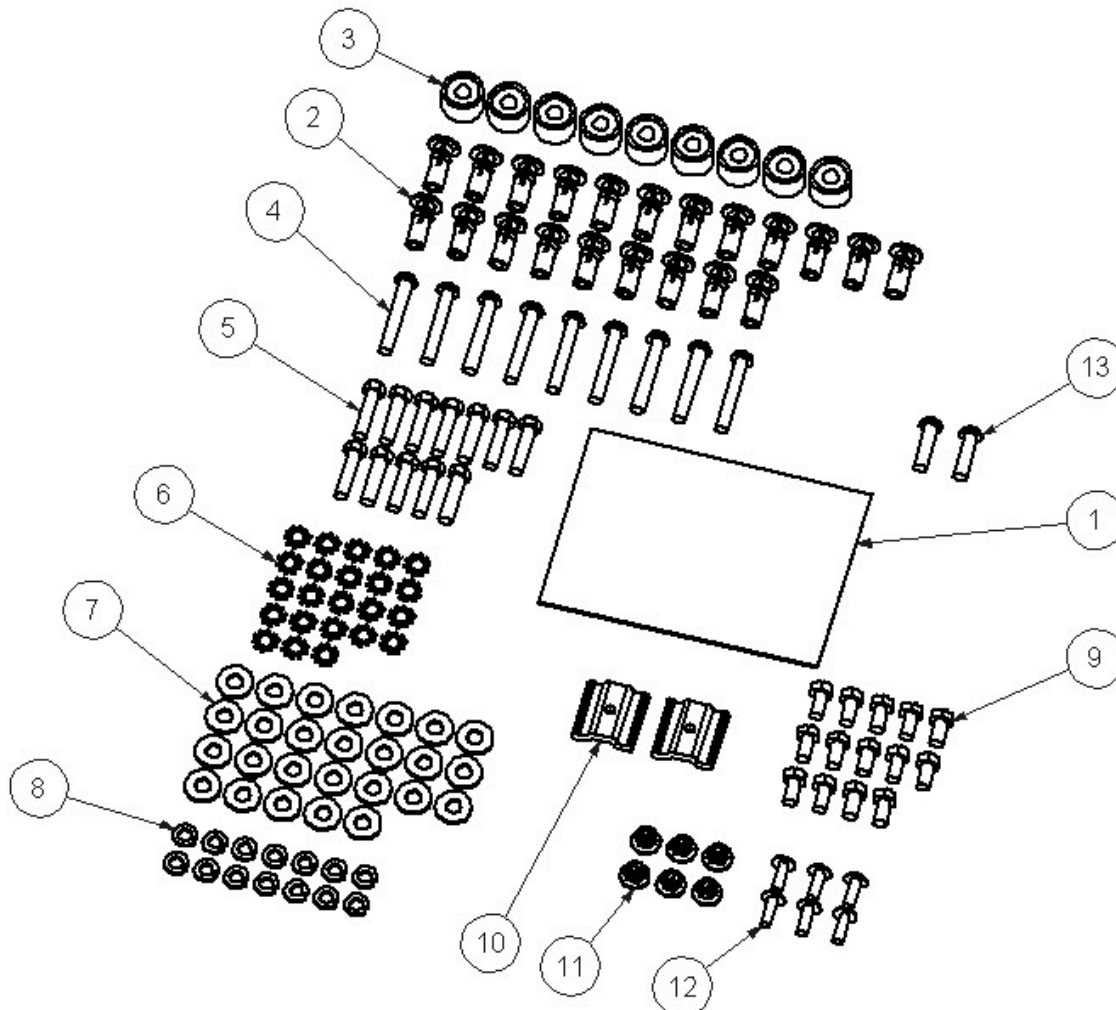
A PLUSNUT (RIVNUT) SETTING TOOL IS REQUIRED FOR PLUSNUT (RIVNUT) INSTALLATION AND IS NOT SUPPLIED WITH THIS KIT. OR USE AN AIR POWERED PLUSNUT SETTING GUN.

<p><u>1/4-20UNC Plusnut (FAS0052) Use 3/8" dia. drill w/stop</u>                  FAS0080 SCREW, HXHD, 1/4-20UNCx2.00", G8                  FAS0067 WASHER, FLAT, 1/4"ID                  22200-0 PLUSNUT TOOL</p>	
<p><u>5/16-18UNC Plusnut (FAS0091) Use 1/2" dia. drill w/stop</u>                  FAS0095 SCREW, HXHD, 5/16-18UNCx2.00", G8                  FAS0086 WASHER, FLAT, 5/16"ID                  22200-0 PLUSNUT TOOL</p>	

Place barrel of the plusnut body in sheet metal thru hole until flange is flush with sheet metal.  
 Using a 9/16" combination wrench of plusnut tool body and a second hand wrench, ratchet, or air tool, rotate the hex bolt head CW to draw plus nut flanges up (set the plusnut).

## Assembly and Installation Fastener Identification Sheet ( BAG45340)

ITEM NO.	PART NUMBER	DESCRIPTION	QTY.
1	BAG0507-A	5" x 7" 3MIL AUTOBAG	1
2	FAS0091	Plusnut, 5/16	21
3	03927-2	Tall Floor Spacer	9
4	FAS0048	Screw, Button Hd Hex Soc, 5/16-18X 2, BLK OXIDE	9
5	FAS0093	Screw, Hex Hd, 5/16-18x1.25	12 </td
6	FAS0085	Washer, Lock, Ext. Tooth, 5/16	23
7	FAS0086	WASHER,FLAT USS 5/16 ZP	26
8	FAS0098	Washer, Lock, Split, 5/16, Zinc Plate	14
9	FAS0165	Screw, Hex Hd, 5/16-18x.625	14
10	35335-0	SLIDE	2
11	FAS0055	Nut, Hex Flange,Nylock 1/4-20	6
12	FAS0062	Screw, Truss Hd. Ph, 1/4-20x0.75	6
13	FAS0741	Screw, Button Hd Hex Soc, M8-1.25 X 30	2



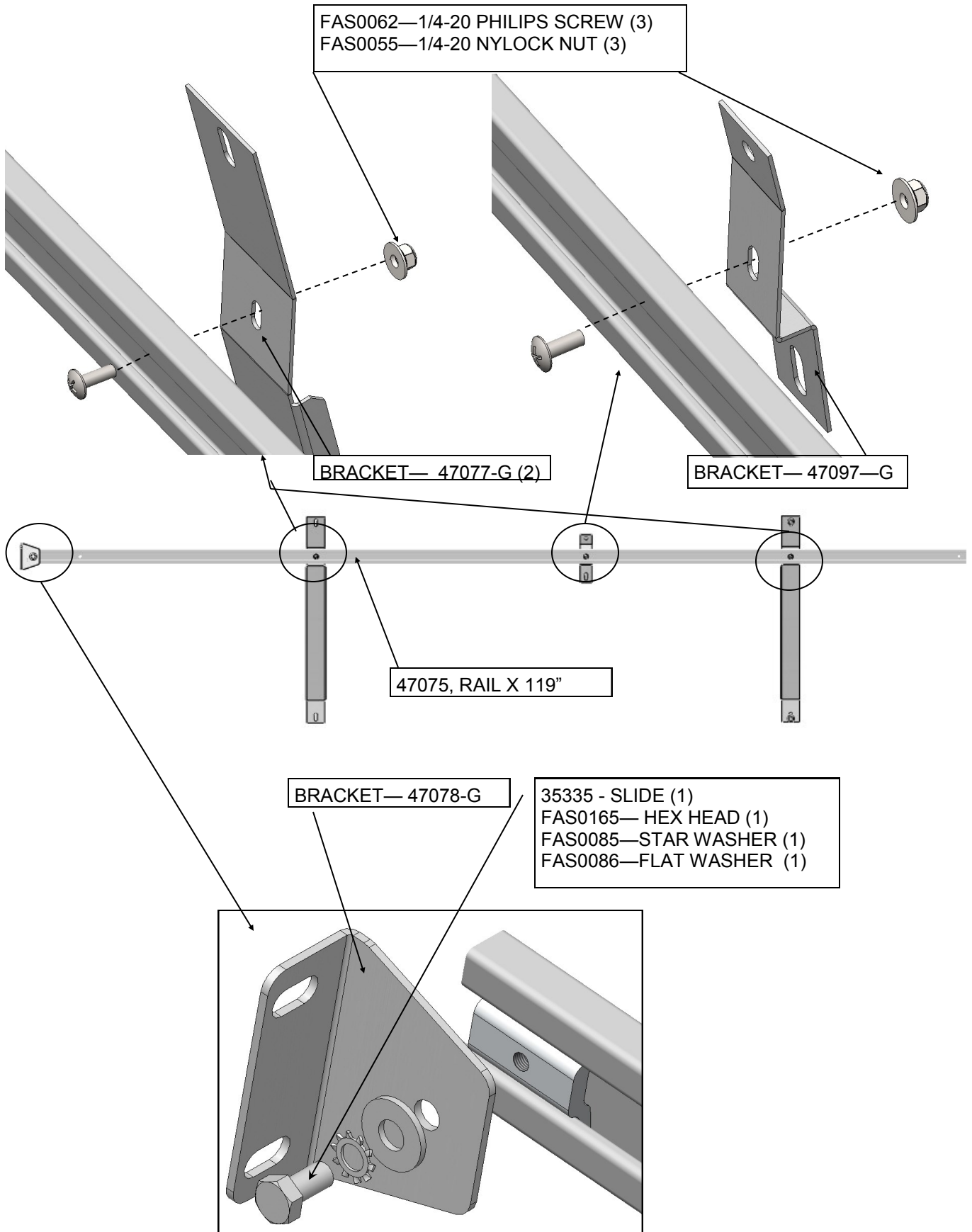
**STEP 1A —VEHICLES WITH OEM LINER KITS—NEED TO REMOVE UPPER PANELS ON THE STREET AND CURB SIDE.**



GENERIC PICTURE OF VEHICLE AND LINER KIT.

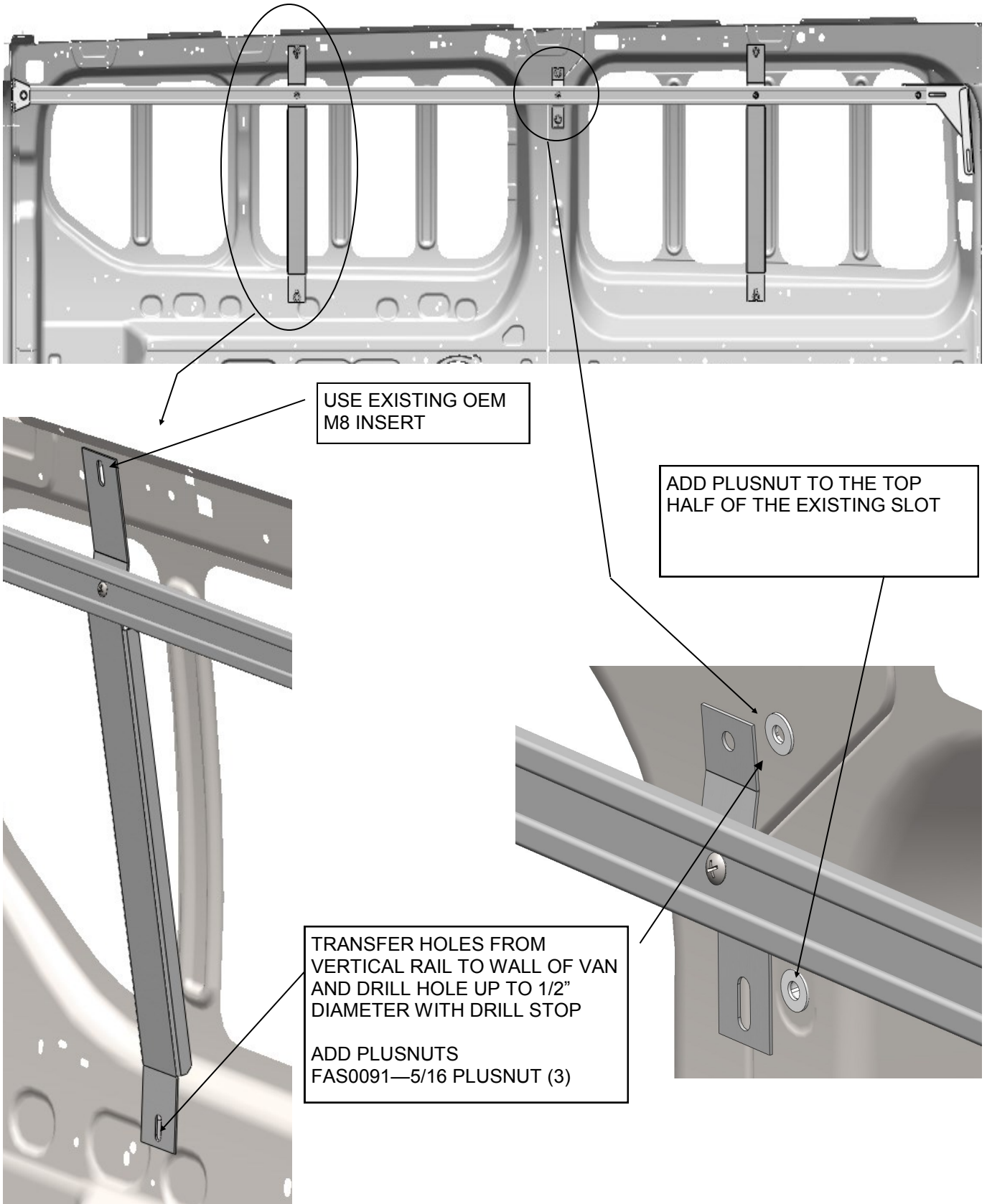
**STEP 1B STREET SIDE UPPER RAIL, RAIL ASSEMBLY**

- ASSEMBLE RAIL BEFORE PUTTING IN VEHICLE, **DO NOT FULLY TIGHTEN**



**STEP 1C STREET SIDE UPPER RAIL**

- INSERT RAIL ASSEMBLY INTO VEHICLE, TRANSFER HOLES TO ADD PLUSNUTS



USE EXISTING OEM  
M8 INSERT

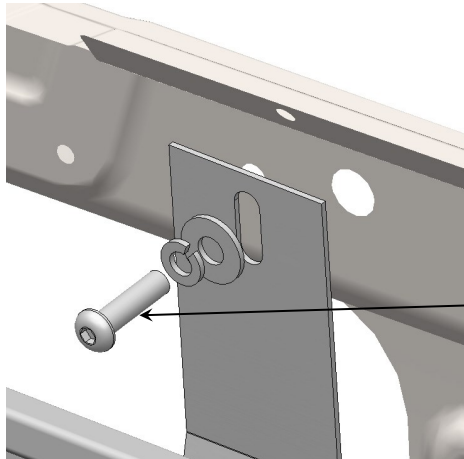
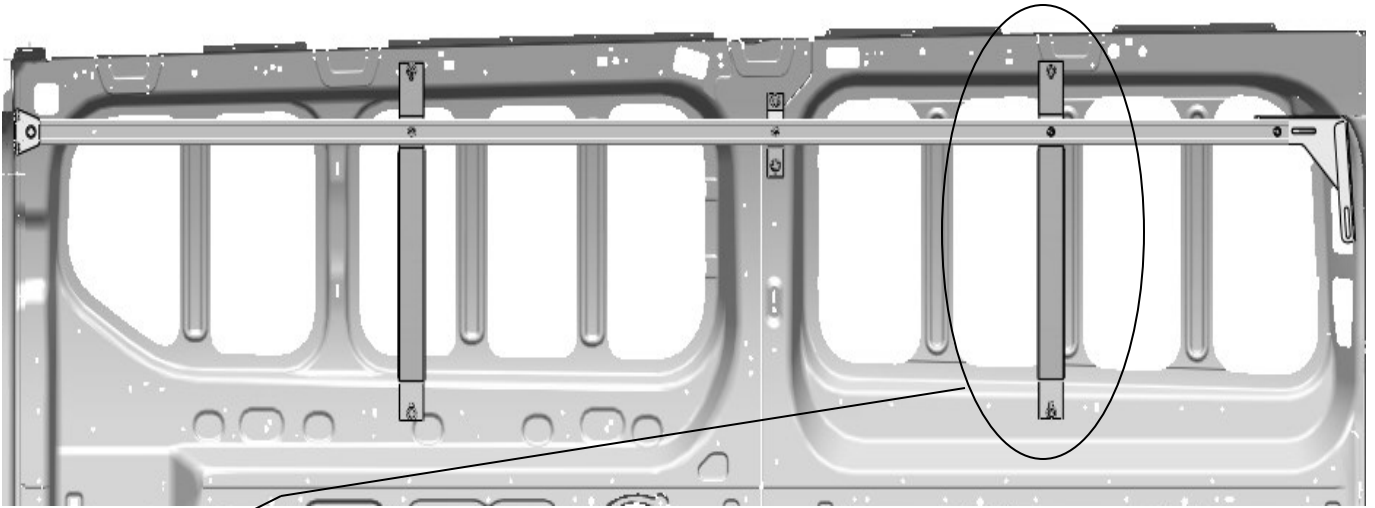
ADD PLUSNUT TO THE TOP  
HALF OF THE EXISTING SLOT

TRANSFER HOLES FROM  
VERTICAL RAIL TO WALL OF VAN  
AND DRILL HOLE UP TO 1/2"  
DIAMETER WITH DRILL STOP

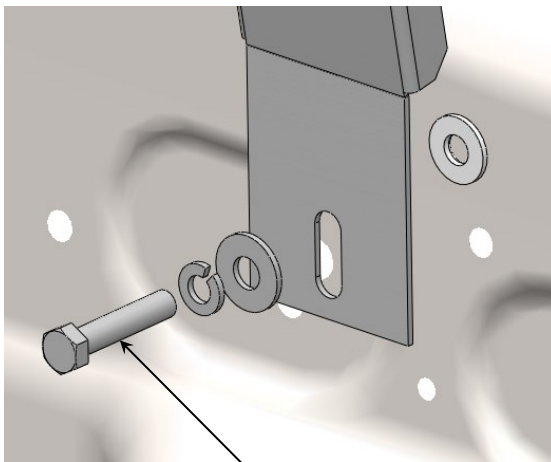
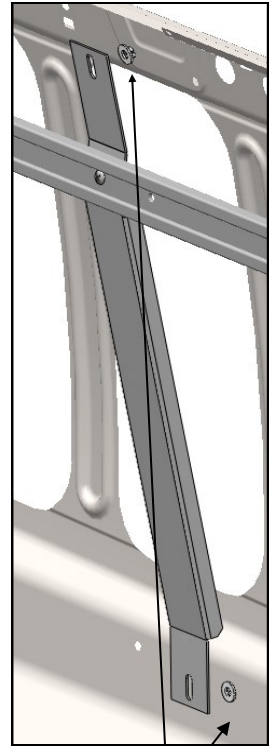
ADD PLUSNUTS  
FAS0091—5/16 PLUSNUT (3)

**STEP 1D STREET SIDE UPPER RAIL**

- INSERT RAIL ASSEMBLY INTO VEHICLE, TRANSFER HOLES TO ADD PLUSNUTS



FAS0741— M8 1.25 BUTTON SCREW (1)  
FAS0098—LOCK WASHER (1)  
FAS0086—FLAT WASHER (1)

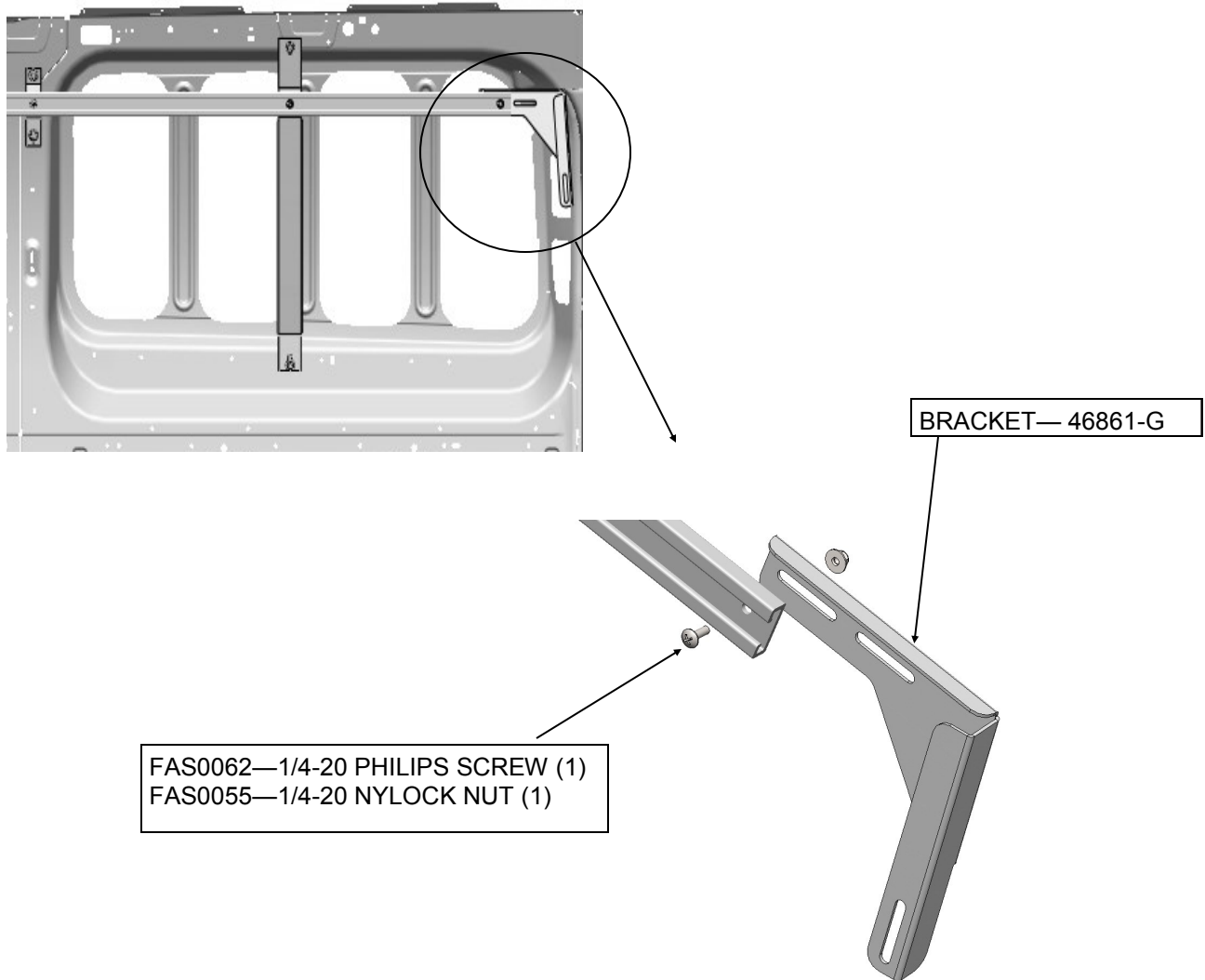


FAS0093— HEX HEAD (5)  
FAS0098—LOCK WASHER (5)  
FAS0086—FLAT WASHER (5)

TRANSFER HOLES  
OPEN HOLE UP TO 1/2" DIA  
WITH DRILL STOP  
ADD PLUSNUTS  
FAS0091—5/16 PLUSNUT (2)

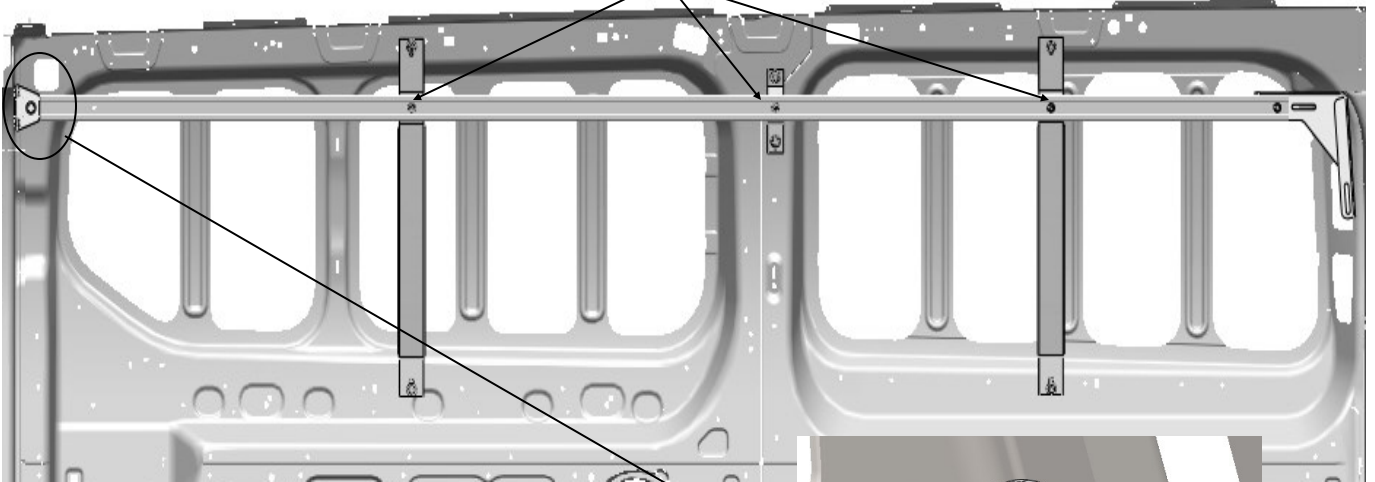


**STEP 1E - INSTALLATION OF STREET SIDE UPPER RAIL**

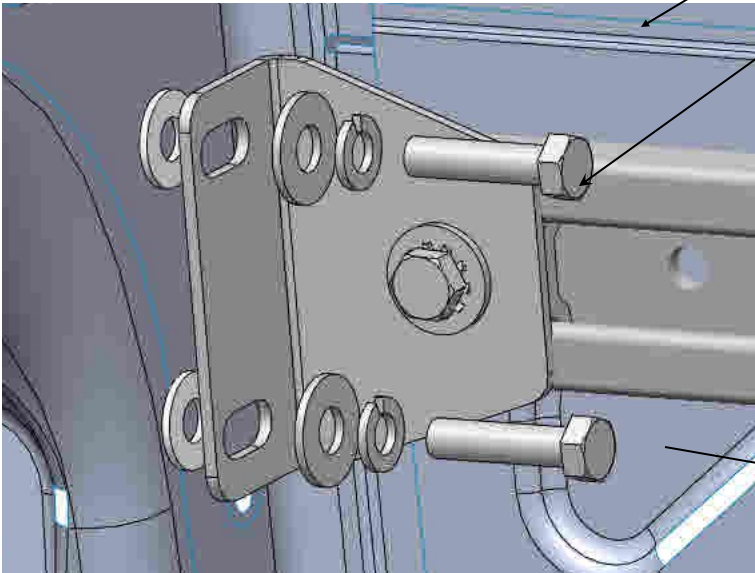
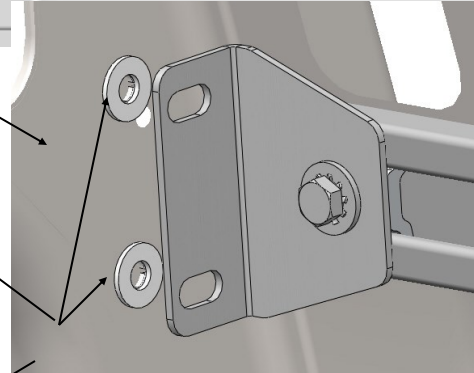


### STEP 1F - FINAL INSTALLATION OF STREET SIDE UPPER RAIL

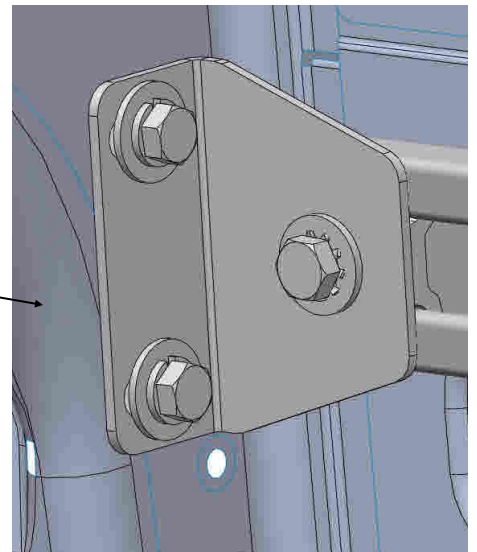
MAKE SURE THE RAIL IS STRAIGHT AND TIGHTEN TO AN APPROXIMATE HEIGHT OF 47.25" FROM THE FLOOR TO THE BOTTOM OF THE RAIL.



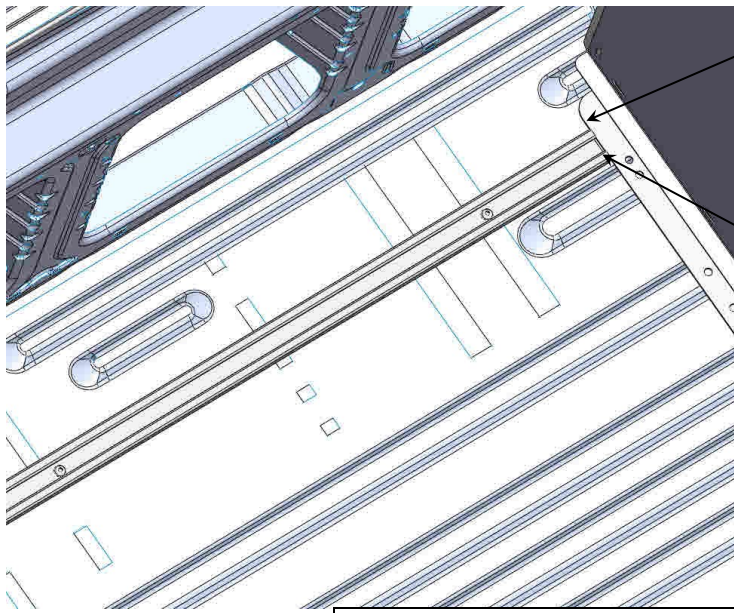
TRANSFER HOLES  
OPEN HOLE UP TO 1/2" DIA  
WITH DRILL STOP  
ADD PLUSNUTS  
FAS0091—5/16 PLUSNUT (2)



FAS0093— HEX HEAD (2)  
FAS0098—LOCK WASHER (2)  
FAS0086—FLAT WASHER (2)



**STEP 2 - ADD STREET SIDE FLOOR RAIL WITH ADRIAN PARTITION**

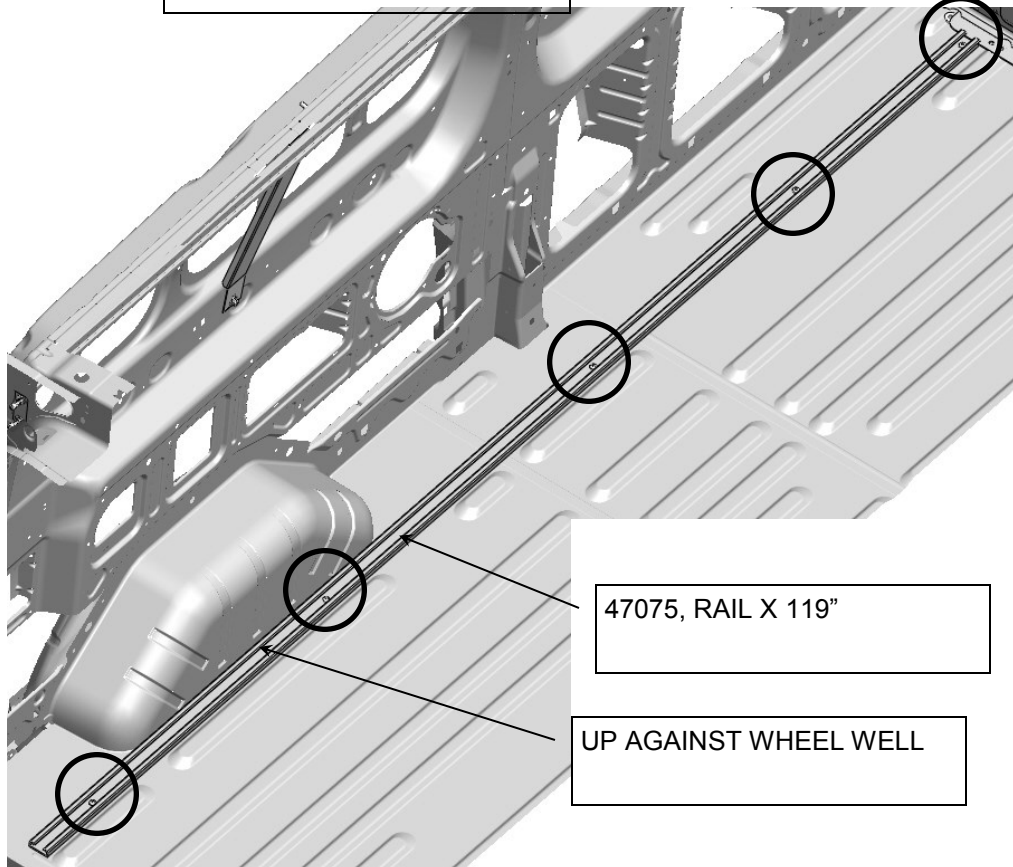
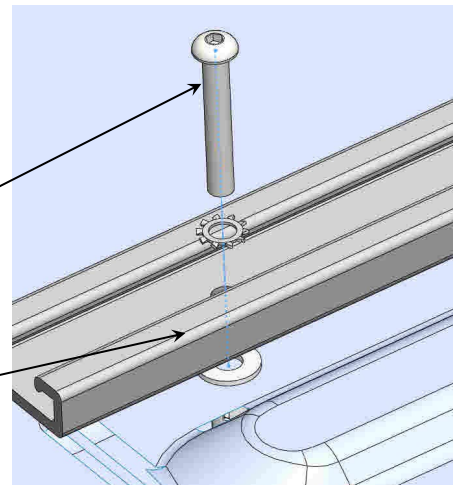


**INSTALLED  
ADRIAN PARTITION  
FOOTER RAIL.**

TOUCHING TO  
APPROXIMATELY 1/8" AWAY  
FROM FOOTER RAIL

FAS0091—PLUSNUT (5)  
FAS0048— BUTTON HD (5)  
FAS0085—STAR WASHER (5)

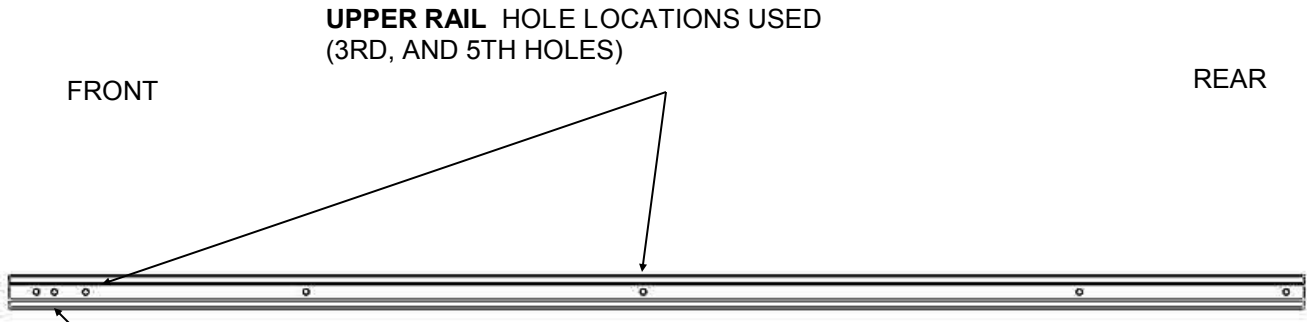
WITH FLOORING USE  
TALL SPACERS  
03927-2 (5)



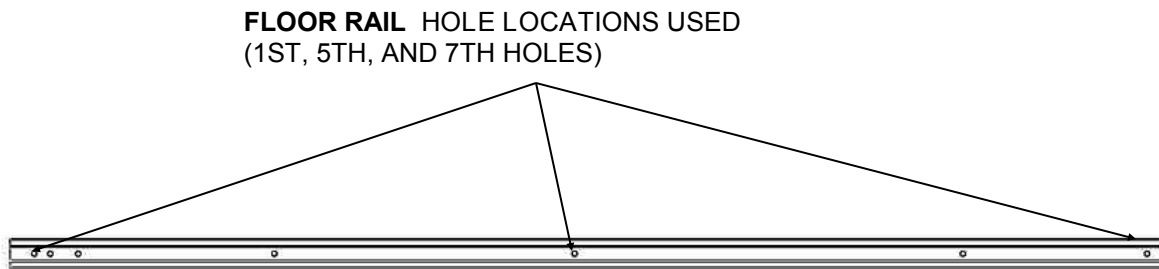
47075, RAIL X 119"

UP AGAINST WHEEL WELL

**STEP 3A CURB SIDE UPPER/LOWER RAIL HOLE IDENTIFICATION PAGE**



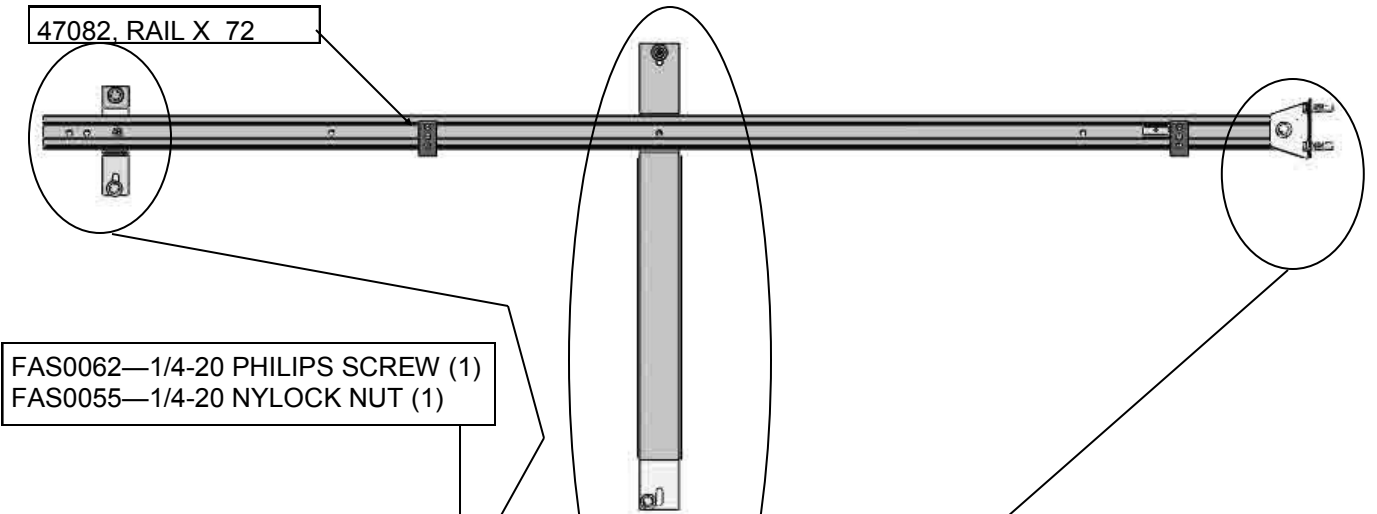
**IMPORTANT:  
DO NOT USE FRONT TWO HOLES  
FOR UPPER RAIL INSTALLATION.**



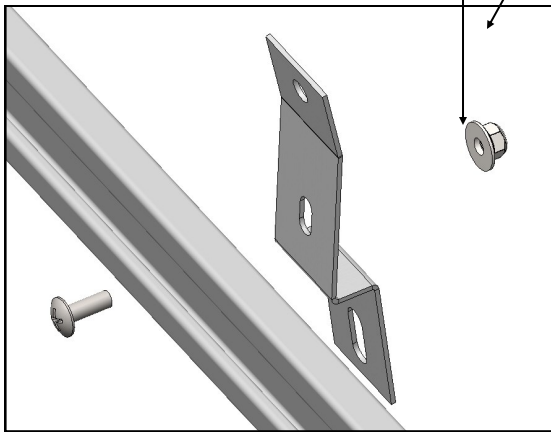
**STEP 3A CURB SIDE UPPER RAIL, RAIL ASSEMBLY**

- ASSEMBLE RAIL BEFOR PUTTING IN VEHICLE, **DO NOT FULLY TIGHTEN**

47082, RAIL X 72

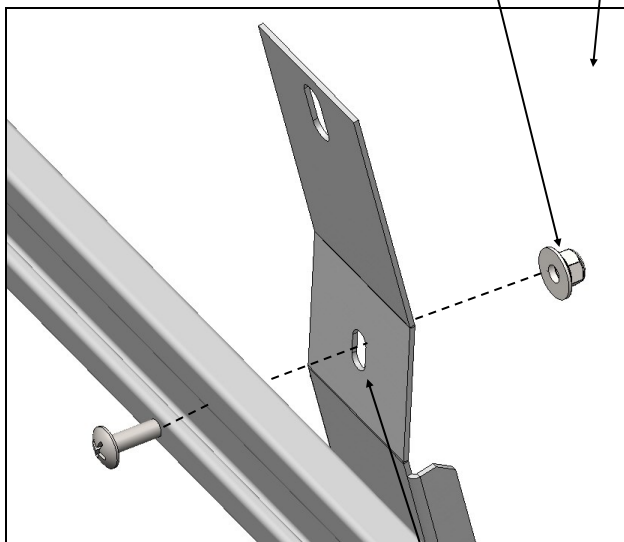


FAS0062—1/4-20 PHILIPS SCREW (1)  
FAS0055—1/4-20 NYLOCK NUT (1)



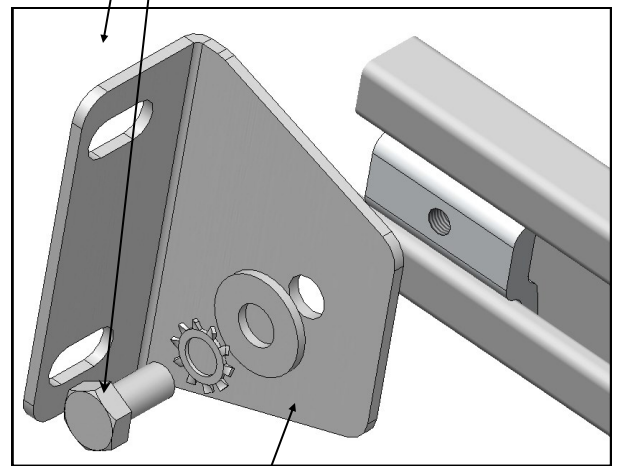
BRACKET— 47097-G

FAS0062—1/4-20 PHILIPS SCREW (1)  
FAS0055—1/4-20 NYLOCK NUT (1)



BRACKET— 47077-G

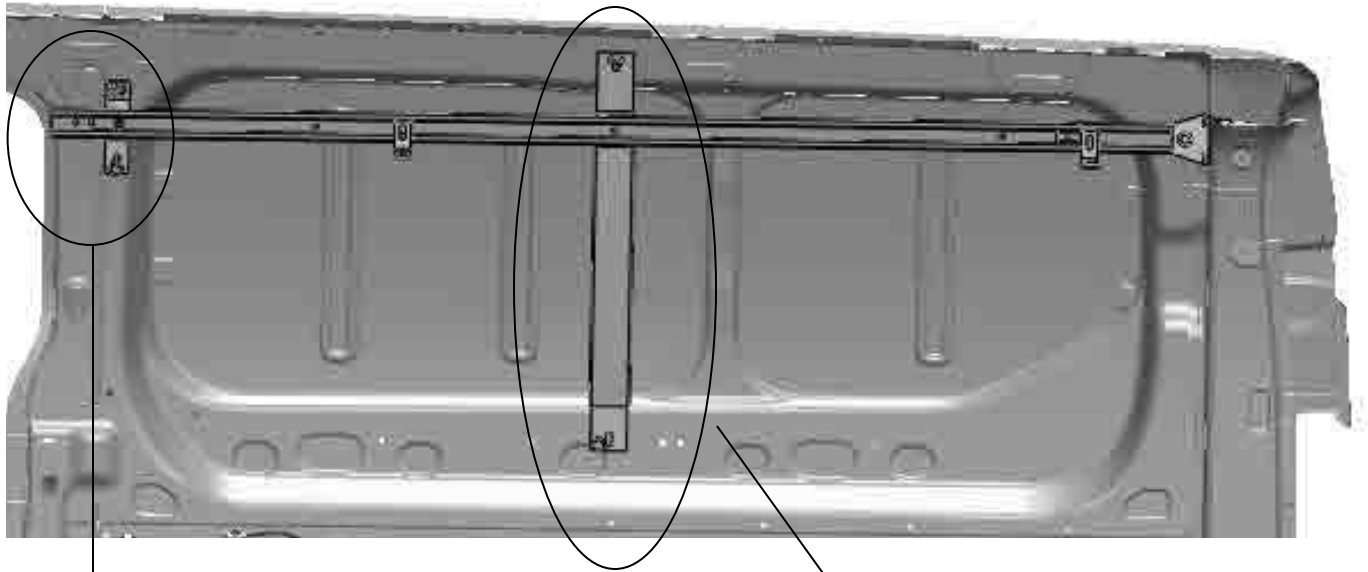
35335-0 SLIDE  
FAS0165— HEX HEAD (1)  
FAS0085—STAR WASHER (1)  
FAS0086—FLAT WASHER (1)



BRACKET— 47078 -G

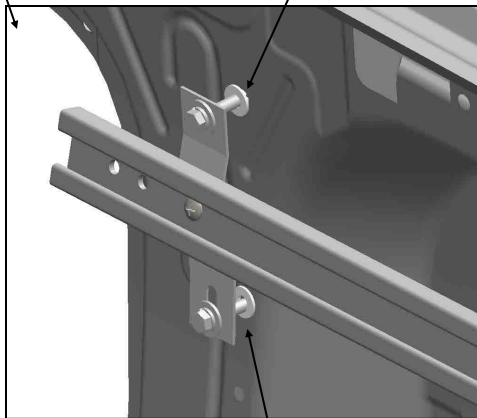
**STEP 3B CURB SIDE UPPER RAIL**

- INSERT RAIL ASSEMBLY INTO VEHICLE, TRANSFER HOLES TO ADD PLUSNUTS

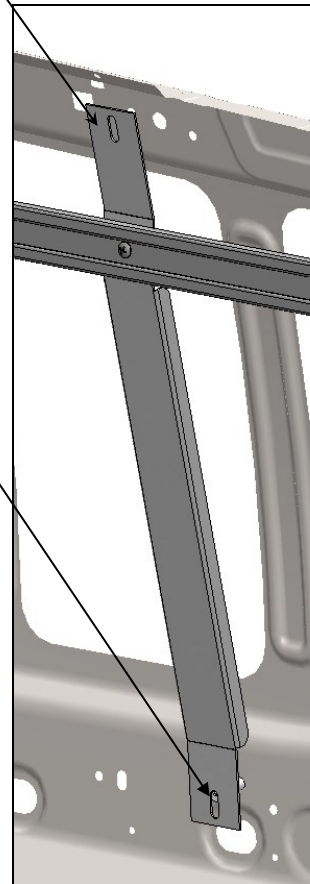


EXISTING M8 INSERT

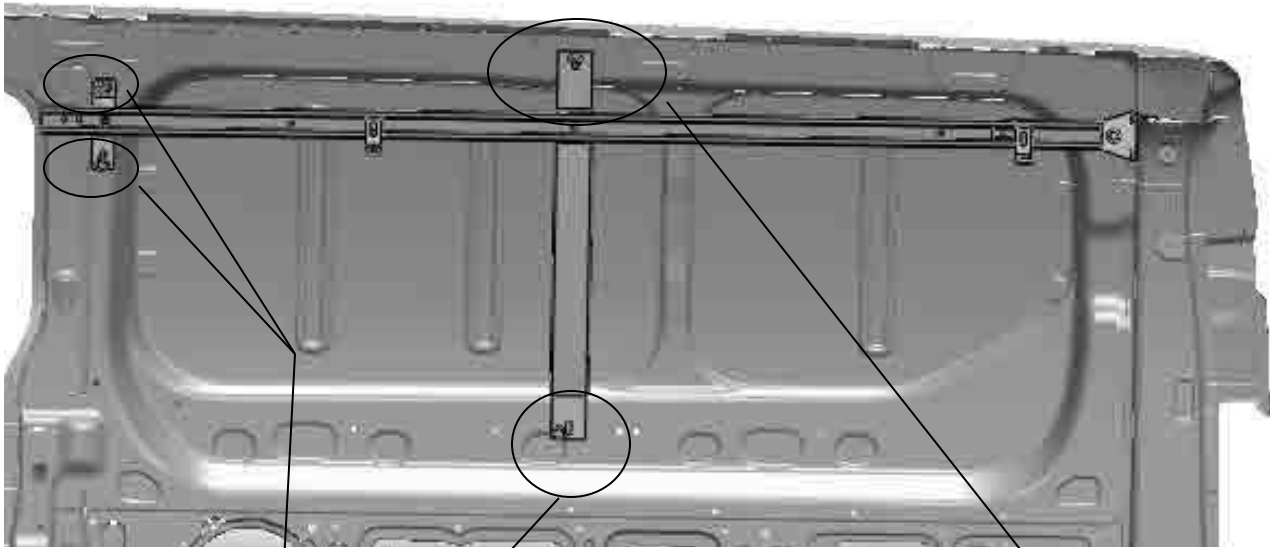
TRANSFER HOLES  
OPEN HOLE UP TO 1/2" DIA  
WITH DRILL STOP  
ADD PLUSNUTS  
FAS0091—5/16 PLUSNUT (3)



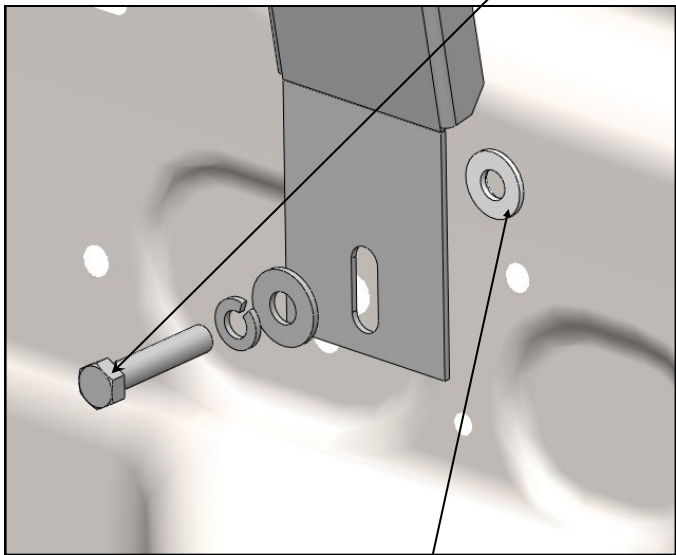
ADD PLUSNUT TO THE TOP  
HALF OF THE EXISTING  
SLOT



**STEP 3C - INSTALLATION OF CURB SIDE UPPER RAIL**

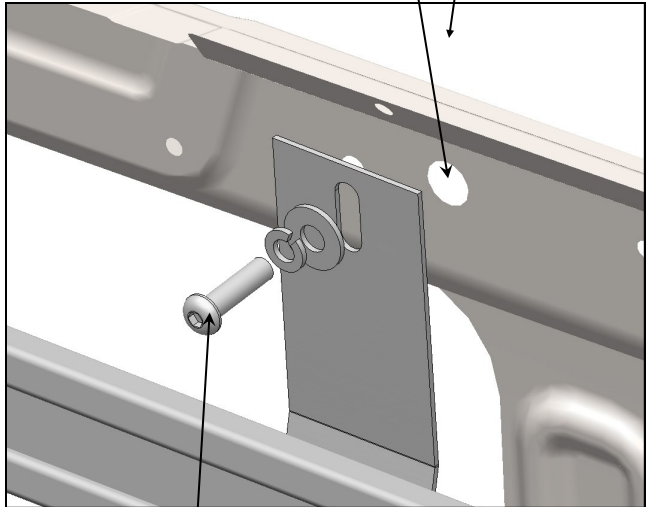


FAS0093— HEX HEAD (3)  
FAS0098—LOCK WASHER (3)  
FAS0086—FLAT WASHER (3)



FAS0091—5/16 PLUSNUT

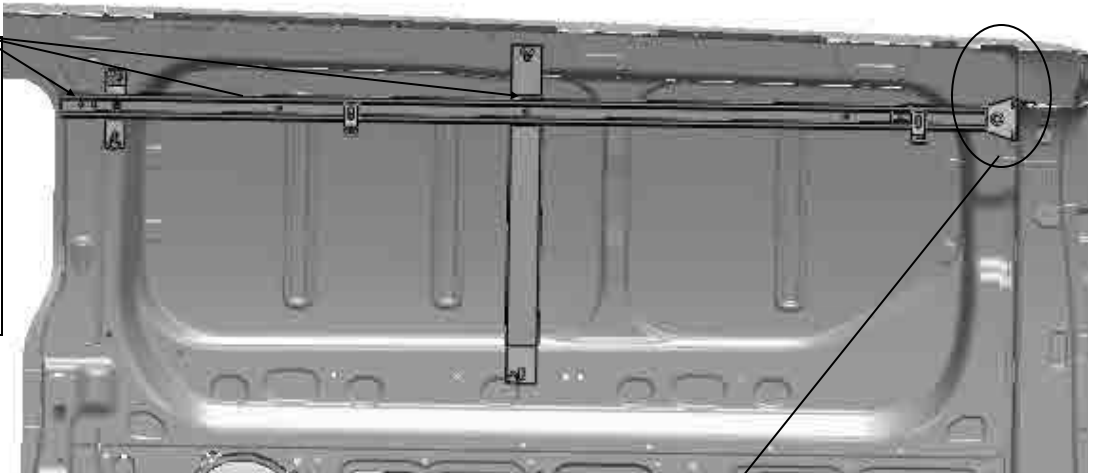
EXISTING M8 INSERT



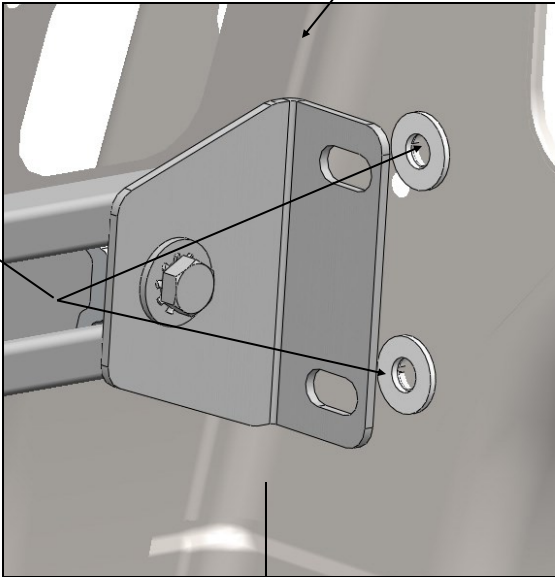
FAS0741— M8 1.25 BUTTON  
SCREW (1)  
FAS0098—LOCK WASHER (1)  
FAS0086—FLAT WASHER (1)

### STEP 3D - FINAL INSTALLATION OF CURB SIDE UPPER RAIL

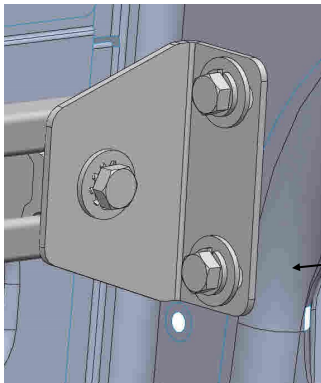
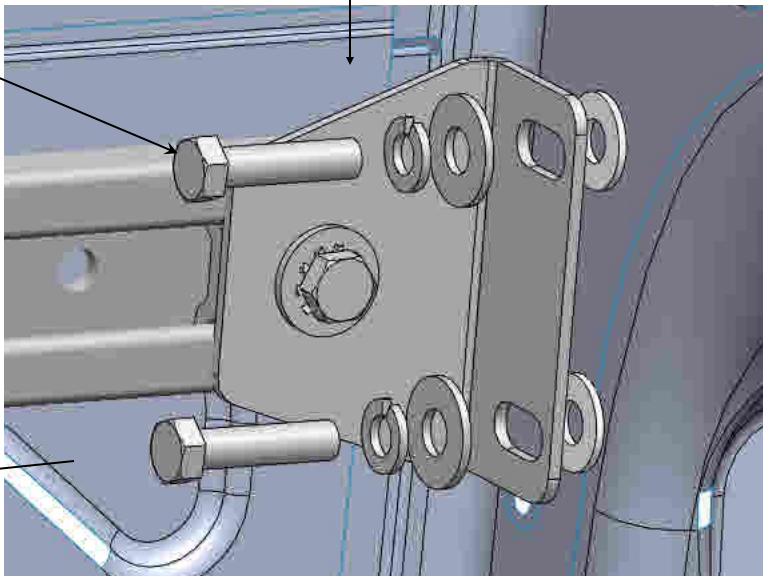
MAKE SURE THE RAIL IS STRAIGHT AND TIGHTEN TO AN APPROXIMATE HEIGHT OF 47.25" FROM THE FLOOR TO THE BOTTOM OF THE RAIL.



TRANSFER HOLES  
OPEN HOLE UP TO 1/2" DIA  
WITH DRILL STOP  
ADD PLUSNUTS  
FAS0091—5/16 PLUSNUT (2)



FAS0093— HEX HEAD (2)  
FAS0098—LOCK WASHER (2)  
FAS0086—FLAT WASHER (2)





**STEP 4 - ADD CURB SIDE FLOOR RAIL**

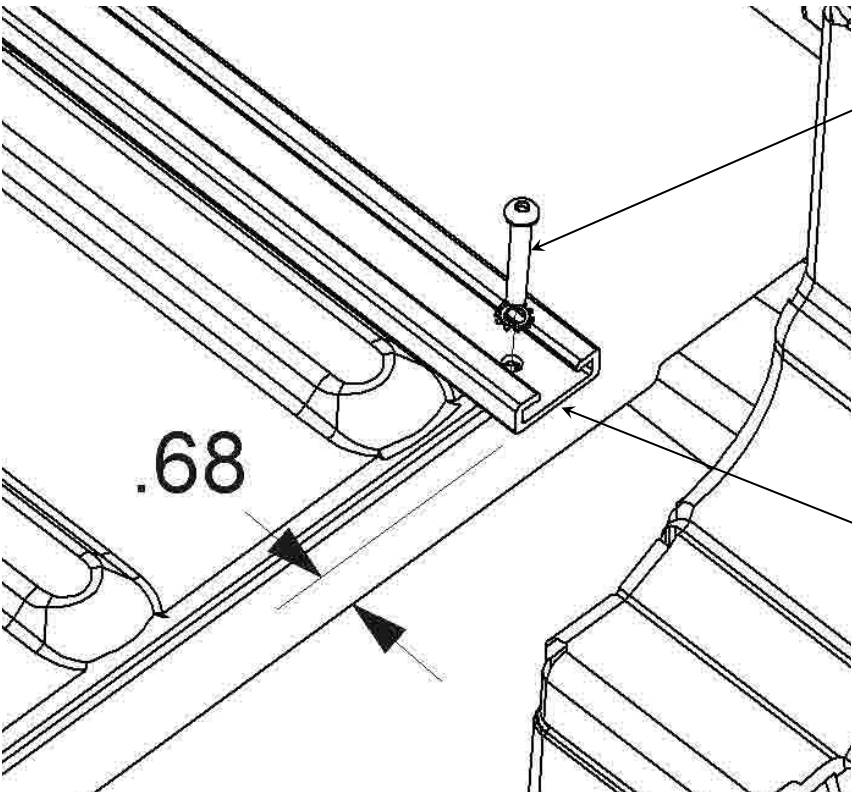
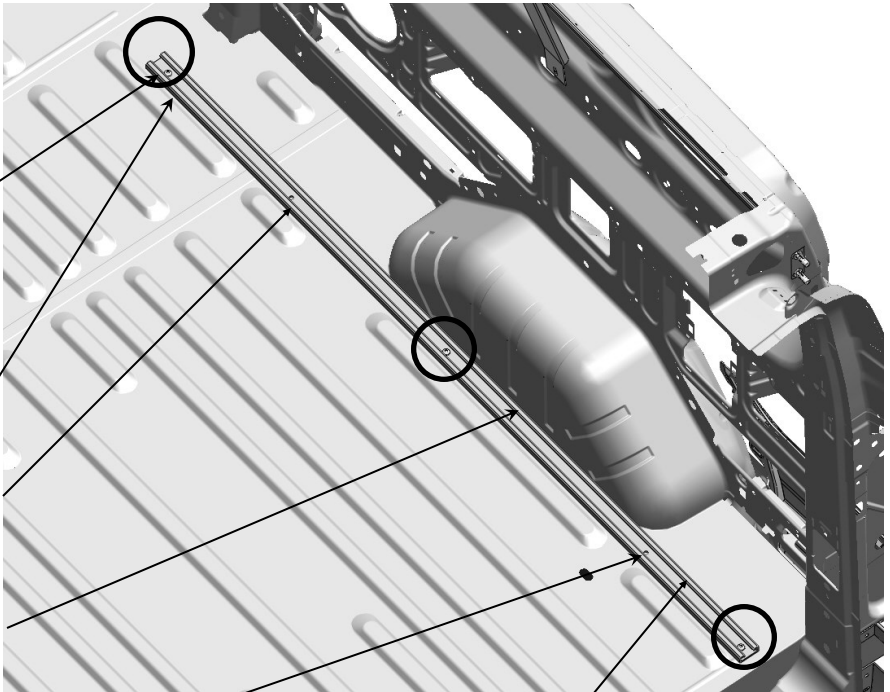
TRANSFER HOLE LOCATIONS  
(3) PLACES  
REMOVE RAIL  
DRILL AND SET PLUSNUTS  
FAS0091—5/16 PLUSNUT (3)

**DO NOT USE THESE HOLES**

UP AGAINST WHEEL WELL

**DO NOT USE THIS HOLE**

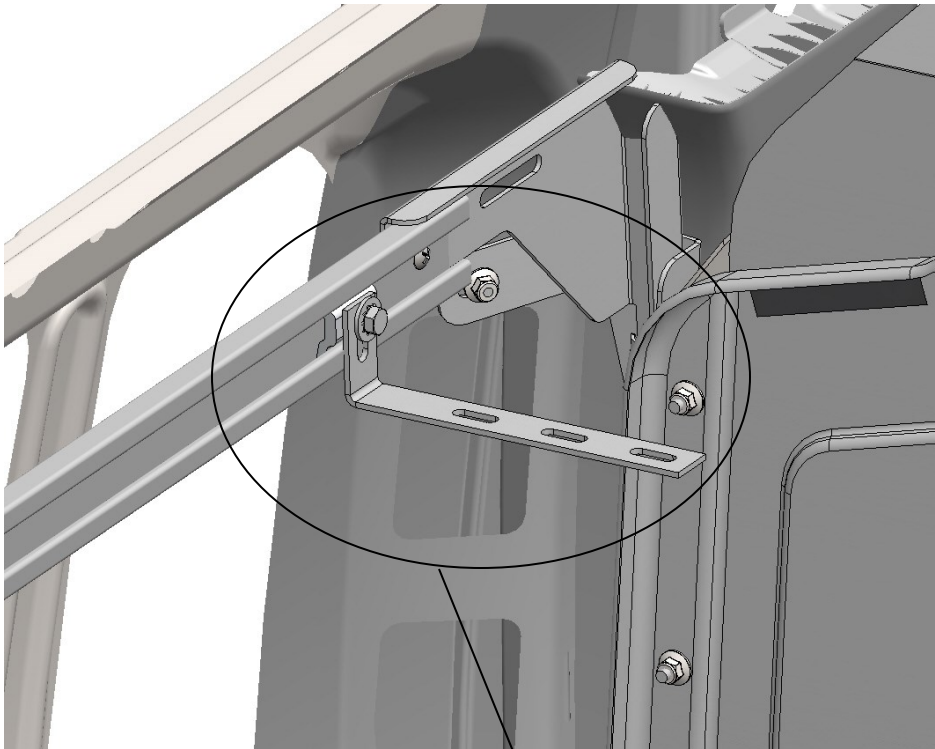
47082, RAIL X 72



FAS0091—PLUSNUT (3)  
FAS0048—BUTTON HD (3)  
FAS0085—STAR WASHER (3)

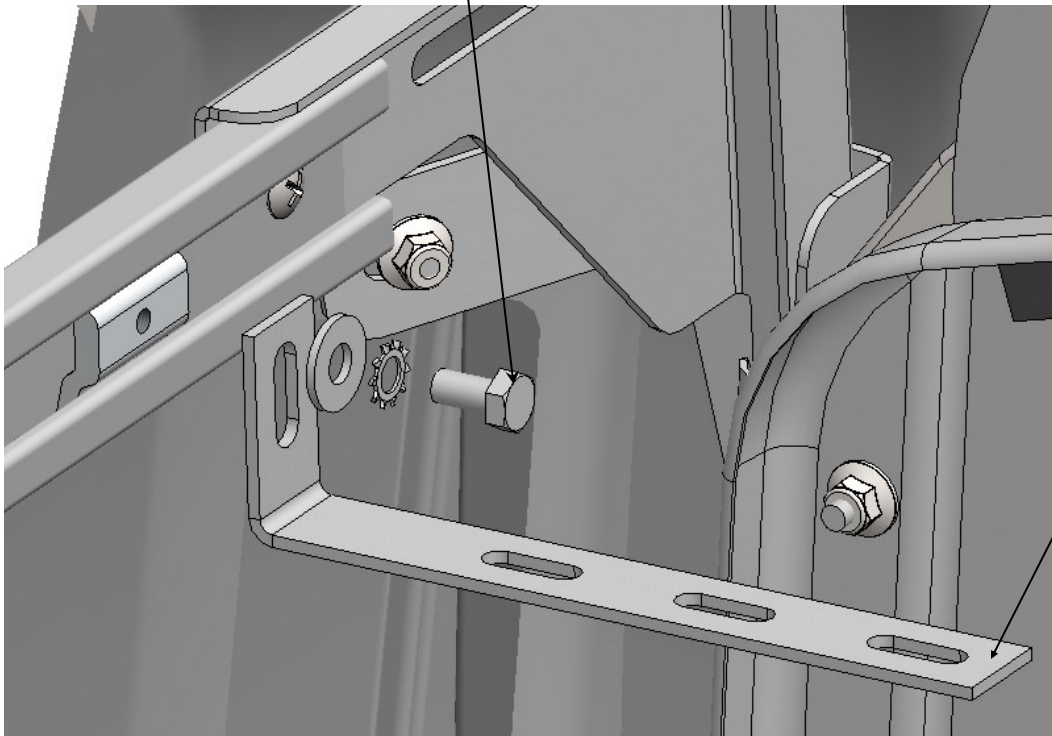
APPROX 11/16" FROM SEAM  
LINE UP WITH TOP RAIL

**STEP 5 - ADD SHELFING BRACKETS - 4 ON STREET SIDE UPPER AND 2 ON CURB SIDE UPPER**

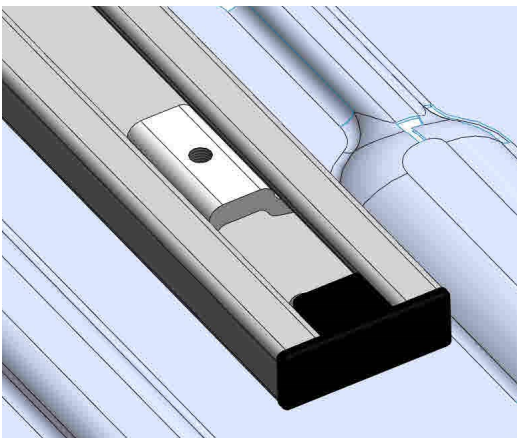
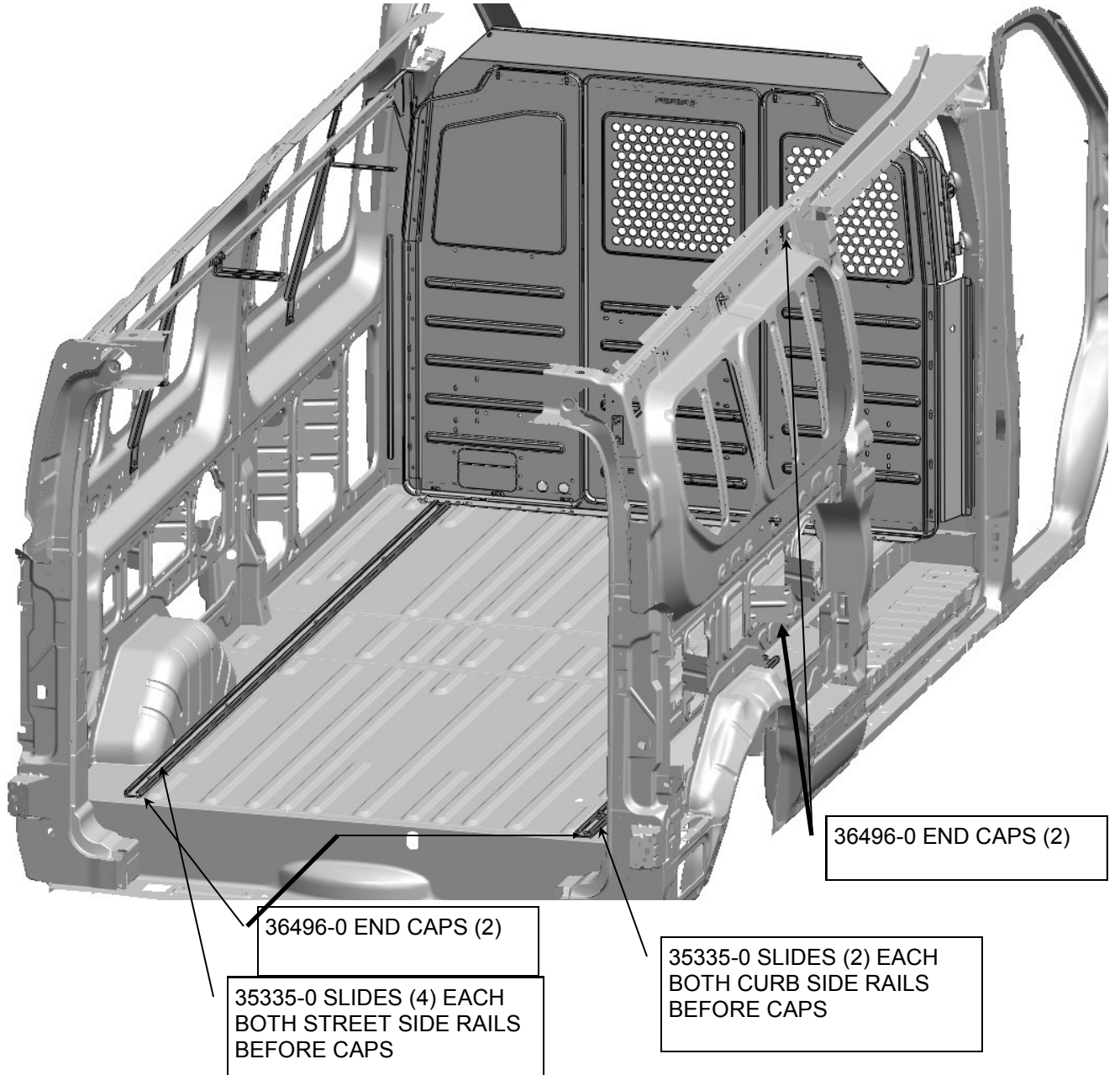


35335-0 SLIDE (6)  
FAS0165— HEX HEAD (6)  
FAS0085—STAR WASHER (6)  
FAS0086—FLAT WASHER (6)

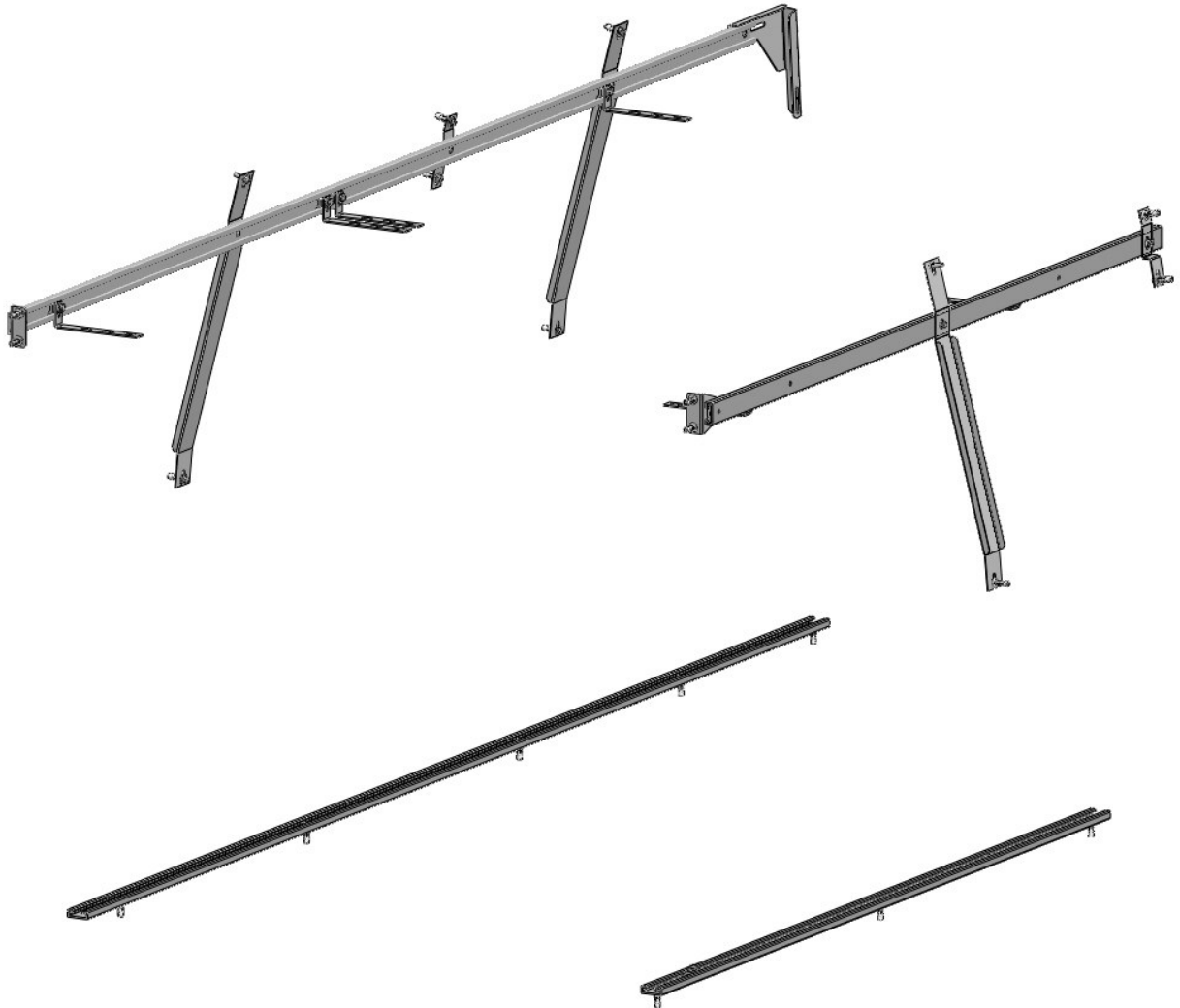
SHELFING BRACKET—  
45339-G (6)  
4 UPPER STREET SIDE  
2 UPPER CURB SIDE



**STEP 5 - ADD SLIDES AND END CAPS TO RAILS**



**YOUR INSTALLATION IS NOW COMPLETE**  
**See Additional Pages to Re-Install the Liner**



**DOUBLE CHECK ALL FASTENERS LOCATIONS TO BE SURE THAT ALL  
FASTENERS ARE TIGHTENED TO SPECIFICATIONS.  
YOUR INSTALLATION IS NOW COMPLETE!  
STOW THIS COPY IN THE VEHICLE FOR FUTURE REFERENCES!**

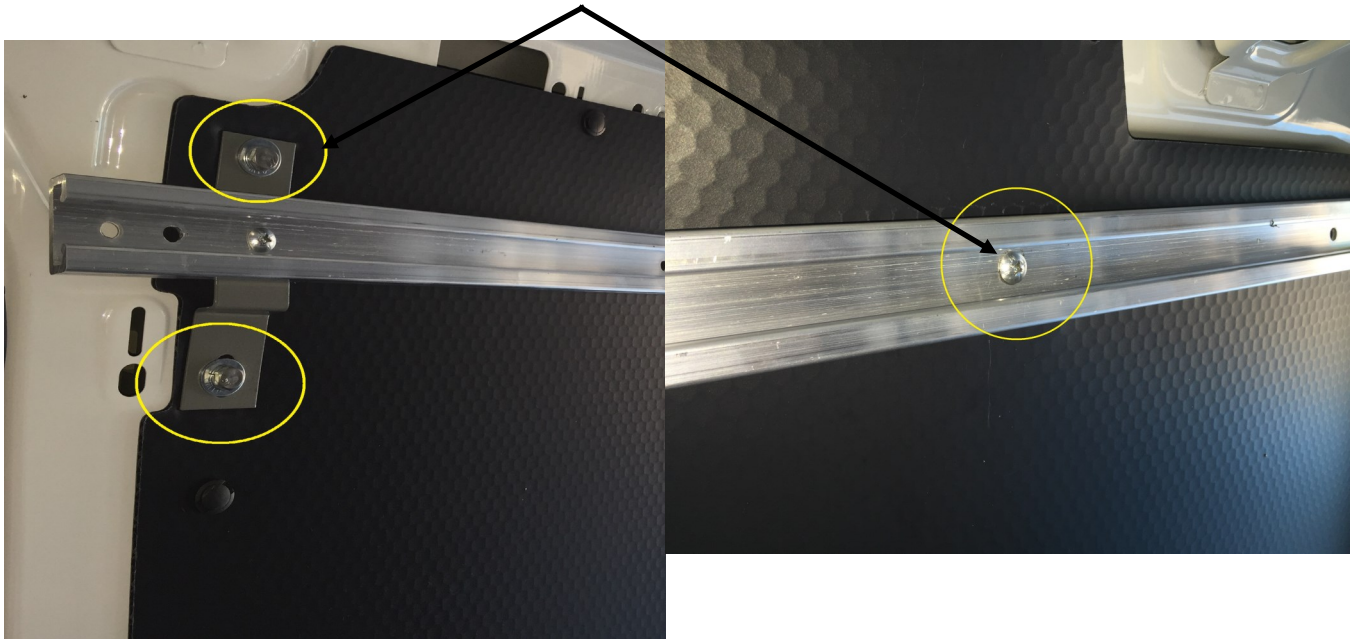
### STEP 6- Re-Install OEM Upper Liner from Step 1A

Remove Rail Kit, Install Aux. Body Post and set 1/4-20 Plusnut in Body Post where Rail was Mounted. Re-Install OEM liner, add clearance holes over the Plusnuts from previous steps.



### STEP 7– Re-Install Rail Kit over Liner

Place rail kit over liner and re-Install with proper fasteners as shown here



### STEP 8– Street Side Rail Kit

Repeat Steps 6 & 7 for Street Side

