

Introduction / Comments:

This rail kit is designed to fit in your 148 wheel base Ford Transit, Standard roof. Please note this is the UPPER rails only; designed to work with the Adrian Steel Floor Plate Kits.

Note:

It is advised that all fasteners used in this assembly and installation should be checked for tightness at the following intervals: @ 2-weeks and again @ 6-weeks of operation. This preventive maintenance step must be completed to ensure your Partition gives you long service life.



RK148TLCSU/RK148TLSSU RAIL KIT, FTL, 148, UPPERS

- PRECAUTIONS -





 **CAUTION** 
**THE USE OF AIR IMPACT TOOLS CAN
OVER-TORQUE FASTENERS AND
CAUSE FASTENER FAILURE!**





 **CAUTION** 
**ALL INSTALLATION HOLES SHOULD BE SEALED
WITH SILICON OR BUTYL SEALANT TO PREVENT
EXHAUST FUMES FROM ENTERING THE VEHICLE!**



 **DANGER** 
**INSPECT FOR FUEL TANK, FUEL LINES, BRAKE LINES, HIGH
VOLTAGE BATTERIES AND ELECTRICAL LINES PRIOR TO
DRILLING TO AVOID DAMAGING CRITICAL VEHICLE SYSTEMS
OR INJURY TO INSTALLER DURING INSTALLATION PROCESS!**



 **CAUTION** 
**TO AVOID DAMAGING THE VEHICLE ALWAYS USE DRILL
STOPS WHEN DRILLING ANY INSTALLATION HOLES!
ADRIAN AVAILABLE PART #'S 31121-0 (1/2" DEEP),
31122-0 (3/4" DEEP)**



- IMPORTANT WARRANTY REQUIREMENTS -

1. SUBSTITUTING ADRIAN STEEL SPECIFIED FASTENERS FOR ASSEMBLY AND/OR INSTALLATION WILL VOID YOUR PRODUCT WARRANTY.
2. ALL HOLES DRILLED INTO VEHICLE SHOULD HAVE THE RAW METAL EDGES SEALED WITH A SELF-ETCHING PRIMER TO RESIST CORROSION AND POTENTIAL FASTENER POINT FAILURE.
3. ALL FASTENERS USED IN THE INSTALLATION OF THIS PRODUCT SHOULD BE TIGHTENED TO THE TORQUE(S) SPECIFIED IN THESE INSTRUCTIONS.
4. THESE INSTRUCTIONS SHOULD BE KEPT WITH THE VEHICLE.

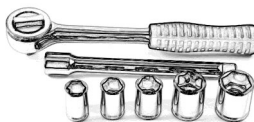
THE BASIC TOOLS NEEDED FOR MOST INSTALLATIONS



DRILL



DRILL BIT WITH
STOP



RATCHET, SOCKETS
AND/OR WRENCHES



SCREWDRIVERS



MEASURING TAPE

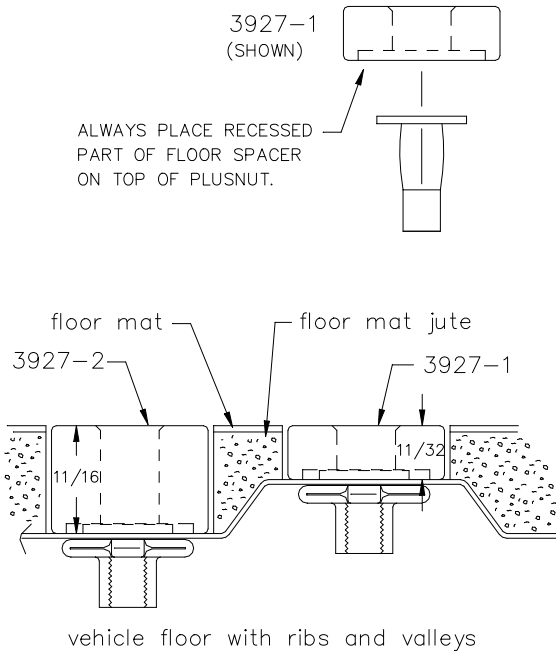
ADDITIONAL TOOLS MAY BE NEEDED FOR THIS INSTALLATION AND THEY WILL BE IDENTIFIED IN THE STEPS THAT FOLLOW.

If your vehicle contains carpet or a rubber floor mat you will need to prepare the mounting location. Position the product to be installed into the vehicle and once you are satisfied with the mounting locations, mark the mounting locations. Using a 1-3/16" diameter carpet cutter (P/N: 31183-0). Select the appropriate floor spacers as shown in the illustration. Set those aside for use later into the installation process.

Using the correct drill bit size for the selected plusnut, drill the mounting holes in the vehicle sheet metal to prepare for installing the plusnuts.

If you are thru-bolting at any of the locations simply drill a hole that is 1/16" larger than the bolt size(s) for those locations.

Once you have drilled the holes into the vehicle, the raw metal edges should be sealed using a self-etching primer to resist corrosion and potential fastener point failure.



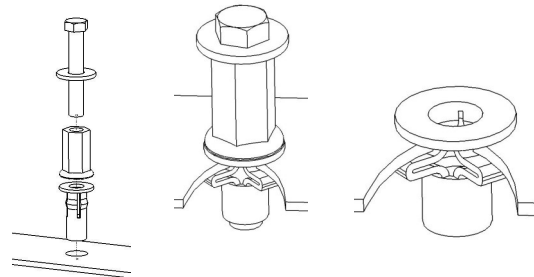
A PLUSNUT (RIVNUT) SETTING TOOL IS REQUIRED FOR PLUSNUT (RIVNUT) INSTALLATION AND IS NOT SUPPLIED WITH THIS KIT. OR USE AN AIR POWERED PLUSNUT SETTING GUN.

1/4-20UNC Plusnut (FAS0052) Use 3/8" dia. drill w/stop

FAS0080 SCREW, HXHD, 1/4-20UNCx2.00", G8
FAS0067 WASHER, FLAT, 1/4"ID
22200-0 PLUSNUT TOOL

5/16-18UNC Plusnut (FAS0091) Use 1/2" dia. drill w/stop

FAS0095 SCREW, HXHD, 5/16-18UNCx2.00", G8
FAS0086 WASHER, FLAT, 5/16"ID
22200-0 PLUSNUT TOOL

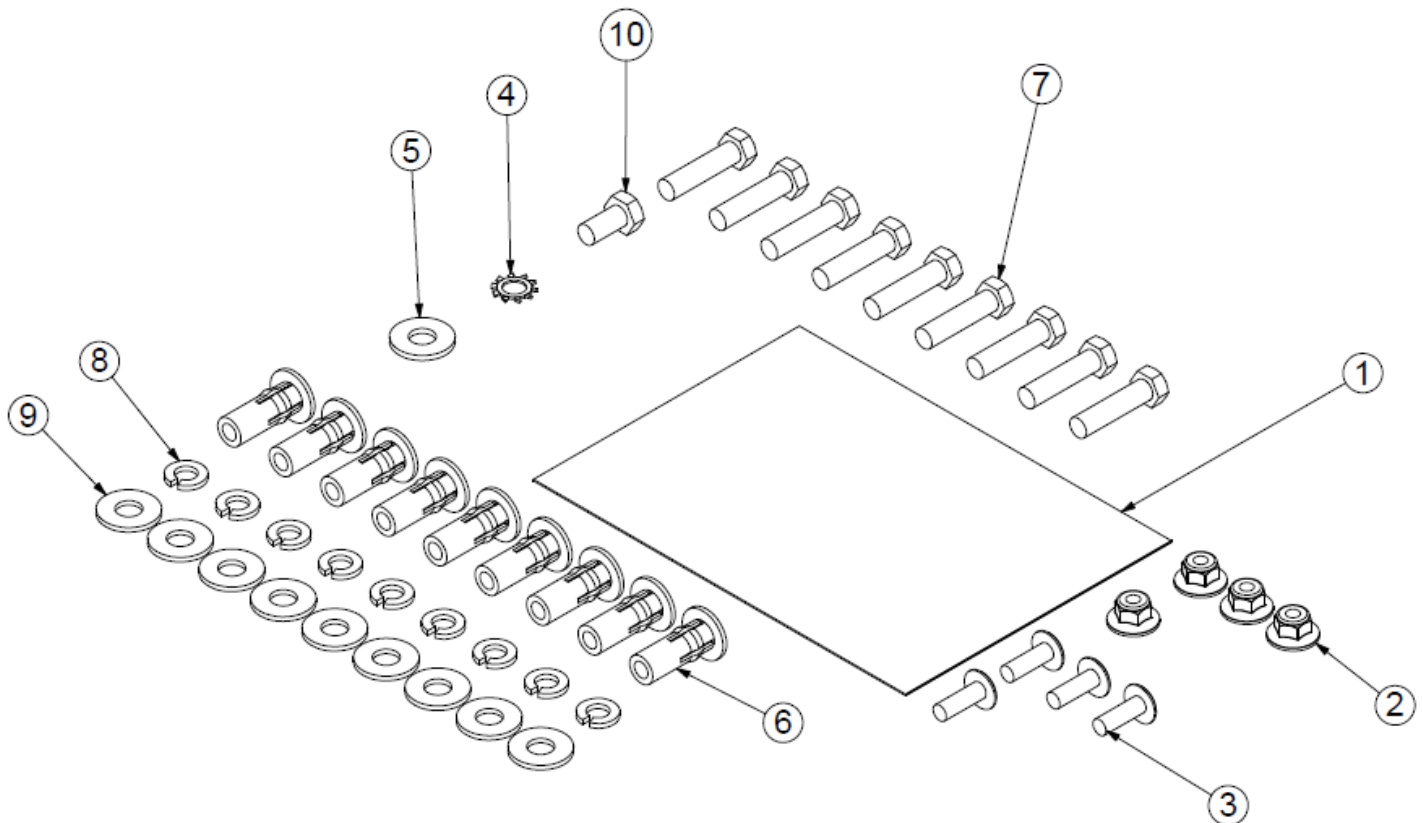


Place barrel of the plusnut body in sheet metal thru hole until flange is flush with sheet metal.

Using a 9/16" combination wrench of plusnut tool body and a second hand wrench, ratchet, or air tool, rotate the hex bolt head CW to draw plus nut flanges up (set the plusnut).

Assembly and Installation Fastener Identification Sheet (BAGRKTLWU)

ITEM NO.	PART NUMBER	DESCRIPTION	QTY.
1	BAG0507-A	5" x 7" 3MIL AUTOBAG	1
2	FAS0055	NUT,HEX NLK FLG 1/4-20 ZP	4
3	FAS0062	SCREW,THP 1/4-20X.75 G5ZP	4
4	FAS0085	WASHER,LCK EXT 5/16 ZP	1
5	FAS0086	WASHER,FLAT USS 5/16 ZP	1
6	FAS0091	Plusnut, 5/16	9
7	FAS0083	Screw, Hex Hd, 5/16-18x1.25	9
8	FAS0098	Washer, Lock, Split, 5/16, Zinc Plate	9
9	FAS0112	WASHER,FLAT USS 5/16 ZN	9
10	FAS0165	SCREW,HH 5/16-18X.62 ZN	1



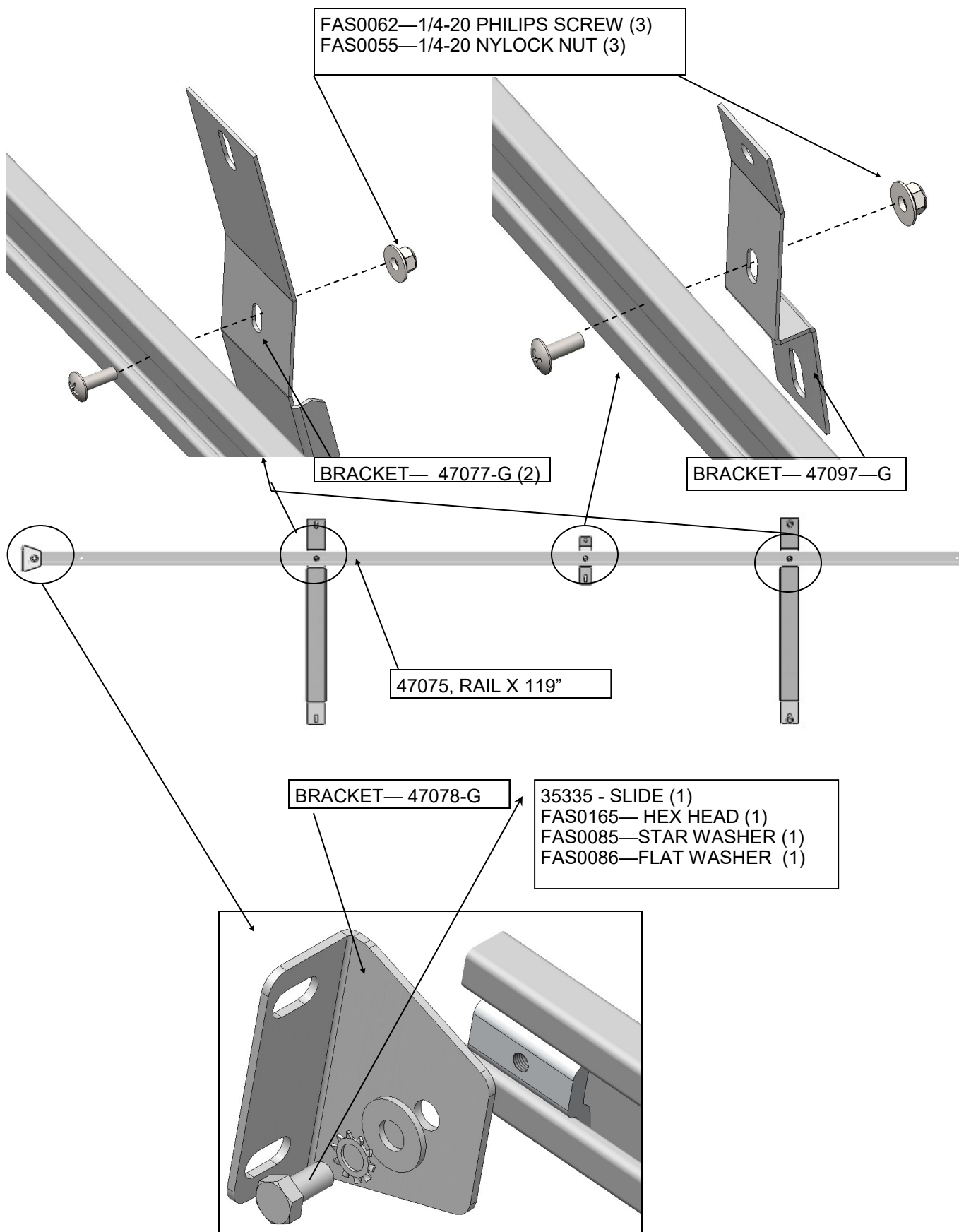
STEP 1A —VEHICLES WITH OEM LINER KITS—NEED TO REMOVE UPPER PANELS ON THE STREET AND CURB SIDE.



GENERIC PICTURE OF VEHICLE AND
LINER KIT.

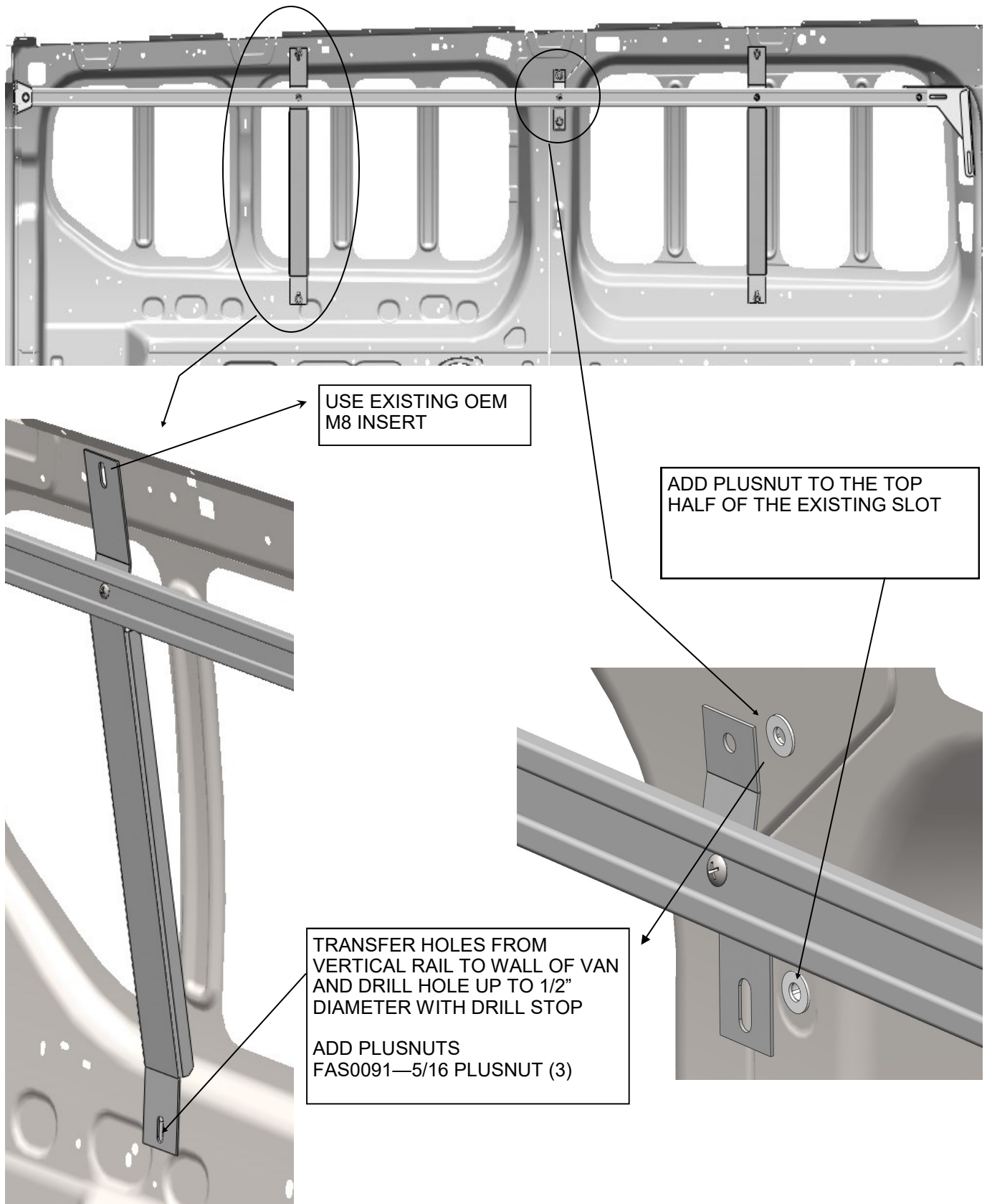
STEP 1B STREET SIDE UPPER RAIL, RAIL ASSEMBLY

- ASSEMBLE RAIL BEFORE PUTTING IN VEHICLE, **DO NOT FULLY TIGHTEN**



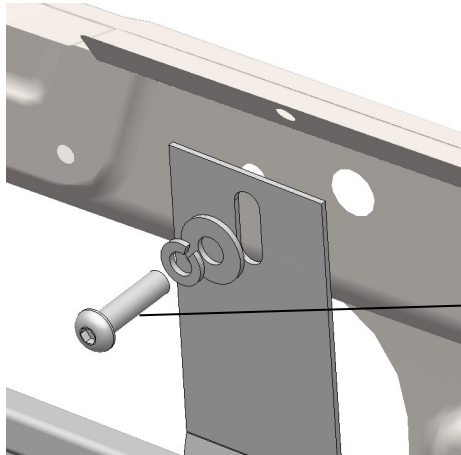
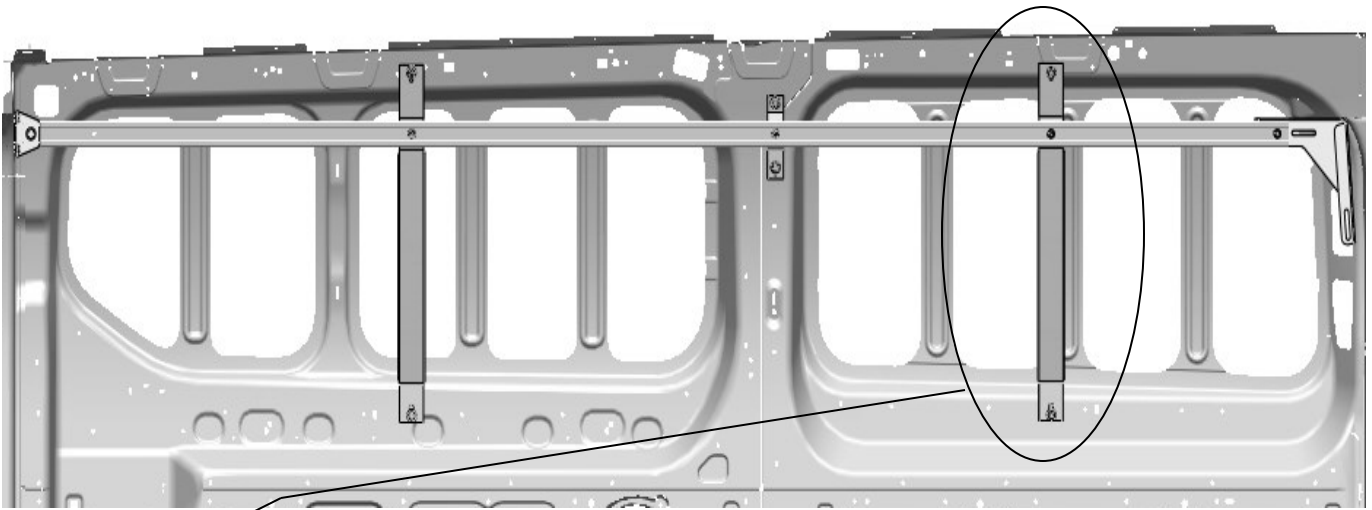
STEP 1C STREET SIDE UPPER RAIL

- INSERT RAIL ASSEMBLY INTO VEHICLE, TRANSFER HOLES TO ADD PLUSNUTS

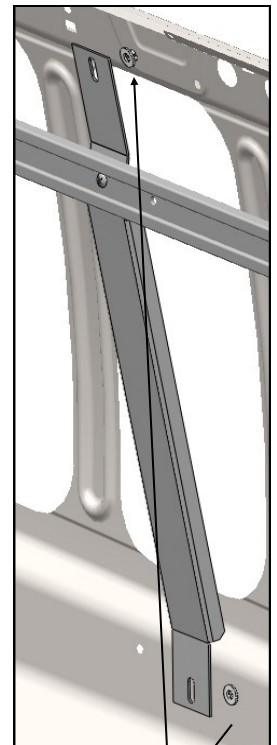


STEP 1D STREET SIDE UPPER RAIL

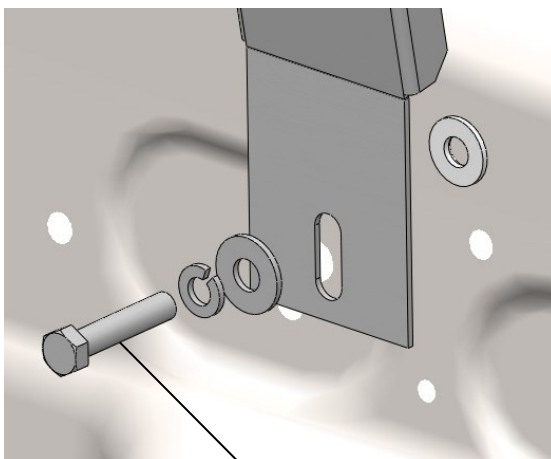
- INSERT RAIL ASSEMBLY INTO VEHICLE, TRANSFER HOLES TO ADD PLUSNUTS



FAS0741— M8 1.25 BUTTON
SCREW (1)
FAS0098—LOCK WASHER (1)
FAS0086—FLAT WASHER (1)

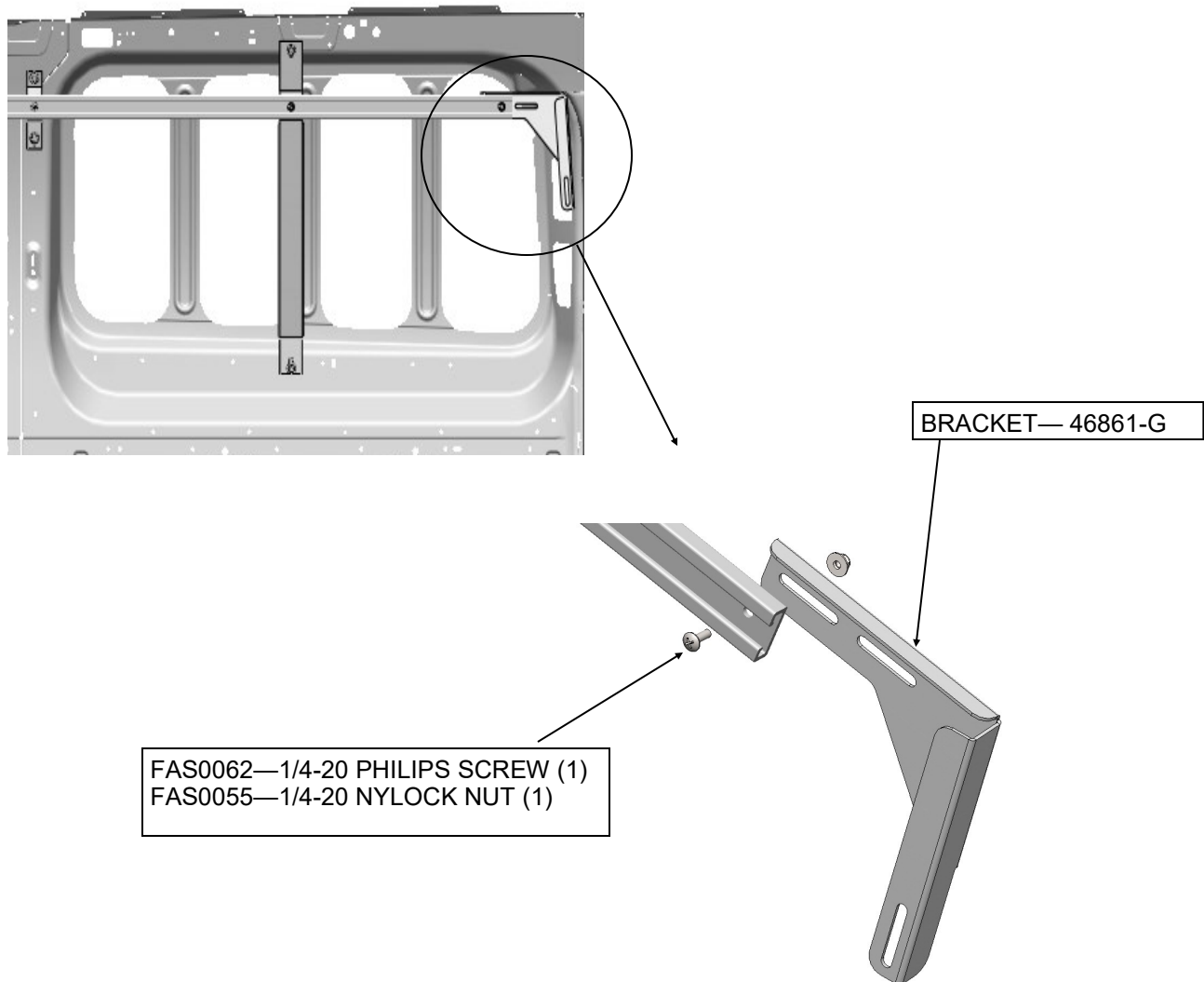


TRANSFER HOLES
OPEN HOLE UP TO 1/2" DIA
WITH DRILL STOP
ADD PLUSNUTS
FAS0091—5/16 PLUSNUT (2)



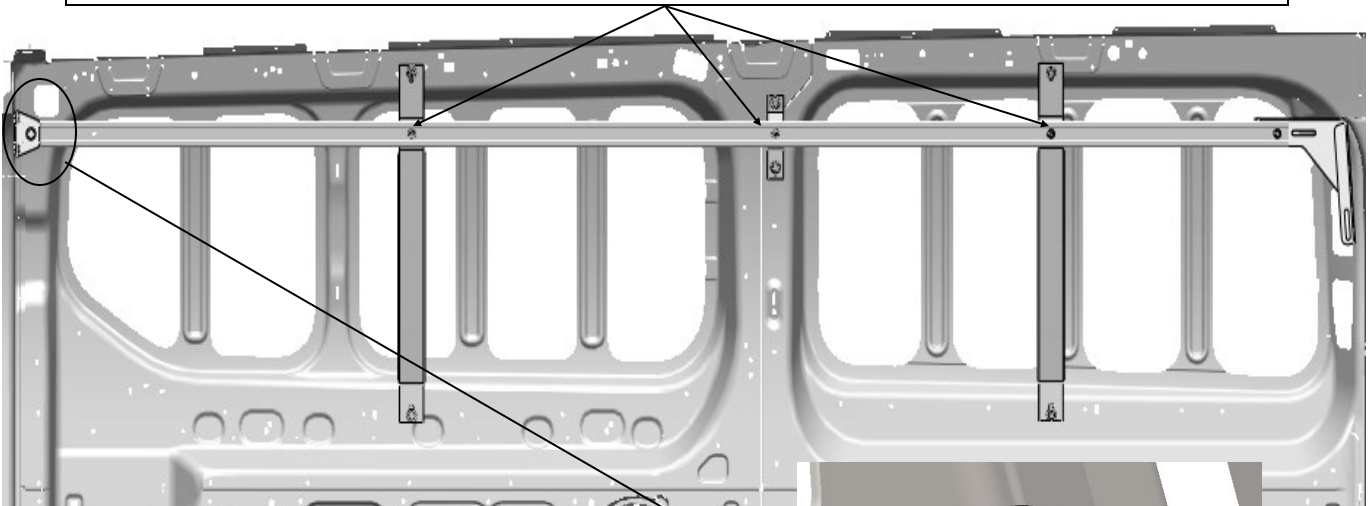
FAS0093— HEX HEAD (5)
FAS0098—LOCK WASHER (5)
FAS0086—FLAT WASHER (5)

STEP 1E - INSTALLATION OF STREET SIDE UPPER RAIL

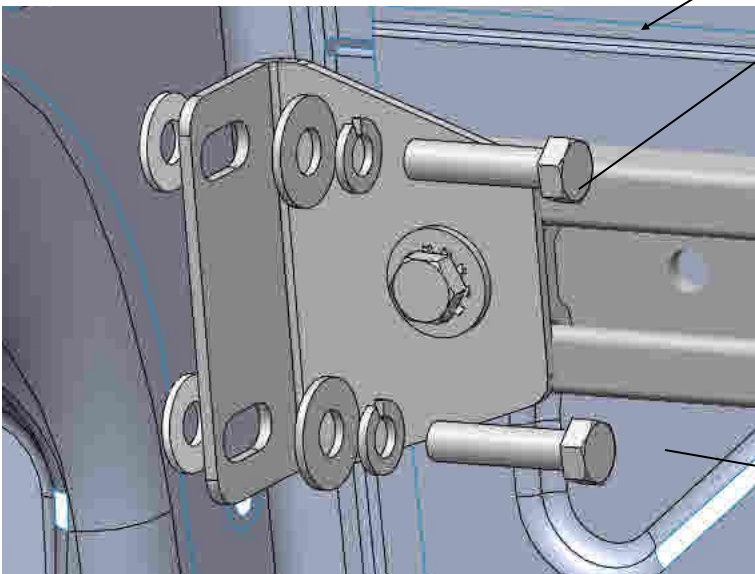
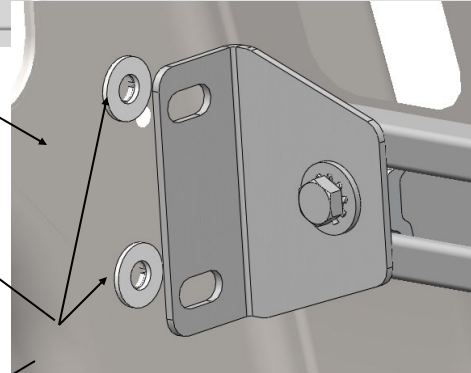


STEP 1F - FINAL INSTALLATION OF STREET SIDE UPPER RAIL

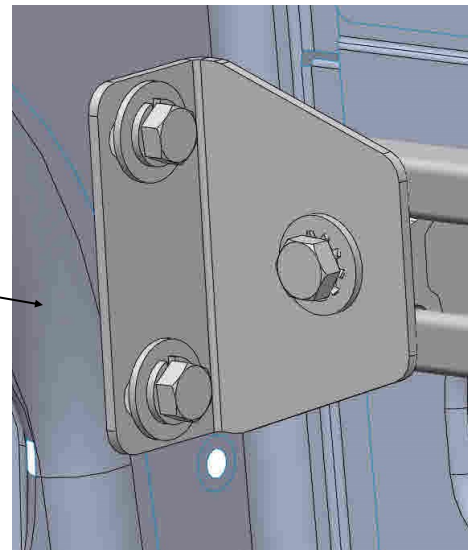
MAKE SURE THE RAIL IS STRAIGHT AND TIGHTEN TO AN APPROXIMATE HEIGHT OF 47.25" FROM THE FLOOR TO THE BOTTOM OF THE RAIL.



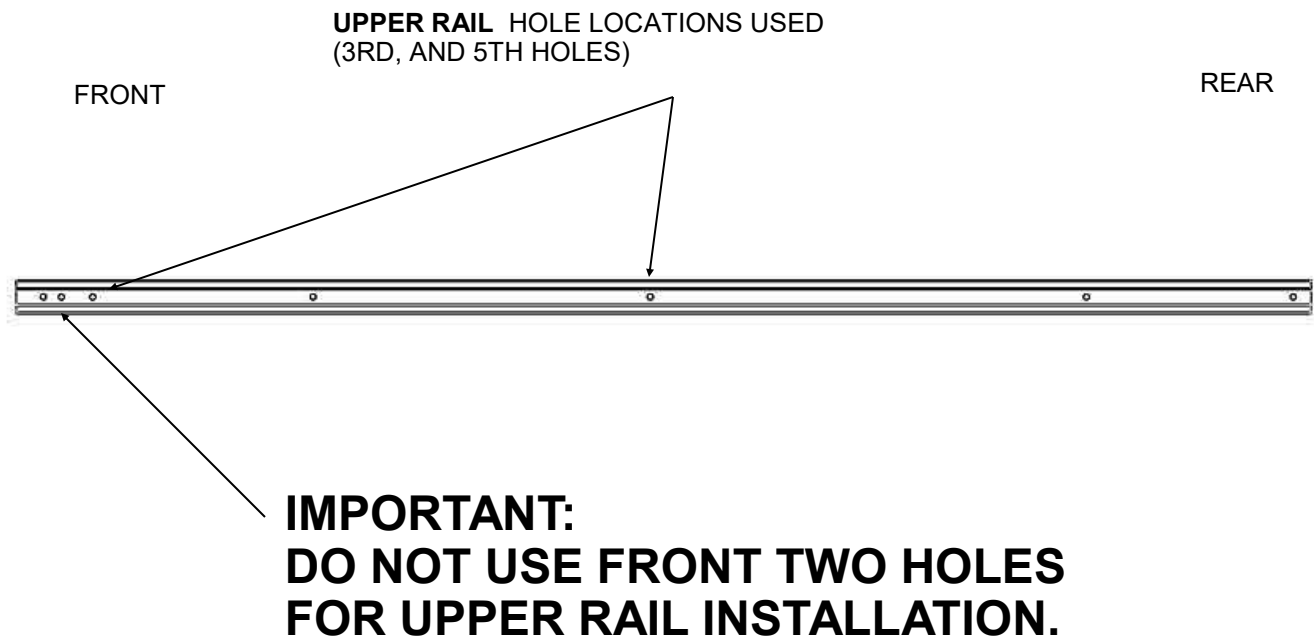
TRANSFER HOLES
OPEN HOLE UP TO 1/2" DIA
WITH DRILL STOP
ADD PLUSNUTS
FAS0091—5/16 PLUSNUT (2)



FAS0093— HEX HEAD (2)
FAS0098—LOCK WASHER (2)
FAS0086—FLAT WASHER (2)

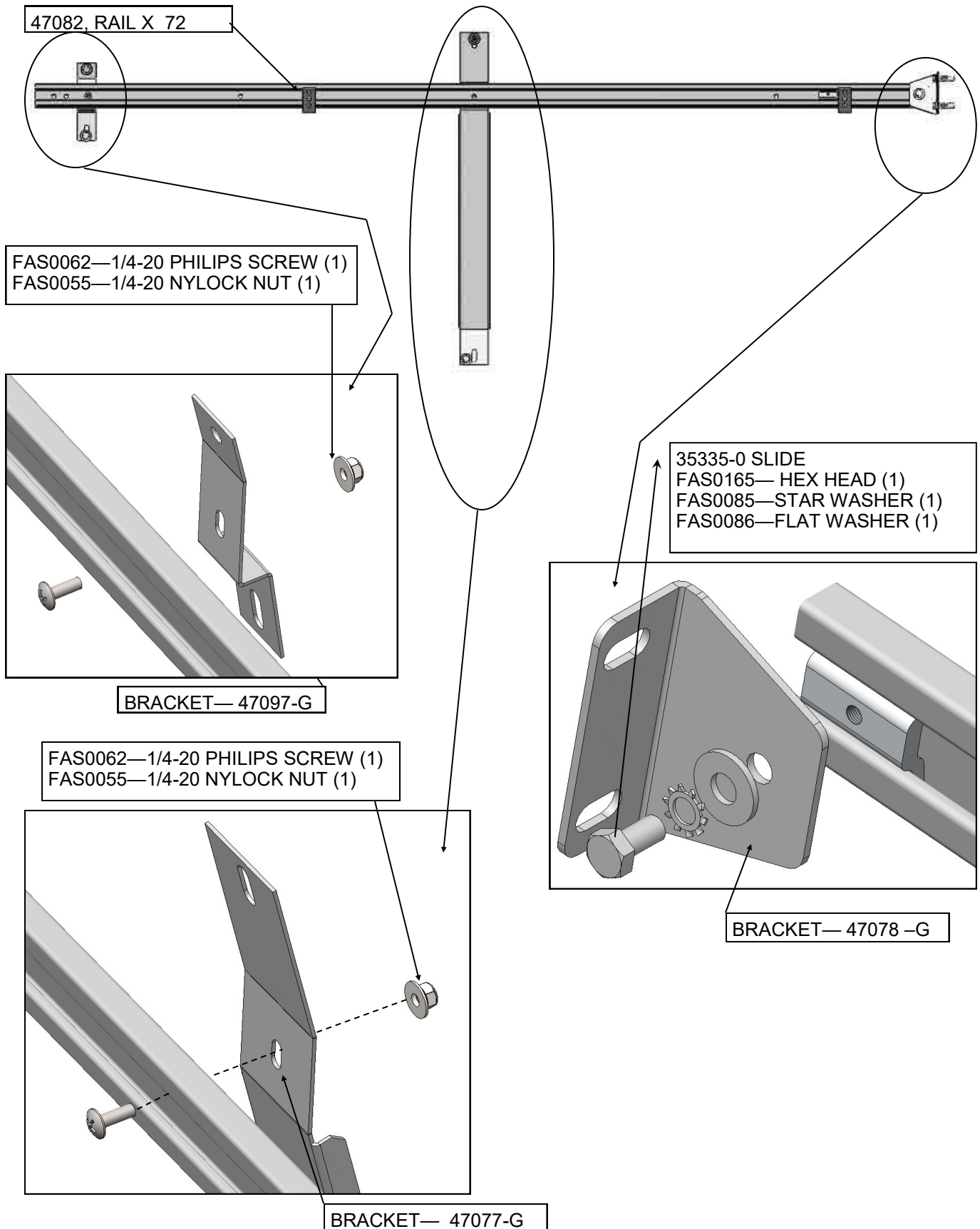


STEP 2A CURB SIDE UPPER/LOWER RAIL HOLE IDENTIFICATION PAGE



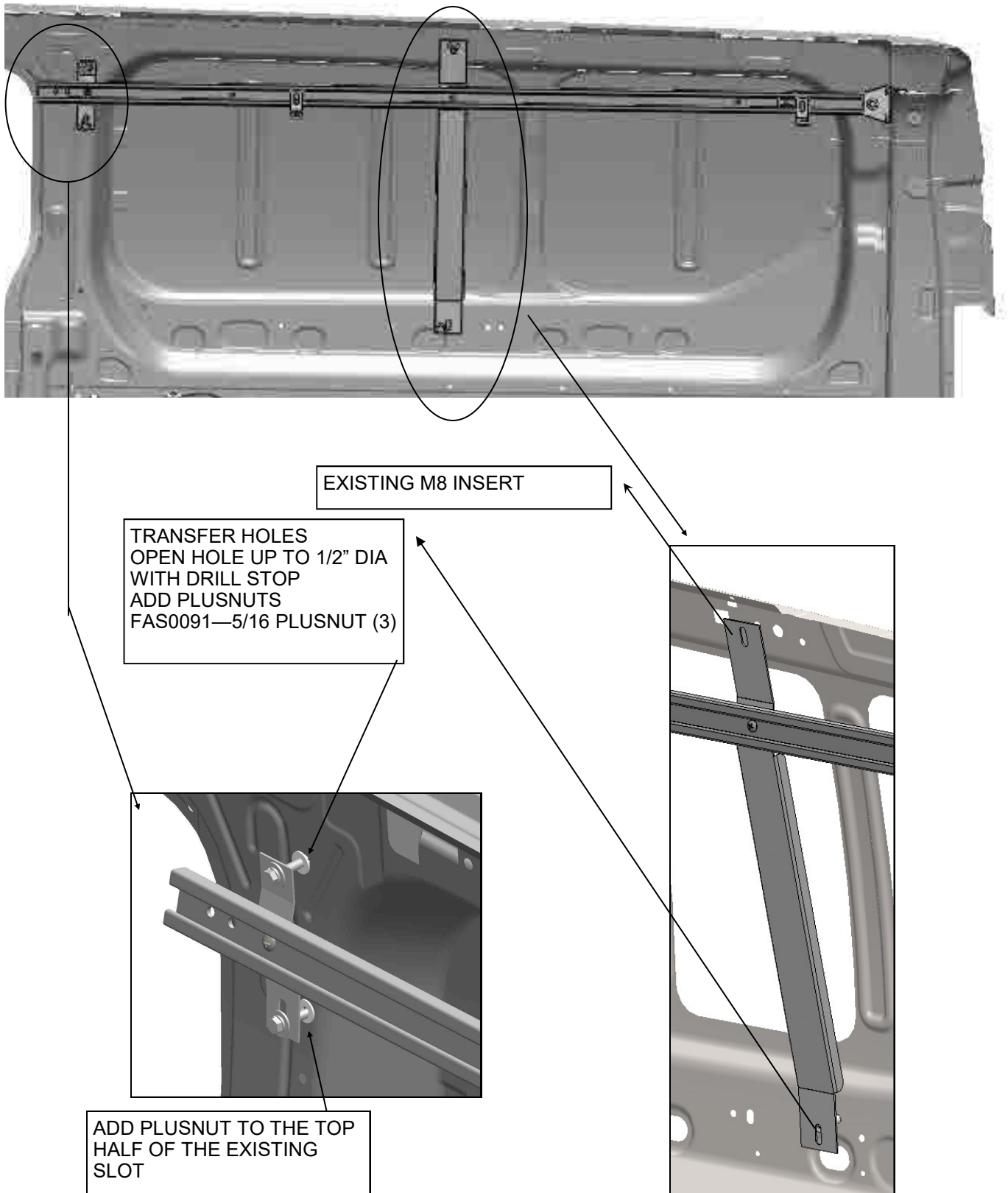
STEP 2A CURB SIDE UPPER RAIL, RAIL ASSEMBLY

- ASSEMBLE RAIL BEFOR PUTTING IN VEHICLE, **DO NOT FULLY TIGHTEN**

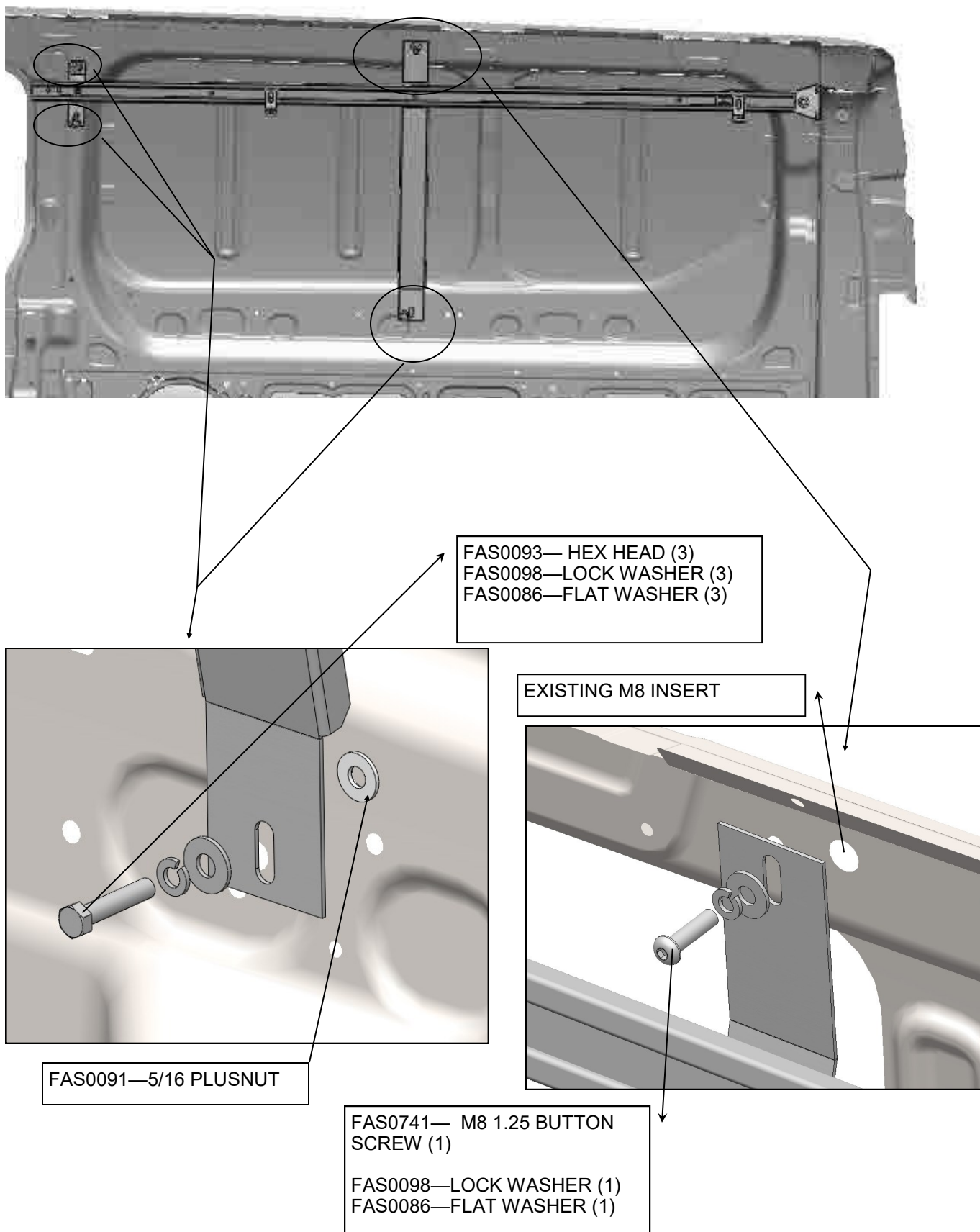


STEP 2B CURB SIDE UPPER RAIL

- INSERT RAIL ASSEMBLY INTO VEHICLE, TRANSFER HOLES TO ADD PLUSNUTS

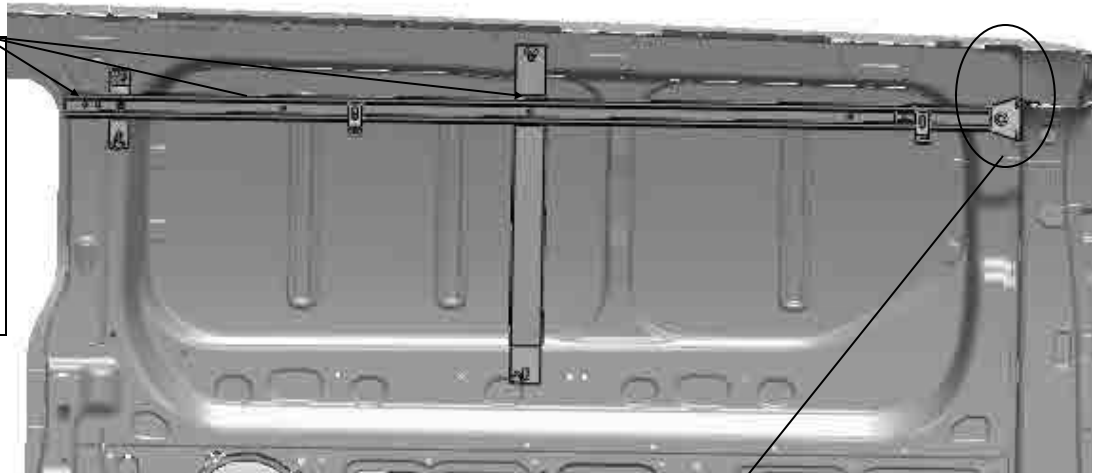


STEP 2C - INSTALLATION OF CURB SIDE UPPER RAIL

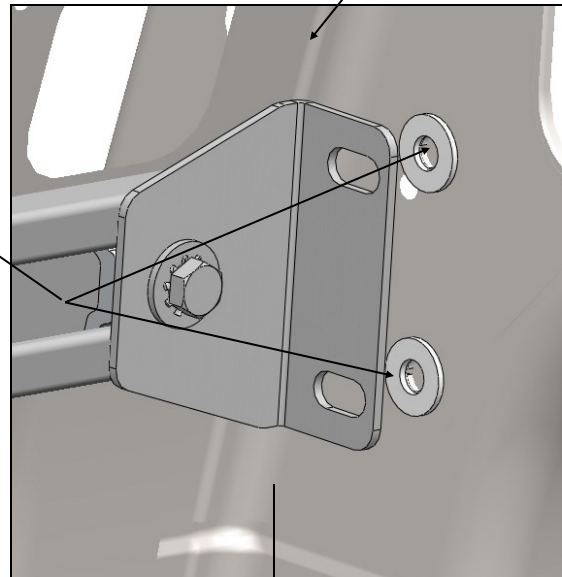


STEP 2D - FINAL INSTALLATION OF CURB SIDE UPPER RAIL

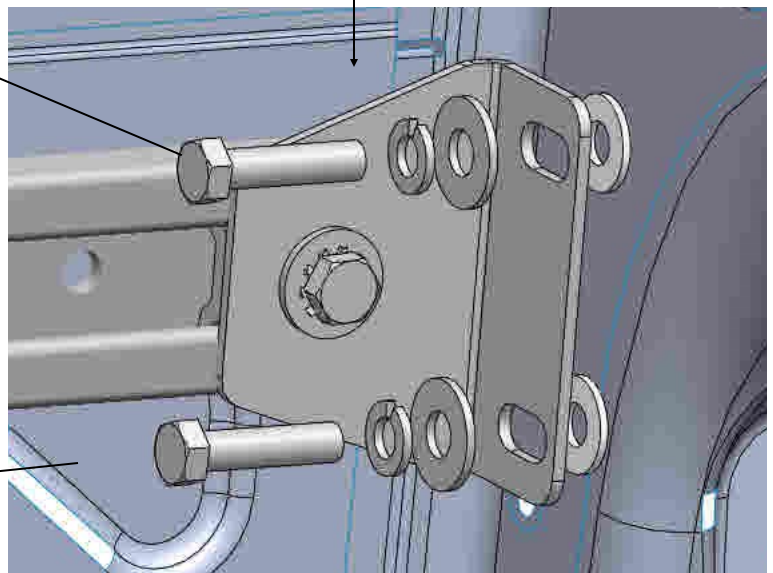
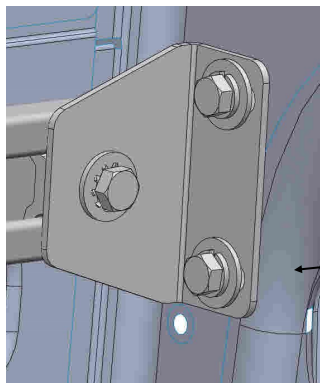
MAKE SURE THE RAIL IS STRAIGHT AND TIGHTEN TO AN APPROXIMATE HEIGHT OF 47.25" FROM THE FLOOR TO THE BOTTOM OF THE RAIL.



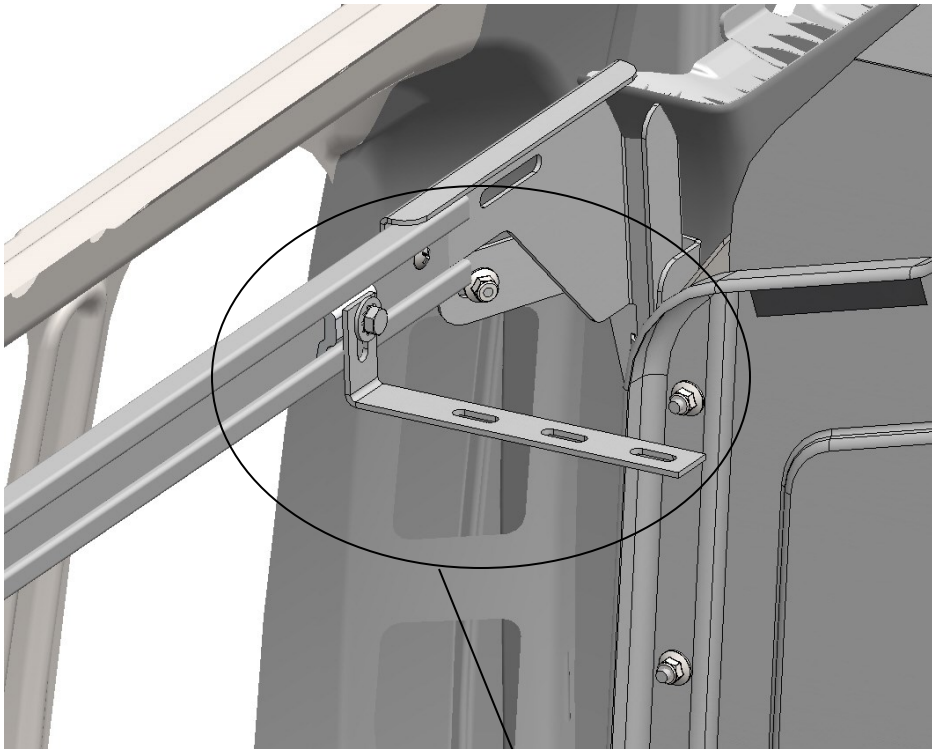
TRANSFER HOLES
OPEN HOLE UP TO 1/2" DIA
WITH DRILL STOP
ADD PLUSNUTS
FAS0091—5/16 PLUSNUT (2)



FAS0093—HEX HEAD (2)
FAS0098—LOCK WASHER (2)
FAS0086—FLAT WASHER (2)

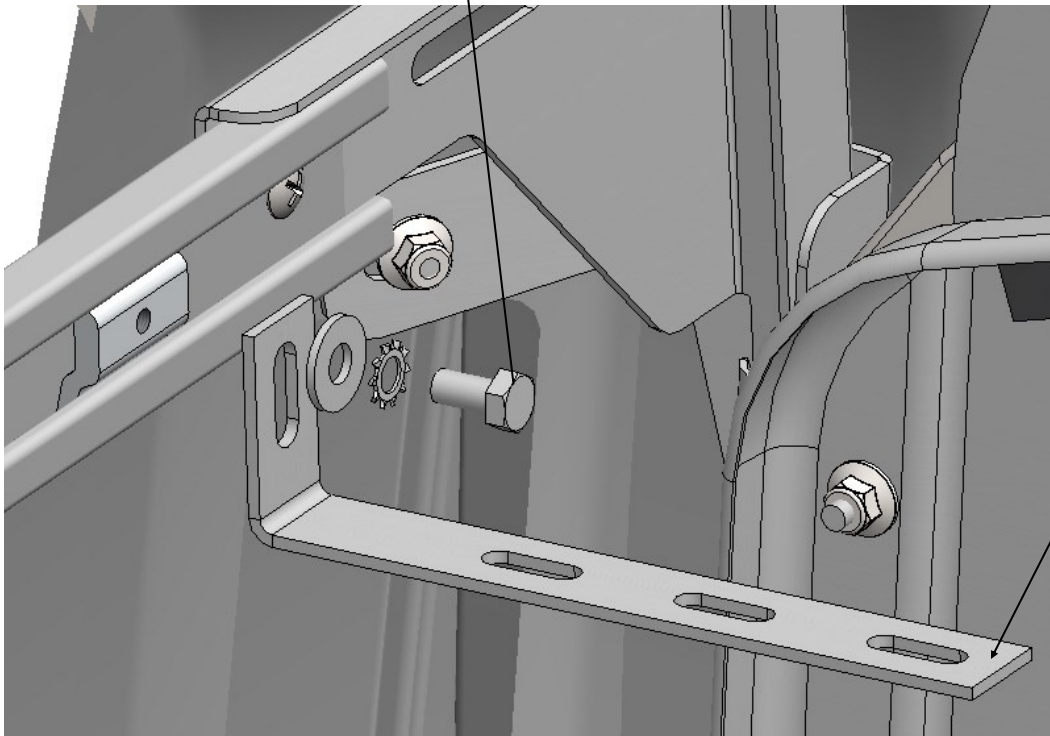


STEP 3 - ADD SHELFING BRACKETS - 4 ON STREET SIDE UPPER AND 2 ON CURB SIDE UPPER

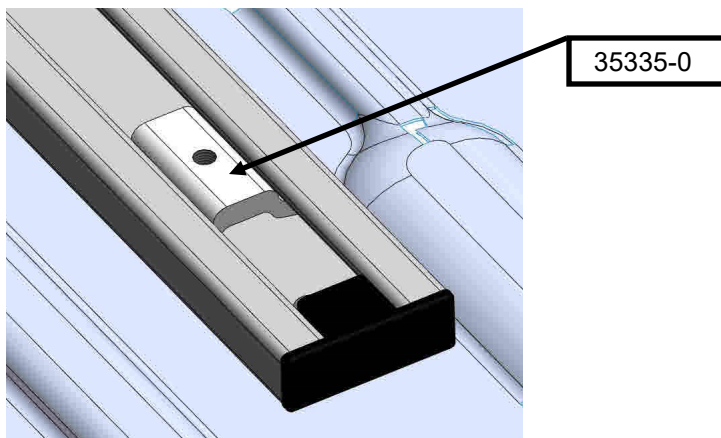
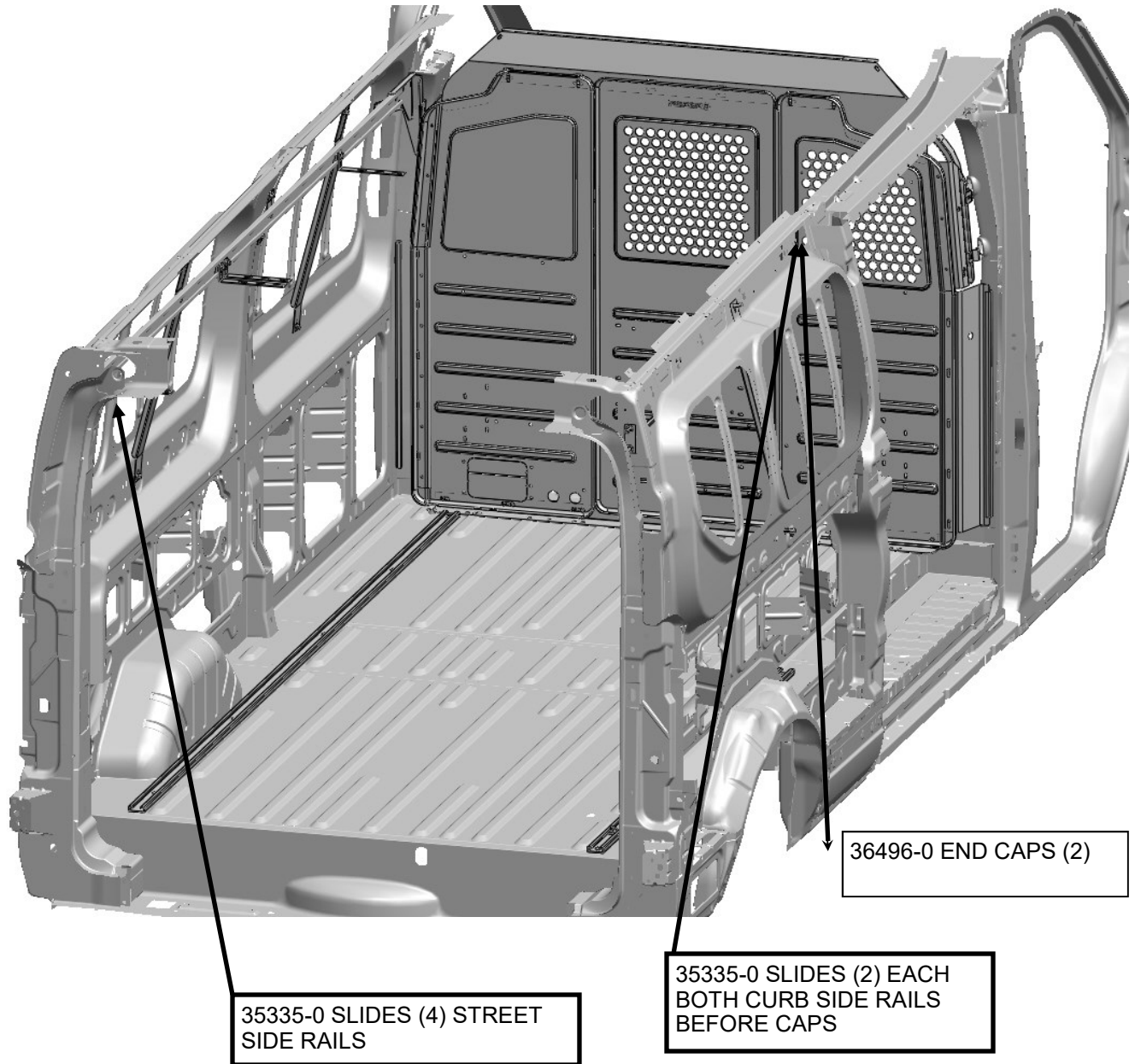


35335-0 SLIDE (6)
FAS0165— HEX HEAD (6)
FAS0085—STAR WASHER (6)
FAS0086—FLAT WASHER (6)

SHELFING BRACKET—
45339-G (6)
4 UPPER STREET SIDE
2 UPPER CURB SIDE



STEP 3 - ADD SLIDES AND END CAPS TO RAILS



YOUR INSTALLATION IS NOW COMPLETE
See Additional Pages to Re-Install the Liner



**DOUBLE CHECK ALL FASTENERS LOCATIONS TO BE SURE THAT ALL
FASTENERS ARE TIGHTENED TO SPECIFICATIONS.
YOUR INSTALLATION IS NOW COMPLETE!
STOW THIS COPY IN THE VEHICLE FOR FUTURE REFERENCES!**

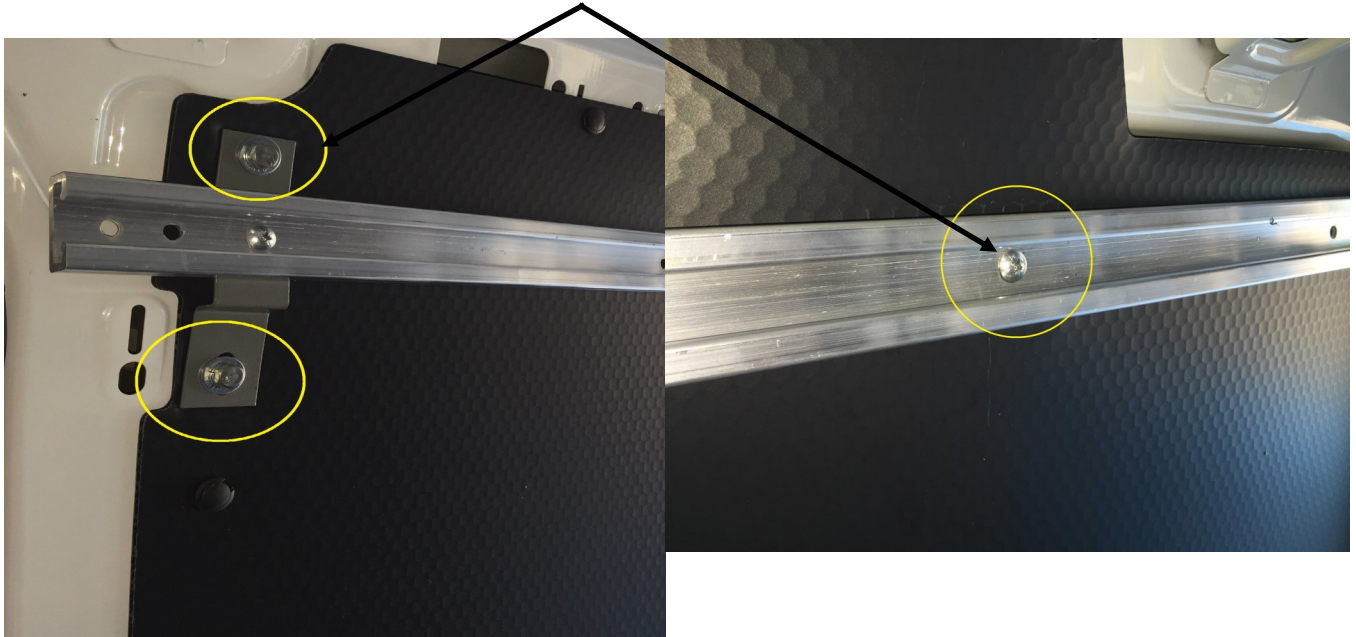
STEP 4- Re-Install OEM Upper Liner from Step 1A

Remove Rail Kit, Install Aux. Body Post and set 1/4-20 Plusnut in Body Post where Rail was Mounted. Re-Install OEM liner, add clearance holes over the Plusnuts from previous steps.



STEP 5– Re-Install Rail Kit over Liner

Place rail kit over liner and re-Install with proper fasteners as shown here



STEP 6– Street Side Rail Kit

Repeat Steps 4 & 5 for Street Side

