



PRODUCT WEIGHT

**28.50 LBS**

WIDTH x DEPTH x HEIGHT

NA x NA x NA

CAPACITY

NA

COLOR

GRAY

CATALOG NUMBER

**RK148FTHE**

**PRODUCT FEATURES**

**This product is designed for installation in the Ford Transit 148 Extended wheel base, high roof vehicle.**

**SEE PAGE 2 FOR APPLICATION NOTES AND ACCESSORIES, OTHER PRODUCTS THAT WORK WITH THIS UNIT.**

**PAGE 1 of 2**

The information contained in this document is the sole property of ADRIAN STEEL COMPANY. ADRIAN STEEL COMPANY retains the right to modify and/or change the product of its design at any time without prior notification.



**CATALOG NUMBER      RK148F THE**

***PRODUCT APPLICATION***

**This product is designed for installation in the Ford Transit 148 wheel base, mid and high roof vehicle.**

***ACCESSORIES THAT WILL WORK WITH THIS PRODUCT***

<b><i>CATALOG NUMBER</i></b>	<b><i>DESCRIPTION</i></b>
<b>HAD5059</b>	<b>HYBRID SHELVING UNIT, 14 X 59 X 50</b>
<b>HAD4459</b>	<b>HYBRID SHELVING UNIT, 14 X 59 X 44</b>
<b>HAD3259</b>	<b>HYBRID SHELVING UNIT, 14 X 59 X 32</b>
<b>HD5059</b>	<b>HD SHELF UNIT, 14 X 59 X 50</b>
<b>HD4459</b>	<b>HD SHELF UNIT, 14 X 59 X 44</b>
<b>HD3259</b>	<b>HD SHELF UNIT, 14 X 59 X 32</b>

***SPECIAL APPLICATION NOTES***

**Additional accessories may be compatible with this product.**

---

**PAGE 2 of 2**

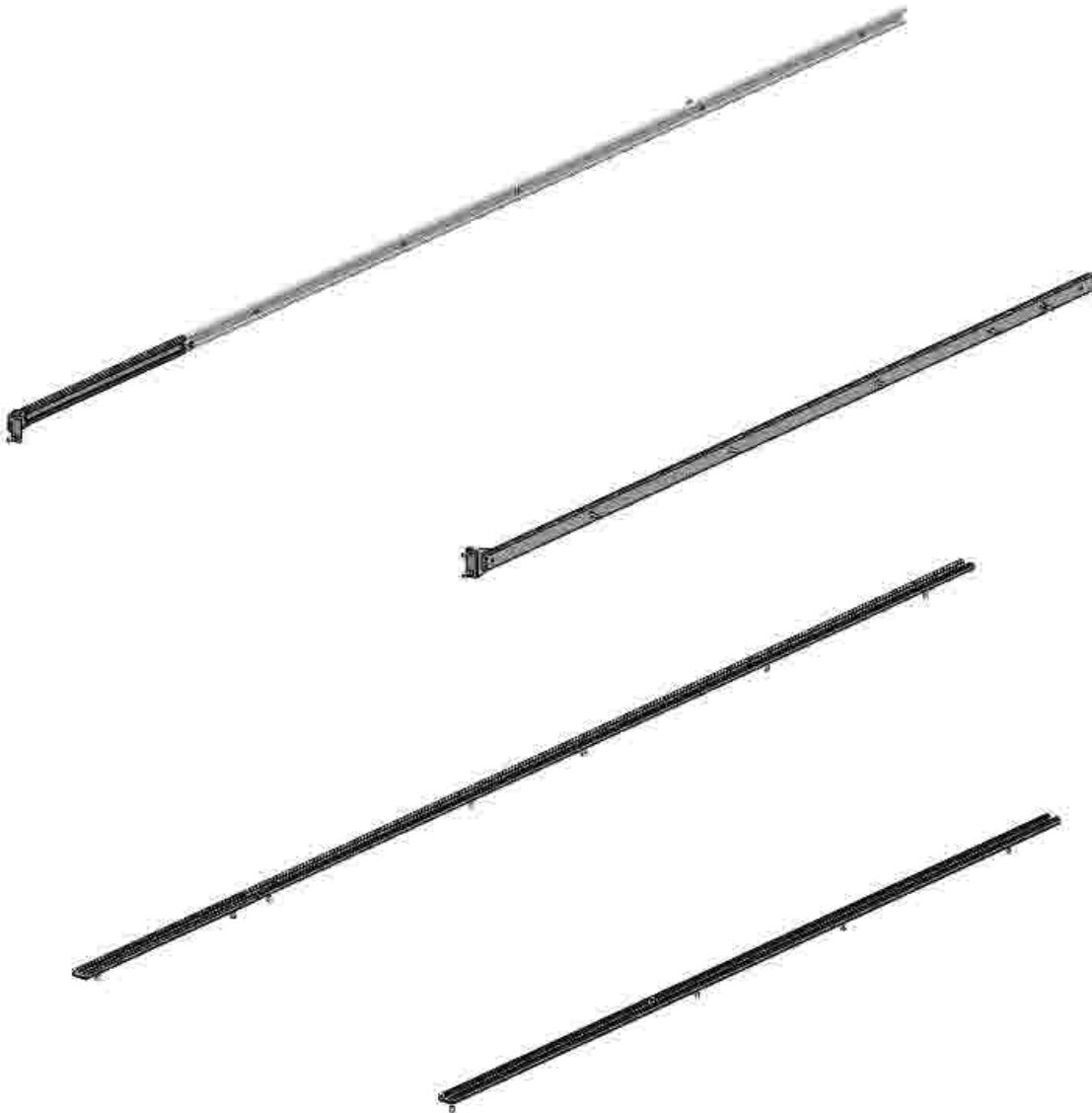
The information contained in this document is the sole property of ADRIAN STEEL COMPANY. ADRIAN STEEL COMPANY retains the right to modify and/or change the product of its design at any time without prior notification.

**Introduction / Comments:**

This rail kit is designed to fit in your 148 extended wheel base Ford Transit, high roof. This rail kit will work with the OEM liner kit, if you have this liner kit in your vehicle, the middle panels will need to be removed and saved for re-install.

**Note:**

It is advised that all fasteners used in this assembly and installation should be checked for tightness at the following intervals: @ 2-weeks and again @ 6-weeks of operation. This preventive maintenance step must be completed to ensure your Rail kit gives you long service life.



**RK148FTHE  
RAIL KIT, 148 WB EXTENDED  
FORD TRANSIT**

## - PRECAUTIONS -





 **CAUTION**   
**THE USE OF AIR IMPACT TOOLS CAN  
OVER-TORQUE FASTENERS AND  
CAUSE FASTENER FAILURE!**





 **CAUTION**   
**ALL INSTALLATION HOLES SHOULD BE SEALED  
WITH SILICON OR BUTYL SEALANT TO PREVENT  
EXHAUST FUMES FROM ENTERING THE VEHICLE!**



 **DANGER**   
**INSPECT FOR FUEL TANK, FUEL LINES, BRAKE LINES, HIGH  
VOLTAGE BATTERIES AND ELECTRICAL LINES PRIOR TO  
DRILLING TO AVOID DAMAGING CRITICAL VEHICLE SYSTEMS  
OR INJURY TO INSTALLER DURING INSTALLATION PROCESS!**



 **CAUTION**   
**TO AVOID DAMAGING THE VEHICLE ALWAYS USE DRILL  
STOPS WHEN DRILLING ANY INSTALLATION HOLES!  
ADRIAN AVAILABLE PART #'S 31121-0 (1/2" DEEP),  
31122-0 (3/4" DEEP)**



## - IMPORTANT WARRANTY REQUIREMENTS -

1. **SUBSTITUTING ADRIAN STEEL SPECIFIED FASTENERS FOR ASSEMBLY AND/OR INSTALLATION WILL VOID YOUR PRODUCT WARRANTY.**
2. **ALL HOLES DRILLED INTO VEHICLE SHOULD HAVE THE RAW METAL EDGES SEALED WITH A SELF-ETCHING PRIMER TO RESIST CORROSION AND POTENTIAL FASTENER POINT FAILURE.**
3. **ALL FASTENERS USED IN THE INSTALLATION OF THIS PRODUCT SHOULD BE TIGHTENED TO THE TORQUE(S) SPECIFIED IN THESE INSTRUCTIONS.**
4. **THESE INSTRUCTIONS SHOULD BE KEPT WITH THE VEHICLE.**

### THE BASIC TOOLS NEEDED FOR MOST INSTALLATIONS



DRILL



DRILL BIT WITH  
STOP



RATCHET, SOCKETS  
AND/OR WRENCHES



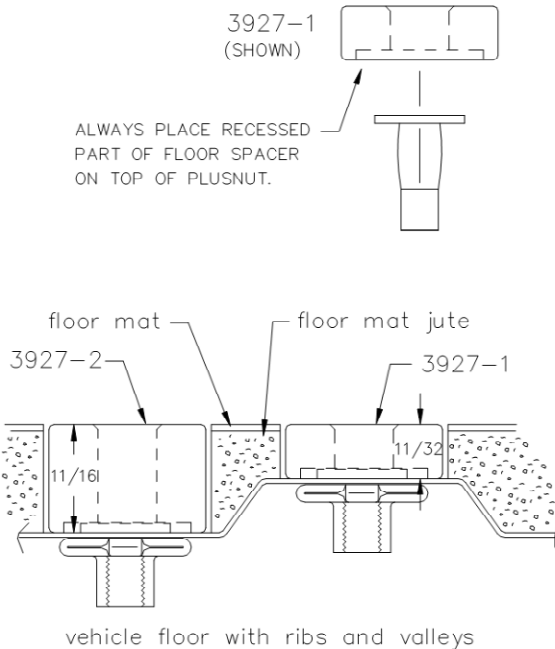
SCREWDRIVERS



MEASURING TAPE

ADDITIONAL TOOLS MAY BE NEEDED FOR THIS INSTALLATION AND THEY WILL BE IDENTIFIED IN THE STEPS THAT FOLLOW.

If your vehicle contains carpet or a rubber floor mat you will need to prepare the mounting location. Position the product to be installed into the vehicle and once you are satisfied with the mounting locations, mark the mounting locations. Using a 1-3/16" diameter carpet cutter (P/N: 31183-0). Select the appropriate floor spacers as shown in the illustration. Set those aside for use later into the installation process. Using the correct drill bit size for the selected plusnut, drill the mounting holes in the vehicle sheet metal to prepare for installing the plusnuts. If you are thru-bolting at any of the locations simply drill a hole that is 1/16" larger than the bolt size(s) for those locations. Once you have drilled the holes into the vehicle, the raw metal edges should be sealed using a self-etching primer to resist corrosion and potential fastener point failure.



A PLUSNUT (RIVNUT) SETTING TOOL IS REQUIRED FOR PLUSNUT (RIVNUT) INSTALLATION AND IS NOT SUPPLIED WITH THIS KIT. OR USE AN AIR POWERED PLUSNUT SETTING GUN.

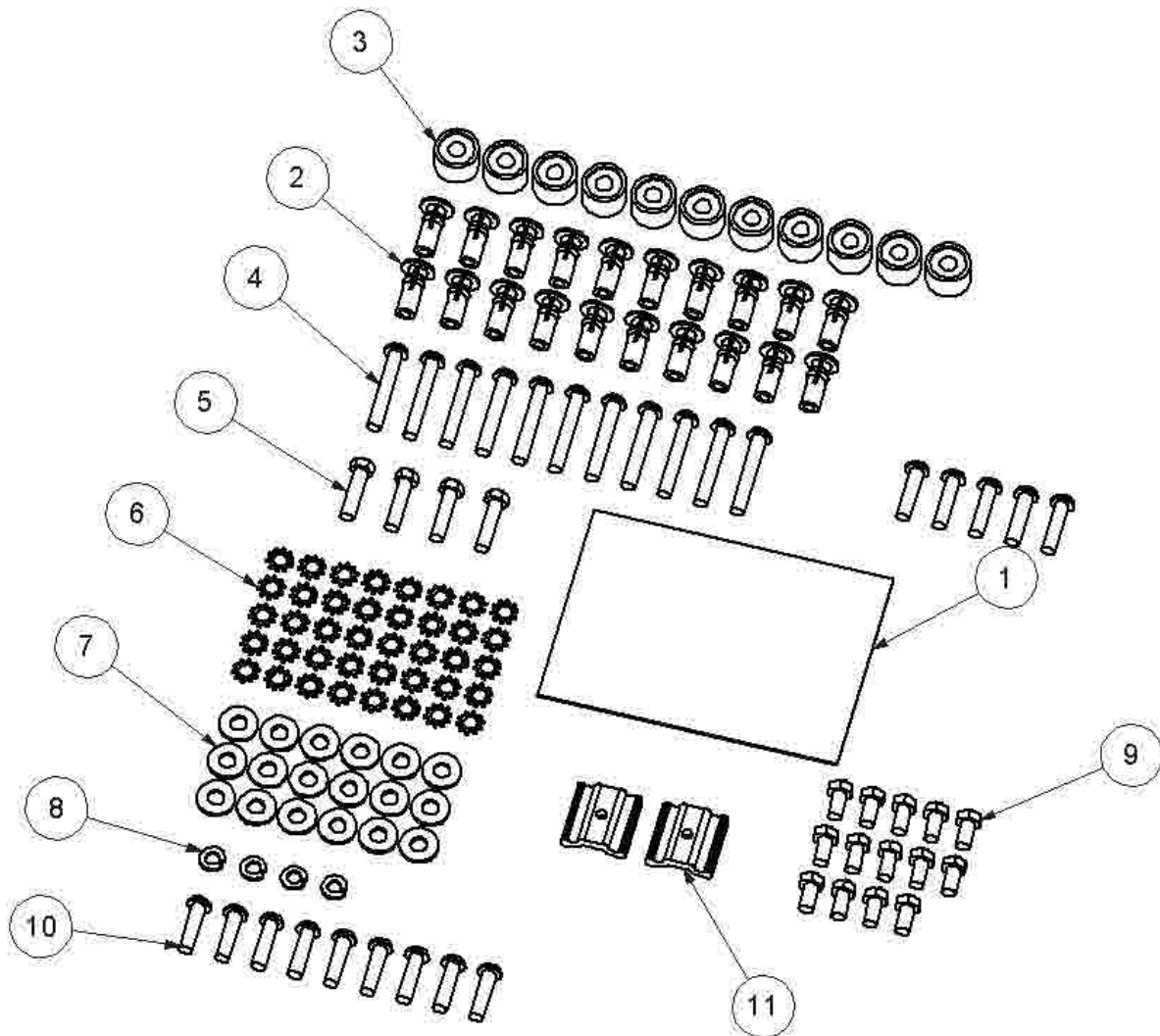
1/4-20UNC Plusnut (FAS0052) Use 3/8" dia. drill w/stop  
 FAS0080 SCREW, HXHD, 1/4-20UNCx2.00", G8  
 FAS0067 WASHER, FLAT, 1/4"ID  
 22200-0 PLUSNUT TOOL

5/16-18UNC Plusnut (FAS0091) Use 1/2" dia. drill w/stop  
 FAS0095 SCREW, HXHD, 5/16-18UNCx2.00", G8  
 FAS0086 WASHER, FLAT, 5/16"ID  
 22200-0 PLUSNUT TOOL

Place barrel of the plusnut body in sheet metal thru hole until flange is flush with sheet metal. Using a 9/16" combination wrench of plusnut tool body and a second hand wrench, ratchet, or air tool, rotate the hex bolt head CW to draw plus nut flanges up (set the plusnut).

## Assembly and Installation Fastener Identification Sheet ( BAG45325 )

ITEM NO.	PART NUMBER	DESCRIPTION	QTY.
1	BAG0507-A	5" x 7" 3MIL AUTOBAG	1
2	FAS0091	Plusnut, 5/16	20
3	03927-2	Tall Floor Spacer	11
4	FAS0048	Screw, Button Hd Hex Soc, 5/16-18X 2, BLK OXIDE	11
5	FAS0093	Screw, Hex Hd, 5/16-18x1.25	4
6	FAS0085	Washer, Lock, Ext. Tooth, 5/16	40
7	FAS0086	WASHER,FLAT USS 5/16 ZP	18
8	FAS0098	Washer, Lock, Split, 5/16, Zinc Plate	4
9	FAS0165	Screw, Hex Hd, 5/16-18x.625	14
10	FAS0741	Screw, Button Hd Hex Soc, M8-1.25 X 30	9
11	35335-0	SLIDE	2
12	FAS0708	Screw, Button Hd Hex Soc, 5/16-18X1.25, BLK OXIDE	5

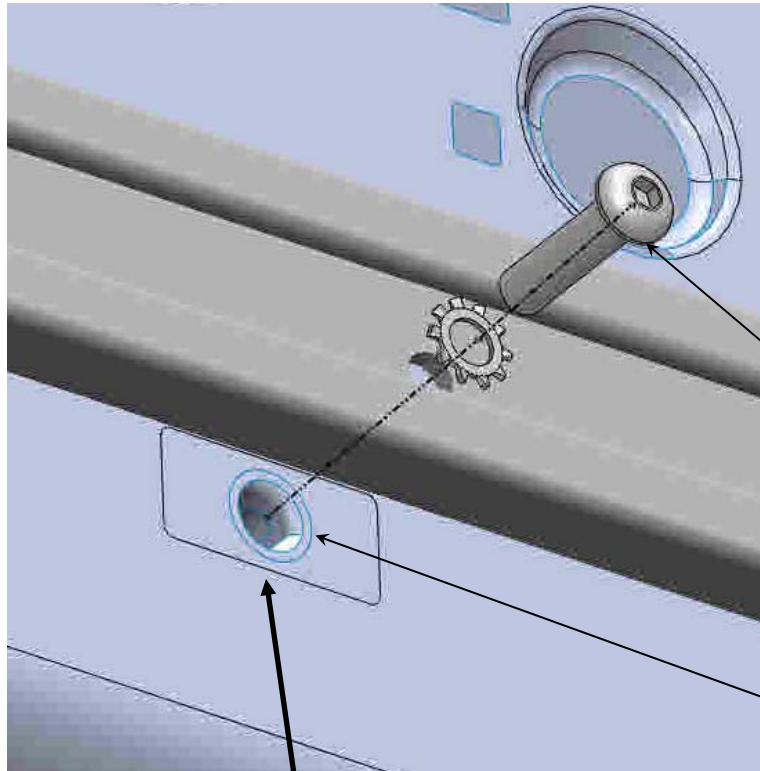


**STEP 1A —VEHICLES WITH OEM LINER KITS—NEED TO REMOVE THE MIDDLE PANELS ON THE STREET AND CURB SIDE. SAVE THESE PANELS FOR RE-INSTALL LATER IF NEEDED.**



GENERIC PICTURE OF VEHICLE AND  
LINER KIT  
SHOWING RAIL KIT INSTALLED FOR  
REFERENCE ONLY

**STEP 1B STREET SIDE UPPER RAIL**

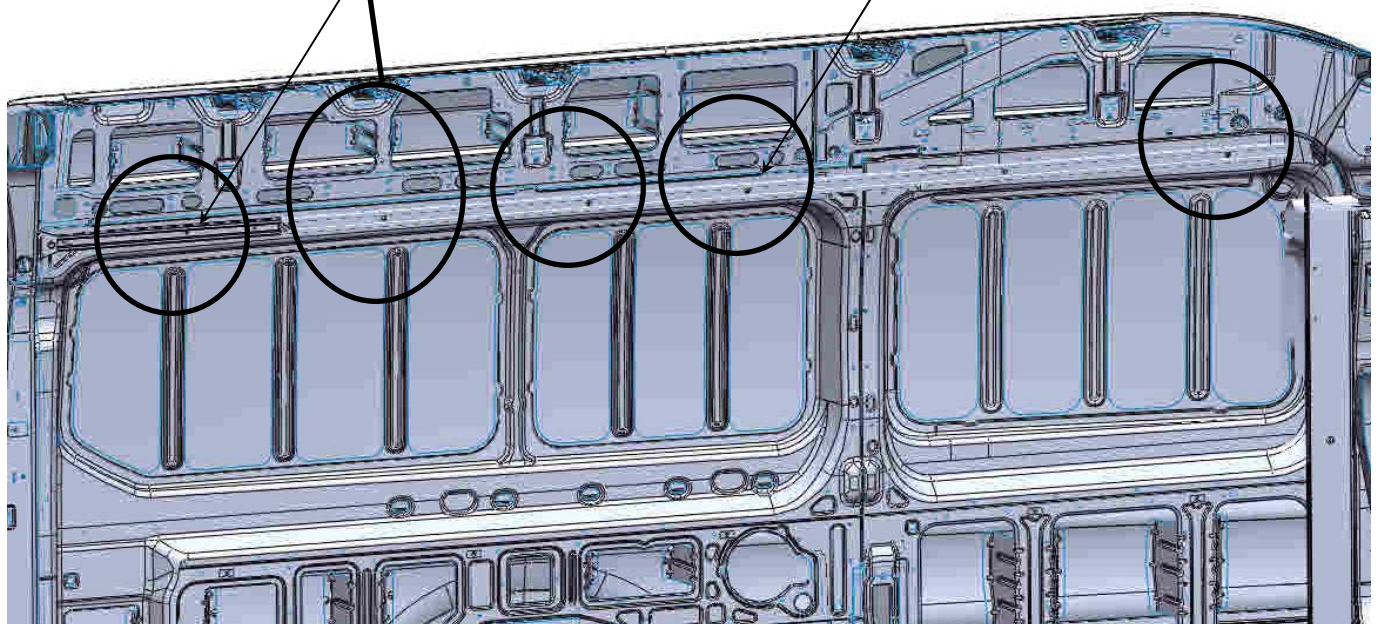


FAS0085 - 5/16 STAR WASHER (5)  
FAS0741 - M8X1.25 X 30 LG (5)

EXISTING M8X1.25 INSERT  
(5) LOCATIONS USED  
STREET SIDE UPPER

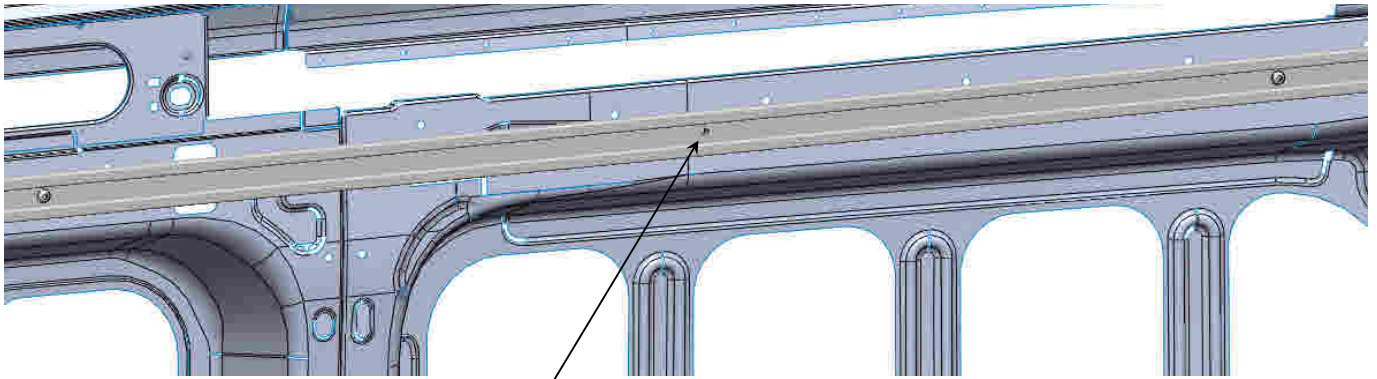
47092 - 28 1/2" LG RAIL

47081 - 119" LG RAIL





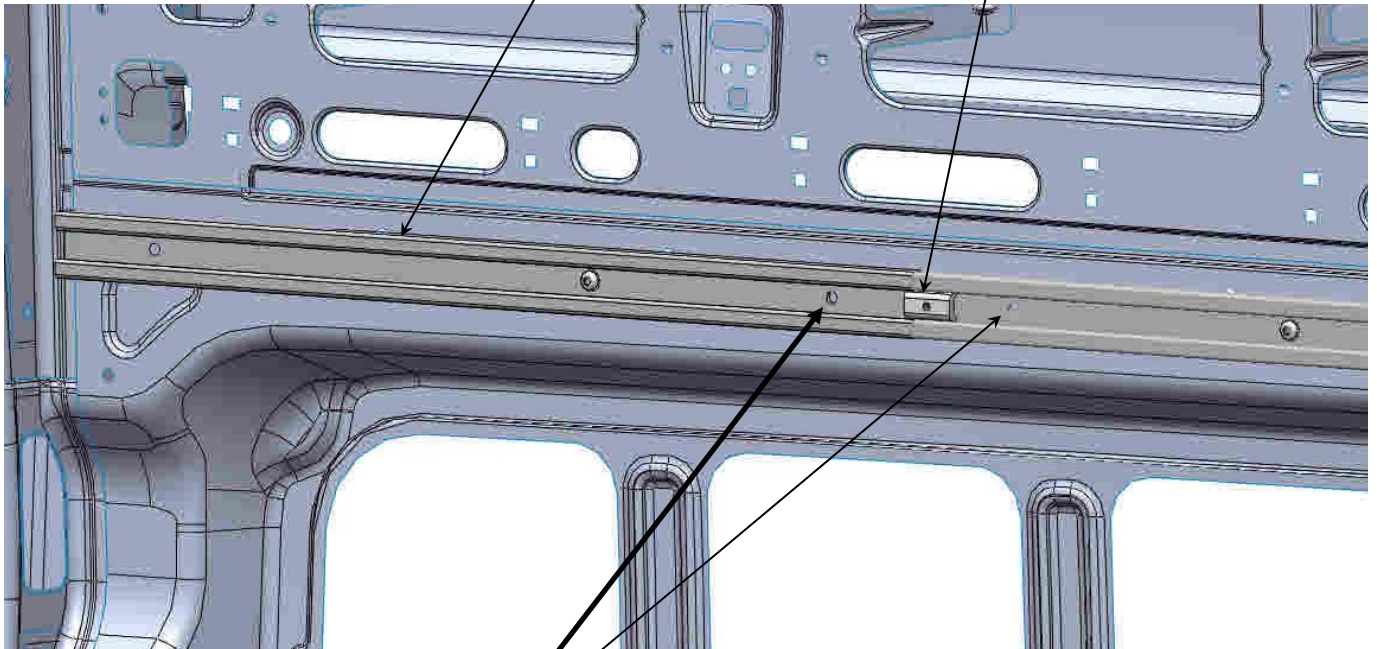
**STEP 1C STREET SIDE UPPER RAIL -LOCATE AND TRANSFER HOLES- REMOVE RAIL**



TRANSFER HOLE  
OPEN HOLE UP TO 1/2" DIA  
WITH DRILL STOP  
ADD PLUSNUT  
FAS0091—5/16 PLUSNUT

47092 - 28 1/2" LG RAIL

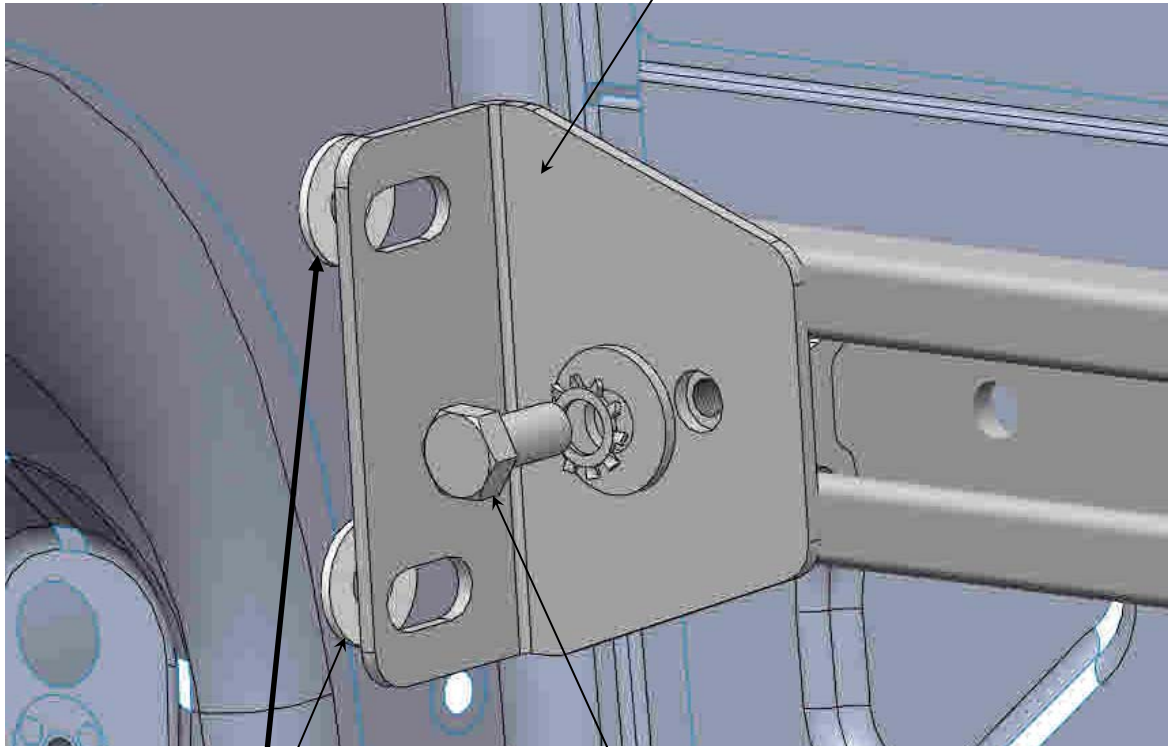
USE 35335-0 SLIDE  
TO ALIGN THE RAILS.



TRANSFER HOLES  
OPEN HOLE UP TO 1/2" DIA  
WITH DRILL STOP  
ADD PLUSNUTS  
FAS0091—5/16 PLUSNUT (2)

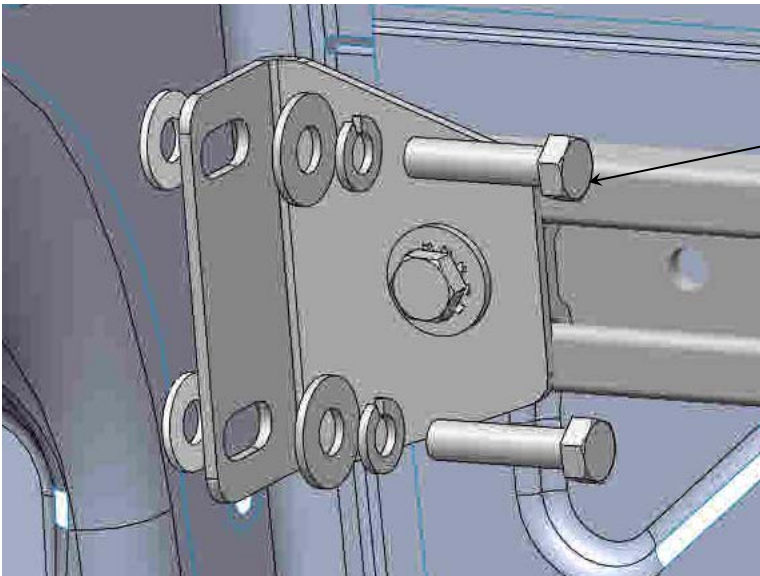
**STEP 1D STREET SIDE UPPER RAIL -LOCATE AND TRANSFER HOLES- REMOVE RAIL**

47078-G  
D-PILLAR MTG PLATE



TRANSFER HOLES  
OPEN HOLE UP TO 1/2" DIA  
WITH DRILL STOP  
ADD PLUSNUTS  
FAS0091—5/16 PLUSNUT

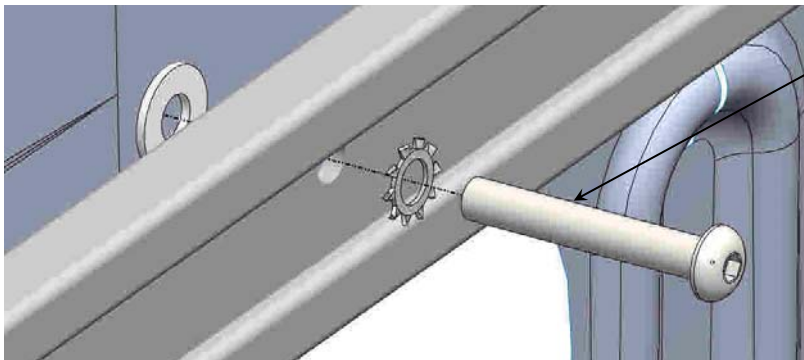
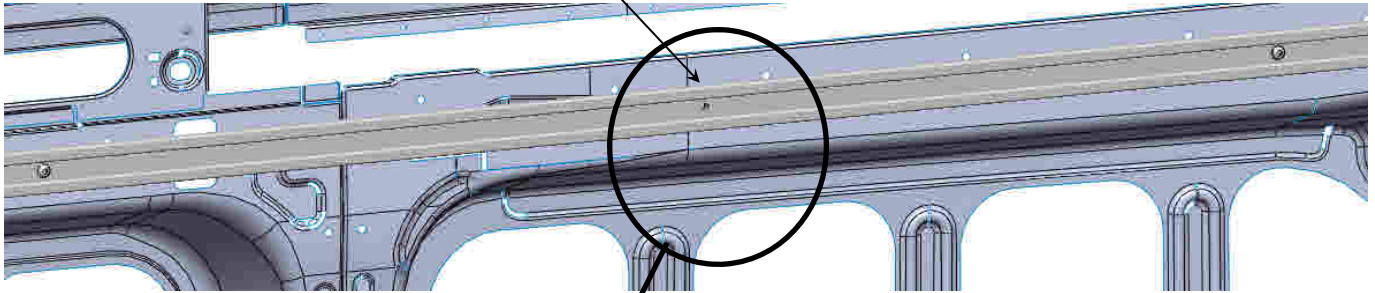
35335-0 SLIDE  
FAS0165— HEX HEAD  
FAS0085—STAR WASHER  
FAS0086—FLAT WASHER



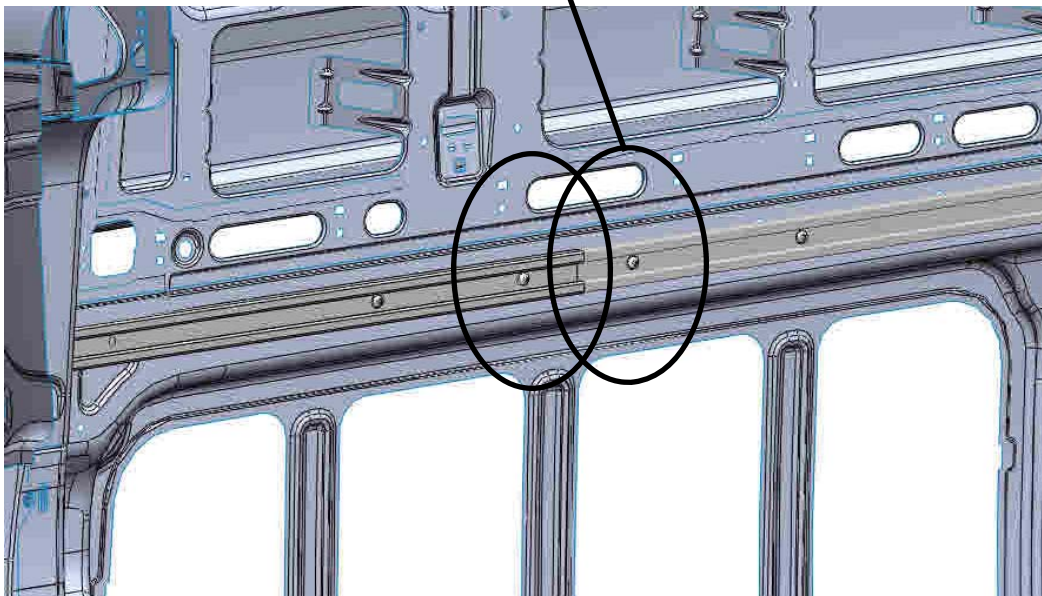
FAS0093— HEX HEAD (2)  
FAS0098—LOCK WASHER (2)  
FAS0086—FLAT WASHER (2)

### STEP 1E - FINAL INSTALLATION OF STREET SIDE UPPER RAIL

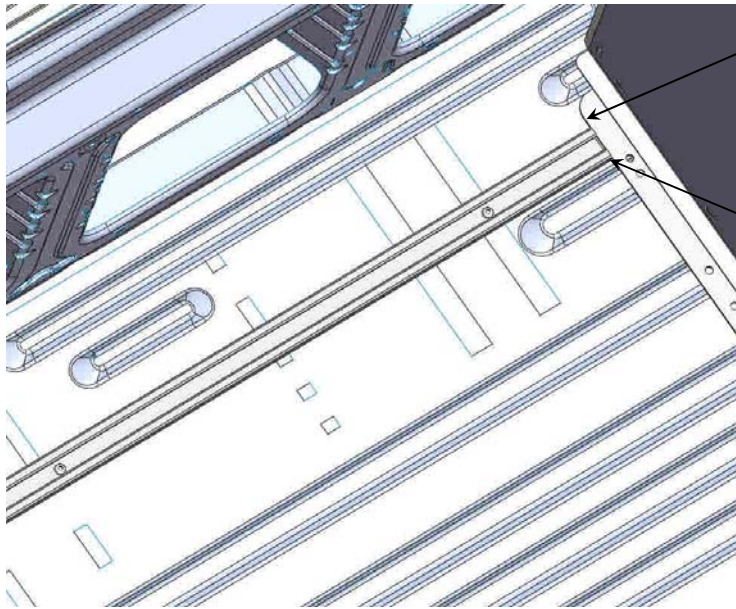
FROM PREVIOUS PAGE  
AFTER SETTING PLUSNUT



FAS0085— STAR WASHER (3)  
FAS0708—BUTTON HEAD (3)



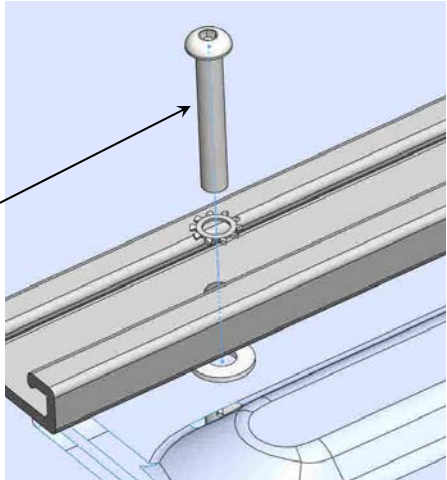
**STEP 2 - ADD STREET SIDE FLOOR RAIL WITH ADRIAN PARTITION**



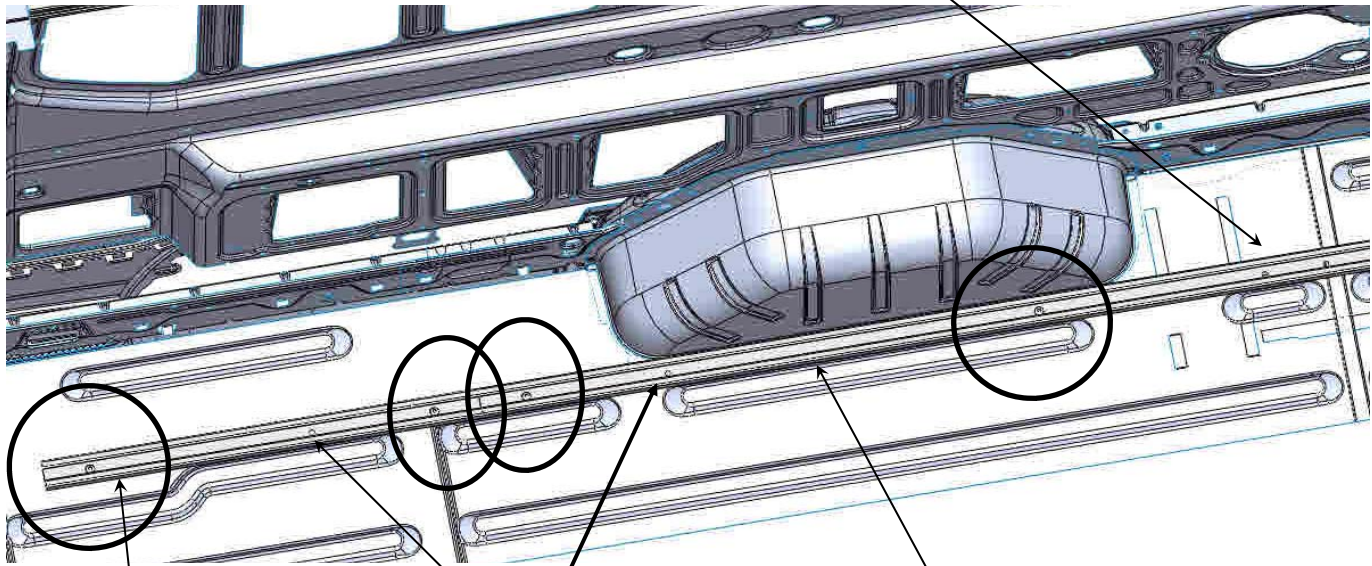
**INSTALLED  
ADRIAN PARTITION  
FOOTER RAIL.**

TOUCHING TO  
APPROXIMATELY 1/8" AWAY  
FROM FOOTER RAIL

FAS0091—PLUSNUT (6)  
FAS0048— BUTTON HD (6)  
FAS0085—STAR WASHER (6)



**SKIP THESE HOLES**

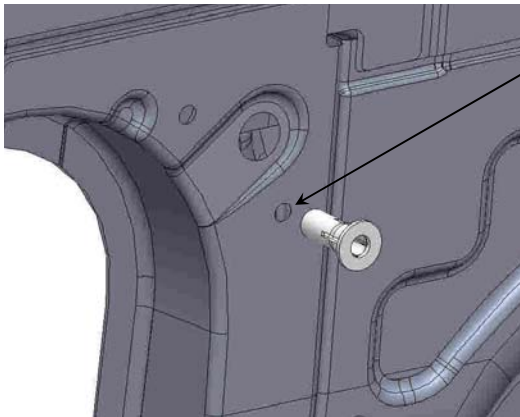


47092 - 28 1/2" LG RAIL

**SKIP THIS HOLE**

47081—RAIL X 119 LG  
UP AGAINST INSIDE RIB

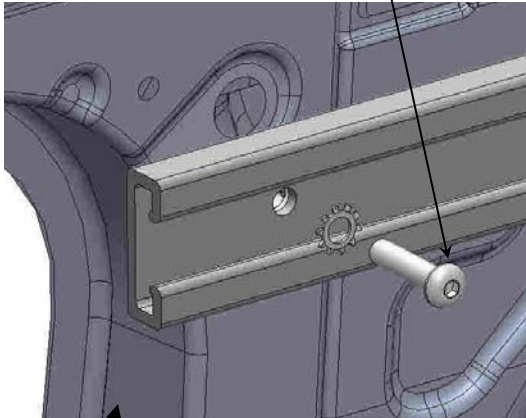
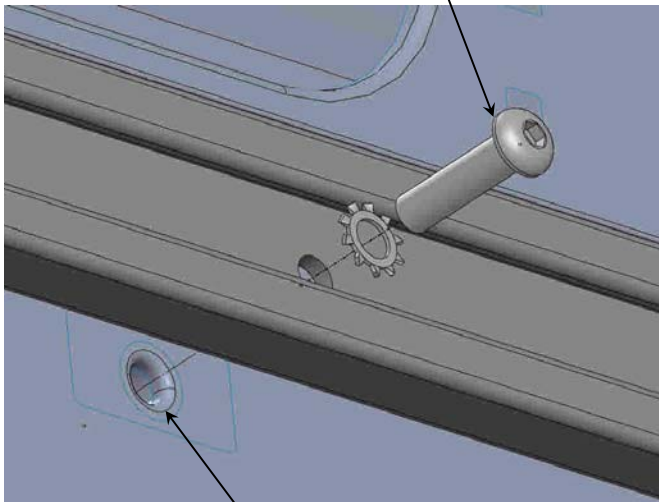
**STEP 3 CURB SIDE UPPER RAIL**



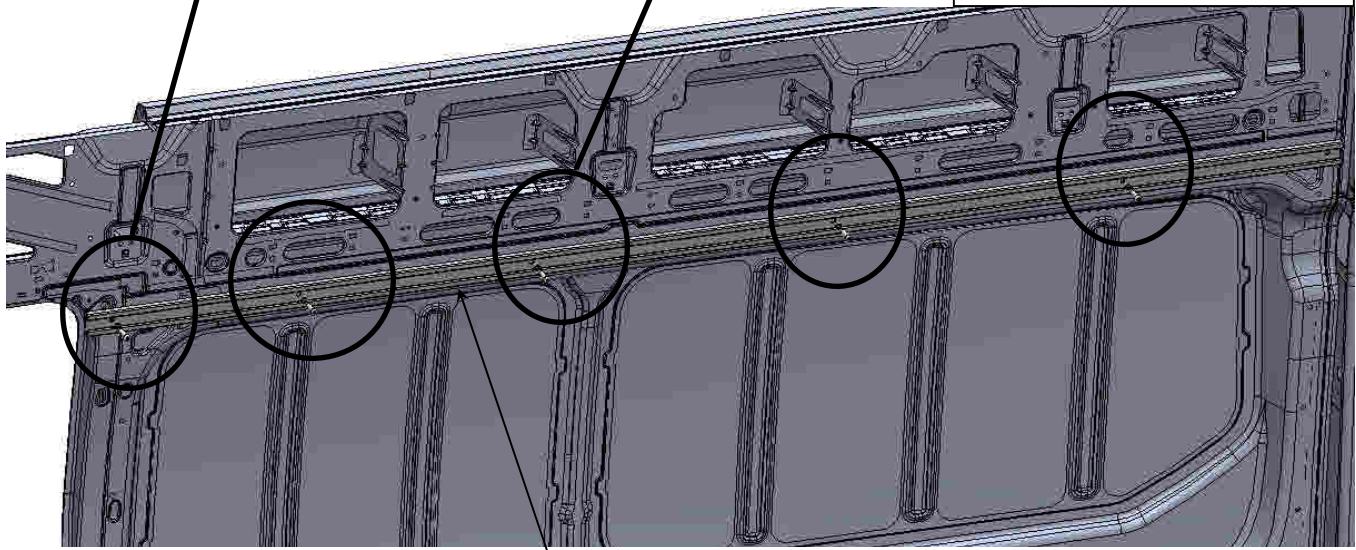
EXISTING HOLE  
OPEN TO 1/2 DIA HOLE  
USE DRILL WITH DRILL STOP  
FAS0091—5/16 PLUS NUT (1)

FAS0085 - 5/16 STAR WASHER (4)  
FAS0741 - M8X1.25 X 30 LG (4)

FAS0085 - 5/16 STAR WASHER (1)  
FAS0708 - 5/16 X 1.25 LG (1)

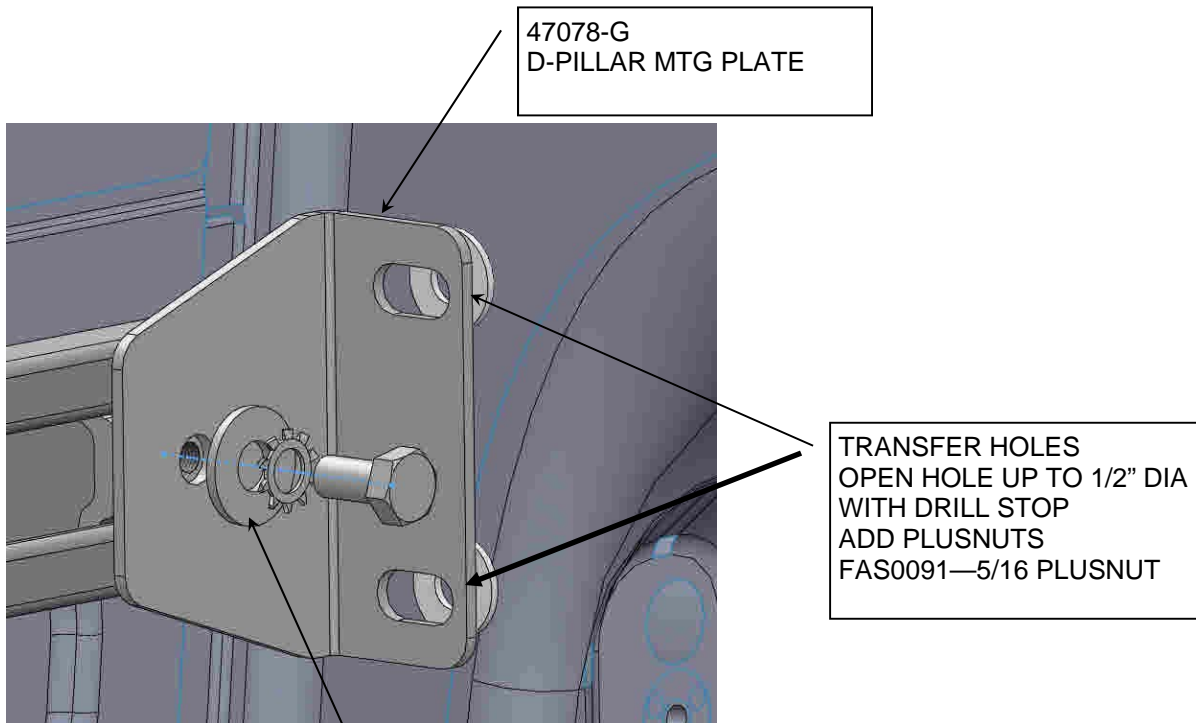


EXISTING M8X1.25 INSERT  
(4) LOCATIONS USED  
CURB SIDE UPPER



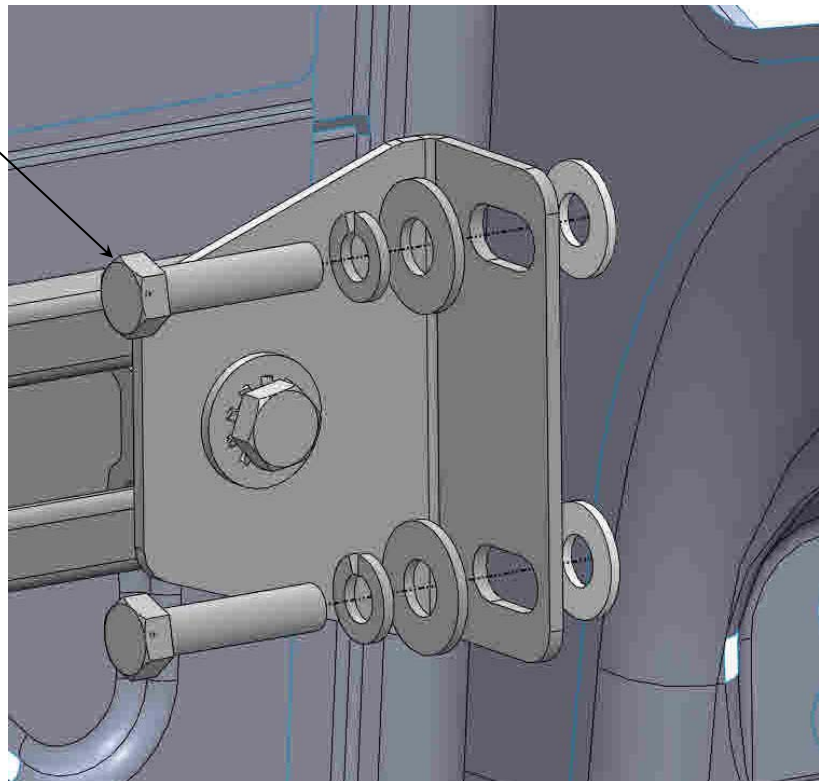
47093—RAIL X 100.93 LG

### STEP 3B - LOCATE AND TRANSFER HOLES



35335-0 SLIDE  
FAS0165— HEX HEAD  
FAS0085—STAR WASHER  
FAS0086—FLAT WASHER

FAS0093— HEX HEAD (2)  
FAS0098—LOCK WASHER (2)  
FAS0086—FLAT WASHER (2)



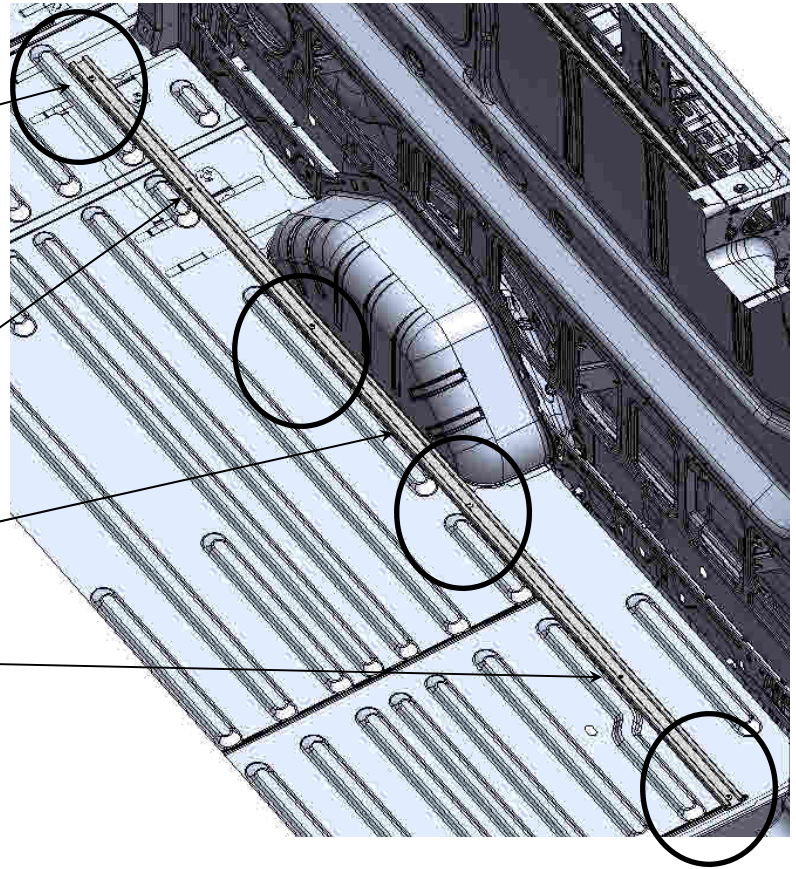
**STEP 4 - ADD CURB SIDE FLOOR RAIL**

TRANSFER HOLE LOCATIONS  
(4) PLACES  
REMOVE RAIL  
DRILL AND SET PLUSNUTS  
FAS0091—5/16 PLUSNUT

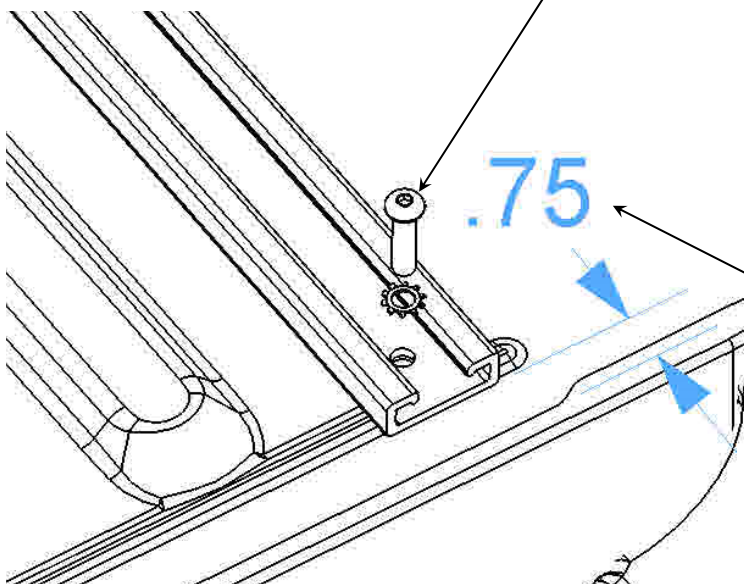
**DO NOT USE THIS HOLE**

47093—RAIL X 100.93 LG  
UP AGAINST INSIDE RIB

**DO NOT USE THIS HOLE**

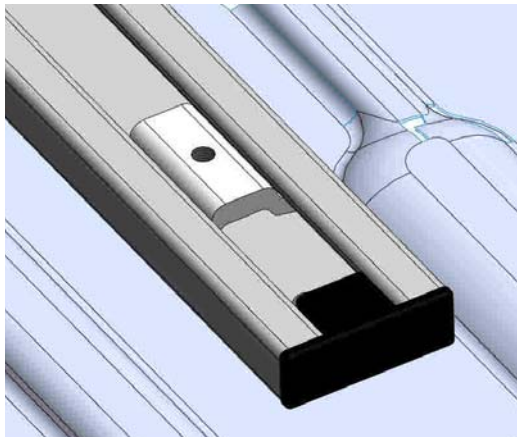
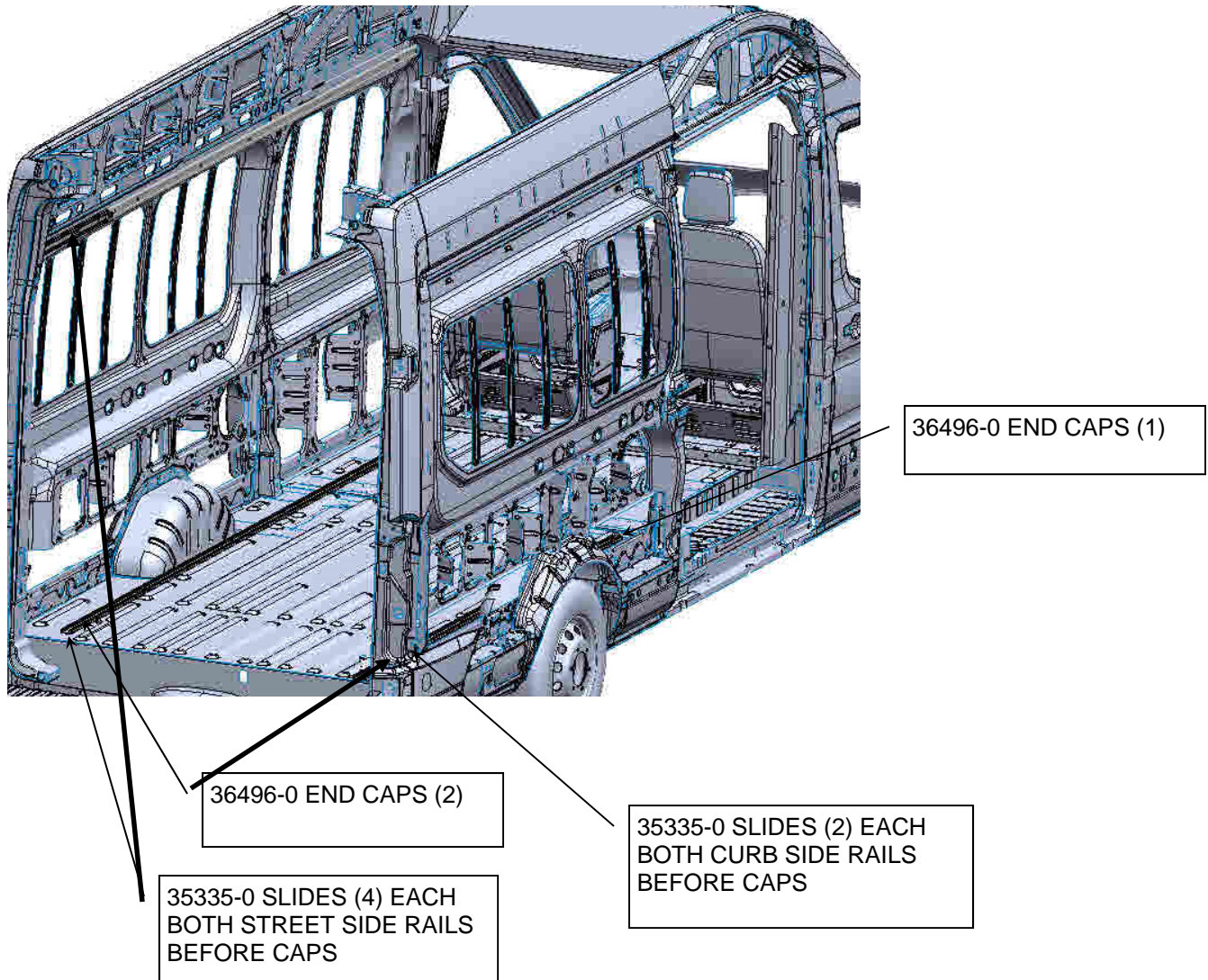


FAS0091—PLUSNUT (4)  
FAS0048—BUTTON HD (4)  
FAS0085—STAR WASHER (4)



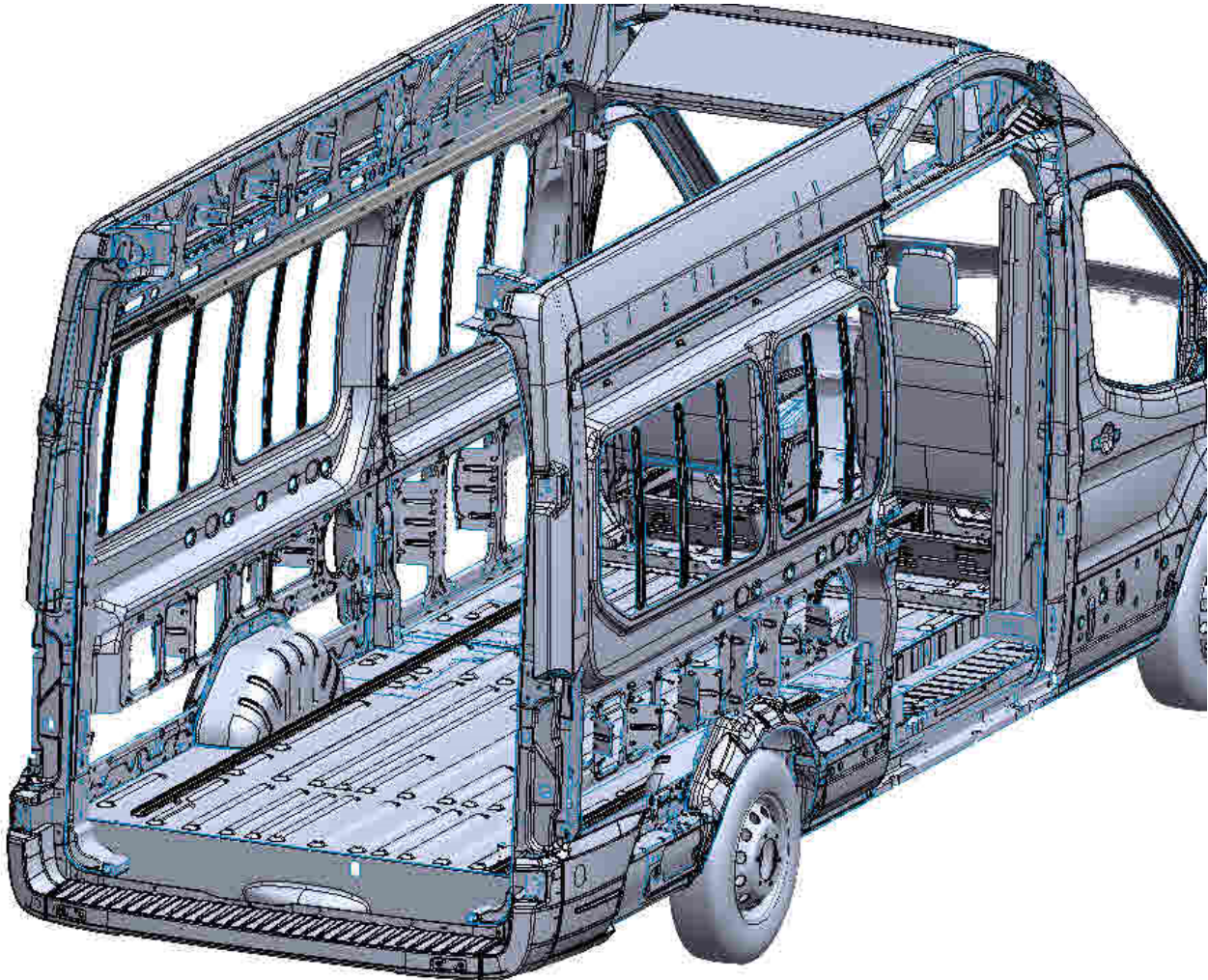
APPROX 3/4" FROM SEAM  
LINE UP WITH TOP RAIL

### STEP 5 - ADD SLIDES AND END CAPS TO RAILS





**YOUR INSTALLATION IS NOW COMPLETE  
SEE ADDITIONAL PAGES TO RE-INSTALL THE OEM LINER**



**DOUBLE CHECK ALL FASTENERS LOCATIONS TO BE SURE THAT ALL  
FASTENERS ARE TIGHTENED TO SPECIFICATIONS.  
YOUR INSTALLATION IS NOW COMPLETE!  
STOW THIS COPY IN THE VEHICLE FOR FUTURE REFERENCES!**

## STEP 6 - Re-Install OEM Middle Liner Pieces from Step 1A

Remove Upper Rail Kit, Hold up the OEM Liner and add clearance holes over the Plusnuts and OEM Fastening locations from previous steps. Re-Install OEM Liner Pieces completely.



## STEP 7 - Re-Install Rail Kit over top of the OEM Liner.