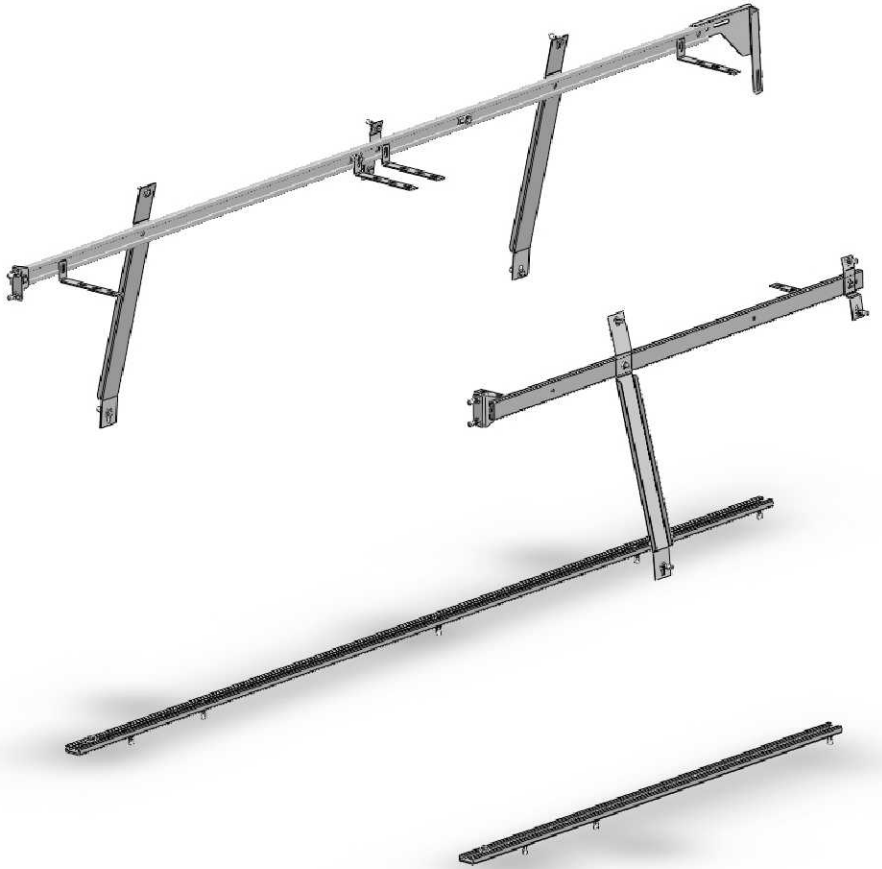




ADRIAN STEEL®

Cargo Management Solutions for Commercial Vehicles

RAIL KIT, TRANSIT, 130 WB, STD



PRODUCT WEIGHT

26LBS

WIDTH x DEPTH x HEIGHT

NA x NA x NA

CAPACITY

NA

COLOR

GRAY

CATALOG NUMBER

RK130FTS

PRODUCT FEATURES

This product is designed for installation in the Ford Transit 130 wheel base, Standard roof vehicle.

SEE PAGE 2 FOR APPLICATION NOTES AND ACCESSORIES, OTHER PRODUCTS THAT WORK WITH THIS UNIT.

PAGE 1 of 2

The information contained in this document is the sole property of ADRIAN STEEL COMPANY. ADRIAN STEEL COMPANY retains the right to modify and/or change the product of its design at any time without prior notification.



CATALOG NUMBER **RK130FTS**

PRODUCT APPLICATION

This product is designed for installation in the Ford Transit 130 wheel base, Standard roof vehicle.

ACCESSORIES THAT WILL WORK WITH THIS PRODUCT

<i>CATALOG NUMBER</i>	<i>DESCRIPTION</i>
AD44FP	AD SHELVING UNIT, 14 X 46 X 44 Wide

SPECIAL APPLICATION NOTES

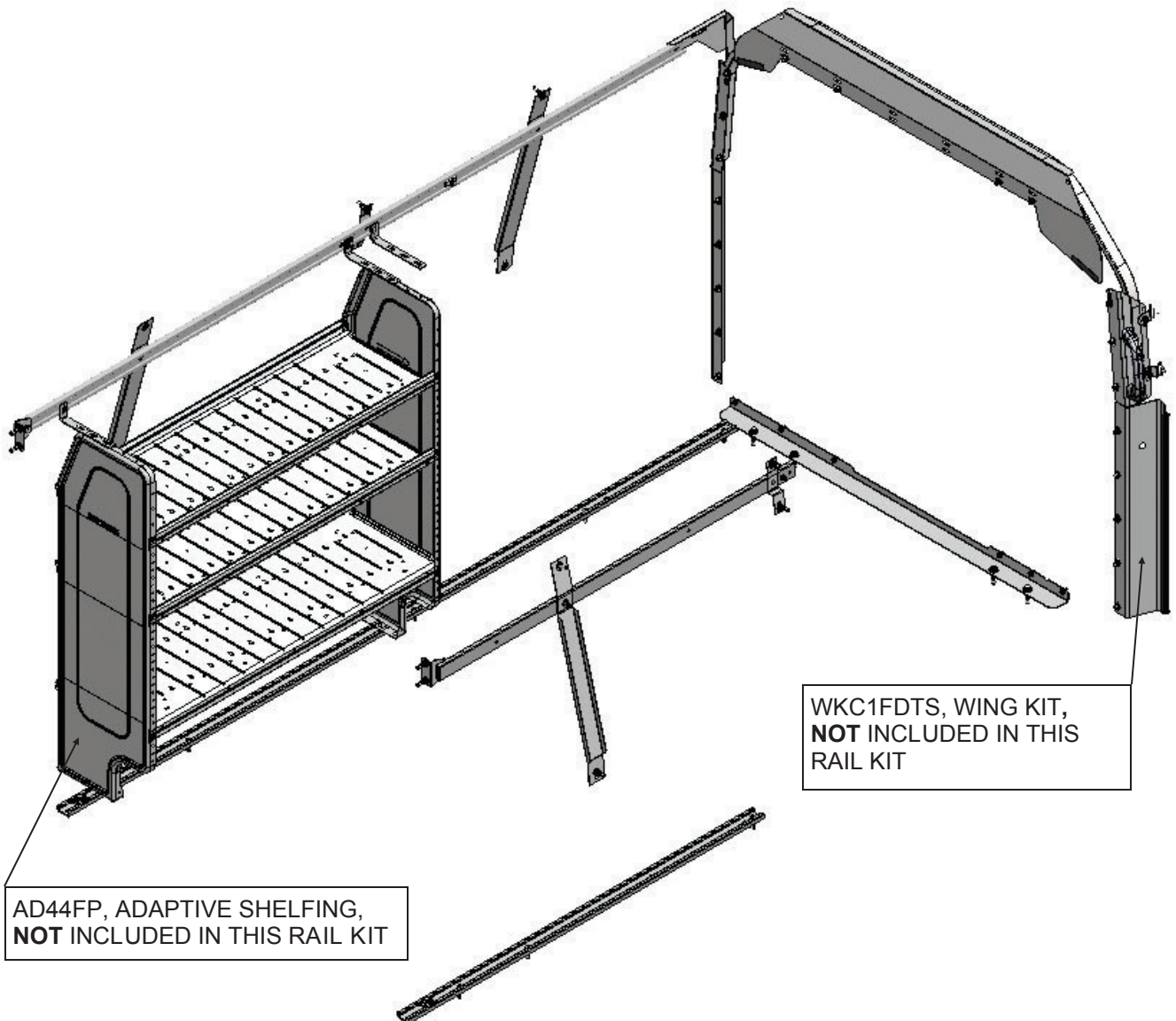
Additional accessories may be compatible with this product. Please consult with ADRIAN STEEL ENGINEERING to review specific applications not listed here.

Introduction / Comments:

This rail kit is designed to fit in your 130 wheel base Ford Transit, Standard roof.

Note:

It is advised that all fasteners used in this assembly and installation should be checked for tightness at the following intervals: @ 2-weeks and again @ 6-weeks of operation. This preventive maintenance step must be completed to ensure your Partition gives you long service life.



**RK130FTS
RAIL KIT, 130 WB
FORD TRANSIT**

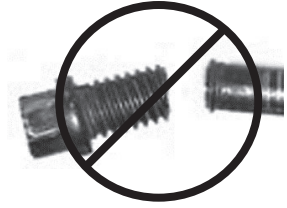
- PRECAUTIONS -



CAUTION



THE USE OF AIR IMPACT TOOLS CAN OVER-TORQUE FASTENERS AND CAUSE FASTENER FAILURE!



CAUTION



ALL INSTALLATION HOLES SHOULD BE SEALED WITH SILICON OR BUTYL SEALANT TO PREVENT EXHAUST FUMES FROM ENTERING THE VEHICLE!



DANGER



INSPECT FOR FUEL TANK, FUEL LINES, BRAKE LINES, HIGH VOLTAGE BATTERIES AND ELECTRICAL LINES PRIOR TO DRILLING TO AVOID DAMAGING CRITICAL VEHICLE SYSTEMS OR INJURY TO INSTALLER DURING INSTALLATION PROCESS!



CAUTION



TO AVOID DAMAGING THE VEHICLE ALWAYS USE DRILL STOPS WHEN DRILLING ANY INSTALLATION HOLES! ADRIAN AVAILABLE PART #'S 31121-0 (1/2" DEEP), 31122-0 (3/4" DEEP)



- IMPORTANT WARRANTY REQUIREMENTS -

1. SUBSTITUTING ADRIAN STEEL SPECIFIED FASTENERS FOR ASSEMBLY AND/OR INSTALLATION WILL VOID YOUR PRODUCT WARRANTY.
2. ALL HOLES DRILLED INTO VEHICLE SHOULD HAVE THE RAW METAL EDGES SEALED WITH A SELF-ETCHING PRIMER TO RESIST CORROSION AND POTENTIAL FASTENER POINT FAILURE.
3. ALL FASTENERS USED IN THE INSTALLATION OF THIS PRODUCT SHOULD BE TIGHTENED TO THE TORQUE(S) SPECIFIED IN THESE INSTRUCTIONS.
4. THESE INSTRUCTIONS SHOULD BE KEPT WITH THE VEHICLE.

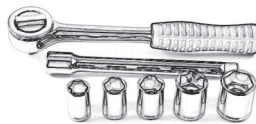
THE BASIC TOOLS NEEDED FOR MOST INSTALLATIONS



DRILL



DRILL BIT WITH STOP



RATCHET, SOCKETS AND/OR WRENCHES



SCREWDRIVERS



MEASURING TAPE

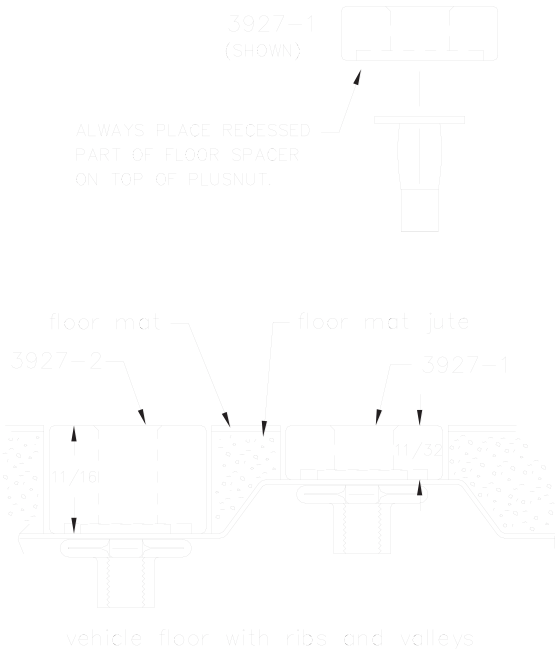
ADDITIONAL TOOLS MAY BE NEEDED FOR THIS INSTALLATION AND THEY WILL BE IDENTIFIED IN THE STEPS THAT FOLLOW.

If your vehicle contains carpet or a rubber floor mat you will need to prepare the mounting location. Position the product to be installed into the vehicle and once you are satisfied with the mounting locations, mark the mounting locations. Using a 1-3/16" diameter carpet cutter (P/N: 31183-0). Select the appropriate floor spacers as shown in the illustration. Set those aside for use later into the installation process.

Using the correct drill bit size for the selected plusnut, drill the mounting holes in the vehicle sheet metal to prepare for installing the plusnuts.

If you are thru-bolting at any of the locations simply drill a hole that is 1/16" larger than the bolt size(s) for those locations.

Once you have drilled the holes into the vehicle, the raw metal edges should be sealed using a self-etching primer to resist corrosion and potential fastener point failure.



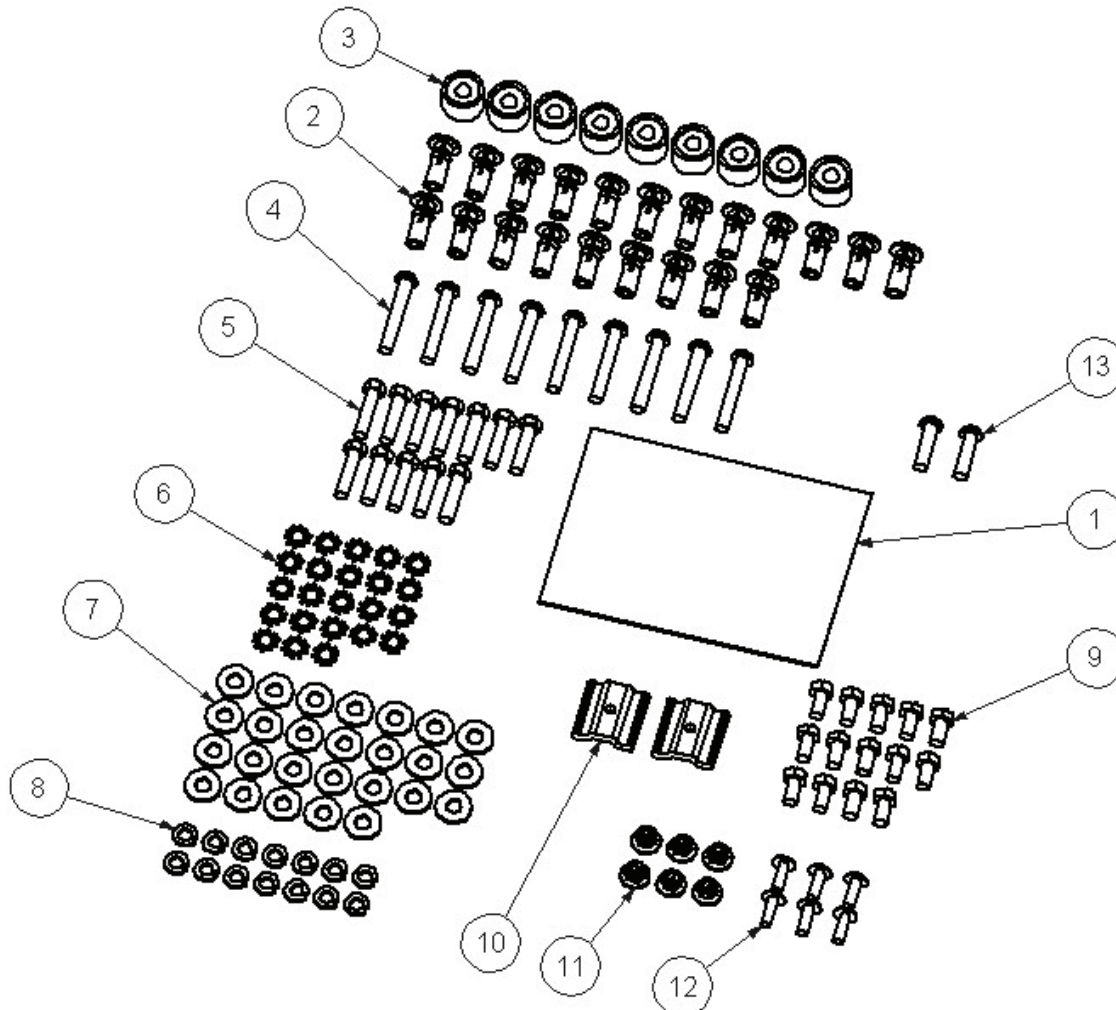
A PLUSNUT (RIVNUT) SETTING TOOL IS REQUIRED FOR PLUSNUT (RIVNUT) INSTALLATION AND IS NOT SUPPLIED WITH THIS KIT. OR USE AN AIR POWERED PLUSNUT SETTING GUN.

<p><u>1/4-20UNC Plusnut (FAS0052) Use 3/8" dia. drill w/stop</u> FAS0080 SCREW, HXHD, 1/4-20UNCx2.00", G8 FAS0067 WASHER, FLAT, 1/4"ID 22200-0 PLUSNUT TOOL</p>	
<p><u>5/16-18UNC Plusnut (FAS0091) Use 1/2" dia. drill w/stop</u> FAS0095 SCREW, HXHD, 5/16-18UNCx2.00", G8 FAS0086 WASHER, FLAT, 5/16"ID 22200-0 PLUSNUT TOOL</p>	

Place barrel of the plusnut body in sheet metal thru hole until flange is flush with sheet metal.
 Using a 9/16" combination wrench of plusnut tool body and a second hand wrench, ratchet, or air tool, rotate the hex bolt head CW to draw plus nut flanges up (set the plusnut).

Assembly and Installation Fastener Identification Sheet (BAG45340)

ITEM NO.	PART NUMBER	DESCRIPTION	QTY.
1	BAG0507-A	5" x 7" 3MIL AUTOBAG	1
2	FAS0091	Plusnut, 5/16	21
3	03927-2	Tall Floor Spacer	9
4	FAS0048	Screw, Button Hd Hex Soc, 5/16-18X 2, BLK OXIDE	9
5	FAS0093	Screw, Hex Hd, 5/16-18x1.25	12 </td
6	FAS0085	Washer, Lock, Ext. Tooth, 5/16	23
7	FAS0086	WASHER,FLAT USS 5/16 ZP	26
8	FAS0098	Washer, Lock, Split, 5/16, Zinc Plate	14
9	FAS0165	Screw, Hex Hd, 5/16-18x.625	14
10	35335-0	SLIDE	2
11	FAS0055	Nut, Hex Flange,Nylock 1/4-20	6
12	FAS0062	Screw, Truss Hd. Ph, 1/4-20x0.75	6
13	FAS0741	Screw, Button Hd Hex Soc, M8-1.25 X 30	2



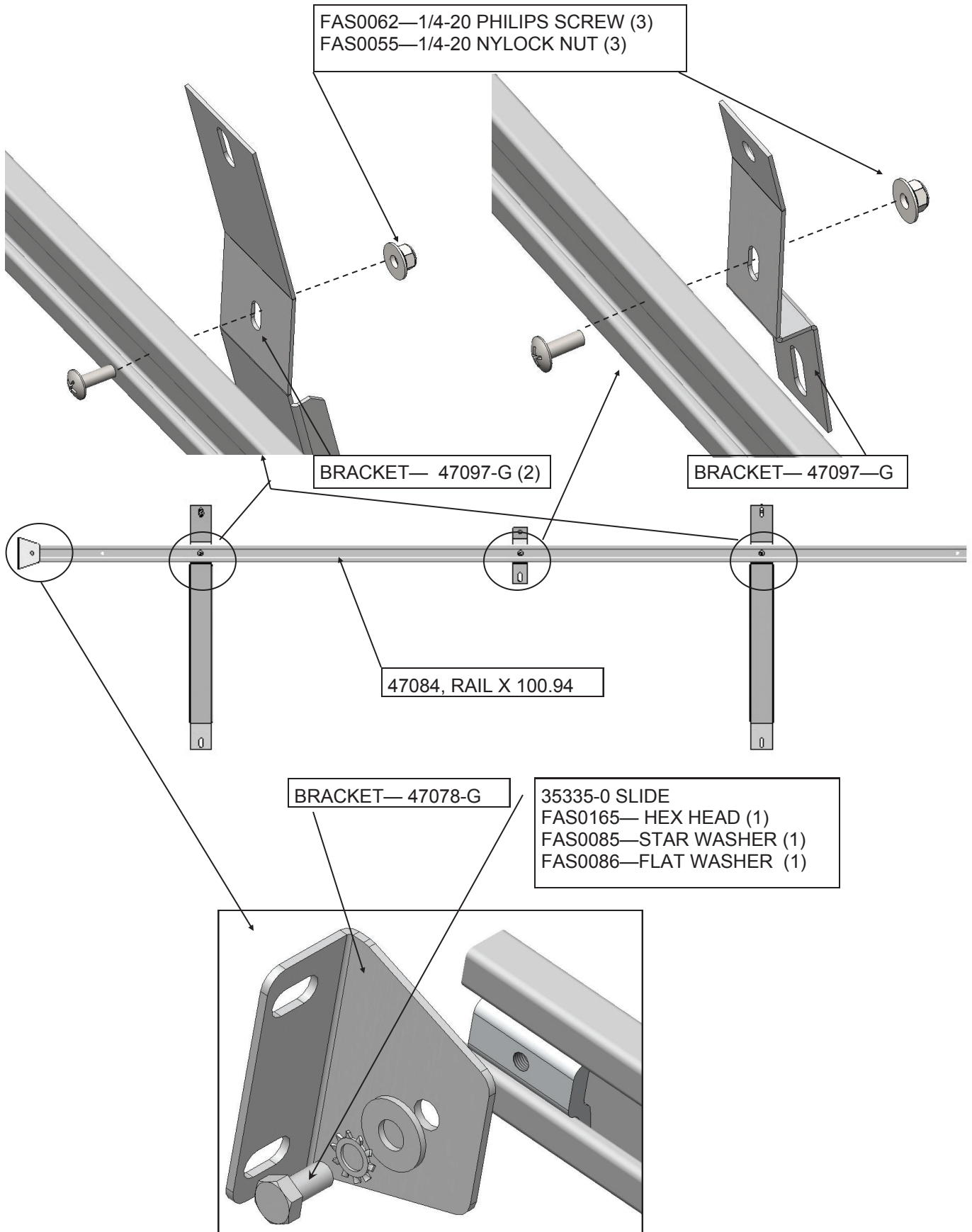
STEP 1A —VEHICLES WITH OEM LINER KITS—NEED TO REMOVE UPPER PANELS ON THE STREET AND CURB SIDE, SAVE FOR LATER.



GENERIC PICTURE OF VEHICLE AND LINER KIT.

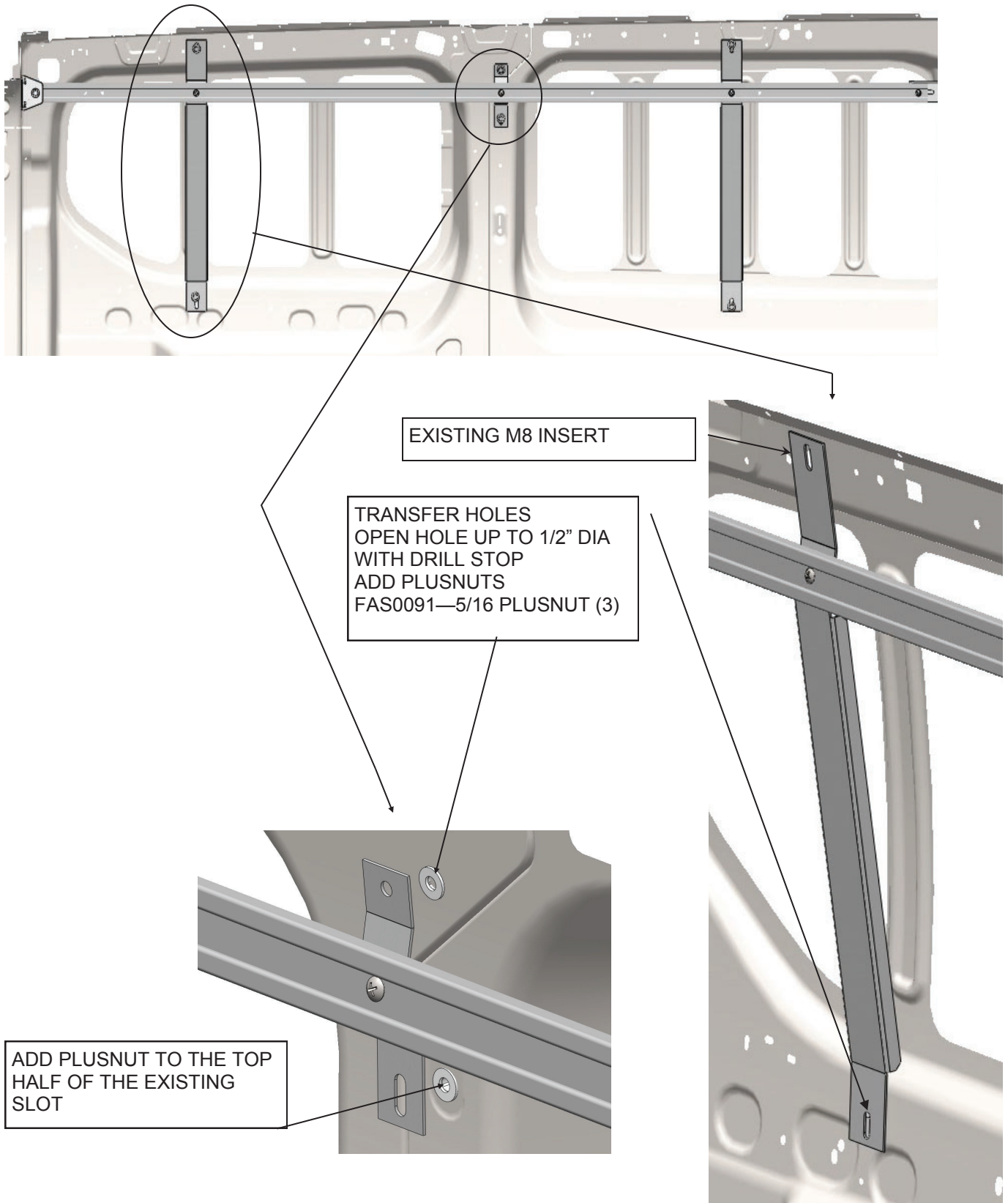
STEP 1B STREET SIDE UPPER RAIL, RAIL ASSEMBLY

- ASSEMBLE RAIL BEFORE PUTTING IN VEHICLE, **DO NOT FULLY TIGHTEN**

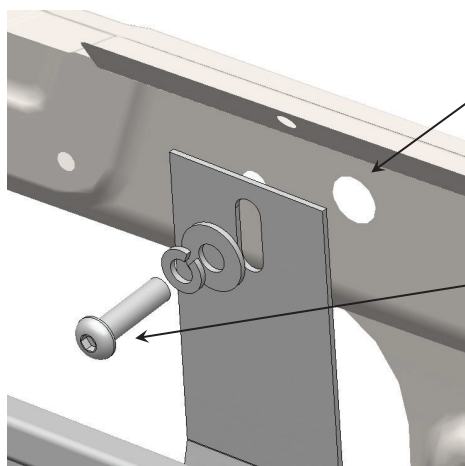
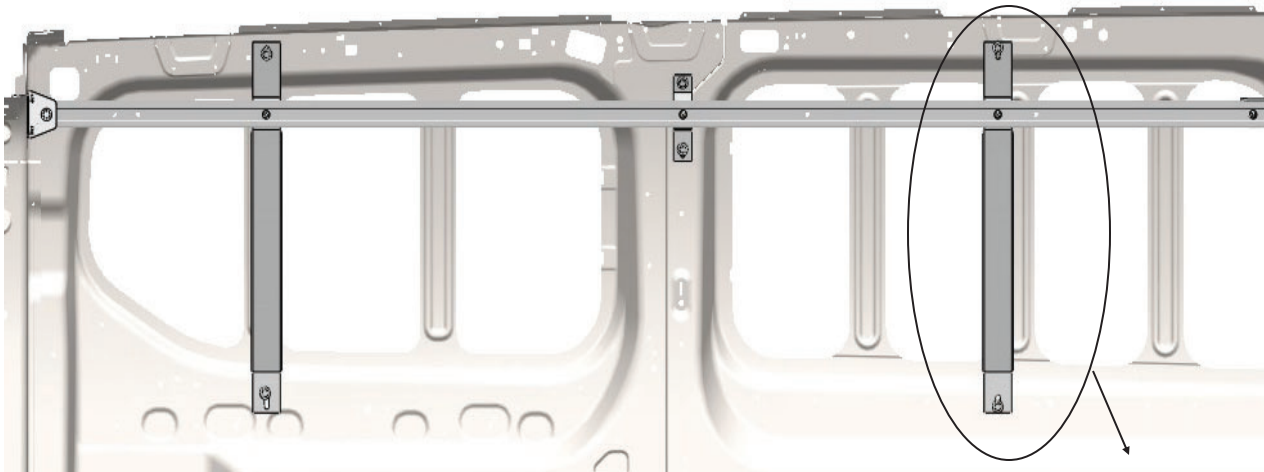


STEP 1C STREET SIDE UPPER RAIL

- INSERT RAIL ASSEMBLY INTO VEHICLE, TRANSFER HOLES TO ADD PLUSNUTS

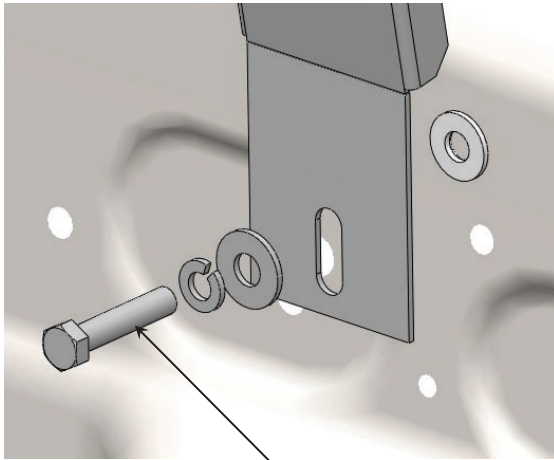
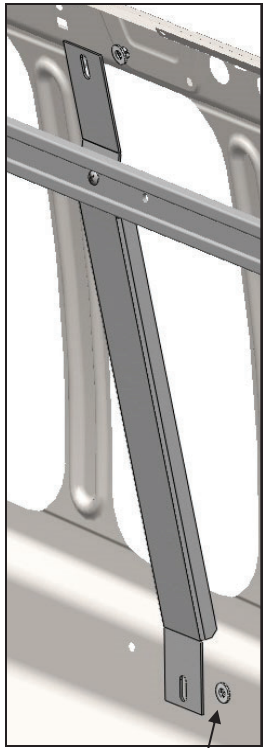


STEP 1D - INSTALLATION OF STREET SIDE UPPER RAIL



EXISTING M8 INSERT

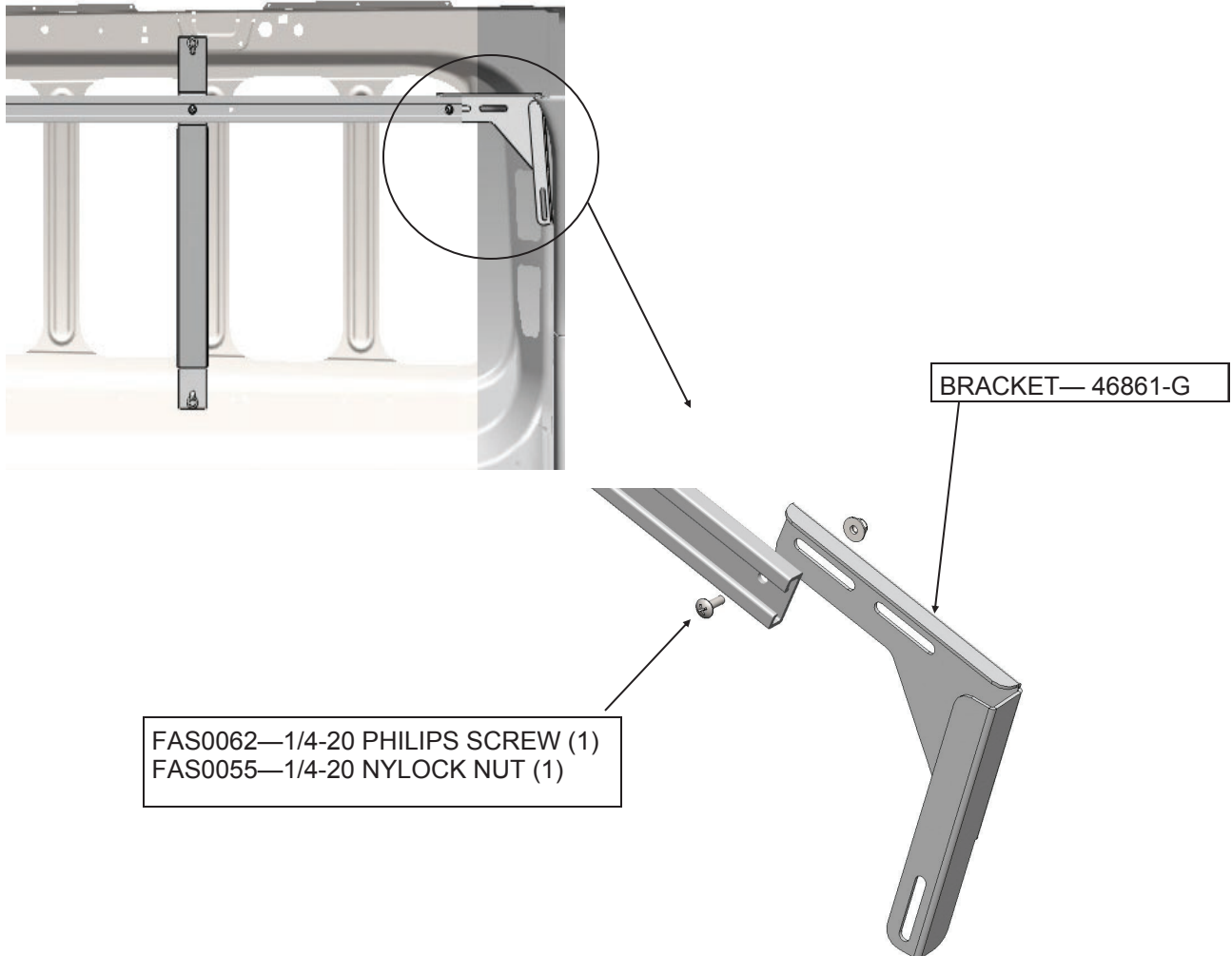
FAS0741— M8 1.25 BUTTON SCREW (1)
FAS0098—LOCK WASHER (1)
FAS0086—FLAT WASHER (1)



FAS0093— HEX HEAD (5)
FAS0098—LOCK WASHER (5)
FAS0086—FLAT WASHER (5)

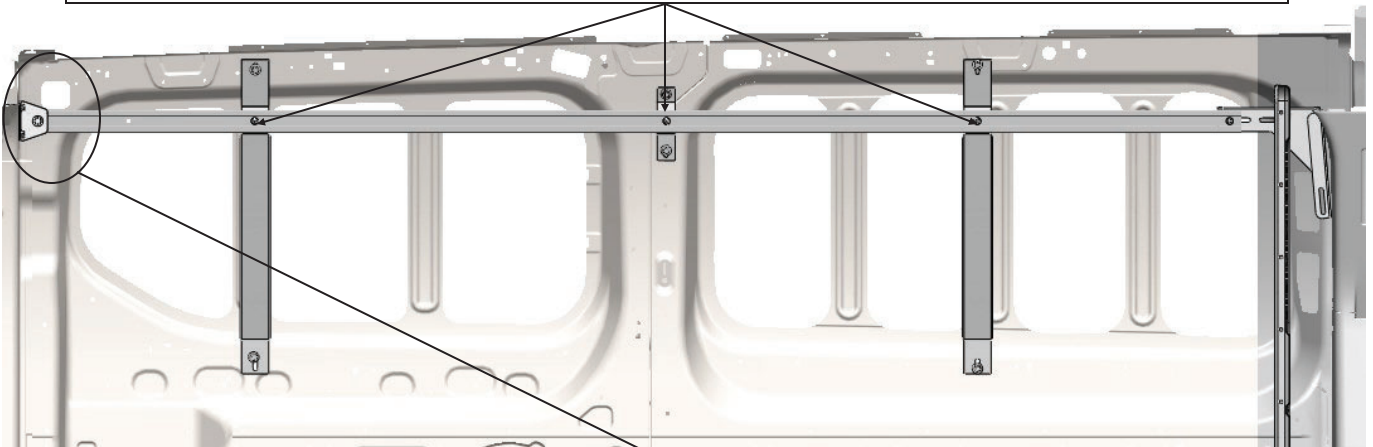
TRANSFER HOLES
OPEN HOLE UP TO 1/2" DIA
WITH DRILL STOP
ADD PLUSNUTS
FAS0091—5/16 PLUSNUT (2)

STEP 1E- STREET SIDE UPPER RAIL

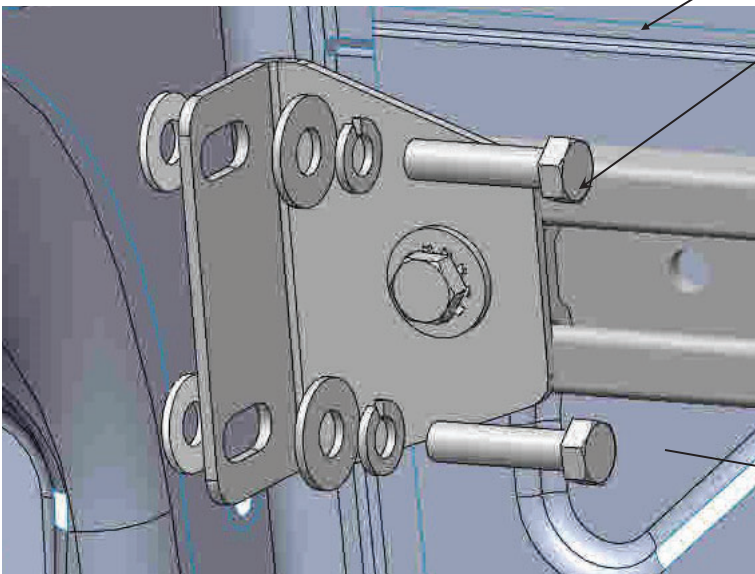
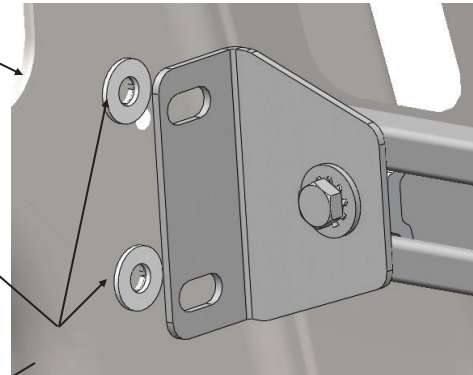


STEP 1F - FINAL INSTALLATION OF STREET SIDE UPPER RAIL

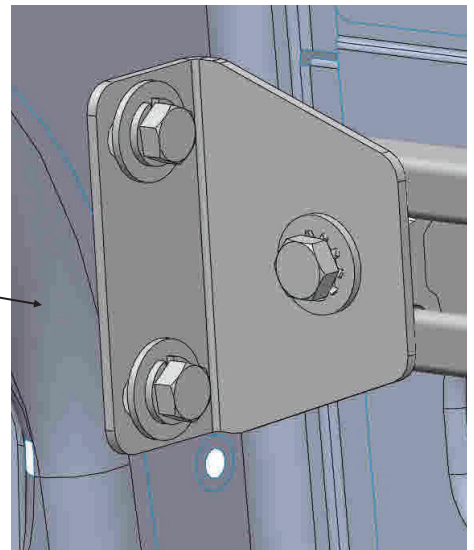
MAKE SURE THE RAIL IS STRAIGHT AND TIGHTEN TO AN APPROXIMATE HEIGHT OF 47.25" FROM THE FLOOR TO THE BOTTOM OF THE RAIL.



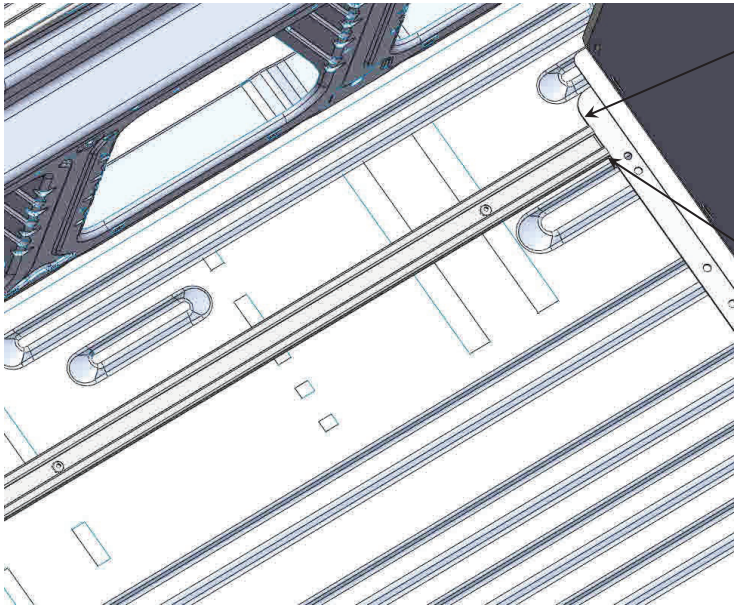
TRANSFER HOLES
OPEN HOLE UP TO 1/2" DIA
WITH DRILL STOP
ADD PLUSNUTS
FAS0091—5/16 PLUSNUT (2)



FAS0093— HEX HEAD (2)
FAS0098—LOCK WASHER (2)
FAS0086—FLAT WASHER (2)



STEP 2 - ADD STREET SIDE FLOOR RAIL WITH ADRIAN PARTITION

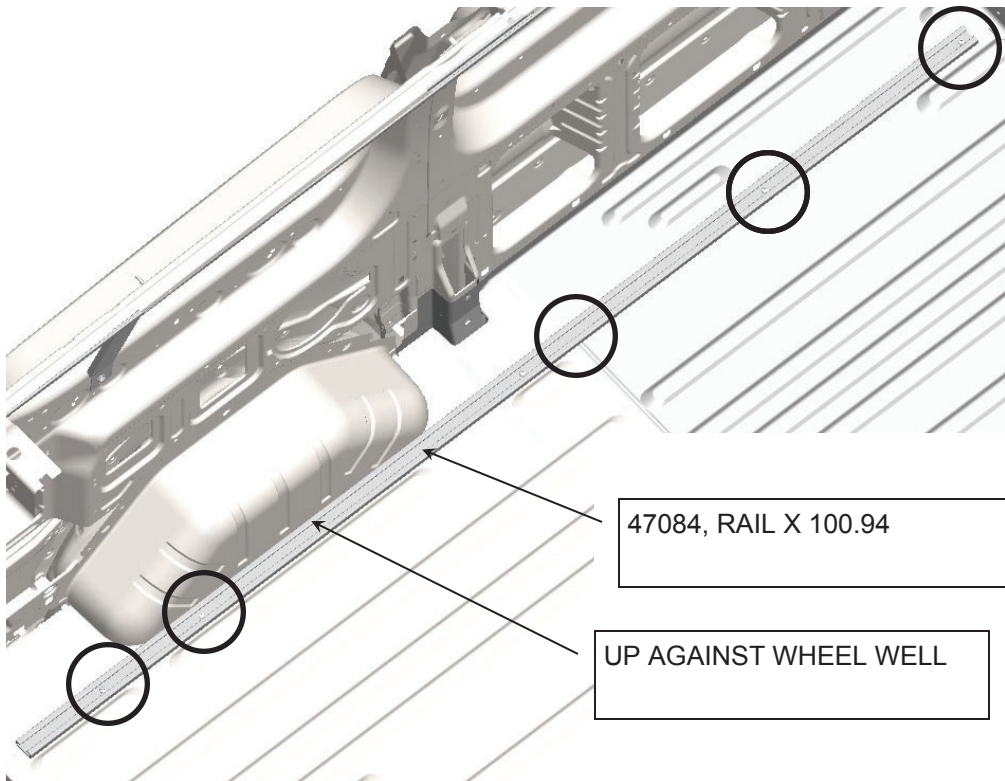
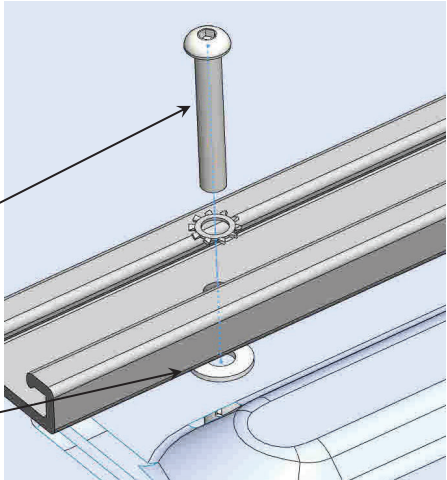


**INSTALLED
ADRIAN PARTITION
FOOTER RAIL.**

TOUCHING TO
APPROXIMATELY 1/8" AWAY
FROM FOOTER RAIL

FAS0091—PLUSNUT (5)
FAS0048— BUTTON HD (5)
FAS0085—STAR WASHER (5)

WITH FLOORING USE
TALL SPACERS
03927-2 (5)

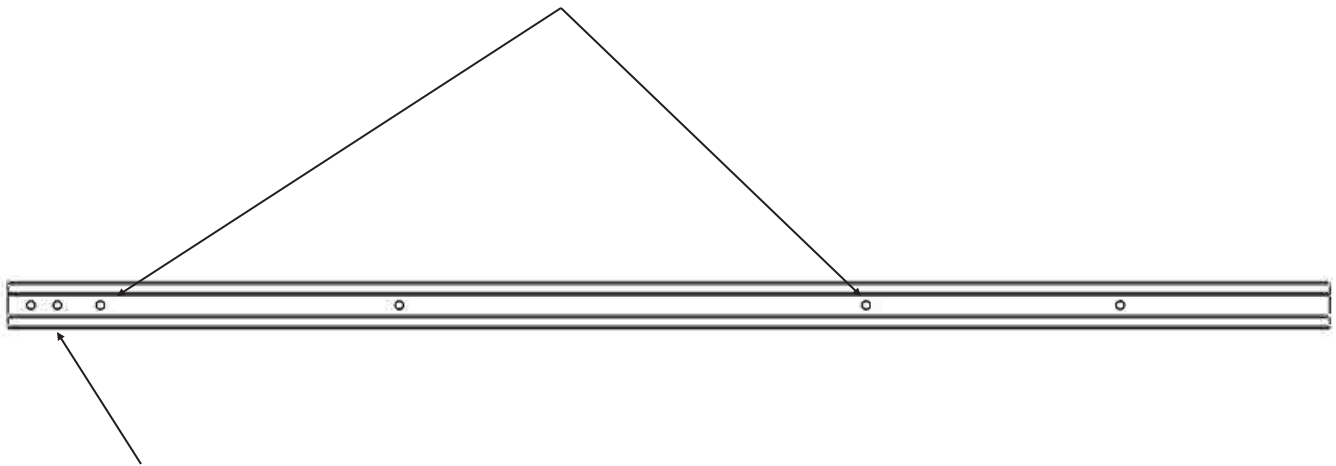


47084, RAIL X 100.94

UP AGAINST WHEEL WELL

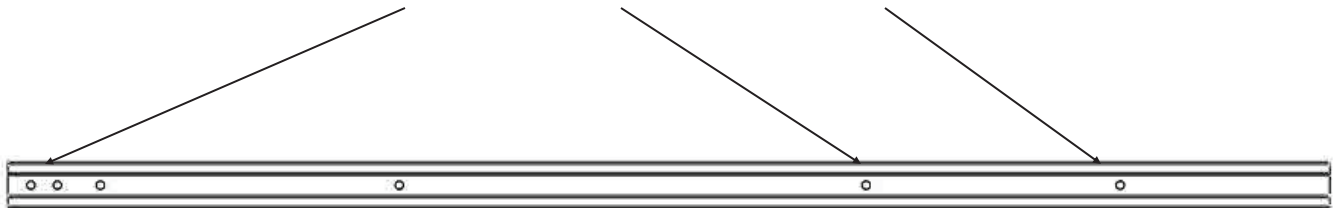
STEP 3A CURB SIDE UPPER RAIL/LOWER RAIL HOLE IDENTIFICATION PAGE

**UPPER RAIL HOLE LOCATIONS
(3RD AND 5TH)**



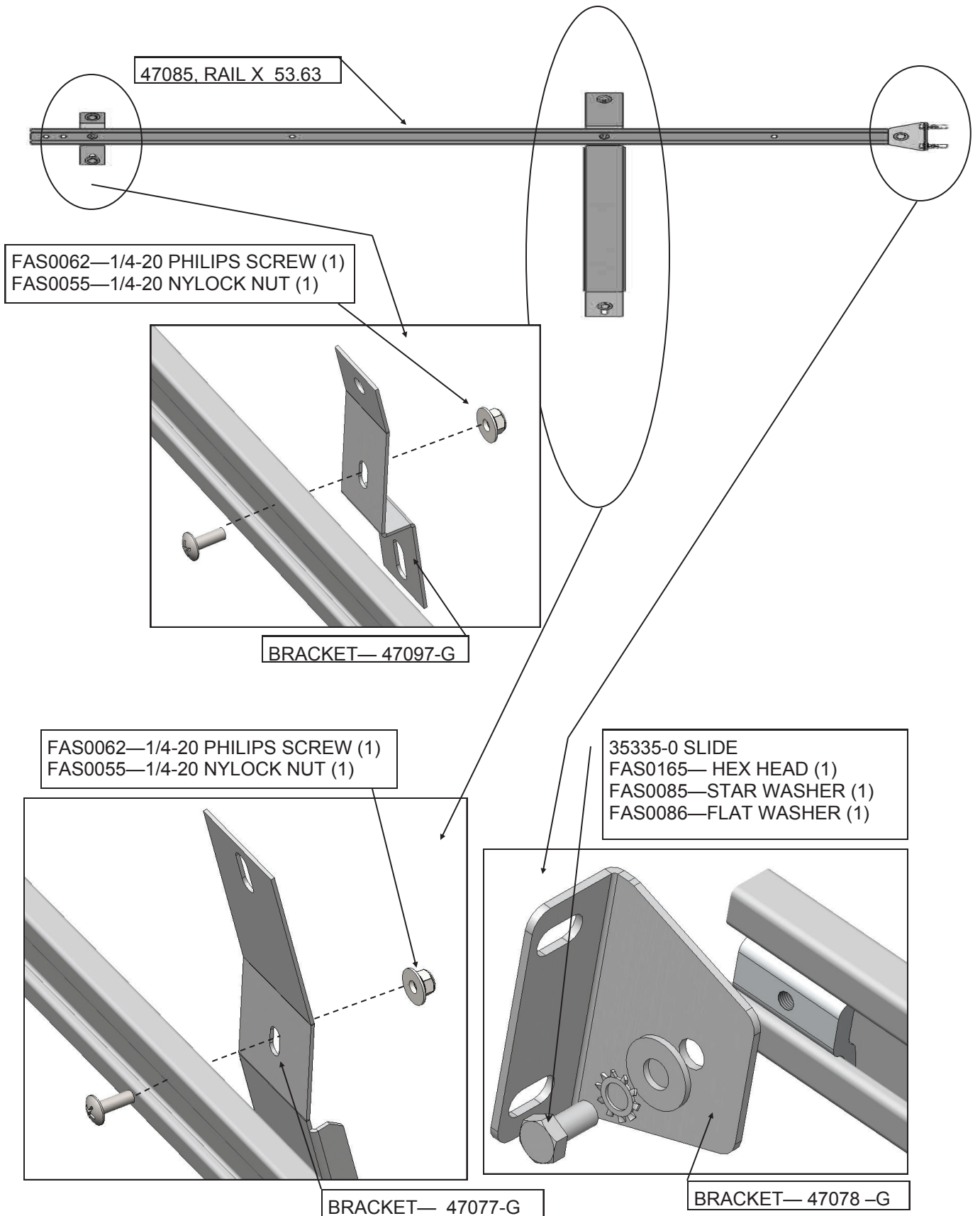
**IMPORTANT:
DO NOT USE FRONT TWO HOLES FOR UPPER RAIL
INSTALLATION**

**FLOOR RAIL HOLE LOCATIONS
(1ST, 5TH AND 6TH)**



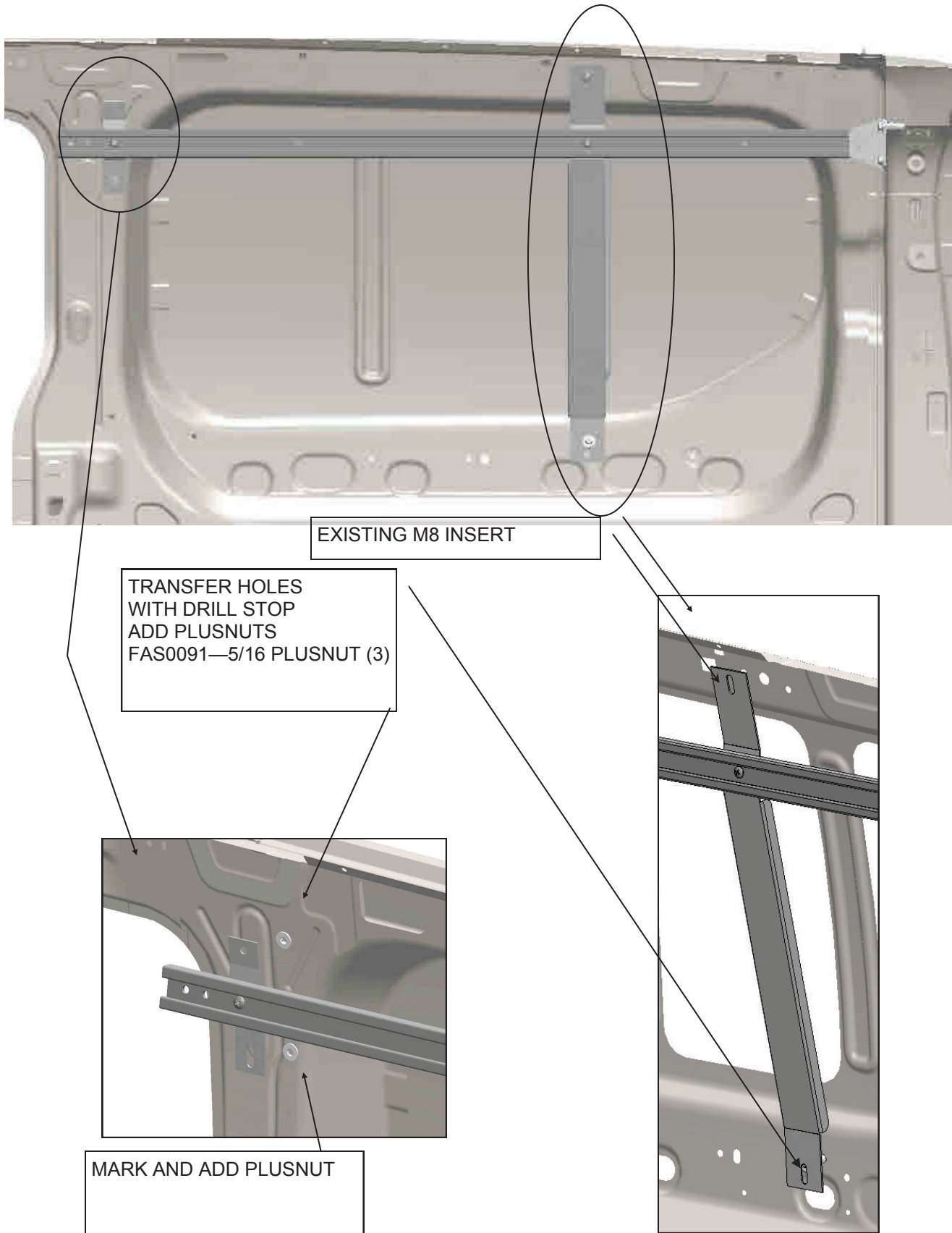
STEP 3A CURB SIDE UPPER RAIL, RAIL ASSEMBLY

- ASSEMBLE RAIL BEFOR PUTTING IN VEHICLE, **DO NOT FULLY TIGHTEN**

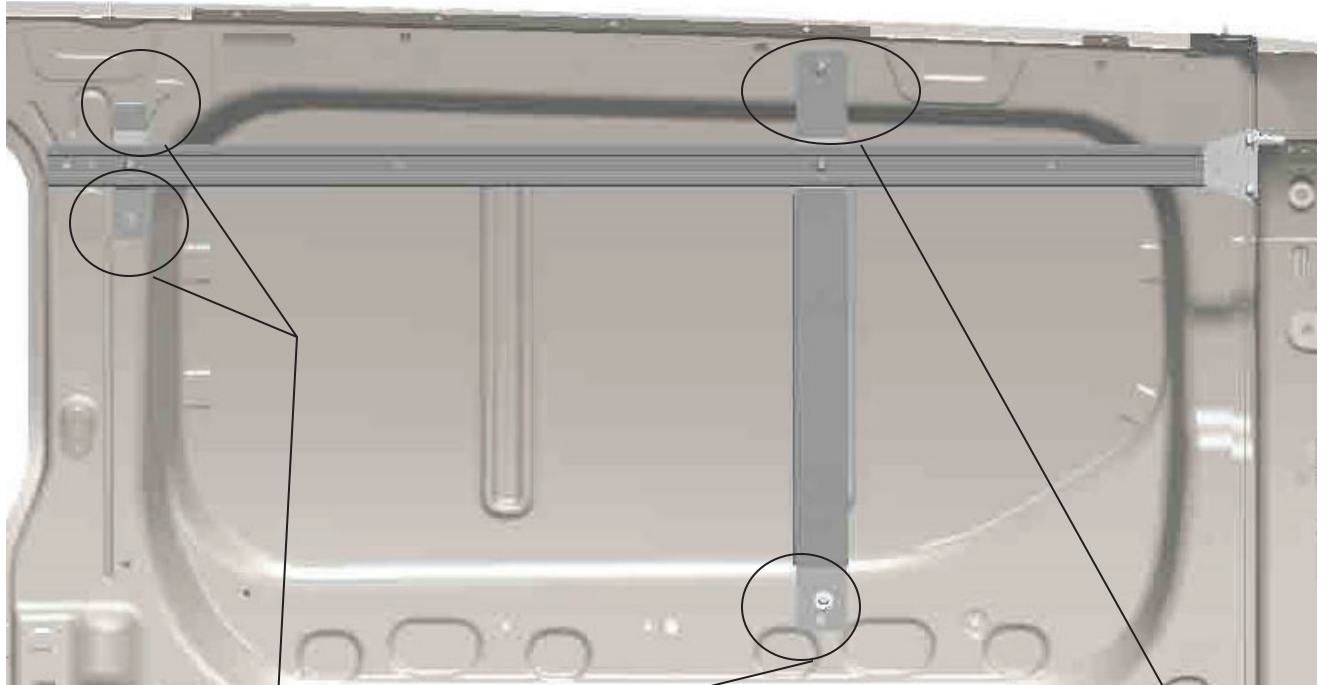


STEP 3B CURB SIDE UPPER RAIL

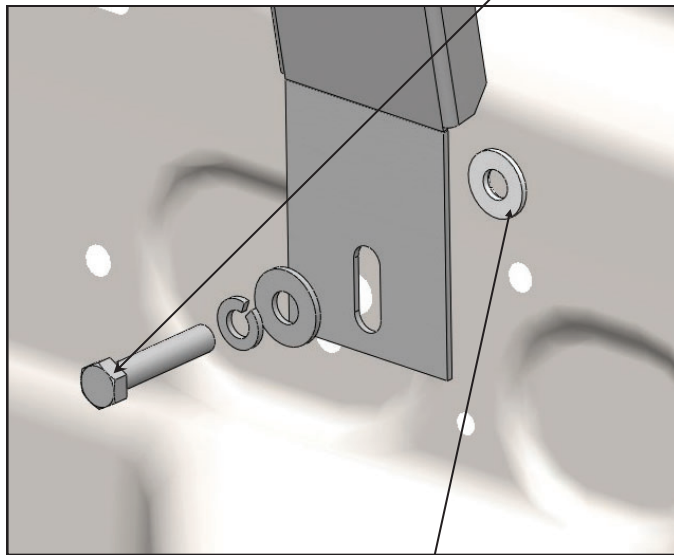
- INSERT RAIL ASSEMBLY INTO VEHICLE, TRANSFER HOLES TO ADD PLUSNUTS



STEP 3C - INSTALLATION OF CURB SIDE UPPER RAIL

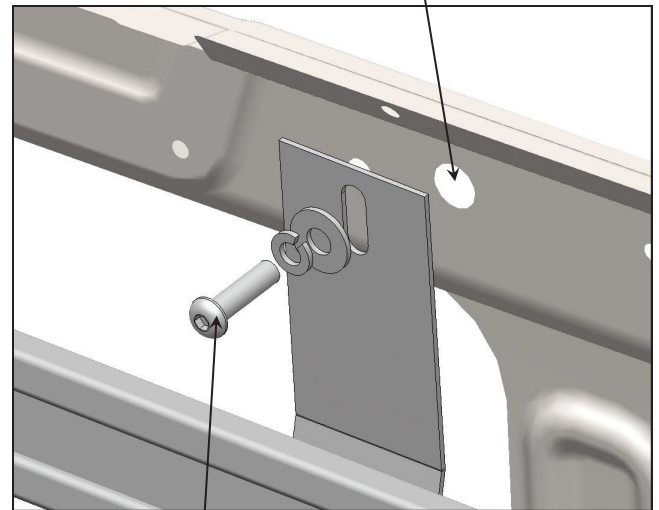


FAS0093— HEX HEAD (3)
FAS0098—LOCK WASHER (3)
FAS0086—FLAT WASHER (3)



FAS0091—5/16 PLUSNUT

EXISTING M8 INSERT

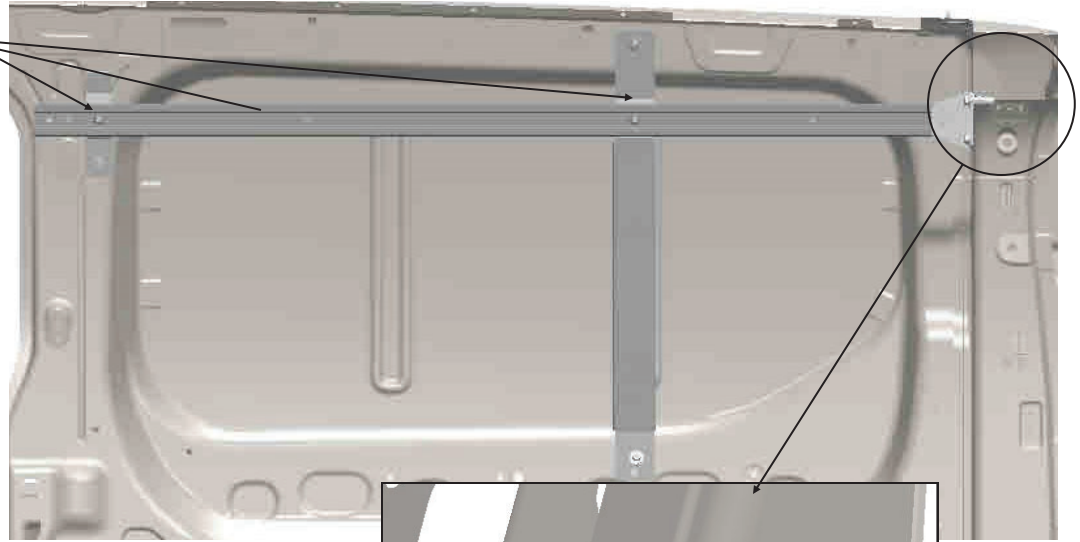


FAS0741— M8 1.25 BUTTON
SCREW (1)

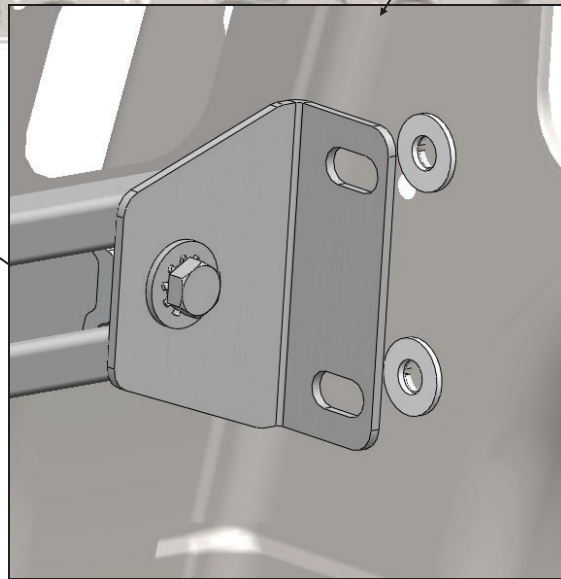
FAS0098—LOCK WASHER (1)
FAS0086—FLAT WASHER (1)

STEP 3D - FINAL INSTALLATION OF CURB SIDE UPPER RAIL

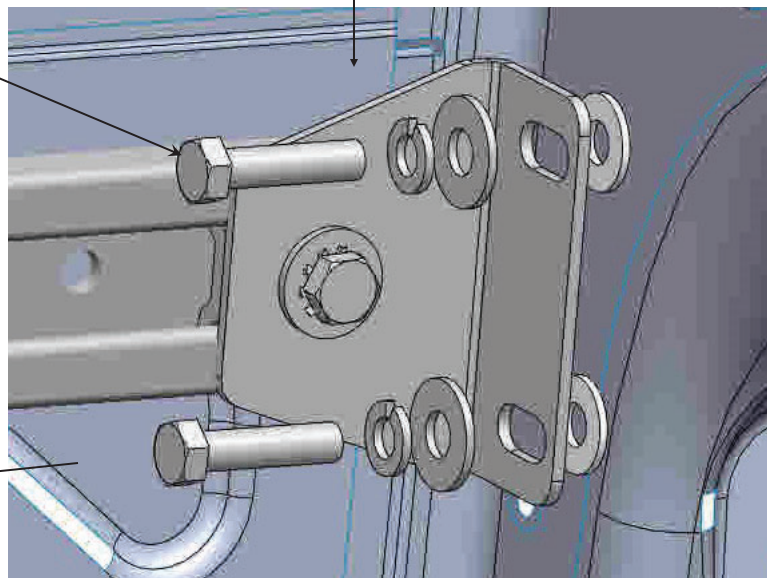
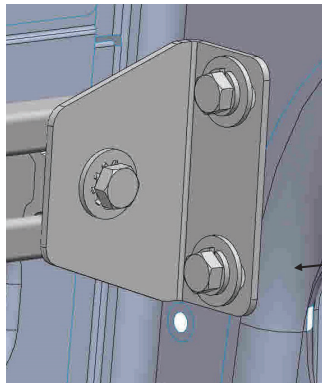
MAKE SURE THE RAIL IS STRAIGHT AND TIGHTEN TO AN APPROXIMATE HEIGHT OF 47.25" FROM THE FLOOR TO THE BOTTOM OF THE RAIL.



TRANSFER HOLES
OPEN HOLE UP TO 1/2" DIA
WITH DRILL STOP
ADD PLUSNUTS
FAS0091—5/16 PLUSNUT (2)



FAS0093— HEX HEAD (2)
FAS0098—LOCK WASHER (2)
FAS0086—FLAT WASHER (2)



STEP 4 - ADD CURB SIDE FLOOR RAIL

WITH FLOORING USE
TALL SPACERS
03927-2 (3)

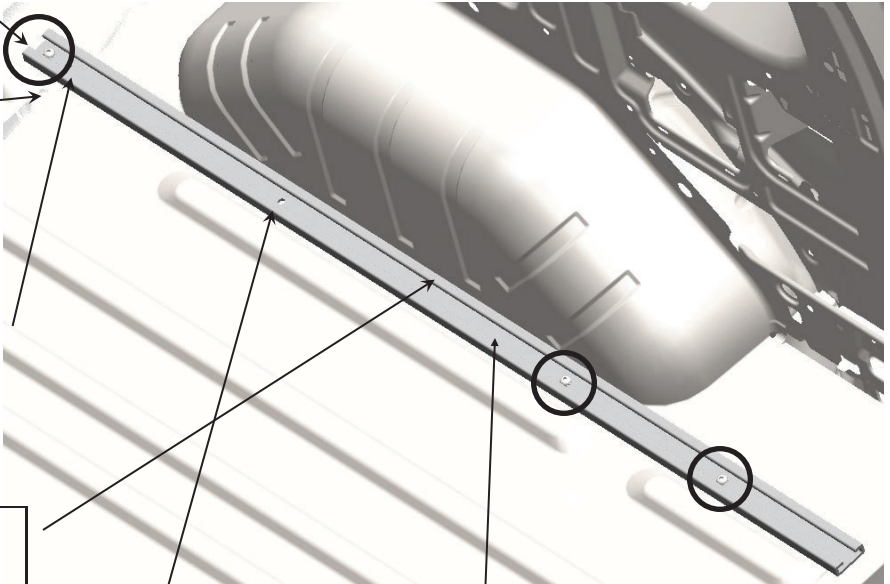
TRANSFER HOLE LOCATIONS
(3) PLACES, 1ST, 5TH, 6TH
HOLE
REMOVE RAIL
DRILL AND SET PLUSNUTS
FAS0091—5/16 PLUSNUT (3)

**DO NOT USE THESE
TWO HOLES HOLE
(2ND & 3RD)**

UP AGAINST WHEEL WELL

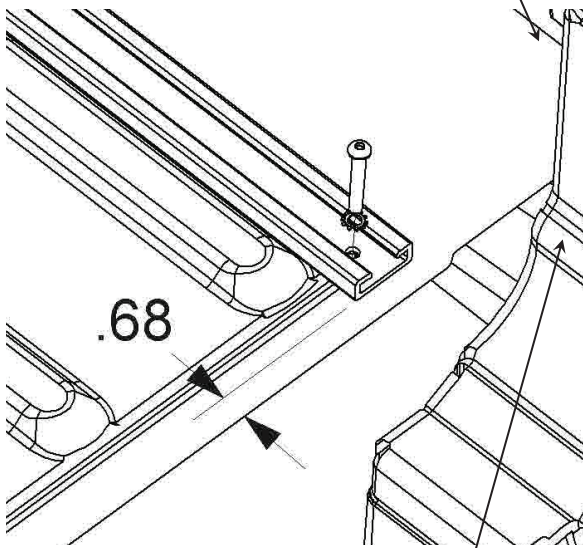
DO NOT USE THIS HOLE

47085, RAIL X 53.63

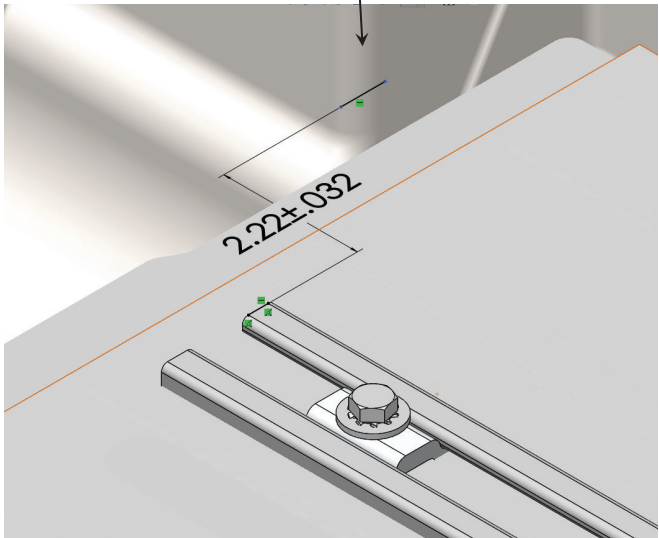


FAS0091—PLUSNUT (3)
FAS0048— BUTTON HD (3)
FAS0085—STAR WASHER (3)

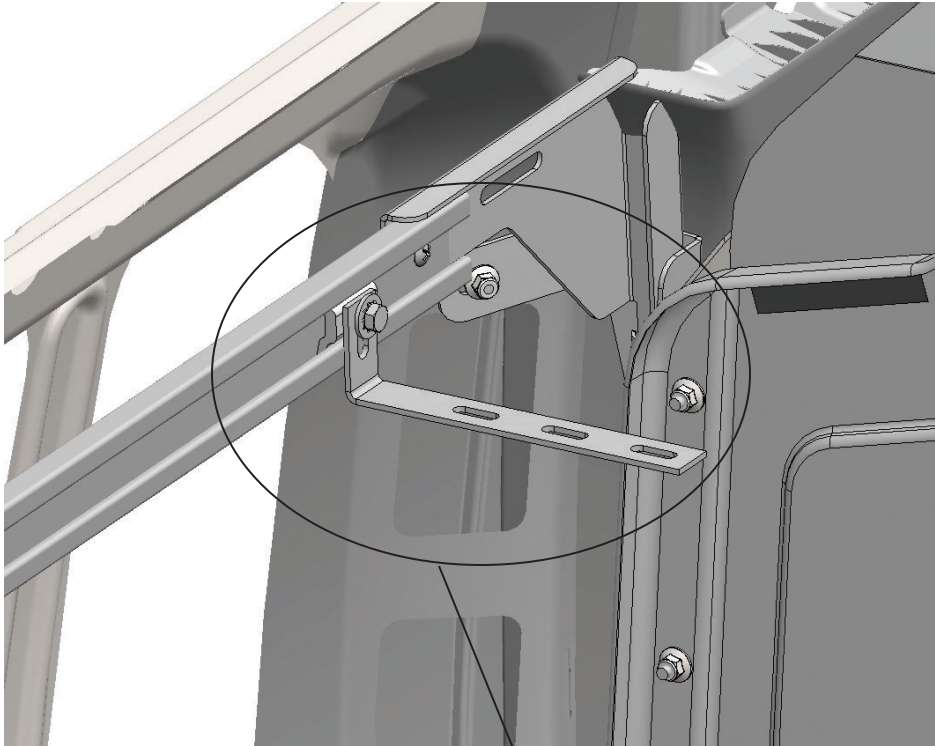
Dimension from D-Pillar to the
end of the Rail



APPROX 11/16" FROM SEAM
LINE UP WITH TOP RAIL

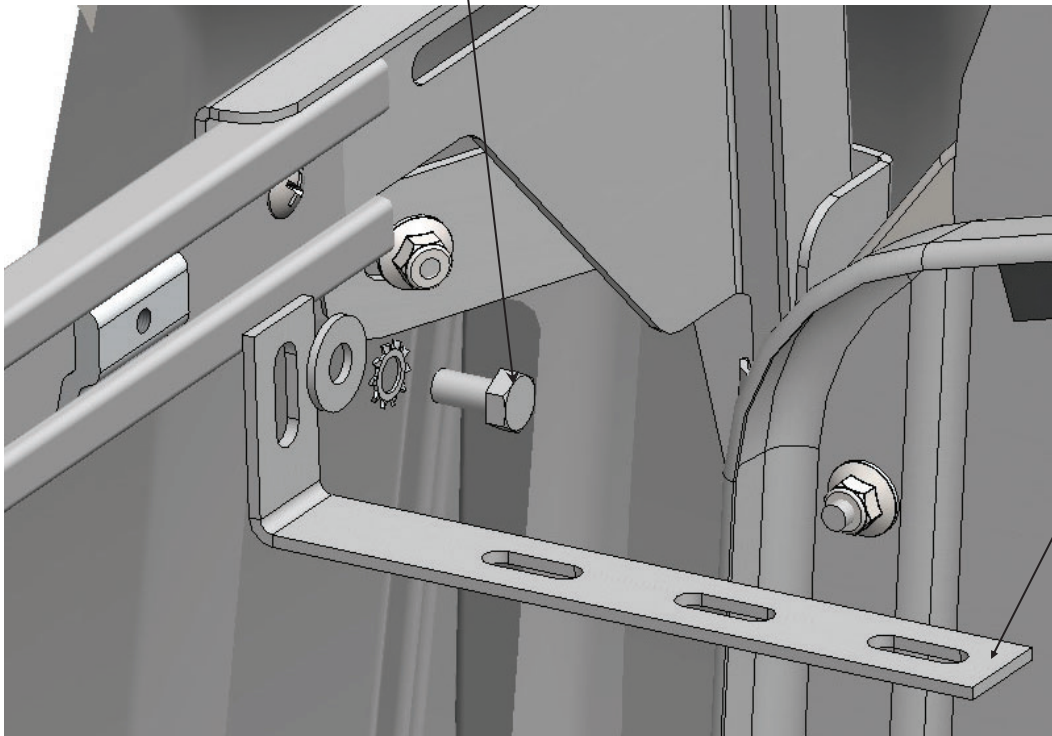


STEP 5 - ADD SHELFING BRACKETS - 4 ON STREET SIDE UPPER AND 2 ON CURB SIDE UPPER

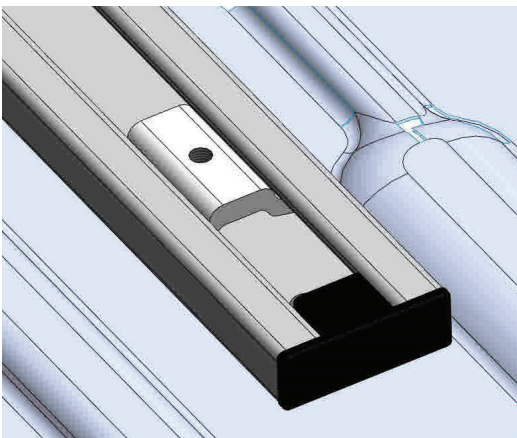
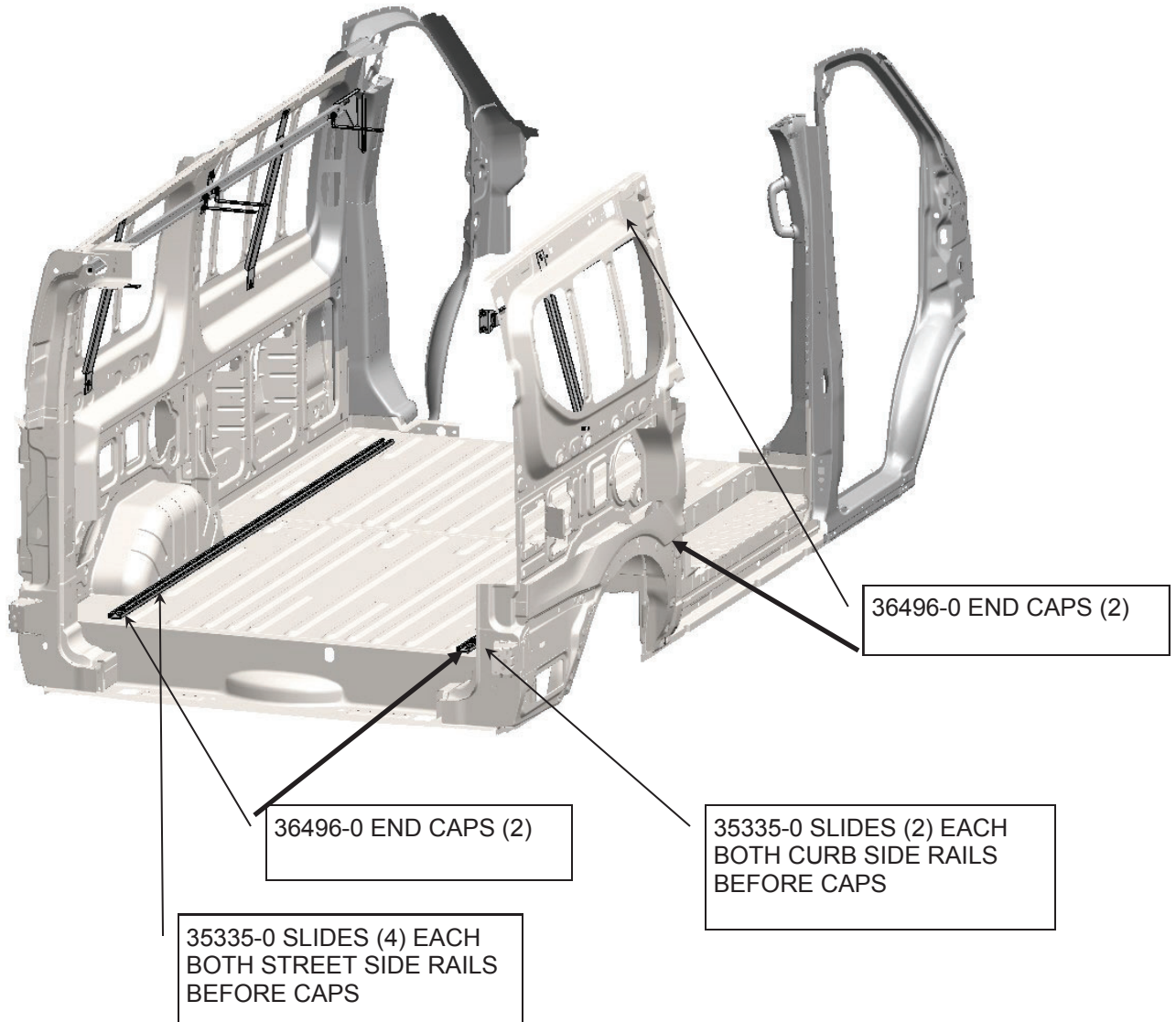


35335-0 SLIDE (6)
FAS0165— HEX HEAD (6)
FAS0085—STAR WASHER (6)
FAS0086—FLAT WASHER (6)

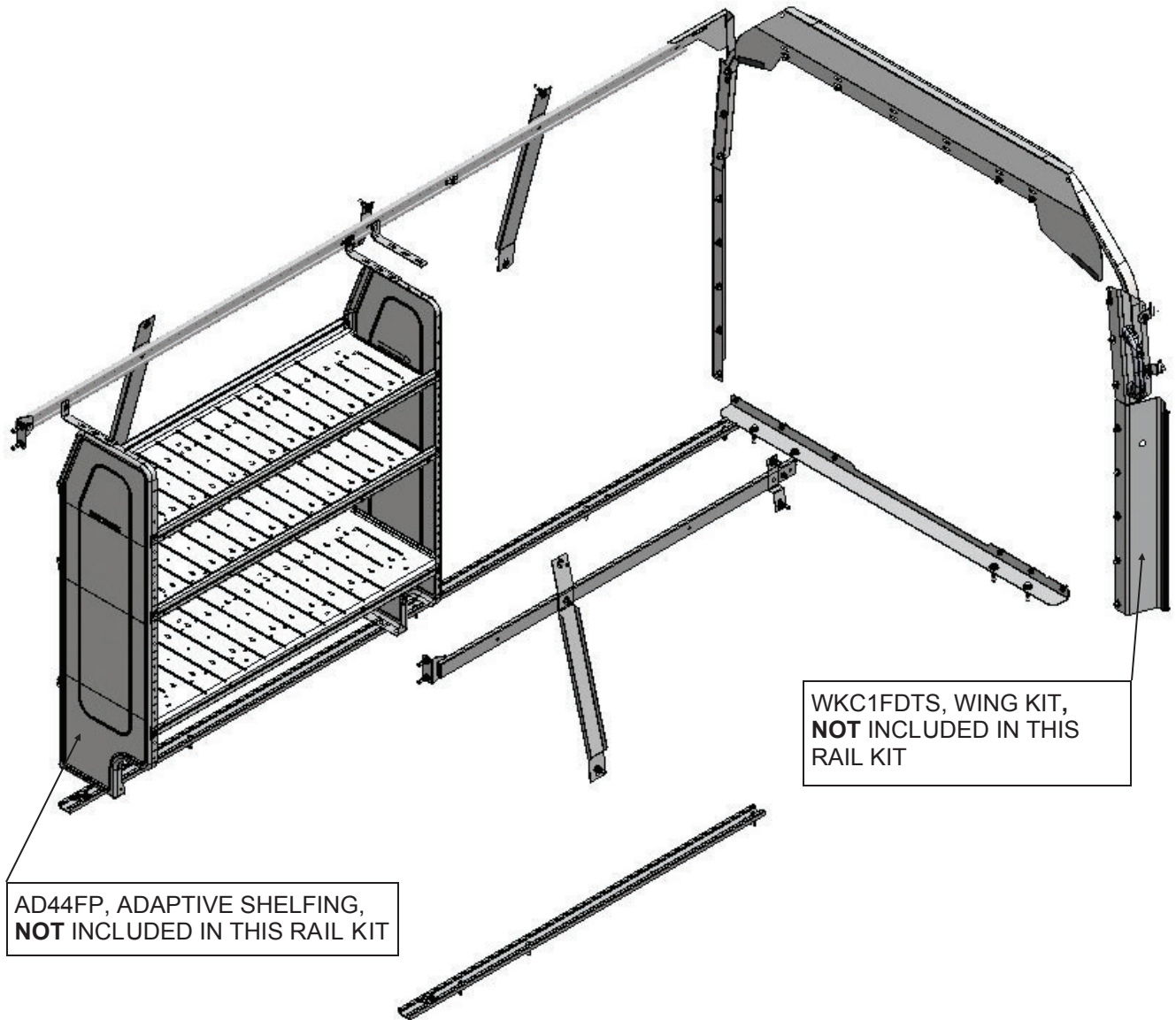
SHELFING BRACKET—
45339-G (6)
4 UPPER STREET SIDE
2 UPPER CURB SIDE



STEP 5 - ADD SLIDES AND END CAPS TO RAILS



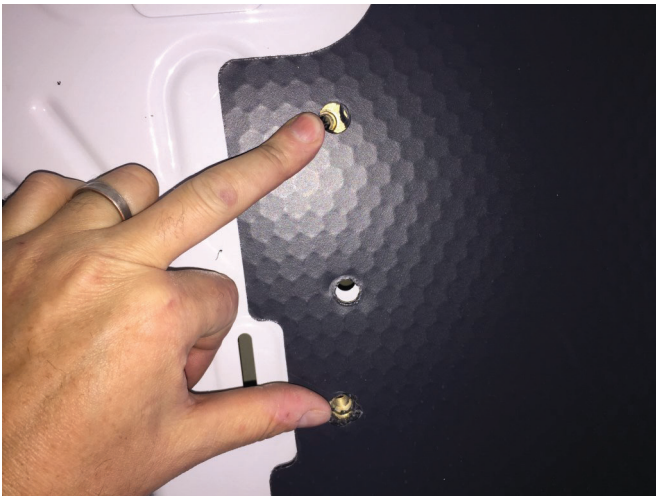
YOUR INSTALLATION IS NOW COMPLETE
See Additional Pages to Re-Install the Liner



**DOUBLE CHECK ALL FASTENERS LOCATIONS TO BE SURE THAT ALL
FASTENERS ARE TIGHTENED TO SPECIFICATIONS.
YOUR INSTALLATION IS NOW COMPLETE!
STOW THIS COPY IN THE VEHICLE FOR FUTURE REFERENCES!**

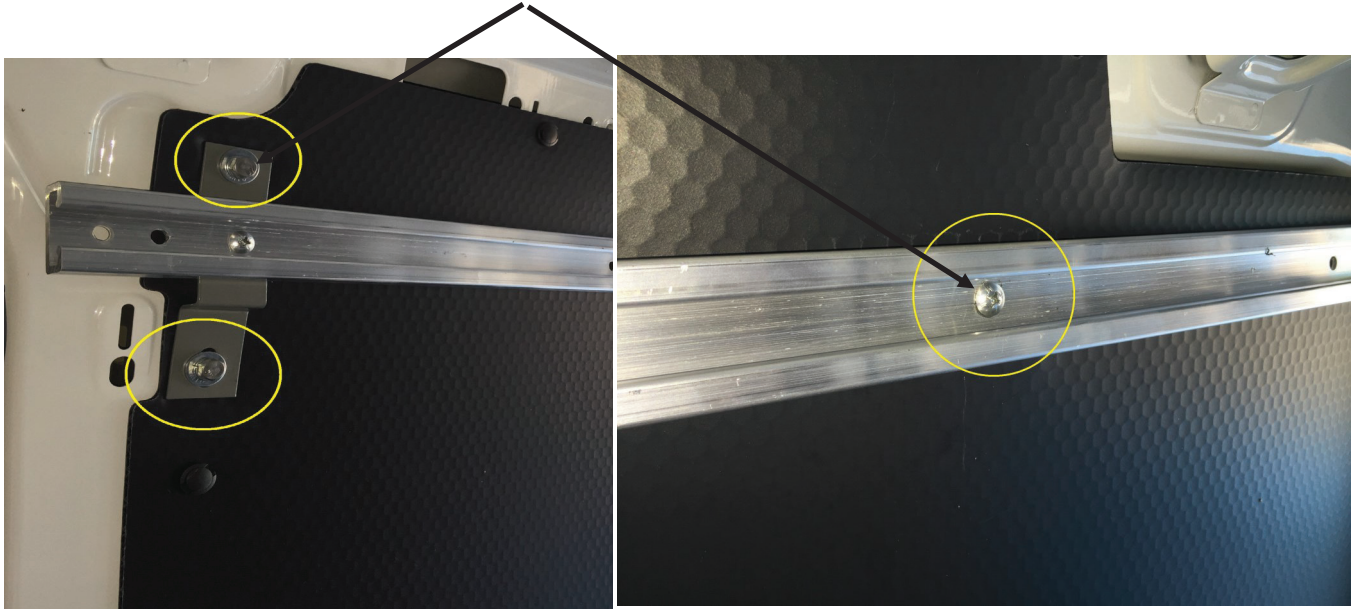
STEP 6 - Re-Install OEM Upper Liner from Step 1A

Remove Rail Kit, Install Aux. Body Post and set 1/4-20 Plusnut in Body Post where Rail was Mounted. Re-Install OEM liner, add clearance holes over the Plusnuts From previous steps.



STEP 7 - Re-Install Rail Kit over Liner

Place rail kit over liner and re-install with proper fasteners as shown here.



STEP 8 - Re-Install Street Side Rail over Liner

Repeat Steps 6 & 7 for Street Side

