

<b>INSTR. NUMBER : 68558</b>  <b>PART NUMBER : CRMBK4W</b>  <b>PART •</b> <b>DESC. •</b> COMPCT,MNT BKT KT,RAIL,4W	PG:	REV:	ITEM NO.	PART NUMBER	DESCRIPTION	QTY.
	1	A	1	68202-W	PROFILE, MOUNTING ARM, W	4
			2	63852-W	UTILITY, MOUNTING BRKT, W	4
			3*	63915-W	UTILITY, CROSSBOW, 58", WHITE	2
			4*	63914	UTILITY, WEAR STRIP, 58"	2
			5*	63851	UTILITY RCK,END CAP,BLACK	4

**ITEMS NOTED (#\*) ARE  
PART OF: 2BARCW**

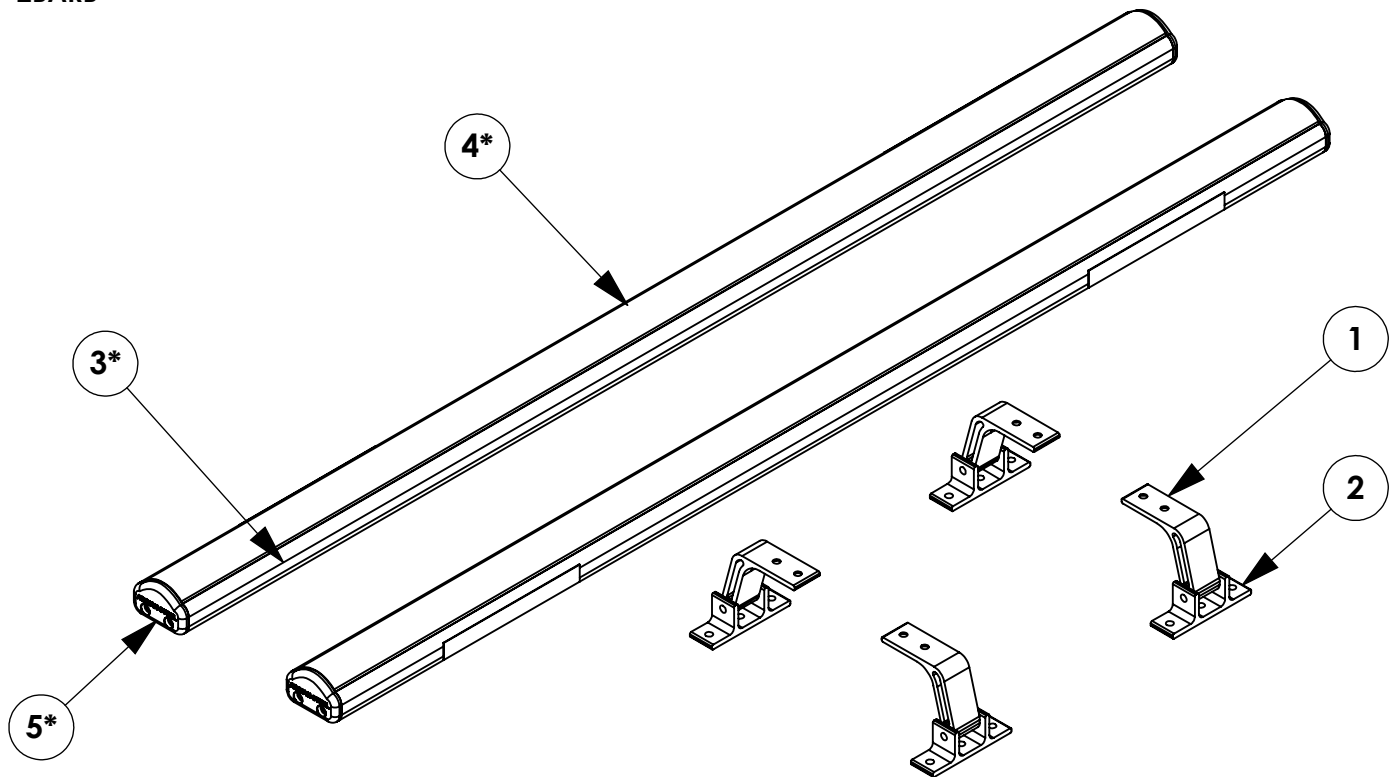
**NOTE: THIS INSTRUCTION IS VALID  
FOR THE FOLLOWING KITS:**

**MOUNTING KITS**

- URMBK4W (SHOWN)
- URMBK4B
- URMBK2W
- URMBK2B

**CROSSBOW KITS**

- 2BARCW (SHOWN)      -1BARCW
- 2BARCB                -1BARCB
- 2BARTOPW            -1BARTOPW
- 2BARTOPB            -1BARTOPB
- 2BARW                -1BARW
- 2BARB                -1BARB



**GET TO KNOW THE VEHICLE** - AT THE BEGINNING OF ANY INSTALLATION, CHECK THE LOCATION OF THE FUEL TANK, FUEL LINES, BRAKE LINES, HIGH VOLTAGE BATTERIES AND WIRING HARNESSSES TO AVOID INJURY OR PROPERTY DAMAGE FROM TOOL CONTACT.

**SEAL ALL EXTERIOR HOLES** - ALL INSTALLATION HOLES SHOULD BE SEALED WITH BUTYL TAPE OR SILICON TO PREVENT WATER AND EXHAUST GASES FROM ENTERING THE VEHICLE.

**CONTROL DRILL DEPTH** - TO AVOID DAMAGE TO THE VEHICLE, USE A DRILL STOP OR CLEARED STEP BIT WHEN DRILLING INSTALLATION HOLES.

**ALWAYS ADD PRIMER** - WHEN ADDING INSTALLATION HOLES BE SURE TO USE A SELF-ETCHING PRIMER TO PREVENT CORROSION, FASTENER FAILURE AND INJURY.

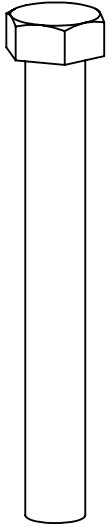
**MOUNTING POINTS MUST HAVE METAL-TO-METAL CONTACT** - USE PROVIDED MOUNTING SPACERS TO ACCOMMODATE FOR VEHICLE FEATURES, CARPET OR SUBFLOORS.

**PROVIDE CLEARANCE FOR SPACERS** - IF THE INSTALLATION VEHICLE CONTAINS A CARPET OR SUBFLOOR, USE A 1-3/16" DIAMETER CARPET CUTTER (P/N: 31183-0) AT ALL MOUNTING LOCATIONS TO OPEN UP ROOM FOR SPACERS.

**CHECK SPACER ORIENTATION** - BE SURE THAT THE INDENT IN THE SPACER COVERS THE PLUSNUT HEAD; THIS ENSURES THE MOST METAL-TO-METAL CONTACT AND REDUCES VIBRATION.

**PLUSNUT INSTALLATION** - A PLUSNUT GUN IS RECOMMENDED FOR PLUSNUT INSTALLATION FOR ITS PRODUCTION SPEED. HOWEVER, A PLUSNUT SETTING TOOL CAN ALSO BE USED (P/N: 22200-0).

**THRU-BOLT CLEARANCE** - WHEN USING A THRU-BOLT AT ANY MOUNTING LOCATION, BE SURE THAT YOUR HOLE HAS 1/16" CLEARANCE.

**FASTENERS USED**

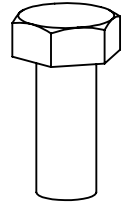
**FAS0243**  
**5/16-18 X 2.5 SS**  
**HH SCREW**  
**QTY: 4**



**FAS0552**  
**5/16 SS**  
**FLAT WASHER**  
**QTY: 12**



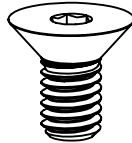
**FAS0588**  
**5/16 SS**  
**SPLIT WASHER**  
**QTY: 8**



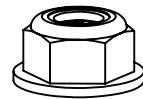
**FAS0799**  
**5/16-18 X .75 SS**  
**HH SCREW**  
**QTY: 8**



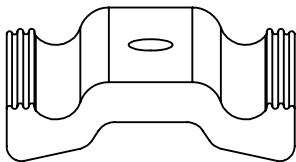
**FAS0857**  
**5/16 SS**  
**CS EXT LCK WASHER**  
**QTY: 8**



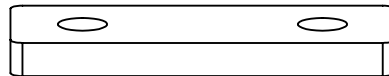
**FAS0858**  
**5/16-18 X .625 SS**  
**FHH CS SCREW**  
**QTY: 8**



**FAS0861**  
**5/16-18 SS**  
**NLK HFLNG NUT**  
**QTY: 4**



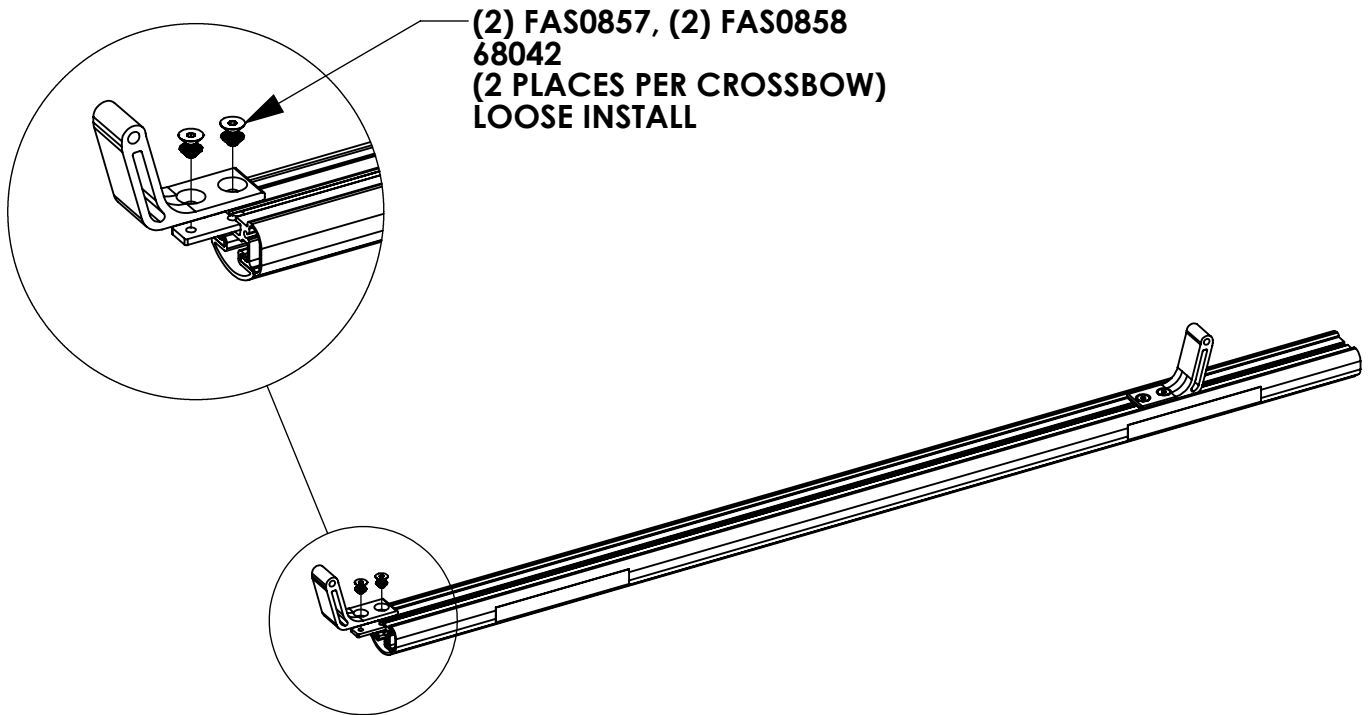
**35335-0**  
**1.5" AD RAIL**  
**QTY: 8**



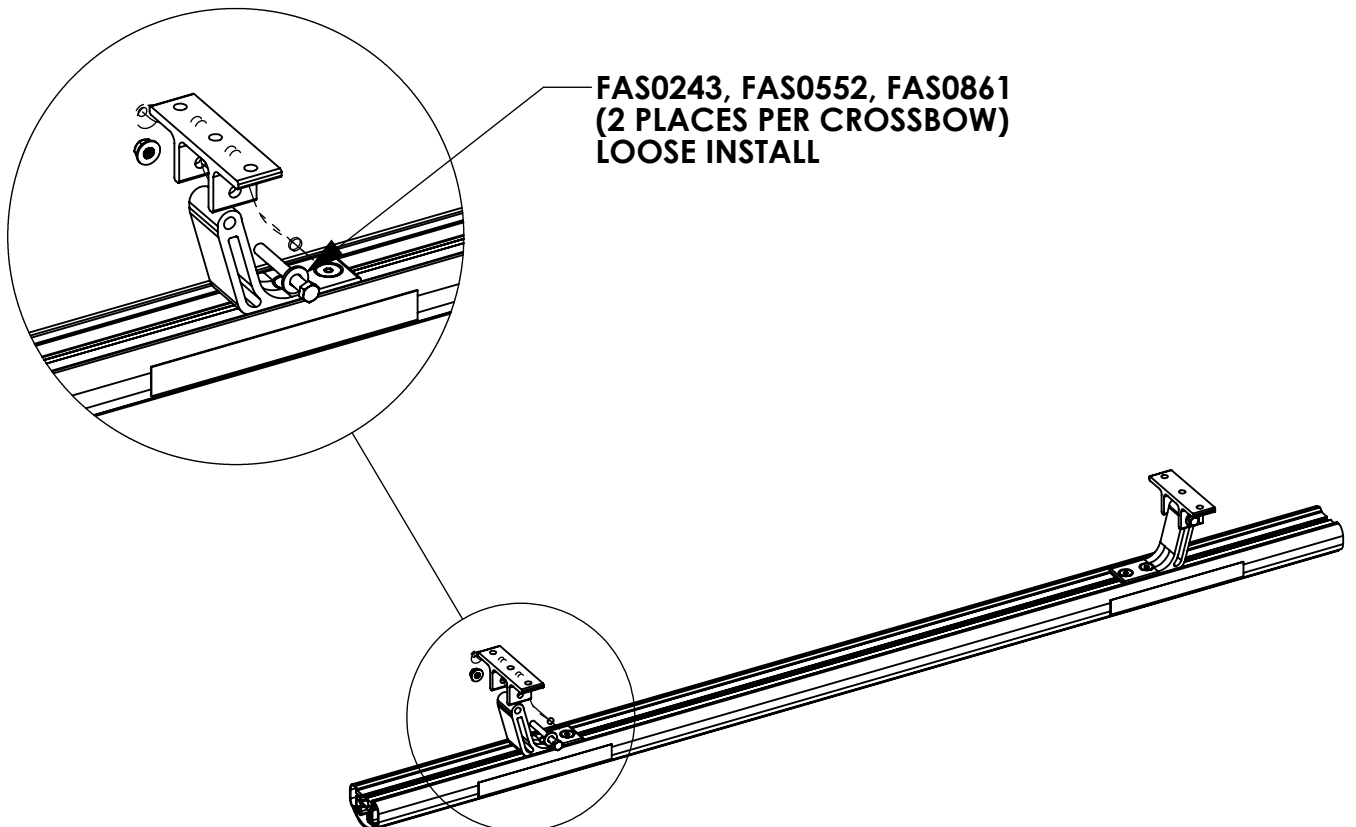
**68042**  
**PROFILE FOOT MTG PLATE**  
**QTY: 4**

**BEGIN ASSEMBLY**

**STEP 1 - ASSEMBLE MOUNTING ARMS TO CROSSBOW**

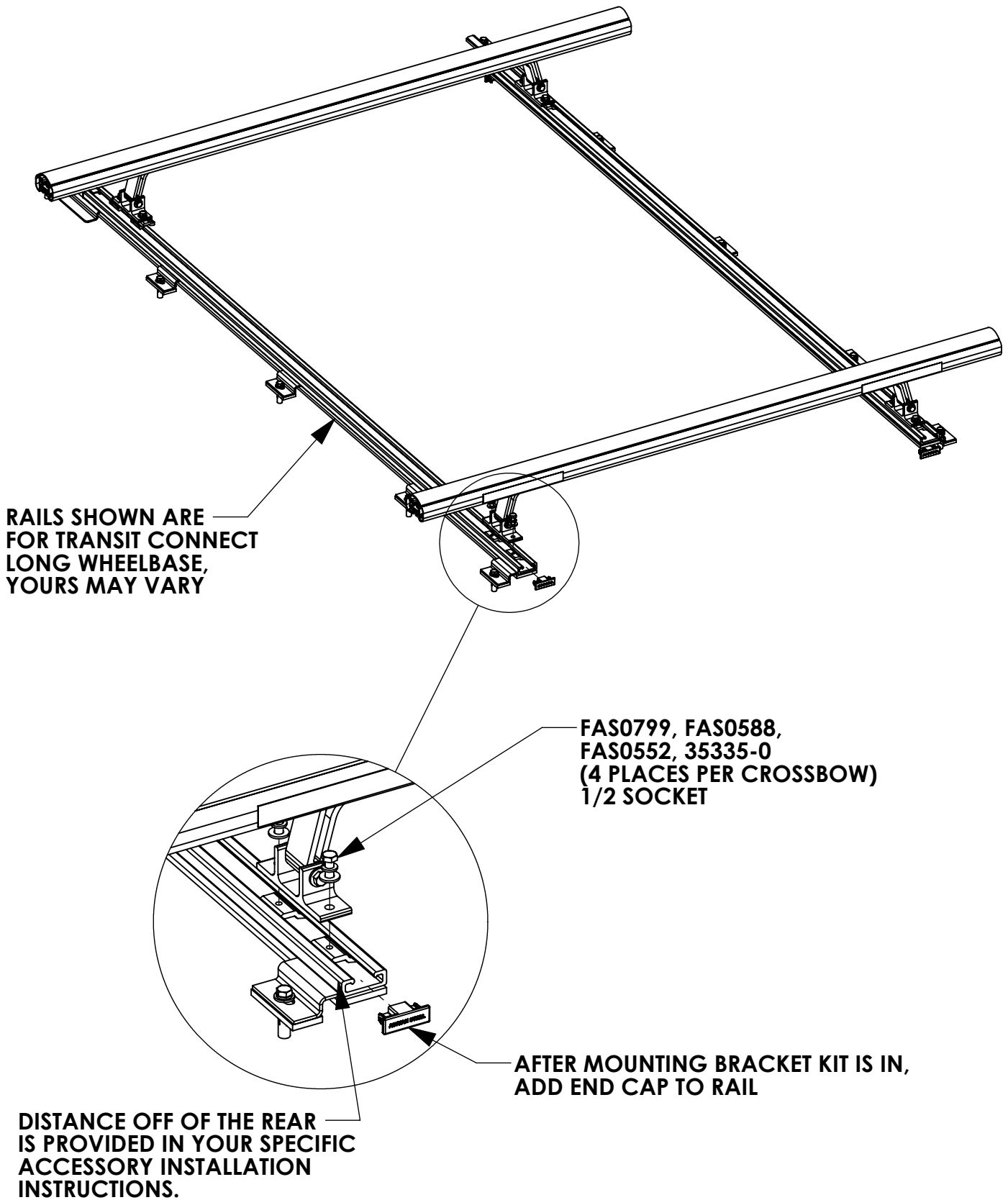


**STEP 2 - ASSEMBLE MOUNTING BRACKETS TO MOUNTING ARMS**

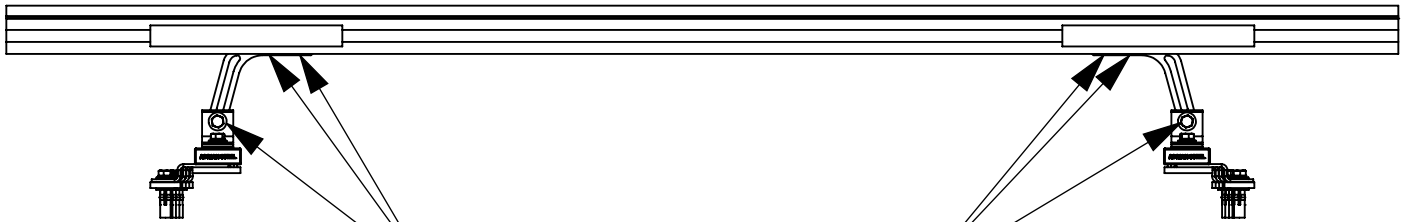


## BEGIN INSTALLATION

### STEP 3 - INSTALL MOUNTING BRACKET TO RAIL



***STEP 4 - CENTER CROSSBOW AND SECURE***



**CENTER CROSSBOW AND  
SECURE MOUNTING BRACKETS  
(6 PLACES PER CROSSBOW)**

**1/2 SOCKET  
1/2 WRENCH  
5/32 ALLEN**

INSTR. : 69484  
NUMBER

PG: 1  
REV: A

PART • Standard Drop ProLift  
NUMBER • Low & Compact Vans

PART ProLift Adjustment Instructions -  
DESC. • Standard Drop  
• Low Roof & Compact Vans

Step 3: With 1/2" Socket loosen nut, slide post so that it is snug against the ladder. Tighten nut

Step 1: With 1/2" Socket loosen nut, slide post so that it is snug against the ladder. Tighten nut

SLIDE FORWARD

SLIDE FORWARD

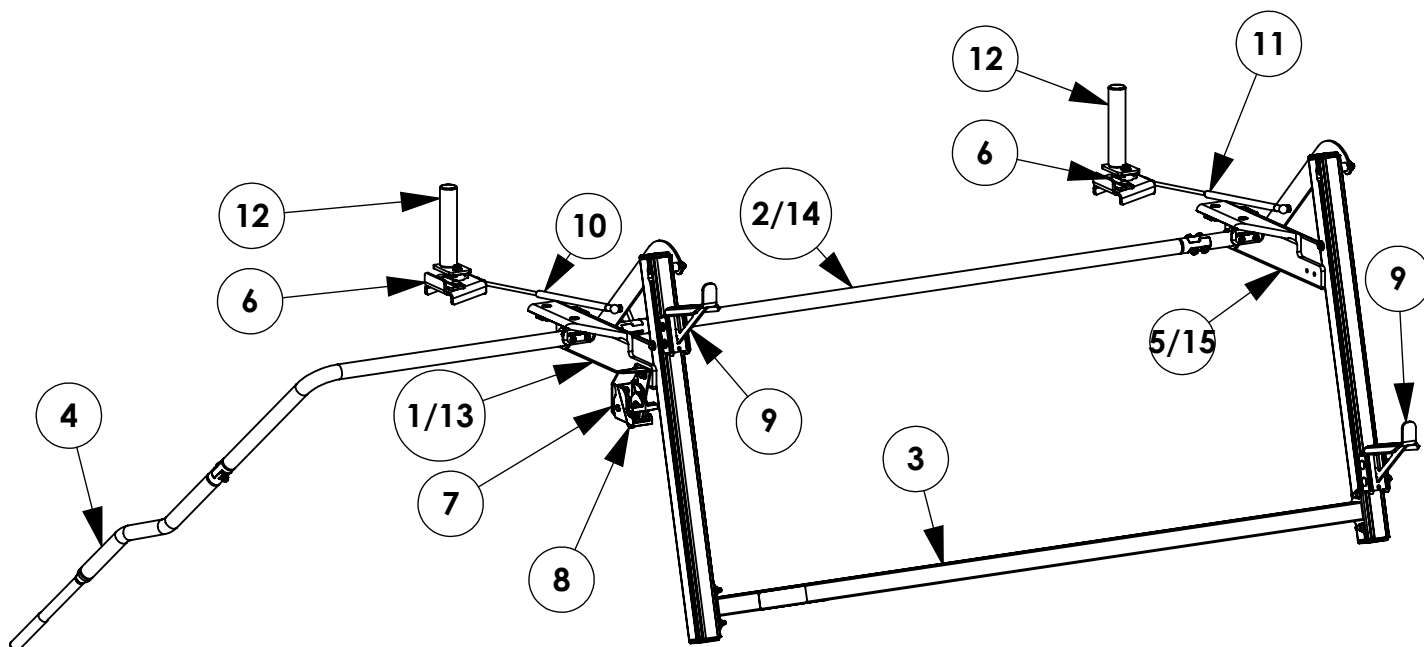
Step 4: With 1/2" Socket loosen nuts (X2) slide clamp so that it is snug against the ladder. Tighten nuts (X2)

Step 2: With 1/2" Socket loosen nuts (X2) slide clamp so that it is snug against the ladder. Tighten nuts (X2)

Once all brackets are adjusted operate rack to make sure clamps are not too tight

INSTR. : 68581 NUMBER :	PG:	REV:	ITEM NO.	PART NUMBER	DESCRIPTION	PLSDPSC	PLSDDSC
	1	B	1	68418-W	PROLIFT, CP, PS RR CRT, W	1	-
PART . PLSDDSC & NUMBER • PLSDPSC			2	68414-B	PROLIFT, CP, PS DLINE WLD, BLK	1	-
			3	68412-W	PROLIFT, CP, OS BAR WLD, BLK	1	1
			4	68435-B	PROLIFT, CP, OS BAR WLD, WHITE	1	1
			5	68031-W	DROP DOWN FRONT ARM ASSM PS, WHITE	1	-
PART • PROLIFT,STD,DS,CPT & DESC. • PROLIFT,STD,PS,CPT			6	68045-W	PROLIFT DAMPER MOUNT, WHITE	2	2
			7	68180-W	DROP DOWN LATCH BRACKET, WHITE	1	1
			8	25340-0	HANDLE LATCH-STD	1	1
			9	58239	COMPRESSION DAMPER	1	1
			10	68628-W	PROLIFT,HR,DAMPER BRKT, W	2	2
			11	68422-W	PROLIFFT, CP, DS RR CRT, WHITE	-	1
			12	68419-B	PROLIFT, CP, DS DLINE WLD, BLK	-	1
			13	68013-W	DROP DOWN FRONT ARM ASM DS, WHITE	-	1

- PART NUMBERS WITH "-W" SUFFIX ARE PAINTED WHITE  
- FOR BLACK MOUNTING KITS, REPLACE "-W" PARTS  
WITH "-B" PARTS



**TOOLS NEEDED:**

- 1/2" SOCKET
- 1/2" WRENCH
- 9/16" SOCKET
- 3/8" SOCKET
- DRIVE RATCHET
- 7/32" ALLEN WRENCH
- 3/16" ALLEN WRENCH
- 13mm WRENCH
- TAPE MEASURE
- RUBBER Mallet
- IMPACT DRIVER

**\*\*IF BUILDING A DUAL SIDED RACK BUILD BOTH SIDES IN PARALLEL  
FOR EACH STEP. IF BUILDING SINGLE SIDED REFERENCE ONLY THAT SIDE  
WHEN BUILDING.\*\***



**GET TO KNOW THE VEHICLE** - AT THE BEGINNING OF ANY INSTALLATION, CHECK THE LOCATION OF THE FUEL TANK, FUEL LINES, BRAKE LINES, HIGH VOLTAGE BATTERIES AND WIRING HARNESSSES TO AVOID INJURY OR PROPERTY DAMAGE FROM TOOL CONTACT.

**SEAL ALL EXTERIOR HOLES** - ALL INSTALLATION HOLES SHOULD BE SEALED WITH BUTYL TAPE OR SILICON TO PREVENT WATER AND EXHAUST GASES FROM ENTERING THE VEHICLE.

**CONTROL DRILL DEPTH** - TO AVOID DAMAGE TO THE VEHICLE, USE A DRILL STOP OR CLEARED STEP BIT WHEN DRILLING INSTALLATION HOLES.

**ALWAYS ADD PRIMER** - WHEN ADDING INSTALLATION HOLES BE SURE TO USE A SELF-ETCHING PRIMER TO PREVENT CORROSION, FASTENER FAILURE AND INJURY.

**MOUNTING POINTS MUST HAVE METAL-TO-METAL CONTACT** - USE PROVIDED MOUNTING SPACERS TO ACCOMMODATE FOR VEHICLE FEATURES, CARPET OR SUBFLOORS.

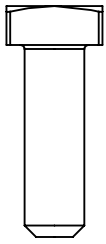
**PROVIDE CLEARANCE FOR SPACERS** - IF THE INSTALLATION VEHICLE CONTAINS A CARPET OR SUBFLOOR, USE A 1-3/16" DIAMETER CARPET CUTTER (P/N: 31183-0) AT ALL MOUNTING LOCATIONS TO OPEN UP ROOM FOR SPACERS.

**CHECK SPACER ORIENTATION** - BE SURE THAT THE INDENT IN THE SPACER COVERS THE PLUSNUT HEAD; THIS ENSURES THE MOST METAL-TO-METAL CONTACT AND REDUCES VIBRATION.

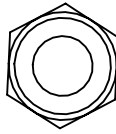
**PLUSNUT INSTALLATION** - A PLUSNUT GUN IS RECOMMENDED FOR PLUSNUT INSTALLATION FOR ITS PRODUCTION SPEED. HOWEVER, A PLUSNUT SETTING TOOL CAN ALSO BE USED (P/N: 22200-0).

**THRU-BOLT CLEARANCE** - WHEN USING A THRU-BOLT AT ANY MOUNTING LOCATION, BE SURE THAT YOUR HOLE HAS 1/16" CLEARANCE.

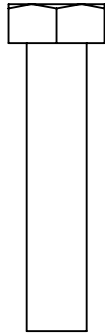
**FASTENERS AND HARDWARE USED**  
BAG REFERENCE: BAG68181 & BAG68182



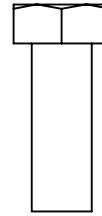
**FAS0035**  
5/16-18 X 1.0  
SQ HD, BOLT  
QTY: 4



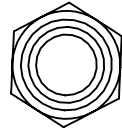
**FAS0110**  
3/8-19  
NYL HEX NUT  
QTY: 1



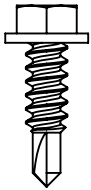
**FAS0242**  
5/16-18 X 1.5  
HH SCREW  
QTY: 4



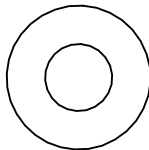
**FAS0283**  
5/16-18 X .875  
HH SCREW  
QTY: 2



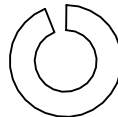
**FAS0399**  
3/8-16  
NYL HEX NUT  
QTY: 1



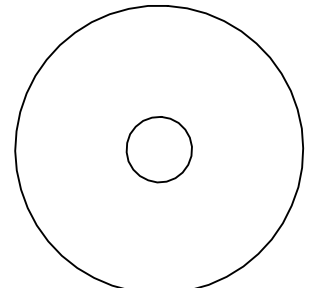
**FAS0473**  
#12 X .75  
HH TEK SCREW  
QTY: 4



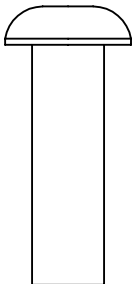
**FAS0552**  
5/16  
FLAT WASHER  
QTY: 8



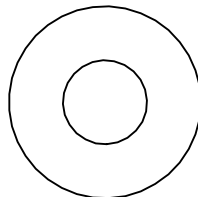
**FAS0588**  
5/16  
SPLIT WASHER  
QTY: 4



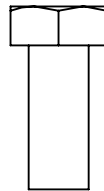
**DISCARD FAS0603**  
5/16 X 1.5 OD  
FENDER WASHER  
QTY: 2



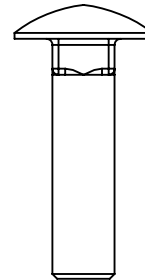
**FAS0701**  
3/8-16 X 1.25  
BHC SCREW  
QTY: 1



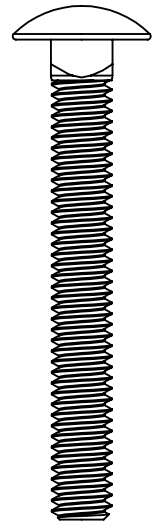
**FAS0720**  
3/8  
FLAT WASHER  
QTY: 1



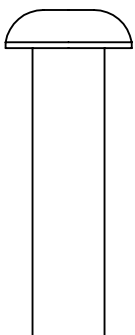
**FAS0799**  
5/16-18 X .75  
HH SCREW  
QTY: 2



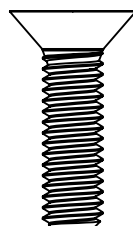
**FAS0812**  
5/16-18 X 1.25  
CRG BOLT  
QTY: 4



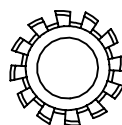
**FAS0838**  
5/16-18 X 2.5  
CRG BOLT  
QTY: 4



**FAS0819**  
3/8-16 X 1.5  
BHC SCREW  
QTY: 1



**FAS0856**  
5/16-18 X 1.125  
FHH SCREW  
QTY: 4



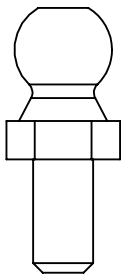
**FAS0857**  
5/16 CS  
LCK EXT WASHER  
QTY: 4



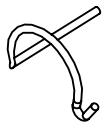
**FAS0861**  
5/16-18  
NLY HEX NUT  
QTY: 18

INTENTIONALLY LEFT BLANK

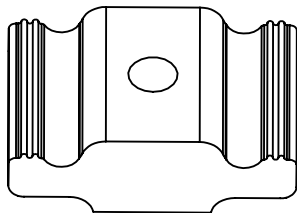
**FASTENERS AND HARDWARE USED**



**34927-0**  
**5/16-18 X 13mm**  
**BALL STUD**  
**QTY: 2**



**34928-0**  
**13mm RETAINER**  
**SPRING CLIP**  
**QTY: 4**



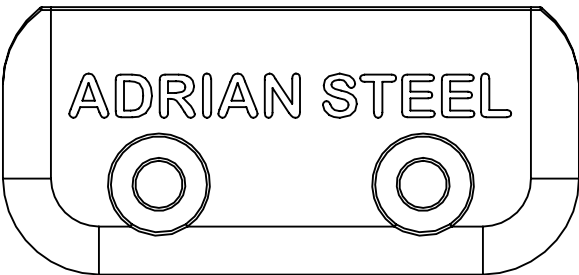
**63490**  
**1" RAIL SLIDE**  
**QTY: 6**



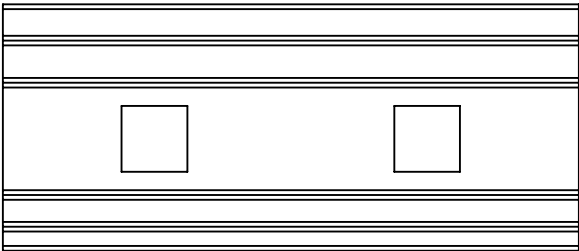
**64830**  
**BOLT PLATE**  
**REAR ROLLER**  
**QTY: 2**



**64831**  
**SPACER**  
**REAR ROLLER**  
**QTY: 2**



**65961**  
**DROP DOWN**  
**END CAP**  
**QTY: 2**



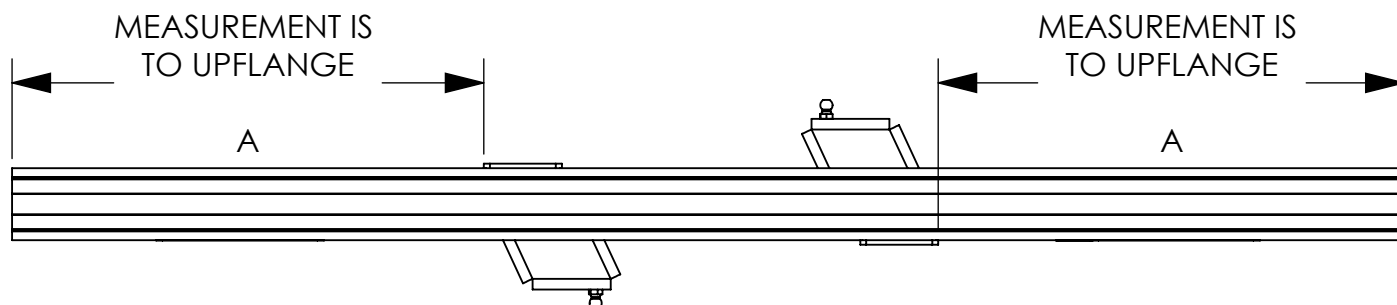
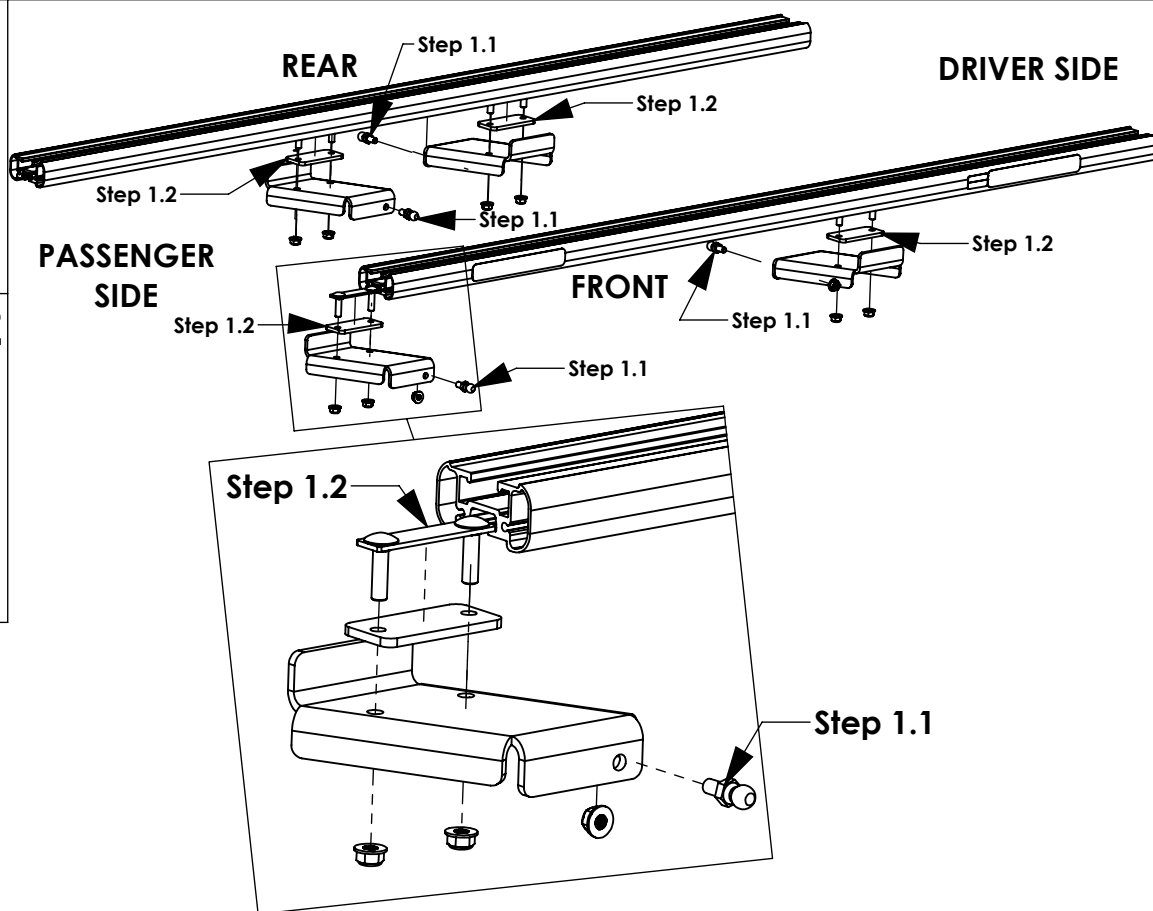
**65963-W**  
**STOP CLAMP**  
**WHITE**  
**QTY: 4**

**INTENTIONALLY LEFT BLANK**

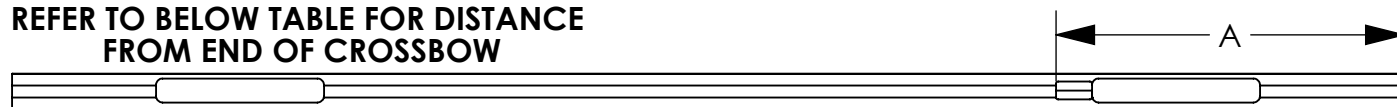
**STEP 1 - MOUNT DAMPER BRACKETS**

**Step 1.1**  
**FULLY TIGHTEN**  
**34927-0 & FAS0861**  
**(02 PLACES PER**  
**SIDE)**  
**13mm WRENCH**  
**1/2" SOCKET**

**STEP 1.2**  
**FULLY TIGHTEN**  
**(02) FAS0812,**  
**64830, 64831, &**  
**(02) FAS0861**  
**(02 PLACES PER**  
**SIDE)**  
**1/2" SOCKET**

**A.2**

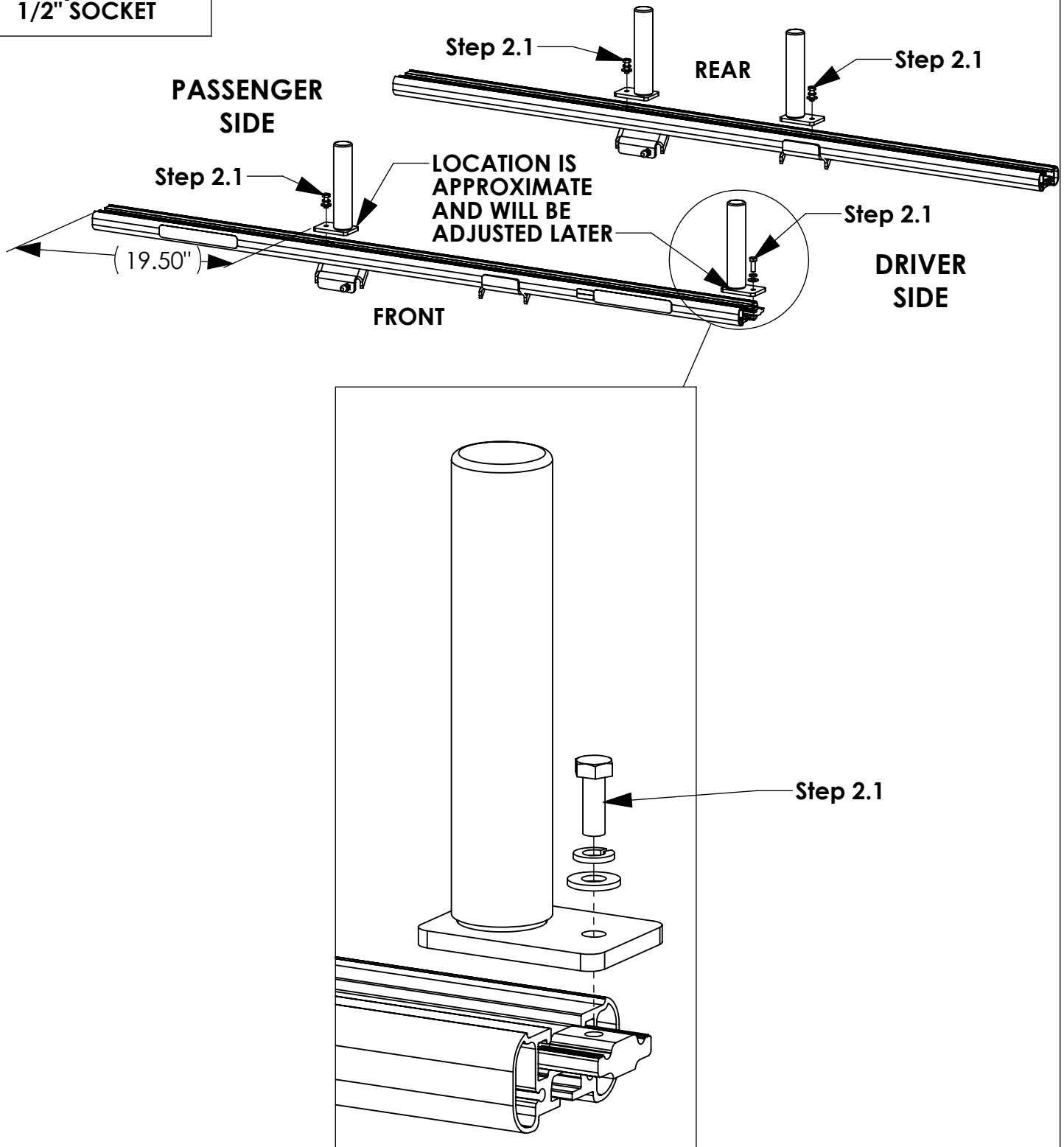
**REFER TO BELOW TABLE FOR DISTANCE**  
**FROM END OF CROSSBOW**

**TABLE: 68581-1**

VEHICLE	TRANSIT CONNECT LONG WB	TRANSIT CONNECT SHORT WB	PROMASTER CITY	MERCEDES METRIS LONG WB	MERCEDES METRIS SHORT WB
MEASUREMENT "A"	19 5/8"	19 5/8"	19 5/8"	19 5/8"	19 5/8"
CROSSBOW TYPE	48" CROSSBOW	48" CROSSBOW	58" CROSSBOW	58" CROSSBOW	58" CROSSBOW

**STEP 2 - MOUNT INNER STOPS TO CROSSBOW**

**Step 2.1**  
**B.1**  
FAS0283,  
FAS0552,  
FAS0861  
(2 PLACES PER  
SIDE)  
1/2" SOCKET



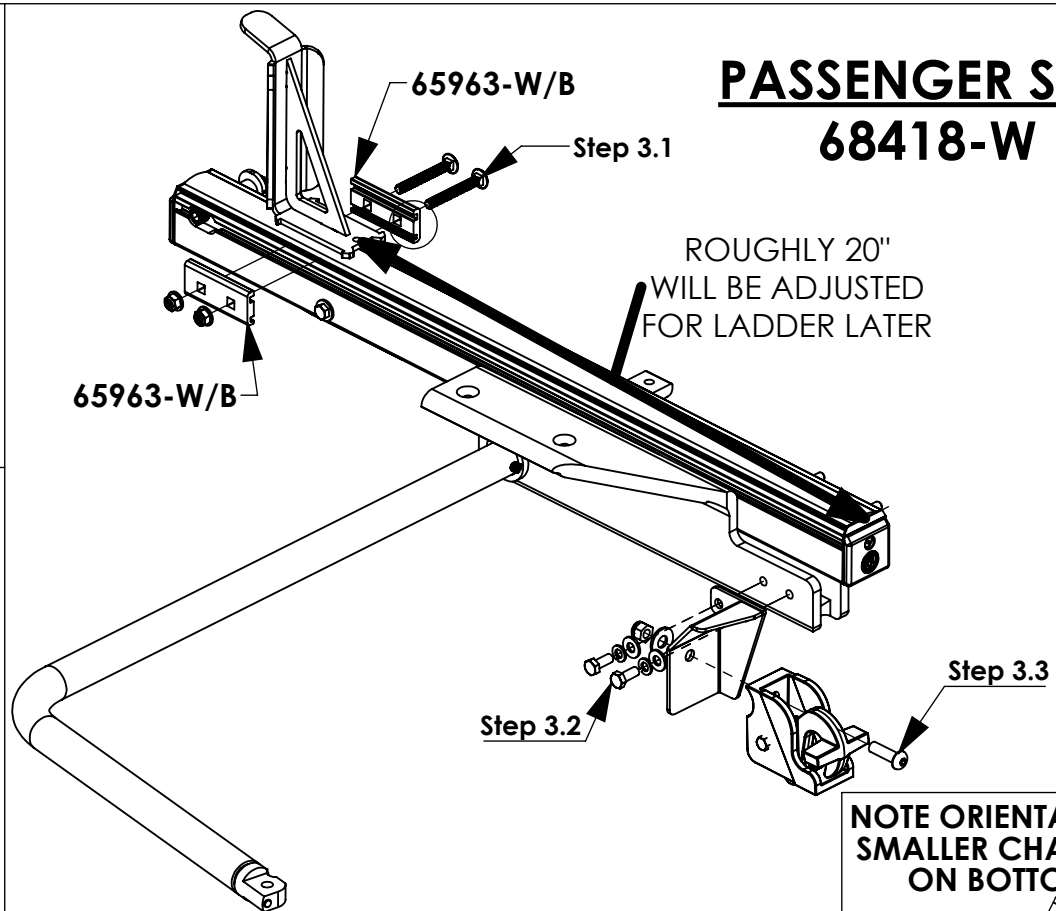
**STEP 3 - INSTALL CLAMPS AND HARDWARE ON DROP DOWN CARTRIDGES****REAR SUB-ASSEMBLY**

**STEP 3.1**  
**FULLY TIGHTEN**  
FAS0838 &  
FAS0861  
(02 PLACES)  
1/2" SOCKET

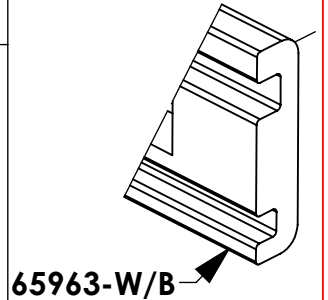
**STEP 3.2**  
**FULLY TIGHTEN**  
FAS0799,  
FAS0552, &  
FAS0588  
(02 PLACES)  
1/2" SOCKET

**STEP 3.3**  
**FULLY TIGHTEN**  
FAS0701, FAS0720,  
& FAS0110  
(01 PLACE)  
7/32" ALLEN  
9/16" SOCKET

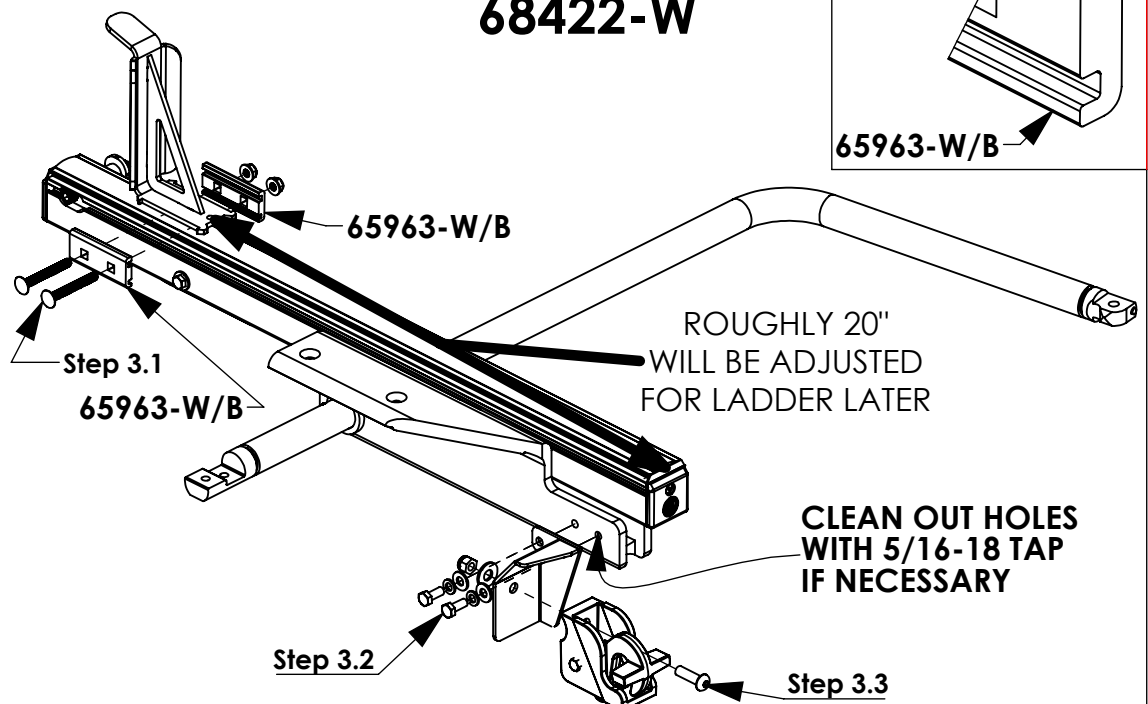
**PASSENGER SIDE**  
**68418-W**



**NOTE ORIENTATION:**  
**SMALLER CHANNEL**  
**ON BOTTOM**



**DRIVER SIDE**  
**68422-W**

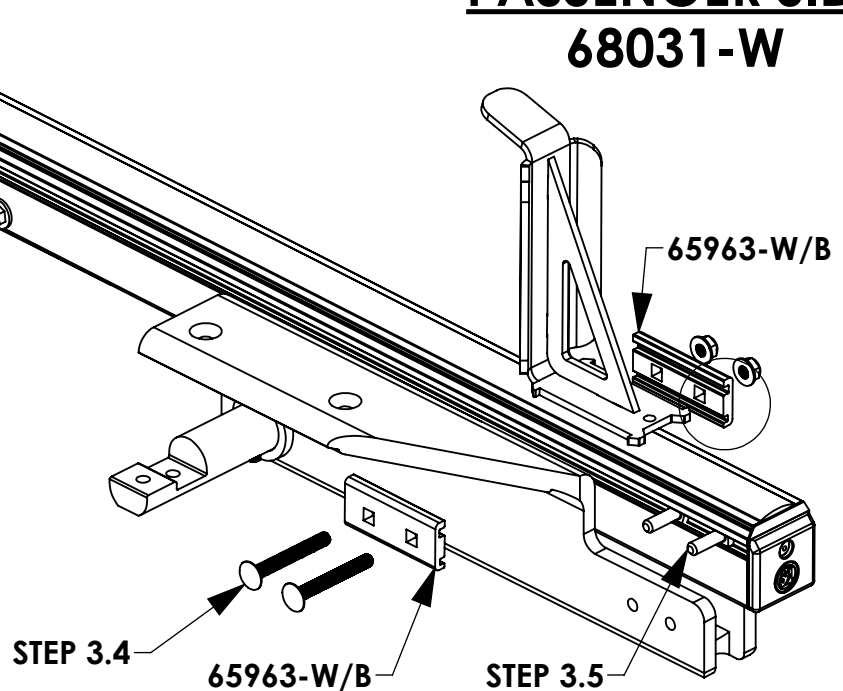




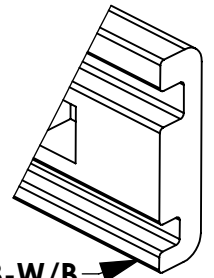
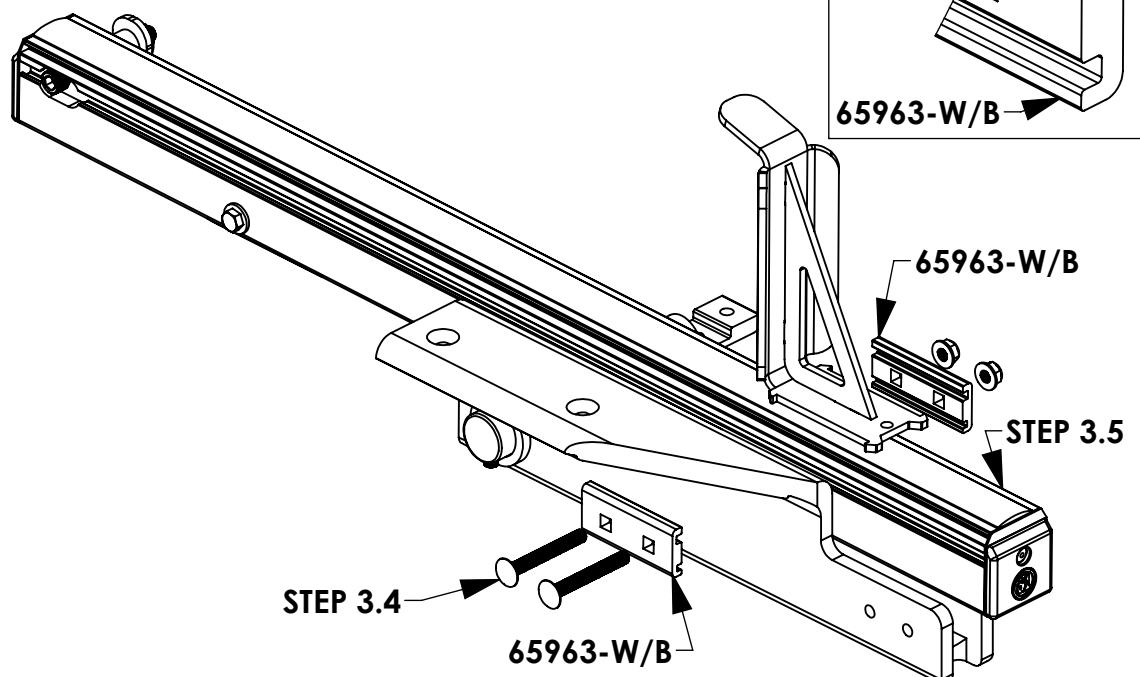
**STEP 3 - INSTALL CLAMPS AND HARDWARE ON DROP DOWN CARTRIDGES****FRONT SUB-ASSEMBLY**

**STEP 3.4**  
**FULLY TIGHTEN**  
**FAS0838 &**  
**FAS0861**  
**(02 PLACES)**  
**1/2" SOCKET**

**STEP 3.5**  
**FAS0035**  
**SLIDE INTO SLOT**  
**(02 PLACES)**

**PASSENGER SIDE**  
**68031-W**

**NOTE ORIENTATION:**  
**SMALLER CHANNEL**  
**ON BOTTOM**

**DRIVER SIDE**  
**68013-W**



**REFERENCE INSTALLATION GUIDE 68895 TABLES 1-3**  
**INSTALLATION OF A.1, A.2, B.1, & B.2 SHOULD BE**  
**COMPLETE BEFORE PROCEEDING TO STEP 4**

**STEP 4 - INSTALL CARTRIDGES ON CROSSBOWS**

**STEP 4.1**

SLIDE 63490 INTO  
END OF  
CROSSBOWS

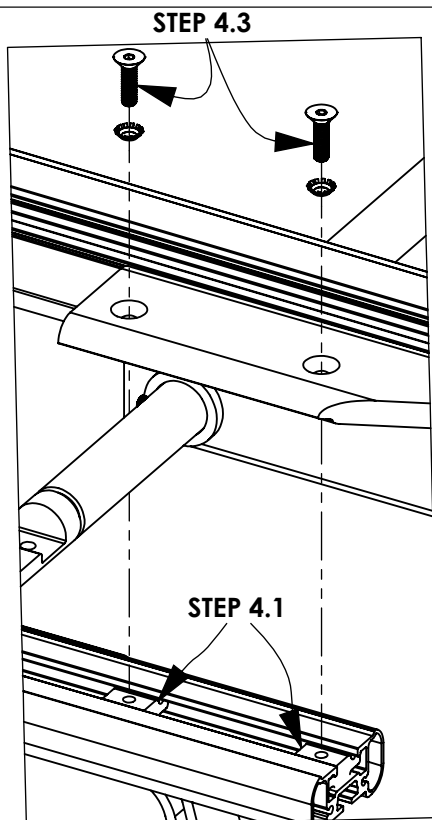
**C.1**

**STEP 4.2**

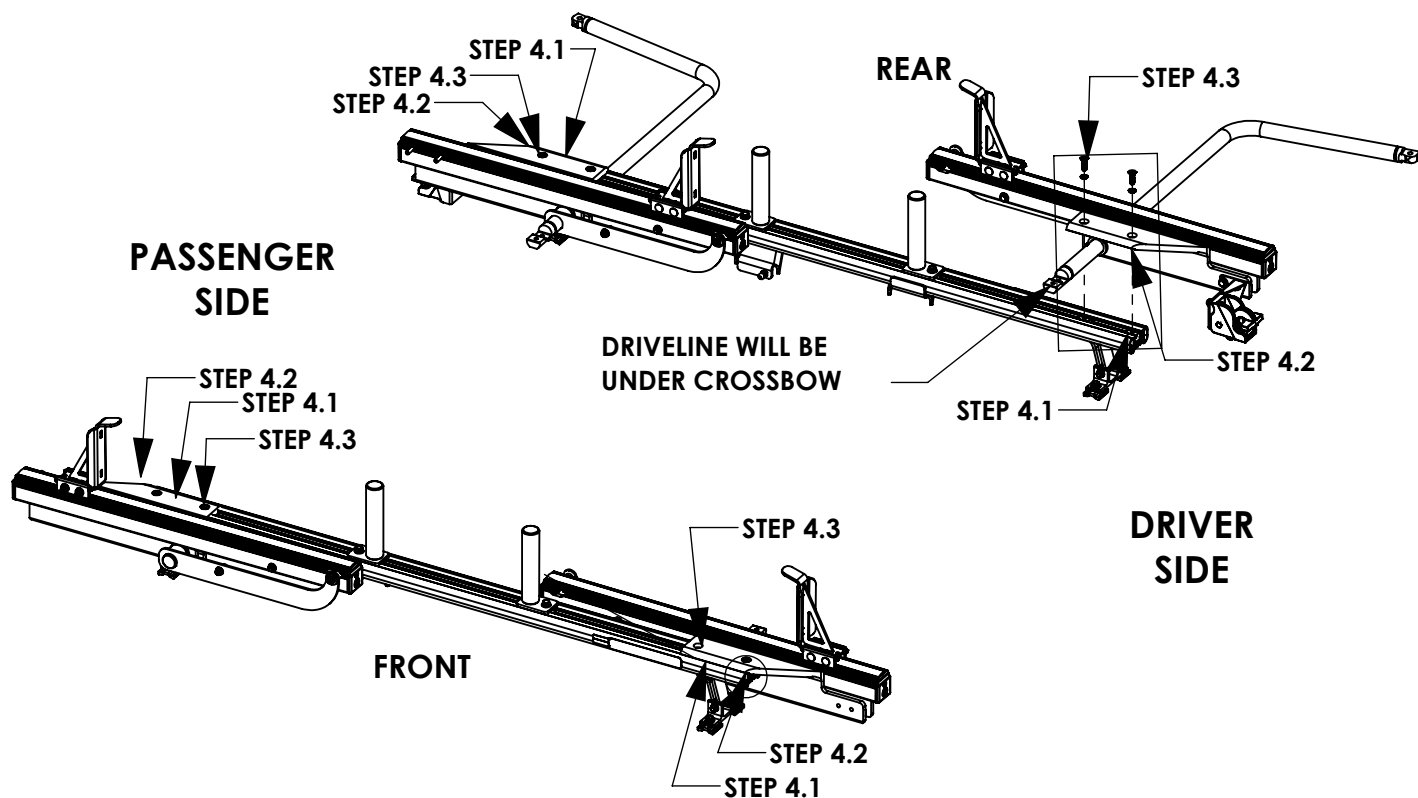
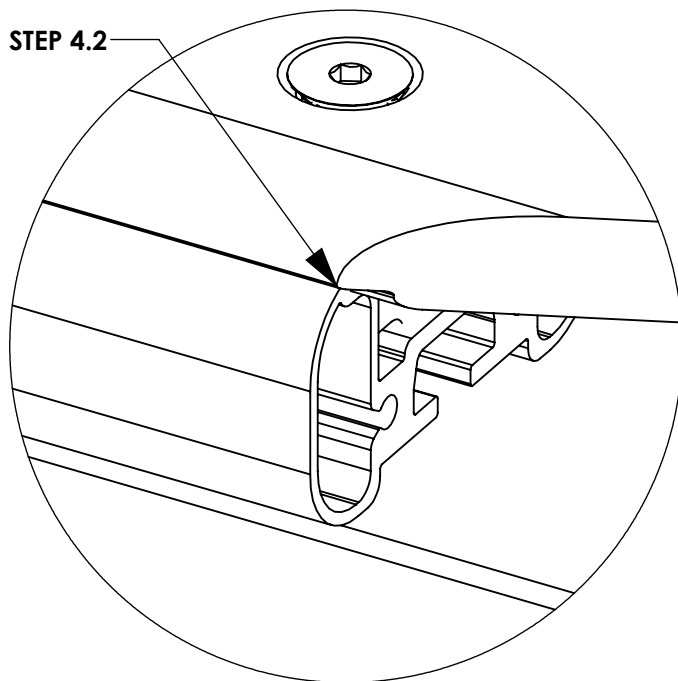
LINE UP CORNERS  
WITH END OF  
CROSSBOW

**STEP 4.3**

FULLY TIGHTEN  
(02) FAS0856,  
(02) FAS0857, &  
(02) 63490  
(02 PLACES PER  
SIDE)  
3/16" ALLEN



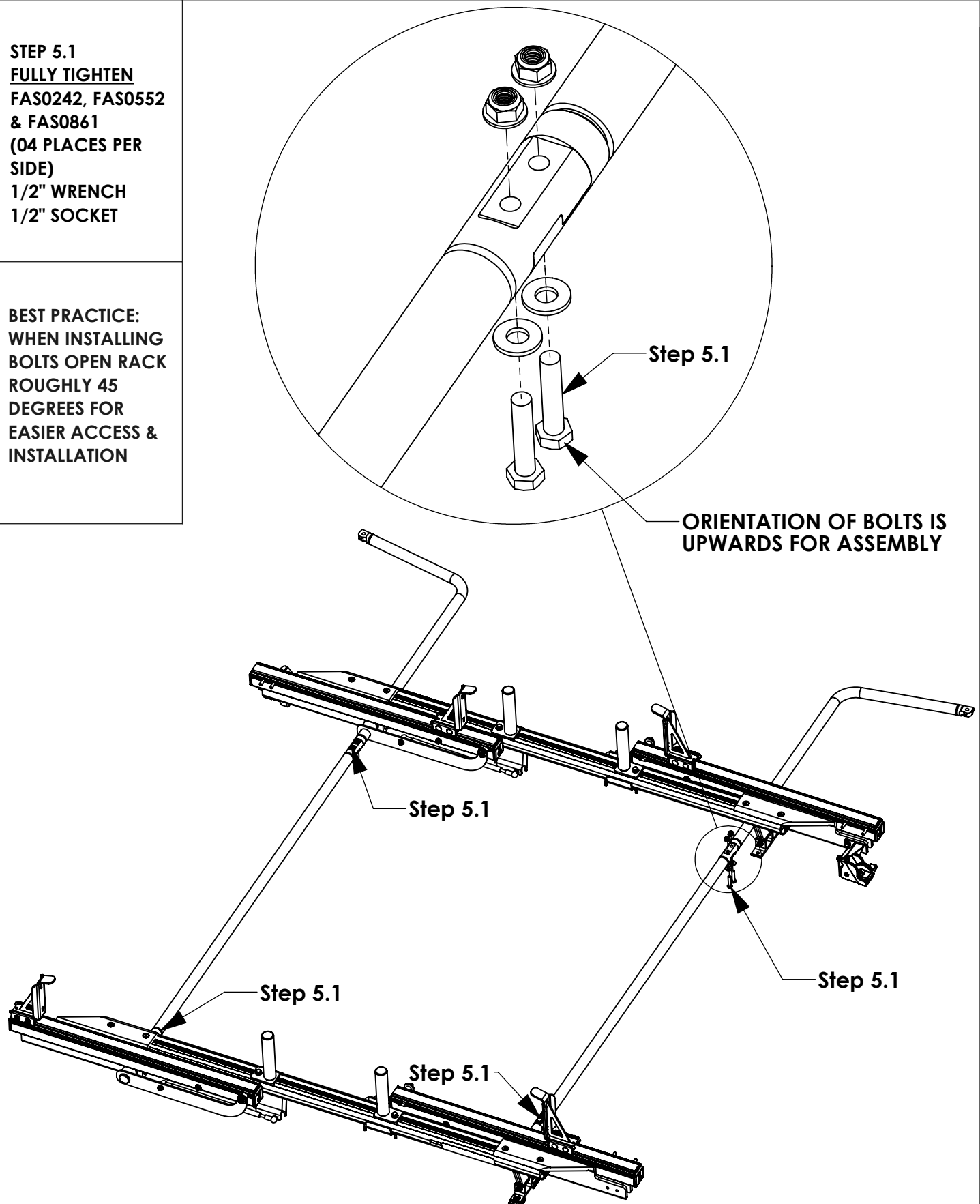
**STEP 4.2**



**STEP 5 - INSTALL DRIVELINE**

**STEP 5.1**  
**FULLY TIGHTEN**  
**FAS0242, FAS0552**  
**& FAS0861**  
**(04 PLACES PER**  
**SIDE)**  
**1/2" WRENCH**  
**1/2" SOCKET**

**BEST PRACTICE:**  
**WHEN INSTALLING**  
**BOLTS OPEN RACK**  
**ROUGHLY 45**  
**DEGREES FOR**  
**EASIER ACCESS &**  
**INSTALLATION**



# STEP 6 - DEPLOY RACK & INSTALL DAMPERS AND DROP DOWN HANDLE

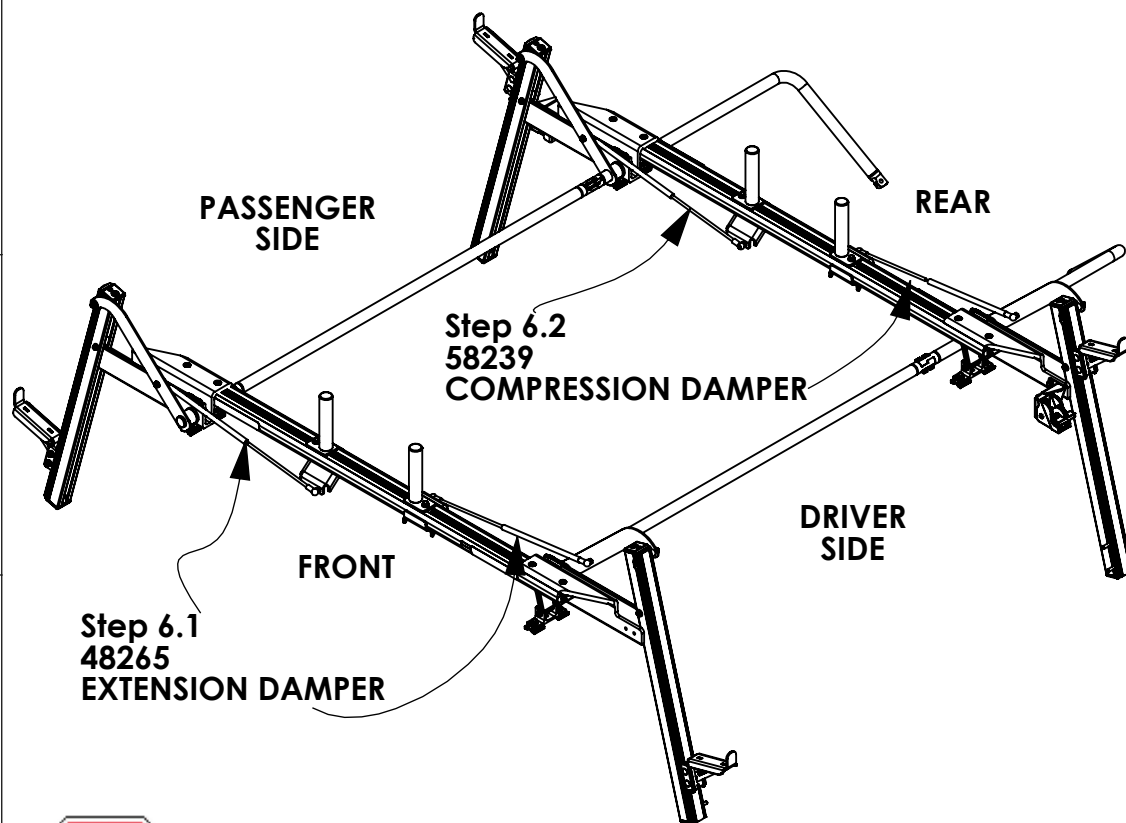
Step 6.1  
ATTACH EXTENSION  
DAMPERS (48625) TO  
BALL STUDS.

ORIENTATION OF  
DAMPER MATTERS!!!  
(01 PLACE PER SIDE)

Step 6.2  
ATTACH  
COMPRESSION  
DAMPERS (58239) TO  
BALL STUDS.

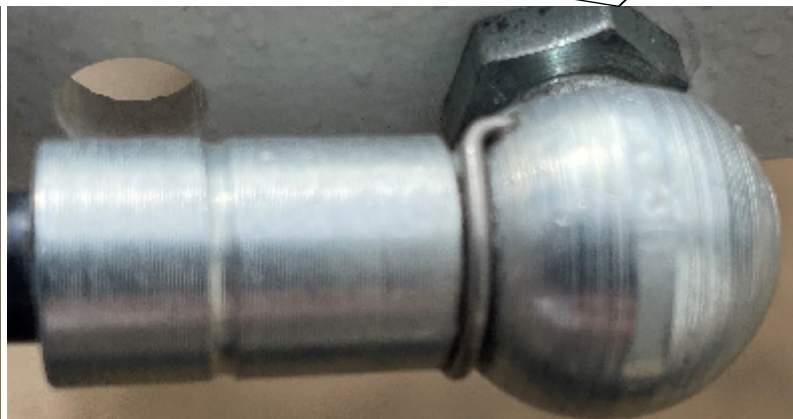
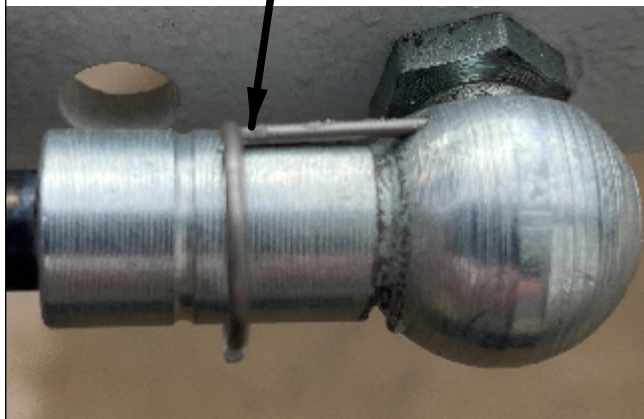
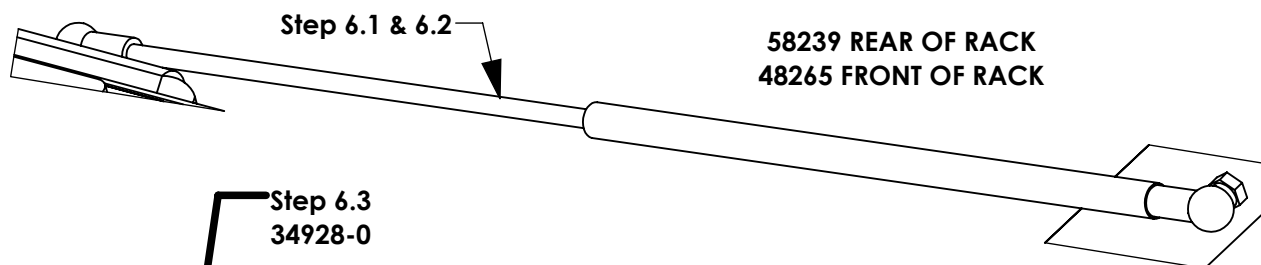
ORIENTATION OF  
DAMPER MATTERS!!!  
(01 PLACE PER SIDE)

Step 6.3  
INSERT LOCKING  
PINS (34928-0)  
AFTER MOUNTING  
DAMPERS TO BALL  
STUDS  
(04 PLACES PER SIDE)



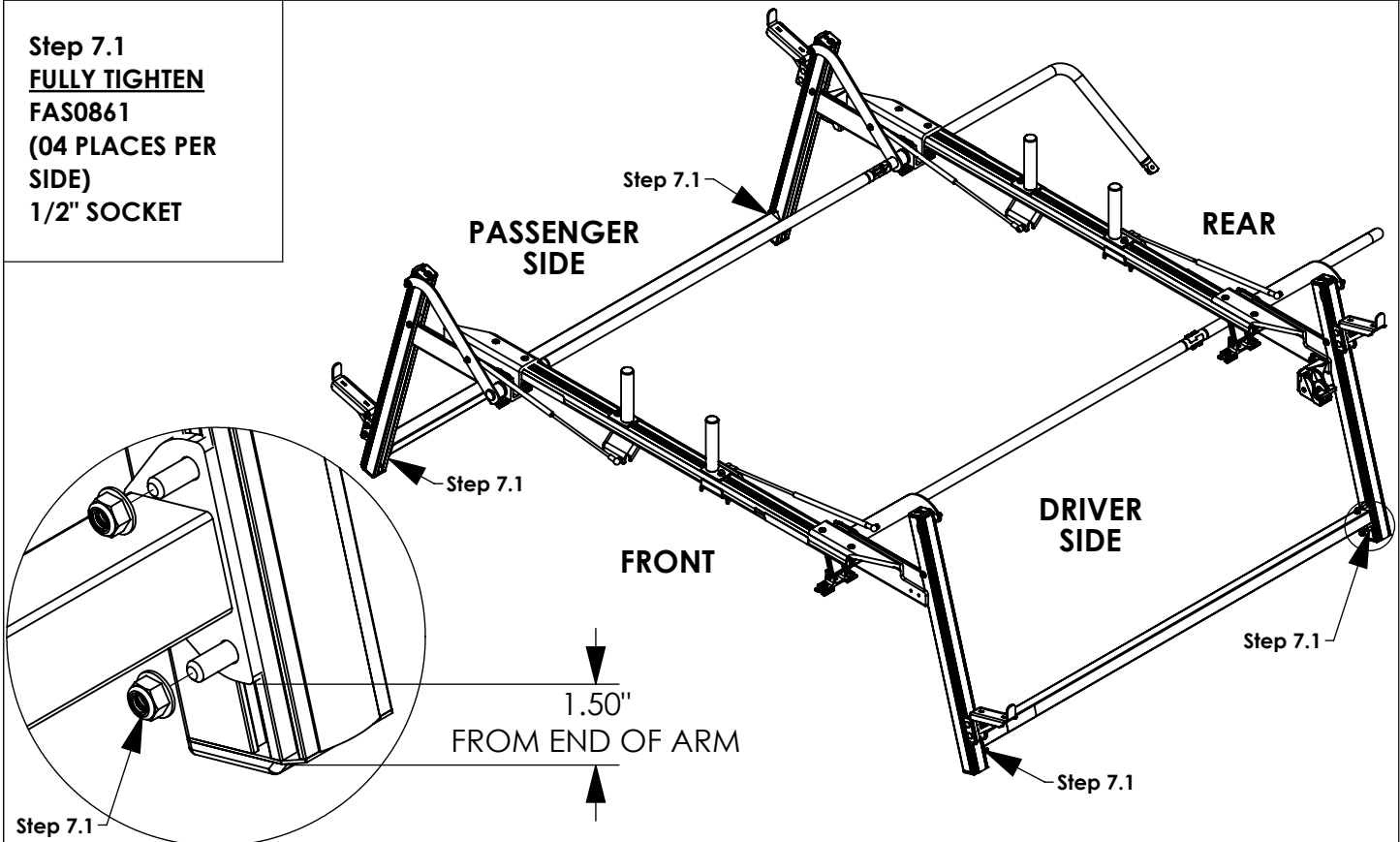
## ORIENTATION OF DAMPER MATTERS!!!!

LARGE CYLINDER OF DAMPER ATTACHES TO ARM  
SMALL ROD END ATTACHES TO DAMPER BRACKET

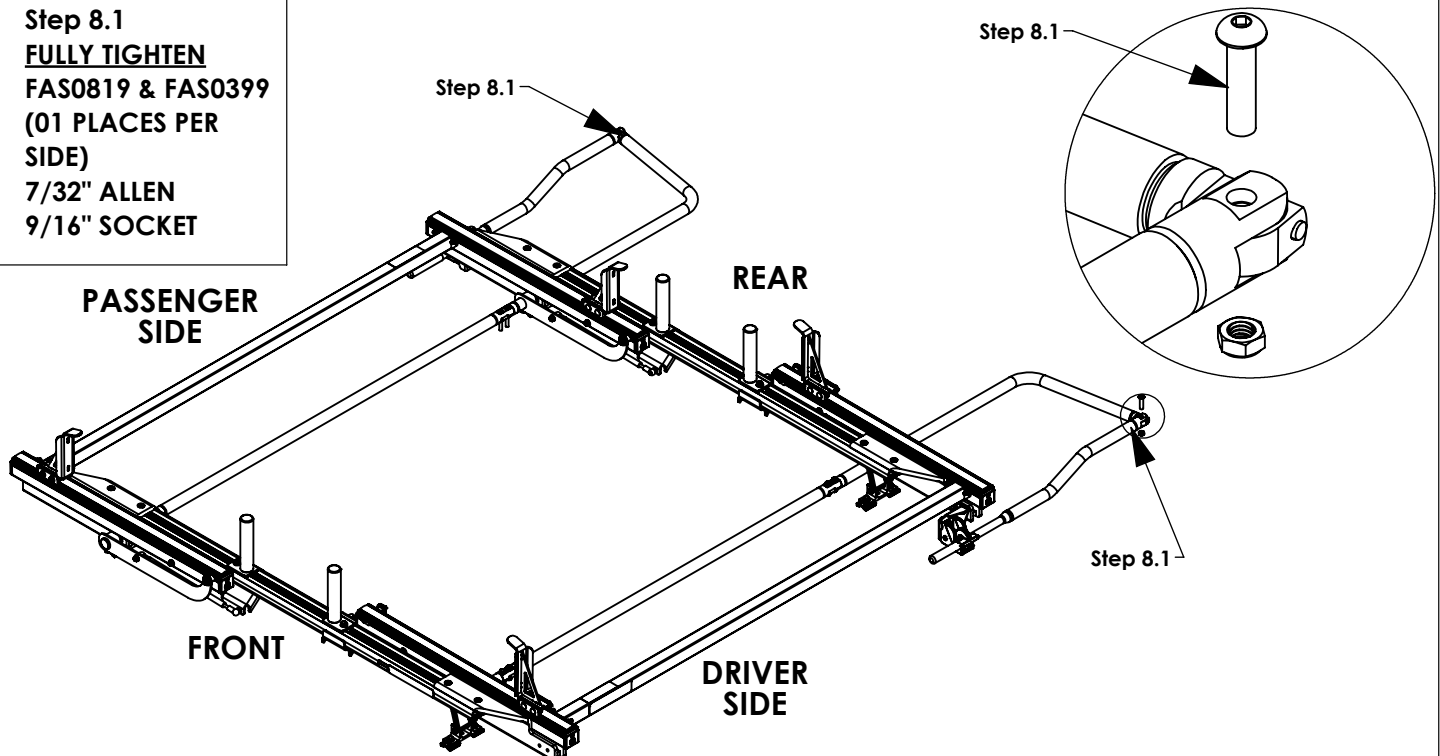


**STEP 7 - WHILE RACK DEPLOYED INSTALL O.S. BAR**

**Step 7.1**  
**FULLY TIGHTEN**  
**FAS0861**  
**(04 PLACES PER**  
**SIDE)**  
**1/2" SOCKET**

**STEP 8 - INSTALL DROP DOWN HANDLE**

**Step 8.1**  
**FULLY TIGHTEN**  
**FAS0819 & FAS0399**  
**(01 PLACES PER**  
**SIDE)**  
**7/32" ALLEN**  
**9/16" SOCKET**



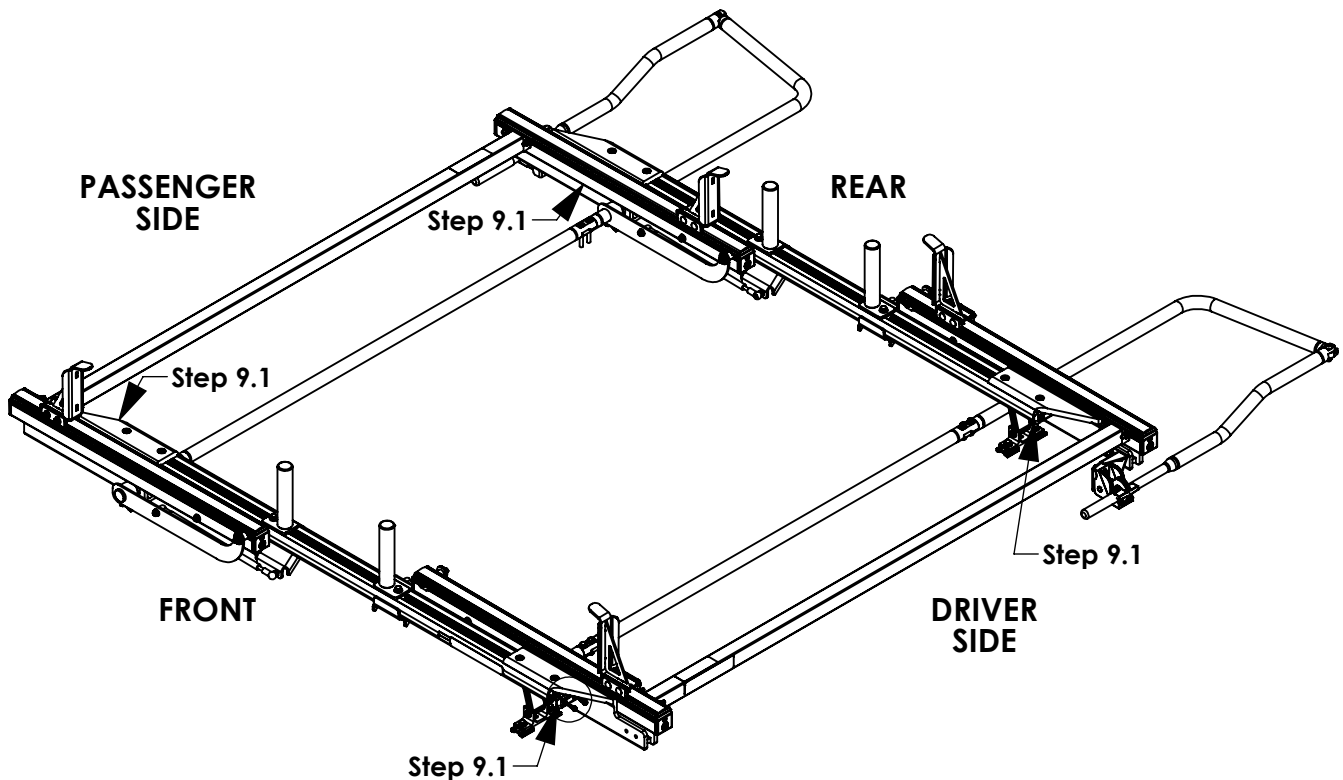
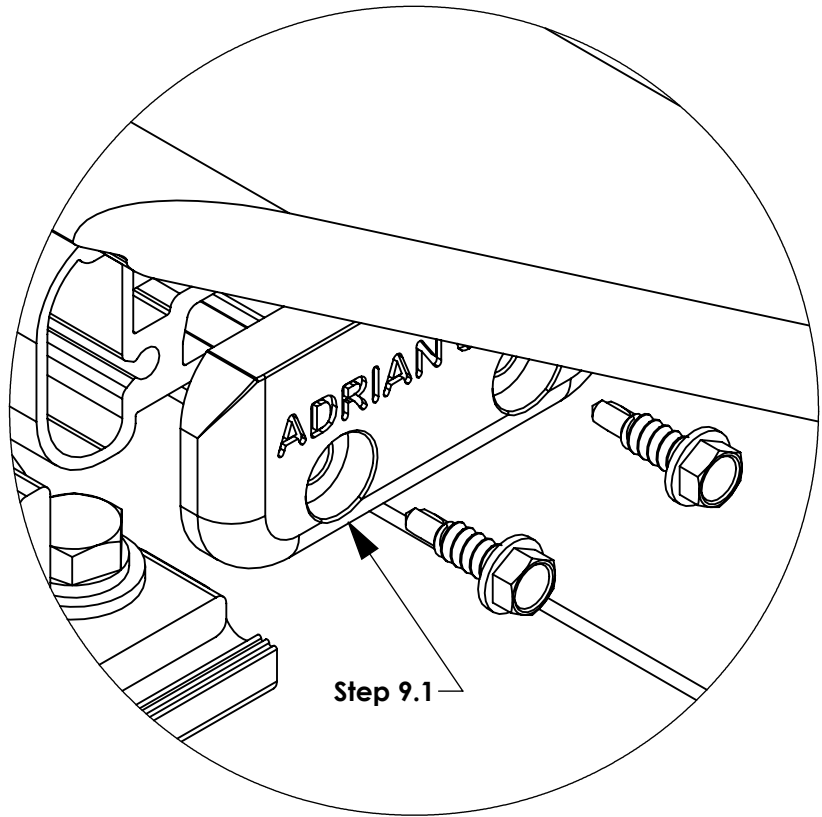
**MAKE SURE ALL FASTENERS ARE TIGHTENED!!! INSTALLATION IS COMPLETE**

**STEP 9 - INSTALL CROSSBOW END CAPS****Step 9.1****FULLY TIGHTEN**

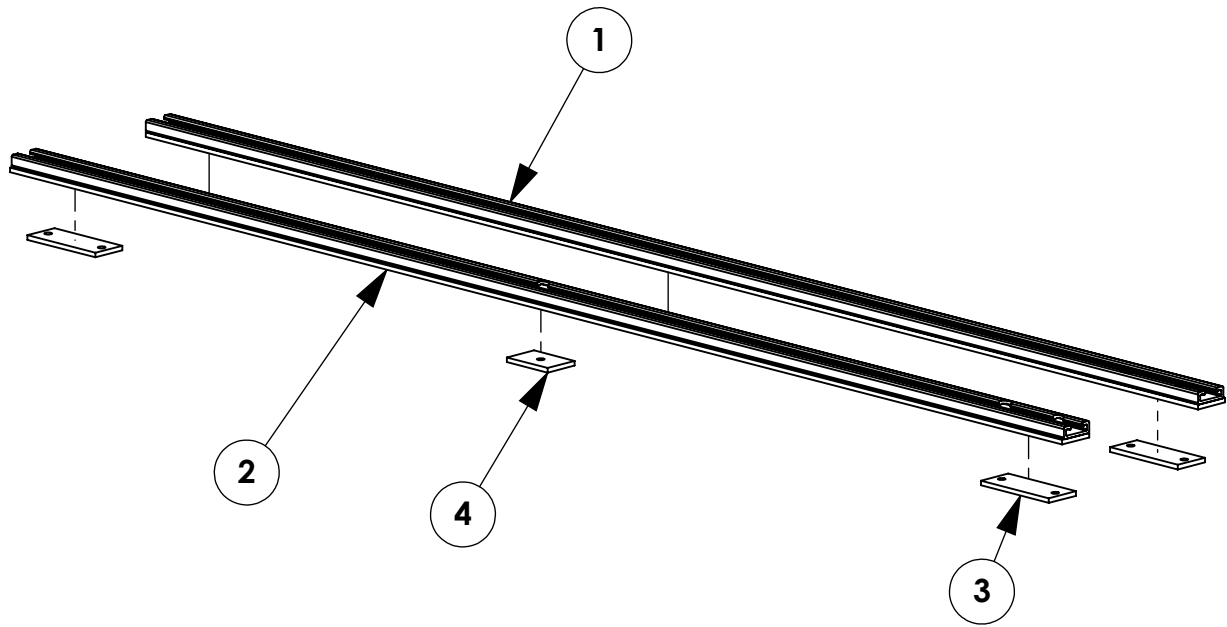
(02) AS0473, 65961

(02 PLACES PER  
SIDE)

3/8" SOCKET

**MAKE SURE ALL FASTENERS ARE TIGHTENED!!! INSTALLATION IS COMPLETE**

INSTR. NUMBER : 68578	PG: 1	REV: A	ITEM NO.	PART NUMBER	DESCRIPTION	QTY.
			1	68576	ROOF RAIL W/ FOAM,PMC,PS	1
PART NUMBER : RRKPMC			2	68577	ROOF RAIL KIT, PMC	1
PART : DESC. : ROOF RAIL KIT, PMC			3	54772	EPDM SPACER-PAD, 1/4 X 2 X 5	4
			4	54773	EPDM SPACER-PAD, 1/4 X 2 X 3	2



**GET TO KNOW THE VEHICLE** - AT THE BEGINNING OF ANY INSTALLATION, CHECK THE LOCATION OF THE FUEL TANK, FUEL LINES, BRAKE LINES, HIGH VOLTAGE BATTERIES AND WIRING HARNESSSES TO AVOID INJURY OR PROPERTY DAMAGE FROM TOOL CONTACT.

**SEAL ALL EXTERIOR HOLES** - ALL INSTALLATION HOLES SHOULD BE SEALED WITH BUTYL TAPE OR SILICON TO PREVENT WATER AND EXHAUST GASES FROM ENTERING THE VEHICLE.

**CONTROL DRILL DEPTH** - TO AVOID DAMAGE TO THE VEHICLE, USE A DRILL STOP OR CLEARED STEP BIT WHEN DRILLING INSTALLATION HOLES.

**ALWAYS ADD PRIMER** - WHEN ADDING INSTALLATION HOLES BE SURE TO USE A SELF-ETCHING PRIMER TO PREVENT CORROSION, FASTENER FAILURE AND INJURY.

**MOUNTING POINTS MUST HAVE METAL-TO-METAL CONTACT** - USE PROVIDED MOUNTING SPACERS TO ACCOMMODATE FOR VEHICLE FEATURES, CARPET OR SUBFLOORS.

**PROVIDE CLEARANCE FOR SPACERS** - IF THE INSTALLATION VEHICLE CONTAINS A CARPET OR SUBFLOOR, USE A 1-3/16" DIAMETER CARPET CUTTER (P/N: 31183-0) AT ALL MOUNTING LOCATIONS TO OPEN UP ROOM FOR SPACERS.

**CHECK SPACER ORIENTATION** - BE SURE THAT THE INDENT IN THE SPACER COVERS THE PLUSNUT HEAD; THIS ENSURES THE MOST METAL-TO-METAL CONTACT AND REDUCES VIBRATION.

**PLUSNUT INSTALLATION** - A PLUSNUT GUN IS RECOMMENDED FOR PLUSNUT INSTALLATION FOR ITS PRODUCTION SPEED. HOWEVER, A PLUSNUT SETTING TOOL CAN ALSO BE USED (P/N: 22200-0).

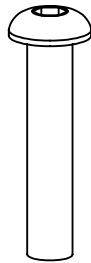
**THRU-BOLT CLEARANCE** - WHEN USING A THRU-BOLT AT ANY MOUNTING LOCATION, BE SURE THAT YOUR HOLE HAS 1/16" CLEARANCE.



***FASTENERS USED***



**FAS0234  
1/4 SS  
FLAT WASHER  
QTY: 10**



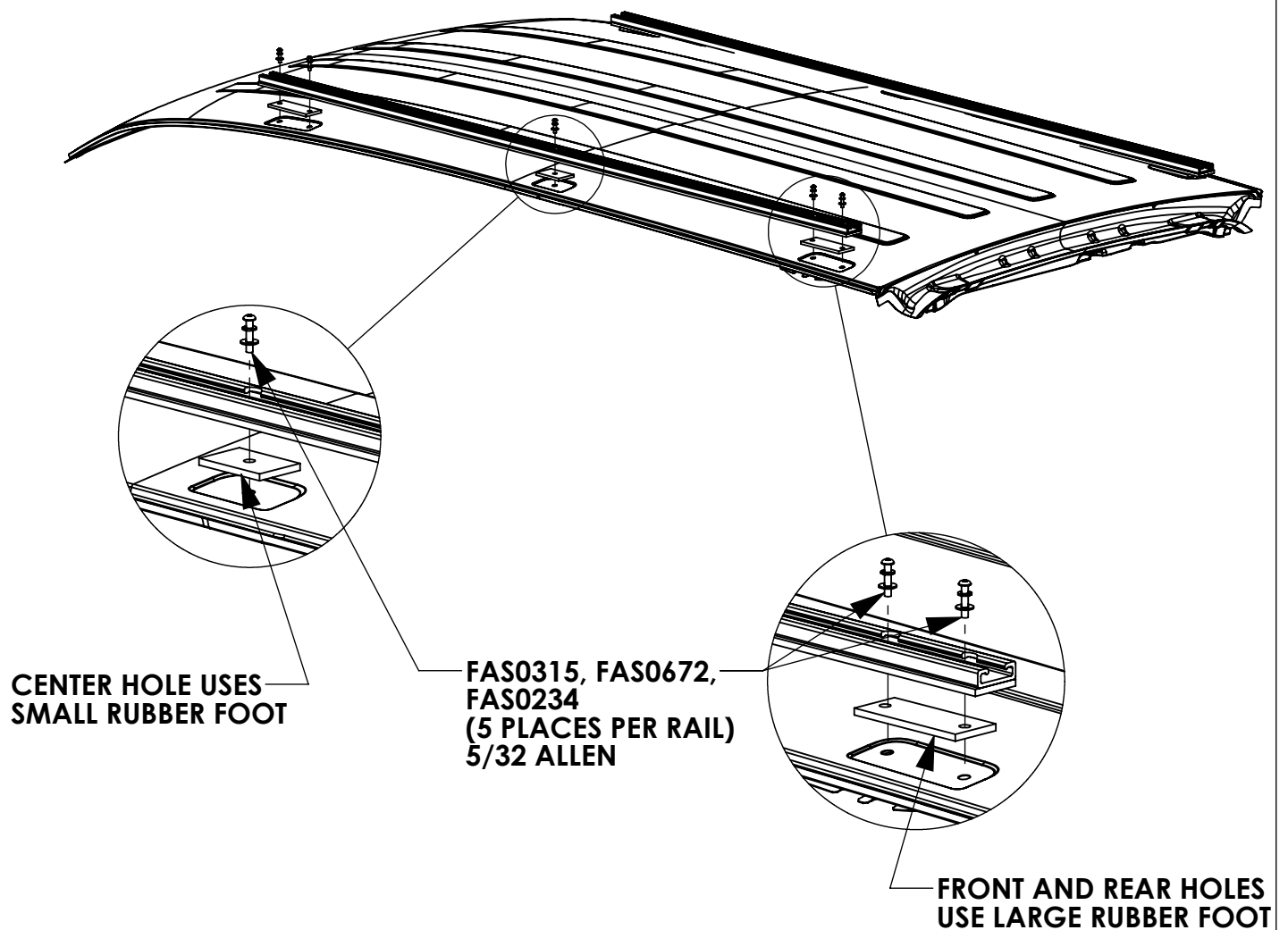
**FAS0315  
M6-1 X 30mm SS  
BHC SCREW  
QTY: 10**



**FAS0672  
1/4 SS  
SPLIT WASHER  
QTY: 10**

**STEP 1 - PREP ROOF HOLES**

a) REMOVE OEM PLASTIC PLUGS FROM ALL 10 ROOF MOUNTING LOCATIONS.

**STEP 2 - INSTALL ROOF RAILS**

**NOTE: END CAPS CANNOT BE ADDED UNTIL AFTER MOUNTING BRACKET KIT IS INSTALLED.**



## 2-Crossbar Kit, 58", White, Minivan



PRODUCT WEIGHT

**16.1 LBS**

CROSSBOW LENGTH X  
HEIGHT

**59" x 2"**

CAPACITY

**REFER TO OEM'S  
RECOMMENDED LOAD  
RATING**

COLOR

**WHITE**

CATALOG NUMBER

**2BARCW**

### PRODUCT FEATURES

Aluminum base 2-crossbow kit for PROFILE™ HD Utility, grip lock, drop down, or combo ladder racks. Works with all compact van platforms for each respective wheelbase and Ford Transit Ship Thru. Works with and without OEM specific rail kit and generic mounting bracket kits.

Optional uprights and conduit kits available.

Please refer to OEM specific mounting kit or rail kit for additional information on compatible accessories.

# INSTALLATION GUIDE FOR PROFILE™ SERIES LADDER RACKS

INSTRUCTION #:  
**68895**

REV:  
**C**



THIS INSTRUCTION PROVIDES A GENERAL GUIDE OF INSTALLATION SEQUENCE FOR ALL PROFILE™ SERIES LADDER RACKS. PLEASE ENSURE ALL ACCESSORIES ARE INSTALLED PER TYPE OF RACK BEFORE PROCEEDING TO NEXT PAGE.

REFERENCE THIS INSTRUCTION THROUGHOUT THE ENTIRETY OF YOUR INSTALL TO PREVENT ACCESSORIES BEING INSTALLED INCORRECTLY/OUT OF SEQUENCE!

**STEPS 2T - 8T ON PAGE 3 IS THE RECOMMENDED ASSEMBLY SEQUENCE FOR A FULL TABLE ASSEMBLY BEFORE INSTALLING ON THE ROOF OF THE VEHICLE.**

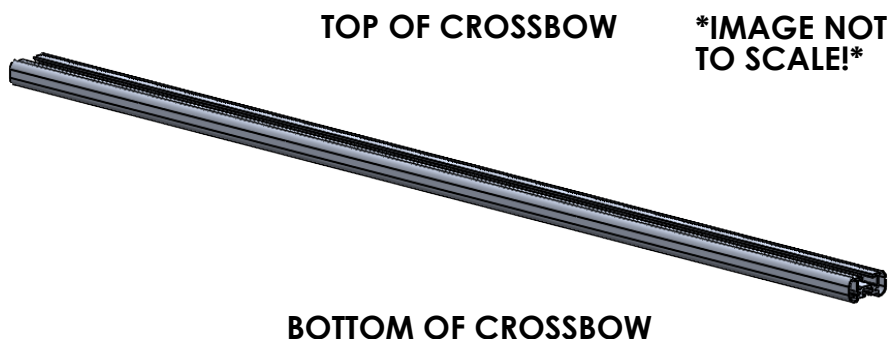
**STEPS 2R - 8R ON PAGE 4 IS AN ALTERNATE ASSEMBLY SEQUENCE TO INSTALL THE RACK ON THE VEHICLE ROOF AS IT IS BUILT.**

PLEASE SELECT THE ASSEMBLY SEQUENCE THAT BEST WORKS FOR YOU!

## ASSEMBLY STEPS:

**STEP 1A. SUB-ASSEMBLE EACH CROSSBOW WITH DESIRED ACCESSORIES FOR SECTIONS A.1 & A.2.**

**INSTRUCTIONS FOR EACH KIT CAN BE FOUND IN THEIR RESPECTIVE CARTON!**



## TABLE 1

### TOP OF CROSSBOW

#### COMPONENTS TO INSTALL

A.1	HD UTILITY	- CONDUIT KIT OR BEACON
	Grip-Lock	- CONDUIT KIT OR BEACON
	ProLift	- CONDUIT KIT OR BEACON

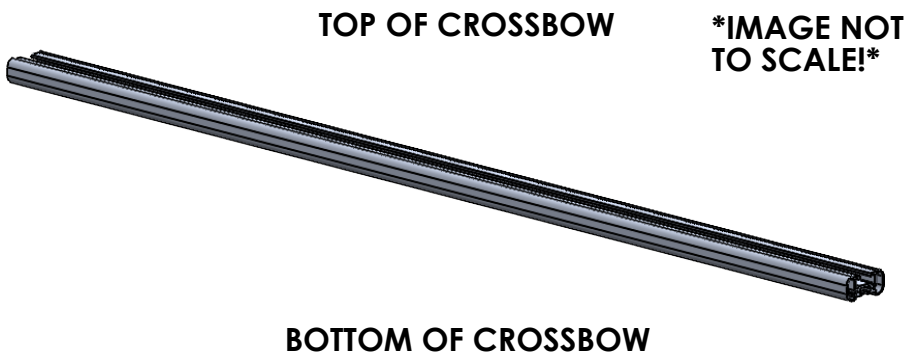
### BOTTOM OF CROSSBOW

#### COMPONENTS TO INSTALL

A.2	HD UTILITY	- LADDER STOP, STROBE BRACKET, AND/OR REAR ROLLER
	Grip-Lock	- Grip-Lock SUB-ASSEMBLY
	ProLift	- DAMPER BRACKET

**STEP 1B. SUB-ASSEMBLE EACH CROSSBOW WITH DESIRED ACCESSORIES FOR SECTIONS B.1 & B.2.**

**INSTRUCTIONS FOR EACH KIT CAN BE FOUND IN THEIR RESPECTIVE CARTON!**



**TABLE 2**

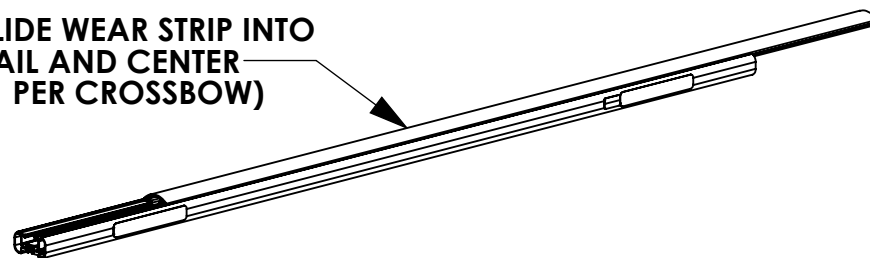
TOP OF CROSSBOW		
	COMPONENTS TO INSTALL	
<b>B.1</b>	<u>HD UTILITY</u>	- WEAR STRIP (MODIFY IF NECESSARY, TABLE 3)
	<u>Grip-Lock</u>	- WEAR STRIP (MODIFY IF NECESSARY, TABLE 3)
	<u>ProLift</u>	- INNER STOP POST
BOTTOM OF CROSSBOW		
	COMPONENTS TO INSTALL	
<b>B.2</b>	<u>HD UTILITY</u>	- MOUNTING BRACKETS
	<u>Grip-Lock</u>	- MOUNTING BRACKETS
	<u>ProLift</u>	- MOUNTING BRACKETS

**ALTER WEAR STRIP AND INSTALL ON CROSSBOW (IF APPLICABLE)! REFERENCE TABLE 3 BELOW FOR WEAR STRIP ALTERATION INSTRUCTIONS!**

**TABLE 3**

ADDED ACCESSORIES	ALTERATION FOR WEAR STRIP
4" UPRIGHT***	REMOVE 2" FROM END OF WEAR STRIP
4" PVC CONDUIT KIT	REMOVE 7.25" FROM CENTER OF WEAR STRIP
6" PVC CONDUIT KIT	REMOVE 9.50" FROM CENTER OF WEAR STRIP
ALUMINUM BOX CONDUIT KIT	REMOVE 13.25" FROM CENTER OF WEAR STRIP
BEACON	REMOVE 4" FROM CENTER OF WEAR STRIP
ProLift (SINGLE SIDE)	CUT WEAR STRIP IN HALF, DO NOT INSTALL ON ProLift SIDE
ProLift (DUAL SIDE)	DO NOT INSTALL WEAR STRIP

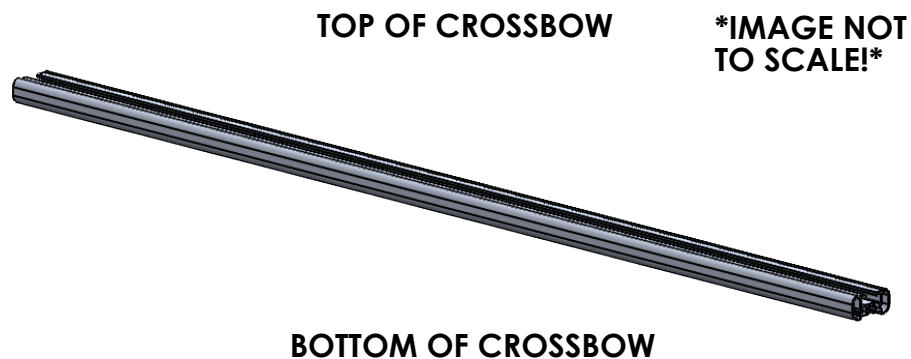
**SLIDE WEAR STRIP INTO RAIL AND CENTER (1 PER CROSSBOW)**



**SLIDE ONE SIDE OF WEAR STRIP INTO CROSSBOW, THEN ROLL OTHER SIDE TO SNAP STRIP INTO PLACE**



**STEP 1C SUB-ASSEMBLE EACH CROSSBOW WITH  
DESIRED ACCESSORIES FOR SECTIONS C.1 & C.2**



**TABLE 4**

TOP OF CROSSBOW		
	COMPONENTS TO INSTALL	
C.1	HD UTILITY	- 4" UPRIGHT
	Grip-Lock	- N/A
	ProLift	- SLIDES FOR BASE EXTRUSION
BOTTOM OF CROSSBOW		
	COMPONENTS TO INSTALL	
C.2	HD UTILITY	- UPRIGHTS (6", 9", RATCHET)
	Grip-Lock	- STROBES
	ProLift	- STROBES

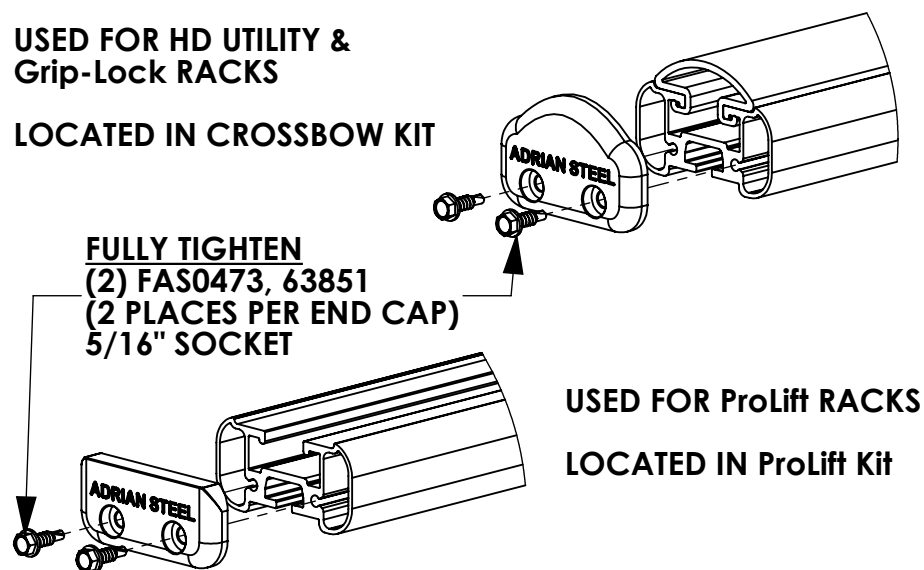
**ASSEMBLY STEPS (FULL BENCH ASSEMBLY):**

- 2T. ADD DRIVELINES (IF INSTALLING ProLift)
- 3T. ADD HANDLES (IF INSTALLING Grip-Lock OR ProLift) AND DAMPERS (IF INSTALLING ProLift)
- 4T. ADD OUTER SUPPORT BARS (IF INSTALLING Grip-Lock OR ProLift)
- 5T. ADD STEP LADDER KIT (Grip-Lock OR ProLift ONLY!)

**6T. ASSEMBLE ENDS CAPS TO CROSSBOW**

USED FOR HD UTILITY &  
Grip-Lock RACKS

LOCATED IN CROSSBOW KIT



USED FOR ProLift RACKS  
LOCATED IN ProLift Kit

**7T. INSTALL ROOF RAIL KIT ON VEHICLE ROOF OR BOTTOM MOUNTING BRACKETS**

(ROOF RAIL KIT REQUIRED FOR Grip-Lock & ProLift  
OPTIONAL FOR HD UTILITY, NOT NEEDED FOR GM LADDER  
RACKS)

**8T. MOUNT CROSSBOW SUB-ASSEMBLIES FROM STEP 1 TO  
VEHICLE/MOUNTING BRACKET, OR ROOF RAIL  
(LOOSE INSTALL)**

**ALTERNATE ASSEMBLY METHOD!**  
**(ASSEMBLE ON VEHICLE ROOF):**

2R. INSTALL ROOF RAIL KIT ON VEHICLE ROOF OR BOTTOM MOUNTING BRACKETS

(ROOF RAIL KIT REQUIRED FOR Grip-Lock & ProLift, OPTIONAL FOR HD UTILITY, NOT NEEDED FOR GM LADDER RACKS)

3R. MOUNT CROSSBOW SUB-ASSEMBLIES FROM STEP 1 TO VEHICLE/MOUNTING BRACKET, OR ROOF RAIL (LOOSE INSTALL)

4R. ADD DRIVELINES (IF INSTALLING ProLift)

5R. ADD HANDLES (IF INSTALLING Grip-Lock OR ProLift) AND DAMPERS (IF INSTALLING ProLift)

6R. ADD OUTER SUPPORT BARS (IF INSTALLING Grip-Lock OR ProLift)

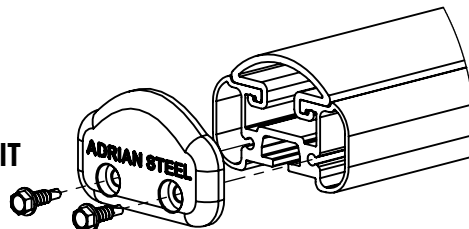
7R. ADD STEP LADDER KIT (Grip-Lock OR ProLift ONLY!)

8R. ASSEMBLE END CAPS TO CROSSBOW

USED FOR HD UTILITY &  
Grip-Lock RACKS

LOCATED IN CROSSBOW KIT

**FULLY TIGHTEN**  
**(2) FAS0473, 63851**  
**(2 PLACES PER END CAP)**  
**5/16" SOCKET**



USED FOR ProLift RACKS  
LOCATED IN ProLift Kit

