

PROMASTER CITY PARTITION



PRODUCT WEIGHT

51 LBS

WIDTH x DEPTH x HEIGHT

62.5" x 13.75" x 50"

CAPACITY

N/A

COLOR

BLACK

CATALOG NUMBER

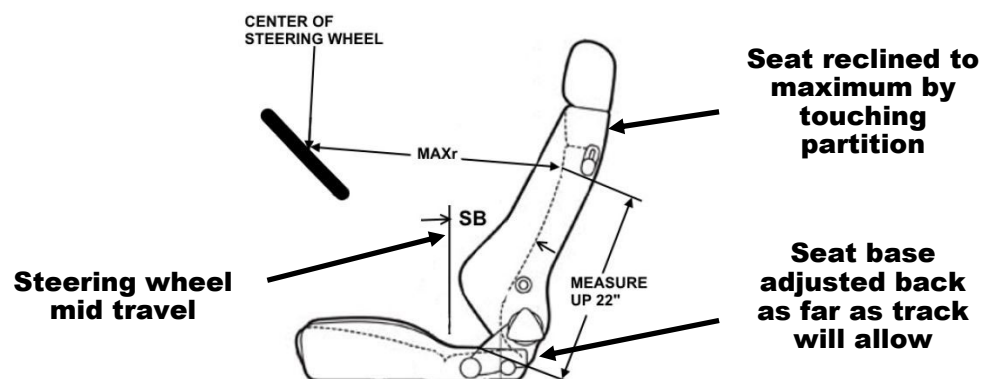
PARPMC

PRODUCT FEATURES

Composite partition for Promaster City provides a semi-sealed solution for separating the cab area from the cargo area. The composite partition features a full perimeter bulb seal that seals off the majority of the airflow from the cab area to the cargo area.

This feature provides better climate control for the cab area and reduces noise transfer from the cargo area to the cab area.

Driver Comfort Details



	DESCRIPTION	DIMENSION
SB	SEAT BACK ANGLE	15 degrees
MAXr	MAXIMUM DRIVER REACH	30"

SEE PAGE 2 FOR APPLICATION NOTES AND ACCESSORIES, OTHER PRODUCTS THAT WORK WITH THIS UNIT.

PAGE 1 of 2

The information contained in this document is the sole property of ADRIAN STEEL COMPANY. ADRIAN STEEL COMPANY retains the right to modify and/or change the product of its design at any time without prior notification.

Accessory Chart

	Cargo Side		Cab Side
	Base Partition BAGRKA1 REQUIRED (1 BAGRKA1 will allow for one accessory to be added)	PARHDW Fastener Kit Allow accessories to be added directly mounted to partition	None available
Available Accessories	-	-	-
PA7: Reflector kit	X	X	-
PA8: Fire ext.	X	X	-
PA9: First aid tray	X	X	-
PA10: Practice holder			-
PA11: Cab file			-
PA11NL: Catalog box			-
TA1: Four hook bar			-
TH30: 30lb tank holder			-
TH50: 50lb tank holder			-
UH50RM1: Rail mount kit			-
UH10: 1" hook			-
UH25: 2.5" hook			-
UH25CP-G: 2.5' hook comp			-
UH50: 5" hook	X		-

PARHDW Fastener Kit

Fastener kits allow for installation of smaller and lighter (up to 12 lbs.) Allows accessories to be directly mounted to the partition, such as: fire extinguisher, flare kit, first aid kits, acc.



Assembly/Installation Instructions and Owners Manual



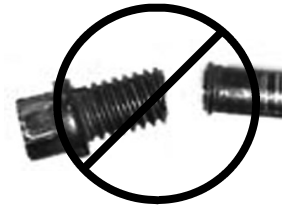
(PARPMC SHOWN)

COMPOSITE PARTITIONS **PARPMC & PARPMC-NW** FOR PMC VANS

- PRECAUTIONS -





 **CAUTION** 
**THE USE AIR IMPACT TOOLS CAN
OVER-TORQUE FASTENERS AND
CAUSE FASTENER FAILURE!**



 **CAUTION** 
**ALL INSTALLATION HOLES SHOULD BE SEALED
WITH SILICON OR BUTYL SEALANT TO PREVENT
EXHAUST FUMES FROM ENTERING THE VEHICLE!**



 **DANGER** 
**INSPECT FOR FUEL TANK, FUEL LINES, BRAKE LINES, HIGH
VOLTAGE BATTERIES AND ELECTRICAL LINES PRIOR TO
DRILLING TO AVOID DAMAGING CRITICAL VEHICLE SYSTEMS
OR INJURY TO INSTALLER DURING INSTALLATION PROCESS!**



 **CAUTION** 
**TO AVOID DAMAGING THE VEHICLE ALWAYS
USE DRILL STOPS WHEN DRILLING ANY IN-
STALLATION HOLES!**



- IMPORTANT WARRANTY REQUIREMENTS -

1. SUBSTITUTING ADRIAN STEEL SPECIFIED FASTENERS FOR ASSEMBLY AND/OR INSTALLATION WILL VOID YOUR PRODUCT WARRANTY.
2. ALL HOLES DRILLED INTO VEHICLE SHOULD HAVE THE RAW METAL EDGES SEALED WITH A SELF-ETCHING PRIMER TO RESIST CORROSION AND POTENTIAL FASTENER POINT FAILURE.
3. ALL FASTENERS USED IN THE INSTALLATION OF THIS PRODUCT SHOULD BE TIGHTENED TO THE TORQUE(S) SPECIFIED IN THESE INSTRUCTIONS.
4. THESE INSTRUCTIONS SHOULD BE KEPT WITH THE VEHICLE.

THE BASIC TOOLS NEEDED FOR MOST INSTALLATIONS



DRILL



DRILL BIT WITH
STOP



RATCHET, SOCKETS
AND/OR WRENCHES



SCREWDRIVERS





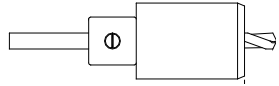
MEASURING TAPE

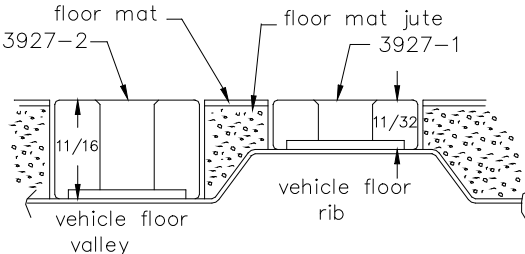
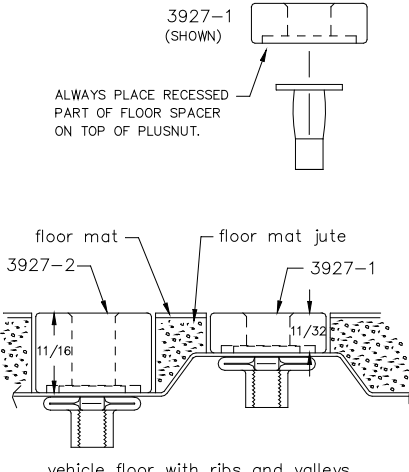
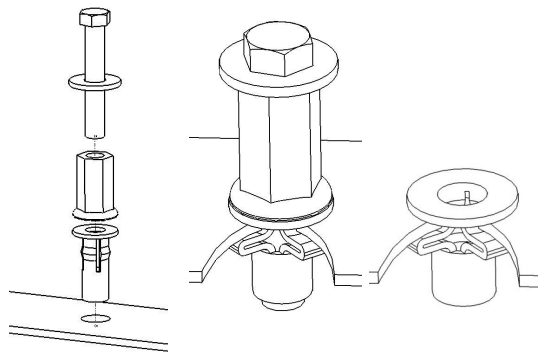
ADDITIONAL TOOLS MAY BE NEEDED FOR THIS INSTALLATION AND THEY WILL BE IDENTIFIED IN THE STEPS THAT FOLLOW.

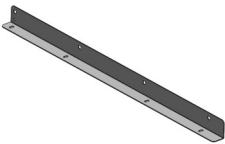





Assembly/Installation Instructions and Owners Manual



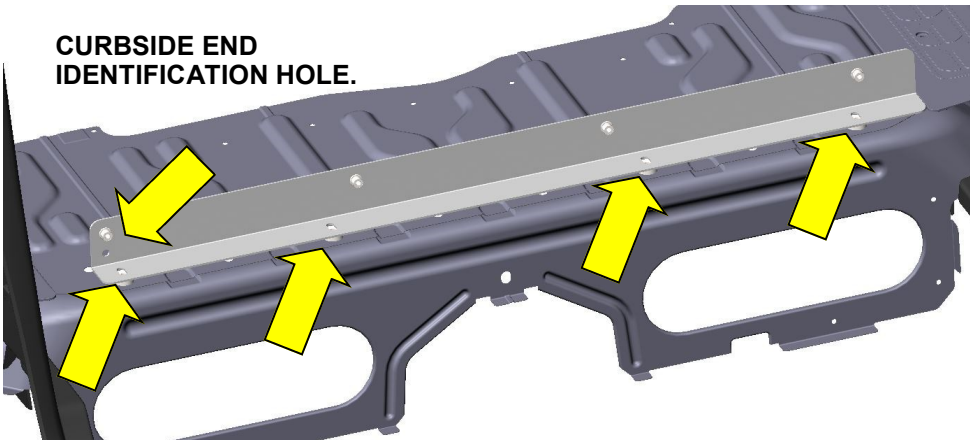
WHEN INSTALLING PLUSNUTS MAKE SURE YOU USE THE CORRECT DRILL BIT WITH A STOP!

PLUSNUT SIZE	DRILL BIT SIZE
1/4-20 PLUSNUT, FAS0052	USE A 3/8" DIAMETER DRILL BIT WITH A STOP.
5/16-18 PLUSNUT, FAS0091	USE A 1/2" DIAMETER DRILL BIT WITH A STOP.
 OR  NOTE: A PLUSNUT SETTING TOOL IS REQUIRED FOR PLUSNUT INSTALLATION AND IS NOT SUPPLIED WITH THIS KIT. ORDER PLUSNUT TOOLS FROM ADRIAN STEEL (P.N. 22200-0) OR USE AN AIR POWERED PLUSNUT SETTING GUN.	
NOTE: If your vehicle contains carpet or a rubber floor mat you will need to prepare the mounting locations using a 1-3/16" carpet cutter.	1-3/16" DIAMETER CARPET CUTTER P.N. 31183-0. 

	<p>Step 01</p> <p>Optional Based on Vehicle</p> <p>If your vehicle contains carpet or a rubber floor mat you will need to prepare the mounting locations. (if not, skip to STEP 02)</p> <p>Position the product to be installed into the vehicle and once you are satisfied with the mounting locations, mark the mounting locations. Using a 1-3/16" diameter carpet cutter. Select the appropriate floor spacers as shown in the illustration to the left. Set those aside for use later into the installation process.</p> <p>Once you have prepared the carpet/floor mat for mounting, proceed to STEP 02.</p>
	<p>Step 02</p> <p>Prepare Mounting Locations</p> <p>Using a drill and drill bit (see table at top of page for correct size) drill the mounting holes in the vehicle sheet metal to prepare for installing the plusnuts.</p> <p>If you are thru-bolting at any of the locations simply drill a hole that is 1/16" larger than the bolt size(s) for those locations.</p> <p>Once you have drilled the holes into the vehicle, the raw metal edges should be sealed using a self-etching primer to resist corrosion and potential fastener point failure.</p>
	<p>Step 03</p> <p>Setting Plusnuts</p> <p>Use an Air Powered Plusnut Setting Gun to "set the plusnut" or if installing manually with hand tools, assembly the following.</p> <p><u>1/4-20UNC Plusnut (FAS0052)</u></p> <p>FAS0080 SCREW, HXHD, 1/4-20UNCx2.00, G8</p> <p>FAS0067 WASHER, FLAT, 1/4"ID</p> <p>22200-0 PLUSNUT TOOL</p> <p><u>5/16-18UNC Plusnut (FAS0091)</u></p> <p>FAS0095 SCREW, HXHD, 5/16-18UNCx2.00", G8</p> <p>FAS0086 WASHER, FLAT, 5/16"ID</p> <p>22200-0 PLUSNUT TOOL</p> <p>Place barrel of the plusnut body in sheet metal thru hole until flange is flush with sheet metal.</p> <p>Using a 9/16" combination wrench of plusnut tool body and a second hand wrench, ratchet, or air tool, rotate the hex bolt head CW to draw plus nut flanges up (set the plusnut).</p> <p>Remove hex bolt, washer, and plusnut. Inspect installation.</p>

PARTS YOU WILL USE FOR STEP 04	52080-B, FOOTER RAIL (1) EACH	FAS00245, 5/16" FLAT WASHERS (4) EACH	03927-1 FLOOR SPACER (4) EACH	FAS0741, M8-1.25X30 SCREWS (4) EACH
				
	FAS0098, 5/16" LOCK WASHERS (4) EACH	DRILL/DRIVER WITH HEX BIT		
				

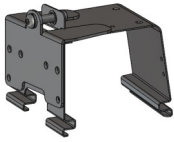
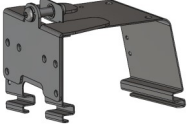

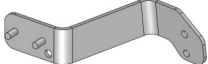




Instructions for Step 04



CURBSIDE END IDENTIFICATION HOLE.

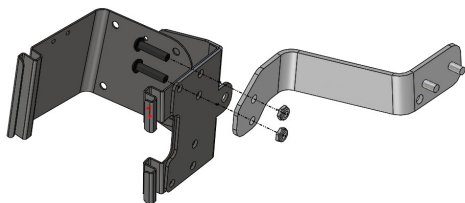
ATTACH THE FOOTER RAIL TO THE VEHICLE AS SHOWN.

PLACE THE FOUR (4) SHORT FLOOR SPACERS OVER THE PLUSNUTS. FASTEN THE FOOTER RAIL TO THE VEHICLE AS SHOWN USING THE 5/16" BOLTS, LOCKWASHERS AND FLAT WASHERS.

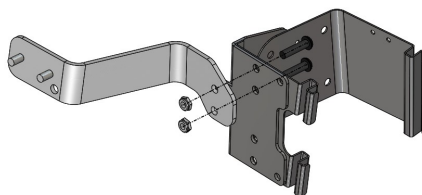
PARTS YOU WILL USE FOR STEP 05	52085-B, B-PILLAR CLAMP BRKT SS (1) EACH	52081-B, B-PILLAR CLAMP BRKT CS (1) EACH	52154-B, CHNL MTG BRKT ASSM,SS	52153-B,CHNL MTG BRKT ASSM,CS
				
	FAS0708, 5/16x1.25 BHCS (4) EACH	FAS0676 5/16 LT NYLOCK NUT (4) EACH	3/16" ALLEN WRENCH	DRILL/DRIVER AND 1/2" DEEP WELL SOCKET
				

Instructions for Step 05

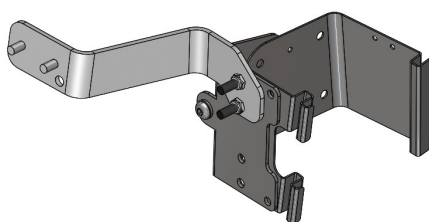
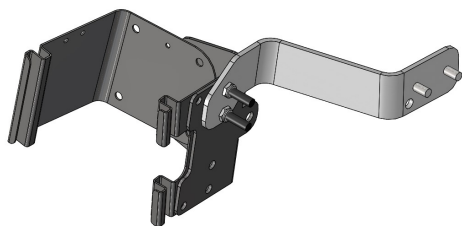
ASSEMBLE B-PILLAR BRACKETS AS SHOWN.



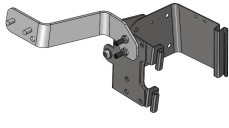

**STREETSIDE
BRACKET
ASSEMBLY**



**CURBSIDE
BRACKET
ASSEMBLY**

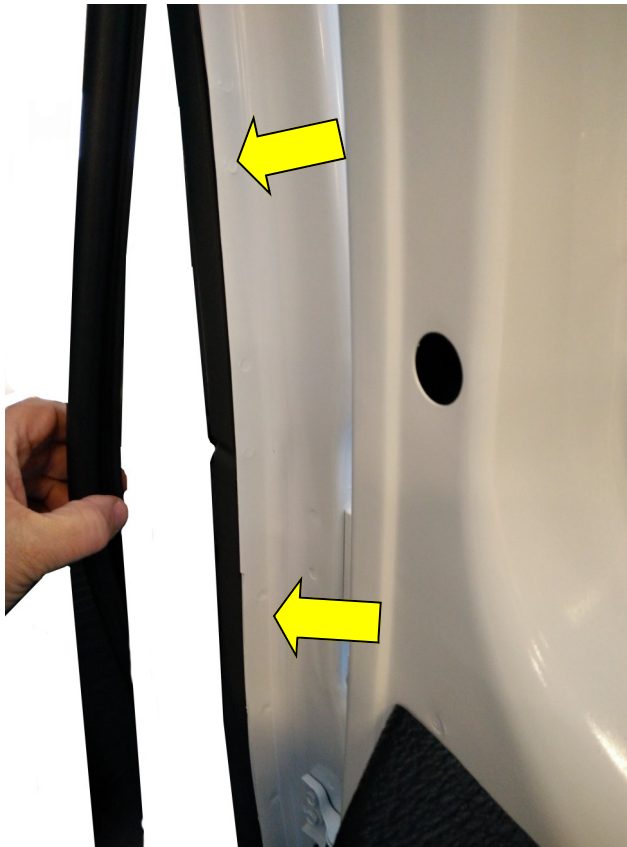


ATTACH THE JOINING BRACKETS TO THE B-PILLAR CLAMP BRACKETS AS SHOWN TO CREATE A CURBSIDE AND STREETSIDE ASSEMBLY OF EACH AS SHOWN USING THE ABOVE LISTED FASTENERS.

PARTS YOU WILL USE FOR STEP 06	SS MTG BRKT ASSEMBLY FROM PREVIOUS STEP	CS MTG BRKT ASSEMBLY FROM PREVIOUS STEP	DRILL/DRIVER	9/16" DEEPWELL SOCKET
				

Instructions for Step 06

PULL BACK DOOR SEALS AS SHOWN.



CAREFULLY PULL DOOR SEALS AWAY FROM THE B-PILLAR FLANGES NEAR THE MIDDLE OF THE OPENING(S) AS SHOWN TO EXPOSE B-PILLAR SHEET METAL FLANGES ON BOTH SIDES OF THE CURBSIDE B-PILLAR AND ON THE FRONT SIDE OF THE STREETSIDE B-PILLAR.

PARTS YOU WILL USE FOR STEP 07	SS MTG BRKT ASSEMBLY FROM PREVIOUS STEP	CS MTG BRKT ASSEMBLY FROM PREVIOUS STEP	DRILL/DRIVER	9/16" DEEPWELL SOCKET
				

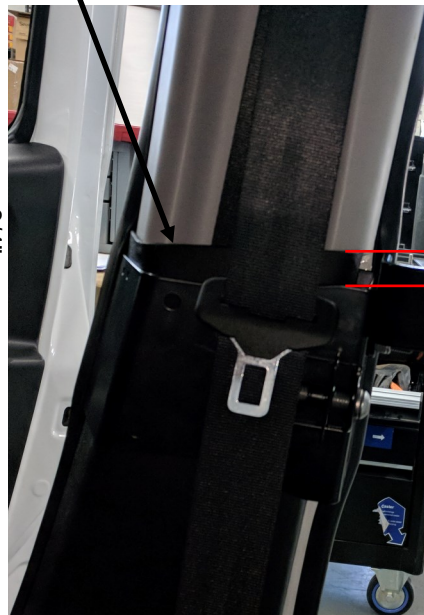
Instructions for Step 07

ATTACH B-PILLAR BRACKETS AS SHOWN.DO NOT OVER TIGHTEN. ONLY TIGHTEN THE BRACKETS ENOUGH TO KEEP BOTH FLANGES FULLY ENGAGED.

STREETSIDE BRACKET

CURBSIDE BRACKET

TRIM SEAM

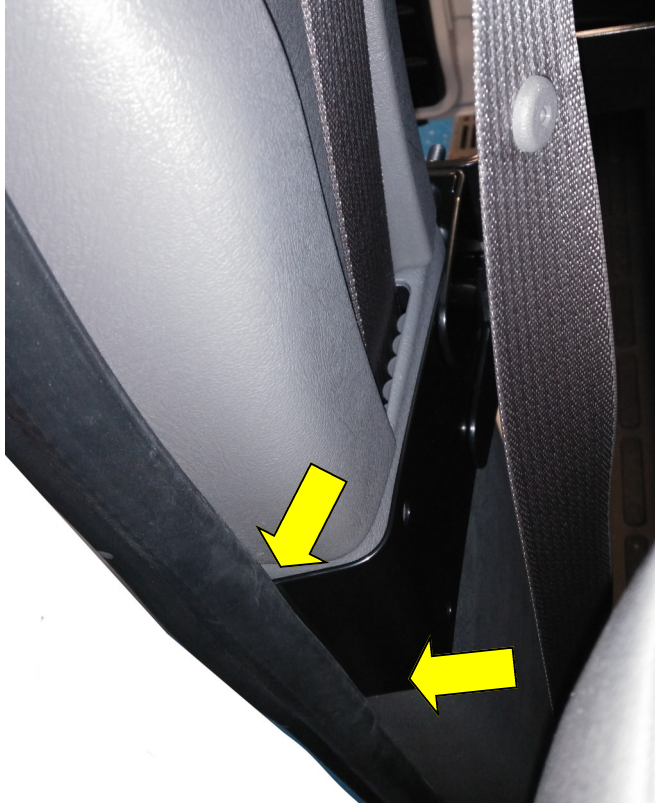


POSITION THE B-PILLAR BRACKETS SO THAT THE BRACKET PORTION WITH THE 5/16" STUDS IS TOWARDS THE TOP OF THE BRACKET AND THE STUDS ARE FACING REARWARD IN THE VEHICLE. THE HEMMED FLANGE OF THE BRACKETS SHOULD BE ATTACHED OVER THE B-PILLAR FLANGE SHEET METAL FLANGES. USE A RUBBER Mallet TO ENGAGE THE FLANGES. POSITION THE BRACKETS WITH THE TOP EDGE 3/4" BELOW THE PLASTIC B-PILLAR TRIM SEAM WHERE THE SEAT BELT EXITS THE TRIM. **ENSURE THE MTG BRKT IS BEHIND THE SEATBELT.** ONCE THE BRACKET(S) ARE IN POSITION, TIGHTEN THE NUTS ON THE CARRIAGE BOLT(S) TO TIGHTEN THE CLAMP BRACKETS TO THE B-PILLARS.

PARTS YOU WILL USE FOR STEP 08	OEM DOOR SEALS			



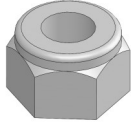


Instructions for Step 08

RE-ATTACH DOOR SEALS.



RE-ATTACH DOOR SEALS ONTO THE B-PILLAR FLANGES AND OVER THE B-PILLAR BRACKET HEMMED EDGES.

MAKE SURE THAT THE INSIDE EDGE OF THE DOOR SEALS ARE PROPERLY SEATED OVER THE B-PILLAR BRACKETS AND THAT THE SEAL EDGES ARE NOT CURLED UNDER.

PARTS YOU WILL USE FOR STEP 09	50755-B CROSS CHANNEL (1) EACH	FAS0245 5/16" FLAT WASHER (4) EACH	FAS0248 5/16" LOCKNUT (4) EACH	DRILL/DRIVER
				
	1/2" SOCKET			
				

Instructions for Step 09

ATTACH CROSS CHANNEL AS SHOWN.



STREETSIDE ATTACHMENT



CURBSIDE ATTACHMENT

IN ORDER TO ENGAGE THE STUDS TO THE SLOTS IN THE CHANNEL, APPLY REARWARD PRESSURE TO THE CURBSIDE MOUNTING BRACKET TO ALLOW THE STUDS TO ENGAGE THE TWO SLOTS.

ATTACH CROSS CHANNEL ASSEMBLY TO B-PILLAR MOUNTING BRACKETS. POSITION CROSS CHANNEL WITH RIV-NUTS IN THE CHANNEL FACING TOWARDS THE REAR OF THE VEHICLE AS SHOWN. START ON THE STREETSIDE AND POSITION THE MOUNTING HOLES TO BE OVER THE BRACKET STUDS AS SHOWN AND THEN POSITION THE OPPOSITE END OVER THE CURBSIDE BRACKET STUDS.

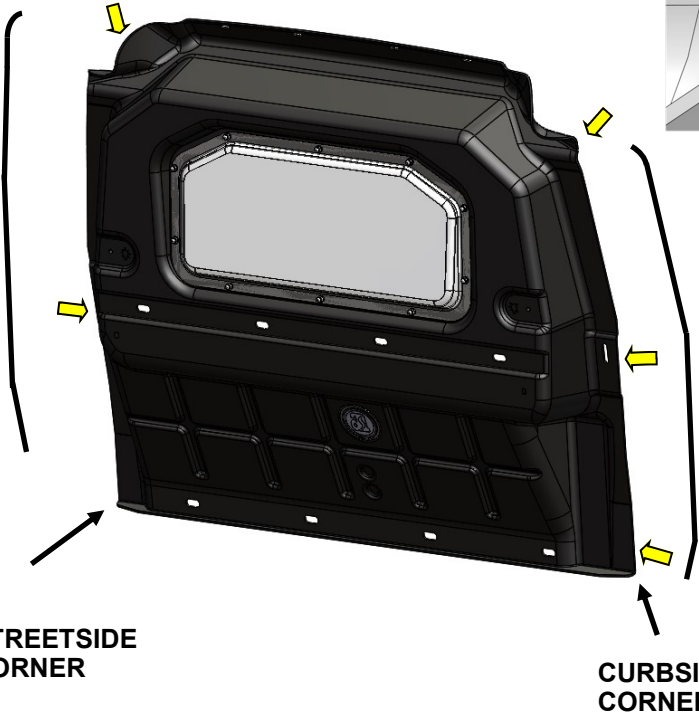
PLACE FLAT WASHERS AND THE NYLOCK NUTS ON THE STREETSIDE AND TIGHTEN.

PLACE FLAT WASHERS AND THE NYLOCK NUTS ON THE CURBSIDE AND TIGHTEN.


PARTS YOU WILL USE FOR STEP 10	52076 PARTITION PANEL ASSM.,	52077 PARTITION PANEL ASSM. W/WINDOW,	50770 BULB SEAL, PARPMC (2) EACH	
		OR 		
	SMALL RUBBER MAL- LET			
				

Instructions for Step 10

ATTACH BULB SEALS TO PARTITION AS SHOWN.



ATTACH 51255 SEALS TO BOTH SIDES OF THE PARTITION PANEL STARTING AT THE BOTTOM CORNER AND WORKING UP OVER TO THE TURN AREA AT EACH UPPER CORNER.

PARTS YOU WILL USE FOR STEP 11	VEHICLE			
				

Instructions for Step 11

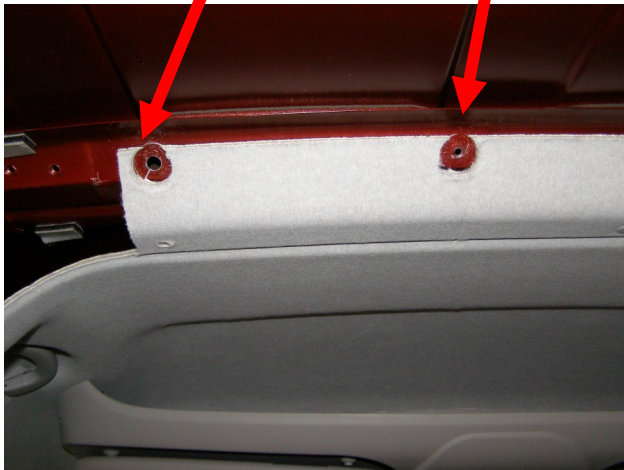



REMOVE OEM PLASTIC TRIM FROM BOTH SIDES OF THE INTERIOR

PARTS YOU WILL USE FOR STEP 12	DRILL/DRIVER	1-1/4" HOLE SAW W/ 3/8" DIAMETER DRILL	FAS0052 1/4" PLUSNUT (2) EACH	
				

EXISTING HOLE LOCATION
CUT LINER WITH HOLE SAW
3/8 DIA THRU WITH DRILL
STOP (2) PLACES
FAS0052—1/4" PLUSNUT

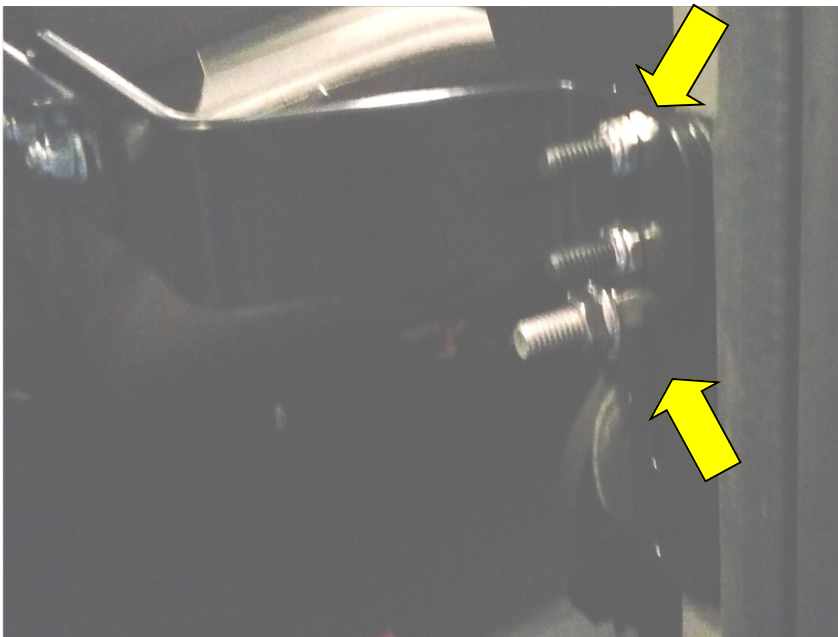
OEM THREADED INSERT
CUT LINER WITH HOLE SAW
WITHOUT DRILL
(2) PLACES



PARTS YOU WILL USE FOR STEP 13	51248-B MTG. PLATE, PARGM (2) EACH			
				



Instructions for Step 13

INSTALL MOUNTING PLATES.



INSTALL A MOUNTING PLATE ON BOTH B-PILLAR BRACKETS.

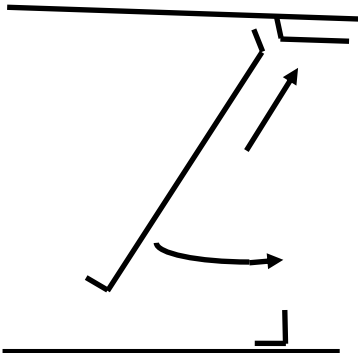
PLACE MOUNTING PLATE OVER THE TWO FASTENER STUDS ON BOTH OF THE B-PILLAR BRACKETS ON THE REARWARD SIDE OF THE BRACKET AS SHOWN.

PARTS YOU WILL USE FOR STEP 14	PARTITION PANEL ASSEMBLIES WITH BULB SEALS INSTALLED			
		OR		




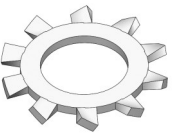



Instructions for Step 14

INSERT PARTITION PANEL INTO VEHICLE.

INSERT TOP FIRST THEN PIVOT FORWARD AND INTO PLACE AGAINST FOOTER.



INSERT PARTITION INTO VEHICLE WITH BOTTOM EDGE WAY FROM THE FOOTER WITH THE TOP CONTACTING THE HEADER AREA FIRST AND THEN PIVOT UP AND FORWARD INTO PLACE AGAINST B-PILLARS AND FOOTER.

PARTS YOU WILL USE FOR STEP 15	50766-B RAIL AD, PARTC	36496-0 END CAP (2) EACH	FAS0708 BHCS 5/16X1-1/4 (4) EACH	FAS0085 5/16 LOCK WASHER (4) EACH
				
	DRILL/DRIVER	3/16" HEX DRIVER BIT	SMALL RUBBER Mallet	
				

Instructions for Step 15

ATTACH AD RAIL TO PARTITION AS SHOWN.



INSERT A PLASTIC END CAP INTO EACH END OF THE AD RAIL AS SHOWN

ATTACH THE AD RAIL AND PARTITION PANEL TO THE CROSS CHANNEL USING THE ABOVE LISTED 5/16" FASTENERS AT FOUR (4) PLACES AS SHOWN.

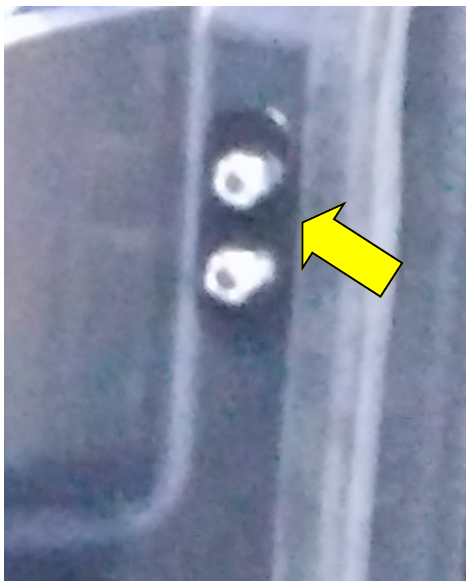
NOTE: DO NOT FULLY TIGHTEN THESE FOUR (4) FASTENERS AT THIS STEP!

ADJUSTMENTS MAY BE NEEDED DURING THE NEXT STEP!

PARTS YOU WILL USE FOR STEP 16	51248-B MTG. PLATE, PARGM (2) EACH	FAS0676 5/16 LT NYLOCK NUT (4) EACH	DRILL/DRIVER	1/2" SOCKET
				

Instructions for Step 16

ATTACH MOUNTING PLATES AS SHOWN.



INSTALL A MOUNTING PLATE ON BOTH B-PILLAR BRACKETS.

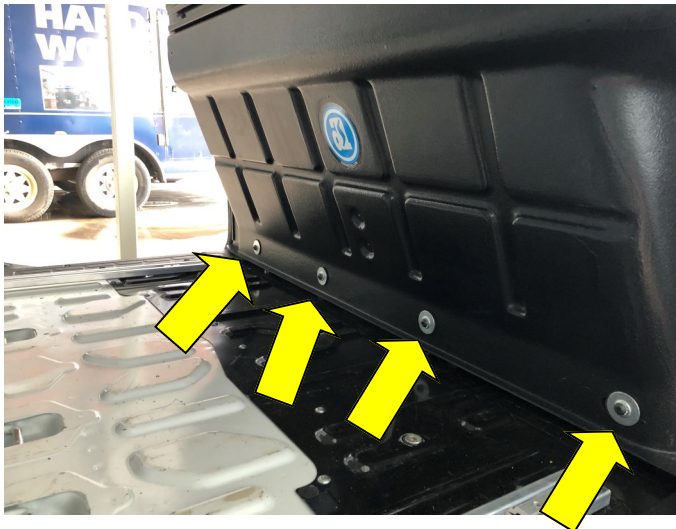
PLACE MOUNTING PLATE OVER THE TWO FASTENER STUDS ON BOTH OF THE B-PILLAR BRACKETS AND AGAINST THE PARTITION PANEL SURFACE.

INSTALL TWO (2) 5/16" NY-LOCK NUTS ON BOTH CURSIDE AND STREETSIDE AND FULLY TIGHTEN.

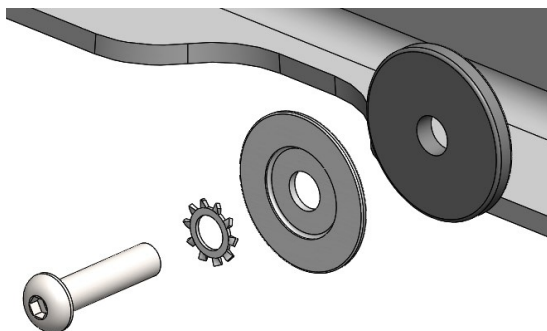
PARTS YOU WILL USE FOR STEP 17	FAS0708 BHCS 5/16X1-1/4 (4) EACH	FAS0085 5/16 LOCK WASHER (4) EACH	FAS0833 WASHER, CUP (4) EACH	FAS0253 WASHER, IV-2 (4) EACH
				
	DRILL/DRIVER	3/16" HEX DRIVER BIT		
				

Instructions for Step 17

ATTACH PARTITION PANEL AS SHOWN.



ATTACH THE PARTITION PANEL TO THE PARTITION FOOTER USING THE ABOVE LISTED 5/16" FASTENERS AT FIVE (5) PLACES AS SHOWN. FULLY TIGHTEN THESE FOUR (4) FASTENERS.




PARTS YOU WILL USE FOR STEP 18	DRILL/DRIVER	3/16" HEX DRIVER BIT		
				

Instructions for Step 18

TIGHTEN AD RAIL FASTENERS.



FULLY TIGHTEN THE FOUR (4) FASTENERS THAT ATTACH THE AD RAIL.

PARTS YOU WILL USE FOR STEP 19	FAS0786 BHCS 1/4-20X1.25 (2) EACH	FAS0066 LOCK WASHER (4) EACH	FAS0833 WASHER, CUP (4) EACH	FAS0253 WASHER, IV-2 (4) EACH
				
	FAS0234 FLAT WASHER (2) EACH	FAS0733 BHCS M6-1.0X25 (2) EACH	DRILL/DRIVER	3/16" HEX DRIVER BIT
				

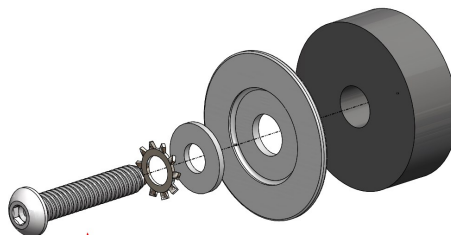
Instructions for Step 19

SECURE PANEL TO HEADER BRACKET.



FAS0786

FAS0733



ATTACH THE PARTITION PANEL TO THE HEADER USING THE ABOVE LISTED FASTENERS AND FULLY TIGHTEN.

USE FAS0733 FOR THE TWO INSIDE MOUNTING LOCATIONS. USE FAS0786 FOR THE TWO OUT SIDE MOUNTING LOCATIONS.

PARTS YOU WILL USE FOR STEP 20	PARHDW OPTIONAL KIT	DRILL/DRIVER	7/16" SOCKET	
				

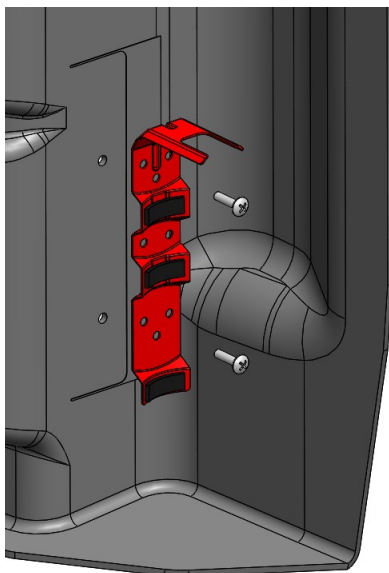
Instructions for Step 20 Supplemental

NOTE:

IT IS ACCEPTABLE TO INSTALL ACCESSORIES THAT WEIGH LESS THAN 15 POUNDS DIRECTLY TO THE CARGO-SIDE OF THE PARTITION PANEL.

YOU MUST ORDER HARDWARE KIT(S) PARHDW FOR THE CORRECT FASTENERS

FIRE EXTINGUISHER SHOWN FOR EXAMPLE.



DETERMINE MOUNTING POSITION FOR ACCESSORY AND MARK HOLE LOCATION(S). DRILL 5/16" DIAMETER HOLES THRU PARTITION PANEL. USE 1/4" TRUSS HEAD SCREWS THRU THE ACCESSORY WITH CUP WASHERS FROM THE CAB SIDE OF THE PARTITION AND USE NYLOCK FLANGE NUTS TO SECURE ACCESSORY.

NOTE:

FOR MOUNTING ACCESSORIES TO THE CAB SIDE OF THE PARTITION PANEL THE MOUNTING RAILS INCLUDED WITH THE PARTITION SHOULD BE USED. ADDITIONAL RAILS CAN BE ORDERED WITH PARG-MCAB MOUNTING KIT.

FOR MOUNTING HEAVIER AND/OR BULKY ACCESSORIES TO THE CARGO SIDE OF THE PARTITION THE ACCESSORY MOUNTING KIT PARGMCRG SHOULD BE ORDERED AND INSTALLED.

YOUR INSTALLATION IS NOW COMPLETED.