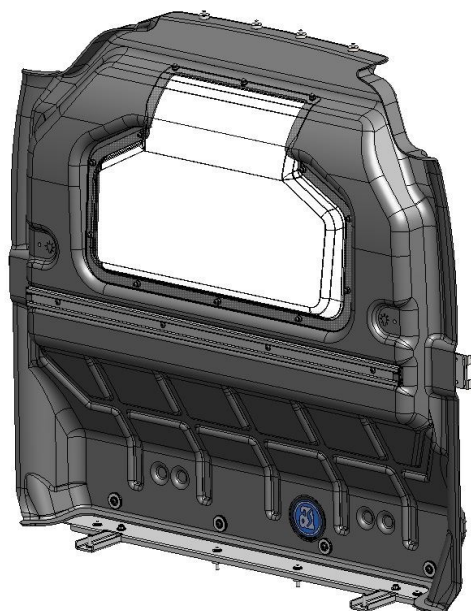


## NISSAN NV200 PARTITION



PRODUCT WEIGHT

**75 LBS**

WIDTH x DEPTH x HEIGHT

**55" x 11" x 51"**

CAPACITY

**N/A**

COLOR

**BLACK**

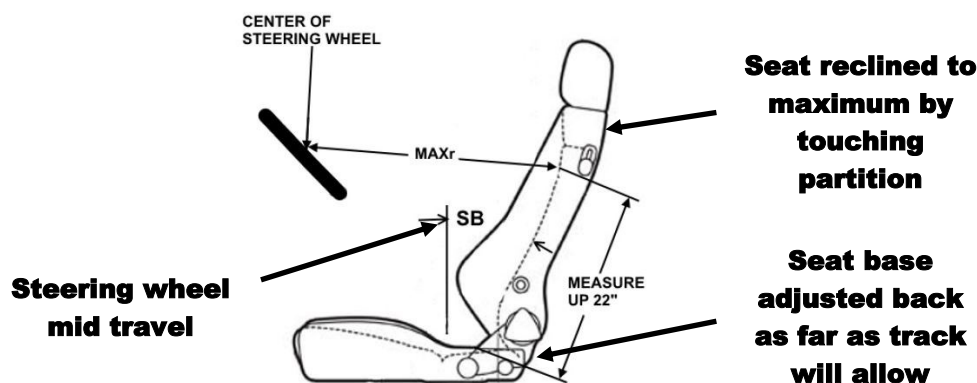
CATALOG NUMBER

**PARNV2**

### PRODUCT FEATURES

Composite partition for Nissan NV200 provides a semi-sealed solution for separating the cab area from the cargo area. The composite partition features a full perimeter bulb seal that seals off the majority of the airflow from the cab area to the cargo area. This feature provides better climate control for the cab area and reduces noise transfer from the cargo area to the cab area.

### Driver Comfort Details



	DESCRIPTION	DIMENSION
SB	SEAT BACK ANGLE	<b>29 degrees</b>
MAXr	MAXIMUM DRIVER REACH	<b>31"</b>

SEE PAGE 2 FOR APPLICATION NOTES AND ACCESSORIES, OTHER PRODUCTS THAT WORK WITH THIS UNIT.

PAGE 1 of 2

The information contained in this document is the sole property of ADRIAN STEEL COMPANY. ADRIAN STEEL COMPANY retains the right to modify and/or change the product of its design at any time without prior notification.

## Accessory Chart

	Cargo Side		Cab Side
	<b>Base Partition</b> BAGRKA1 REQUIRED (1 BAGRKA1 will allow for one accessory to be added)	<b>PARHDW Fastener Kit</b> Allow accessories to be added directly mounted to partition	None available
<b>Available Accessories</b>	-	-	-
PA7: Reflector kit	X	X	-
PA8: Fire ext.	X	X	-
PA9: First aid tray	X	X	-
PA10: Practice holder			-
PA11: Cab file			-
PA11NL: Catalog box			-
TA1: Four hook bar			-
TH30: 30lb tank holder			-
TH50: 50lb tank holder			-
UH50RM1: Rail mount kit			-
UH10: 1" hook			-
UH25: 2.5" hook			-
UH25CP-G: 2.5' hook comp			-
UH50: 5" hook	X		-

### PARHDW Fastener Kit

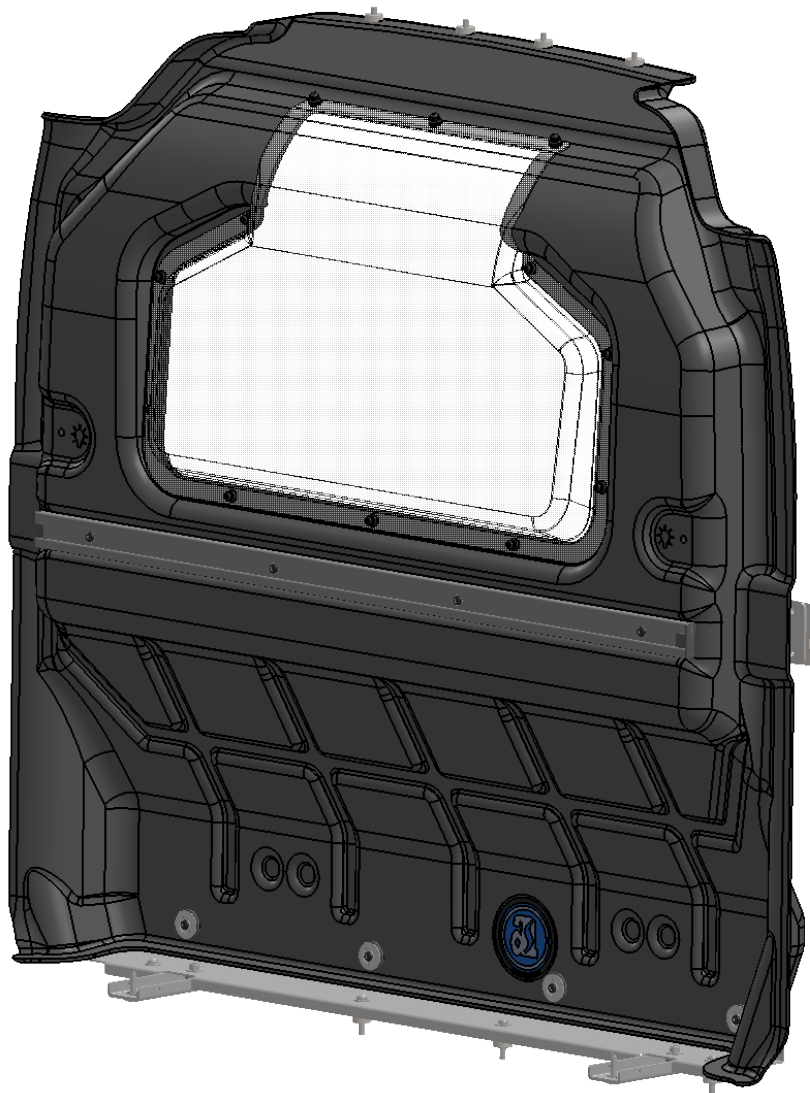
Fastener kits allow for installation of smaller and lighter (up to 12 lbs.) Allows accessories to be directly mounted to the partition, such as: fire extinguisher, flare kit, first aid kits, acc.

**Introduction / Comments:**

Composite partition for Nissan NV200 provides a semi-sealed solution for separating the cab area from the cargo area. The composite partition features a semi-full perimeter bulb seal that seals off the majority of the airflow from the cab area to the cargo area. This feature provides better climate control for the cab area and reduces noise transfer from the cargo area to the cab area.

**Note:**

It is advised that all fasteners used in this assembly and installation should be checked for tightness at the following intervals: @ 2-weeks and again @ 6-weeks of operation. This preventive maintenance step must be completed to ensure your product gives you long service life.



**COMP PAR, W/WDO, NV2  
PARNV2 & PARNV2-NW**

ADRIAN STEEL COMPANY • WWW.ADRIANSTEEL.COM • 906 JAMES STREET • ADRIAN, MI 49221 • 800-677-2726

## - PRECAUTIONS -



CAUTION



THE USE OF AIR IMPACT TOOLS CAN OVER-TORQUE FASTENERS AND CAUSE FASTENER FAILURE!



CAUTION



ALL INSTALLATION HOLES SHOULD BE SEALED WITH SILICON OR BUTYL SEALANT TO PREVENT EXHAUST FUMES FROM ENTERING THE VEHICLE!



DANGER



INSPECT FOR FUEL TANK, FUEL LINES, BRAKE LINES, HIGH VOLTAGE BATTERIES AND ELECTRICAL LINES PRIOR TO DRILLING TO AVOID DAMAGING CRITICAL VEHICLE SYSTEMS OR INJURY TO INSTALLER DURING INSTALLATION PROCESS!



CAUTION



TO AVOID DAMAGING THE VEHICLE ALWAYS USE DRILL STOPS WHEN DRILLING ANY INSTALLATION HOLES!  
ADRIAN AVAILABLE PART #'S 31119-0 (3/8" X 1/2" DEEP), 31121-0 (1/2" x 1/2" DEEP)



## - IMPORTANT WARRANTY REQUIREMENTS -

1. SUBSTITUTING ADRIAN STEEL SPECIFIED FASTENERS FOR ASSEMBLY AND/OR INSTALLATION WILL VOID YOUR PRODUCT WARRANTY.
2. ALL HOLES DRILLED INTO VEHICLE SHOULD HAVE THE RAW METAL EDGES SEALED WITH A SELF- ETCHING PRIMER TO RESIST CORROSION AND POTENTIAL FASTENER POINT FAILURE.
3. ALL FASTENERS USED IN THE INSTALLATION OF THIS PRODUCT SHOULD BE TIGHTENED TO THE TORQUE(S) SPECIFIED IN THESE INSTRUCTIONS.
4. THESE INSTRUCTIONS SHOULD BE KEPT WITH THE VEHICLE.

### THE BASIC TOOLS NEEDED FOR MOST INSTALLATIONS



DRILL



DRILL BIT WITH STOP



RATCHET, SOCKETS AND/OR WRENCHES



MEASURING TAPE



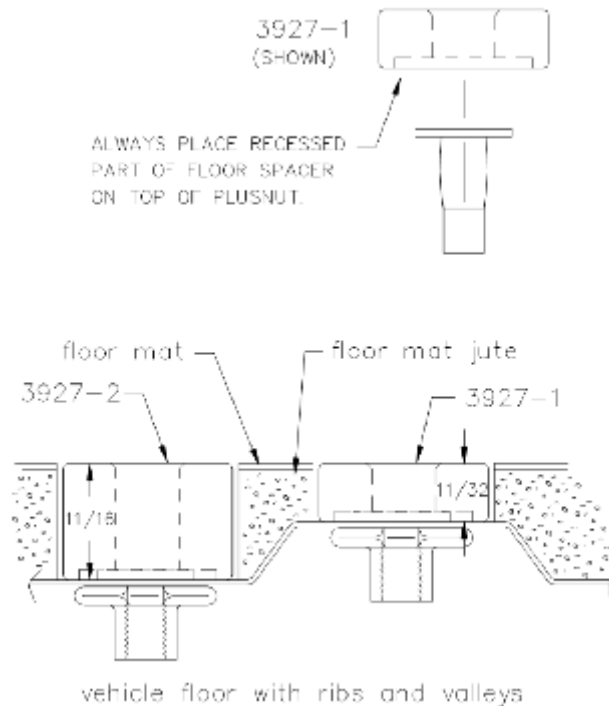
SCREWDRIVERS

ADDITIONAL TOOLS MAY BE NEEDED FOR THIS INSTALLATION AND THEY WILL BE IDENTIFIED IN THE STEPS THAT FOLLOW.

ADRIAN STEEL COMPANY • WWW.ADRIANSTEEL.COM • 906 JAMES STREET • ADRIAN, MI 49221 • 800-677-2726



If your vehicle contains carpet or a rubber floor mat you will need to prepare the mounting location. Position the product to be installed into the vehicle and once you are satisfied with the mounting locations, mark the mounting locations. Using a 1-3/16" diameter carpet cutter (P/N: 31183-0). Select the appropriate floor spacers as shown in the illustration. Set those aside for use later into the installation process. Using the correct drill bit size for the selected plusnut, drill the mounting holes in the vehicle sheet metal to prepare for installing the plusnuts. If you are thru-bolting at any of the locations simply drill a hole that is 1/16" larger than the bolt size(s) for those locations. Once you have drilled the holes into the vehicle, the raw metal edges should be sealed using a self-etching primer to resist corrosion and potential fastener point failure.



A PLUSNUT (RIVNUT) SETTING TOOL IS REQUIRED FOR PLUSNUT (RIVNUT) INSTALLATION. PLUS NUT SETTING TOOL CAN BE ORDERED THROUGH ADRIAN STEEL, OR USE AN AIR POWERED PLUSNUT SETTING GUN.

1/4-20UNC Plusnut (FAS0052) Use 3/8" dia. drill w/stop

FAS0080 SCREW, HXHD, 1/4-20UNCx2.00", G8

FAS0067 WASHER, FLAT, 1/4"ID

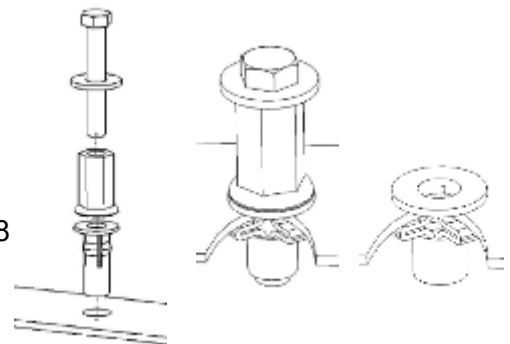
22200-0 PLUSNUT TOOL

5/16-18UNC Plusnut (FAS0091) Use 1/2" dia. drill w/stop

FAS0095 SCREW, HXHD, 5/16-18UNCx2.00", G8

FAS0086 WASHER, FLAT, 5/16"ID

22200-0 PLUSNUT TOOL

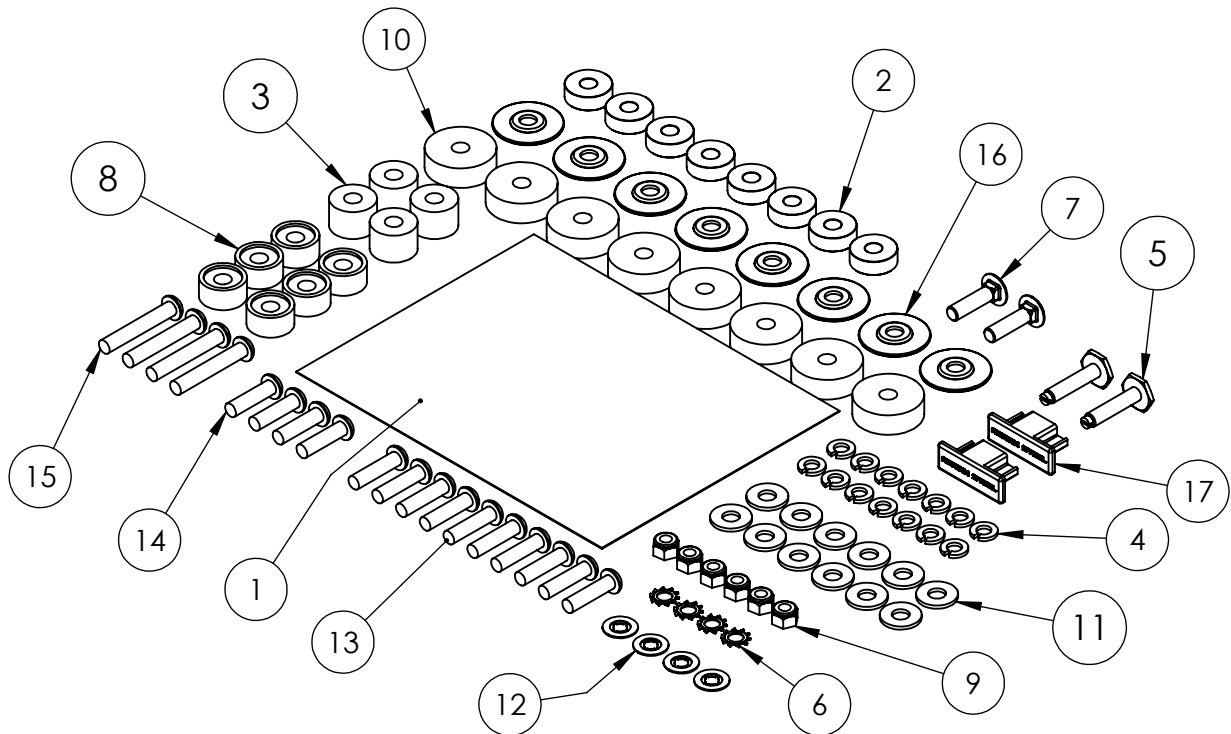


Place barrel of the plusnut body in sheet metal thru hole until flange is flush with sheet metal.

Using a 9/16" combination wrench of plusnut tool body and a second hand wrench, ratchet, or air tool, rotate the hex bolt head CW to draw plus nut flanges up (set the plusnut).

**Installation and / or Assembly Fasteners**  
**BAGPARNV**

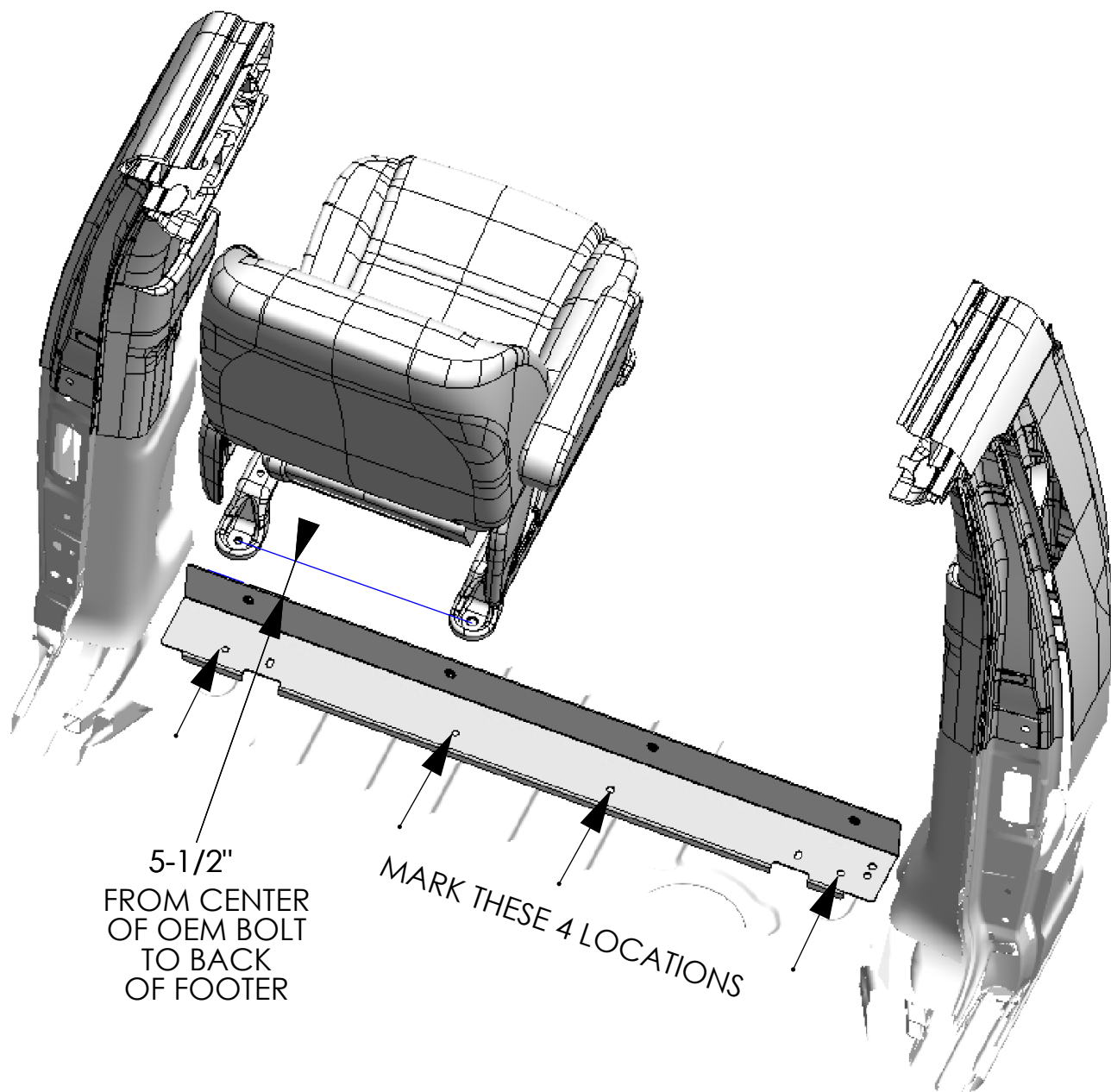
ITEM NO.	PART NUMBER	DESCRIPTION	QTY.
1	BAG0709-A	7" x 9" 3MIL AUTOBAG	1
2	03927-1	Floor Spacer Short	8
3	03927-2	Tall Floor Spacer	4
4	FAS0588	Washer, Lock, Split, 5/16, SS	14
5	FAS0705	Leveling Leg	2
6	FAS0085	Washer, Lock, Ext. Tooth, 5/16	4
7	FAS0812	Bolt, Carriage 5/16-18x1.25 SS	2
8	FAS0831	1/2" SHORT SPACER	6
9	FAS0248	Nut, Nylon Insert Lock, 5/16-18 SST	6
10	FAS0253	WASHER, FOAM RUBBER, 1.50X0.375X0.5	8
11	FAS0552	Washer, Flat, 5/16, SST	12
12	FAS0557	WASHER, RET 5/16, NY	4
13	FAS0708	Screw, Button Hd Hex Soc, 5/16-18X1.25, BLK OXIDE	10
14	FAS0741	Screw, Button Hd Hex Soc, M8-1.25 X 30	4
15	FAS0742	Screw, Button Hd Hex Soc, M8-1.25 X 50	4
16	FAS0833	WASHER, CUP FLANGED 1.5"	8
17	36496-0	END CAP	2



ADRIAN STEEL COMPANY • WWW.ADRIANSTEEL.COM • 906 JAMES STREET • ADRIAN, MI 49221 • 800-677-2726

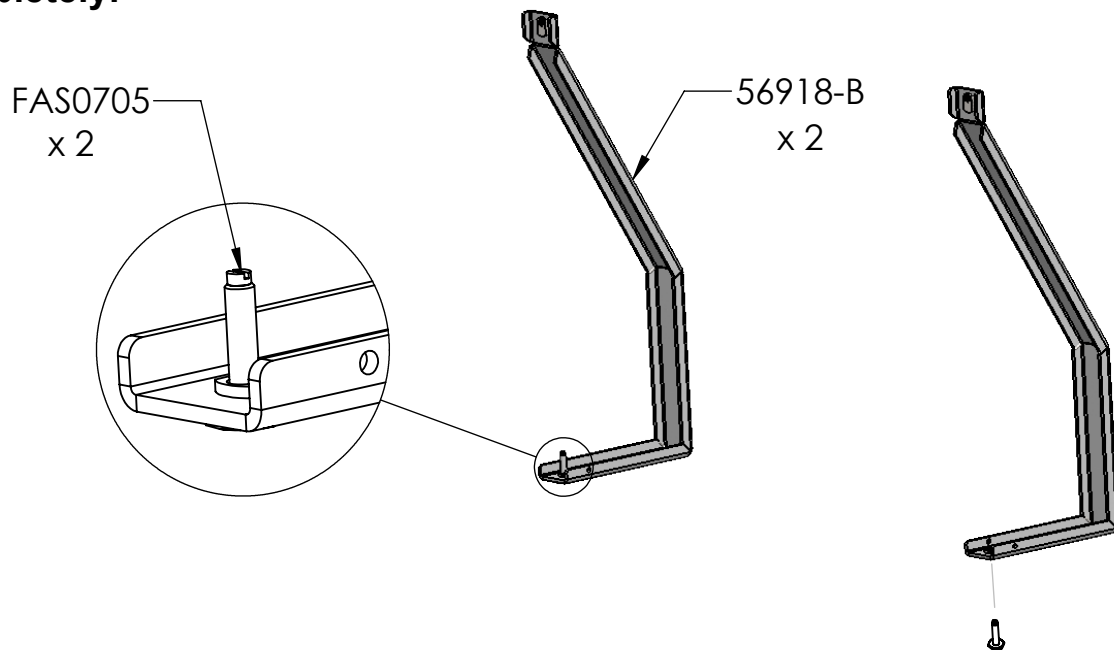
## Step 01

If your vehicle contains carpet or a rubber floor mat. Place footer rail in place shown and mark four (4) hole locations. Use a 1-3/16" hole saw (part # 31183-0) at the marked locations. Cut through the floor mat, but NOT the floor. (Or use previously validated drill jig)



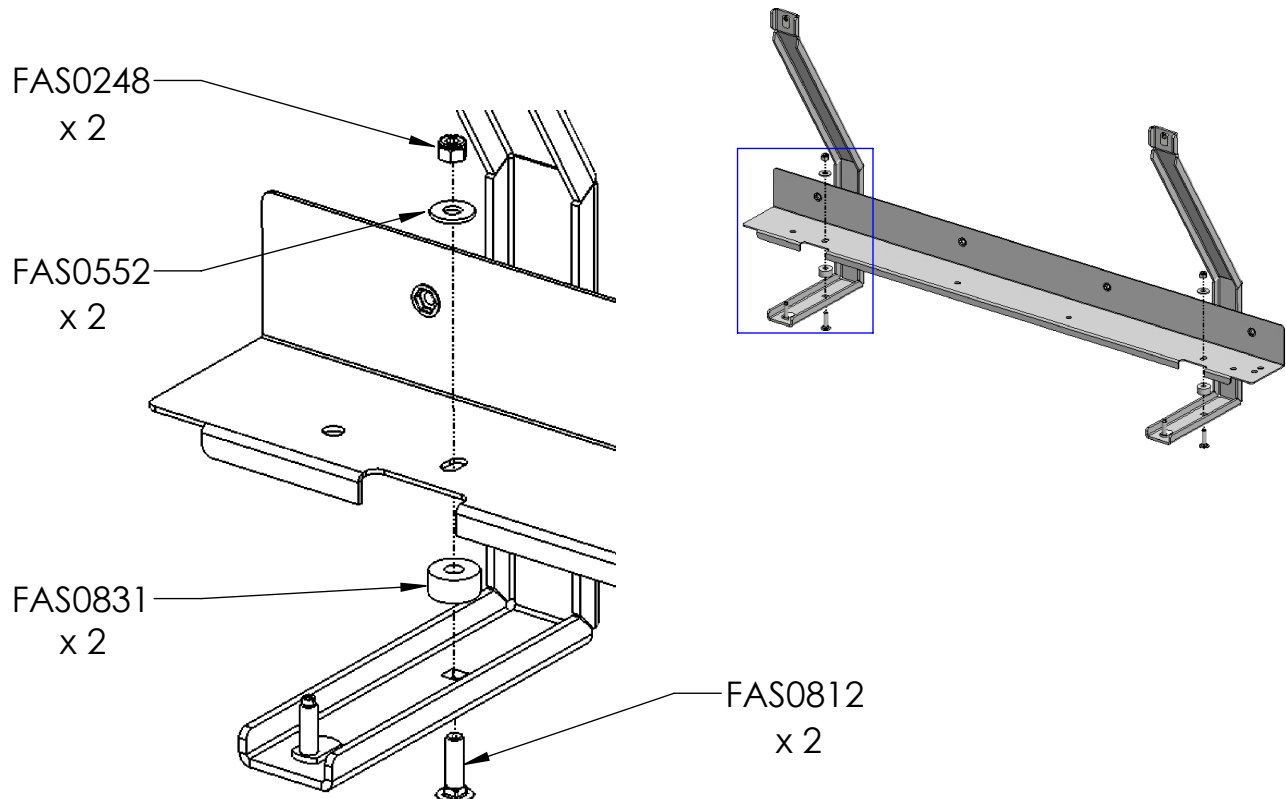
## Step 02

**Screw in leveling bolt into both leg supports as shown. Tighten completely.**



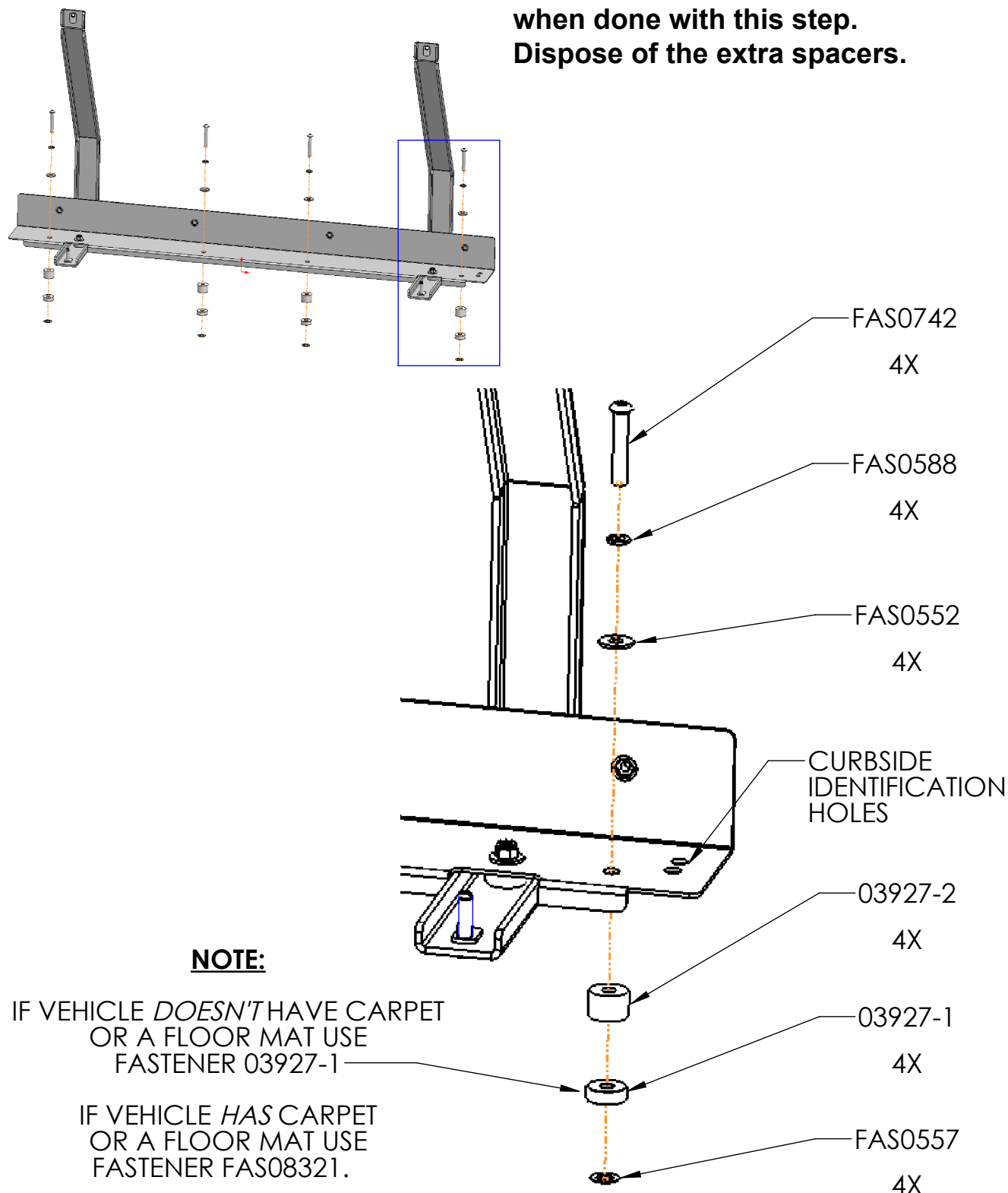
## Step 03

**Assemble leg supports to footer as shown.**



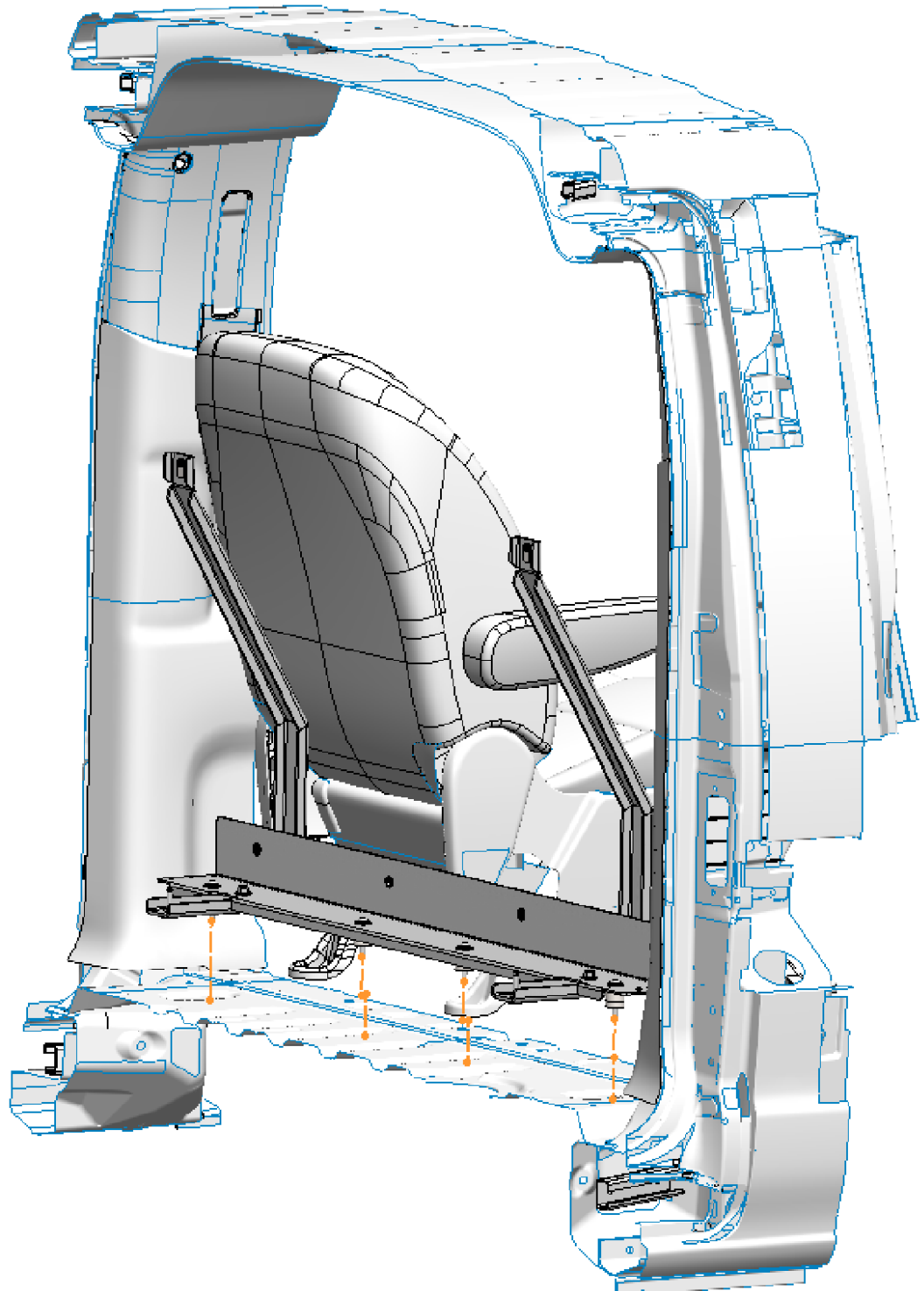
## Step 04

**Assemble fasteners shown to footer assembly. Make sure fasteners are held in place with retaining washers. There should be 4 extra spacers when done with this step. Dispose of the extra spacers.**



**Step 05**

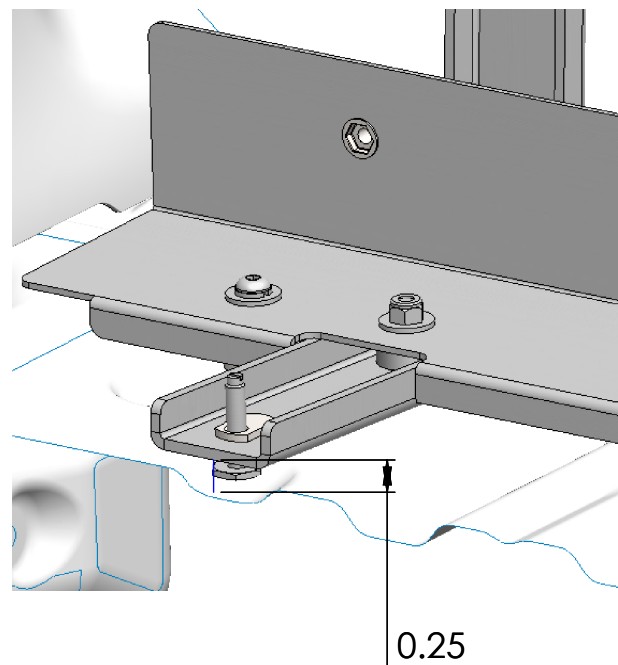
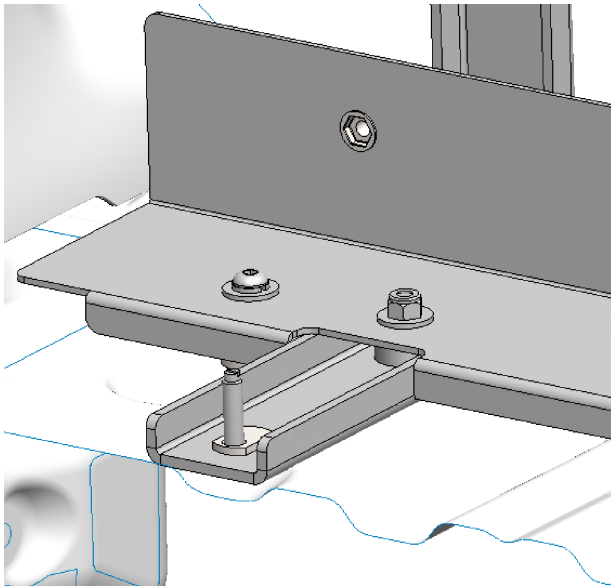
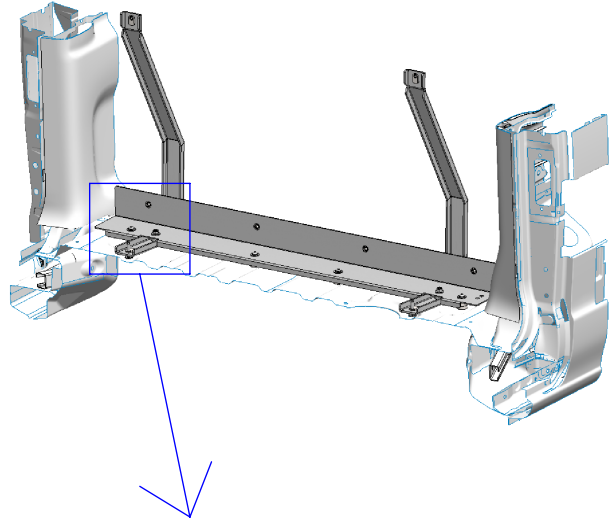
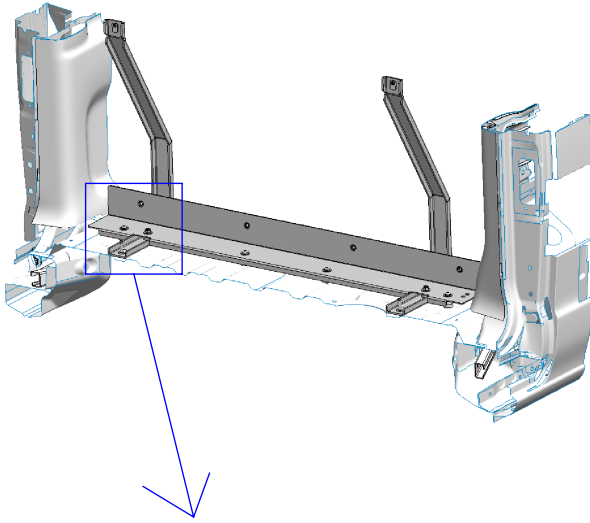
**Install the footer rail assembly to the vehicle as shown. Place over 4 OEM holes and fasten to the vehicle. Make sure the retaining washers are holding all fasteners in place.**





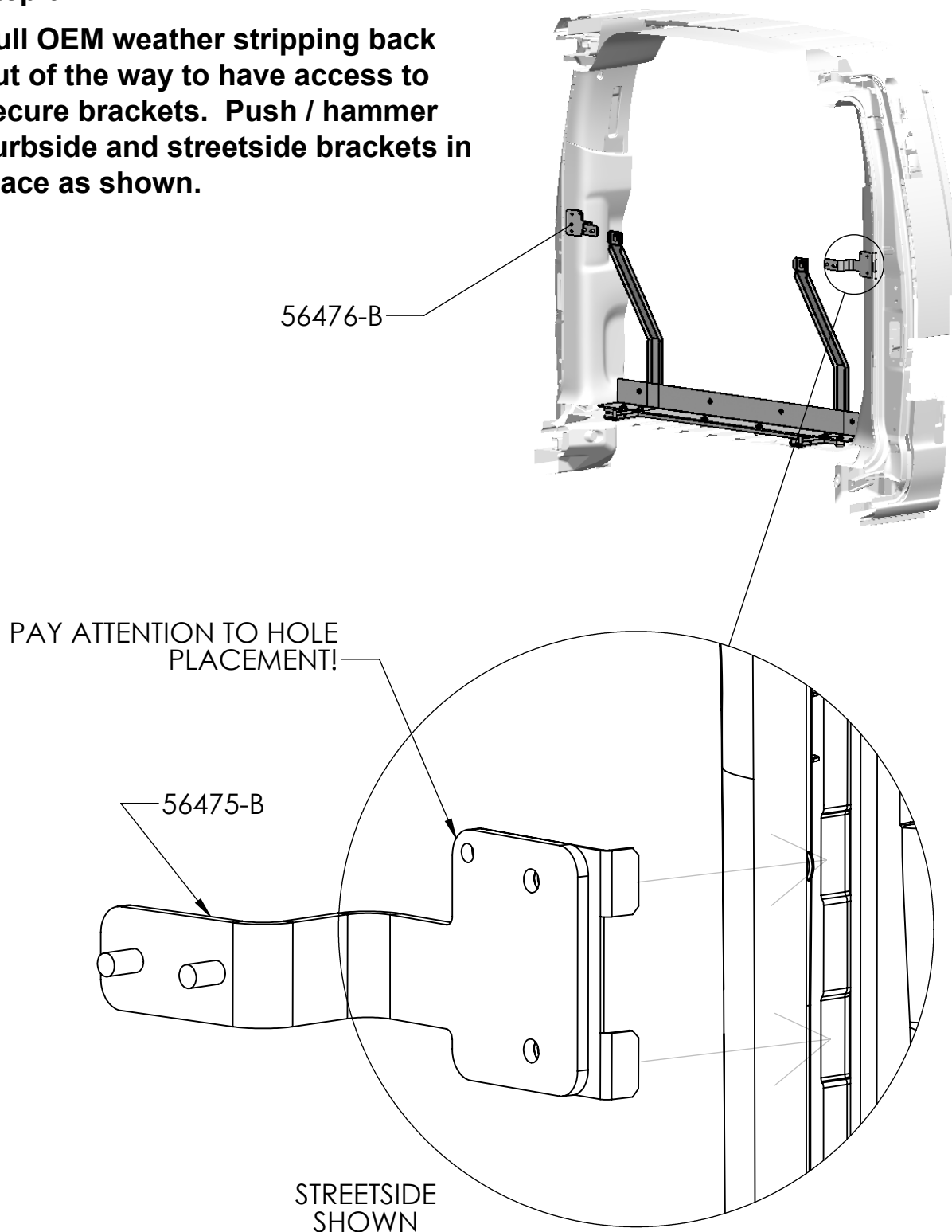
## Step 06

Adjust the leveling bolt so the vertical supports lean at a slight angle towards the cab area. (Recommend a 1/4" gap from vehicle floor to bottom of footer bracket.)



**Step 07**

**Pull OEM weather stripping back out of the way to have access to secure brackets. Push / hammer curbside and streetside brackets in place as shown.**



**Step 08**

**Cut OEM weather stripping 1/2" above and below the streetside and curbside buckets like shown. Then place seal back on vehicle.**



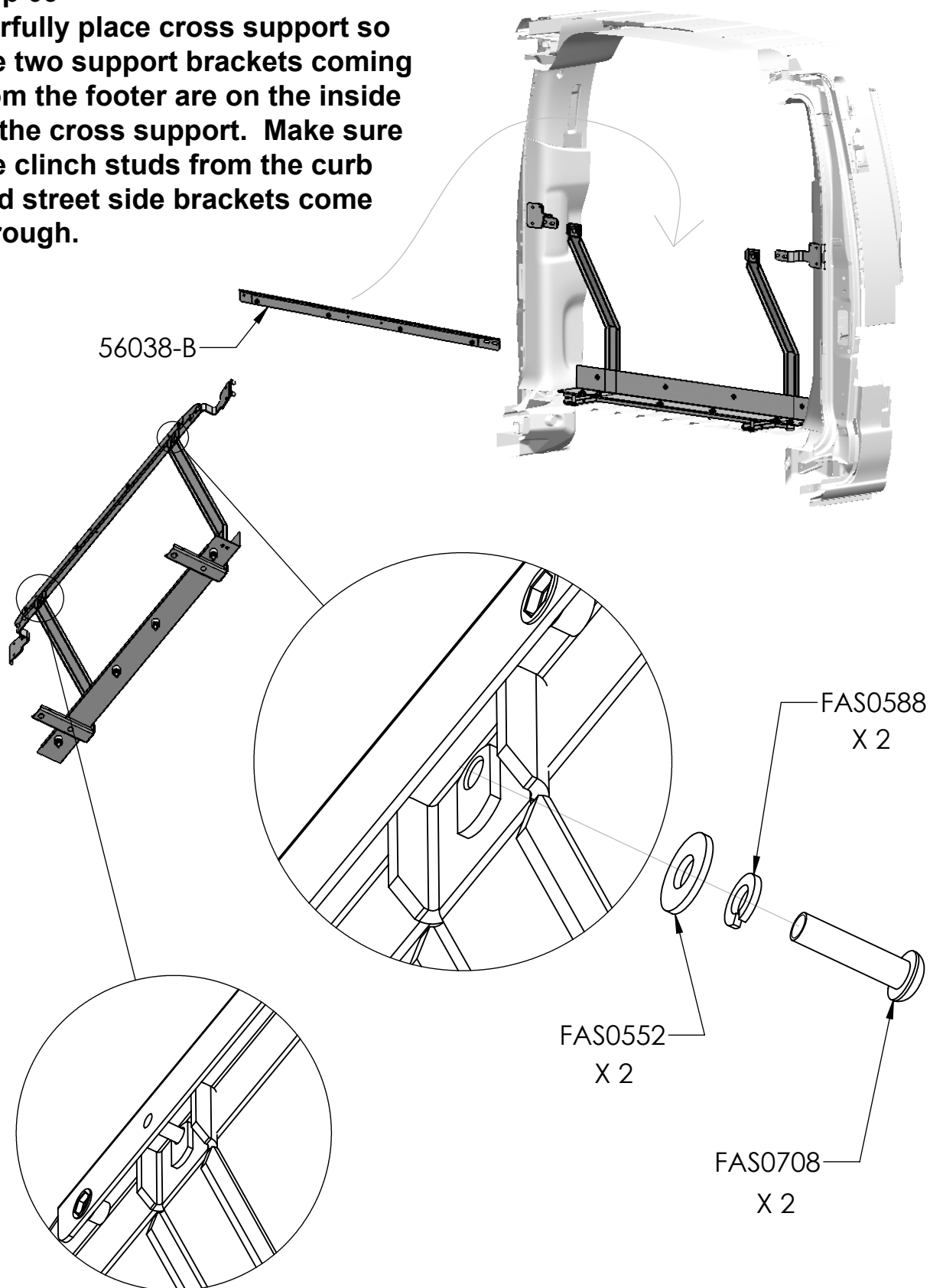
**CUT THIS AREA 4-1/2"**

**: IMPORTANT :  
ONLY CUT THIS TAB!**



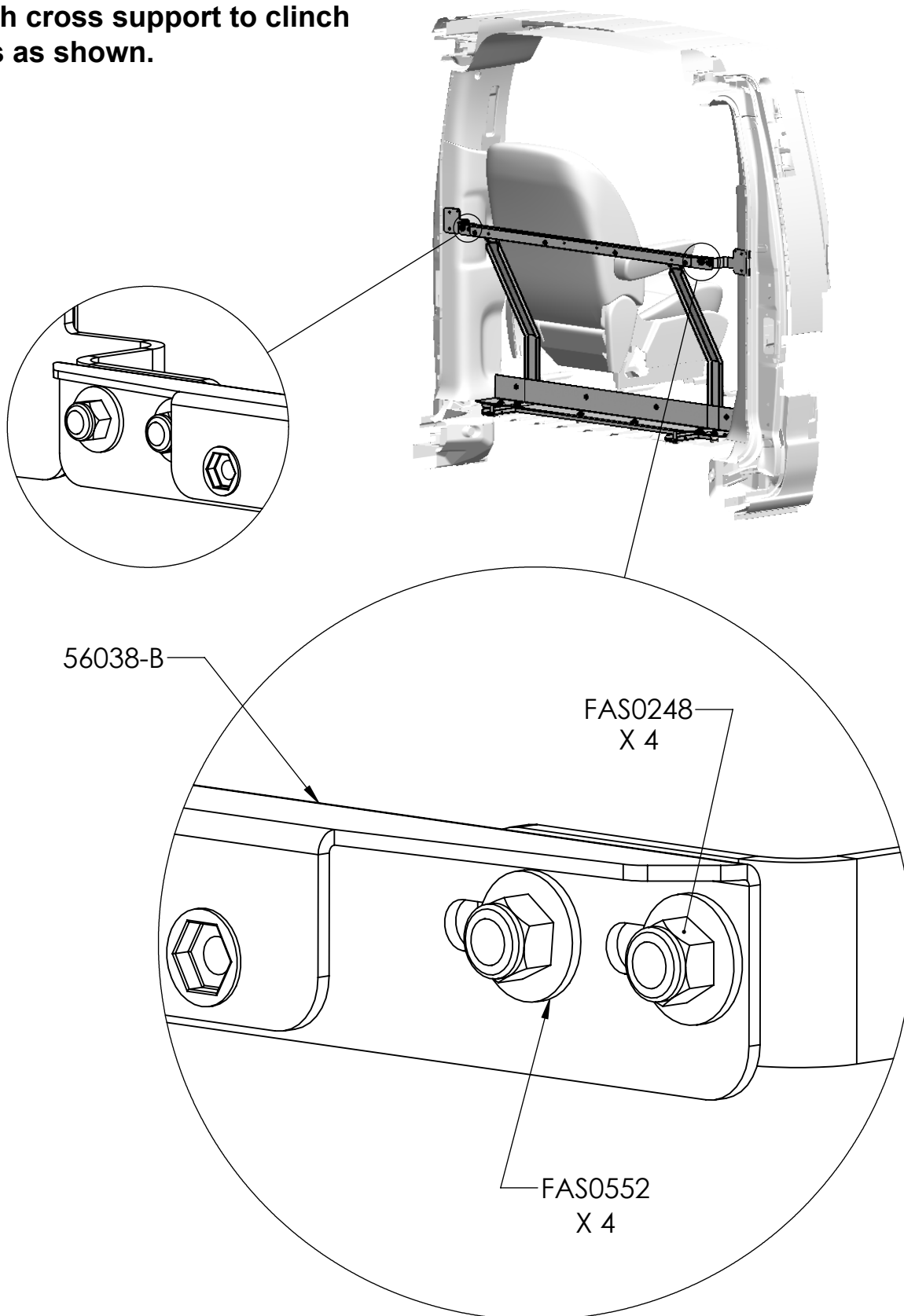
**Step 09**

Carefully place cross support so the two support brackets coming from the footer are on the inside of the cross support. Make sure the clinch studs from the curb and street side brackets come through.



**Step 10**

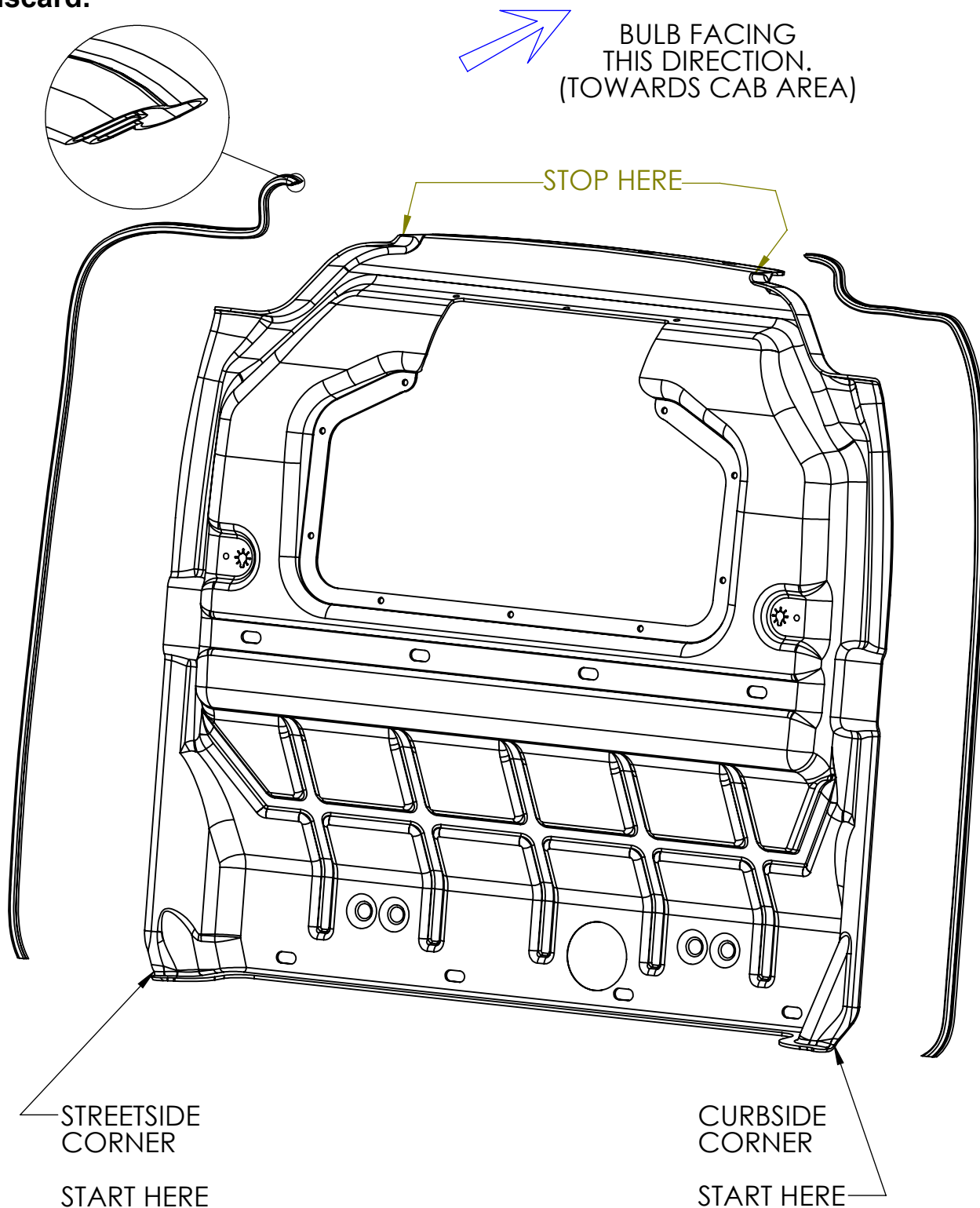
**Attach cross support to clinch studs as shown.**





**Step 11**

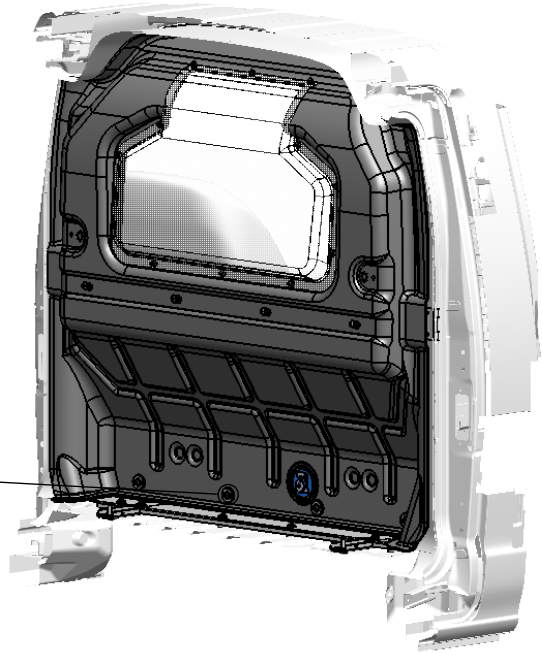
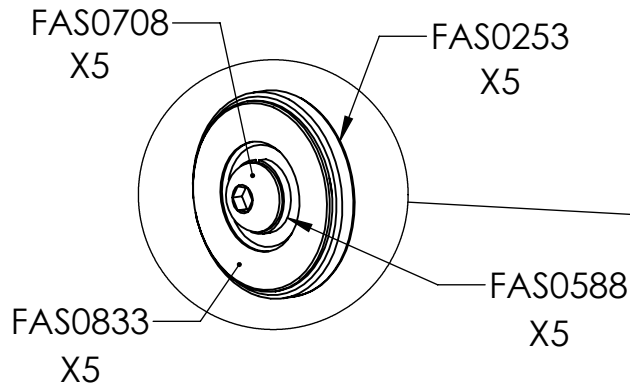
**Cut bulb seal in half. Place bulb seal to both sides of the partition as shown. Starting at the bottom corner and work up. Trim excess and discard.**





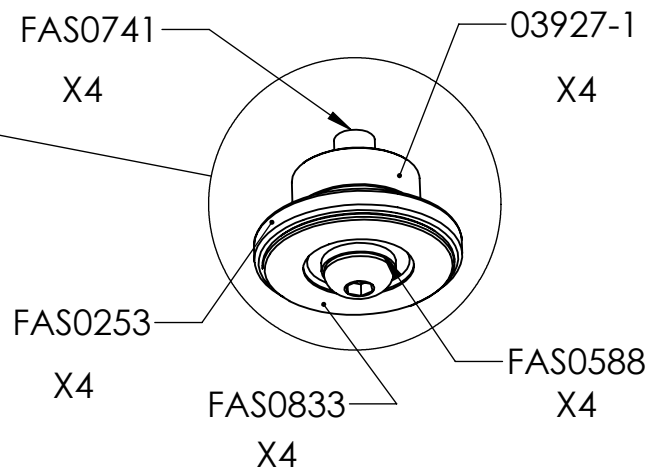
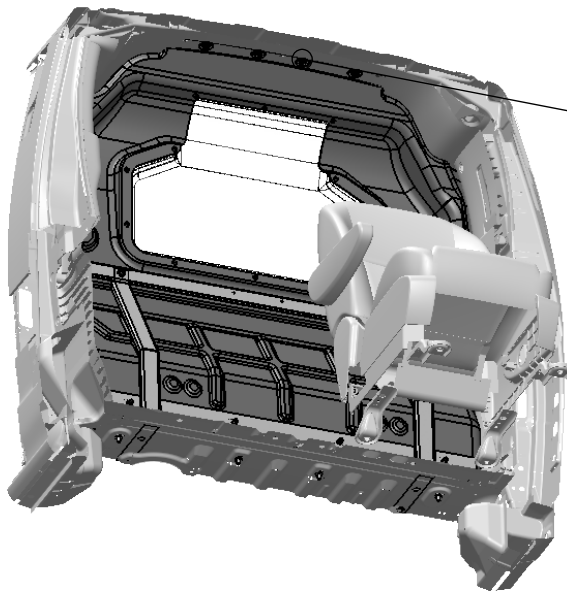
## Step 12

**Place partition into vehicle and fasten the 5 bottom slots into footer rail.**



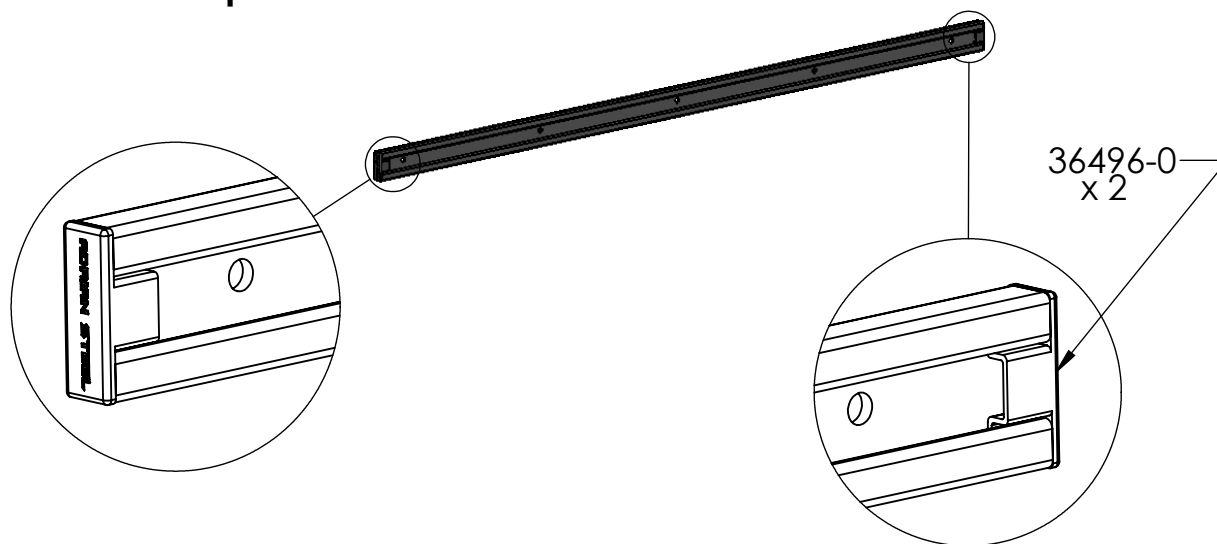
## Step 13

**Fasten the top 4 slots into OEM weldnuts as shown. Carefully place spacers between the partition and the headliner before securing.**



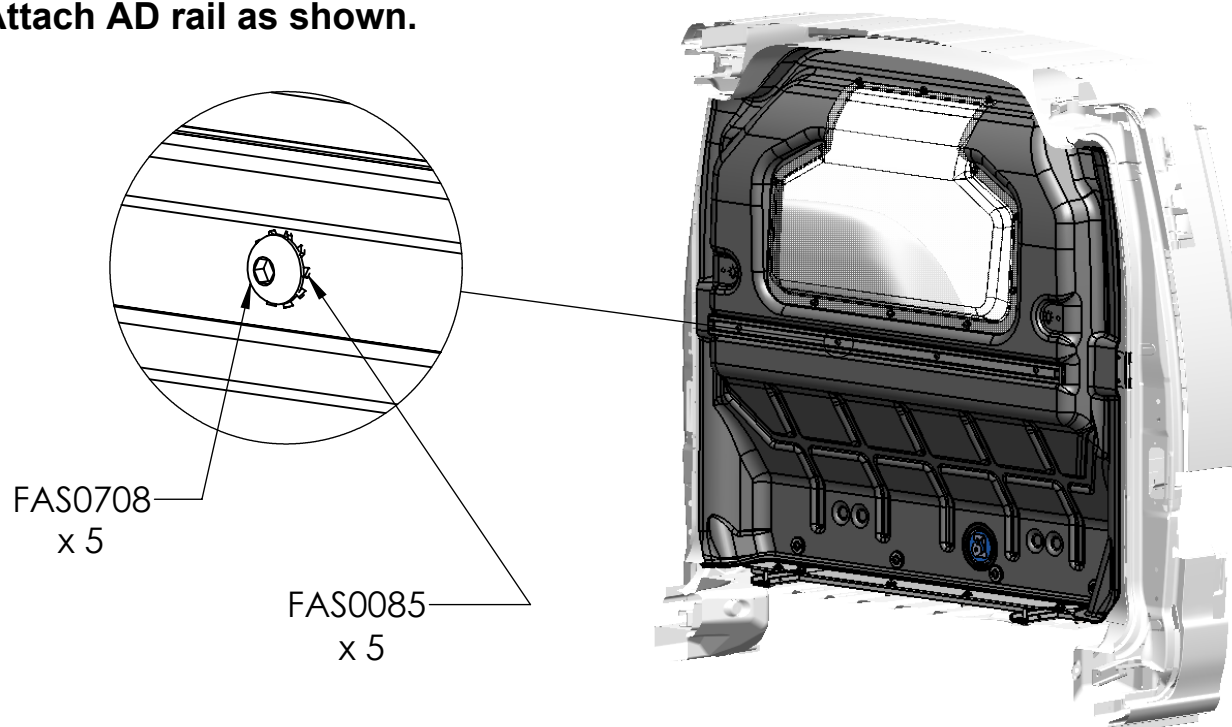
**Step 14**

**Attach end caps to AD rail as shown.**



**Step 15**

**Attach AD rail as shown.**



**YOUR INSTALLATION IS NOW COMPLETE.**

**DOUBLE CHECK ALL FASTENER LOCATIONS TO BE SURE THAT ALL  
FASTENERS ARE TIGHTENED TO SPECIFICATIONS.**

**YOUR INSTALLATION IS NOW COMPLETE!**

**STOW THIS COPY IN THE VEHICLE FOR FUTURE REFERENCES!**