



PRODUCT WEIGHT
3.76 LBS

WIDTH x DEPTH x HEIGHT
N/A

CAPACITY
N/A

COLOR
BLACK

CATALOG NUMBER
PARGHGM

PRODUCT FEATURES

PARGHGM IS DESIGNED TO PROVIDE A GRAB HANDLE FEATURE FOR THE GM FSV COMPOSITE PARTITION. THIS UNIT IS DESIGNED TO BE MOUNTED ON THE STREETSIDE ONLY!

SEE PAGE 2 FOR APPLICATION NOTES AND ACCESSORIES, OTHER PRODUCTS THAT WORK WITH THIS UNIT.



CATALOG NUMBER PARGHGM

PRODUCT APPLICATION

This product is designed to be installed on CARGO SIDE OF THE COMPOSITE PARTITION AT THE STREETSIDE DOOR OPENENING ON GM FULL SIZE VANS and IS vehicle specific.

ACCESSORIES THAT WILL WORK WITH THIS PRODUCT

CATALOG NUMBER

DESCRIPTION

SPECIAL APPLICATION NOTES



ADRIAN STEEL®

Cargo Management Solutions for Commercial Vehicles

Assembly/Installation Instructions and Owners Manual



PARGHGM
GRAB HANDLE
FOR
COMPOSITE PARTITIONS
PARGM & PARGM-NW
FOR GM FSV VANS

- PRECAUTIONS -





 **CAUTION** 
**THE USE AIR IMPACT TOOLS CAN
OVER-TORQUE FASTENERS AND
CAUSE FASTENER FAILURE!**



 **CAUTION** 
**ALL INSTALLATION HOLES SHOULD BE SEALED
WITH SILICON OR BUTYL SEALANT TO PREVENT
EXHAUST FUMES FROM ENTERING THE VEHICLE!**



 **DANGER** 
**INSPECT FOR FUEL TANK, FUEL LINES, BRAKE LINES, HIGH
VOLTAGE BATTERIES AND ELECTRICAL LINES PRIOR TO
DRILLING TO AVOID DAMAGING CRITICAL VEHICLE SYSTEMS
OR INJURY TO INSTALLER DURING INSTALLATION PROCESS!**



 **CAUTION** 
**TO AVOID DAMAGING THE VEHICLE ALWAYS USE DRILL STOPS WHEN
DRILLING ANY INSTALLATION HOLES!**



- IMPORTANT WARRANTY REQUIREMENTS -

1. SUBSTITUTING ADRIAN STEEL SPECIFIED FASTENERS FOR ASSEMBLY AND/OR INSTALLATION WILL VOID YOUR PRODUCT WARRANTY.
2. ALL HOLES DRILLED INTO VEHICLE SHOULD HAVE THE RAW METAL EDGES SEALED WITH A SELF-ETCHING PRIMER TO RESIST CORROSION AND POTENTIAL FASTENER POINT FAILURE.
3. ALL FASTENERS USED IN THE INSTALLATION OF THIS PRODUCT SHOULD BE TIGHTENED TO THE TORQUE(S) SPECIFIED IN THESE INSTRUCTIONS.
4. THESE INSTRUCTIONS SHOULD BE KEPT WITH THE VEHICLE.

THE BASIC TOOLS NEEDED FOR MOST INSTALLATIONS



DRILL



DRILL BIT WITH
STOP



RATCHET, SOCKETS
AND/OR WRENCHES



SCREWDRIVERS



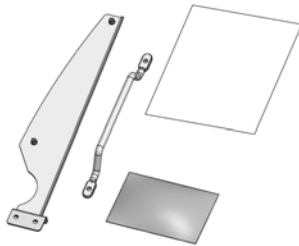
MEASURING TAPE

ADDITIONAL TOOLS MAY BE NEEDED FOR THIS INSTALLATION AND THEY WILL BE IDENTIFIED IN THE STEPS THAT FOLLOW.

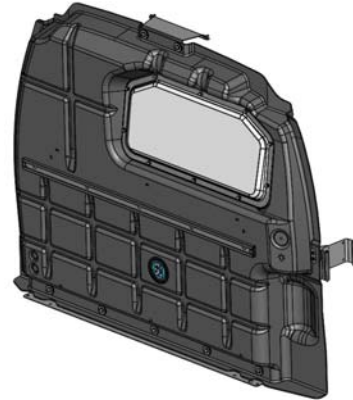
ADRIAN STEEL COMPANY • WWW.ADRIANSTEEL.COM • 906 JAMES STREET • ADRIAN, MI 49221 • 800-677-2726

BEFORE YOU START!

INSTALLING A GRAB HANDLE KIT ON A PREVIOUSLY INSTALLED PARTITION.



ADDING TO

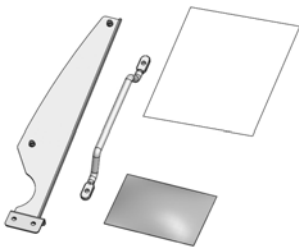


GRAB HANDLE KIT

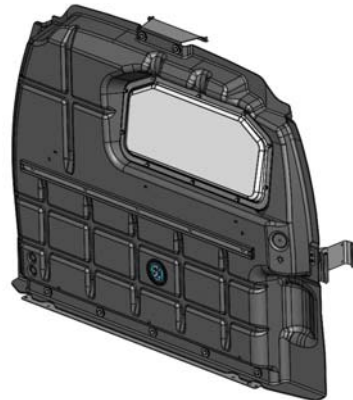
PREVIOUSLY INSTALLED
PARTITION

PROCEED TO STEP 01 OF THESE INSTRUCTIONS.

INSTALLING A GRAB HANDLE KIT WITH A NEW PARTITION INSTALLATION.



INSTALLING
WITH



GRAB HANDLE KIT

NEW PARTITION
INSTALLATION

BEGIN WITH STEP 01 OF THE PARTITION INSTALLATION IN-
STRUCTIONS 51253.

PARTS YOU WILL USE FOR STEP 01	DRILL/DRIVER	3/16" HEX DRIVER BIT	1/2" SOCKET	
				

Instructions for Step 01

REMOVE PARTITION PANEL AND FACE HARDWARE TO ALLOW FOR BRACKET INSTALLATION.



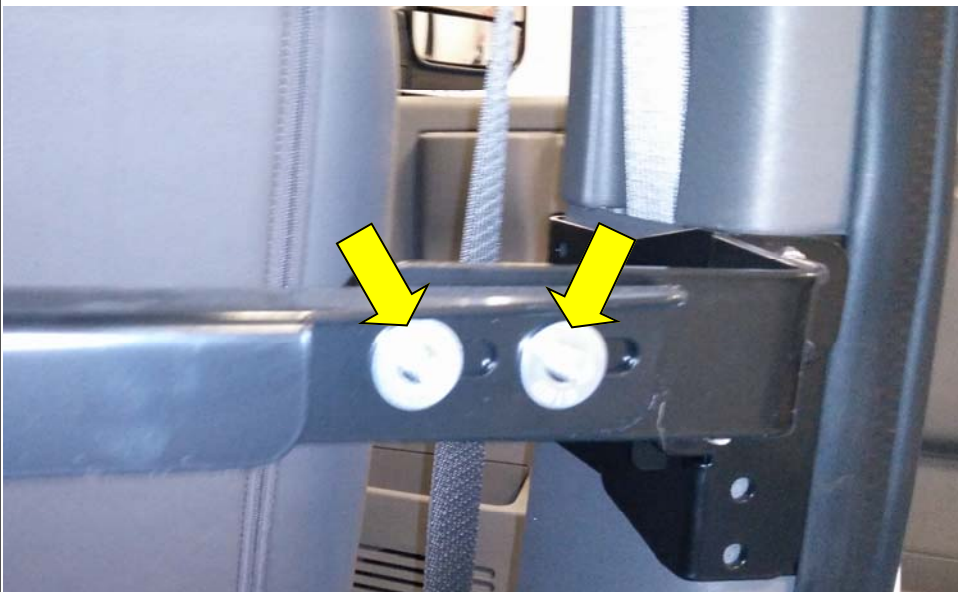
REMOVE ALL OF THE FASTENERS FROM THE CARGO SIDE OF THE PARTITION AND SET ASIDE FOR LATER RE-INSTALLATION.

REMOVE THE PARTITION PANEL AND SET-ASIDE FOR LATER RE-INSTALLATION.

PARTS YOU WILL USE FOR STEP 02	CROSS CHANNEL HARDWARE FROM PREVIOUS INSTALL.	DRILL/DRIVER	1/2" SOCKET	
				

Instructions for Step 02

REMOVE STREETSIDE FASTENERS AS SHOWN.



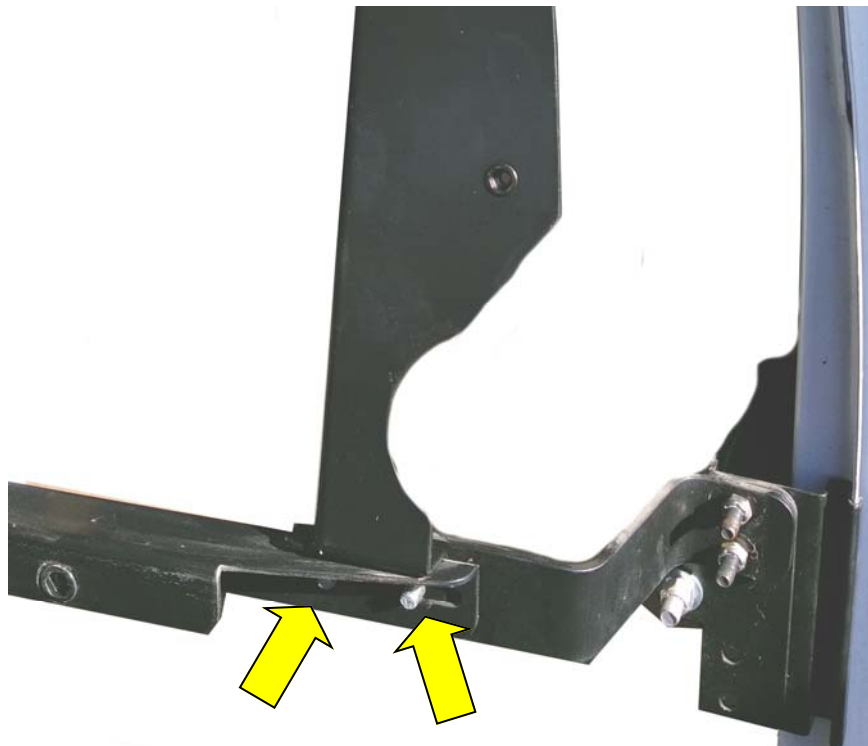
REMOVE THE TWO 5/16" NYLOCK NUTS AND WASHERS FROM THE CURBSIDE CROSS CHANNEL END.

DISCARD THE 5/16" NY-LOCK NUTS AND SET ASIDE THE WASHERS FOR RE-INSTALLATION.

PARTS YOU WILL USE FOR STEP 03	52488-B BRKT ASM, GRAB HAN- DLE, PARGM	FAS0676 5/16 NYLOCK LT NUT (2) EACH	DRILL/DRIVER	1/2" SOCKET
				

Instructions for Step 03

ATTACH MOUNTING BRACKET AS SHOWN.



INSERT MOUNTING BRACKET BETWEEN THE B-PILLAR BRACKET AND CROSS CHANNEL AS SHOWN.

ENSURE THAT THE BRACKET IS ORIENTED AS SHOWN.

REPLACE THE FLAT WASHERS AND USE THE 5/16" NYLOCK LT NUTS TO RESECURE THE MOUNTING CHANNEL TO THE B-PILLAR HARDWARE AS SHOWN.

PARTS YOU WILL USE FOR STEP 04	52488-B BRKT ASM, GRAB HAN- DLE, PARGM	FAS0069 1/4 X 1.0 THP SCREWS (2) EACH	DRILL/DRIVER	#2 PHILLIPS DRIVER
				

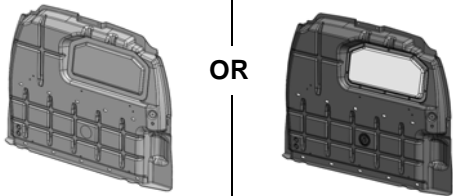

Instructions for Step 04

TEMPORARILY INSERT SCREWS AS SHOWN.



INSERT THE TWO (2) THP
SCREWS FROM THE CAB
SIDE OF THE BRACKET
SO THAT THEY PRO-
TRUDE FROM THE
BRACKET AS SHOWN.

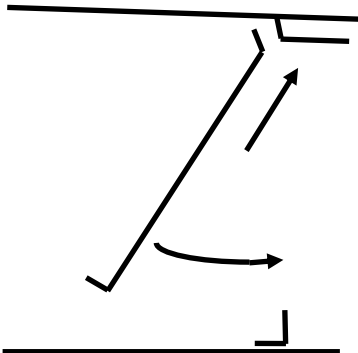
THESE WILL BE USED TO
MARK THE LOCATIONS
FOR DRILLING THE
MOUNTING HOLES INTO
THE PARTITION PANEL.

PARTS YOU WILL USE FOR STEP 05	PARTITION PANEL ASSEMBLIES WITH BULB SEALS INSTALLED	RUBBER Mallet	
			

Instructions for Step 05

RE- INSERT PARTITION PANEL INTO VEHICLE.

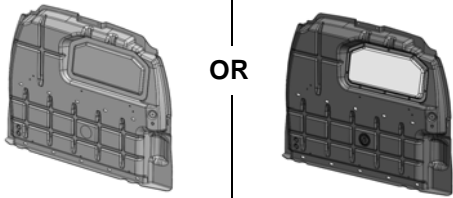


INSERT TOP FIRST
THEN PIVOT FOR-
WARD AND INTO
PLACE AGAINST
FOOTER.



RE- INSERT PARTITION
INTO VEHICLE WITH BOT-
TOM EDGE AWAY FROM
THE FOOTER WITH THE
TOP CONTACTING THE
HEADER AREA FIRST AND
THEN PIVOT UP AND FOR-
WARD INTO PLACE
AGAINST B-PILLARS AND
FOOTER.

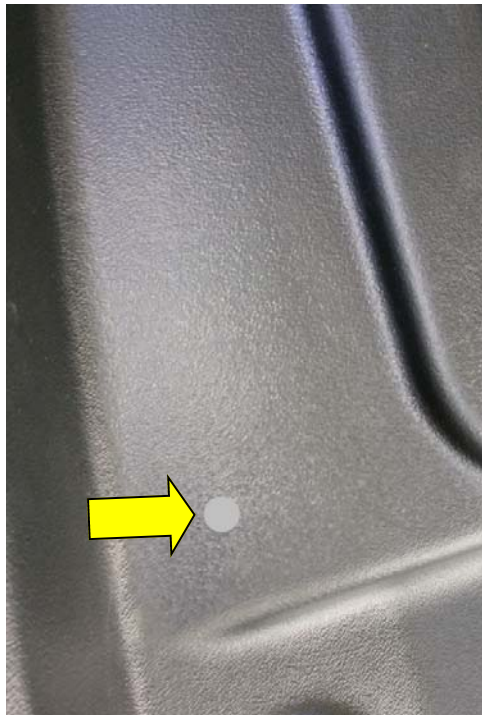
MAKE SURE THAT THE
PANEL IS PROPERLY PO-
SITIONED AND THEN AP-
PLY AN IMPACT FORCE
USING A RUBBER Mallet
(OR YOUR HAND) TO
MAKE INDENTATIONS
MARKS FOR EACH
MOUNTING POINT
(SCREWS INSERTED
FROM PREVIOUS STEP).

REMOVE THE TWO (2)
SCREWS FROM THE
MOUNTING BRACKET. RE-
MOVE THE PANEL TO
GAIN ACCESS FOR DRILL-
ING THE TWO (2) MOUNT-
ING HOLES.

PARTS YOU WILL USE FOR STEP 06	PARTITION PANEL ASSEMBLIES WITH BULB SEALS INSTALLED	DRILL	3/8" DRILL BIT WITH STOP
			

Instructions for Step 06

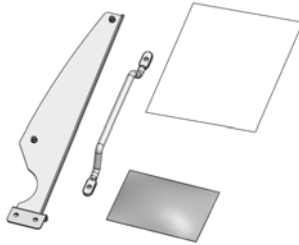
DRILL MOUNTING HOLES INTO PARTITION PANEL.



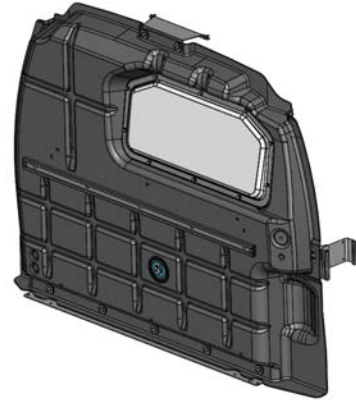
LOCATE THE TWO (2) LOCATION MARKS ON THE CAB SIDE OF THE PARTITION PANEL AND THEN CAREFULLY DRILL THE TWO (2) 3/8" DIAMETER MOUNTING HOLES.

STOP!

INSTALLING A GRAB HANDLE KIT WITH A NEW PARTITION INSTALLATION.



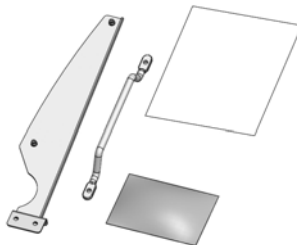
GRAB HANDLE KIT



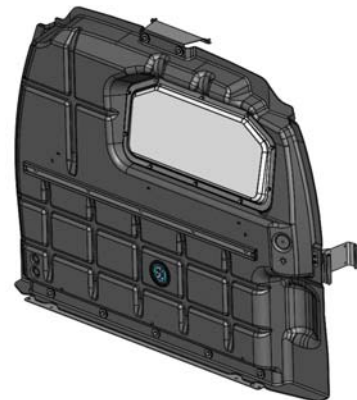
**NEW PARTITION
INSTALLATION**

RETURN TO STEP 10 OF THE PARTITION INSTALLATION INSTRUCTIONS 51253.

INSTALLING A GRAB HANDLE KIT ON A PREVIOUSLY INSTALLED PARTITION.

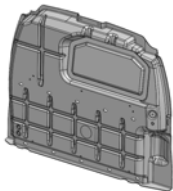



GRAB HANDLE KIT



**PREVIOUSLY INSTALLED
PARTITION**

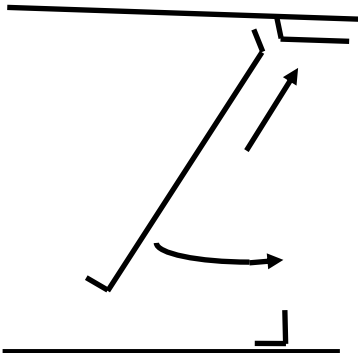
CONTINUE ON TO STEP 07 OF THESE INSTRUCTIONS.

PARTS YOU WILL USE FOR STEP 07	PARTITION PANEL ASSEMBLIES WITH BULB SEALS INSTALLED			
		OR		

Instructions for Step 07

RE- INSERT PARTITION PANEL INTO VEHICLE.

INSERT TOP FIRST
THEN PIVOT FOR-
WARD AND INTO
PLACE AGAINST
FOOTER.



RE- INSERT PARTITION
INTO VEHICLE WITH BOT-
TOM EDGE AWAY FROM
THE FOOTER WITH THE
TOP CONTACTING THE
HEADER AREA FIRST AND
THEN PIVOT UP AND FOR-
WARD INTO PLACE
AGAINST B-PILLARS AND
FOOTER.

MAKE SURE THAT THE
PANEL IS PROPERLY PO-
SITIONED.

PARTS YOU WILL USE FOR STEP 08	51248-B MTG. PLATE, PARGM (2) EACH	FAS0676 5/16 LT NYLOCK NUT (4) EACH	DRILL/DRIVER	1/2" SOCKET
				

Instructions for Step 08

ATTACH MOUNTING PLATES AS SHOWN.



RE-INSTALL THE MOUNTING PLATES ON BOTH B-PILLAR BRACKETS.

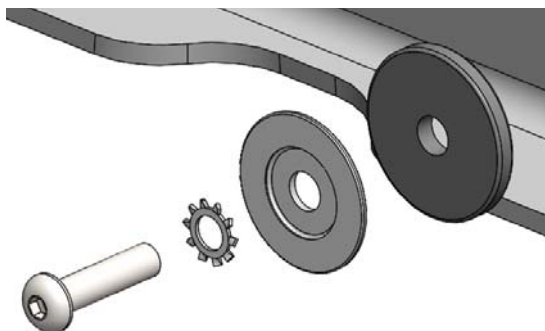
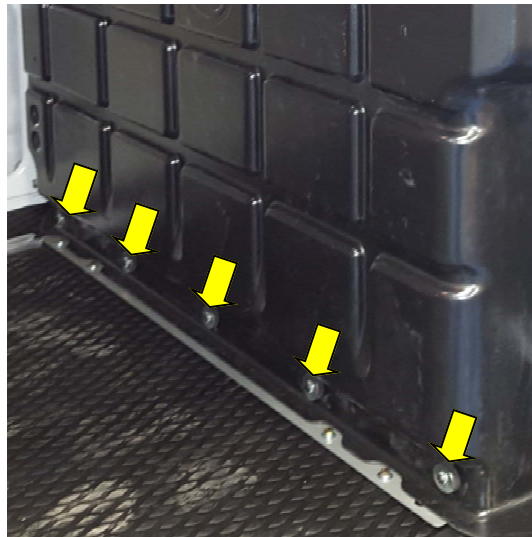
PLACE MOUNTING PLATE OVER THE TWO FASTENER STUDS ON BOTH OF THE B-PILLAR BRACKETS AND AGAINST THE PARTITION PANEL SURFACE.

INSTALL TWO (2) 5/16" NY-LOCK NUTS ON BOTH CURBSIDE AND STREETSIDE AND FULLY TIGHTEN.

PARTS YOU WILL USE FOR STEP 09	FAS0708 BHCS 5/16X1-1/4 (5) EACH	FAS0085 5/16 LOCK WASHER (5) EACH	FAS0833 WASHER, CUP (5) EACH	FAS0253 WASHER, IV-2 (5) EACH
				
	DRILL/DRIVER 	3/16" HEX DRIVER BIT 		

Instructions for Step 09

RE-ATTACH PARTITION PANEL AS SHOWN.

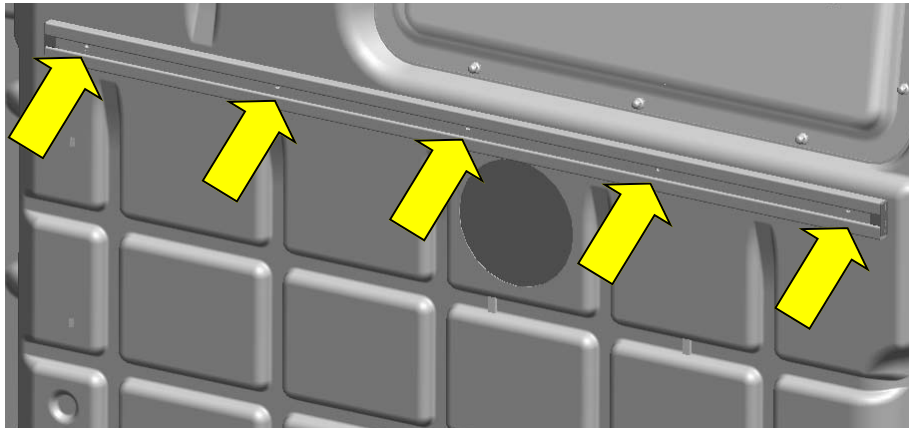


RE-ATTACH THE PARTITION PANEL TO THE PARTITION FOOTER USING THE ABOVE LISTED 5/16" FASTENERS AT FIVE (5) PLACES AS SHOWN. FULLY TIGHTEN THESE FIVE (5) FASTENERS.

PARTS YOU WILL USE FOR STEP 10	DRILL/DRIVER	3/16" HEX DRIVER BIT	FAS0708 BHCS 5/16X1-1/4 (5) EACH	FAS0085 5/16 LOCK WASHER (5) EACH
				

Instructions for Step 10

RE-ATTACH THE AD RAIL AND FASTENERS.



RE-ATTACH THE AD RAIL
AND FULLY TIGHTEN THE
FIVE (5) FASTENERS
THAT ATTACH THE AD
RAIL.



An exploded view diagram showing four mechanical components arranged in a row from left to right: a bolt, a gear, a washer, and another washer. The bolt is a long, cylindrical fastener with a hexagonal head. The gear is a small, circular component with eight teeth. The two washers are flat, circular discs with a central hole, one of which is slightly larger than the other.

PARTS YOU WILL USE FOR STEP 12	52601 GRAB HANDLE	FAS0069 1/4 X 1.0 THP SCREWS (2) EACH	FAS0067 1/4" FLAT WASHER (2) EACH	FAS0066 1/4" LOCK WASHER (2) EACH
				
	DRILL/DRIVER	#2 PHILLIPS DRIVER BIT		
				

Instructions for Step 12

ATTACH THE GRAB HANDLE TO THE PARTITION AND BRACKET.



ATTACH THE GRAB HANDLE TO THE PARTITION PANEL USING THE ABOVE LISTED FASTENERS AND FULLY TIGHTEN.

YOUR GRAB HANDLE INSTALLATION IS NOW COMPLETE!