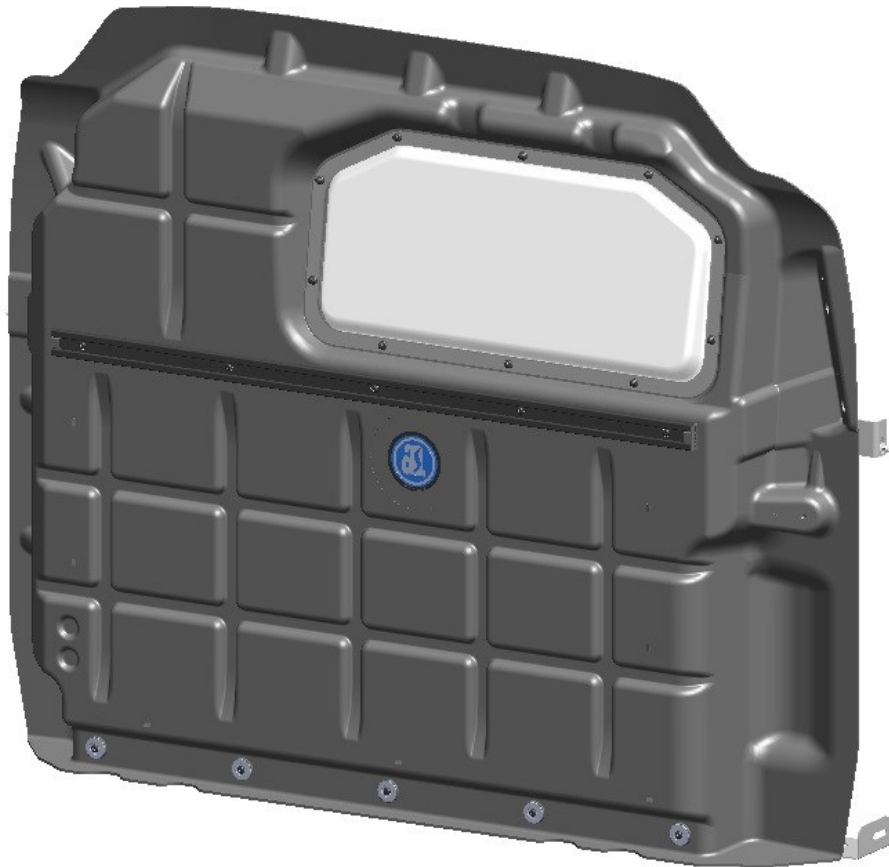


Introduction / Comments:

Assembly / Installatino Instructions for Transit Low Roof Crew Van Composite Partition

Note:

It is advised that all fasteners used in this assembly and installation should be checked for tightness at the following intervals: @ 2-weeks and again @ 6-weeks of operation. This preventive maintenance step must be completed to ensure your Product gives you long service life.



(PARFTLC SHOWN)
PARFTLC & PARFTLC-NW

FOR FORD TRANSIT LOW ROOF CREW VANS

- PRECAUTIONS -





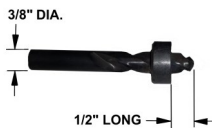
 **CAUTION** 
**THE USE OF AIR IMPACT TOOLS CAN
OVER-TORQUE FASTENERS AND
CAUSE FASTENER FAILURE!**





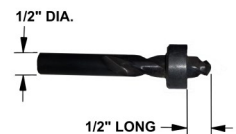
 **CAUTION** 
**ALL INSTALLATION HOLES SHOULD BE SEALED
WITH SILICON OR BUTYL SEALANT TO PREVENT
EXHAUST FUMES FROM ENTERING THE VEHICLE!**



 **DANGER** 
**INSPECT FOR FUEL TANK, FUEL LINES, BRAKE LINES, HIGH
VOLTAGE BATTERIES AND ELECTRICAL LINES PRIOR TO
DRILLING TO AVOID DAMAGING CRITICAL VEHICLE SYSTEMS
OR INJURY TO INSTALLER DURING INSTALLATION PROCESS!**



 **CAUTION** 
**TO AVOID DAMAGING THE VEHICLE ALWAYS USE DRILL
STOPS WHEN DRILLING ANY INSTALLATION HOLES!
ADRIAN AVAILABLE PART #'S 31119-0 (3/8" X 1/2"
DEEP), 31121-0 (1/2" x 1/2" DEEP)**



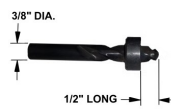
- IMPORTANT WARRANTY REQUIREMENTS -

1. SUBSTITUTING ADRIAN STEEL SPECIFIED FASTENERS FOR ASSEMBLY AND/OR INSTALLATION WILL VOID YOUR PRODUCT WARRANTY.
2. ALL HOLES DRILLED INTO VEHICLE SHOULD HAVE THE RAW METAL EDGES SEALED WITH A SELF-ETCHING PRIMER TO RESIST CORROSION AND POTENTIAL FASTENER POINT FAILURE.
3. ALL FASTENERS USED IN THE INSTALLATION OF THIS PRODUCT SHOULD BE TIGHTENED TO THE TORQUE(S) SPECIFIED IN THESE INSTRUCTIONS.
4. THESE INSTRUCTIONS SHOULD BE KEPT WITH THE VEHICLE.

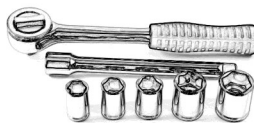
THE BASIC TOOLS NEEDED FOR MOST INSTALLATIONS



DRILL



DRILL BIT WITH
STOP



RATCHET, SOCKETS
AND/OR WRENCHES



SCREWDRIVERS



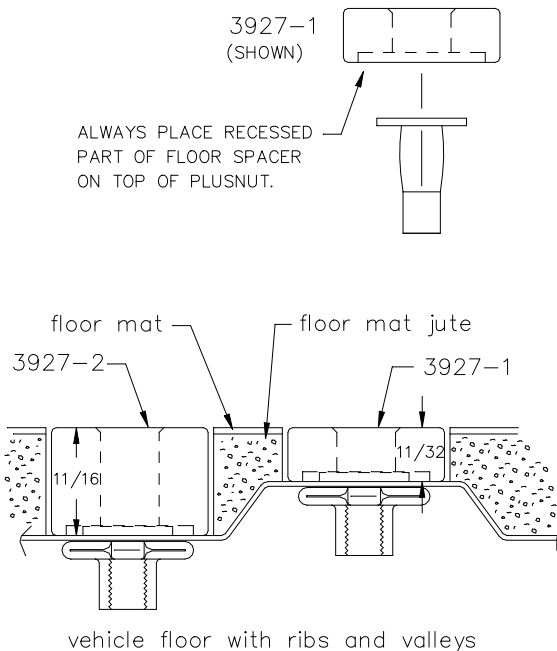
MEASURING TAPE

ADDITIONAL TOOLS MAY BE NEEDED FOR THIS INSTALLATION AND THEY WILL BE IDENTIFIED IN THE STEPS THAT FOLLOW.

If your vehicle contains carpet or a rubber floor mat you will need to prepare the mounting location. Position the product to be installed into the vehicle and once you are satisfied with the mounting locations, mark the mounting locations. Using a 1-3/16" diameter carpet cutter (P/N: 31183-0). Select the appropriate floor spacers as shown in the illustration. Set those aside for use later into the installation process. Using the correct drill bit size for the selected plusnut, drill the mounting holes in the vehicle sheet metal to prepare for installing the plusnuts.

If you are thru-bolting at any of the locations simply drill a hole that is 1/16" larger than the bolt size(s) for those locations.

Once you have drilled the holes into the vehicle, the raw metal edges should be sealed using a self-etching primer to resist corrosion and potential fastener point failure.



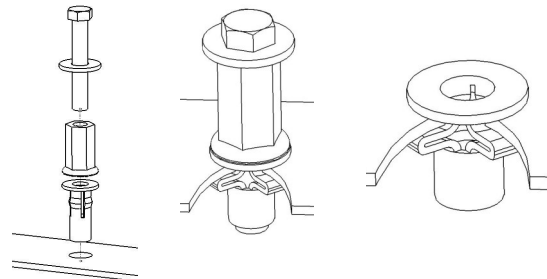
A PLUSNUT (RIVNUT) SETTING TOOL IS REQUIRED FOR PLUSNUT (RIVNUT) INSTALLATION . PLUS NUT SETTING TOOL CAN BE ORDERED THROUGH ADRIAN STEEL, OR USE AN AIR POWERED PLUSNUT SETTING GUN.

1/4-20UNC Plusnut (FAS0052) Use 3/8" dia. drill w/stop

FAS0080 SCREW, HXHD, 1/4-20UNCx2.00", G8
FAS0067 WASHER, FLAT, 1/4"ID
22200-0 PLUSNUT TOOL

5/16-18UNC Plusnut (FAS0091) Use 1/2" dia. drill w/stop

FAS0095 SCREW, HXHD, 5/16-18UNCx2.00", G8
FAS0086 WASHER, FLAT, 5/16"ID
22200-0 PLUSNUT TOOL

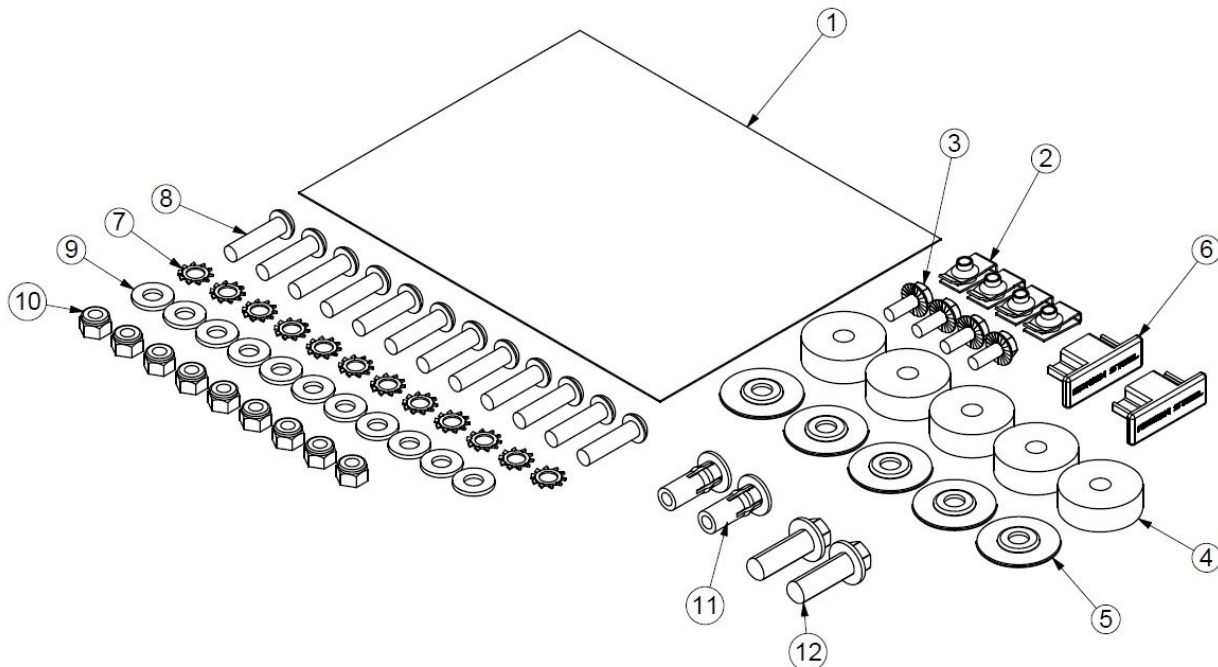


Place barrel of the plusnut body in sheet metal thru hole until flange is flush with sheet metal.

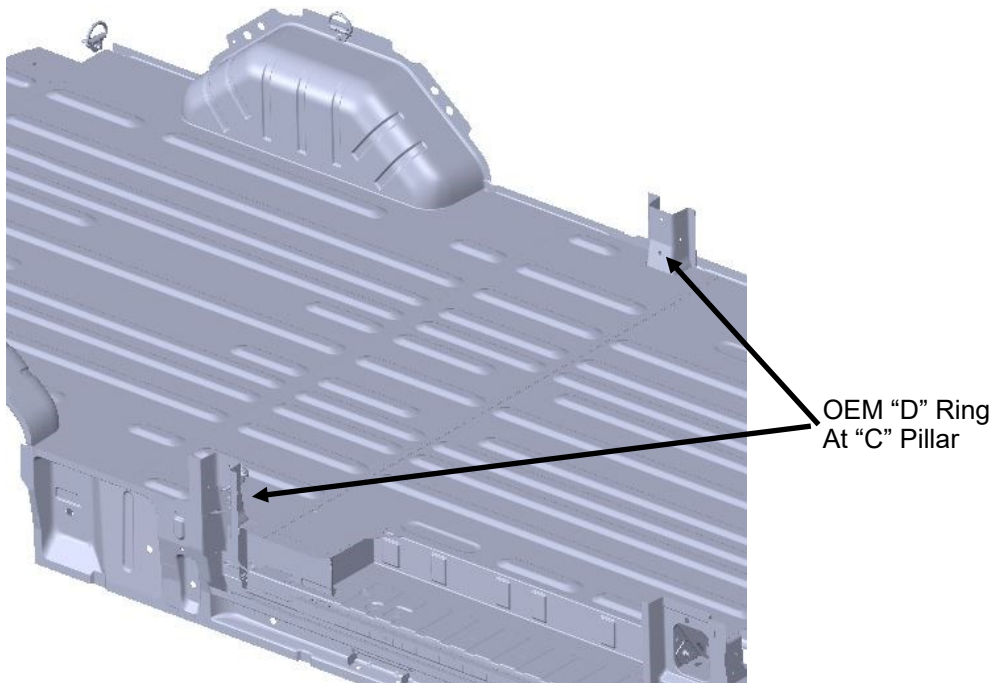
Using a 9/16" combination wrench of plusnut tool body and a second hand wrench, ratchet, or air tool, rotate the hex bolt head CW to draw plus nut flanges up (set the plusnut).

**Installation and/or Assembly Fasteners
BAG62980**

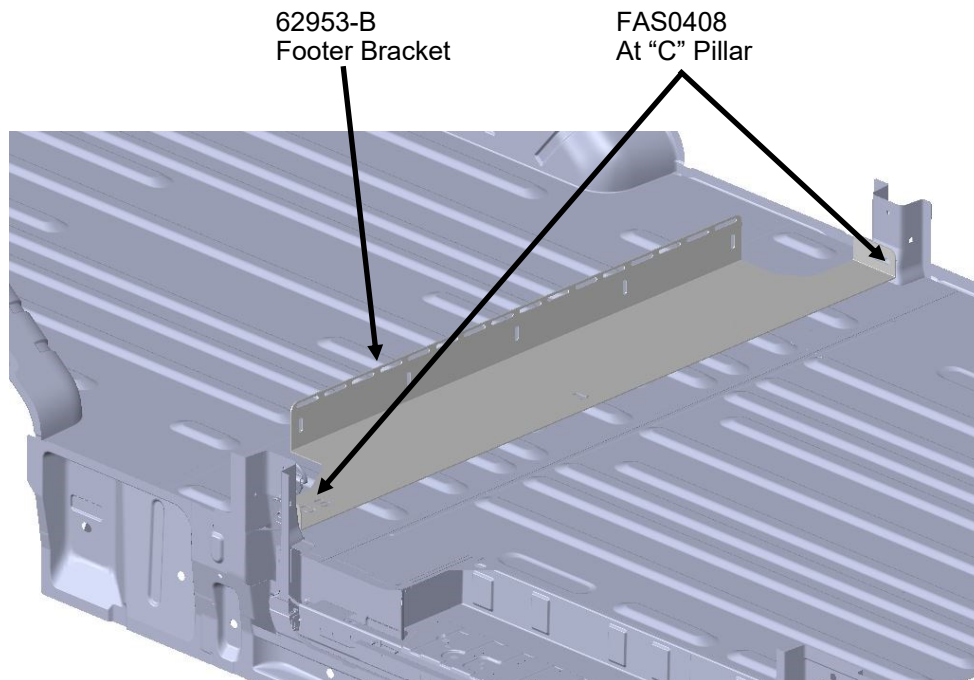
ITEM NO.	PART NUMBER	DESCRIPTION	QTY.
1	BAG0709-A	7" x 9" 3MIL AUTOBAG	1
2	FAS0711	SPRING,CLIP 1/4-20 BK PH	4
3	FAS0018	SCREW,HH SFLNG 1/4-20X.62 ZP	4
4	FAS0253	WASHER, FOAM RUBBER, 1.50X0.375X0.5	5
5	FAS0833	WASHER, CUP FLANGED 1.5"	5
6	36496-0	END CAP	2
7	FAS0085	WASHER,LCK EXT 5/16 ZP	12
8	FAS0708	SCREW,BHCS 5/16-18X1.25ZN	12
9	FAS0552	Washer, Flat, 5/16, SST	11
10	FAS0248	Nut, Nylon Insert Lock, 5/16-18 SST	9
11	FAS0091	Plusnut, 5/16	2
12	FAS0408	SCREW,HH 7/16-20 X 1.25	2



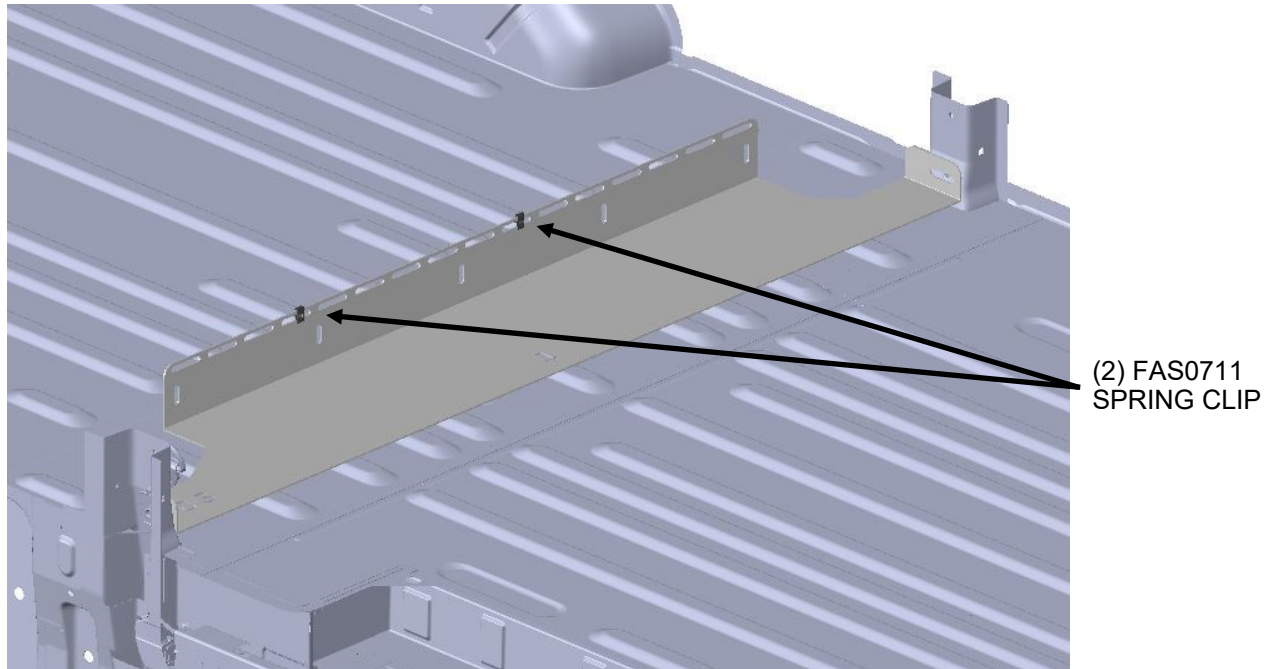
Step 01 Remove OEM “D” Rings if present from the bottom of the “C” Pillar. Use a T-50 Torx Bit.



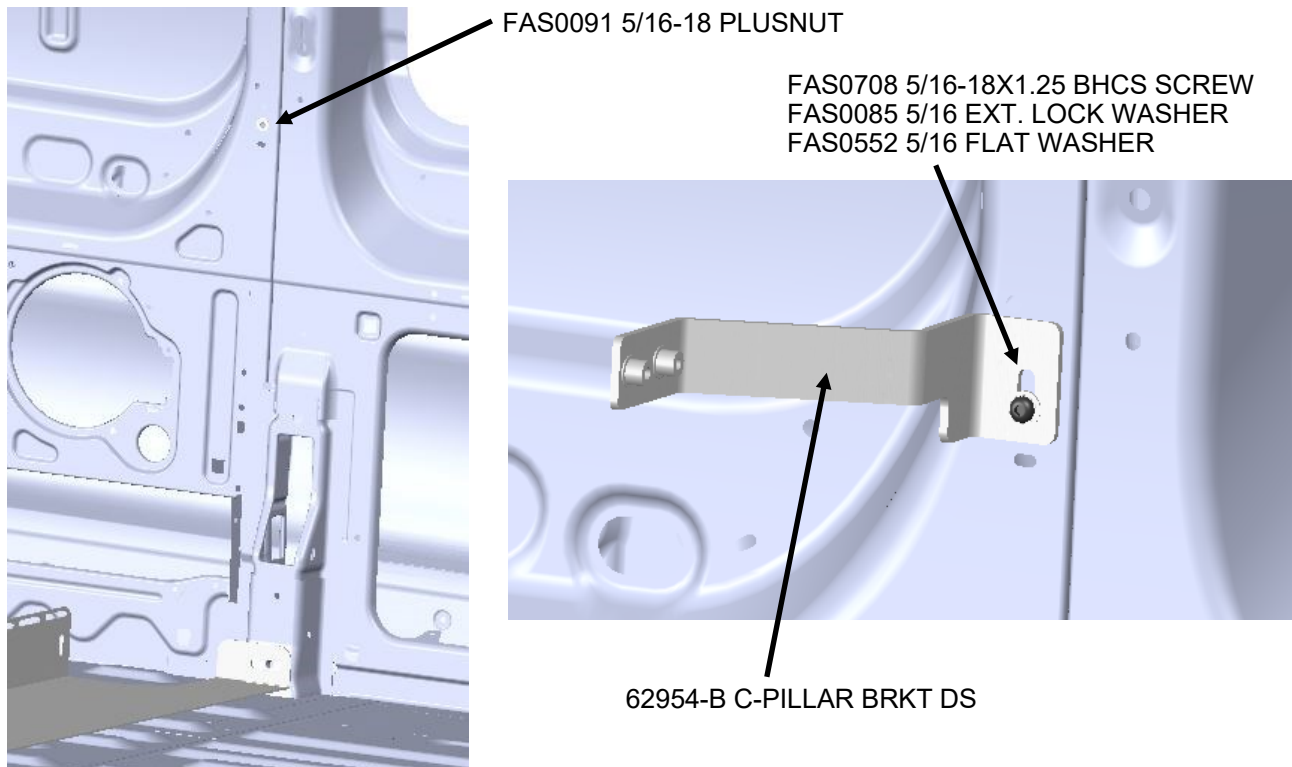
Step 02 Mount Footer Bracket to Vehicle using FAS0408. (You may have to slide the Footer bracket under the sub floor).



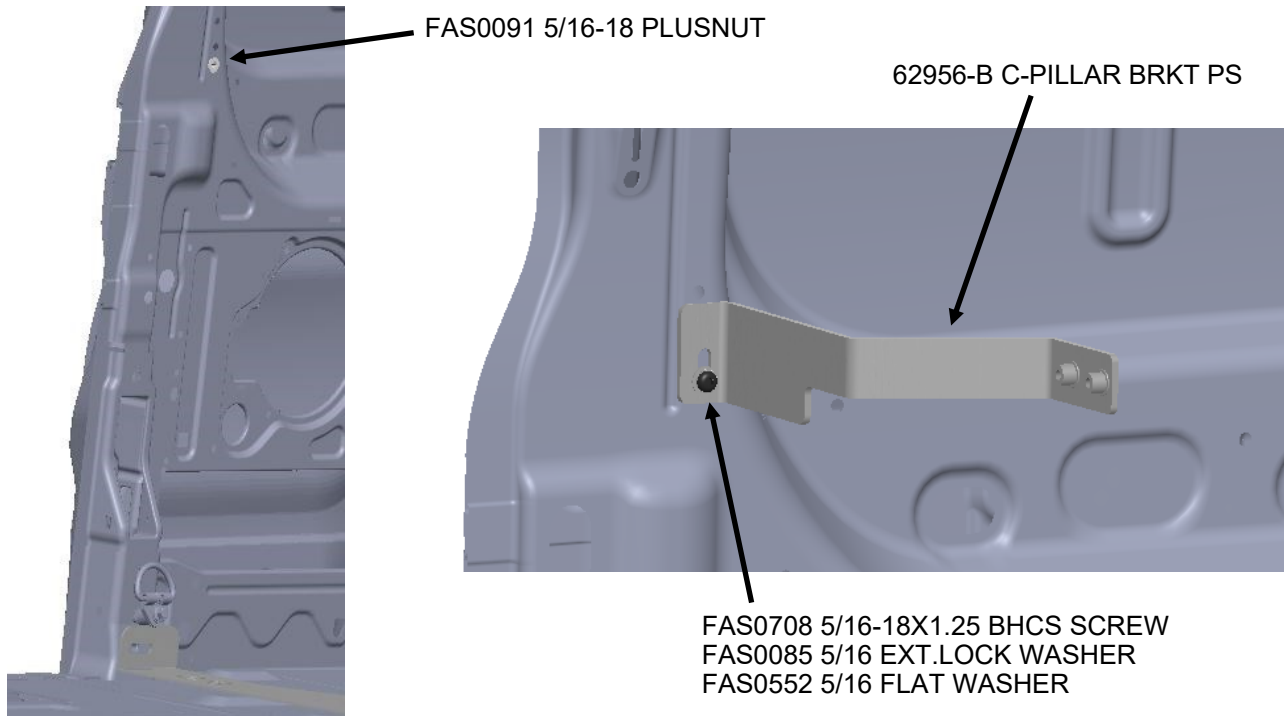
Step 03 Add Spring Clips to Footer Bracket with the threaded portion facing towards the Rear of the vehicle in the 4th and 10th slots from the passenger side end as shown.



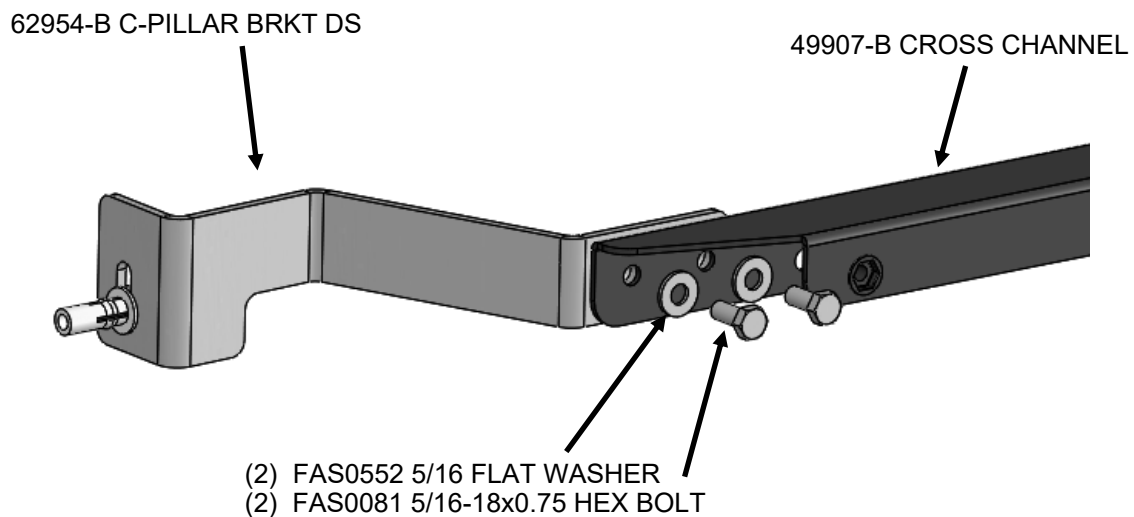
Step 04 Enlarge existing hole using a 1/2" Dia. Drill Bit with Drill Stop and set 5/16-18 Plusnut for "C" Pillar Bracket.



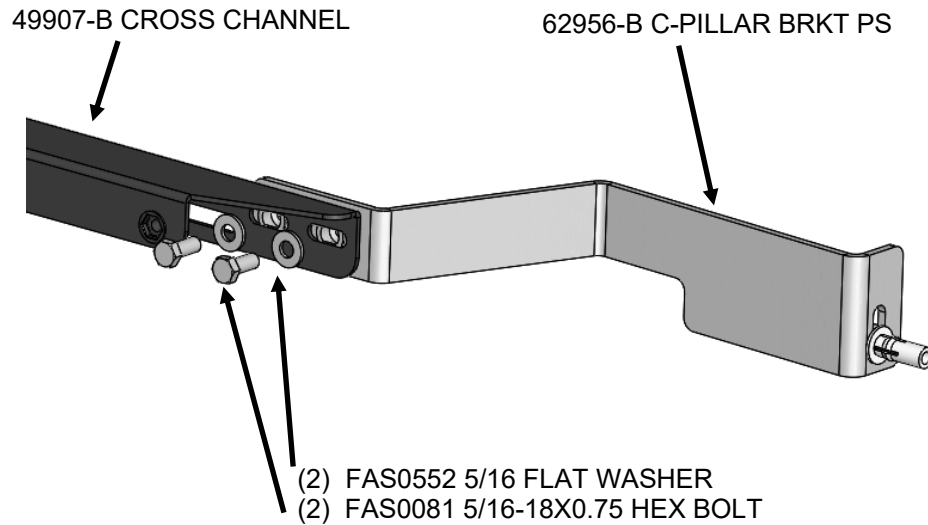
Step 05 Enlarge existing hole using a 1/2" Dia. Drill Bit with Drill Stop and set 5/16-18 Plusnut for "C"-Pillar Bracket.



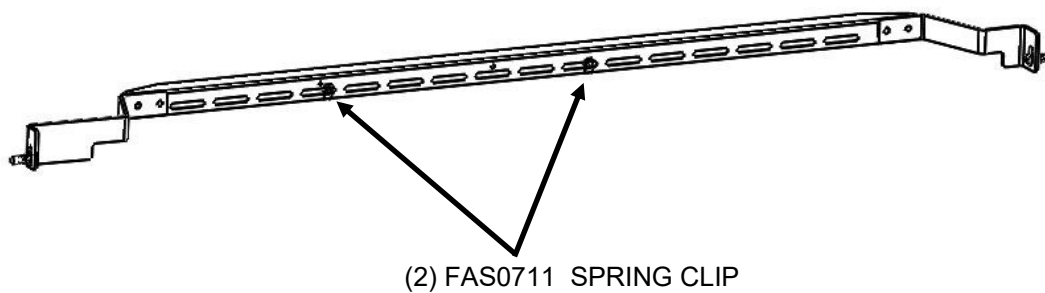
Step 06 Attach Cross Channel to "C" Pillar DS Bracket. The end of the Cross Channel with Holes instead of slots is going to mount to the Driver Side Bracket.



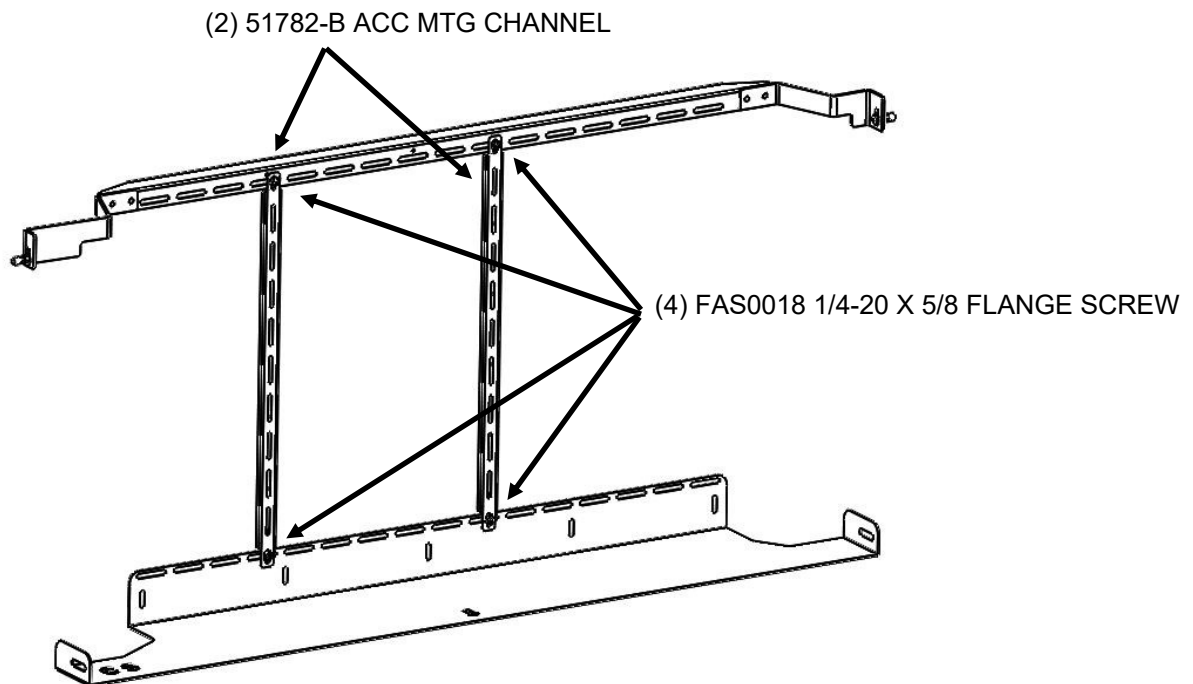
Step 07 Attach Cross Channel to "C" Pillar PS Bracket. The end of the Cross Channel with Slots will mount to the Passenger Side Bracket.



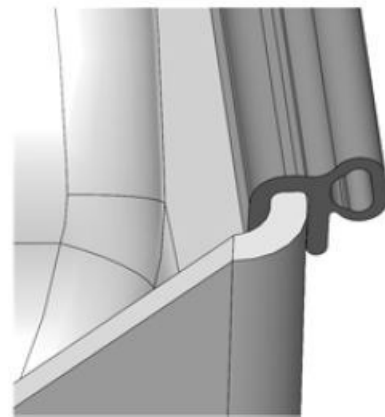
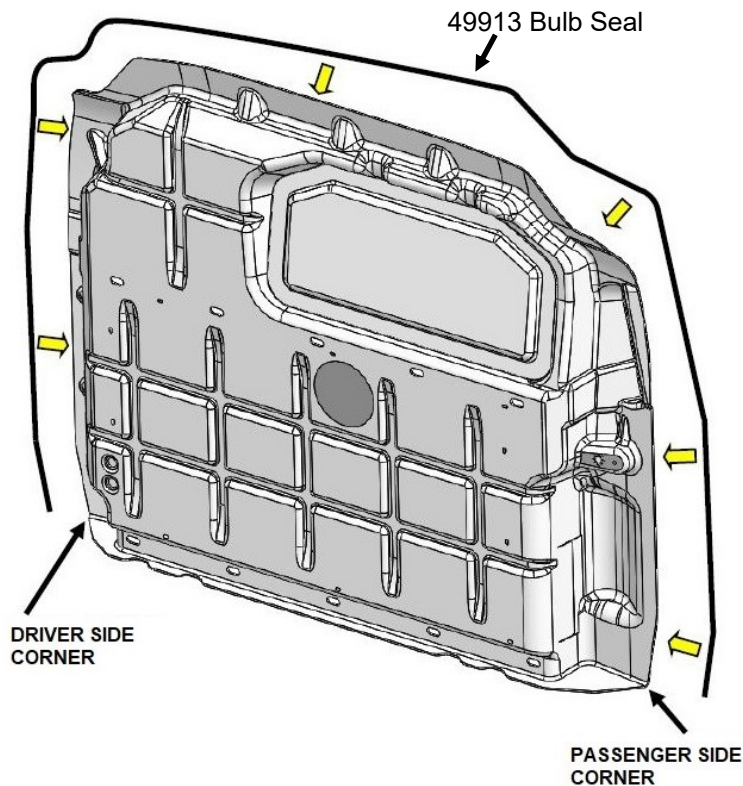
Step 08 Add Spring Clips to Cross Channel with the threaded portion facing towards the Rear of the vehicle in the 4th and 10th slots from the Passenger Side as shown.



Step 09 Attach Accessory Mount Channels as shown.

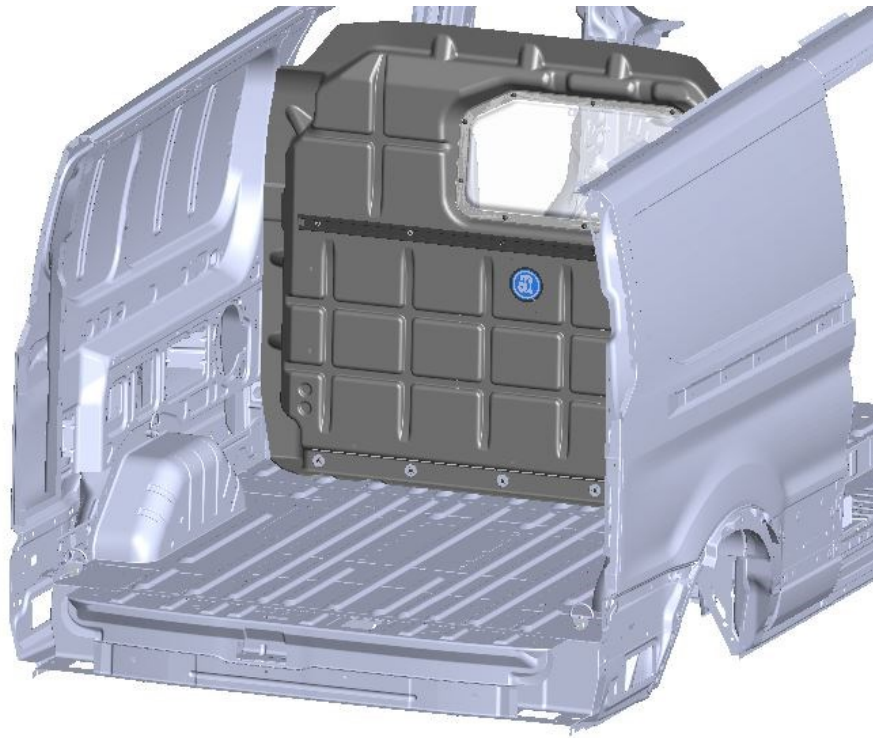


Step 10 Attach Bulb Seal to Partition panel as shown.

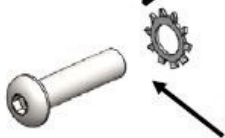
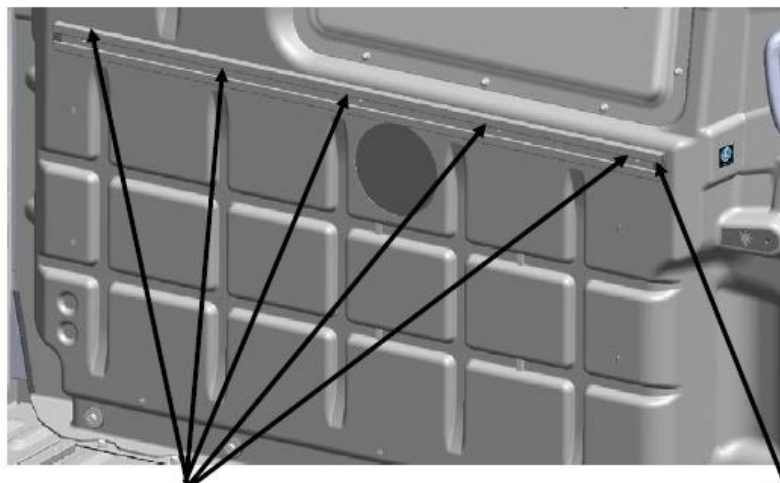


Bulb Seal to Face Towards the Front Of the Vehicle.

Step 11 Place Panel against the Mounting Hardware. You will need to do this through The rear doors.



Step 12 Insert a Plastic end cap into each end of the AD Rail and Attach AD Rail to Partition as Shown Below. Do Not Fully Tighten at this time.

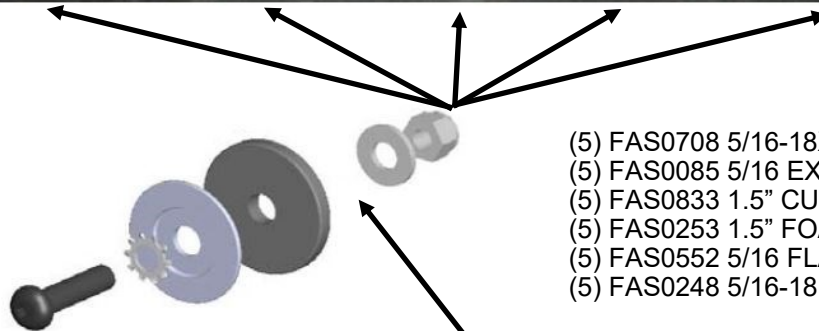


(5) FAS0708 5/16-18X1.25 BHCS SCREW
(5) FAS0085 5/16 EXT.LOCK WASHER



(2) 36496-0 END CAP

Step 13 Attach Partition Panel to Footer Bracket as shown.



- (5) FAS0708 5/16-18X1.25 BHCS SCREW
- (5) FAS0085 5/16 EXT.LOCK WASHER
- (5) FAS0833 1.5" CUPPED WASHER
- (5) FAS0253 1.5" FOAM WASHER
- (5) FAS0552 5/16 FLAT WASHER
- (5) FAS0248 5/16-18 LOCKNUT

Partition Panel and Footer Bracket are
Between the Foam Washer and the Flat Washer

Step 14 Tighten all Fasteners

**DOUBLE CHECK ALL FASTENERS LOCATIONS TO BE SURE THAT ALL
FASTENERS ARE TIGHTENED TO SPECIFICATIONS.
YOUR INSTALLATION IS NOW COMPLETE!
STOW THIS COPY IN THE VEHICLE FOR FUTURE REFERENCES!**