

Introduction / Comments:

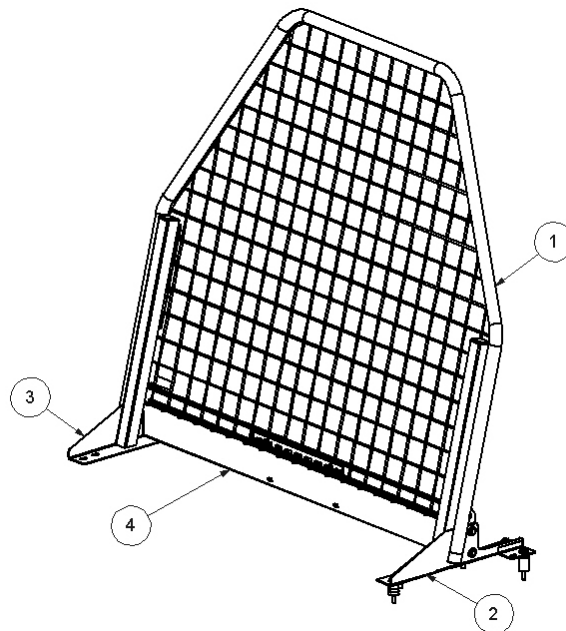
This Partition is designed to fit in the Dodge Ram van with the OEM Floor, as well as our Adrian steel floor kit (BF4305-12) . See page 11 for floor kit instructions. **This partition will also work for 2008-2011 Dodge CVN. For 08' - 11' CVN ref p/n: 35493-0 floor plate for 2011 and older vehicles. See pages 11– 17 for partition only install.**

Note:

It is advised that all fasteners used in this assembly and installation should be checked for tightness at the following intervals: @ 2-weeks and again @ 6-weeks of operation. This preventive maintenance step must be completed to ensure your Partition gives you long service life.

Parts List FOR P2RCV

#	Qty	P/N	Part Description
1	1	41374-G	Partition, Dodge Ram
2	1	41380-G	Floor mount, street
3	1	41377-G	Floor mount, curb
4	1	414823-G	Partition floor closeout panel
5	1	HDWP2RCV	Hardware kit for P2RCV



P2RCV FIXED PARTITION DODGE RAM

- PRECAUTIONS -



CAUTION



**THE USE OF AIR IMPACT TOOLS CAN
OVER-TORQUE FASTENERS AND
CAUSE FASTENER FAILURE!**



CAUTION



**ALL INSTALLATION HOLES SHOULD BE SEALED
WITH SILICON OR BUTYL SEALANT TO PREVENT
EXHAUST FUMES FROM ENTERING THE VEHICLE!**



DANGER



**INSPECT FOR FUEL TANK, FUEL LINES, BRAKE LINES, HIGH
VOLTAGE BATTERIES AND ELECTRICAL LINES PRIOR TO
DRILLING TO AVOID DAMAGING CRITICAL VEHICLE SYSTEMS
OR INJURY TO INSTALLER DURING INSTALLATION PROCESS!**



CAUTION



**TO AVOID DAMAGING THE VEHICLE ALWAYS
USE DRILL STOPS WHEN DRILLING ANY IN-
STALLATION HOLES!**



- IMPORTANT WARRANTY REQUIREMENTS -

1. SUBSTITUTING ADRIAN STEEL SPECIFIED FASTENERS FOR ASSEMBLY AND/OR INSTALLATION WILL VOID YOUR PRODUCT WARRANTY.
2. ALL HOLES DRILLED INTO VEHICLE SHOULD HAVE THE RAW METAL EDGES SEALED WITH A SELF-ETCHING PRIMER TO RESIST CORROSION AND POTENTIAL FASTENER POINT FAILURE.
3. ALL FASTENERS USED IN THE INSTALLATION OF THIS PRODUCT SHOULD BE TIGHTENED TO THE TORQUE(S) SPECIFIED IN THESE INSTRUCTIONS.
4. THESE INSTRUCTIONS SHOULD BE KEPT WITH THE VEHICLE.

THE BASIC TOOLS NEEDED FOR MOST INSTALLATIONS



DRILL



DRILL BIT WITH
STOP



RATCHET, SOCKETS
AND/OR WRENCHES



SCREWDRIVERS



MEASURING TAPE

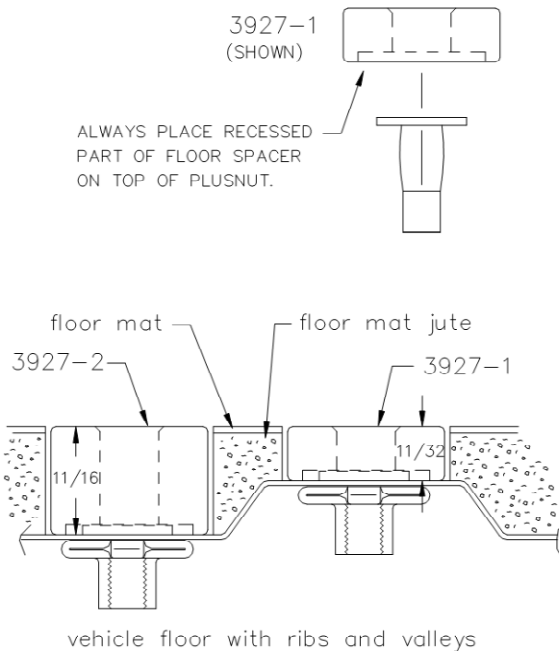
ADDITIONAL TOOLS MAY BE NEEDED FOR THIS INSTALLATION AND THEY WILL BE IDENTIFIED IN THE STEPS THAT FOLLOW.

If your vehicle contains carpet or a rubber floor mat you will need to prepare the mounting location. Position the product to be installed into the vehicle and once you are satisfied with the mounting locations, mark the mounting locations. Using a 1-3/16" diameter carpet cutter (P/N: 31183-0). Select the appropriate floor spacers as shown in the illustration. Set those aside for use later into the installation process.

Using the correct drill bit size for the selected plusnut, drill the mounting holes in the vehicle sheet metal to prepare for installing the plusnuts.

If you are thru-bolting at any of the locations simply drill a hole that is 1/16" larger than the bolt size(s) for those locations.

Once you have drilled the holes into the vehicle, the raw metal edges should be sealed using a self-etching primer to resist corrosion and potential fastener point failure.



A PLUSNUT (RIVNUT) SETTING TOOL IS REQUIRED FOR PLUSNUT (RIVNUT) INSTALLATION AND IS SUPPLIED WITH THIS KIT. OR USE AN AIR POWERED PLUSNUT SETTING GUN.

1/4-20UNC Plusnut (FAS0052) Use 3/8" dia. drill w/stop

FAS0080 SCREW, HXHD, 1/4-20UNCx2.00", G8

FAS0067 WASHER, FLAT, 1/4"ID

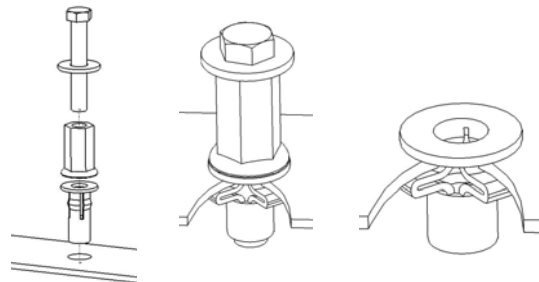
22200-0 PLUSNUT TOOL

5/16-18UNC Plusnut (FAS0091) Use 1/2" dia. drill w/stop

FAS0095 SCREW, HXHD, 5/16-18UNCx2.00", G8

FAS0086 WASHER, FLAT, 5/16"ID

22200-0 PLUSNUT TOOL

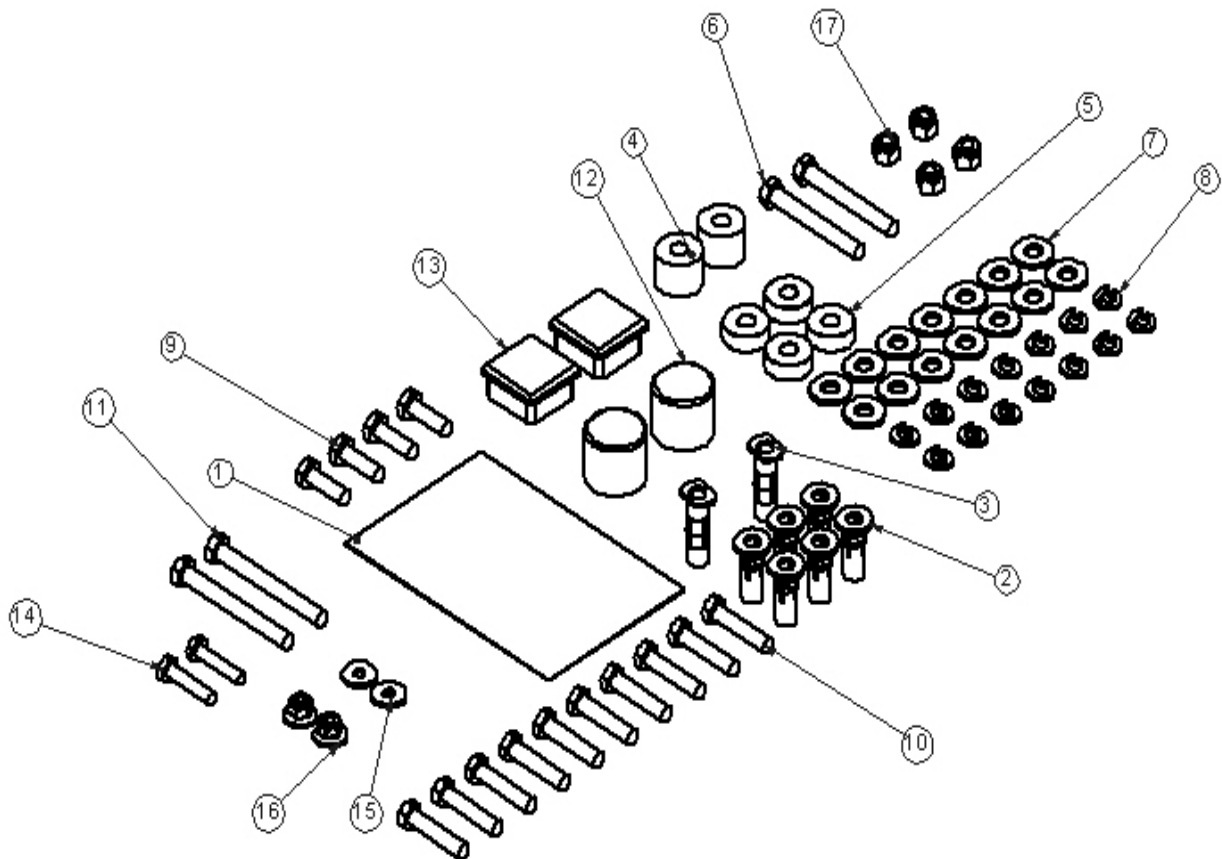


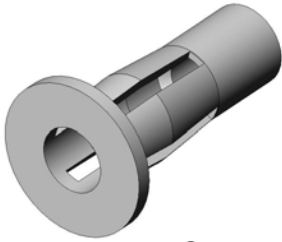
Place barrel of the plusnut body in sheet metal thru hole until flange is flush with sheet metal.

Using a 9/16" combination wrench of plusnut tool body and a second hand wrench, ratchet, or air tool, rotate the hex bolt head CW to draw plus nut flanges up (set the plusnut).

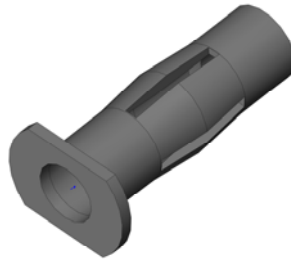
Installation and/or Assembly Fasteners
(ref: BAGP2RCV)

Item	Qty	P/N	Part Description
1	1	BAG0406	4 x 6 mil bag
2	6	FAS0091	Plusnut, 5/16"
3	2	FAS0626	Plusnut, 5/16" long
4	2	03927-2	Tall floor spacer
5	4	03927-1	Short floor spacer
6	2	FAS0094	Screw, Hex hd, 5/16-18 x 2.5, ZN
7	14	FAS0086	Washer, Flat, 5/16, ZN
8	14	FAS0098	Washer, lock, 5/16, ZN
9	4	FAS0082	Screw, Hex hd, 5/16-18 x 1.00, ZN
10	10	FAS0092	Screw, Hex hd, 5/16-18 x 1.50, ZN
11	2	FAS0524	Screw, Hex hd, 5/16-18 x 3.0, ZN
12	2	35483-0	Vinyl cap
13	2	28902-0	Square tube plug
14	2	FAS0073	Screw, Hex hd, 1/4-20 x 1.25
15	2	FAS0067	Washer, flat, 1/4
16	2	FAS0055	Nut, Hex flange, Nylock, 1/4-20
17	4	FAS0090	Nut, Nylon Insert Lock, 5/16-18





FAS0091



FAS0626



03927-2



03927-1



FAS0086



FAS0098



FAS0094



FAS0082



FAS0092



35483-0



28902-0



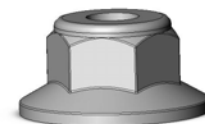
FAS0524



FAS0073



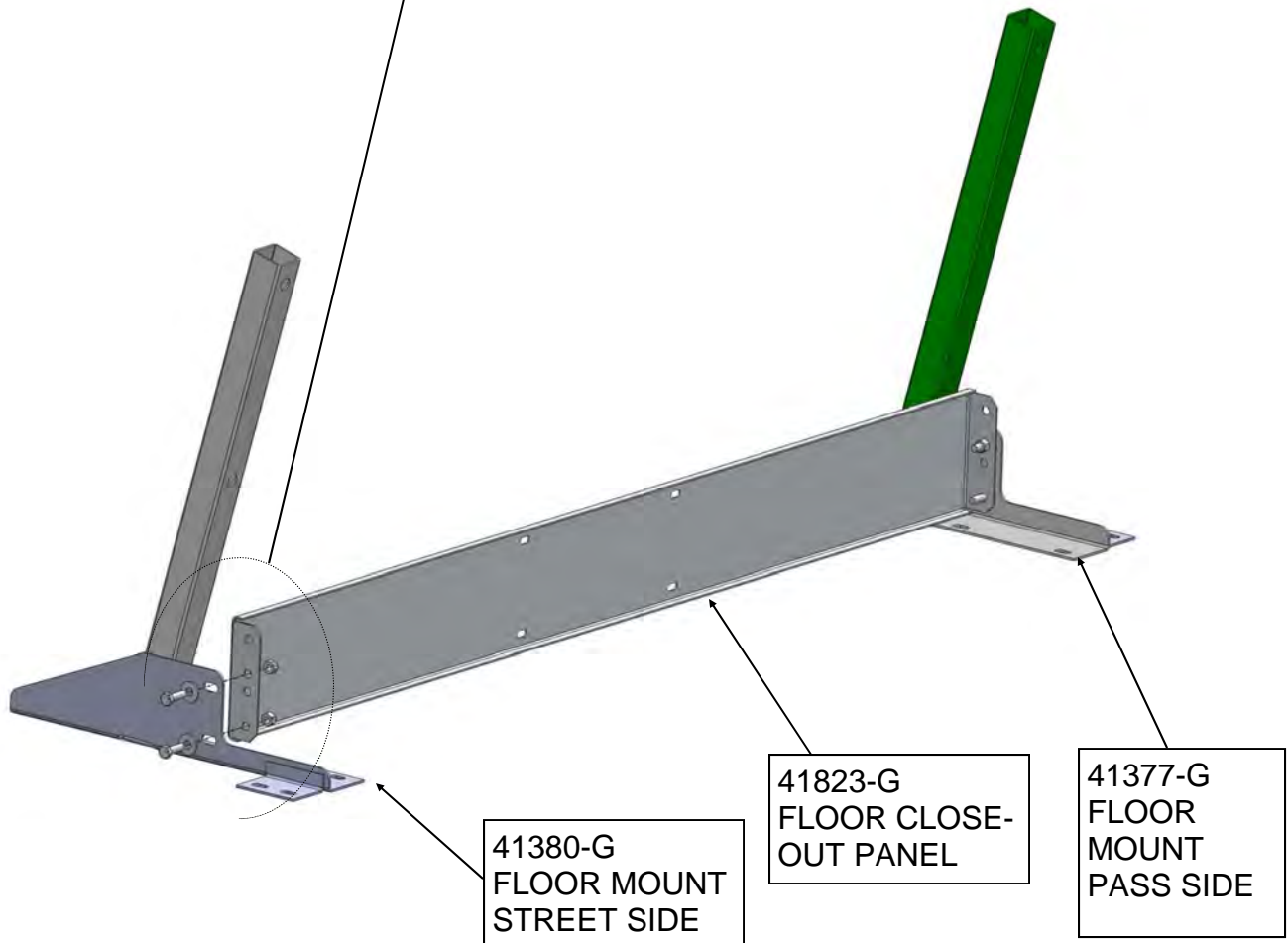
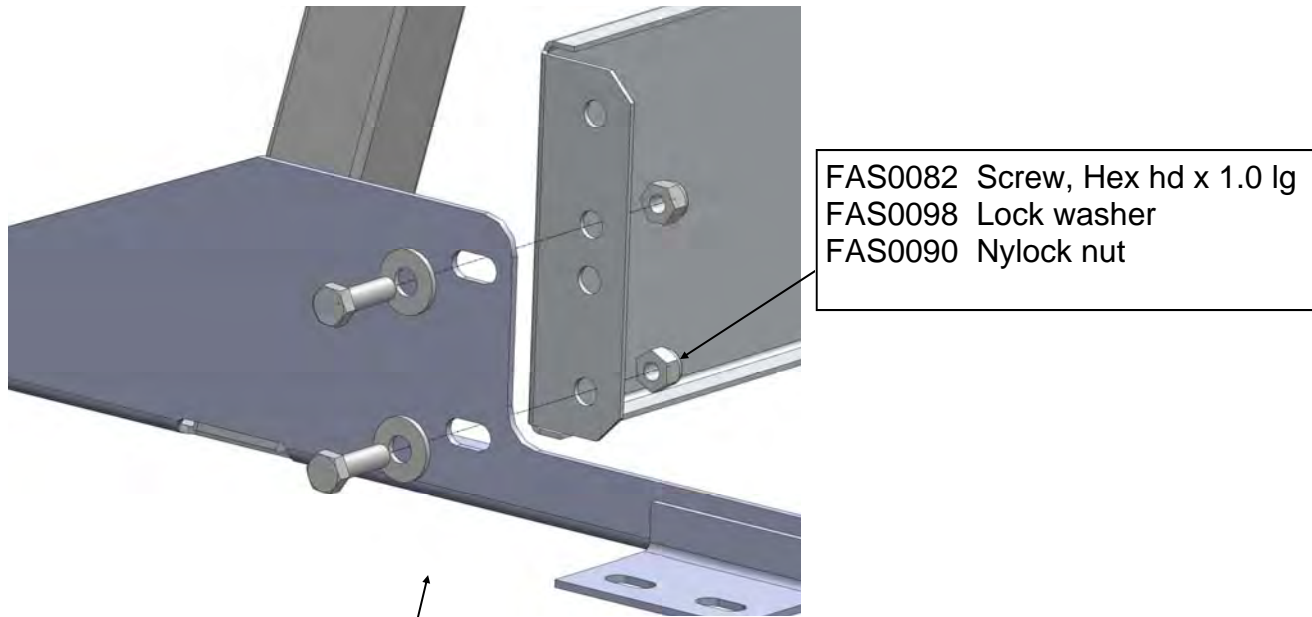
FAS0067



FAS0055

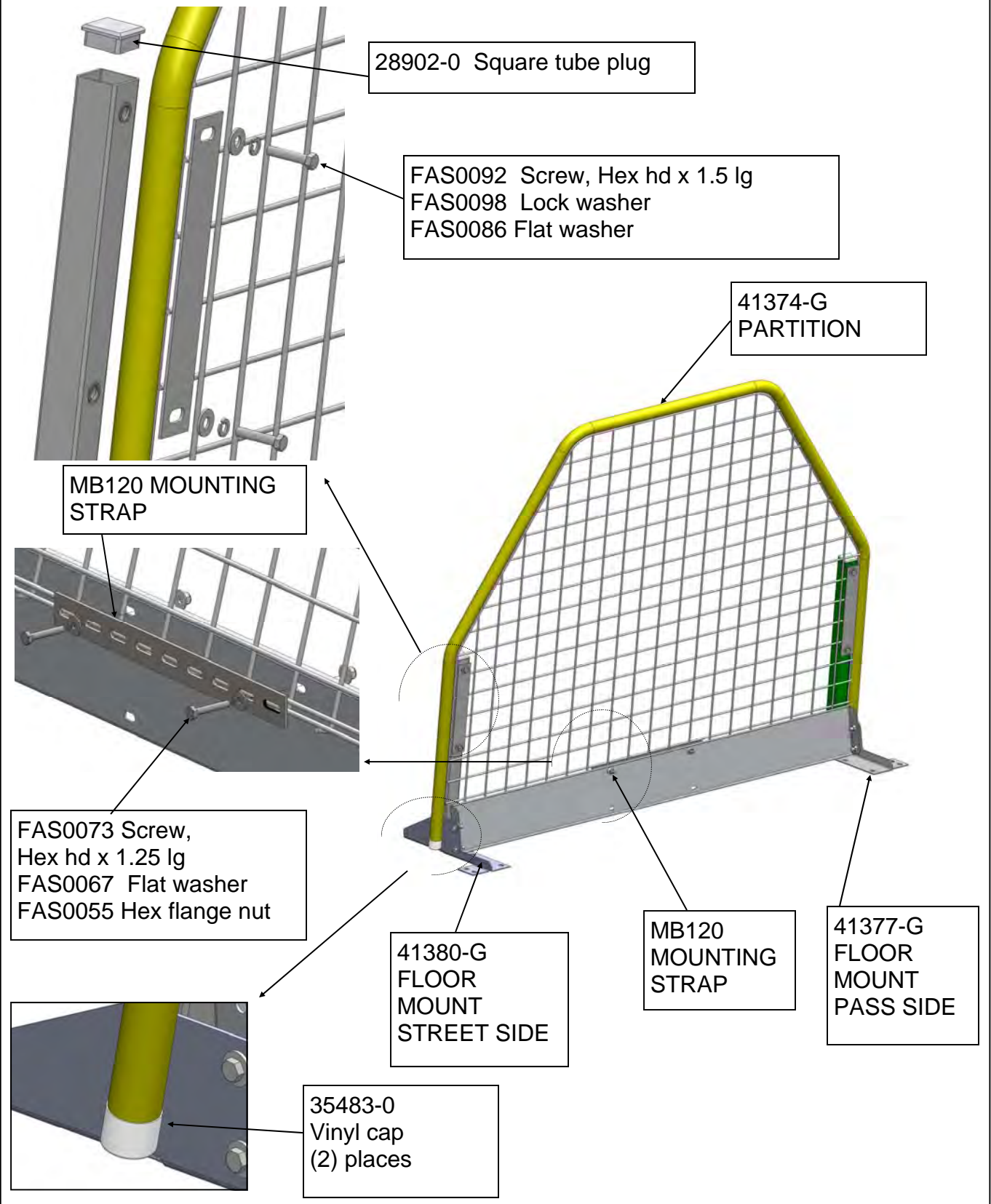
Step 01A

Assemble floor closeout panel to mounting feet .



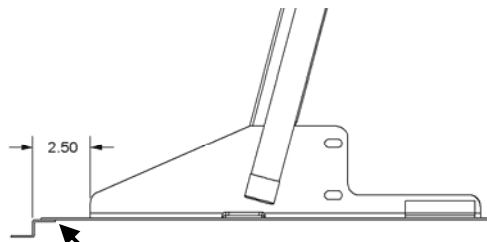
Step 01A

Assemble Partition to mounting feet **Do not fully tighten at this time.**

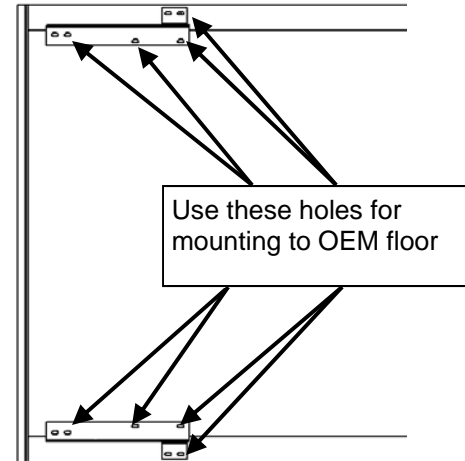


Step 02A

Carefully place the assembled partition on the OEM floor, Center the partition and locate the front feet as shown. Transfer the mounting hole locations.



OEM Load Floor
Front edge is under the
front seats

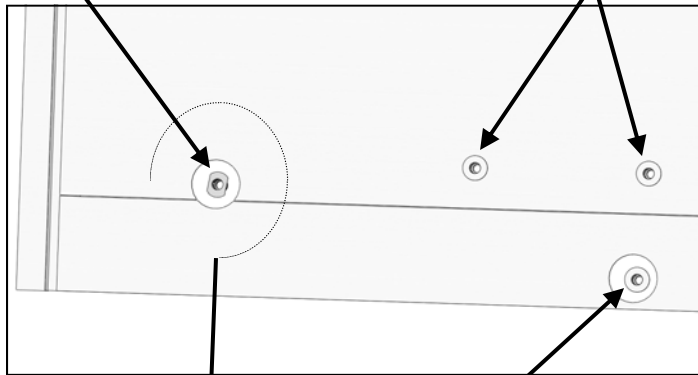


Use these holes for
mounting to OEM floor

FAS0626 Extended Plusnut
in Vehicle floor

Plusnuts in OEM floor

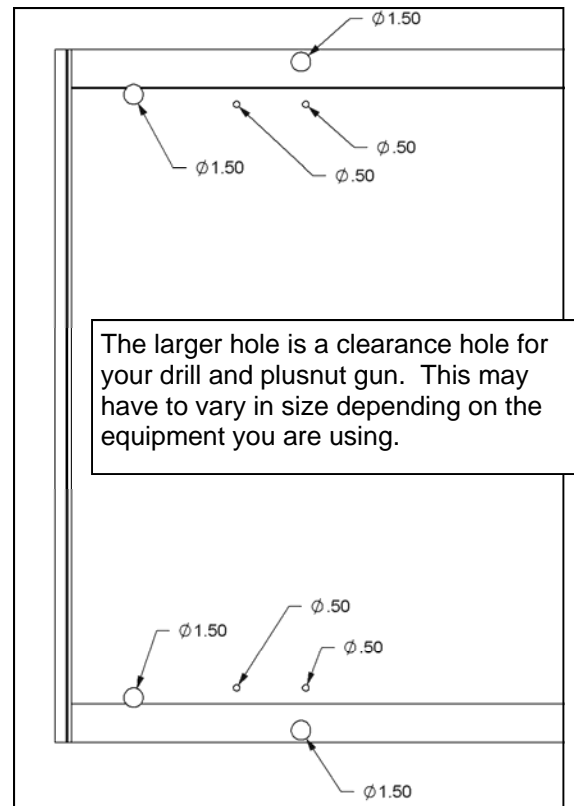
Transfer hole locations to
the vehicle Load floor



FAS0091 Plusnut
in Vehicle floor



Showing installed Plusnut with the
OEM load floor removed

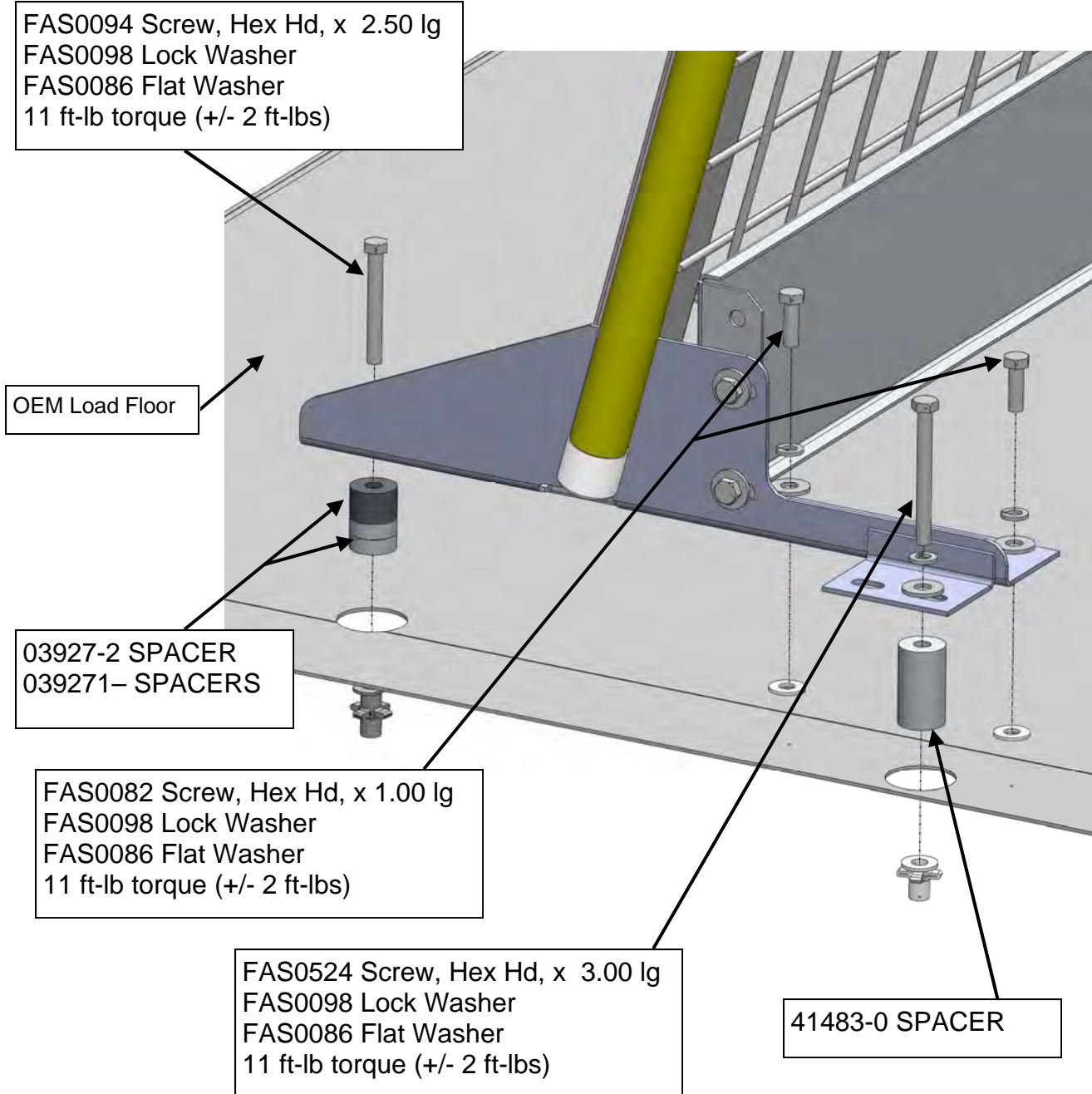


The larger hole is a clearance hole for
your drill and plusnut gun. This may
have to vary in size depending on the
equipment you are using.

Transfer hole locations to the vehicle floor

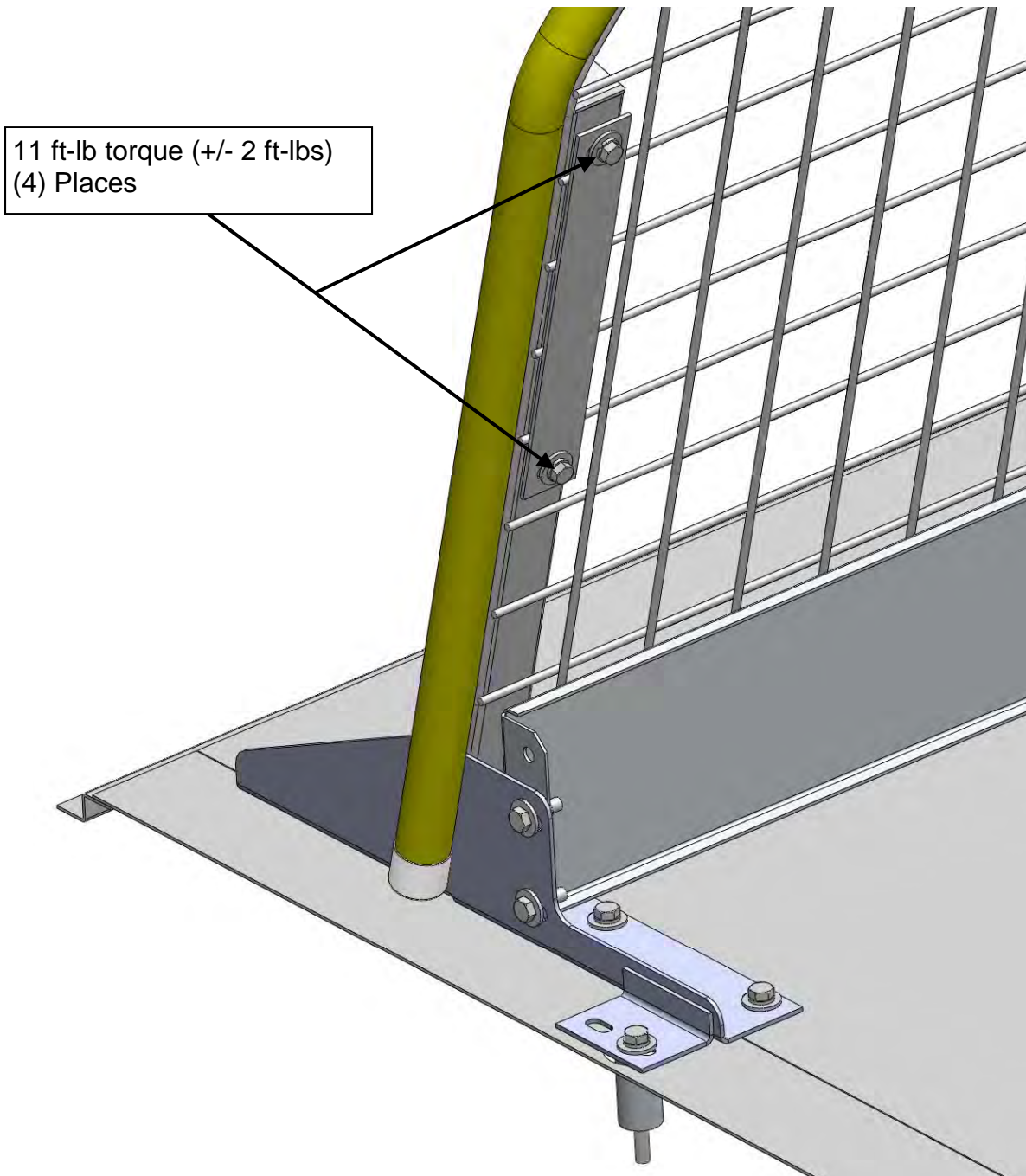
Step 03A

Place partition back in vehicle and install



Step 04A

From step 01, Finish installing the partition to mounting feet.



**DOUBLE CHECK ALL FASTENERS LOCATIONS TO BE SURE THAT ALL
FASTENERS ARE TIGHTENED TO SPECIFICATIONS.
YOUR INSTALLATION IS NOW COMPLETE!
STOW THIS COPY IN THE VEHICLE FOR FUTURE REFERENCES!**

Introduction / Comments:

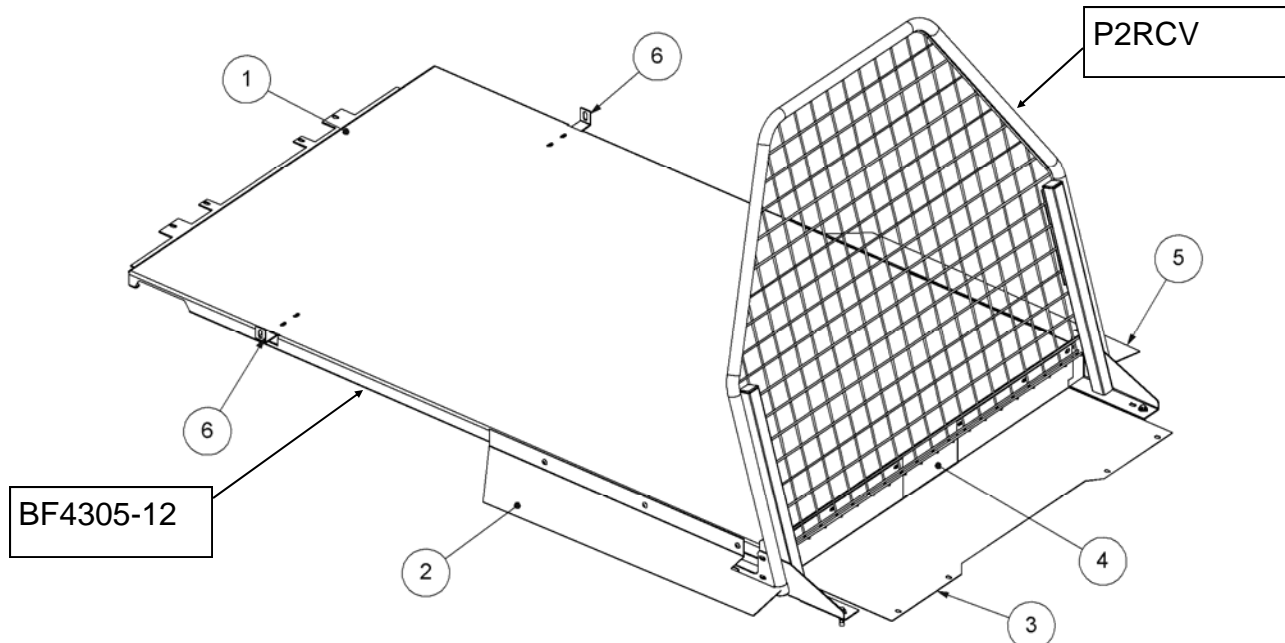
This Partition and floor plate kit for the Dodge Ram van are ordered separately. P2RCV for the partition and BF4305-12 for the floor plate kit. You will have an extra part with the partition kit that will not be used, discard the 41823-G Floor closeout panel. **For 2008 – 2011 CVN, ref pages 11-17 for partition only install. For floor plate kit ref /n: 35493-0.** You will have an extra part with the partition kit that will not be used, discard the 41823-G Floor closeout panel.

Note:

It is advised that all fasteners used in this assembly and installation should be checked for tightness at the following intervals: @ 2-weeks and again @ 6-weeks of operation. This preventive maintenance step must be completed to ensure your Partition gives you long service life.

Parts List for BF4305-12

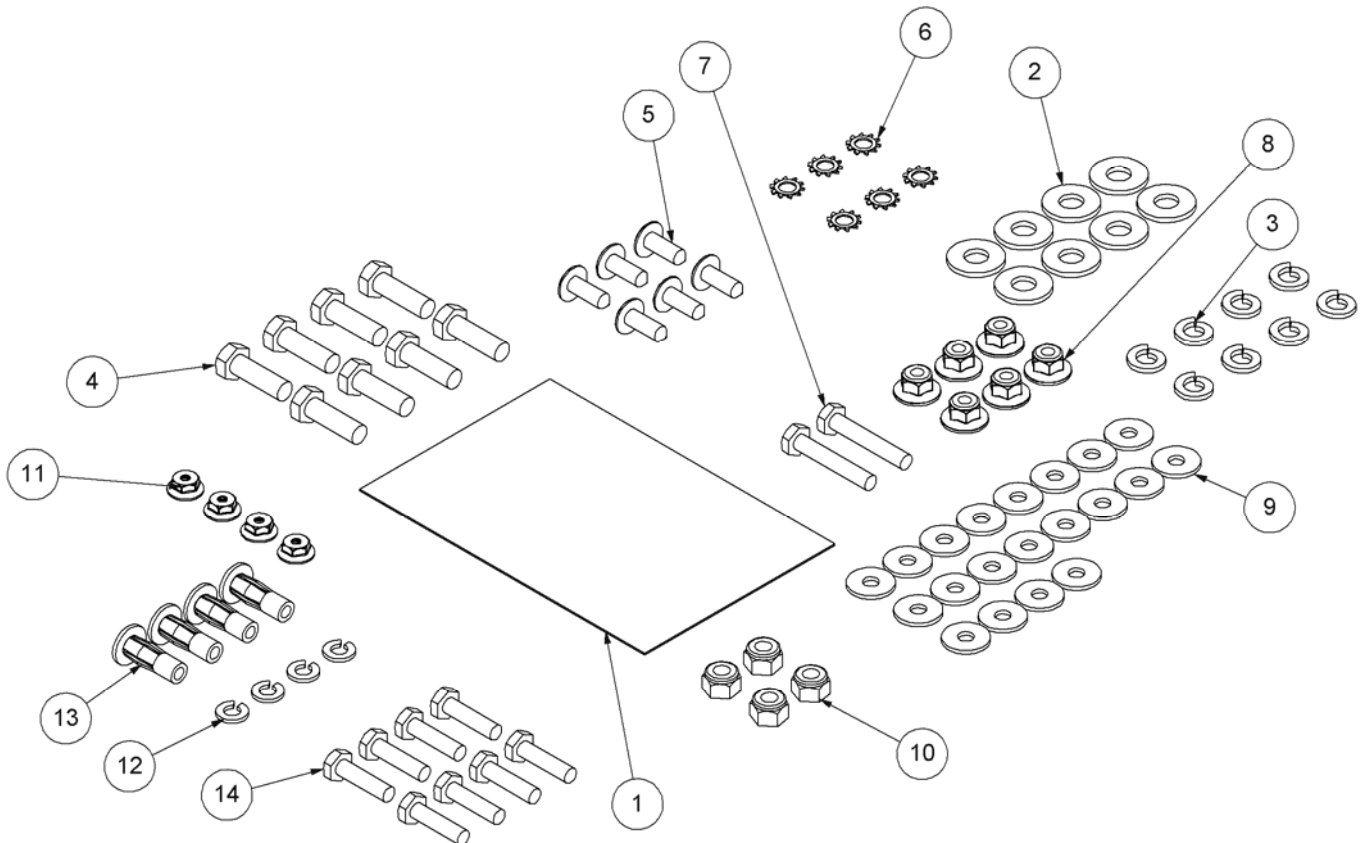
#	Qty	P/N	Part Description
1	1	41560-0	Adrian floor, Dodge Ram
2	1	41474-0	Floor closeout, street
3	1	41472-B	Floor plate, Dodge Ram
4	2	41471-0	Floor Mtg Bracket
5	2	41473-0	Floor closeout, curb
6	1	41566-0	Floor mtg bracket
7	1	BAG41484	Fastener Bag, Floor plate kit



P2RCV FIXED PARTITION WITH ADRIAN FLOOR FOR THE DODGE RAM

Installation and/or Assembly Fasteners
(ref: BAG41484)

Item	Qty	P/N	Part Description
1	1	BAG0406	4 x 6 mil bag
2	8	FAS0086	Washer, Flat, 5/16, ZN
3	8	FAS0098	Washer, lock, 5/16, ZN
4	8	FAS0082	Screw, Hex hd, 5/16-18 x 1.00, ZN
5	6	FAS0041	Screw, truss hd Phillips, tapping
6	6	FAS0066	Washer, lock, ext tooth, 1/4
7	2	FAS0079	Screw, Hex hd, 1/4-20 x 1.50
8	6	FAS0055	Nut, Hex flange, Nylock, 1/4
9	20	FAS0067	Washer, Flat, 1/4
10	4	FAS0090	Nut, Nylon lock, 5/16-18, ZN
11	4	FAS0627	Nut, M5-0.8 speed, hex flange
12	4	FAS0060	Washer, lock, 1/4
13	4	FAS0052	Plusnut, 1/4
14	8	FAS0078	Screw, Hex hd, 1/4-20 x 1.00, ZN





FAS0086



FAS0098



FAS0082



FAS0041



FAS0066



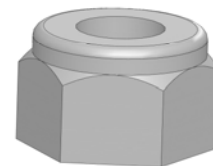
FAS0079



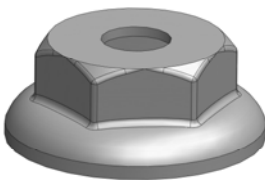
FAS0055



FAS0067



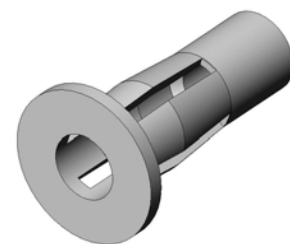
FAS0090



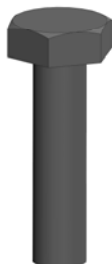
FAS0627



FAS0060



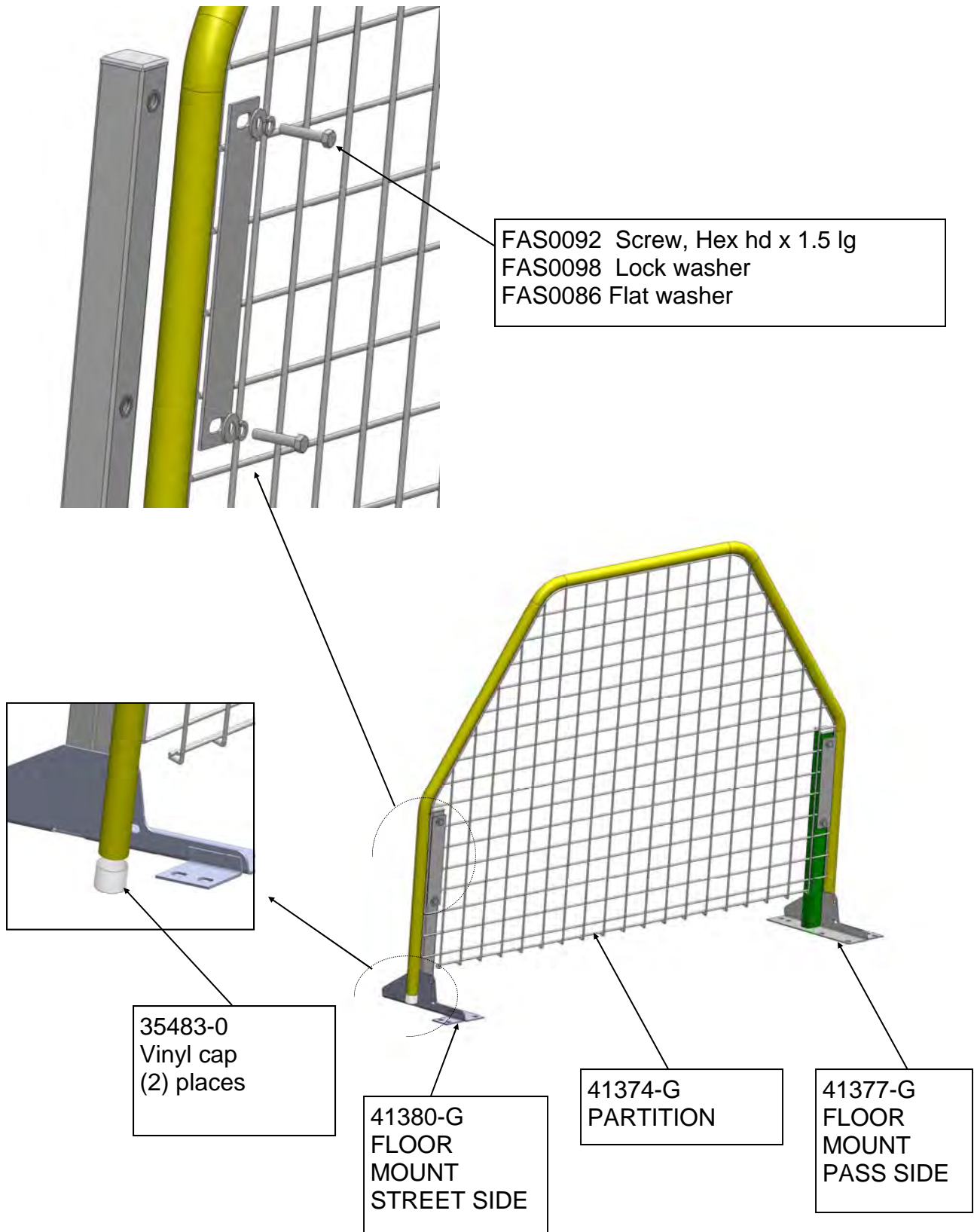
FAS0052



FAS0078

Step 01B—PARTITION ASSEMBLY WITH ADRIAN STEEL FLOOR

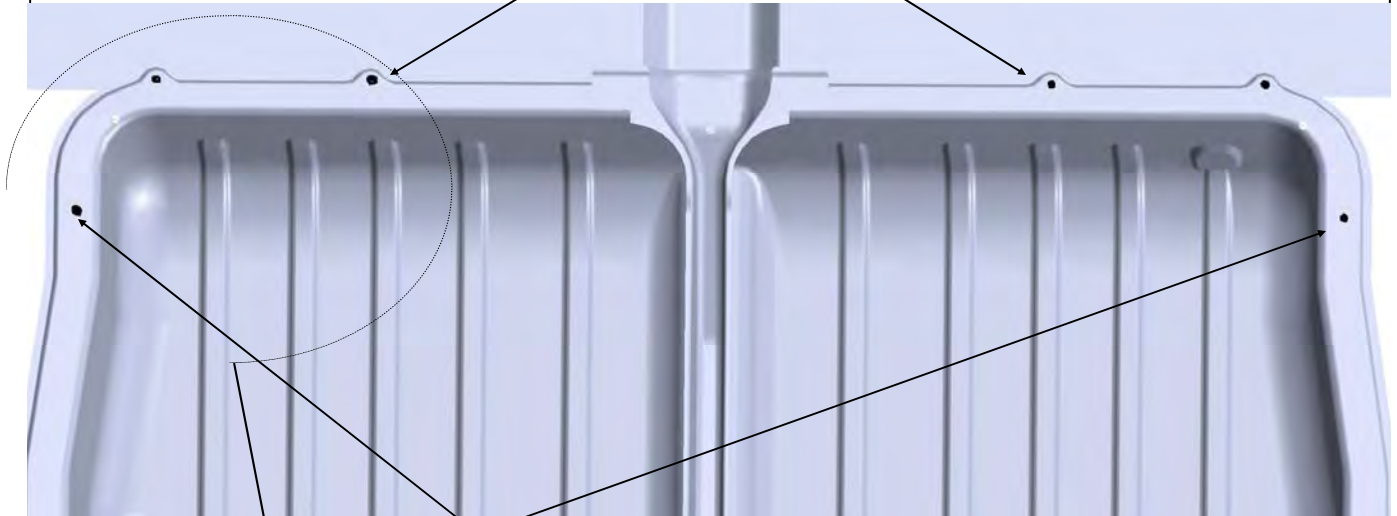
Assemble Partition to mounting feet **Do not fully tighten at this time.**



Step 02B—Installation with using Adrian floor

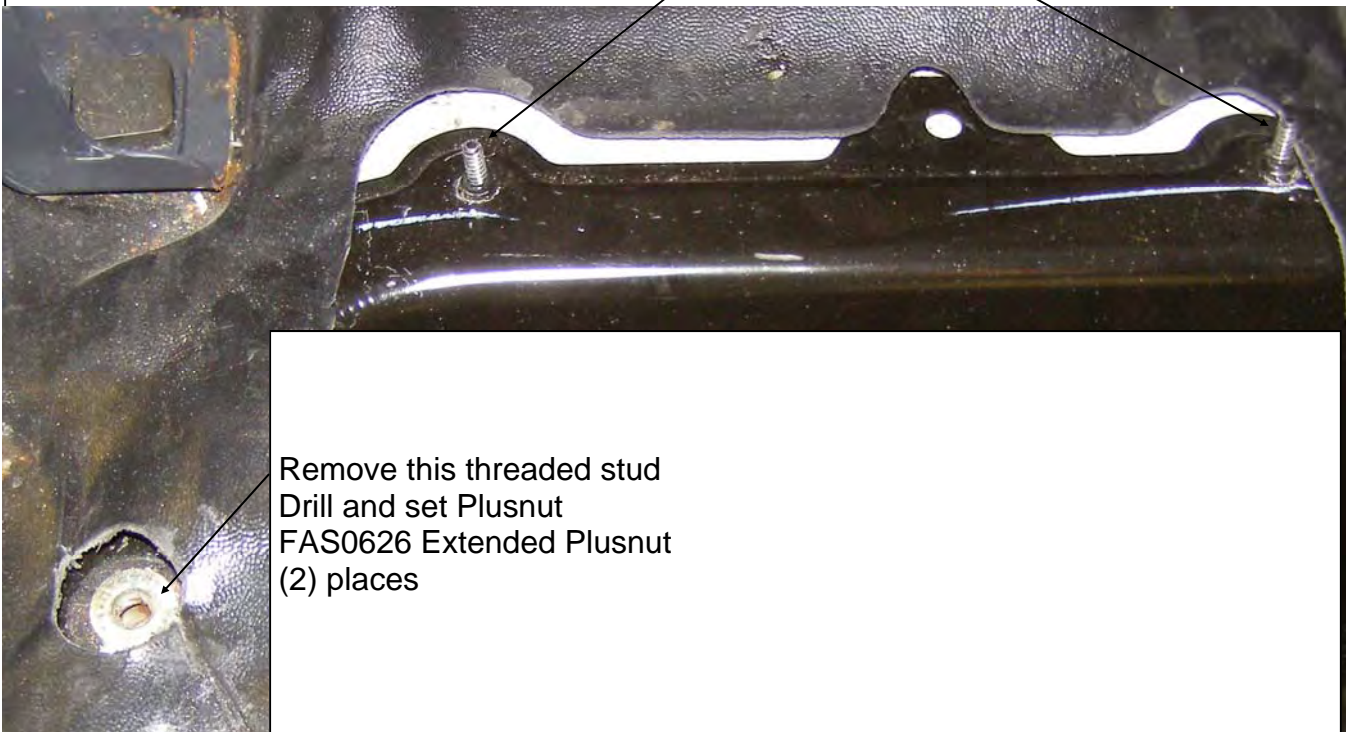
Locate threaded studs and modify.

Under front seats



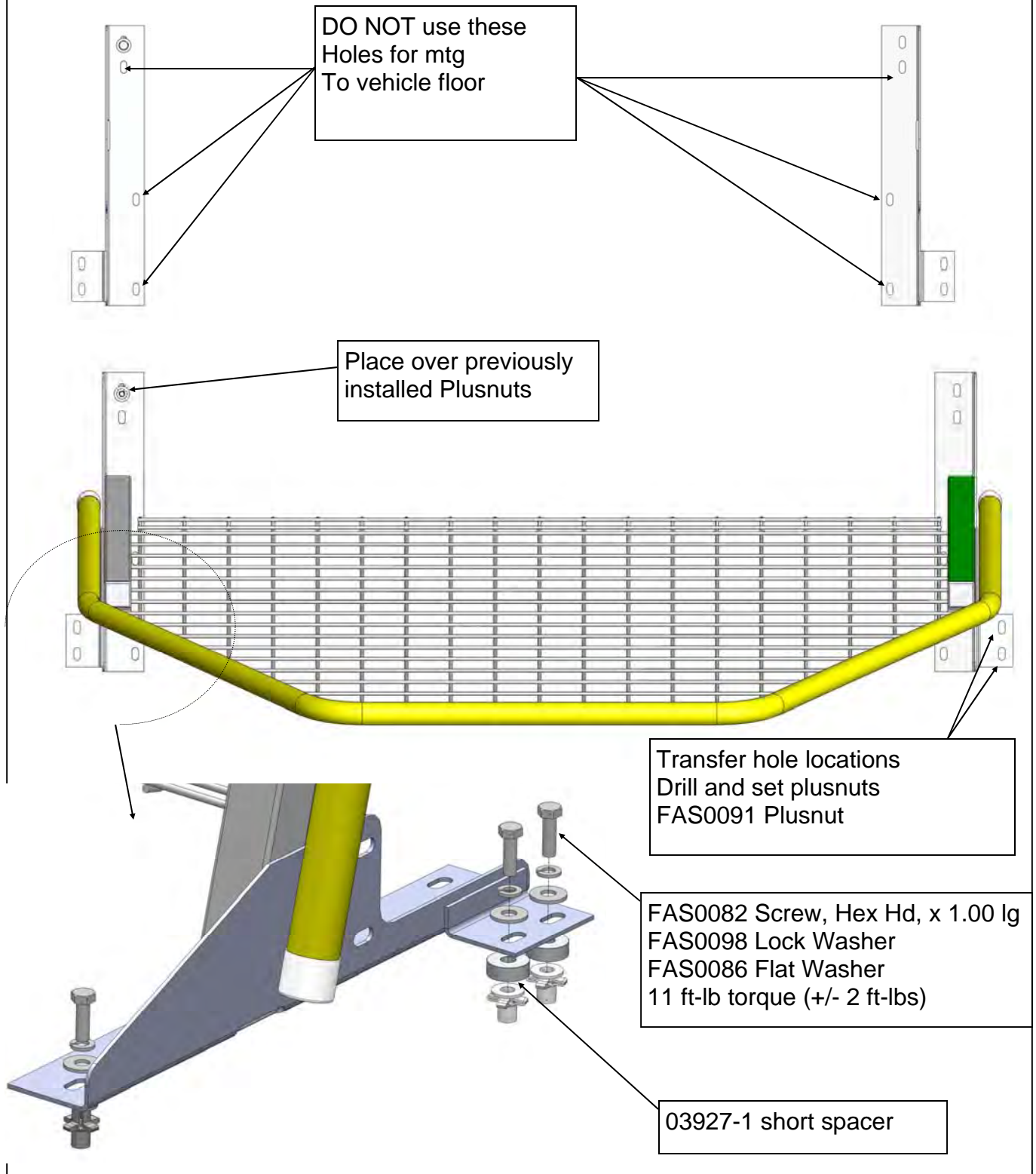
REMOVE ONLY THESE TWO threaded studs, set plusnut (2) places. Finished is shown below

Leave Threaded studs

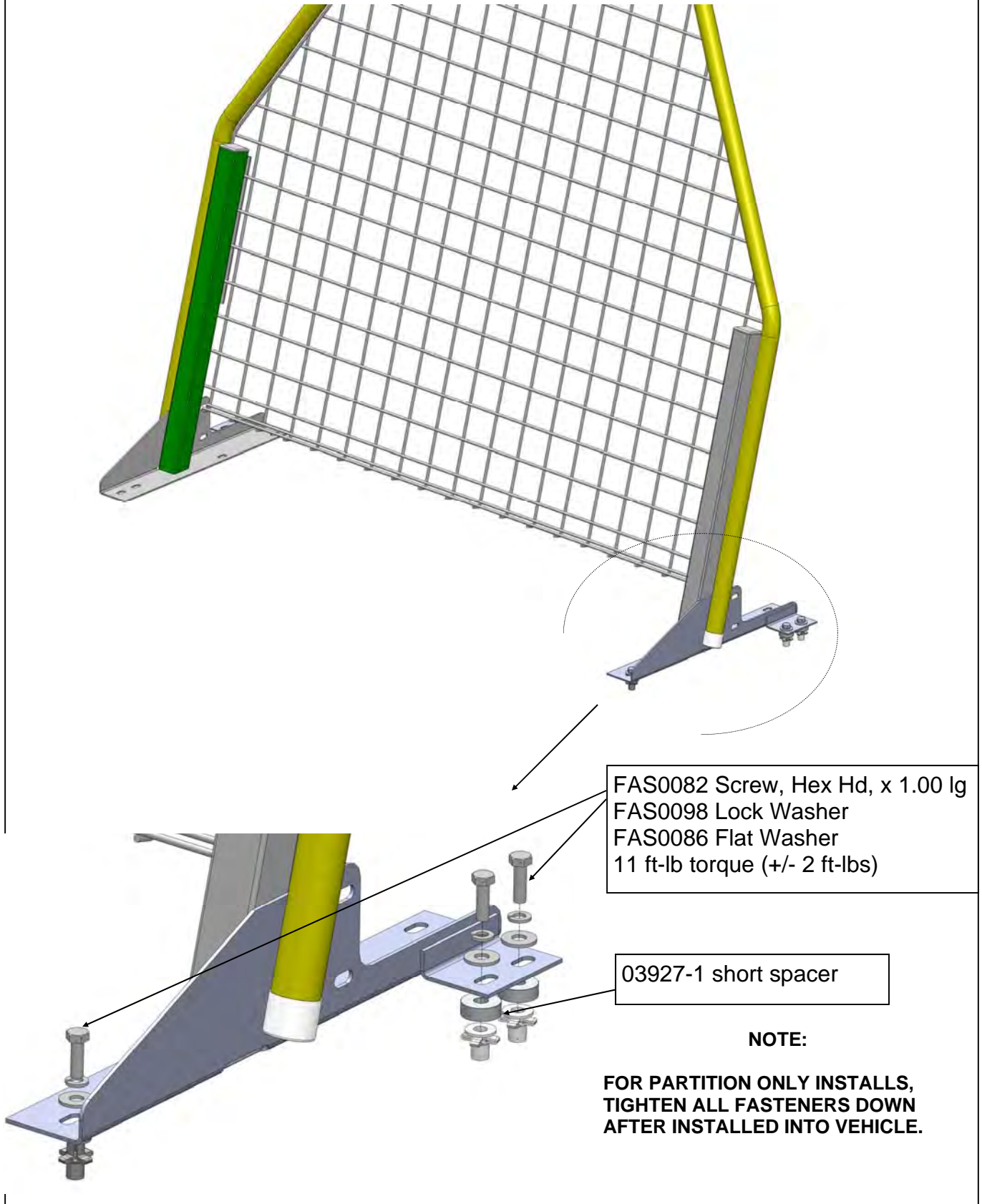


Step 3B—Place assembled partition in the vehicle

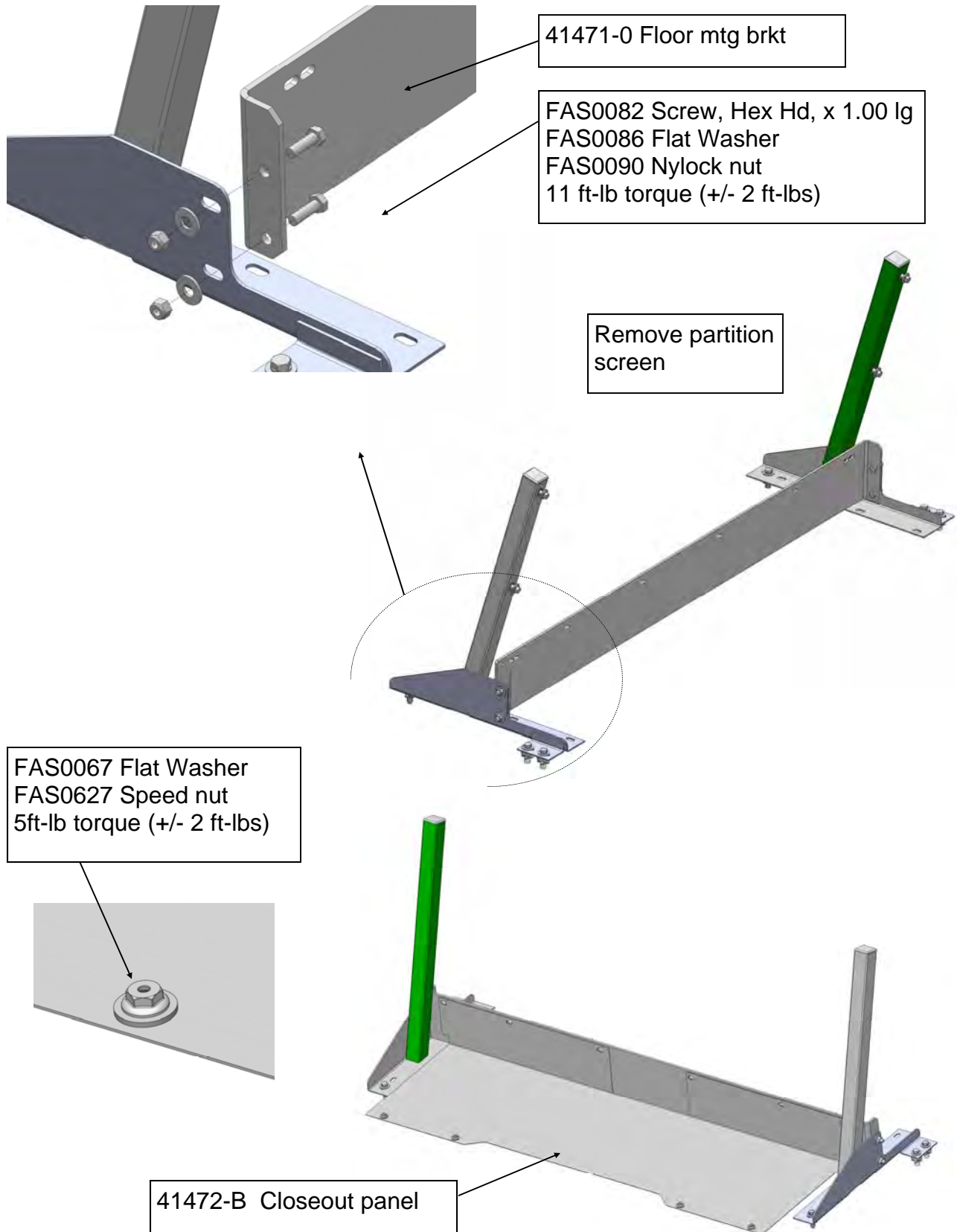
Carefully place the assembled partition in the vehicle, place over the Plusnuts.



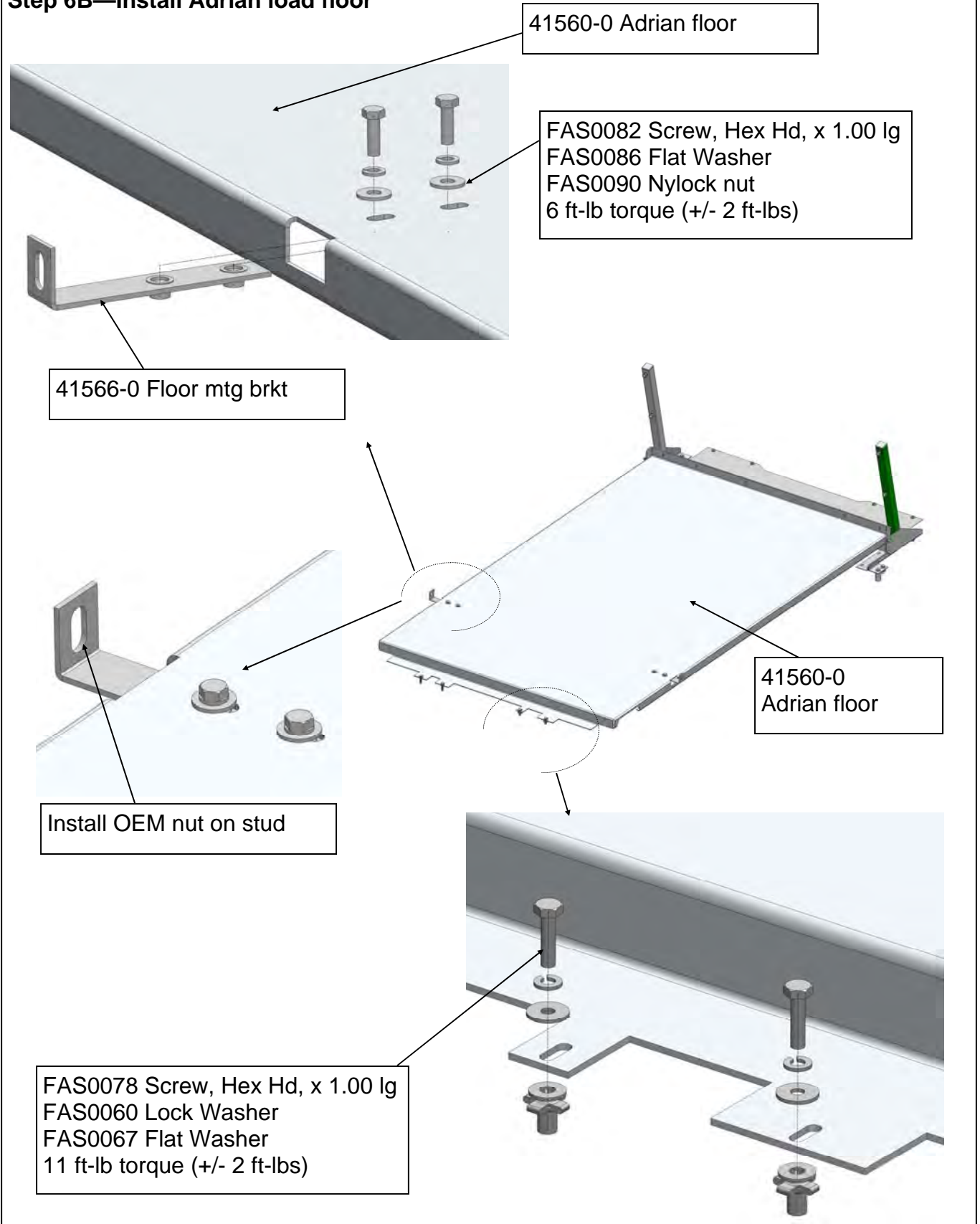
Step 4B—install partition in the vehicle



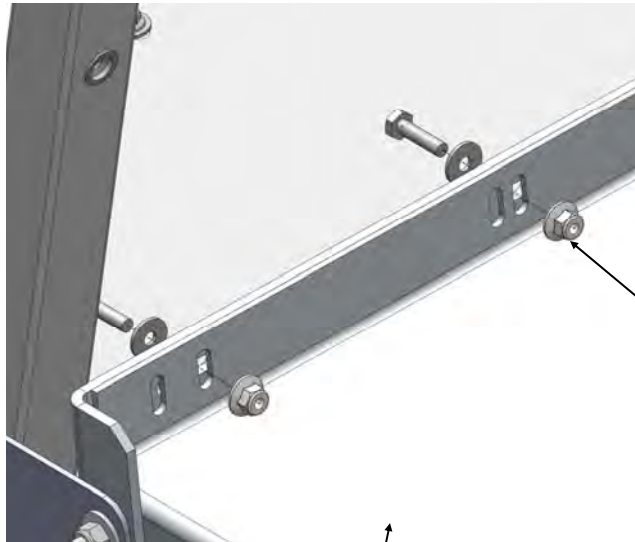
Step 5B—Remove partition screen for floor installation



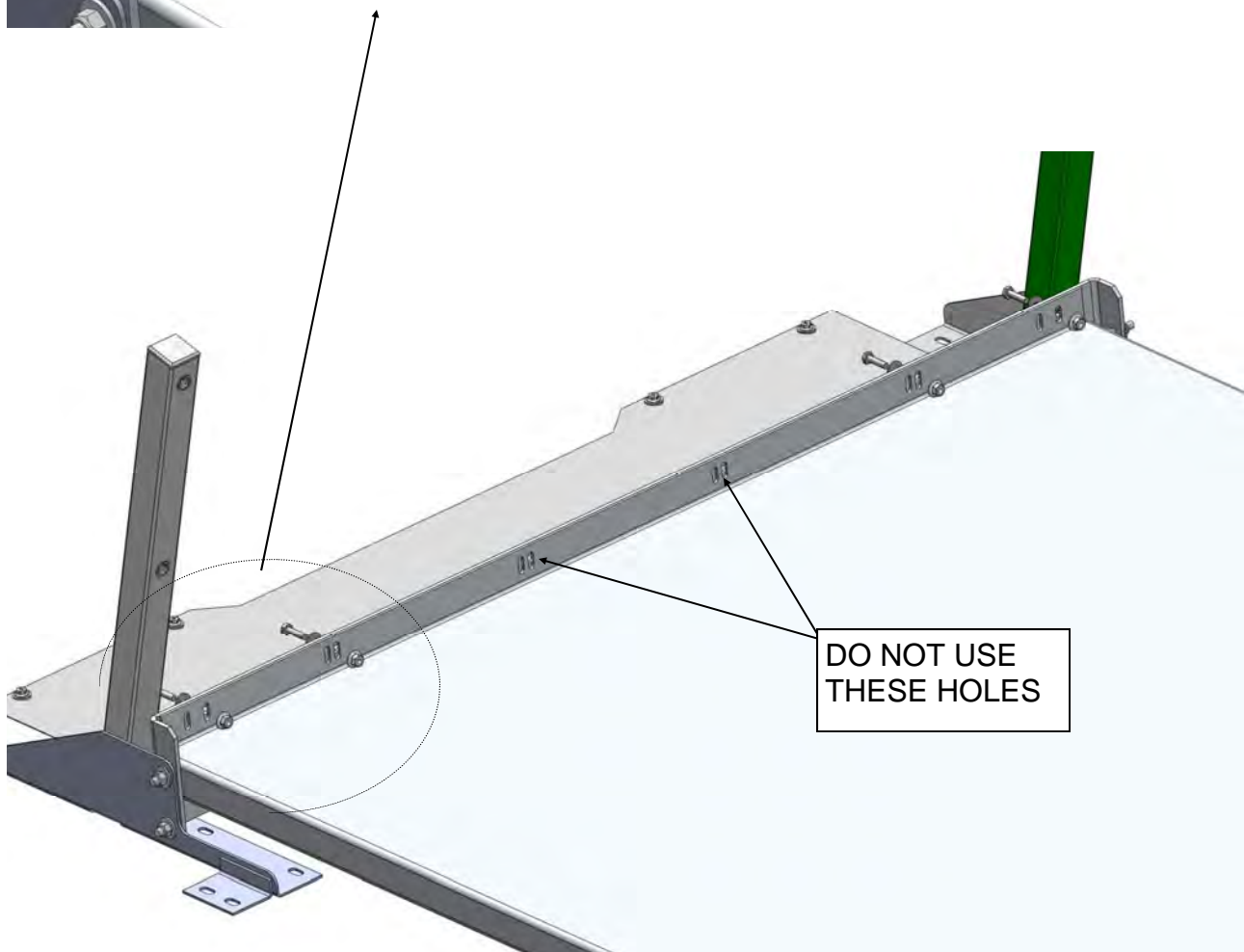
Step 6B—Install Adrian load floor



Step 7B—Install Adrian load floor

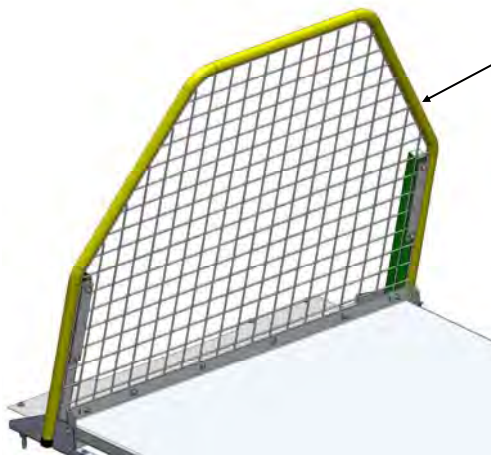


FAS0078 Screw, Hex Hd, x 1.00 lg
FAS0086 Flat Washer
FAS0055 Nylock nut
6 ft-lb torque (+/- 2 ft-lbs)

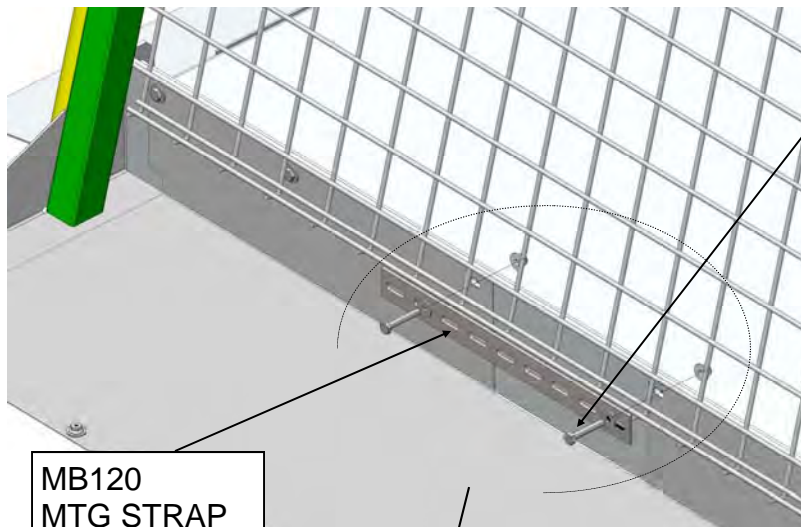


DO NOT USE
THESE HOLES

Step 8B—Install Partition and mtg strap



re-Install partition



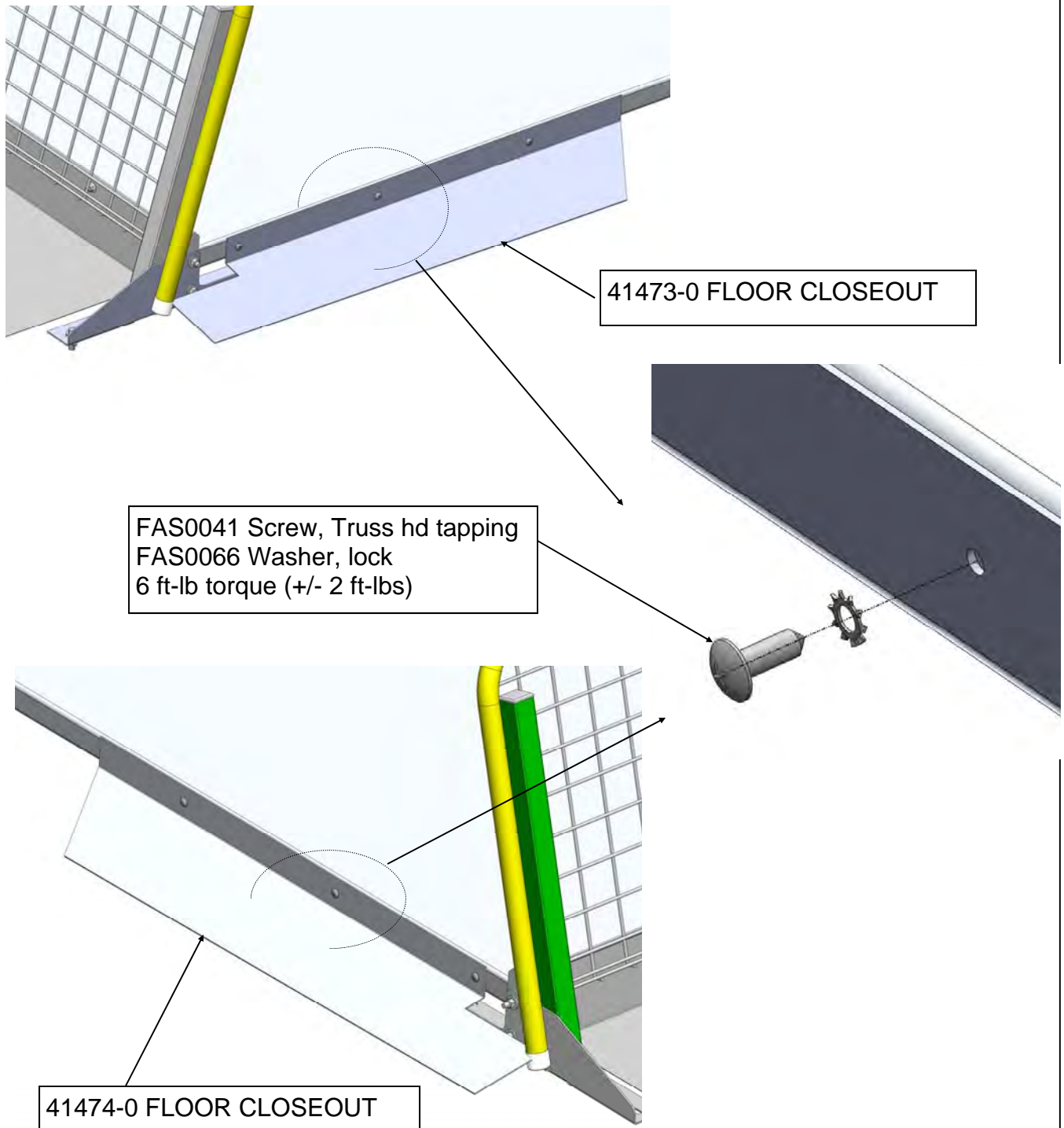
MB120
MTG STRAP

FAS0079 Screw, Hex Hd, x 1.50 lg
FAS0086 Flat Washer
FAS0055 Nylock nut
6 ft-lb torque (+/- 2 ft-lbs)



INSTALLED MB120 MOUNTING STRAP

Step 9B—Install Side closeout panels



**DOUBLE CHECK ALL FASTENERS LOCATIONS TO BE SURE THAT ALL
FASTENERS ARE TIGHTENED TO SPECIFICATIONS.
YOUR INSTALLATION IS NOW COMPLETE!
STOW THIS COPY IN THE VEHICLE FOR FUTURE REFERENCES!**