



PROMASTER CITY P1PMCS15 PARTITION

PRODUCT WEIGHT

52.50 LBS

WIDTH x DEPTH x HEIGHT

55" x 9.25" x 50"

CAPACITY

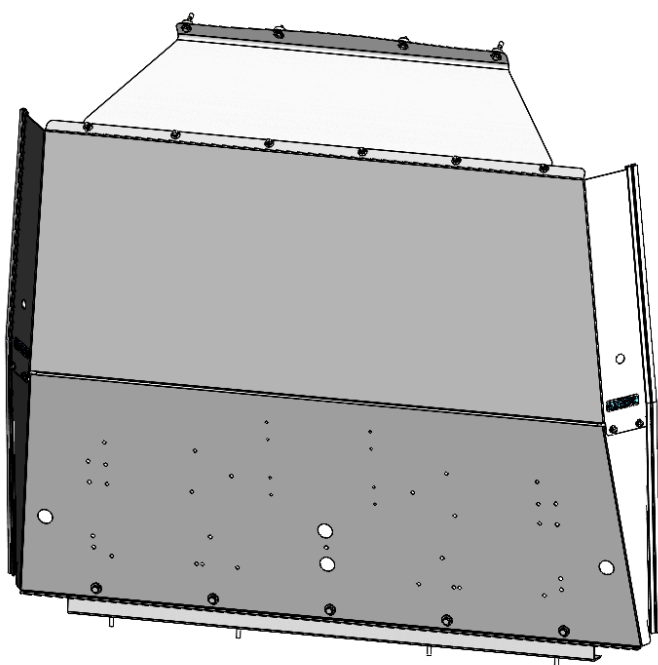
N/A

COLOR

GRAY

CATALOG NUMBER

P1PMCS15



PRODUCT FEATURES

Steel partitions (using appropriate panel kit) for Promaster City standard roof provides a solution for separating the cab area from the cargo area. The steel partition features the use of OEM attachment points for a clean installation.

SEE PAGE 2 FOR APPLICATION NOTES AND ACCESSORIES, OTHER PRODUCTS THAT WORK WITH THIS UNIT.

PAGE 1 of 2

The information contained in this document is the sole property of ADRIAN STEEL COMPANY. ADRIAN STEEL COMPANY retains the right to modify and/or change the product of its design at any time without prior notification.

Accessory Chart

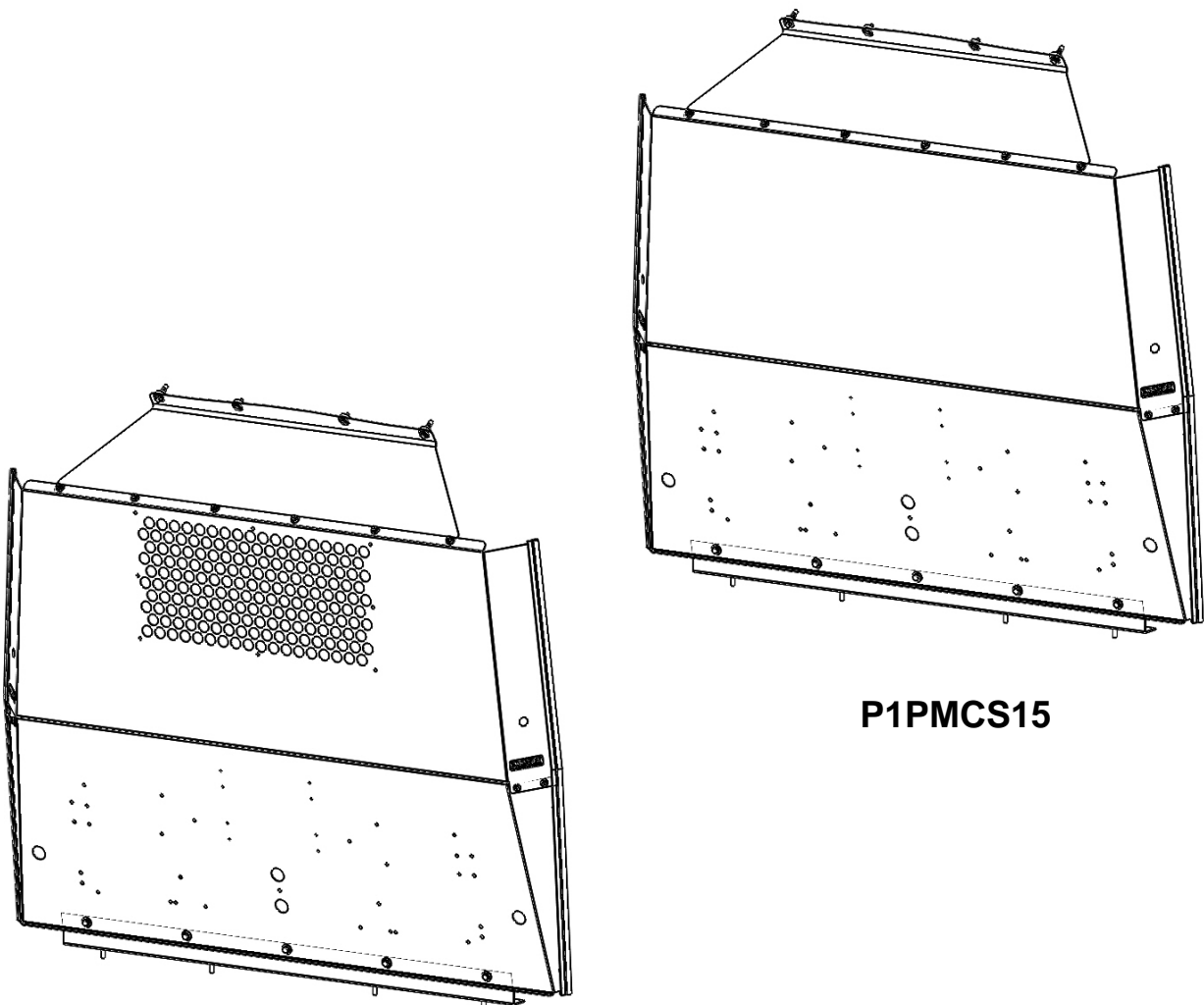
	Cargo Side	Cab Side
	Base Partition BAGRKA1 REQUIRED (1 BAGRKA1 will allow for one accessory to be added)	None available
Available Accessories	-	-
PA7: Reflector kit	X	-
PA8: Fire ext.	X	-
PA9: First aid tray	X	-
UH50: 5" hook	X	-

Introduction / Comments:

These Partitions are designed to fit in your 2015 Promaster City vehicle.

Note:

It is advised that all fasteners used in this assembly and installation should be checked for tightness at the following intervals: @ 2-weeks and again @ 6-weeks of operation. This preventive maintenance step must be completed to ensure your Partition gives you long service life.



P2PMCS15

P1PMCS15

P1PMCS15 and P2PMCS15 FIXED PARTITION, 2015 PROMASTER CITY

- PRECAUTIONS -



CAUTION



**THE USE OF AIR IMPACT TOOLS CAN
OVER-TORQUE FASTENERS AND
CAUSE FASTENER FAILURE!**



CAUTION



**ALL INSTALLATION HOLES SHOULD BE SEALED
WITH SILICON OR BUTYL SEALANT TO PREVENT
EXHAUST FUMES FROM ENTERING THE VEHICLE!**



DANGER



**INSPECT FOR FUEL TANK, FUEL LINES, BRAKE LINES, HIGH
VOLTAGE BATTERIES AND ELECTRICAL LINES PRIOR TO
DRILLING TO AVOID DAMAGING CRITICAL VEHICLE SYSTEMS
OR INJURY TO INSTALLER DURING INSTALLATION PROCESS!**



CAUTION



**TO AVOID DAMAGING THE VEHICLE ALWAYS
USE DRILL STOPS WHEN DRILLING ANY IN-
STALLATION HOLES!**



- IMPORTANT WARRANTY REQUIREMENTS -

1. SUBSTITUTING ADRIAN STEEL SPECIFIED FASTENERS FOR ASSEMBLY AND/OR INSTALLATION WILL VOID YOUR PRODUCT WARRANTY.
2. ALL HOLES DRILLED INTO VEHICLE SHOULD HAVE THE RAW METAL EDGES SEALED WITH A SELF-ETCHING PRIMER TO RESIST CORROSION AND POTENTIAL FASTENER POINT FAILURE.
3. ALL FASTENERS USED IN THE INSTALLATION OF THIS PRODUCT SHOULD BE TIGHTENED TO THE TORQUE(S) SPECIFIED IN THESE INSTRUCTIONS.
4. THESE INSTRUCTIONS SHOULD BE KEPT WITH THE VEHICLE.

THE BASIC TOOLS NEEDED FOR MOST INSTALLATIONS



DRILL



DRILL BIT WITH
STOP



RATCHET, SOCKETS
AND/OR WRENCHES



SCREWDRIVERS



MEASURING TAPE

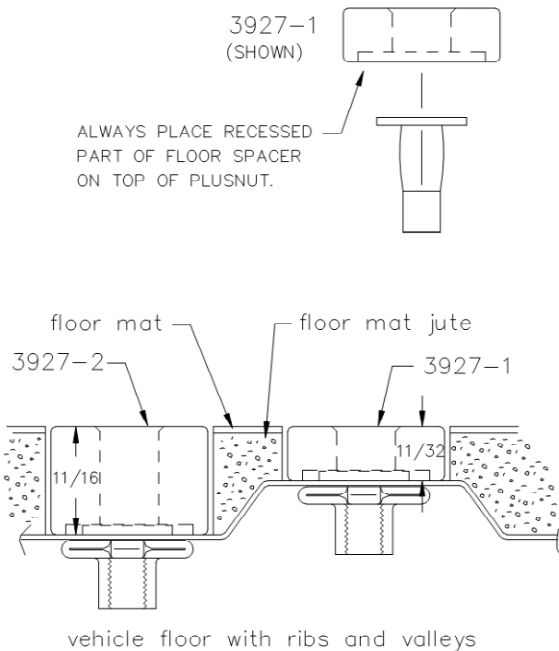
ADDITIONAL TOOLS MAY BE NEEDED FOR THIS INSTALLATION AND THEY WILL BE IDENTIFIED IN THE STEPS THAT FOLLOW.

If your vehicle contains carpet or a rubber floor mat you will need to prepare the mounting location. Position the product to be installed into the vehicle and once you are satisfied with the mounting locations, mark the mounting locations. Using a 1-3/16" diameter carpet cutter (P/N: 31183-0). Select the appropriate floor spacers as shown in the illustration. Set those aside for use later into the installation process.

Using the correct drill bit size for the selected plusnut, drill the mounting holes in the vehicle sheet metal to prepare for installing the plusnuts.

If you are thru-bolting at any of the locations simply drill a hole that is 1/16" larger than the bolt size(s) for those locations.

Once you have drilled the holes into the vehicle, the raw metal edges should be sealed using a self-etching primer to resist corrosion and potential fastener point failure.



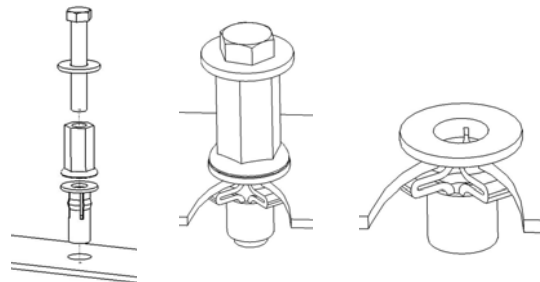
A PLUSNUT (RIVNUT) SETTING TOOL IS REQUIRED FOR PLUSNUT (RIVNUT) INSTALLATION AND IS SUPPLIED WITH THIS KIT. OR USE AN AIR POWERED PLUSNUT SETTING GUN.

1/4-20UNC Plusnut (FAS0052) Use 3/8" dia. drill w/stop

FAS0080 SCREW, HXHD, 1/4-20UNCx2.00", G8
FAS0067 WASHER, FLAT, 1/4"ID
22200-0 PLUSNUT TOOL

5/16-18UNC Plusnut (FAS0091) Use 1/2" dia. drill w/stop

FAS0095 SCREW, HXHD, 5/16-18UNCx2.00", G8
FAS0086 WASHER, FLAT, 5/16"ID
22200-0 PLUSNUT TOOL



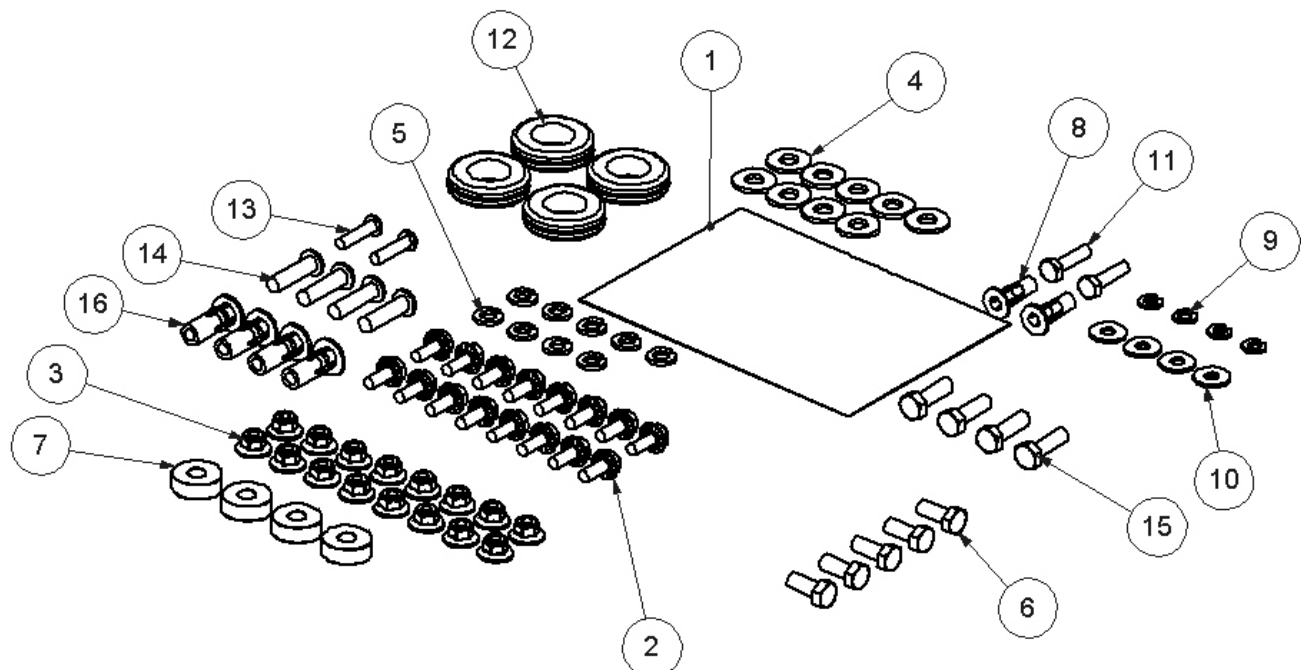
Place barrel of the plusnut body in sheet metal thru hole until flange is flush with sheet metal.

Using a 9/16" combination wrench of plusnut tool body and a second hand wrench, ratchet, or air tool, rotate the hex bolt head CW to draw plus nut flanges up (set the plusnut).

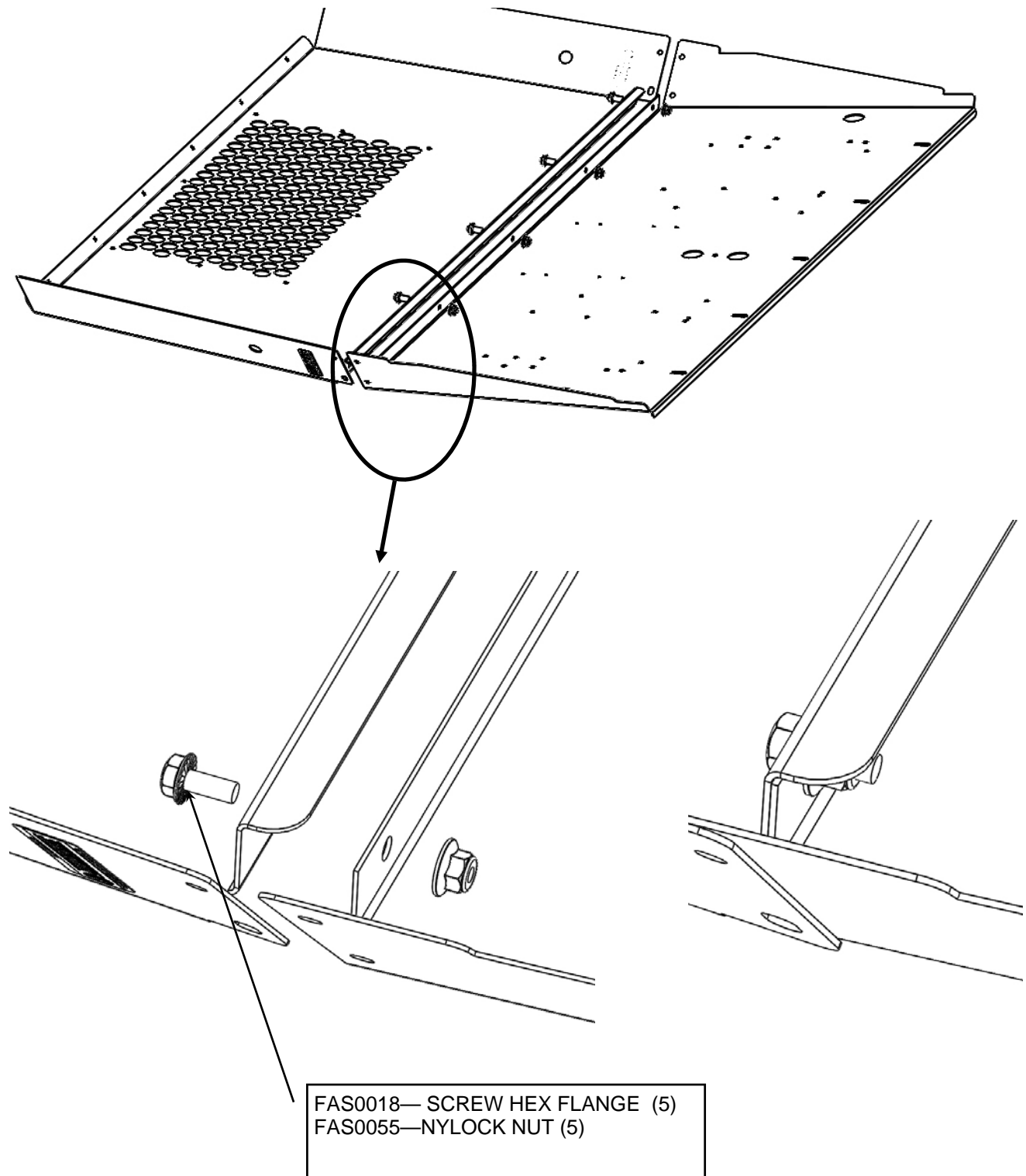
Assembly and Installation Fastener Identification Sheet (BAG48409)

ITEM NO.	PART NUMBER	DESCRIPTION	BAG48409/QTY.
1	BAG0507-A	5" x 7" 3MIL AUTOBAG	1
2	FAS0018	SCREW,HH SFLNG 1/4-20X.82 ZP	16
3	FAS0055	Nut, Hex Flange,Nylock 1/4-20	16
4	FAS0086	WASHER,FLAT USS 5/16 ZP	9
5	FAS0098	Washer, Lock, Split, 5/16, Zinc Plate	9
6	FAS0081	Screw, Hex Hd, 5/16-18x0.75 Zn Plate	5
7	03927-1	Floor Spacer Short	4
8	FAS0052	Plusnut, 1/4	2
9	FAS0060	Washer, Lock, Split, 1/4	4
10	FAS0067	Washer, Flat, 1/4	4
11	FAS0078	Screw, Hex Hd, 1/4-20x1.00 Zn Plate, Grade 8	2
12	36096-0	GROMMET,RUBBER,7/8 ID	4
13	FAS0733	Screw, Button Hd Hex Soc, M6-1.00 X 25	2
14	FAS0741	Screw, Button Hd Hex Soc, M8-1.25 X 30	4
15	FAS0082	Screw, Hex Hd, 5/16-18x1.00 ZN, YELLOW G8	4 *
16	FAS0091	Plusnut, 5/16	4 *

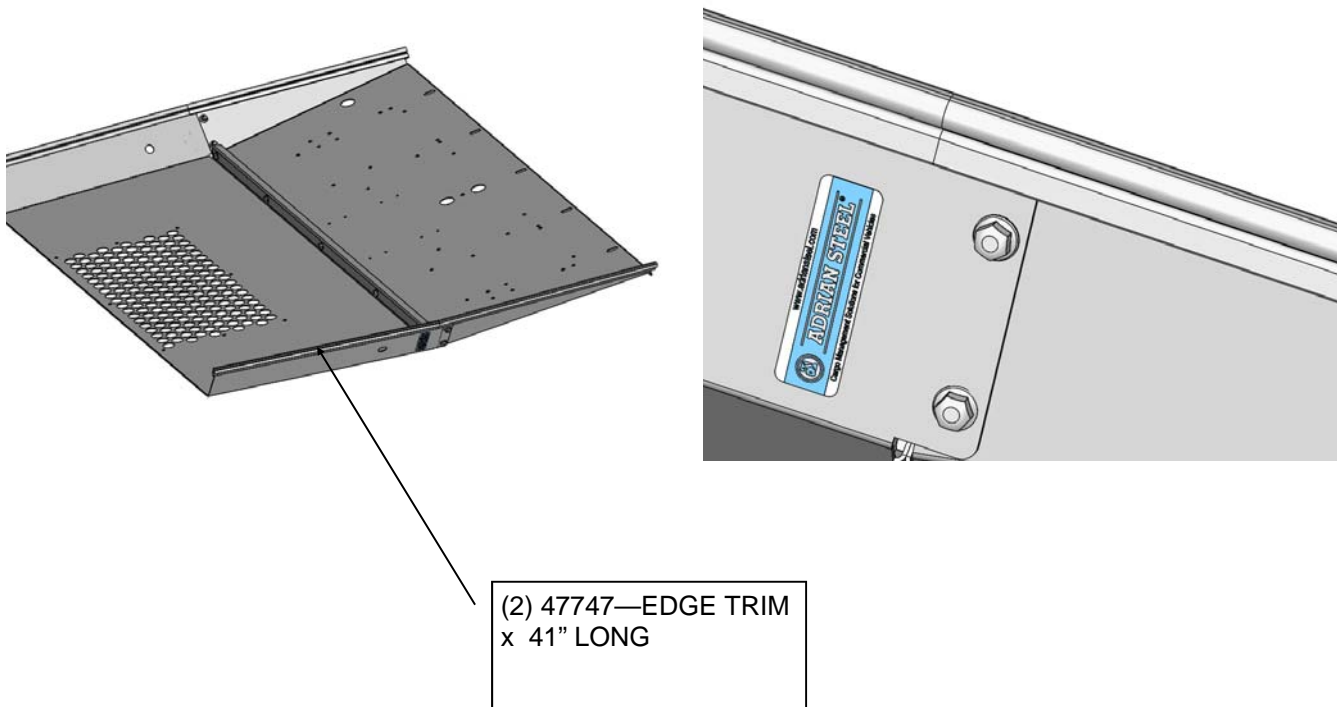
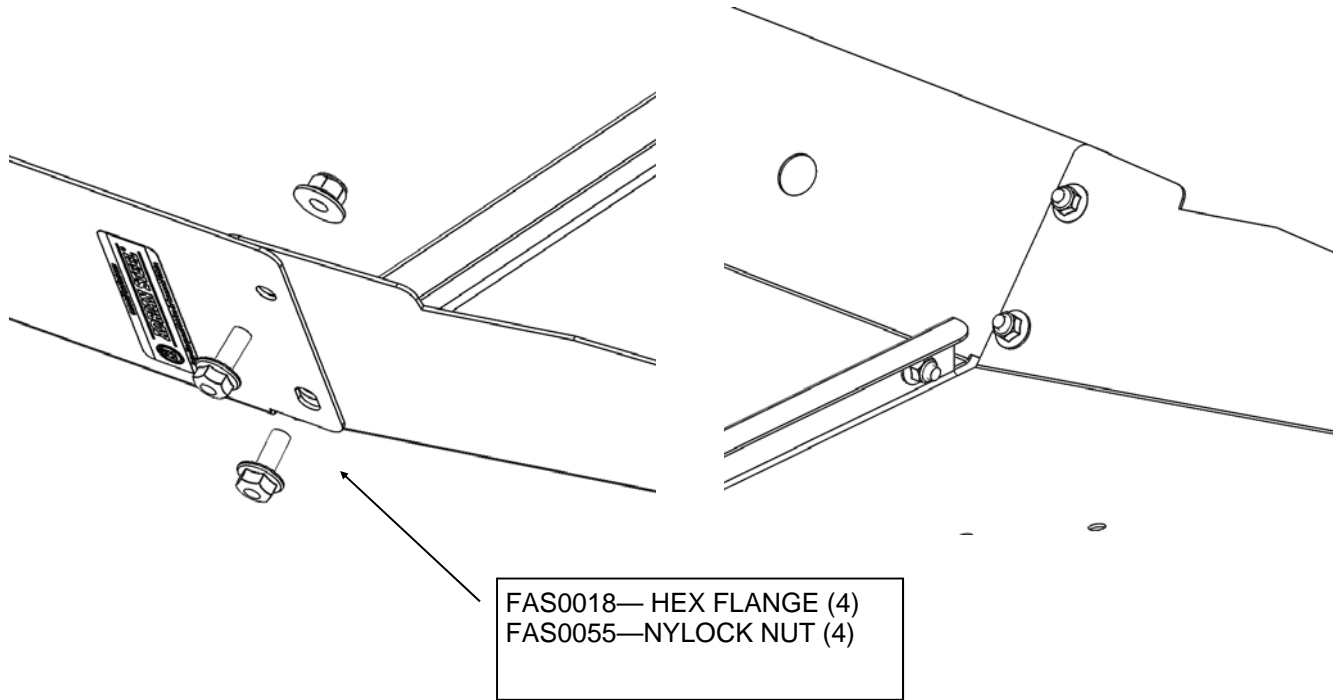
* FAS0082 and FAS0091 WILL BE EXTRA FASTENERS WITH A NORMAL INSTALL—THESE ARE USED WHEN REPLACING THE OEM SUPPLIED PARTITION



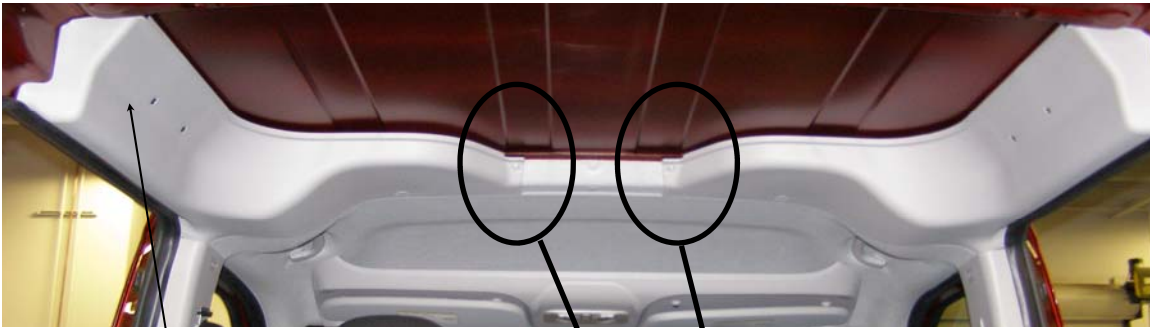
STEP 1 - ASSEMBLE THE PARTITION.



STEP 2 - ADD SIDE WING FASTENERS AND EDGE TRIM



STEP 3 VEHICLE PREPERATION—HEADER PANEL
IF YOU ARE REMOVING THE OEM PARTITION GO TO STEP 8



REMOVE OEM PLASTIC TRIM
BOTH SIDES

EXISTING HOLE LOCATION
CUT LINER WITH HOLE SAW
3/8 DIA THRU WITH DRILL
STOP (2) PLACES
FAS0052—1/4" PLUSNUT

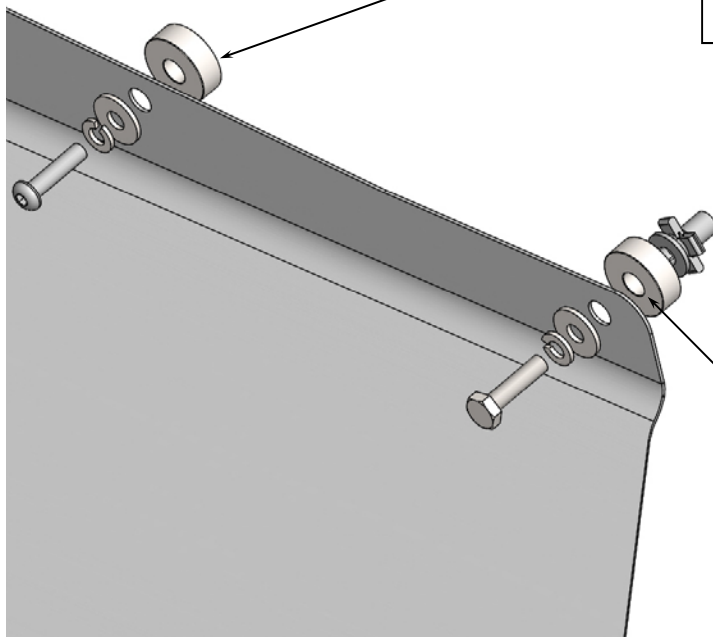
OEM THREADED INSERT
CUT LINER WITH HOLE SAW
WITHOUT DRILL
(2) PLACES



STEP 4 - ADD HEADER PANEL



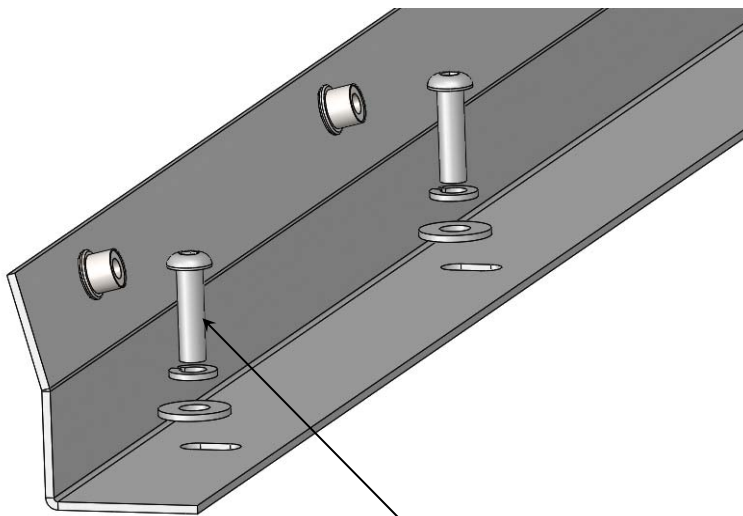
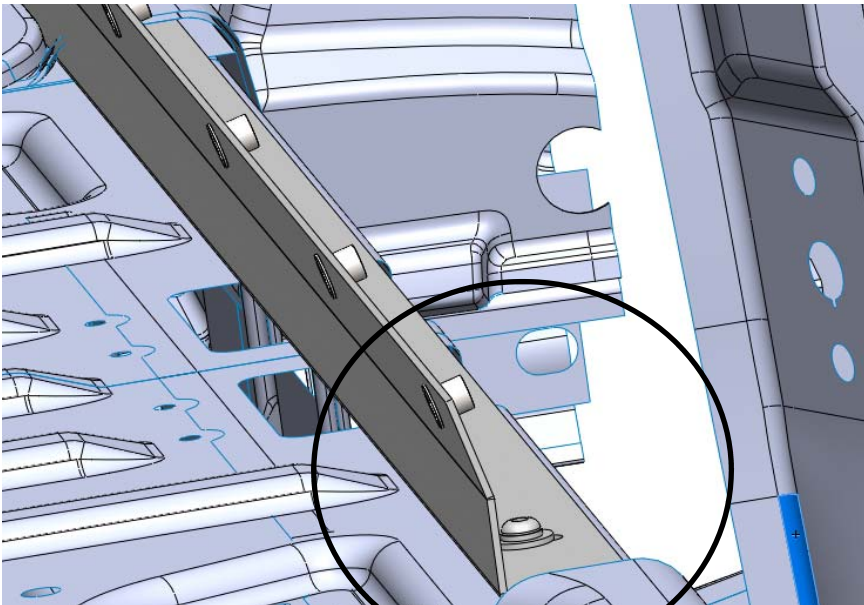
47749-G
HEADER PANEL



03927-1—SPACER, SHORT (2)
FAS0067—FLAT WASHER (2)
FAS0060—LOCK WASHER (2)
FAS0733—M6 BTN HD X 25 MMLG (2)

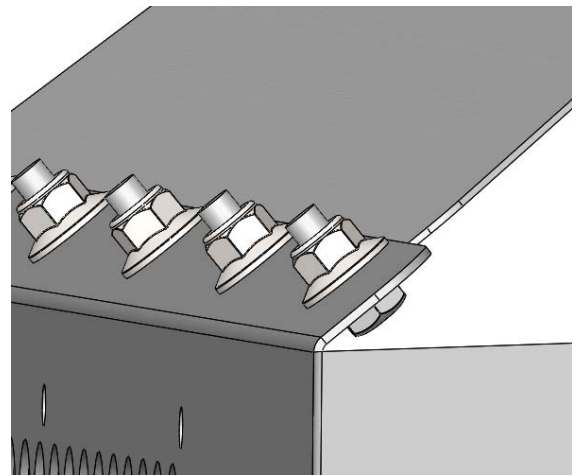
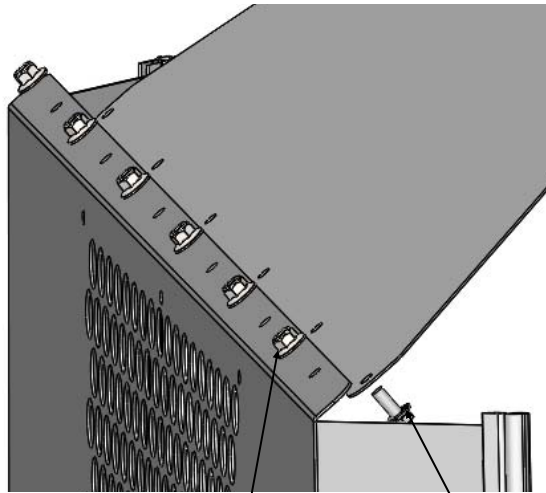
03927-1—SPACER, SHORT (2)
FAS0067—FLAT WASHER (2)
FAS0060—LOCK WASHER (2)
FAS0078—HEX HD X 1" LG (2)

STEP 5 - ADD FLOOR RAIL—EXISTING M8 THREADED INSERTS



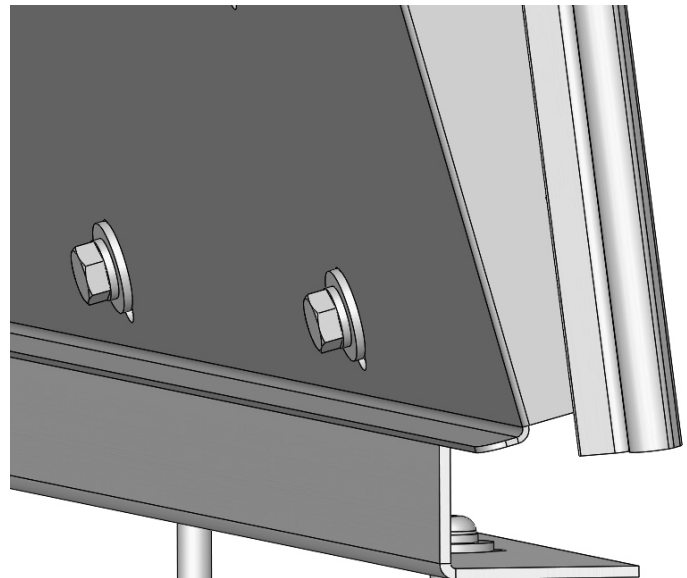
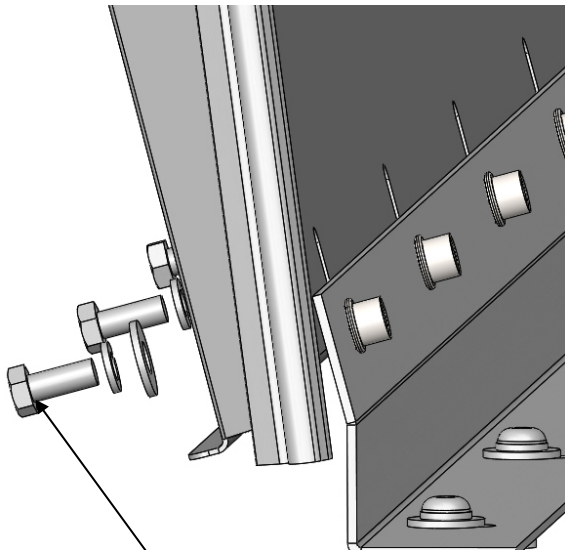
FAS0741— M8 SOC HD X30 MM (4)
FAS0098—LW (4)
FAS0086—FW (4)

STEP 6— CAREFULLY PLACE THE ASSEMBLED PARTITION IN VEHICLE



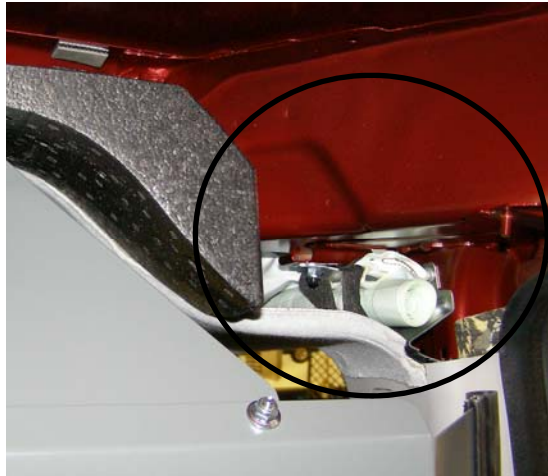
FAS0055—NYLOCK NUT (6)

FAS0018— HEX FLANGE (6)

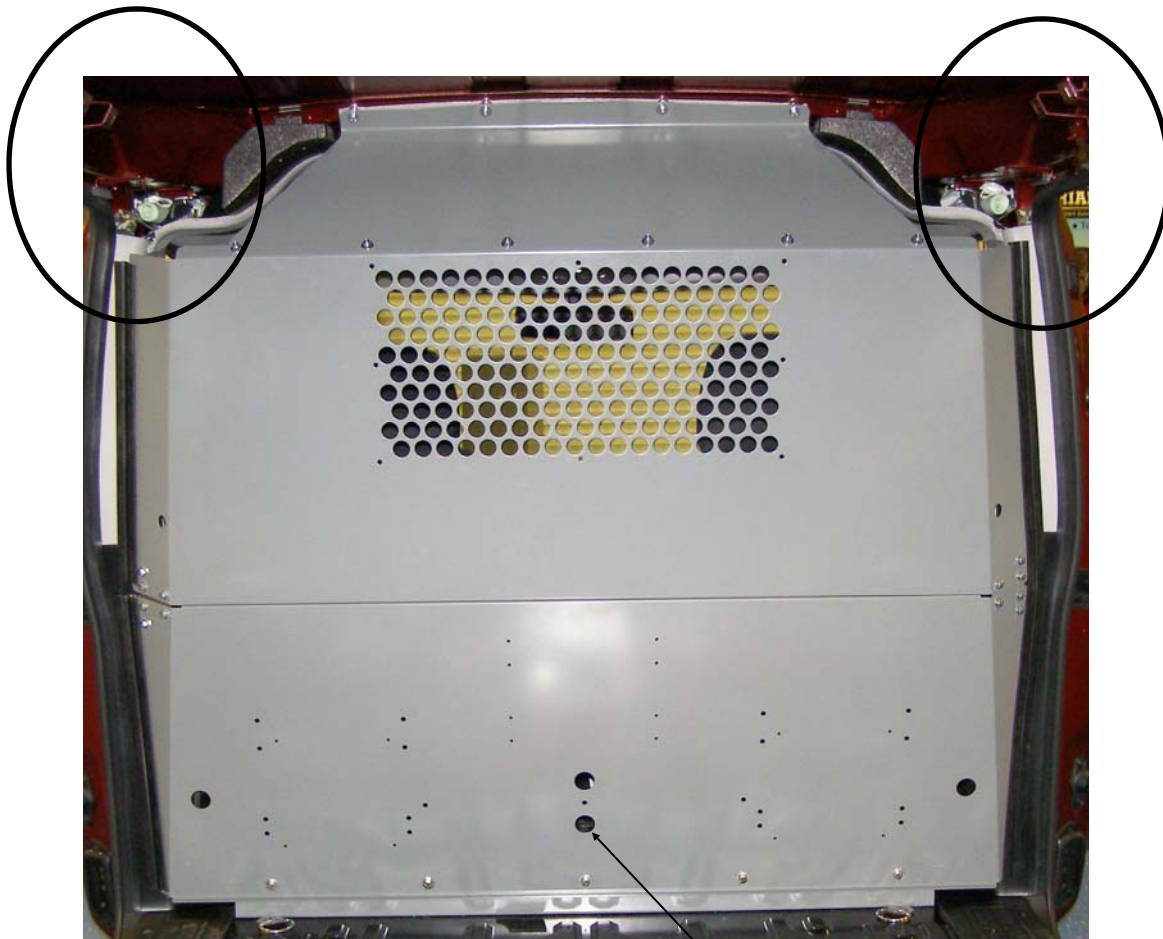
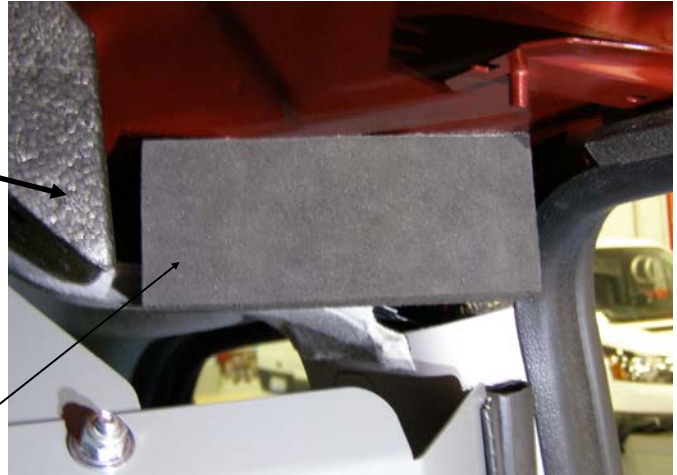


FAS0081— 5/16 HEX hd x 3/4 (5)
FAS0098—5/16 LOCK WASHER (5)
FAS0086—5/16 FLAT WASHER (5)

STEP 7— ADD FOAM BLOCKS BY AIR BAGS

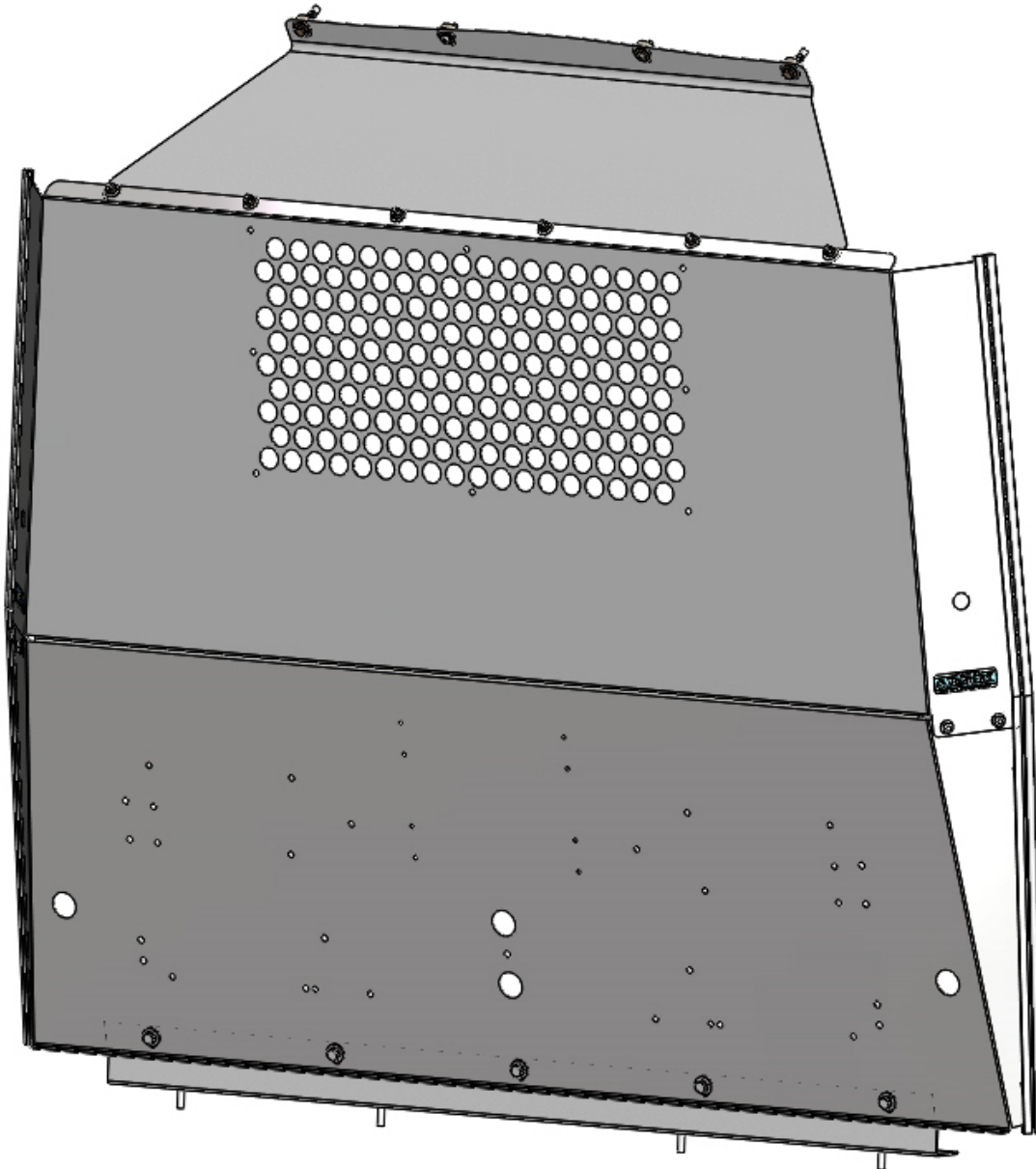


48496—FOAM PAD (2)



36096-0—ADD GROMMETS (4)

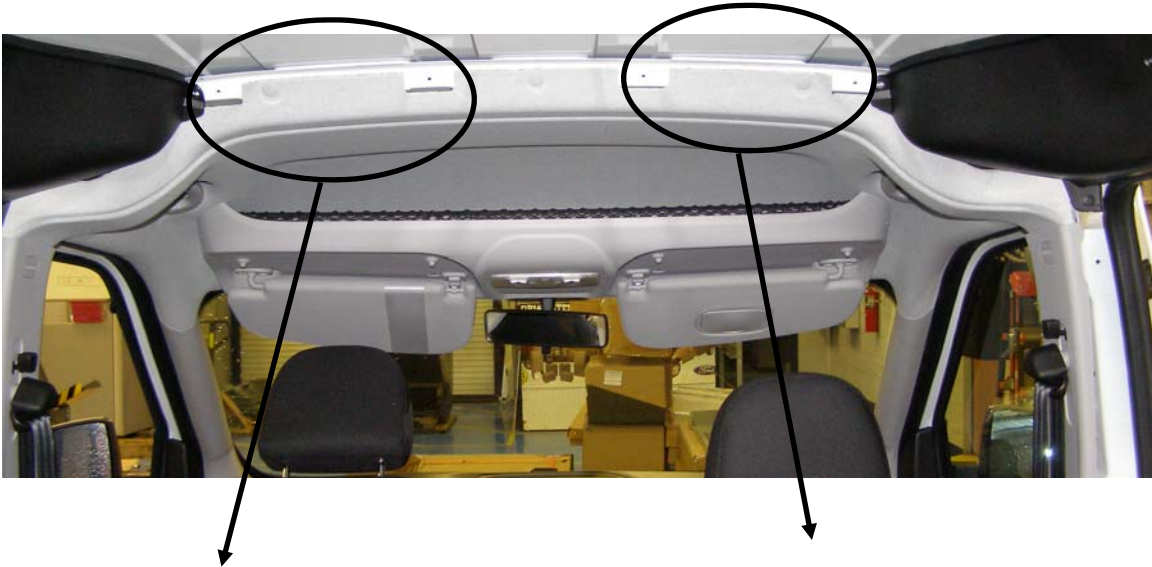
YOUR INSTALLATION IS NOW COMPLETE



**DOUBLE CHECK ALL FASTENERS LOCATIONS TO BE SURE THAT ALL
FASTENERS ARE TIGHTENED TO SPECIFICATIONS.
YOUR INSTALLATION IS NOW COMPLETE!
STOW THIS COPY IN THE VEHICLE FOR FUTURE REFERENCES!**

STEP 8 VEHICLE PREPERATION—REMOVE OEM PARTITION, DIFFERENT TRIM PACKAGE

NOTE : FOLLOW THESE INSTRUCTIONS FOR A VEHICLE THAT IS EQUIPPED WITH THE OEM PARTITION—NEEDS TO BE REMOVED



OEM THREADED INSERT
(2) PLACES

REMOVE PUSH PIN
CUT LINER WITH HOLE SAW
3/8 DIA THRU WITH DRILL
STOP (2) PLACES
FAS0052—1/4" PLUSNUT



STEP 8B -VEHICLE PREPERATION—REMOVE OEM PARTITION, ADD FLOOR RAIL

NOTE : FOLLOW THESE INSTRUCTIONS FOR A VEHICLE THAT IS EQUIPPED WITH THE OEM PARTITION—NEEDS TO BE REMOVED



OEM THREADED INSERT
(4) PLACES.
NORMAL PAR MTG LOCATION

PUSH PARTITION INTO B-PILLAR
TRANSFER HOLE LOCATIONS
(4) PLACES HIT FLOOR EXTENSION.
1/2 DIA THRU WITH DRILL STOP
ADD FAS0091(4) PLACES



TRANSFERED HOLE LOCATIONS
WITH ADDED FAS0091 PLUSNUT

FAS0082— 5/16 HEX hd x 1 (4)
FAS0098—5/16 LOCK WASHER (4)
FAS0086—5/16 FLAT WASHER (4)