

FASTENER GROUPS LISTED BELOW ARE USED FOR ASSEMBLY AND INSTALLATION. **SOME ASSEMBLY DRILLING IS REQUIRED.** PARTITION INSTRUCTIONS & FASTENERS ARE WITH THAT UNIT. USE KD UNIT DRAWINGS TO IDENTIFY THEIR SEPARATE PARTS. CUSTOMER SPECIFIED SHELF DIMENSIONS ARE SHOWN HERE.

SYM. FASTENERS DRILL

ASSEMBLY FASTENERS

- { 1/4-20 X 1/2" THP.SCW. } 9/32
- { 1/4-20 HX. FLANGE NUT } 9/32
- { 1/4-20 X 3/4" HX.HD.SCW. } 9/32
- { 1/4-20 HX. FLANGE NUT } 9/32

INSTALLATION FASTENERS

- { 1/4-20 PLUSNUT "P8" } 13/32
- { 1/4-20 X 1" HH.SCW.FT } 13/32
- { 1/4 PLN WASHER } 13/32
- { 1/4 SPLIT RING L'WASH } 13/32
- { 1/4 PLN. WASHER } 9/32
- { 1/4-20 HX.STOP NUT } 9/32
- { 1/4-20 X 1-1/2 HH.SCW.FT } 9/32
- { 1/2 PLN. WASHER } 9/32
- { 1/4-20 PLUSNUT "P8" } 13/32
- { 1/4-20 X 1-1/2" HH.SCW.FT } 13/32
- { 1/4 PLN WASHER } 13/32
- { 1/4 SPLIT RING L'WASH } 13/32



ADRIAN STEEL CO.
906 JAMES STREET
ADRIAN, MI 49221
517/265-6194

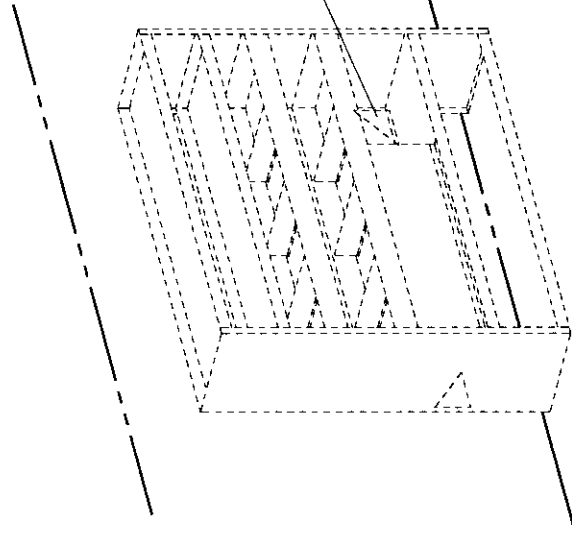
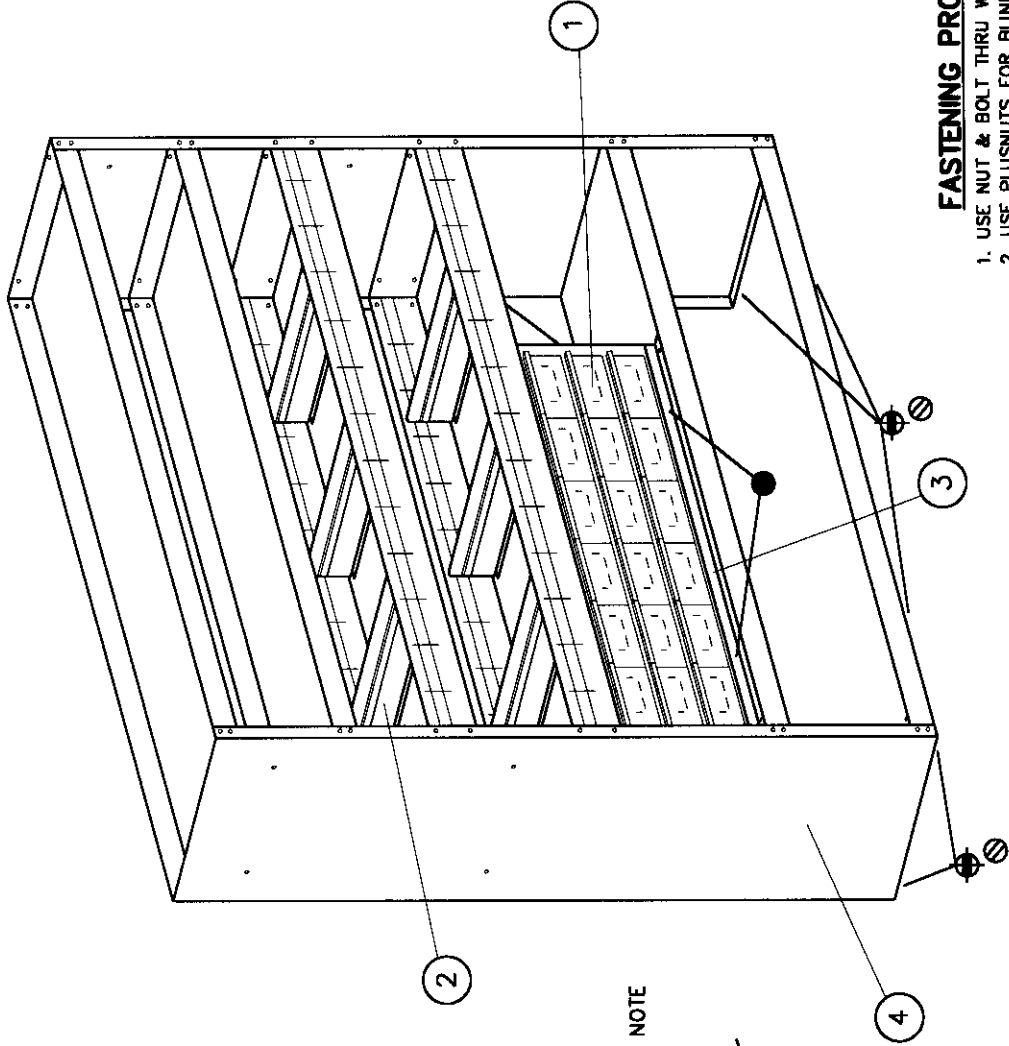
MD706
KD STORAGE UNIT
14 x 60 x 52

DWG BY: ECN# 6071 DATE: 6/27/02 CHK BY: S/L MD706 A
PACKAGE WEIGHT: 172.68 # HCG= 26 VCG= 30
REFERENCE: REF 24605

ITEM PART NO. DESCRIPTION QTY.

- | | | | |
|---|---------|-----------------------|---|
| 1 | 36 | 18-DRAWER UNIT | 1 |
| 2 | DV14 | DIVIDER/PNTD; #50KD | 6 |
| 3 | 39 | Z RISER #36 18-DRAWER | 1 |
| 4 | HD-52WP | KD UNIT 14x60x52 HD | 1 |

NOTE :
RELOCATE LOWER GUSSETS TO THIS BOTTOM
SHELF & INVERT THEM TO CLEAR WHEEL HOUSE



SEE NOTE

CAUTION:
DRILL THRU FLOOR WITH CARE
WATCH FOR GAS TANK, CONTROL
LINES, & ELECTRICAL WIRING.

FASTENING PROCEDURES

1. USE NUT & BOLT THRU WHEREVER POSSIBLE.
2. USE PLUSNUTS FOR BLIND FASTENING.
3. USE SHEET METAL SCREWS IN SHEAR ONLY.

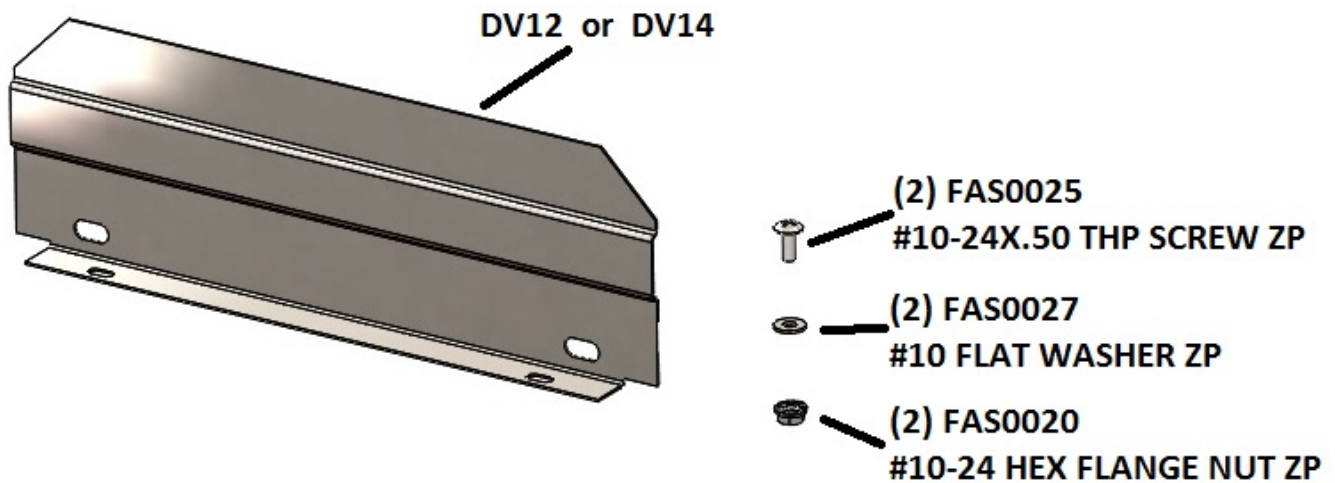
A- MD706

Introduction / Comments:

DV12 / DV14 Slip-In / Bolt In Divider Install Instructions

Note:

It is advised that all fasteners used in this assembly and installation should be checked for tightness at the following intervals: @ 2-weeks and again @ 6-weeks of operation. This preventive maintenance step must be completed to ensure your Product gives you long service life.



DV12 / DV14

- PRECAUTIONS -



CAUTION



**THE USE OF AIR IMPACT TOOLS CAN
OVER-TORQUE FASTENERS AND
CAUSE FASTENER FAILURE!**



CAUTION



**ALL INSTALLATION HOLES SHOULD BE SEALED
WITH SILICON OR BUTYL SEALANT TO PREVENT
EXHAUST FUMES FROM ENTERING THE VEHICLE!**



DANGER



**INSPECT FOR FUEL TANK, FUEL LINES, BRAKE LINES, HIGH
VOLTAGE BATTERIES AND ELECTRICAL LINES PRIOR TO
DRILLING TO AVOID DAMAGING CRITICAL VEHICLE SYSTEMS
OR INJURY TO INSTALLER DURING INSTALLATION PROCESS!**



CAUTION



**TO AVOID DAMAGING THE VEHICLE ALWAYS USE DRILL
STOPS WHEN DRILLING ANY INSTALLATION HOLES!
ADRIAN AVAILABLE PART #'S 31121-0 (3/8" X 1/2"
DEEP), 31121-0 (1/2" x 1/2" DEEP)**



- IMPORTANT WARRANTY REQUIREMENTS -

1. SUBSTITUTING ADRIAN STEEL SPECIFIED FASTENERS FOR ASSEMBLY AND/OR INSTALLATION WILL VOID YOUR PRODUCT WARRANTY.
2. ALL HOLES DRILLED INTO VEHICLE SHOULD HAVE THE RAW METAL EDGES SEALED WITH A SELF-ETCHING PRIMER TO RESIST CORROSION AND POTENTIAL FASTENER POINT FAILURE.
3. ALL FASTENERS USED IN THE INSTALLATION OF THIS PRODUCT SHOULD BE TIGHTENED TO THE TORQUE(S) SPECIFIED IN THESE INSTRUCTIONS.
4. THESE INSTRUCTIONS SHOULD BE KEPT WITH THE VEHICLE.

THE BASIC TOOLS NEEDED FOR MOST INSTALLATIONS



DRILL



DRILL BIT WITH
STOP



RATCHET, SOCKETS
AND/OR WRENCHES



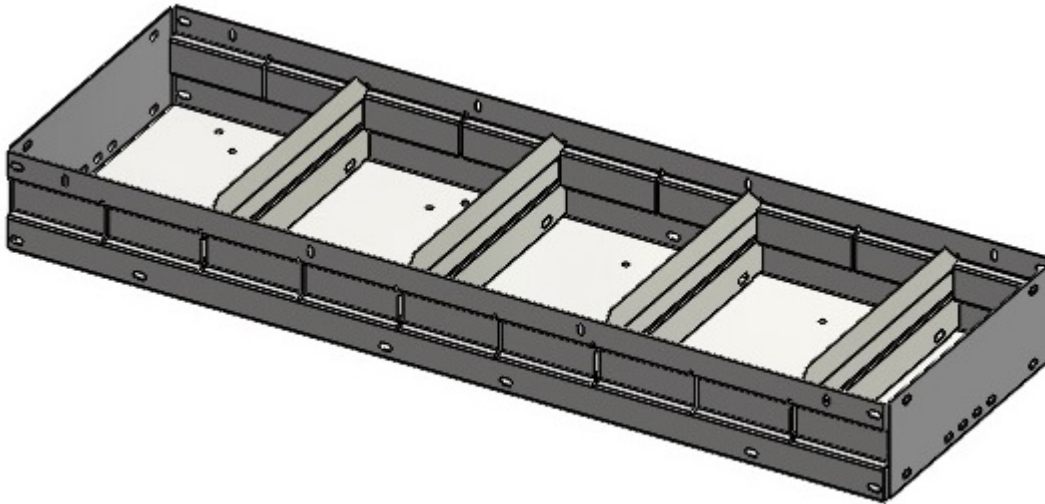
SCREWDRIVERS



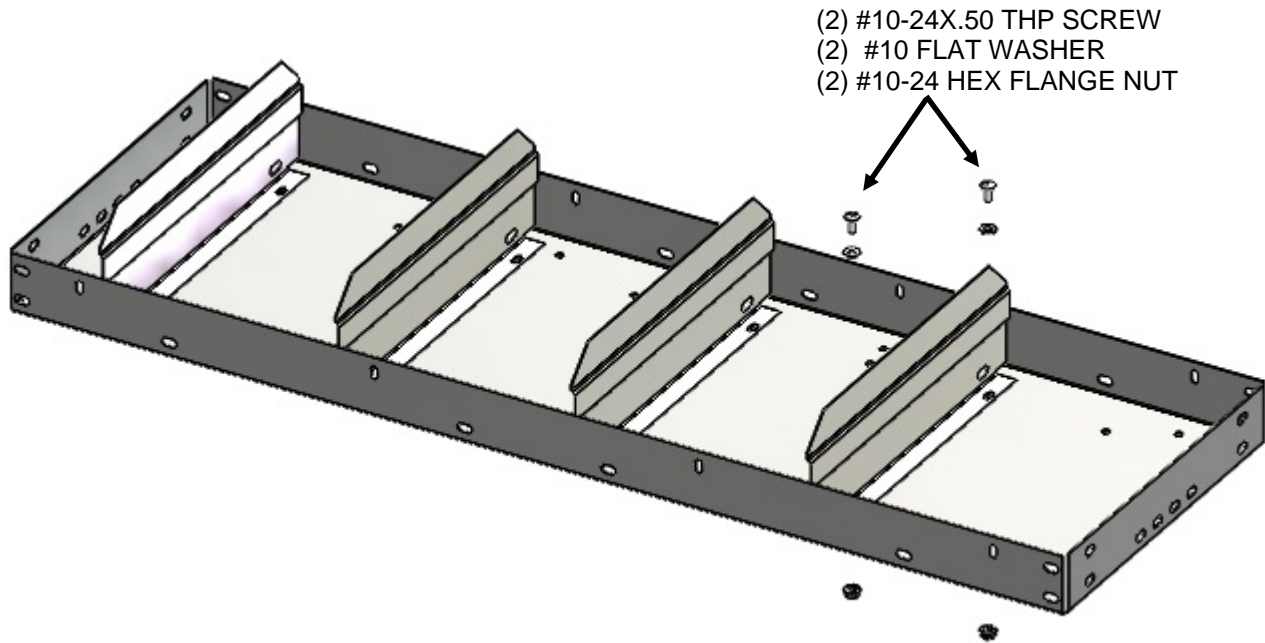
MEASURING TAPE

ADDITIONAL TOOLS MAY BE NEEDED FOR THIS INSTALLATION AND THEY WILL BE IDENTIFIED IN THE STEPS THAT FOLLOW.

Step 01 For Shelves with Embossed Sides, Slip Dividers into Shelf Embossments Evenly Spaced in Shelf as shown, unless otherwise specified by Customer. The Number of Dividers may vary per customer.



Step 02 For Shelves where the Dividers will need to be Bolted in, Use (2) #10-24x.50 THP Screw, Flat Washer, and Hex Flange Nut to bolt each divider to shelf
Evenly Spaced as shown unless otherwise specified by customer.
The number of dividers may vary per customer

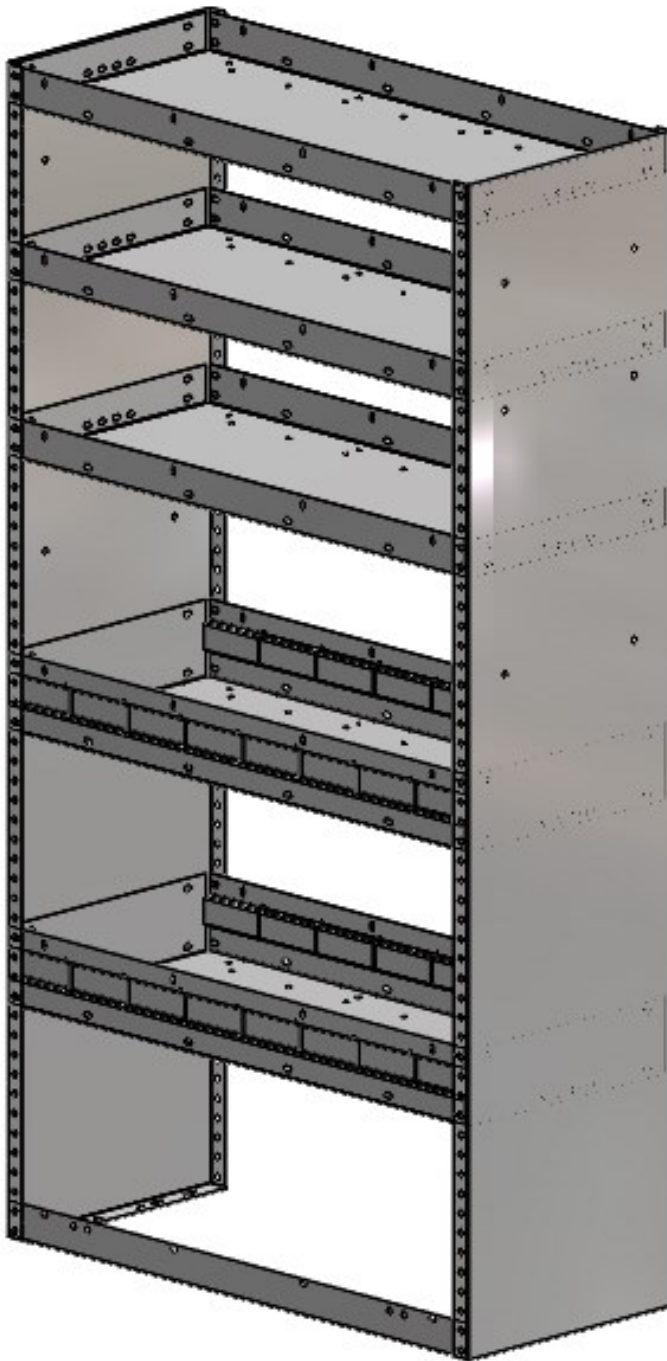


**DOUBLE CHECK ALL FASTENERS LOCATIONS TO BE SURE THAT ALL
FASTENERS ARE TIGHTENED TO SPECIFICATIONS.
YOUR INSTALLATION IS NOW COMPLETE!
STOW THIS COPY IN THE VEHICLE FOR FUTURE REFERENCES!**

Introduction / Comments:

Note:

It is advised that all fasteners used in this assembly and installation should be checked for tightness at the following intervals: @ 2-weeks and again @ 6-weeks of operation. This preventive maintenance step must be completed to ensure your Product gives you long service life.

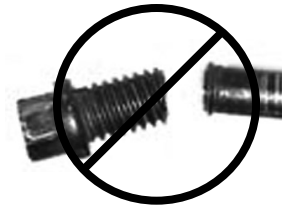


HD-32WP
HD-42WP
HD-52WP
HD-42AWP

- PRECAUTIONS -





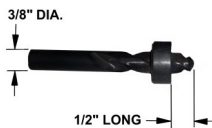
 **CAUTION** 
**THE USE OF AIR IMPACT TOOLS CAN
OVER-TORQUE FASTENERS AND
CAUSE FASTENER FAILURE!**





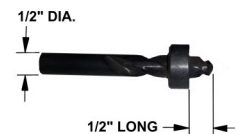
 **CAUTION** 
**ALL INSTALLATION HOLES SHOULD BE SEALED
WITH SILICON OR BUTYL SEALANT TO PREVENT
EXHAUST FUMES FROM ENTERING THE VEHICLE!**



 **DANGER** 
**INSPECT FOR FUEL TANK, FUEL LINES, BRAKE LINES, HIGH
VOLTAGE BATTERIES AND ELECTRICAL LINES PRIOR TO
DRILLING TO AVOID DAMAGING CRITICAL VEHICLE SYSTEMS
OR INJURY TO INSTALLER DURING INSTALLATION PROCESS!**



 **CAUTION** 
**TO AVOID DAMAGING THE VEHICLE ALWAYS USE DRILL
STOPS WHEN DRILLING ANY INSTALLATION HOLES!
ADRIAN AVAILABLE PART #'S 31121-0 (3/8" X 1/2"
DEEP), 31121-0 (1/2" x 1/2" DEEP)**



- IMPORTANT WARRANTY REQUIREMENTS -

1. SUBSTITUTING ADRIAN STEEL SPECIFIED FASTENERS FOR ASSEMBLY AND/OR INSTALLATION WILL VOID YOUR PRODUCT WARRANTY.
2. ALL HOLES DRILLED INTO VEHICLE SHOULD HAVE THE RAW METAL EDGES SEALED WITH A SELF-ETCHING PRIMER TO RESIST CORROSION AND POTENTIAL FASTENER POINT FAILURE.
3. ALL FASTENERS USED IN THE INSTALLATION OF THIS PRODUCT SHOULD BE TIGHTENED TO THE TORQUE(S) SPECIFIED IN THESE INSTRUCTIONS.
4. THESE INSTRUCTIONS SHOULD BE KEPT WITH THE VEHICLE.

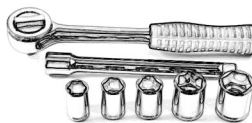
THE BASIC TOOLS NEEDED FOR MOST INSTALLATIONS



DRILL



DRILL BIT WITH
STOP



RATCHET, SOCKETS
AND/OR WRENCHES



SCREWDRIVERS



MEASURING TAPE

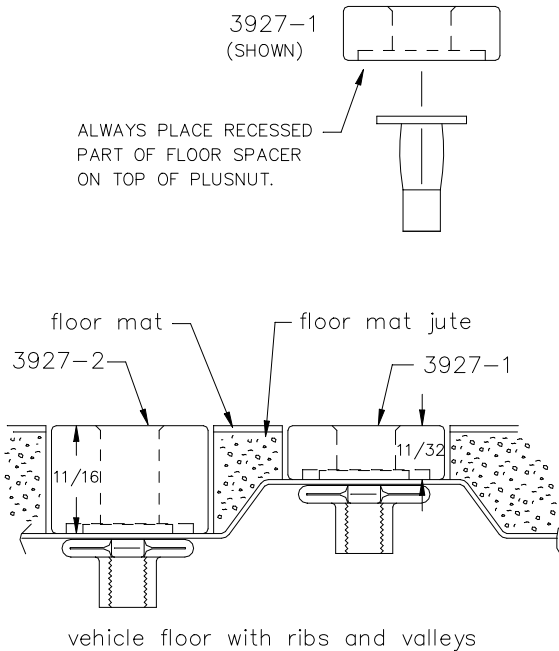
ADDITIONAL TOOLS MAY BE NEEDED FOR THIS INSTALLATION AND THEY WILL BE IDENTIFIED IN THE STEPS THAT FOLLOW.

If your vehicle contains carpet or a rubber floor mat you will need to prepare the mounting location. Position the product to be installed into the vehicle and once you are satisfied with the mounting locations, mark the mounting locations. Using a 1-3/16" diameter carpet cutter (P/N: 31183-0). Select the appropriate floor spacers as shown in the illustration. Set those aside for use later into the installation process.

Using the correct drill bit size for the selected plusnut, drill the mounting holes in the vehicle sheet metal to prepare for installing the plusnuts.

If you are thru-bolting at any of the locations simply drill a hole that is 1/16" larger than the bolt size(s) for those locations.

Once you have drilled the holes into the vehicle, the raw metal edges should be sealed using a self-etching primer to resist corrosion and potential fastener point failure.



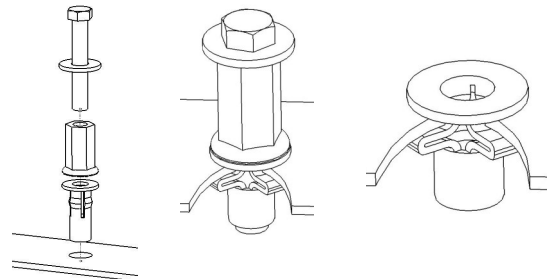
A PLUSNUT (RIVNUT) SETTING TOOL IS REQUIRED FOR PLUSNUT (RIVNUT) INSTALLATION . PLUS NUT SETTING TOOL CAN BE ORDERED THROUGH ADRIAN STEEL, OR USE AN AIR POWERED PLUSNUT SETTING GUN.

1/4-20UNC Plusnut (FAS0052) Use 3/8" dia. drill w/stop

FAS0080 SCREW, HXHD, 1/4-20UNCx2.00", G8
FAS0067 WASHER, FLAT, 1/4"ID
22200-0 PLUSNUT TOOL

5/16-18UNC Plusnut (FAS0091) Use 1/2" dia. drill w/stop

FAS0095 SCREW, HXHD, 5/16-18UNCx2.00", G8
FAS0086 WASHER, FLAT, 5/16"ID
22200-0 PLUSNUT TOOL

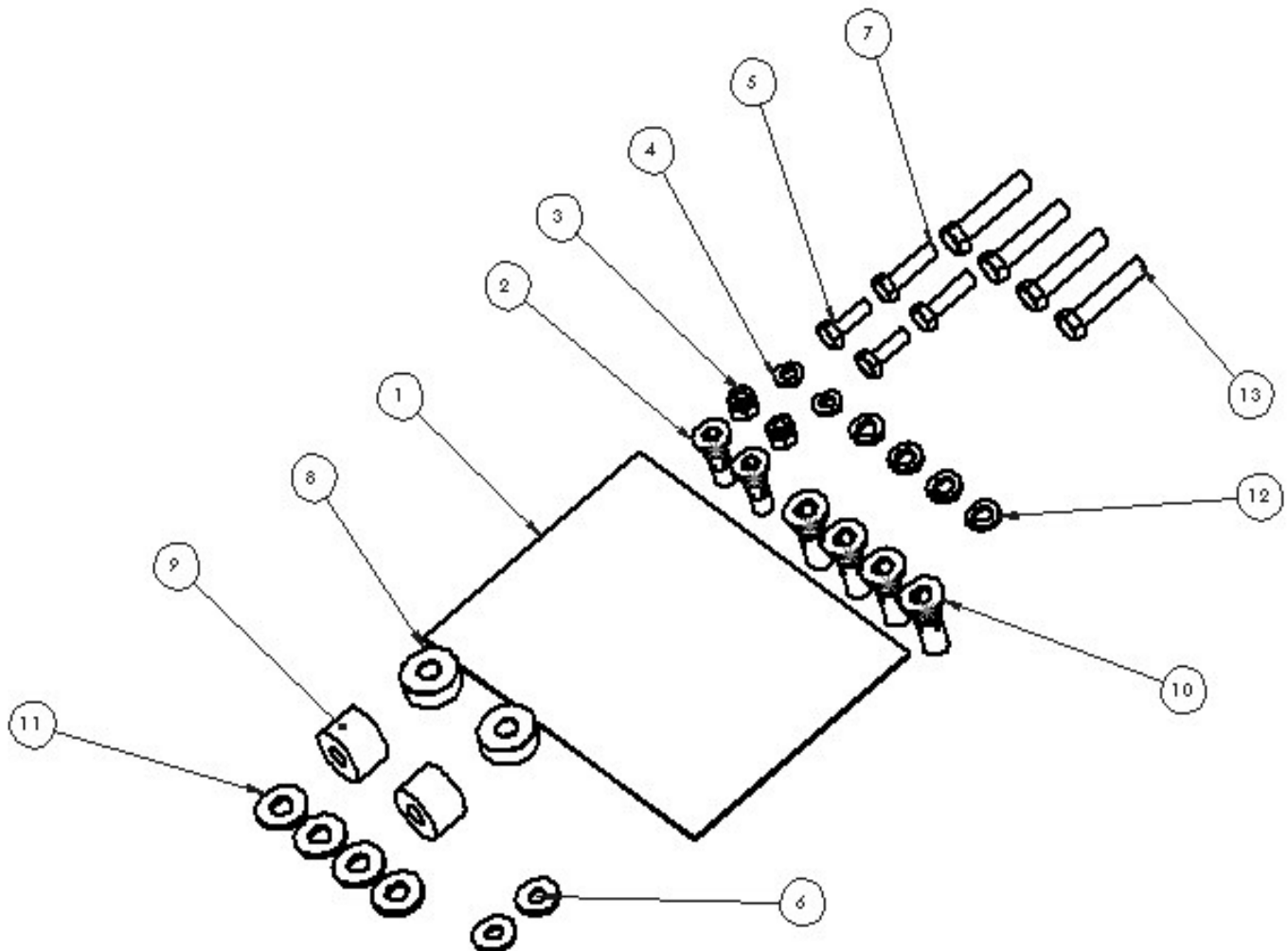


Place barrel of the plusnut body in sheet metal thru hole until flange is flush with sheet metal.

Using a 9/16" combination wrench of plusnut tool body and a second hand wrench, ratchet, or air tool, rotate the hex bolt head CW to draw plus nut flanges up (set the plusnut).

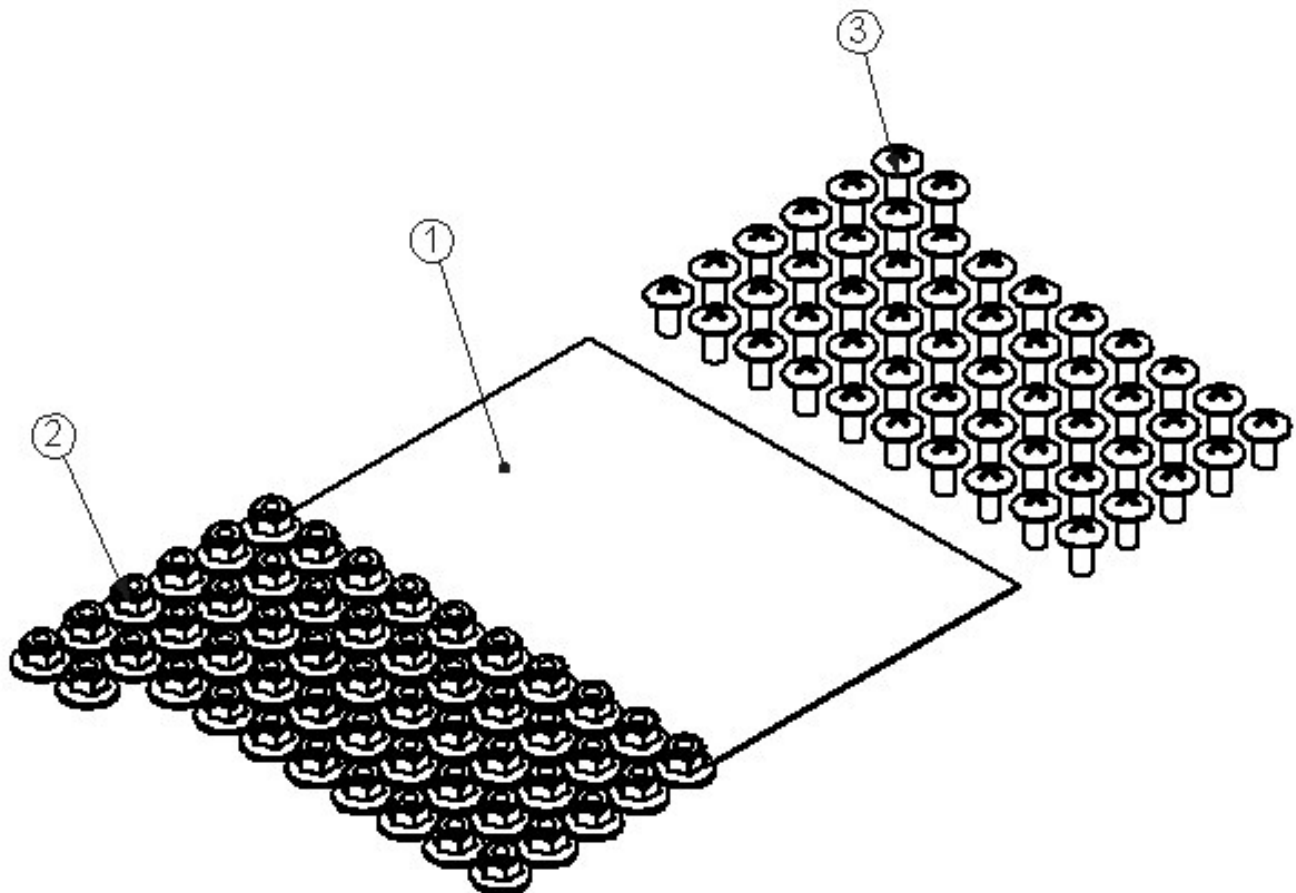
**Installation and/or Assembly Fasteners
BAGINSTL-A**

ITEM NO.	PART NUMBER	DESCRIPTION	QTY.
1	BAG0507-A	5" x 7" 3MIL AUTOBAG	1
2	FAS 0052	Plusnut, 1/4	2
3	FAS0058	Nut, Nylon Insert Lock, 1/4-20	2
4	FAS0060	Washer, Lock, Split, 1/4	2
5	FAS0063	Screw, Hex Hd, 1/4-20x0.75 Zn Plate, Grade 5	2
6	FAS0067	Washer, Flat, 1/4	2
7	FAS0078	Screw, Hex Hd, 1/4-20x1.00 Zn Plate, Grade 8	2
8	03927-1	Floor Spacer Short	2
9	03927-2	Tall Floor Spacer	2
10	FAS 0091	Plusnut, 5/16	4
11	FAS0086	WASHER, FLAT USS 5/16 ZP	4
12	FAS 0098	Washer, Lock, Split, 5/16, Zinc Plate	4
13	FAS0092	Screw, Hex Hd, 5/16-18x1.50 Zn Plate, G8	4

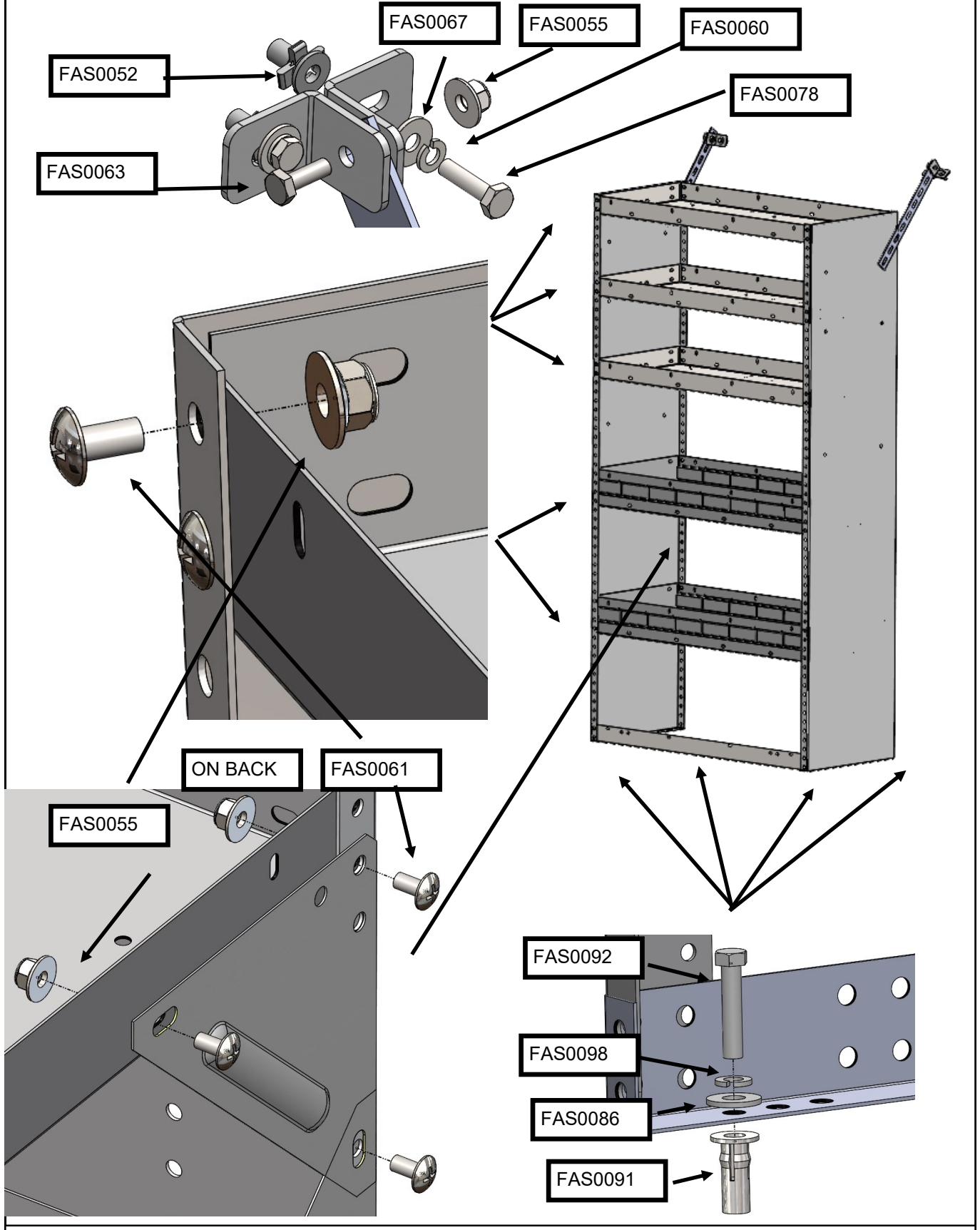


Installation and/or Assembly Fasteners
BAG00022-0

ITEM NO.	PART NUMBER	DESCRIPTION	BAG00022-0/QTY.
1	BAG0507-A	5" x 7" 3MIL AUTOBAG	1
2	FAS0055	Nut, Hex Flange, Nylock 1/4-20	52
3	FAS0061	Screw, Truss Hd. Ph, 1/4-20x0.50	52



Step 01 ASSEMBLE AND INSTALL SHELVING USING THE IMAGE BELOW

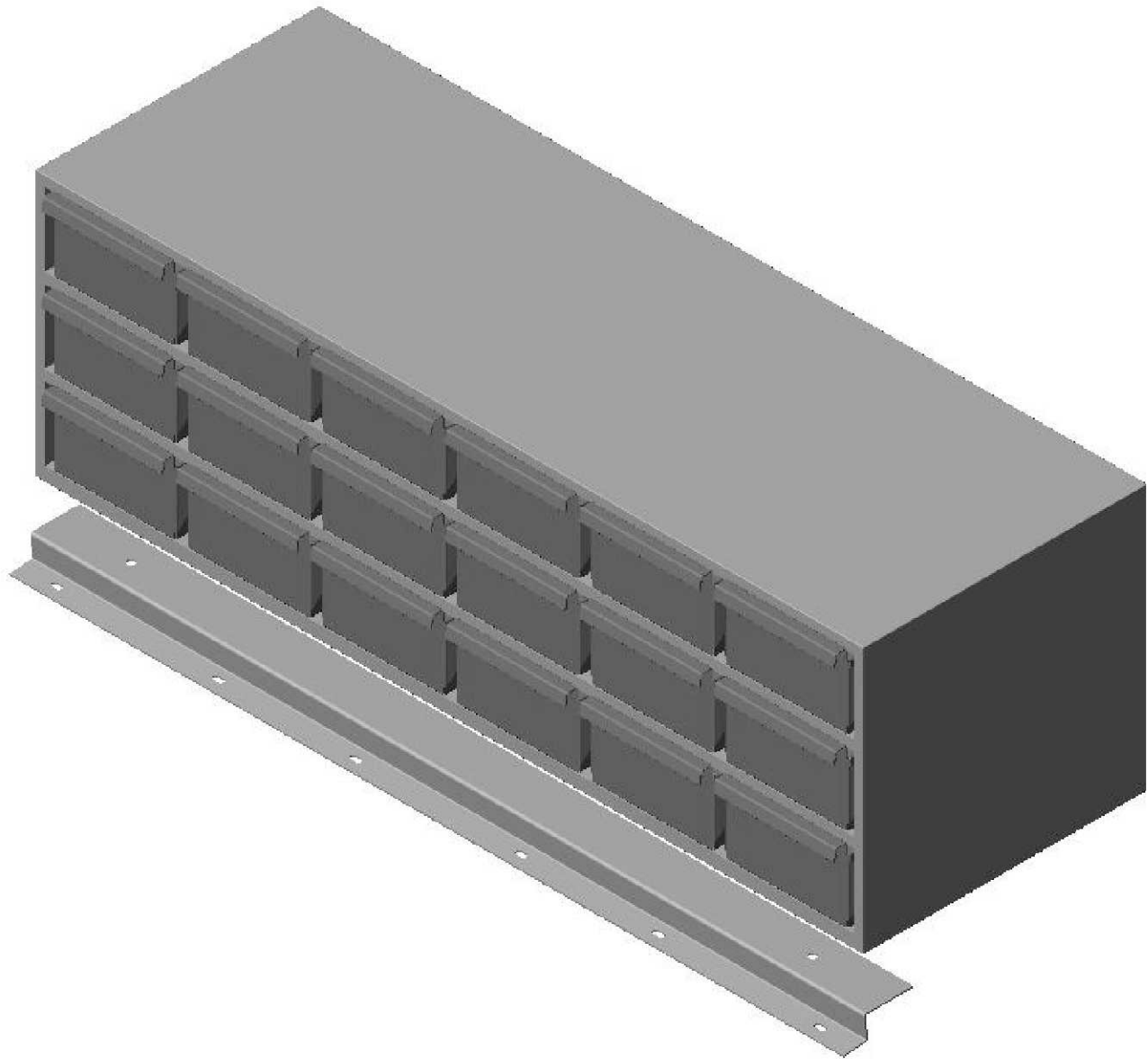




ADRIAN STEEL®

Cargo Management Solutions for Commercial Vehicles

Assembly/Installation Instructions and Owners Manual



#39

Z-RISER FOR #36 18 DRAWER UNIT

- PRECAUTIONS -





 **CAUTION** 
**THE USE AIR IMPACT TOOLS CAN
OVER-TORQUE FASTENERS AND
CAUSE FASTENER FAILURE!**





 **CAUTION** 
**ALL INSTALLATION HOLES SHOULD BE SEALED
WITH SILICON OR BUTYL SEALANT TO PREVENT
EXHAUST FUMES FROM ENTERING THE VEHICLE!**



 **DANGER** 
**INSPECT FOR FUEL TANK, FUEL LINES, BRAKE LINES, HIGH
VOLTAGE BATTERIES AND ELECTRICAL LINES PRIOR TO
DRILLING TO AVOID DAMAGING CRITICAL VEHICLE SYSTEMS
OR INJURY TO INSTALLER DURING INSTALLATION PROCESS!**



 **CAUTION** 
**TO AVOID DAMAGING THE VEHICLE ALWAYS
USE DRILL STOPS WHEN DRILLING ANY IN-
STALLATION HOLES!**



- IMPORTANT WARRANTY REQUIREMENTS -

1. SUBSTITUTING ADRIAN STEEL SPECIFIED FASTENERS FOR ASSEMBLY AND/OR INSTALLATION WILL VOID YOUR PRODUCT WARRANTY.
2. ALL HOLES DRILLED INTO VEHICLE SHOULD HAVE THE RAW METAL EDGES SEALED WITH A SELF-ETCHING PRIMER TO RESIST CORROSION AND POTENTIAL FASTENER POINT FAILURE.
3. ALL FASTENERS USED IN THE INSTALLATION OF THIS PRODUCT SHOULD BE TIGHTENED TO THE TORQUE(S) SPECIFIED IN THESE INSTRUCTIONS.
4. THESE INSTRUCTIONS SHOULD BE KEPT WITH THE VEHICLE.

THE BASIC TOOLS NEEDED FOR MOST INSTALLATIONS



DRILL

DRILL BIT WITH
STOPRATCHET, SOCKETS
AND/OR WRENCHES

SCREWDRIVERS



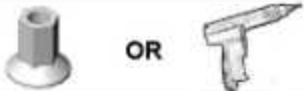
MEASURING TAPE

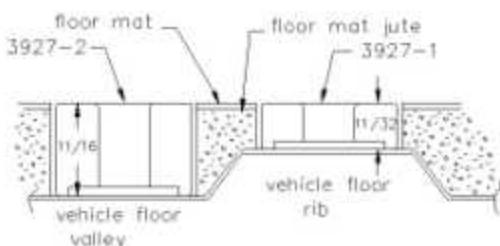
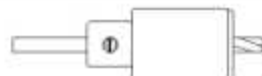
ADDITIONAL TOOLS MAY BE NEEDED FOR THIS INSTALLATION AND THEY WILL BE IDENTIFIED IN THE STEPS THAT FOLLOW.

Assembly/Installation Instructions and Owners Manual



WHEN INSTALLING PLUSNUTS MAKE SURE YOU USE THE CORRECT DRILL BIT WITH A STOP!

PLUSNUT SIZE	DRILL BIT SIZE
1/4-20 PLUSNUT, FAS0052	USE A 3/8" DIAMETER DRILL BIT WITH A STOP.
5/16-18 PLUSNUT, FAS0091	USE A 1/2" DIAMETER DRILL BIT WITH A STOP.
 NOTE: A PLUSNUT SETTING TOOL IS REQUIRED FOR PLUSNUT INSTALLATION AND IS NOT SUPPLIED WITH THIS KIT. ORDER PLUSNUT TOOLS FROM ADRIAN STEEL (P.N. 22200-0) OR USE AN AIR POWERED PLUSNUT SETTING GUN.	
NOTE: If your vehicle contains carpet or a rubber floor mat you will need to prepare the mounting locations using a 1-3/16" carpet cutter.	1-3/16" DIAMETER CARPET CUTTER P.N. 31183-0.

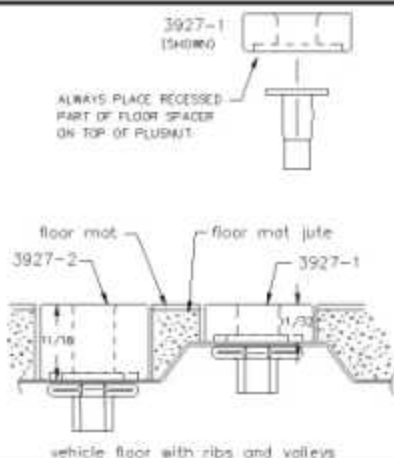


Step 01 Optional

If your vehicle contains carpet or a rubber floor mat you will need to prepare the mounting locations. **(if not, skip to STEP 02)**

Position the product to be installed into the vehicle and once you are satisfied with the mounting locations, mark the mounting locations. Using a 1-3/16" diameter carpet cutter. Select the appropriate floor spacers as shown in the illustration to the left. Set those aside for use later into the installation process.

Once you have prepared the carpet/floor mat for

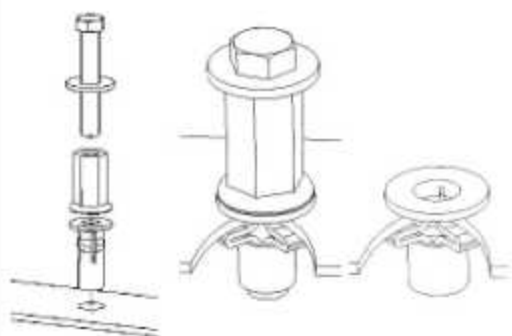


Step 02 Prepare Mounting Locations

Using a drill and drill bit (see table at top of page for correct size) drill the mounting holes in the vehicle sheet metal to prepare for installing the plusnuts.

If you are thru-bolting at any of the locations simply drill a hole that is 1/16" larger than the bolt size(s) for those locations.

Once you have drilled the holes into the vehicle, the raw metal edges should be sealed using a self-etching primer to resist corrosion and potential fastener point failure.



Step 03 Setting Plusnuts

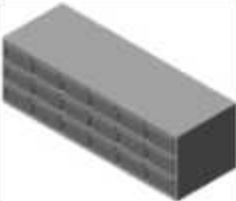



Use a Air Powered Plusnut Setting Gun to "set the plusnut" or if installing manually with hand tools, assembly the following:

- 1/4-20UNC Plusnut (FAS0052)**
FAS0080 SCREW, HXHD, 1/4-20UNCx2.00, G8
FAS0087 WASHER, FLAT, 1/4"ID
22200-0 PLUSNUT TOOL
5/16-18UNC Plusnut (FAS0091)
FAS0095 SCREW, HXHD, 5/16-18UNCx2.00, G8
FAS0088 WASHER, FLAT, 5/16"ID
22200-0 PLUSNUT TOOL

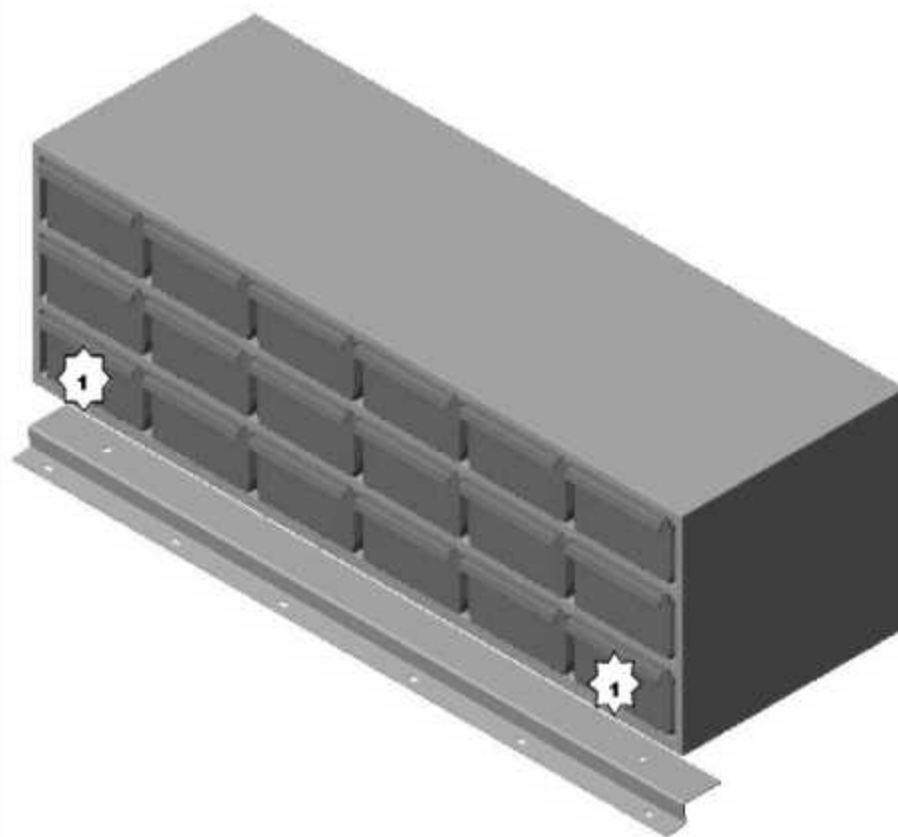
Place barrel of the plusnut body in sheet metal thru hole until flange is flush with sheet metal.

Using a 9/16" combination wrench of plusnut tool body and a second hand wrench, ratchet, or air tool, rotate the hex bolt head CW to draw plus nut flanges up (set the plusnut).




Remove hex bolt, washer, and plusnut. Inspect installation.

PARTS YOU WILL USE FOR STEP 04	#36 18-DRAWER UNIT (1) REQUIRED	#39 Z-RISER (1) REQUIRED	FAS0055, NUT, HX FLNG NYLOCK 1/4-20 (2) REQUIRED	FAS0063, SCREW, HH 1/4-20 X .75 (2) REQUIRED
				

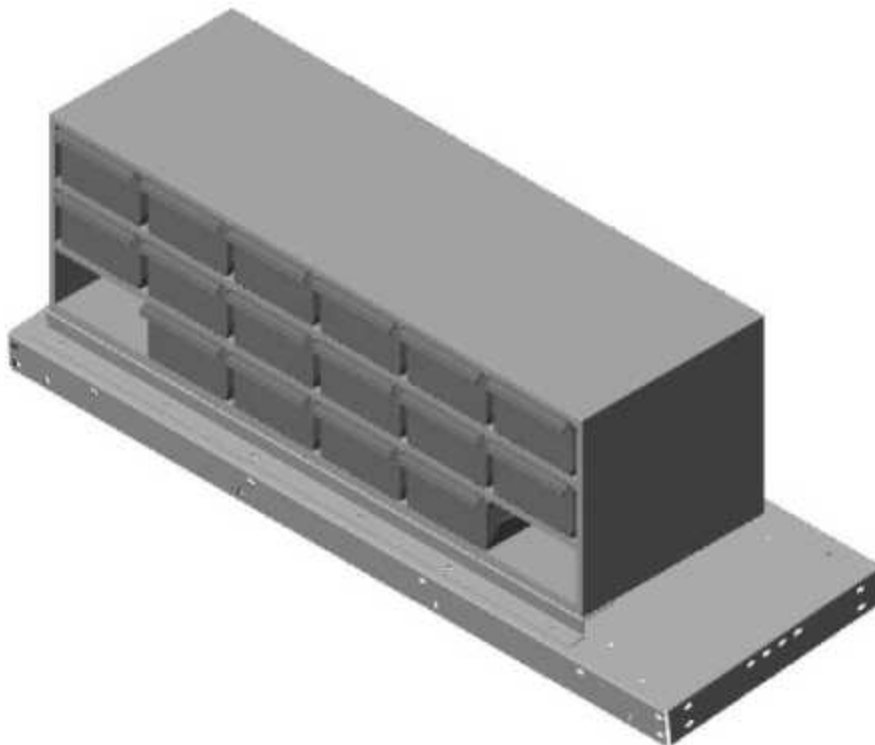
Instructions for Step 04



- 1) Remove (2) lower corner drawers.
- 2) Place #39 against bottom of #36 so that holes line up.
- 4) Install fasteners
- 5) Reinstall drawers

PARTS YOU WILL USE FOR STEP 05	UNIT FROM STEP 4 (1) REQUIRED	FAS0020, NUT, HEX FLANG #10-24 (3) REQUIRED	FAS0021, SCREW, RHP #10-24 X .50 (3) REQUIRED	
				

Instructions for Step 05



- 1) Locate unit on inverted shelf in desired position.
- 2) If no holes line up, mark and drill three 9/32" holes in shelf.
- 3) Clean up debris.
- 4) Install fasteners, and tighten.

**INSTALL
COMPLETE**