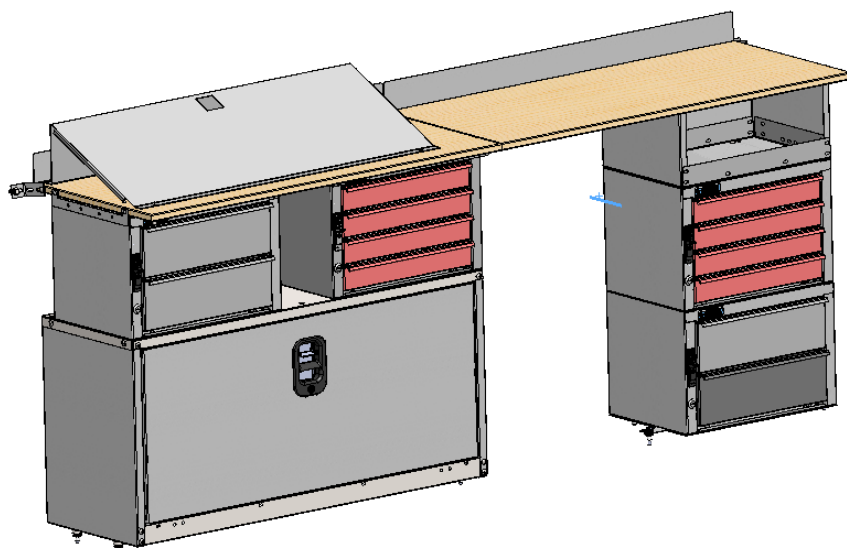




**ADRIAN STEEL**

*Cargo Management Solutions for Commercial Vehicles*

## StrSide Workbench Module, Promaster



*PRODUCT FEATURES*

*PRODUCT WEIGHT*

**235 LBS.**

*WIDTH x DEPTH x HEIGHT*

**84" x 18" x 34"**

*COLOR*

**Grey**

*CATALOG NUMBER*

**MP608PM**

**Locksmith package features ample small part storage and plenty of lockable storage space**

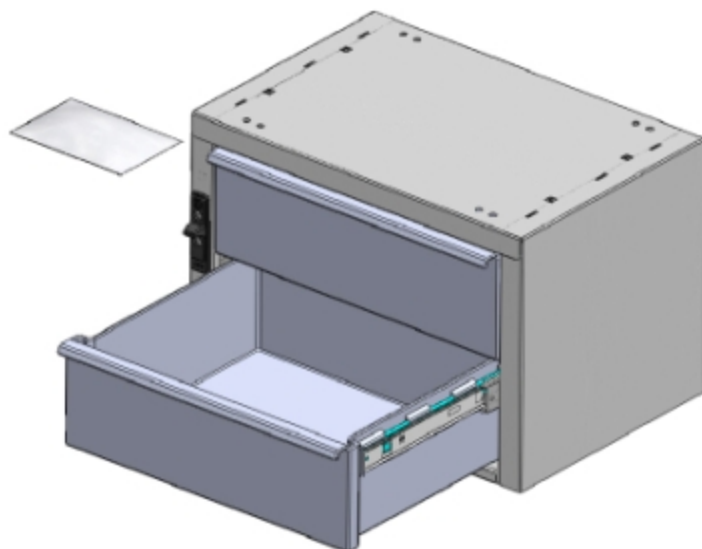
*PRODUCT APPLICATION*

**This product is designed for installation into the 2014 Dodge Promaster**

**ADRIAN STEEL**

Cargo Management Solutions for Commercial Vehicles

## 19, 2-DRAWER MEDIUM

*PRODUCT WEIGHT***27.4 lbs.***WIDTH x DEPTH x HEIGHT***18 x 12 x 12***CAPACITY***25 LBS. PER DRAWER***COLOR***GRAY***CATALOG NUMBER***19***PRODUCT FEATURES*

The drawer unit body is a sturdy welded and painted steel housing. The housing has ¼-20 riv-nuts installed into the base of the unit for easy installation. Also included are pre-drilled mounting holes in the top of the cabinet to allow for quick and easy stacking of the units. The number 19 drawer unit includes two (2) polymer drawers that ride on full extension ball bearing glides. The drawers have an inside dimension of 13.50" wide X 4.5" deep X 11.50" length. Each cabinet includes a sliding latch/lock system designed to secure the drawers during vehicle movement. A cam lock allows for securing your inventory for more security.

*PRODUCT APPLICATION*

This product is designed to be used in and/or on ADRIAN STEEL shelving units and can also be used as a standalone product. The product is great for small parts and supplies storage.

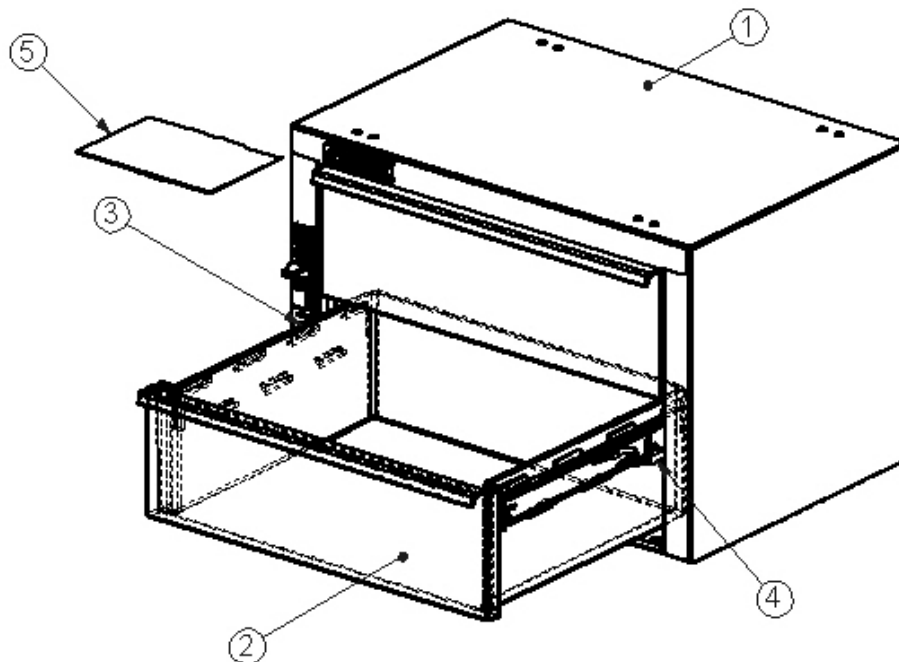
### Introduction / Comments:

The drawer unit body is a sturdy welded and painted steel housing. The housing has 1/4-20 riv-nuts installed into the base of the unit for easy installation. Also pre drilled mounting holes in the top of the cabinet to allow for quick and easy stacking of units. 2 polymer drawers ride on ball bearing glides. Each cabinet includes a sliding latch/lock system designed to secure the drawers during vehicle movement. A cam lock allows for securing your inventory for more security

### **Note:**

It is advised that all fasteners used in this assembly and installation should be checked for tightness at the following intervals: @ 2-weeks and again @ 6-weeks of operation. This preventive maintenance step must be completed to ensure your Product gives you long service life.

ITEM NO.	PART NUMBER	DESCRIPTION	19S/QTY.
1	39197-G	WRAPPER BODY ASSM	1
2	40016	DRAWER SUB ASSY. 19/919	2
3	40827-LH	250MM SLIDE, CABINET HALF, LH	2
4	40287-RH	250MM SLIDE, CABINET HALF, RH	2
5	BAG00001-0	FASTENER BAG 9,19,919	1



## 19 2 DRAWER MEDIUM

## - PRECAUTIONS -





 **CAUTION**   
**THE USE OF AIR IMPACT TOOLS CAN  
OVER-TORQUE FASTENERS AND  
CAUSE FASTENER FAILURE!**





 **CAUTION**   
**ALL INSTALLATION HOLES SHOULD BE SEALED  
WITH SILICON OR BUTYL SEALANT TO PREVENT  
EXHAUST FUMES FROM ENTERING THE VEHICLE!**



 **DANGER**   
**INSPECT FOR FUEL TANK, FUEL LINES, BRAKE LINES, HIGH  
VOLTAGE BATTERIES AND ELECTRICAL LINES PRIOR TO  
DRILLING TO AVOID DAMAGING CRITICAL VEHICLE SYSTEMS  
OR INJURY TO INSTALLER DURING INSTALLATION PROCESS!**



 **CAUTION**   
**TO AVOID DAMAGING THE VEHICLE ALWAYS USE DRILL  
STOPS WHEN DRILLING ANY INSTALLATION HOLES!  
ADRIAN AVAILABLE PART #'S 31119-0 (3/8" X 1/2"  
DEEP), 31121-0 (1/2" x 1/2" DEEP)**



## - IMPORTANT WARRANTY REQUIREMENTS -

1. SUBSTITUTING ADRIAN STEEL SPECIFIED FASTENERS FOR ASSEMBLY AND/OR INSTALLATION WILL VOID YOUR PRODUCT WARRANTY.
2. ALL HOLES DRILLED INTO VEHICLE SHOULD HAVE THE RAW METAL EDGES SEALED WITH A SELF-ETCHING PRIMER TO RESIST CORROSION AND POTENTIAL FASTENER POINT FAILURE.
3. ALL FASTENERS USED IN THE INSTALLATION OF THIS PRODUCT SHOULD BE TIGHTENED TO THE TORQUE(S) SPECIFIED IN THESE INSTRUCTIONS.
4. THESE INSTRUCTIONS SHOULD BE KEPT WITH THE VEHICLE.

### THE BASIC TOOLS NEEDED FOR MOST INSTALLATIONS



DRILL



DRILL BIT WITH  
STOP



RATCHET, SOCKETS  
AND/OR WRENCHES



SCREWDRIVERS



MEASURING TAPE

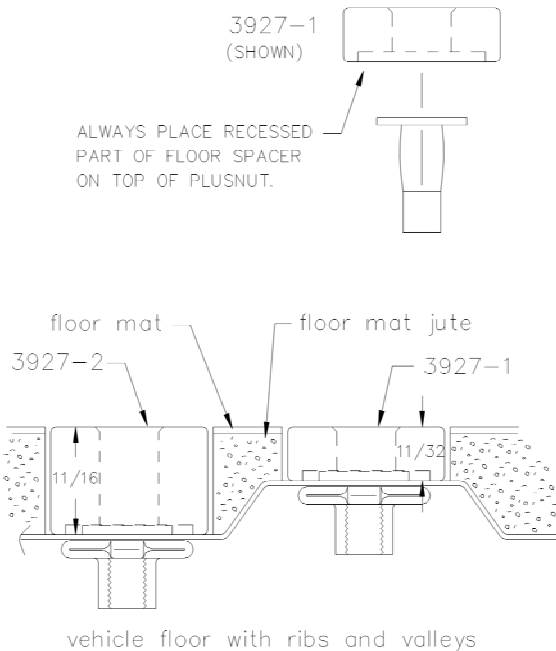
ADDITIONAL TOOLS MAY BE NEEDED FOR THIS INSTALLATION AND THEY WILL BE IDENTIFIED IN THE STEPS THAT FOLLOW.

If your vehicle contains carpet or a rubber floor mat you will need to prepare the mounting location. Position the product to be installed into the vehicle and once you are satisfied with the mounting locations, mark the mounting locations. Using a 1-3/16" diameter carpet cutter (P/N: 31183-0). Select the appropriate floor spacers as shown in the illustration. Set those aside for use later into the installation process.

Using the correct drill bit size for the selected plusnut, drill the mounting holes in the vehicle sheet metal to prepare for installing the plusnuts.

If you are thru-bolting at any of the locations simply drill a hole that is 1/16" larger than the bolt size(s) for those locations.

Once you have drilled the holes into the vehicle, the raw metal edges should be sealed using a self-etching primer to resist corrosion and potential fastener point failure.



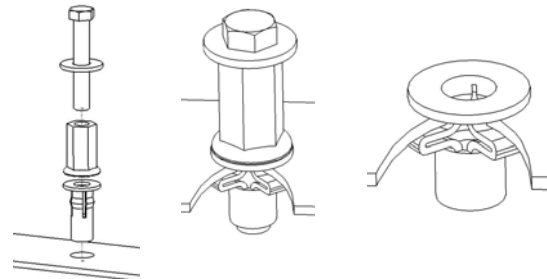
A PLUSNUT (RIVNUT) SETTING TOOL IS REQUIRED FOR PLUSNUT (RIVNUT) INSTALLATION . PLUS NUT SETTING TOOL CAN BE ORDERED THROUGH ADRIAN STEEL, OR USE AN AIR POWERED PLUSNUT SETTING GUN.

1/4-20UNC Plusnut (FAS0052) Use 3/8" dia. drill w/stop

FAS0080 SCREW, HXHD, 1/4-20UNCx2.00", G8  
FAS0067 WASHER, FLAT, 1/4"ID  
22200-0 PLUSNUT TOOL

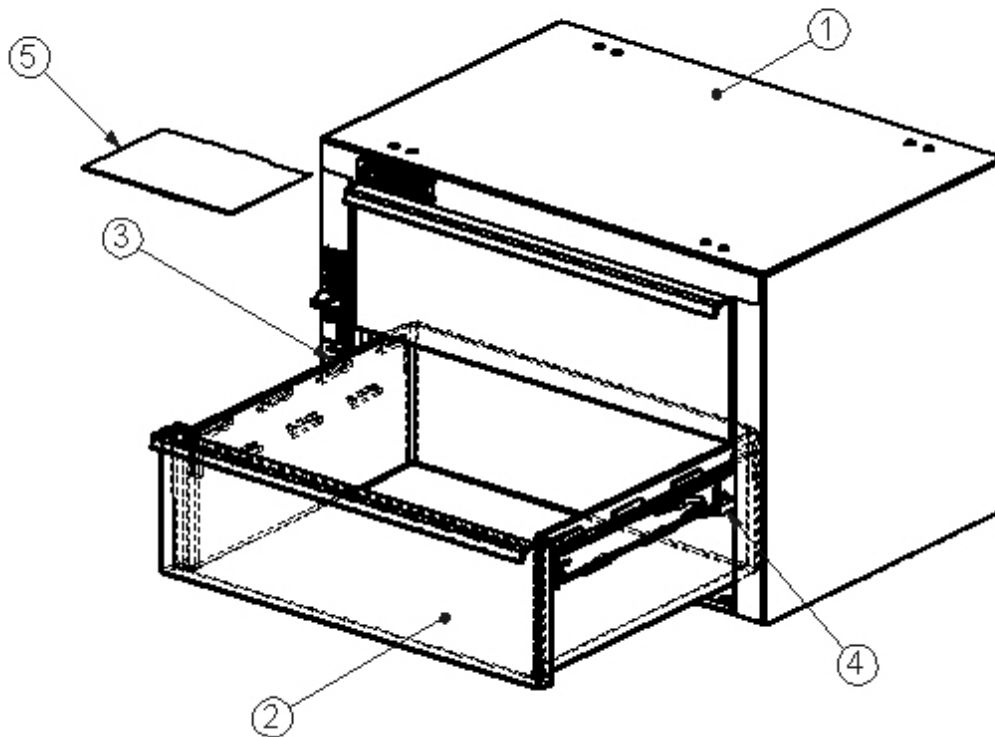
5/16-18UNC Plusnut (FAS0091) Use 1/2" dia. drill w/stop

FAS0095 SCREW, HXHD, 5/16-18UNCx2.00", G8  
FAS0086 WASHER, FLAT, 5/16"ID  
22200-0 PLUSNUT TOOL



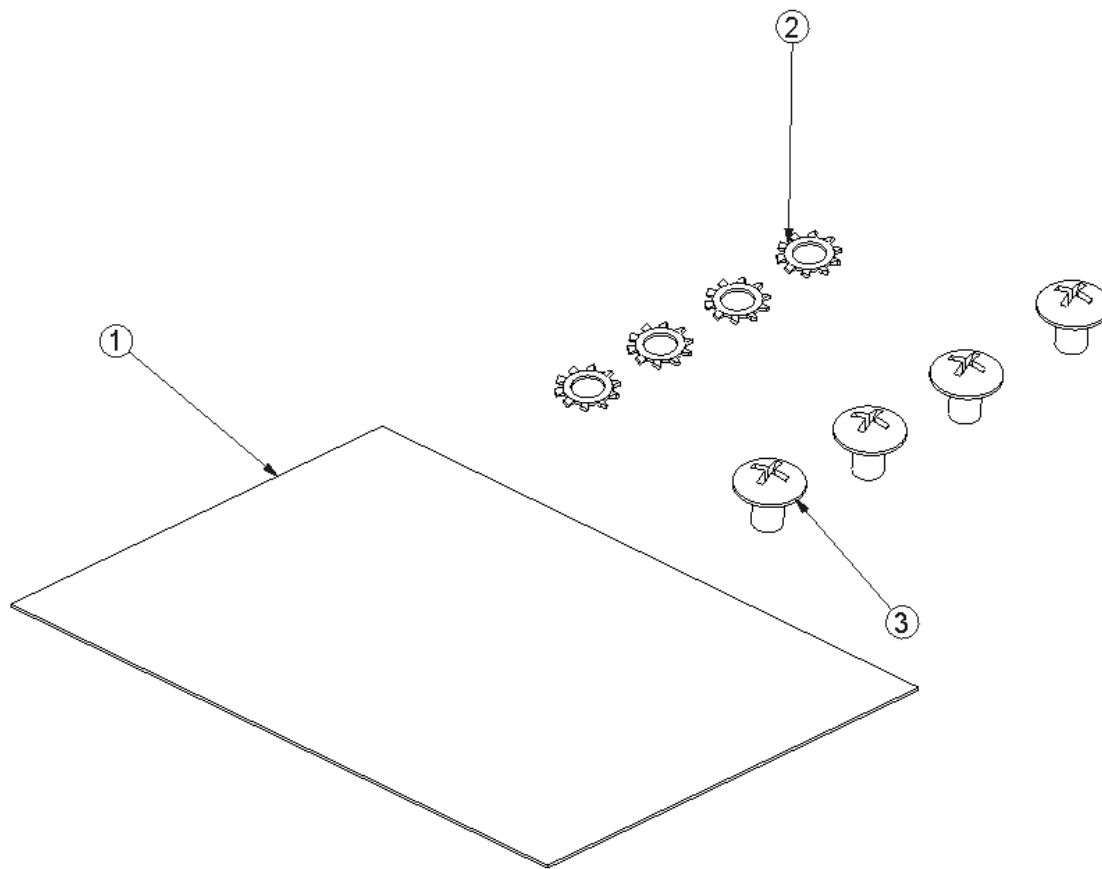
Place barrel of the plusnut body in sheet metal thru hole until flange is flush with sheet metal.

Using a 9/16" combination wrench of plusnut tool body and a second hand wrench, ratchet, or air tool, rotate the hex bolt head CW to draw plus nut flanges up (set the plusnut).

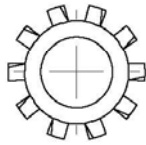


INSERT TWO (2) 40287-LH AND TWO (2) 40287-RH SLIDES INTO CABINET BODY.  
INSERT TWO (2) 40016 DRAWERS INTO CABINET BODY.  
PLACE BAG00001-0 INTO THE SECOND DRAWER. TAPE  
THE LOCK KEYS INTO THE FRONT RIGHT BOTTOM OF THE SECOND  
DRAWER AND CLOSE THE DRAWERS.

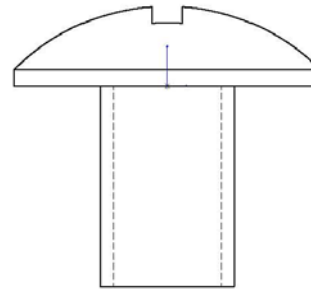
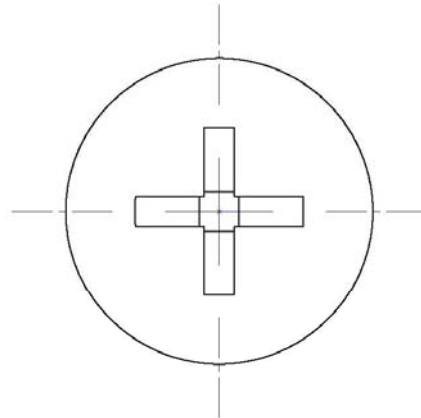
ITEM NO.	PART NUMBER	DESCRIPTION	BAG00001-0./QTY.
1	BAG0505-A	5" x 5" 3MIL AUTOBAG	1
2	FAS 0066	Washer, Lock, Ext. Tooth, 1/4	4
3	FAS0520	Screw, Truss Hd. Ph, 1/4-20x .375" lg	4



## Individual Fastener Images & Descriptions



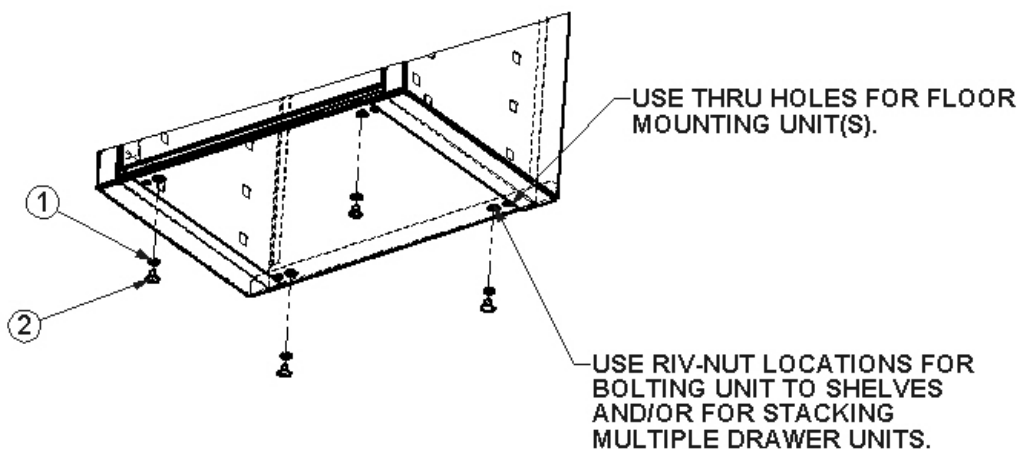
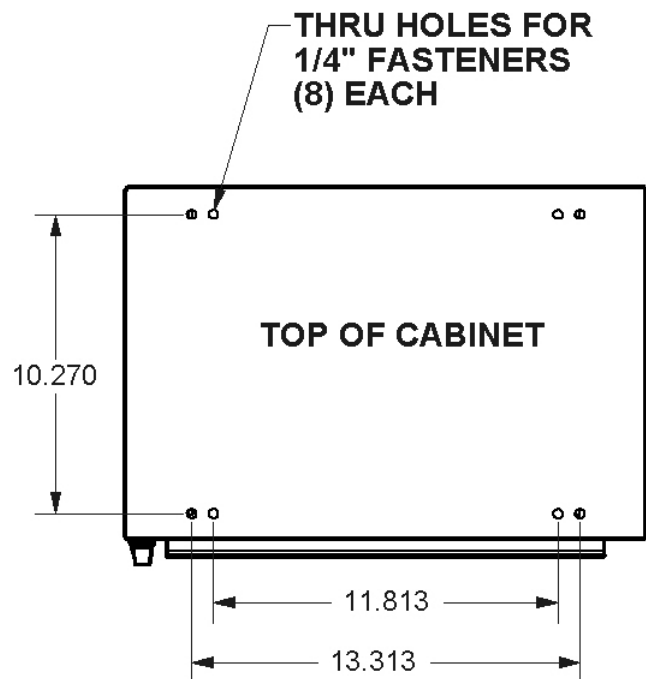
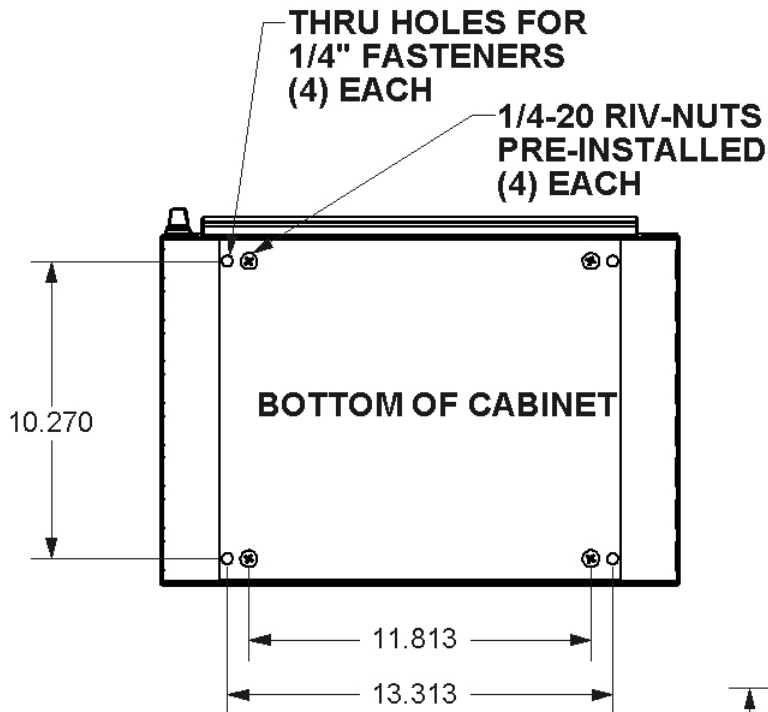
FAS0066  
WASHER,LCK EXT 1/4 ZP

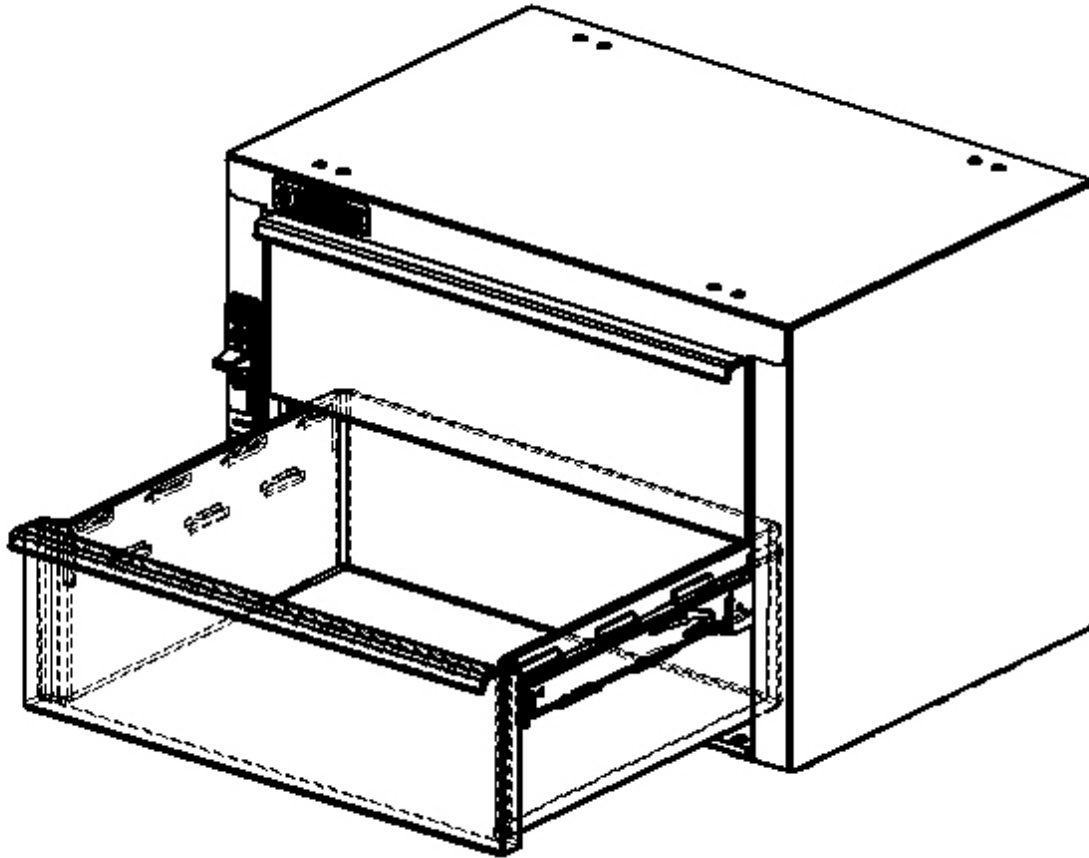


FAS0520  
SCREW,THP 1/4-20 X .38  
ZP



## Step 01 Methods of Attachment





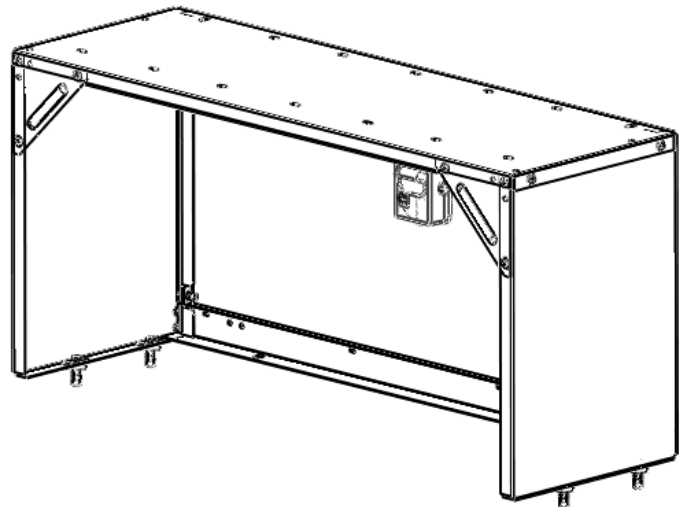
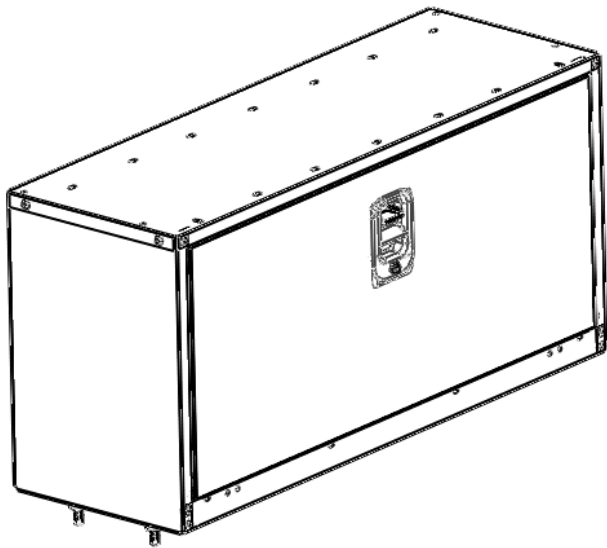
**DOUBLE CHECK ALL FASTENERS LOCATIONS TO BE SURE THAT ALL  
FASTENERS ARE TIGHTENED TO SPECIFICATIONS.  
YOUR INSTALLATION IS NOW COMPLETE!  
STOW THIS COPY IN THE VEHICLE FOR FUTURE REFERENCES!**

### Introduction / Comments:

This product (40H) is designed to be installed over the driver and/or passenger rear wheelhouse covers of the medium and high roof Promaster vehicles. The unit also provides internal storage and a mounting platform for additional modular cabinets.

#### **Note:**

It is advised that all fasteners used in this assembly and installation should be checked for tightness at the following intervals: @ 2-weeks and again @ 6-weeks of operation. This preventive maintenance step must be completed to ensure your Product gives you long service life.



## 40H WHEELHOUSE BIN, PROMASTER

## - PRECAUTIONS -





 **CAUTION**   
**THE USE OF AIR IMPACT TOOLS CAN  
OVER-TORQUE FASTENERS AND  
CAUSE FASTENER FAILURE!**



 **CAUTION**   
**ALL INSTALLATION HOLES SHOULD BE SEALED  
WITH SILICON OR BUTYL SEALANT TO PRE-  
VENT EXHAUST FUMES FROM ENTERING THE**



 **DANGER**   
**INSPECT FOR FUEL TANK, FUEL LINES, BRAKE LINES, HIGH  
VOLTAGE BATTERIES AND ELECTRICAL LINES PRIOR TO  
DRILLING TO AVOID DAMAGING CRITICAL VEHICLE SYS-  
TEMS OR INJURY TO INSTALLER DURING INSTALLATION**



 **CAUTION**   
**TO AVOID DAMAGING THE VEHICLE ALWAYS  
USE DRILL STOPS WHEN DRILLING ANY IN-  
STALLATION HOLES!**



## - IMPORTANT WARRANTY REQUIREMENTS -

1. SUBSTITUTING ADRIAN STEEL SPECIFIED FASTENERS FOR ASSEMBLY AND/OR INSTALLATION WILL VOID YOUR PRODUCT WARRANTY.
2. ALL HOLES DRILLED INTO VEHICLE SHOULD HAVE THE RAW METAL EDGES SEALED WITH A SELF-ETCHING PRIMER TO RESIST CORROSION AND POTENTIAL FASTENER POINT FAILURE.
3. ALL FASTENERS USED IN THE INSTALLATION OF THIS PRODUCT SHOULD BE TIGHTENED TO THE TORQUE(S) SPECIFIED IN THESE INSTRUCTIONS.
4. THESE INSTRUCTIONS SHOULD BE KEPT WITH THE VEHICLE.

## THE BASIC TOOLS NEEDED FOR MOST INSTALLATIONS



DRILL



DRILL BIT  
WITH STOP



RATCHET, SOCK-  
ETS AND/OR



SCREWDRIVERS



MEASURING TAPE

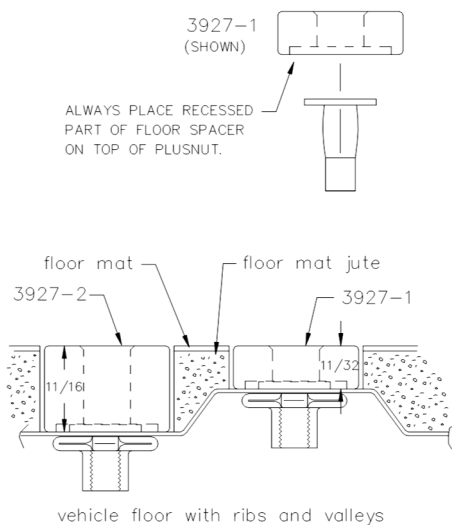
ADDITIONAL TOOLS MAY BE NEEDED FOR THIS INSTALLATION AND THEY WILL BE IDENTIFIED IN THE STEPS THAT FOLLOW.

If your vehicle contains carpet or a rubber floor mat you will need to prepare the mounting location. Position the product to be installed into the vehicle and once you are satisfied with the mounting locations, mark the mounting locations. Using a 1-3/16" diameter carpet cutter (P/N: 31183-0). Select the appropriate floor spacers as shown in the illustration. Set those aside for use later into the installation process. Using the correct drill bit size for the selected plusnut, drill the mounting holes in the vehicle sheet metal to prepare for installing the plusnuts.

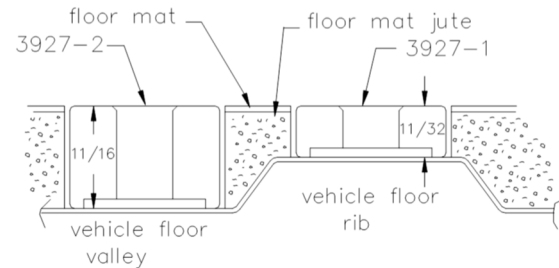
If you are thru-bolting at any of the locations simply drill a hole that is 1/16" larger than the bolt size(s) for those locations.

Once you have drilled the holes into the vehicle, the raw metal edges should be sealed using a self-etching primer to resist corrosion and potential fastener point failure.

### Spacer Use and Installation



Placing the properly sized spacer on top of the vehicle floor pan will make your Adrian interior level, square, and sound. The view below shows the proper sized spacer for the different heights of the vehicle floor. Make sure to place the spacers with the plusnut relief surface down as shown.



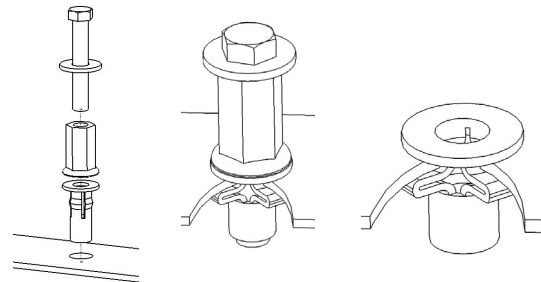
A PLUSNUT (RIVNUT) SETTING TOOL IS REQUIRED FOR PLUSNUT (RIVNUT) INSTALLATION AND IS SUPPLIED WITH THIS KIT. OR USE AN AIR POWERED PLUSNUT SETTING GUN.

#### 1/4-20UNC Plusnut (FAS0052) Use 3/8" dia. drill w/stop

FAS0080 SCREW, HXHD, 1/4-20UNCx2.00", G8  
FAS0067 WASHER, FLAT, 1/4"ID  
22200-0 PLUSNUT TOOL

#### 5/16-18UNC Plusnut (FAS0091) Use 1/2" dia. drill w/stop

FAS0095 SCREW, HXHD, 5/16-18UNCx2.00", G8  
FAS0086 WASHER, FLAT, 5/16"ID  
22200-0 PLUSNUT TOOL



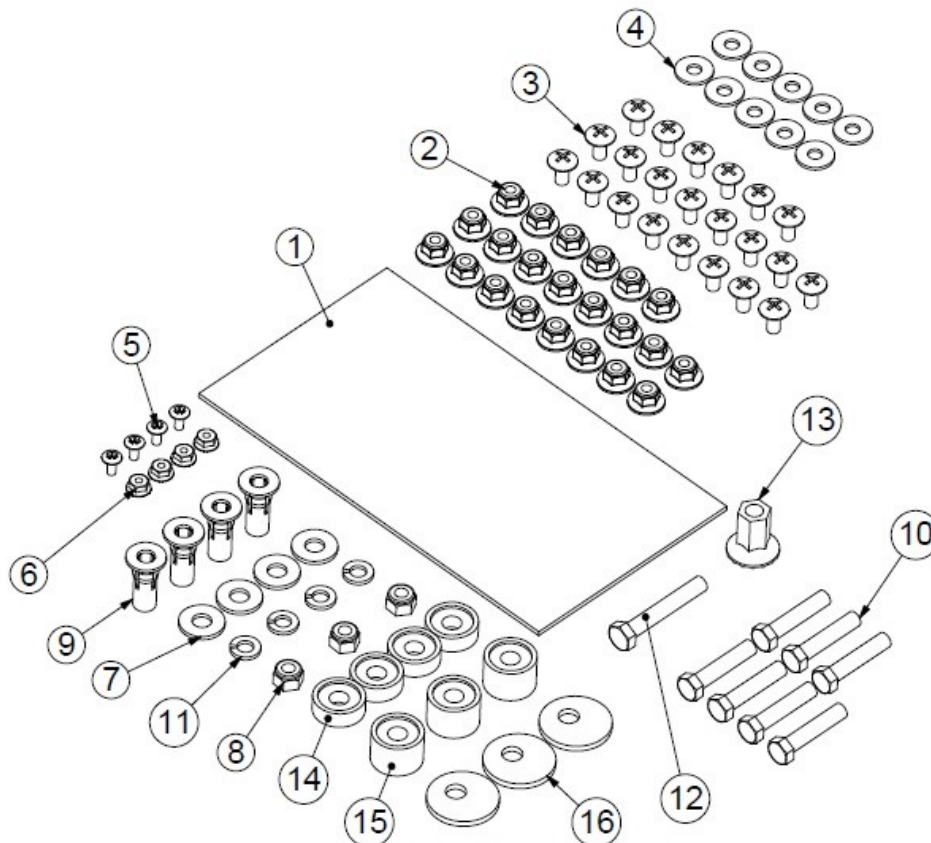
Place barrel of the plusnut body in sheet metal thru hole until flange is flush with sheet metal.

Using a 9/16" combination wrench of plusnut tool body and a second hand wrench, ratchet, or air tool, rotate the hex bolt head CW to draw plus nut flanges up (set the plusnut).



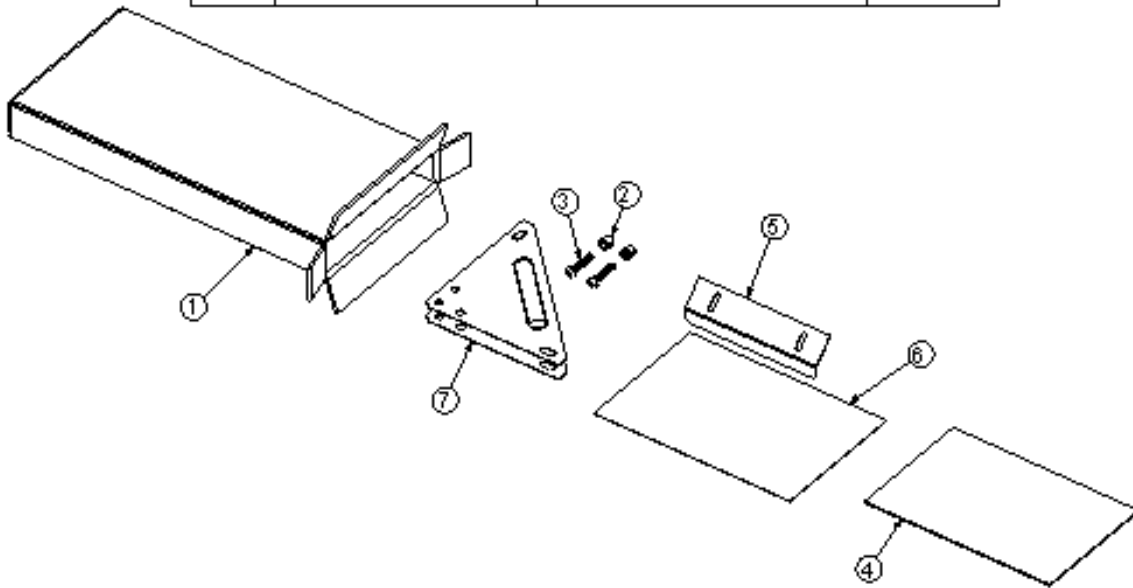
**Installation and/or Assembly Fasteners**  
**BAG00004-0**

ITEM NO.	PART NUMBER	DESCRIPTION	QTY.
1	BAG0509-A	5"X9" 4MIL AUTOBAG	1
2	FAS0055	NUT,HEX NLK FLG 1/4-20 ZP	22
3	FAS0061	Screw, Truss Hd. Ph, 1/4-20x0.50	22
4	FAS0067	WASHER,FLAT USS 1/4 ZP	10
5	FAS0001	Screw, Truss Hd. Ph, #8-32x0.38	4
6	FAS0013	Nut, Hex Flange, #8-32	4
7	FAS0086	WASHER,FLAT USS 5/16 ZP	4
8	FAS0090	NUT,HEX NLK 5/16-18 ZP	3
9	FAS0091	Plusnut, 5/16	4
10	FAS0092	Screw, Hex Hd, 5/16-18x1.50 Zn Plate, G8	7
11	FAS0098	Washer, Lock, Split, 5/16, Zinc Plate	4
12	FAS0602	Screw, Hex Hd, 5/16-18x2.00 Zn-Ni (1000 hour) Grade 8	1
13	22200-0	Plus Nut tool	1
14	03927-1	SPACER,FLR,1010,11/32 ZP	4
15	03927-2	SPACER, FLR, 1010, 11/16 ZP	3
16	21166-0	ECCENTRIC WASHER	3



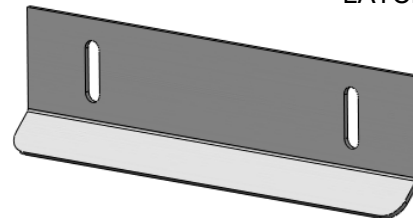
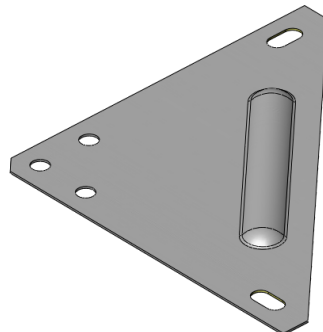
**Installation Hardware/Components**  
**HDW40H**

ITEM NO.	PART NUMBER	DESCRIPTION	HDW40/QT Y.
1	CRT06987-A	SMALL CARTON	1
2	40658	HEYCO #2030 BUSHING	2
3	FAS0786	1/4-20 X 1-1/4" BHCS SS	2
4	46536	INSTR, ASSEMBLY, 40H	1
5	46481-G	LATCH, DOOR, 40H, GRY	1
6	BAG00004-0	FASBAG FOR #40 BIN/KD	1
7	GS6X6	GUSSET 6"	2

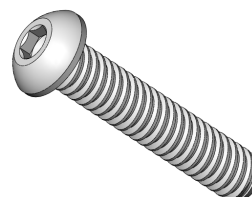


GS6X6  
GUSSET 6", GRY  
QTY = 2

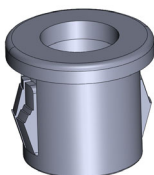
46481-G  
LATCH, DOOR, 40H



FAS0786  
SCREW, BHCS,  
1/4-20UNC X 1-1/4"  
QTY = 2

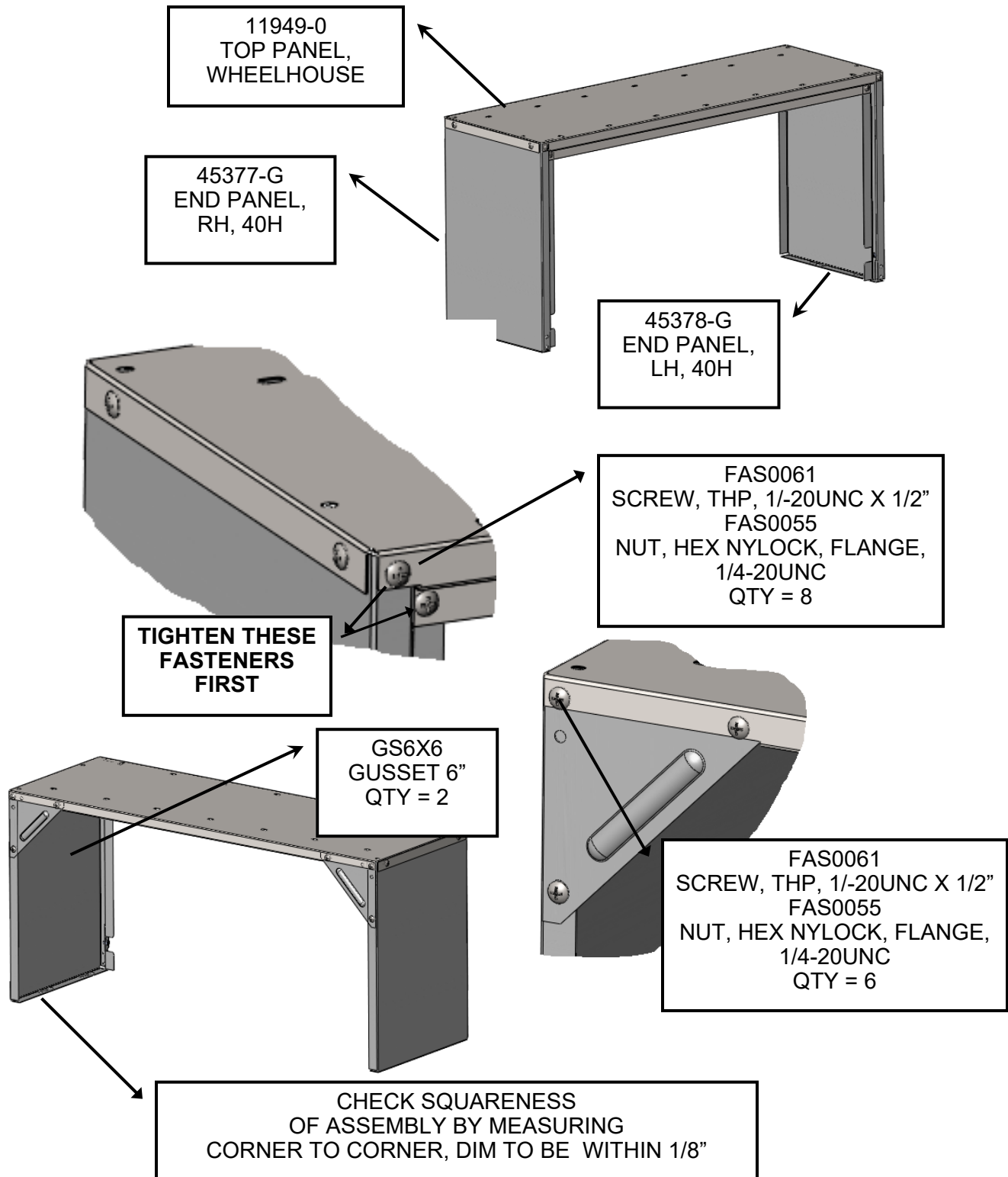


40658  
HEYCO #2030 BUSHING  
QTY = 2



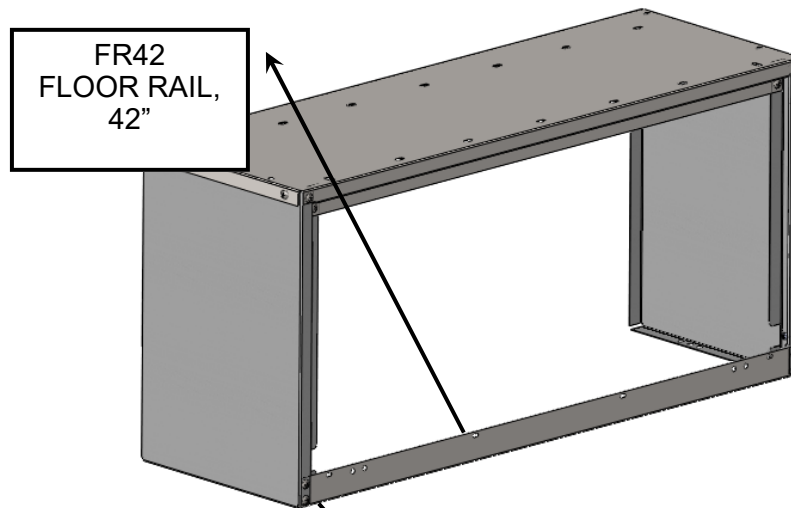
### STEP 01

**Secure LH & RH End Panels (45377-G & 45378-G) to the Top Panel (11949-0)  
Secure Support Gussets (GS6X6) to the end panels and top panel  
(use fasteners listed)**

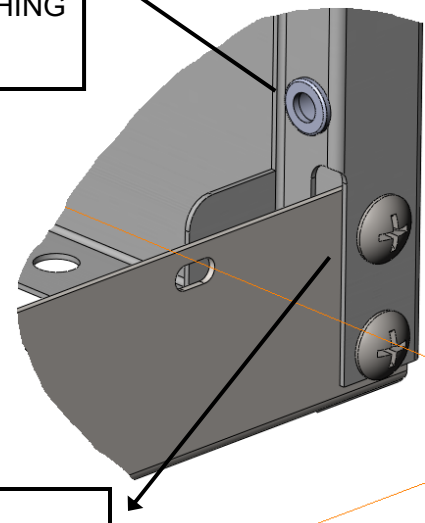
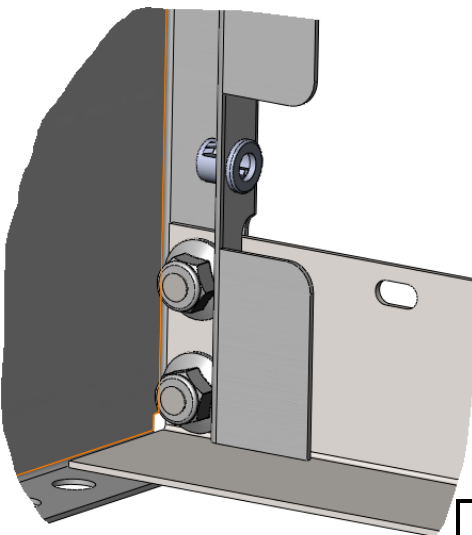




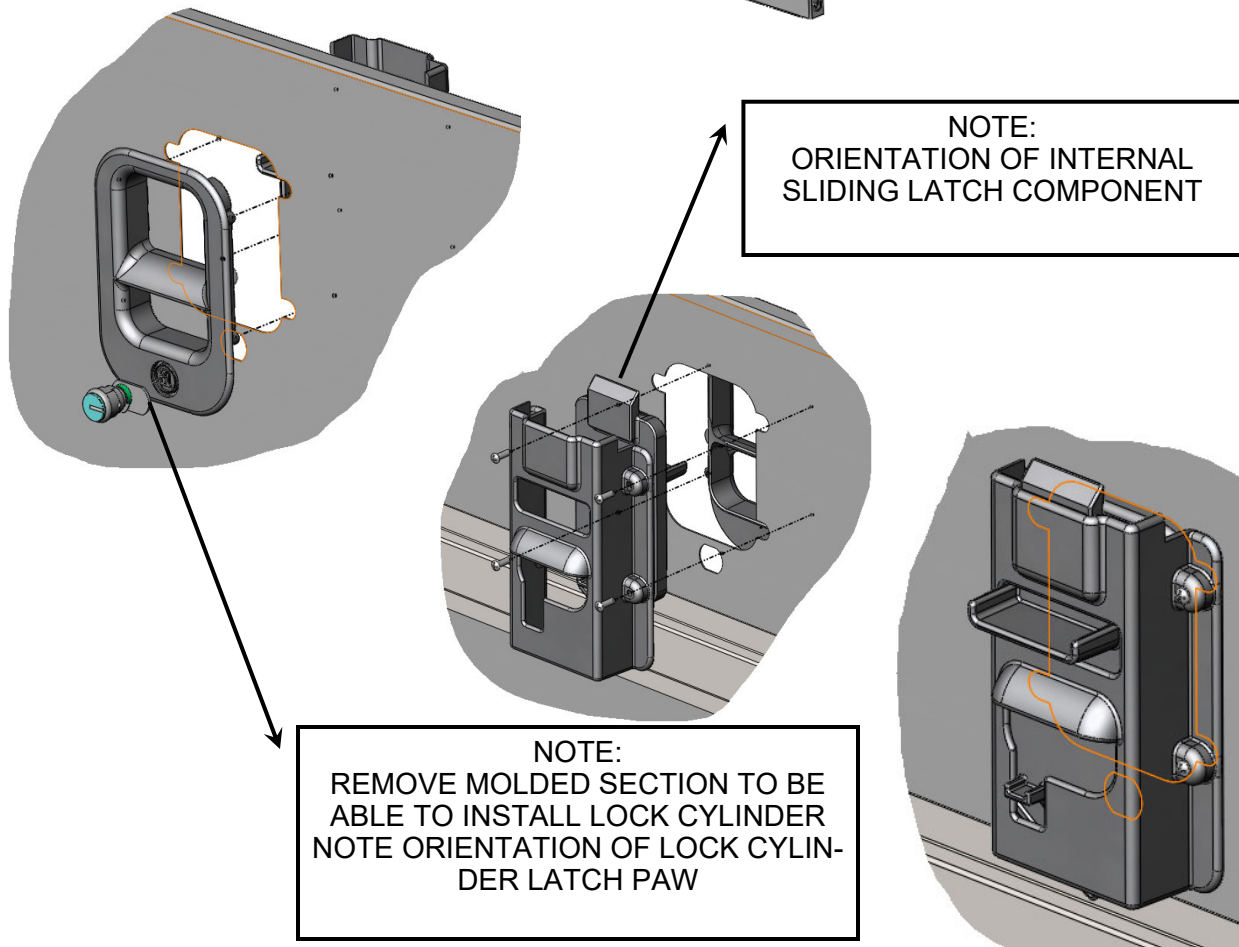
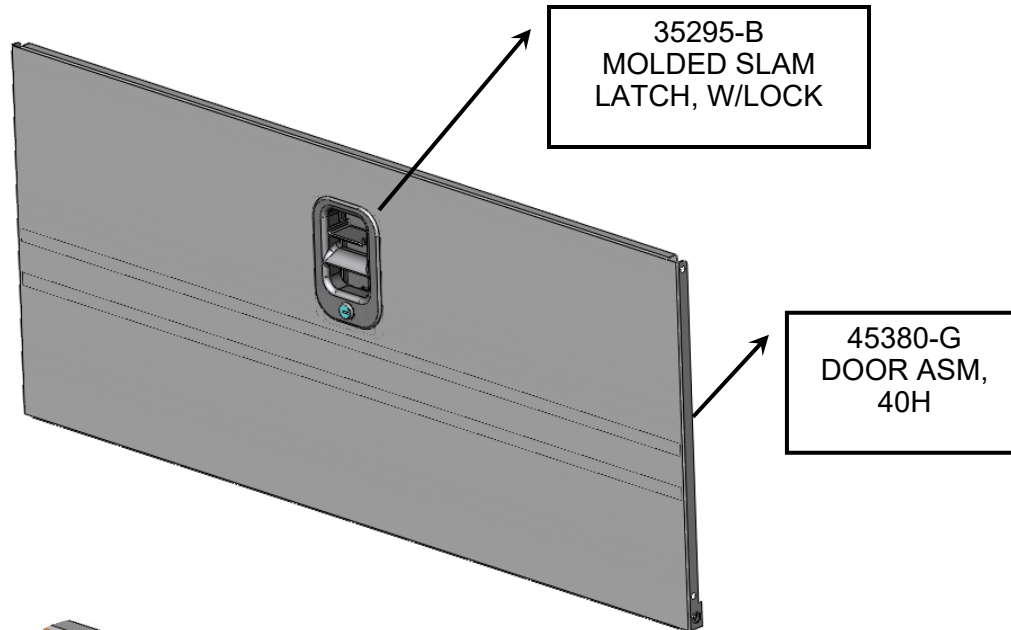
**STEP 02**  
**Install Floor Rail (FR42) to End Panels (fr: Step 01)**  
**Install Heyco #2330 Bushings (40658) into End Panels**  
**(use fasteners listed)**



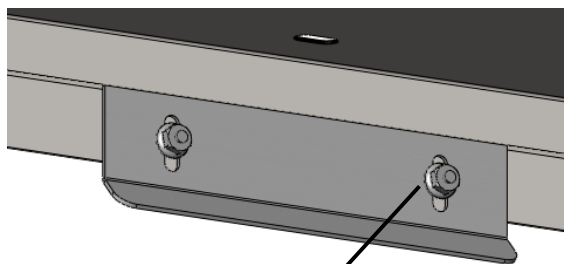
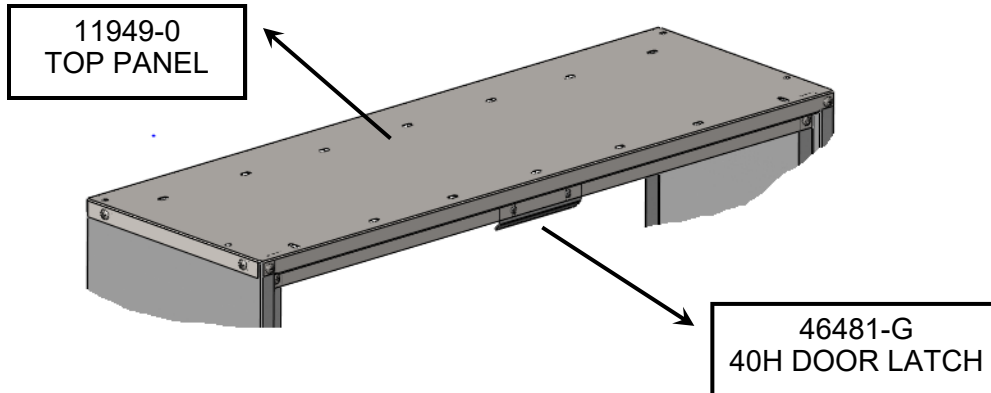
CHECK SQUARENESS  
OF ASSEMBLY BY MEASURING  
CORNER TO CORNER  
DIM TO BE WITHIN 1/8"



**STEP 03**  
**Install Door Molded Slam Latch (35295-B) with Lock Cylinder (25296-0)**  
**into Door Assembly (35380-G)**

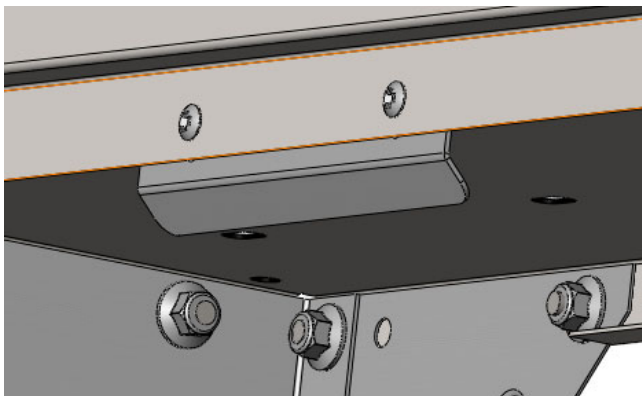
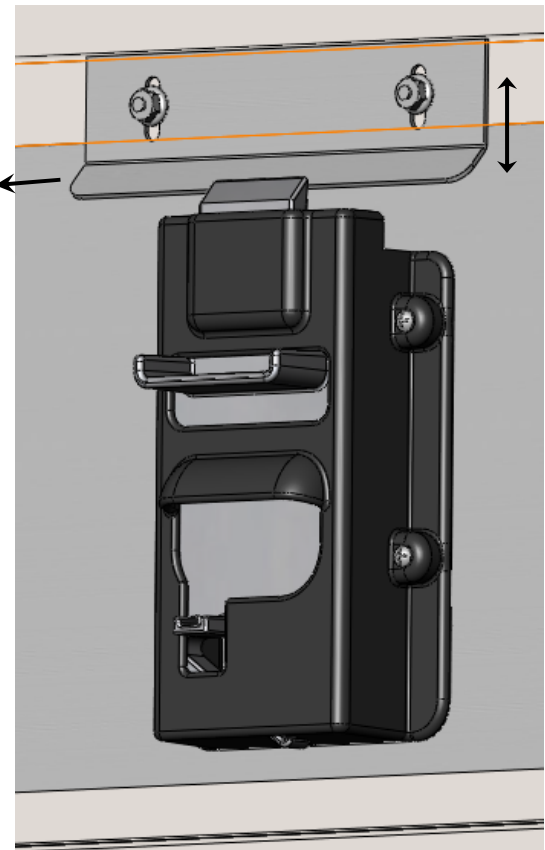


**STEP 04**  
**Attach Door Latch (46481-G) to the top panel (11949-0)**  
(use fasteners listed)

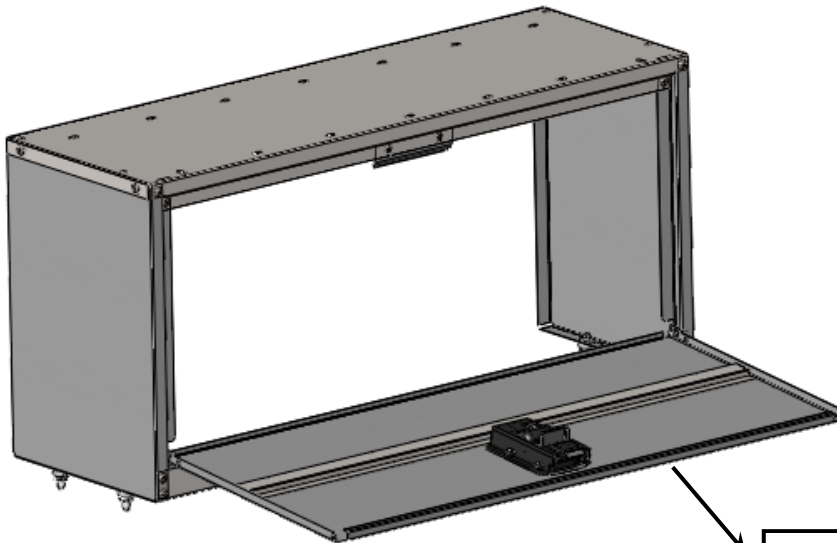


FAS0001  
SCREW, THP,  
#8-32UNC X 3/8"  
FAS0013  
NUT, HXFLNG,  
#8-32UNC  
QTY = 2

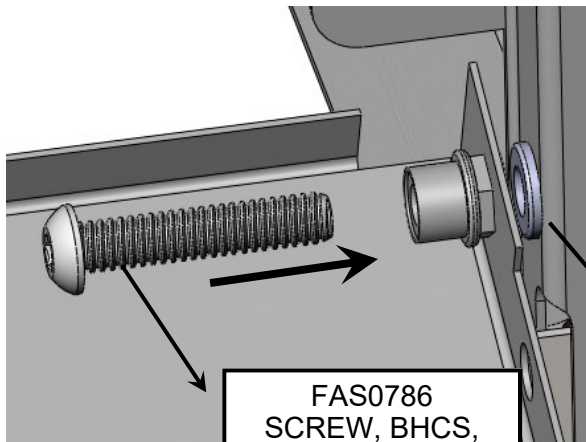
NOTE:  
POSITION OF  
DOOR LATCH MAY  
NEED ADJUSTING  
AFTER INSTALLA-  
TION OF DOOR  
ASM IN NEXT  
STEP



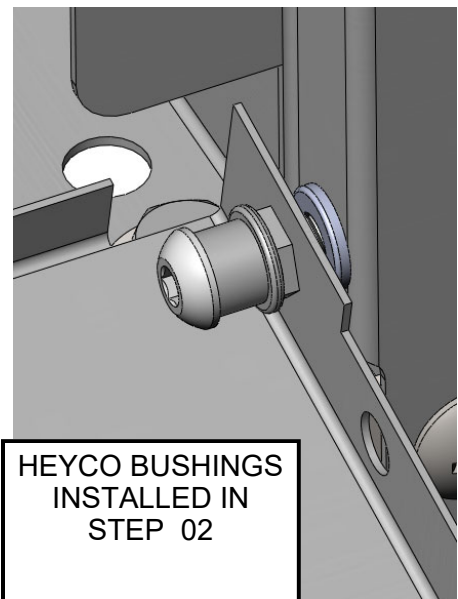
## STEP 05 Install Door Asm into Wheelhouse Bin



POSITION DOOR AS-  
SEMBLY AS SHOWN.  
SECURE TO SIDE END  
PANELS AS OUTLINED  
IN BOTTOM TWO VIEWS

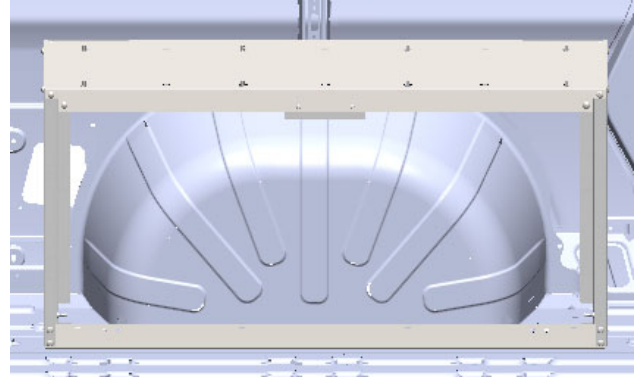
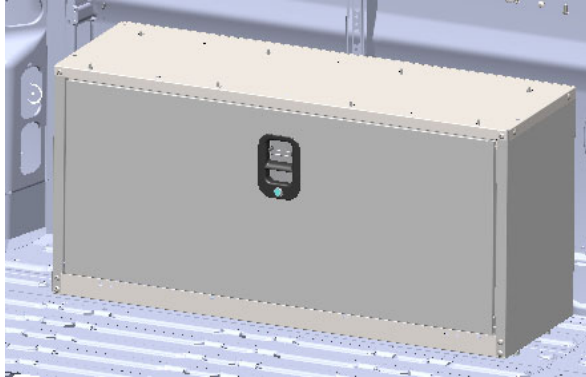


FAS0786  
SCREW, BHCS,  
1/4-20UNC X 1.25"  
QTY = 2



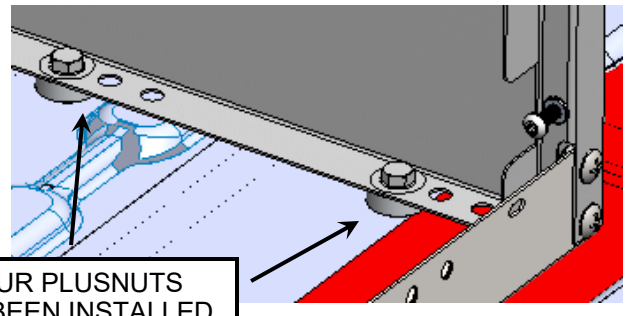
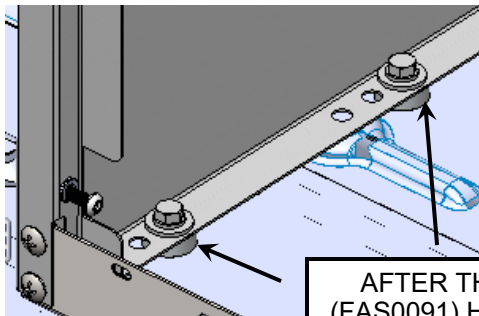
HEYCO BUSHINGS  
INSTALLED IN  
STEP 02

## STEP 06 INSTALLATION OF 40H WHEELHOUSE BIN INTO PROMASTER VEHICLE (Drivers side and/or Passengers side installation)



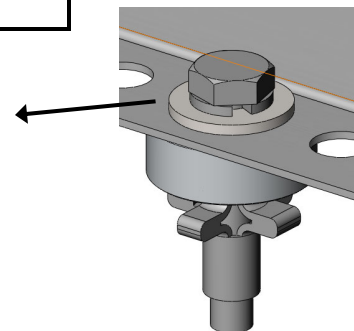
POSITION 40H WHEELHOUSE BIN AS SHOWN.  
CENTERED OVER OEM REAR WHEEL SHEET METAL.  
SEE PAGE 13 of 14 FOR OEM BRAKE LINE CAUTION

MARK THE FOUR FLOOR MOUNTING LOCATIONS INDICATED BELOW.  
SET WHEELHOUSE ASM ASIDE.  
INSTALL 5/16-18UNC PLUSNUTS (FAS0091) PER ASCO INSTRUCTIONS



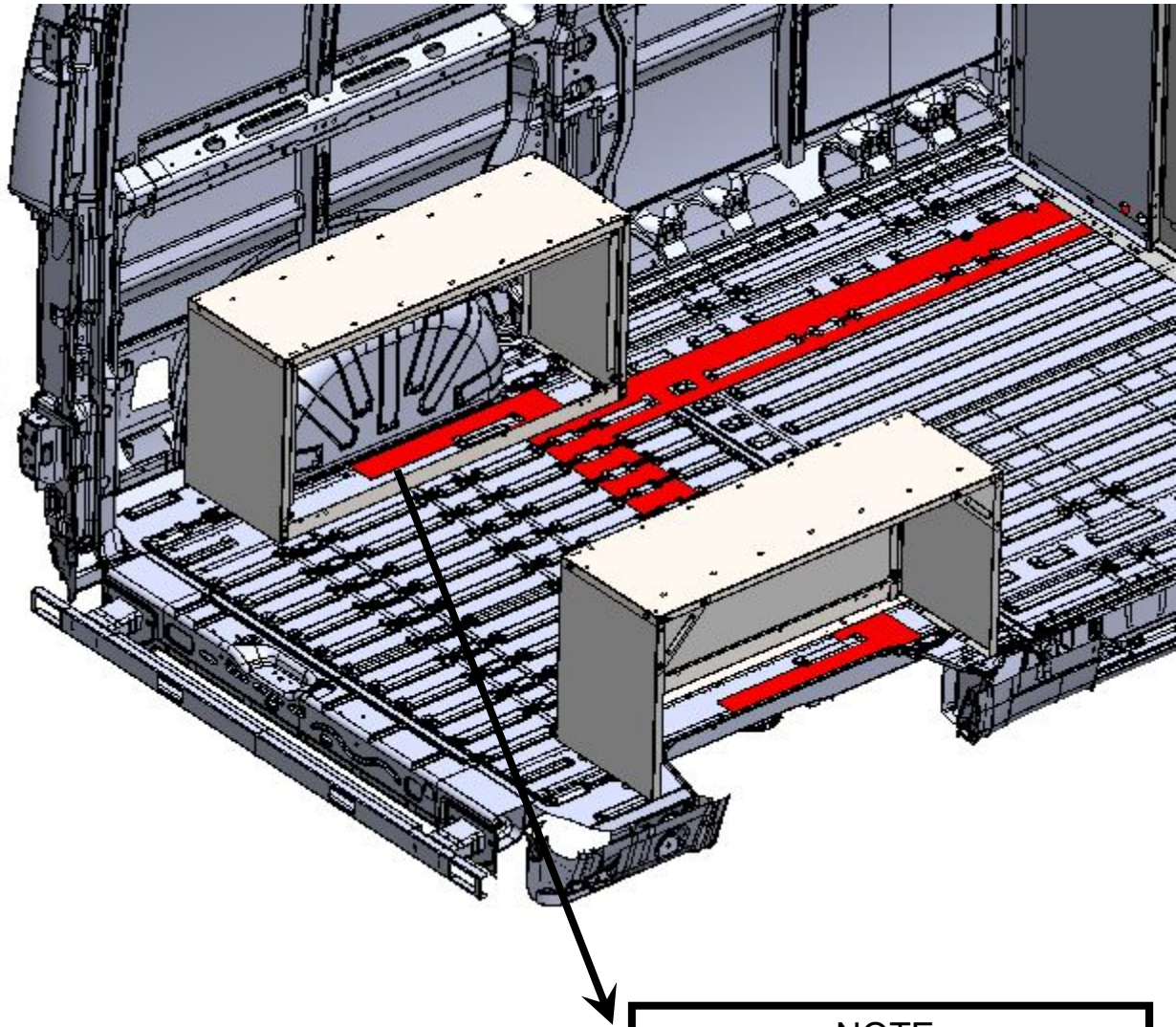
AFTER THE FOUR PLUSNUTS  
(FAS0091) HAVE BEEN INSTALLED  
RE-POSITION THE 40H OVER THE  
PLUSNUTS AND SECURE 40H  
WITH FASTENERS INDICATED

FAS0091 5/16-18UNC PLUSNUT  
FAS0098 WASHER, SPLTLK, 5/16" ID  
FAS0086 WASHER, FLAT, 5/16" ID  
03927-1 SPACER, FLR, 11/32  
FAS0092 SCREW, HX HD, G8, 5/16-18UNC X 1.50"  
QTY = 4



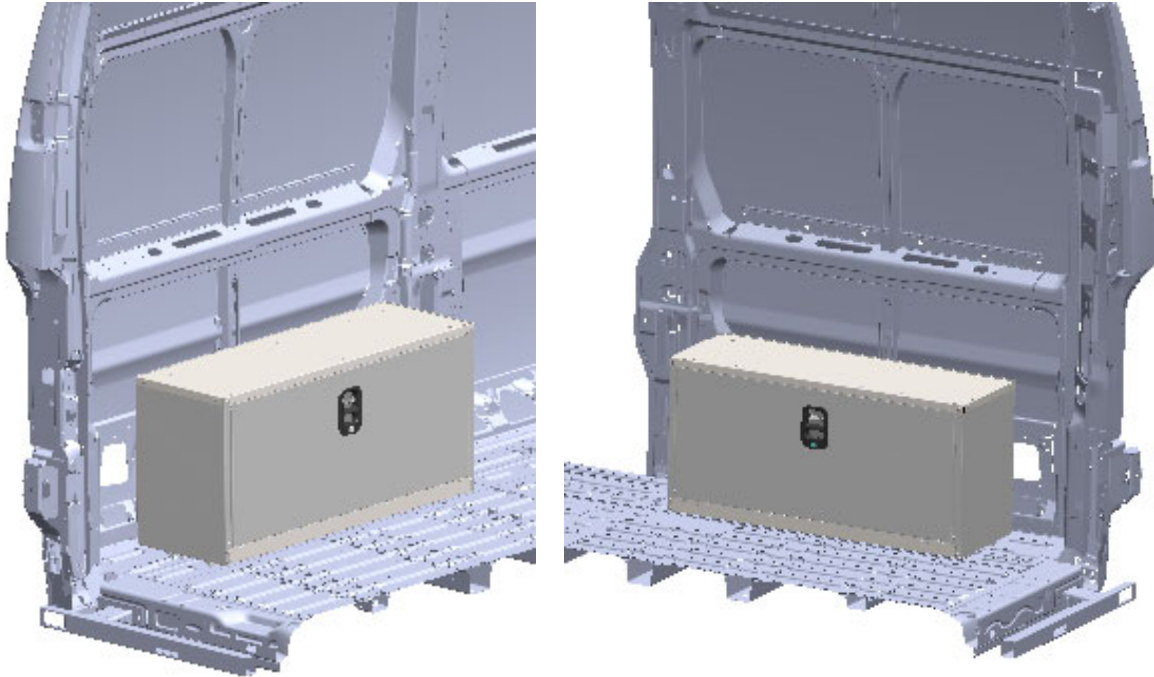


**STEP 06**  
**INSTALLATION OF 40H WHEELHOUSE BIN INTO PROMASTER VEHICLE**  
OEM BRAKE LINE ROUTING CAUTION



**NOTE:**  
DO NOT DRILL IN THIS AREA  
OEM BRAKE LINES  
LOCATED IN SHADED AREA

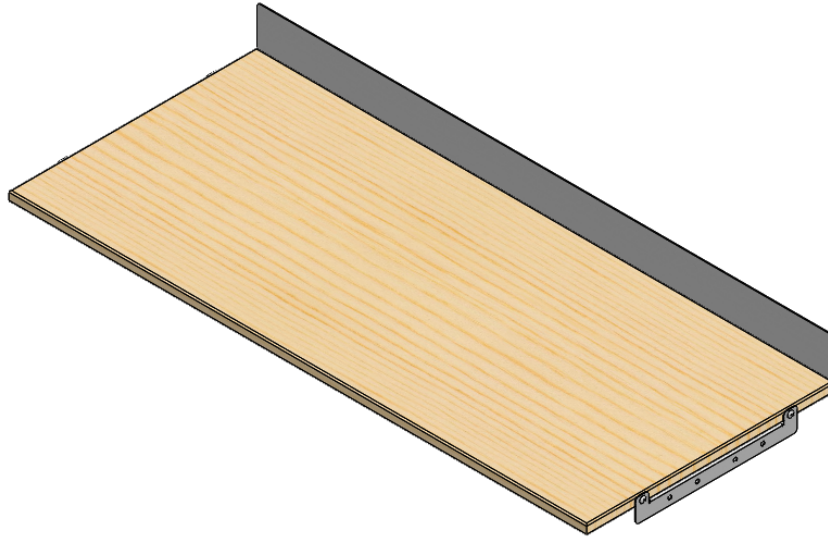
**STEP 07**  
**Final Tightening of all fasteners.**



**DOUBLE CHECK ALL FASTENERS LOCATIONS TO BE SURE  
THAT ALL FASTENERS ARE TIGHTENED TO SPECIFICATIONS.**

**YOUR INSTALLATION IS NOW COMPLETE!  
STOW THIS COPY IN THE VEHICLE FOR  
FUTURE REFERENCES!**

## Workbench Top 18" X 42"



**PRODUCT WEIGHT**

11 lbs

**WIDTH x DEPTH x HEIGHT**

42" X 18" X 3 5/8"

**CAPACITY**

N/A

**COLOR**

BALTIC BIRCH / GRAY

**CATALOG NUMBER**

60105

**PRODUCT FEATURES**

**This Workbench top is designed to mount atop any 12X42 module arrangement and/or framework of KD parts**

**Some drilling may be required.**

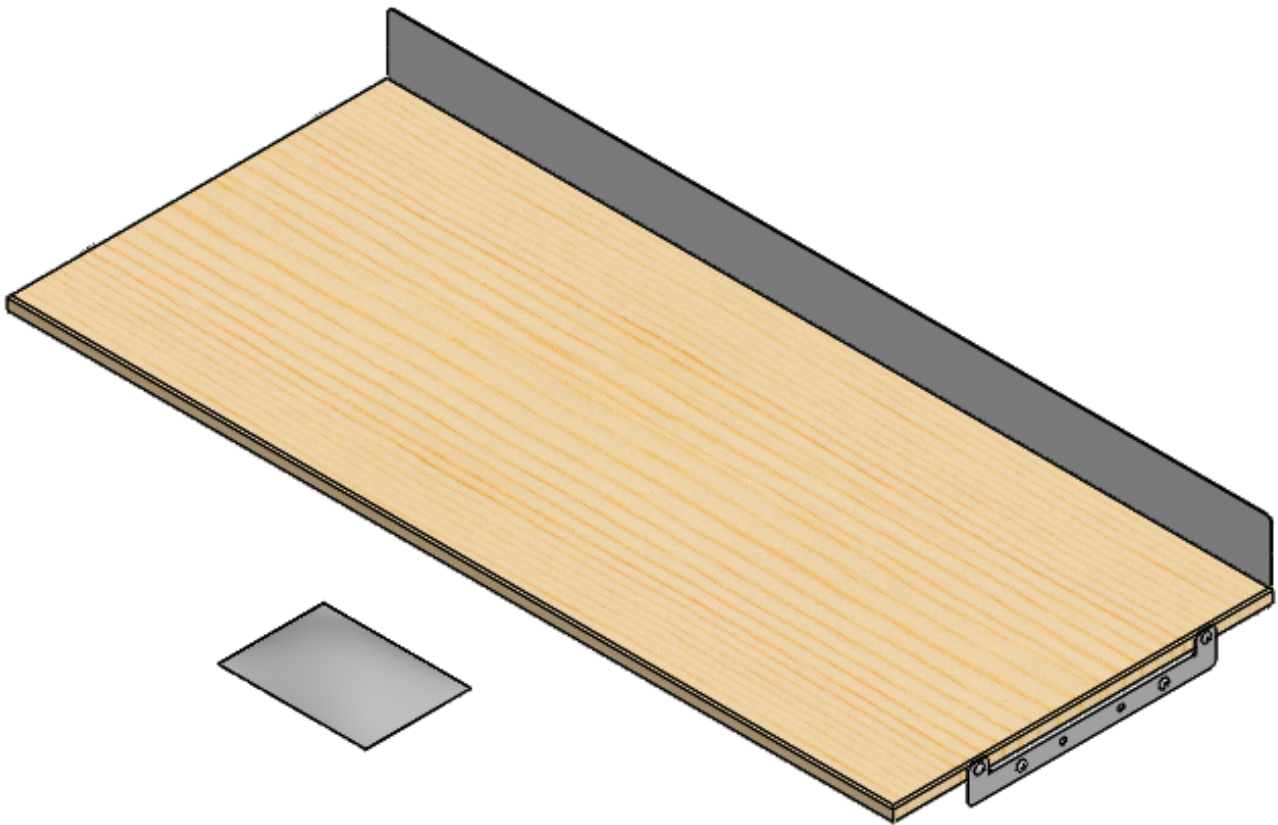




**ADRIAN STEEL®**

*Cargo Management Solutions for Commercial Vehicles*

## Assembly/Installation Instructions and Owners Manual



### **60105** **WORKBENCH TOP 18" x 42"**

## - PRECAUTIONS -





 **CAUTION**   
**THE USE AIR IMPACT TOOLS CAN  
OVER-TORQUE FASTENERS AND  
CAUSE FASTENER FAILURE!**



 **CAUTION**   
**ALL INSTALLATION HOLES SHOULD BE SEALED  
WITH SILICON OR BUTYL SEALANT TO PREVENT  
EXHAUST FUMES FROM ENTERING THE VEHICLE!**



 **DANGER**   
**INSPECT FOR FUEL TANK, FUEL LINES, BRAKE LINES, HIGH  
VOLTAGE BATTERIES AND ELECTRICAL LINES PRIOR TO  
DRILLING TO AVOID DAMAGING CRITICAL VEHICLE SYSTEMS  
OR INJURY TO INSTALLER DURING INSTALLATION PROCESS!**



 **CAUTION**   
**TO AVOID DAMAGING THE VEHICLE ALWAYS  
USE DRILL STOPS WHEN DRILLING ANY IN-  
STALLATION HOLES!**



## - IMPORTANT WARRANTY REQUIREMENTS -

1. SUBSTITUTING ADRIAN STEEL SPECIFIED FASTENERS FOR ASSEMBLY AND/OR INSTALLATION WILL VOID YOUR PRODUCT WARRANTY.
2. ALL HOLES DRILLED INTO VEHICLE SHOULD HAVE THE RAW METAL EDGES SEALED WITH A SELF-ETCHING PRIMER TO RESIST CORROSION AND POTENTIAL FASTENER POINT FAILURE.
3. ALL FASTENERS USED IN THE INSTALLATION OF THIS PRODUCT SHOULD BE TIGHTENED TO THE TORQUE(S) SPECIFIED IN THESE INSTRUCTIONS.
4. THESE INSTRUCTIONS SHOULD BE KEPT WITH THE VEHICLE.

### THE BASIC TOOLS NEEDED FOR MOST INSTALLATIONS



DRILL



DRILL BIT WITH  
STOP



RATCHET, SOCKETS  
AND/OR WRENCHES



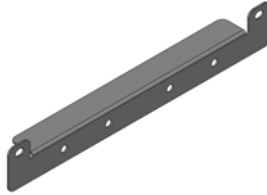
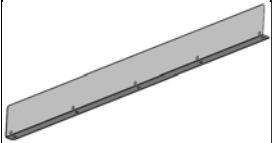



SCREWDRIVERS

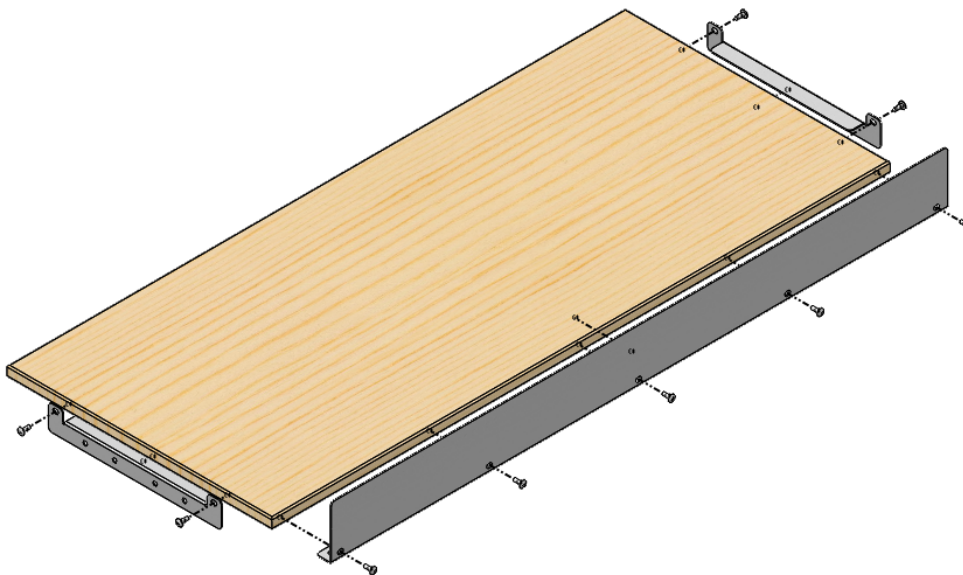


MEASURING TAPE

ADDITIONAL TOOLS MAY BE NEEDED FOR THIS INSTALLATION AND THEY WILL BE IDENTIFIED IN THE STEPS THAT FOLLOW.

<b>PARTS YOU WILL USE FOR</b>  <b>STEP 01</b>	FAS0691, SCREW, THP T(13) REQUIRED	PHILLIPS HEAD DRILL	60102-G, WORKBENCH SIDE BRACKET, GRAY	60100-G, WORKBENCH BACK RAIL, GRAY
				
	60101, RUSSIAN BIRCH 18 X 42			
				

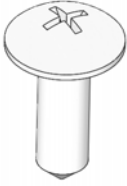

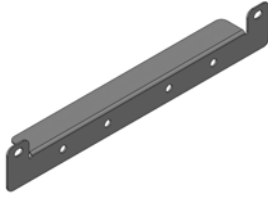
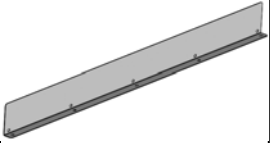

## Instructions for Step 01



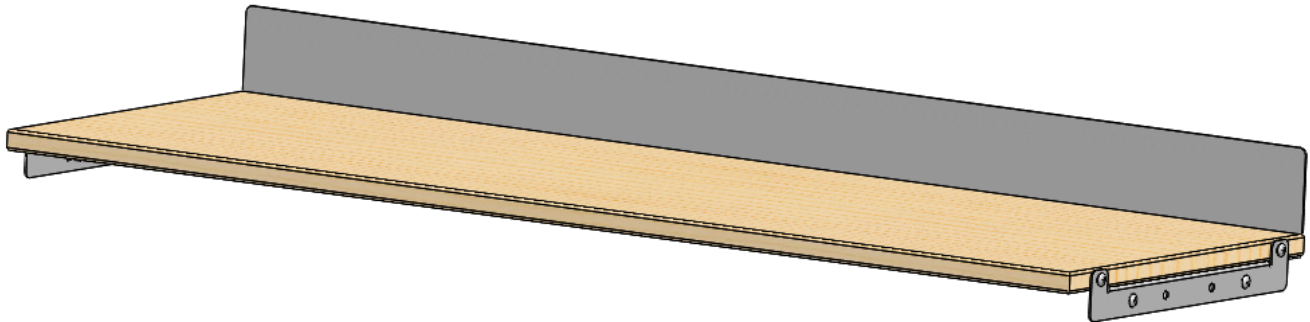
Install 60100-G back rail to 60101 Russian Birch using FAS0691 (x5).

Install 60102-G side bracket to each end of 60101 Russian Birch; Install side brackets based upon desired lip length.

There should be four (4) FAS0691 Screw, THP TEK left over in which you may use to install workbench top to supporting structure.

<b>PARTS YOU WILL USE FOR</b>  <b>STEP 01</b>	FAS0691, SCREW, THP T(13) REQUIRED	PHILLIPS HEAD DRILL	60102-G, WORKBENCH SIDE BRACKET, GRAY	60100-G, WORKBENCH BACK RAIL, GRAY
				
	60101, RUSSIAN BIRCH 18 X 42			
				

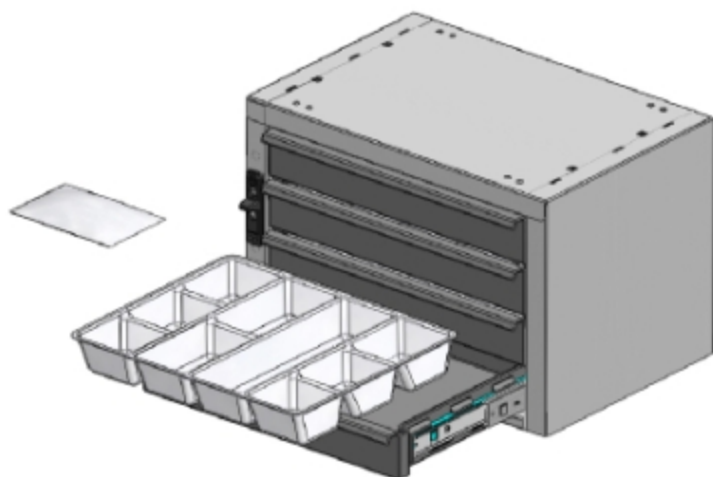
## INSTALLATION COMPLETE



**ADRIAN STEEL**

Cargo Management Solutions for Commercial Vehicles

## 9, 4-DRAWER SHALLOW

*PRODUCT WEIGHT***27.7 lbs.***WIDTH x DEPTH x HEIGHT***18 x 12 x 12***CAPACITY***15 LBS. PER DRAWER***COLOR***GRAY***CATALOG NUMBER***9***PRODUCT FEATURES*

The drawer unit body is a sturdy welded and painted steel housing. The housing has ¼-20 riv-nuts installed into the base of the unit for easy installation. Also included are pre-drilled mounting holes in the top of the cabinet to allow for quick and easy stacking of the units. The number 9 drawer unit includes four (4) polymer drawers that ride on full extension ball bearing glides. The drawers have an inside dimension of 13.50" wide X 2.0" tall X 11.50" deep. The drawers include a removable divider tray for storing smaller parts. Each cabinet includes a sliding latch/lock system designed to secure the drawers during vehicle movement. A cam lock allows for securing your inventory for more security.

*PRODUCT APPLICATION*

This product is designed to be used in and/or on ADRIAN STEEL shelving units and can also be used as a standalone product. The product is great for small parts and supplies storage.

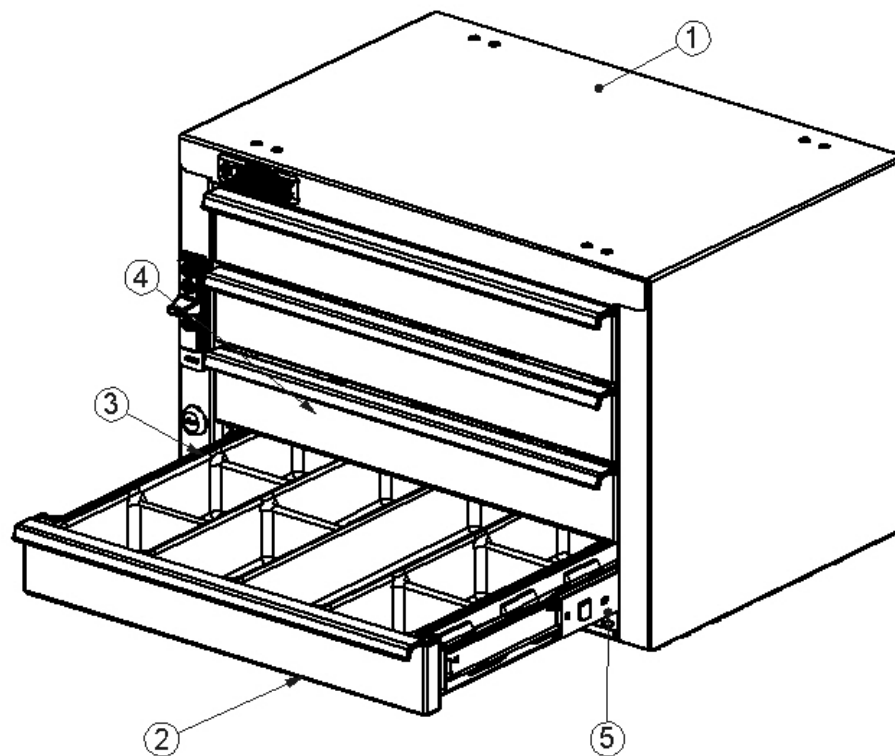
### Introduction / Comments:

The drawer unit body is a sturdy welded and painted steel housing. 4 polymer drawers ride on ball bearing glides. The drawer include a removable divider tray for storing small items. Each cabinet includes a sliding latch/lock system designed to secure the drawers during vehicle movement.

### **Note:**

It is advised that all fasteners used in this assembly and installation should be checked for tightness at the following intervals: @ 2-weeks and again @ 6-weeks of operation. This preventive maintenance step must be completed to ensure your Product gives you long service life.

ITEM NO.	PART NUMBER	DESCRIPTION	9/QTY.
1	39197-G	WRAPPER BODY ASSM	1
2	40015	DRAWER SUB ASSY. #9/919	4
3	26105-0	Divider Tray 9/919	4
4	40827-LH	250MM SLIDE, CABINET HALF, LH	4
5	40287-RH	250MM SLIDE, CABINET HALF, RH	4
6	BAG00001-0	FASTENER BAG 9,19,919	1



## 9 4 DRAWER UNIT



## - PRECAUTIONS -





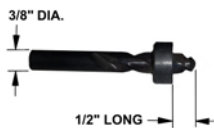
 **CAUTION**   
**THE USE OF AIR IMPACT TOOLS CAN  
OVER-TORQUE FASTENERS AND  
CAUSE FASTENER FAILURE!**





 **CAUTION**   
**ALL INSTALLATION HOLES SHOULD BE SEALED  
WITH SILICON OR BUTYL SEALANT TO PREVENT  
EXHAUST FUMES FROM ENTERING THE VEHICLE!**



 **DANGER**   
**INSPECT FOR FUEL TANK, FUEL LINES, BRAKE LINES, HIGH  
VOLTAGE BATTERIES AND ELECTRICAL LINES PRIOR TO  
DRILLING TO AVOID DAMAGING CRITICAL VEHICLE SYSTEMS  
OR INJURY TO INSTALLER DURING INSTALLATION PROCESS!**



 **CAUTION**   
**TO AVOID DAMAGING THE VEHICLE ALWAYS USE DRILL  
STOPS WHEN DRILLING ANY INSTALLATION HOLES!  
ADRIAN AVAILABLE PART #'S 31119-0 (3/8" X 1/2"  
DEEP), 31121-0 (1/2" x 1/2" DEEP)**



## - IMPORTANT WARRANTY REQUIREMENTS -

1. SUBSTITUTING ADRIAN STEEL SPECIFIED FASTENERS FOR ASSEMBLY AND/OR INSTALLATION WILL VOID YOUR PRODUCT WARRANTY.
2. ALL HOLES DRILLED INTO VEHICLE SHOULD HAVE THE RAW METAL EDGES SEALED WITH A SELF-ETCHING PRIMER TO RESIST CORROSION AND POTENTIAL FASTENER POINT FAILURE.
3. ALL FASTENERS USED IN THE INSTALLATION OF THIS PRODUCT SHOULD BE TIGHTENED TO THE TORQUE(S) SPECIFIED IN THESE INSTRUCTIONS.
4. THESE INSTRUCTIONS SHOULD BE KEPT WITH THE VEHICLE.

### THE BASIC TOOLS NEEDED FOR MOST INSTALLATIONS



DRILL



DRILL BIT WITH  
STOP



RATCHET, SOCKETS  
AND/OR WRENCHES



SCREWDRIVERS



MEASURING TAPE

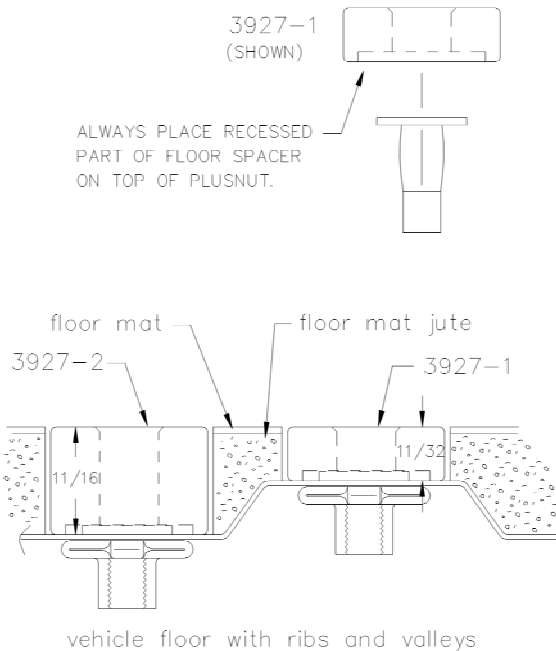
ADDITIONAL TOOLS MAY BE NEEDED FOR THIS INSTALLATION AND THEY WILL BE IDENTIFIED IN THE STEPS THAT FOLLOW.

If your vehicle contains carpet or a rubber floor mat you will need to prepare the mounting location. Position the product to be installed into the vehicle and once you are satisfied with the mounting locations, mark the mounting locations. Using a 1-3/16" diameter carpet cutter (P/N: 31183-0). Select the appropriate floor spacers as shown in the illustration. Set those aside for use later into the installation process.

Using the correct drill bit size for the selected plusnut, drill the mounting holes in the vehicle sheet metal to prepare for installing the plusnuts.

If you are thru-bolting at any of the locations simply drill a hole that is 1/16" larger than the bolt size(s) for those locations.

Once you have drilled the holes into the vehicle, the raw metal edges should be sealed using a self-etching primer to resist corrosion and potential fastener point failure.



A PLUSNUT (RIVNUT) SETTING TOOL IS REQUIRED FOR PLUSNUT (RIVNUT) INSTALLATION . PLUS NUT SETTING TOOL CAN BE ORDERED THROUGH ADRIAN STEEL, OR USE AN AIR POWERED PLUSNUT SETTING GUN.

1/4-20UNC Plusnut (FAS0052) Use 3/8" dia. drill w/stop

FAS0080 SCREW, HXHD, 1/4-20UNCx2.00", G8

FAS0067 WASHER, FLAT, 1/4"ID

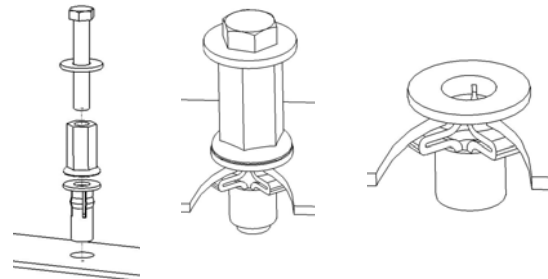
22200-0 PLUSNUT TOOL

5/16-18UNC Plusnut (FAS0091) Use 1/2" dia. drill w/stop

FAS0095 SCREW, HXHD, 5/16-18UNCx2.00", G8

FAS0086 WASHER, FLAT, 5/16"ID

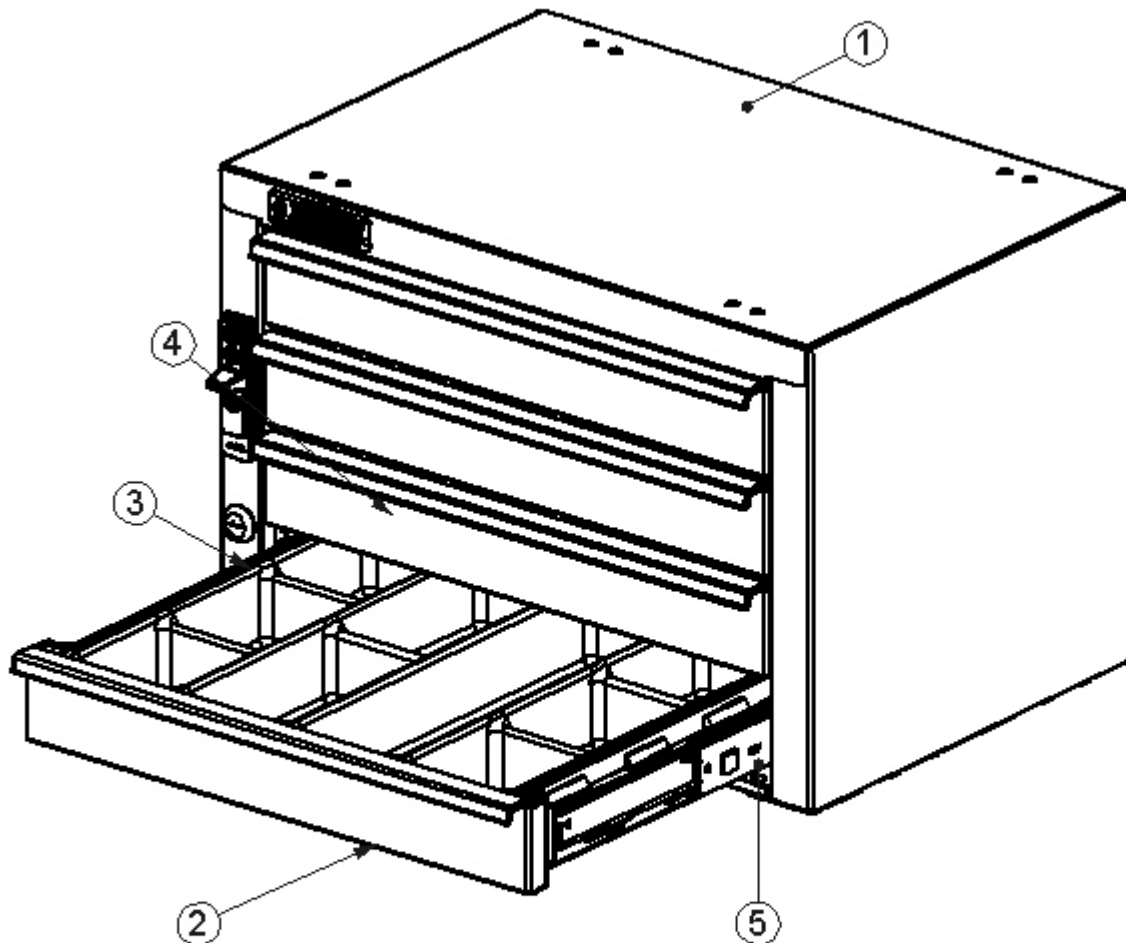
22200-0 PLUSNUT TOOL



Place barrel of the plusnut body in sheet metal thru hole until flange is flush with sheet metal.

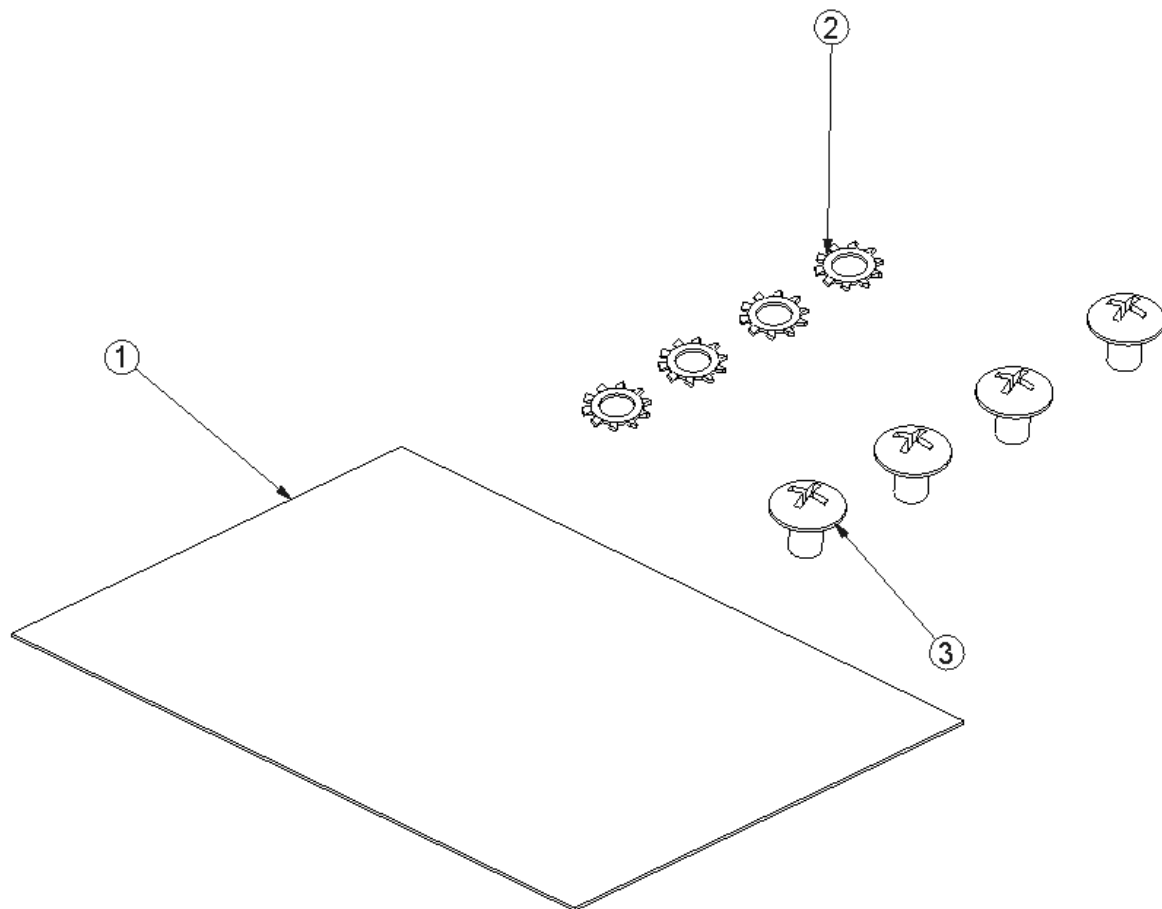
Using a 9/16" combination wrench of plusnut tool body and a second hand wrench, ratchet, or air tool, rotate the hex bolt head CW to draw plus nut flanges up (set the plusnut).



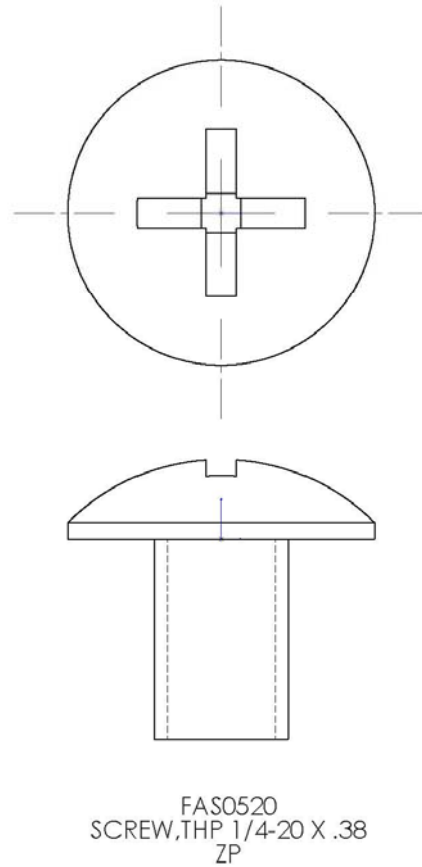
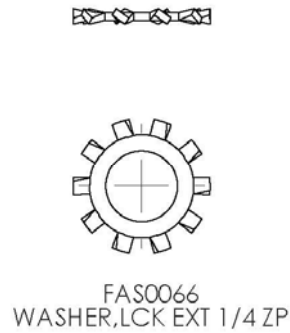


INSERT FOUR (4) 40287-LH AND FOUR (4) 40287-RH SLIDES INTO CABINET BODY. INSERT FOUR(4) 40015 DRAWERS INTO CABINET BODY. INSERT A TOTAL OF FOUR (4) 26105-0 DIVIDER TRAYS INTO UNIT. INSERT ONE (1) DIVIDER TRAY UPSIDE DOWN INTO TOP DRAWER AND RIGHT SIDE UP INTO THE REMAINING THREE (3) DRAWERS. PLACE BAG00001-0 INTO THE SECOND DRAWER TRAY. TAPE THE LOCK KEYS INTO THE FRONT RIGHT HAND TRAY POCKET AND CLOSE THE DRAWERS.

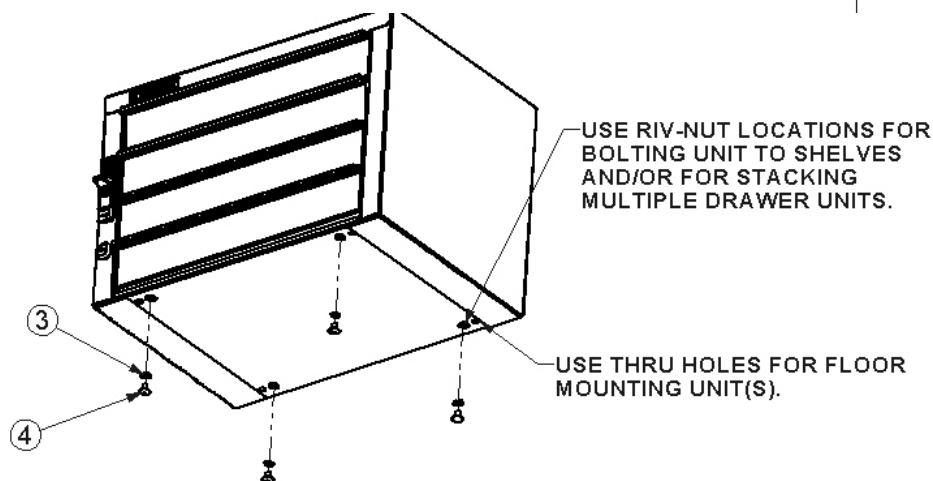
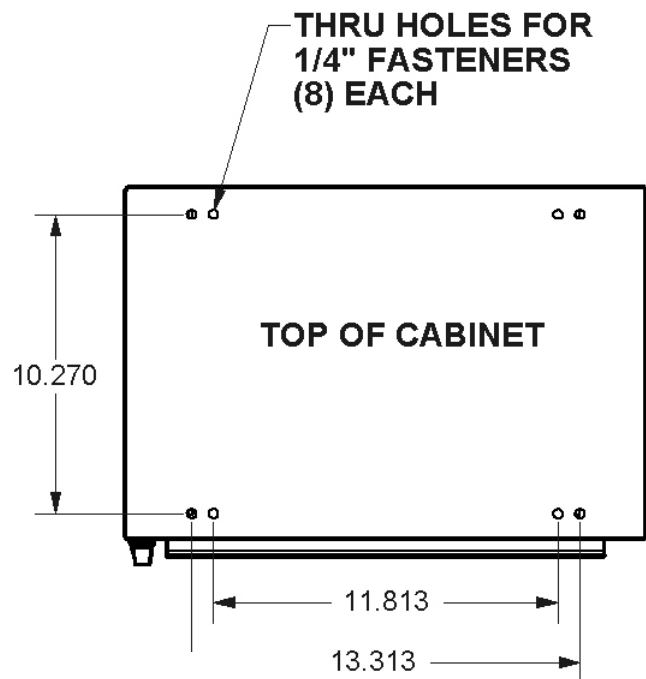
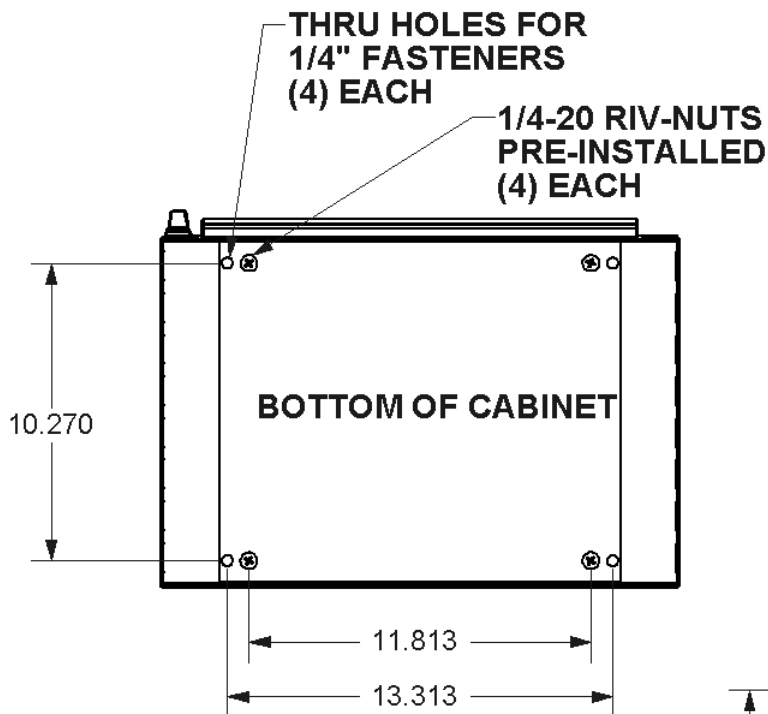
ITEM NO.	PART NUMBER	DESCRIPTION	BAG00001-0/QTY.
1	BAG0505-A	5" x 5" 3MIL AUTOBAG	1
2	FAS 0066	Washer, Lock, Ext. Tooth, 1/4	4
3	FAS0520	Screw, Truss Hd. Ph, 1/4-20x .375" lg	4

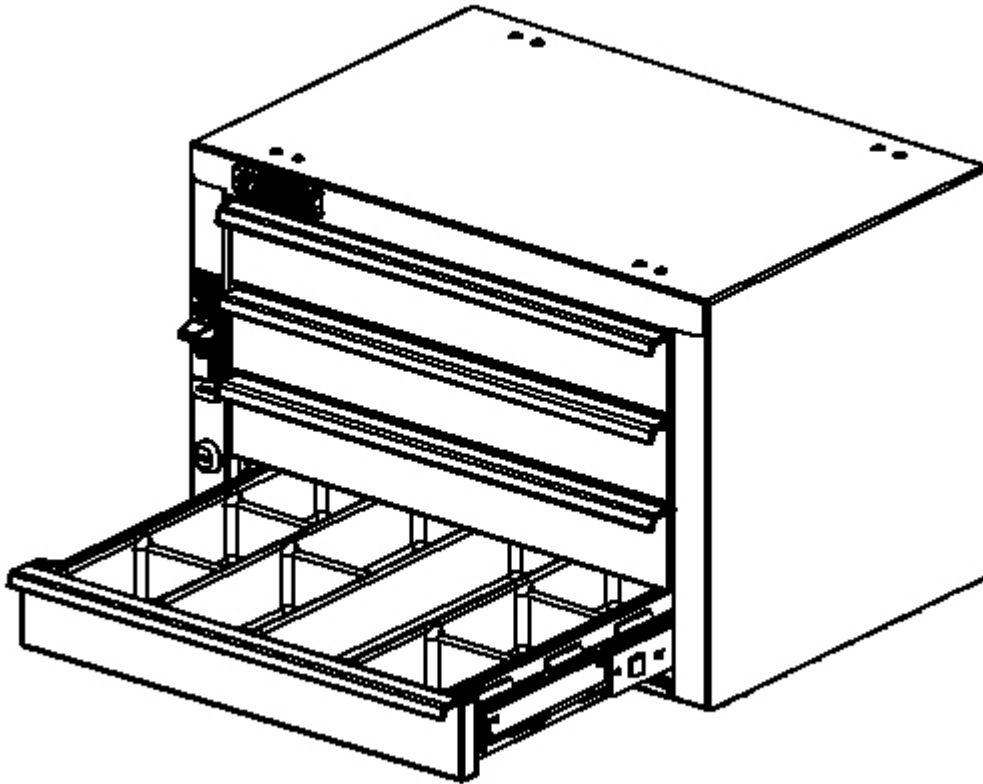


## Individual Fastener Images & Descriptions



## Step 01 Methods of Attachment





**DOUBLE CHECK ALL FASTENERS LOCATIONS TO BE SURE THAT ALL  
FASTENERS ARE TIGHTENED TO SPECIFICATIONS.  
YOUR INSTALLATION IS NOW COMPLETE!  
STOW THIS COPY IN THE VEHICLE FOR FUTURE REFERENCES!**