

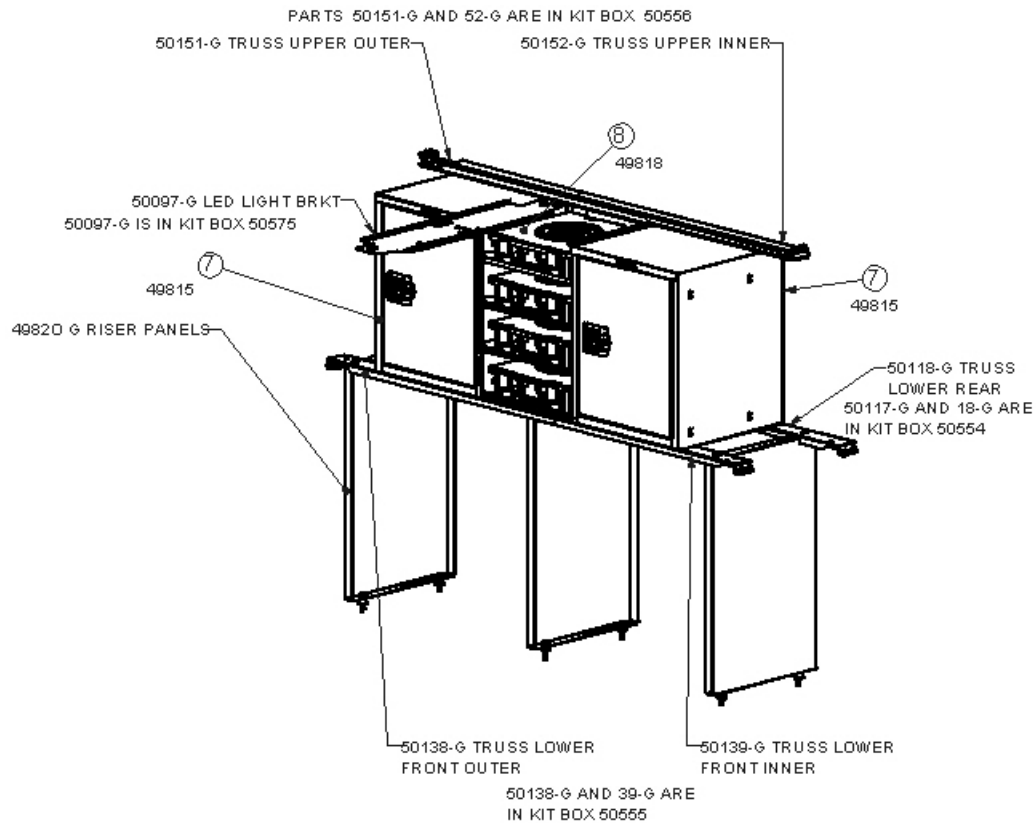
Introduction / Comments:

MD540 Center Storage Module. Designed to fit in a 2016 Ford Transit 148"WB, Low Roof. Access to side door of vehicle, include (2) lockable storage cabinets with shelves. Between these cabs is a (4) Tote Holder. And a LED Light Mounting Bracket Above.

Note:

It is advised that all fasteners used in this assembly and installation should be checked for tightness at the following intervals: @ 2-weeks and again @ 6-weeks of operation. This preventive maintenance step must be completed to ensure your Product gives you long service life.

ITEM NO.	PART NUMBER	DESCRIPTION	QTY.
1	BAG50528	FAS BAG, MD540	1
2	50556	KIT ,50151,52 UPPER REARTRUSS	1
3	50554	KIT, 50117,18 LWR REAR TRUSSES	1
4	50575	KIT FOR 50097 LIGHT BRKT	1
5	50576	KIT,49820 RISER PANELS	1
6	50555	KIT, 50138,39 LWR FRONT TRUSS	1
7	49815	CAB, 18X22X18 , REV DOOR	2
8	49818	FOUR CASE HOLDER	1



**MD540
CENTER STORAGE MODULE**

- PRECAUTIONS -



CAUTION
THE USE OF AIR IMPACT TOOLS CAN OVER-TORQUE FASTENERS AND CAUSE FASTENER FAILURE!



CAUTION
ALL INSTALLATION HOLES SHOULD BE SEALED WITH SILICON OR BUTYL SEALANT TO PREVENT EXHAUST FUMES FROM ENTERING THE VEHICLE!



DANGER
INSPECT FOR FUEL TANK, FUEL LINES, BRAKE LINES, HIGH VOLTAGE BATTERIES AND ELECTRICAL LINES PRIOR TO DRILLING TO AVOID DAMAGING CRITICAL VEHICLE SYSTEMS OR INJURY TO INSTALLER DURING INSTALLATION PROCESS!



CAUTION
TO AVOID DAMAGING THE VEHICLE ALWAYS USE DRILL STOPS WHEN DRILLING ANY INSTALLATION HOLES!
ADRIAN AVAILABLE PART #'S 31121-0 (3/8" X 1/2" DEEP), 31121-0 (1/2" x 1/2" DEEP)



- IMPORTANT WARRANTY REQUIREMENTS -

1. SUBSTITUTING ADRIAN STEEL SPECIFIED FASTENERS FOR ASSEMBLY AND/OR INSTALLATION WILL VOID YOUR PRODUCT WARRANTY.
2. ALL HOLES DRILLED INTO VEHICLE SHOULD HAVE THE RAW METAL EDGES SEALED WITH A SELF-ETCHING PRIMER TO RESIST CORROSION AND POTENTIAL FASTENER POINT FAILURE.
3. ALL FASTENERS USED IN THE INSTALLATION OF THIS PRODUCT SHOULD BE TIGHTENED TO THE TORQUE(S) SPECIFIED IN THESE INSTRUCTIONS.
4. THESE INSTRUCTIONS SHOULD BE KEPT WITH THE VEHICLE.

THE BASIC TOOLS NEEDED FOR MOST INSTALLATIONS



DRILL



DRILL BIT WITH STOP



RATCHET, SOCKETS AND/OR WRENCHES



SCREWDRIVERS



MEASURING TAPE

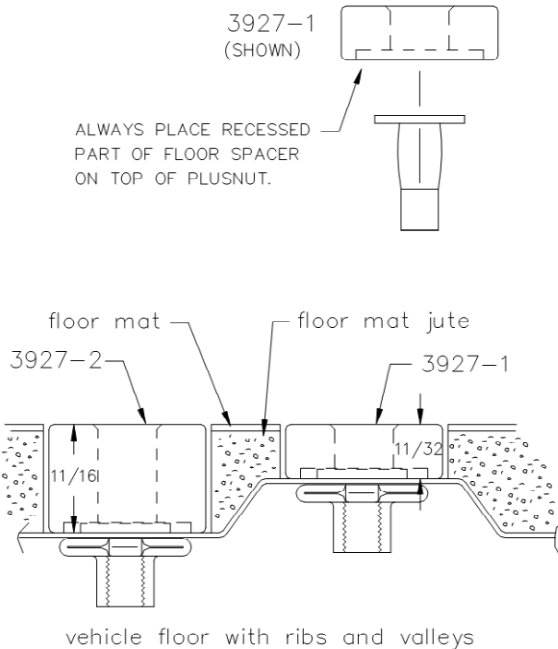
ADDITIONAL TOOLS MAY BE NEEDED FOR THIS INSTALLATION AND THEY WILL BE IDENTIFIED IN THE STEPS THAT FOLLOW.

If your vehicle contains carpet or a rubber floor mat you will need to prepare the mounting location. Position the product to be installed into the vehicle and once you are satisfied with the mounting locations, mark the mounting locations. Using a 1-3/16" diameter carpet cutter (P/N: 31183-0). Select the appropriate floor spacers as shown in the illustration. Set those aside for use later into the installation process.

Using the correct drill bit size for the selected plusnut, drill the mounting holes in the vehicle sheet metal to prepare for installing the plusnuts.

If you are thru-bolting at any of the locations simply drill a hole that is 1/16" larger than the bolt size(s) for those locations.

Once you have drilled the holes into the vehicle, the raw metal edges should be sealed using a self-etching primer to resist corrosion and potential fastener point failure.



A PLUSNUT (RIVNUT) SETTING TOOL IS REQUIRED FOR PLUSNUT (RIVNUT) INSTALLATION . PLUS NUT SETTING TOOL CAN BE ORDERED THROUGH ADRIAN STEEL, OR USE AN AIR POWERED PLUSNUT SETTING GUN.

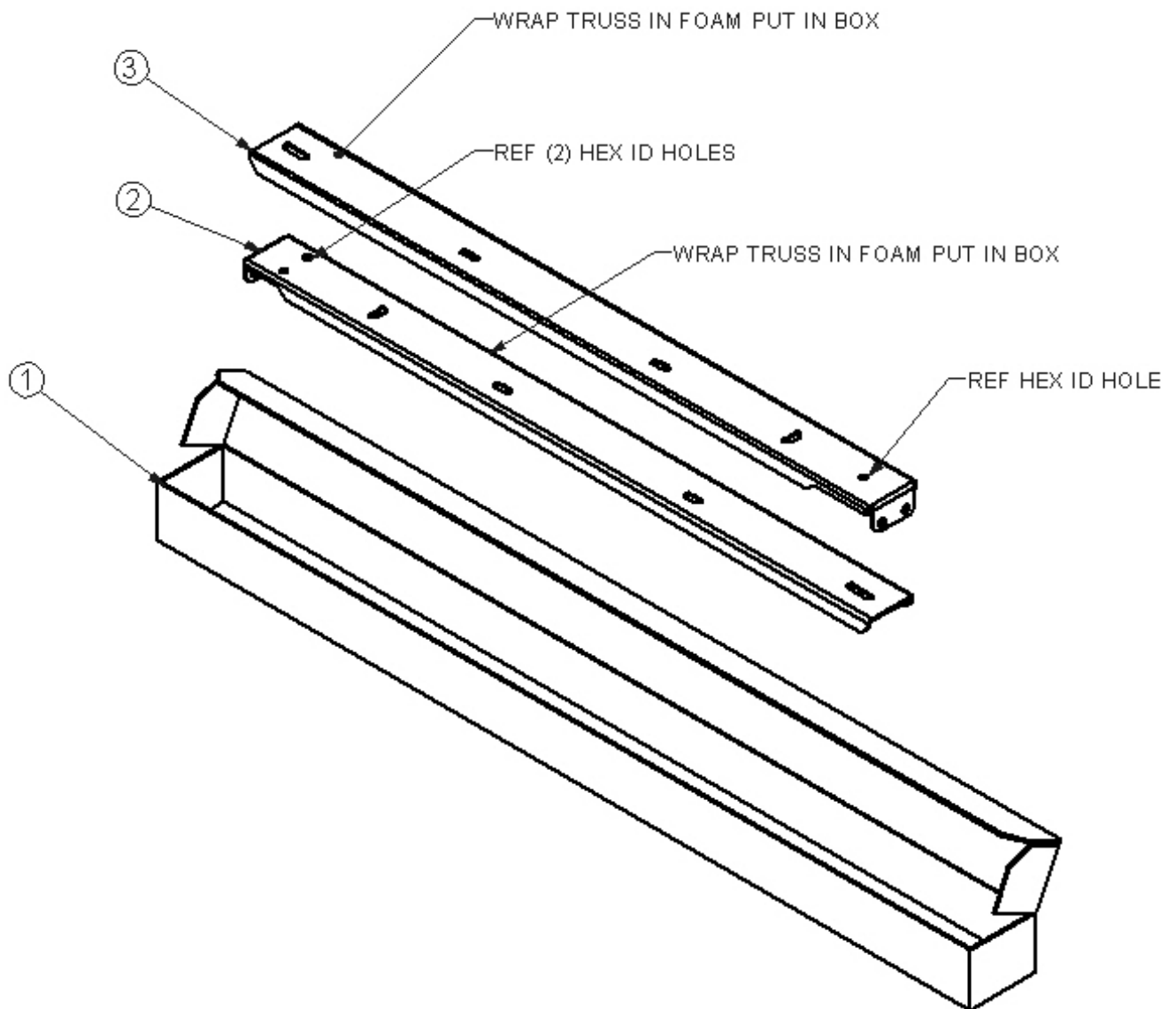
1/4-20UNC Plusnut (FAS0052) Use 3/8" dia. drill w/stop
 FAS0080 SCREW, HXHD, 1/4-20UNCx2.00", G8
 FAS0067 WASHER, FLAT, 1/4"ID
 22200-0 PLUSNUT TOOL

5/16-18UNC Plusnut (FAS0091) Use 1/2" dia. drill w/stop
 FAS0095 SCREW, HXHD, 5/16-18UNCx2.00", G8
 FAS0086 WASHER, FLAT, 5/16"ID
 22200-0 PLUSNUT TOOL

Place barrel of the plusnut body in sheet metal thru hole until flange is flush with sheet metal.
 Using a 9/16" combination wrench of plusnut tool body and a second hand wrench, ratchet, or air tool, rotate the hex bolt head CW to draw plus nut flanges up (set the plusnut).

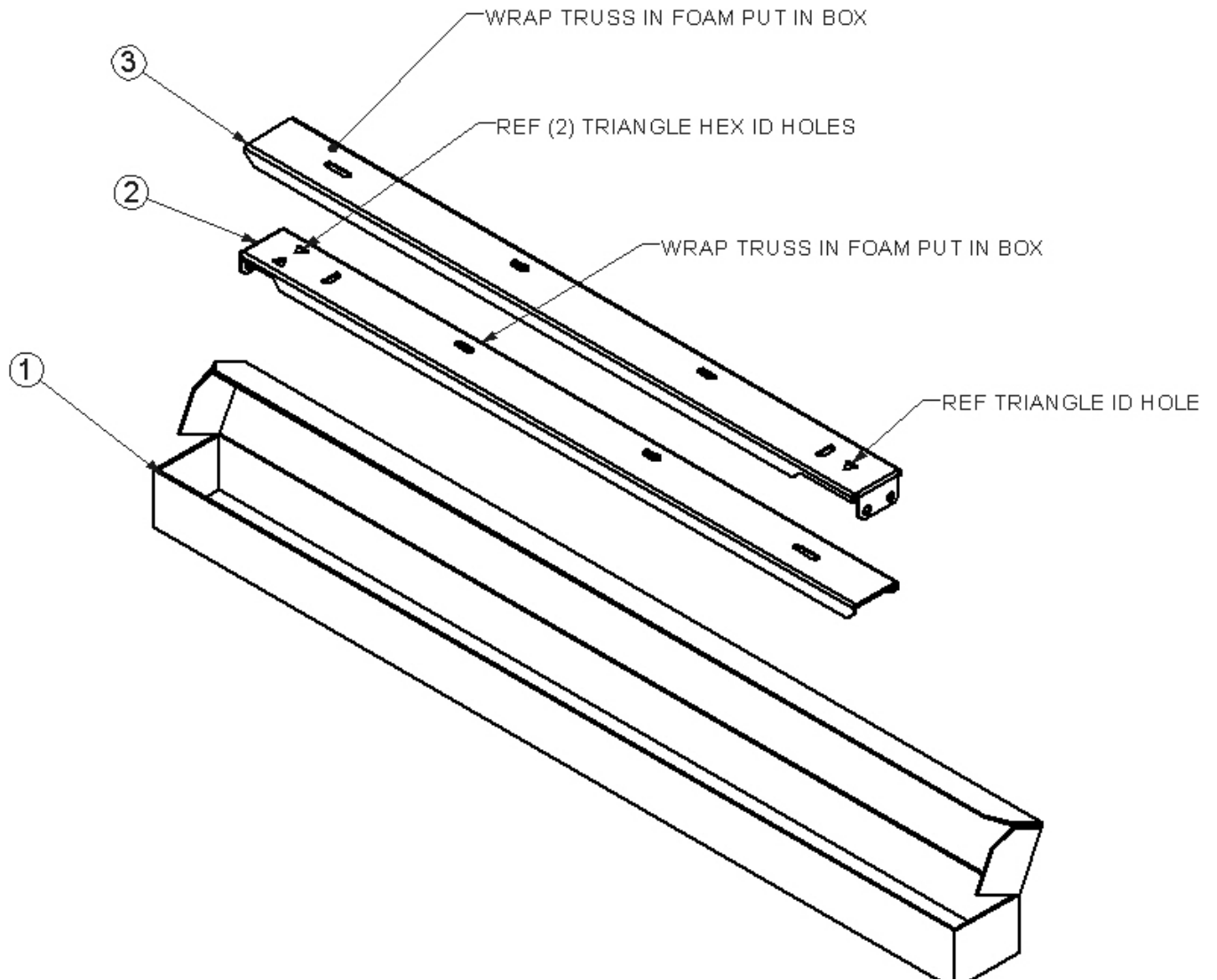
**Kit, 50117,18 LWR REAR TRUSS
50554**

ITEM NO.	PART NUMBER	DESCRIPTION	QTY.
1	CRTRAILLHD	CARTON AD RAIL KIT LHD	1
2	50118-G	TRUSS LOWER REAR, INNER, SS	1
3	50117-G	TRUSS LOWER REAR, OUTER, CS	1



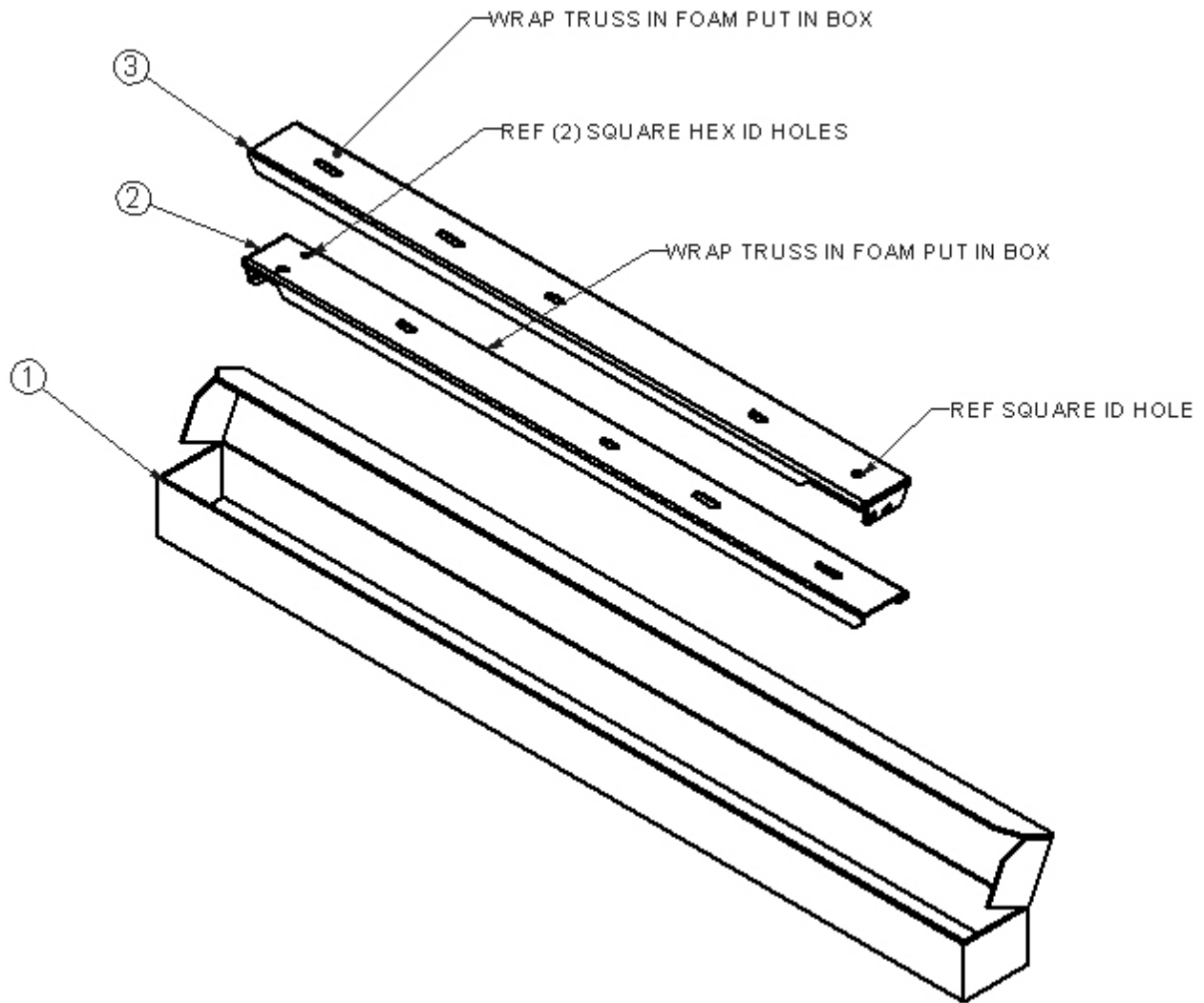
Kit, 50138,39 LWR FRONT TRUSS
50555

ITEM NO.	PART NUMBER	DESCRIPTION	QTY.
1	CRTRAILLHD	CARTON AD RAIL KIT LHD	1
2	50139-G	TRUSS LOWER FRONT, INNER, SS	1
3	50138-G	TRUSS LOWER FRONT, OUTER, CS	1



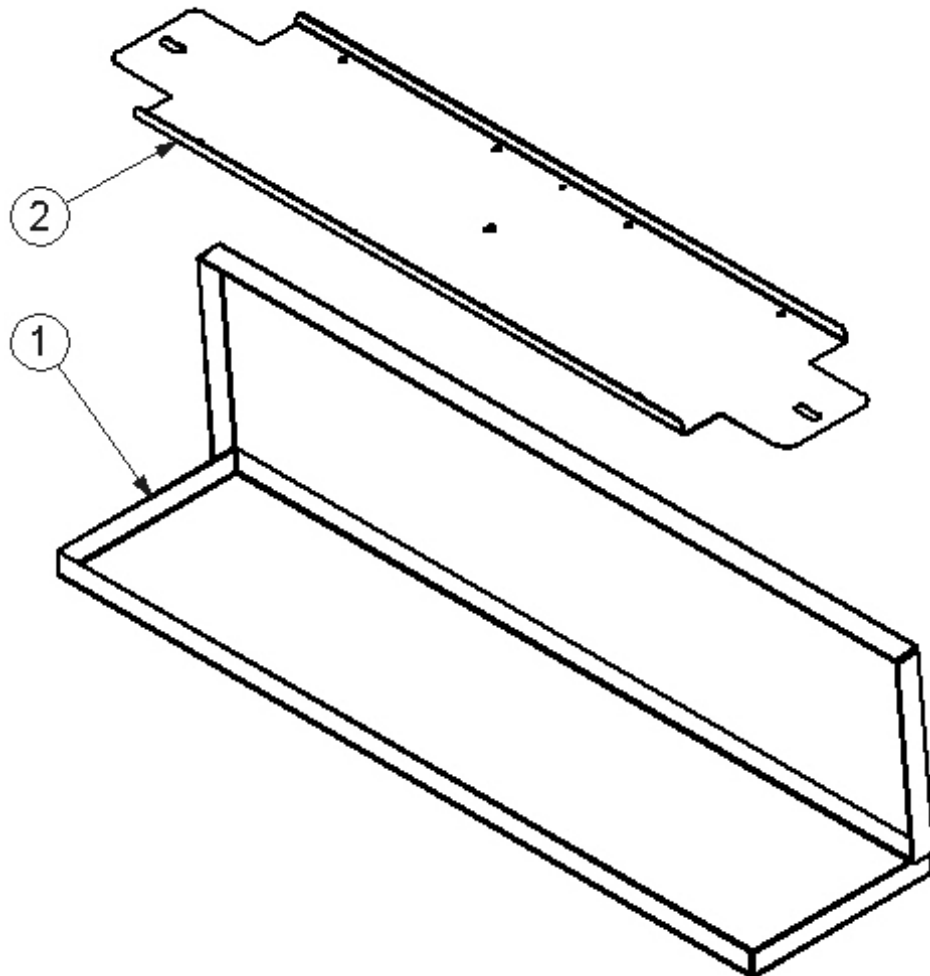
Kit, 50151-G,52-G UPPER REAR TRUSS
50556

ITEM NO.	PART NUMBER	DESCRIPTION	QTY.
1	CRTRAILLHD	CARTON AD RAIL KIT LHD	1
2	50152-G	TRUSS UPPER, INNER, SS	1
3	50151-G	TRUSS UPPER, OUTER, CS	1



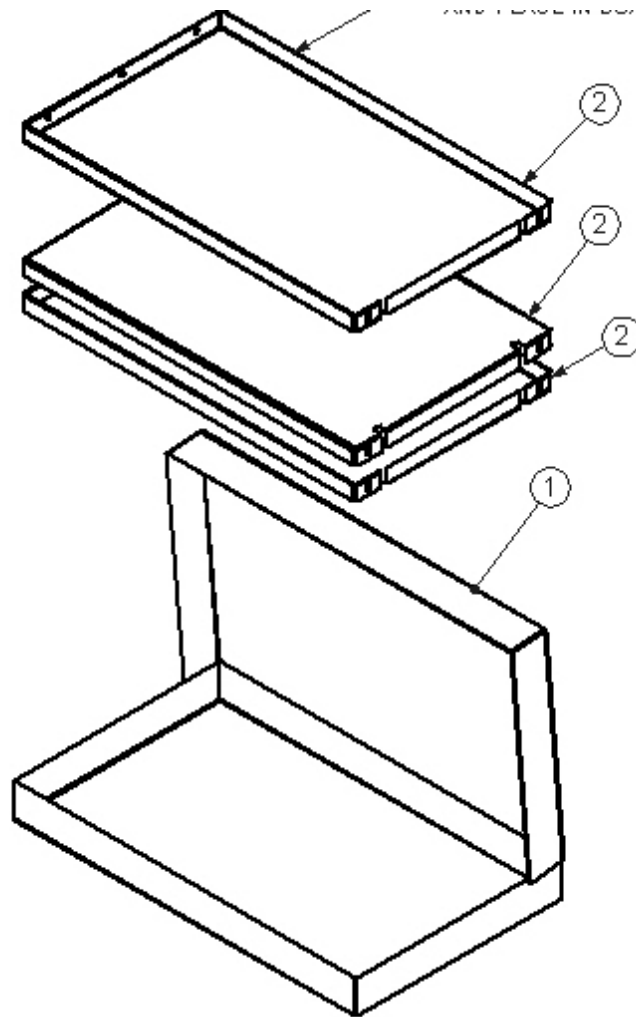
Kit, FOR 50097-G LIGHT BRACKET
50575

ITEM NO.	PART NUMBER	DESCRIPTION	QTY.
1	CRT50097	CARTON FOR 50097-G LED LGHT BRKKT	1
2	50097-G	MTG BRKT, LED LIGHT,	1



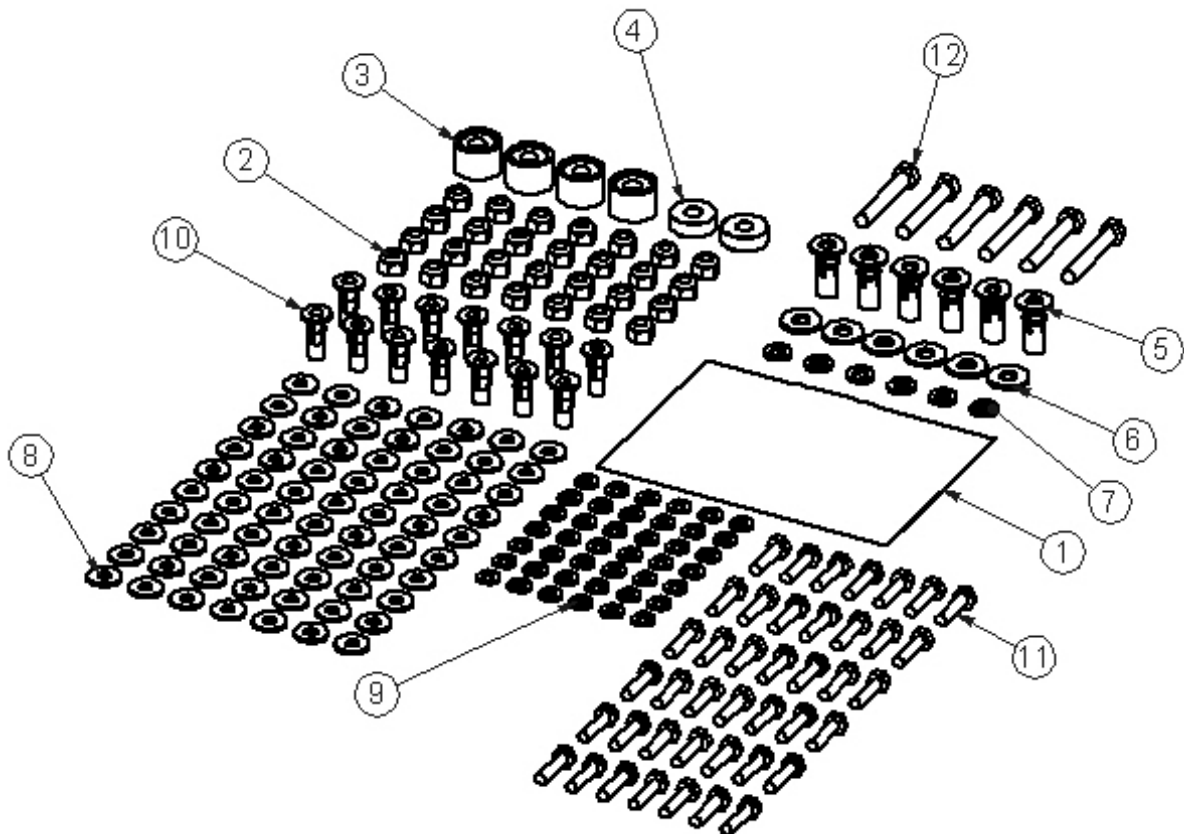
Kit, 49820-G RISER PANELS
50576

ITEM NO.	PART NUMBER	DESCRIPTION	QTY.
1	CRT49820	CARTON FOR 49820-G RISER PANELS	1
2	49820-G	RISER PANEL, MD540	3



**FAS BAG, MD540
BAG50528**

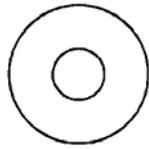
ITEM NO.	PART NUMBER	DESCRIPTION	BAG50528/QTY.
1	BAG0507-A	5" x 7" 3MIL AUTOBAG	1
2	FAS0058	Nut, Nylon Insert Lock, 1/4-20	28
3	03927-2	Tall Floor Spacer	4
4	03927-1	Floor Spacer Short	2
5	FAS0091	Plusnut, 5/16	6
6	FAS0086	WASHER,FLAT USS 5/16 ZP	6
7	FAS0098	Washer, Lock, Split, 5/16, Zinc Plate	6
8	FAS0067	Washer, Flat, 1/4	70
9	FAS0060	Washer, Lock, Split, 1/4	42
10	FAS0052	Plusnut, 1/4	14
11	FAS0078	Screw, Hex Hd, 1/4-20x1.00 Zn Plate, Grade 8	42
12	FAS0095	Screw, Hex Hd, 5/16-18x2.00, Grade 8	6



Individual Fastener Images & Descriptions



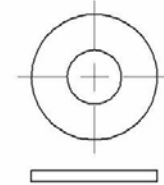
03927-2
Spacer, Floor,
11/16" ht



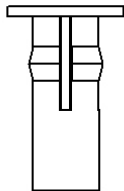
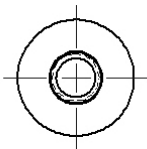
03927-1
SPACER, C/F, 1006,
3/8"ID x 1"OD
(0.343" thk)



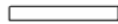
FAS0098
WASHER, LOCK, SPLIT
5/16"ID x 9/16"OD



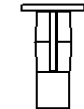
FAS0086
WASHER, FLAT
5/16, ZN



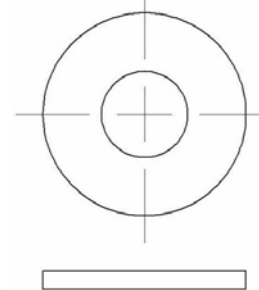
FAS0091
5/16 PLUS NUT



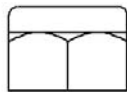
FAS0060
WASHER, LOCK, SPLIT
1/4



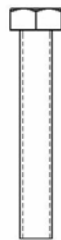
FAS0052
PLUS NUT
1/4"



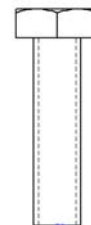
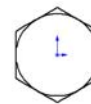
FAS0067
WASHER, FLAT, 1/4



FAS0058
1/4-20 NUT
NYLON INSERT



FAS0095
SCREW HEX HD
5/16-18 X 2.0 ZP



FAS0078
SCREW, HH 1/4-20 X 1.00
Zn Plate Grade 8

STEP 1

ASSEMBLE 49815 CAB, 18X22X18 REV DOOR, USE SHEET 49816 REF SHOWN BELOW. IT IS IN BOX WITH PARTS. PUT (2) UNITS TOGETHER

ITEM NO.	PART NUMBER	DESCRIPTION	QTY.
1	49928-G	REV DOOR CAB	1
2	07088-0	BOTTOM, #1 CABINET	1
3	21000-0	Folding T-Handle	1
4	1A	SHELF, #1 CABINET	1
5	LOG O-SM	875"X3.0"ADRIAN STEEL LO	1

DETAIL G SCALE 1 : 5
FAS0021 SCREW, RHP, #10-24 UNC X 1.00 QTY = 4

DETAIL H SCALE 1 : 4
FAS0029 NUT, NYLON, LOCK, #10-24 UNC QTY = 4
LATCH PAWL, ADJUST POSITION AS REQ'D. SECURE W/SET SCREW

NOTES:

- 07088-0 "CABINET BOTTOM" SHIPPED LOOSE WITH 1A "SHELF, FOR #1 CAB."
- BACK PANEL OF CABINET NOT SHOWN IN VIEW SO THAT INSTALLATION HDW ARE VISIBLE.

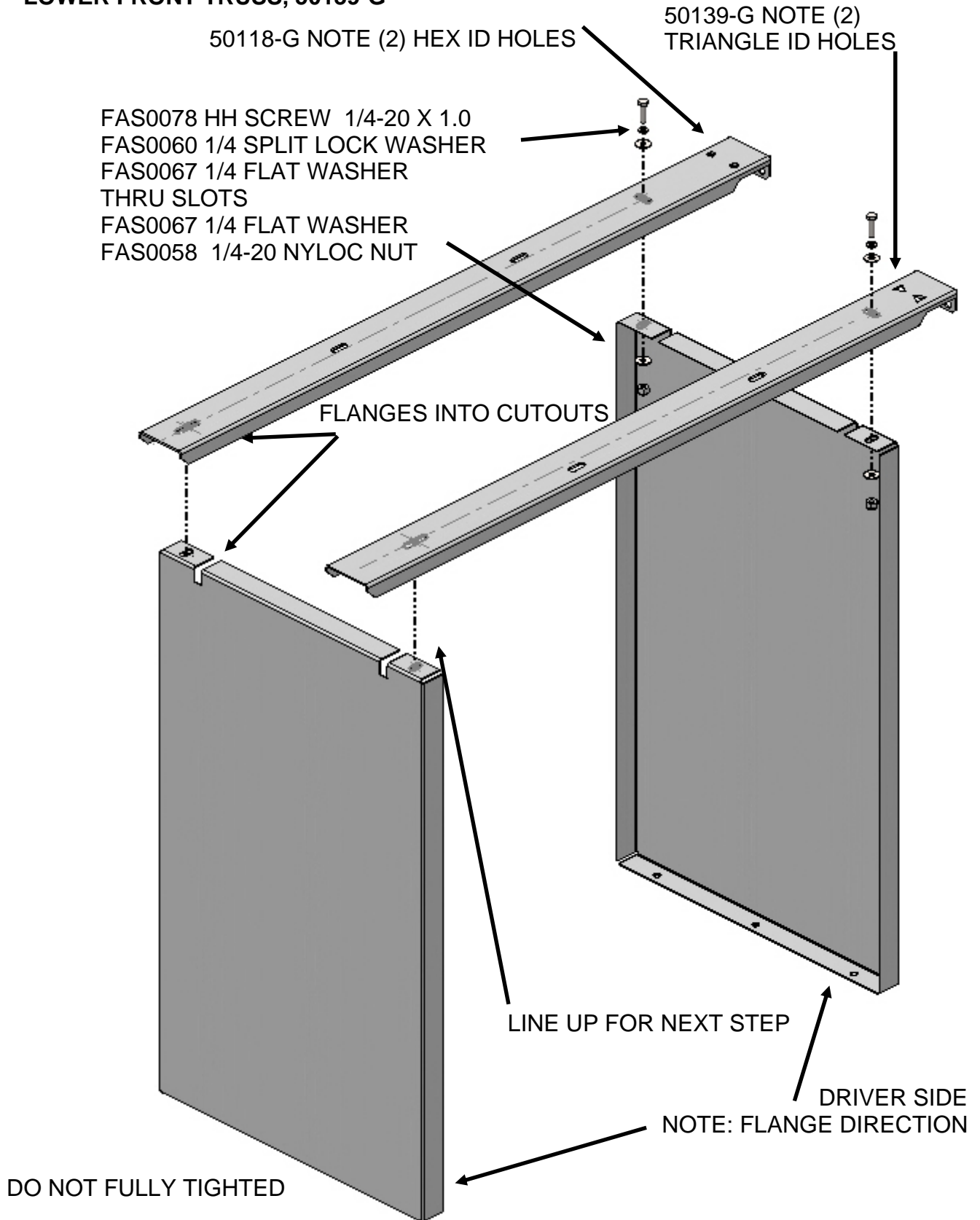
PRINTED DOCUMENT IS UNCONTROLLED Sheet 1 of 1

THIS PRODUCT IS SUBJECT TO CHANGE. ADRIAN STEEL COMPANY RESERVES THE RIGHT TO CHANGE THE PRODUCT OF IT'S DESIGN WITHOUT PRIOR NOTICE. THIS DRAWING IS THE PROPERTY OF ADRIAN STEEL COMPANY AND IS NOT TO BE USED IN ANY MANNER DETRIMENTAL TO THE INTERESTS OF ADRIAN STEEL COMPANY.	Shipping Wt. (Lbs.): 31.57	906 James St. Adrian, MI 49221 517.265.6194
	Coating/Finish: Gray Pwdct	
Part Description: CAB, 18X22X18, REV DOOR	Part Number: 49816	REVISION LEVEL: A

for reference only!

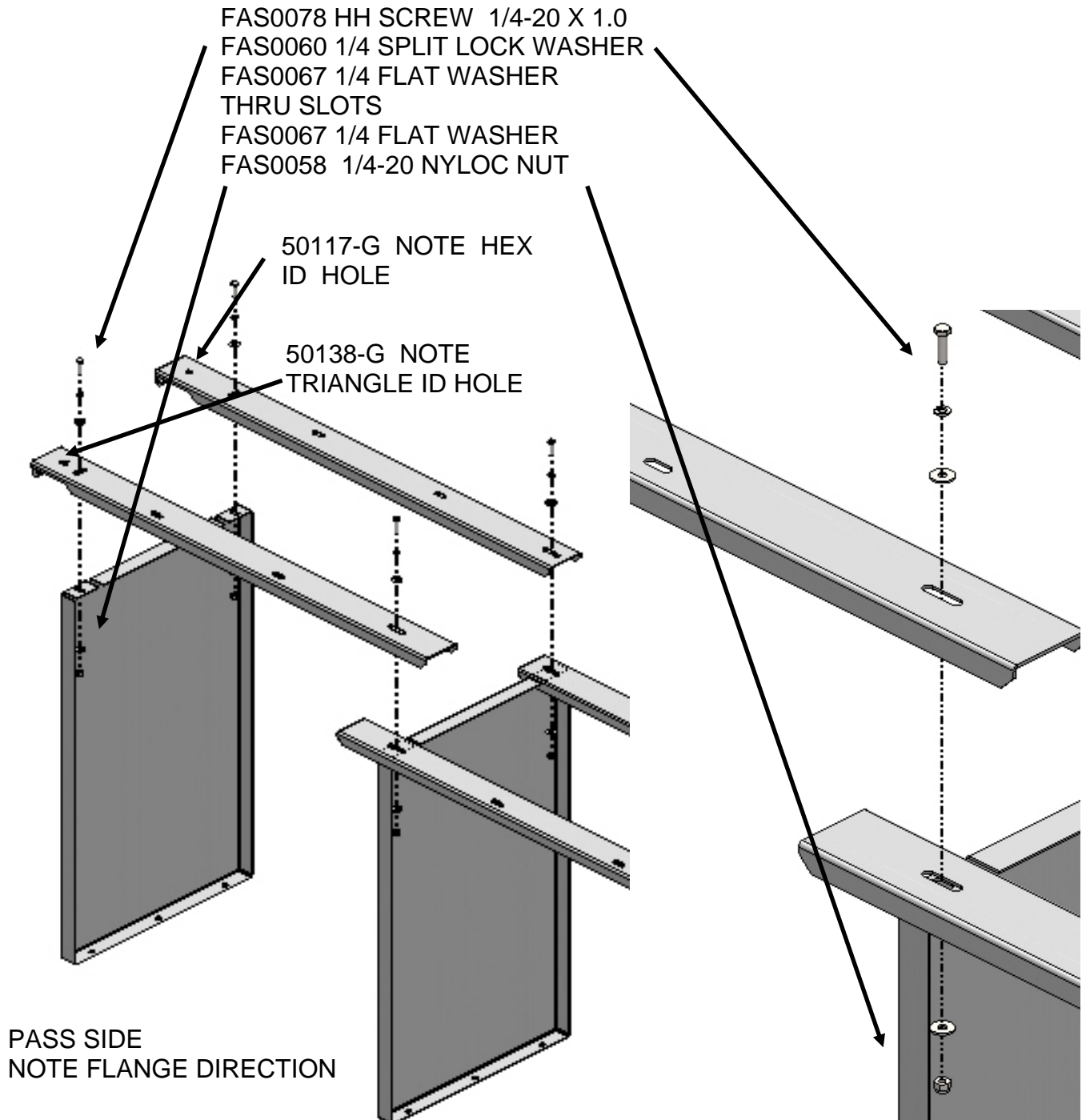
STEP 2

ASSEMBLE 49820-G RISER PANELS TO LOWER REAR TRUSS 50118-G AND TO LOWER FRONT TRUSS, 50139-G



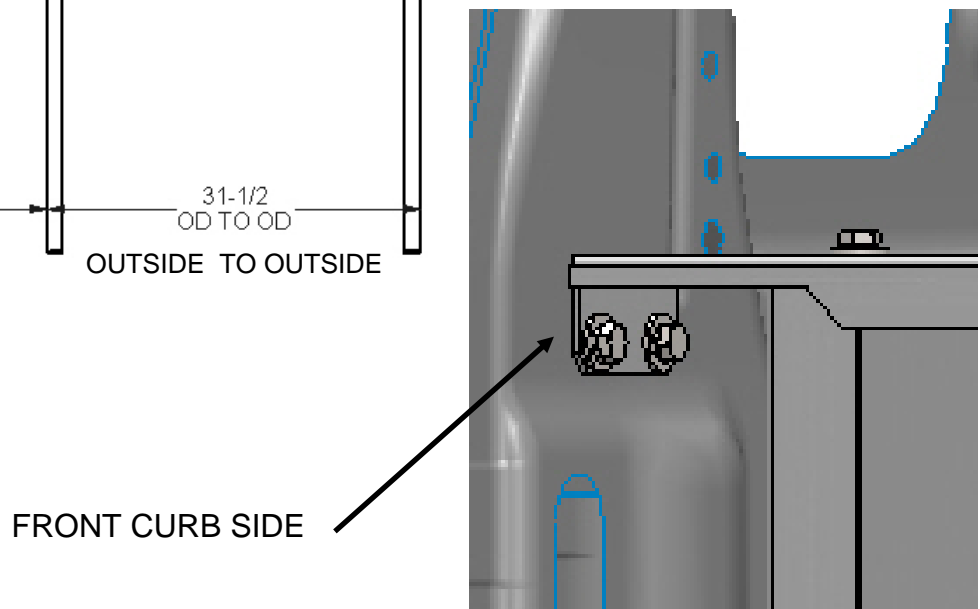
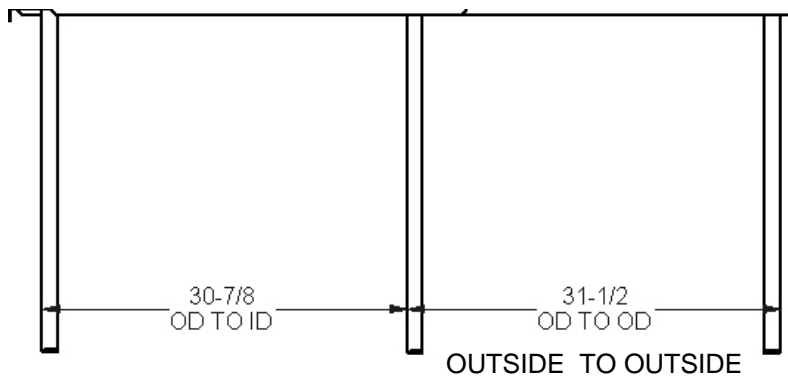
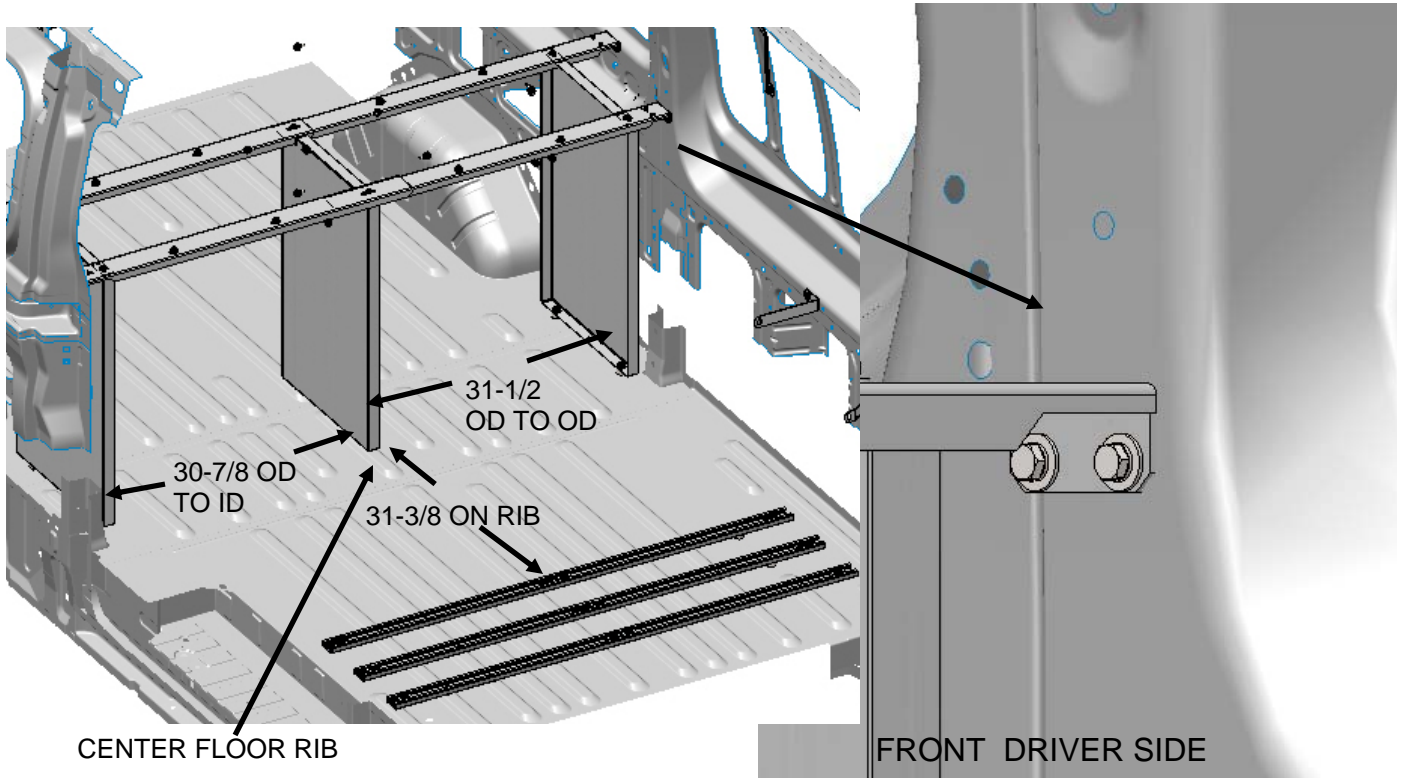
STEP 3

ASSEMBLE 49820-G RISER PANELS TO LOWER REAR TRUSS 50117-G AND TO LOWER FRONT TRUSS, 50138-G ON PASS SIDE



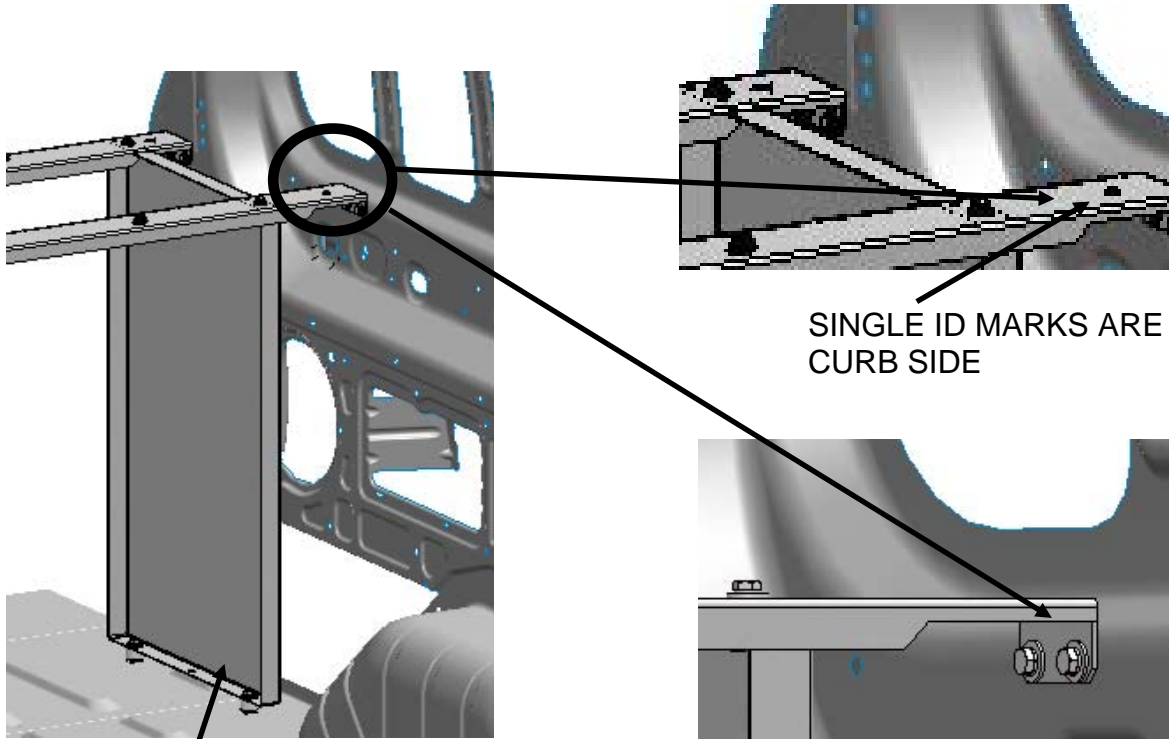
STEP 4

SLIDE UNIT INTO VAN AS IS. PLACE CENTER RISER ON RIB IN CENTER FLOOR AS SHOWN. PLACE IT 31 3/8 FROM THE FRONT FLOOR RAIL TO THE END OF RISER PANEL. ADJUST RISERS AS SHOWN, CS 30.875 OD TO ID. SS 31.500 OD TO OD. ADJUST TRUSSES TO WALL S AND MARK FOR 1/4 PLUSNUTS (4) PLACES EACH WALL AND MARK FLOOR (6) PLACES FOR 5/16 PLUSNUTS. MOVE UNIT BACK AND DRILL AND SET PLUS NUTS REF PAGE (3)

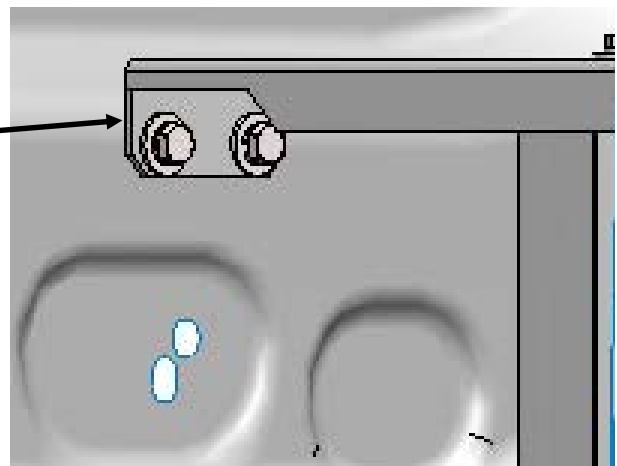
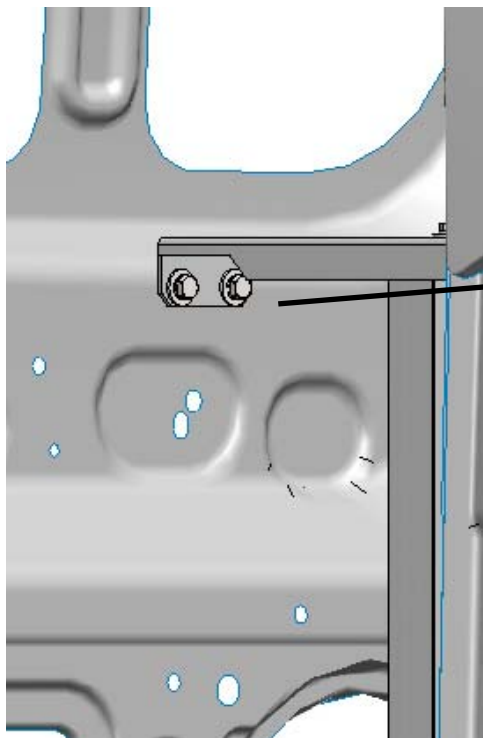
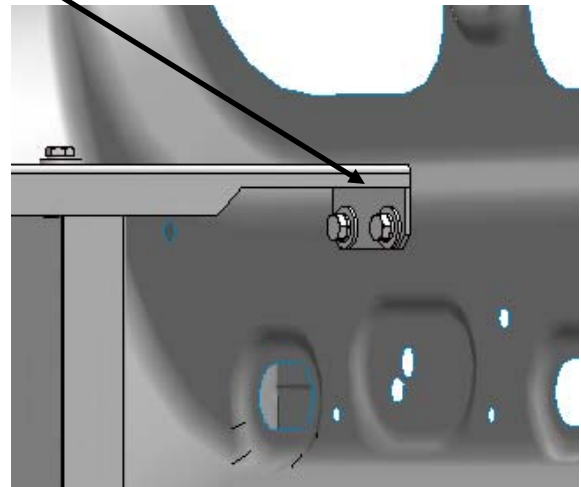


STEP 4 CONTINUED

REF SINGLE ID MARKS ARE ON CURB SIDE, DOUBLE ID MARKS ARE ON THE DRIVER SIDE, CONTINUE TO MARK THE HOLES AND DRILL FOR THE PLUSNUTS, 1/4 FOR ALL TRUSSES AND 5/16 FOR FLOOR RISER PANELS. REF PAGE 3.

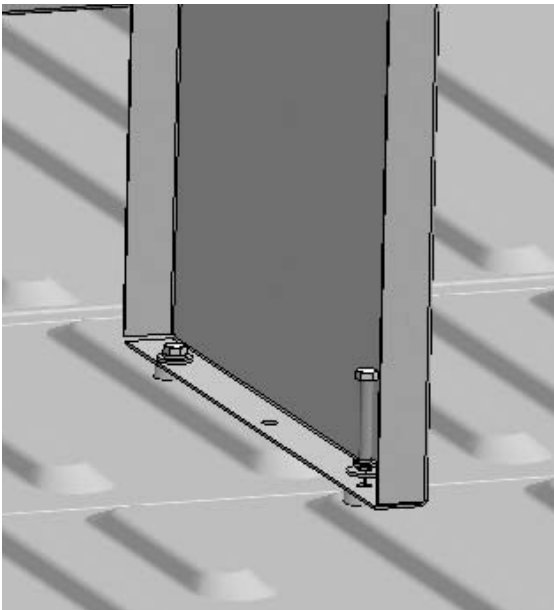


MARK FLOOR FOR 5/16 PLUSNUTS
2 PER END PANEL REF PAGE 3

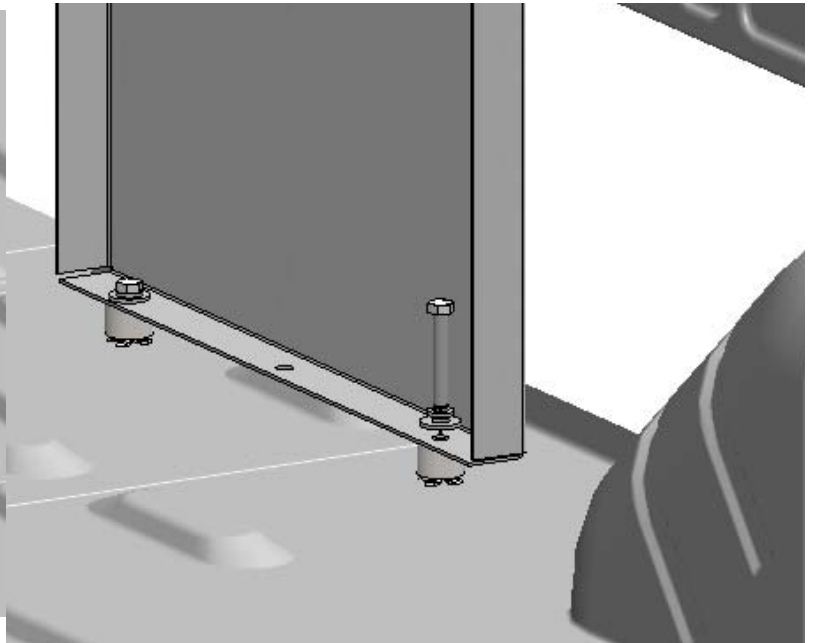


STEP 5

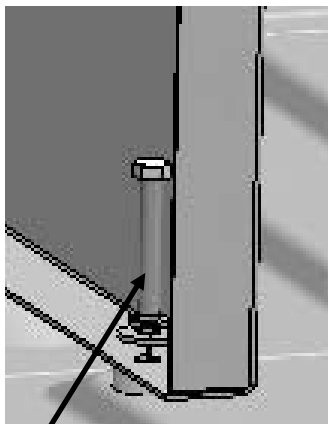
REPLACE UNIT ADD FASTENERS TO FLOOR RISERS. ON END RISERS USE .03927-2 TALL SPACER ON FLOOR UNDER RISER. UNDER CENTER RISER ON FLOOR RIB USE 03927-1 SHORT SPACERS, FASTEN WITH FAS0095, 5/16-18 X 2.0 HH SCREW, FAS0098, 5/16 LOCK WASHER AND FAS0086 5/16 FLAT WASHER (6) PLACES TORQUE 10-12 FT LBS



CENTER RISER

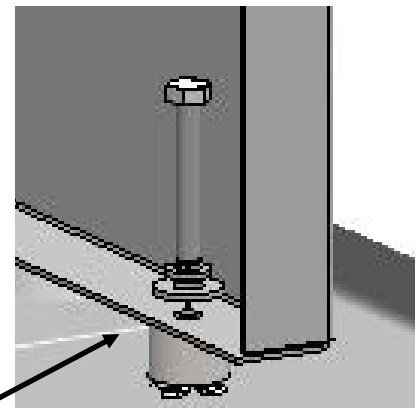


RISER PASS SIDE SHOWN
REPEAT ON DRIVER SIDE



FAS0095 HH SCREW 5/16-18 X 2.0
FAS0098 5/16 SPLIT LOCK WASHER
FAS0086 5/16 FLAT WASHER
03927-1 SHORT SPACER USE ON RIBS

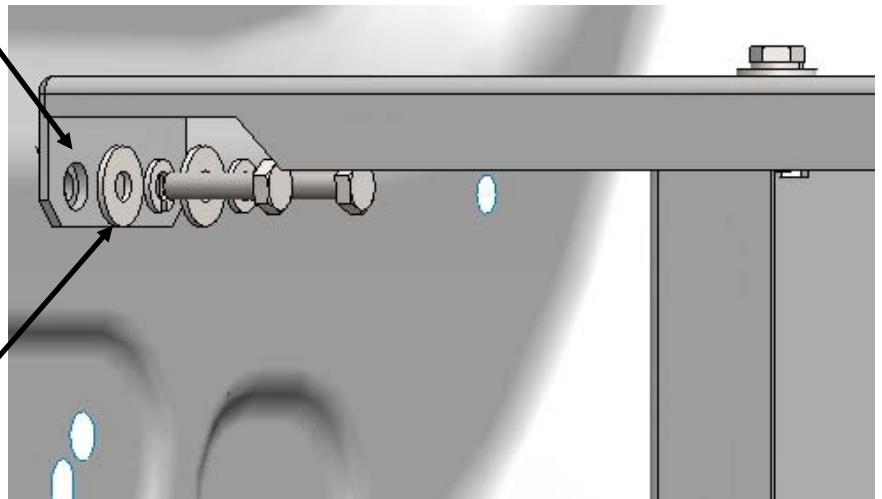
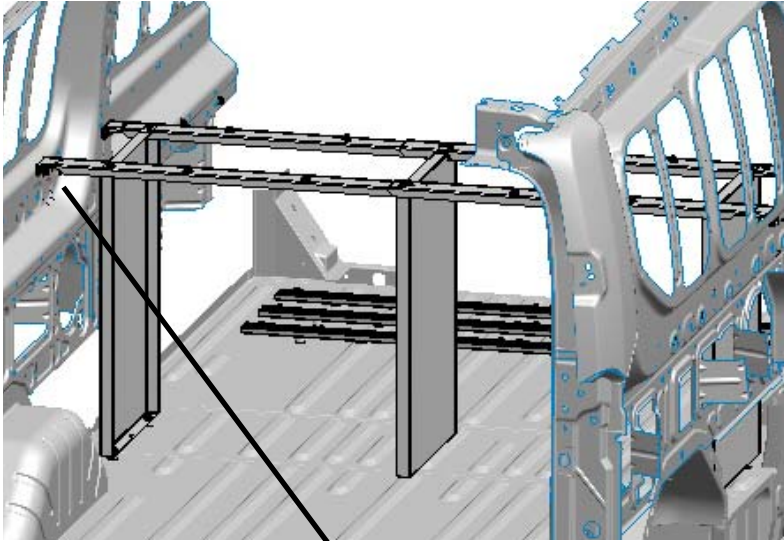
DO NOT FULLY TIGHTEN



FAS0095 HH SCREW 5/16-18 X 2.0
FAS0098 5/16 SPLIT LOCK WASHER
FAS0086 5/16 FLAT WASHER
03927-2 TALL SPACER USE ON FLOOR WITHOUT RIBS

STEP 5 CONTINUED

ATTACH TRUSSES TO WALL USING FAS0078 1/4-20 X 1.0 HH SCREW, FAS0060 1/4 LOCK WASHER, AND FAS0067 1/4 FLAT WASHER. TORQUE 8-10 FT LBS

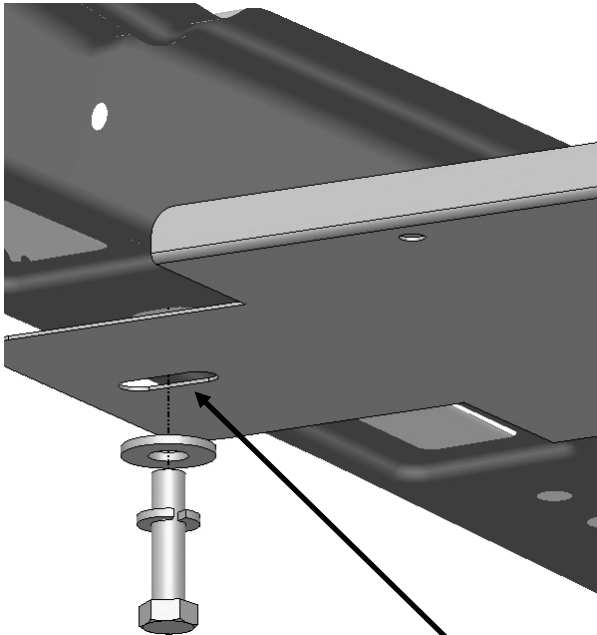


FAS0078 HH SCREW 1/4-20 X 1.0
FAS0060 1/4 SPLIT LOCK WASHER
FAS0067 1/4 FLAT WASHER
(2) PLACES PER TRUSS
REAR DRIVER SIDE SHOWN
SOME PARTS ARE REMOVED FOR CLARITY

DO NOT FULLY TIGHTEN

STEP 6

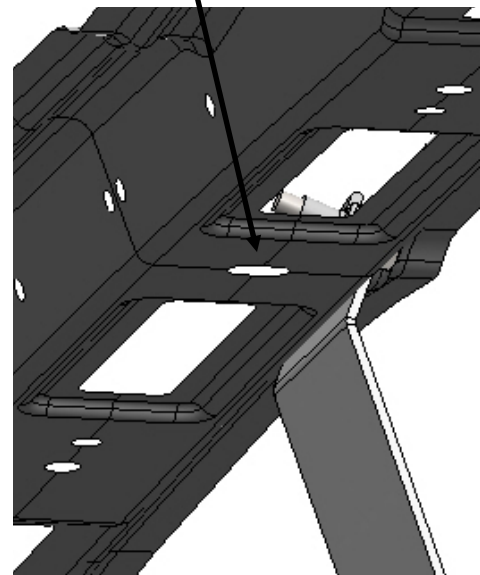
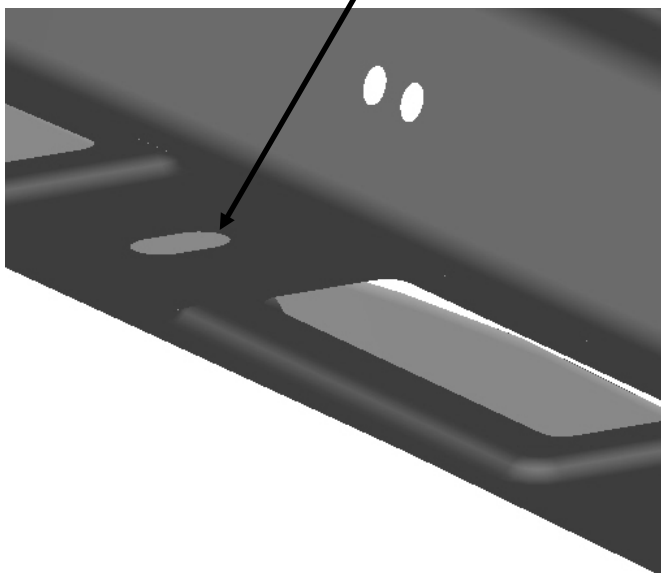
INSTALL 50097-G MTG BRKT, LED LIGHT USING (2) 1/4 PLUNUTS, (2) FAS0078 1/4-20 X 1.0 HH SCREWS, (2) FAS0060 1/4 LOCK WASHERS, AND (2) FAS0067 1/4 FLAT WASHERS, INTO ROOF BOWS AS SHOWN. TORQUE TO 8-10 FT LBS



REAR ROOF BOW USE SLOT

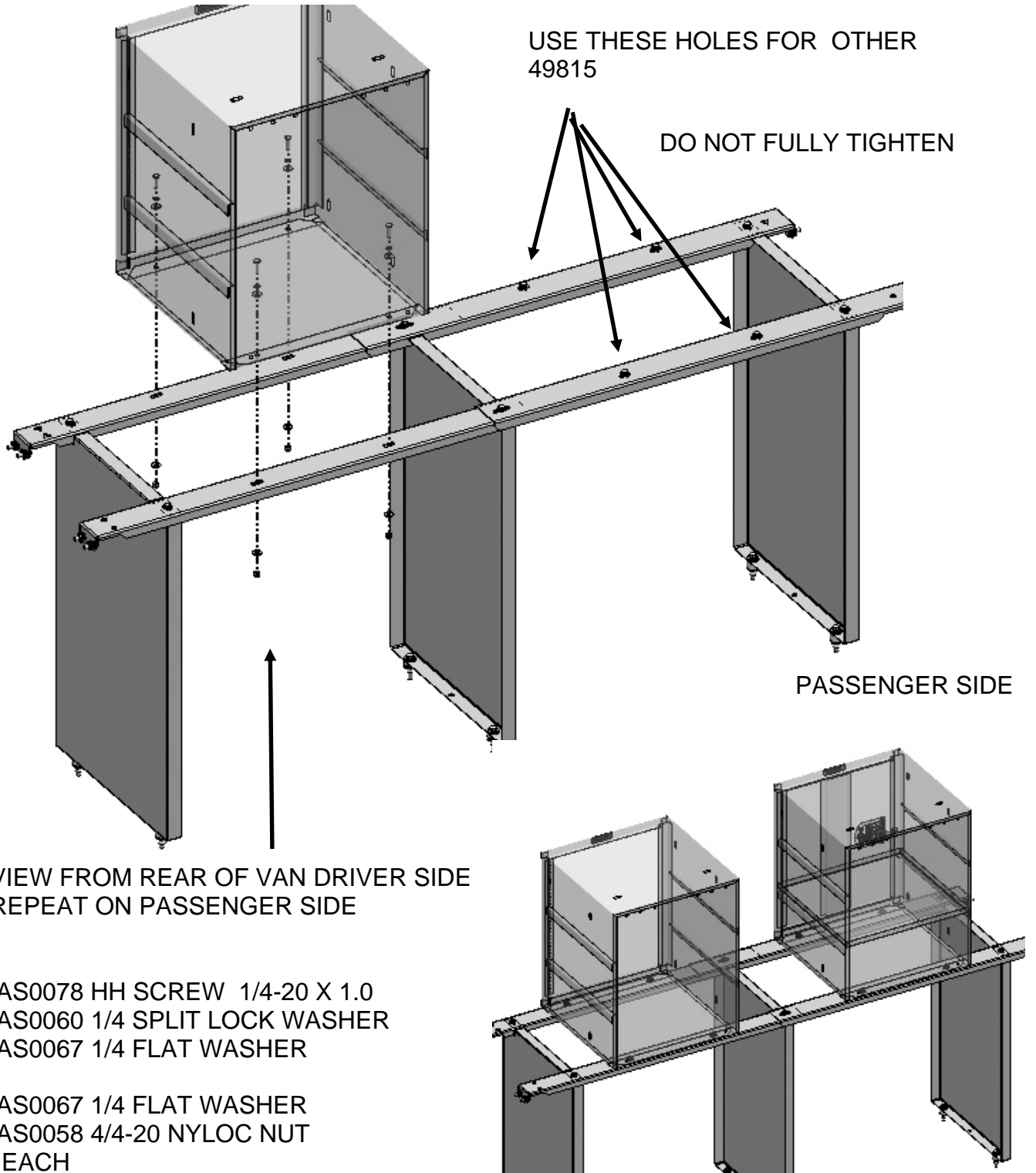


FRONT ROOF BOW USE SLOT



STEP 7

MOUNT 49815 CAB, 18X22X18 REV DOOR ON TOP OF TRUSSES DRIVER SIDE. SHOWN WITHOUT VAN AND CABINET DOOR FOR EASIER VISUAL INSTRUCTIONS. FASTEN FROM (4) HOLES INSIDE CAB THRU (4) SLOTS IN TRUSSES. USE FAS0078 HH SCREW 1/4-20 X 1.0, FAS0060 1/4 LOCK WASHER, FAS0067 1/4 FLAT WASHER. UNDER TRUSS USE FAS0067 1/4 FLAT WASHER, AND FAS0058 1/4-20 NYLOCK NUT (4) PLACES



VIEW FROM REAR OF VAN DRIVER SIDE
REPEAT ON PASSENGER SIDE

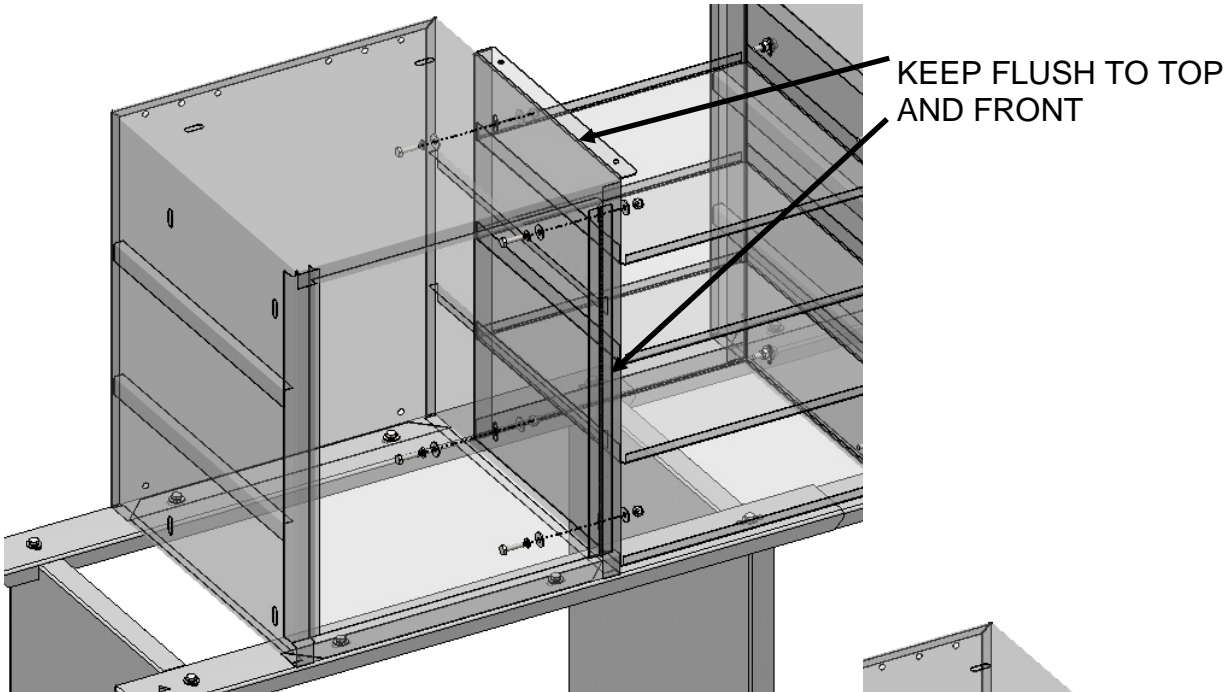
FAS0078 HH SCREW 1/4-20 X 1.0
FAS0060 1/4 SPLIT LOCK WASHER
FAS0067 1/4 FLAT WASHER

FAS0067 1/4 FLAT WASHER
FAS0058 4/4-20 NYLOC NUT
4 EACH

STEP 8

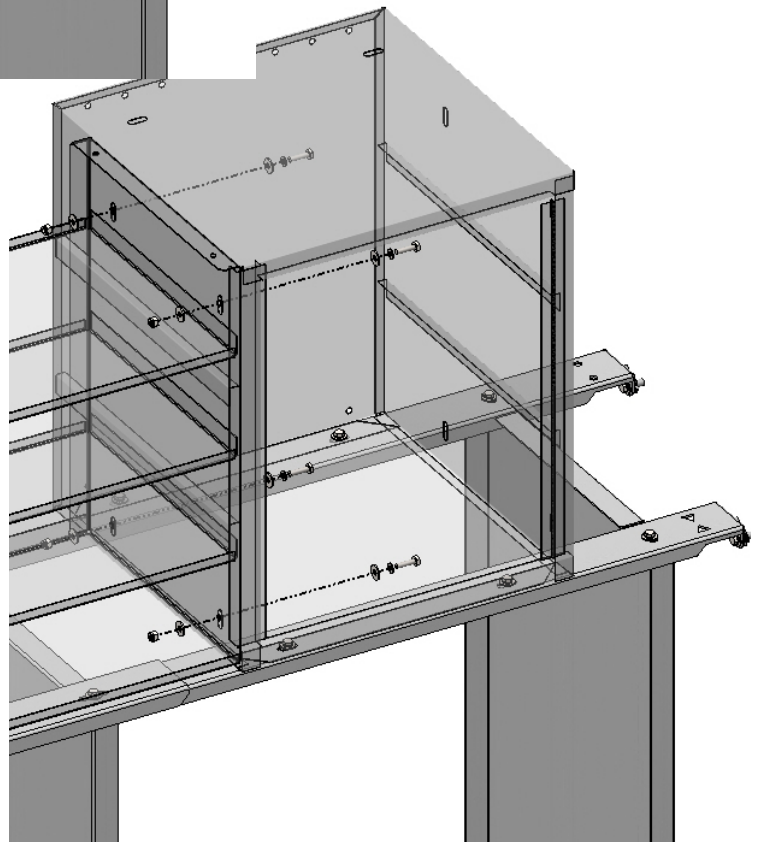
PLACE 49818 ADRIAN FOUR CASE HOLDER BETWEEN THE TWO 49815 CAB UNITS, FASTEN CAB TO CASE HOLDER. FASTEN THRU THE CAB UNITS (4) SLOTS THRU THE (4) HOLES IN THE SIDES OF THE CASE HOLDER. USE IN CAB (2) FAS0078 HH SCREWS 1/4-20 X 1.0, (4) FAS0060 1/4 LOCK WASHERS, AND (4) FAS0067 1/4 FLAT WASHER, . ATTACH ON INSIDE CASE HOLDER WITH (4) FAS0067 FLAT WASHERS, AND (4) FAS0058 1/4-20 NYLOC NUTS. DO NOT FULLY TIGHTEN.

REPEAT ON OPP SIDE CAB UNIT TO CASE HOLDER



FRONT PASS SIDE SHOWN

FAS0078 HH SCREW 1/4-20 X 1.0
FAS0060 1/4 SPLIT LOCK WASHER
FAS0067 1/4 FLAT WASHER
(4) PLACES
SOME PARTS ARE REMOVED
FOR CLARITY



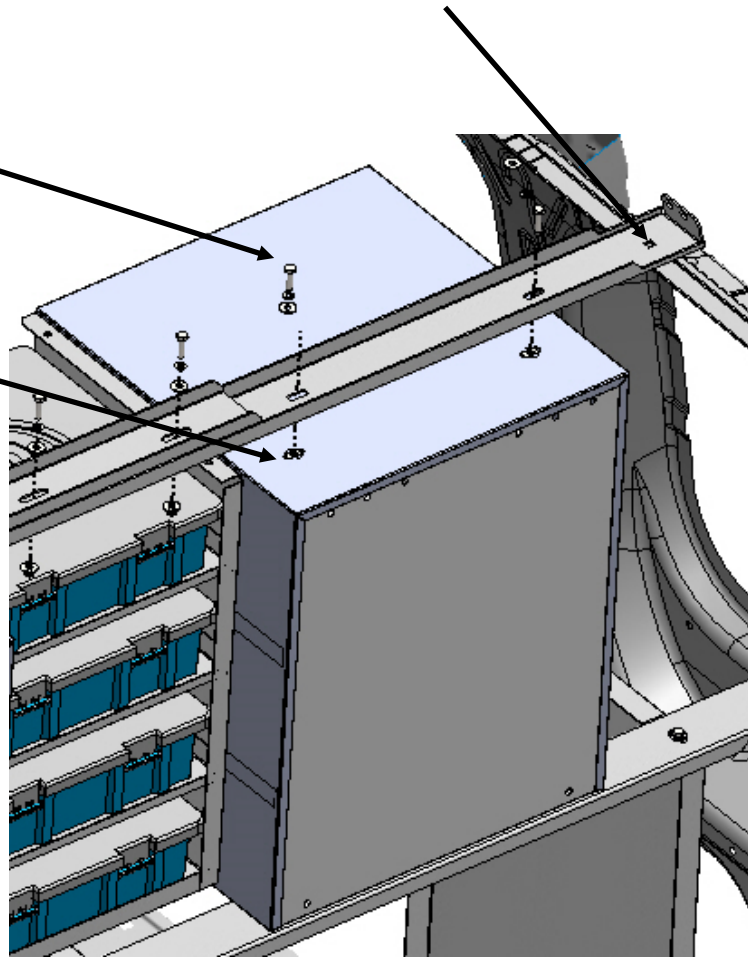
STEP 9

PLACE 50151-G TRUSS UPPER CS ON CASE HOLDER AND CAB UNIT CURB SIDE ATTACH TO CAB WITH (2) FAS0078 HH SCREW 5/16-18 X 1.0, (2) FAS0060 1/4 LOCK WASHERS, (2) FAS0067 1/4 FLAT WASHERS, ON INSIDE OD CAB USE (2) FAS0067 1/4 WASHERS, AND (2) FAS0058 1/4-20 NYLOC NUTS

REF SINGLE SQUARE HOLE IN TRUSS

FAS0078 HH SCREW 1/4-20 X 1.0
FAS0060 1/4 SPLIT LOCK WASHER
FAS0067 1/4 FLAT WASHER

IN CAB USE
FAS0067 1/4 FLAT WASHER
FAS0058 1/4-20 NYLOC NUTS
(2) PLACES



DO NOT FULLY TIGHTEN

STEP 10

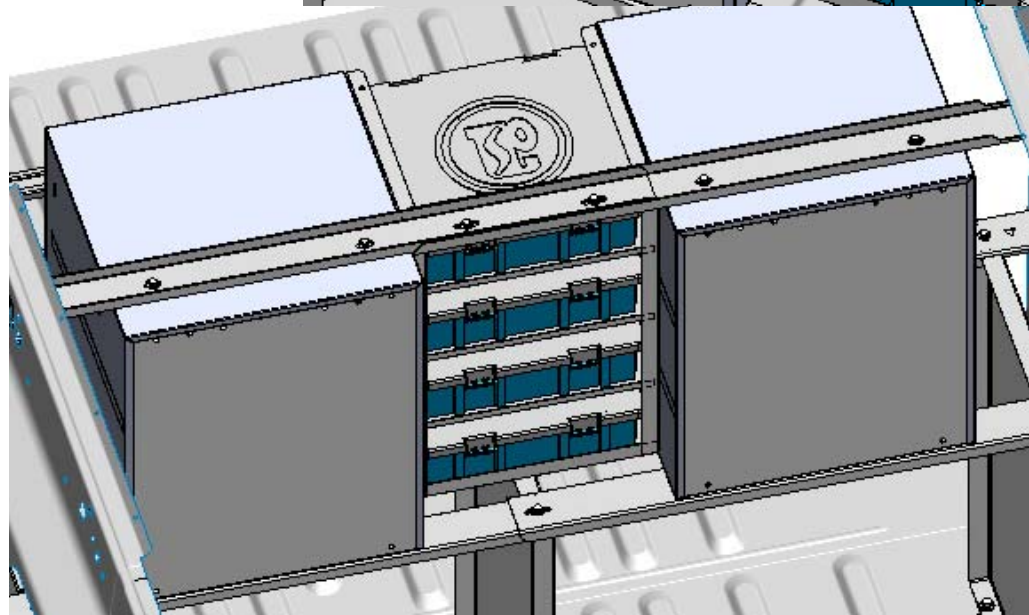
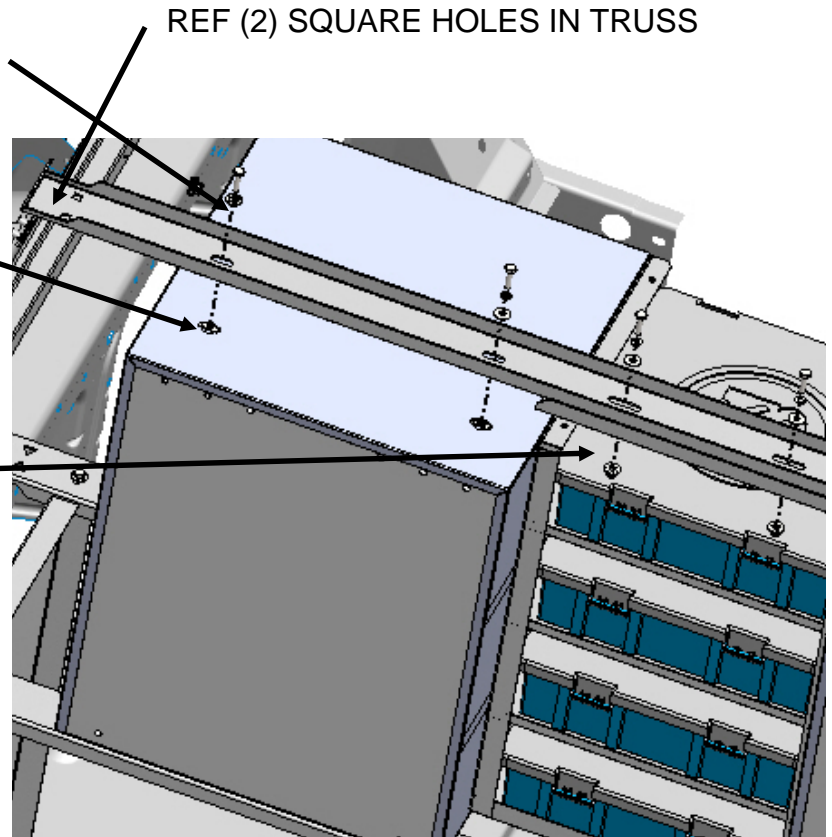
PLACE 50152-G UPPER TRUSS STREET SIDE INTO 50151-G UPPER TRUSS CURB SIDE. ATTACH AS SHOWN TO CAB CURB SIDE, AND 50152-G TO 50151-G USING FAS0078 1/4-20 X 1.0 HH SCREWS, FAS 0060 LOCK WASHERS, FAS0067 1/4 FLAT WASHERS, AND IN CAB UNDER 50151-G USE FAS0067 1/4 FLAT WASHERS AND FAS0058 1/4-20 NYLOC NUT.

FAS0078 HH SCREW 1/4-20 X 1.0
FAS0060 1/4 SPLIT LOCK WASHER
FAS0067 1/4 FLAT WASHER

IN CAB USE
FAS0067 1/4 FLAT WASHER
FAS0058 1/4-20 NYLOC NUTS
(4) PLACES

THESE FASTENERS DO NOT
TOUCH OR GO IN TO THE CASE
HOLDER

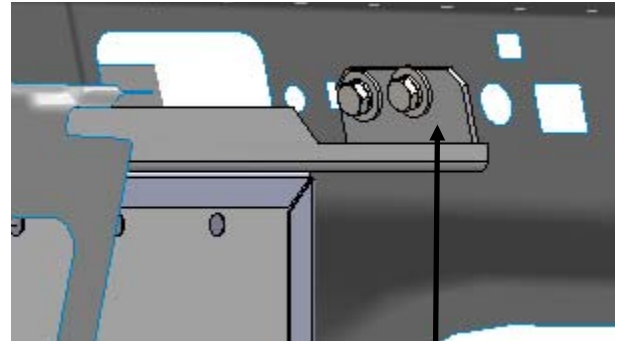
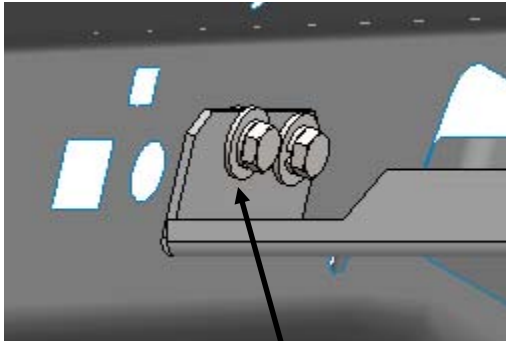
VIEWS FROM REAR



DO NOT FULLY TIGHTEN

STEP 11

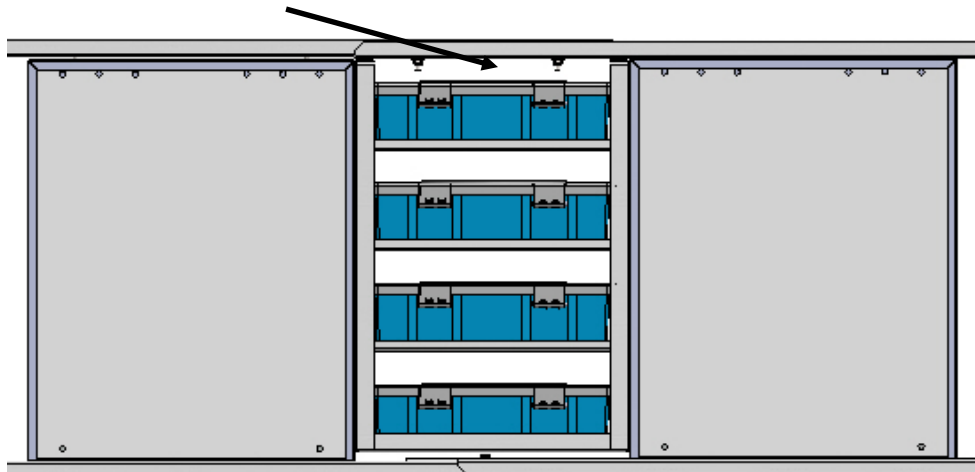
ADJUST BOTH UPPER TRUSSES TO SIDE WALL OF VAN, MARK FOR 1/4 PLUS NUTS. YOU MAY NEED TO MOVE TRUSSES BEFORE DRILLING AND SETTING PLUS NUTS. REF PAGE 3. RESET TRUSSES AND FASTEN TO VAN WITH FAS0078 1/4-20 X 1.0 HH SCREWS, FAS0060 1/4 LOCK WASHERS, AND FAS0067 FLAT WASHERS, (4) OF EACH TORQUE TO 8-10 FT LBS



FAS0078 HH SCREW 1/4-20 X 1.0
FAS0060 1/4 SPLIT LOCK WASHER
FAS0067 1/4 FLAT WASHER
(2) PLACES PER TRUSS
REAR DRIVERS SIDE SHOWN
SOME PARTS ARE REMOVED
FOR CLARITY

FAS0078 HH SCREW 1/4-20 X 1.0
FAS0060 1/4 SPLIT LOCK WASHER
FAS0067 1/4 FLAT WASHER
(2) PLACES PER TRUSS
REAR PASS SIDE SHOWN
SOME PARTS ARE REMOVED
FOR CLARITY

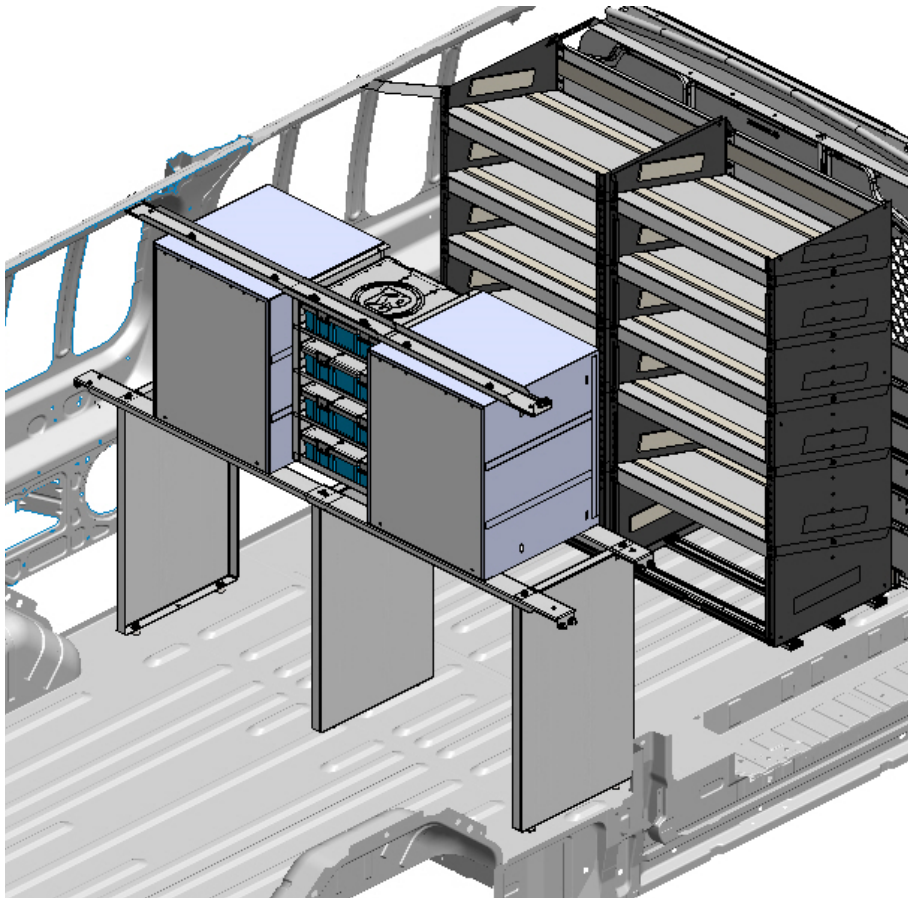
VIEW TO SHOW SCREWS DO NOT GO IN TO CASE



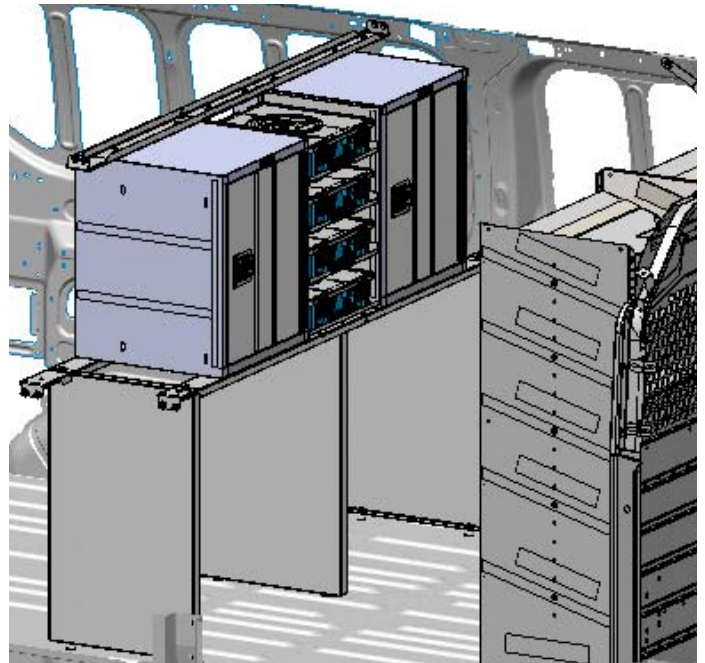
VIEW FROM REAR

STEP 12

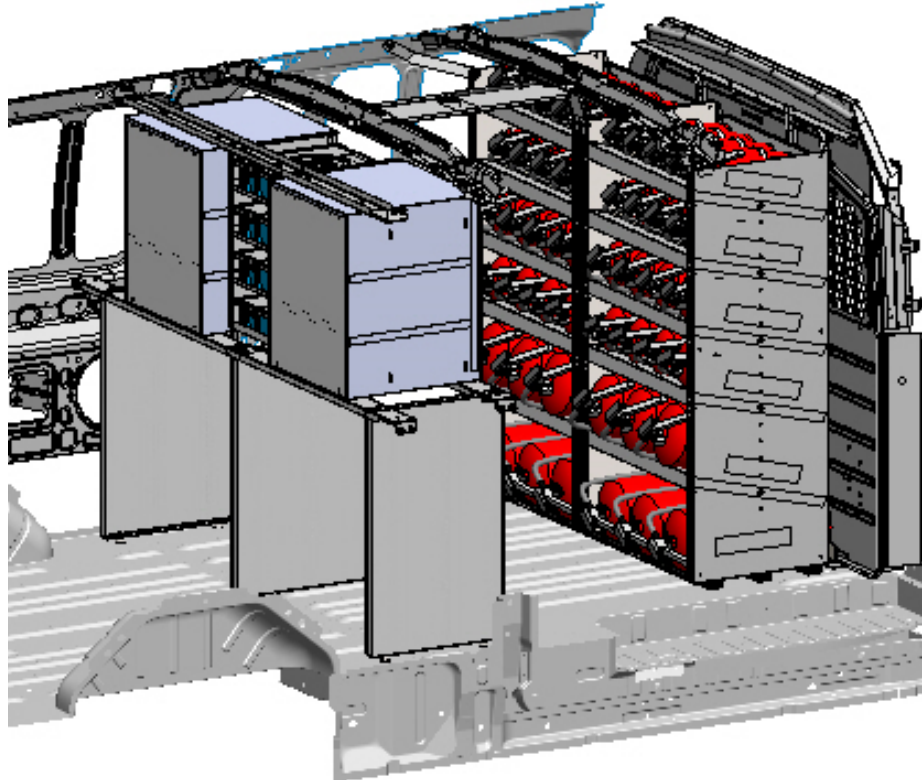
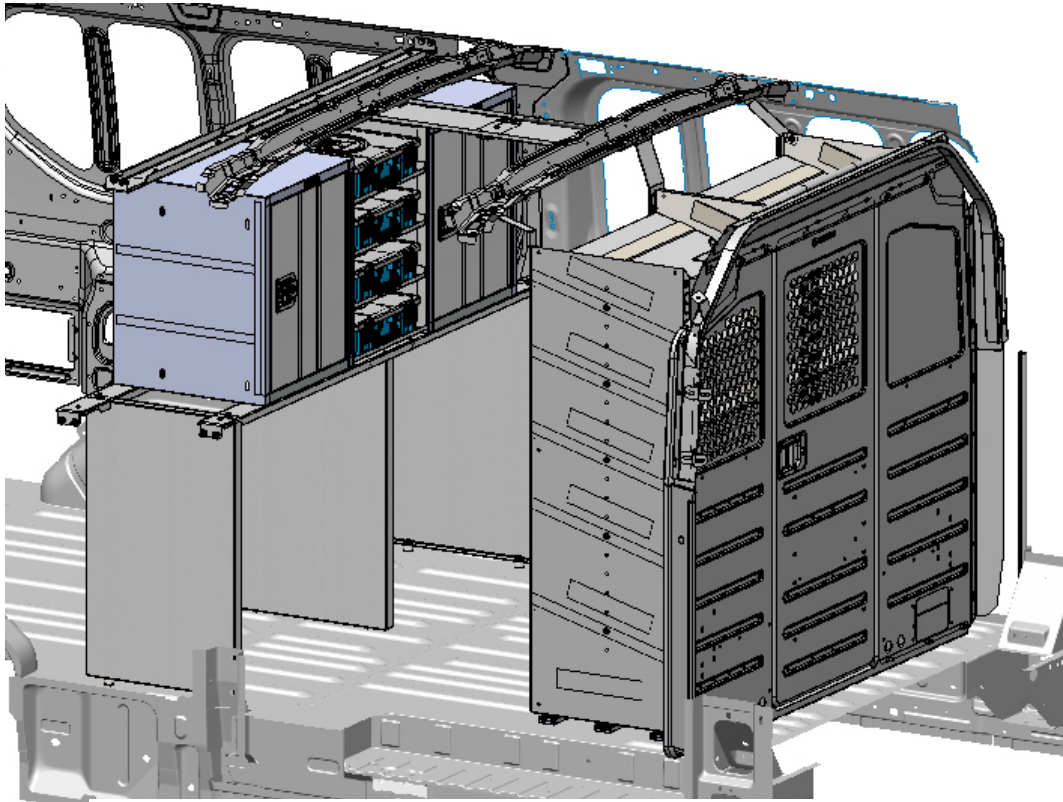
SQUARE UP UNITS AND FINAL TIGHTEN. 1/4-20 FASTENERS TORQUE 8-10 FT LBS



VIEW FROM REAR

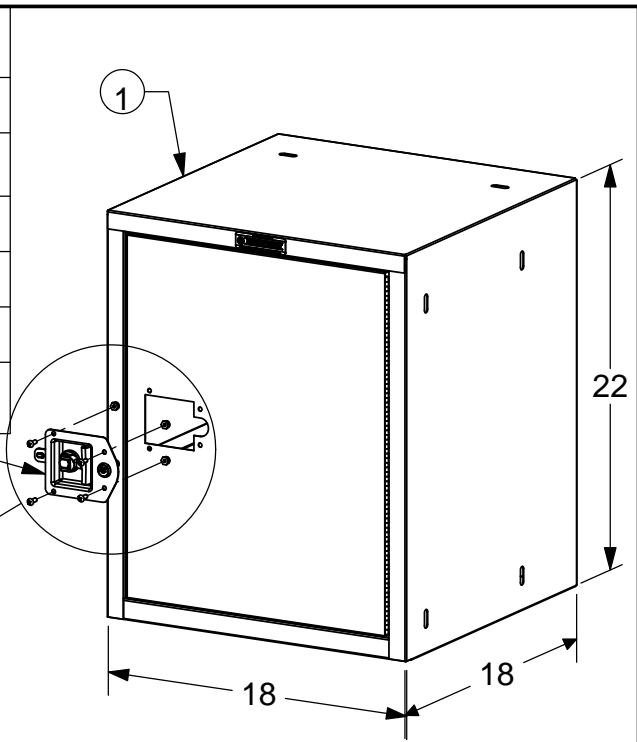


VIEW FROM FRONT PASS SIDE

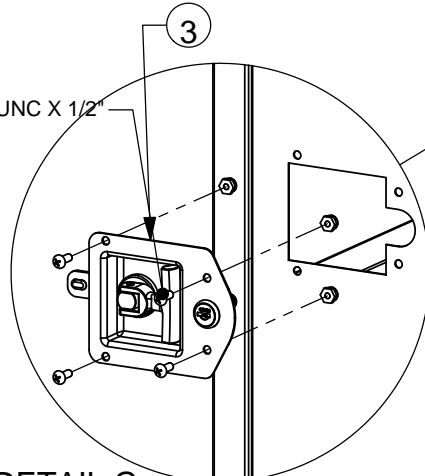


**DOUBLE CHECK ALL FASTENERS LOCATIONS TO BE SURE THAT ALL
FASTENERS ARE TIGHTENED TO SPECIFICATIONS.
YOUR INSTALLATION IS NOW COMPLETE!
STOW THIS COPY IN THE VEHICLE FOR FUTURE REFERENCES!**

ITEM NO.	PART NUMBER	DESCRIPTION	QTY.
1	49928-G	REV DOOR CAB	1
	LOGO-SM	.875"X3.0"ADRIAN STEEL LO	1
2	07088-0	BOTTOM, #1 CABINET	1
3	21000-0	Folding T-Handle	1
4	1A	SHELF, #1 CABINET	1

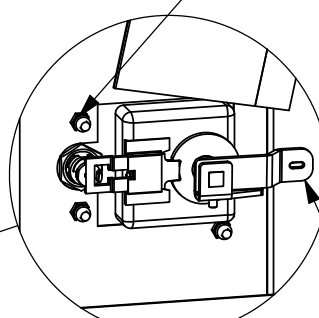


FAS0021
SCREW, RHP, #10-24UNC X 1/2"
QTY = 4



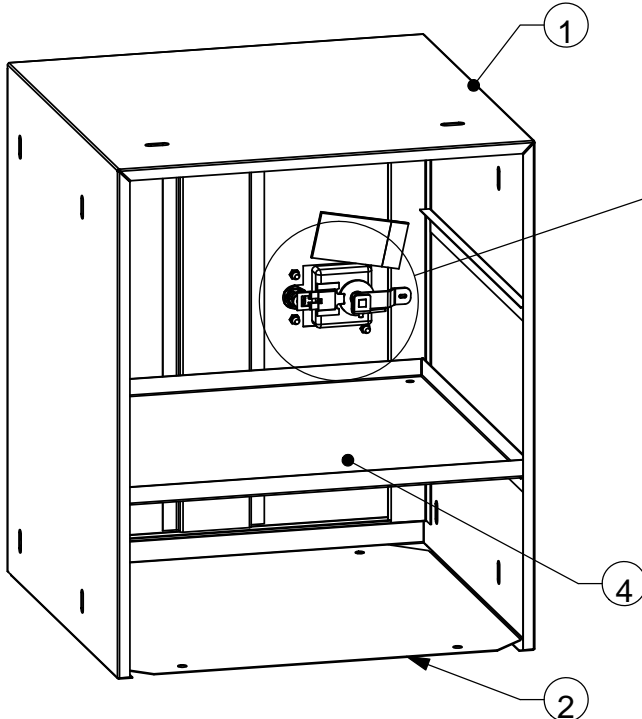
DETAIL G
SCALE 1 : 5

FAS0029
NUT, NYLON, LOCK, #10-24 UNC
QTY = 4



DETAIL H
SCALE 1 : 4

LATCH PAWL, ADJUST POSITION AS REQ'D. SECURE W SET SCREW



NOTES:

- 07088-0 "CABINET BOTTOM" SHIPPED LOOSE WITH 1A "SHELF, FOR #1 CAB."
- BACK PANEL OF CABINET NOT SHOWN IN VIEW SO THAT INSTALLATION HDW ARE VISIBLE.

PRINTED DOCUMENT IS UNCONTROLLED

Sheet 1 of 1

THIS PRODUCT IS SUBJECT TO CHANGE. ADRIAN STEEL COMPANY RESERVES THE RIGHT TO CHANGE THE PRODUCT OF IT'S DESIGN WITHOUT PRIOR NOTICE.

THIS DRAWING IS THE PROPERTY OF ADRIAN STEEL COMPANY AND IS NOT TO BE USED IN ANY MANNER DETRIMENTAL TO THE INTERESTS OF ADRIAN STEEL COMPANY.

Shipping Wt. (Lbs.):

31.57

Coating/Finish:

GrayPwcdt

Do Not Scale This Drawing!



906 James St.
Adrian, MI 49221
517.265.6194

Part Description: **CAB,18X22X18, REV DOOR**

Part Number: **49816**

REVISION LEVEL: **B**

for reference only!

REVISION LEVEL: **B**

Part Number: **49816**

Part Number: