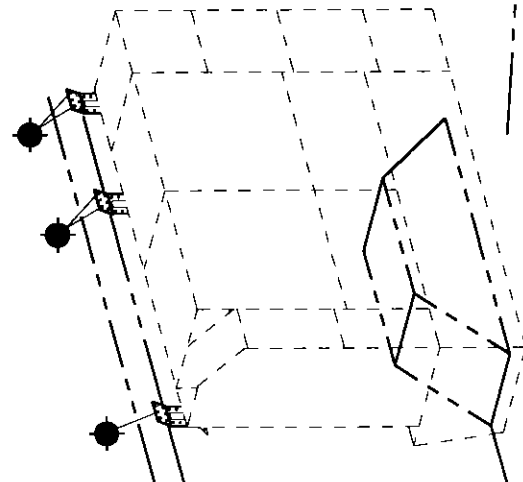


FASTENER GROUPS LISTED BELOW ARE USED FOR ASSEMBLY AND INSTALLATION. **SOME ASSEMBLY DRILLING IS REQUIRED.** PARTITION INSTRUCTIONS & FASTENERS ARE WITH THAT UNIT. USE 40 UNIT DRAWINGS TO IDENTIFY THEIR SEPARATE PARTS. CUSTOMER SPECIFIED SHELF DIMENSIONS ARE SHOWN HERE.

SYM.	FASTENERS	QTY	DRILL
ASSEMBLY FASTENERS IN CARTONS			
●	{ #8-32 x 3/8" THP.SCW.	(1) }	9/32
●	{ #8-32 HEX FLANGE NUT	(1) }	
●	{ #14 THP. SCREW	(1) }	9/32
●	{ 1/4 EXT. L'WASHER	(1) }	
●	{ 1/4-20 x 3/8" THP.SCW.	(1) }	9/32
●	{ 1/4 EXT. L'WASHER	(1) }	
●	{ 1/4-20 x 1/2" THP.SCW.	(1) }	9/32
●	{ 1/4-20 HX. FLANGE NUT	(1) }	
●	{ 1/4-20 x 3/4" HX.HD.SCW.	(1) }	9/32
●	{ 1/4-20 HX. FLANGE NUT	(1) }	
INSTALLATION FASTENERS IN CARTONS			
●	{ 1/4-20 PLUSNUT "PB"	(4) }	
●	{ 1/4-20 x 1" HH.SCW.FT	(4) }	13/32
●	{ 1/4 PLN WASH	(4) }	
●	{ 1/4 SPLIT RING L'WASHER	(4) }	
●	{ 1/4-20 PLUSNUT "PB"	(3) }	
●	{ 1/4-20 x 1-1/2" HH.SCW.FT	(3) }	13/32
●	{ 1/4 PLN WASH	(3) }	
●	{ 1/4 SPLIT RING L'WASHER	(3) }	
●	{ 1/4 PLN. WASHER	(6) }	
●	{ 1/4-20 HX.STOP NUT	(3) }	9/32
●	{ 1/4-20 x 1-1/2" HH.SCW.FT	(3) }	
●	{ 1/2 PLN. WASHER	(3) }	
	PLUSNUT TOOL	(1)	



CAUTION:
DRILL THRU FLOOR WITH CARE
WATCH FOR GAS TANK, CONTROL
LINES, & ELECTRICAL WIRING.

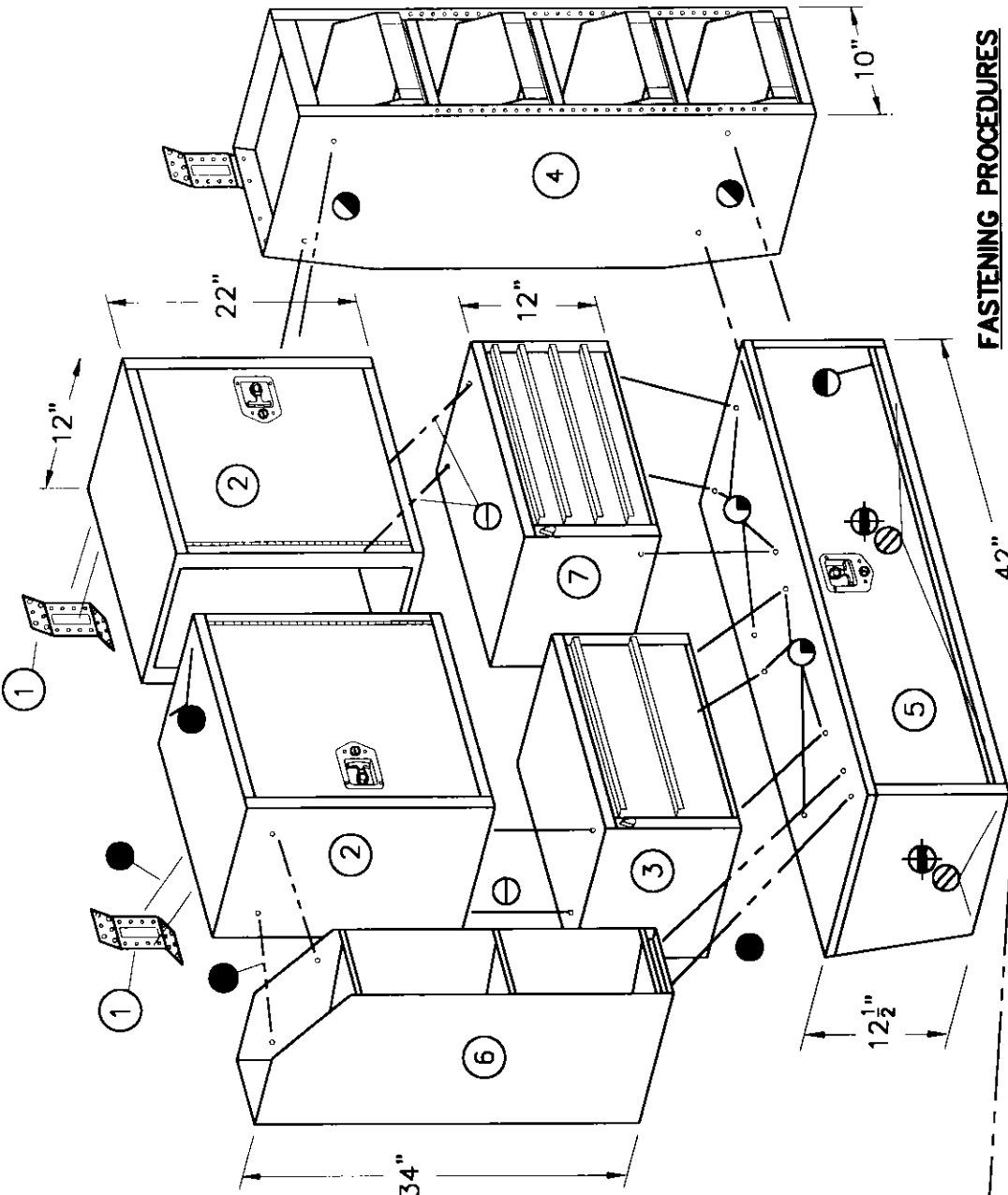
ADRIAN STEEL CO.
908 JAMES STREET
ADRIAN, MI 49221
517/285-6184

MD534 MODULE SPECIAL
DWR/CAB/RACK UNIT
14 x 46 x 52

DWG BY	ECN#	DATE	C-K'D BY	PACKAGE#	ISS
JLC	7398	6/02/04	elo	MD534	A

ITEM	PART NO.	DESCRIPTION	QTY.
1	MB111	MOUNT BRACKET W/FAS	2
2	12	CABINET 12x22x18	2
3	19	2-DRAWER MEDIUM	1
4	33WB	SHELF / RACK WITH BINS	1
5	40	WHEELHOUSE BIN - KO	1
6	43	CATALOG FILE 34"	1
7	9	4-DRAWER SHALLOW	1

ASSEMBLE EACH CABINET/DRAWER UNIT WITH ASSEMBLY SHEETS INCLUDED WITH EACH UNIT. SQUARE EACH BEFORE JOINING TOGETHER.
MATCH EACH COMPONENT UP AND USE ALL JOINING FASTENERS TO TIE EACH COMPONENT TOGETHER.
UNIT IS SHOWN FOR STREET SIDE INSTALLATION. AND CAN BE ASSEMBLED OPPOSITE IF REQUIRED.



FASTENING PROCEDURES

1. USE NUT & BOLT THRU WHEREVER POSSIBLE.
2. USE PLUSNUTS FOR BLIND FASTENING.
3. USE SHEET METAL SCREWS IN SHEAR ONLY.

APPLICATION OF UNIVERSAL MOUNTING BRACKET #8308-0

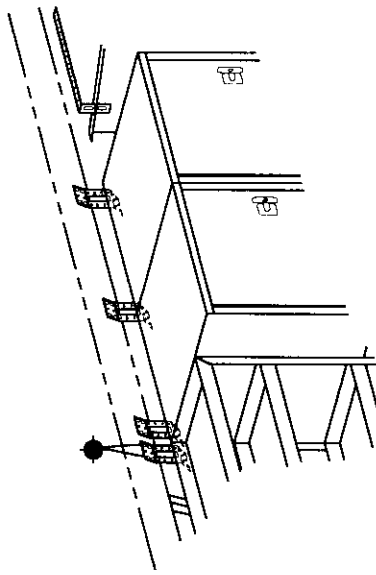


FIG. 1

CABINETS BELOW THE HEADER RAIL WILL NEED THE UNIVERSAL MOUNTING BRACKET AT EACH END OF ADJOINING CABINETS, AS SHOWN IN FIG'S 1, 2, & 3.

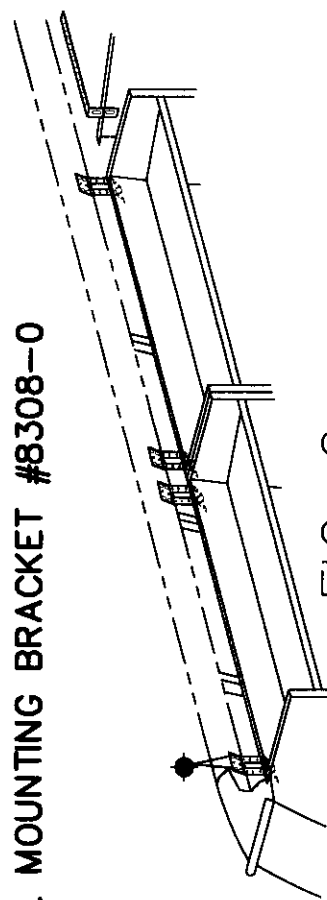


FIG. 2

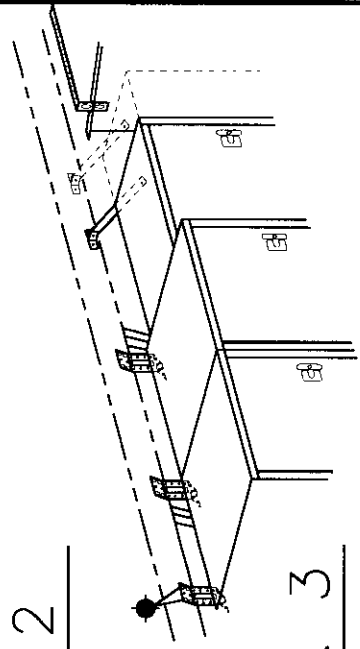


FIG. 3

OBSTRUCTIONS ON THE HEADER RAIL SUCH AS THE SHOULDER BELT ANCHOR, MAY REQUIRE A DIFFERENT TYPE OF MOUNTING BRACKET TO POSITION THE CABINETS OUT & AWAY FROM THE HEADER RAIL AS SHOWN IN FIG. 3.

FIG. 4

TYPICAL POSITIONING OF MOUNTING BRACKET FOR EACH STYLE HEADER RAIL.

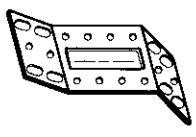
1996 & OLDER
CHV/GMC

DODGE

91 & OLDER FORDS

1997 CHV/GMC

1992 & NEWER FORD



NEW STYLE 1995

#8308-0 UNIVERSAL MOUNTING BRACKET
(REVISED MAY OF 1995)

EN- 4758

DATE: MAY/3/99



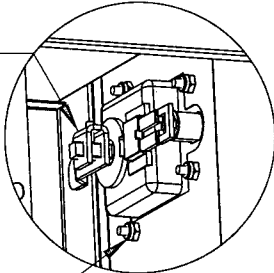
ADRIAN STEEL COMPANY

906 JAMES STREET ADRIAN, MI 49221

cabinets designed to serve

ITEM NO.	PART NUMBER	DESCRIPTION	12/QTY.
1	10068-0	CABINET SUB-ASM, #12, (3862)	1
2	21000-0	Folding T-Handle	1
3	BAG0002-0	#2 BAG FOR #12, 38, 43, 51, CBS #7	1
4	CRT03862-0	CARTON #12 / SPECIAL PKG	1
5	CRT03862-A	CARTON, PAD FOR #12	1
6	12B	SHELF PANEL (#12 CABINET)	1

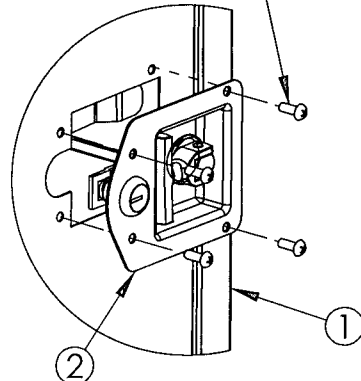
LATCH PAWL, ADJUST POSITION
AS REQ'D
SECURE w/SETSCREWW, #8-32x1/2"



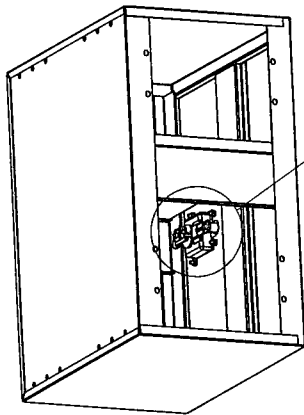
FAS0029
NUT, NYLON LOCK, #10-24UNC
QTY = 4

DETAIL B
SCALE 1 : 4

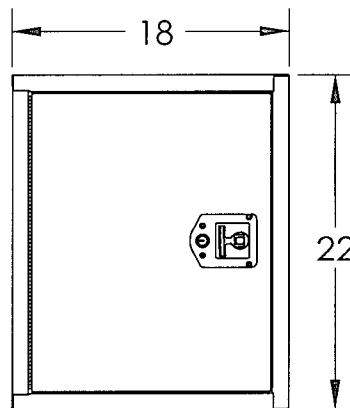
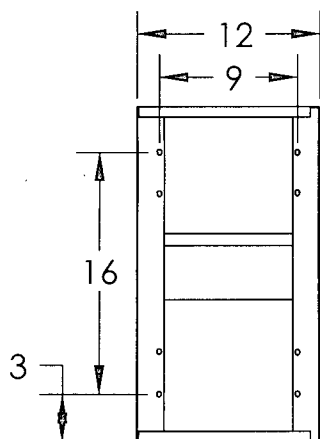
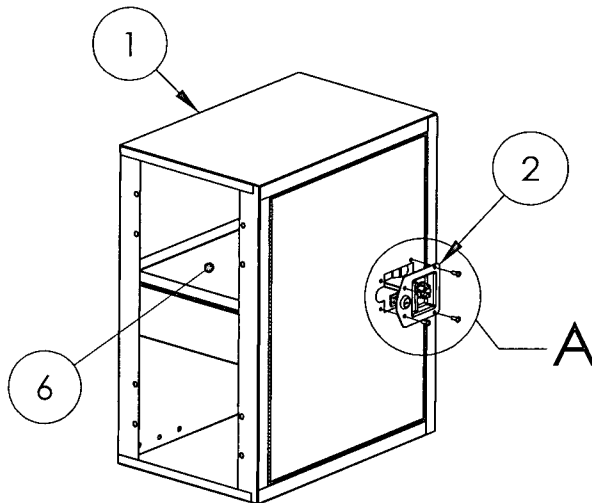
FAS0021
SCREW, RHP, #10-24UNC X 1/2"
QTY = 4



DETAIL A
SCALE 1 : 4



B



PRINTED DOCUMENT IS UNCONTROLLED

Sheet 1 of 1

THIS PRODUCT IS SUBJECT TO CHANGE.
ADRIAN STEEL COMPANY RESERVES THE RIGHT TO
CHANGE THE PRODUCT OF IT'S DESIGN WITHOUT
PRIOR NOTICE.

THIS DRAWING IS THE PROPERTY OF ADRIAN STEEL COMPANY
AND IS NOT TO BE USED IN ANY MANNER DETRIMENTAL TO
THE INTERESTS OF ADRIAN STEEL COMPANY.

Shipping Wt. (Lbs.):

21.257

Coating/Finish:

GrayPwddct

Do Not Scale This Drawing!

ADRIAN STEEL
VAN AND PICKUP EQUIPMENT
906 James St.
Adrian, MI 49221
517.265.6194

Part Description: **CABINET 12 X 22 X 18**

Part Number: **12**

REVISION
LEVEL:

C

REVISION
LEVEL: **C**

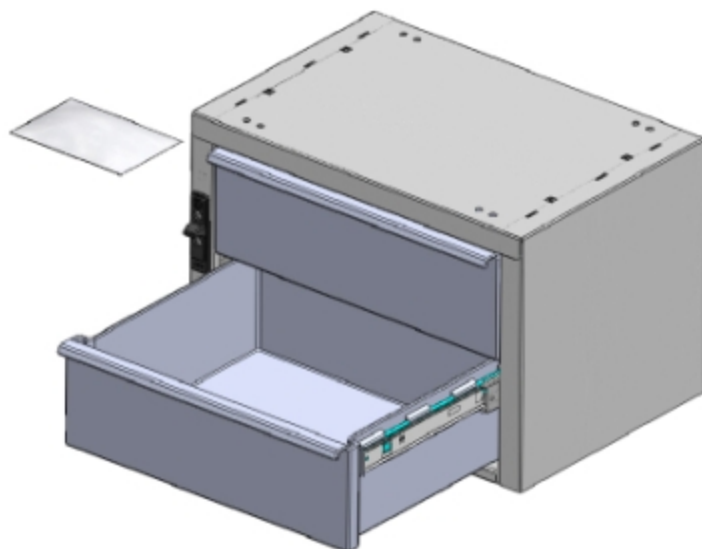
Part
Number: **12**

FOR REFERENCE ONLY!

**ADRIAN STEEL**

Cargo Management Solutions for Commercial Vehicles

19, 2-DRAWER MEDIUM

*PRODUCT WEIGHT***27.4 lbs.***WIDTH x DEPTH x HEIGHT***18 x 12 x 12***CAPACITY***25 LBS. PER DRAWER***COLOR***GRAY***CATALOG NUMBER***19***PRODUCT FEATURES*

The drawer unit body is a sturdy welded and painted steel housing. The housing has ¼-20 riv-nuts installed into the base of the unit for easy installation. Also included are pre-drilled mounting holes in the top of the cabinet to allow for quick and easy stacking of the units. The number 19 drawer unit includes two (2) polymer drawers that ride on full extension ball bearing glides. The drawers have an inside dimension of 13.50" wide X 4.5" deep X 11.50" length. Each cabinet includes a sliding latch/lock system designed to secure the drawers during vehicle movement. A cam lock allows for securing your inventory for more security.

PRODUCT APPLICATION

This product is designed to be used in and/or on ADRIAN STEEL shelving units and can also be used as a standalone product. The product is great for small parts and supplies storage.

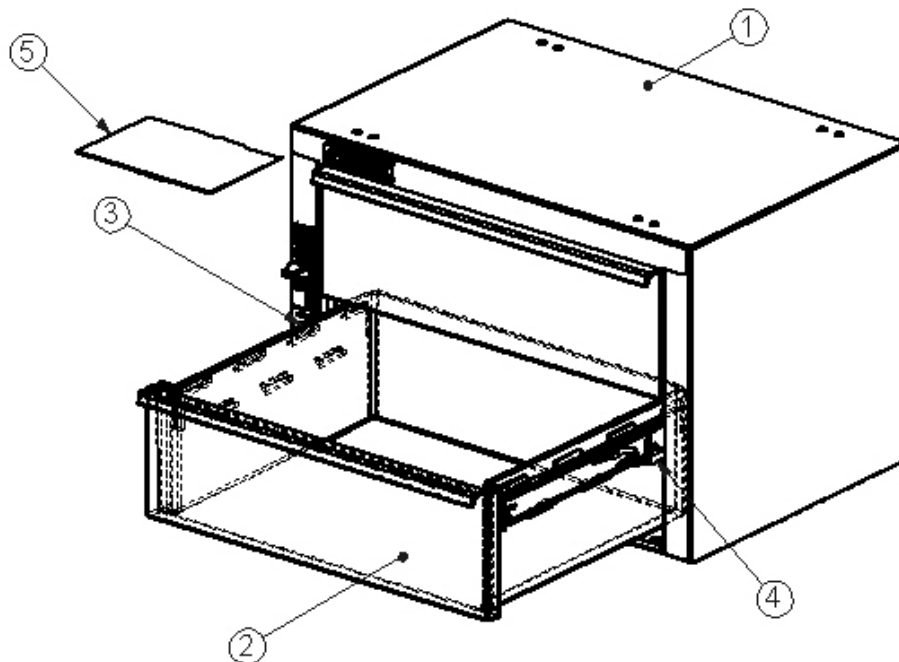
Introduction / Comments:

The drawer unit body is a sturdy welded and painted steel housing. The housing has 1/4-20 riv-nuts installed into the base of the unit for easy installation. Also pre drilled mounting holes in the top of the cabinet to allow for quick and easy stacking of units. 2 polymer drawers ride on ball bearing glides. Each cabinet includes a sliding latch/lock system designed to secure the drawers during vehicle movement. A cam lock allows for securing your inventory for more security

Note:

It is advised that all fasteners used in this assembly and installation should be checked for tightness at the following intervals: @ 2-weeks and again @ 6-weeks of operation. This preventive maintenance step must be completed to ensure your Product gives you long service life.

ITEM NO.	PART NUMBER	DESCRIPTION	19S/QTY.
1	39197-G	WRAPPER BODY ASSM	1
2	40016	DRAWER SUB ASSY. 19/919	2
3	40827-LH	250MM SLIDE, CABINET HALF, LH	2
4	40287-RH	250MM SLIDE, CABINET HALF, RH	2
5	BAG00001-0	FASTENER BAG 9,19,919	1



19 2 DRAWER MEDIUM

- PRECAUTIONS -





 **CAUTION** 
**THE USE OF AIR IMPACT TOOLS CAN
OVER-TORQUE FASTENERS AND
CAUSE FASTENER FAILURE!**





 **CAUTION** 
**ALL INSTALLATION HOLES SHOULD BE SEALED
WITH SILICON OR BUTYL SEALANT TO PREVENT
EXHAUST FUMES FROM ENTERING THE VEHICLE!**



 **DANGER** 
**INSPECT FOR FUEL TANK, FUEL LINES, BRAKE LINES, HIGH
VOLTAGE BATTERIES AND ELECTRICAL LINES PRIOR TO
DRILLING TO AVOID DAMAGING CRITICAL VEHICLE SYSTEMS
OR INJURY TO INSTALLER DURING INSTALLATION PROCESS!**



 **CAUTION** 
**TO AVOID DAMAGING THE VEHICLE ALWAYS USE DRILL
STOPS WHEN DRILLING ANY INSTALLATION HOLES!
ADRIAN AVAILABLE PART #'S 31119-0 (3/8" X 1/2"
DEEP), 31121-0 (1/2" x 1/2" DEEP)**



- IMPORTANT WARRANTY REQUIREMENTS -

1. SUBSTITUTING ADRIAN STEEL SPECIFIED FASTENERS FOR ASSEMBLY AND/OR INSTALLATION WILL VOID YOUR PRODUCT WARRANTY.
2. ALL HOLES DRILLED INTO VEHICLE SHOULD HAVE THE RAW METAL EDGES SEALED WITH A SELF-ETCHING PRIMER TO RESIST CORROSION AND POTENTIAL FASTENER POINT FAILURE.
3. ALL FASTENERS USED IN THE INSTALLATION OF THIS PRODUCT SHOULD BE TIGHTENED TO THE TORQUE(S) SPECIFIED IN THESE INSTRUCTIONS.
4. THESE INSTRUCTIONS SHOULD BE KEPT WITH THE VEHICLE.

THE BASIC TOOLS NEEDED FOR MOST INSTALLATIONS



DRILL



DRILL BIT WITH
STOP



RATCHET, SOCKETS
AND/OR WRENCHES



SCREWDRIVERS



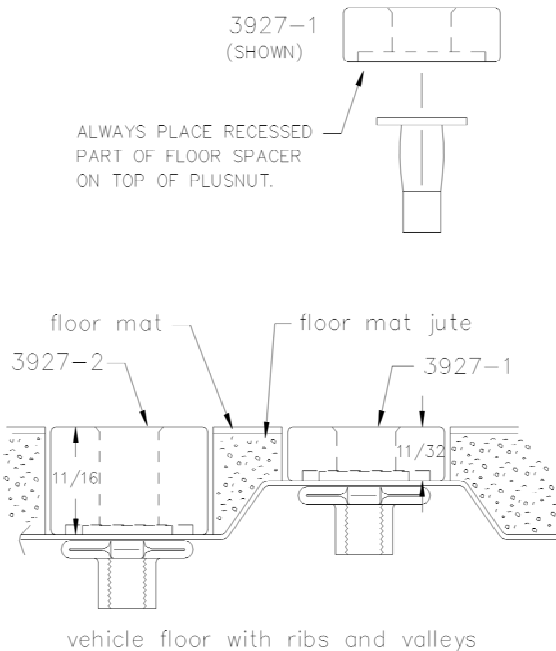
MEASURING TAPE

ADDITIONAL TOOLS MAY BE NEEDED FOR THIS INSTALLATION AND THEY WILL BE IDENTIFIED IN THE STEPS THAT FOLLOW.

If your vehicle contains carpet or a rubber floor mat you will need to prepare the mounting location. Position the product to be installed into the vehicle and once you are satisfied with the mounting locations, mark the mounting locations. Using a 1-3/16" diameter carpet cutter (P/N: 31183-0). Select the appropriate floor spacers as shown in the illustration. Set those aside for use later into the installation process. Using the correct drill bit size for the selected plusnut, drill the mounting holes in the vehicle sheet metal to prepare for installing the plusnuts.

If you are thru-bolting at any of the locations simply drill a hole that is 1/16" larger than the bolt size(s) for those locations.

Once you have drilled the holes into the vehicle, the raw metal edges should be sealed using a self-etching primer to resist corrosion and potential fastener point failure.



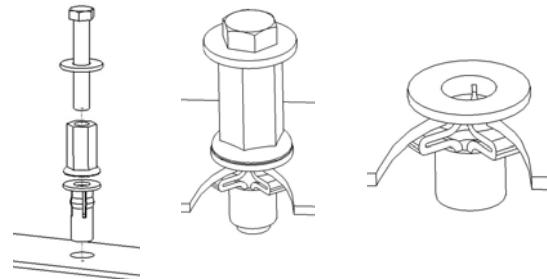
A PLUSNUT (RIVNUT) SETTING TOOL IS REQUIRED FOR PLUSNUT (RIVNUT) INSTALLATION . PLUS NUT SETTING TOOL CAN BE ORDERED THROUGH ADRIAN STEEL, OR USE AN AIR POWERED PLUSNUT SETTING GUN.

1/4-20UNC Plusnut (FAS0052) Use 3/8" dia. drill w/stop

FAS0080 SCREW, HXHD, 1/4-20UNCx2.00", G8
FAS0067 WASHER, FLAT, 1/4"ID
22200-0 PLUSNUT TOOL

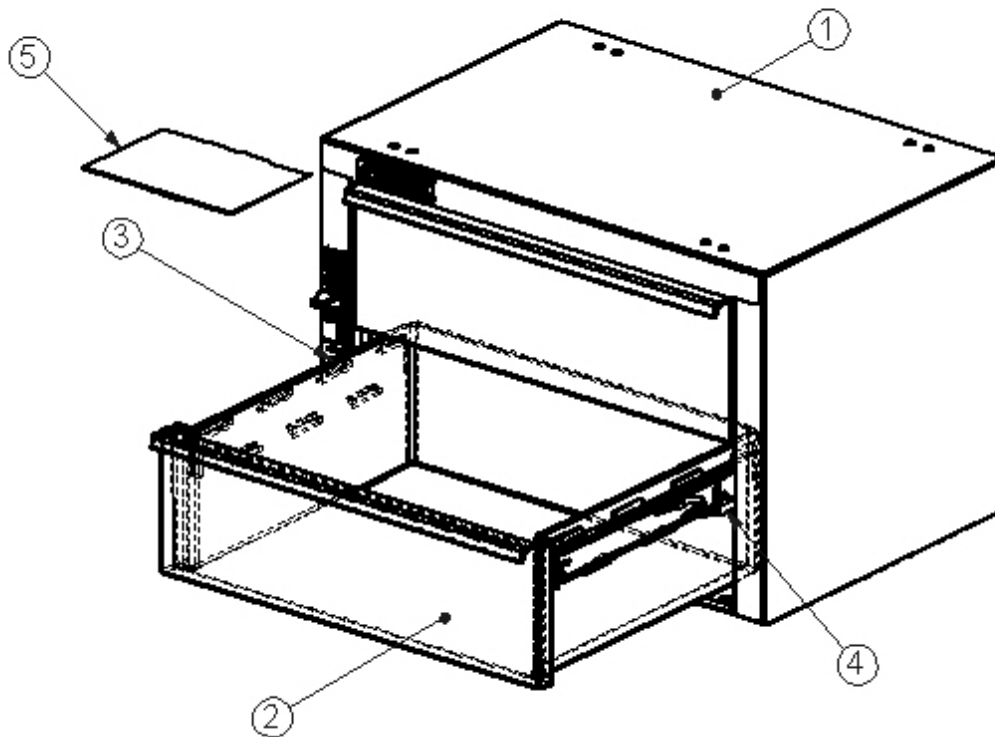
5/16-18UNC Plusnut (FAS0091) Use 1/2" dia. drill w/stop

FAS0095 SCREW, HXHD, 5/16-18UNCx2.00", G8
FAS0086 WASHER, FLAT, 5/16"ID
22200-0 PLUSNUT TOOL



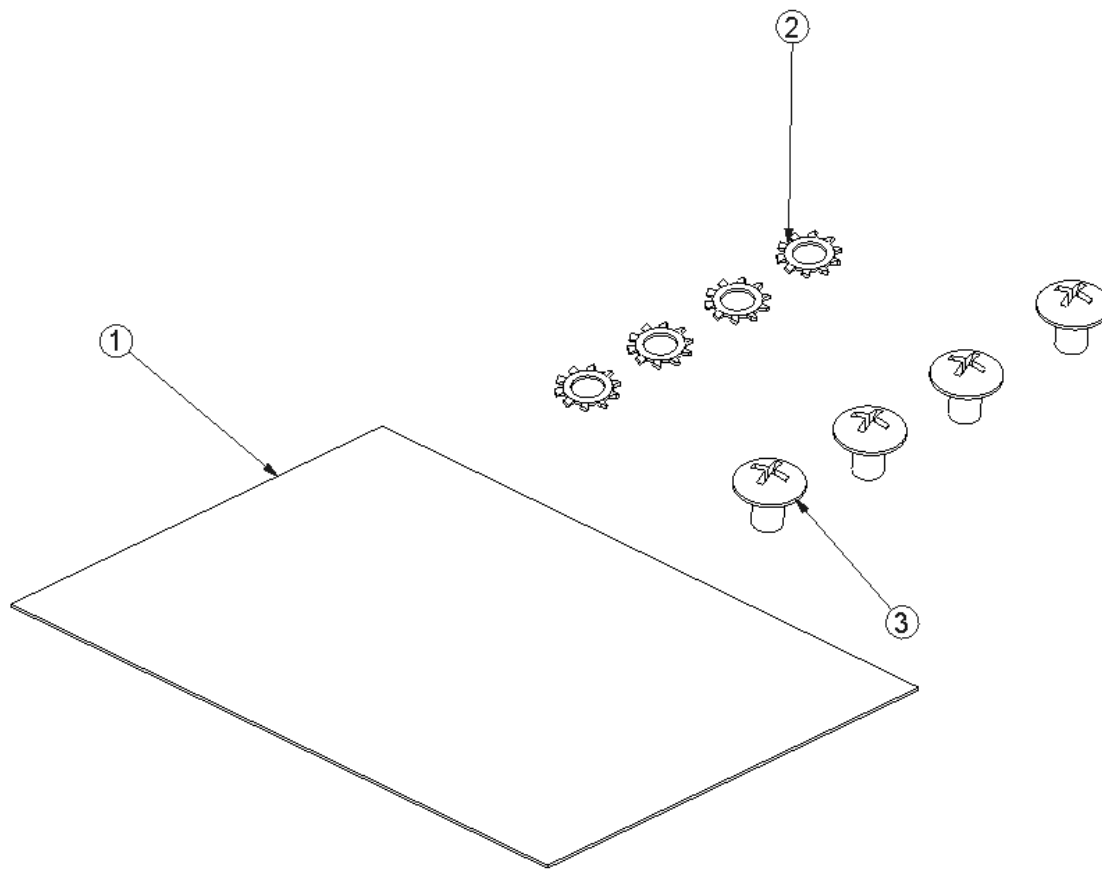
Place barrel of the plusnut body in sheet metal thru hole until flange is flush with sheet metal.

Using a 9/16" combination wrench of plusnut tool body and a second hand wrench, ratchet, or air tool, rotate the hex bolt head CW to draw plus nut flanges up (set the plusnut).

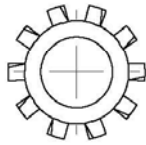


INSERT TWO (2) 40287-LH AND TWO (2) 40287-RH SLIDES INTO CABINET BODY.
INSERT TWO (2) 40016 DRAWERS INTO CABINET BODY.
PLACE BAG00001-0 INTO THE SECOND DRAWER. TAPE
THE LOCK KEYS INTO THE FRONT RIGHT BOTTOM OF THE SECOND
DRAWER AND CLOSE THE DRAWERS.

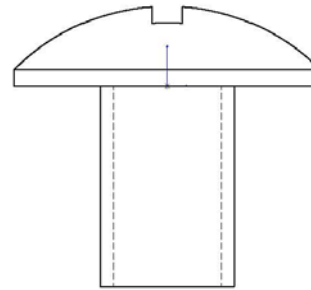
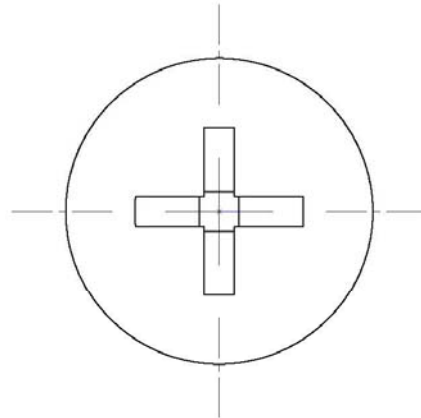
ITEM NO.	PART NUMBER	DESCRIPTION	BAG00001-0./QTY.
1	BAG0505-A	5" x 5" 3MIL AUTOBAG	1
2	FAS 0066	Washer, Lock, Ext. Tooth, 1/4	4
3	FAS0520	Screw, Truss Hd. Ph, 1/4-20x .375" lg	4



Individual Fastener Images & Descriptions

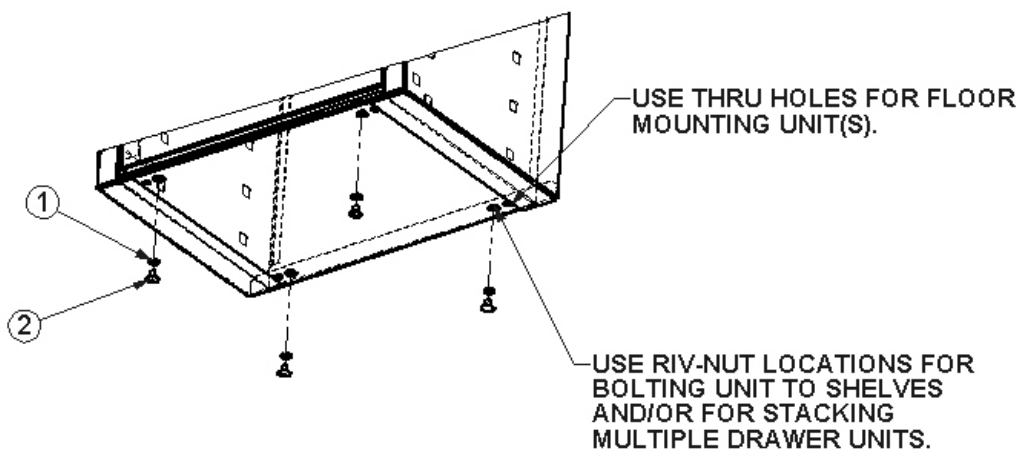
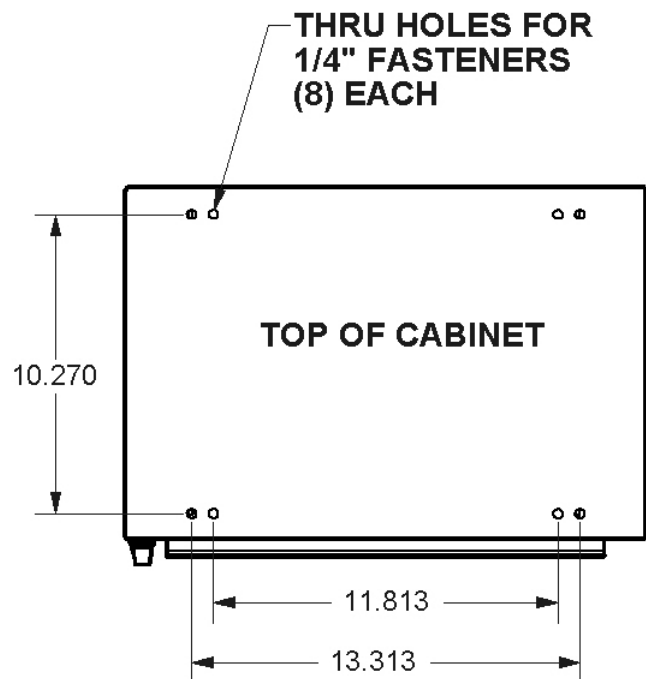
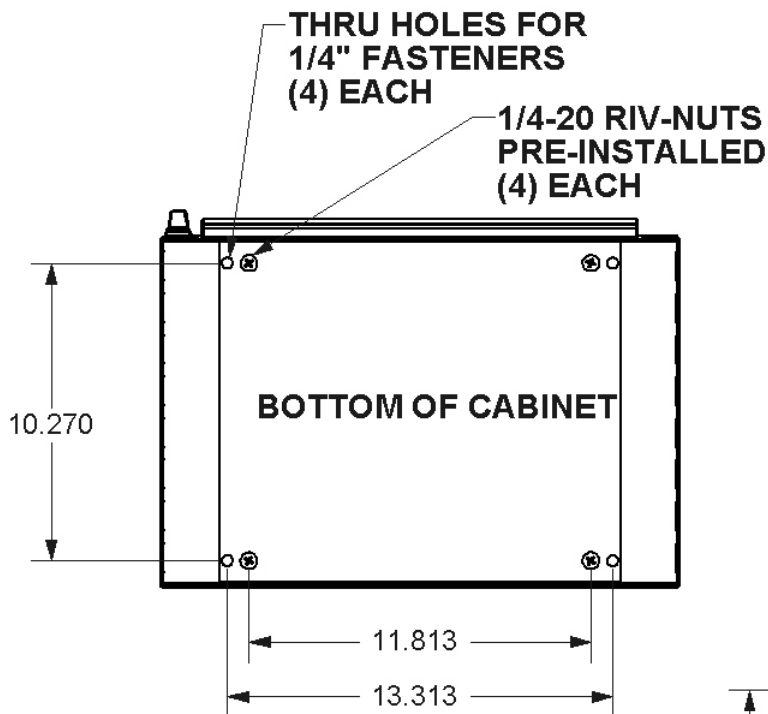


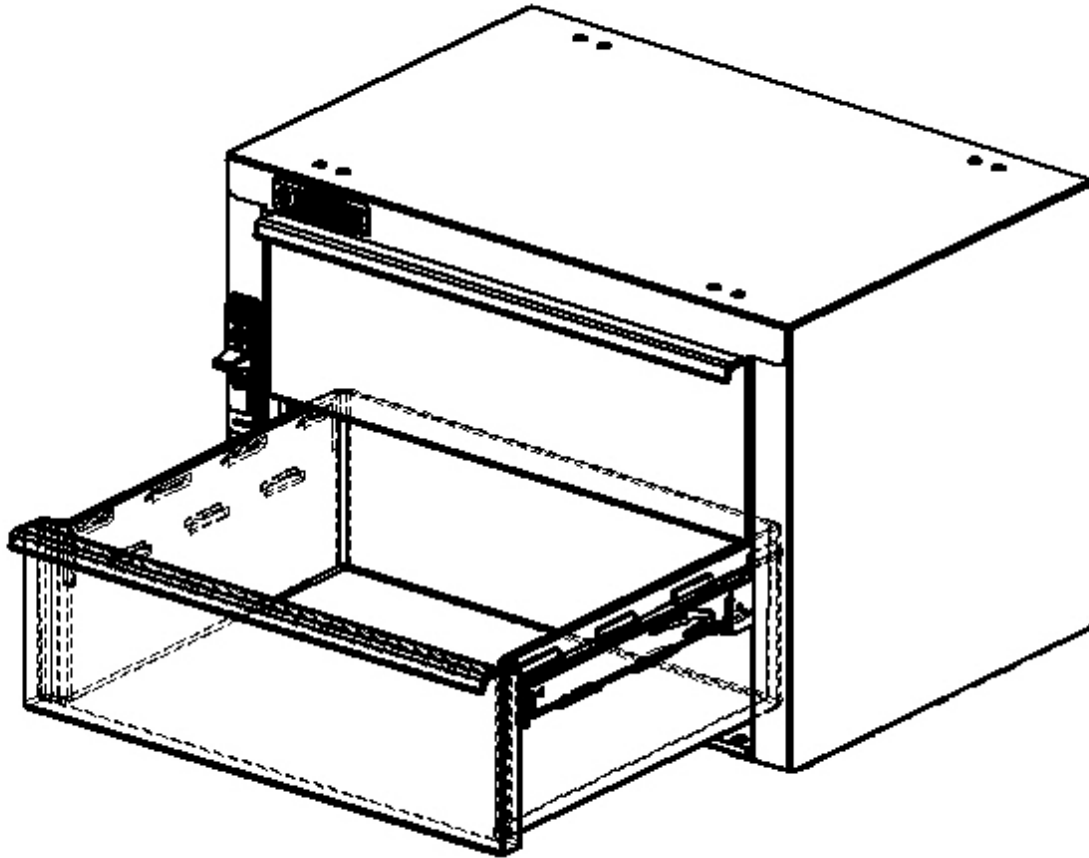
FAS0066
WASHER,LCK EXT 1/4 ZP



FAS0520
SCREW,THP 1/4-20 X .38
ZP

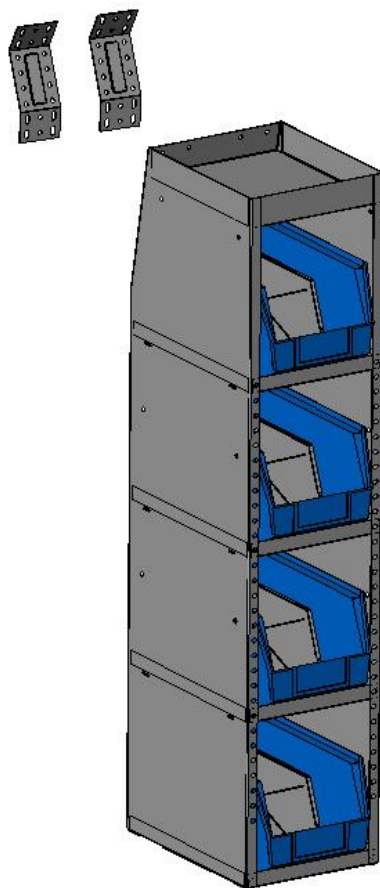
Step 01 Methods of Attachment





**DOUBLE CHECK ALL FASTENERS LOCATIONS TO BE SURE THAT ALL
FASTENERS ARE TIGHTENED TO SPECIFICATIONS.
YOUR INSTALLATION IS NOW COMPLETE!
STOW THIS COPY IN THE VEHICLE FOR FUTURE REFERENCES!**

SHELF/RACK WITH BINS INSTALLATION INSTRUCTIONS



**33WB SHELF/RACK WITH BINS
ALSO 33W (WITHOUT BINS)**

BEFORE YOU START!

IMPORTANT INSTALLATION STEPS ARE DENOTED USING A STOP SIGN. THESE STEPS MUST BE PERFORMED AS SPECIFIED IN ORDER TO ENSURE A PROPER INSTALLATION AND MUST BE FOLLOWED IN ORDER TO MAINTAIN YOUR PRODUCT WARRANTY!



CRITICAL INFORMATION PERTAINING TO USER AND/OR VEHICLE SAFETY IS DENOTED USING A CAUTION SIGN. SAFETY ITEMS MUST BE STRICTLY ADHERED TO IN ORDER TO ENSURE A SAFE WORKING ENVIROMENT!



YOU WILL NEED THE FOLLOWING TOOLS IN ORDER TO COMPLETE THIS JOB.

#3 PHILLIPS SCREWDRIVER	9/16" OPEN END WRENCH FOR SETTING PLUSNUTS, DRILL MOTOR, 3/8" DRILL BIT WITH 1/2" DEEP STOP
WRENCHES	RATCHET WRENCH, WITH 7/16" & 1/2" SOCKET TORQUE WRENCH

ALL FASTENERS USED IN THE ASSEMBLY AND INSTALLATION OF THIS PRODUCT SHOULD BE TIGHTENED TO THE SPECIFIED TORQUE AS LISTED WITH EACH FASTENER CALLOUT BOX.



THE USE OF AIR OR ELECTRIC IMPACT TOOLS FOR THE ASSEMBLY OF FASTENERS IS NOT RECOMMENDED AND COULD CAUSE FASTENER FAILURE!



WARNING



THE USE OF DRILLS WITH INTEGRAL DRILL STOPS ALONG WITH PROPER INSPECTION FOR GAS TANK, GAS LINES, BRAKE LINES AND ELECTRICAL LINES PRIOR TO DRILLING ANY MOUNTING HOLES IS STRONGLY RECOMMENDED TO ENSURE THAT VEHICLE DAMAGE IS AVOIDED!



THE USE OF NON-STANDARD FASTENERS AND/OR DEVIATING FROM THE FASTENERS SPECIFIED IN THE INSTRUCTION (S) MAY VOID YOUR PRODUCT WARRANTY!

Welded Shelf Unit Assembly/Install



ALL DRILLED HOLES IN THE VEHICLE SHOULD HAVE THE RAW METAL EDGES SEALED WITH A SELF-ETCHING PRIMER TO RESIST CORROSION AND POTENTIAL FASTENER POINT FAILURE!



TO PREVENT EXHAUST FUMES FROM ENTERING THE VEHICLE, ALL HOLES SHOULD BE SEALED AT INSTALLATION WITH BUTYL OR SILICON SEALANT MATERIAL.



Whenever a plusnut is specified it is important that the proper size installation hole is provided.

PLUSNUT SIZE		DRILL SIZE <i>(with stop)</i>
1/4-20 PLUSNUT, FAS0052		3/8" DIAMETER
5/16-18 PLUSNUT, FAS0091		1/2" DIAMETER

FOR MOUNTING THROUGH A FLOOR MAT AND/OR CARPET

Position each item in desired location inside the vehicle and mark the floor mounting locations.

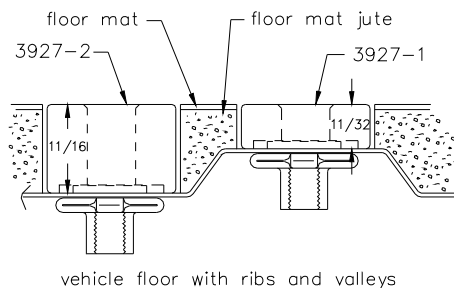
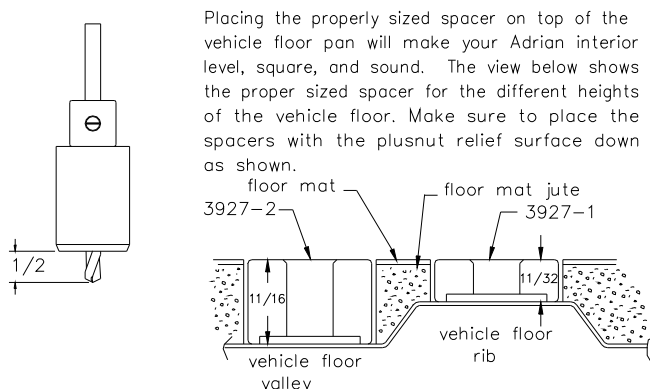
It is recommended that a drilling template be used to ensure an accurate placement of components is achieved for this installation.

Using the cutting tool, drill a pilot hole thru the mat/carpet and metal floor pan.

Spacer Use and Installation

3927-1
(SHOWN)

ALWAYS PLACE RECESSED PART OF FLOOR SPACER ON TOP OF PLUSNUT.



The location of various floor mounts will determine what spacer combination will be used. For example, an 11/32" spacer is used atop floor ribs, and an 11/16" high spacer is used atop floor valleys.

STOP

THE PROPER USE OF SPACERS IS REQUIRED WHEN MOUNTING OVER MAT/CARPET TO ENSURE THE METAL-TO-METAL CLAMP-UP, WHICH WILL PREVENT UNWANTED COMPONENT SHIFTING AND POTENTIAL FAILURE DURING USE.

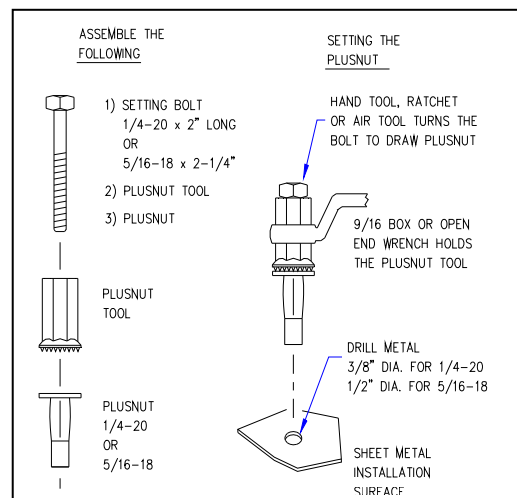
STOP

DRILLING AND SETTING PLUSNUT

Floor locations use the cutting tool to drill a pilot hole thru the mat/carpet and metal floor pan.

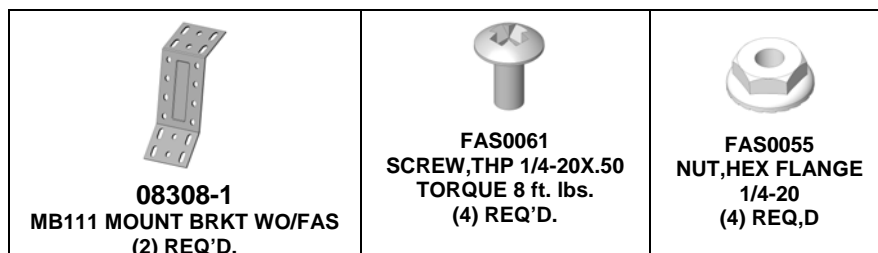
Floor and header rail locations: Use 3/8" drill bit with stop for header rail. Use 1/2" drill bit with stop for floor locations.

Clean up debris from drilling and coat the raw metal edges of all drilled holes with a self-etching primer. Install plusnuts.



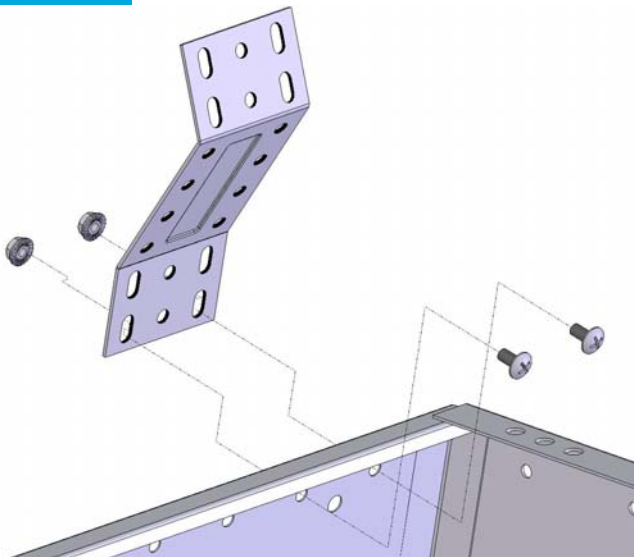
STEP – 01

MOUNT BRACKET ONTO SHELF UNIT



Install (2) 08308-1 to the shelf unit as shown below. Do not completely tighten to shelf for adjustment to get good location on header rail. The brackets can be moved to avoid obstacles.





Welded Shelf Unit Assembly/Install





STEP – 02

DRILLING VEHICLE FOR INSTALL OF UNIT TO INTO VEHICLE





FASTENERS NEEDED FOR HEADER RAIL

			
FAS0078 SCREW, HEX HEAD 1/4-20 X 1" TORQUE 12 ft. lbs.	FAS0060 WASHER, LOCK, SPLIT 1/4"	FAS0067 WASHER, FLAT 1/4"	FAS0052 1/4-20 PLUSNUT

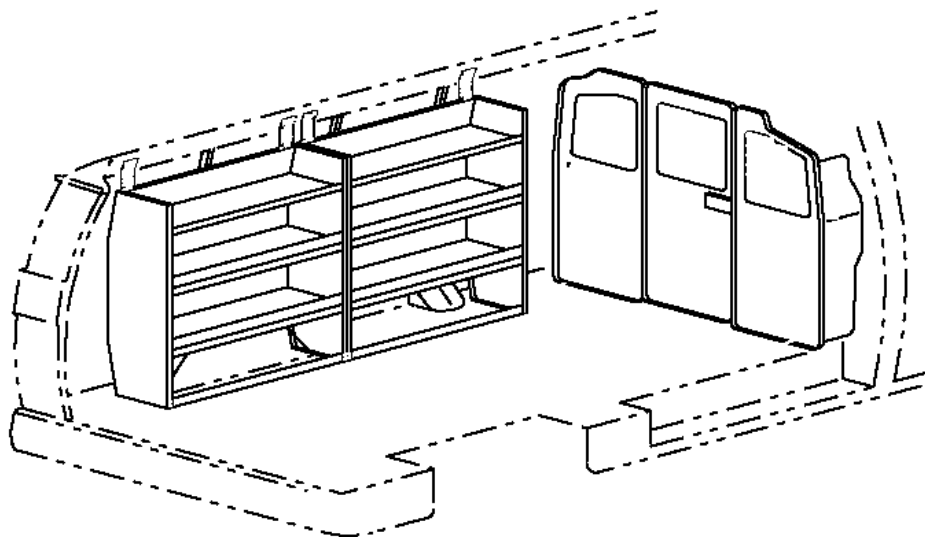
FASTENERS NEEDED FOR FLOOR

	
03927-1 11/32 C/F 1006 SPACER	03927-2 11/16 C/F 1006 SPACER

SPACERS ARE USED TO CREATE A LEVEL, AND SOLID INSTALLATION.
(REFER TO PAGE 3 FOR SPACER APPLICATION)

			
FAS0092 SCREW, HEX HEAD 5/16-18 X 1.5" TORQUE 12 ft. lbs.	FAS0098 WASHER, LOCK, SPLIT 5/16"	FAS0086 WASHER, FLAT 5/16"	FAS0091 5/16-18 PLUSNUT

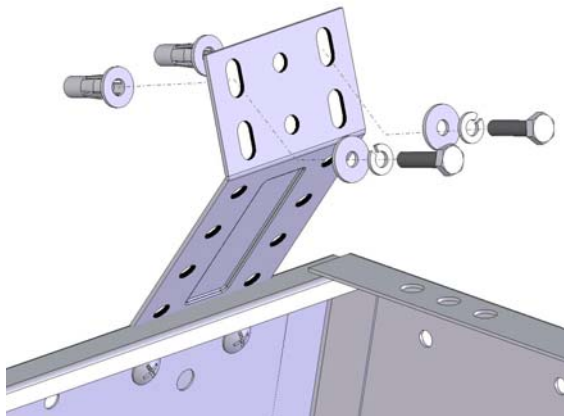
Position welded unit(s) in desired position. Be careful not to position header brackets over holes or other header rail obstacles. Mark all header and floor mounting positions. Remove welded units. Drill all marked mounting positions with correctly sized drill bit with stop. (Picture for reference only)



STEP – 02 cont

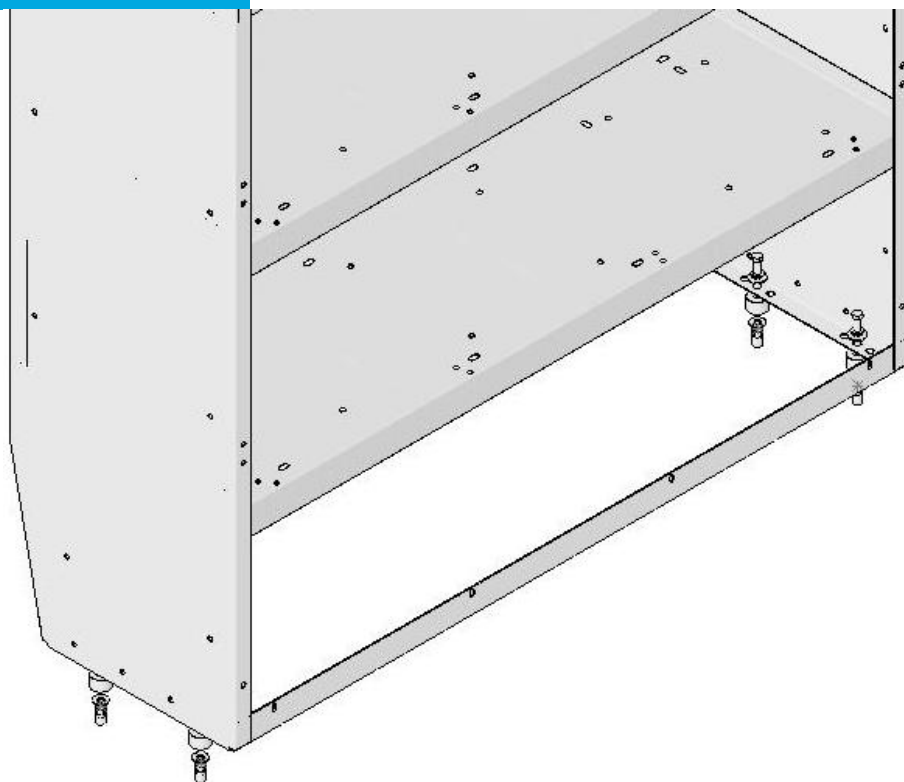
MOUNTING SHELF UNIT INTO VEHICLE

Install (2) bolts per header bracket as shown below. (Picture for reference only)



Install two (2) bolts per side as shown below. (Image below is for reference only). The location of various floor mounts will determine what spacer combination will be used. For example, an 11/32" spacer is used atop floor ribs, and an 11/16" high spacer is used in floor valleys.

Welded Shelf Unit Assembly/Install



STEP – 3

WHEN JOINING TWO SHELF UNITS TOGETHER FOLLOW THE INSTRUCTIONS BELOW. (Picture for reference only)

FASTENERS SHOWN BELOW ARE USED IN JOINING TWO SHELF UNITS TOGETHER.

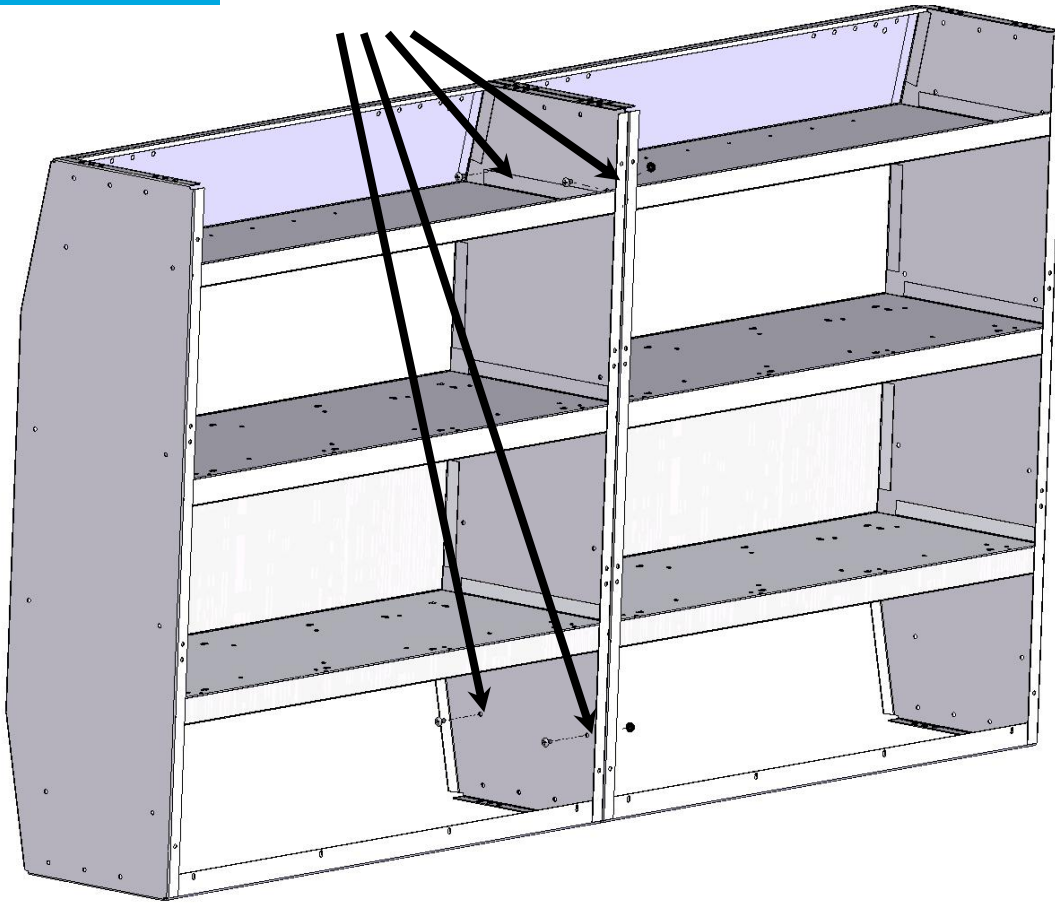


FAS0061
SCREW, THP 1/4-20X.50 P/G5
TORQUE 8 ft. lbs.
(4) REQ'D.



FAS0055
NUT, HEX FLANGE
1/4-20
(4) REQ'D

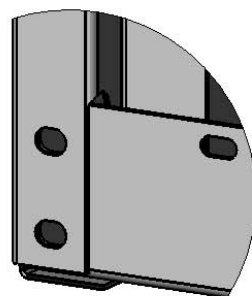
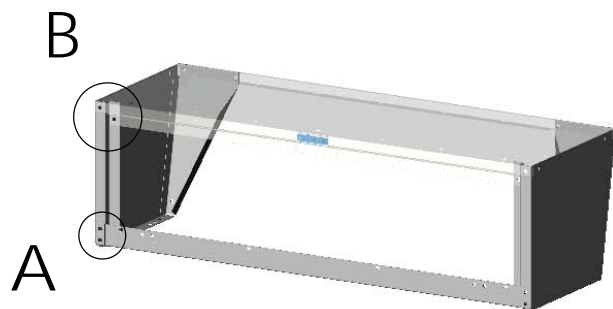
Welded Shelf Unit Assembly/Install



**DOUBLE-CHECK ALL FASTENER LOCATIONS TO BE
SURE THAT ALL FASTENERS ARE TIGHTENED TO
SPECIFICATIONS!**

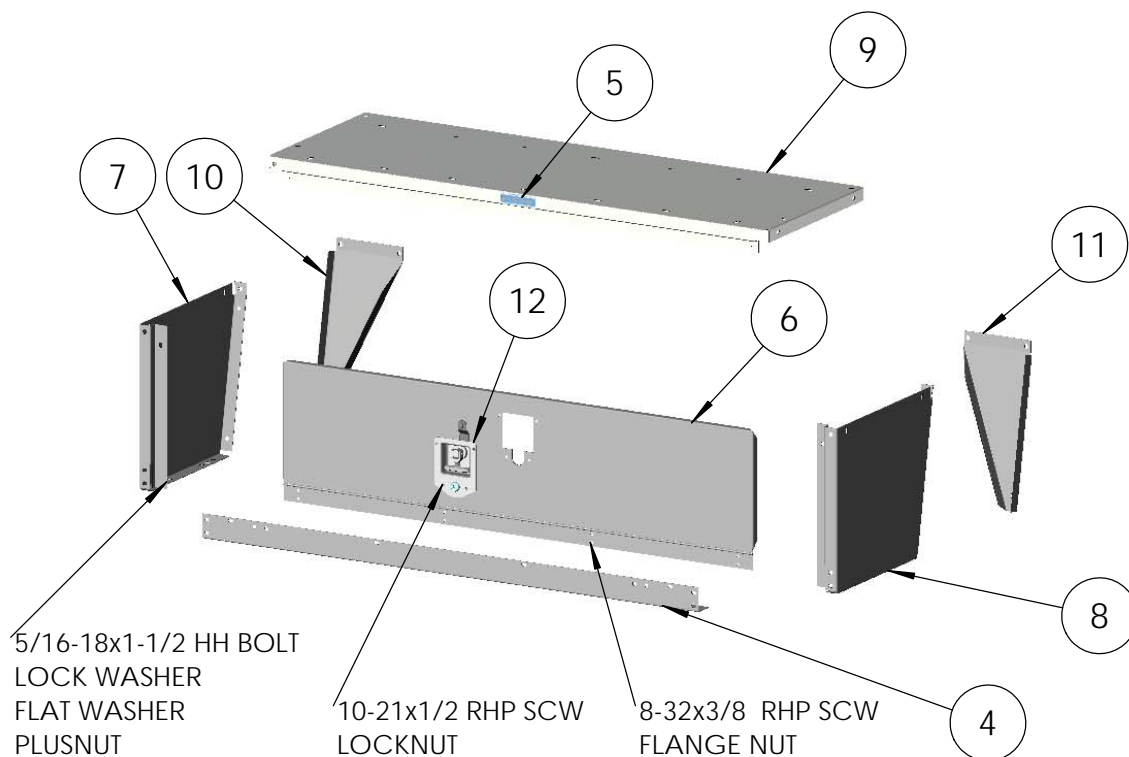


YOUR INSTALLATION IS NOW COMPLETE! STOW THIS COPY IN THE VEHICLE FOR FUTURE REFERENCE!



DETAIL A
SCALE 1 : 2

THE TOP PANEL COVERS ALL VERTICAL PIECES, & LEG BRACES. LEG BRACES ARE ASSEMBLED INSIDE THE END PANELS.

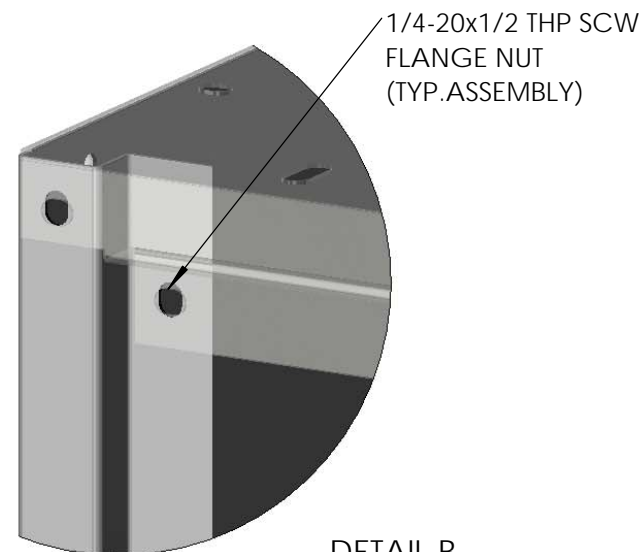


5/16-18x1-1/2 HH BOLT
LOCK WASHER
FLAT WASHER
PLUSNUT

10-21x1/2 RHP SCW
LOCKNUT

8-32x3/8 RHP SCW
FLANGE NUT

ITEM	PART #	DESCRIPTION	QTY
1	BAG00004-0	#4 BAG FOR #40 BIN/KD	1
2	CRT11946-A	CARTON, PAD FOR 11946	1
3	CRT11946-0	CARTON FOR #11946-0	1
4	FR42	FLOOR RAIL, 42"	1
5	LOGO-SM	0.875X3.00 ADRIAN LOGO	1
6	09311-0	DOOR ASM. 42" (39-5/8)	1
7	11947-0	END PANEL 14" LEFT	1
8	11948-0	END PANEL 14" RIGHT	1
9	11949-0	TOP PANEL 14X42	1
10	12072-0	LEG BRACE/,LEFT	1
11	12073-0	LEG BRACE/,RIGHT	1
12	21000-0	LOCKING T HNDL W/KEY ASCO	1



DETAIL B
SCALE 1 : 2

CAUTION: DRILL THRU FLOOR WITH CARE! WATCH FOR GAS TANK, CONTROL LINES, & ELECTRICAL WIRING.



906 James Street
Adrian, Michigan 49221
517.265.6194
WWW.ADRIANSTEEL.COM

ALL DESIGNS AND DESIGN CONCEPTS ARE THE INTELLECTUAL PROPERTY OF ADRIAN STEEL COMPANY AND ARE NOT TO BE COPIED, DISTRIBUTED OR COMMUNICATED TO OUTSIDE PARTIES WITHOUT THE WRITTEN PERMISSION OF ADRIAN STEEL COMPANY.
THE MATERIAL/CONCEPTS/DESIGNS CONTAINED WITHIN THIS DOCUMENT ARE FOR THE PURPOSE OF SUPPLYING PRODUCT TO POTENTIAL ADRIAN STEEL COMPANY CUSTOMERS.

Drawn By: **BDS**
Date: **03/09/2015**
ECN No: **12861**
PART No: **40**

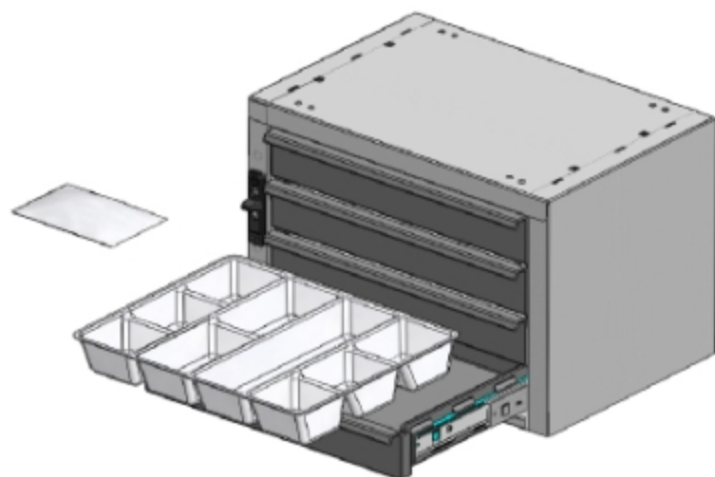
DESCRIPTION
WHEELHOUSE BIN - KD
14 X 12.5 X 42

Part Weight: 27.58	CG Horizontal & Vertical: HCG= 21.00 VCG= 6.25	Sheet: 1 of 1	Rev.: E
------------------------------	---	-------------------------	-------------------

**ADRIAN STEEL**

Cargo Management Solutions for Commercial Vehicles

9, 4-DRAWER SHALLOW

*PRODUCT WEIGHT***27.7 lbs.***WIDTH x DEPTH x HEIGHT***18 x 12 x 12***CAPACITY***15 LBS. PER DRAWER***COLOR***GRAY***CATALOG NUMBER***9***PRODUCT FEATURES*

The drawer unit body is a sturdy welded and painted steel housing. The housing has ¼-20 riv-nuts installed into the base of the unit for easy installation. Also included are pre-drilled mounting holes in the top of the cabinet to allow for quick and easy stacking of the units. The number 9 drawer unit includes four (4) polymer drawers that ride on full extension ball bearing glides. The drawers have an inside dimension of 13.50" wide X 2.0" tall X 11.50" deep. The drawers include a removable divider tray for storing smaller parts. Each cabinet includes a sliding latch/lock system designed to secure the drawers during vehicle movement. A cam lock allows for securing your inventory for more security.

PRODUCT APPLICATION

This product is designed to be used in and/or on ADRIAN STEEL shelving units and can also be used as a standalone product. The product is great for small parts and supplies storage.

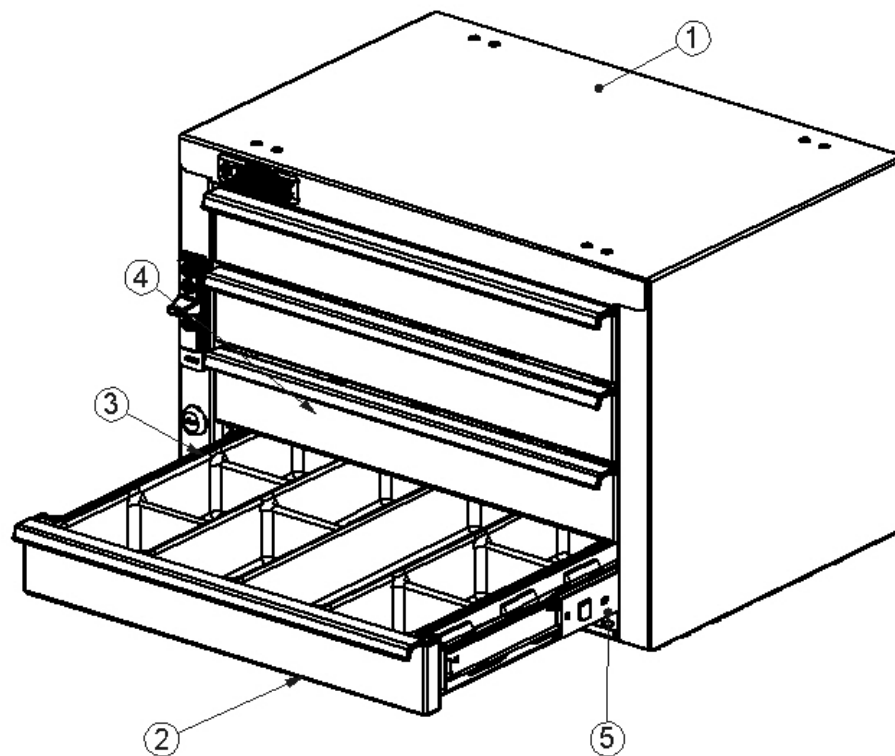
Introduction / Comments:

The drawer unit body is a sturdy welded and painted steel housing. 4 polymer drawers ride on ball bearing glides. The drawer include a removable divider tray for storing small items. Each cabinet includes a sliding latch/lock system designed to secure the drawers during vehicle movement.

Note:

It is advised that all fasteners used in this assembly and installation should be checked for tightness at the following intervals: @ 2-weeks and again @ 6-weeks of operation. This preventive maintenance step must be completed to ensure your Product gives you long service life.

ITEM NO.	PART NUMBER	DESCRIPTION	9/QTY.
1	39197-G	WRAPPER BODY ASSM	1
2	40015	DRAWER SUB ASSY. #9/919	4
3	26105-0	Divider Tray 9/919	4
4	40827-LH	250MM SLIDE, CABINET HALF, LH	4
5	40287-RH	250MM SLIDE, CABINET HALF, RH	4
6	BAG00001-0	FASTENER BAG 9,19,919	1



9 4 DRAWER UNIT

- PRECAUTIONS -





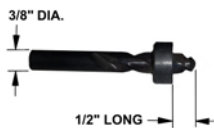
 **CAUTION** 
**THE USE OF AIR IMPACT TOOLS CAN
OVER-TORQUE FASTENERS AND
CAUSE FASTENER FAILURE!**





 **CAUTION** 
**ALL INSTALLATION HOLES SHOULD BE SEALED
WITH SILICON OR BUTYL SEALANT TO PREVENT
EXHAUST FUMES FROM ENTERING THE VEHICLE!**



 **DANGER** 
**INSPECT FOR FUEL TANK, FUEL LINES, BRAKE LINES, HIGH
VOLTAGE BATTERIES AND ELECTRICAL LINES PRIOR TO
DRILLING TO AVOID DAMAGING CRITICAL VEHICLE SYSTEMS
OR INJURY TO INSTALLER DURING INSTALLATION PROCESS!**



 **CAUTION** 
**TO AVOID DAMAGING THE VEHICLE ALWAYS USE DRILL
STOPS WHEN DRILLING ANY INSTALLATION HOLES!
ADRIAN AVAILABLE PART #'S 31119-0 (3/8" X 1/2"
DEEP), 31121-0 (1/2" x 1/2" DEEP)**



- IMPORTANT WARRANTY REQUIREMENTS -

1. SUBSTITUTING ADRIAN STEEL SPECIFIED FASTENERS FOR ASSEMBLY AND/OR INSTALLATION WILL VOID YOUR PRODUCT WARRANTY.
2. ALL HOLES DRILLED INTO VEHICLE SHOULD HAVE THE RAW METAL EDGES SEALED WITH A SELF-ETCHING PRIMER TO RESIST CORROSION AND POTENTIAL FASTENER POINT FAILURE.
3. ALL FASTENERS USED IN THE INSTALLATION OF THIS PRODUCT SHOULD BE TIGHTENED TO THE TORQUE(S) SPECIFIED IN THESE INSTRUCTIONS.
4. THESE INSTRUCTIONS SHOULD BE KEPT WITH THE VEHICLE.

THE BASIC TOOLS NEEDED FOR MOST INSTALLATIONS



DRILL



DRILL BIT WITH
STOP



RATCHET, SOCKETS
AND/OR WRENCHES



SCREWDRIVERS



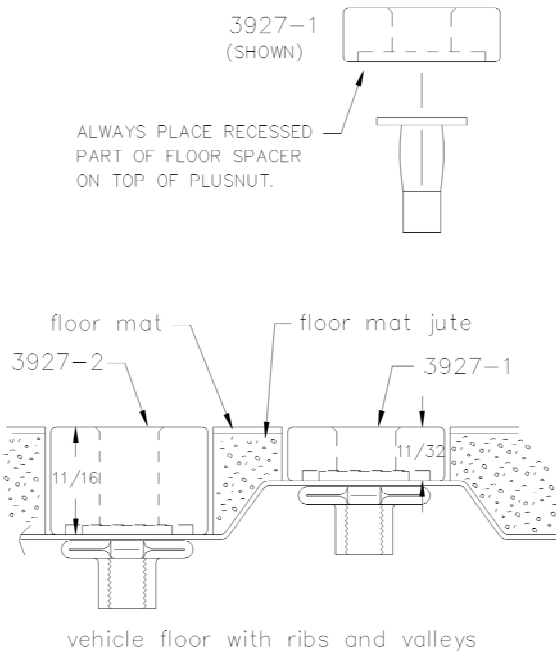
MEASURING TAPE

ADDITIONAL TOOLS MAY BE NEEDED FOR THIS INSTALLATION AND THEY WILL BE IDENTIFIED IN THE STEPS THAT FOLLOW.

If your vehicle contains carpet or a rubber floor mat you will need to prepare the mounting location. Position the product to be installed into the vehicle and once you are satisfied with the mounting locations, mark the mounting locations. Using a 1-3/16" diameter carpet cutter (P/N: 31183-0). Select the appropriate floor spacers as shown in the illustration. Set those aside for use later into the installation process. Using the correct drill bit size for the selected plusnut, drill the mounting holes in the vehicle sheet metal to prepare for installing the plusnuts.

If you are thru-bolting at any of the locations simply drill a hole that is 1/16" larger than the bolt size(s) for those locations.

Once you have drilled the holes into the vehicle, the raw metal edges should be sealed using a self-etching primer to resist corrosion and potential fastener point failure.



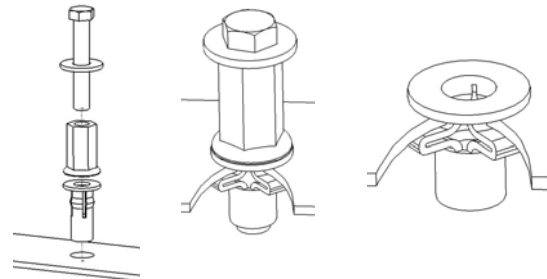
A PLUSNUT (RIVNUT) SETTING TOOL IS REQUIRED FOR PLUSNUT (RIVNUT) INSTALLATION . PLUS NUT SETTING TOOL CAN BE ORDERED THROUGH ADRIAN STEEL, OR USE AN AIR POWERED PLUSNUT SETTING GUN.

1/4-20UNC Plusnut (FAS0052) Use 3/8" dia. drill w/stop

FAS0080 SCREW, HXHD, 1/4-20UNCx2.00", G8
FAS0067 WASHER, FLAT, 1/4"ID
22200-0 PLUSNUT TOOL

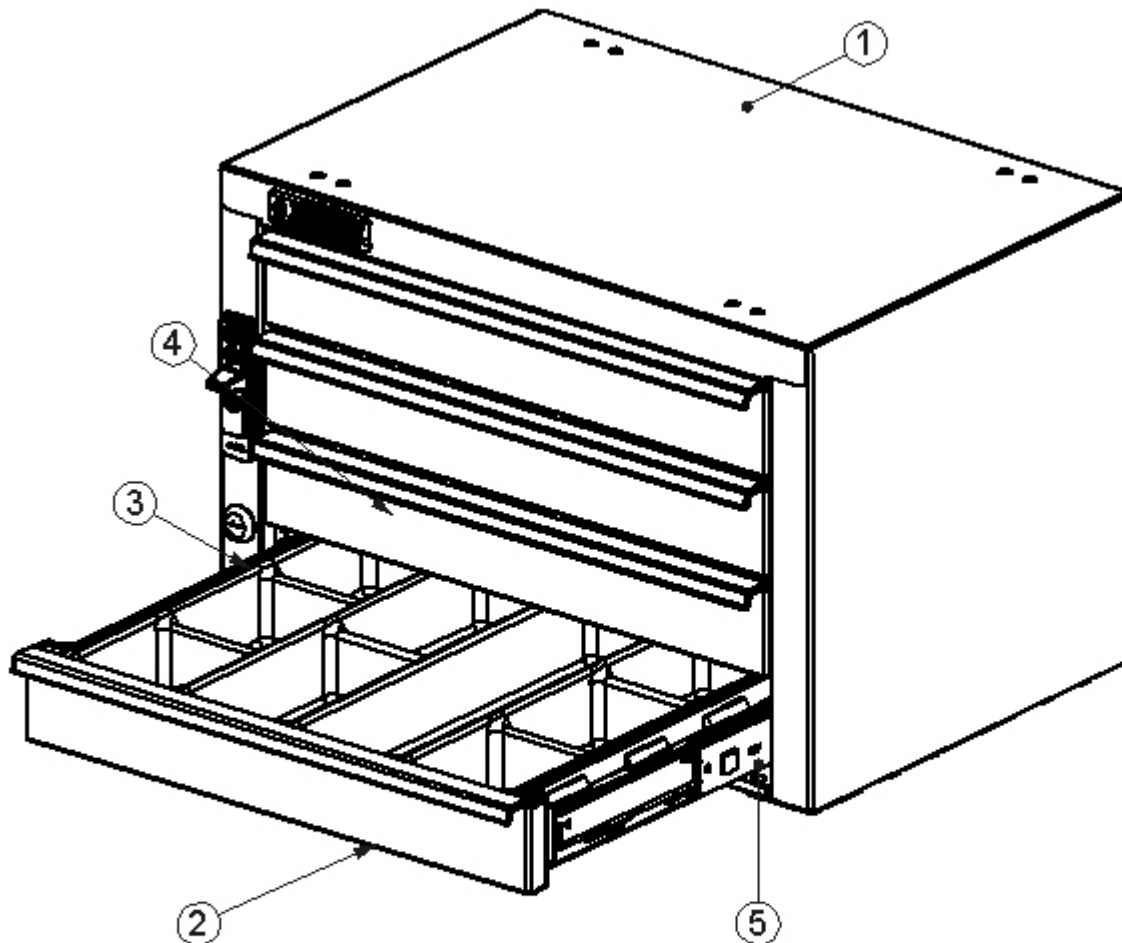
5/16-18UNC Plusnut (FAS0091) Use 1/2" dia. drill w/stop

FAS0095 SCREW, HXHD, 5/16-18UNCx2.00", G8
FAS0086 WASHER, FLAT, 5/16"ID
22200-0 PLUSNUT TOOL



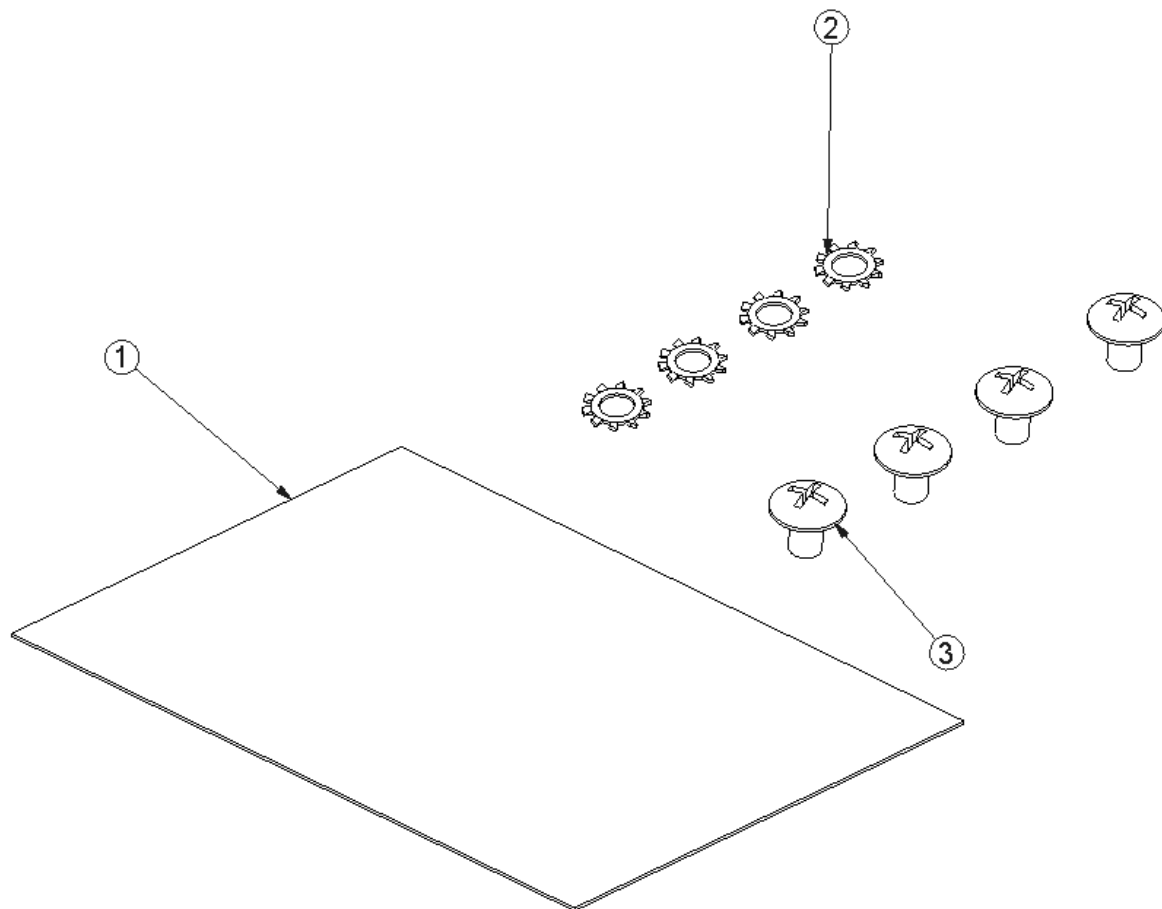
Place barrel of the plusnut body in sheet metal thru hole until flange is flush with sheet metal.

Using a 9/16" combination wrench of plusnut tool body and a second hand wrench, ratchet, or air tool, rotate the hex bolt head CW to draw plus nut flanges up (set the plusnut).

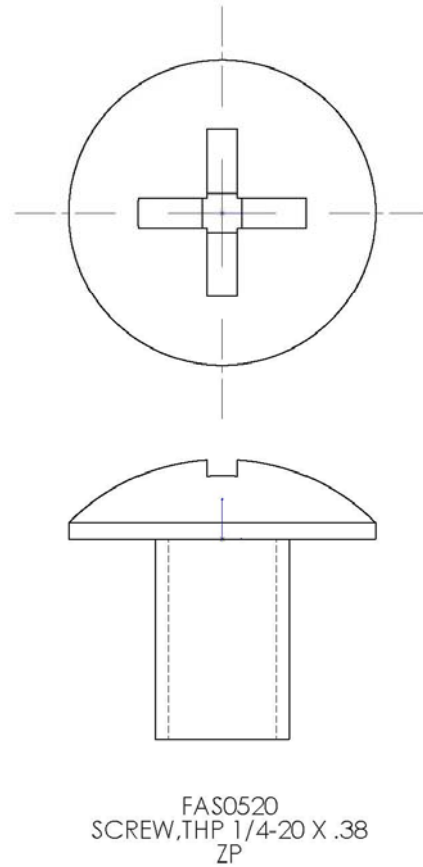
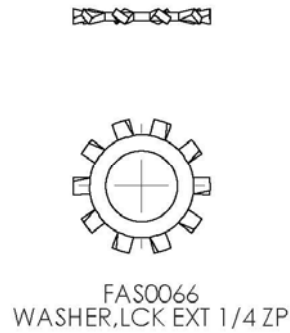


INSERT FOUR (4) 40287-LH AND FOUR (4) 40287-RH SLIDES INTO CABINET BODY. INSERT FOUR(4) 40015 DRAWERS INTO CABINET BODY. INSERT A TOTAL OF FOUR (4) 26105-0 DIVIDER TRAYS INTO UNIT. INSERT ONE (1) DIVIDER TRAY UPSIDE DOWN INTO TOP DRAWER AND RIGHT SIDE UP INTO THE REMAINING THREE (3) DRAWERS. PLACE BAG00001-0 INTO THE SECOND DRAWER TRAY. TAPE THE LOCK KEYS INTO THE FRONT RIGHT HAND TRAY POCKET AND CLOSE THE DRAWERS.

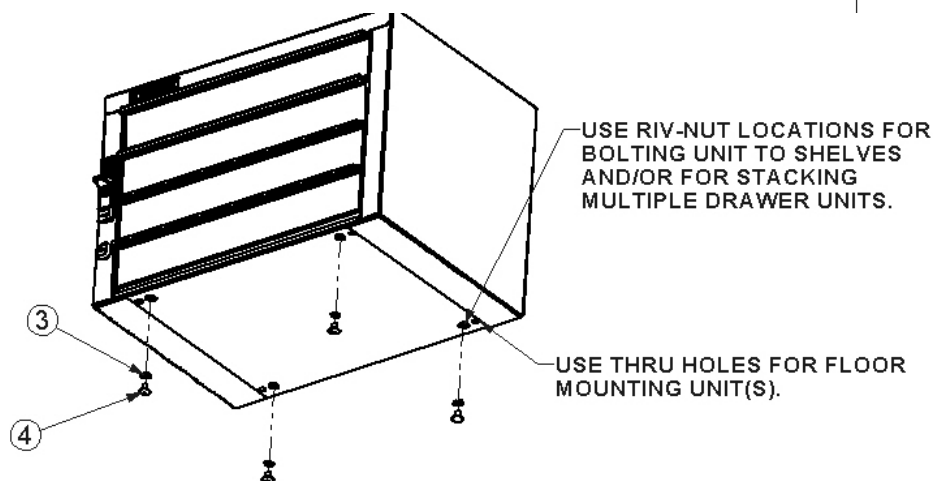
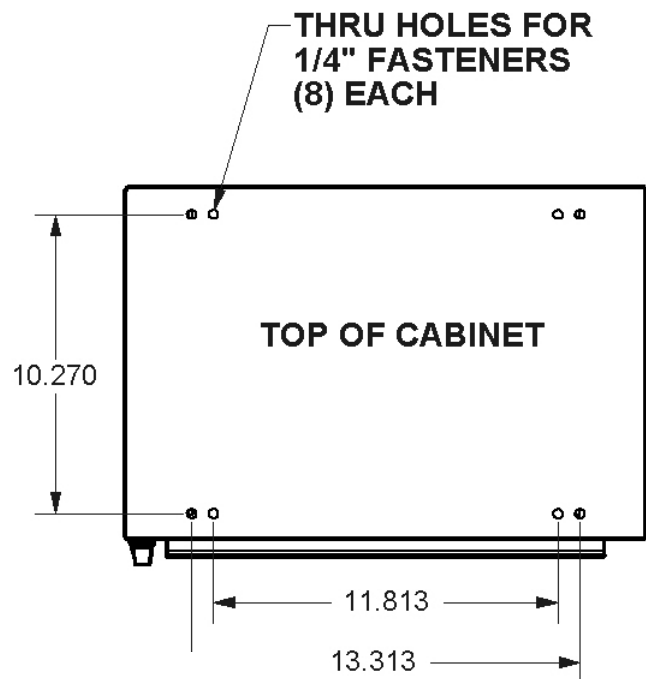
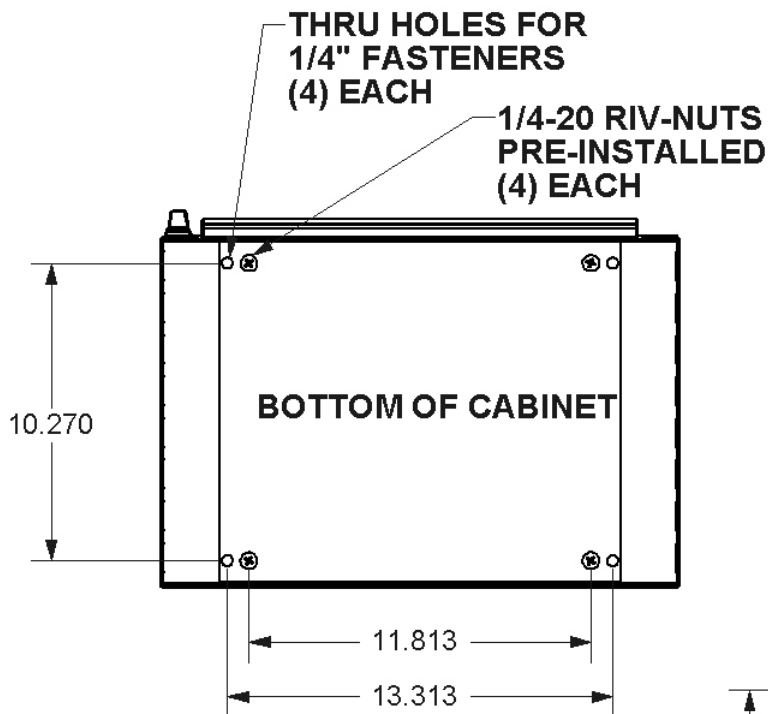
ITEM NO.	PART NUMBER	DESCRIPTION	BAG00001-0/QTY.
1	BAG0505-A	5" x 5" 3MIL AUTOBAG	1
2	FAS 0066	Washer, Lock, Ext. Tooth, 1/4	4
3	FAS0520	Screw, Truss Hd. Ph, 1/4-20x .375" lg	4

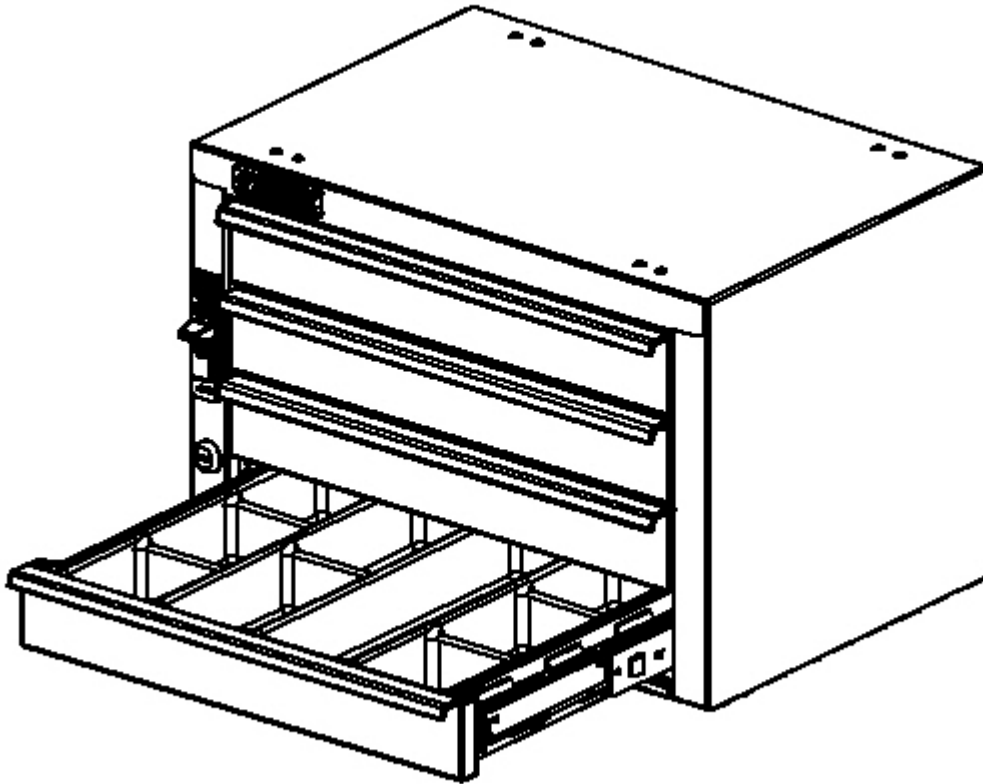


Individual Fastener Images & Descriptions



Step 01 Methods of Attachment





**DOUBLE CHECK ALL FASTENERS LOCATIONS TO BE SURE THAT ALL
FASTENERS ARE TIGHTENED TO SPECIFICATIONS.
YOUR INSTALLATION IS NOW COMPLETE!
STOW THIS COPY IN THE VEHICLE FOR FUTURE REFERENCES!**