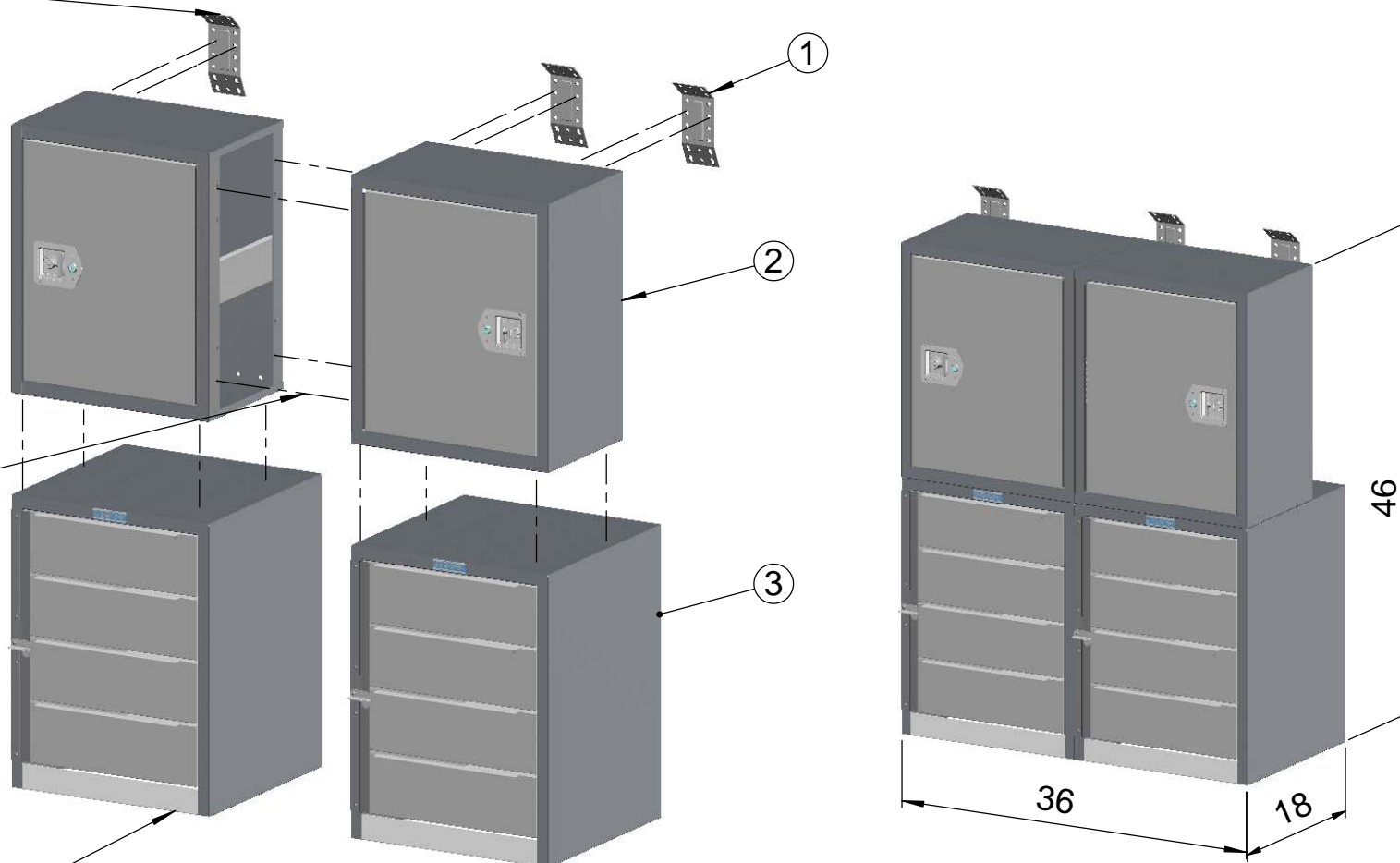


1/4-20x1 HH SCREW
LOCK WASHER
FLAT WASHER
PLUSNUT

1/4-20x1/2 THP SCW
FLANGE NUT
(TYP.ASSEMBLY)

5/16-18x1-1/2 HH BOLT
LOCK WASHER
FLAT WASHER
PLUSNUT

ITEM	PART #	DESCRIPTION	QTY
1	MB111	BRKT, MTG, W/FAS	3
2	12	CABINET,#12, 12X22X18	2
3	2	4-DRAWER MEDIUM	2



PRINTED DOCUMENT IS UNCONTROLLED



ADRIAN STEEL®

VAN AND PICKUP EQUIPMENT
CARGO MANAGEMENT SOLUTIONS FOR COMMERCIAL VEHICLES
906 James St., Adrian, Michigan 49221
517.265.6194
www.adriansteel.com

Customer:

**DRAWER/CABINET
MODULE
18 X 46 X 36**

Drawn By:

BDS

Date:

03/06/2015

ECN No:

6071

PART No:

MD505

Part Weight:

141.23

CG Horizontal & Vertical:

HCG=**18.00** VCG=**23.00**

Sheet:

1 of 1

Rev.:

A

CAUTION:
DRILL THRU FLOOR WITH CARE!
WATCH FOR GAS TANK, CONTROL
LINES, & ELECTRICAL WIRING.

APPLICATION OF UNIVERSAL MOUNTING BRACKET #8308-0

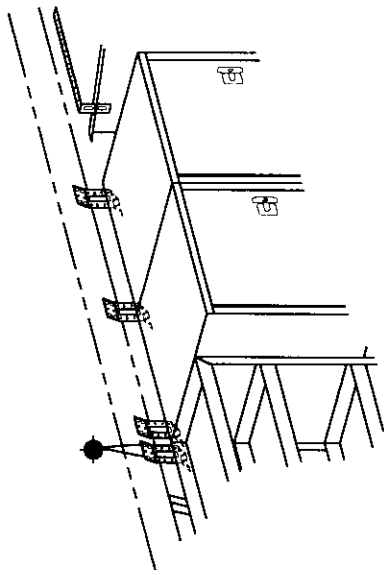


FIG. 1

CABINETS BELOW THE HEADER RAIL WILL NEED THE UNIVERSAL MOUNTING BRACKET AT EACH END OF ADJOINING CABINETS, AS SHOWN IN FIG'S 1, 2, & 3.

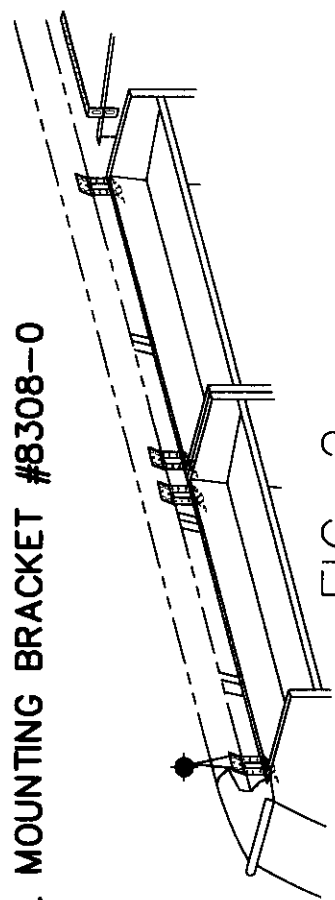


FIG. 2

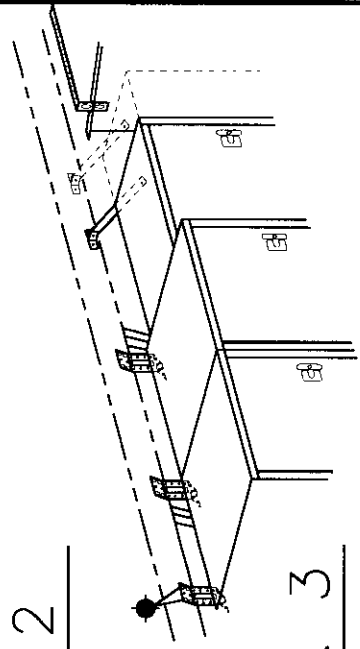


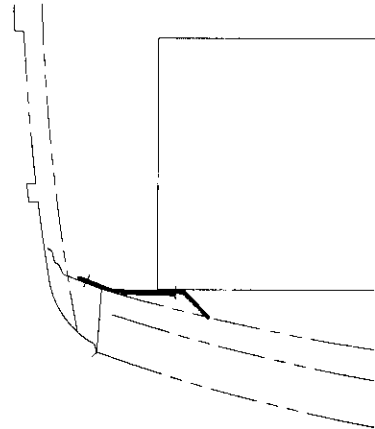
FIG. 3

OBSTRUCTIONS ON THE HEADER RAIL SUCH AS THE SHOULDER BELT ANCHOR, MAY REQUIRE A DIFFERENT TYPE OF MOUNTING BRACKET TO POSITION THE CABINETS OUT & AWAY FROM THE HEADER RAIL AS SHOWN IN FIG. 3.

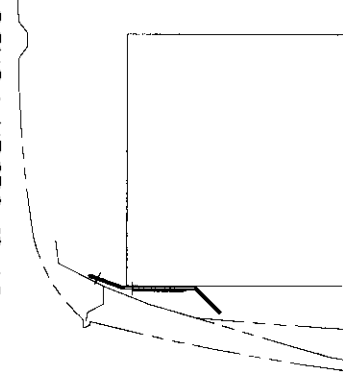
FIG. 4

TYPICAL POSITIONING OF MOUNTING BRACKET FOR EACH STYLE HEADER RAIL.

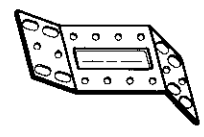
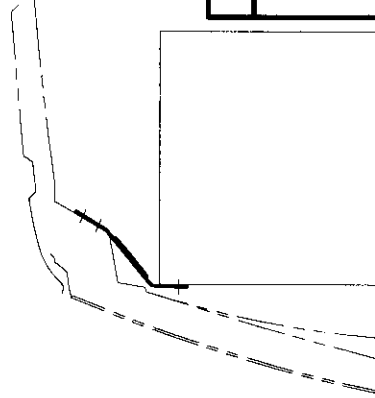
1996 & OLDER
CHV/GMC



DODGE
91 & OLDER FORDS



1997 CHV/GMC
1992 & NEWER FORD



NEW STYLE 1995

#8308-0 UNIVERSAL MOUNTING BRACKET
(REVISED MAY OF 1995)

EN- 4758

DATE: MAY/3/99



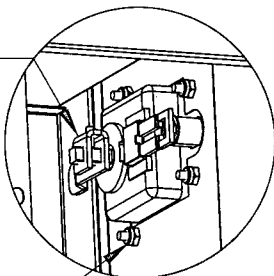
ADRIAN STEEL COMPANY

906 JAMES STREET ADRIAN, MI 49221

cabinets designed to serve

ITEM NO.	PART NUMBER	DESCRIPTION	12/QTY.
1	10068-0	CABINET SUB-ASM, #12, (3862)	1
2	21000-0	Folding T-Handle	1
3	BAG0002-0	#2 BAG FOR #12, 38, 43, 51, CBS #7	1
4	CRT03862-0	CARTON #12 / SPECIAL PKG	1
5	CRT03862-A	CARTON, PAD FOR #12	1
6	12B	SHELF PANEL (#12 CABINET)	1

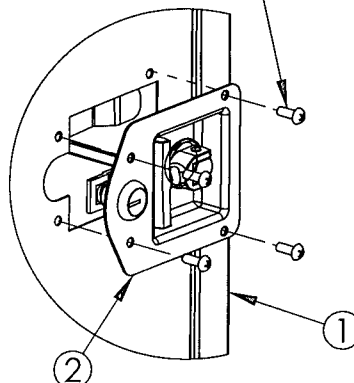
LATCH PAWL, ADJUST POSITION
AS REQ'D
SECURE w/SETSCREWW, #8-32x1/2"



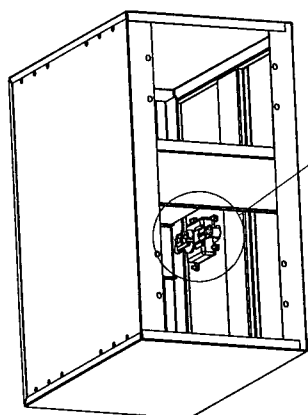
FAS0029
NUT, NYLON LOCK, #10-24UNC
QTY = 4

DETAIL B
SCALE 1 : 4

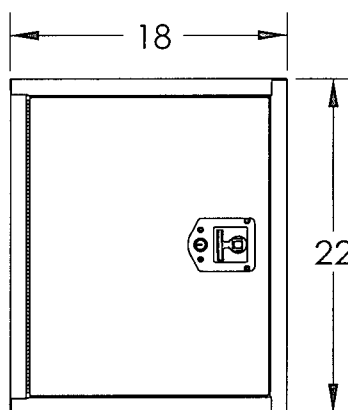
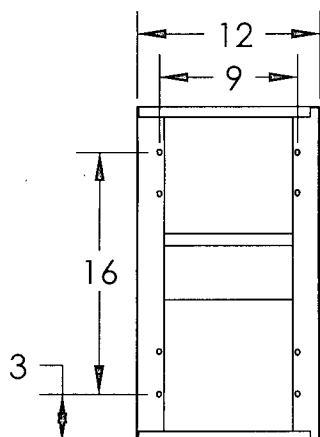
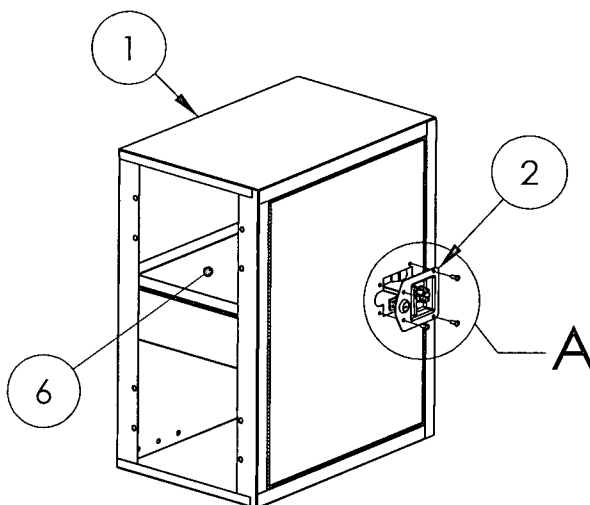
FAS0021
SCREW, RHP, #10-24UNC X 1/2"
QTY = 4



DETAIL A
SCALE 1 : 4



B



PRINTED DOCUMENT IS UNCONTROLLED

Sheet 1 of 1

THIS PRODUCT IS SUBJECT TO CHANGE.
ADRIAN STEEL COMPANY RESERVES THE RIGHT TO
CHANGE THE PRODUCT OF IT'S DESIGN WITHOUT
PRIOR NOTICE.

THIS DRAWING IS THE PROPERTY OF ADRIAN STEEL COMPANY
AND IS NOT TO BE USED IN ANY MANNER DETRIMENTAL TO
THE INTERESTS OF ADRIAN STEEL COMPANY.

Shipping Wt. (Lbs.):

21.257

Coating/Finish:

GrayPwddct

Do Not Scale This Drawing!

ADRIAN STEEL
VAN AND PICKUP EQUIPMENT

906 James St.
Adrian, MI 49221
517.265.6194

Part Description: **CABINET 12 X 22 X 18**

Part Number: **12**

REVISION
LEVEL:

C

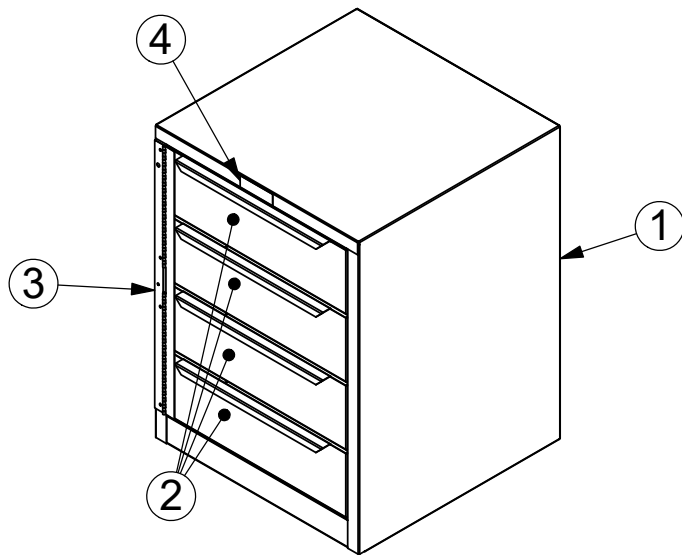
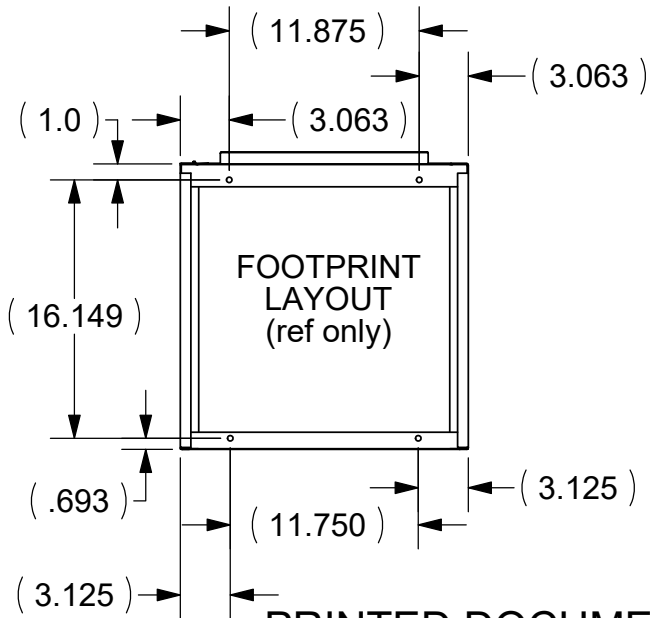
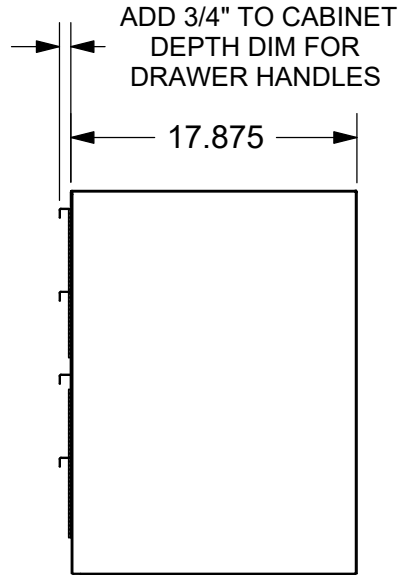
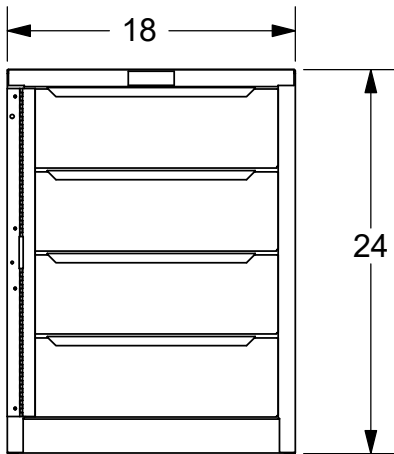
FOR REFERENCE ONLY!

Part
Number: **12**

REVISION
LEVEL: **C**

ITEM NO.	PART NUMBER	DESCRIPTION	2/QTY.
1	03835-0	WLDMNT, #2 CABINET (16639)	1
2	16537-0	DRAWER, #2, 1PC, 5x18x16	4
3	09234-0	HINGE, LOCK, #2 CABINET	1
4	LOGO-SM	LOGO, ASCO, .875X2.875	1

**EACH DRAWER IS RATED
FOR A MAX OF 20 LBS.**



CHECK ALIGNMENT AND
SMOOTHNESS OF DRAWER
OPERATION, CORRECT AS REQ'D

PRINTED DOCUMENT IS UNCONTROLLED

Sheet 1 of 1

THIS PRODUCT IS SUBJECT TO CHANGE.
ADRIAN STEEL COMPANY RESERVES THE RIGHT TO
CHANGE THE PRODUCT OF IT'S DESIGN WITHOUT
PRIOR NOTICE.

THIS DRAWING IS THE PROPERTY OF ADRIAN STEEL COMPANY
AND IS NOT TO BE USED IN ANY MANNER DETRIMENTAL TO
THE INTERESTS OF ADRIAN STEEL COMPANY.

Shipping Wt. (Lbs.):

62

Coating/Finish:

GrayPwddct

Do Not Scale This Drawing!



906 James St.
Adrian, MI 49221
517.265.6194

Part Description: **4-DRAWER MEDIUM**

Part Number: **2**

REVISION
LEVEL:

D

for reference only!

Part
Number: **2**

REVISION
LEVEL: **D**