

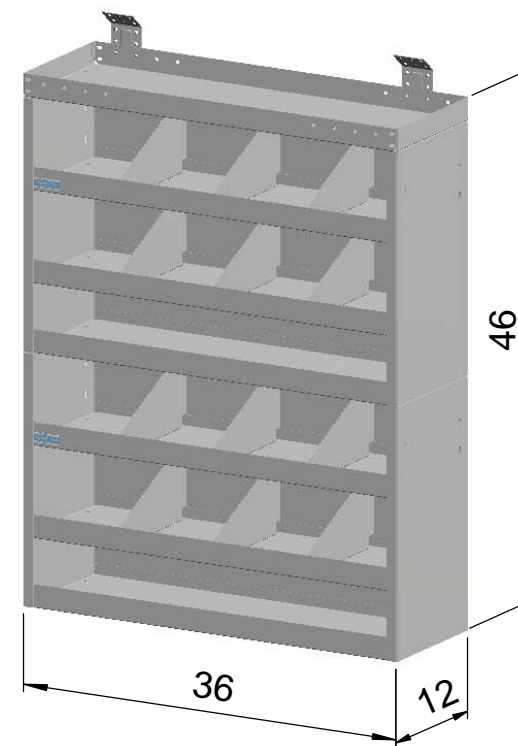
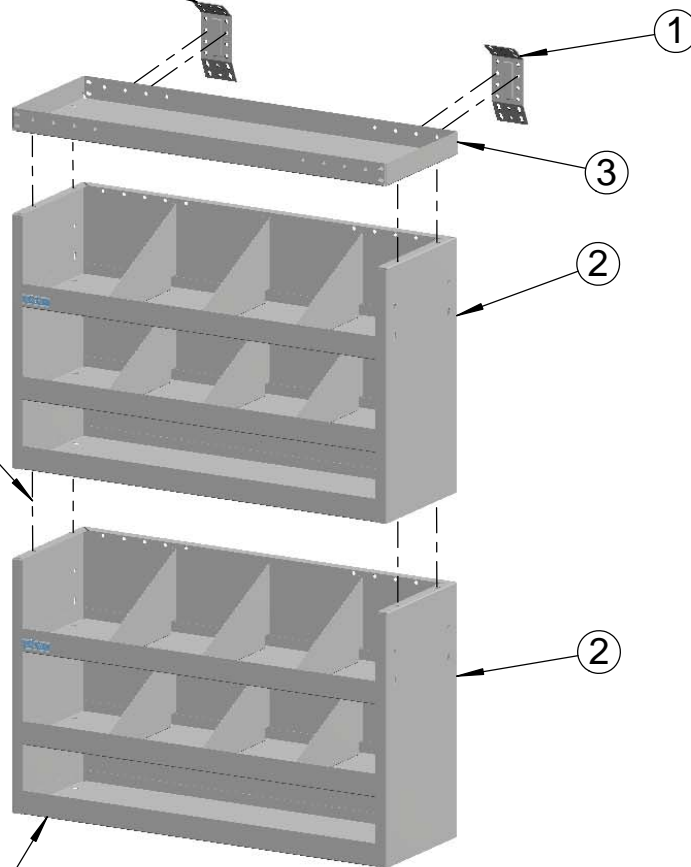
1/4-20x1 HH SCREW
LOCK WASHER
FLAT WASHER
PLUSNUT

**REMOVE SHIPOPING BRACE FROM THE
#18 CABINETS BEFORE ATTACHING
THEM TO THE MODULE**

| ITEM | PART # | DESCRIPTION | QTY |
|------|--------|----------------------|-----|
| 1 | MB111 | BRKT, MTG, W/FAS | 2 |
| 2 | 18 | SHELF RACK / WELDED | 2 |
| 3 | 4A | PARTS TRAY (2X12X36) | 1 |

1/4-20x1/2 THP SCW
FLANGE NUT
(TYP.ASSEMBLY)

5/16-18x1-1/2 HH BOLT
LOCK WASHER
FLAT WASHER
PLUSNUT



PRINTED DOCUMENT IS UNCONTROLLED



ADRIAN STEEL®

VAN AND PICKUP EQUIPMENT
CARGO MANAGEMENT SOLUTIONS FOR COMMERCIAL VEHICLES
906 James St., Adrian, Michigan 49221
517.265.6194
www.adriansteel.com

Customer:

RACK MODULE

12 X 46 X 36

Drawn By:

BDS

Date:

03/06/2015

ECN No:

6071

PART No:

MD504

Part Weight:

94.36

CG Horizontal & Vertical:

HCG= **18.00** VCG= **23.00**

Sheet:

1 of 1

Rev.:

A

CAUTION:
DRILL THRU FLOOR WITH CARE!
WATCH FOR GAS TANK, CONTROL
LINES, & ELECTRICAL WIRING.

APPLICATION OF UNIVERSAL MOUNTING BRACKET #8308-0

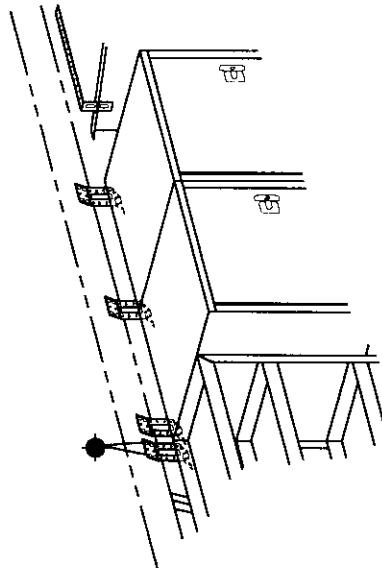


FIG. 1

CABINETS BELOW THE HEADER RAIL WILL NEED THE UNIVERSAL MOUNTING BRACKET AT EACH END OF ADJOINING CABINETS, AS SHOWN IN FIG'S 1, 2, & 3.

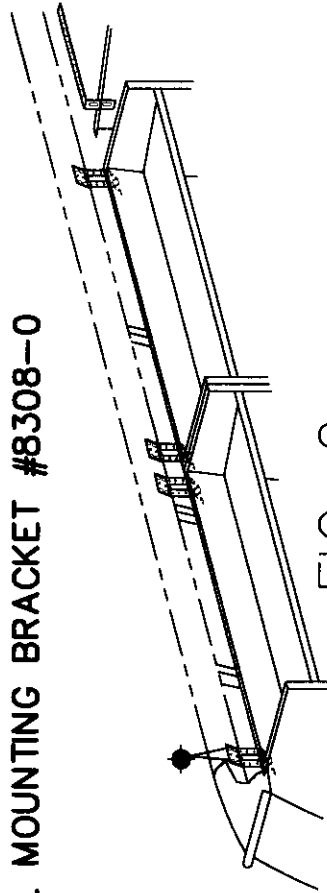


FIG. 2

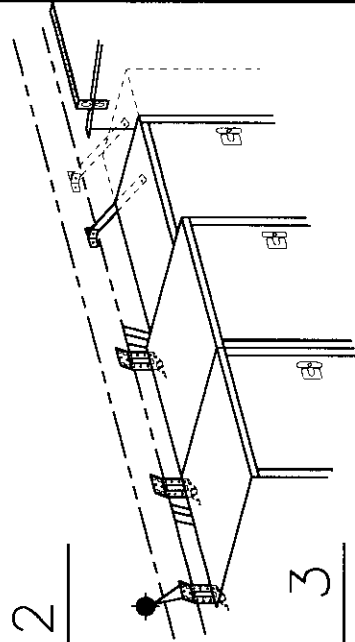


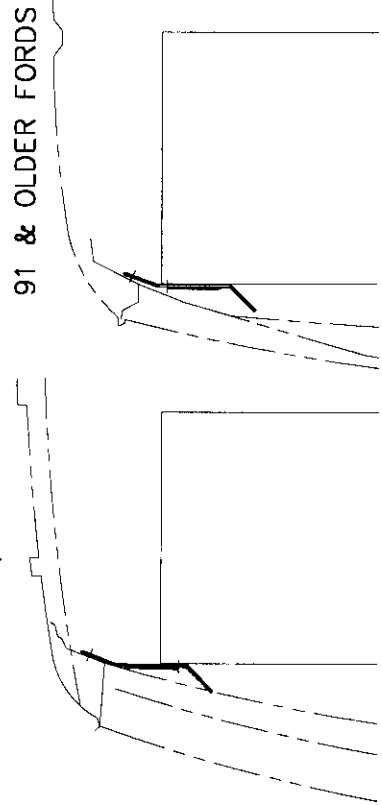
FIG. 3

OBSTRUCTIONS ON THE HEADER RAIL SUCH AS THE SHOULDER BELT ANCHOR, MAY REQUIRE A DIFFERENT TYPE OF MOUNTING BRACKET TO POSITION THE CABINETS OUT & AWAY FROM THE HEADER RAIL AS SHOWN IN FIG. 3.

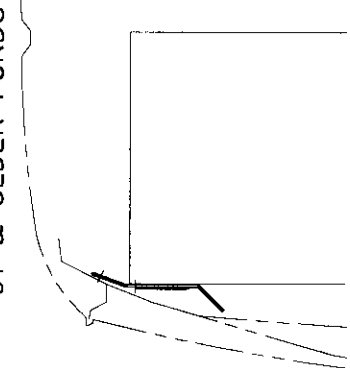
FIG. 4

TYPICAL POSITIONING OF MOUNTING BRACKET FOR EACH STYLE HEADER RAIL.

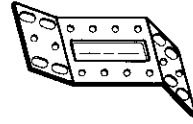
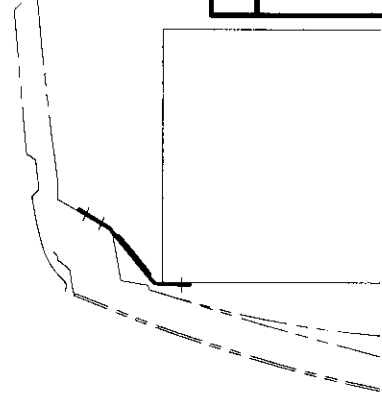
1996 & OLDER
CHV/GMC



DODGE
91 & OLDER FORDS



1997 CHV/GMC
1992 & NEWER FORD



NEW STYLE 1995

#8308-0 UNIVERSAL MOUNTING BRACKET
(REVISED MAY OF 1995)

EN- 4758

DATE: MAY/3/99



ADRIAN STEEL COMPANY

906 JAMES STREET ADRIAN, MI 49221
cabinets designed to serve

PURCHASED COMPONENT KEY FEATURES

DESCRIPTION OF REQUIREMENTS

DIMENSIONAL REQUIREMENTS (AS SHOWN ON DRAWING)

LOAD/RATING REQUIREMENT

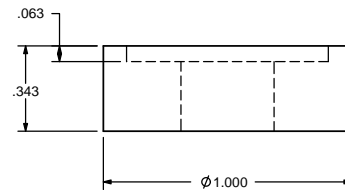
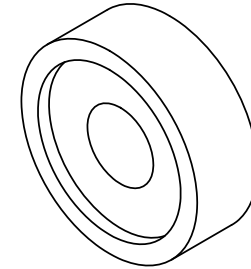
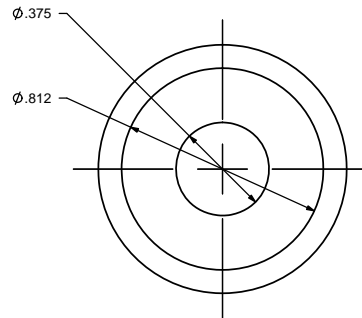
MATERIAL REQUIREMENT

1010 STEEL

PACKAGING REQUIREMENT

OTHER REQUIREMENTS

FINISH: ZINC COATED



**CHAMFER ON CORNERS
ACCEPTED BUT NOT
REQUIRED**

THIS DRAWING IS THE PROPERTY OF ADRIAN STEEL COMPANY AND IS NOT TO BE USED IN ANY MANNER
DETRIMENTAL TO THE INTERESTS OF ADRIAN STEEL COMPANY

TOLERANCES & INSPECTION

UNLESS OTHERWISE SPECIFIED

ALL BEND ANGLES ARE 90 DEGREES

ALL DIMENSIONS ARE IN INCHES.

REFERENCE DIMENSIONS (X.XXX)

DO NOT REQUIRE INSPECTION

| FEATURES | HOLES/SLOTS | ANGLES |
|----------------|----------------|-------------|
| 0.0 = ± .125 | 0.0 = ± .062 | 0° = ± 2° |
| 0.00 = ± .062 | 0.00 = ± .031 | 0.0° = ± 1° |
| 0.000 = ± .031 | 0.000 = ± .015 | |

Material Thickness: per ASTM Std.
Weld Callouts per AWS

RELEASE & REVISIONS

INITIAL ECN: **3808**

CURRENT ECN: **22408**

ECN DESCRIPTION:

UPDATE THE MATERIAL USED

REVISED BY: **BCB**

PURCHASED COMPONENT

REFERENCED SUPPLIER AND/OR MANUFACTURER

MID-STATE BOLT & NUT CO INC

REFERENCED SUPPLIER AND/OR MANUFACTURER PART NUMBER

COLOR (ONLY LIST IF COLOR SPECIFIC)

COMODITY ITEM (Y/N) (YES = ALL DIMENSIONS AND NOTES ARE REFERENCE)
(NOTE: DIMENSIONS AND FEATURES MAY VARY FOR A COMODITY ITEM.)

YES

PRINTED DOCUMENT IS UNCONTROLLED

Sheet 1 of 1

PART / PRODUCT IDENTIFICATION



ADRIAN STEEL®

ADRIAN STEEL COMPANY
906 JAMES STREET, ADRIAN, MI 49221

REVISION LEVEL

E

MAT'L USED:

1010

DESIGNED BY: **JLC**

DESCRIPTION:

FLOOR SPACER SHORT

WEIGHT
(Lbs.):

0.0550

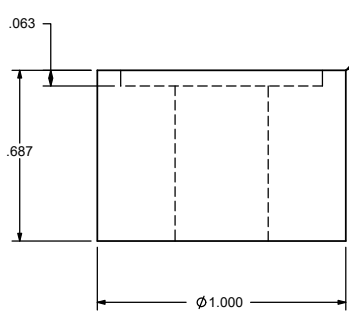
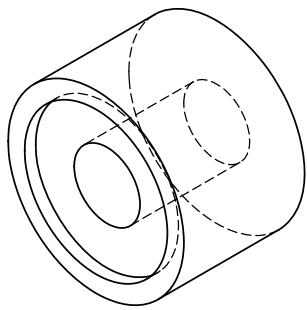
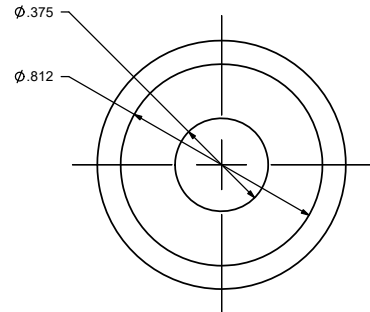
SEGMENT
CODE:

FAS

PART NUMBER: **03927-1**

**PURCHASED
COMPONENT
KEY FEATURES**

| DESCRIPTION OF REQUIREMENTS |
|--|
| DIMENSIONAL REQUIREMENTS (AS SHOWN ON DRAWING) |
| LOAD/RATING REQUIREMENT |
| MATERIAL REQUIREMENT |
| 1010 STEEL |
| PACKAGING REQUIREMENT |
| OTHER REQUIREMENTS |
| FINISH: ZINC COATED |



CHAMFER ON CORNERS
ACCEPTED BUT NOT
REQUIRED

THIS DRAWING IS THE PROPERTY OF ADRIAN STEEL COMPANY AND IS NOT TO BE USED IN ANY MANNER
DETRIMENTAL TO THE INTERESTS OF ADRIAN STEEL COMPANY

| TOLERANCES & INSPECTION | RELEASE & REVISIONS |
|--|--|
| UNLESS OTHERWISE SPECIFIED ALL BEND ANGLES ARE 90 DEGREES ALL DIMENSIONS ARE IN INCHES. REFERENCE DIMENSIONS (X.XXX) DO NOT REQUIRE INSPECTION | INITIAL ECN: 3808 CURRENT ECN: 22408 ECN DESCRIPTION: UPDATE THE MATERIAL USED REVISED BY: BCB |
| FEATURES 0.0 = ± .125 0.00 = ± .062 0.000 = ± .031 | HOLES/SLOTS 0.0 = ± .062 0.00 = ± .031 0.000 = ± .015 |
| ANGLES 0° = ± 2° 0.0° = ± 1° | |
| Material Thickness: per ASTM Std. Weld Callouts per AWS | |

**PURCHASED
COMPONENT**

REFERENCED SUPPLIER AND/OR MANUFACTURER
MID-STATE BOLT & NUT CO INC
REFERENCED SUPPLIER AND/OR MANUFACTURER PART NUMBER

COLOR (ONLY LIST IF COLOR SPECIFIC)

COMODITY ITEM (Y/N) (YES = ALL DIMENSIONS AND NOTES ARE REFERENCE)
(NOTE: DIMENSIONS AND FEATURES MAY VARY FOR A COMODITY ITEM.)

NO

PRINTED DOCUMENT IS UNCONTROLLED

| PART / PRODUCT IDENTIFICATION | | | |
|---------------------------------------|-------------------|----------------------------|--|
| MAT'L USED: 1010 | | DESIGNED BY: JLC | |
| DESCRIPTION: SPACER,FLR,1010,11/16 ZP | | REVISION LEVEL D | |
| WEIGHT (Lbs.): 0.11 | SEGMENT CODE: FAS | PART NUMBER: 03927-2 | |