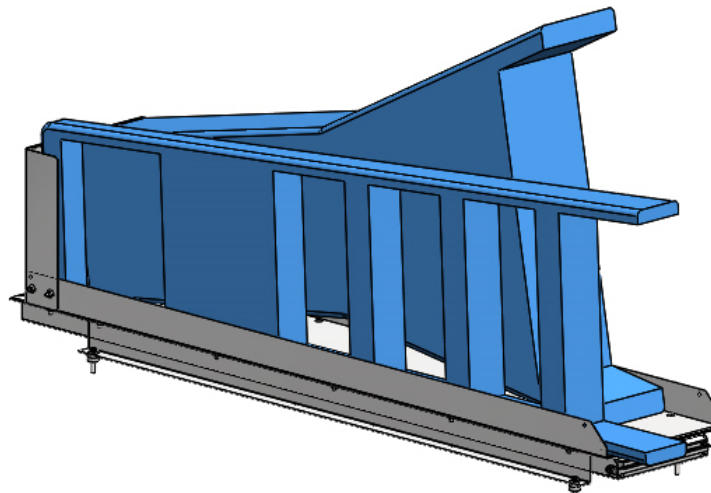
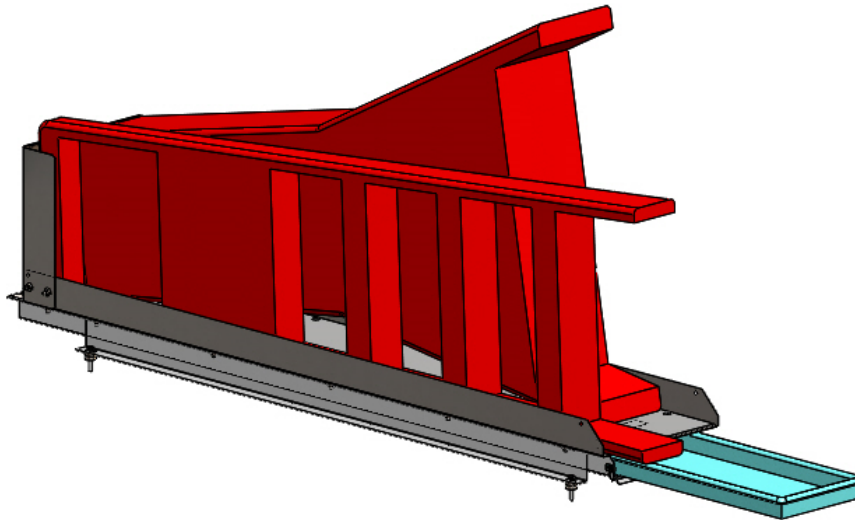


**Introduction / Comments:**

**LADDER SHELF, DRILL BIT HOLDER.** Designed for 2015 transit connect to hold (1) Select Step 5'-8 , and (1) Airwing 6' ladder side by side on shelf.  
The slide out tray is for drill bits up to 6' in length

**Note:**

It is advised that all fasteners used in this assembly and installation should be checked for tightness at the following intervals: @ 2-weeks and again @ 6-weeks of operation. This preventive maintenance step must be completed to ensure your Product gives you long service life.



**LADDER SHELF, DRILL BIT HOLDER**  
**14"W X 66" L**

## - PRECAUTIONS -





 **CAUTION**   
**THE USE OF AIR IMPACT TOOLS CAN  
OVER-TORQUE FASTENERS AND  
CAUSE FASTENER FAILURE!**





 **CAUTION**   
**ALL INSTALLATION HOLES SHOULD BE SEALED  
WITH SILICON OR BUTYL SEALANT TO PREVENT  
EXHAUST FUMES FROM ENTERING THE VEHICLE!**



 **DANGER**   
**INSPECT FOR FUEL TANK, FUEL LINES, BRAKE LINES, HIGH  
VOLTAGE BATTERIES AND ELECTRICAL LINES PRIOR TO  
DRILLING TO AVOID DAMAGING CRITICAL VEHICLE SYSTEMS  
OR INJURY TO INSTALLER DURING INSTALLATION PROCESS!**



 **CAUTION**   
**TO AVOID DAMAGING THE VEHICLE ALWAYS USE DRILL  
STOPS WHEN DRILLING ANY INSTALLATION HOLES!  
ADRIAN AVAILABLE PART #'S 31121-0 (1/2" DEEP),  
31122-0 (3/4" DEEP)**



## - IMPORTANT WARRANTY REQUIREMENTS -

1. SUBSTITUTING ADRIAN STEEL SPECIFIED FASTENERS FOR ASSEMBLY AND/OR INSTALLATION WILL VOID YOUR PRODUCT WARRANTY.
2. ALL HOLES DRILLED INTO VEHICLE SHOULD HAVE THE RAW METAL EDGES SEALED WITH A SELF-ETCHING PRIMER TO RESIST CORROSION AND POTENTIAL FASTENER POINT FAILURE.
3. ALL FASTENERS USED IN THE INSTALLATION OF THIS PRODUCT SHOULD BE TIGHTENED TO THE TORQUE(S) SPECIFIED IN THESE INSTRUCTIONS.
4. THESE INSTRUCTIONS SHOULD BE KEPT WITH THE VEHICLE.

### THE BASIC TOOLS NEEDED FOR MOST INSTALLATIONS



DRILL



DRILL BIT WITH  
STOP



RATCHET, SOCKETS  
AND/OR WRENCHES



SCREWDRIVERS



MEASURING TAPE

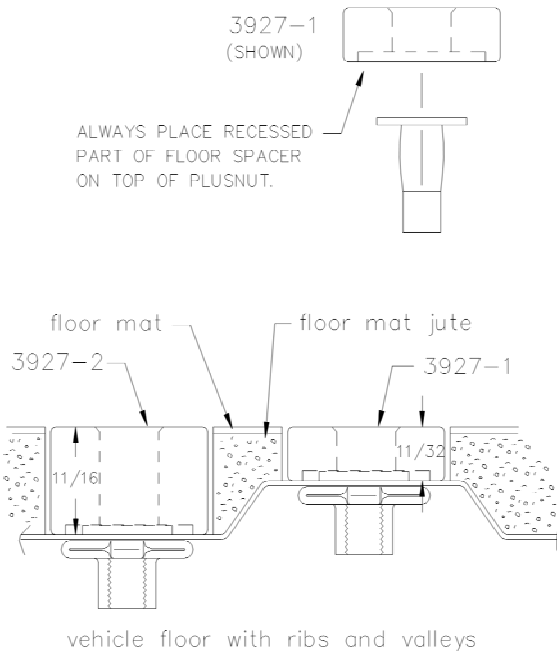
ADDITIONAL TOOLS MAY BE NEEDED FOR THIS INSTALLATION AND THEY WILL BE IDENTIFIED IN THE STEPS THAT FOLLOW.

If your vehicle contains carpet or a rubber floor mat you will need to prepare the mounting location. Position the product to be installed into the vehicle and once you are satisfied with the mounting locations, mark the mounting locations. Using a 1-3/16" diameter carpet cutter (P/N: 31183-0). Select the appropriate floor spacers as shown in the illustration. Set those aside for use later into the installation process.

Using the correct drill bit size for the selected plusnut, drill the mounting holes in the vehicle sheet metal to prepare for installing the plusnuts.

If you are thru-bolting at any of the locations simply drill a hole that is 1/16" larger than the bolt size(s) for those locations.

Once you have drilled the holes into the vehicle, the raw metal edges should be sealed using a self-etching primer to resist corrosion and potential fastener point failure.



A PLUSNUT (RIVNUT) SETTING TOOL IS REQUIRED FOR PLUSNUT (RIVNUT) INSTALLATION AND IS SUPPLIED WITH THIS KIT. OR USE AN AIR POWERED PLUSNUT SETTING GUN.

1/4-20UNC Plusnut (FAS0052) Use 3/8" dia. drill w/stop

FAS0080 SCREW, HXHD, 1/4-20UNCx2.00", G8

FAS0067 WASHER, FLAT, 1/4"ID

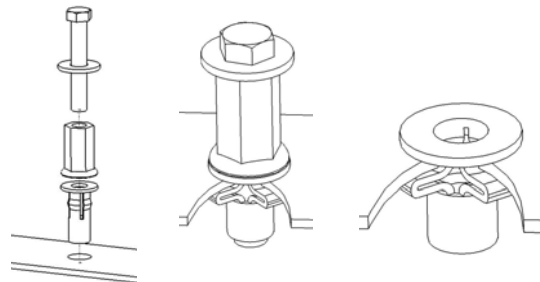
22200-0 PLUSNUT TOOL

5/16-18UNC Plusnut (FAS0091) Use 1/2" dia. drill w/stop

FAS0095 SCREW, HXHD, 5/16-18UNCx2.00", G8

FAS0086 WASHER, FLAT, 5/16"ID

22200-0 PLUSNUT TOOL

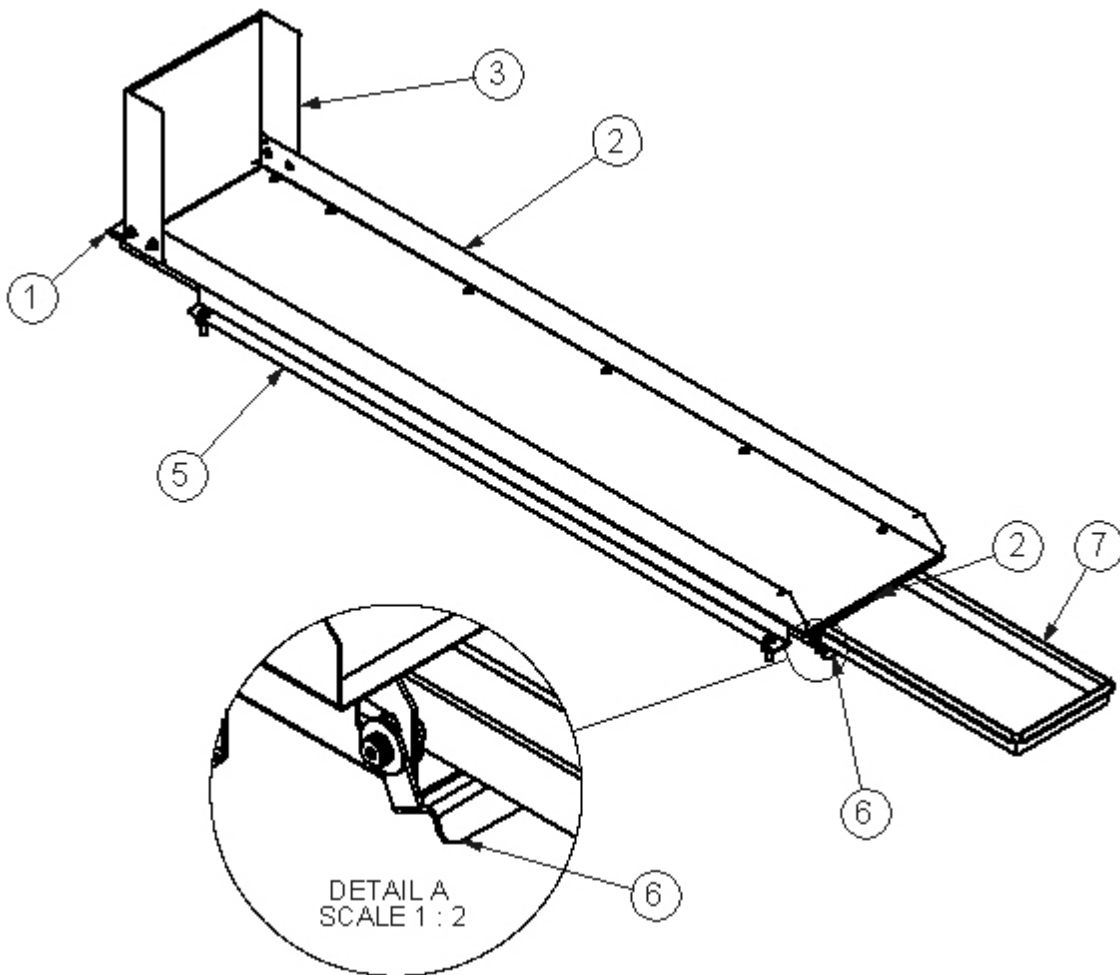


Place barrel of the plusnut body in sheet metal thru hole until flange is flush with sheet metal.

Using a 9/16" combination wrench of plusnut tool body and a second hand wrench, ratchet, or air tool, rotate the hex bolt head CW to draw plus nut flanges up (set the plusnut).

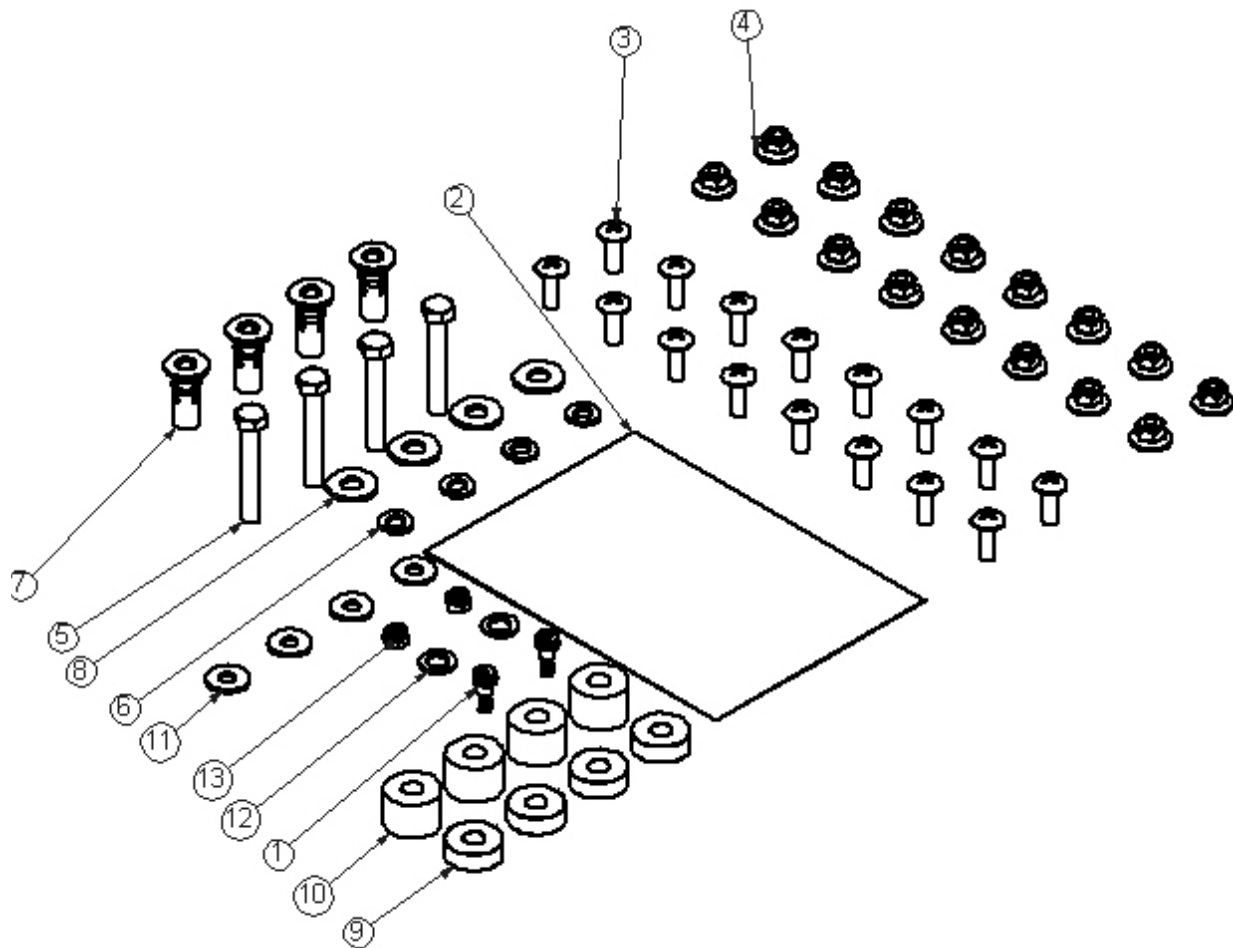
**LSDBH1466**  
**LADDER SHELF, DRILL BIT HOLDER 14" W X 66" L**

ITEM NO.	PART NUMBER	DESCRIPTION	OPEN/QTY.
1	48131-G	STEEL TRAY, LSDBH1 466	1
2	48054-G	LADDER SHELF,LSDBH1 466	1
3	48055-G	LADDER STOP BRKT	1
4	48053	SKID PLATE,LSDBH1 466	1
5	48056-G	FLOOR MOUNT BRKTS	2
6	48132-G	TRAY RETAINER BRKT.	1
7	47889	LONG PARTSTRAY	1
8	37272-0	Tape, 2 Side Adhesive	3
9	BAG48057	FAS BAG, LSDBH1 466	1

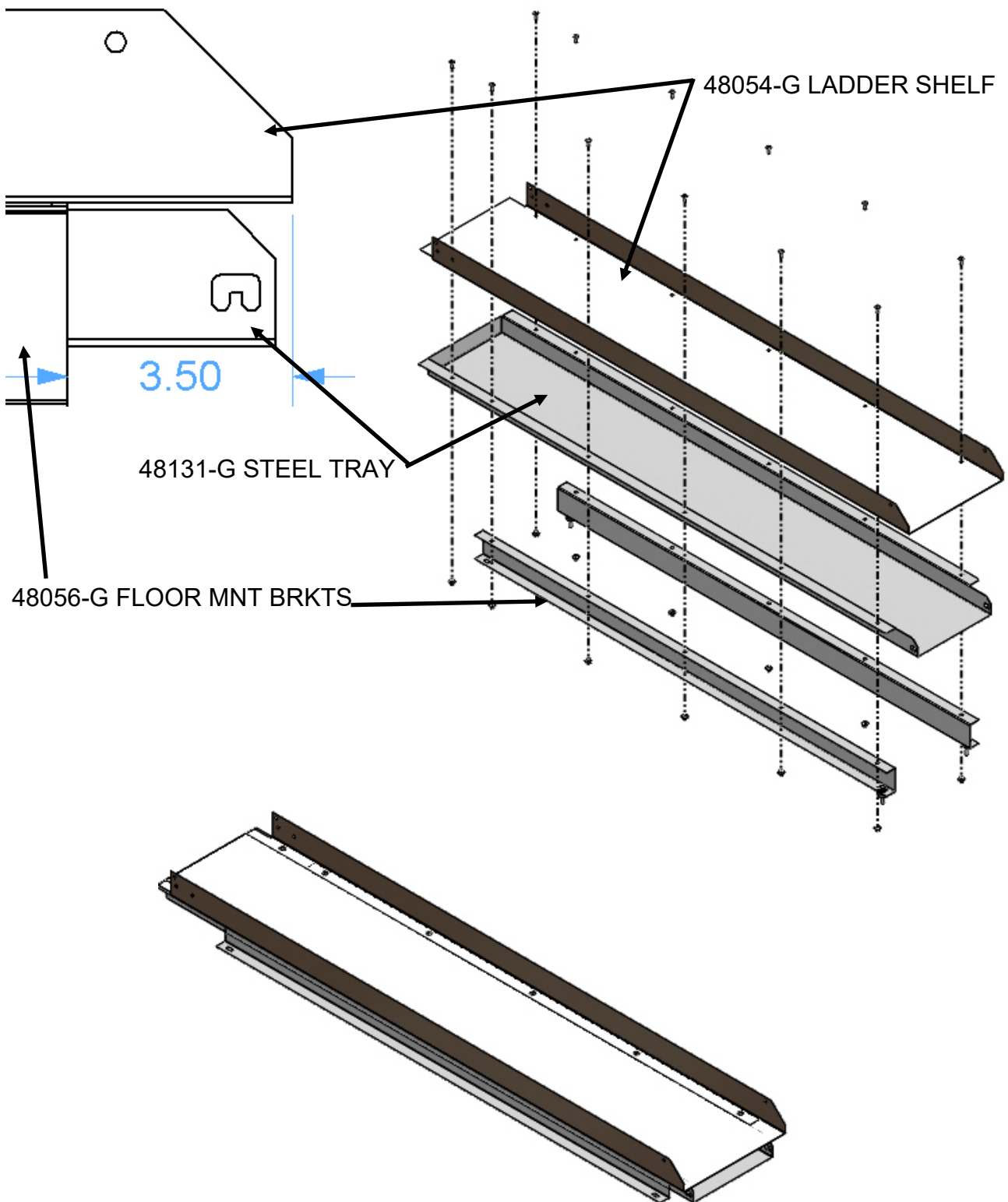


## BAG48057 FAS BAG, LSDBH1466

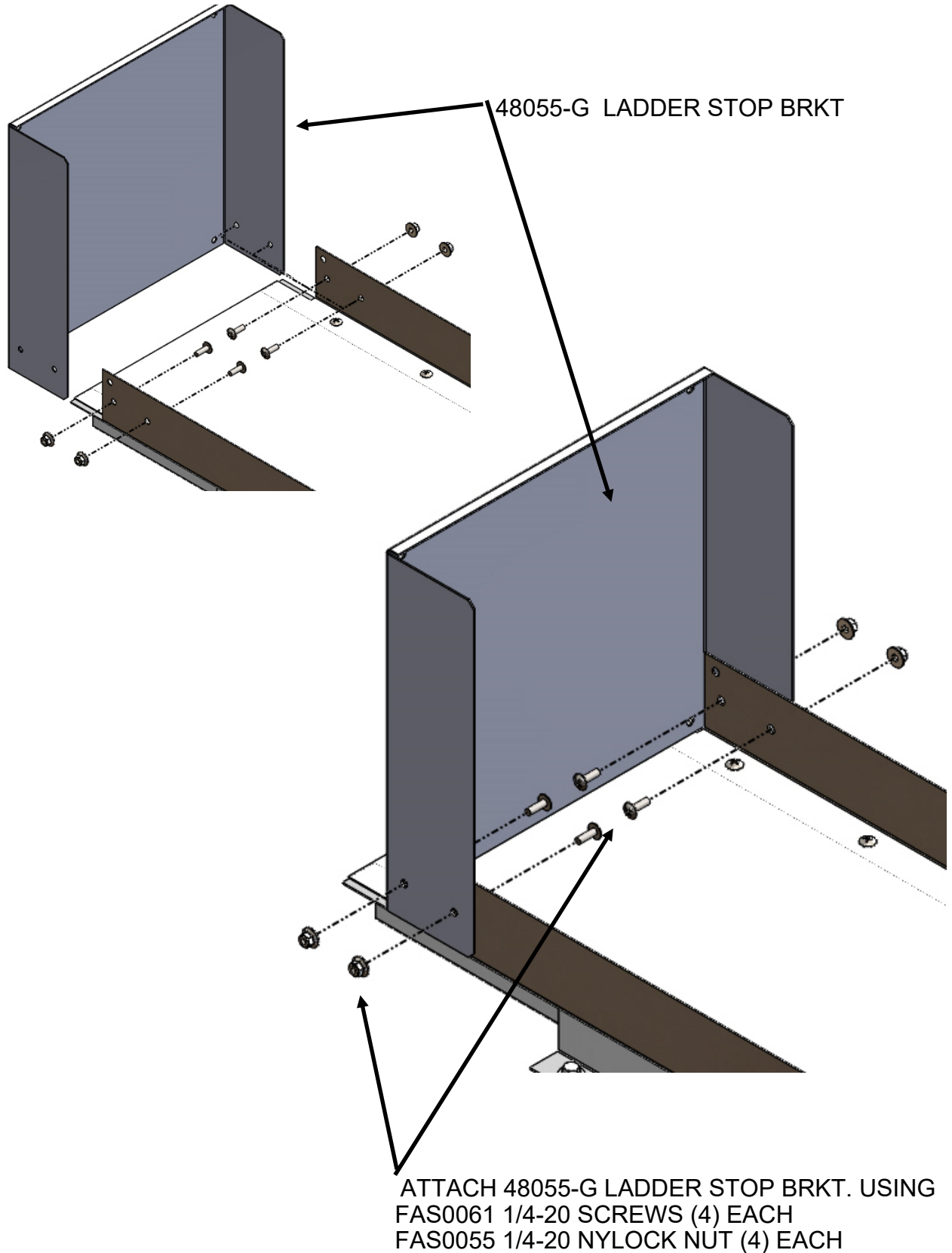
ITEM NO.	PART NUMBER	DESCRIPTION	BAG48057/QT.Y.
1	FAS0250	SCREW,SHLDR ,25 X.25,10-24	2
2	BAG0507-A	5" x 7" 3MIL AUTOBAG	1
3	FAS0062	Screw, Truss Hd. Ph, 1/4-20x0.75	16
4	FAS0055	Nut, Hex Flange,Nylock 1/4-20	16
5	FAS0095	Screw, Hex Hd, 5/16-18x2.00 , Grade 8	4
6	FAS0098	Washer, Lock , Split, 5/16, Zinc Plate	4
7	FAS0091	Plusnut, 5/16	4
8	FAS0112	Washer, Flat, 5/16, NI ZN	4
9	03927-1	Floor Spacer Short	4
10	03927-2	Tall Floor Spacer	4
11	FAS0067	Washer, Flat, 1/4	4
12	10103-0	5/16 Nylon Washer	2
13	FAS0029	Nut, Nylon Insert Lock , #10-24	2



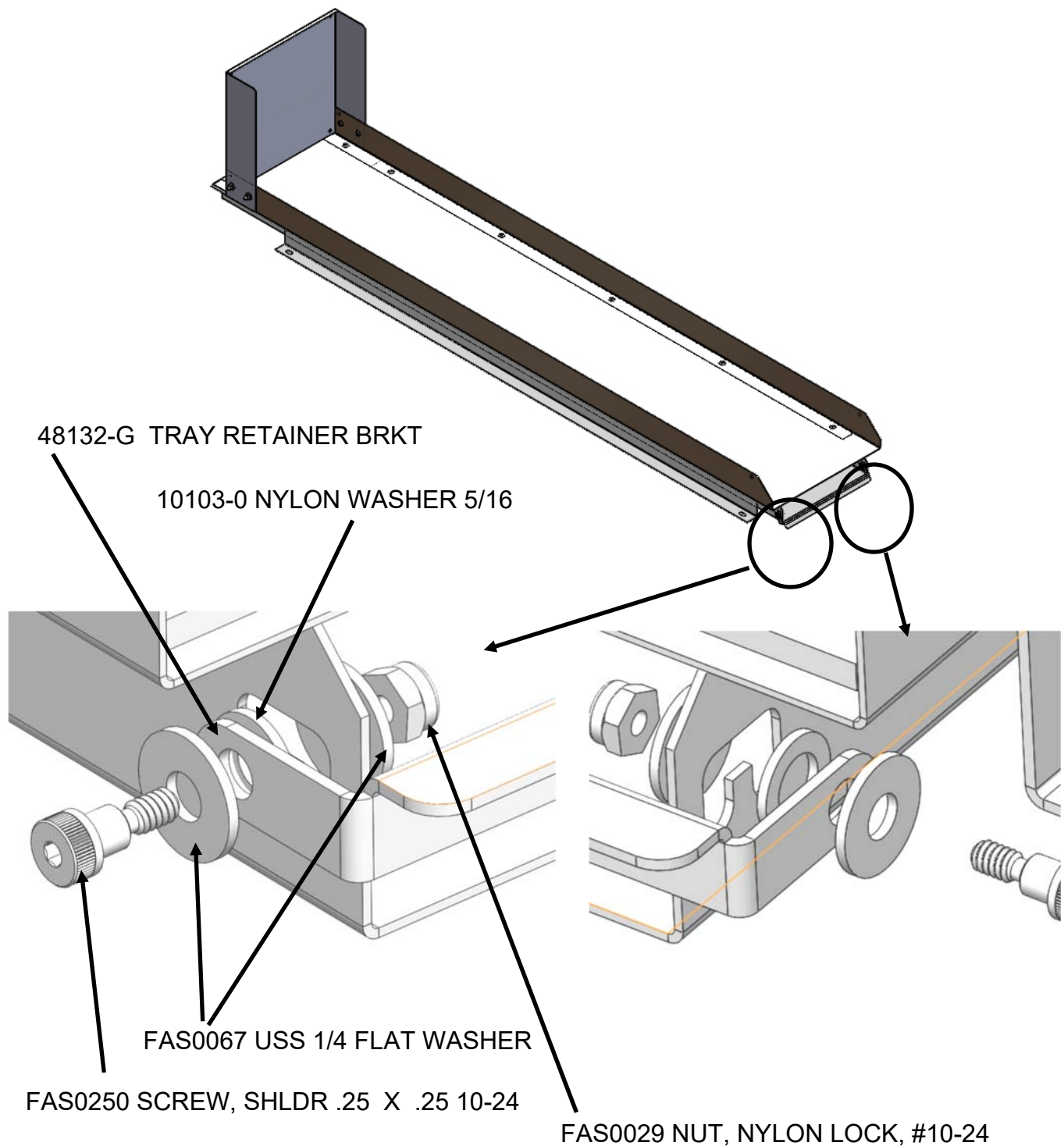
LINE UP AND ATTACH 48131-G STEEL TRAY, 48054-G LADDER SHELF, AND BOTH 48056-G FLOOR MNT BRACKETS. Use (12) FAS0062 1/4-20 X .75 TRUSS HEAD SCREWS, AND (12) FAS0055 1/4-20 HEX FLANGE NYLOCKS



**INSTALL 48055-G LADDER STOP BRKT TO ASSEMBLY FROM LAST PAGE**



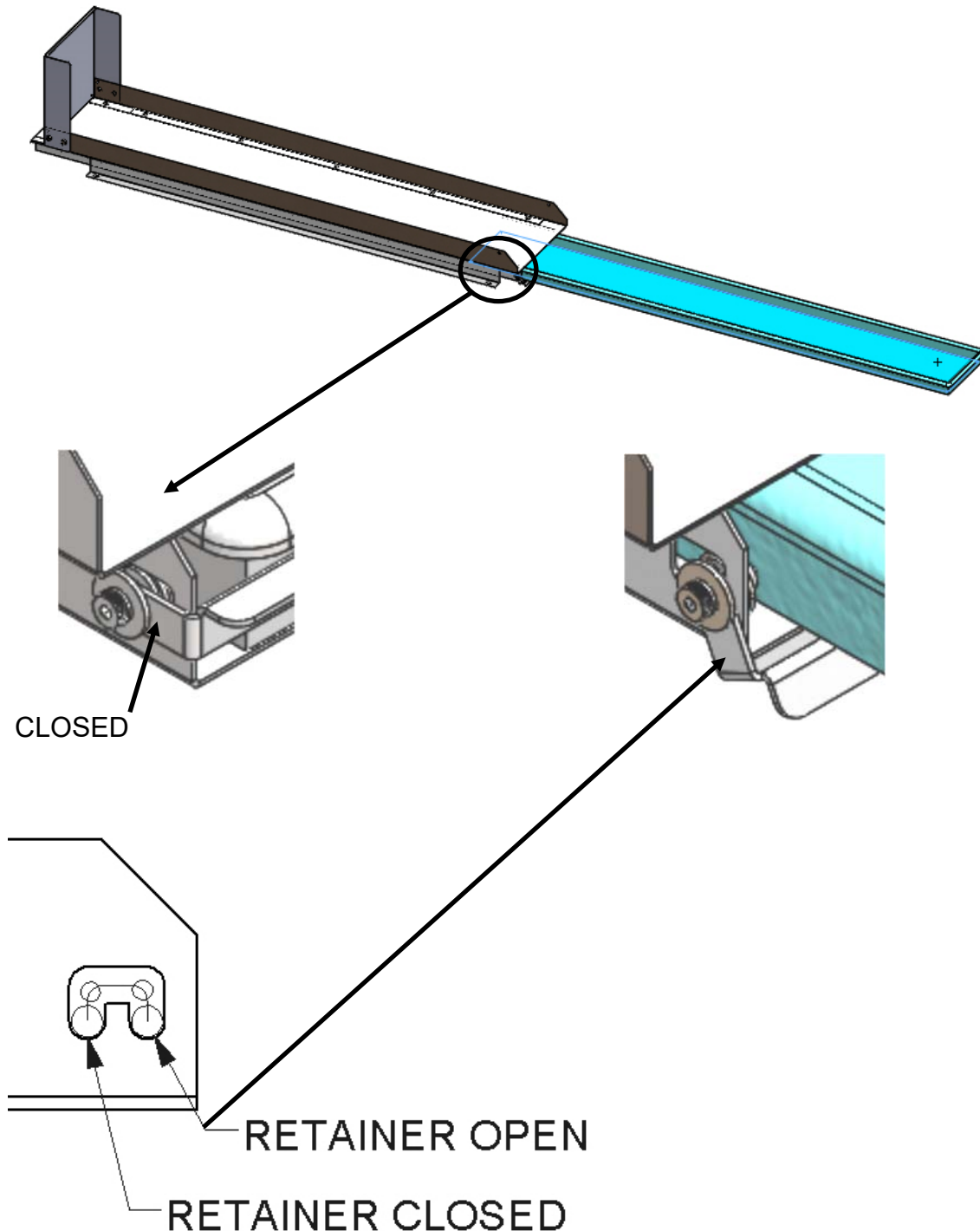
ATTACH 48132-G TRAY RETAINER BRKT TO 48131-G STEEL TRAY



DO NOT FULLY TIGHTEN, RETAINER MUST BE ABLE TO MOVE AND ROTATE INSIDE OF THE CUTOUT CHANNEL TO LOCK OR OPEN AND ALLOW THE LONG PARTS TRAY 47889 TO BE PULLED OUT. CONTINUED NEXT PAGE

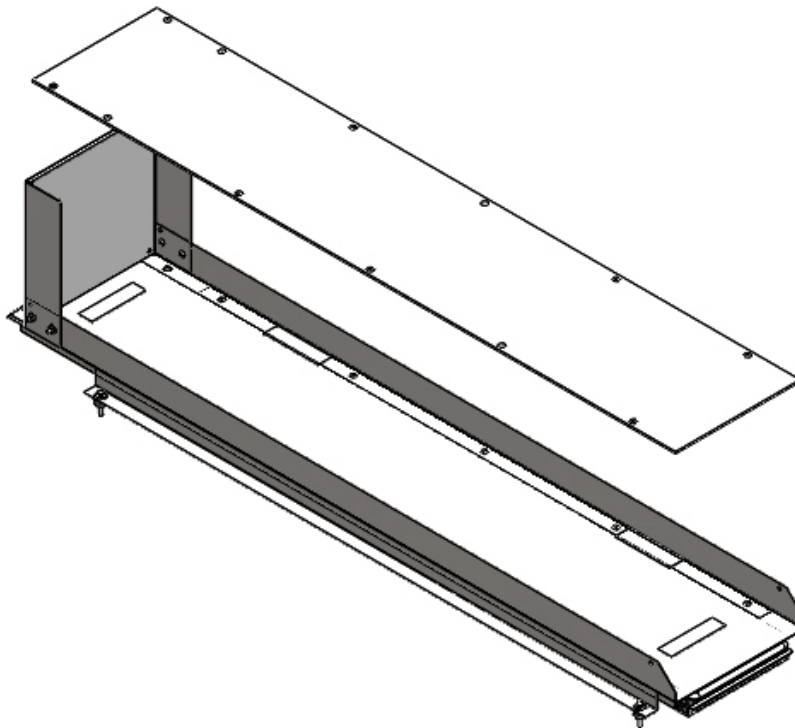
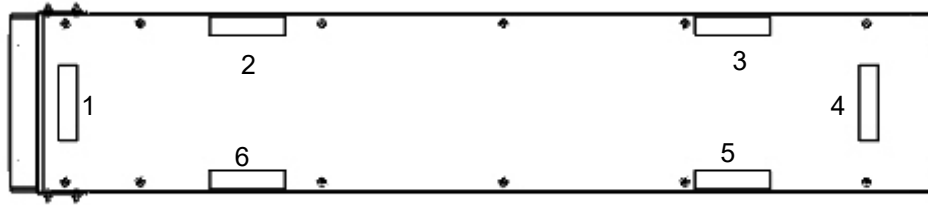


SLIDE 47889 LONG PARTS TRAY INTO 48131-G STEEL TRAY ALL THE WAY. USE BOTH HANDS AND PULL 48132-G RETAINER UP AND PUSH TO REAR SLOT PULL DOWN UNTIL SEATED

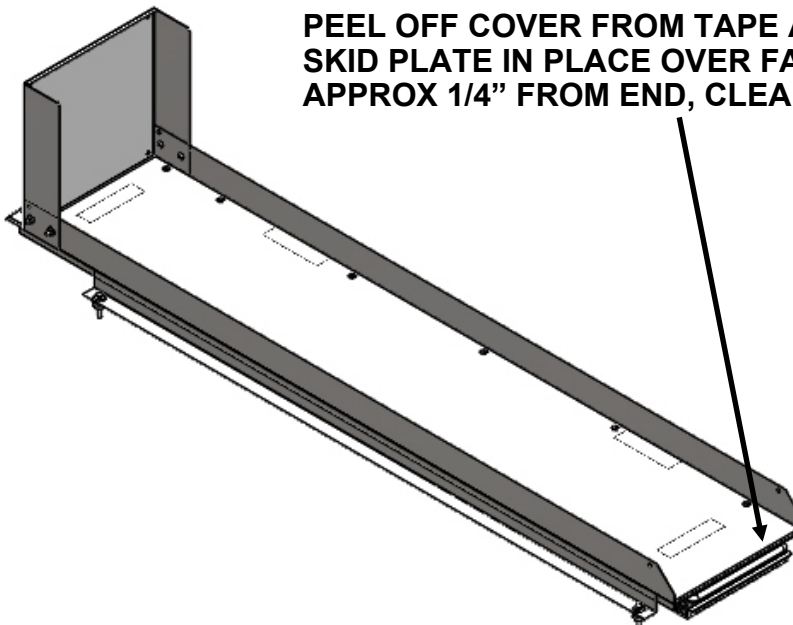


**APPLY 2 SIDE ADHESIVE TAPE TO 48054-G LADDER SHELF**

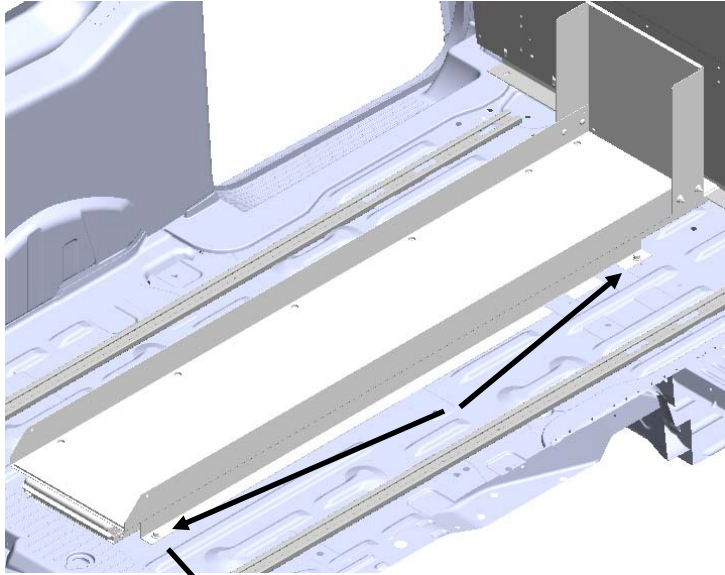
**CLEAN SURFACE , CUT (3) 37272-0 IN HALF,  
PLACE (6) PIECES AS SHOWN ON 48054-G LADDER SHELF.**



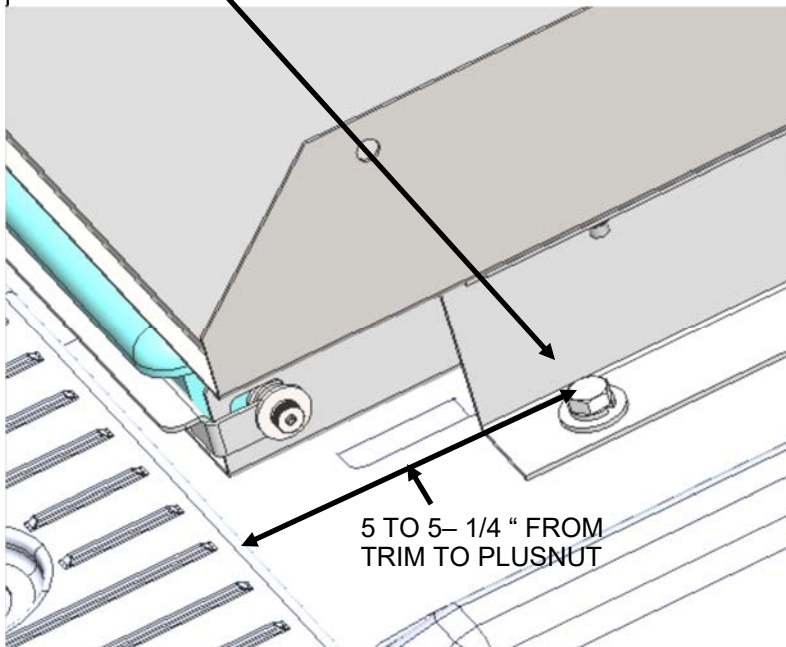
**PEEL OFF COVER FROM TAPE AND CAREFULLY PLACE  
SKID PLATE IN PLACE OVER FASTENERS ROUGH SIDE UP.  
APPROX 1/4" FROM END, CLEAN SKID PLATE BEFORE .**



LOCATE LADDER SHELF AS SHOWN 5 TO 5-1/4" FROM FLOOR TRIM. MARK HOLE LOCATIONS USING SLOTS IN MOUNTING BRACKETS. MOVE LADDER SHELF ASIDE AND DRILL AND SET 5/16 PLUSNUTS . PLACE LADDER SHELF BACK IN LOCATION, DEPENDING ON FLOORING CONDITION, MAT, HARD FLOOR , RIBS, YOU MAY NEED SMALL OR LARGE SPACERS PROVIDED, UNDER BRACKETS.

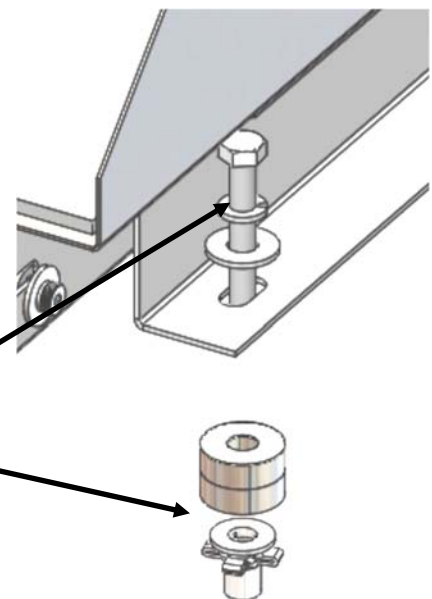


SIDE TO SIDE LOCATION WILL  
DEPEND UPON THE PACKAGE

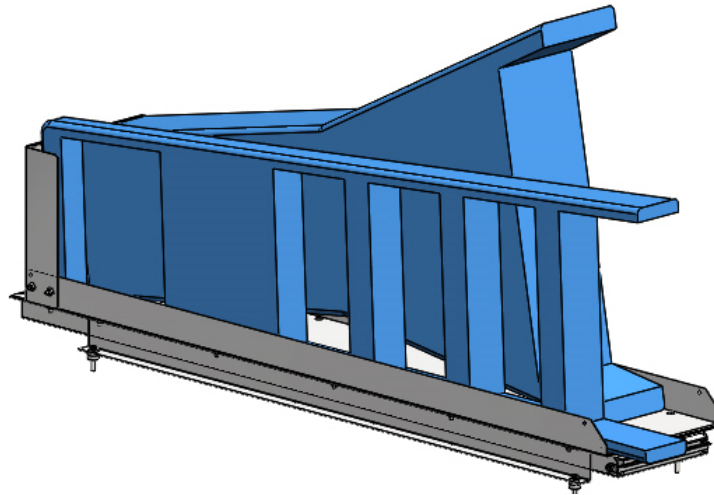
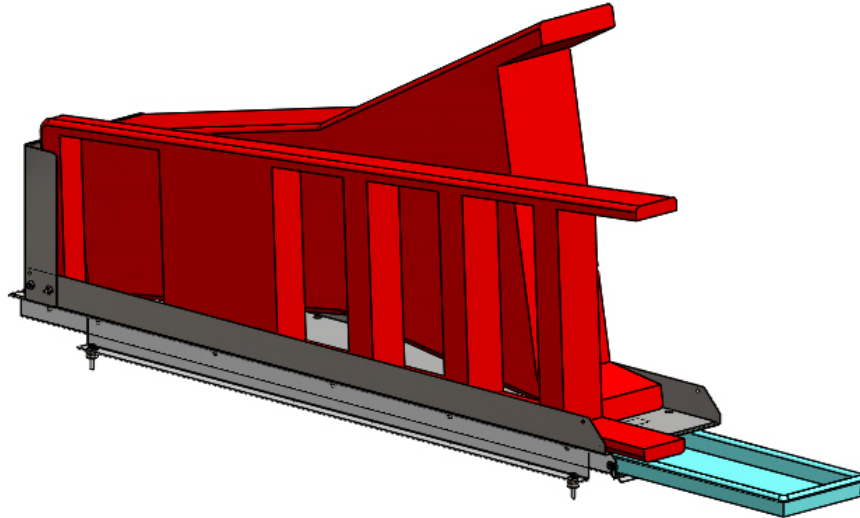


5 TO 5- 1/4 " FROM  
TRIM TO PLUSNUT

FAS0095 HH SCREW 5/16-18 X 2  
FAS0098 5/16 SPLIT LOCK WASHER  
FAS0112 5/16 FLAT WASHER  
03927-1 OR 03927-2 SPACER IF NEEDED  
FAS00915/16 PLUSNUT  
ALL FOUR LOCATIONS



**YOUR INSTALLATION IS COMPLETE!**



**DOUBLE CHECK ALL FASTENERS LOCATIONS TO BE SURE THAT ALL  
FASTENERS ARE TIGHTENED TO SPECIFICATIONS.  
YOUR INSTALLATION IS NOW COMPLETE!  
STOW THIS COPY IN THE VEHICLE FOR FUTURE REFERENCES!**