



ADRIAN STEEL

Cargo Management Solutions for Commercial Vehicles

HOSE HOLDER, BLACK

PRODUCT WEIGHT

3.46 LBS

WIDTH X DEPTH X HEIGHT

12.73" X 5.84" X 7.49"

CAPACITY

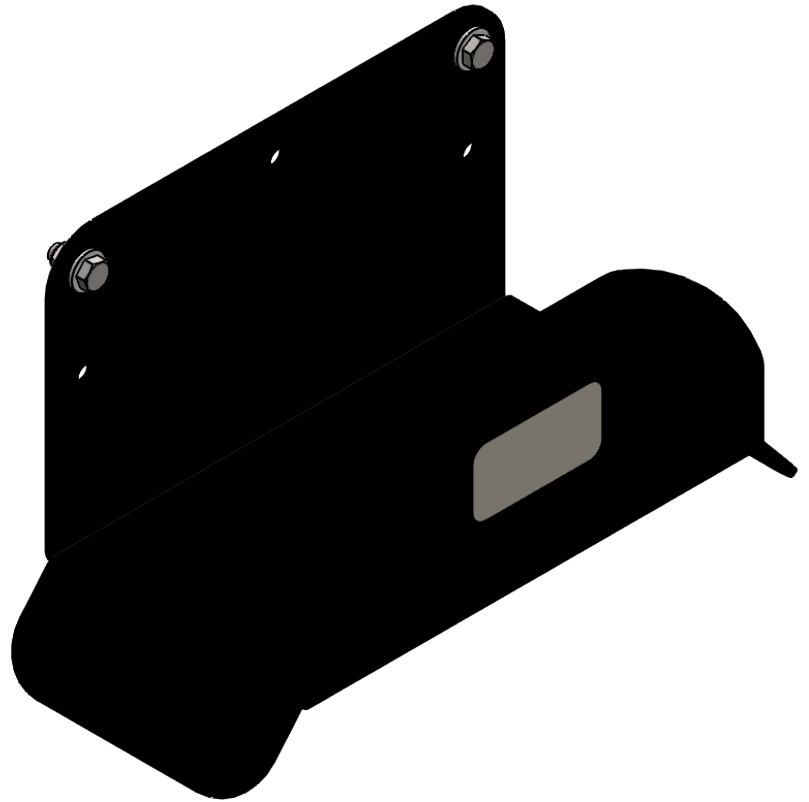
100FT HOSE

COLOR

BLACK

CATALOG NUMBER

HOSEHLDR

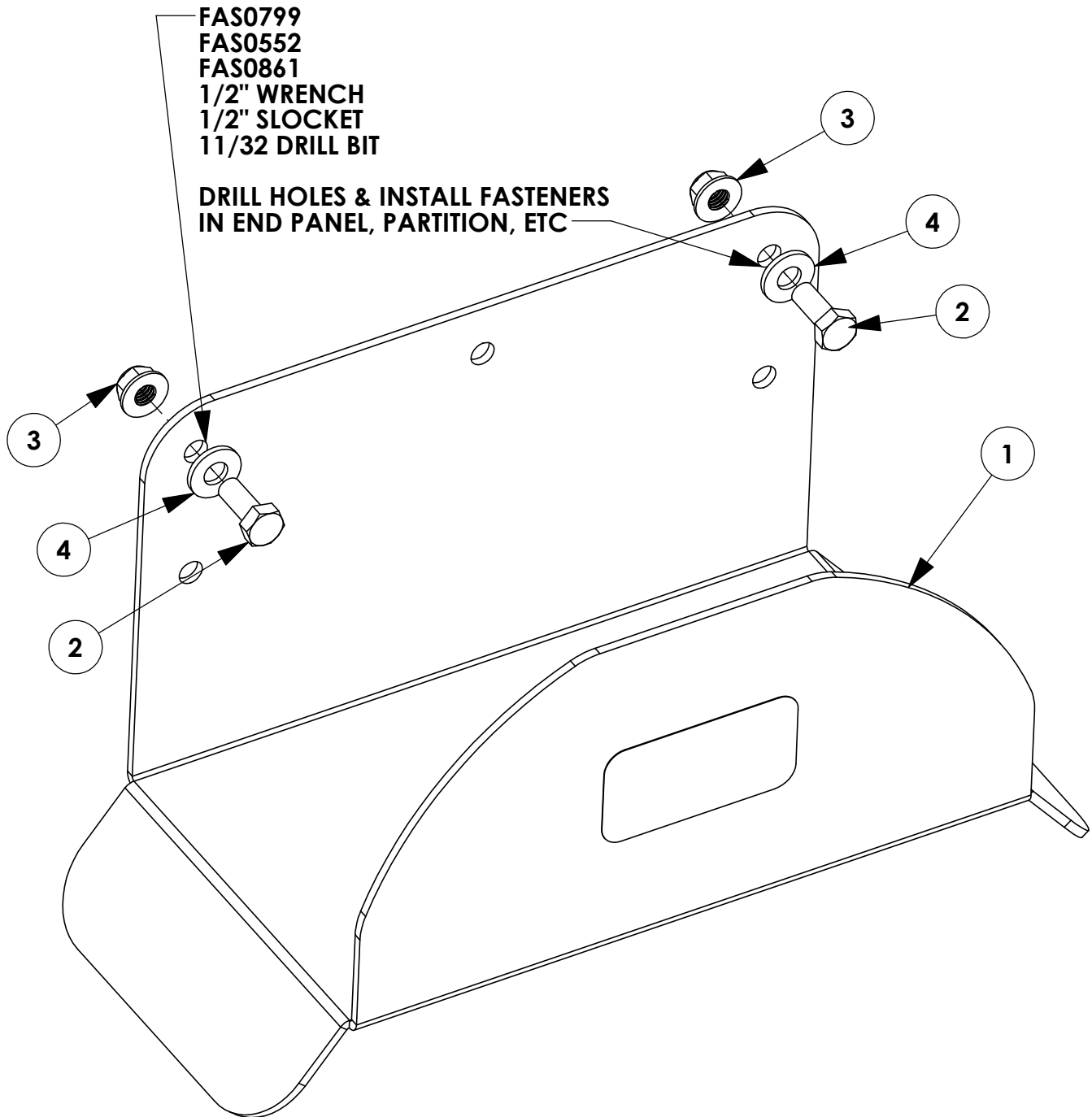


PRODUCT FEATURES

THIS PRODUCT IS USED TO CARRY HOSE. IT CAN BE USED IN ANY VEHICLE AND INSTALLED ANYWHERE (IE PARTITION, END PANEL, ETC). IS COMPATIBLE WITH NEXT GENERATION SHELVING. THIS HOLDER WILL HELP ORGANIZE HOSES INSIDE THE VAN BY PROVIDING SOMEWHERE TO CARRY THE WRAPPED HOSE IN THE VEHICLE RATHER THAN JUST BE THROWN IN ONE THE FLOOR OR IN A CORNER.

INSTR. NUMBER	PG:	REV:	ITEM NO.	PART NUMBER	DESCRIPTION	QTY.
: 70046	1	B	1	68693-B	HOSE HOLDER BRKT, BLK	1
PART NUMBER : HOSEHLDR			2	FAS0799	Screw, Hex Hd, 5/16-18x0.75 SS	2
PART DESC. : HOSE HOLDER			3	FAS0861	NUT, HEX NLK FLG 5/16-18SS	2
			4	FAS0552	Washer, Flat, 5/16, SST	2
			5	BAGPEPACC MNT4	BAG END PANEL MOUNTING, 4	1

BEGIN ASSEMBLY
STEP 1: INSTALL HOLDER TO END PANEL, PARTITION, ETC



FOR INSTALLATION TO NEW ASC END PANEL, SEE PAGE 4!

GET TO KNOW THE VEHICLE - AT THE BEGINNING OF ANY INSTALLATION, CHECK THE LOCATION OF THE FUEL TANK, FUEL LINES, BRAKE LINES, HIGH VOLTAGE BATTERIES AND WIRING HARNESSSES TO AVOID INJURY OR PROPERTY DAMAGE FROM TOOL CONTACT.

SEAL ALL EXTERIOR HOLES - ALL INSTALLATION HOLES SHOULD BE SEALED WITH BUTYL TAPE OR SILICON TO PREVENT WATER AND EXHAUST GASES FROM ENTERING THE VEHICLE.

CONTROL DRILL DEPTH - TO AVOID DAMAGE TO THE VEHICLE, USE A DRILL STOP OR CLEARED STEP BIT WHEN DRILLING INSTALLATION HOLES.

ALWAYS ADD PRIMER - WHEN ADDING INSTALLATION HOLES BE SURE TO USE A SELF-ETCHING PRIMER TO PREVENT CORROSION, FASTENER FAILURE AND INJURY.

MOUNTING POINTS MUST HAVE METAL-TO-METAL CONTACT - USE PROVIDED MOUNTING SPACERS TO ACCOMMODATE FOR VEHICLE FEATURES, CARPET OR SUBFLOORS.

PROVIDE CLEARANCE FOR SPACERS - IF THE INSTALLATION VEHICLE CONTAINS A CARPET OR SUBFLOOR, USE A 1-3/16" DIAMETER CARPET CUTTER (P/N: 31183-0) AT ALL MOUNTING LOCATIONS TO OPEN UP ROOM FOR SPACERS.

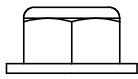
CHECK SPACER ORIENTATION - BE SURE THAT THE INDENT IN THE SPACER COVERS THE PLUSNUT HEAD; THIS ENSURES THE MOST METAL-TO-METAL CONTACT AND REDUCES VIBRATION.

PLUSNUT INSTALLATION - A PLUSNUT GUN IS RECOMMENDED FOR PLUSNUT INSTALLATION FOR ITS PRODUCTION SPEED. HOWEVER, A PLUSNUT SETTING TOOL CAN ALSO BE USED (P/N: 22200-0).

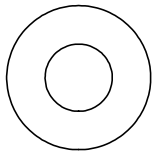
THRU-BOLT CLEARANCE - WHEN USING A THRU-BOLT AT ANY MOUNTING LOCATION, BE SURE THAT YOUR HOLE HAS 1/16" CLEARANCE.

FASTENERS USED

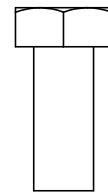
BAGS REFERENCED: BAG69581 AND BAGPEPACCMNT4



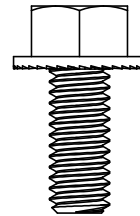
FAS0861
NUT,HEX NLK FLG 5/16-18SS
QTY: 2



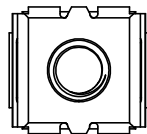
FAS0552
WASHER,FLAT USS 5/16 SS
QTY: 2



FAS0799
SCREW,HH 5/16-18X.75 SS
QTY: 2



FAS0438
SCREW,HFLNG 5/16-18X.75ZP
QTY: 4



FAS0915
SNAP-IN NUT,0.028-0.056"
QTY: 4

BEGIN ASSEMBLY

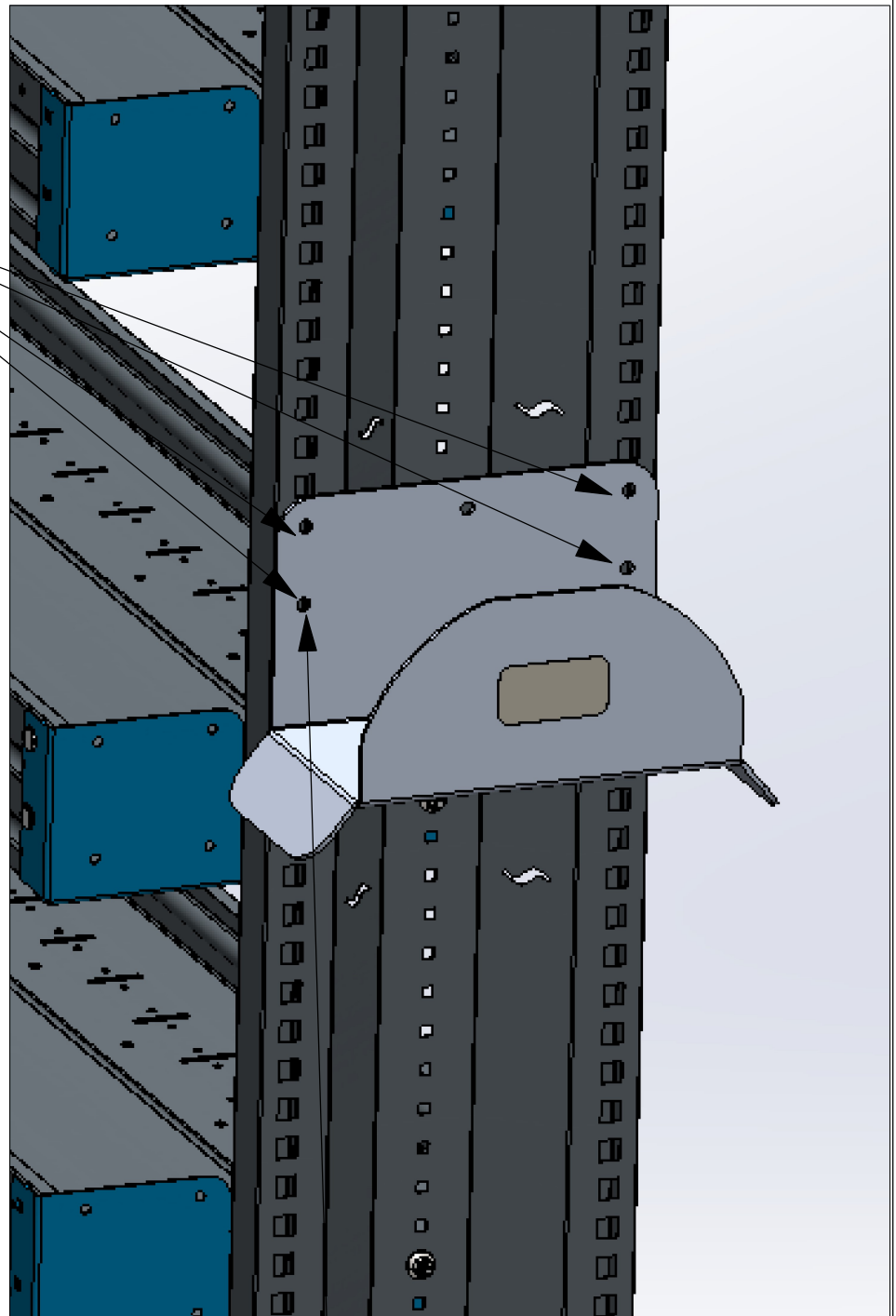
STEPS 1-3 - MOUNTING TO NEW ASC END PANEL

USE FAS0915 AND FAS0438
(4 PLACES)
1/2 WRENCH
1/2 SOCKET

STEP 1: ALIGN HOSEHLDR
TO DESIRED LOCATION.
MARK SQUARE EP CUT
OUTS AND INSERT
FAS0915 (QTY: 4)

STEP 2: ONCE CLIP NUTS
ARE INSERTED, RE-ALIGN
HOSEHLDR AND FETEN
USING FAS0438 (QTY: 4)
AND 1/2" SOCKET OR
WRENCH

STEP 3: FULLY TIGHTEN
ALL FASTENERS



KEY POINT: OUTSIDE
HOLES (QTY: 4) USED
FOR NEW EP

INSTALLATION IS COMPLETE!!