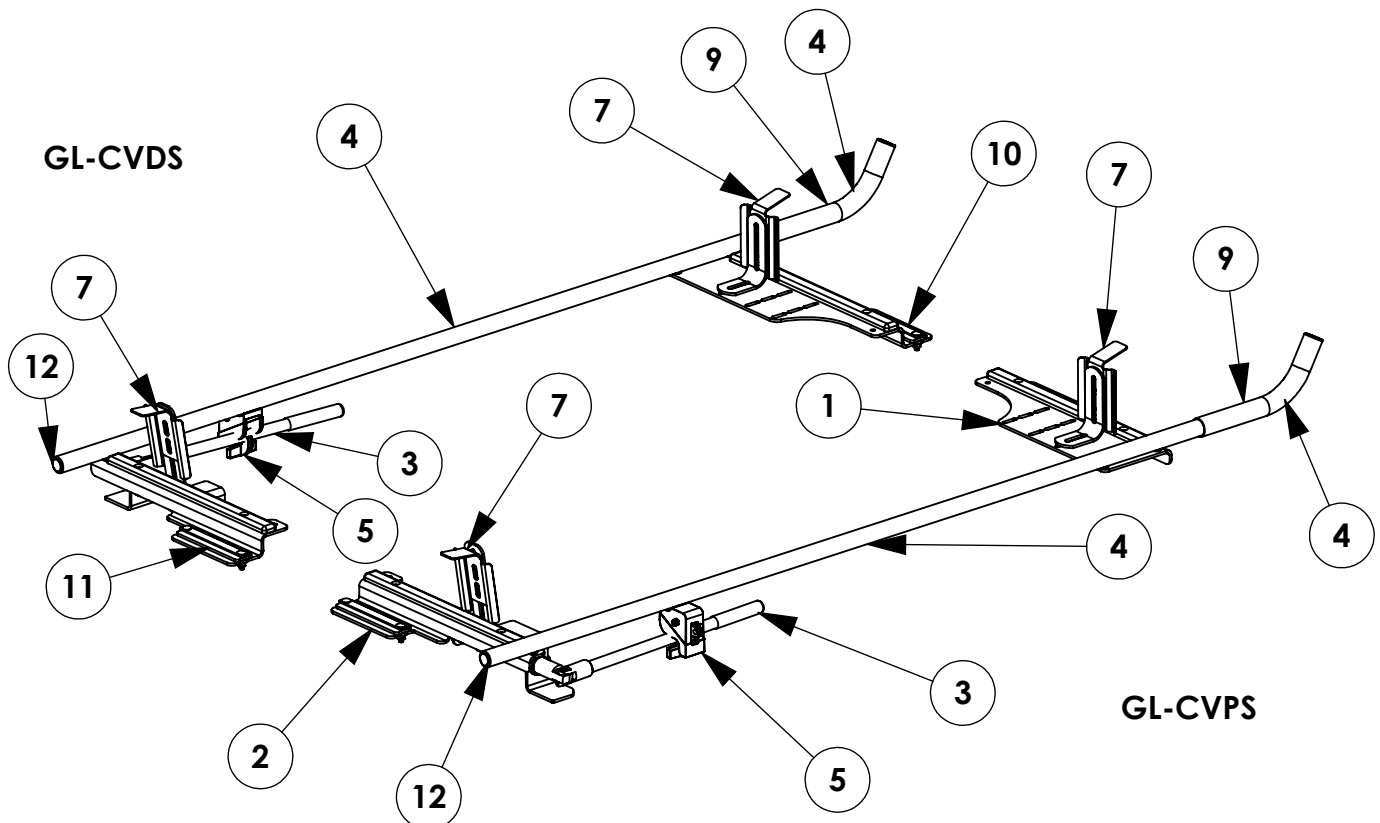


INSTR. NUMBER : 68554		PG: 1	REV: B	ITEM NO.	PART NUMBER	DESCRIPTION	GL-CVDS	GL-CVPS
PART NUMBER : GL-CVDS & GL-CVPS				1	66359	GRIP LOCK FRONT BRACE ASSM CS	1	-
				2	66360	GRIP LOCK REAR BRACE ASSM CS	1	-
PART • GRIP LOCK, COMPACT VAN, DS DESC. • GRIP LCOK, COMPACT VAN, PS				3	66291-W	GRIP LOCK HANDLE, WHITE	1	1
<b>NOTE: THIS INSTRUCTION IS VALID FOR THE FOLLOWING KITS:</b>  <b>-GL-CVDS</b> <b>-GL-CVPS</b> <b>-GL-CVDSB</b> <b>-GL-CVPSB</b>  <b>THESE INTRUCTIONS CAN BE USED FOR A SINGLE OR DOUBLE GRIP LOCK ON VARIOUS LOW ROOF VEHICLES</b>				4	68434	GRIP LOCK, CP TUBE ASM	1	1
				5	25340-0	HANDLE LATCH-STD	1	1
				6	50981-B	FRONT STOP POST	1	1
				7	66292-B	CLAMP PAD, BLACK	2	2
				8	66289-W	GRIP LOCK HANDLE POST, WHITE	1	1
				9	27254-B	SLEEVE-HORN,L.R. BLACK	1	1
				10	66361	GRIP LOCK FRONT BRACE SS ASSM	-	1
				11	66362	GRIP LOCK REAR BRACE ASSM SS	-	1
				12	51363	CAP PLUG, RND 1.00, BLACK	1	1

- PART NUMBERS WITH "-W" SUFFIXS ARE PAINTED WHITE  
- FOR WHITE MOUNTING KITS, REPLACE "-W" WITH "-B" PARTS  
NOTE: 66359, 66360, 66361, & 66362 ARE ALSO AVAILABLE IN BLACK VARIANTS  
- FOR THEIR IDENTIFICATION, ADD THE "-B" SUFFIX TO THE END OF THE PART NUMBER



**GET TO KNOW THE VEHICLE** - AT THE BEGINNING OF ANY INSTALLATION, CHECK THE LOCATION OF THE FUEL TANK, FUEL LINES, BRAKE LINES, HIGH VOLTAGE BATTERIES AND WIRING HARNESSSES TO AVOID INJURY OR PROPERTY DAMAGE FROM TOOL CONTACT.

**SEAL ALL EXTERIOR HOLES** - ALL INSTALLATION HOLES SHOULD BE SEALED WITH BUTYL TAPE OR SILICON TO PREVENT WATER AND EXHAUST GASES FROM ENTERING THE VEHICLE.

**CONTROL DRILL DEPTH** - TO AVOID DAMAGE TO THE VEHICLE, USE A DRILL STOP OR CLEARED STEP BIT WHEN DRILLING INSTALLATION HOLES.

**ALWAYS ADD PRIMER** - WHEN ADDING INSTALLATION HOLES BE SURE TO USE A SELF-ETCHING PRIMER TO PREVENT CORROSION, FASTENER FAILURE AND INJURY.

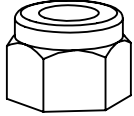
**MOUNTING POINTS MUST HAVE METAL-TO-METAL CONTACT** - USE PROVIDED MOUNTING SPACERS TO ACCOMMODATE FOR VEHICLE FEATURES, CARPET OR SUBFLOORS.

**PROVIDE CLEARANCE FOR SPACERS** - IF THE INSTALLATION VEHICLE CONTAINS A CARPET OR SUBFLOOR, USE A 1-3/16" DIAMETER CARPET CUTTER (P/N: 31183-0) AT ALL MOUNTING LOCATIONS TO OPEN UP ROOM FOR SPACERS.

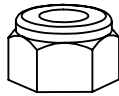
**CHECK SPACER ORIENTATION** - BE SURE THAT THE INDENT IN THE SPACER COVERS THE PLUSNUT HEAD; THIS ENSURES THE MOST METAL-TO-METAL CONTACT AND REDUCES VIBRATION.

**PLUSNUT INSTALLATION** - A PLUSNUT GUN IS RECOMMENDED FOR PLUSNUT INSTALLATION FOR ITS PRODUCTION SPEED. HOWEVER, A PLUSNUT SETTING TOOL CAN ALSO BE USED (P/N: 22200-0).

**THRU-BOLT CLEARANCE** - WHEN USING A THRU-BOLT AT ANY MOUNTING LOCATION, BE SURE THAT YOUR HOLE HAS 1/16" CLEARANCE.

**FASTENERS USED****QUANTITIES PROVIDED ARE FOR A SINGLE SIDE INSTALL**

**FAS0110**  
**3/8-16 SS**  
**NLK NUT**  
**QTY: 1**



**FAS0248**  
**5/16-18 SS**  
**NYL NUT**  
**QTY: 6**



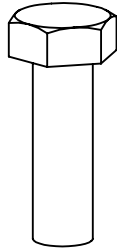
**FAS0399**  
**3/8-16 SS**  
**NYL NUT**  
**QTY: 1**



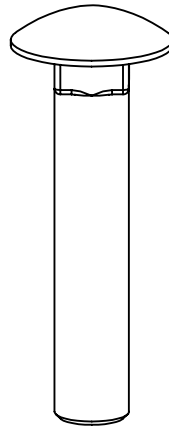
**FAS0552**  
**5/16 SS**  
**FLAT WASHER**  
**QTY: 16**



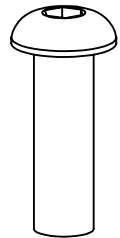
**FAS0588**  
**5/16 SS**  
**SPLIT WASHER**  
**QTY: 4**



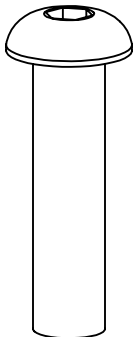
**FAS0597**  
**5/16-18 X 1.0 SS**  
**HH SCREW**  
**QTY: 2**



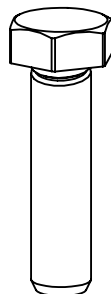
**FAS0721**  
**3/8-16 X 2.0 SS**  
**CRG BOLT**  
**QTY: 1**



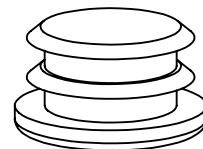
**FAS0813**  
**5/16-18 X 1.0 SS**  
**BHC SCREW**  
**QTY: 4**



**FAS0819**  
**3/8-16 X 1.5 SS**  
**BHC SCREW**  
**QTY: 1**



**FAS0830**  
**5/16-18 X 1.25 SS**  
**HH SCREW**  
**QTY: 4**



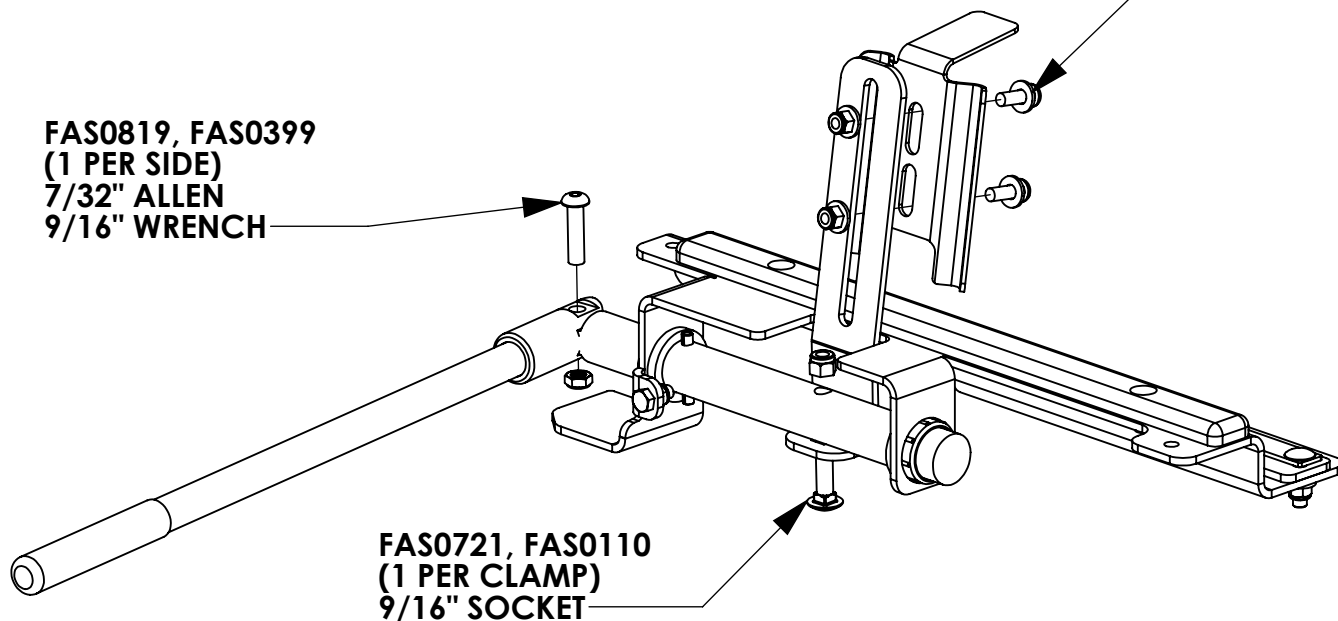
**51363**  
**1" RND BLK**  
**CAP PLUG**  
**QTY: 1**

**BEGIN ASSEMBLY****STEP 1 - ASSEMBLE REAR STOP AND HANDLE**

FAS0813, (2) FAS0552,  
FAS0248  
(2 PER CLAMP)  
3/16" ALLEN  
1/2" WRENCH

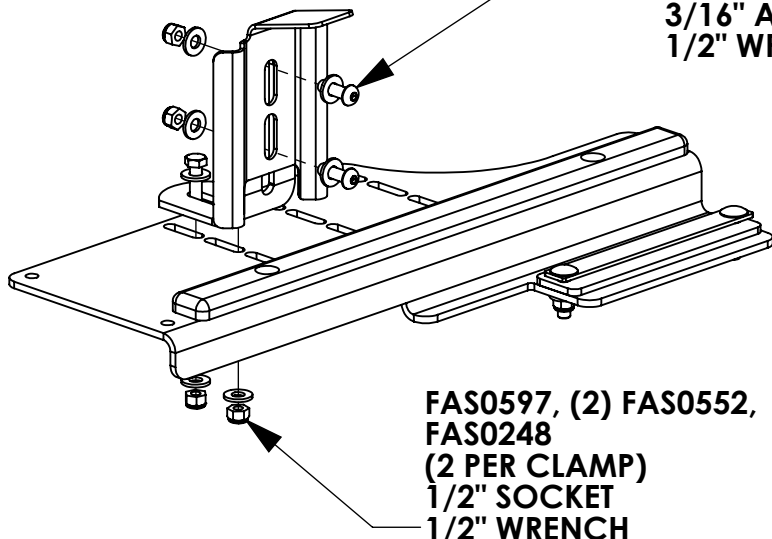
FAS0819, FAS0399  
(1 PER SIDE)  
7/32" ALLEN  
9/16" WRENCH

FAS0721, FAS0110  
(1 PER CLAMP)  
9/16" SOCKET

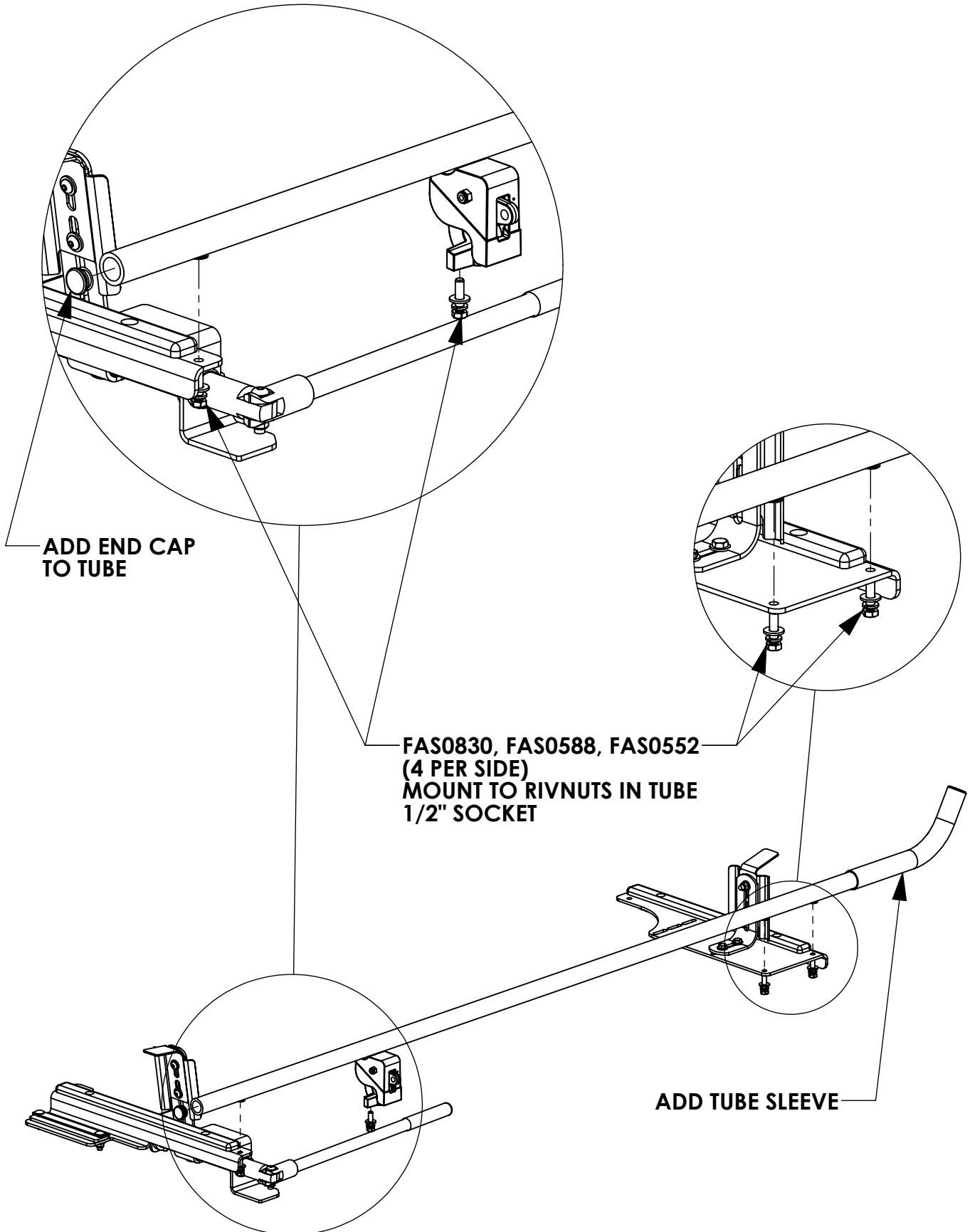
**STEP 2 - ASSEMBLE FRONT STOP**

FAS0813, (2) FAS0552,  
FAS0248  
(2 PER CLAMP)  
3/16" ALLEN  
1/2" WRENCH

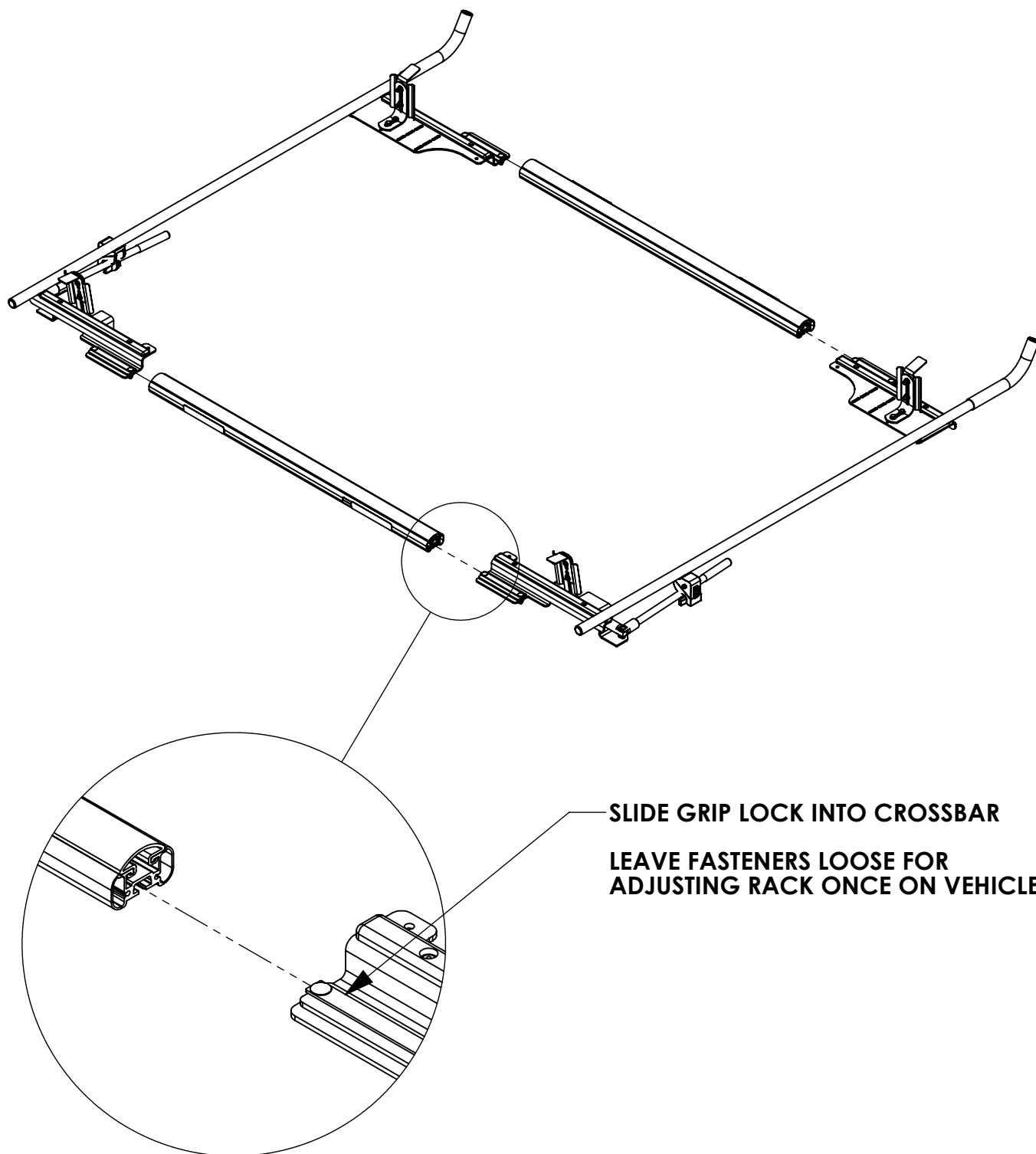
FAS0597, (2) FAS0552,  
FAS0248  
(2 PER CLAMP)  
1/2" SOCKET  
1/2" WRENCH



**STEP 3 - ASSEMBLE OUTER TUBE**

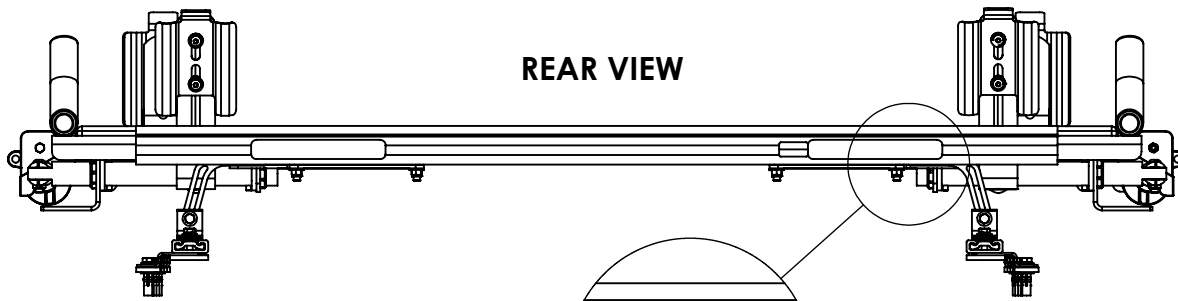


**STEP 4 - INSTALL ON CROSSBOW**

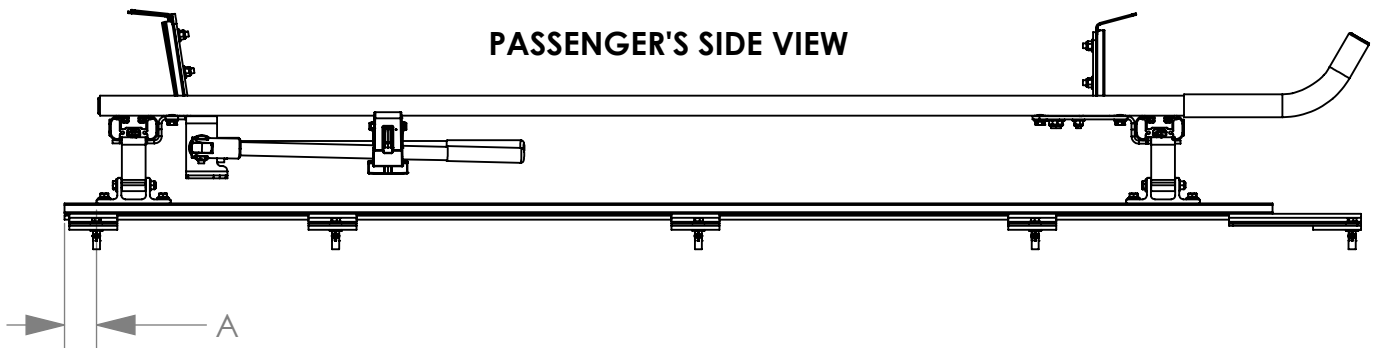


**STEP 5 - MOUNTING DIMENSIONS GUIDE**

**NOTE: IMAGES SHOW THE RAIL KIT FOR THE TRANSIT CONNECT LONG WHEELBASE FOR VISUALIZATION. VEHICLE SPECIFIC MEASUREMENTS ARE PROVIDED IN TABLE BELOW.**

**REAR VIEW**

**NOTE: SLIDE THE GRIP LOCK CARTRIDGE OUT, UNTIL IT TOUCHES THE MOUNTING BRACKET.**

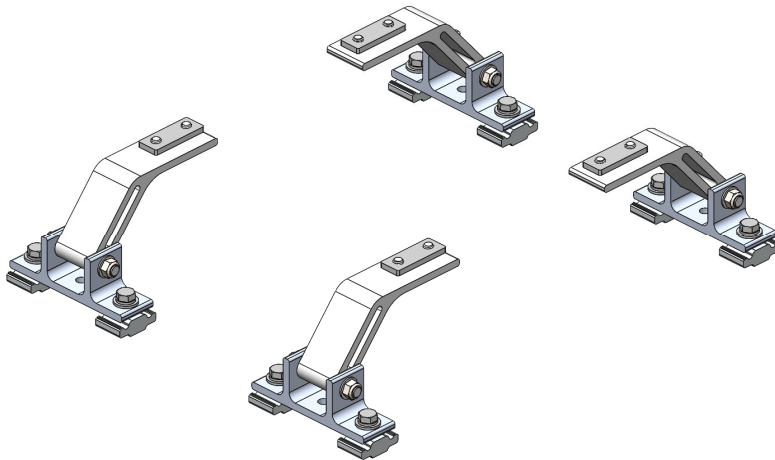
**PASSENGER'S SIDE VIEW**

VEHICLE	TRANSIT CONNECT LWB	TRANSIT CONNECT SWB	PROMASTER CITY	MERCEDES METRIS LWB	MERCEDES METRIS SWB
A	2.0	2.0	2.0	2.0	2.0

**NOTE: "A" IS DISTANCE FROM END OF ROOF RAIL TO MOUNTING BRACKET FOOT**



## Mounting Bracket Kit, 4-Pack, Black, Multiple Pickups



PRODUCT WEIGHT  
**4.0 LBS**

HEIGHT OFF ROOF  
**SEE TABLE BELOW**

CAPACITY  
**REFER TO OEM'S  
RECOMMENDED LOAD  
RATING**  
COLOR

**BLACK**

CATALOG NUMBER

**URMBK4B**

### PRODUCT FEATURES

**Aluminum mounting bracket kit for the PROFILE™ HD Utility, Grip-Lock, and/or ProLift ladder racks. Only works with the OEM specific, Adrian Steel supplied roof rail kit.**

**Utility and Grip-Lock racks are not recommended for medium or high roof vehicles!**

**Reference respective OEM specific roof rail kit for more detailed list of compatible accessories.**

**SEE PAGE 2 FOR APPLICATION NOTES AND ACCESSORIES, OTHER PRODUCTS THAT WORK WITH THIS UNIT.**

### PAGE 1 of 2

The information contained in this document is the sole property of ADRIAN STEEL COMPANY. ADRIAN STEEL COMPANY retains the right to modify and/or change the product of its design at any time without prior notification.





**CATALOG NUMBER      URM BK4B**

**PRODUCT APPLICATION**

**This product is designed to work with OEM specific rail kit for HD Utility, Grip-Lock, and/or ProLift racks. HD Utility and Grip-Lock racks are not recommended for medium or high roof vehicles!**

**ACCESSORIES THAT WILL WORK WITH THIS PRODUCT**

CATALOG NUMBER	DESCRIPTION	CATALOG NUMBER	DESCRIPTION
RRKFT	Mounting Roof Rail Kit, Transit	RRKNVFSV	Mounting Roof Rail Kit, NV
RRKSP	Mounting Roof Rail Kit, Sprinter	RRKPM	Mounting Roof Rail Kit, ProMaster, 118" WB, 159" WB, 159" WB Extended
RRKPM136WB	Mounting Roof Rail Kit, ProMaster, 136" WB	RRKSBTOP	Mounting Roof Rail Kit, Multiple Pickups
RRKLBTOP	Mounting Roof Rail Kit, Multiple Pickups		

**Reference respective OEM specific roof rail kit for more detailed list of compatible accessories.**

**3/19/2025**

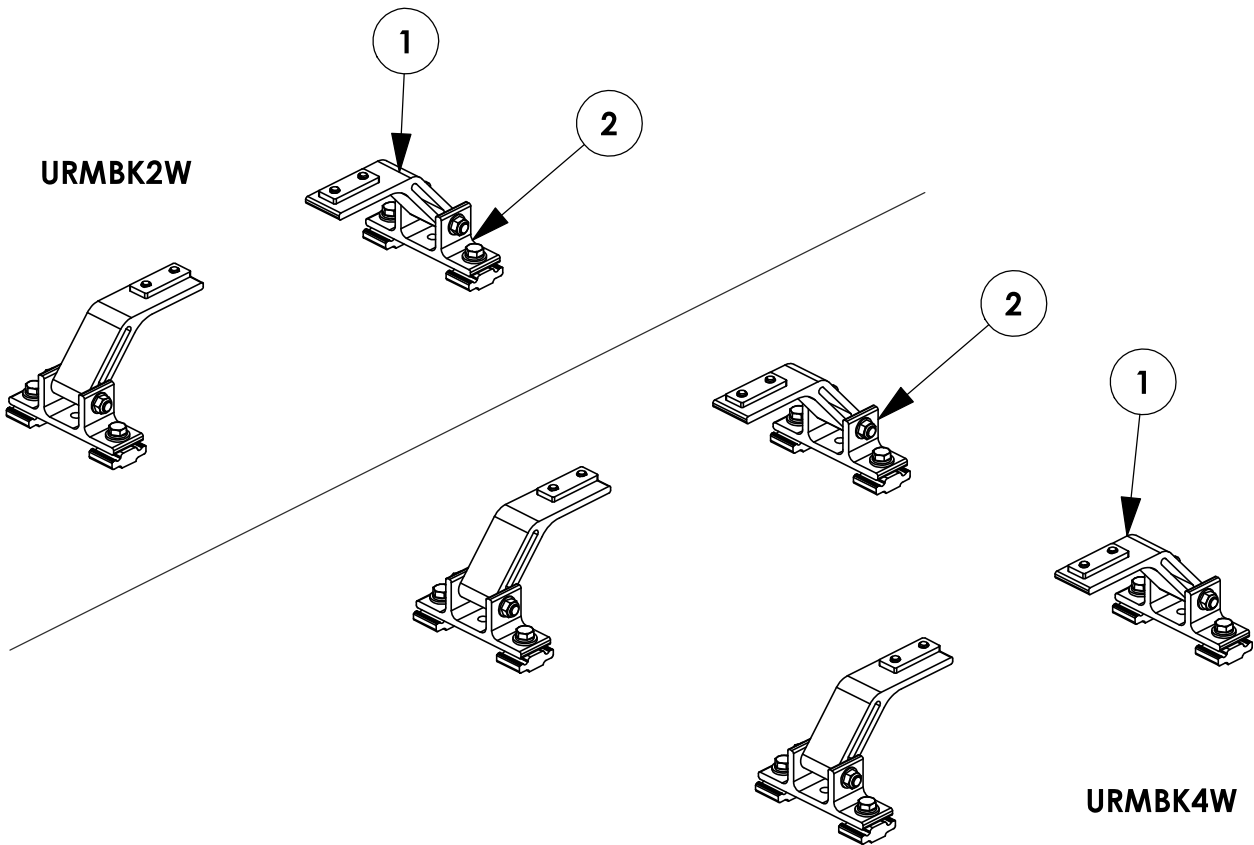
**UPDATED INSTALL POSITION  
OF URMBK ON FORD TRANSIT  
LOW ROOF IN LINE WITH  
DEVIATION #1172 - SEE PAGES  
12 AND 13 FOR DETAILS AND  
RECOMMENDATIONS. PAGE 2  
APPLIES FOR ALL VEHICLE/  
ROOF COMBINATIONS.**

<b>INSTR. NUMBER : 66850</b>  <b>PART NUMBER : URGBK</b>  <b>PART •</b> <b>DESC. • UTILITY,MNT BKT KT,RAIL</b>	<b>PG: 1</b>	<b>REV: D</b>	<b>ITEM NO.</b>	<b>PART NUMBER</b>	<b>DESCRIPTION</b>	<b>URMBK4W</b>	<b>URMBK2W</b>
			1	65123-W	UTILITY,FT MOUNT ARM,ST,W	4	2
			2	63852-W	UTILITY, MOUNTING BRKT, W	4	2

-PART NUMBERS WITH "-W" SUFFIX ARE PAINTED WHITE  
-**FOR BLACK MOUNTING KITS, REPLACE "-W" PARTS WITH "-B" PARTS**

**NOTE: THIS INSTRUCTION IS VALID FOR THE FOLLOWING KITS:**

- URMBK4W
- URMBK4B
- URMBK2W
- URMBK2B



**TOOLS NEEDED:**

- DRIVE RATCHET
- IMPACT DRIVER
- 3/16" SOCKET
- 1/2" SOCKET
- 1/2" WRENCH
- TAPE MEASURE

**GET TO KNOW THE VEHICLE** - AT THE BEGINNING OF ANY INSTALLATION, CHECK THE LOCATION OF THE FUEL TANK, FUEL LINES, BRAKE LINES, HIGH VOLTAGE BATTERIES AND WIRING HARNESSES TO AVOID INJURY OR PROPERTY DAMAGE FROM TOOL CONTACT.

**SEAL ALL EXTERIOR HOLES** - ALL INSTALLATION HOLES SHOULD BE SEALED WITH BUTYL TAPE OR SILICON TO PREVENT WATER AND EXHAUST GASES FROM ENTERING THE VEHICLE.

**CONTROL DRILL DEPTH** - TO AVOID DAMAGE TO THE VEHICLE, USE A DRILL STOP OR CLEARED STEP BIT WHEN DRILLING INSTALLATION HOLES.

**ALWAYS ADD PRIMER** - WHEN ADDING INSTALLATION HOLES BE SURE TO USE A SELF-ETCHING PRIMER TO PREVENT CORROSION, FASTENER FAILURE AND INJURY.

**MOUNTING POINTS MUST HAVE METAL-TO-METAL CONTACT** - USE PROVIDED MOUNTING SPACERS TO ACCOMMODATE FOR VEHICLE FEATURES, CARPET OR SUBFLOORS.

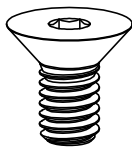
**PROVIDE CLEARANCE FOR SPACERS** - IF THE INSTALLATION VEHICLE CONTAINS A CARPET OR SUBFLOOR, USE A 1-3/16" DIAMETER CARPET CUTTER (P/N: 31183-0) AT ALL MOUNTING LOCATIONS TO OPEN UP ROOM FOR SPACERS.

**CHECK SPACER ORIENTATION** - BE SURE THAT THE INDENT IN THE SPACER COVERS THE PLUSNUT HEAD; THIS ENSURES THE MOST METAL-TO-METAL CONTACT AND REDUCES VIBRATION.

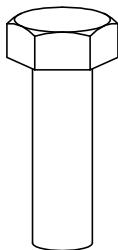
**PLUSNUT INSTALLATION** - A PLUSNUT GUN IS RECOMMENDED FOR PLUSNUT INSTALLATION FOR ITS PRODUCTION SPEED. HOWEVER, A PLUSNUT SETTING TOOL CAN ALSO BE USED (P/N: 22200-0).

**THRU-BOLT CLEARANCE** - WHEN USING A THRU-BOLT AT ANY MOUNTING LOCATION, BE SURE THAT YOUR HOLE HAS 1/16" CLEARANCE.

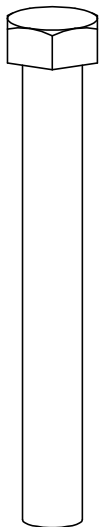
**FASTENERS AND HARDWARE USED**  
**BAG REFERENCE: BAG66848**



**FAS0858**  
**5/16-18X.63**  
**FHH SCREW**  
**QTY: 8**



**FAS0597**  
**5/16-18X1.0 SS**  
**HH SCREW**  
**QTY: 8**



**FAS0243**  
**5/16-18X2.5 SS**  
**HH SCREW**  
**QTY: 4**



**FAS0857**  
**5/16 SS WASHER,**  
**LOCK EXT CS**  
**QTY: 8**



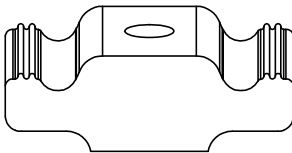
**FAS0588**  
**5/16 SS**  
**SPLIT WASHER**  
**QTY: 8**



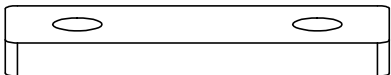
**FAS0552**  
**5/16 SS**  
**FLAT WASHER**  
**QTY: 12**



**FAS0861**  
**5/16-18 SS**  
**HH FLG NUT**  
**QTY: 4**



**63490**  
**RAIL SLIDE,**  
**1"**  
**QTY: 8**



**68042**  
**PROFILE FOOT**  
**MOUNTING PLATE**  
**QTY: 4**

**PAGE INTENTIONALLY LEFT BLANK**

**STEP 1 - ASSEMBLE MOUNTING ARMS TO CROSSBOW**

CHECK TABLE 1-3 IN INSTRUCTION 68895 FOR ADDITIONAL ACCESSORY SLIDE INSTALLATION BEFORE INSTALLING MOUNTING BRACKETS (ALL A.2 ITEMS SHOULD BE COMPLETELY ASSEMBLED FIRST!)

**STEP 1.1**

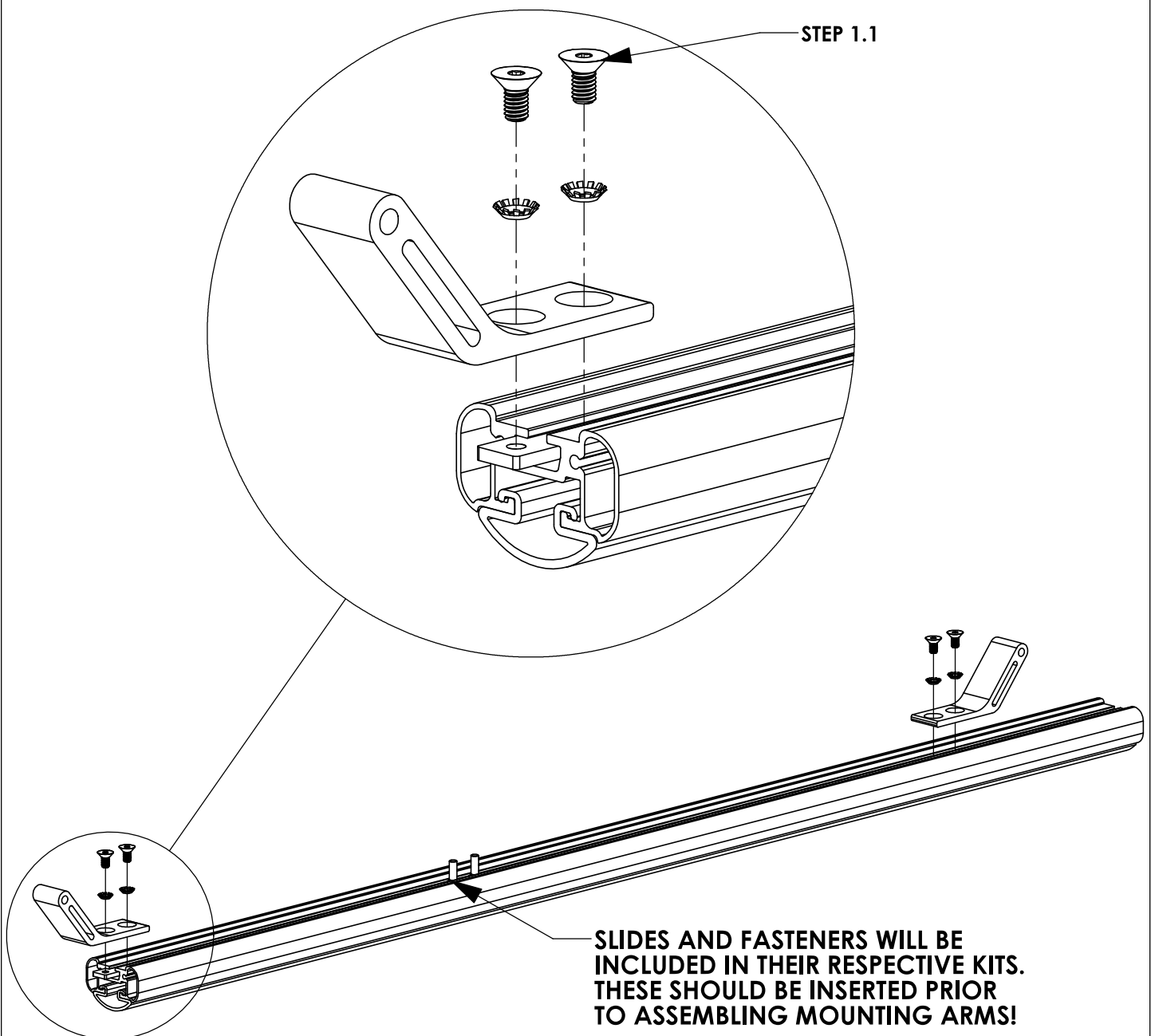
**LOOSELY ASSEMBLE  
UNTIL AFTER STEP 3**

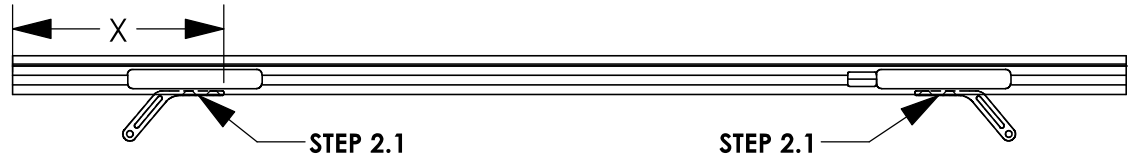
(2) FAS0857, (2)  
FAS0858, 68042

(02 PLACES PER  
CROSSBOW)  
3/16" ALLEN

**ATTENTION!**

IF INSTALLING A GRIP-LOCK ON A PICKUP TRUCK TOPPER, ASSEMBLE MOUNTING ARMS FACING OUTWARD FOR THAT SIDE OF THE RACK



**STEP 2 - SECURE CROSSBOW****FULL SIZE VANS****CENTER CROSSBOW ON MOUNTING BRACKETS**

**STEP 2.1**  
**FULLY TIGHTEN**  
**FROM STEP 1.1**

(04 PLACES PER  
CROSSBOW)  
3/16" ALLEN

**VEHICLE PLATFORM****DIMENSION "X" (in.) -  
58" CROSSBOW****DIMENSION "X" (in.) -  
68" CROSSBOW****FORD TRANSIT**

6 5/8"

11 5/8"

**RAM PROMASTER**

6"

11"

**NISSAN NV**

4 7/8"

9 7/8"

**MERCEDES SPRINTER  
(LOW ROOF)**

4 5/8"

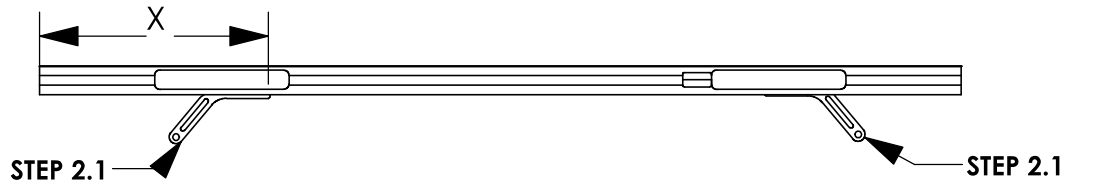
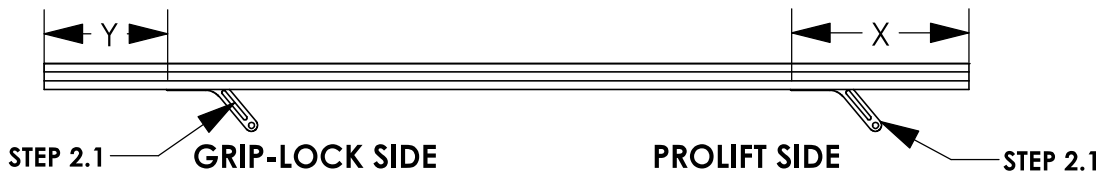
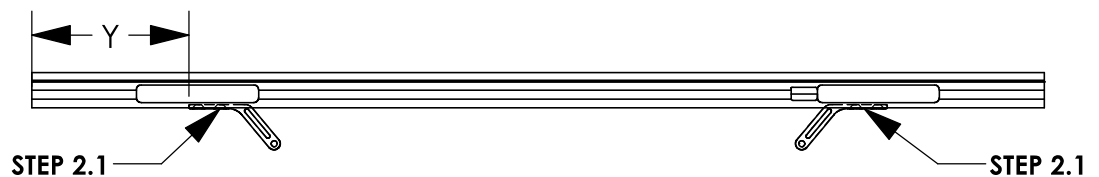
9 5/8"

**MERCEDES SPRINTER  
(HIGH ROOF)**

8 1/8"

13 1/8"

**DIMENSION WILL  
VARY BASED ON  
ROOF RAIL  
PLACEMENT ON  
TOPPER**

**PICKUP TRUCK TOPPERS****FEET ORIENTATION FOR DUAL PROLIFT SHOWN****FEET ORIENTATION FOR COMBO RACK SHOWN****FEET ORIENTATION FOR DUAL GRIP-LOCK SHOWN**

**MOUNTING FEET  
FOR GRIP LOCK SIDE  
OF COMBO RACK  
WILL FACE  
OUTWARD FROM  
ROOF CENTERLINE  
ON TOPPER**

**CROSSBOW LENGTH****DIMENSION "X" (in.) -  
PROLIFT****DIMENSION "Y" (in.) -  
GRIPLOCK****48" (PROLIFT)**

MINIMUM 10 1/8"

N/A

**53" (COMBO)**

MINIMUM 10 1/8"

MAX 7 1/8"

**58" (GRIP-LOCK)**

N/A

MAX 7 1/8"

**NOTE - THESE DIMENSIONS ARE APPROXIMATE AND WILL VARY  
SLIGHTLY WITH ANY TOLERANCE IN THE BUILD OF THE VEHICLE**



**STEP 3 - ASSEMBLE LOWER MOUNTING FOOT TO ROOF RAIL****STEP 3.1****FULLY TIGHTEN**

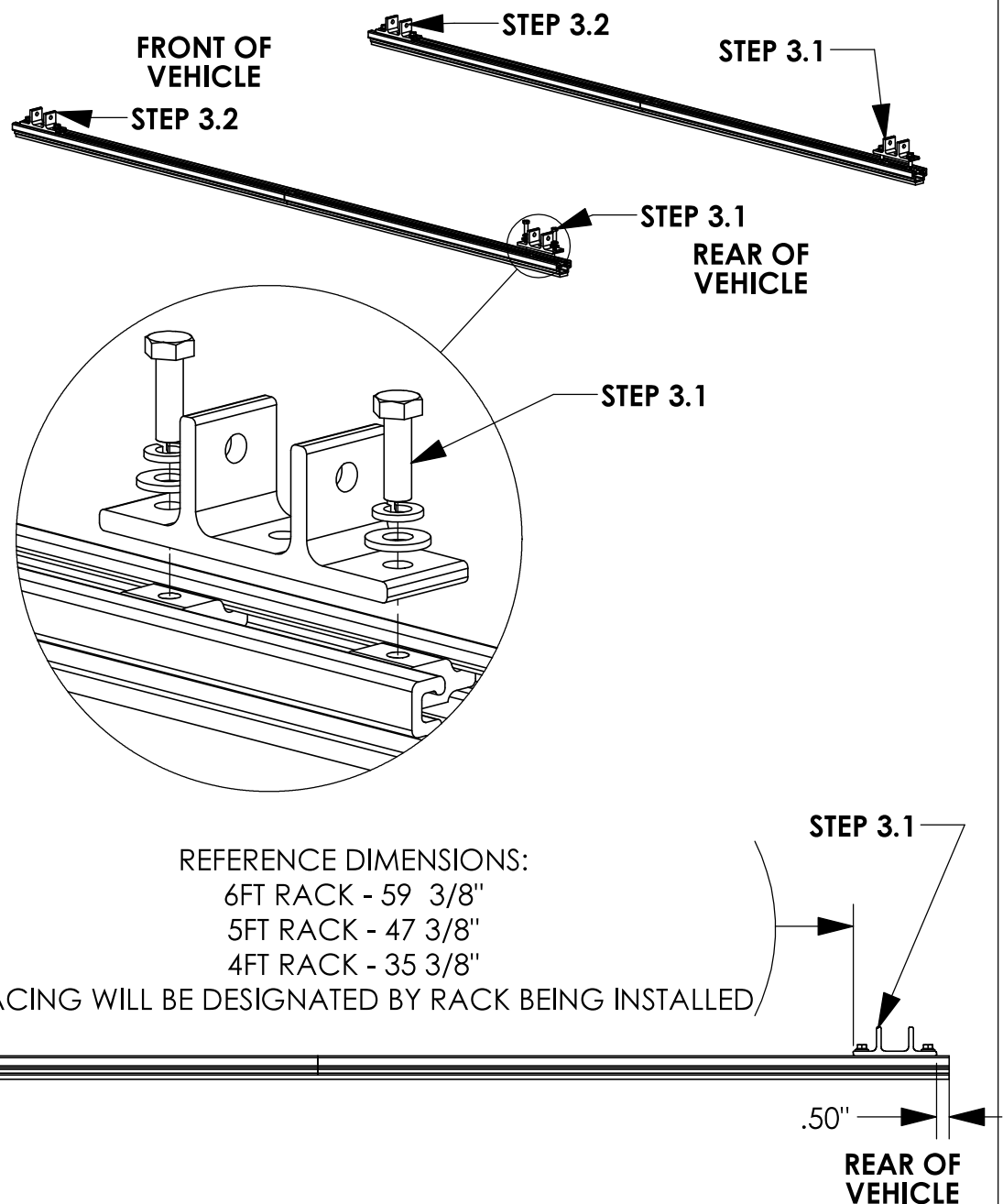
FAS0597, FAS0552,  
FAS0588, 63490 ON  
REAR MOUNTING FEET

(02 PLACES PER  
MOUNTING FOOT)  
1/2" SOCKET

**STEP 3.2****LEAVE LOOSE UNTIL  
AFTER STEP 4**

FAS0597, FAS0552,  
FAS0588, 63490 ON  
FRONT MOUNTING  
FEET

(02 PLACES PER  
MOUNTING FOOT)  
1/2" SOCKET

**CROSSBOW POSITIONING NOTES:****HD UTILITY RACK -**

REAR CROSSBOW - REARWARD AS POSSIBLE

FRONT CROSSBOW- POSITION TO BEST FIT END USER'S PRODUCT

**GRIP LOCK/PROLIFT LADDER RACKS -**

1/2" FROM END OF RAIL UNLESS OTHERWISE STATED IN RESPECTIVE  
INSTRUCTION FOR CROSSBOW PLACEMENT.

**STEP 4 - ASSEMBLE MOUNTING BRACKETS TO MOUNTING ARMS**

**BEFORE PROCEEDING WITH THIS STEP FINISH ASSEMBLING ACCESSORIES ONTO RACK. (IE GRIP LOCK, PROLIFT, ETC)**

**STEP 4.1****FULLY TIGHTEN**

FAS0243, FAS0552,  
FAS0861

(02 PLACES PER  
CROSSBOW)

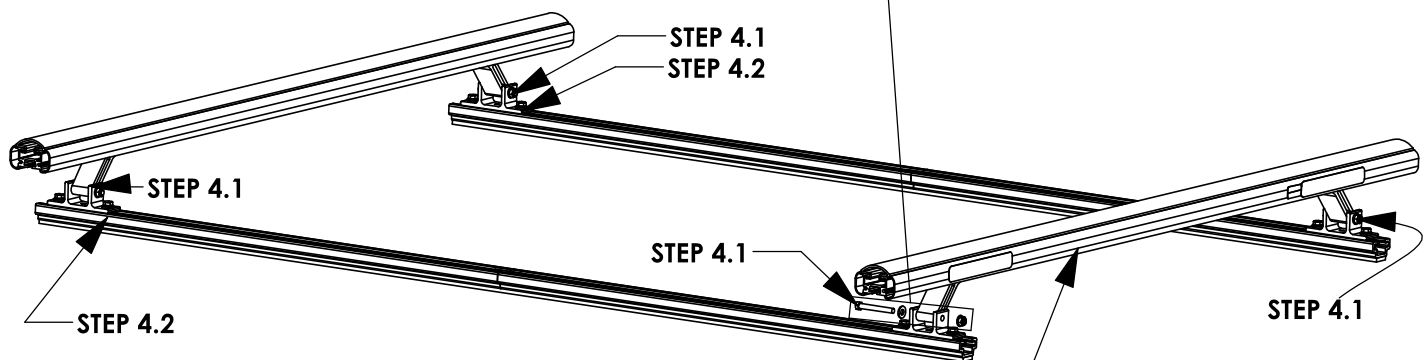
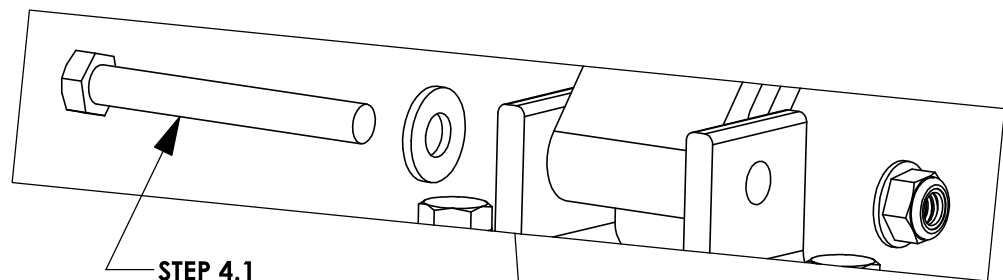
1/2" SOCKET  
1/2" WRENCH

**STEP 4.2****FULLY TIGHTEN**

FAS0597, FAS0552,  
FAS0588, 63490 ON  
FRONT MOUNTING  
FEET

(02 PLACES PER  
MOUNTING FOOT)

1/2" SOCKET



**NOTE ORIENTATION OF  
LABELS ON CROSSBOW**

**REFERENCE - NO ACCESSORIES SHOWN**

## STEP 5 - ADJUST MOUNTING BRACKET LOCATION IF NECESSARY

### CROSSBOW POSITIONING NOTES:

#### HD UTILITY RACK -

REAR CROSSBOW - REARWARD AS POSSIBLE

FRONT CROSSBOW- POSITION TO BEST FIT END USER'S PRODUCT

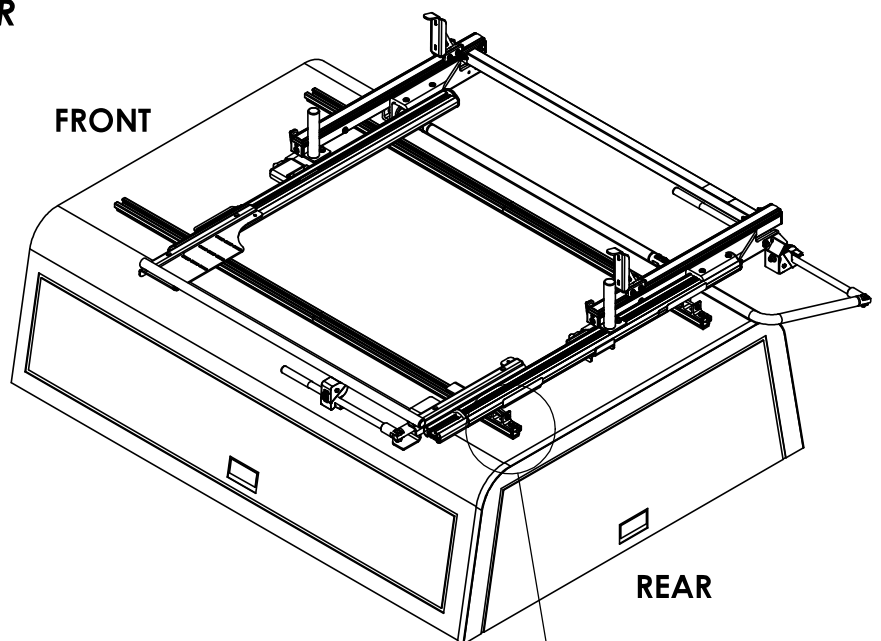
#### GRIP LOCK/PROLIFT LADDER RACKS -

1/2" FROM END OF RAIL UNLESS OTHERWISE STATED IN RESPECTIVE INSTRUCTION FOR CROSSBOW PLACEMENT.

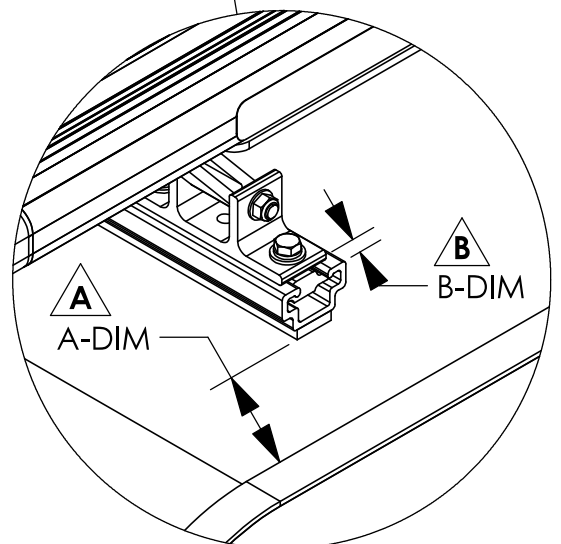
### 6' ARE TOPPER / 8' LEER TOPPER

**A** OPTIMAL RAIL KIT POSITION:  
TOPPER ROOF RAIL KIT END TO BE  
A-DIM FROM BLACK TOPPER TRIM

**B** UTILITY MOUNTING BRACKET:  
REAR MOUNTING BRACKETS WILL  
BE B-DIM FROM THE END OF THE  
ROOF RAIL KIT



TOPPER/ DIMENSION	6' ARE TOPPER	8' LEER TOPPER
A-DIM	3.00"	1.00"
B-DIM	0.50"	0.50"



#### NOTE:

IF RAILS HAVE BEEN PREVOIUSLY INSTALLED, LOOSEN TOPPER RAIL BRACKET RAIL SLIDES AND ADJUST TO MEET DESIRED POSITIONING

INSTALLATION IS COMPLETE!! MAKE SURE ALL FASTENERS ARE TIGHTENED

**FORD TRANSIT LOW ROOF  
POSITION UPDATES PER  
DEVIATION #1172 ON NEXT  
TWO PAGES**

INSTR.  
NUMBER : **INS76139**

PG: **1** REV: **A**

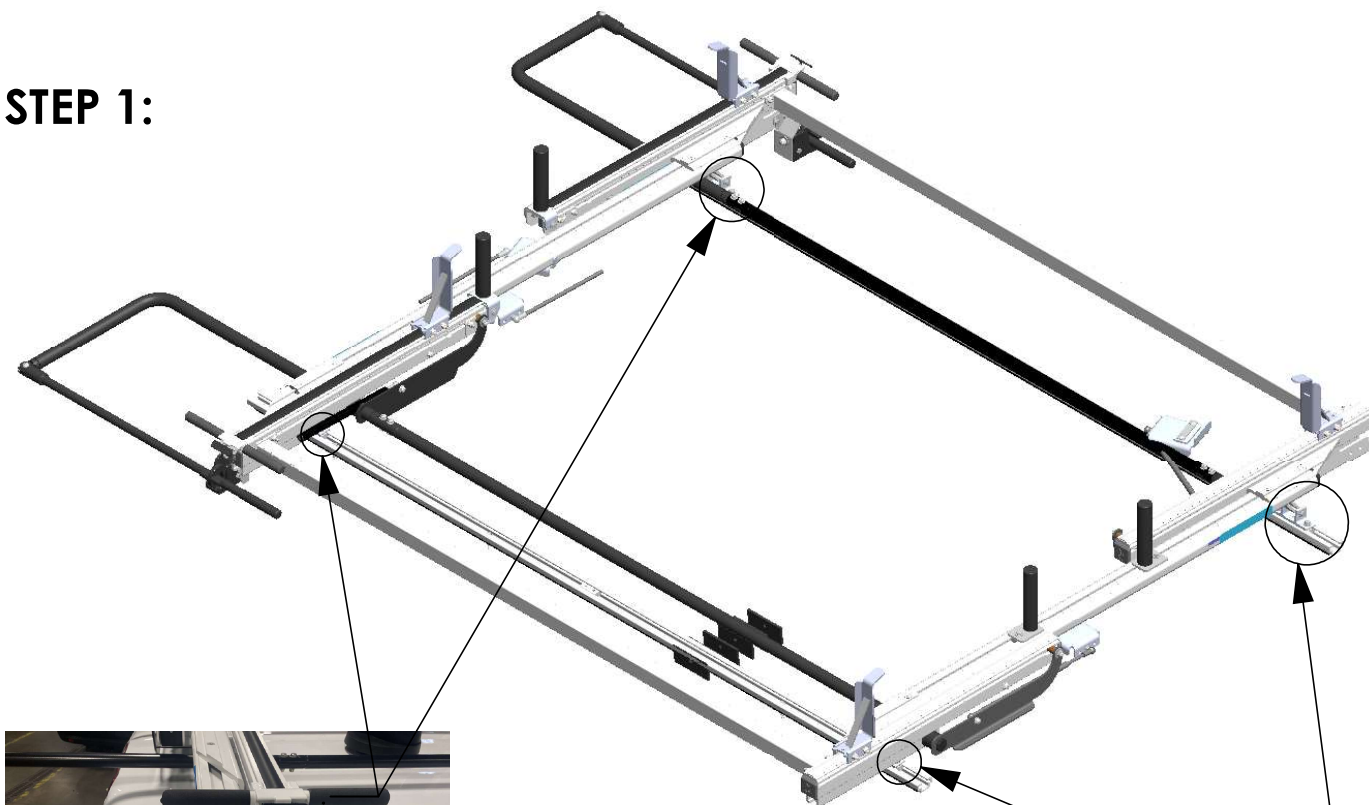
**TOOLS NEEDED:**

- SOCKET WRENCH  
(OR 1/2" WRENCH)
- 1/2" SOCKET
- TAPE MEASURE

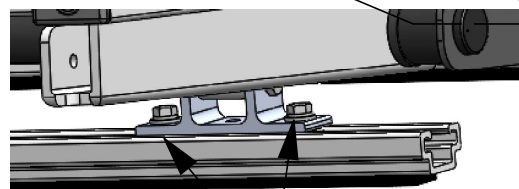
(POWER TOOLS NOT  
RECOMMENDED)

## ProLift LADDER RACK OPTIMAL ADJUSTMENT INSTRUCTIONS:

### STEP 1:



**Step 1.1**  
**LOOSEN 5/16"**  
**BOLTS**  
**(2 PLACES, BOTH**  
**REAR CORNERS)**  
**1/2 WRENCH OR**  
**1/2 SOCKET**

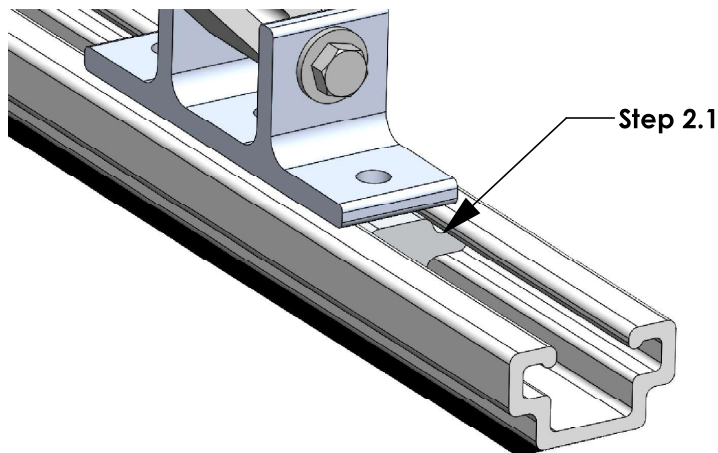


**Step 1.2**  
**FULLY REMOVE**  
**5/16" BOLTS**  
**AND WASHERS**  
**(2 PLACES, BOTH**  
**FRONT**  
**CORNERS)**  
**1/2 WRENCH OR**  
**1/2 SOCKET**

**SAVE FASTENERS**

**STEP 2 & 3 - CHANGING POSITION OF LADDER RACK**

**Step 2.1**  
**WITH BOLTS**  
**REMOVED, MOVE**  
**FRONT FOUR SLIDES**  
**(2 PER CORNER) TO**  
**DESIRED LOCATION**



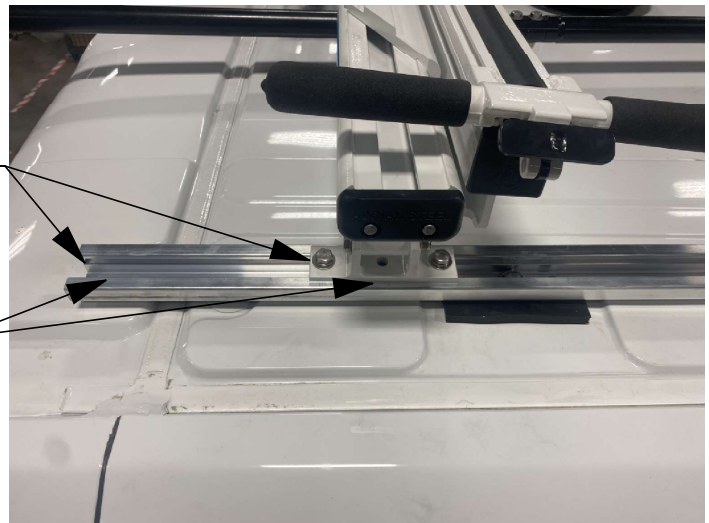
FRONT



**BEFORE ADJUSTING**  
**POSITION, CHECK**  
**WIRING TO ENSURE**  
**ELECTRICAL**  
**COMPONENTS DO**  
**NOT INTERFERE WITH**  
**ADJUSTMENT**

**Step 2.2**  
**ONCE ALL BOLTS**  
**ARE LOOSENED,**  
**SLIDE LADDER**  
**RACK FORWARD**  
**TO DESIRED**  
**LOCATION.**  
**\*ALIGN WITH**  
**FRONT SLIDES\***  
**(CONFIRM WITH**  
**TAPE MEASURE)**

7.5"  
 Step 2.2



REAR

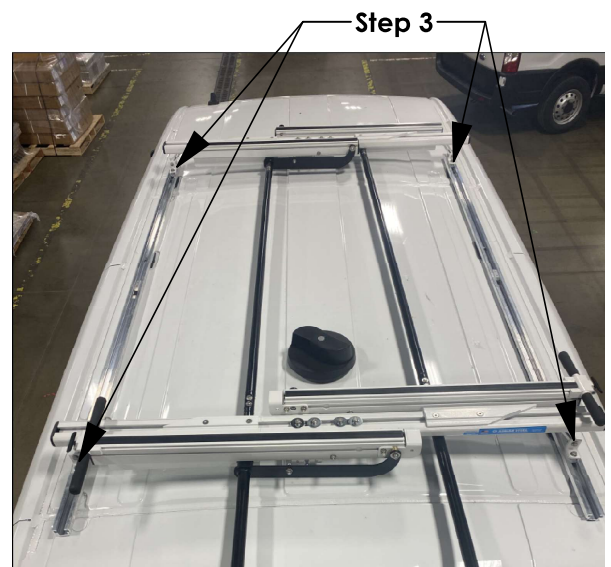
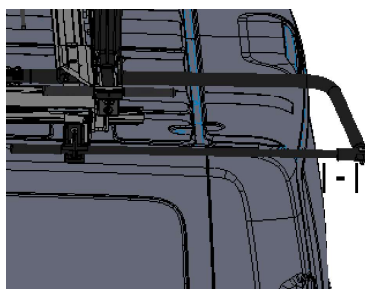
**Step 2.3**  
**CHECK**  
**CLEARANCE OF**  
**REAR DROP-**  
**DOWN HANDLE,**  
**(TARGET MINIMUM**  
**CLEARANCE OF 2"**  
**FOR BOTH**  
**HANDLES)**



Step 2.3

**Step 3**  
**RE-INSERT FRONT**  
**FASTENERS SAVED**  
**FROM STEP 1.2.**  
**FULLY TIGHTEN ALL**  
**BOLTS TO LOCK IN**  
**PLACE.**

**1/2" SOCKET OR**  
**WRENCH**

**ADJUSTMENT COMPLETE**



## 2-Crossbar Kit, 58", Black, Minivan



PRODUCT WEIGHT  
**16.1 LBS**

CROSSBOW LENGTH X  
HEIGHT

**59" x 2"**

CAPACITY

**REFER TO OEM'S  
RECOMMENDED LOAD  
RATING**

COLOR

**BLACK**

CATALOG NUMBER

**2BARCB**

### PRODUCT FEATURES

Aluminum base 2-crossbow kit for PROFILE™ HD Utility, Grip-Lock, ProLift, or combo ladder racks. Works with all compact van platforms for each respective wheelbase and Ford Transit Ship Thru. Works with and without OEM specific rail kit and generic mounting bracket kits.

Optional uprights and conduit kits available.

Please refer to OEM specific mounting kit or rail kit for additional information on compatible accessories.

# INSTALLATION GUIDE FOR PROFILE™ SERIES LADDER RACKS

INSTRUCTION #:  
**68895**

REV:  
**B**

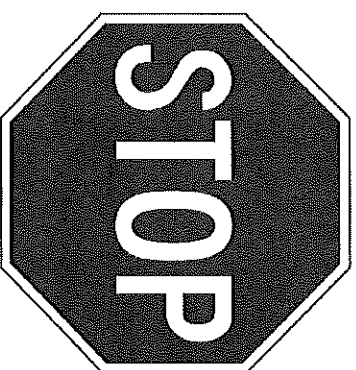
THIS INSTRUCTION PROVIDES A GENERAL GUIDE OF INSTALLATION SEQUENCE FOR ALL PROFILE™ SERIES LADDER RACKS. PLEASE ENSURE ALL ACCESSORIES ARE INSTALLED PER TYPE OF RACK BEFORE PROCEEDING TO NEXT PAGE.

REFERENCE THIS INSTRUCTION THROUGHOUT THE ENTIRETY OF YOUR INSTALL TO PREVENT ACCESSORIES BEING INSTALLED INCORRECTLY/OUT OF SEQUENCE!

STEPS 21 - 81 ON PAGE 3 IS THE RECOMMENDED ASSEMBLY SEQUENCE FOR A FULL TABLE ASSEMBLY BEFORE INSTALLING ON THE ROOF OF THE VEHICLE.

STEPS 2R - 8R ON PAGE 4 IS AN ALTERNATE ASSEMBLY SEQUENCE TO INSTALL THE RACK ON THE VEHICLE ROOF AS IT IS BUILT.

PLEASE SELECT THE ASSEMBLY SEQUENCE THAT BEST WORKS FOR YOU!



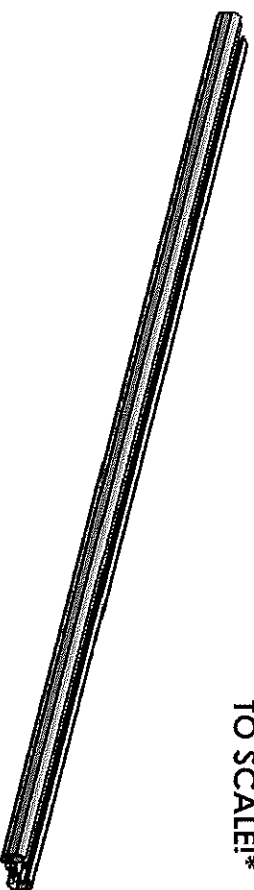
## ASSEMBLY STEPS:

**STEP 1A. SUB-ASSEMBLE EACH CROSSBOW WITH DESIRED ACCESSORIES FOR SECTIONS A.1 & A.2.**

*INSTRUCTIONS FOR EACH KIT CAN BE FOUND IN THEIR RESPECTIVE CARTON!*

TOP OF CROSSBOW  
\*IMAGE NOT TO SCALE!

BOTTOM OF CROSSBOW



**TABLE 1**

### TOP OF CROSSBOW

#### COMPONENTS TO INSTALL

HD UTILITY

- CONDUIT KIT OR BEACON

Grip-Lock

- CONDUIT KIT OR BEACON

ProLift

- CONDUIT KIT OR BEACON

### BOTTOM OF CROSSBOW

#### COMPONENTS TO INSTALL

HD UTILITY

- LADDER STOP, STROBE BRACKET, AND/OR REAR ROLLER

Grip-Lock

- Grip-Lock SUB-ASSEMBLY

ProLift

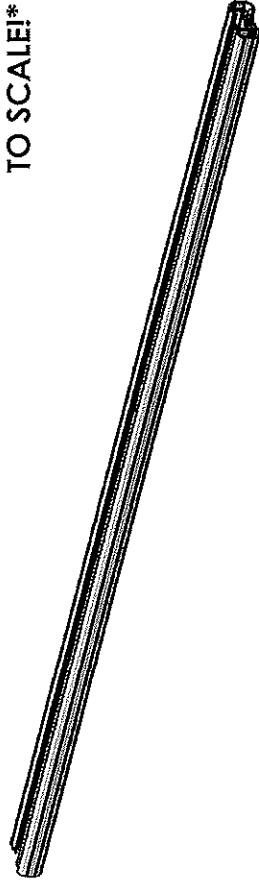
- DAMPER BRACKET



**STEP 1B. SUB-ASSEMBLE EACH CROSSBOW WITH DESIRED ACCESSORIES FOR SECTIONS B.1 & B.2. INSTRUCTIONS FOR EACH KIT CAN BE FOUND IN THEIR RESPECTIVE CARTON!**

**TOP OF CROSSBOW**

**\*IMAGE NOT TO SCALE!\***



**BOTTOM OF CROSSBOW**

**TABLE 2**

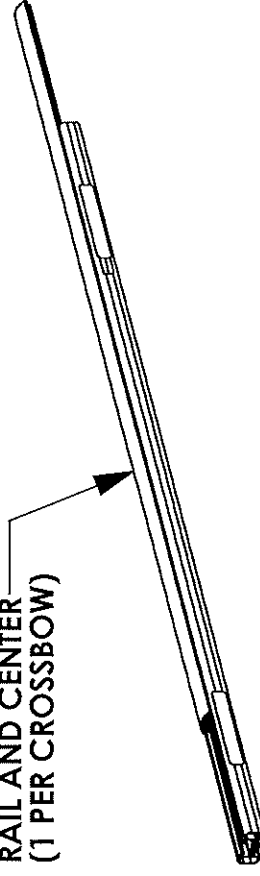
TOP OF CROSSBOW	
	COMPONENTS TO INSTALL
B.1	HD UTILITY - WEAR STRIP (MODIFY IF NECESSARY, TABLE 3)
	Grip-Lock - WEAR STRIP (MODIFY IF NECESSARY, TABLE 3)
	ProLift - INNER STOP POST
BOTTOM OF CROSSBOW	
	COMPONENTS TO INSTALL
B.2	HD UTILITY - MOUNTING BRACKETS
	Grip-Lock - MOUNTING BRACKETS
	ProLift - MOUNTING BRACKETS

**ALTER WEAR STRIP AND INSTALL ON CROSSBOW (IF APPLICABLE)! REFERENCE TABLE 3 BELOW FOR WEAR STRIP ALTERATION INSTRUCTIONS!**

**TABLE 3**

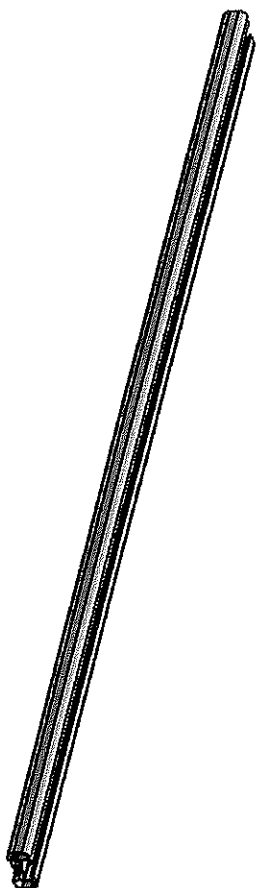
ADDED ACCESSORIES	ALTERATION FOR WEAR STRIP
4" UPRIGHT***	REMOVE 2" FROM END OF WEAR STRIP
4" PVC CONDUIT KIT	REMOVE 7.25" FROM CENTER OF WEAR STRIP
6" PVC CONDUIT KIT	REMOVE 9.50" FROM CENTER OF WEAR STRIP
ALUMINUM BOX CONDUIT KIT	REMOVE 13.25" FROM CENTER OF WEAR STRIP
BEACON	REMOVE 4" FROM CENTER OF WEAR STRIP
ProLift (SINGLE SIDE)	CUT WEAR STRIP IN HALF, DO NOT INSTALL ON ProLift SIDE
ProLift (DUAL SIDE)	DO NOT INSTALL WEAR STRIP

**SLIDE WEAR STRIP INTO RAIL AND CENTER (1 PER CROSSBOW)**



**STEP 1C SUB-ASSEMBLE EACH CROSSBOW WITH  
DESIRED ACCESSORIES FOR SECTIONS C.1 & C.2**

**TOP OF CROSSBOW**  
**\*IMAGE NOT  
TO SCALE\***



**BOTTOM OF CROSSBOW**

**TABLE 4**

TOP OF CROSSBOW		
COMPONENTS TO INSTALL		
	HD UTILITY	- 4" UPRIGHT
C.1	Grip-Lock	- N/A
	Prolift	- SLIDES FOR BASE EXTRUSION
BOTTOM OF CROSSBOW		
COMPONENTS TO INSTALL		
	HD UTILITY	- UPRIGHTS (6", 9", RATCHET)
C.2	Grip-Lock	- STROBES
	Prolift	- STROBES

**ASSEMBLY STEPS (FULL BENCH ASSEMBLY):**

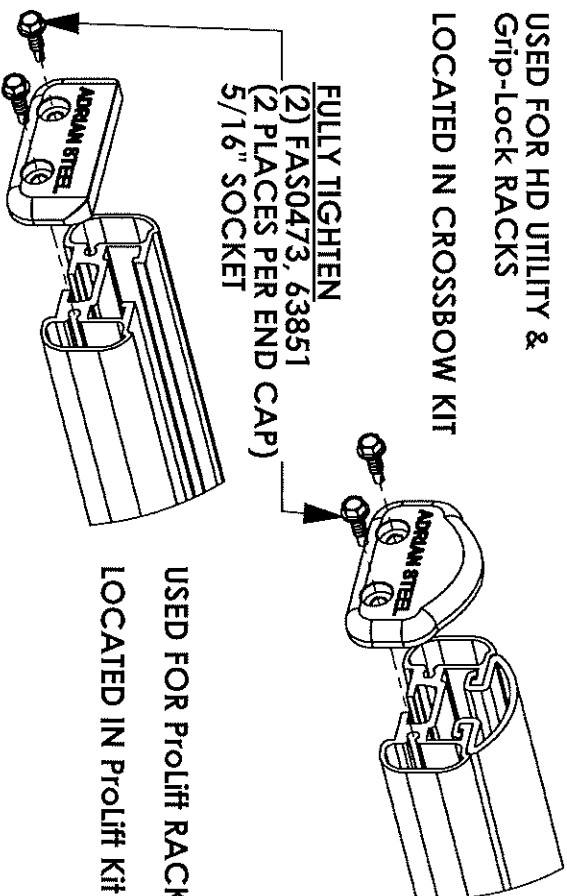
- 2T. ADD DRIVELINES (IF INSTALLING Prolift)
- 3T. ADD HANDLES (IF INSTALLING Grip-Lock OR Prolift) AND DAMPERS (IF INSTALLING Prolift)
- 4T. ADD OUTER SUPPORT BARS (IF INSTALLING Grip-Lock OR Prolift)
- 5T. ADD STEP LADDER KIT (Grip-Lock OR Prolift ONLY)

- 6T. ASSEMBLE ENDS CAPS TO CROSSBOW

USED FOR HD UTILITY &  
Grip-Lock RACKS

LOCATED IN CROSSBOW KIT

FULLY TIGHTEN  
(2) FAS0473, 63851  
(2 PLACES PER END CAP)  
5/16" SOCKET



- 7T. INSTALL ROOF RAIL KIT ON VEHICLE ROOF OR BOTTOM MOUNTING BRACKETS

(ROOF RAIL KIT REQUIRED FOR Grip-Lock & Prolift  
OPTIONAL FOR HD UTILITY, NOT NEEDED FOR GM LADDER  
RACKS)

- 8T. MOUNT CROSSBOW SUB-ASSEMBLIES FROM STEP 1 TO  
VEHICLE/MOUNTING BRACKET, OR ROOF RAIL  
(LOOSE INSTALL)

**ALTERNATE ASSEMBLY METHOD!**  
**(ASSEMBLE ON VEHICLE ROOF):**

2R. INSTALL ROOF RAIL KIT ON VEHICLE ROOF OR BOTTOM MOUNTING BRACKETS

(ROOF RAIL KIT REQUIRED FOR Grip-Lock & ProLift, OPTIONAL FOR HD UTILITY, NOT NEEDED FOR GM LADDER RACKS)

3R. MOUNT CROSSBOW SUB-ASSEMBLIES FROM STEP 1 TO VEHICLE/MOUNTING BRACKET, OR ROOF RAIL (LOOSE INSTALL)

4R. ADD DRIVELINES (IF INSTALLING ProLift)

5R. ADD HANDLES (IF INSTALLING Grip-Lock OR ProLift) AND DAMPERS (IF INSTALLING ProLift)

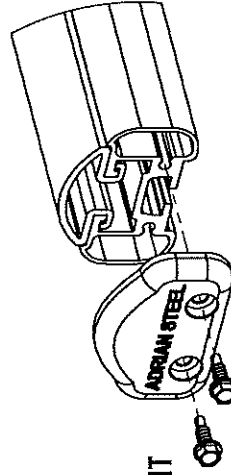
6R. ADD OUTER SUPPORT BARS (IF INSTALLING Grip-Lock OR ProLift)

7R. ADD STEP LADDER KIT (Grip-Lock OR ProLift ONLY!)

8R. ASSEMBLE END CAPS TO CROSSBOW

USED FOR HD UTILITY &  
Grip-Lock RACKS

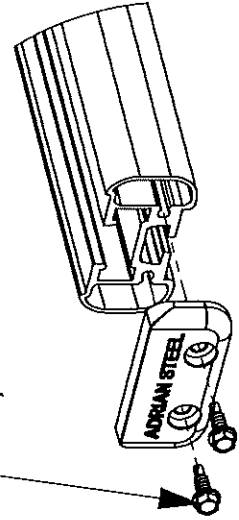
LOCATED IN CROSSBOW KIT



FULLY TIGHTEN

(2) FAS0473, 63851

(2 PLACES PER END CAP)  
5/16" SOCKET



USED FOR ProLift RACKS  
LOCATED IN ProLift Kit