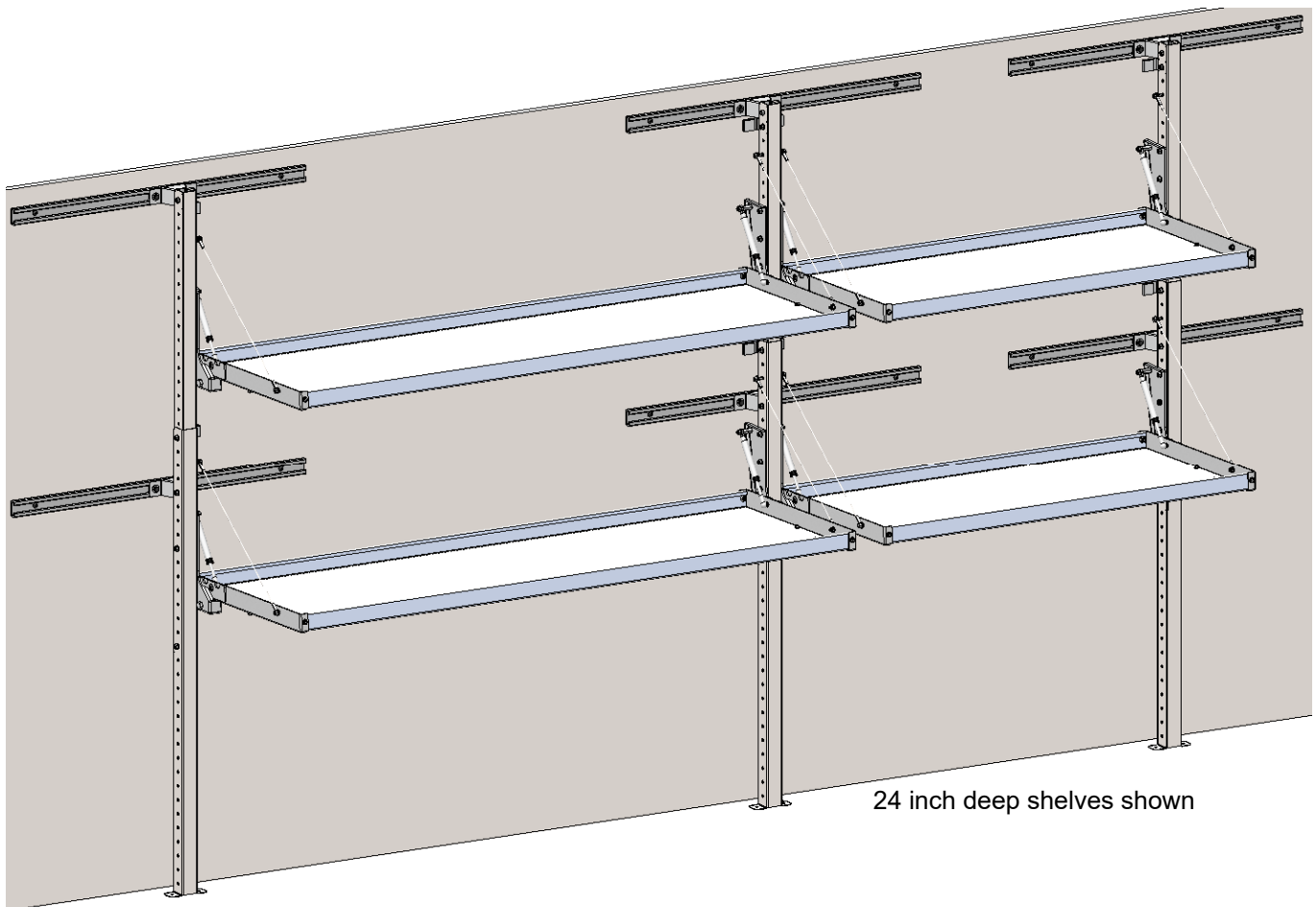


Introduction / Comments:

This folding shelving is intended to be installed in box trucks of varies roof heights and lengths. Additionally, there are separate kits for mounting into box truck walls with structural posts and fiberglass reinforced plywood. The first shelving unit is an independent assembly and each additional shelving unit shares the vertical post with the shelving unit next to it.

Note:

It is advised that all fasteners used in this assembly and installation should be checked for tightness at the following intervals: @ 2-weeks and again @ 6-weeks of operation. This preventive maintenance step must be completed to ensure your Product gives you long service life.



Folding Shelving for box trucks Assembly and install instructions

- PRECAUTIONS -



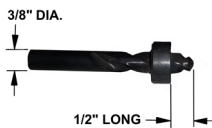
CAUTION
THE USE OF AIR IMPACT TOOLS CAN
OVER-TORQUE FASTENERS AND
CAUSE FASTENER FAILURE!



CAUTION
ALL INSTALLATION HOLES SHOULD BE SEALED
WITH SILICON OR BUTYL SEALANT TO PREVENT
EXHAUST FUMES FROM ENTERING THE VEHICLE!



DANGER
INSPECT FOR FUEL TANK, FUEL LINES, BRAKE LINES, HIGH
VOLTAGE BATTERIES AND ELECTRICAL LINES PRIOR TO
DRILLING TO AVOID DAMAGING CRITICAL VEHICLE SYSTEMS
OR INJURY TO INSTALLER DURING INSTALLATION PROCESS!



CAUTION
TO AVOID DAMAGING THE VEHICLE ALWAYS USE DRILL
STOPS WHEN DRILLING ANY INSTALLATION HOLES!
ADRIAN AVAILABLE PART #'S 31119-0 (3/8" X 1/2"
DEEP), 31121-0 (1/2" x 1/2" DEEP)



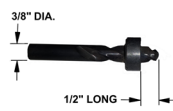
- IMPORTANT WARRANTY REQUIREMENTS -

1. SUBSTITUTING ADRIAN STEEL SPECIFIED FASTENERS FOR ASSEMBLY AND/OR INSTALLATION WILL VOID YOUR PRODUCT WARRANTY.
2. ALL HOLES DRILLED INTO VEHICLE SHOULD HAVE THE RAW METAL EDGES SEALED WITH A SELF-ETCHING PRIMER TO RESIST CORROSION AND POTENTIAL FASTENER POINT FAILURE.
3. ALL FASTENERS USED IN THE INSTALLATION OF THIS PRODUCT SHOULD BE TIGHTENED TO THE TORQUE(S) SPECIFIED IN THESE INSTRUCTIONS.
4. THESE INSTRUCTIONS SHOULD BE KEPT WITH THE VEHICLE.

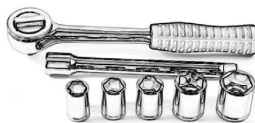
THE BASIC TOOLS NEEDED FOR MOST INSTALLATIONS



DRILL



DRILL BIT WITH
STOP



RATCHET, SOCKETS
AND/OR WRENCHES



SCREWDRIVERS



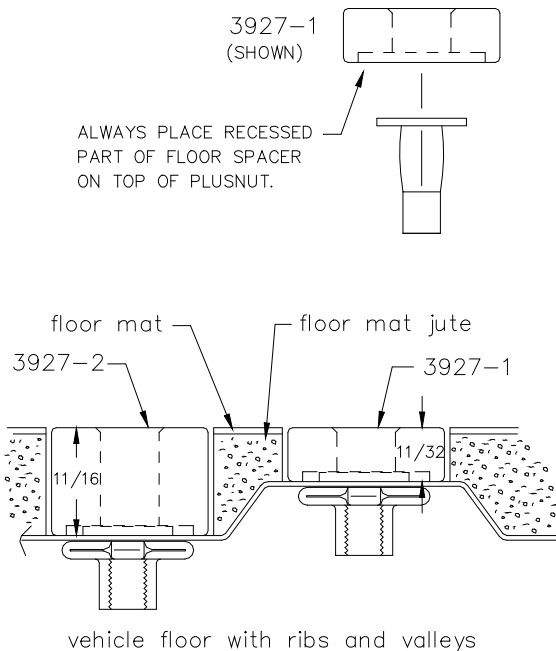
MEASURING TAPE

ADDITIONAL TOOLS MAY BE NEEDED FOR THIS INSTALLATION AND THEY WILL BE IDENTIFIED IN THE STEPS THAT FOLLOW.

If your vehicle contains carpet or a rubber floor mat you will need to prepare the mounting location. Position the product to be installed into the vehicle and once you are satisfied with the mounting locations, mark the mounting locations. Using a 1-3/16" diameter carpet cutter (P/N: 31183-0). Select the appropriate floor spacers as shown in the illustration. Set those aside for use later into the installation process. Using the correct drill bit size for the selected plusnut, drill the mounting holes in the vehicle sheet metal to prepare for installing the plusnuts.

If you are thru-bolting at any of the locations simply drill a hole that is 1/16" larger than the bolt size(s) for those locations.

Once you have drilled the holes into the vehicle, the raw metal edges should be sealed using a self-etching primer to resist corrosion and potential fastener point failure.



A PLUSNUT (RIVNUT) SETTING TOOL IS REQUIRED FOR PLUSNUT (RIVNUT) INSTALLATION . PLUS NUT SETTING TOOL CAN BE ORDERED THROUGH ADRIAN STEEL, OR USE AN AIR POWERED PLUSNUT SETTING GUN.

1/4-20UNC Plusnut (FAS0052) Use 3/8" dia. drill w/stop

FAS0080 SCREW, HXHD, 1/4-20UNCx2.00", G8

FAS0067 WASHER, FLAT, 1/4"ID

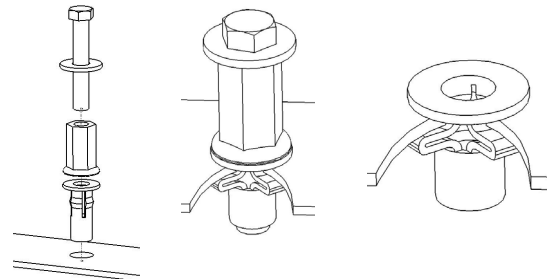
22200-0 PLUSNUT TOOL

5/16-18UNC Plusnut (FAS0091) Use 1/2" dia. drill w/stop

FAS0095 SCREW, HXHD, 5/16-18UNCx2.00", G8

FAS0086 WASHER, FLAT, 5/16"ID

22200-0 PLUSNUT TOOL

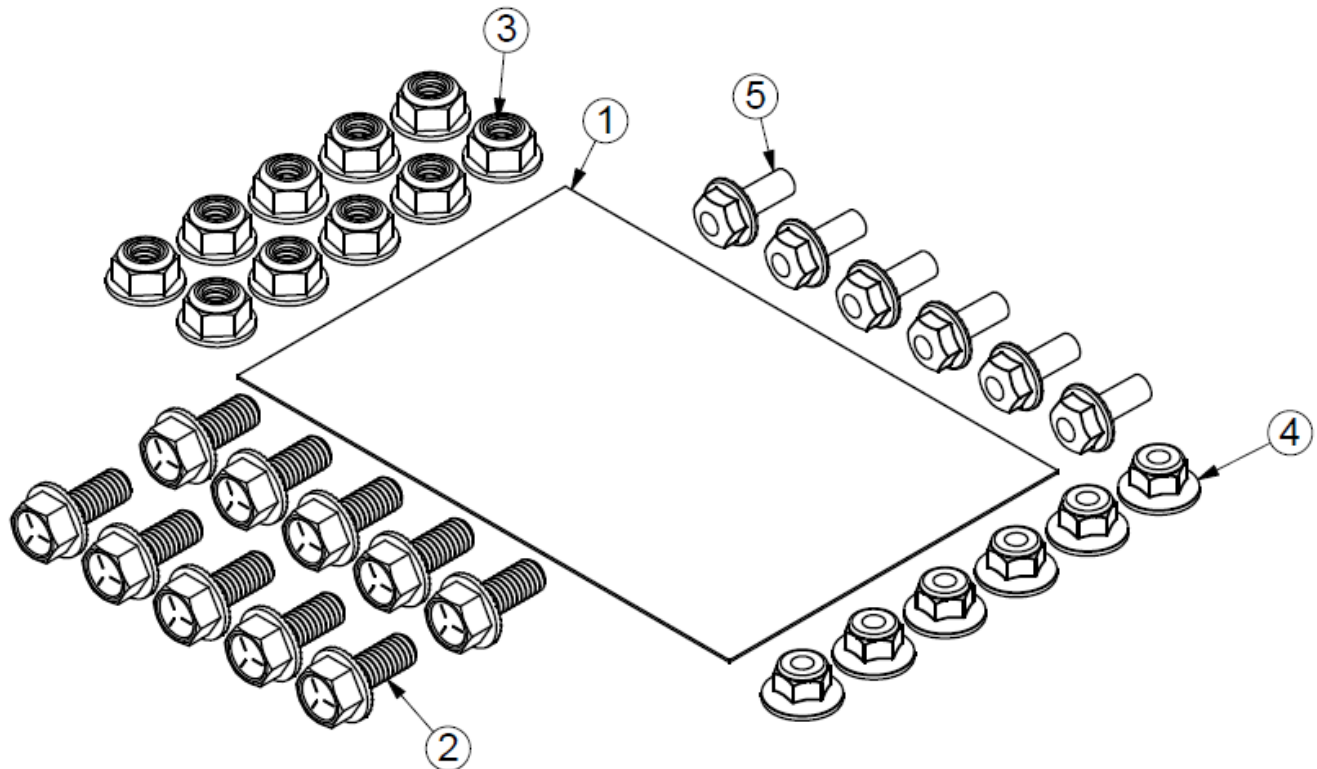


Place barrel of the plusnut body in sheet metal thru hole until flange is flush with sheet metal.

Using a 9/16" combination wrench of plusnut tool body and a second hand wrench, ratchet, or air tool, rotate the hex bolt head CW to draw plus nut flanges up (set the plusnut).

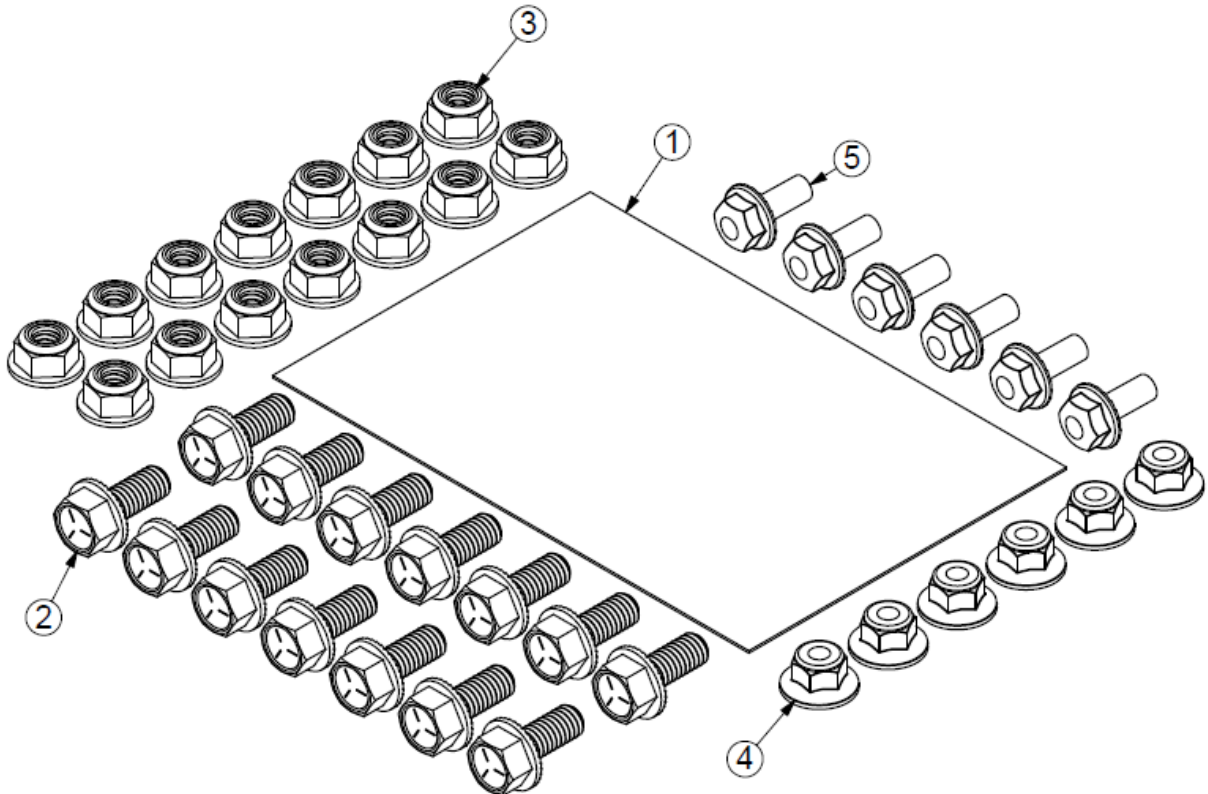
Installation and/or Assembly Fasteners
BAG63435, BAG FOR 20" FOLDING SHELVES
Use this bag to assemble 20 inch deep shelf kits

ITEM NO.	PART NUMBER	DESCRIPTION	QTY.
1	BAG0406-A	4" x 6" 3MIL AUTOBAG	1
2	FAS0438	SCREW,HFLNG 5/16-18X.75 ZP	10
3	FAS0440	NUT,HEX NLK FLG 5/16-18 - ZP	10
4	FAS0055	NUT,HEX NLK FLG 1/4-20 ZP	6
5	FAS0018	SCREW,HH SFLNG 1/4-20X.62 ZP	6



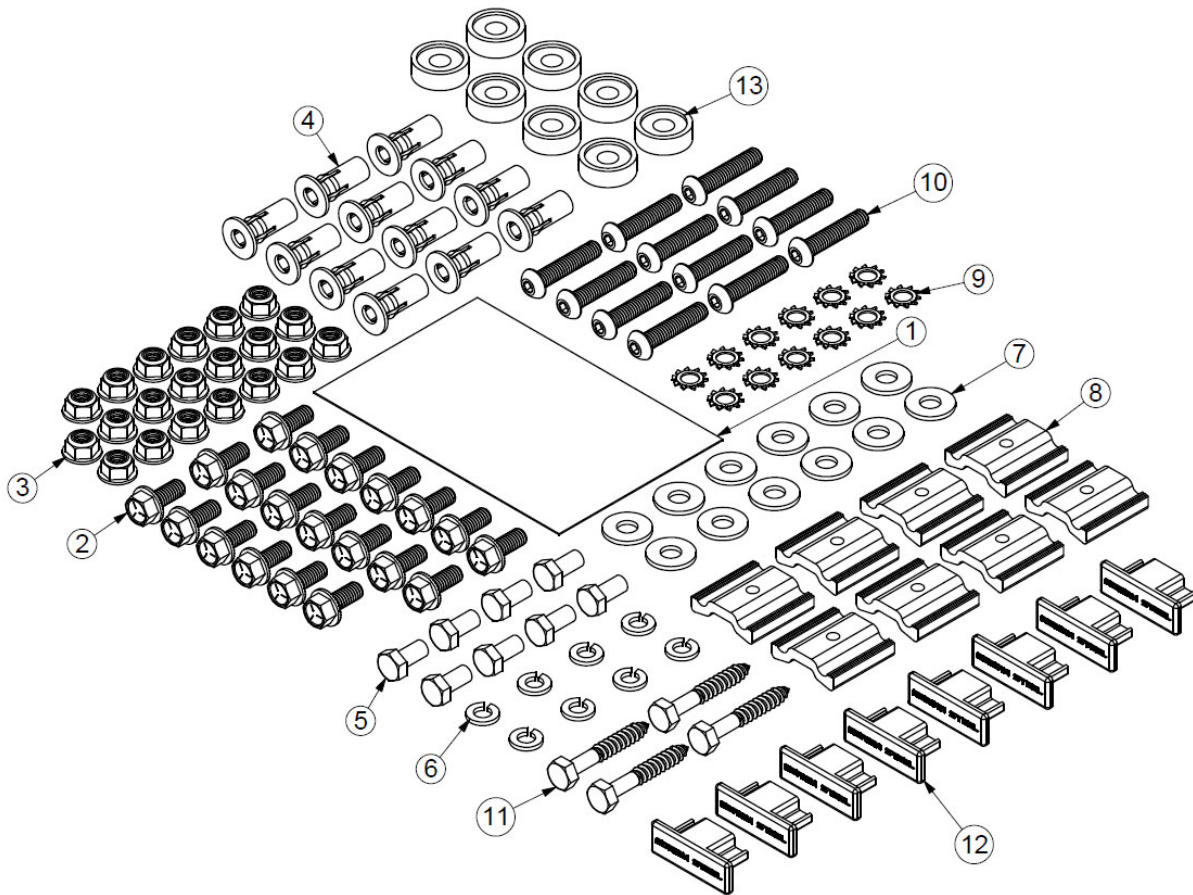
Installation and/or Assembly Fasteners
BAG63422, BAG FOR 24" FOLDING SHELVES
Use this bag to assemble 24 inch deep shelf kits

ITEM NO.	PART NUMBER	DESCRIPTION	QTY.
1	BAG0406-A	4" x 6" 3MIL AUTOBAG	1
2	FAS0438	SCREW,HFLNG 5/16-18X.75 ZP	14
3	FAS0440	NUT,HEX NLK FLG 5/16-18 - ZP	14
4	FAS0055	NUT,HEX NLK FLG 1/4-20 ZP	6
5	FAS0018	SCREW,HH SFLNG 1/4-20X.62 ZP	6



Installation and/or Assembly Fasteners
BAG63369, BAG FOR FSFMKBOX
Use this bag for full shelving units installed in Box trucks with structural post walls.

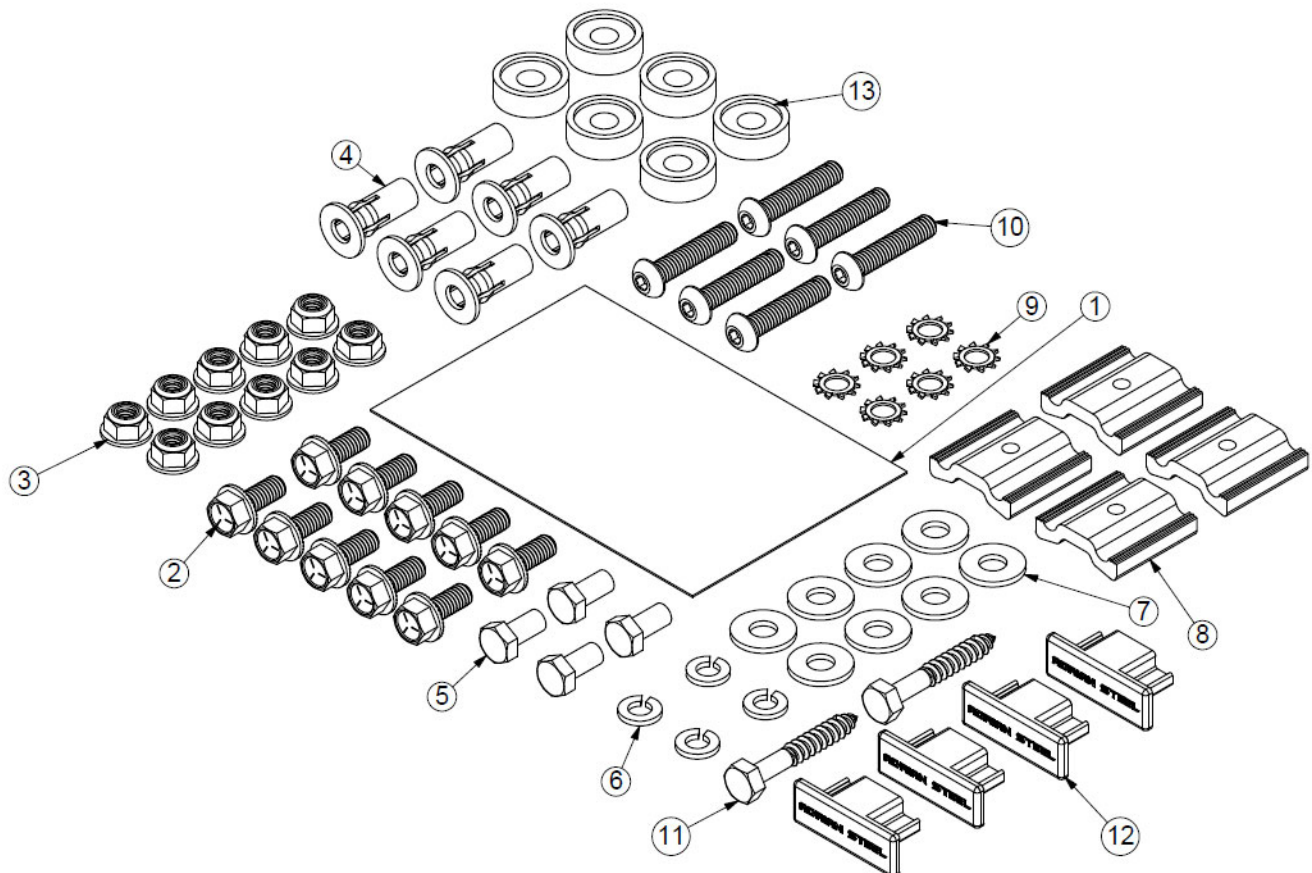
ITEM NO.	PART NUMBER	DESCRIPTION	QTY.
1	BAG0406-A	4" x 6" 3MIL AUTOBAG	1
2	FAS0438	SCREW,HFLNG 5/16-18X.75 ZP	20
3	FAS0440	NUT,HEX NLK FLG 5/16-18 - ZP	20
4	FAS0091	Plusnut, 5/16	12
5	FAS0165	SCREW,HH 5/16-18X.62 ZN	8
6	FAS0098	Washer, Lock, Split, 5/16, Zinc Plate	8
7	FAS0086	WASHER,FLAT USS 5/16 ZP	12
8	35335-0	SLIDE, 1.5" / AD RAIL	8
9	FAS0085	WASHER,LCK EXT 5/16 ZP	12
10	FAS0468	SCREW,BHCS 5/16-18X1.50ZN	12
11	FAS0467	BOLT,LAG 5/16-9X2.00 ZN	4
12	36496-0	END CAP	8
13	03927-1	SPACER,FLR,1010,11/32 ZP	8



Installation and/or Assembly Fasteners
BAG63423, BAG FOR FSFMKBOXA

Use this bag for add-on shelving units installed in Box trucks with structural post walls.

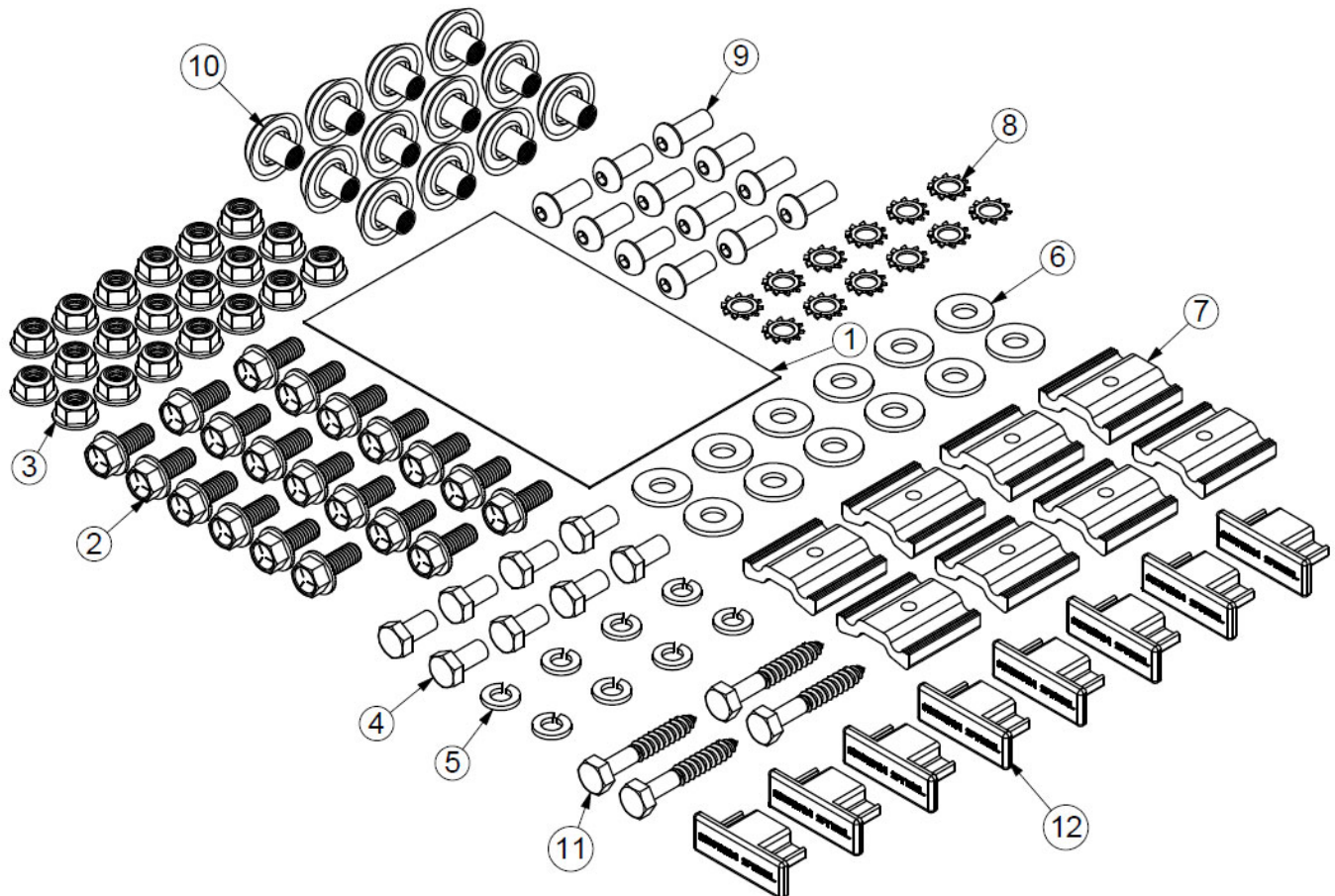
ITEM NO.	PART NUMBER	DESCRIPTION	QTY.
1	BAG0406-A	4" x 6" 3MIL AUTOBAG	1
2	FAS0438	SCREW,HFLNG 5/16-18X.75 ZP	10
3	FAS0440	NUT,HEX NLK FLG 5/16-18 - ZP	10
4	FAS0091	Plusnut, 5/16	6
5	FAS0165	SCREW,HH 5/16-18X.62 ZN	4
6	FAS0098	Washer, Lock, Split, 5/16, Zinc Plate	4
7	FAS0086	WASHER,FLAT USS 5/16 ZP	8
8	35335-0	SLIDE, 1.5" / AD RAIL	4
9	FAS0085	WASHER,LCK EXT 5/16 ZP	6
10	FAS0468	SCREW,BHCS 5/16-18X1.50ZN	6
11	FAS0467	BOLT,LAG 5/16-9X2.00 ZN	2
12	36496-0	END CAP	4
13	03927-1	SPACER,FLR,1010,11/32 ZP	6



Installation and/or Assembly Fasteners
BAG63424, BAG FOR FSFMRFP

Use this bag for full shelving units installed in Box trucks with fiberglass reinforced plywood walls.

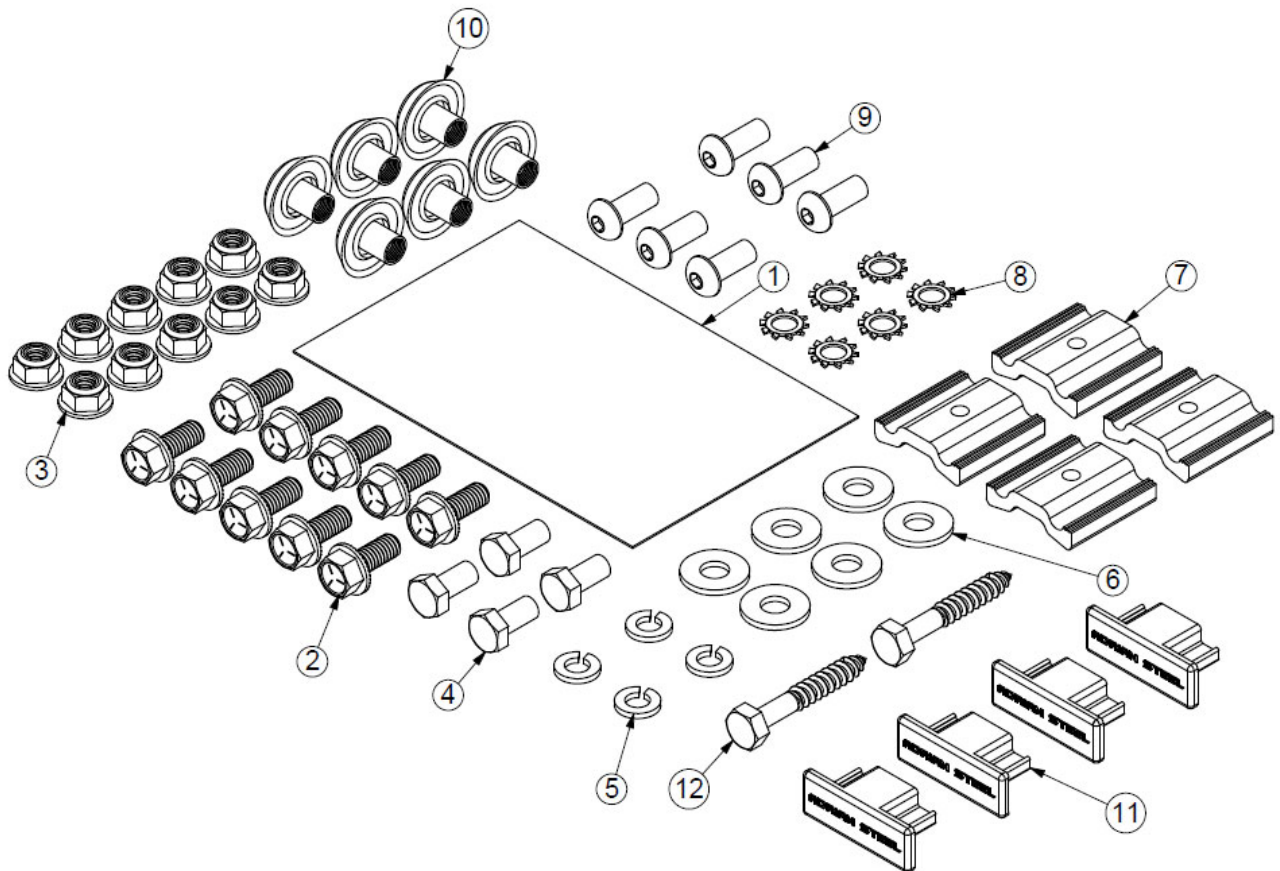
ITEM NO.	PART NUMBER	DESCRIPTION	QTY.
1	BAG0406-A	4" x 6" 3MIL AUTOBAG	1
2	FAS0438	SCREW,HFLNG 5/16-18X.75 ZP	20
3	FAS0440	NUT,HEX NLK FLG 5/16-18 - ZP	20
4	FAS0165	SCREW,HH 5/16-18X.62 ZN	8
5	FAS0098	Washer, Lock, Split, 5/16, Zinc Plate	8
6	FAS0086	WASHER,FLAT USS 5/16 ZP	12
7	35335-0	SLIDE, 1.5" / AD RAIL	8
8	FAS0085	WASHER,LCK EXT 5/16 ZP	12
9	FAS0668	Screw, Button Hd Hex Soc, 5/16-18X.75, SS	12
10	FAS0463	T-NUT,ENCAP 5/16-18 X 3/8, WHITE	12
11	FAS0467	BOLT,LAG 5/16-9X2.00 ZN	4
12	36496-0	END CAP	8



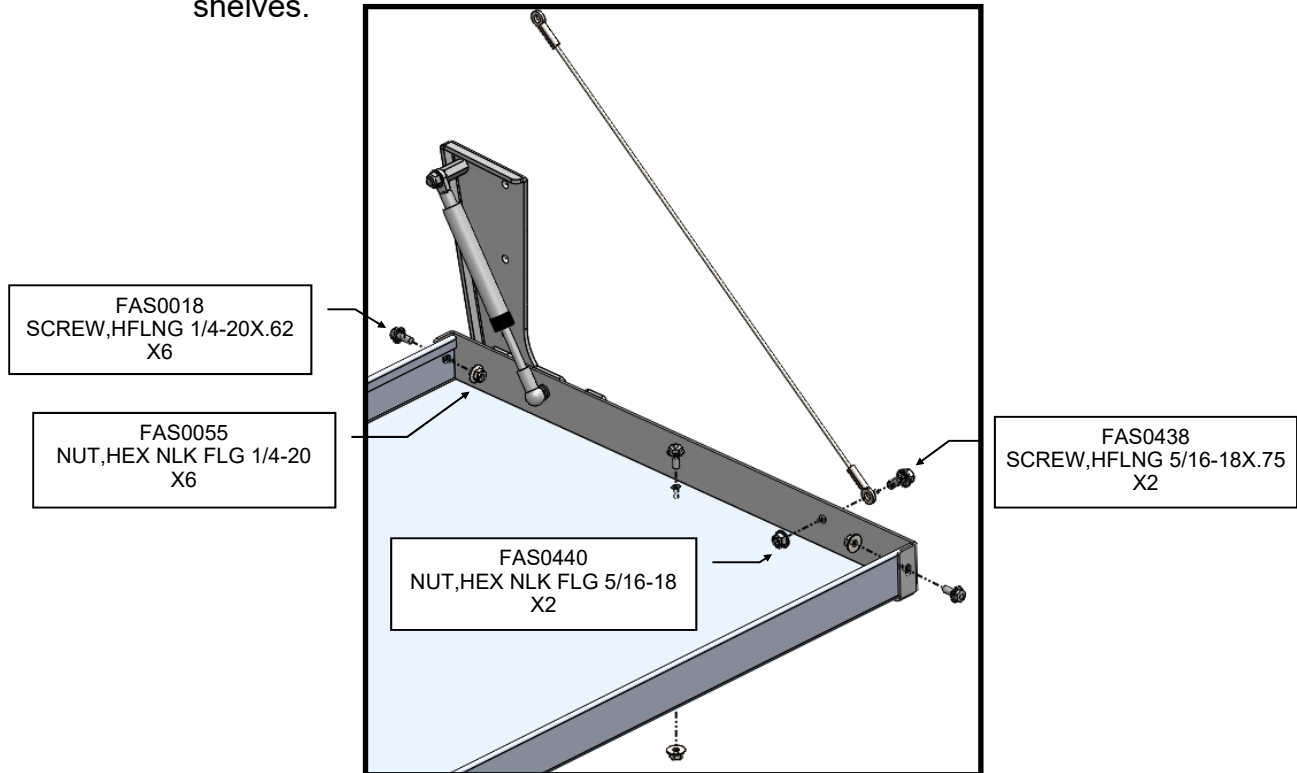
**Installation and/or Assembly Fasteners
BAG63425, BAG FOR FSFMKRFP**

Use this bag for add-on shelving units installed in Box trucks with fiberglass reinforced plywood walls.

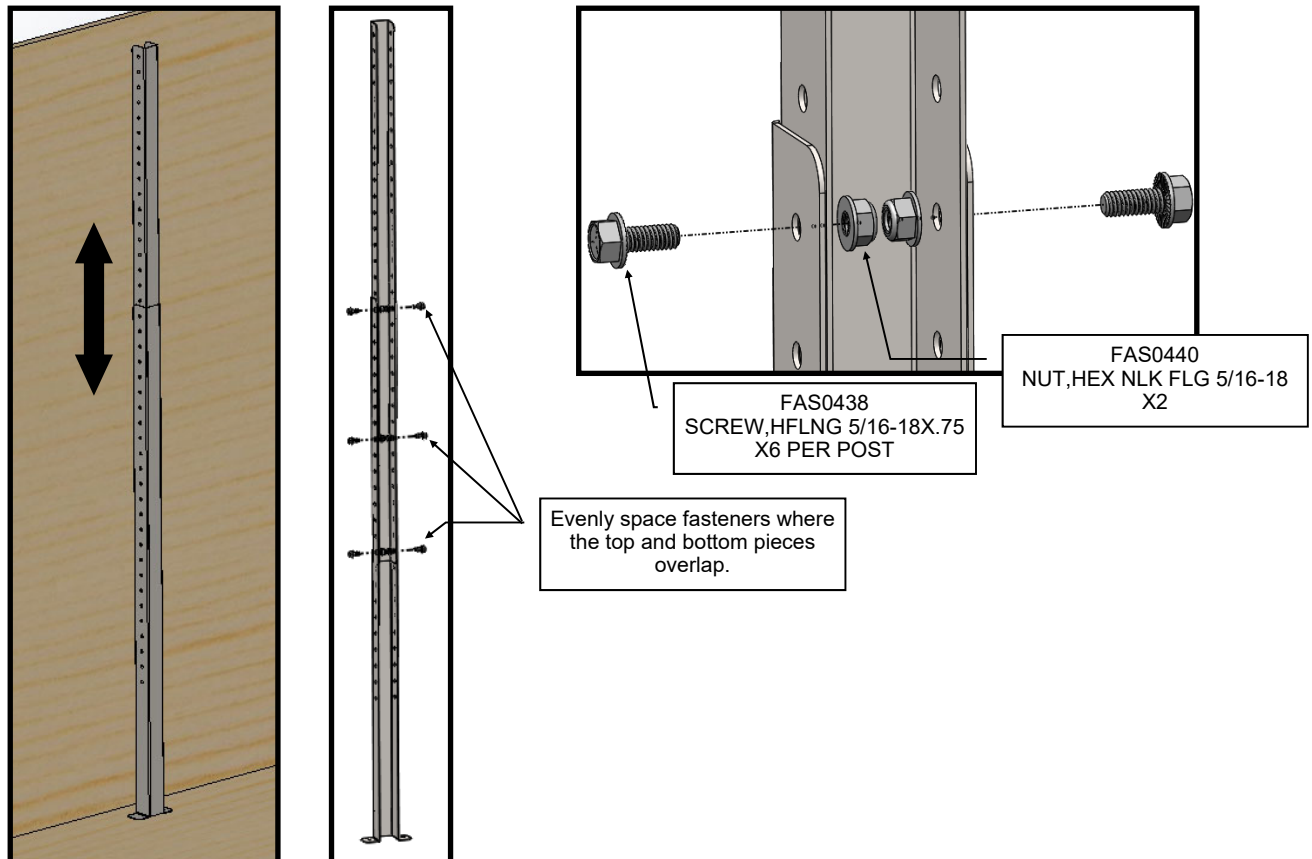
ITEM NO.	PART NUMBER	DESCRIPTION	QTY.
1	BAG0406-A	4" x 6" 3MIL AUTOBAG	1
2	FAS0438	SCREW,HFLNG 5/16-18X.75 ZP	10
3	FAS0440	NUT,HEX NLK FLG 5/16-18 - ZP	10
4	FAS0165	SCREW,HH 5/16-18X.62 ZN	4
5	FAS0098	Washer, Lock, Split, 5/16, Zinc Plate	4
6	FAS0086	WASHER,FLAT USS 5/16 ZP	6
7	35335-0	SLIDE, 1.5" / AD RAIL	4
8	FAS0085	WASHER,LCK EXT 5/16 ZP	6
9	FAS0668	Screw, Button Hd Hex Soc, 5/16-18X.75, SS	6
10	FAS0463	T-NUT,ENCAP 5/16-18 X 3/8, WHITE	6
11	36496-0	END CAP	4
12	FAS0467	BOLT,LAG 5/16-9X2.00 ZN	2



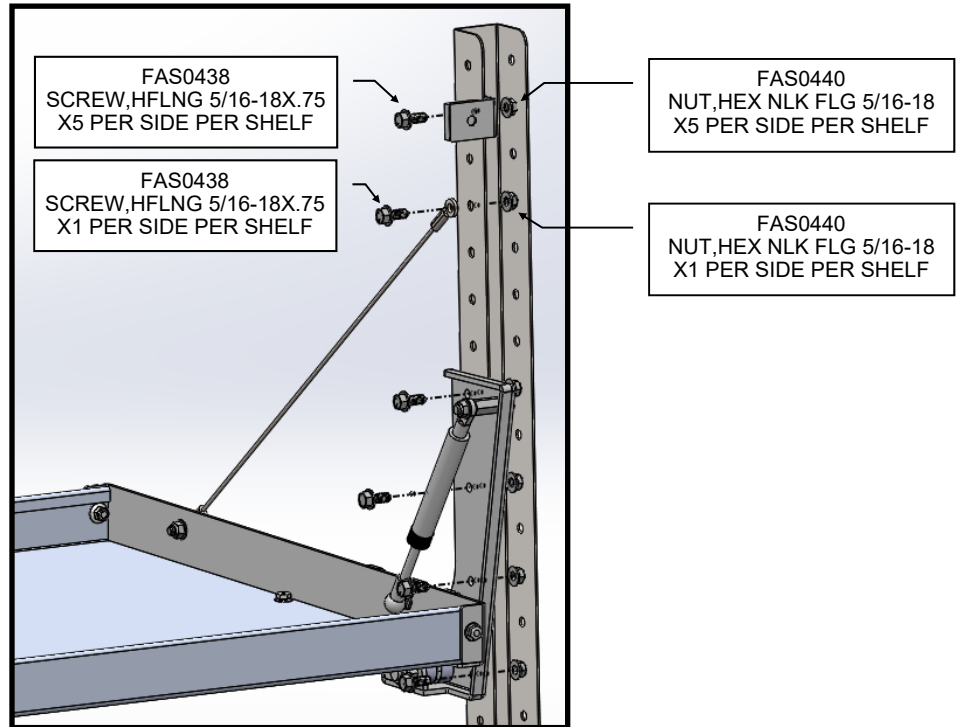
Step 01 Mount the folding arms to the shelf. Support cables are only included in 24" deep shelves.



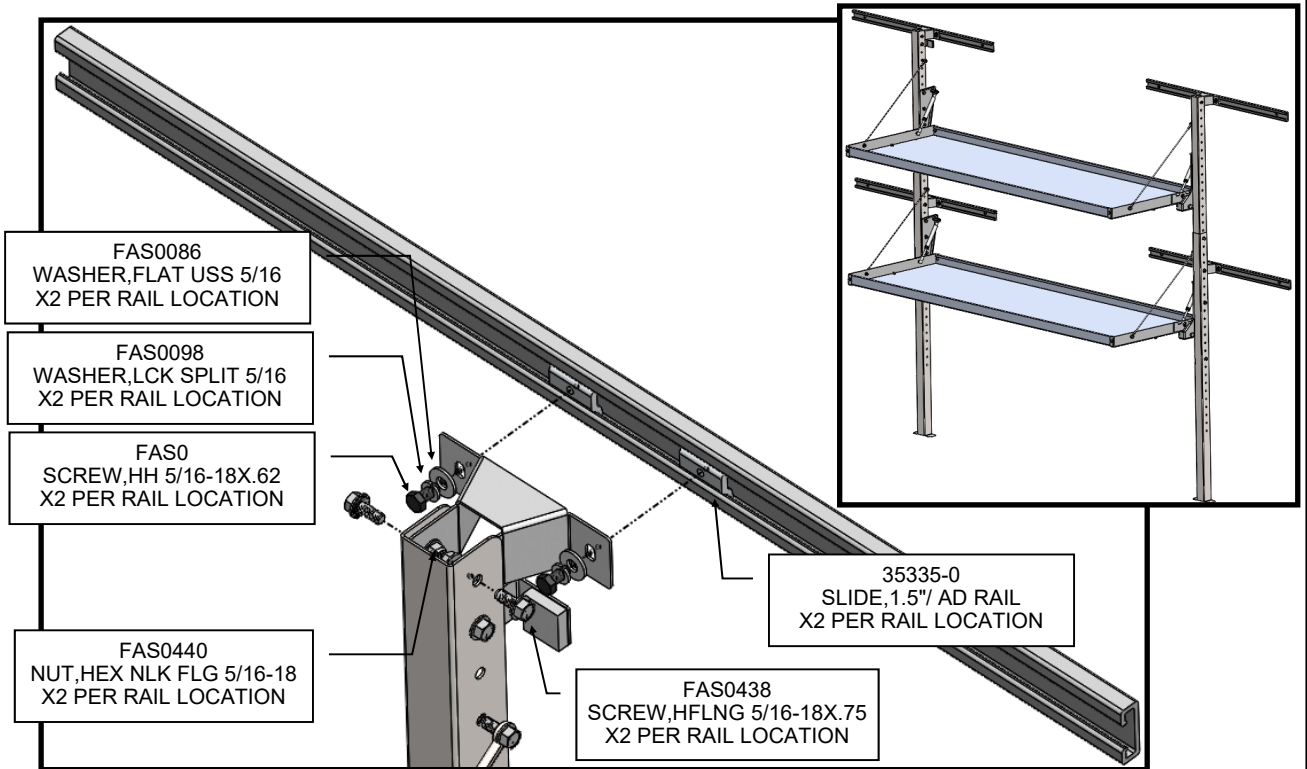
Step 02 Determine the height for the telescoping vertical post and loosely fasten.



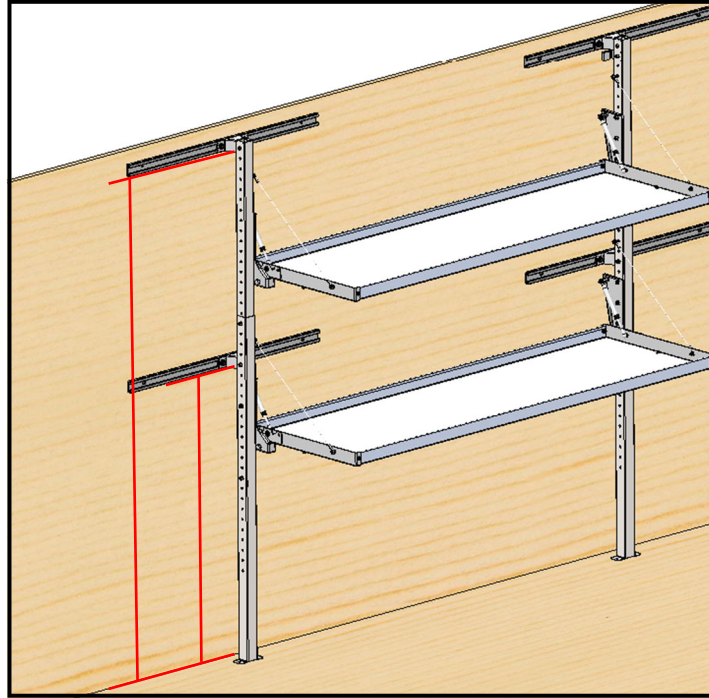
Step 03 Mount the shelf assembly to the vertical posts at the desired height(s) and install shelf stops and bumpers. Fully tighten all fasteners. Fasteners from Step 02 may need to be removed if they interfere with the location of the mounting bracket. Cables are only present included with 24" deep shelf kits.



Step 04 Loosely fasten the mounting brackets and rails to the vertical post. Install the first set brackets and rails as high as possible and the set close to the middle of the post.

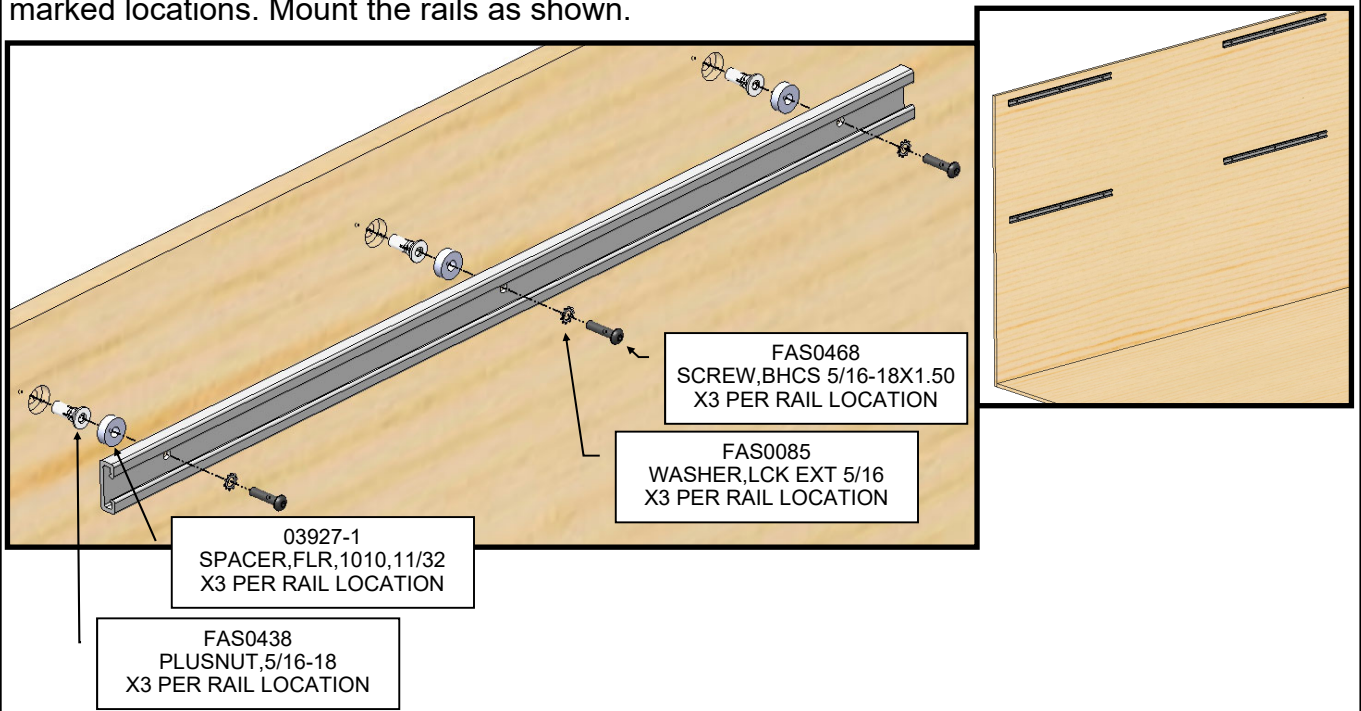


Step 05 Find the height of the rails on the cargo walls. And remove the rails from the shelf assembly.

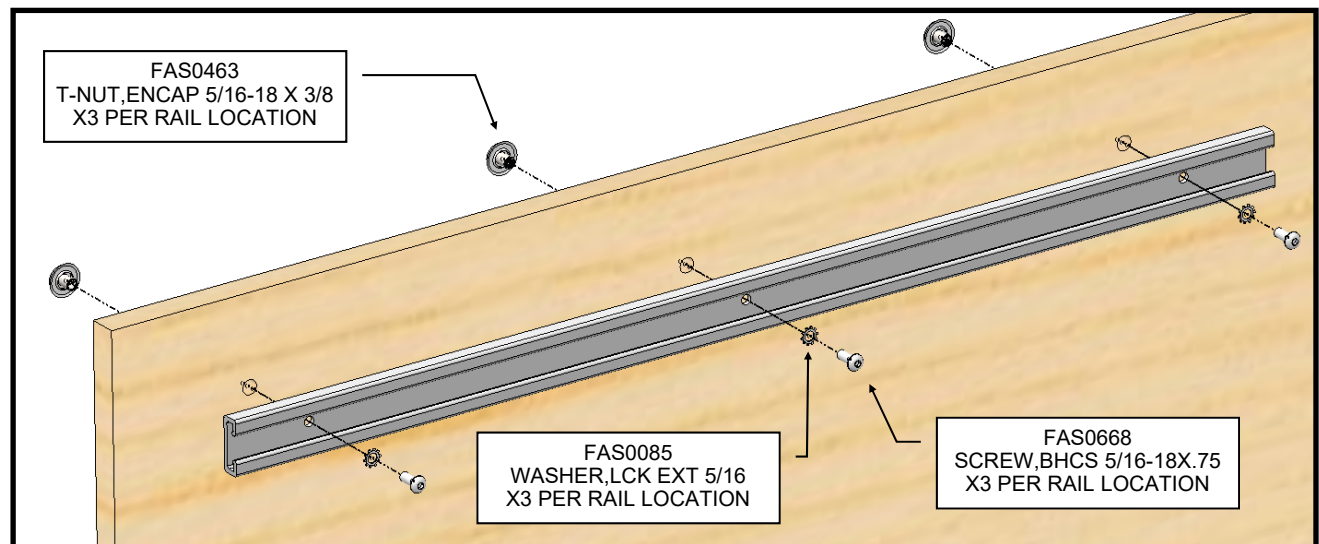


Step 06 of the instruction will be specific to the type of box truck. For structural posts, continue below.
For fiberglass reinforced plywood skip to Step 06B on page 13.

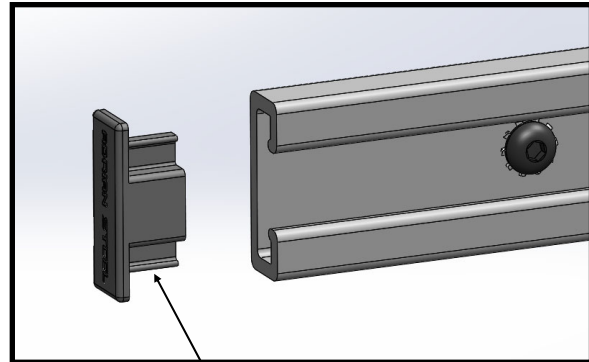
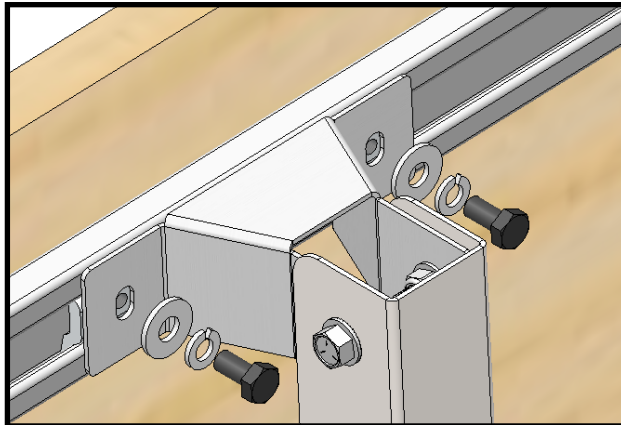
Step 06A The rails have holes spaced at 16" for typical structural post mounting. Locate the posts in the cargo area and center the holes on the posts. Place the rails at the heights previously measured and mark your holes. Depending on the length of shelf being installed, structural posts may need to be skipped so the mounting brackets will line up on the rail. Use a whole saw to cut through the plywood and refer to page 3 for setting the plusnuts in the marked locations. Mount the rails as shown.



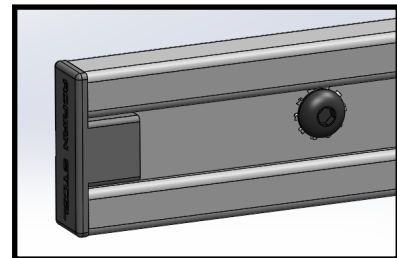
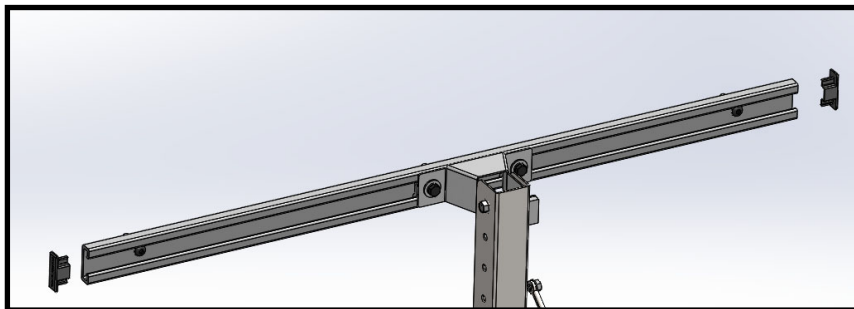
Step 06B For mounting in fiberglass reinforce plywood box trucks. You will use encapsulated T-nuts to mount the rails to the wall through the outside of the cargo area. Place the rails at the heights previously measured and mark your holes. The folding shelf post should be centered on the rail, except when mounting near the front or rear of the cargo area. Keep this in mind while you place and mark your mounting holes. Mount the rails as shown. You will need a second person on the outside of the vehicle to hold the T-nut while you begin threading the bolt.



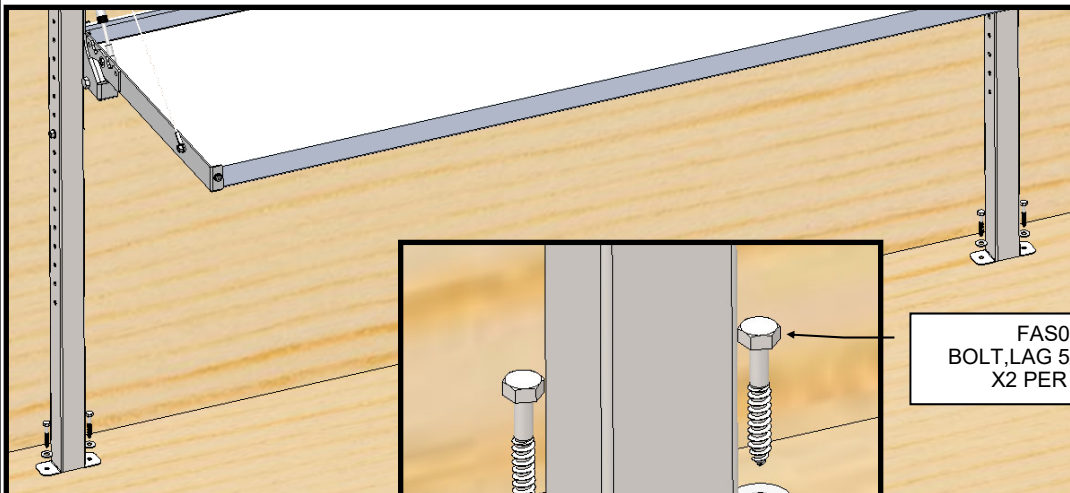
Step 7 Re-attach the shelf assembly to the rails. You may slide the shelving unit along the rail to the desired position. Fully tighten all fasteners. Place end caps on rails.



36496-0
END CAP, RAIL EXTR #2
X2 PER RAIL LOCATION

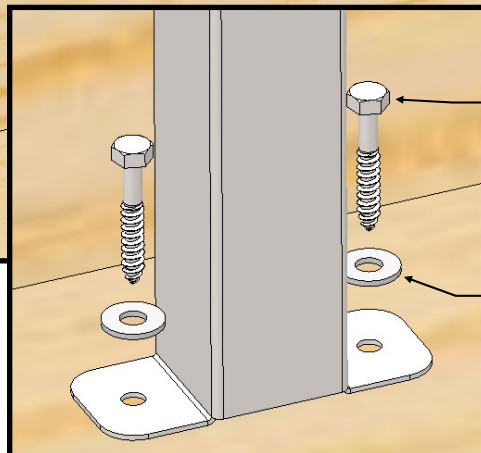


Step 8 Fasten the bottom of the vertical post to the floor of the cargo area using the supplied lag bolts. This installation is for 2x4 lumber floors. Drill a 9/64" pilot hole for the lag bolts. For other materials, the post can be through bolted through the floor. Installation is now complete for a sing shelving unit.

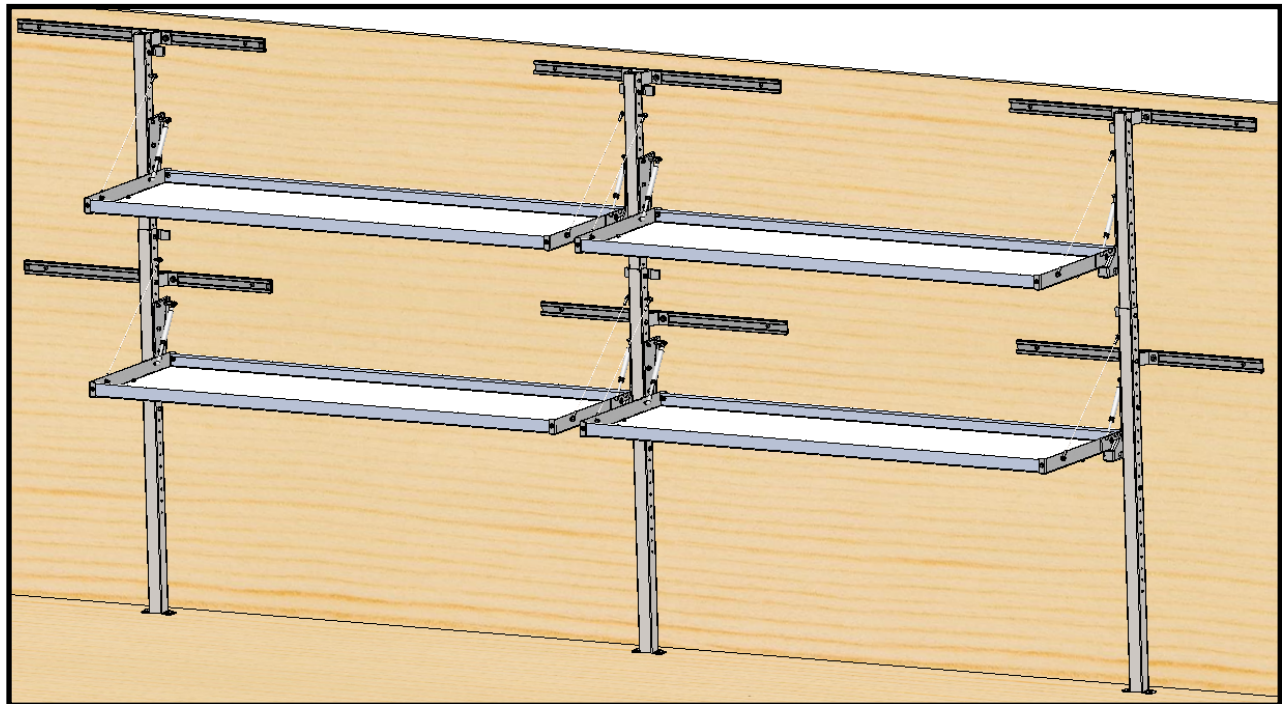
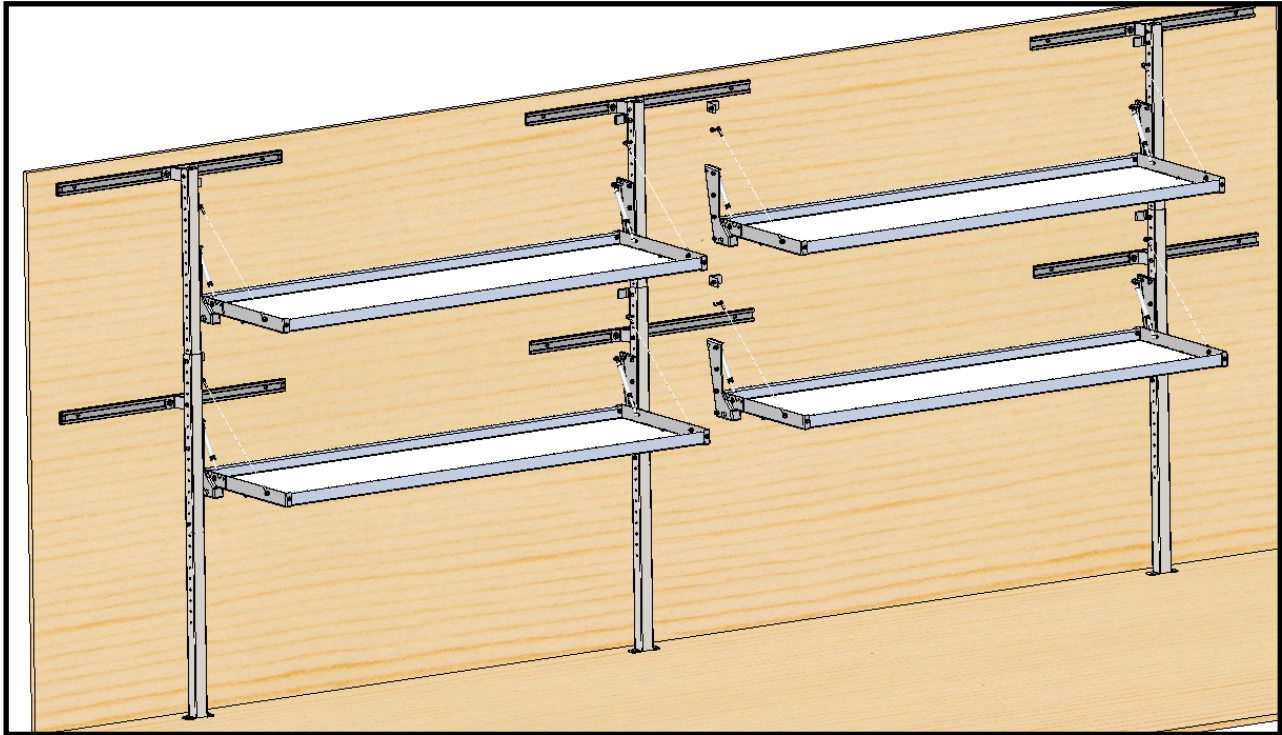


FAS0467
BOLT, LAG 5/16-9X2.00
X2 PER POST

FAS0086
WASHER, FLAT USS 5/16 ZP
X2 PER POST



Step 9 Additional shelving units share the vertical post between them. To install additional units, follow steps 1-8 using the post from the full shelving unit on one side.



**DOUBLE CHECK ALL FASTENERS LOCATIONS TO BE SURE THAT ALL
FASTENERS ARE TIGHTENED TO SPECIFICATIONS.
YOUR INSTALLATION IS NOW COMPLETE!
STOW THIS COPY IN THE VEHICLE FOR FUTURE REFERENCES!**