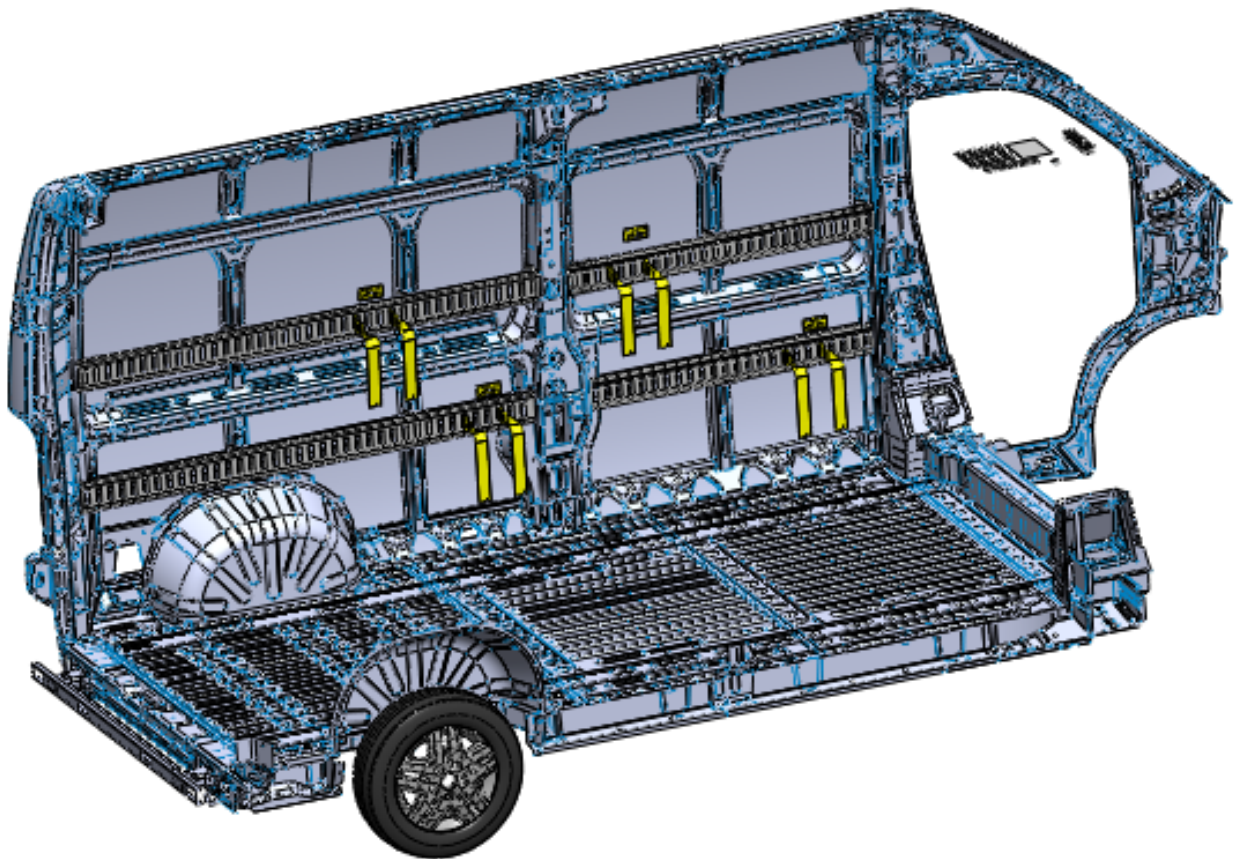


### Introduction / Comments:

This street side (drivers) e-track kit is designed to fit the 2014 Promaster 159” High Roof.

**Note:**

It is advised that all fasteners used in this assembly and installation should be checked for tightness at the following intervals: @ 2-weeks and again @ 6-weeks of operation. This preventive maintenance step must be completed to ensure your Partition gives you long service life.



### **E-Track Kit (Street Side) 2014 Promaster 159” High Roof vehicle ET159PMSS**

## - PRECAUTIONS -





 **CAUTION**   
**THE USE OF AIR IMPACT TOOLS CAN  
OVER-TORQUE FASTENERS AND  
CAUSE FASTENER FAILURE!**



 **CAUTION**   
**ALL INSTALLATION HOLES SHOULD BE SEALED  
WITH SILICON OR BUTYL SEALANT TO PREVENT  
EXHAUST FUMES FROM ENTERING THE VEHICLE!**



 **DANGER**   
**INSPECT FOR FUEL TANK, FUEL LINES, BRAKE LINES, HIGH  
VOLTAGE BATTERIES AND ELECTRICAL LINES PRIOR TO  
DRILLING TO AVOID DAMAGING CRITICAL VEHICLE SYSTEMS  
OR INJURY TO INSTALLER DURING INSTALLATION PROCESS!**



 **CAUTION**   
**TO AVOID DAMAGING THE VEHICLE ALWAYS  
USE DRILL STOPS WHEN DRILLING ANY IN-  
STALLATION HOLES!**



## - IMPORTANT WARRANTY REQUIREMENTS -

1. SUBSTITUTING ADRIAN STEEL SPECIFIED FASTENERS FOR ASSEMBLY AND/OR INSTALLATION WILL VOID YOUR PRODUCT WARRANTY.
2. ALL HOLES DRILLED INTO VEHICLE SHOULD HAVE THE RAW METAL EDGES SEALED WITH A SELF-ETCHING PRIMER TO RESIST CORROSION AND POTENTIAL FASTENER POINT FAILURE.
3. ALL FASTENERS USED IN THE INSTALLATION OF THIS PRODUCT SHOULD BE TIGHTENED TO THE TORQUE(S) SPECIFIED IN THESE INSTRUCTIONS.
4. THESE INSTRUCTIONS SHOULD BE KEPT WITH THE VEHICLE.

### THE BASIC TOOLS NEEDED FOR MOST INSTALLATIONS



DRILL



DRILL BIT WITH  
STOP



RATCHET, SOCKETS  
AND/OR WRENCHES



SCREWDRIVERS



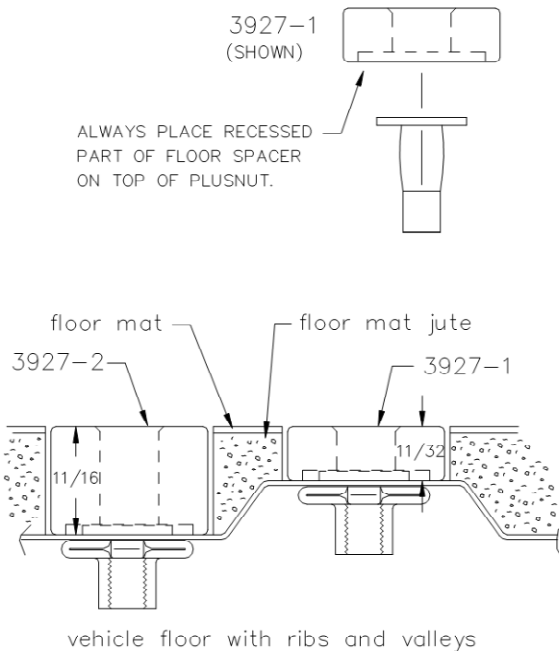
MEASURING TAPE

ADDITIONAL TOOLS MAY BE NEEDED FOR THIS INSTALLATION AND THEY WILL BE IDENTIFIED IN THE STEPS THAT FOLLOW.

If your vehicle contains carpet or a rubber floor mat you will need to prepare the mounting location. Position the product to be installed into the vehicle and once you are satisfied with the mounting locations, mark the mounting locations. Using a 1-3/16" diameter carpet cutter (P/N: 31183-0). Select the appropriate floor spacers as shown in the illustration. Set those aside for use later into the installation process. Using the correct drill bit size for the selected plusnut, drill the mounting holes in the vehicle sheet metal to prepare for installing the plusnuts.

If you are thru-bolting at any of the locations simply drill a hole that is 1/16" larger than the bolt size(s) for those locations.

Once you have drilled the holes into the vehicle, the raw metal edges should be sealed using a self-etching primer to resist corrosion and potential fastener point failure.



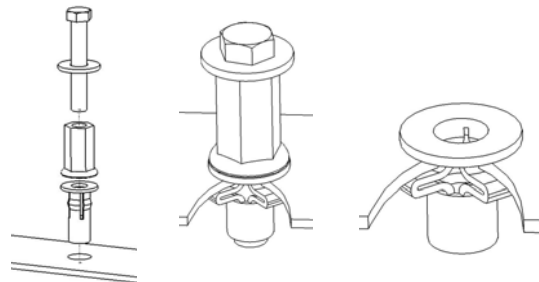
A PLUSNUT (RIVNUT) SETTING TOOL IS REQUIRED FOR PLUSNUT (RIVNUT) INSTALLATION AND IS SUPPLIED WITH THIS KIT. OR USE AN AIR POWERED PLUSNUT SETTING GUN.

1/4-20UNC Plusnut (FAS0052) Use 3/8" dia. drill w/stop

FAS0080 SCREW, HXHD, 1/4-20UNCx2.00", G8  
FAS0067 WASHER, FLAT, 1/4"ID  
22200-0 PLUSNUT TOOL

5/16-18UNC Plusnut (FAS0091) Use 1/2" dia. drill w/stop

FAS0095 SCREW, HXHD, 5/16-18UNCx2.00", G8  
FAS0086 WASHER, FLAT, 5/16"ID  
22200-0 PLUSNUT TOOL

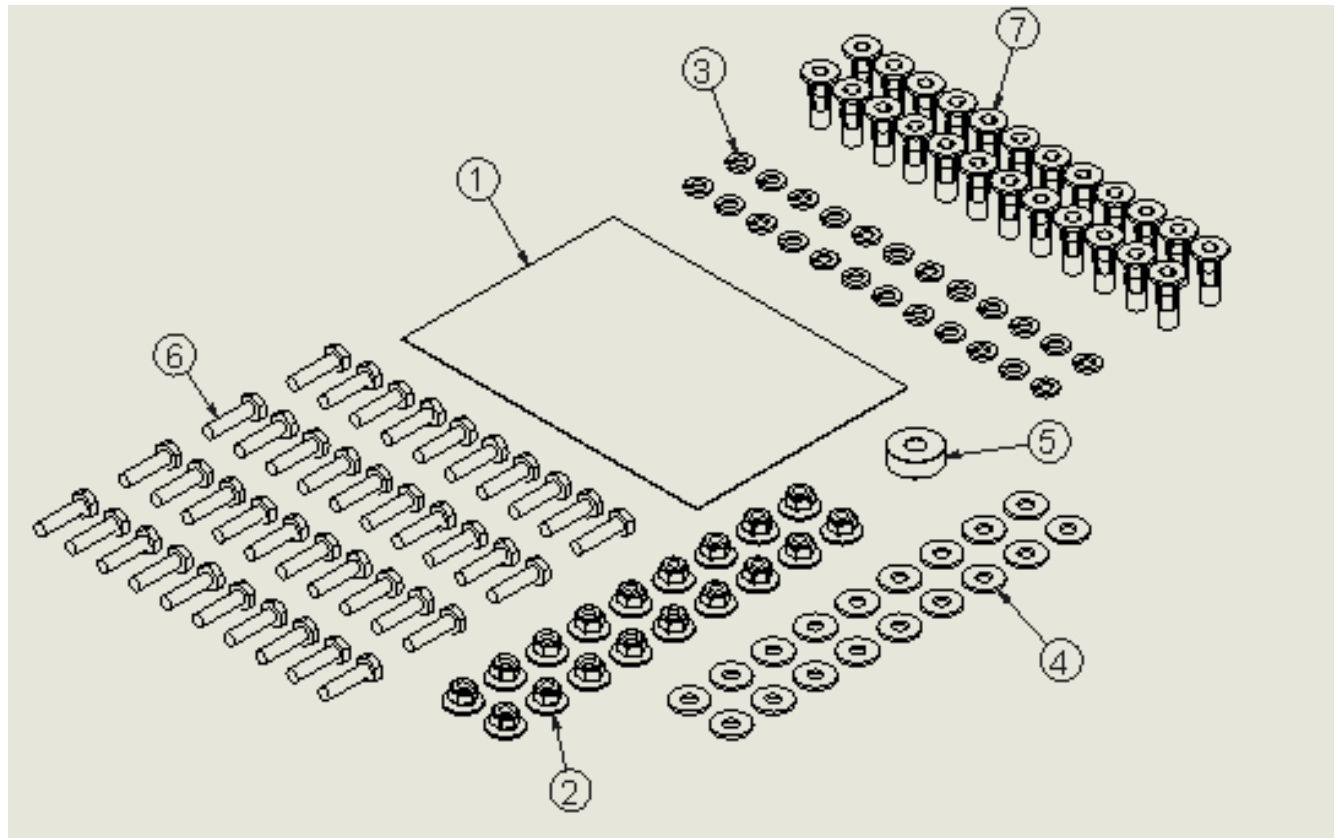


Place barrel of the plusnut body in sheet metal thru hole until flange is flush with sheet metal.

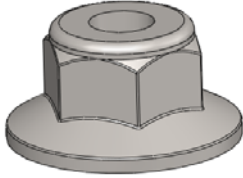
Using a 9/16" combination wrench of plusnut tool body and a second hand wrench, ratchet, or air tool, rotate the hex bolt head CW to draw plus nut flanges up (set the plusnut).

**Installation and/or Assembly Fasteners**

ITEM NO.	PART NUMBER	DESCRIPTION	BAG45597/QTY.
1	BAG0507-A	5" x 7" 3MIL AUTOBAG	1
2	FAS0055	Nut, Hex Flange, Nylock 1/4-20	18
3	FAS0060	Washer, Lock, Split, 1/4	24
4	FAS0067	Washer, Flat, 1/4	18
5	03927-1	Floor Spacer Short	1
6	FAS0078	Screw, Hex Hd, 1/4-20x1.00 Zn Plate, Grade 8	40
7	FAS0052	Plusnut, 1/4	24



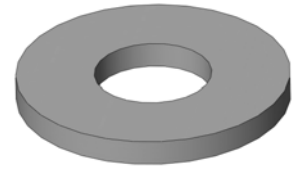
Individual Fasten Identification Sheet



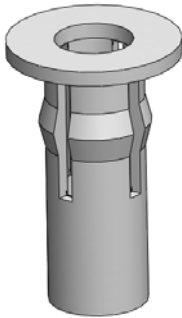
FAS0055  
Nut, HxFIng,  
Nylon Lock,  
1/4-20UNC



FAS0060  
Washer, SplitLock,  
1/4" ID



FAS0067  
Washer, Flat, 1/4"ID  
5/16 ID x 0.734" OD  
x .065



FAS0052  
Plusnut, PreBulbed,  
5/16-18UNC

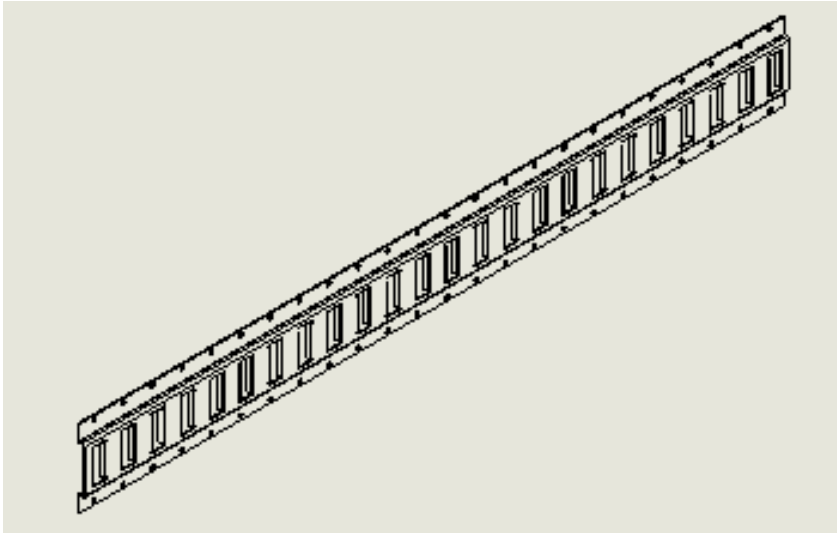


03927-1  
Spacer, Floor,  
11/32"



FAS0078  
Screw, Hx Hd,  
1/4-20UNC x 1"

## Installation and/or Assembly Hardware

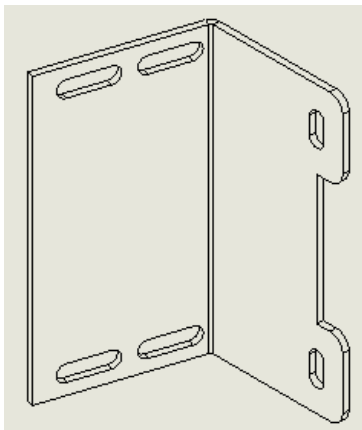


45030-G  
E-TRACK, CUT TO 48"  
Qty = 1

45031-G  
E-TRACK, CUT TO 52"  
Qty = 1

45034-G  
E-TRACK, CUT TO 78"  
Qty = 1

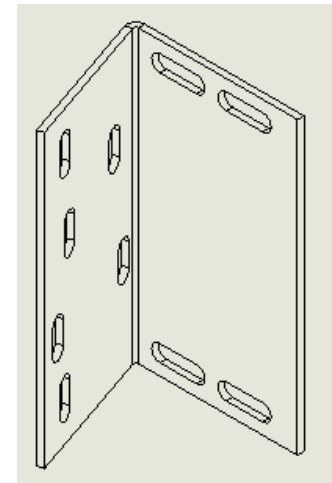
45035-G  
E-TRACK, CUT TO 77"  
Qty = 1



45594-G  
BRACKET, CENTER SUPPORT,  
E-TRACK, PROMASTER  
Qty = 6

\*\*\*\*\* WARNING \*\*\*\*\*  
  
E-TRAC TIE DOWN  
WEIGHT IS LIMITED TO  
200 LBS.

23916-0  
WARNING LABEL, E-TRACK  
Qty = 4



45593-G  
BRACKET, END SUPPORT,  
E-TRACK, PROMASTER  
Qty = 4

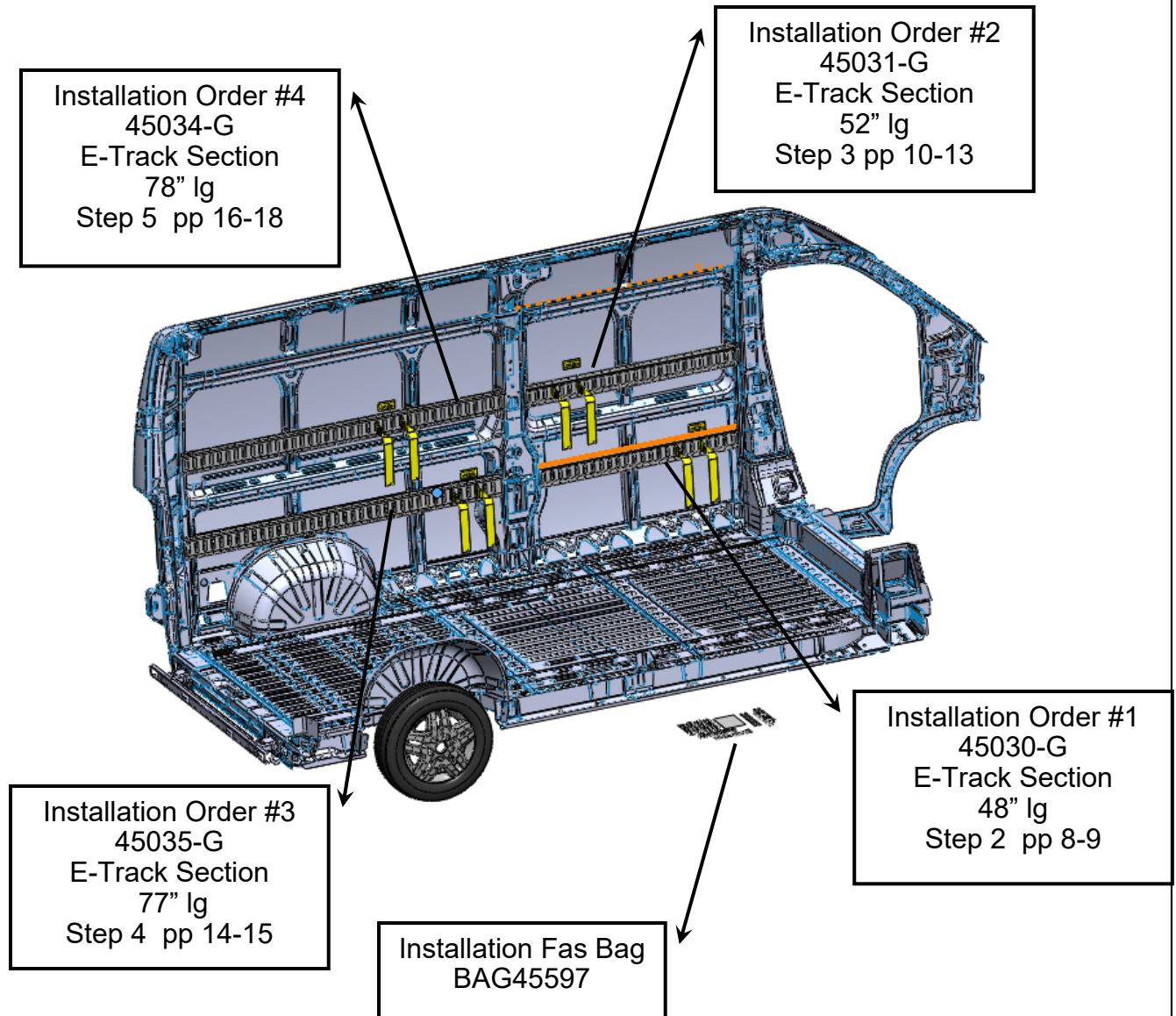


23896-0  
E-TRACK, STRAP, 12"  
W/CAM BUCKLE  
Qty = 4

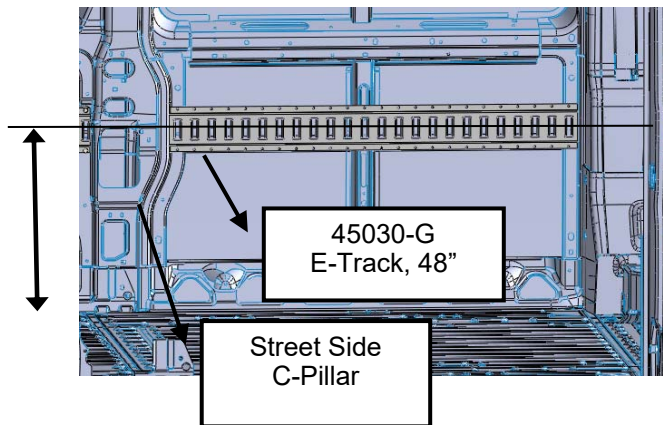


## Step 01 “ Introduction Statement ”

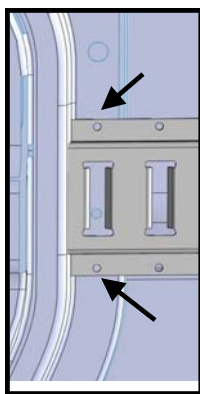
Installation of ET159PMSS will involve attaching four separate track sections in suggested order listed below, but can be rearranged at any time. During installation please make use of the information in the beginning section of these instructions describing plusnut installation and all associated caution/warning notes.



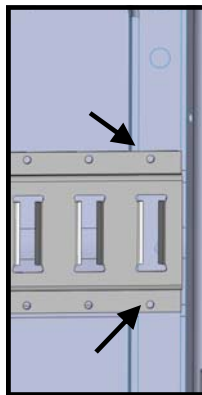
## Step 02 "Location & Installation of the Front Lower E-Track Section"



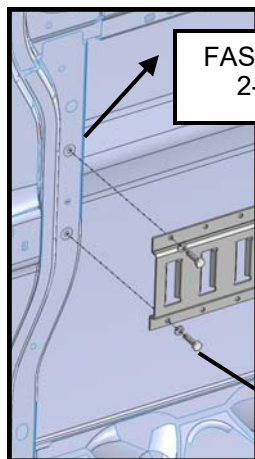
Position e-track section (45030-G) between the street side "B-Pillar" and "C-Pillar" as shown at left. Centerline of the e-track to be 21 inches above the vehicle floor. Check both ends centerline dimensions prior to marking the four mounting holes marks in the center left and right detail views. Use permanent marker pen. Once all four holes have been marked set e-track section aside.



Mark/Drill  
4-pl



Install four 1/4-20UNC plusnuts (FAS0052) in marked holes, use a 3/8" diameter drill bit with a stop collar when drilling plusnut holes. See front of this instruction for proper plusnut installation.



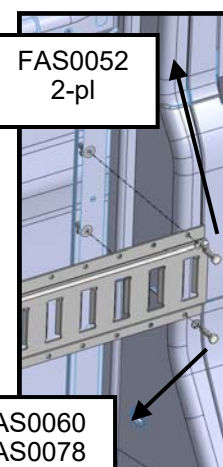
FAS0052  
2-pl

Once all four plusnuts have been installed, reposition the e-track section and secure in place with four of the following fasteners.

### Note

Fasteners to be hand tight only.

FAS0060  
FAS0078  
2-pl



FAS0052  
2-pl

FAS0060  
FAS0078  
2-pl



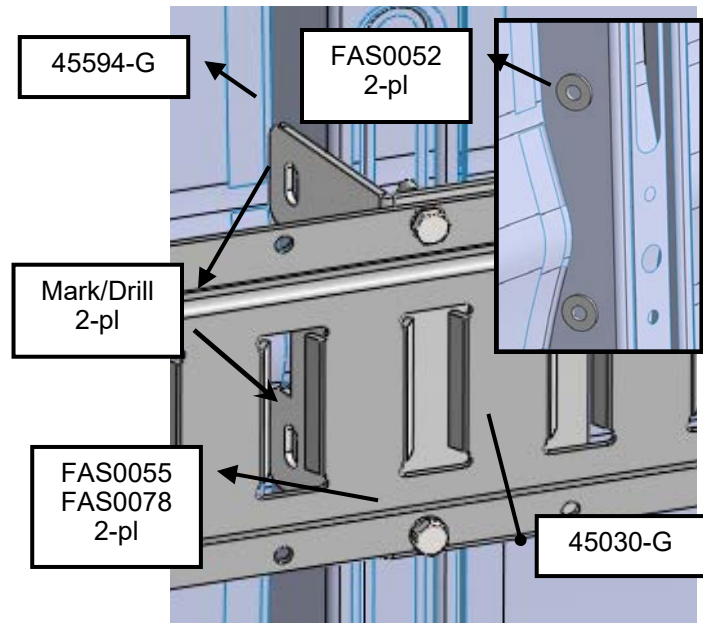
## Step 02 "Location & Installation of the Frnt Lwr E-Trk Section, continued"

Position the Center E-Track Support Bracket (45594-G) as shown in figure at right. Secure bracket to e-track section with two each of the fasteners listed.

### Note

Fasteners to be hand tight only

Mark the center bracket plusnut locations using a permanent marker pen. Once both holes have been marked remove fasteners at each end of the e-track section and set aside at this time.

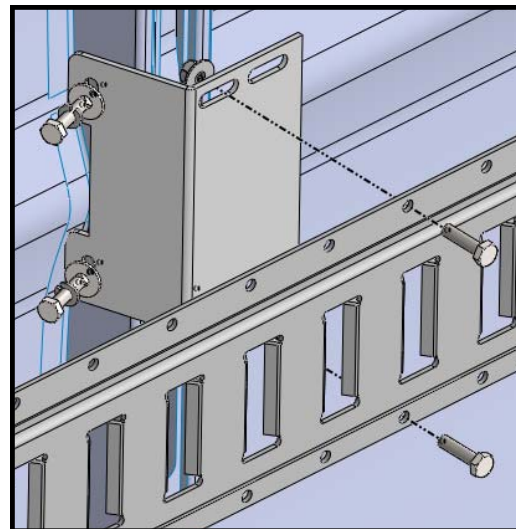


Install two 1/4-20UNC plusnuts (FAS0052) in marked holes, use a 3/8" diameter drill bit with a stop collar when drilling plusnut holes. See front of this instruction proper installation.

Once both plusnuts have been installed, reposition the e-track section and secure both ends to the "B" and "C" pillars. Next secure the center support bracket in place with two each of the listed fasteners.

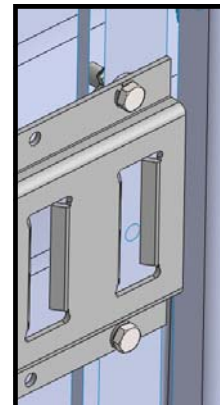
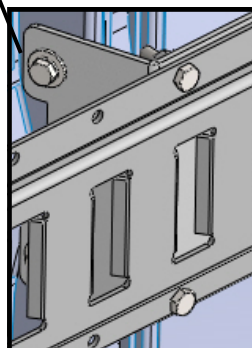
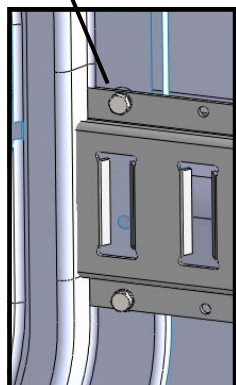
### Note

Tighten all fasteners, proceed to next step.



FAS0060  
FAS0078  
Typ

FAS0067  
FAS0060  
FAS0078  
2-pl

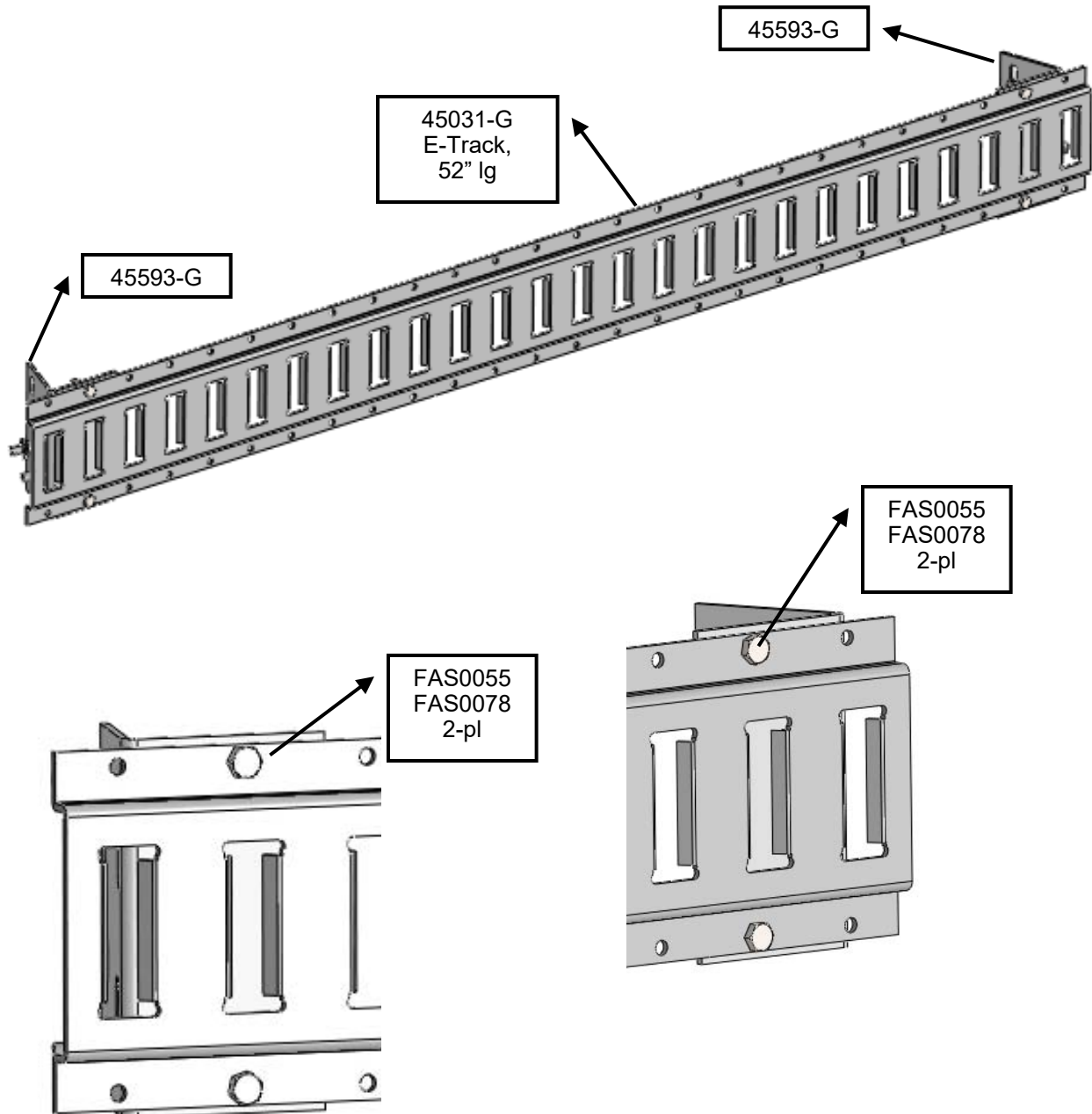


### Step 03 "Location & Installation of the Front Upper E-Track Section and Brackets"

Secure two end support brackets (45593-G) to the e-track section (45031-G) as shown in views below. Secure brackets to the e-track section with six of the listed fasteners.

#### Note

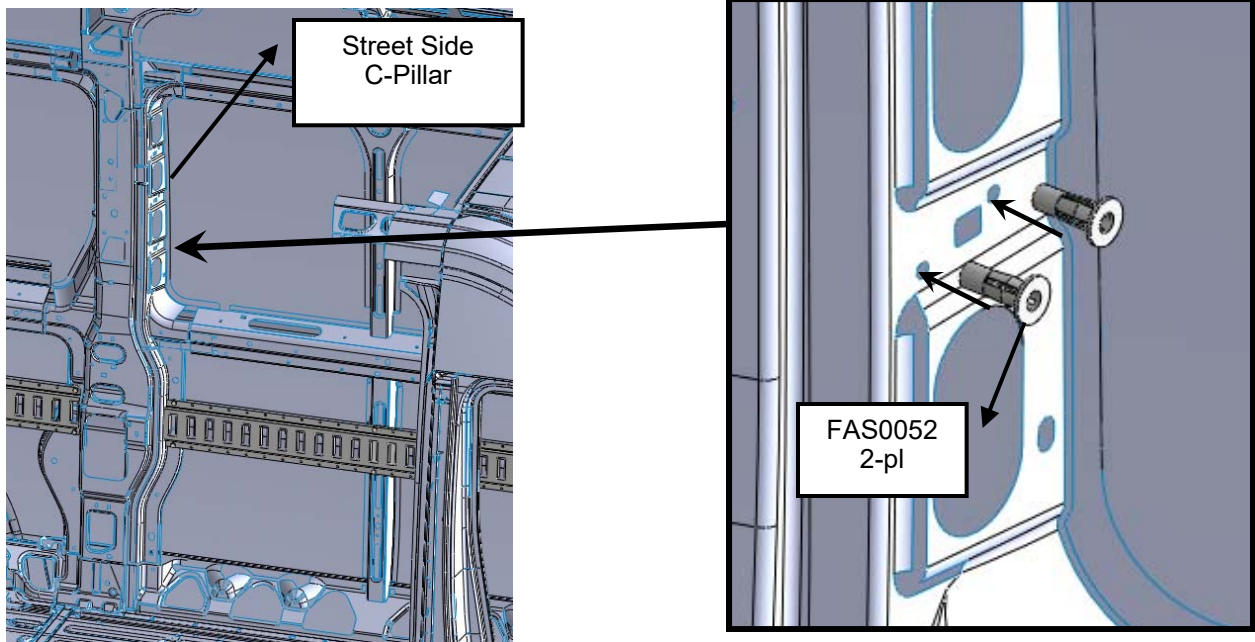
Fasteners to be hand tight only



### Step 03 "Location & Installation of the Frnt Upr E-Trk and Brackets, continued"

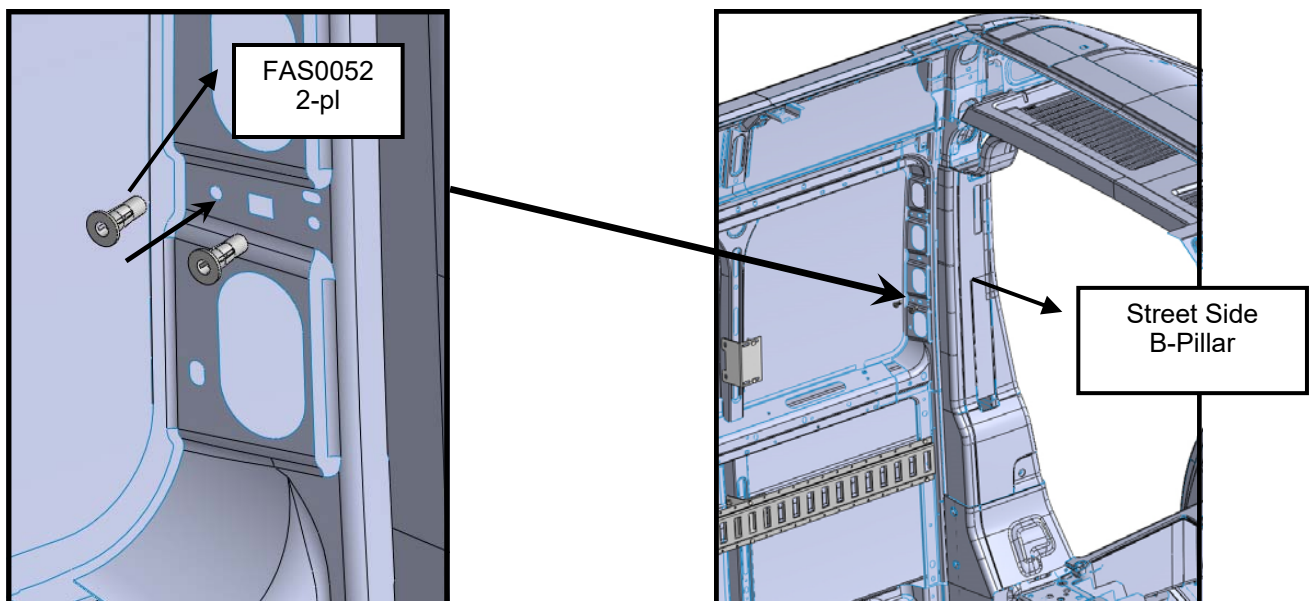
Install two 1/4-20UNC plusnuts (FAS0052) in indicated holes in the street side "C-Pillar", use a 3/8" diameter drill bit with a stop collar when enlarging existing OEM sheet metal holes shown in the right hand view.

See front of this instruction for proper plusnut installation.

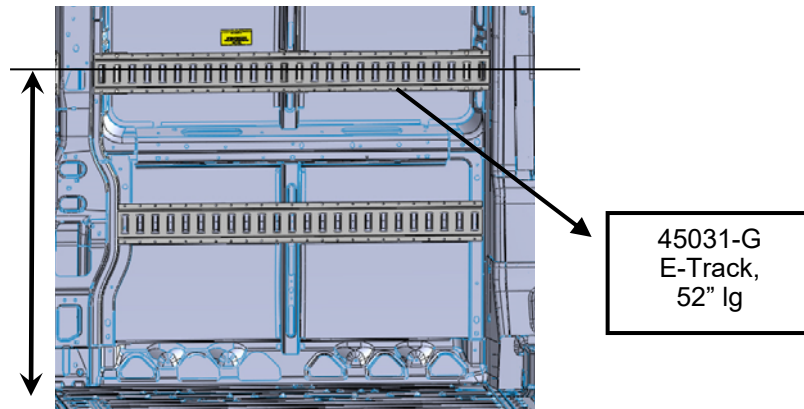


Install two 1/4-20UNC plusnuts (FAS0052) in indicated holes in the street side "B-Pillar", use a 3/8" diameter drill bit with a stop collar when enlarging existing OEM sheet metal holes shown in the right hand view.

See front of this instruction for proper plusnut installation.



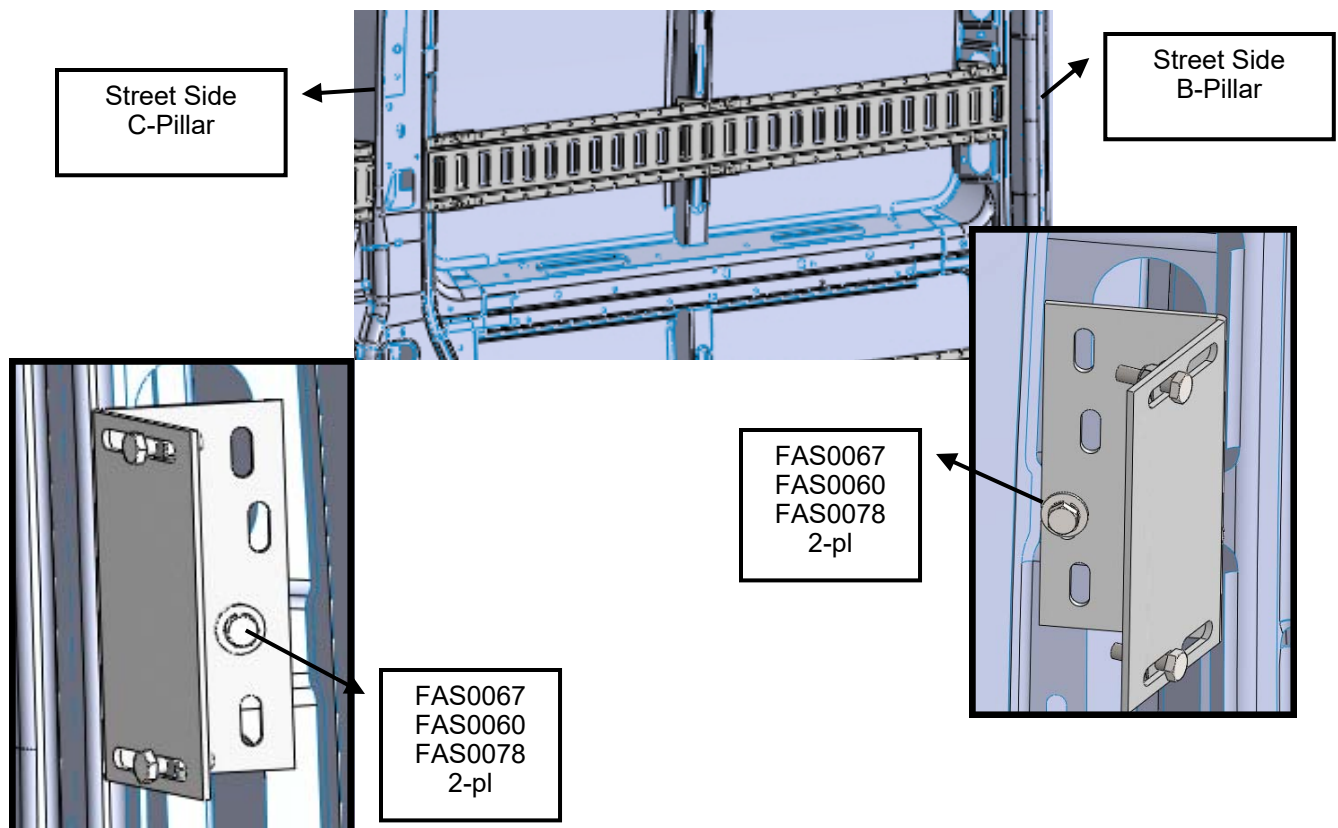
### Step 03 “Location & Installation of the Frnt Up E-Trk and Brackets, continued”



Position upper front e-track (45031-G) section (from pp 10) between the street side “B-Pillar” and “C-Pillar” as shown in views. Centerline of the E-track to be approx. 41” inches above the vehicle floor. Secure the end brackets to the “B-Pillar” and “C-Pillar” as shown in bottom two detail views. Use four of each of the fasteners listed below to secure brackets to the street side “B & C Pillars”.

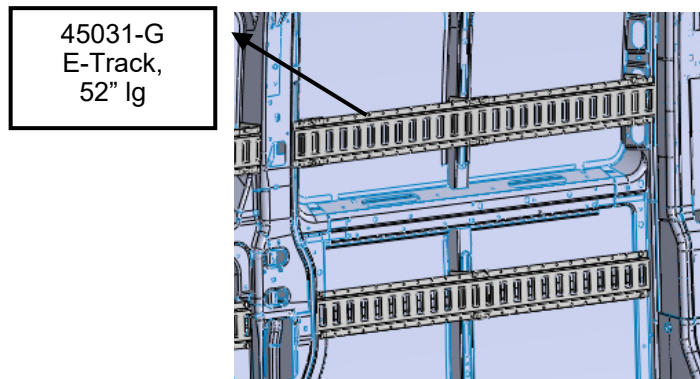
#### Note

E-track section has been removed from bottom views for clarity to show fastener locations





## Step 03 "Location & Installation of the Frnt Up E-Trk and Brackets, continued"



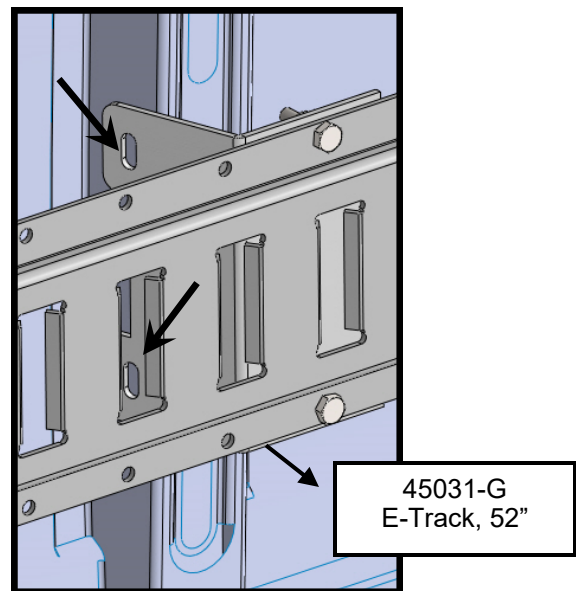
Position the Center E-Track Support Bracket (45594-G) as shown in figure at right.

### Note

Fasteners should be hand tight only

Mark the center bracket plusnut locations using a permanent marker pen. Once both holes have been marked remove fasteners at each end of the e-track section to the end support brackets and set aside at this time.

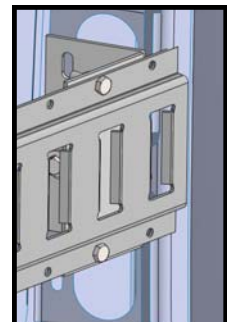
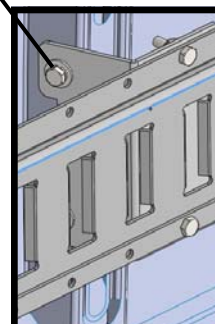
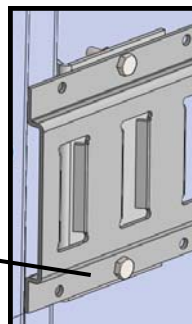
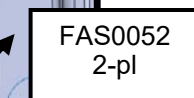
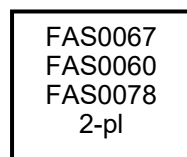
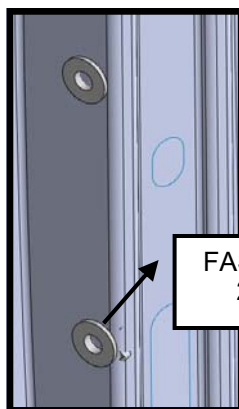
Install two 1/4-20UNC plusnuts (FAS0052) in marked holes, use a 3/8" diameter drill bit with a stop collar when drilling plusnut holes. See front of this instruction proper installation.



Once both plusnuts have been installed, reposition the e-track section and secure both ends to the "B" and "C" pillars. Next secure the center support bracket in place with two each of the listed fasteners.

### Note

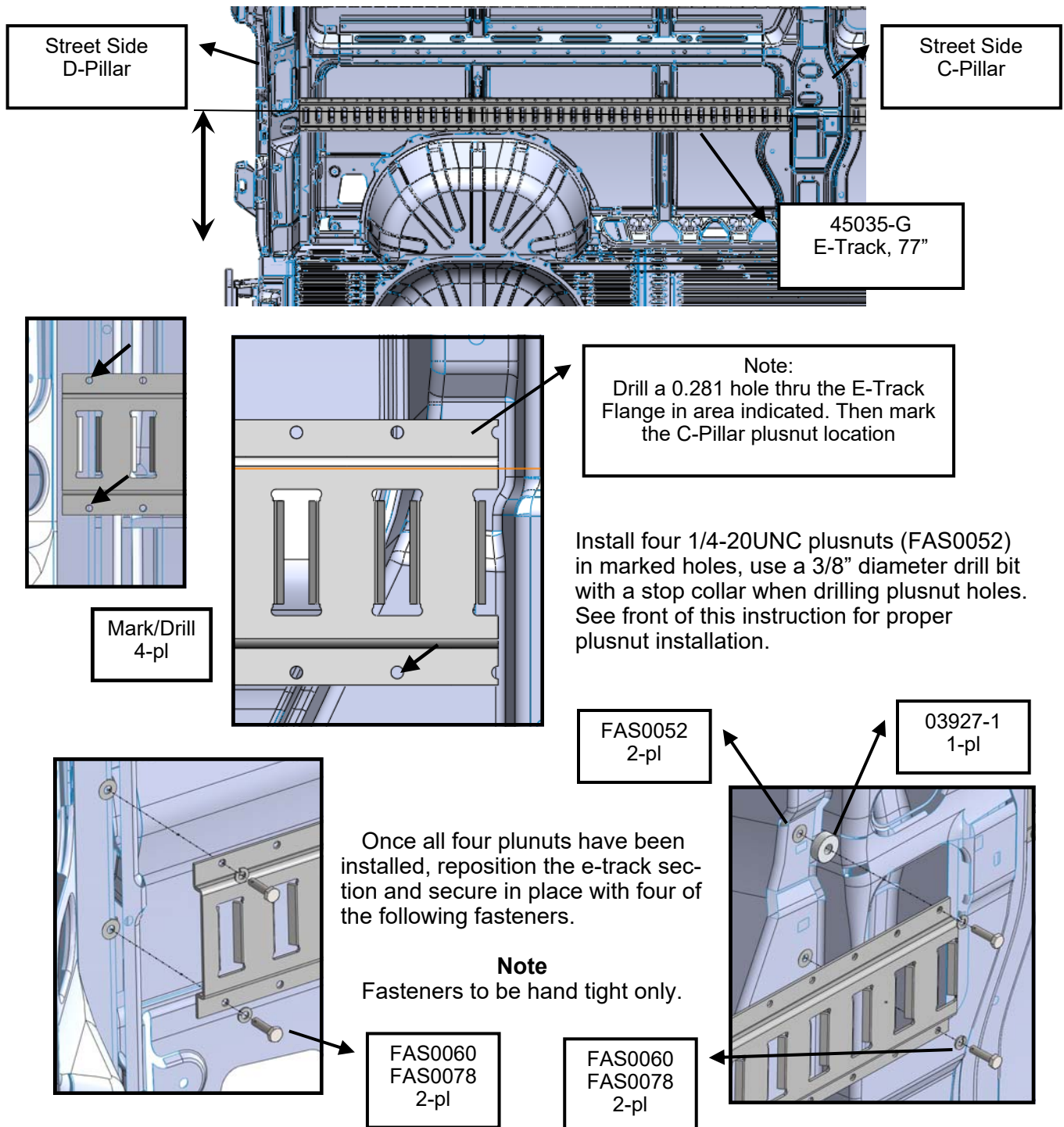
Tighten all fasteners, proceed to next step.



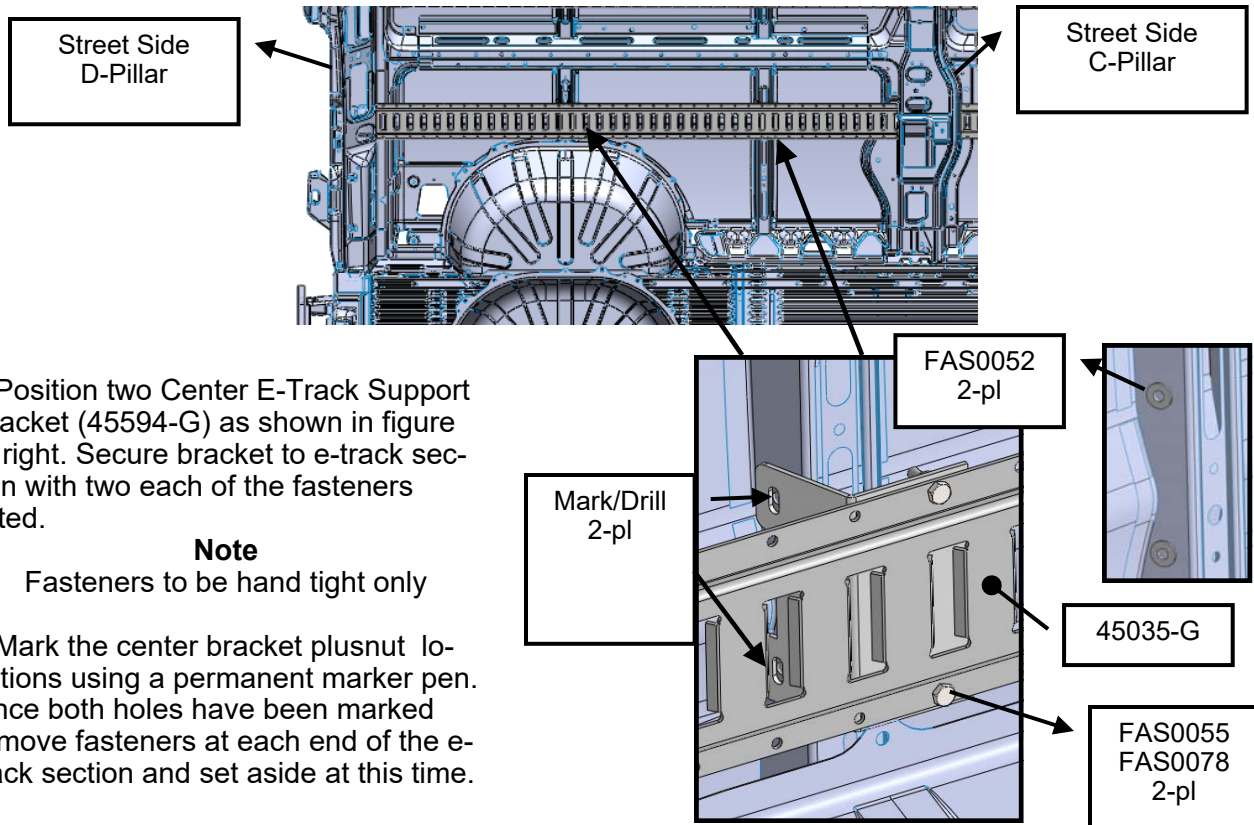


## Step 04 "Location & Installation of the Lower Rear E-Track Section and Brackets"

Position e-track section (45035-G) between the street side "C-Pillar" and "D-Pillar" as shown at below. Centerline of the e-track to be 21 inches above the vehicle floor. Check both ends center-line dimensions prior to marking the four mounting holes marks in left and right details views shown below. Use permanent marker pen. Once all four holes have been marked set e-track section aside. **Please note orientation of e-track section (45033-G) as shown in middle two views. Proper orientation ensures proper e-track to bracket mounting hole alignments.**



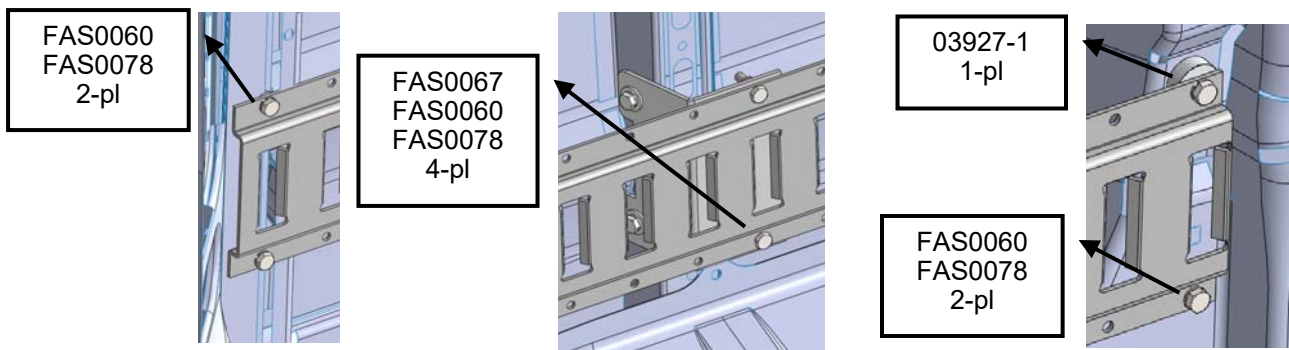
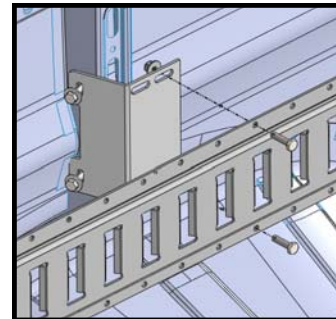
## Step 04 “Location & Installation of the Lwr Rr E-Trck Sand Brkts, continued”



Install two 1/4-20UNC plusnuts (FAS0052) in marked holes, use a 3/8" diameter drill bit with a stop collar when drilling plusnut holes. See front of this instruction proper installation.

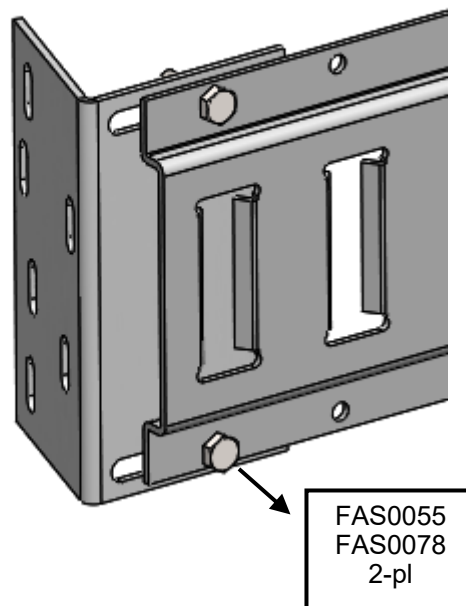
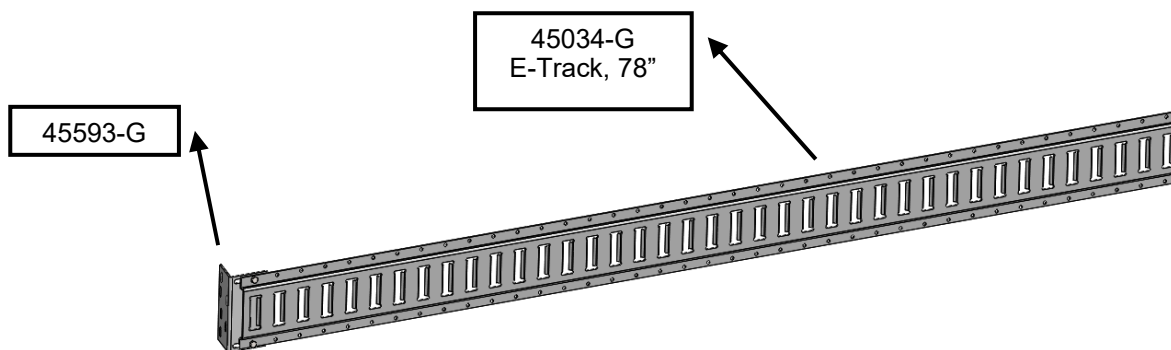
Once all four plusnuts have been installed, reposition the e-track section and secure both ends to the “B” and “C” pillars. Next secure the center support bracket in place with two each of the listed fasteners.

**Note**  
Tighten all fasteners, proceed to next step.

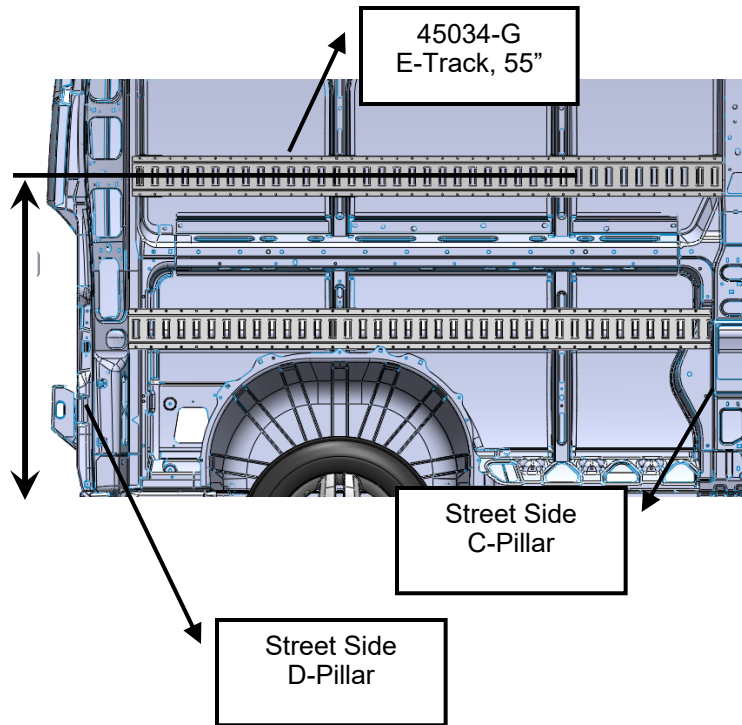


## Step 05 “Location & Installation of the Upper Rear E-Track Section and Brackets”

Secure one end support brackets (45593-G) to the e-track section (45034-G) as shown in views below. Secure bracket to the e-track section with six of the listed fasteners. **Please note orientation of e-track section (45033-G) as shown in middle view. Proper orientation ensures proper e-track to bracket mounting hole alignments.**



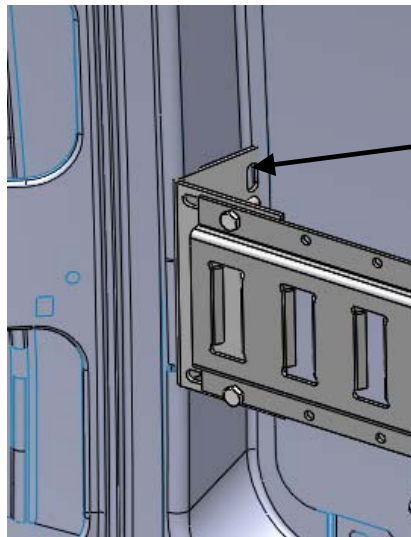
## Step 05 "Location & Installation of the Upr Rr E-Trk Section and Brkts, continued"



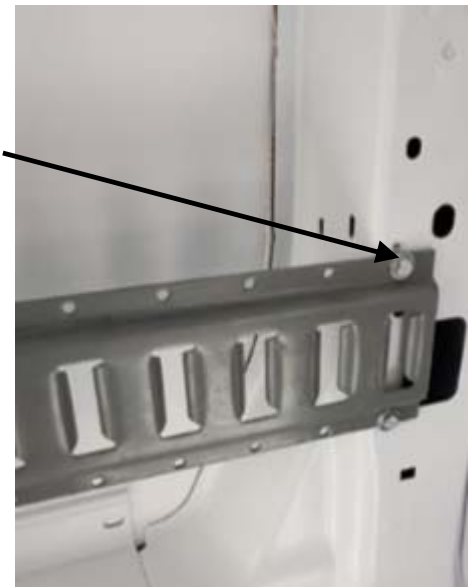
Position e-track section (45034-G) between the street side "C-Pillar" and "D-Pillar" as shown at left. Centerline of the e-track to be 41" inches above the vehicle floor.

Check both ends centerline dimensions prior to marking the four end support brackets (45593-G & 45594-G) mounting holes marks in the details views shown below.

Please note that in lower two detail views the lower plusnut location is hidden in view. Use permanent marker pen to mark all four mounting locations. Once all four holes have been marked set e-track section aside.



Mark/Drill  
4-pl



Install four 1/4-20UNC plusnuts (FAS0052) in marked holes, use a 3/8" diameter drill bit with a stop collar when drilling plusnut holes. See front of this instruction for proper plusnut installation.



## Step 05 "Location & Installation of the Upr Rr E-Trk Section and Brkts, continued"

Position two of the Center E-Track Support Bracket (45594-G) as shown in figure at right.

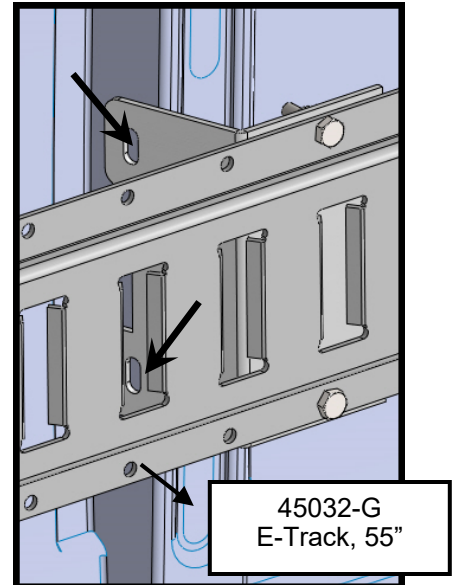
### Note

Fasteners should be hand tight only

Mark the center bracket plusnut locations using a permanent marker pen. Once all four holes have been marked remove fasteners at each end of the e-track section to the end support brackets and set aside at this time.



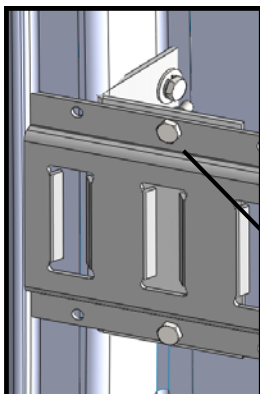
Install four 1/4-20UNC plusnuts (FAS0052) in marked holes, use a 3/8" diameter drill bit with a stop collar when drilling plusnut holes. See front of this instruction proper installation.



Once both plusnuts have been installed, reposition the e-track section and secure both ends to the "B" and "C" pillars. Next secure the center support bracket in place with two each of the listed fasteners.

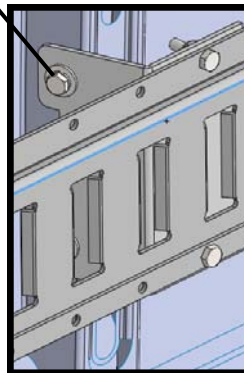
### Note

Tighten all fasteners, proceed to next step.

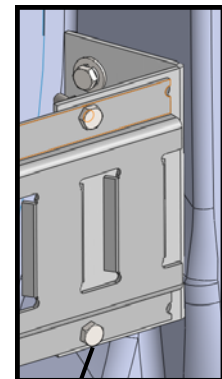


FAS0067  
FAS0060  
FAS0078  
4-pl

FAS0055  
FAS0078  
2-pl

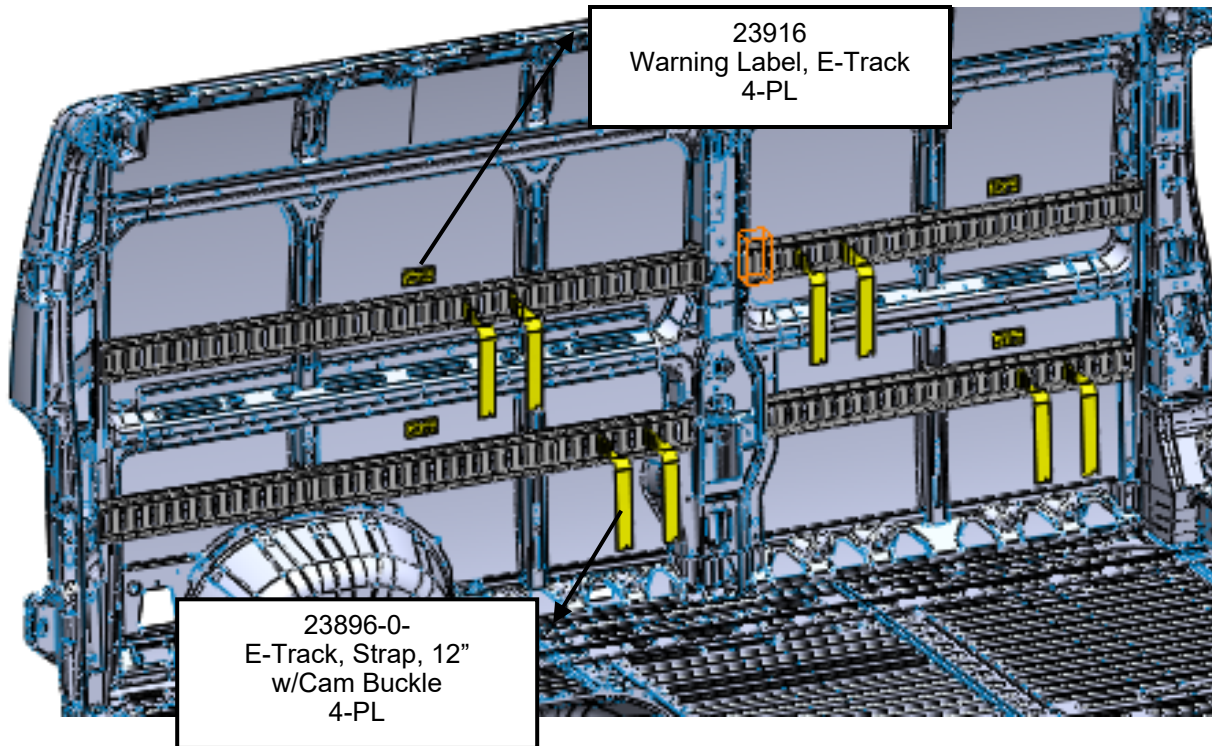


FAS0055  
FAS0078  
2-pl





## Step 06 “Apply warning labels and straps



PURCHASED COMPONENT KEY FEATURES	
DESCRIPTION OF REQUIREMENTS	
DIMENSIONAL REQUIREMENTS (AS SHOWN ON DRAWING)	
N/A	
LOAD/RATING REQUIREMENT	
N/A	
MATERIAL REQUIREMENT	
N/A	
PACKAGING REQUIREMENT	
N/A	
OTHER REQUIREMENTS	
<ul style="list-style-type: none"><li>2" x 12' STRONG POLYESTER WEBBING WITH 48" FIXED END</li><li>DESIGNED TO SECURE CARGO UP TO 833 LBS.</li><li>2" CAM BUCKLE WITH SPRING-ACTUATED E-FITTINGS ON BOTH ENDS</li></ul>	



THIS DRAWING IS THE PROPERTY OF ADRIAN STEEL COMPANY AND IS NOT TO BE USED IN ANY MANNER DETRIMENTAL TO THE INTERESTS OF ADRIAN STEEL COMPANY		PRINTED DOCUMENT IS UNCONTROLLED		Sheet 1 of 1
TOLERANCES & INSPECTION		PART / PRODUCT IDENTIFICATION		
UNLESS OTHERWISE SPECIFIED ALL BEND ANGLES ARE 90 DEGREES ALL DIMENSIONS ARE IN INCHES. REFERENCE DIMENSIONS (X.XXX) DO NOT REQUIRE INSPECTION		<div><div><div>AS</div><div>ADRIAN STEEL®</div></div><div>ADRIAN STEEL COMPANY 906 JAMES STREET, ADRIAN, MI 49221</div></div>		REVISION LEVEL <div>B</div>
FEATURES      HOLES/SLOTS      ANGLES 0.0 = ± .125      0.0 = ± .062      0° = ± 2° 0.00 = ± .062      0.00 = ± .031      0.0° = ± 1° 0.000 = ± .031      0.000 = ± .015		MAT'L USED: POLYESTER		DESIGNED BY: RG
Material Thickness: per ASTM Std. Weld Callouts per AWS		DESCRIPTION: E-TRAC,STRAP 12'W/CAM BKL		
TOLERANCES & INSPECTION		WEIGHT (Lbs.): 1.60 LBS	SEGMENT CODE: MAC	PART NUMBER: 23896-0
RELEASE & REVISIONS		PURCHASED COMPONENT		
INITIAL ECN: 4100		REFERENCED SUPPLIER AND/OR MANUFACTURER AUSTIN HARDWARE / OR EQUIVALENT		
CURRENT ECN: 25465		REFERENCED SUPPLIER AND/OR MANUFACTURER PART NUMBER CCCS-001		
ECN DESCRIPTION:		COLOR (ONLY LIST IF COLOR SPECIFIC) N/A		
CREATED PPDS SHEET FOR 23896-0		COMODITY ITEM (Y/N) (YES = ALL DIMENSIONS AND NOTES ARE REFERENCE) (NOTE: DIMENSIONS AND FEATURES MAY VARY FOR A COMODITY ITEM.) YES		
REVISED BY: WJA				