

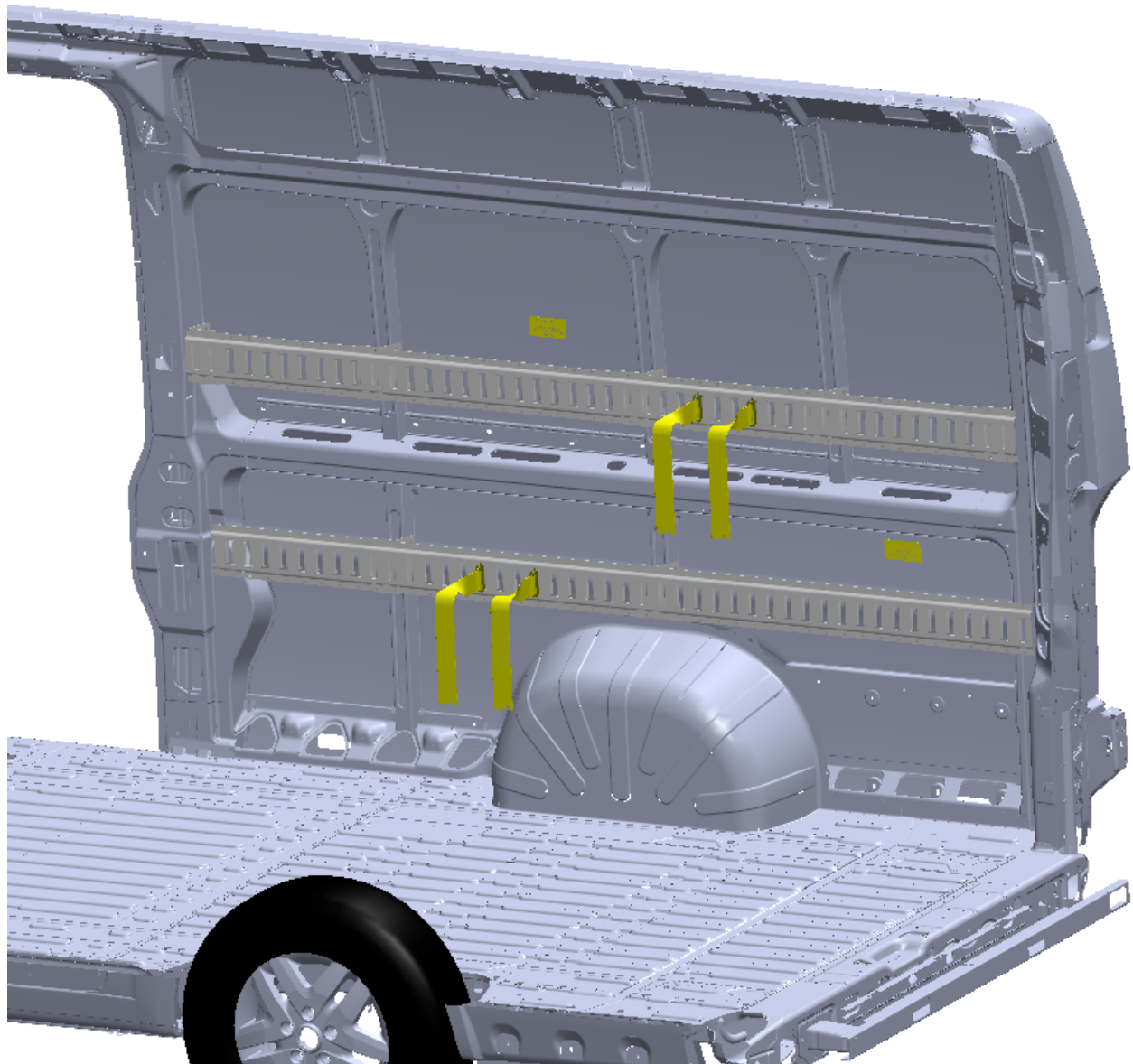


Introduction / Comments:

This curb side (passenger) e-track kit is designed to fit the 2014 Promaster 159" Extended High Roof.

Note:

It is advised that all fasteners used in this assembly and installation should be checked for tightness at the following intervals: @ 2-weeks and again @ 6-weeks of operation. This preventive maintenance step must be completed to ensure your product gives you long service life.



E-Track Kit (Curb Side) 2014 Promaster 159" Extended High Roof vehicle ET159PMEXC



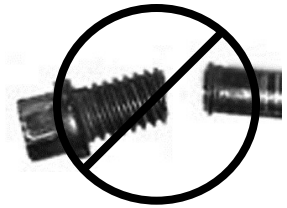
- PRECAUTIONS -



CAUTION



**THE USE OF AIR IMPACT TOOLS CAN
OVER-TORQUE FASTENERS AND
CAUSE FASTENER FAILURE!**



CAUTION



**ALL INSTALLATION HOLES SHOULD BE SEALED
WITH SILICON OR BUTYL SEALANT TO PREVENT
EXHAUST FUMES FROM ENTERING THE VEHICLE!**



DANGER



**INSPECT FOR FUEL TANK, FUEL LINES, BRAKE LINES, HIGH
VOLTAGE BATTERIES AND ELECTRICAL LINES PRIOR TO
DRILLING TO AVOID DAMAGING CRITICAL VEHICLE SYSTEMS
OR INJURY TO INSTALLER DURING INSTALLATION PROCESS!**



CAUTION



**TO AVOID DAMAGING THE VEHICLE ALWAYS
USE DRILL STOPS WHEN DRILLING ANY IN-
STALLATION HOLES!**



- IMPORTANT WARRANTY REQUIREMENTS -

1. SUBSTITUTING ADRIAN STEEL SPECIFIED FASTENERS FOR ASSEMBLY AND/OR INSTALLATION WILL VOID YOUR PRODUCT WARRANTY.
2. ALL HOLES DRILLED INTO VEHICLE SHOULD HAVE THE RAW METAL EDGES SEALED WITH A SELF-ETCHING PRIMER TO RESIST CORROSION AND POTENTIAL FASTENER POINT FAILURE.
3. ALL FASTENERS USED IN THE INSTALLATION OF THIS PRODUCT SHOULD BE TIGHTENED TO THE TORQUE(S) SPECIFIED IN THESE INSTRUCTIONS.
4. THESE INSTRUCTIONS SHOULD BE KEPT WITH THE VEHICLE.

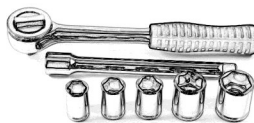
THE BASIC TOOLS NEEDED FOR MOST INSTALLATIONS



DRILL



DRILL BIT WITH
STOP



RATCHET, SOCKETS
AND/OR WRENCHES



SCREWDRIVERS



MEASURING TAPE

ADDITIONAL TOOLS MAY BE NEEDED FOR THIS INSTALLATION AND THEY WILL BE IDENTIFIED IN THE STEPS THAT FOLLOW.

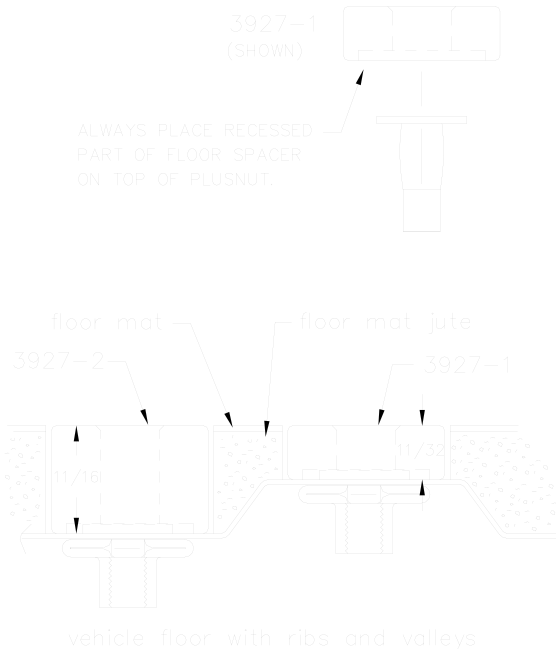


If your vehicle contains carpet or a rubber floor mat you will need to prepare the mounting location. Position the product to be installed into the vehicle and once you are satisfied with the mounting locations, mark the mounting locations. Using a 1-3/16" diameter carpet cutter (P/N: 31183-0). Select the appropriate floor spacers as shown in the illustration. Set those aside for use later into the installation process.

Using the correct drill bit size for the selected plusnut, drill the mounting holes in the vehicle sheet metal to prepare for installing the plusnuts.

If you are thru-bolting at any of the locations simply drill a hole that is 1/16" larger than the bolt size(s) for those locations.

Once you have drilled the holes into the vehicle, the raw metal edges should be sealed using a self-etching primer to resist corrosion and potential fastener point failure.



A PLUSNUT (RIVNUT) SETTING TOOL IS REQUIRED FOR PLUSNUT (RIVNUT) INSTALLATION AND IS SUPPLIED WITH THIS KIT. OR USE AN AIR POWERED PLUSNUT SETTING GUN.

1/4-20UNC Plusnut (FAS0052) Use 3/8" dia. drill w/stop

FAS0080 SCREW, HXHD, 1/4-20UNCx2.00", G8

FAS0067 WASHER, FLAT, 1/4"ID

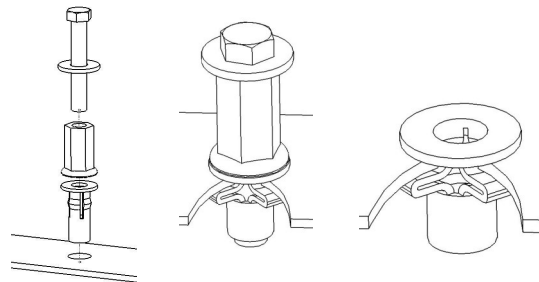
22200-0 PLUSNUT TOOL

5/16-18UNC Plusnut (FAS0091) Use 1/2" dia. drill w/stop

FAS0095 SCREW, HXHD, 5/16-18UNCx2.00", G8

FAS0086 WASHER, FLAT, 5/16"ID

22200-0 PLUSNUT TOOL



Place barrel of the plusnut body in sheet metal thru hole until flange is flush with sheet metal.

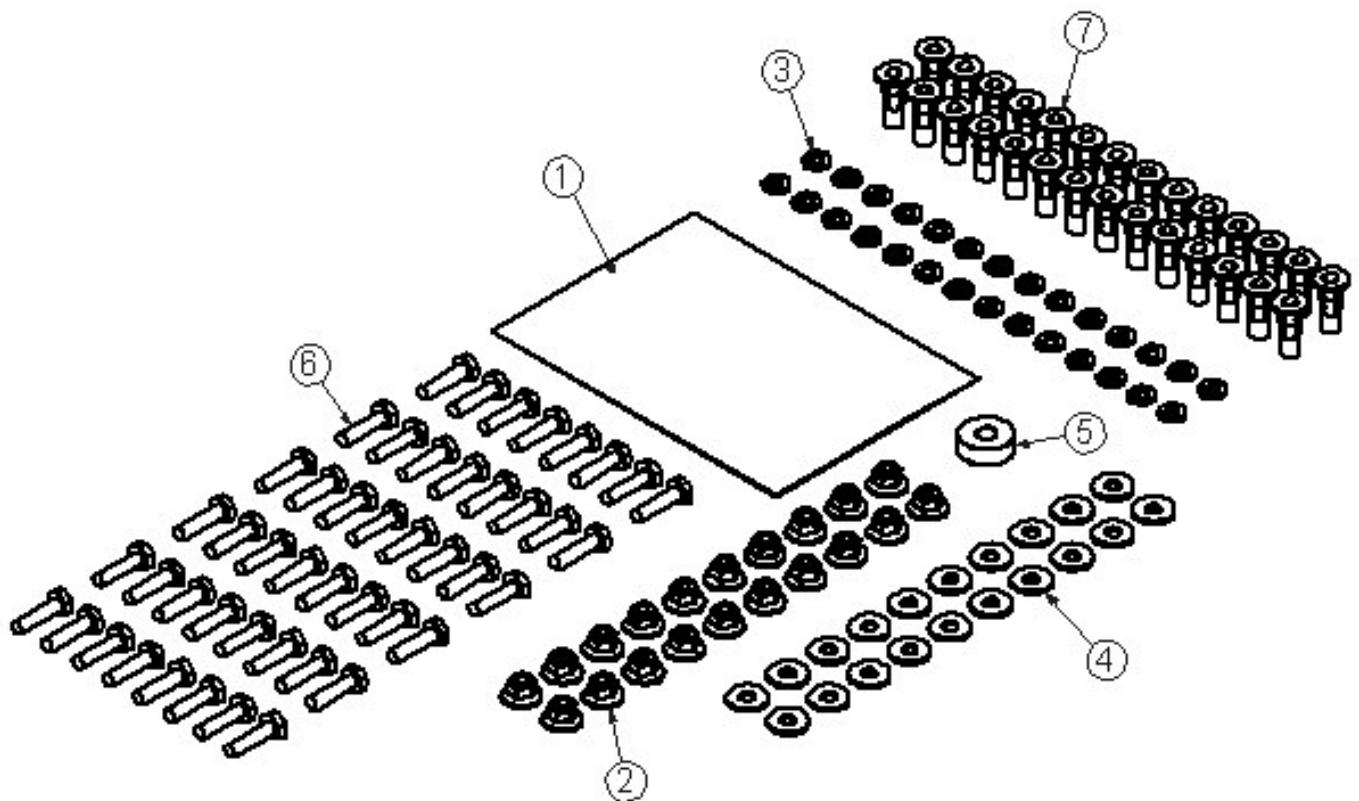
Using a 9/16" combination wrench of plusnut tool body and a second hand wrench, ratchet, or air tool, rotate the hex bolt head CW to draw plus nut flanges up (set the plusnut).



Installation and/or Assembly Fasteners
ET159PMCS

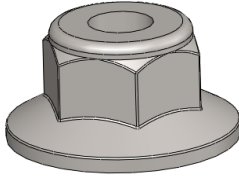
BAG45597

ITEM NO.	PART NUMBER	DESCRIPTION	BAG45597/QTY.
1	BAG0507-A	5" x 7" 3MIL AUTOBAG	1
2	FAS0055	Nut, Hex Flange, Nylock 1/4-20	20
3	FAS0060	Washer, Lock, Split, 1/4	28
4	FAS0067	Washer, Flat, 1/4	20
5	03927-1	Floor Spacer Short	1
6	FAS0078	Screw, Hex Hd, 1/4-20x1.00 Zn Plate, Grade 8	48
7	FAS0052	Plusnut, 1/4	28

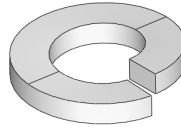




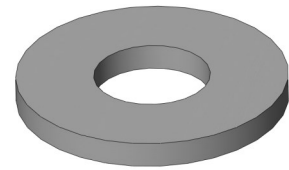
Individual Fasten Identification Sheet



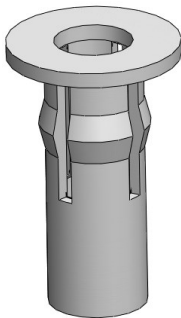
FAS0055
Nut, HxFIng,
Nylon Lock,
1/4-20UNC



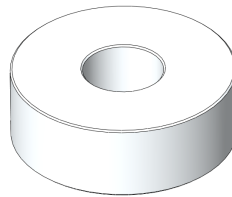
FAS0060
Washer, SplitLock,
1/4" ID



FAS0067
Washer, Flat, 1/4" ID
5/16 ID x 0.734" OD
x .065



FAS0052
Plusnut, PreBulbed,
5/16-18UNC



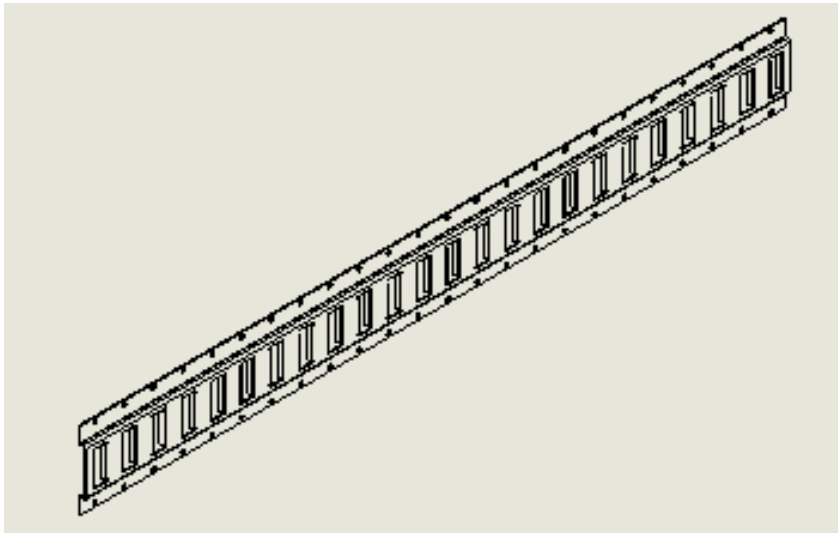
03927-1
Spacer, Floor,
1 1/32"



FAS0078
Screw, Hx Hd,
1/4-20UNC x 1"



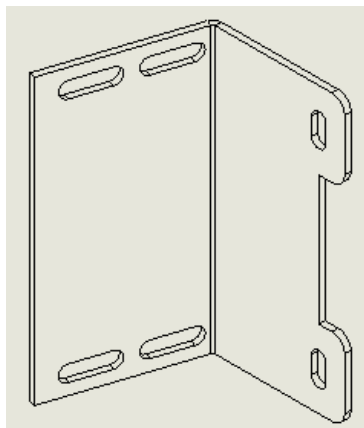
Installation and/or Assembly Hardware



ET159PMEXC

2987-0
E-TRACK, CUT TO 92"
Qty = 1

29687-0
E-TRACK, CUT TO 91"
Qty = 1

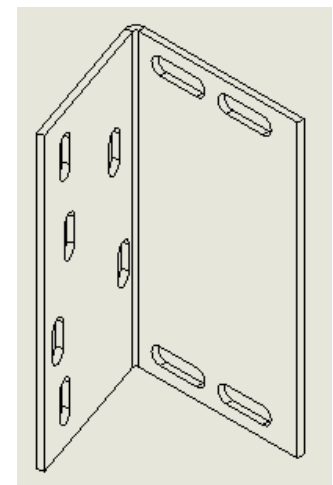


45594-G
BRACKET, CENTER SUPPORT,
E-TRACK, PROMASTER
Qty = 5

***** WARNING *****

E-TRAC TIE DOWN
WEIGHT IS LIMITED TO
200 LBS.

23916-0
WARNING LABEL, E-TRACK
Qty = 2



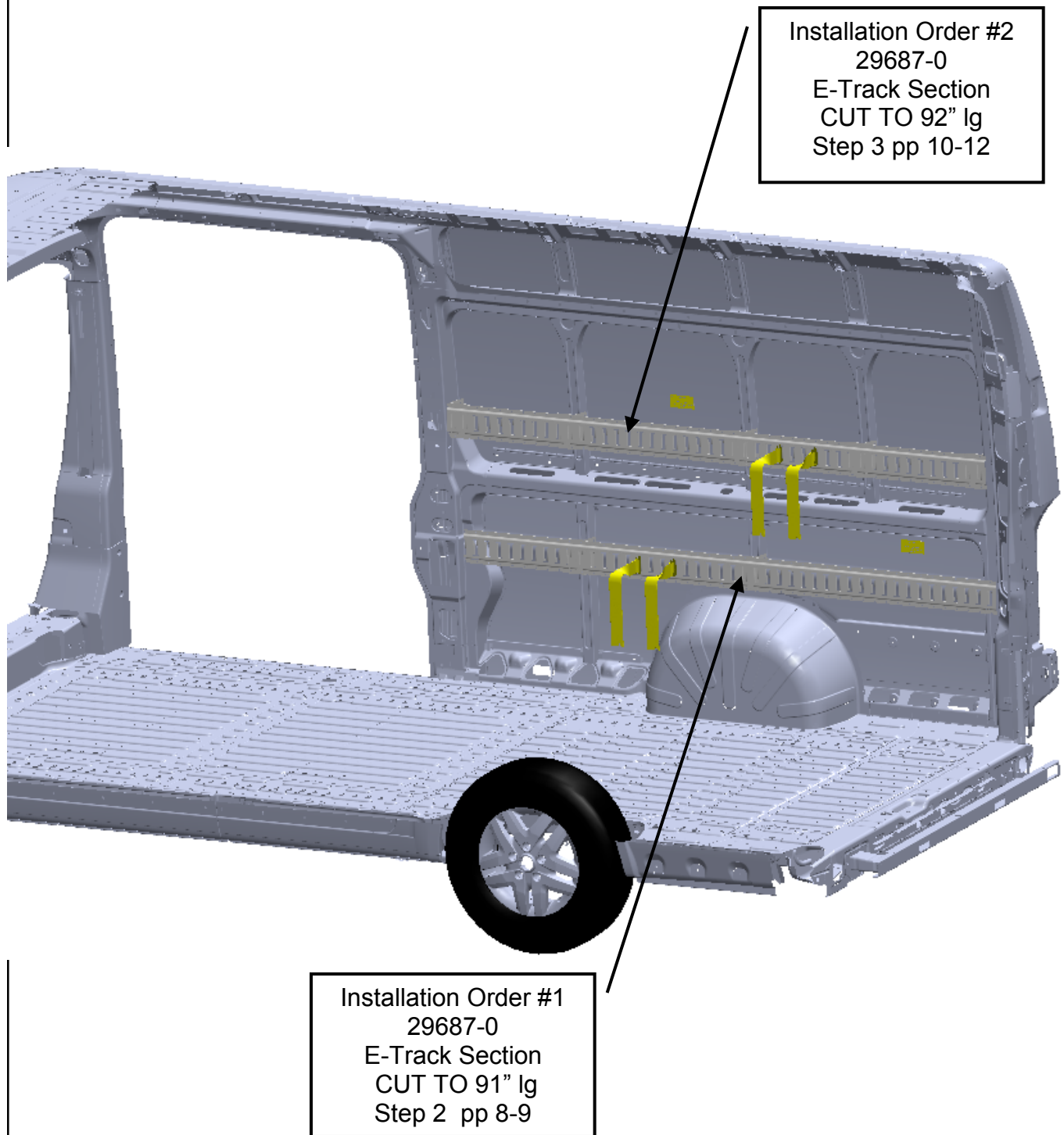
45593-G
BRACKET, END SUPPORT,
E-TRACK, PROMASTER
Qty = 2



23896-0
E-TRACK, STRAP, 12"
W/CAM BUCKLE
Qty = 2

**Step 01 “ Introduction Statement ”**

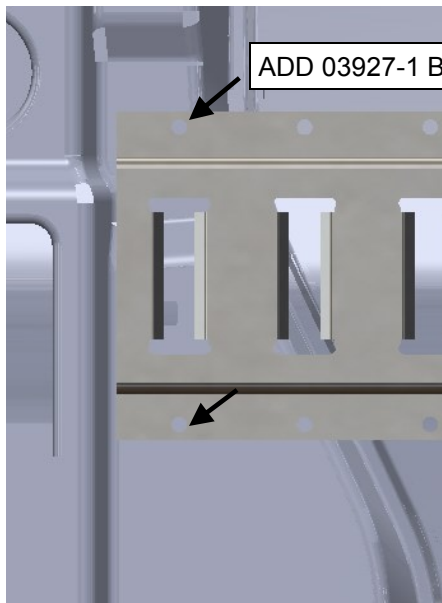
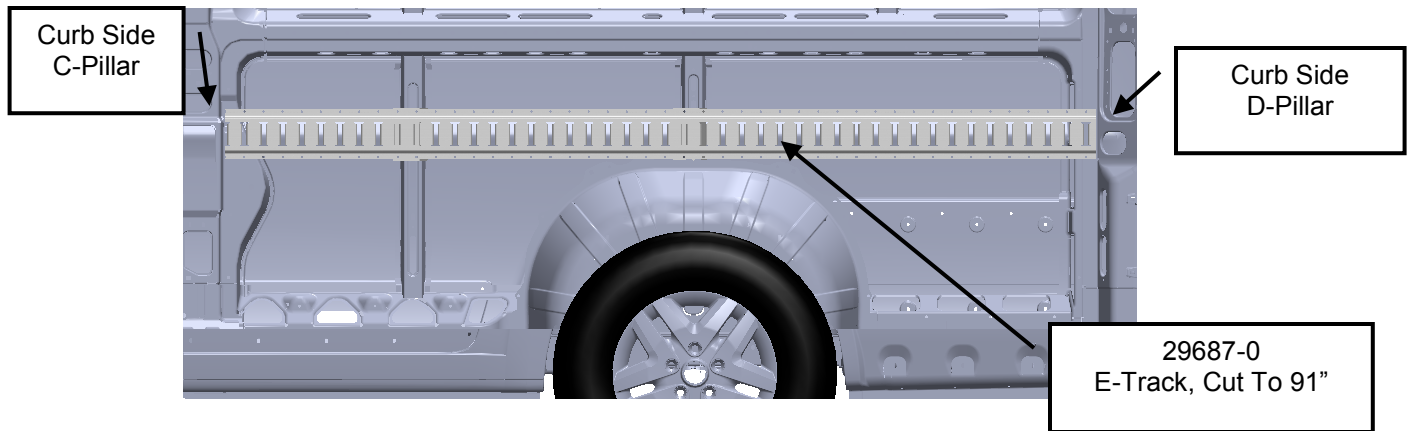
Installation of ET159PMEXC will involve attaching two separate track sections in suggested order listed below, but can be rearranged at any time. During installation please make use of the information in the beginning section of these instructions describing plusnut installation and all associated caution/warning notes.



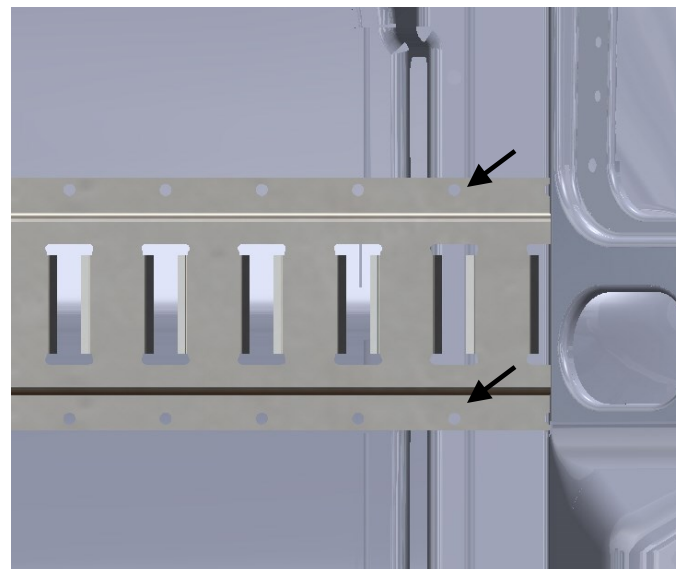


Step 02 “Location & Installation of the Lower E-Track Section and Brackets”

Position e-track section (29687-0 Cut to 91”) between the curb side “C-Pillar” and “D-Pillar” as shown at below. Centerline of the e-track to be 21 inches above the vehicle floor. Check both ends centerline dimensions prior to marking the four mounting holes marks in left and right details views shown below. Use permanent marker pen. Once all four holes have been marked set e-track section aside.



Mark/Drill
4-pl



Once all four plusnuts have been installed, reposition the e-track section and secure in place with four of the following fasteners.

FAS0060, FAS0067

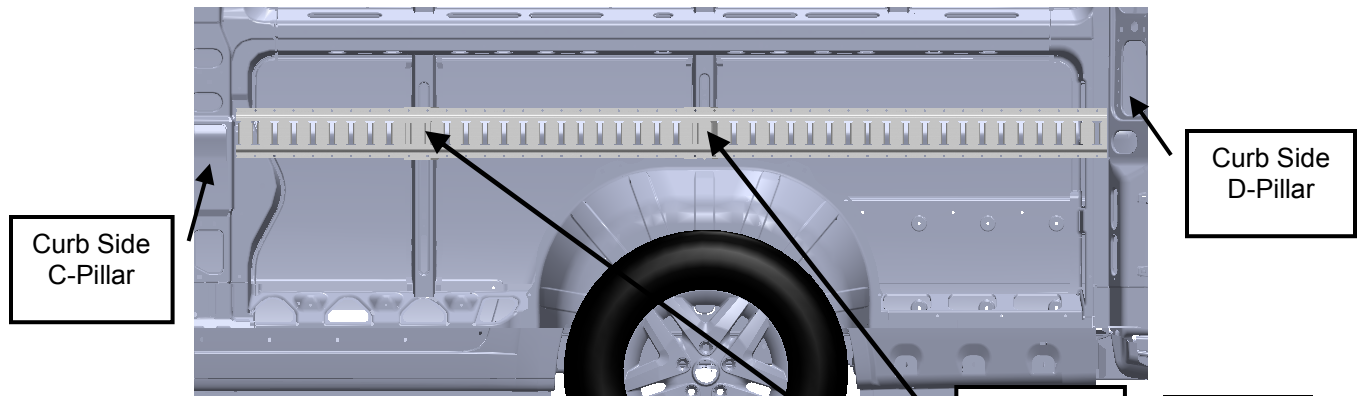
Note

Fasteners to be hand tight only.

Install four 1/4-20UNC plusnuts (FAS0052) in marked holes, use a 3/8” diameter drill bit with a stop collar when drilling plusnut holes. See front of this instruction for proper plusnut installation.



Step 02 “Location & Installation of the Lower E-Track and Brackets, continued”

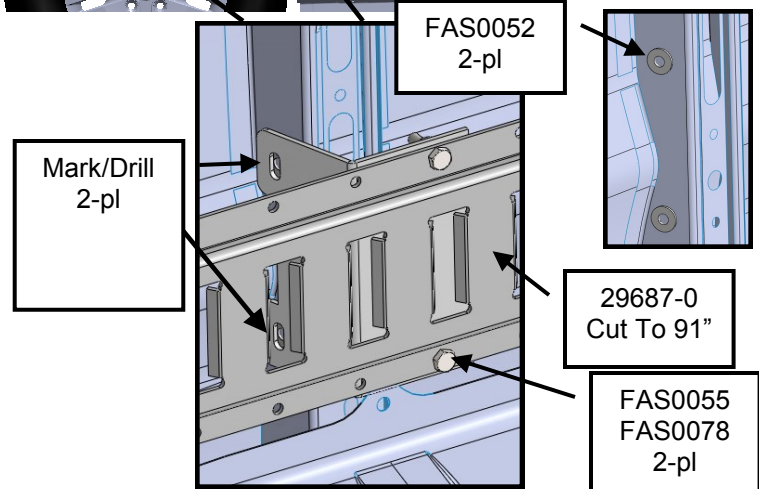


Position two Center E-Track Support Bracket (45594-G) as shown in figure at right. Secure bracket to e-track section with two each of the fasteners listed.

Note

Fasteners to be hand tight only

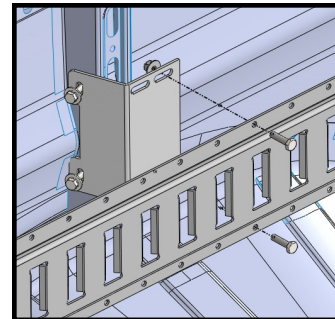
Mark the center bracket plusnut locations using a permanent marker pen. Once both holes have been marked remove fasteners at each end of the e-track section and set aside at this time.



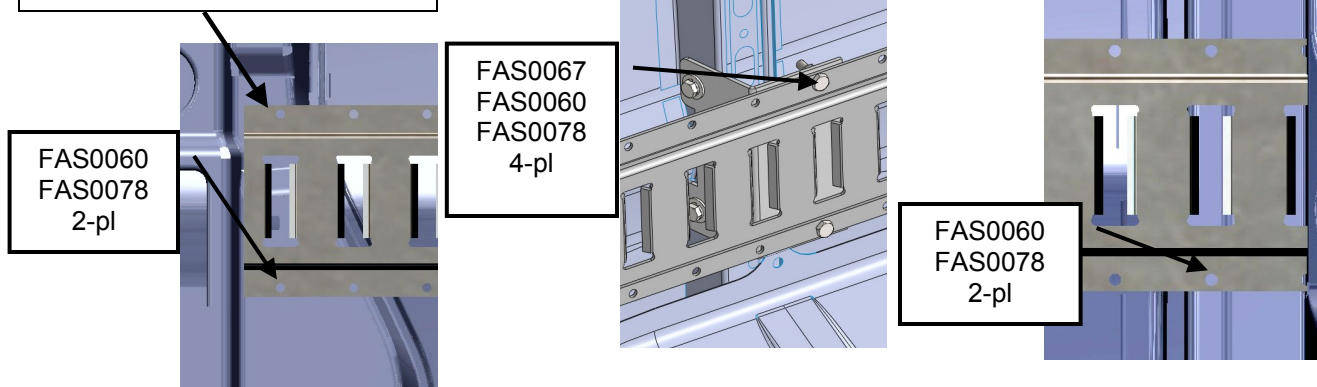
Install two 1/4-20UNC plusnuts (FAS0052) in marked holes, use a 3/8" diameter drill bit with a stop collar when drilling plusnut holes. See front of this instruction proper installation.

Once all four plusnuts have been installed, reposition the e-track section and secure both ends to the “B” and “C” pillars. Next secure the center support bracket in place with two each of the listed fasteners.

Note



ADD 03927-1 BEHIND E-TRACK

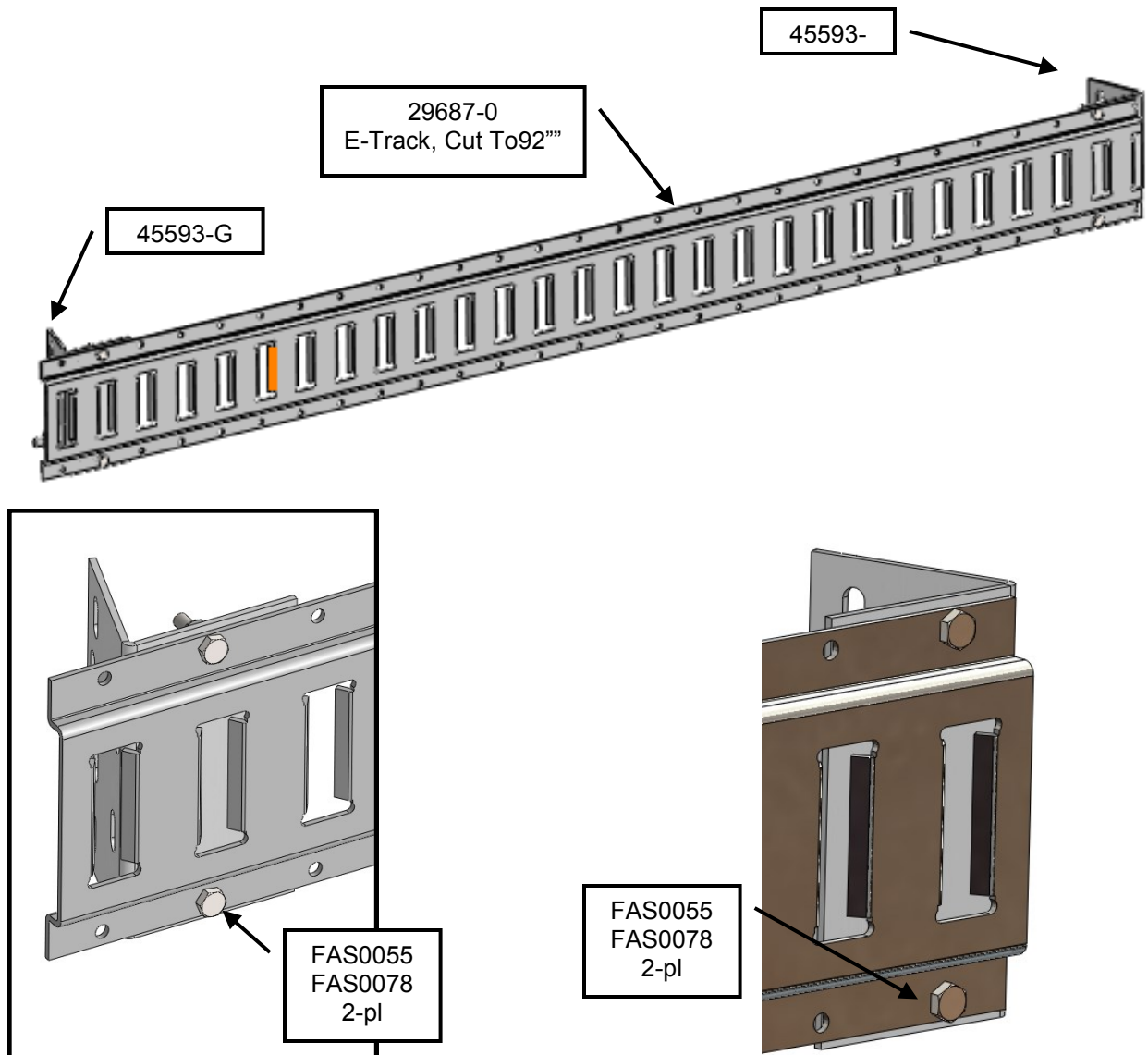


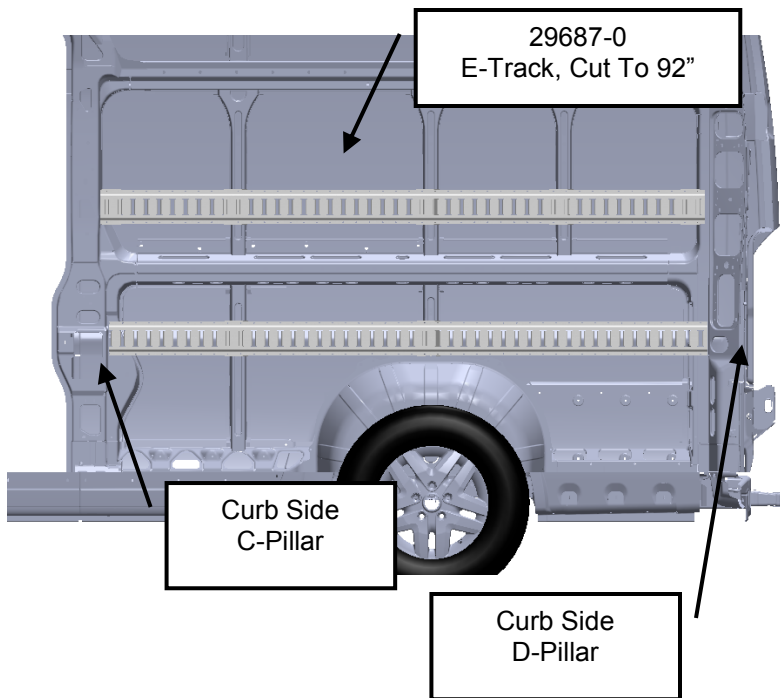


Step 03 "Location & Installation of the Upper E-Track Section and Brackets"

Secure two end support brackets (45593-G) to the e-track section (29687-0 Cut To 92") as shown in views below. Secure brackets to the e-track section with 4 of the listed fasteners.

Note

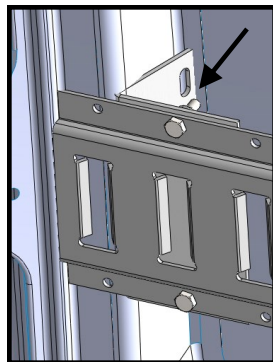


**Step 03 "Location & Installation of the Upper E-Track Section and Brackets, continued"**

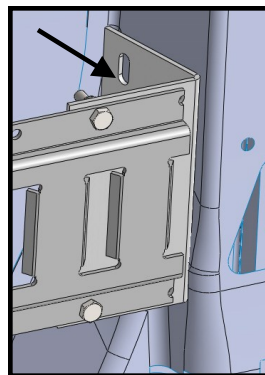
Position e-track section (29687-0 Cut To 92") between the street side "C-Pillar" and "D-Pillar" as shown at left. Center-line of the e-track to be 41 inches above the vehicle floor.

Check both ends centerline dimensions prior to marking the four end support brackets (45593-G & 45594-G) mounting holes marks in the details views shown below.

Please note that in lower two detail views the lower plusnut location is hidden in view. Use permanent marker pen to mark all four mounting locations. Once all four holes have been marked set e-track section aside.



Mark/Drill
4-pl



Install four 1/4-20UNC plusnuts (FAS0052) in marked holes, use a 3/8" diameter drill bit with a stop collar when drilling plusnut holes. See front of this instruction for proper plusnut installation.



Step 03 "Location & Installation of the Upper E-Track Section and Brackets, continued"

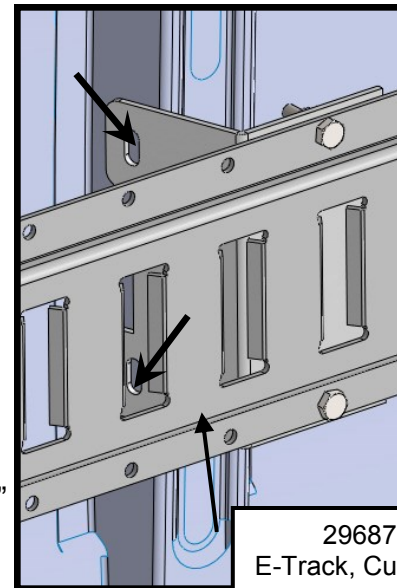
Position two of the Center E-Track Support Bracket (45594-G) as shown in figure at right.

Note

Fasteners should be hand tight only

Mark the center bracket plusnut locations using a permanent marker pen. Once all four holes have been marked remove fasteners at each end of the e-track section to the end support brackets and set

Install six 1/4-20UNC plusnuts (FAS0052) in marked holes, use a 3/8" diameter drill bit with a stop collar when drilling plusnut holes. See front of this instruction proper installation.



29687-0
E-Track, Cut To 92"

FAS0055
FAS0078
2-pl

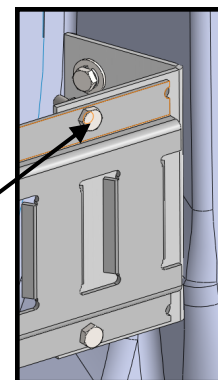
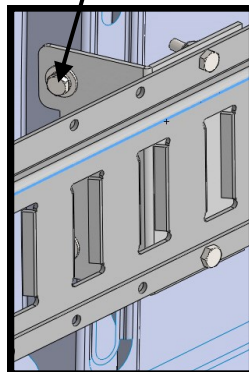
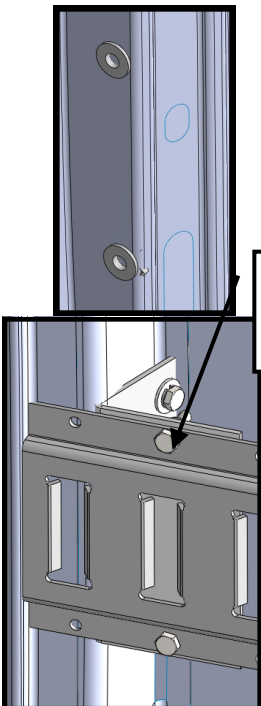
Once both plusnuts have been installed, reposition the e-track section and secure both ends to the "B" and "C" pillars. Next secure the center support bracket in place with two each of the listed fasteners.

Note

Tighten all fasteners, proceed to next step.

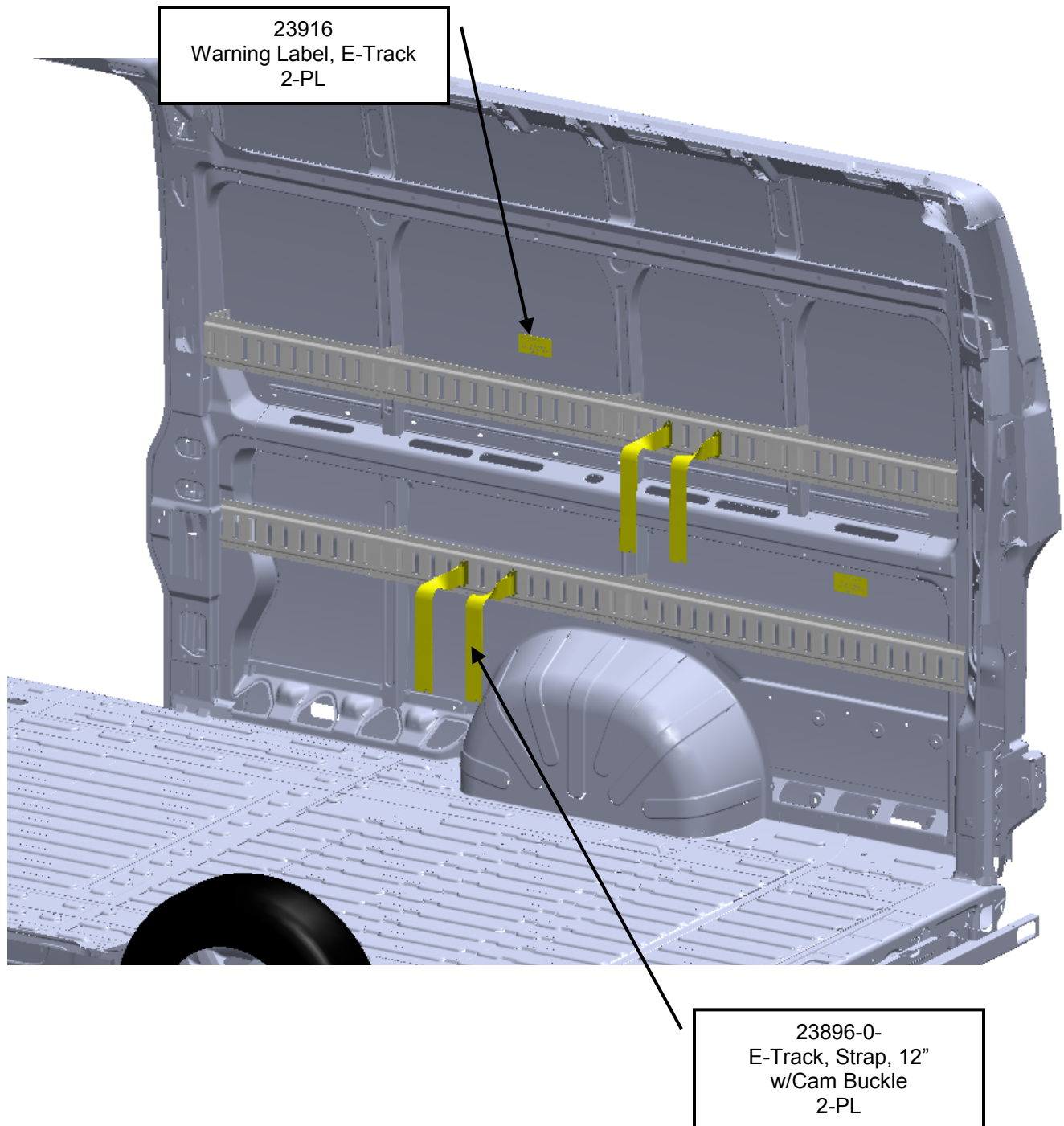
FAS0067
FAS0060
FAS0078
6pl

FAS0055
FAS0078
2-pl





Step 04 “Apply warning labels and straps”



PURCHASED
COMPONENT
KEY FEATURES

DESCRIPTION OF REQUIREMENTS
DIMENSIONAL REQUIREMENTS (AS SHOWN ON DRAWING) N/A
LOAD/RATING REQUIREMENT N/A
MATERIAL REQUIREMENT N/A
PACKAGING REQUIREMENT N/A
OTHER REQUIREMENTS <ul style="list-style-type: none">2" x 12' STRONG POLYESTER WEBBING WITH 48" FIXED ENDDESIGNED TO SECURE CARGO UP TO 833 LBS.2" CAM BUCKLE WITH SPRING-ACTUATED E-FITTINGS ON BOTH ENDS



THIS DRAWING IS THE PROPERTY OF ADRIAN STEEL COMPANY AND IS NOT TO BE USED IN ANY MANNER
DETRIMENTAL TO THE INTERESTS OF ADRIAN STEEL COMPANY

TOLERANCES & INSPECTION

UNLESS OTHERWISE SPECIFIED		
ALL BEND ANGLES ARE 90 DEGREES		
ALL DIMENSIONS ARE IN INCHES.		
REFERENCE DIMENSIONS (X.XXX) DO NOT REQUIRE INSPECTION		
FEATURES	HOLES/SLOTS	ANGLES
0.0 = ± .125	0.0 = ± .062	0° = ± 2°
0.00 = ± .062	0.00 = ± .031	0.0° = ± 1°
0.000 = ± .031	0.000 = ± .015	
Material Thickness: per ASTM Std. Weld Callouts per AWS		

RELEASE & REVISIONS

INITIAL ECN: 4100
CURRENT ECN: 25465
ECN DESCRIPTION: CREATED PPDS SHEET FOR 23896-0
REVISED BY: WJA


PURCHASED
COMPONENT

REFERENCED SUPPLIER AND/OR MANUFACTURER AUSTIN HARDWARE / OR EQUIVALENT
REFERENCED SUPPLIER AND/OR MANUFACTURER PART NUMBER CCCS-001
COLOR (ONLY LIST IF COLOR SPECIFIC) N/A
COMODITY ITEM (Y/N) (YES = ALL DIMENSIONS AND NOTES ARE REFERENCE) (NOTE: DIMENSIONS AND FEATURES MAY VARY FOR A COMODITY ITEM.) YES

PRINTED DOCUMENT IS UNCONTROLLED

Sheet 1 of 1

PART / PRODUCT IDENTIFICATION

		ADRIAN STEEL®		ADRIAN STEEL COMPANY 906 JAMES STREET, ADRIAN, MI 49221		REVISION LEVEL B	
MAT'L USED: POLYESTER				DESIGNED BY: RG			
DESCRIPTION: E-TRAC,STRAP 12"W/CAM BKL							
WEIGHT (Lbs.): 1.60 LBS		SEGMENT CODE: MAC			PART NUMBER: 23896-0		

ITEM DESCRIPTION: E-TRAC 128" OR 10'8"



MANUFACTURER: CARGOWALL LIMITED
MANUFACTURERS PART NUMBER: TR1250H1008GYCN

SPECIFICATIONS: E-TRAC PURCHASED TO LENGTH
128" OR 10' 8"

SPECIAL NOTES: GREY POWDERCOAT

SUPPLIED BY: THIS ITEM IS ADRIAN SUPPLIED!

PURCHASED PRODUCT DATA SHEET (PPDS)

THIS DRAWING/INFORMATION IS THE PROPERTY OF ADRIAN STEEL COMPANY AND IS NOT TO BE USED IN ANY MANNER THAT IS DETRIMENTAL TO THE INTEREST OF ADRIAN STEEL. COPYRIGHTS AND OR PATENTS THAT MAY BE THE PROPERTY OF APPLICABLE OWNERS MAY PROTECT INFORMATION AND/OR DRAWINGS OF SUPPLIED PRODUCTS.



ADRIAN STEEL

Cargo Management Solutions for Commercial Vehicles

906 JAMES STREET
ADRIAN, MI 49221
517-265-6194

WWW.ADRIANSTEEL.COM

⚠ CAUTION ⚠

WHEN INSTALLING EQUIPMENT IN OR ON VEHICLES CHECK FOR FUEL TANKS, FUEL LINES, CONTROL LINES AND ELECTRICAL WIRING BEFORE DRILLING! ALWAYS USE DRILL BITS WITH INTEGRAL STOPS WHENEVER POSSIBLE!

DRAWN BY
B. HENSON

DATE DRAWN
12/11/10

ECN NUMBER
13546

ECN DATE
12/13/10

PART WEIGHT
17.46 LBS.

REV. LEVEL
B

PART NUMBER

29687-0