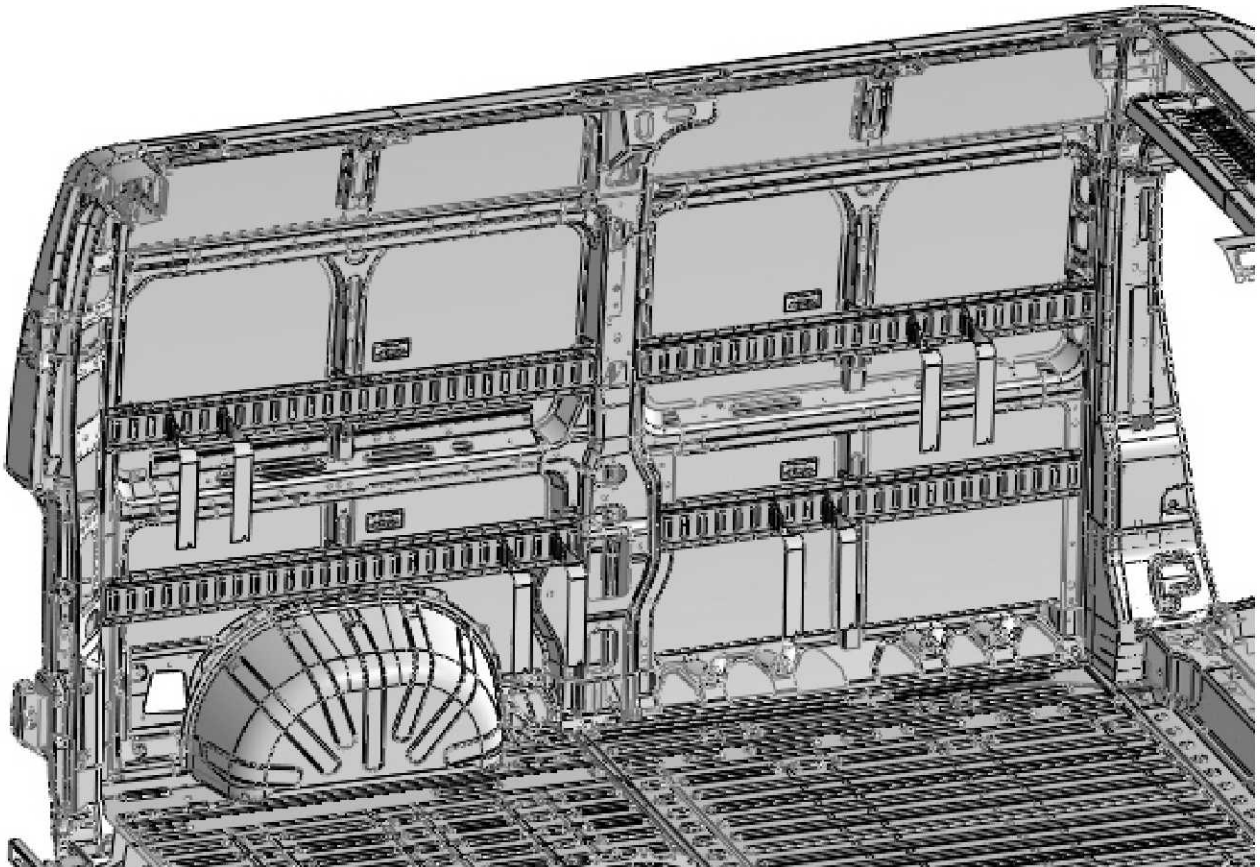


### Introduction / Comments:

This street side (drivers) e-track kit is designed to fit the 2014 Promaster 136" High Roof.

**Note:**

It is advised that all fasteners used in this assembly and installation should be checked for tightness at the following intervals: @ 2-weeks and again @ 6-weeks of operation. This preventive maintenance step must be completed to ensure your Partition gives you long service life.

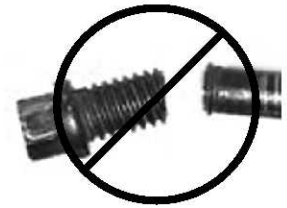


### **E-Track Kit (Street Side) 2014 Promaster 136" High Roof vehicle ET136PMSS**

## - PRECAUTIONS -





 **CAUTION**   
**THE USE OF AIR IMPACT TOOLS CAN  
OVER-TORQUE FASTENERS AND  
CAUSE FASTENER FAILURE!**



 **CAUTION**   
**ALL INSTALLATION HOLES SHOULD BE SEALED  
WITH SILICON OR BUTYL SEALANT TO PREVENT  
EXHAUST FUMES FROM ENTERING THE VEHICLE!**



 **DANGER**   
**INSPECT FOR FUEL TANK, FUEL LINES, BRAKE LINES, HIGH  
VOLTAGE BATTERIES AND ELECTRICAL LINES PRIOR TO  
DRILLING TO AVOID DAMAGING CRITICAL VEHICLE SYSTEMS  
OR INJURY TO INSTALLER DURING INSTALLATION PROCESS!**



 **CAUTION**   
**TO AVOID DAMAGING THE VEHICLE ALWAYS  
USE DRILL STOPS WHEN DRILLING ANY IN-  
STALLATION HOLES!**



## - IMPORTANT WARRANTY REQUIREMENTS -

1. SUBSTITUTING ADRIAN STEEL SPECIFIED FASTENERS FOR ASSEMBLY AND/OR INSTALLATION WILL VOID YOUR PRODUCT WARRANTY.
2. ALL HOLES DRILLED INTO VEHICLE SHOULD HAVE THE RAW METAL EDGES SEALED WITH A SELF-ETCHING PRIMER TO RESIST CORROSION AND POTENTIAL FASTENER POINT FAILURE.
3. ALL FASTENERS USED IN THE INSTALLATION OF THIS PRODUCT SHOULD BE TIGHTENED TO THE TORQUE(S) SPECIFIED IN THESE INSTRUCTIONS.
4. THESE INSTRUCTIONS SHOULD BE KEPT WITH THE VEHICLE.

### THE BASIC TOOLS NEEDED FOR MOST INSTALLATIONS



DRILL



DRILL BIT WITH  
STOP



RATCHET, SOCKETS  
AND/OR WRENCHES



SCREWDRIVERS



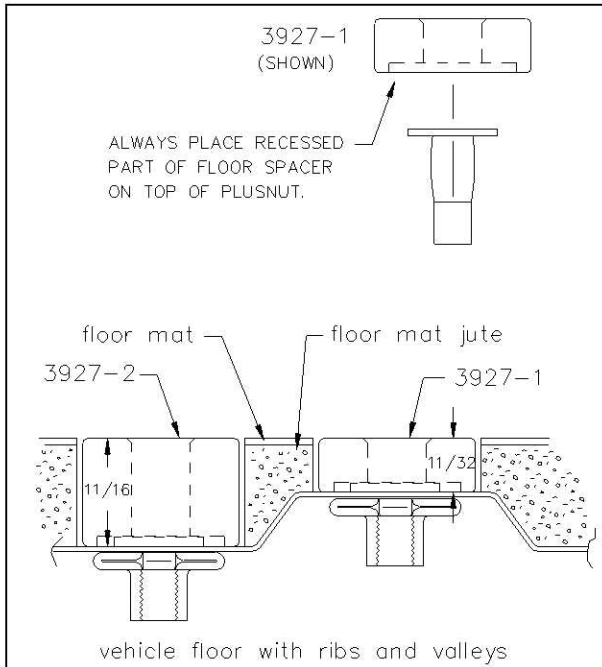
MEASURING TAPE

ADDITIONAL TOOLS MAY BE NEEDED FOR THIS INSTALLATION AND THEY WILL BE IDENTIFIED IN THE STEPS THAT FOLLOW.

If your vehicle contains carpet or a rubber floor mat you will need to prepare the mounting location. Position the product to be installed into the vehicle and once you are satisfied with the mounting locations, mark the mounting locations. Using a 1-3/16" diameter carpet cutter (P/N: 31183-0). Select the appropriate floor spacers as shown in the illustration. Set those aside for use later into the installation process. Using the correct drill bit size for the selected plusnut, drill the mounting holes in the vehicle sheet metal to prepare for installing the plusnuts.

If you are thru-bolting at any of the locations simply drill a hole that is 1/16" larger than the bolt size(s) for those locations.

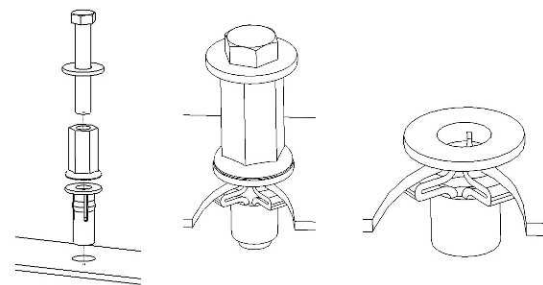
Once you have drilled the holes into the vehicle, the raw metal edges should be sealed using a self-etching primer to resist corrosion and potential fastener point failure.



A PLUSNUT (RIVNUT) SETTING TOOL IS REQUIRED FOR PLUSNUT (RIVNUT) INSTALLATION AND IS SUPPLIED WITH THIS KIT. OR USE AN AIR POWERED PLUSNUT SETTING GUN.

1/4-20UNC Plusnut (FAS0052) Use 3/8" dia. drill w/stop  
FAS0080 SCREW, HXHD, 1/4-20UNCx2.00", G8  
FAS0067 WASHER, FLAT, 1/4"ID  
22200-0 PLUSNUT TOOL

5/16-18UNC Plusnut (FAS0091) Use 1/2" dia. drill w/stop  
FAS0095 SCREW, HXHD, 5/16-18UNCx2.00", G8  
FAS0086 WASHER, FLAT, 5/16"ID  
22200-0 PLUSNUT TOOL

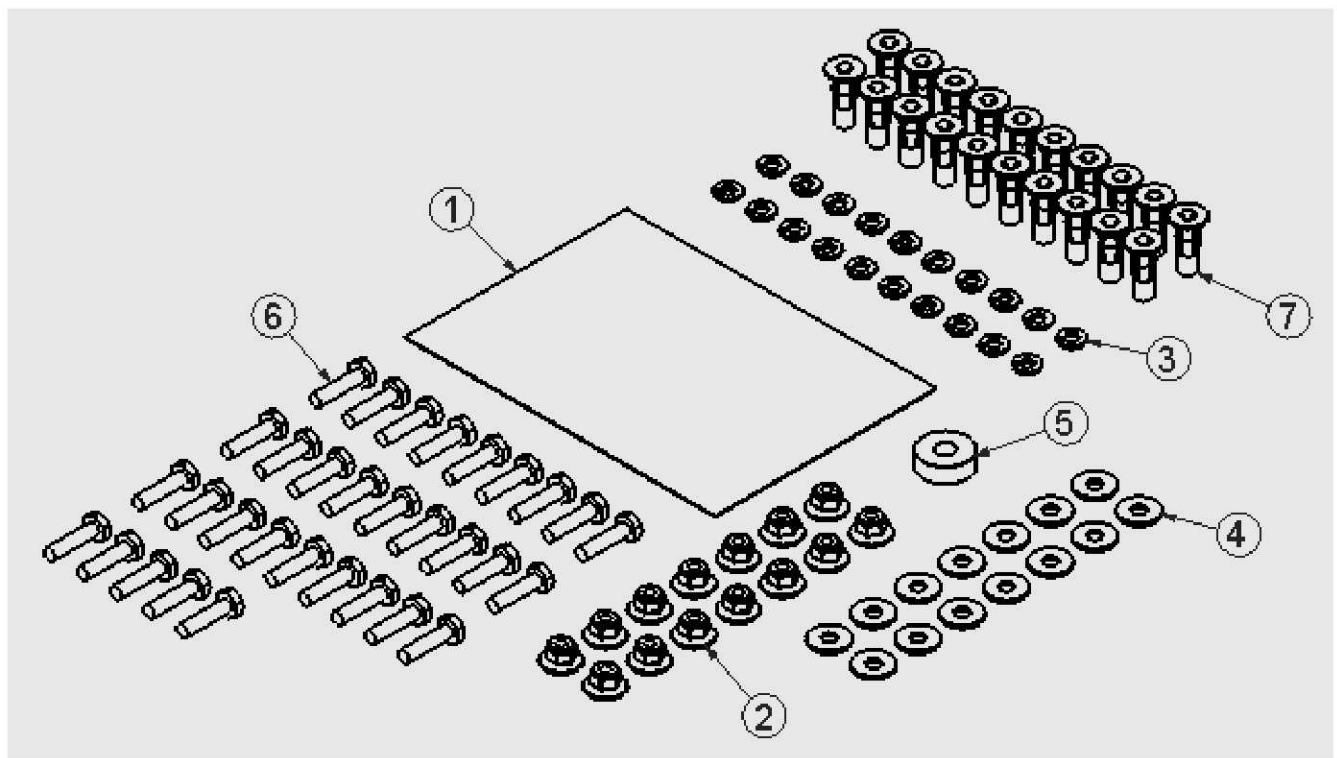


Place barrel of the plusnut body in sheet metal thru hole until flange is flush with sheet metal.

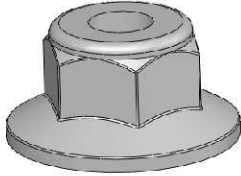
Using a 9/16" combination wrench of plusnut tool body and a second hand wrench, ratchet, or air tool, rotate the hex bolt head CW to draw plus nut flanges up (set the plusnut).

**Installation and/or Assembly Fasteners**

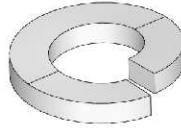
ITEM NO.	PART NUMBER	DESCRIPTION	BAG45595/QTY.
1	BAG0507-A	5" x 7" 3MIL AUTOBAG	1
2	FAS0055	Nut, Hex Flange, Nylock 1/4-20	14
3	FAS0060	Washer, Lock, Split, 1/4	20
4	FAS0067	Washer, Flat, 1/4	14
5	03927-1	Floor Spacer Short	1
6	FAS0078	Screw, Hex Hd, 1/4-20x1.00 Zn Plate, Grade 8	32
7	FAS0052	Plusnut, 1/4	20



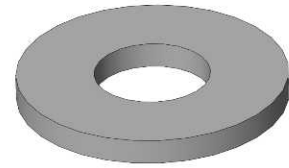
Individual Fasten Identification Sheet



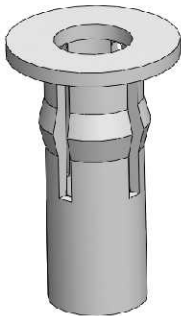
FAS0055  
Nut, HxFIng,  
Nylon Lock,  
1/4-20UNC



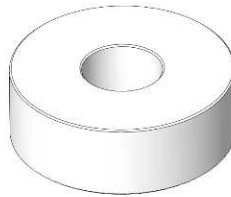
FAS0060  
Washer, SplitLock,  
1/4" ID



FAS0067  
Washer, Flat, 1/4" ID  
5/16 ID x 0.734" OD  
x .065



FAS0052  
Plusnut, PreBulbed,  
5/16-18UNC

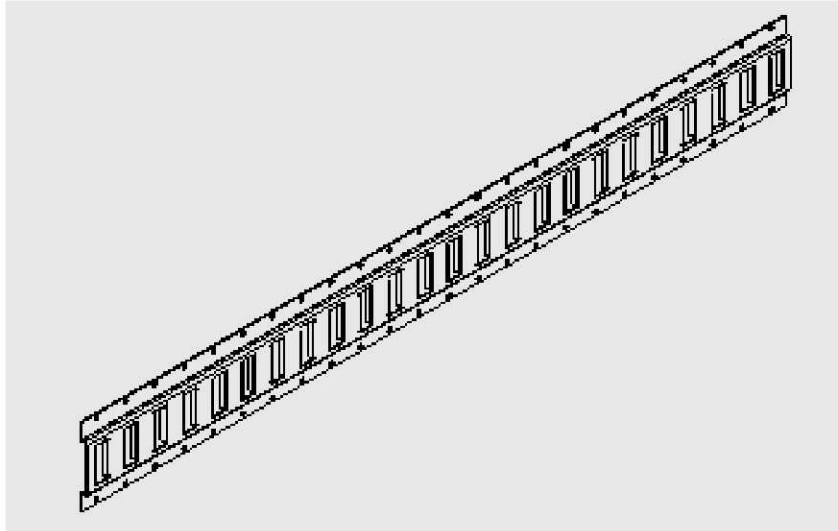


03927-1  
Spacer, Floor,  
11/32"



FAS0078  
Screw, Hx Hd,  
1/4-20UNC x 1"

## Installation and/or Assembly Hardware

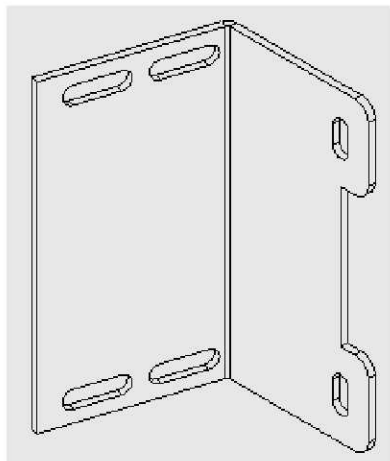


45030-G  
E-TRACK, CUT TO 48"  
Qty = 1

45031-G  
E-TRACK, CUT TO 52"  
Qty = 1

45032-G  
E-TRACK, CUT TO 53.5"  
Qty = 1

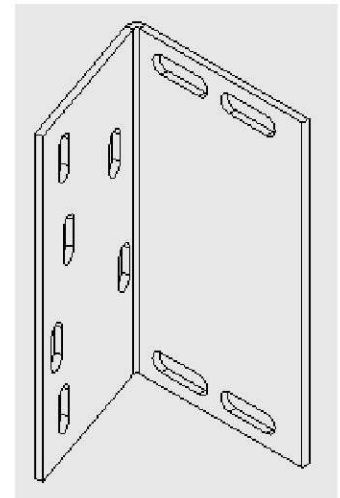
45033-G  
E-TRACK, CUT TO 55"  
Qty = 1



45594-G  
BRACKET, CENTER SUPPORT,  
E-TRACK, PROMASTER  
Qty = 4

\*\*\*\*\* WARNING \*\*\*\*\*  
  
E-TRAC TIE DOWN  
WEIGHT IS LIMITED TO  
200 LBS.

23916-0  
WARNING LABEL, E-TRACK  
Qty = 4



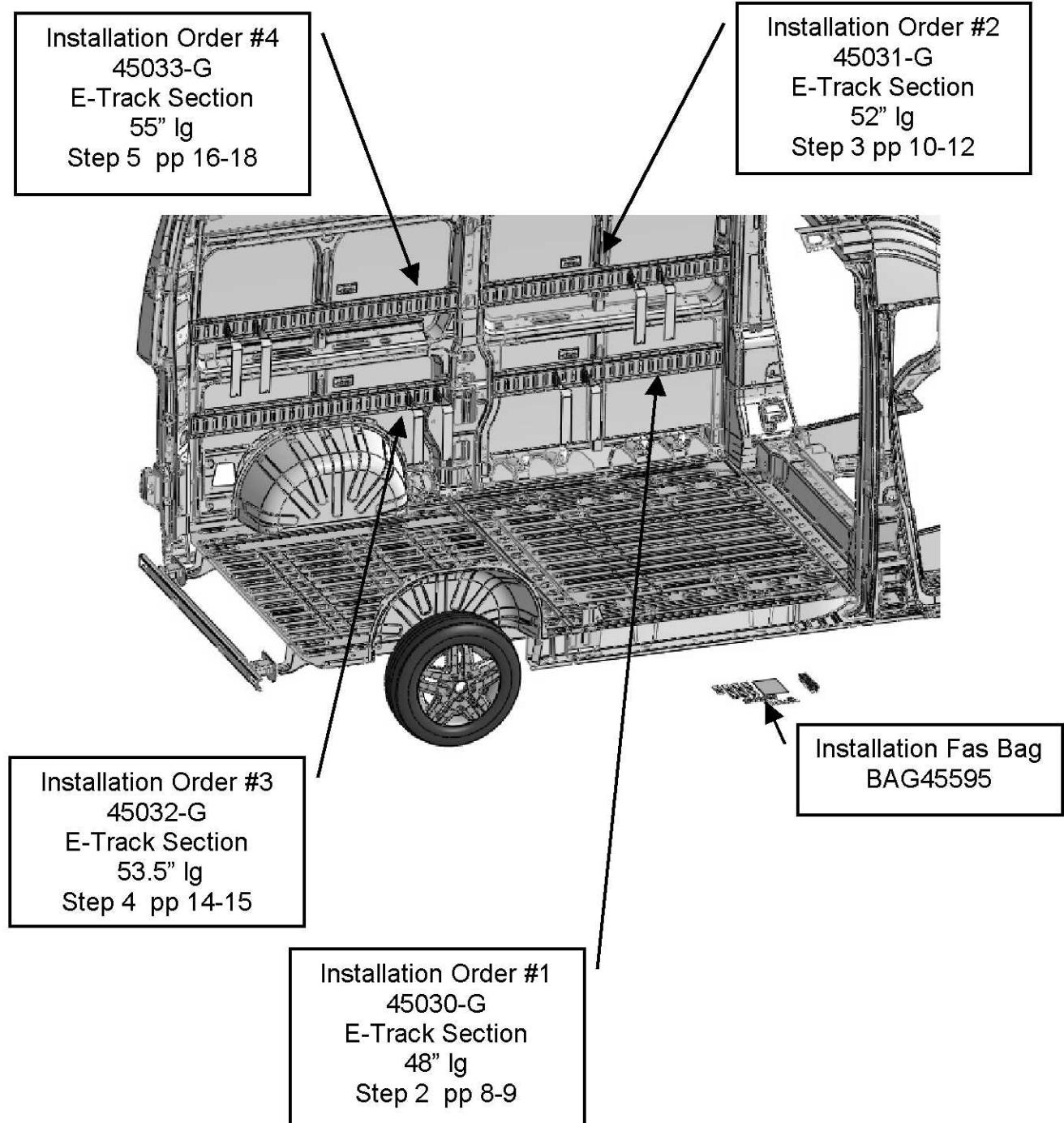
45593-G  
BRACKET, END SUPPORT,  
E-TRACK, PROMASTER  
Qty = 4



23896-0  
E-TRACK, STRAP, 12"  
W/CAM BUCKLE  
Qty = 4

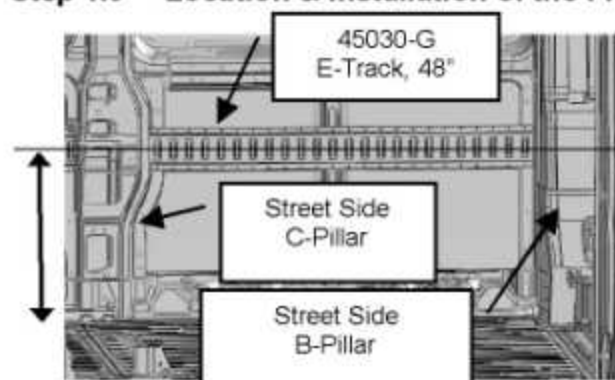
## Step 0.0 “ Introduction Statement ”

Installation of ET136PMSS will involve attaching four separate track sections in suggested order listed below, but can be rearranged at any time. During installation please make use of the information in the beginning section of these instructions describing plusnut installation and all associated caution/warning notes.



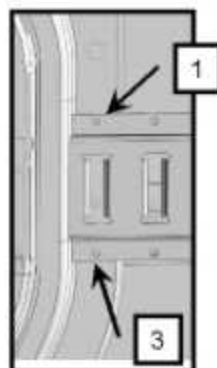


## Step 1.0 "Location & Installation of the Front Lower E-Track Section"



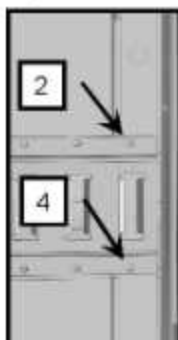
### Step 1.1

Position e-track section (45030-G) between the street side "B-Pillar" and "C-Pillar" as shown at left. Centerline of the e-track to be 21 inches above the vehicle floor. Check centerline dimensions prior to marking the upper two (#1 & #2) mounting holes. Use permanent marker pen. Once both holes have been marked set e-track section aside.



### Step 1.2

Drill this hole (#1) first (shown in left detail view) using a 3/8" diameter drill bit with a stop collar. Next install one 1/4-20UNC plusnut (FAS0052) as outlined at the beginning of these instructions. Secure the e-track section with one each of the following fasteners (FAS0078 & FAS0060), do not fully tighten at this time. Note, you will have to physically support the e-track rail in position for the next step.

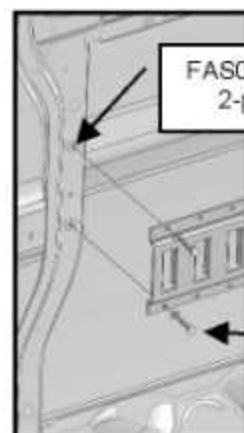


### Step 1.3

While firmly holding the e-track section at the correct height, drill the second hole (#2) shown in left detail view using a 1/4" diameter drill bit with a stop collar. The e-track section will serve as a drill template to accurately locate mounting hole. Gently reposition the e-track section to gain access for plusnut installation. Enlarge hole to 3/8" diameter (use drill bit w/stop collar). Next install one 1/4-20UNC plusnut (FAS0052) as outlined at the beginning of these instructions. Reposition and secure the e-track section with one each of the following fasteners (FAS0078 & FAS0060), do not fully tighten at this time.

### Step 1.4

Drill the lower two e-track mounting holes (#3 & #4) using a 1/4" diameter drill bit with a stop collar. The e-track section will serve as a drill template to accurately locate the remaining two holes. Remove the upper two fasteners securing the e-track section to the B & C pillars and set aside at this time. Enlarge both holes to 3/8" diameter (use drill bit w/stop collar). Next install two 1/4-20UNC plusnut (FAS0052) as outlined at the beginning of these instructions.



### Step 1.5

Once all four plusnuts have been installed, reposition the e-track section and secure in place with four of the fasteners listed in bottom two views

#### Note

Fasteners to be hand tight only.

FAS0060  
FAS0078  
2-pl

FAS0060  
FAS0078  
2-pl





## Step 1.0 "Location & Installation of the Front Lower E-Track Section, continued"

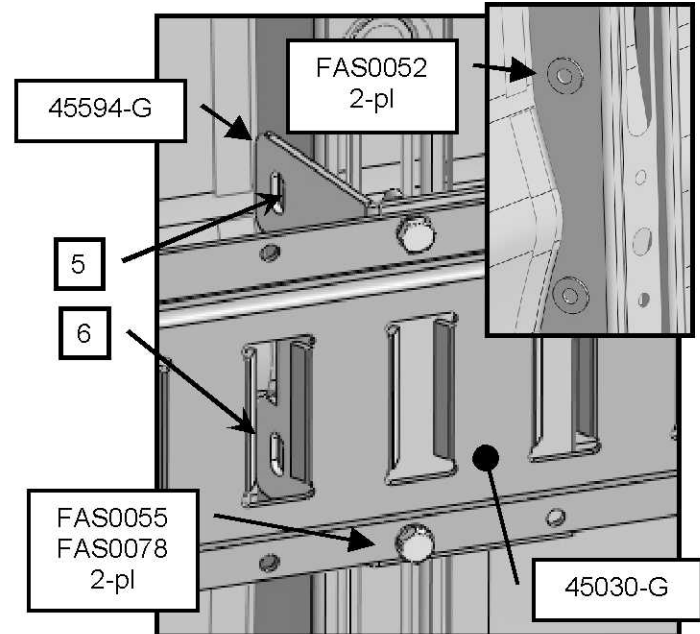
### Step 1.6

Position the Center E-Track Support Bracket (45594-G) as shown in figure at right. Secure bracket to e-track section with two each of the fasteners listed.

#### Note

Fasteners to be hand tight only

Mark the center bracket plusnut locations (#5 & #6) using a permanent marker pen. Once both holes have been marked remove fasteners at each end of the e-track section and set track section aside at this time.



### Step 1.7

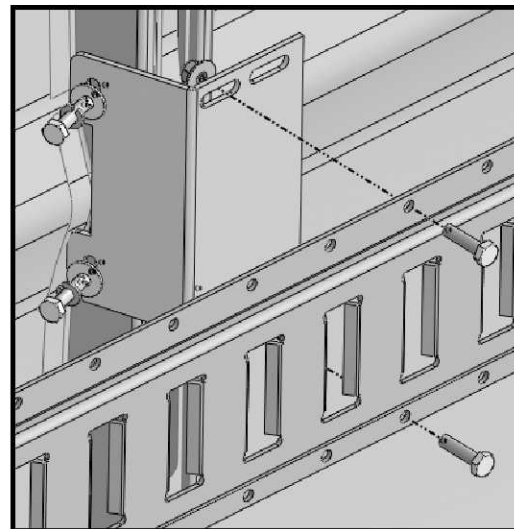
Install two 1/4-20UNC plusnuts (FAS0052) in marked holes, use a 3/8" diameter drill bit with a stop collar when drilling plusnut holes. See front of this instruction proper installation.

### Step 1.8

Once both plusnuts have been installed, reposition the e-track section and secure both ends to the "B" and "C" pillars. Next secure the center support bracket in place with two each of the listed fasteners.

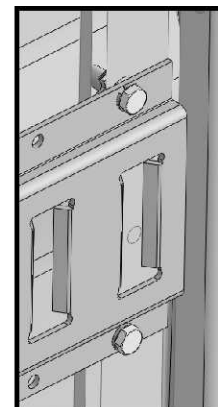
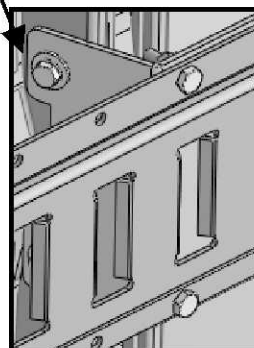
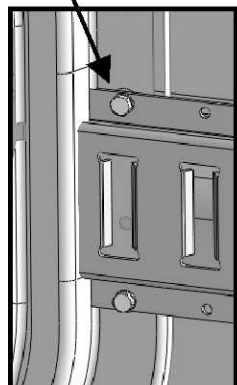
#### Note

Tighten all fasteners, proceed to next step.



FAS0060  
FAS0078  
Typ

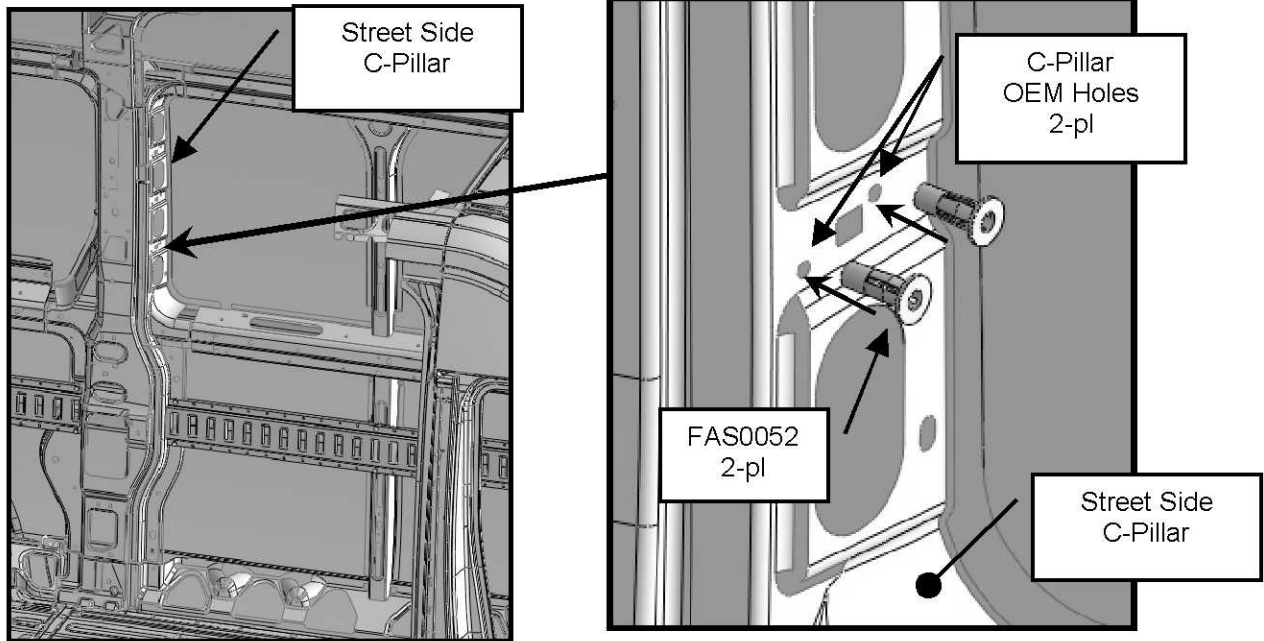
FAS0067  
FAS0060  
FAS0078  
2-pl



## Step 2.0 "Location & Installation of the Upper E-Track Section End Mounting Brackets"

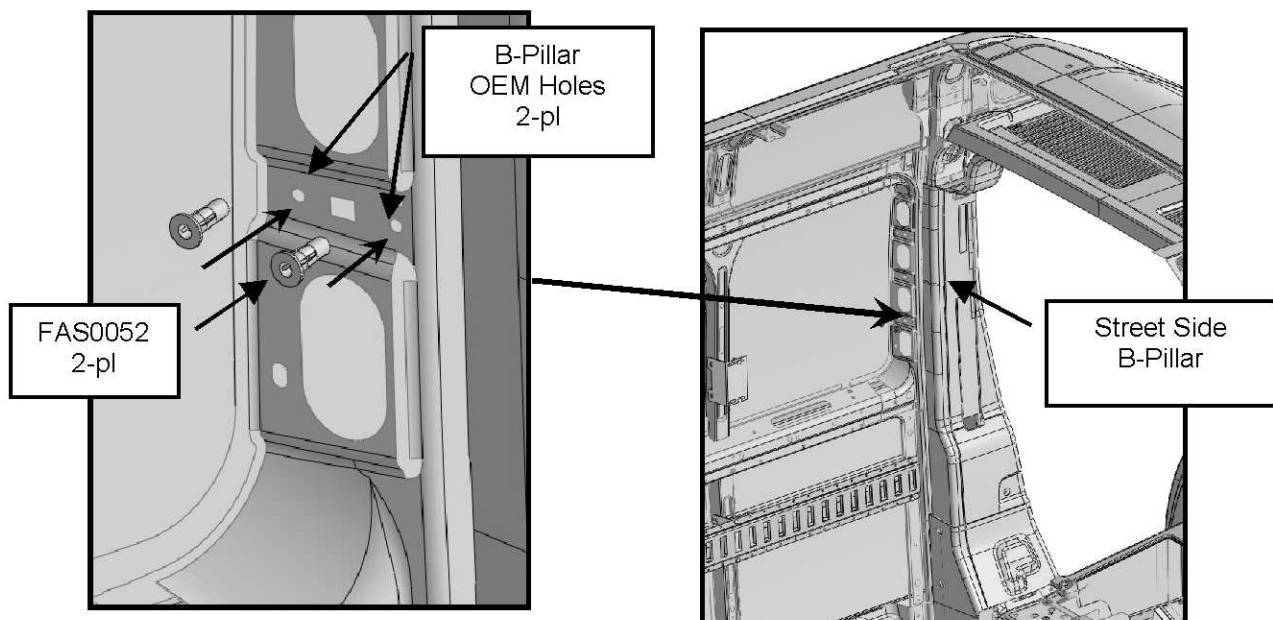
### Step 2.1

Install two 1/4-20UNC plusnuts (FAS0052) in indicated holes in the street side "C-Pillar", use a 3/8" diameter drill bit with a stop collar when enlarging existing OEM sheet metal holes shown in the right hand view. See front of this instruction for proper plusnut installation.



### Step 2.2

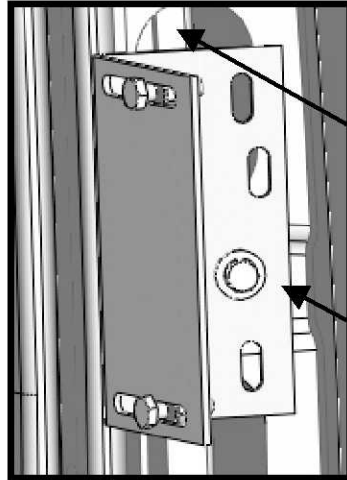
Install two 1/4-20UNC plusnuts (FAS0052) in indicated holes in the street side "B-Pillar", use a 3/8" diameter drill bit with a stop collar when enlarging existing OEM sheet metal holes shown in the right hand view. See front of this instruction for proper plusnut installation.



## Step 2.0 "Location & Installation of the Frnt Uptr E-Trk and Brks, continued"

### Step 2.3

Secure the two end bracket to the B & C-pillars with the fasteners listed in detail views. Note part orientation and slot/fastener locations.

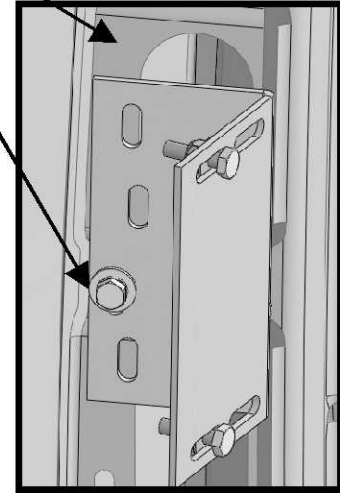


Street Side  
C-Pillar

FAS0067  
FAS0060  
FAS0078  
2-pl

Street Side  
B-Pillar

FAS0067  
FAS0060  
FAS0078  
2-pl

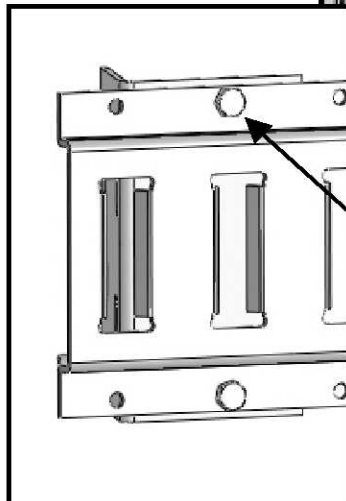


### Step 2.4

Position upper front e-track (45031-G) section between the street side "B-Pillar" and "C-Pillar" as shown in lower detail view. Centerline of the e-track to be approx. 41 inches above the vehicle floor. Secure the end brackets to the "B-Pillar" and "C-Pillar" as shown in bottom two detail views. Use four of each of the fasteners listed below to secure brackets to the street side "B & C Pillars".

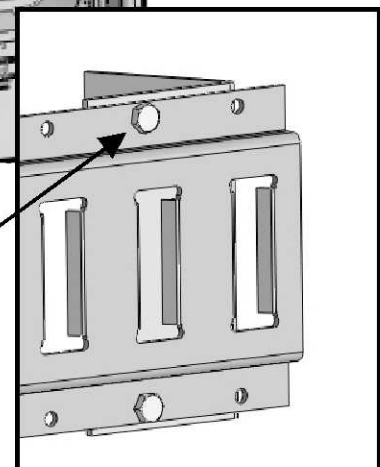
Street Side  
C-Pillar

Street Side  
B-Pillar

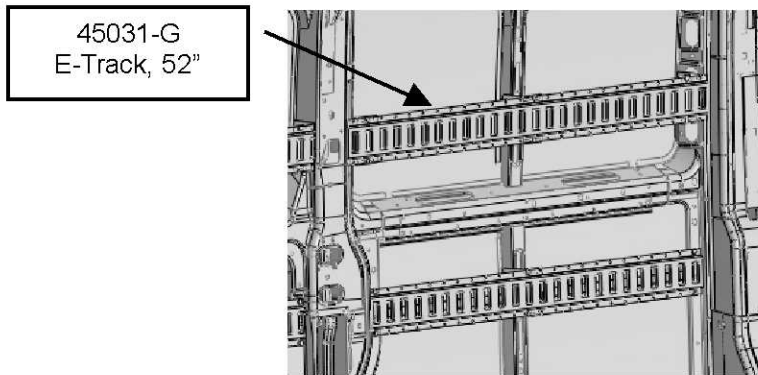


FAS0055  
FAS0078  
2-pl

FAS0055  
FAS0078  
2-pl



## Step 2.0 "Location & Installation of the Frnt Uptr E-Trk and Brks, continued"

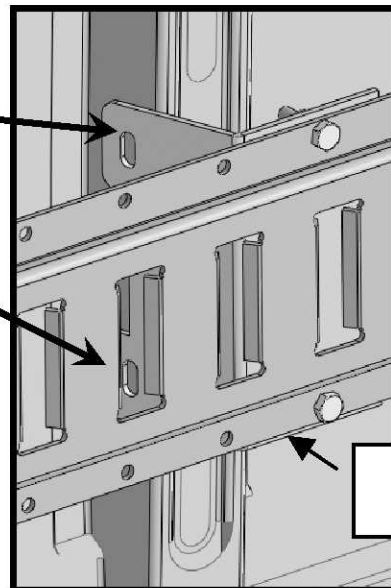


**Step 2.5**  
Position the Center E-Track Support Bracket (45594-G) as shown in figure at right.

**Note**

Fasteners should be hand tight only

Mark the center bracket plusnut locations using a permanent marker pen. Once both holes have been marked remove fasteners at each end of the e-track section to the end support brackets and set aside at this time.



**Step 2.6**  
Install two 1/4-20UNC plusnuts (FAS0052) in marked holes, use a 3/8" diameter drill bit with a stop collar when drilling plusnut holes. See front of this instruction proper installation.



FAS0067  
FAS0060  
FAS0078  
2-pl

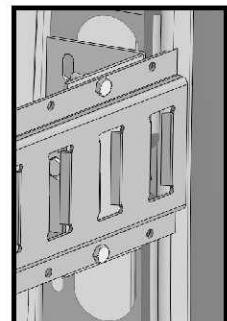
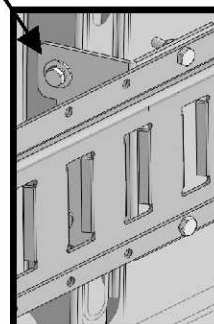
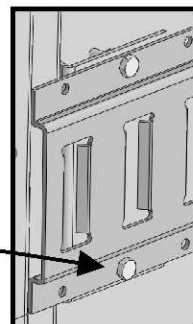
**Step 2.7**  
Once both plusnuts have been installed, reposition the e-track section and secure both ends to the "B" and "C" pillars. Next secure the center support bracket in place with two each of the listed fasteners.

**Note**

Tighten all fasteners, proceed to next step.

FAS0052  
2-pl

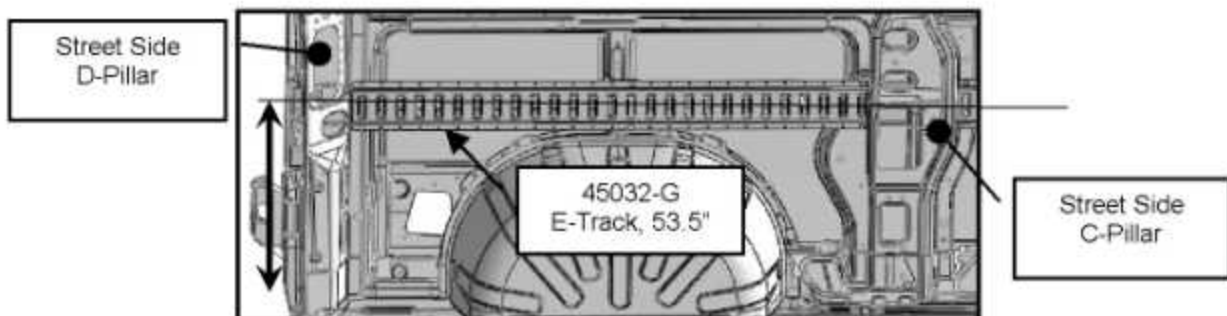
FAS0055  
FAS0078  
typ



### Step 3.0 "Location & Installation of the Lower Rear E-Track Section and Brackets"

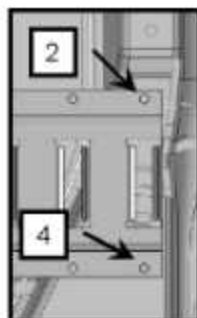
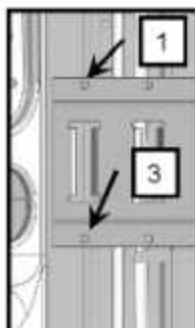
#### Step 3.1

Position e-track section (45032-G) between the street side "C-Pillar" and "D-Pillar" as shown in top center detail view below. **Please note orientation of e-track section (45032-G) as shown in middle two views. Proper orientation ensures correct e-track to bracket mounting hole alignments.** Centerline of the e-track to be 21 inches above the vehicle floor. Check centerline dimensions prior to marking the upper two (#1 & #2) mounting holes. Use permanent marker pen. Once both holes have been marked set e-track section aside.



#### Step 3.2

Drill this hole (#1) first (shown in left detail view) using a 3/8" diameter drill bit, with a stop collar. Next install one 1/4-20UNC plusnut (FAS0052) as outlined at the beginning of these instructions. Secure the e-track section with one each of the following fasteners (FAS0078 & FAS0060), do not fully tighten at this time. Note, you will have to physically support the e-track rail in position for the next step.



#### Step 3.3

While firmly holding the e-track section at the correct height, drill the second hole (#2) shown in left detail view using a 1/4" diameter drill bit with a stop collar. The e-track section will serve as a drill template to accurately locate mounting hole. Gently reposition the e-track section to gain access for plusnut installation. Enlarge hole to 3/8" diameter (use drill bit w/stop collar). Next install one 1/4-20UNC plusnut (FAS0052) as outlined at the beginning of these instructions. Reposition and secure the e-track section with one each of the following fasteners (03927-1, FAS0078, & FAS0060), do not fully tighten at this time.

#### Step 3.4

Drill the lower two e-track mounting (#3 & #4) holes using a 1/4" diameter drill bit with a stop collar. The e-track section will serve as a drill template to accurately locate the remaining two holes. Remove the upper two fasteners securing the e-track section to the B & C pillars and set aside at this time. Enlarge both holes to 3/8" diameter (use drill bit w/stop collar). Next install two 1/4-20UNC plusnut (FAS0052) as outlined at the beginning of these instructions.



FAS0052  
2-pl

FAS0060  
FAS0078  
2-pl

#### Step 3.5

Once all four plusnuts have been installed, reposition the e-track section and secure in place with four of the following fasteners.

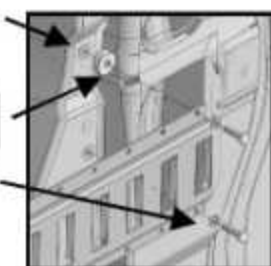
#### Note

Fasteners to be hand tight only.

FAS0052  
2-pl

03927-1

FAS0060  
FAS0078  
2-pl



### Step 3.0 "Location & Installation of the Frnt Uptr E-Trk and Brks, continued"

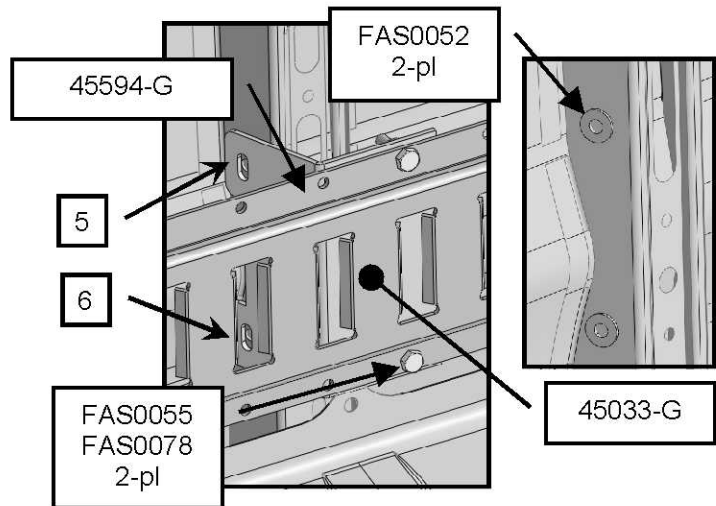
#### Step 3.6

Position the Center E-Track Support Bracket (45594-G) as shown in figure at right. Secure bracket to e-track section with two each of the fasteners listed.

#### Note

Fasteners to be hand tight only

Mark the center bracket plusnut locations (#5 & #6) using a permanent marker pen. Once both holes have been marked remove fasteners at each end of the e-track section and set aside at this time.



#### Step 3.7

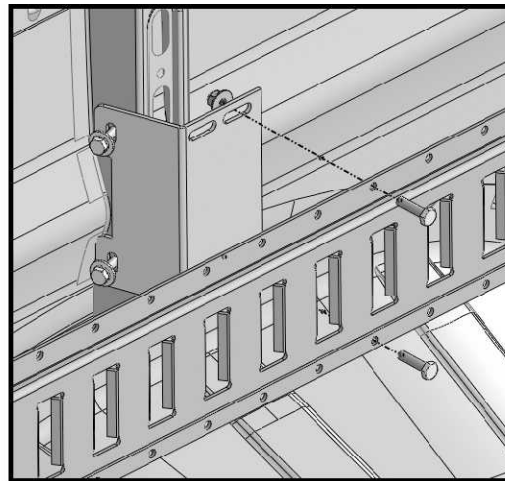
Install two 1/4-20UNC plusnuts (FAS0052) in marked holes, use a 3/8" diameter drill bit with a stop collar when drilling plusnut holes. See front of this instruction proper installation.

#### Step 3.8

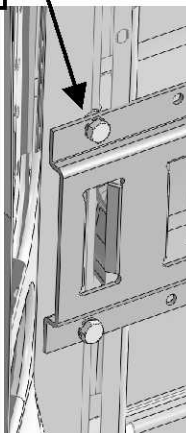
Once both plusnuts have been installed, reposition the e-track section and secure both ends to the "B" and "C" pillars. Next secure the center support bracket in place with two each of the listed fasteners.

#### Note

Tighten all fasteners, proceed to next step.

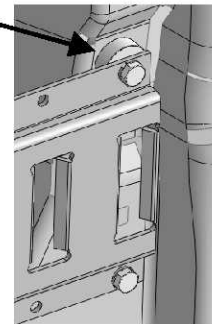
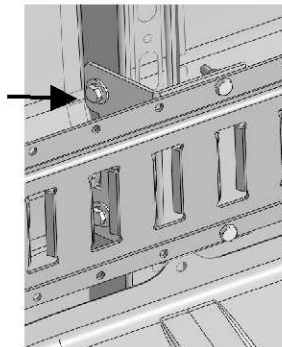


FAS0060  
FAS0078  
Typ



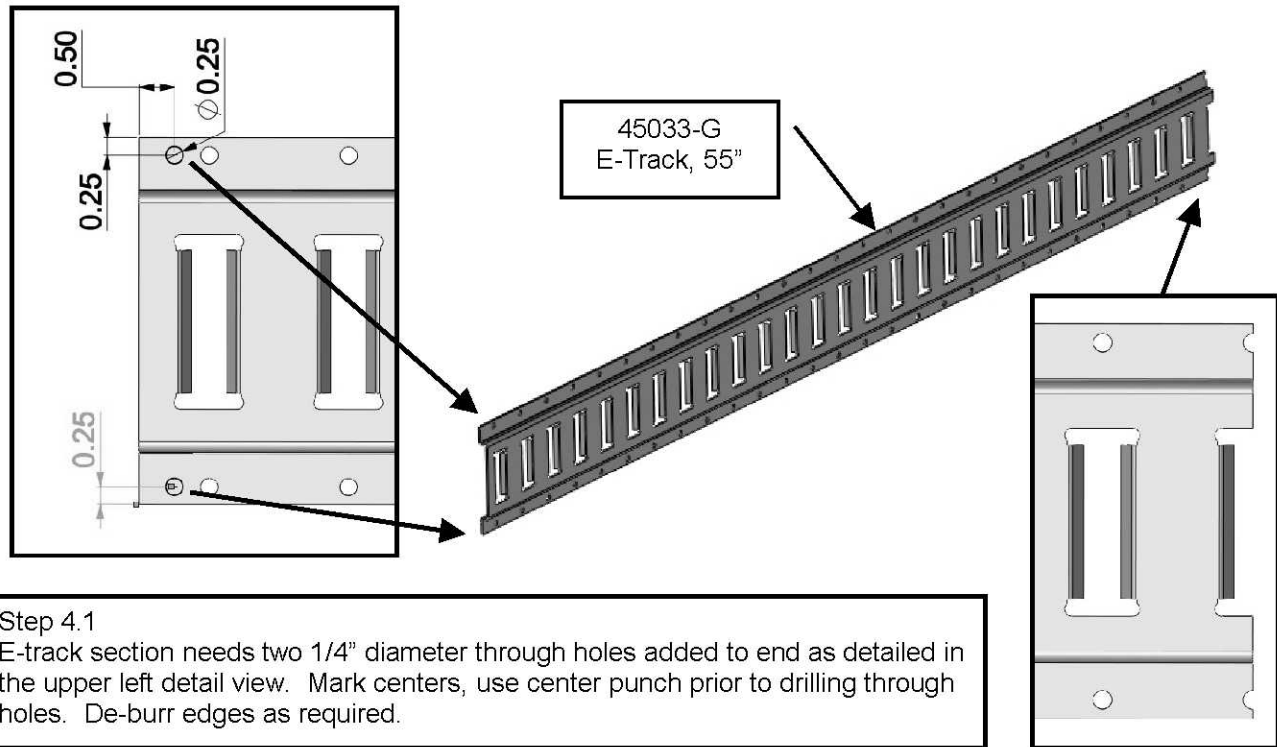
03927-1, FAS0060, FAS0078

FAS0067  
FAS0060  
FAS0078  
2-pl





## Step 4.0 "Location & Installation of the Upper Rear E-Track Section and Brackets"



### Step 4.1

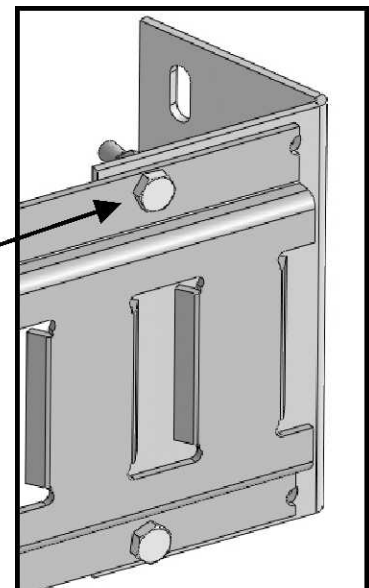
E-track section needs two 1/4" diameter through holes added to end as detailed in the upper left detail view. Mark centers, use center punch prior to drilling through holes. De-burr edges as required.



### Step 4.2

Bracket must be bent at an approximant angle of 20 degrees. This is required to provide clearance to better fit the OEM sheet metal profile

FAS0055  
FAS0078  
2-pl

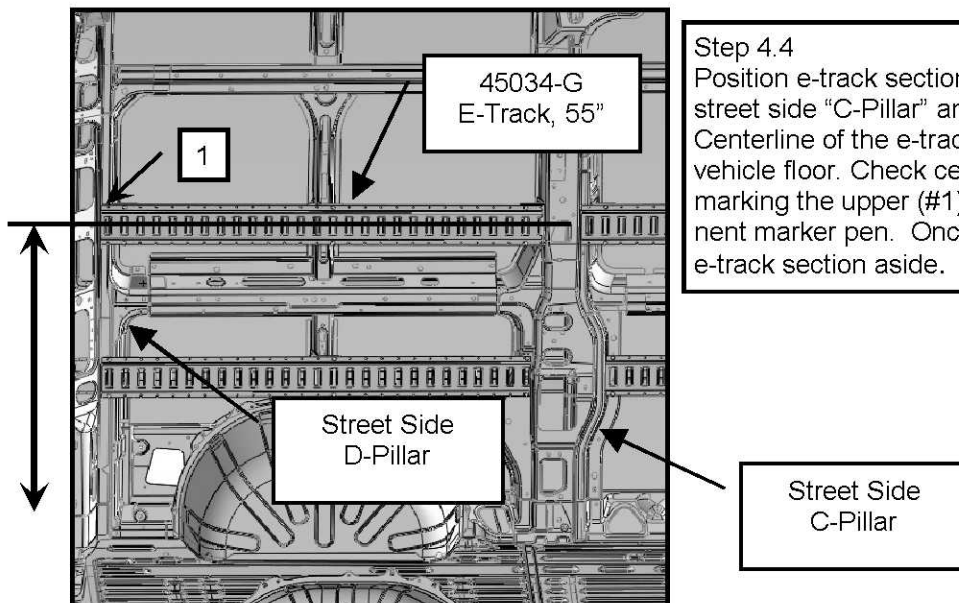


### Step 4.3

Secure the end bracket (45593-G) to the e-track section as shown in right side detail view. Note part orientation and slot/fastener locations.

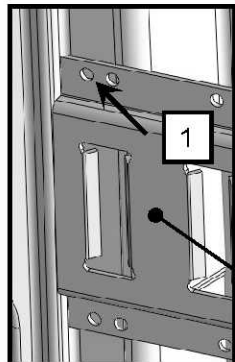


## Step 4.0 "Location & Installation of the Upr Rr E-Trk Section and Brkts, continued"



### Step 4.4

Position e-track section (45034-G) between the street side "C-Pillar" and "D-Pillar" as shown at left. Centerline of the e-track to be 41 inches above the vehicle floor. Check centerline dimensions prior to marking the upper (#1) mounting hole. Use permanent marker pen. Once hole has been marked set e-track section aside.



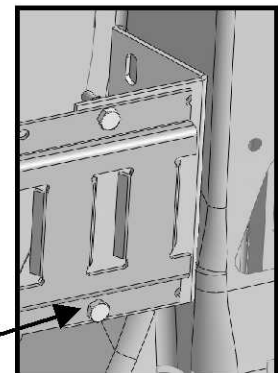
### Step 4.5

Drill this hole (#1) first shown in left detail view using a 3/8" diameter drill bit. with a stop collar. Next install one 1/4-20UNC plusnut (FAS0052) as outlined at the beginning of these instructions. Secure the e-track section with one each of the following fasteners (FAS0078 & FAS0060), do not fully tighten at this time. Note, you will have to physically support the e-track rail in position for the next step.

45034-G E-Track, 55"

### Step 4.6

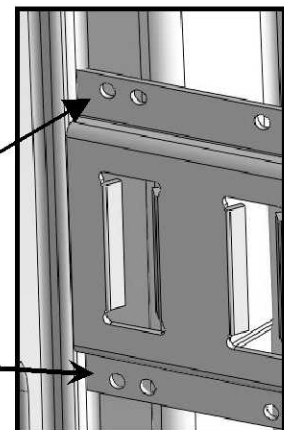
Position e-track section and install fastener securing e-track section in place. Use fasteners listed in right and bottom detail views.



### Step 4.7

Drill the second hole (#2) shown in left detail view using a 1/4" diameter drill bit with a stop collar. The e-track section will serve as a drill template to accurately locate mounting hole. Remove the e-track section to gain access for plusnut installation. Enlarge hole to 3/8" diameter (use drill bit w/stop collar). Next install one 1/4-20UNC plusnut (FAS0052) as outlined at the beginning of these instructions. Reposition and secure the e-track section with one each of the following fasteners (03927-1, FAS0078, & FAS0060), do not fully tighten at this time.

FAS0060  
FAS0078  
2-pl



## Step 4.0 "Location & Installation of the Upr Rr E-Trk Section and Brkts, continued"

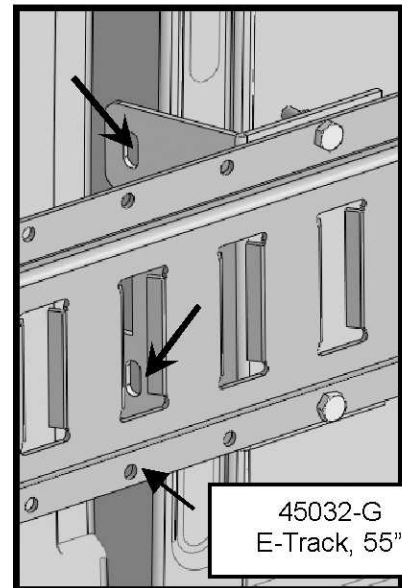
### Step 4.8

Position the Center E-Track Support Bracket (45594-G) as shown in figure at right.

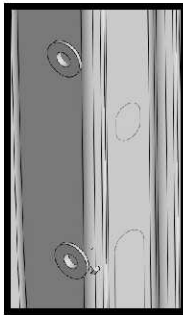
#### Note

Fasteners should be hand tight only

Mark the center bracket plusnut locations using a permanent marker pen. Once both holes have been marked remove fasteners at each end of the e-track section to the end support brackets and set aside at this time.



45032-G  
E-Track, 55"



### Step 4.9

Install two 1/4-20UNC plusnuts (FAS0052) in marked holes, use a 3/8" diameter drill bit with a stop collar when drilling plusnut holes. See front of this instruction proper installation.

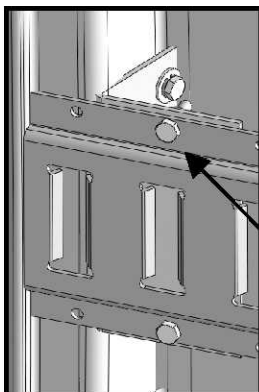
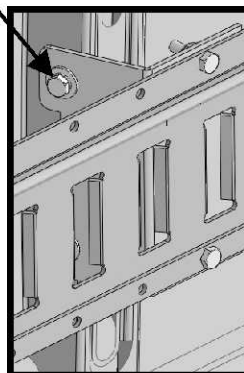
### Step 4.10

Once both plusnuts have been installed, reposition the e-track section and secure both ends to the "B" and "C" pillars. Next secure the center support bracket in place with two each of the listed fasteners.

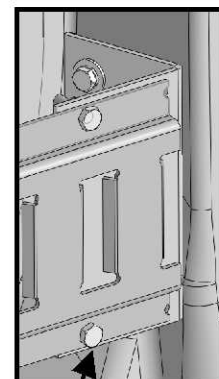
#### Note

Tighten all fasteners, proceed to next

FAS0067  
FAS0060  
FAS0078  
2-pl

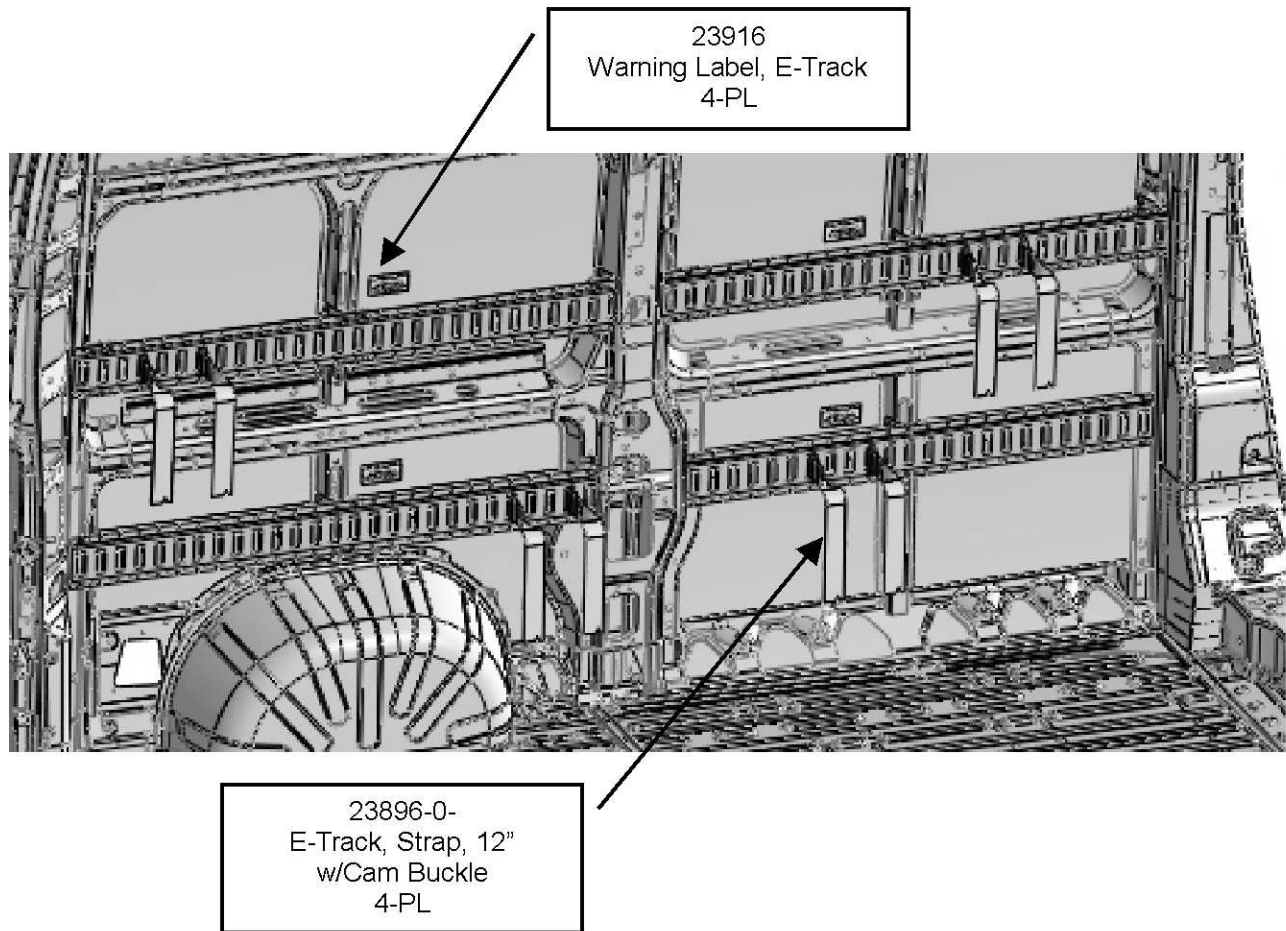


FAS0055  
FAS0078  
2-pl



FAS0055  
FAS0078  
2-pl

## Step 05 “Apply warning labels and straps



PURCHASED COMPONENT KEY FEATURES	
DESCRIPTION OF REQUIREMENTS	
DIMENSIONAL REQUIREMENTS (AS SHOWN ON DRAWING)	
N/A	
LOAD/RATING REQUIREMENT	
N/A	
MATERIAL REQUIREMENT	
N/A	
PACKAGING REQUIREMENT	
N/A	
OTHER REQUIREMENTS	
<ul style="list-style-type: none"><li>2" x 12' STRONG POLYESTER WEBBING WITH 48" FIXED END</li><li>DESIGNED TO SECURE CARGO UP TO 833 LBS.</li><li>2" CAM BUCKLE WITH SPRING-ACTUATED E-FITTINGS ON BOTH ENDS</li></ul>	



THIS DRAWING IS THE PROPERTY OF ADRIAN STEEL COMPANY AND IS NOT TO BE USED IN ANY MANNER DETRIMENTAL TO THE INTERESTS OF ADRIAN STEEL COMPANY		PRINTED DOCUMENT IS UNCONTROLLED		Sheet 1 of 1	
TOLERANCES & INSPECTION		PART / PRODUCT IDENTIFICATION			
UNLESS OTHERWISE SPECIFIED ALL BEND ANGLES ARE 90 DEGREES ALL DIMENSIONS ARE IN INCHES. REFERENCE DIMENSIONS (X.XXX) DO NOT REQUIRE INSPECTION		ADRIAN STEEL® ADRIAN STEEL COMPANY 906 JAMES STREET, ADRIAN, MI 49221		REVISION LEVEL B	
FEATURES 0.0 = ± .125 0.00 = ± .062 0.000 = ± .031		HOLES/SLOTS 0.0 = ± .062 0.00 = ± .031 0.000 = ± .015		MATERIAL USED: POLYESTER DESIGNED BY: RG	
ANGLES 0° = ± 2° 0.0° = ± 1°		DESCRIPTION: E-TRAC,STRAP 12'W/CAM BKL			
Material Thickness: per ASTM Std. Weld Callouts per AWS		WEIGHT (Lbs.): 1.60 LBS		SEGMENT CODE: MAC	
REVISED BY: WJA		PART NUMBER: 23896-0			

PURCHASED COMPONENT	
REFERENCED SUPPLIER AND/OR MANUFACTURER AUSTIN HARDWARE / OR EQUIVALENT	
REFERENCED SUPPLIER AND/OR MANUFACTURER PART NUMBER CCCS-001	
COLOR (ONLY LIST IF COLOR SPECIFIC) N/A	
COMODITY ITEM (Y/N) (YES = ALL DIMENSIONS AND NOTES ARE REFERENCE) (NOTE: DIMENSIONS AND FEATURES MAY VARY FOR A COMODITY ITEM.) YES	