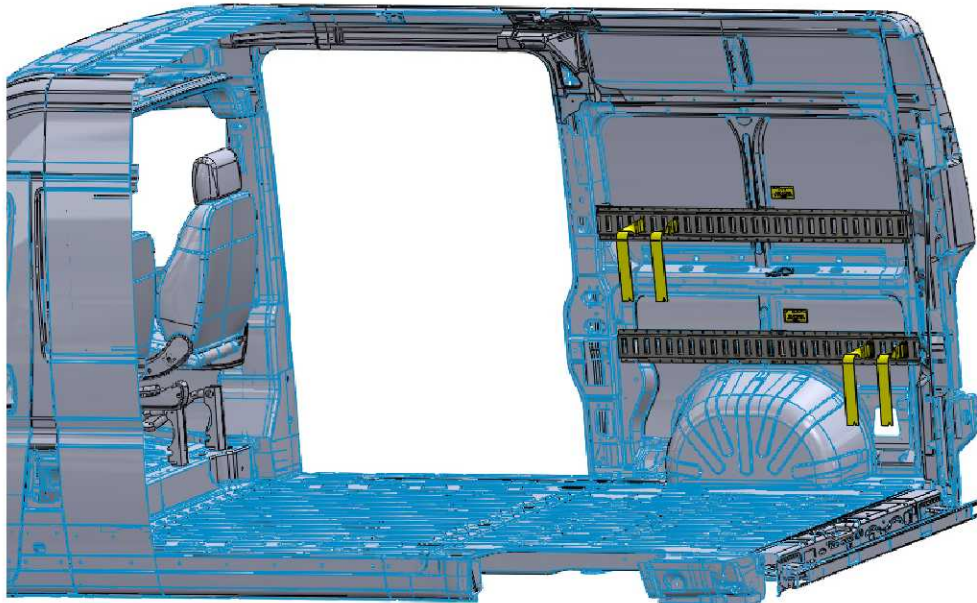


Introduction / Comments:

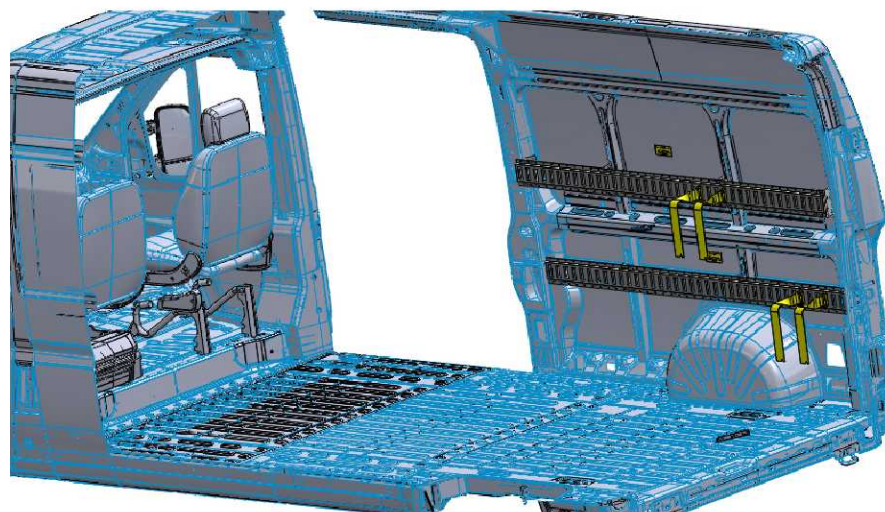
This curb side (passenger) e-track kit is designed to fit the 2014 Promaster 159" High Roof.
This curb side (passenger) e-track kit is designed to fit the 2014 Promaster 136" High Roof.

Note:

It is advised that all fasteners used in this assembly and installation should be checked for tightness at the following intervals: @ 2-weeks and again @ 6-weeks of operation. This preventive maintenance step must be completed to ensure your product gives you long service life.



**E-Track Kit (Curb Side)
2014 Promaster 136" High Roof vehicle
ET136PMCS**



**E-Track Kit (Curb Side)
2014 Promaster 159" High Roof vehicle
ET159PMCS**

- PRECAUTIONS -





 **CAUTION** 
**THE USE OF AIR IMPACT TOOLS CAN
OVER-TORQUE FASTENERS AND
CAUSE FASTENER FAILURE!**





 **CAUTION** 
**ALL INSTALLATION HOLES SHOULD BE SEALED
WITH SILICON OR BUTYL SEALANT TO PREVENT
EXHAUST FUMES FROM ENTERING THE VEHICLE!**



 **DANGER** 
**INSPECT FOR FUEL TANK, FUEL LINES, BRAKE LINES, HIGH
VOLTAGE BATTERIES AND ELECTRICAL LINES PRIOR TO
DRILLING TO AVOID DAMAGING CRITICAL VEHICLE SYSTEMS
OR INJURY TO INSTALLER DURING INSTALLATION PROCESS!**



 **CAUTION** 
**TO AVOID DAMAGING THE VEHICLE ALWAYS
USE DRILL STOPS WHEN DRILLING ANY IN-
STALLATION HOLES!**



- IMPORTANT WARRANTY REQUIREMENTS -

1. SUBSTITUTING ADRIAN STEEL SPECIFIED FASTENERS FOR ASSEMBLY AND/OR INSTALLATION WILL VOID YOUR PRODUCT WARRANTY.
2. ALL HOLES DRILLED INTO VEHICLE SHOULD HAVE THE RAW METAL EDGES SEALED WITH A SELF-ETCHING PRIMER TO RESIST CORROSION AND POTENTIAL FASTENER POINT FAILURE.
3. ALL FASTENERS USED IN THE INSTALLATION OF THIS PRODUCT SHOULD BE TIGHTENED TO THE TORQUE(S) SPECIFIED IN THESE INSTRUCTIONS.
4. THESE INSTRUCTIONS SHOULD BE KEPT WITH THE VEHICLE.

THE BASIC TOOLS NEEDED FOR MOST INSTALLATIONS



DRILL



DRILL BIT WITH
STOP



RATCHET, SOCKETS
AND/OR WRENCHES



SCREWDRIVERS



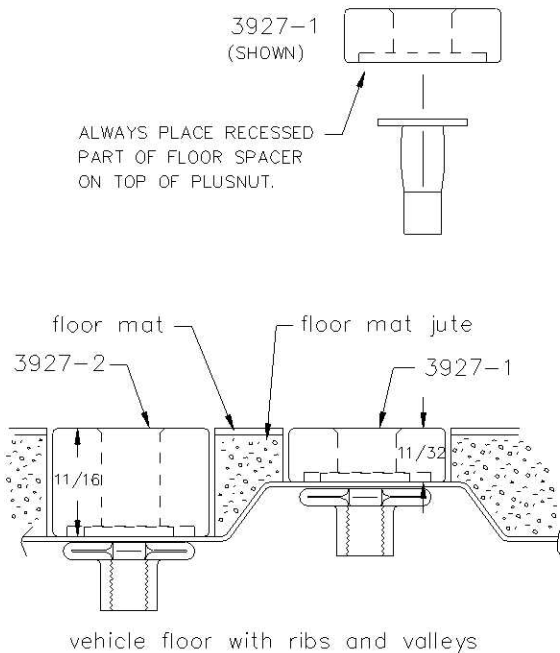
MEASURING TAPE

ADDITIONAL TOOLS MAY BE NEEDED FOR THIS INSTALLATION AND THEY WILL BE IDENTIFIED IN THE STEPS THAT FOLLOW.

If your vehicle contains carpet or a rubber floor mat you will need to prepare the mounting location. Position the product to be installed into the vehicle and once you are satisfied with the mounting locations, mark the mounting locations. Using a 1-3/16" diameter carpet cutter (P/N: 31183-0). Select the appropriate floor spacers as shown in the illustration. Set those aside for use later into the installation process. Using the correct drill bit size for the selected plusnut, drill the mounting holes in the vehicle sheet metal to prepare for installing the plusnuts.

If you are thru-bolting at any of the locations simply drill a hole that is 1/16" larger than the bolt size(s) for those locations.

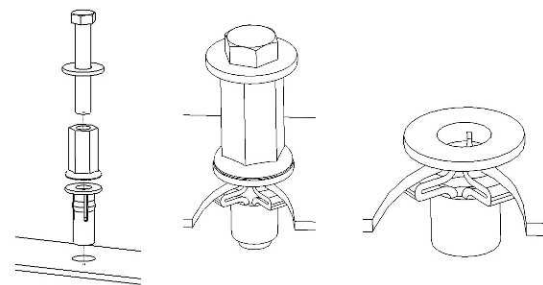
Once you have drilled the holes into the vehicle, the raw metal edges should be sealed using a self-etching primer to resist corrosion and potential fastener point failure.



A PLUSNUT (RIVNUT) SETTING TOOL IS REQUIRED FOR PLUSNUT (RIVNUT) INSTALLATION AND IS SUPPLIED WITH THIS KIT. OR USE AN AIR POWERED PLUSNUT SETTING GUN.

1/4-20UNC Plusnut (FAS0052) Use 3/8" dia. drill w/stop
FAS0080 SCREW, HXHD, 1/4-20UNCx2.00", G8
FAS0067 WASHER, FLAT, 1/4"ID
22200-0 PLUSNUT TOOL

5/16-18UNC Plusnut (FAS0091) Use 1/2" dia. drill w/stop
FAS0095 SCREW, HXHD, 5/16-18UNCx2.00", G8
FAS0086 WASHER, FLAT, 5/16"ID
22200-0 PLUSNUT TOOL

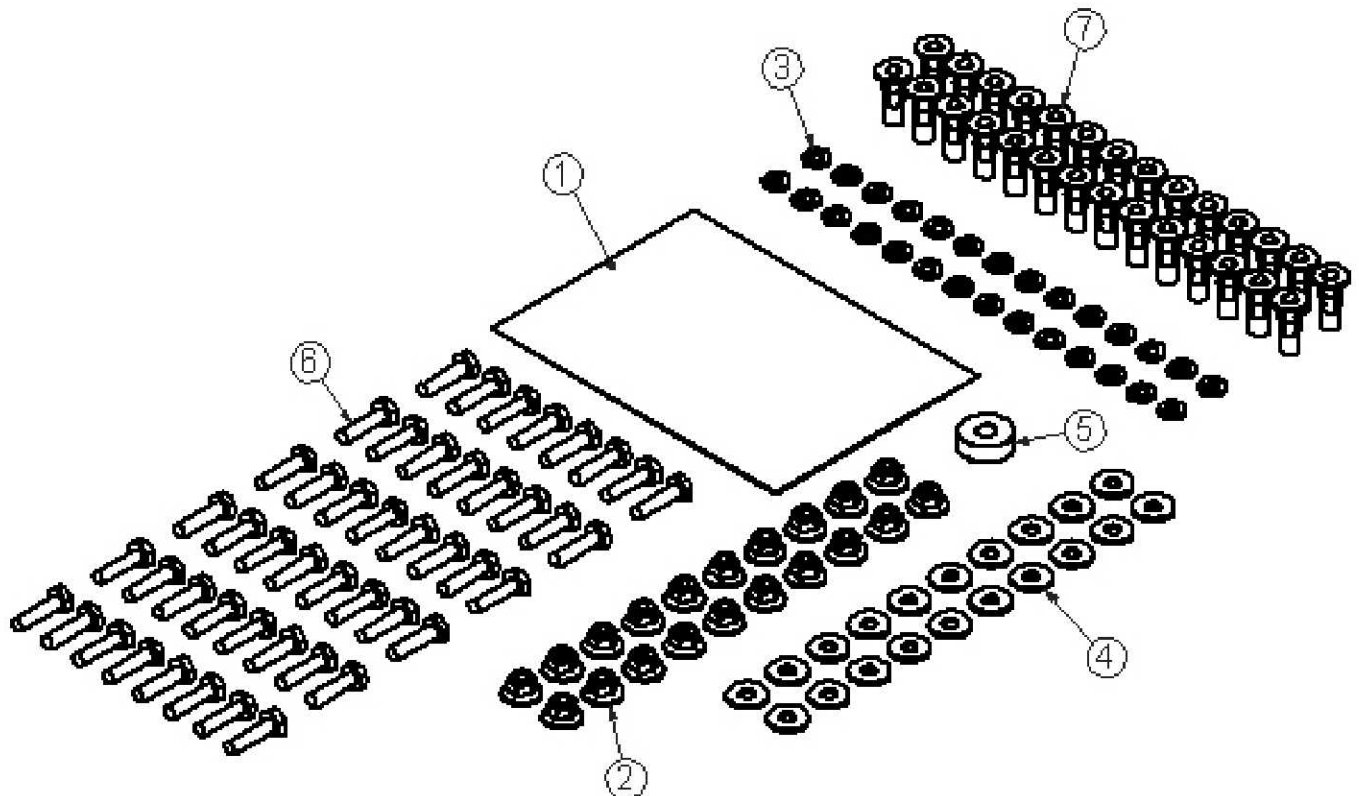


Place barrel of the plusnut body in sheet metal thru hole until flange is flush with sheet metal.

Using a 9/16" combination wrench of plusnut tool body and a second hand wrench, ratchet, or air tool, rotate the hex bolt head CW to draw plus nut flanges up (set the plusnut).

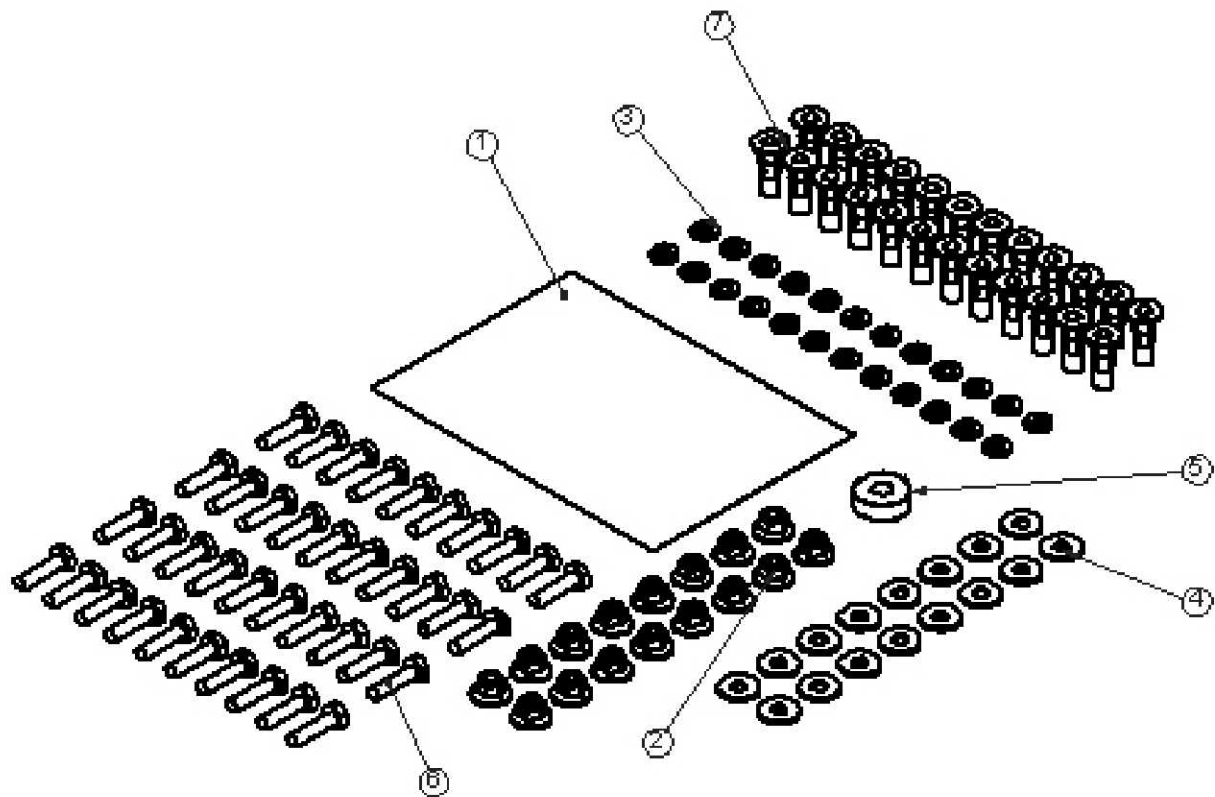
Installation and/or Assembly Fasteners
ET159PMCS

ITEM NO.	PART NUMBER	DESCRIPTION	BAG45597/QTY.
1	BAG0507-A	5" x 7" 3MIL AUTOBAG	1
2	FAS0055	Nut, Hex Flange, Nylock 1/4-20	20
3	FAS0060	Washer, Lock, Split, 1/4	28
4	FAS0067	Washer, Flat, 1/4	20
5	03927-1	Floor Spacer Short	1
6	FAS0078	Screw, Hex Hd, 1/4-20x1.00 Zn Plate, Grade 8	48
7	FAS0052	Plusnut, 1/4	28

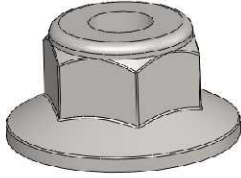


Installation and/or Assembly Fasteners
ET136PMCS

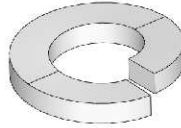
ITEM NO.	PART NUMBER	DESCRIPTION	BAG45595/QTY.
1	BAG0507-A	5" x 7" 3MIL AUTOBAG	1
2	FAS0055	Nut, Hex Flange, Nylock 1/4-20	16
3	FAS0060	Washer, Lock, Split, 1/4	24
4	FAS0067	Washer, Flat, 1/4	16
5	03927-1	Floor Spacer Short	1
6	FAS0078	Screw, Hex Hd, 1/4-20x1.00 Zn Plate, Grade 8	40
7	FAS0052	Plusnut, 1/4	24



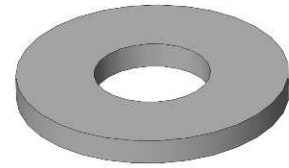
Individual Fasten Identification Sheet



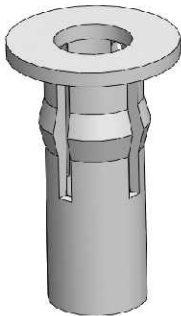
FAS0055
Nut, HxFIng,
Nylon Lock,
1/4-20UNC



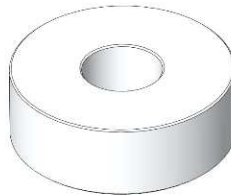
FAS0060
Washer, SplitLock,
1/4" ID



FAS0067
Washer, Flat, 1/4" ID
5/16 ID x 0.734" OD
x .065



FAS0052
Plusnut, PreBulbed,
5/16-18UNC

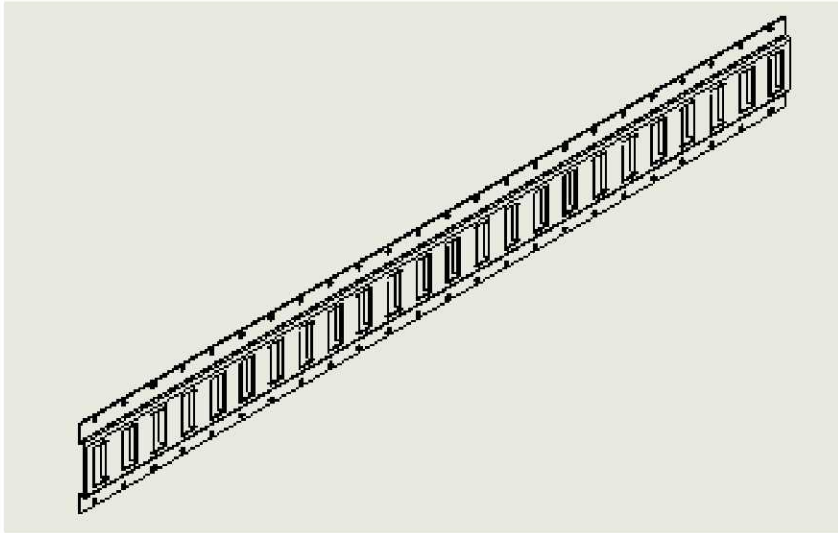


03927-1
Spacer, Floor,
1 1/32"



FAS0078
Screw, Hx Hd,
1/4-20UNC x 1"

Installation and/or Assembly Hardware



ET159PMCS

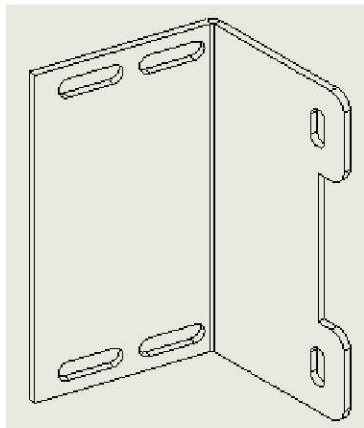
45034-G
E-TRACK, CUT TO 78"
Qty = 1

45035-G
E-TRACK, CUT TO 77"
Qty = 1

ET136PMCS

45033-G
E-TRACK, CUT TO 55"
Qty = 1

45032-G
E-TRACK, CUT TO 53.5"
Qty = 1



45594-G
BRACKET, CENTER SUPPORT,
E-TRACK, PROMASTER

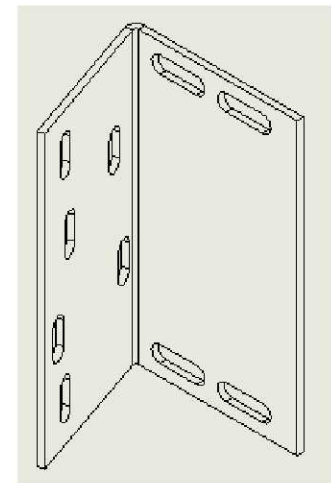
ET159PMCS
Qty = 4

ET136PMCS
Qty = 2

***** WARNING *****

E-TRACK TIE DOWN
WEIGHT IS LIMITED TO
200 LBS.

23916-0
WARNING LABEL, E-TRACK
Qty = 2



45593-G
BRACKET, END SUPPORT,
E-TRACK, PROMASTER

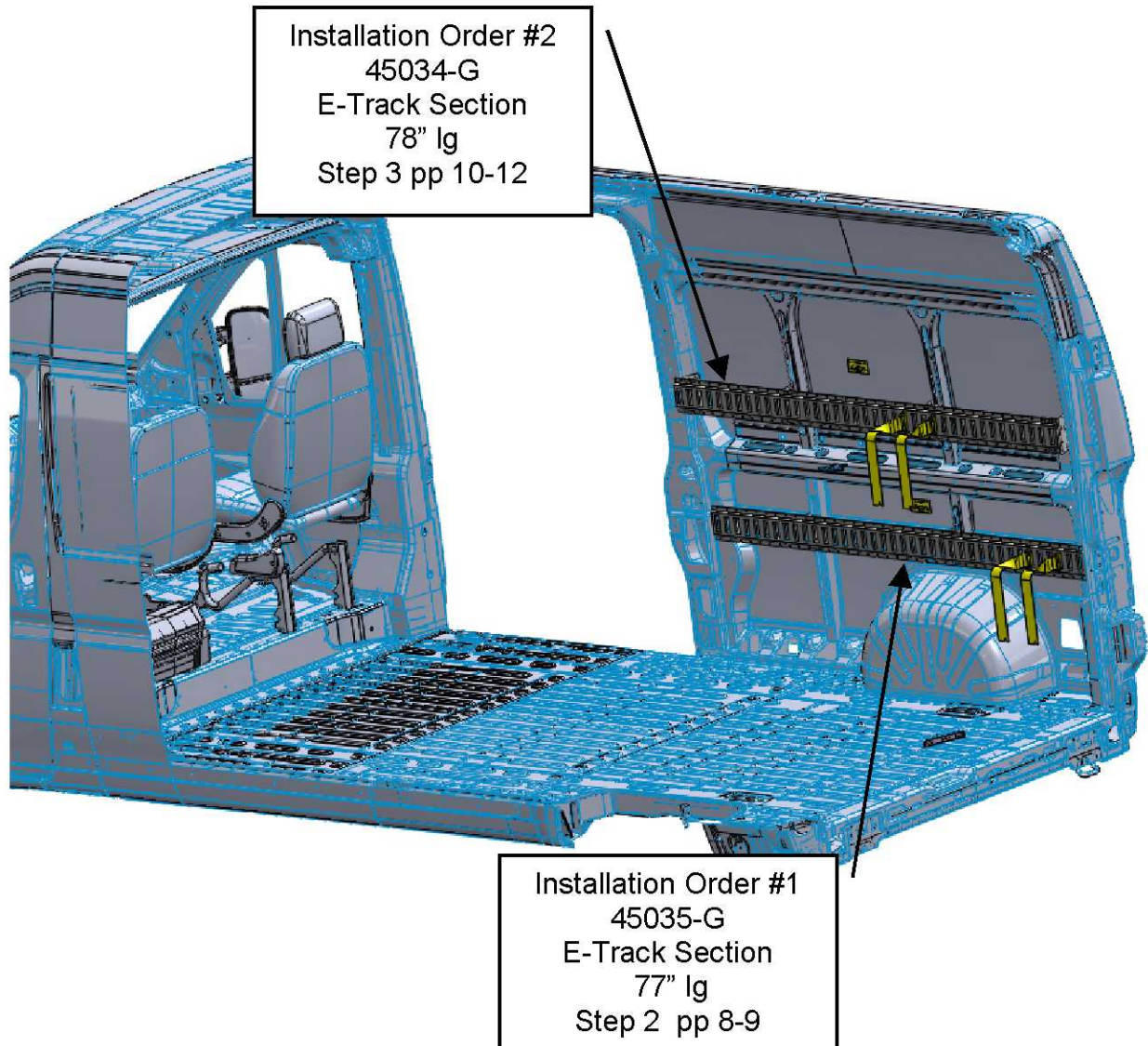
ET159PMCS
Qty = 2
ET136PMCS
Qty = 1



23896-0
E-TRACK, STRAP, 12"
W/CAM BUCKLE
Qty = 2

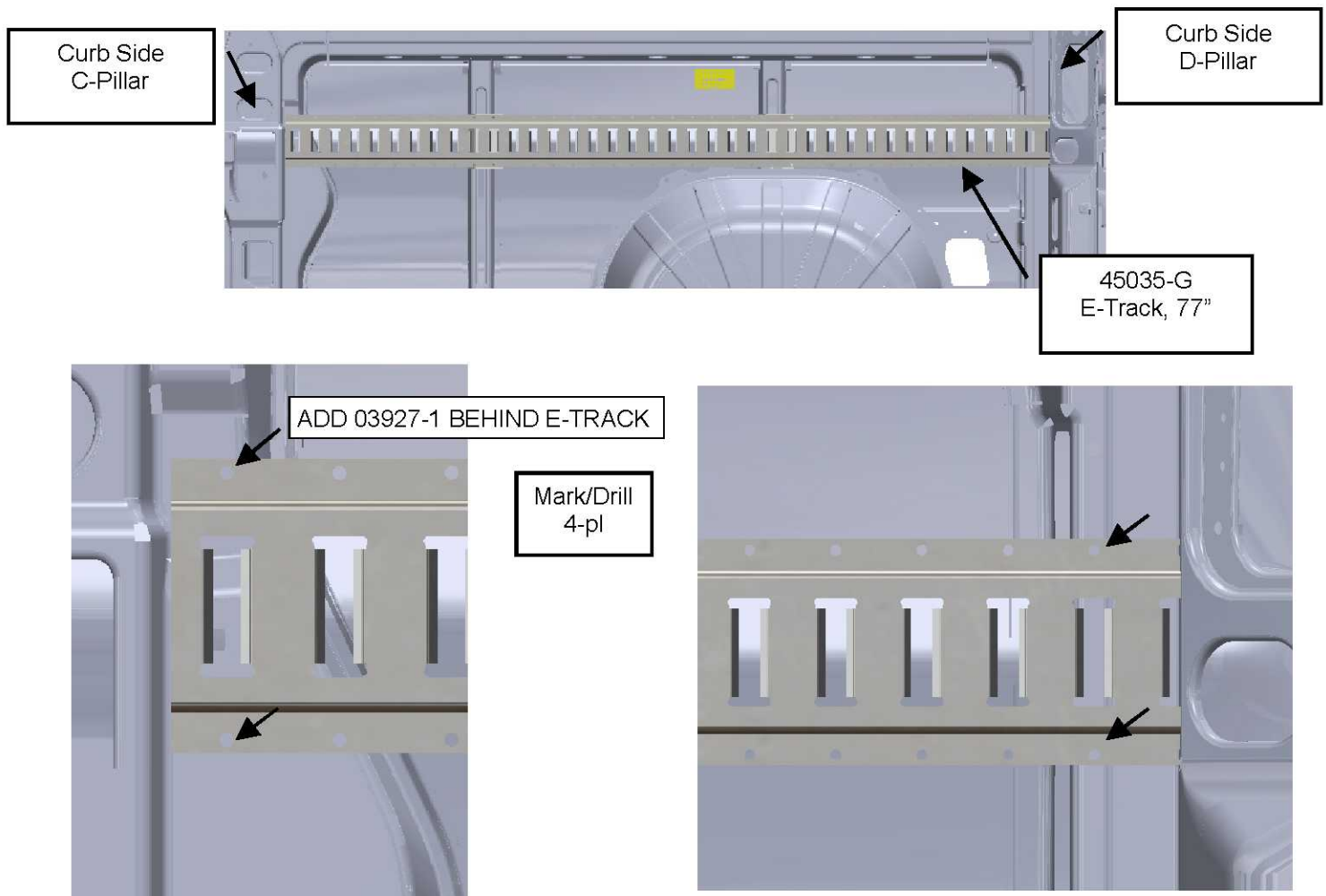
Step 01 " Introduction Statement "

Installation of ET159PMCS will involve attaching four separate track sections in suggested order listed below, but can be rearranged at any time. During installation please make use of the information in the beginning section of these instructions describing plusnut installation and all associated caution/warning notes.



Step 02 "Location & Installation of the Lower E-Track Section and Brackets"

Position e-track section (45035-G) between the curb side "C-Pillar" and "D-Pillar" as shown at below. Centerline of the e-track to be 21 inches above the vehicle floor. Check both ends centerline dimensions prior to marking the four mounting holes marks in left and right details views shown below. Use permanent marker pen. Once all four holes have been marked set e-track section aside.



Once all four plusnuts have been installed, reposition the e-track section and secure in place with four of the following fasteners.

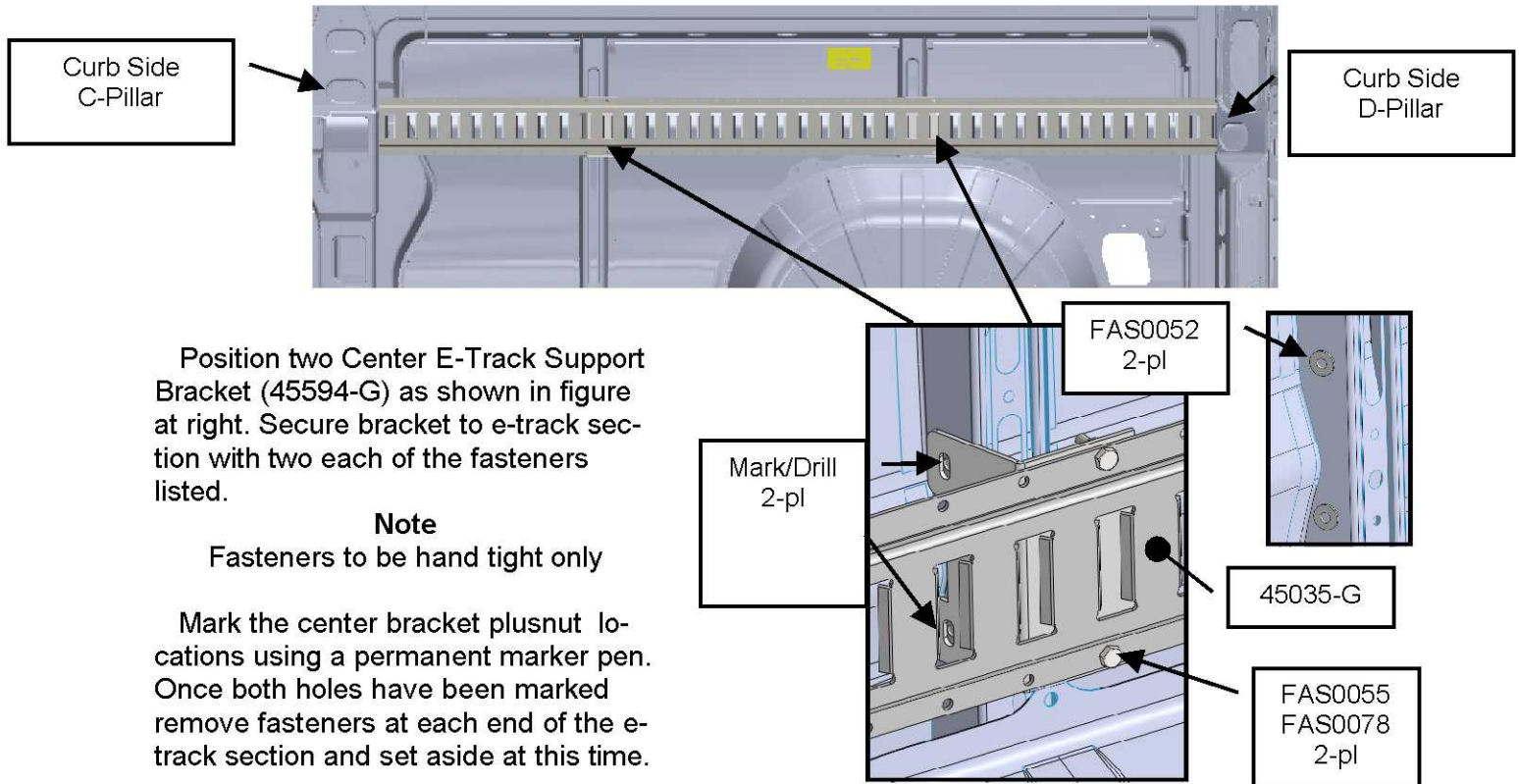
FAS0060, FAS0067

Note

Fasteners to be hand tight only.

Install four 1/4-20UNC plusnuts (FAS0052) in marked holes, use a 3/8" diameter drill bit with a stop collar when drilling plusnut holes. See front of this instruction for proper plusnut installation.

Step 02 "Location & Installation of the Lower E-Track and Brkts, continued"

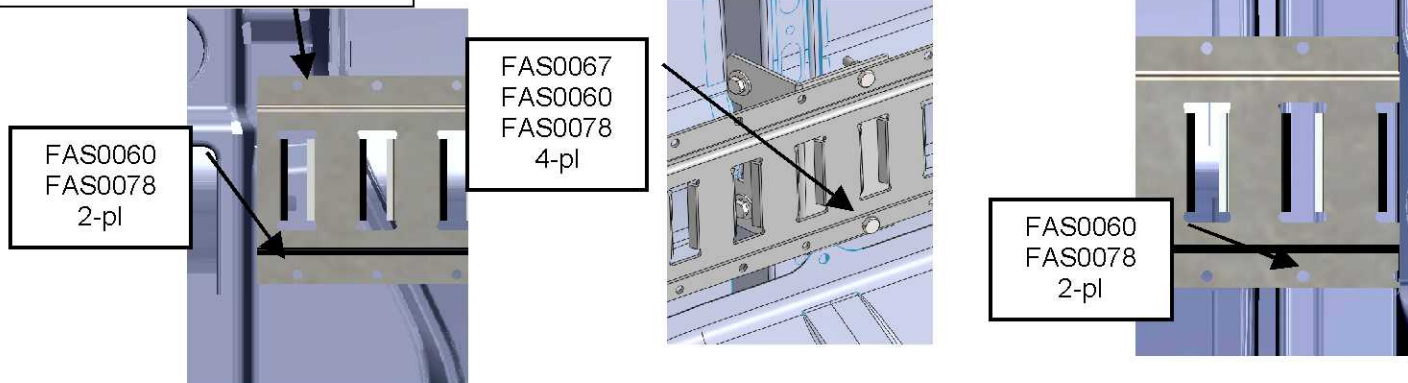


Install two 1/4-20UNC plusnuts (FAS0052) in marked holes, use a 3/8" diameter drill bit with a stop collar when drilling plusnut holes. See front of this instruction proper installation.

Once all four plusnuts have been installed, reposition the e-track section and secure both ends to the "B" and "C" pillars. Next secure the center support bracket in place with two each of the listed fasteners.

Note

ADD 03927-1 BEHIND E-TRACK

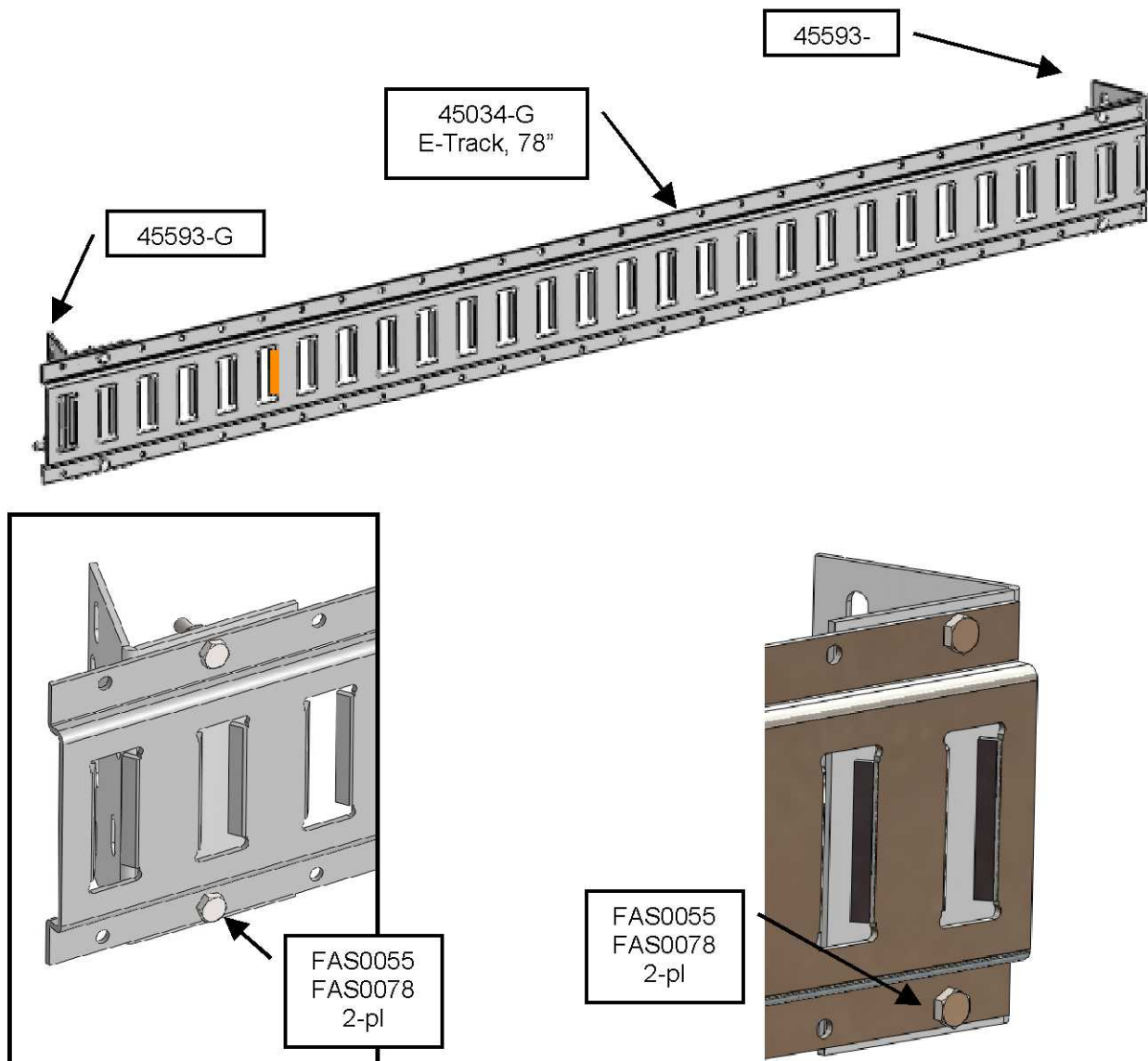


Step 03 "Location & Installation of the Upper E-Track Section and Brackets"

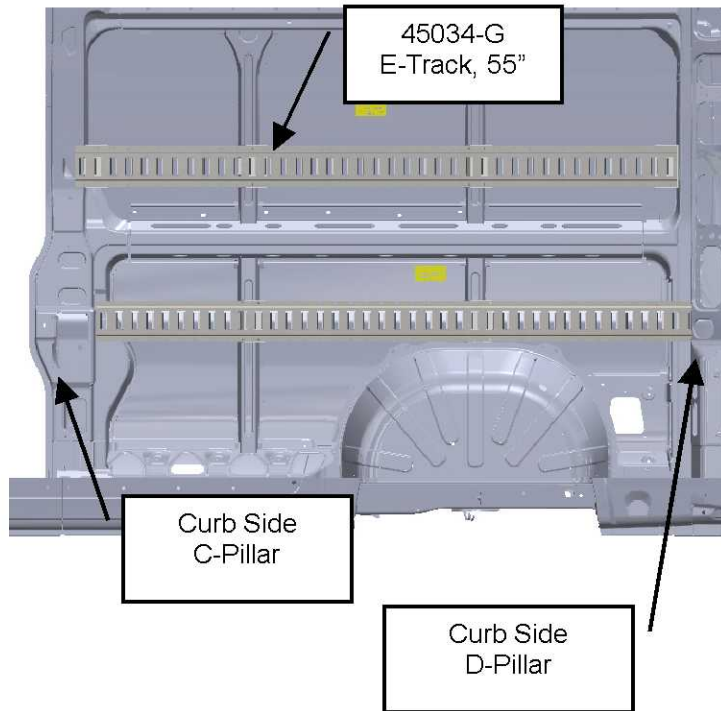
Secure two end support brackets (45593-G) to the e-track section (45034-G) as shown in views below. Secure brackets to the e-track section with 4 of the listed fasteners.

Note

Fasteners to be hand tight only



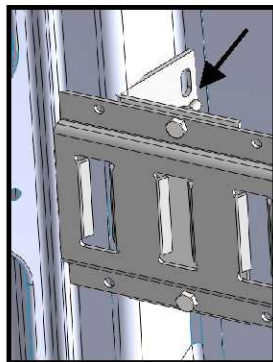
Step 03 "Location & Installation of the Upper E-Track Section and Brkts, continued"



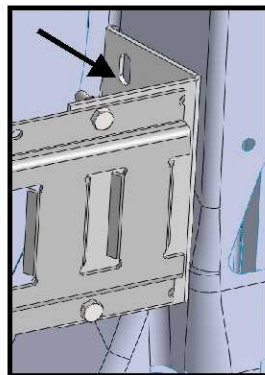
Position e-track section (45034-G) between the street side "C-Pillar" and "D-Pillar" as shown at left. Centerline of the e-track to be 41 inches above the vehicle floor.

Check both ends centerline dimensions prior to marking the four end support brackets (45593-G & 45594-G) mounting holes marks in the details views shown below.

Please note that in lower two detail views the lower plusnut location is hidden in view. Use permanent marker pen to mark all four mounting locations. Once all four holes have been marked set e-track section aside.



Mark/Drill
4-pl



Install four 1/4-20UNC plusnuts (FAS0052) in marked holes, use a 3/8" diameter drill bit with a stop collar when drilling plusnut holes. See front of this instruction for proper plusnut installation.

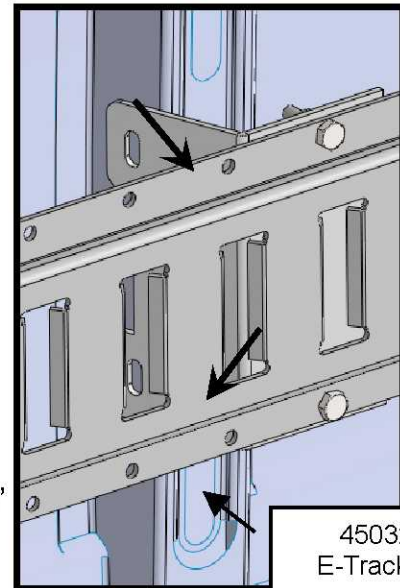
Step 03 "Location & Installation of the Upper E-Track Section and Brkts, continued"

Position two of the Center E-Track Support Bracket (45594-G) as shown in figure at right.

Note

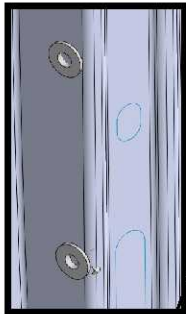
Fasteners should be hand tight only

Mark the center bracket plusnut locations using a permanent marker pen. Once all four holes have been marked remove fasteners at each end of the e-track section to the end support brackets and set aside at this time.



45032-G
E-Track, 55"

Install four 1/4-20UNC plusnuts (FAS0052) in marked holes, use a 3/8" diameter drill bit with a stop collar when drilling plusnut holes. See front of this instruction proper installation.

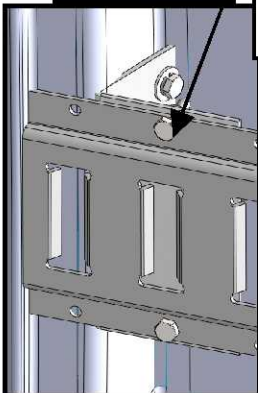


FAS0055
FAS0078
2-pl

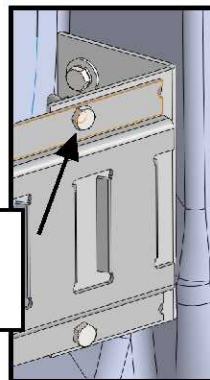
Once both plusnuts have been installed, reposition the e-track section and secure both ends to the "B" and "C" pillars. Next secure the center support bracket in place with two each of the listed fasteners.

Note

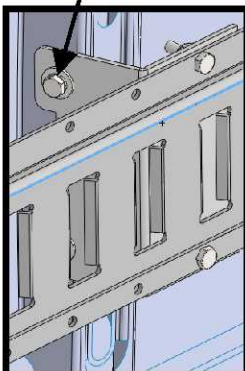
Tighten all fasteners, proceed to next step.



FAS0067
FAS0060
FAS0078
4pl



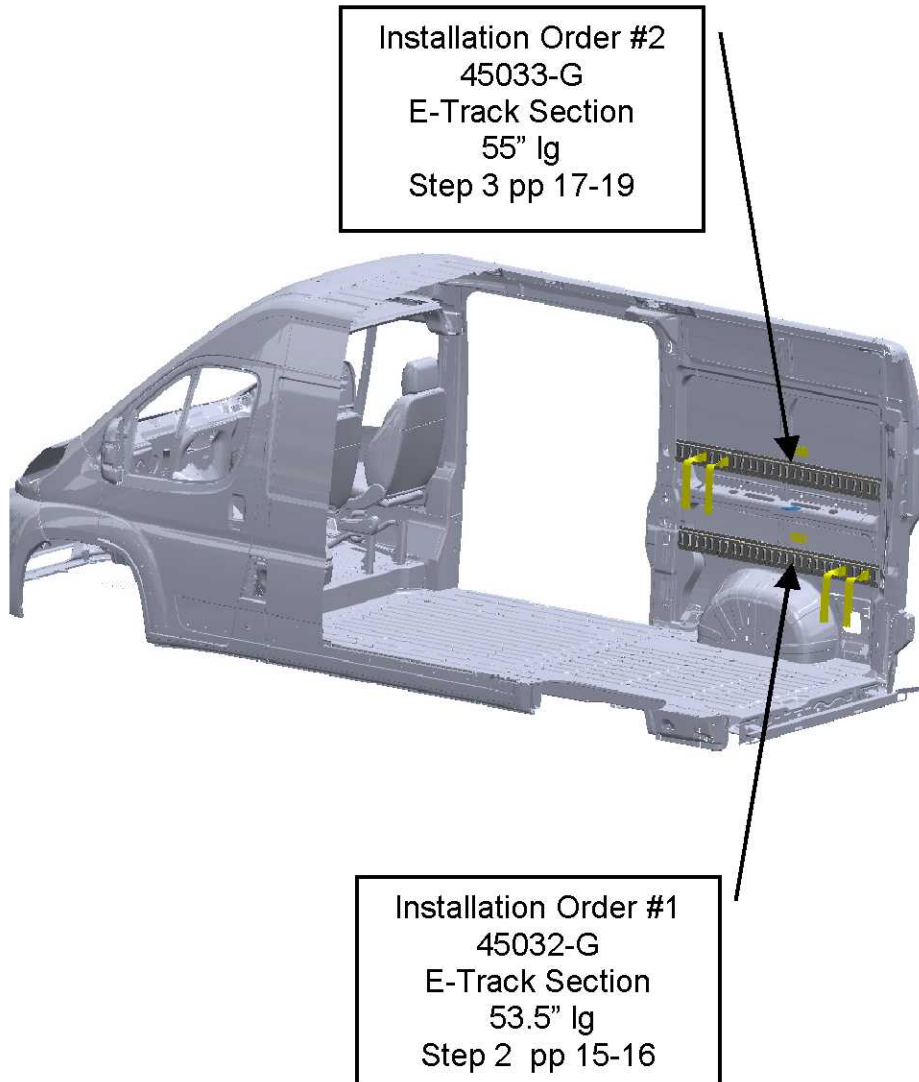
FAS0055
FAS0078
2-pl



Refer to PG 20 for warning label and strap installation

Step 01 " Introduction Statement "

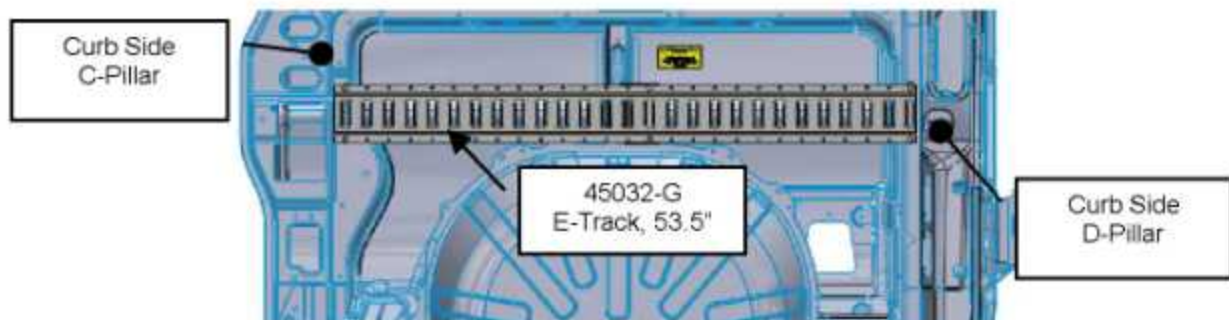
Installation of ET136PMCS will involve attaching four separate track sections in suggested order listed below, but can be rearranged at any time. During installation please make use of the information in the beginning section of these instructions describing plusnut installation and all associated caution/warning notes.



Step 2.0 "Location & Installation of the Lower E-Track Section and Brackets"

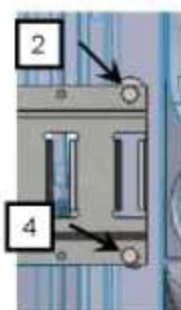
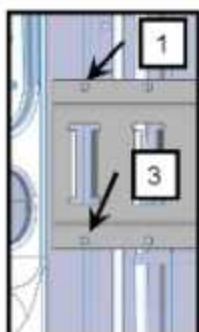
Step 2.1

Position e-track section (45032-G) between the street side "C-Pillar" and "D-Pillar" as shown in top center detail view below. **Please note orientation of e-track section (45032-G) as shown in middle two views. Proper orientation ensures correct e-track to bracket mounting hole alignments.** Centerline of the e-track to be 21 inches above the vehicle floor. Check centerline dimensions prior to marking the upper two (#1 & #2) mounting holes. Use permanent marker pen. Once both holes have been marked set e-track section aside.



Step 2.2

Drill this hole (#1) first (shown in left detail view) using a 3/8" diameter drill bit, with a stop collar. Next install one 1/4-20UNC plusnut (FAS0052) as outlined at the beginning of these instructions. Secure the e-track section with one each of the following fasteners (FAS0078 & FAS0060), do not fully tighten at this time. Note, you will have to physically support the e-track rail in position for the next step.



Step 2.3

While firmly holding the e-track section at the correct height, drill the second hole (#2) shown in left detail view using a 1/4" diameter drill bit with a stop collar. The e-track section will serve as a drill template to accurately locate mounting hole. Gently reposition the e-track section to gain access for plusnut installation. Enlarge hole to 3/8" diameter (use drill bit w/stop collar). Next install one 1/4-20UNC plusnut (FAS0052) as outlined at the beginning of these instructions. Reposition and secure the e-track section with one each of the following fasteners (FAS0078, & FAS0060), do not fully tighten at this time.

Step 2.4

Drill the lower two e-track mounting (#3 & #4) holes using a 1/4" diameter drill bit with a stop collar. The e-track section will serve as a drill template to accurately locate the remaining two holes. Remove the upper two fasteners securing the e-track section to the D & C pillars and set aside at this time. Enlarge both holes to 3/8" diameter (use drill bit w/stop collar). Next install two 1/4-20UNC plusnut (FAS0052) as outlined at the beginning of these instructions.

03927-1

FAS0052
2-pl

FAS0060
FAS0078
2-pl

Step 2.5

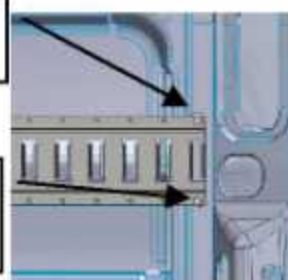
Once all four plusnuts have been installed, reposition the e-track section and secure in place with four of the following fasteners.

Note

Fasteners to be hand tight only.

FAS0052
2-pl

FAS0060
FAS0078
2-pl



Step 2.0 "Location & Installation of the Lower E-Track and Brks, continued"

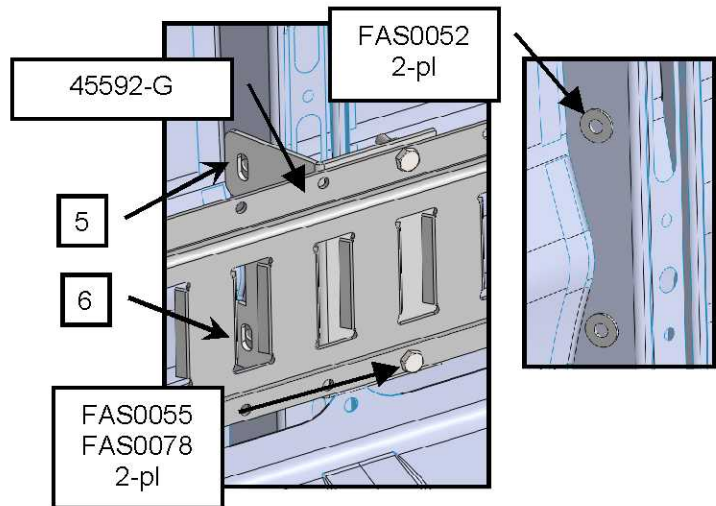
Step 2.6

Position the Center E-Track Support Bracket (45592-G) as shown in figure at right. Secure bracket to e-track section with two each of the fasteners listed.

Note

Fasteners to be hand tight only

Mark the center bracket plusnut locations (#5 & #6) using a permanent marker pen. Once both holes have been marked remove fasteners at each end of the e-track section and set aside at this time.



Step 2.7

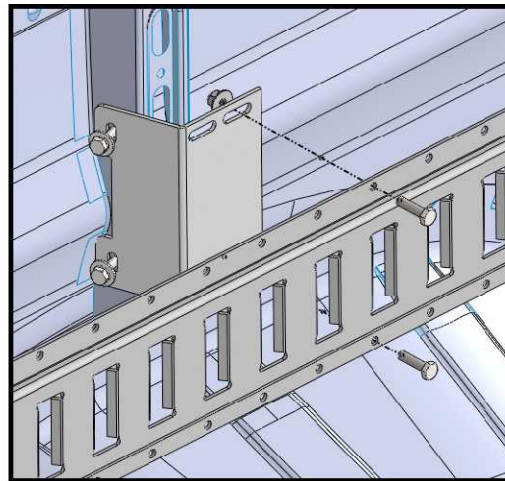
Install two 1/4-20UNC plusnuts (FAS0052) in marked holes, use a 3/8" diameter drill bit with a stop collar when drilling plusnut holes. See front of this instruction proper installation.

Step 2.8

Once both plusnuts have been installed, reposition the e-track section and secure both ends to the "B" and "C" pillars. Next secure the center support bracket in place with two each of the listed fasteners.

Note

Tighten all fasteners, proceed to next step.

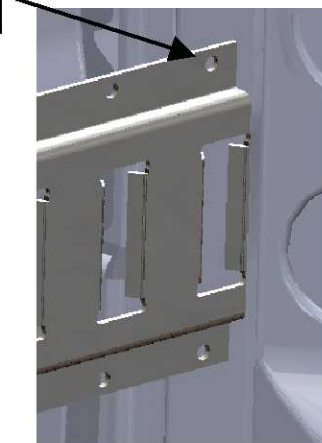
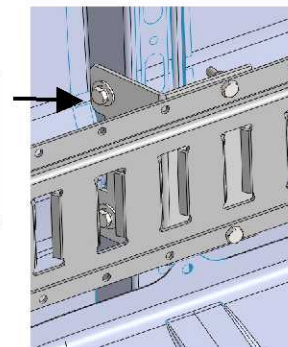


FAS0060
FAS0078
03927-1
Typ

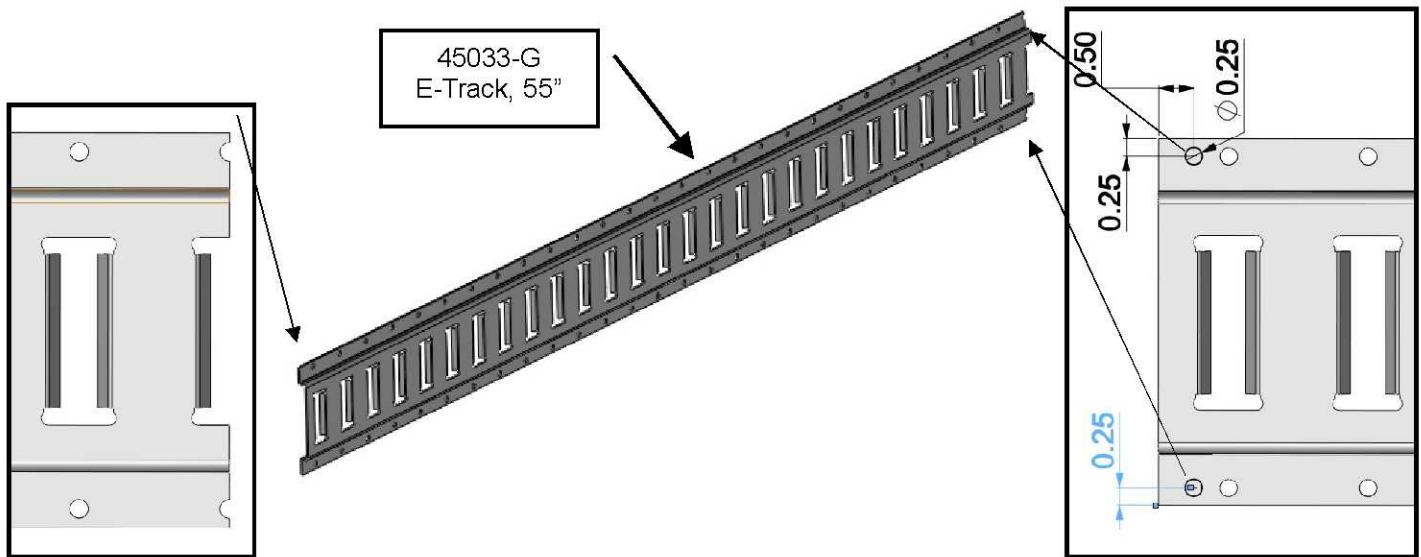


FAS0060, FAS0078

FAS0067
FAS0060
FAS0078
2-pl



Step 3.0 "Location & Installation of the Upper E-Track Section and Brackets"



Step 3.1

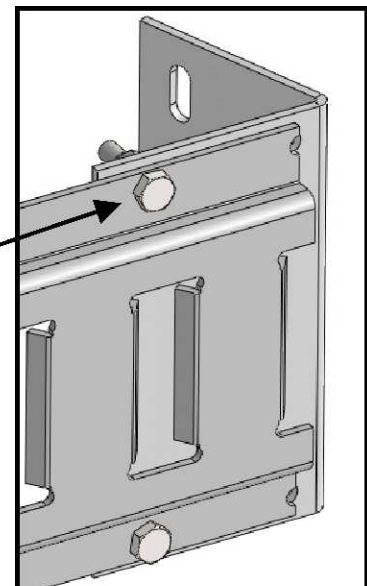
E-track section needs two 1/4" diameter through holes added to end as detailed in the upper left detail view. Mark centers, use center punch prior to drilling through holes. De-burr edges as required.



Step 3.2

Bracket on C-pillar must be bent at an approximant angle of 20 degrees. This is required to provide clearance to better fit the OEM sheet metal profile

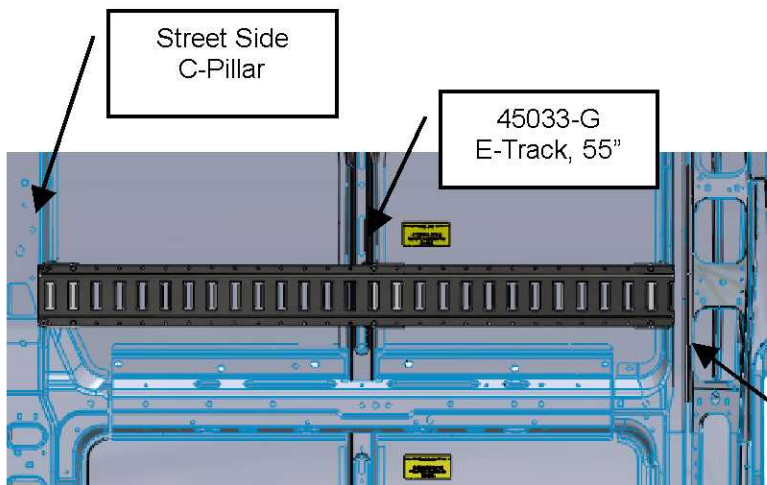
FAS0055
FAS0078
2-pl



Step 3.3

Secure the end bracket (45593-G) to the e-track section as shown in right side detail view. Note part orientation and slot/fastener locations.

Step 3.0 "Location & Installation of the Upper E-Track Section and Brkts, continued"



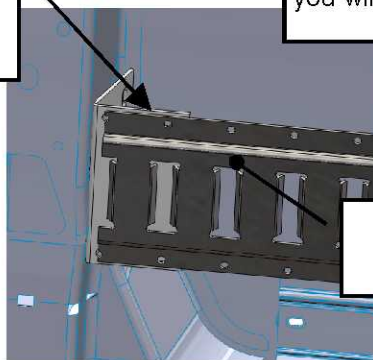
Step 3.4

Position e-track section (45033-G) between the curb side "C-Pillar" and "D-Pillar" as shown at left. Centerline of the e-track to be 41 inches above the vehicle floor. Check centerline dimensions prior to marking the upper (#1) mounting hole. Use permanent marker pen. Once hole has been marked set e-track section aside.

Step 3.5

Drill this hole (#1) first shown in right detail view using a 3/8" diameter drill bit. with a stop collar. Next install one 1/4-20UNC plusnut (FAS0052) as outlined at the beginning of these instructions. Secure the e-track section with one each of the following fasteners (FAS0078 & FAS0060), do not fully tighten at this time. Note, you will have to physically support the e-track rail in position for the next step.

FAS0055
FAS0078
2-pl



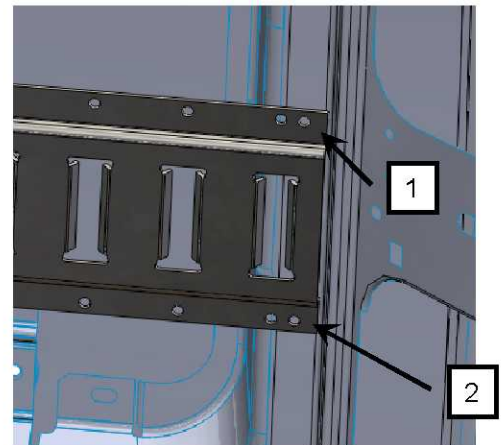
45033-G
E-Track, 55"

Step 3.6

Position e-track section and install fastener securing e-track section in place. Use fasteners listed in left detail views.

Step 3.7

Drill the second hole (#2) shown in right detail view using a 1/4" diameter drill bit with a stop collar. The e-track section will serve as a drill template to accurately locate mounting hole. Remove the e-track section to gain access for plusnut installation. Enlarge hole to 3/8" diameter (use drill bit w/stop collar). Next install one 1/4-20UNC plusnut (FAS0052) as outlined at the beginning of these instructions. Reposition and secure the e-track section with one each of the following fasteners (FAS0078, & FAS0060), do not fully tighten at this time.



Step 3.0 "Location & Installation of the Upper E-Track Section and Brkts, continued"

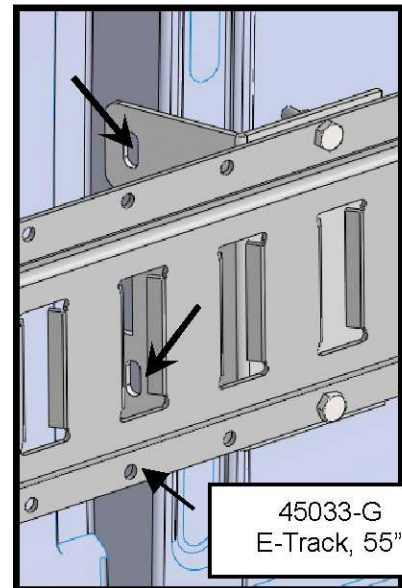
Step 3.8

Position the Center E-Track Support Bracket (45594-G) as shown in figure at right.

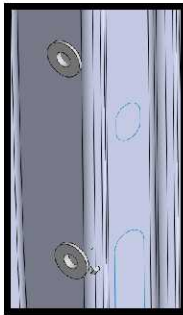
Note

Fasteners should be hand tight only

Mark the center bracket plusnut locations using a permanent marker pen. Once both holes have been marked remove fasteners at each end of the e-track section to the end support brackets and set aside at this time.



45033-G
E-Track, 55"



Step 3.9

Install two 1/4-20UNC plusnuts (FAS0052) in marked holes, use a 3/8" diameter drill bit with a stop collar when drilling plusnut holes. See front of this instruction proper installation.

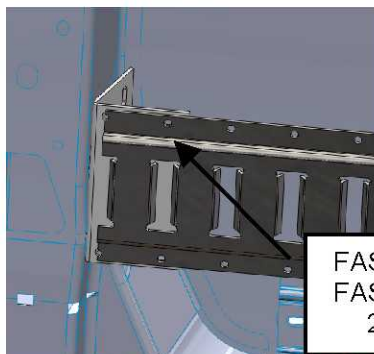
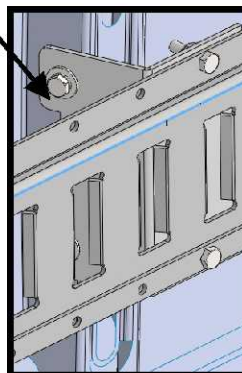
Step 3.10

Once both plusnuts have been installed, reposition the e-track section and secure both ends to the "B" and "C" pillars. Next secure the center support bracket in place with two each of the listed fasteners.

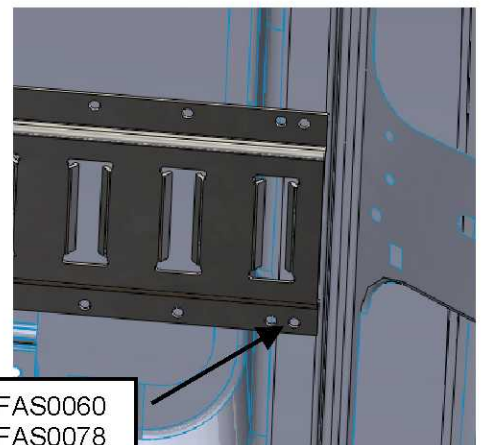
Note

Tighten all fasteners, proceed to next step.

FAS0067
FAS0060
FAS0078
2-pl

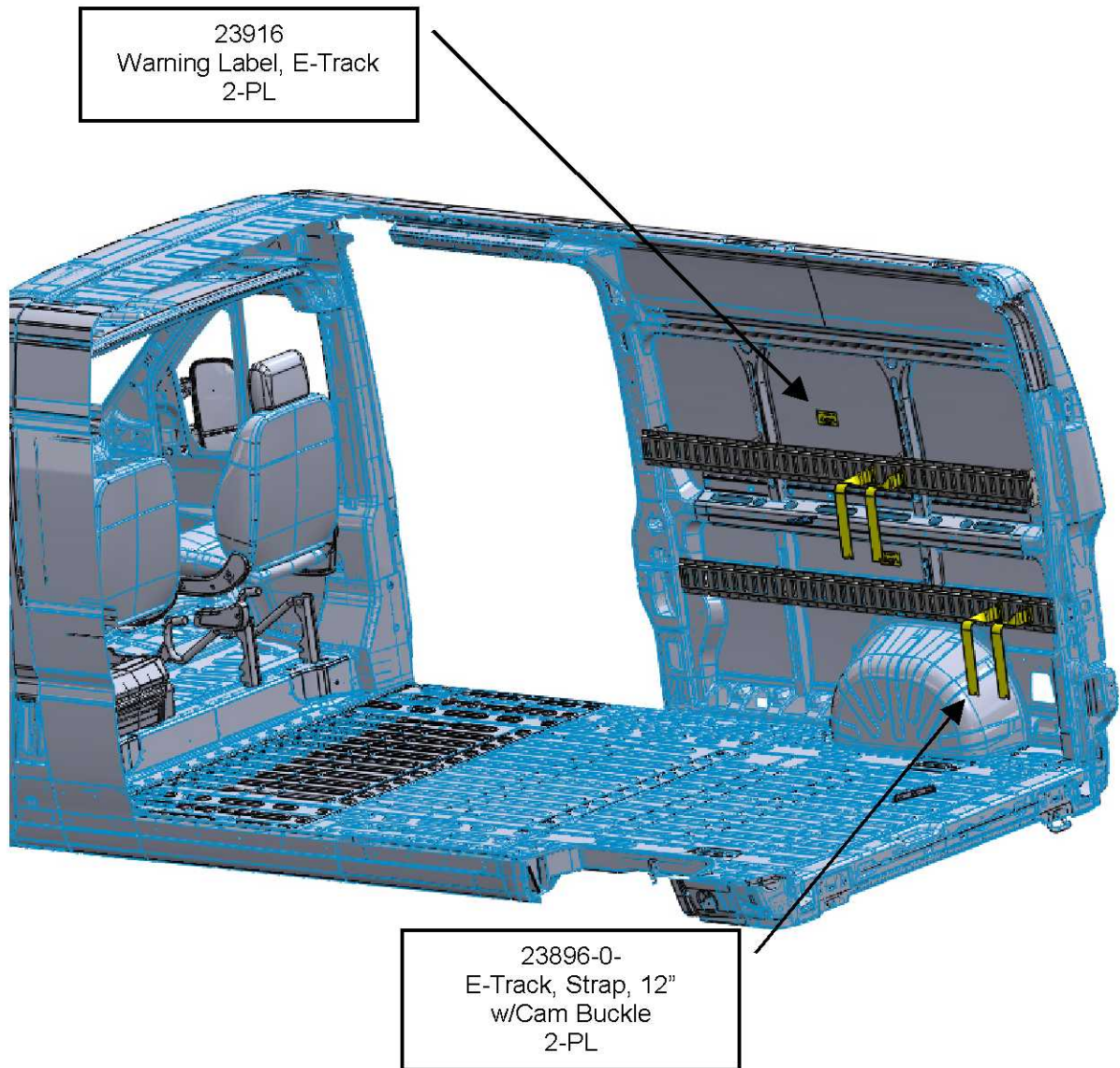


FAS0055
FAS0078
2-pl



FAS0060
FAS0078
2-pl

Step 04 "Apply warning labels and straps"



PURCHASED COMPONENT KEY FEATURES	
DESCRIPTION OF REQUIREMENTS	
DIMENSIONAL REQUIREMENTS (AS SHOWN ON DRAWING)	
N/A	
LOAD/RATING REQUIREMENT	
N/A	
MATERIAL REQUIREMENT	
N/A	
PACKAGING REQUIREMENT	
N/A	
OTHER REQUIREMENTS	
<ul style="list-style-type: none">2" x 12' STRONG POLYESTER WEBBING WITH 48" FIXED ENDDESIGNED TO SECURE CARGO UP TO 833 LBS.2" CAM BUCKLE WITH SPRING-ACTUATED E-FITTINGS ON BOTH ENDS	



THIS DRAWING IS THE PROPERTY OF ADRIAN STEEL COMPANY AND IS NOT TO BE USED IN ANY MANNER DETRIMENTAL TO THE INTERESTS OF ADRIAN STEEL COMPANY		PRINTED DOCUMENT IS UNCONTROLLED		Sheet 1 of 1
TOLERANCES & INSPECTION		PART / PRODUCT IDENTIFICATION		
UNLESS OTHERWISE SPECIFIED ALL BEND ANGLES ARE 90 DEGREES ALL DIMENSIONS ARE IN INCHES. REFERENCE DIMENSIONS (X.XXX) DO NOT REQUIRE INSPECTION		<div><div><div>AS</div><div>ADRIAN STEEL®</div></div><div>ADRIAN STEEL COMPANY 906 JAMES STREET, ADRIAN, MI 49221</div></div>		REVISION LEVEL <div>B</div>
FEATURES HOLES/SLOTS ANGLES 0.0 = ± .125 0.0 = ± .062 0° = ± 2° 0.00 = ± .062 0.00 = ± .031 0.0° = ± 1° 0.000 = ± .031 0.000 = ± .015		MAT'L USED: POLYESTER		DESIGNED BY: RG
Material Thickness: per ASTM Std. Weld Callouts per AWS		DESCRIPTION: E-TRAC,STRAP 12'W/CAM BKL		
TOLERANCES & INSPECTION		WEIGHT (Lbs.): 1.60 LBS	SEGMENT CODE: MAC	PART NUMBER: 23896-0
RELEASE & REVISIONS		PURCHASED COMPONENT		
INITIAL ECN: 4100		REFERENCED SUPPLIER AND/OR MANUFACTURER AUSTIN HARDWARE / OR EQUIVALENT		
CURRENT ECN: 25465		REFERENCED SUPPLIER AND/OR MANUFACTURER PART NUMBER CCCS-001		
ECN DESCRIPTION:		COLOR (ONLY LIST IF COLOR SPECIFIC) N/A		
CREATED PPDS SHEET FOR 23896-0		COMODITY ITEM (Y/N) (YES = ALL DIMENSIONS AND NOTES ARE REFERENCE) (NOTE: DIMENSIONS AND FEATURES MAY VARY FOR A COMODITY ITEM.) YES		
REVISED BY: WJA				